

TRACT 33718 - Pointe Coupee and West Feliciana Parishes, Louisiana

All of the lands now or formerly constituting the beds and bottoms of all water bodies of every nature and description and all islands and other lands formed by accretion or reliction, except tax lands, owned by and not under mineral lease from the State of Louisiana on August 8, 2001, situated in Pointe Coupee and West Feliciana Parishes, Louisiana, within the following described boundaries: Beginning at a point having Coordinates of X = 1,994,000 and Y = 750,000; thence run due West approximately 14,000 feet to a point having Coordinates of X = 1,980,000 and Y = 750,000; thence run due North for approximately 14,000 feet to a point having Coordinates of X = 1,980,000 and Y = 764,000; thence run due East for approximately 14,000 feet to a point having Coordinates of X = 1,994,000 and Y = 764,000; thence run due South for approximately 14,000 feet to the point of beginning, containing approximately 1,400.00 acres, as shown outlined in red on a plat on file in the Office of Mineral Resources, Department of Natural Resources, as provided by the applicant. All bearings, distances and coordinates are based on Louisiana Coordinate System of 1927 (South Zone).

NOTE: The above description of the tract nominated for lease has been provided exclusively by the party nominating the tract for lease. The Louisiana State Mineral Board makes no representation as to the accuracy of the description of the nominated tract or its suitability for lease. The Louisiana State Mineral Board has made no inspection of the nominated tract for the existence of conflicting leases, operating agreements, private claims or other existing or future obligations or conditions which may affect all or any portion of the nominated tract or its suitability for lease.

Maps depicting the nominated tract, containing the bearings, distances and coordinates of the nominated tract based on the Louisiana Coordinate System of 1927, North or South Zone, as applicable, are available for public inspection and review at the offices of the Louisiana State Mineral Board from 10:00 a.m. to 3:00 p.m. Monday - Friday.

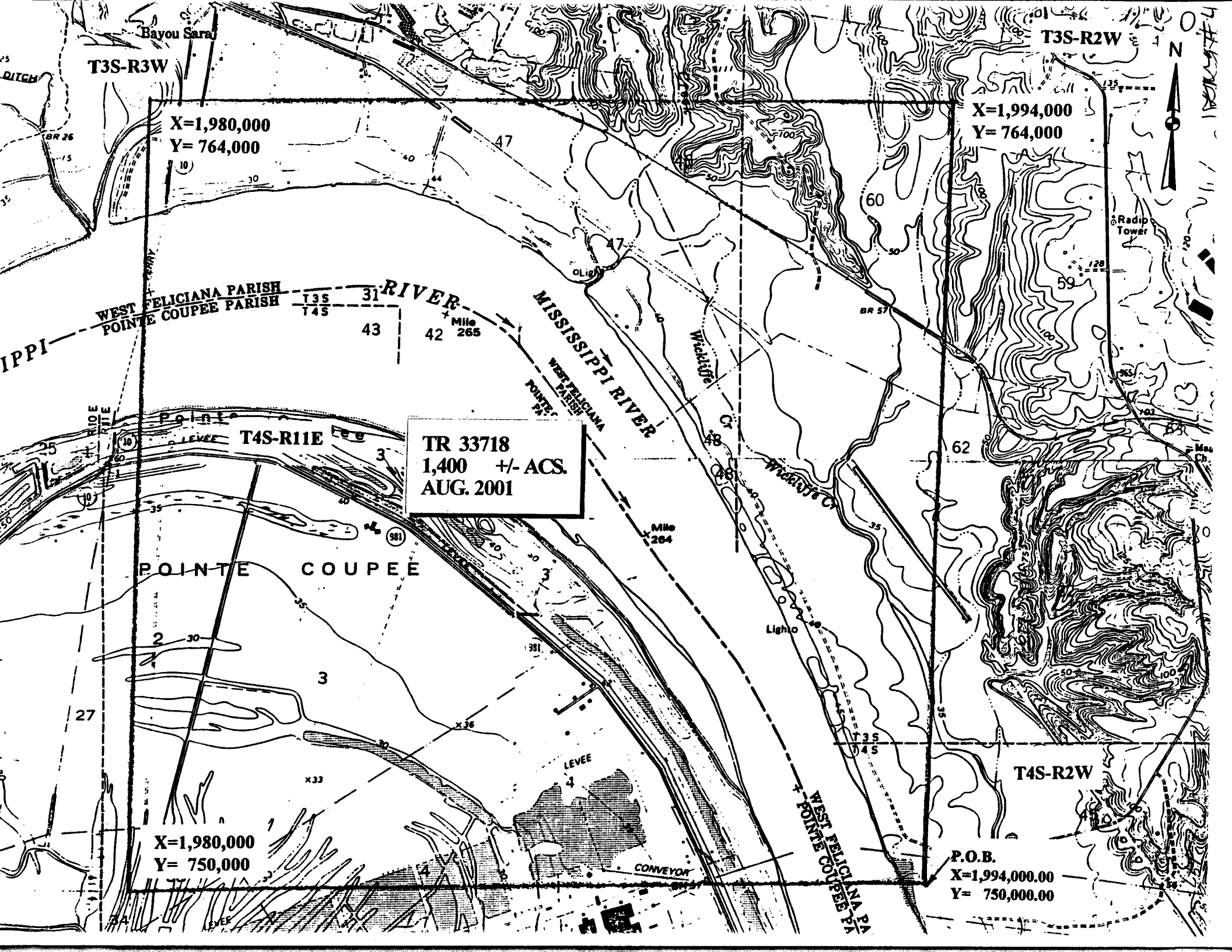
In the event of conflict between the description of the nominated tract set forth above and the description of the nominated property as contained on the maps maintained at the offices of the Louisiana State Mineral Board, the Louisiana State Mineral Board maps shall prevail and shall provide the final property description of the lease to be awarded of the nominated tract.

Any mineral lease of the nominated tract by the Louisiana State Mineral Board shall be without warranty of any kind, either express, implied, or statutory, including, but not limited to, the implied warranties or merchantability and fitness for a particular purpose. Should the mineral lease of the nominated tract awarded by the Louisiana State Mineral Board be subsequently modified, cancelled or abrogated due to the existence of conflicting leases, operating agreements, private claims or other existing of future obligations or conditions which may affect all or any portion of the leased tract, it shall not relieve the Lessee of the obligation to pay any bonus due thereon to the Louisiana State Mineral Board, nor shall the Louisiana State Mineral Board be obligated to refund any consideration paid by the Lessee prior to such modification, cancellation, or abrogation, including, but not limited to, bonuses,

rents and royalties.

Applicant: McGinty-Durham, Inc.

Bidder	Cash Payment	Price / Acre	Rental	Oil	Gas	Other



Bayou Sara

T3S-R3W

T3S-R2W

X=1,980,000
Y= 764,000

X=1,994,000
Y= 764,000

WEST FELICIANA PARISH
POINTE COUPEE PARISH

TR 33718
1,400 +/- ACS.
AUG. 2001

POINTE COUPEE

X=1,980,000
Y= 750,000

T4S-R2W

P.O.B.
X=1,994,000.00
Y= 750,000.00

WEST FELICIANA PA
POINTE COUPEE PA



Radio Tower

CONVEYOR

LEVEE

Light

Mile 264

Mile 265

MISSISSIPPI RIVER

31 RIVER

T4S-R11E

27

62

60

59

47

43

42

3

3

x33

x36

4

BR 26

BR 57

10

10

30

100

129

80

Max

St.

100

50

30

10

0

0

0

0

0

0

0

0

0

0

0

0

TRACT 33719 - St. Mary Parish, Louisiana

All of the lands now or formerly constituting the beds and bottoms of all water bodies of every nature and description and all islands and other lands formed by accretion or reliction, except tax lands, owned by and not under mineral lease from the State of Louisiana on August 8, 2001, situated in St. Mary Parish, Louisiana, within the following described boundaries: Beginning at a point having Coordinates of X = 1,979,800.00 and Y = 394,580.00; thence East 5,400.00 feet to a point having Coordinates of X = 1,985,200.00 and Y = 394,580.00; thence South 48 degrees 49 minutes 26 seconds East 5,513.57 feet to a point having Coordinates of X = 1,989,350.00 and Y = 390,950.00; thence South 14,770.00 feet to a point having Coordinates of X = 1,989,350.00 and Y = 376,180.00; thence West 9,550.00 feet to a point having Coordinates of X = 1,979,800.00 and Y = 376,180.00; thence North 18,400.00 feet to the point of beginning, containing approximately **97 acres**, as shown outlined in red on a plat on file in the Office of Mineral Resources, Department of Natural Resources, as provided by the applicant. All bearings, distances and coordinates are based on Louisiana Coordinate System of 1927 (South Zone).

NOTE: The above description of the tract nominated for lease has been provided exclusively by the party nominating the tract for lease. The Louisiana State Mineral Board makes no representation as to the accuracy of the description of the nominated tract or its suitability for lease. The Louisiana State Mineral Board has made no inspection of the nominated tract for the existence of conflicting leases, operating agreements, private claims or other existing or future obligations or conditions which may affect all or any portion of the nominated tract or its suitability for lease.

Maps depicting the nominated tract, containing the bearings, distances and coordinates of the nominated tract based on the Louisiana Coordinate System of 1927, North or South Zone, as applicable, are available for public inspection and review at the offices of the Louisiana State Mineral Board from 10:00 a.m. to 3:00 p.m. Monday - Friday.

In the event of conflict between the description of the nominated tract set forth above and the description of the nominated property as contained on the maps maintained at the offices of the Louisiana State Mineral Board, the Louisiana State Mineral Board maps shall prevail and shall provide the final property description of the lease to be awarded of the nominated tract.

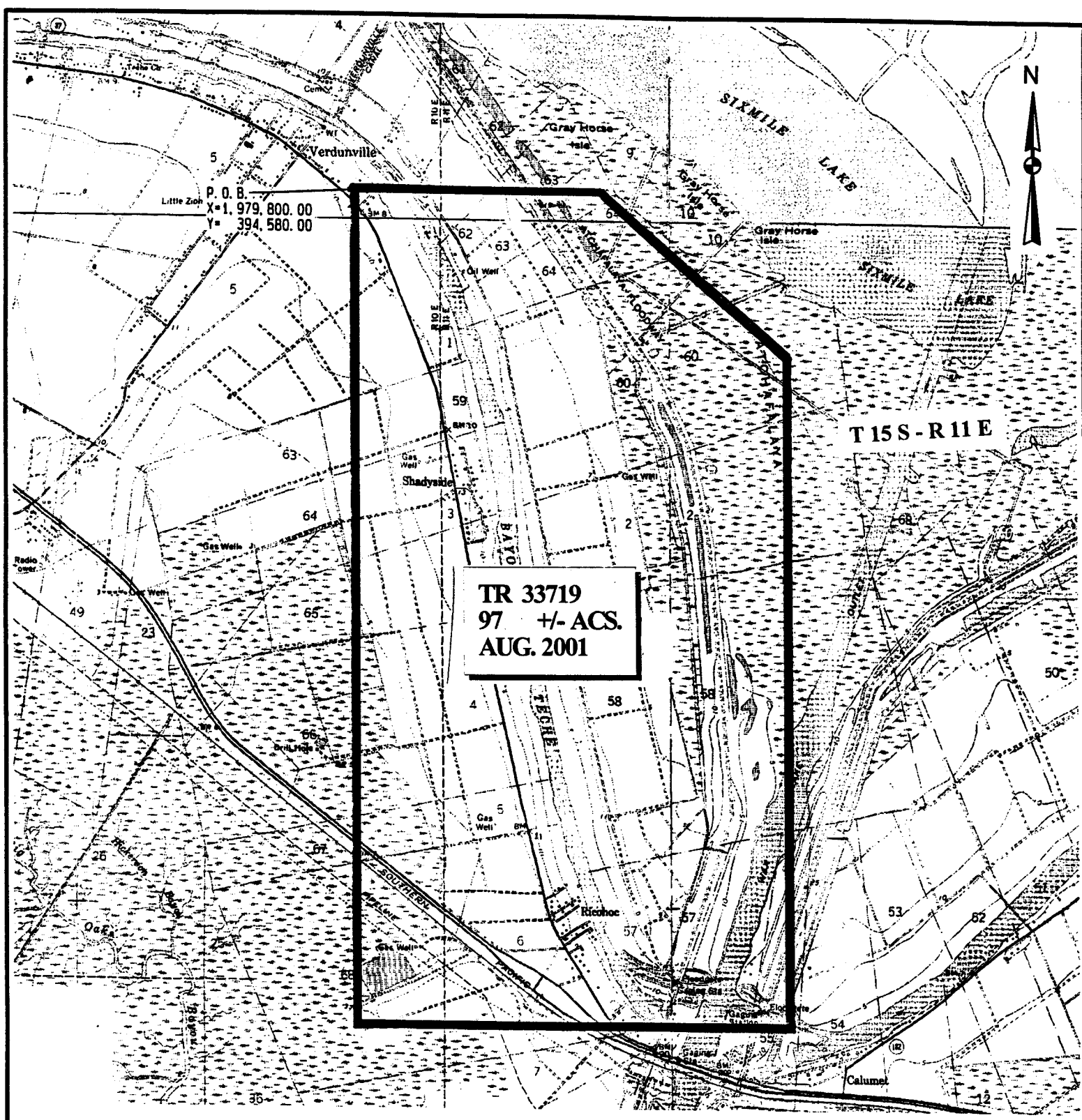
Any mineral lease of the nominated tract by the Louisiana State Mineral Board shall be without warranty of any kind, either express, implied, or statutory, including, but not limited to, the implied warranties or merchantability and fitness for a particular purpose. Should the mineral lease of the nominated tract awarded by the Louisiana State Mineral Board be subsequently modified, cancelled or abrogated due to the existence of conflicting leases, operating agreements, private claims or other existing of future obligations or conditions which may affect all or any portion of the leased tract, it shall not relieve the Lessee of the obligation to pay any bonus due thereon to the Louisiana State Mineral Board, nor shall the Louisiana State Mineral Board be obligated to refund any consideration paid by the Lessee prior to such modification, cancellation, or abrogation, including, but not limited to, bonuses,

rents and royalties.

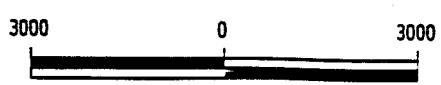
NOTE: The State of Louisiana does hereby reserve, and this lease shall be subject to, the imprescriptible right of surface use in the nature of a servitude in favor of the Department of Natural Resources, including its Offices and Commissions, for the sole purpose of implementing, constructing, servicing and maintaining approved coastal zone management and/or restoration projects. Utilization of any and all rights derived under this lease by the mineral lessee, its agents, successors or assigns, shall not interfere with nor hinder the reasonable surface use by the Department of Natural Resources, its Offices or Commissions, as hereinabove reserved.

Applicant: Harold J. Anderson, Inc.

Bidder	Cash Payment	Price / Acre	Rental	Oil	Gas	Other



St. Mary Parish, Louisiana



Scale in Feet

TRACT 33720 - Terrebonne Parish, Louisiana

All of the lands now or formerly constituting the beds and bottoms of all water bodies of every nature and description and all islands and other lands formed by accretion or reliction, except tax lands, owned by and not under mineral lease from the State of Louisiana on August 8, 2001, situated in Terrebonne Parish, Louisiana, within the following described boundaries: Beginning at a point having Coordinates of X = 2,049,655.00 and Y = 298,690.00; thence North 89 degrees 18 minutes 50 seconds East for a distance of 17,536.26 feet to a point having Coordinates of X = 2,067,190.00 and Y = 298,900.00; thence North 01 degrees 35 minutes 49 seconds West for a distance of 17,229.12 feet to a point having Coordinates of X = 2,066,709.89 and Y = 316,122.42, also being a point on the South line of State Lease No. 14927, as amended; thence Westerly along the South line of said State Lease No. 14927 to a point having Coordinates of X = 2,065,357.64 and Y = 316,111.01, being the Southwest corner of said State Lease No. 14927; thence South 89 degrees 30 minutes 59 seconds West for a distance of 16,229.36 feet to a point having Coordinates of X = 2,049,128.86 and Y = 315,974.06, being the Easternmost Northeast corner of State Lease No. 16362; thence Southerly along the Eastern boundary of said State Lease No. 16362 to a point having Coordinates of X = 2,049,251.52 and Y = 311,969.01, being the Southeast corner of said State Lease No. 16362, and also a point on the North line of State Lease No. 16967; thence Easterly along the North line of said State Lease No. 16967 to a point having Coordinates of X = 2,049,600.00 and Y = 311,969.01, also being the Easternmost Northeast corner of said State Lease No. 16967; thence Southerly along the Eastern boundary of said State Lease No. 16967 to a point having Coordinates of X = 2,049,600.00 and Y = 306,600.00, also being the Easternmost Southeast corner of said State Lease No. 16967; thence Westerly along the South line of said State Lease No. 16967 to a point having Coordinates of X = 2,049,427.26 and Y = 306,600.00; thence South 01 degrees 38 minutes 57 seconds East for a distance of 7,913.28 feet to the point of beginning, containing approximately 7.0 acres, as shown outlined in red on a plat on file in the Office of Mineral Resources, Department of Natural Resources, as provided by the applicant. All bearings, distances and coordinates are based on Louisiana Coordinate System of 1927 (South Zone).

NOTE: The above description of the tract nominated for lease has been provided exclusively by the party nominating the tract for lease. The Louisiana State Mineral Board makes no representation as to the accuracy of the description of the nominated tract or its suitability for lease. The Louisiana State Mineral Board has made no inspection of the nominated tract for the existence of conflicting leases, operating agreements, private claims or other existing or future obligations or conditions which may affect all or any portion of the nominated tract or its suitability for lease.

Maps depicting the nominated tract, containing the bearings, distances and coordinates of the nominated tract based on the Louisiana Coordinate System of 1927, North or South Zone, as applicable, are available for public inspection and review at the offices of the Louisiana State Mineral Board from 10:00 a.m. to 3:00 p.m. Monday - Friday.

In the event of conflict between the description of the nominated tract set forth above and the description of the nominated property as contained on the maps maintained at the offices of the Louisiana

State Mineral Board, the Louisiana State Mineral Board maps shall prevail and shall provide the final property description of the lease to be awarded of the nominated tract.

Any mineral lease of the nominated tract by the Louisiana State Mineral Board shall be without warranty of any kind, either express, implied, or statutory, including, but not limited to, the implied warranties or merchantability and fitness for a particular purpose. Should the mineral lease of the nominated tract awarded by the Louisiana State Mineral Board be subsequently modified, cancelled or abrogated due to the existence of conflicting leases, operating agreements, private claims or other existing or future obligations or conditions which may affect all or any portion of the leased tract, it shall not relieve the Lessee of the obligation to pay any bonus due thereon to the Louisiana State Mineral Board, nor shall the Louisiana State Mineral Board be obligated to refund any consideration paid by the Lessee prior to such modification, cancellation, or abrogation, including, but not limited to, bonuses, rents and royalties.

Applicant: Magnolia Oil & Gas Properties

Bidder	Cash Payment	Price / Acre	Rental	Oil	Gas	Other

T17S-R12E

T17S-R13E

T18S-R12E

T18S-R13E

SL 14927

SE 16362

SE 16967

TR 33720
7 +/- ACS.
AUG. 2001

P.O.B.

X=2,049,655.00

Y= 298,690.00



TRACT 33721 - Terrebonne Parish, Louisiana

All of the lands now or formerly constituting the beds and bottoms of all water bodies of every nature and description and all islands and other lands formed by accretion or reliction, except tax lands, owned by and not under mineral lease from the State of Louisiana on August 8, 2001, situated in Terrebonne Parish, Louisiana, within the following described boundaries: Beginning at a point having Coordinates of X = 2,045,991.63 and Y = 281,438.27; thence North 89 degrees 28 minutes 40 seconds East for a distance of 17,429.23 feet to a point having Coordinates of X = 2,063,420.14 and Y = 281,579.09; thence North 00 degrees 54 minutes 21 seconds West for a distance of 17,256.64 feet to a point having Coordinates of X = 2,063,147.32 and Y = 298,851.58; thence South 89 degrees 18 minutes 50 seconds West for a distance of 13,493.29 feet to a point having Coordinates of X = 2,049,655.00 and Y = 298,690.00; thence South 01 degrees 46 minutes 10 seconds East for a distance of 9,259.45 feet to a point having Coordinates of X = 2,049,940.89 and Y = 289,434.96; thence South 89 degrees 43 minutes 00 seconds West for a distance of 1,342.48 feet to a point having Coordinates of X = 2,048,598.43 and Y = 289,428.33; thence South 01 degrees 49 minutes 35 seconds East for a distance of 3,966.70 feet to a point having Coordinates of X = 2,048,724.85 and Y = 285,463.64; thence South 89 degrees 21 minutes 32 seconds West for a distance of 2,756.89 feet to a point having Coordinates of X = 2,045,968.13 and Y = 285,432.80; thence South 00 degrees 20 minutes 14 seconds East for a distance of 3,994.59 feet to the point of beginning, containing approximately **170.5 acres**, as shown outlined in red on a plat on file in the Office of Mineral Resources, Department of Natural Resources, as provided by the applicant. All bearings, distances and coordinates are based on Louisiana Coordinate System of 1927 (South Zone).

NOTE: The above description of the tract nominated for lease has been provided exclusively by the party nominating the tract for lease. The Louisiana State Mineral Board makes no representation as to the accuracy of the description of the nominated tract or its suitability for lease. The Louisiana State Mineral Board has made no inspection of the nominated tract for the existence of conflicting leases, operating agreements, private claims or other existing or future obligations or conditions which may affect all or any portion of the nominated tract or its suitability for lease.

Maps depicting the nominated tract, containing the bearings, distances and coordinates of the nominated tract based on the Louisiana Coordinate System of 1927, North or South Zone, as applicable, are available for public inspection and review at the offices of the Louisiana State Mineral Board from 10:00 a.m. to 3:00 p.m. Monday - Friday.

In the event of conflict between the description of the nominated tract set forth above and the description of the nominated property as contained on the maps maintained at the offices of the Louisiana State Mineral Board, the Louisiana State Mineral Board maps shall prevail and shall provide the final property description of the lease to be awarded of the nominated tract.

Any mineral lease of the nominated tract by the Louisiana State Mineral Board shall be without warranty of any kind, either express, implied, or statutory, including, but not limited to, the implied warranties or merchantability and fitness for a particular purpose.

Should the mineral lease of the nominated tract awarded by the Louisiana State Mineral Board be subsequently modified, cancelled or abrogated due to the existence of conflicting leases, operating agreements, private claims or other existing of future obligations or conditions which may affect all or any portion of the leased tract, it shall not relieve the Lessee of the obligation to pay any bonus due thereon to the Louisiana State Mineral Board, nor shall the Louisiana State Mineral Board be obligated to refund any consideration paid by the Lessee prior to such modification, cancellation, or abrogation, including, but not limited to, bonuses, rents and royalties.

Applicant: Magnolia Oil & Gas Properties

Bidder	Cash Payment	Price / Acre	Rental	Oil	Gas	Other