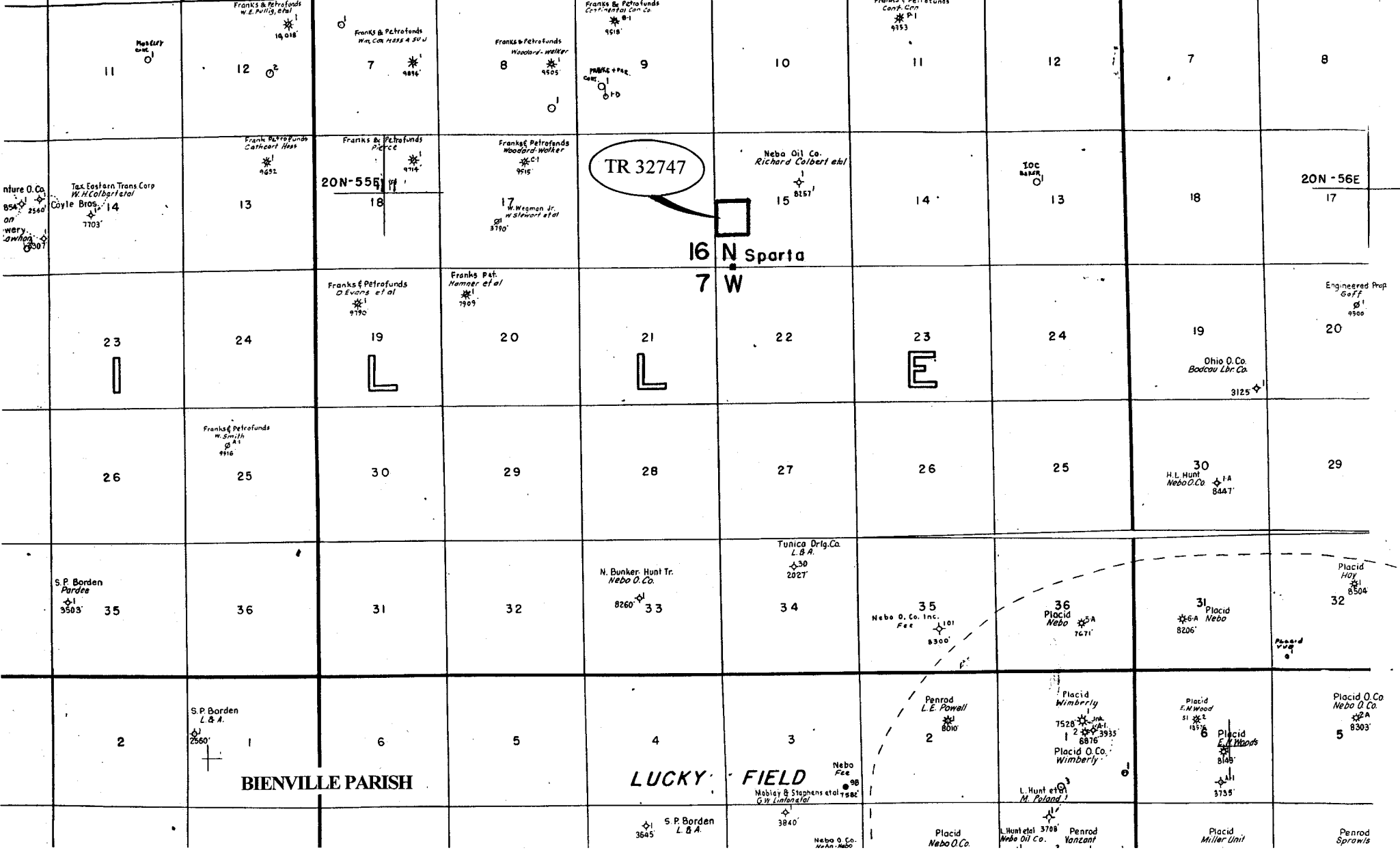


**STATE  
AGENCY  
TRACTS**



MAP NOT TO SCALE

NOT TO BE USED WITH A PORTION BID  
FOR INFORMATIONAL PURPOSES ONLY!

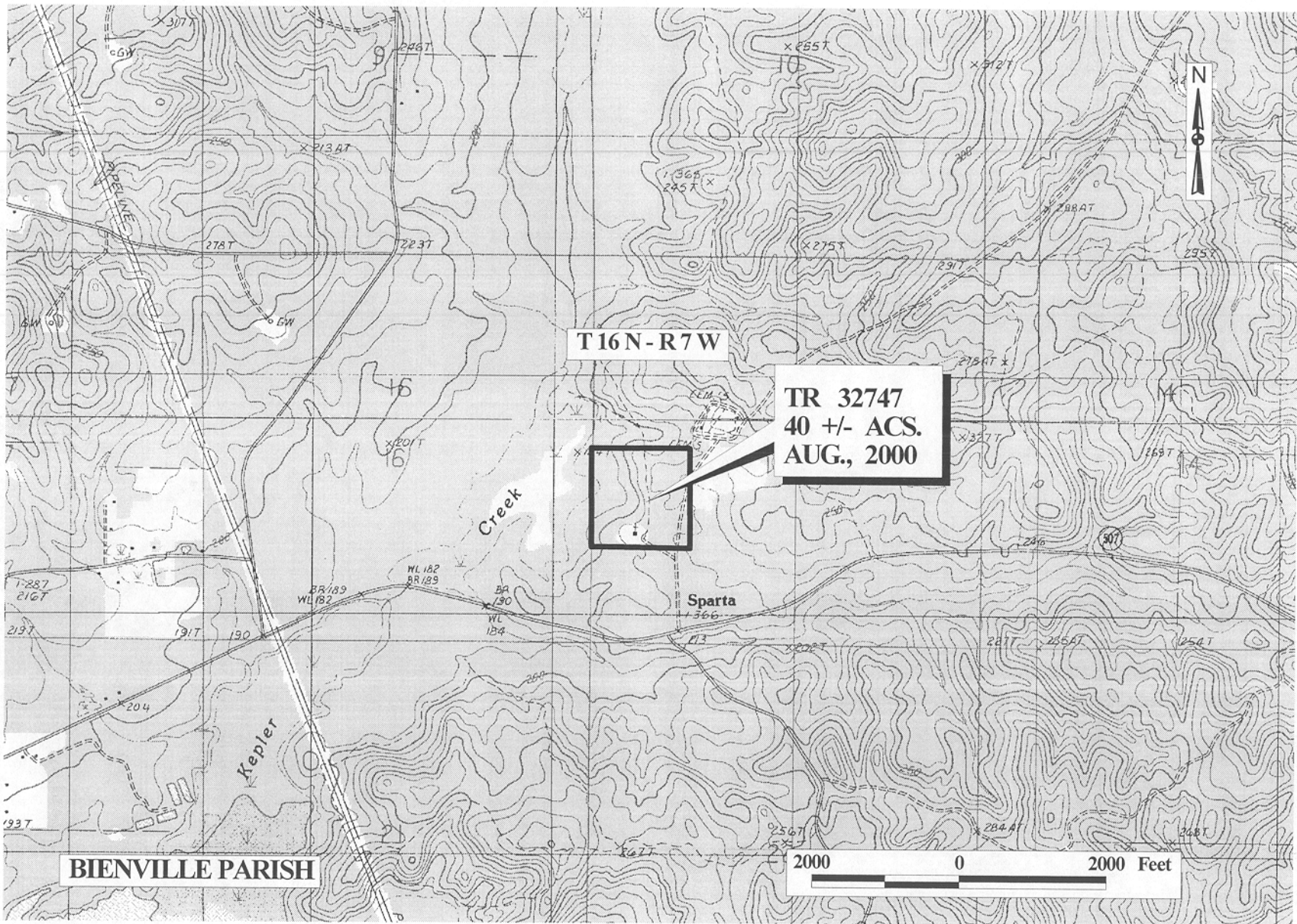
F & A Map Services  
Division of PI

**TRACT 32747 - STATE AGENCY - Bienville Parish, Louisiana**

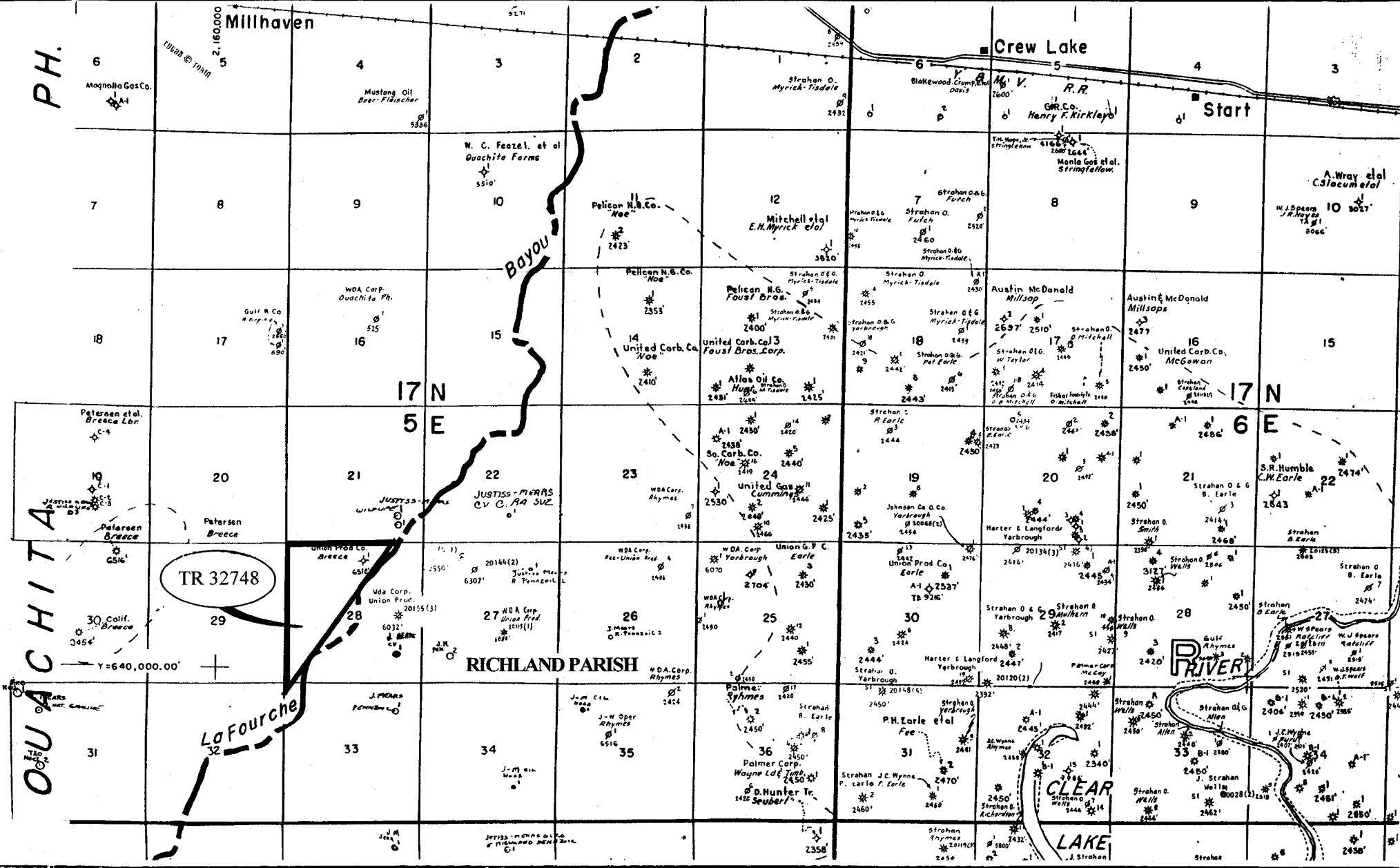
A certain tract of land belonging to and not under mineral lease from the Bienville Parish Police Jury, on August 9, 2000, being more fully described as follows: The Northwest Quarter of the southwest Quarter of Section 15, Township 16 North, Range 7 West, Bienville Parish, Louisiana, excluding beds and bottoms of all navigable waters, containing approximately 40 acres, as shown outlined in red on a plat on file in the Office of Mineral Resources, Department of Natural Resources.

Applicant: Petro-Land Resources, Inc. to Agency and by Resolution from the Bienville Parish Police Jury authorizing the Mineral Board to act in its behalf.

Bidder	Cash Payment	Price / Acre	Rental	Oil	Gas	Other



OFFICIAL COPY  
OFFICE OF MINERAL RESOURCES  
DEPT. OF NATURAL RESOURCES  
DO NOT REMOVE



PH.  
 OUCHITA  
 2,160,000  
 1911

TR 32748

**RICHLAND PARISH**

MAP NOT TO SCALE

NOT TO BE USED WITH A PORTION BID  
 FOR INFORMATIONAL PURPOSES ONLY!

F & A Map Services  
 Division of PI

174

**TRACT 32748 - STATE AGENCY - Ouachita and Richland Parishes, Louisiana**

A certain tract of land belonging to and not under mineral lease from the Louisiana Department of Wildlife and Fisheries, on August 9, 2000, being more fully described as follows: All of Section 28, lying West of Bayou Lafourche, situated in Township 17 North, Range 5 East, Ouachita and Richland Parishes, Louisiana, excluding beds and bottoms of all navigable waters, containing approximately 238 acres, as shown outlined in red on a plat on file in the Office of Mineral Resources, Department of Natural Resources.

NOTE: No activities will be allowed without written authorization of the Louisiana Department of Wildlife and Fisheries. All projects will be coordinated and approved by the Russell Sage Wildlife Management Area Supervisor prior to any activities on the wildlife management area.

NOTE: Proposed projects will be evaluated on a case by case basis. Modifications to proposed project failures including but not limited to access routes, well sites, flowlines and appurtenant structures may be required by the Louisiana Department of Wildlife and Fisheries.

NOTE: Compliance with the Russell Sage Management Area and mineral regulations will be required unless otherwise specified by the Department.

NOTE: Compensatory mitigation will be required to offset unavoidable habitat impacts.

NOTE: Removal of all structures, facilities and equipment will be required within 120 days of abandonment unless otherwise agreed to by the Department.

NOTE: No activities will be allowed during the hunting season unless approved by the Department.

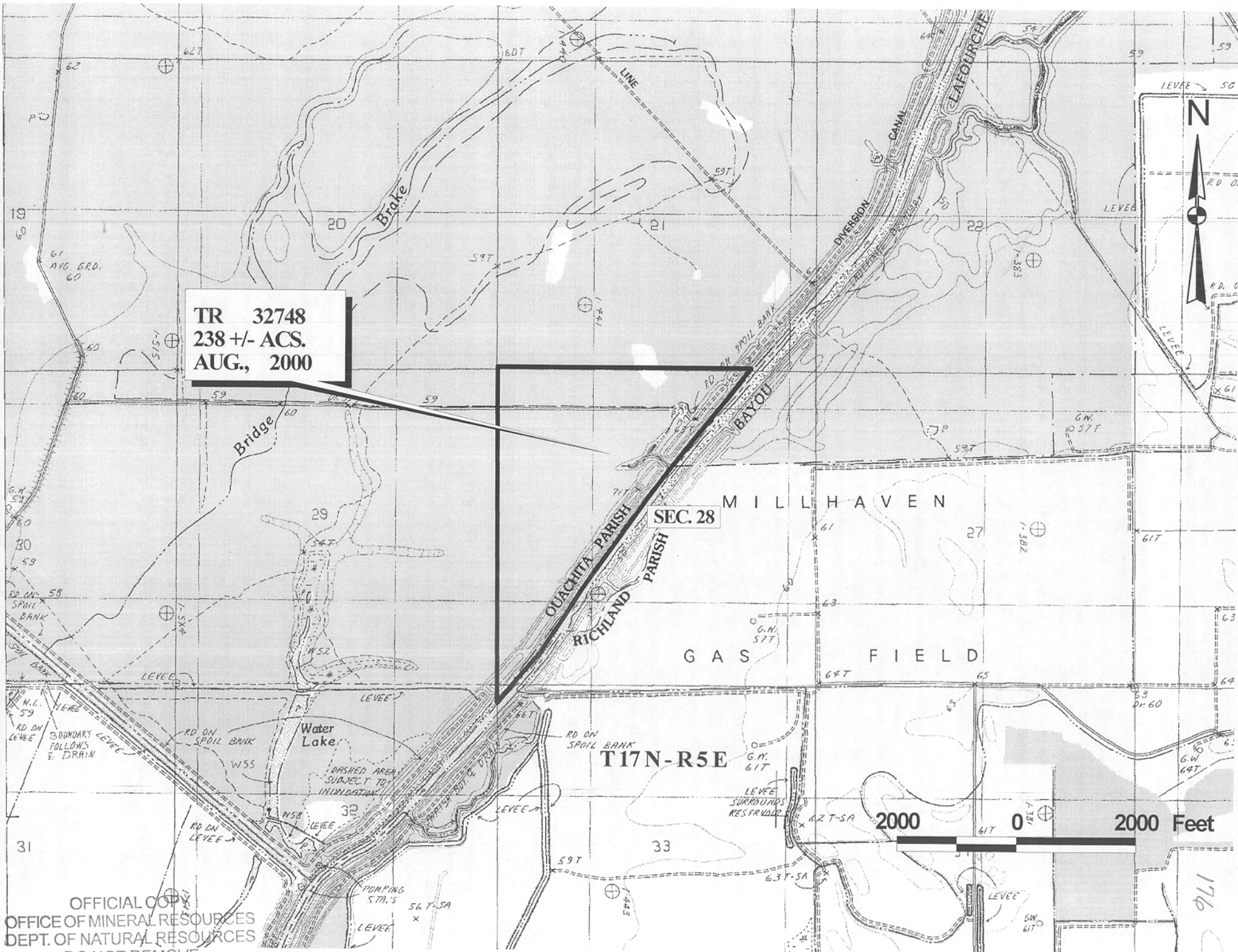
NOTE: Prior to submitting applications for wetland permits to Federal and State permitting agencies, the lease holder shall coordinate project details with the Department.

NOTE: Additionally, the Department will require a minimum bonus of \$150.00 per acre and a minimum royalty of 25 percent.

Applicant: George S. Pate to Agency and Letter of Authorization from the Louisiana Department of Wildlife and Fisheries authorizing the Mineral Board to act in its behalf.

Bidder	Cash Payment	Price / Acre	Rental	Oil	Gas	Other

**TR 32748**  
**238 +/- ACS.**  
**AUG., 2000**



OFFICIAL COPY  
OFFICE OF MINERAL RESOURCES  
DEPT. OF NATURAL RESOURCES  
DO NOT REMOVE

176