



BLK. 15

TR 32703
2,453.57 +/- ACS.
AUG., 2000

BLK. 16

P.O.B.
X= 2,088,400.00
Y= 179,947.75

BLK. 17

LA
USA

BLK. 26

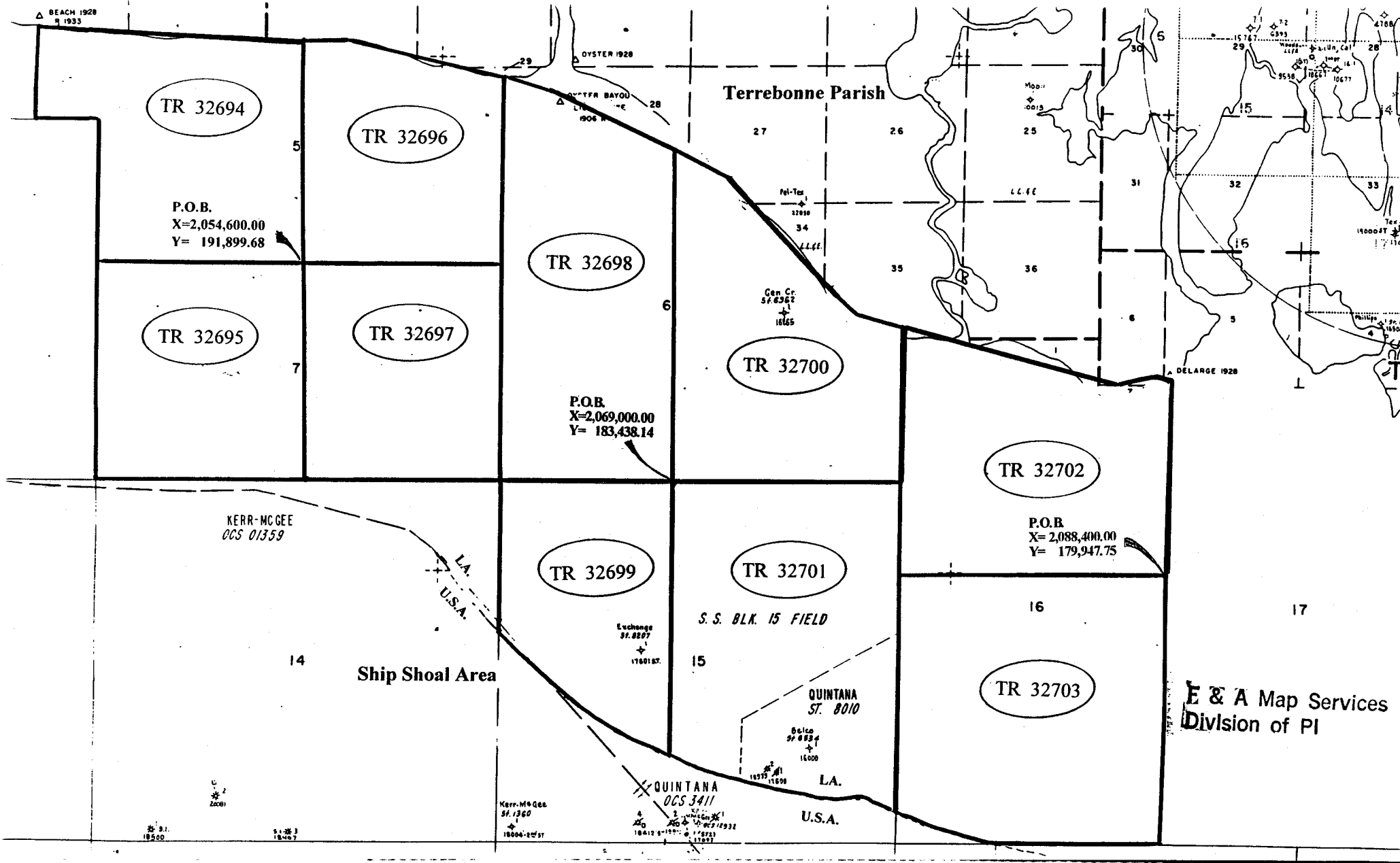
SHIP SHOAL AREA
TERREBONNE PARISH

OFFICIAL COPY
OFFICE OF MINERAL RESOURCES
DEPT. OF NATURAL RESOURCES
DO NOT REMOVE

2000 0 2000 Feet



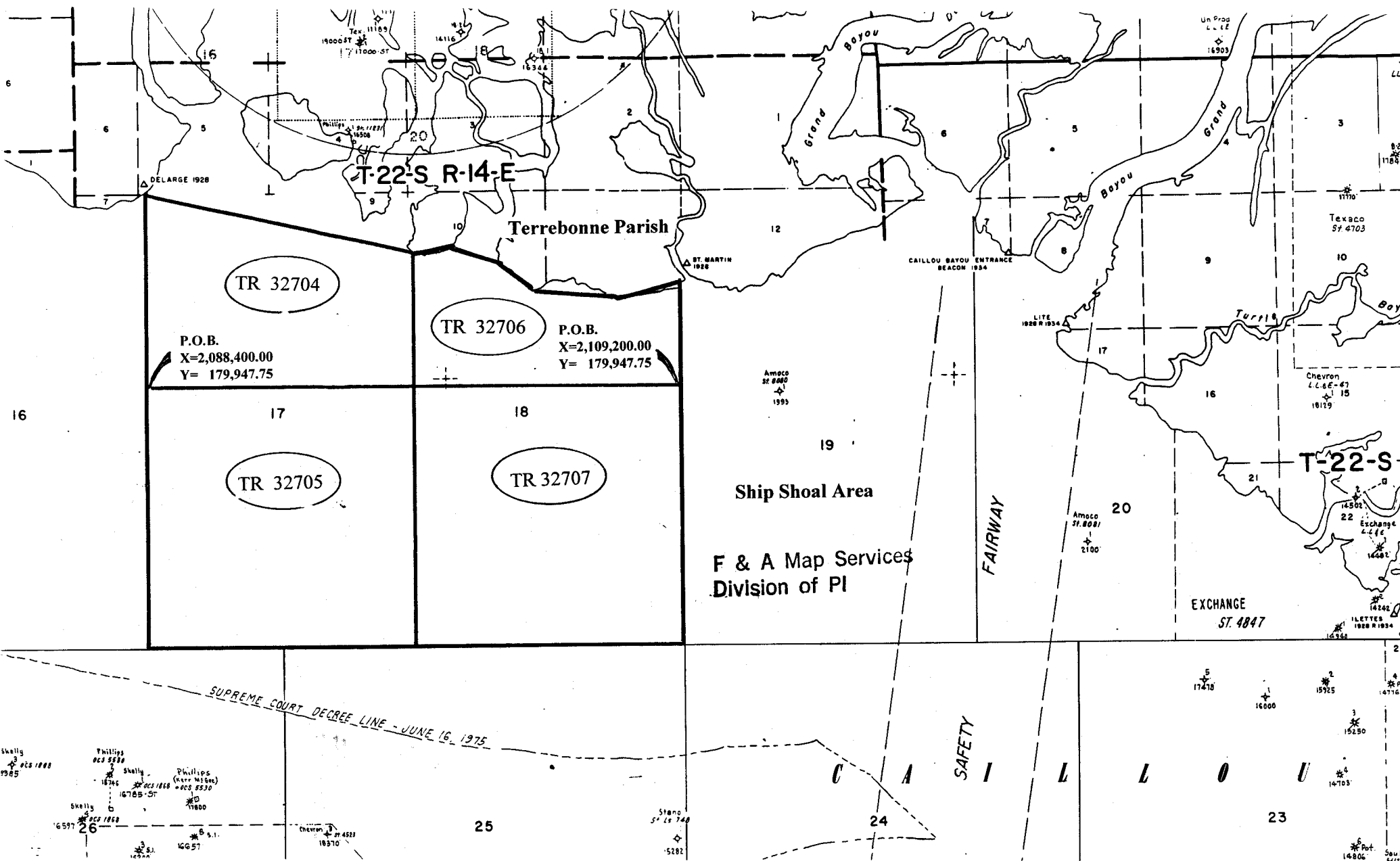
50



NOT TO BE USED WITH A PORTION BID
FOR INFORMATIONAL PURPOSES ONLY!

MAP NOT TO SCALE

51



TR 32704

P.O.B.
X=2,088,400.00
Y= 179,947.75

TR 32706 P.O.B.
X=2,109,200.00
Y= 179,947.75

TR 32705

TR 32707

Ship Shoal Area
F & A Map Services
Division of PI

FAIRWAY

SAFETY

C A L L O U

NOT TO BE USED WITH A PORTION BID
FOR INFORMATIONAL PURPOSES ONLY !

MAP NOT TO SCALE

TRACT 32704 - PORTION OF BLOCK 17, SHIP SHOAL AREA, Terrebonne Parish, Louisiana

That portion of Block 17, Ship Shoal Area, Terrebonne Parish, Louisiana, belonging to the State of Louisiana and not under mineral lease on August 9, 2000, described as follows: Beginning at a point on the West line of Block 17, Ship Shoal Area, having Coordinates of X = 2,088,400.00 and Y = 179,947.75; thence North 7,413.91 feet on the West line of said Block 17 to its Northwest corner having Coordinates of X = 2,088,400.00 and Y = 187,361.66; thence Southeasterly on a straight line to the Northeast corner of said Block 17 having Coordinates of X = 2,098,800.00 and Y = 185,137.93; thence South 5,190.18 feet on the East line of said Block 17 to a point having Coordinates of X = 2,098,800.00 and Y = 179,947.75; thence West 10,400.00 feet to the point of beginning, containing approximately 1,504.62 acres, as shown outlined in red on a plat on file in the Office of Mineral Resources, Department of Natural Resources. All bearings, distances and coordinates are based on Louisiana Coordinate System of 1927 (South Zone).

NOTE: The State of Louisiana does hereby reserve, and this lease shall be subject to, the imprescriptible right of surface use in the nature of a servitude in favor of the Department of Natural Resources, including its Offices and Commissions, for the sole purpose of implementing, constructing, servicing and maintaining approved coastal zone management and/or restoration projects. Utilization of any and all rights derived under this lease by the mineral lessee, its agents, successors or assigns, shall not interfere with nor hinder the reasonable surface use by the Department of Natural Resources, its Offices or Commissions, as hereinabove reserved.

Applicant: Woodland Petroleum Corporation

Bidder	Cash Payment	Price / Acre	Rental	Oil	Gas	Other



TR 32704
1,504.62 +/- ACS.
AUG., 2000

BLK. 17

P.O.B.
X= 2,088,400.00
Y= 179,947.75

BLK. 16

BLK. 18

SHIP SHOAL AREA
TERREBONNE PARISH

OFFICIAL COPY
OFFICE OF MINERAL RESOURCES
DEPT. OF NATURAL RESOURCES
DO NOT REMOVE

2000 0 2000 Feet

521

TRACT 32705 - PORTION OF BLOCK 17, SHIP SHOAL AREA, Terrebonne Parish, Louisiana

That portion of Block 17, Ship Shoal Area, Terrebonne Parish, Louisiana, belonging to the State of Louisiana and not under mineral lease on August 9, 2000, described as follows: Beginning at a point on the West line of Block 17, Ship Shoal Area, having Coordinates of X = 2,088,400.00 and Y = 179,947.75; thence East 10,400.00 feet to a point on the East line of said Block 17 having Coordinates of X = 2,098,800.00 and Y = 179,947.75; thence South 10,471.15 feet on the East line of said Block 17 to its Southeast corner having Coordinates of X = 2,098,800.00 and Y = 169,476.60; thence West 10,400.00 feet on the South line of said Block 17 to its Southwest corner having Coordinates of X = 2,088,400.00 and Y = 169,476.60; thence North 10,471.15 feet on the West line of said Block 17 to the point of beginning, containing approximately 2,500.00 acres, as shown outlined in red on a plat on file in the Office of Mineral Resources, Department of Natural Resources. All bearings, distances and coordinates are based on Louisiana Coordinate System of 1927 (South Zone).

NOTE: The State of Louisiana does hereby reserve, and this lease shall be subject to, the imprescriptible right of surface use in the nature of a servitude in favor of the Department of Natural Resources, including its Offices and Commissions, for the sole purpose of implementing, constructing, servicing and maintaining approved coastal zone management and/or restoration projects. Utilization of any and all rights derived under this lease by the mineral lessee, its agents, successors or assigns, shall not interfere with nor hinder the reasonable surface use by the Department of Natural Resources, its Offices or Commissions, as hereinabove reserved.

Applicant: Woodland Petroleum Corporation

Bidder	Cash Payment	Price / Acre	Rental	Oil	Gas	Other

SHIP SHOAL AREA
TERREBONNE PARISH



P.O.B.
X= 2,088,400.00
Y= 179,947.75

BLK. 16

BLK. 17

BLK. 18

TR 32705
2,500.00 +/- ACS.
AUG., 2000

BLK. 26

LA
USA

BLK. 25



OFFICIAL COPY
OFFICE OF MINERAL RESOURCES
DEPT. OF NATURAL RESOURCES
DO NOT REMOVE

56

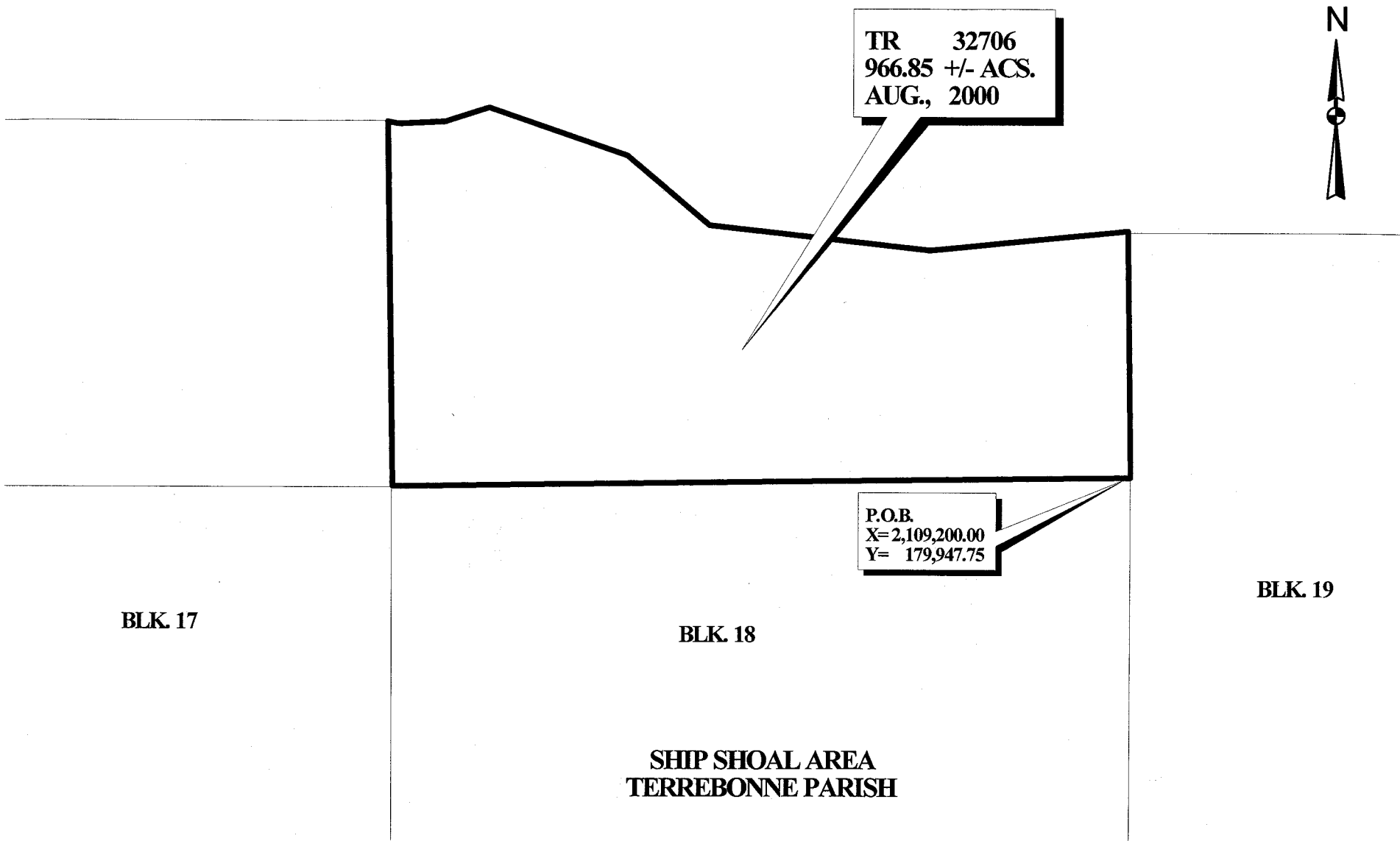
TRACT 32706 - PORTION OF BLOCK 18, SHIP SHOAL AREA, Terrebonne Parish, Louisiana

That portion of Block 18, Ship Shoal Area, Terrebonne Parish, Louisiana, belonging to the State of Louisiana and not under mineral lease on August 9, 2000, described as follows: Beginning at a point on the East line of Block 18, Ship Shoal Area, having Coordinates of X = 2,109,200.00 and Y = 179,947.75; thence West 10,400.00 feet to a point on the West line of said Block 18 having Coordinates of X = 2,098,800.00 and Y = 179,947.75; thence North 5,190.18 feet on the West line of said Block 18 to its Northwest corner having Coordinates of X = 2,098,800.00 and Y = 185,137.93; thence Southeasterly on a straight line to a point having Coordinates of X = 2,098,954 and Y = 185,105; thence Northeasterly on a straight line to a point having Coordinates of X = 2,099,609 and Y = 185,125; thence Northeasterly on a straight line to a point having Coordinates of X = 2,100,222 and Y = 185,315; thence Southeasterly on a straight line to a point having Coordinates of X = 2,102,167 and Y = 184,610; thence Southeasterly on a straight line to a point having Coordinates of X = 2,103,313 and Y = 183,605; thence Southeasterly on a straight line to a point having Coordinates of X = 2,106,412 and Y = 183,216; thence Northeasterly on a straight line to the Northeast corner of said Block 18 having Coordinates of X = 2,109,200.00 and Y = 183,459.19; thence South 3,511.44 feet to the point of beginning, containing approximately 966.85 acres, as shown outlined in red on a plat on file in the Office of Mineral Resources, Department of Natural Resources. All bearings, distances and coordinates are based on Louisiana Coordinate System of 1927 (South Zone).

NOTE: The State of Louisiana does hereby reserve, and this lease shall be subject to, the imprescriptible right of surface use in the nature of a servitude in favor of the Department of Natural Resources, including its Offices and Commissions, for the sole purpose of implementing, constructing, servicing and maintaining approved coastal zone management and/or restoration projects. Utilization of any and all rights derived under this lease by the mineral lessee, its agents, successors or assigns, shall not interfere with nor hinder the reasonable surface use by the Department of Natural Resources, its Offices or Commissions, as hereinabove reserved.

Applicant: Woodland Petroleum Corporation

Bidder	Cash Payment	Price / Acre	Rental	Oil	Gas	Other



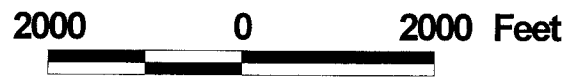
BLK. 17

BLK. 18

BLK. 19

**SHIP SHOAL AREA
TERREBONNE PARISH**

OFFICIAL COPY
OFFICE OF MINERAL RESOURCES
DEPT. OF NATURAL RESOURCES
DO NOT REMOVE



TRACT 32707 - PORTION OF BLOCK 18, SHIP SHOAL AREA, Terrebonne Parish, Louisiana

That portion of Block 18, Ship Shoal Area, Terrebonne Parish, Louisiana, belonging to the State of Louisiana and not under mineral lease on August 9, 2000, described as follows: Beginning at a point on the East line of Block 18, Ship Shoal Area, having Coordinates of X = 2,109,200.00 and Y = 179,947.75; thence South 10,471.15 feet on the East line of said Block 18 to its Southeast corner having Coordinates of X = 2,109,200.00 and Y = 169,476.60; thence West 10,400.00 feet on the South line of said Block 18 to its Southwest corner having Coordinates of X = 2,098,800.00 and Y = 169,476.60; thence North 10,471.15 feet on the West line of said Block 18 to a point having Coordinates of X = 2,098,800.00 and Y = 179,947.75; thence East 10,400.00 feet to the point of beginning, containing approximately 2,500.00 acres, as shown outlined in red on a plat on file in the Office of Mineral Resources, Department of Natural Resources. All bearings, distances and coordinates are based on Louisiana Coordinate System of 1927 (South Zone).

NOTE: The State of Louisiana does hereby reserve, and this lease shall be subject to, the imprescriptible right of surface use in the nature of a servitude in favor of the Department of Natural Resources, including its Offices and Commissions, for the sole purpose of implementing, constructing, servicing and maintaining approved coastal zone management and/or restoration projects. Utilization of any and all rights derived under this lease by the mineral lessee, its agents, successors or assigns, shall not interfere with nor hinder the reasonable surface use by the Department of Natural Resources, its Offices or Commissions, as hereinabove reserved.

Applicant: Woodland Petroleum Corporation

Bidder	Cash Payment	Price / Acre	Rental	Oil	Gas	Other



P.O.B.
X= 2,109,200.00
Y= 179,947.75

BLK. 17

BLK. 18

BLK. 19

TR 32707
2,500.00 +/- ACS.
AUG., 2000

BLK. 24

BLK. 24

OFFICIAL COPY
OFFICE OF MINERAL RESOURCES
DEPT. OF NATURAL RESOURCES
DO NOT REMOVE

SHIP SHOAL AREA
TERREBONNE PARISH



60