

TR 32692
 2,500.00 +/- ACS.
 AUG., 2000

O F M E X I C O

BLOCK 8

BLOCK 7

P.O.B.
 X=1,332,419.52
 Y= 393,790.24

BLOCK 23

BLOCK 24

WEST CAMERON AREA, REVISED
 CAMERON PARISH



OFFICIAL COPY
 OFFICE OF MINERAL RESOURCES
 DEPT. OF NATURAL RESOURCES
 DO NOT REMOVE

TRACT 32693 - PORTION OF BLOCK 24, WEST CAMERON AREA, REVISED, Cameron Parish, Louisiana

That portion of Block 24, West Cameron Area, Revised, Cameron Parish, Louisiana, belonging to the State of Louisiana and not under mineral lease on August 9, 2000, described as follows: Beginning at the Northwest corner of Block 24, West Cameron Area, Revised, having Coordinates of X = 1,332,419.52 and Y = 393,790.24; thence East 14,758.05 feet on the North line of said Block 24 to its Northeast corner having Coordinates of X = 1,347,177.57 and Y = 393,790.24; thence South 7,023.29 feet on the East line of said Block 24 to a point having Coordinates of X = 1,347,177.57 and Y = 386,766.95; thence Northwesterly in a straight line to a point having Coordinates of X = 1,339,580 and Y = 387,874; thence Northwesterly on a straight line to a point on the West line of said Block 24 having Coordinates of X = 1,332,419.52 and Y = 388,681.65; thence North 5,108.59 feet on the West line of said Block 24 to the point of beginning, containing approximately 2,034.57 acres, as shown outlined in red on a plat on file in the Office of Mineral Resources, Department of Natural Resources, **LESS AND EXCEPT** that portion thereof, if any, which is more than three nautical miles from the coast line as determined by the Report of the Special Master in the litigation in the Supreme Court of the United States styled United States v. State of Louisiana et al No. 9 Original, said three mile line as set out in the June, 1975, decree of the Supreme Court. All bearings, distances and coordinates are based on Louisiana Coordinate System of 1927 (South Zone).

NOTE: The State of Louisiana does hereby reserve, and this lease shall be subject to, the imprescriptible right of surface use in the nature of a servitude in favor of the Department of Natural Resources, including its Offices and Commissions, for the sole purpose of implementing, constructing, servicing and maintaining approved coastal zone management and/or restoration projects. Utilization of any and all rights derived under this lease by the mineral lessee, its agents, successors or assigns, shall not interfere with nor hinder the reasonable surface use by the Department of Natural Resources, its Offices or Commissions, as hereinabove reserved.

Applicant: Lloyd Energy Corporation

Bidder	Cash Payment	Price / Acre	Rental	Oil	Gas	Other



P.O.B.
X=1,332,419.52
Y= 393,790.24

BLOCK 8

BLOCK 7

BLOCK 6

BLOCK 23

BLOCK 24

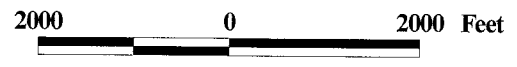
BLOCK 25

TR 32693
2,034.57 +/- ACS.
AUG., 2000

LA.
U.S.A.

WEST CAMERON AREA, REVISED
CAMERON PARISH

OFFICIAL COPY
OFFICE OF MINERAL RESOURCES
DEPT. OF NATURAL RESOURCES
DO NOT REMOVE



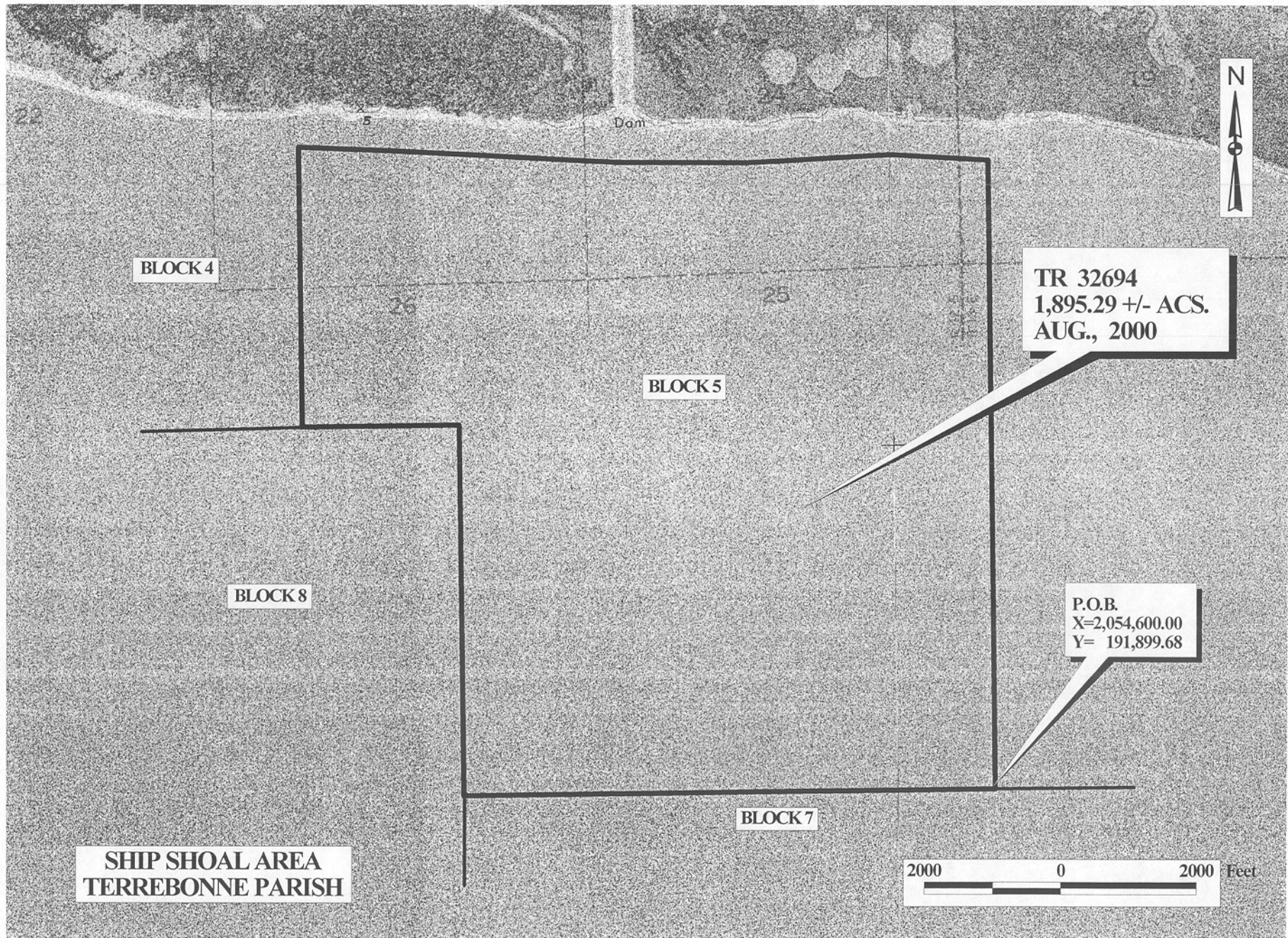
TRACT 32694 - PORTION OF BLOCK 5, SHIP SHOAL AREA, Terrebonne Parish, Louisiana

That portion of Block 5, Ship Shoal Area, Terrebonne Parish, Louisiana, belonging to the State of Louisiana and not under mineral lease on August 9, 2000, described as follows: Beginning at a point on the South line of Block 5, Ship Shoal Area, having Coordinates of X = 2,054,600.00 and Y = 191,899.68; thence West 7,800.00 feet on the South line of said Block 5 to its most Southerly Southwest corner having Coordinates of X = 2,046,800.00 and Y = 191,899.68; thence along the boundary of said Block 5 the following courses: North 5,500.00 feet, West 2,288.64 feet and North 4,149.30 feet to its Northwest corner having Coordinates of X = 2,044,511.36 and Y = 201,548.98; thence Southeasterly on a straight line to a point having Coordinates of X = 2,045,960 and Y = 201,470; thence Southeasterly on a straight line to a point having Coordinates of X = 2,049,230 and Y = 201,255; thence Easterly on a straight line to a point having Coordinates of X = 2,051,090 and Y = 201,230; thence Easterly on a straight line to a point having Coordinates of X = 2,053,190 and Y = 201,320; thence Easterly on a straight line to a point having Coordinates of X = 2,054,600.00 and Y = 201,225.10; thence South 9,325.42 feet to the point of beginning, containing approximately 1,895.29 acres, as shown outlined in red on a plat on file in the Office of Mineral Resources, Department of Natural Resources. All bearings, distances and coordinates are based on Louisiana Coordinate System of 1927 (South Zone).

NOTE: The State of Louisiana does hereby reserve, and this lease shall be subject to, the imprescriptible right of surface use in the nature of a servitude in favor of the Department of Natural Resources, including its Offices and Commissions, for the sole purpose of implementing, constructing, servicing and maintaining approved coastal zone management and/or restoration projects. Utilization of any and all rights derived under this lease by the mineral lessee, its agents, successors or assigns, shall not interfere with nor hinder the reasonable surface use by the Department of Natural Resources, its Offices or Commissions, as hereinabove reserved.

Applicant: Woodland Petroleum Corporation

Bidder	Cash Payment	Price / Acre	Rental	Oil	Gas	Other



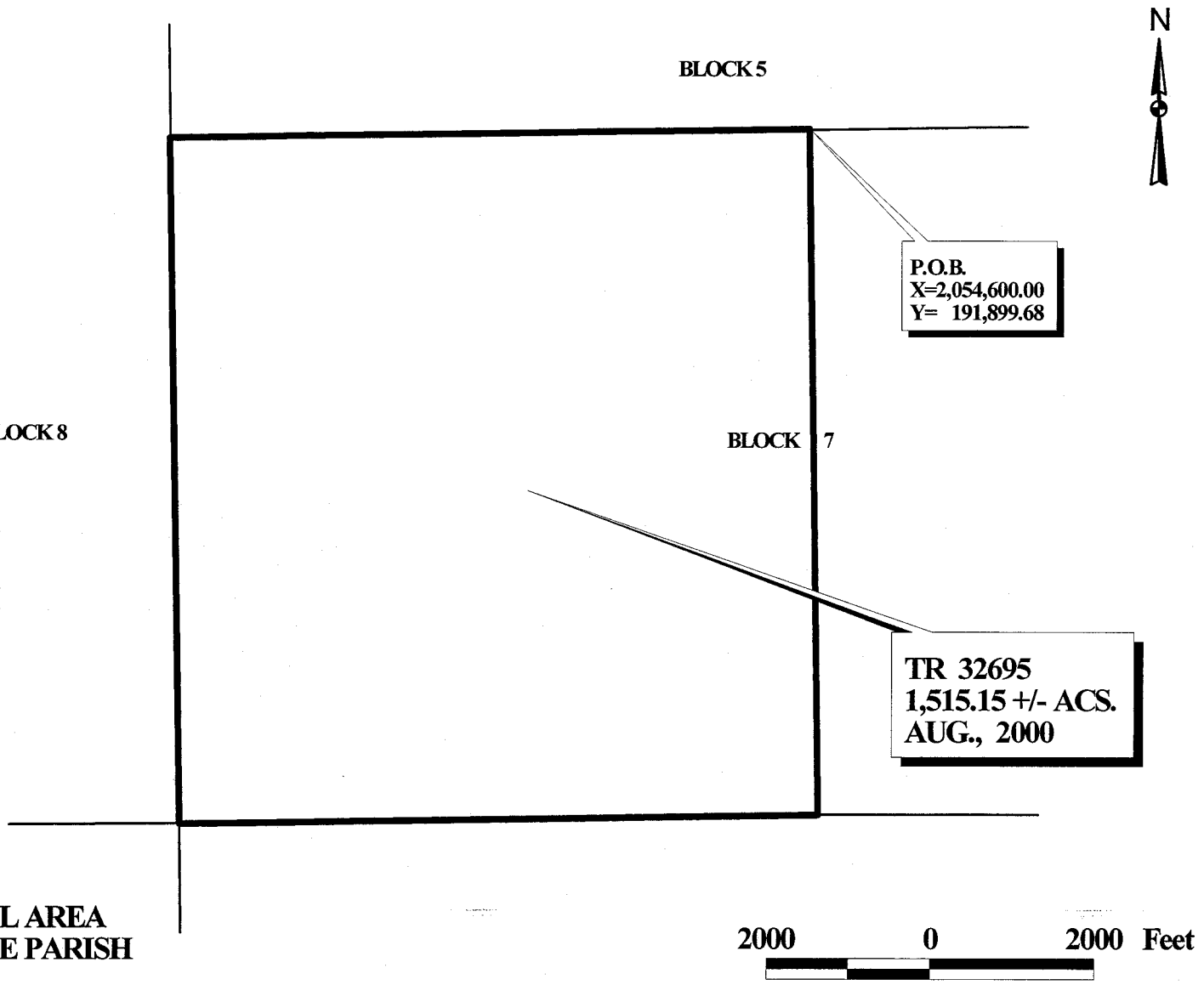
TRACT 32695 - PORTION OF BLOCK 7, SHIP SHOAL AREA, Terrebonne Parish, Louisiana

That portion of Block 7, Ship Shoal Area, Terrebonne Parish, Louisiana, belonging to the State of Louisiana and not under mineral lease on August 9, 2000, described as follows: Beginning at a point on the North line of Block 7, Ship Shoal Area, having Coordinates of X = 2,054,600.00 and Y = 191,899.68; thence South 8,461.54 feet to a point on the South line of said Block 7 having Coordinates of X = 2,054,600.00 and Y = 183,438.14; thence West 7,800.00 feet on the South line of said Block 7 to its Southwest corner having Coordinates of X = 2,046,800.00 and Y = 183,438.14; thence North 8,461.54 feet on the West line of said Block 7 to its Northwest corner having Coordinates of X = 2,046,800.00 and Y = 191,899.68; thence East 7,800.00 feet to the point of beginning, containing approximately 1,515.15 acres, as shown outlined in red on a plat on file in the Office of Mineral Resources, Department of Natural Resources. All bearings, distances and coordinates are based on Louisiana Coordinate System of 1927 (South Zone).

NOTE: The State of Louisiana does hereby reserve, and this lease shall be subject to, the imprescriptible right of surface use in the nature of a servitude in favor of the Department of Natural Resources, including its Offices and Commissions, for the sole purpose of implementing, constructing, servicing and maintaining approved coastal zone management and/or restoration projects. Utilization of any and all rights derived under this lease by the mineral lessee, its agents, successors or assigns, shall not interfere with nor hinder the reasonable surface use by the Department of Natural Resources, its Offices or Commissions, as hereinabove reserved.

Applicant: Woodland Petroleum Corporation

Bidder	Cash Payment	Price / Acre	Rental	Oil	Gas	Other



**SHIP SHOAL AREA
TERREBONNE PARISH**

OFFICIAL COPY
OFFICE OF MINERAL RESOURCES
DEPT. OF NATURAL RESOURCES
DO NOT REMOVE

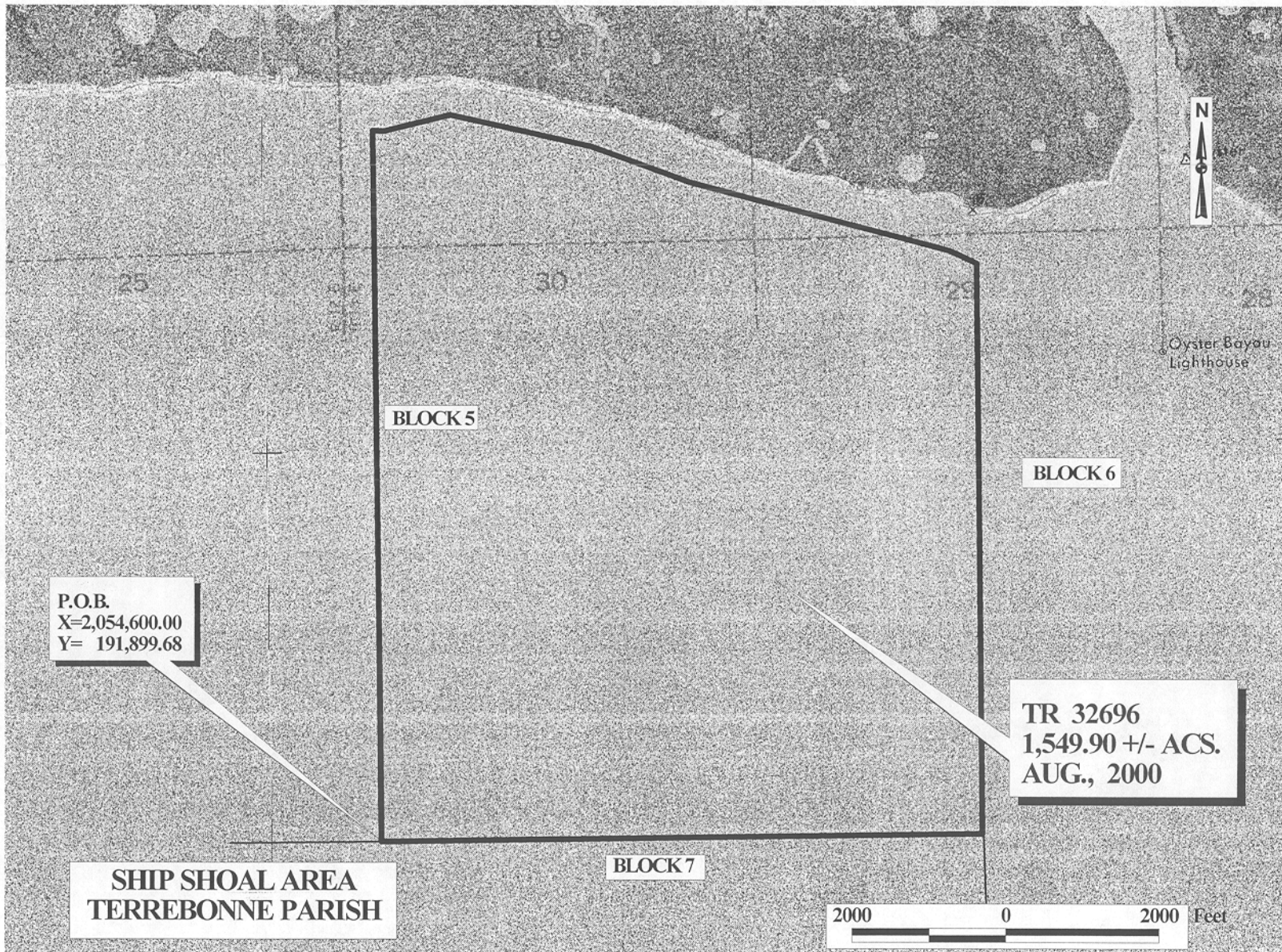
TRACT 32696 - PORTION OF BLOCK 5, SHIP SHOAL AREA, Terrebonne Parish, Louisiana

That portion of Block 5, Ship Shoal Area, Terrebonne Parish, Louisiana, belonging to the State of Louisiana and not under mineral lease on August 9, 2000, described as follows: Beginning at a point on the South line of Block 5, Ship Shoal Area, having Coordinates of X = 2,054,600.00 and Y = 191,899.68; thence North 9,325.42 feet to a point having Coordinates of X = 2,054,600.00 and Y = 201,225.10; thence Easterly on a straight line to a point having Coordinates of X = 2,054,750 and Y = 201,215; thence Northeasterly on a straight line to a point having Coordinates of X = 2,055,610 and Y = 201,415; thence Southeasterly on a straight line to a point having Coordinates of X = 2,057,430 and Y = 200,980; thence Southeasterly on a straight line to a point having Coordinates of X = 2,058,700 and Y = 200,495; thence Southeasterly on a straight line to a point having Coordinates of X = 2,062,055 and Y = 199,555; thence Southeasterly on a straight line to the Northeast corner of said Block 5 having Coordinates of X = 2,062,400.00 and Y = 199,384.89; thence South 7,485.21 feet along the East line of said Block 5 to its Southeast corner having Coordinates of X = 2,062,400.00 and Y = 191,899.68; thence West 7,800.00 feet on the South line of said Block 5 to the point of beginning, containing approximately 1,549.90 acres, as shown outlined in red on a plat on file in the Office of Mineral Resources, Department of Natural Resources. All bearings, distances and coordinates are based on Louisiana Coordinate System of 1927 (South Zone).

NOTE: The State of Louisiana does hereby reserve, and this lease shall be subject to, the imprescriptible right of surface use in the nature of a servitude in favor of the Department of Natural Resources, including its Offices and Commissions, for the sole purpose of implementing, constructing, servicing and maintaining approved coastal zone management and/or restoration projects. Utilization of any and all rights derived under this lease by the mineral lessee, its agents, successors or assigns, shall not interfere with nor hinder the reasonable surface use by the Department of Natural Resources, its Offices or Commissions, as hereinabove reserved.

Applicant: Woodland Petroleum Corporation

Bidder	Cash Payment	Price / Acre	Rental	Oil	Gas	Other



P.O.B.
X=2,054,600.00
Y= 191,899.68

BLOCK 5

BLOCK 6

TR 32696
1,549.90 +/- ACS.
AUG., 2000

SHIP SHOAL AREA
TERREBONNE PARISH

BLOCK 7

2000 0 2000 Feet

OFFICIAL COPY
OFFICE OF MINERAL RESOURCES
DEPT. OF NATURAL RESOURCES
DO NOT REMOVE

TRACT 32697 - PORTION OF BLOCK 7, SHIP SHOAL AREA, Terrebonne Parish, Louisiana

That portion of Block 7, Ship Shoal Area, Terrebonne Parish, Louisiana, belonging to the State of Louisiana and not under mineral lease on August 9, 2000, described as follows: Beginning at a point on the North line of Block 7, Ship Shoal Area, having Coordinates of X = 2,054,600.00 and Y = 191,899.68; thence East 7,800.00 feet on the North line of said Block 7 to its Northeast corner having Coordinates of X = 2,062,400.00 and Y = 191,899.68; thence South 8,461.54 feet on the East line of said Block 7 to its Southeast corner having Coordinates of X = 2,062,400.00 and Y = 183,438.14; thence West 7,800.00 feet on the South line of said Block 7 to a point having Coordinates of X = 2,054,600.00 and Y = 183,438.14; thence North 8,461.54 feet to the point of beginning, containing approximately 1,515.15 acres, as shown outlined in red on a plat on file in the Office of Mineral Resources, Department of Natural Resources. All bearings, distances and coordinates are based on Louisiana Coordinate System of 1927 (South Zone).

NOTE: The State of Louisiana does hereby reserve, and this lease shall be subject to, the imprescriptible right of surface use in the nature of a servitude in favor of the Department of Natural Resources, including its Offices and Commissions, for the sole purpose of implementing, constructing, servicing and maintaining approved coastal zone management and/or restoration projects. Utilization of any and all rights derived under this lease by the mineral lessee, its agents, successors or assigns, shall not interfere with nor hinder the reasonable surface use by the Department of Natural Resources, its Offices or Commissions, as hereinabove reserved.

Applicant: Woodland Petroleum Corporation

Bidder	Cash Payment	Price / Acre	Rental	Oil	Gas	Other

P.O.B.
X=2,054,600.00
Y= 191,899.68

BLOCK 5



TR 32697
1,515.15 +/- ACS.
AUG., 2000

BLOCK 7

BLOCK 6

BLOCK 15

**SHIP SHOAL AREA
TERREBONNE PARISH**



OFFICIAL COPY
OFFICE OF MINERAL RESOURCES
DEPT. OF NATURAL RESOURCES
DO NOT REMOVE