

TR 32687
2,500.00 +/- ACS
AUG., 2000



BLK. 10

BLK. 9

BLK. 8

P.O.B.
X=1,317,661.47
Y= 393,790.24

BLK. 21

BLK. 22

BLK. 23

WEST CAMERON AREA, REVISED
CAMERON PARISH



OFFICIAL COPY
OFFICE OF MINERAL RESOURCES
DEPT. OF NATURAL RESOURCES
DO NOT REMOVE

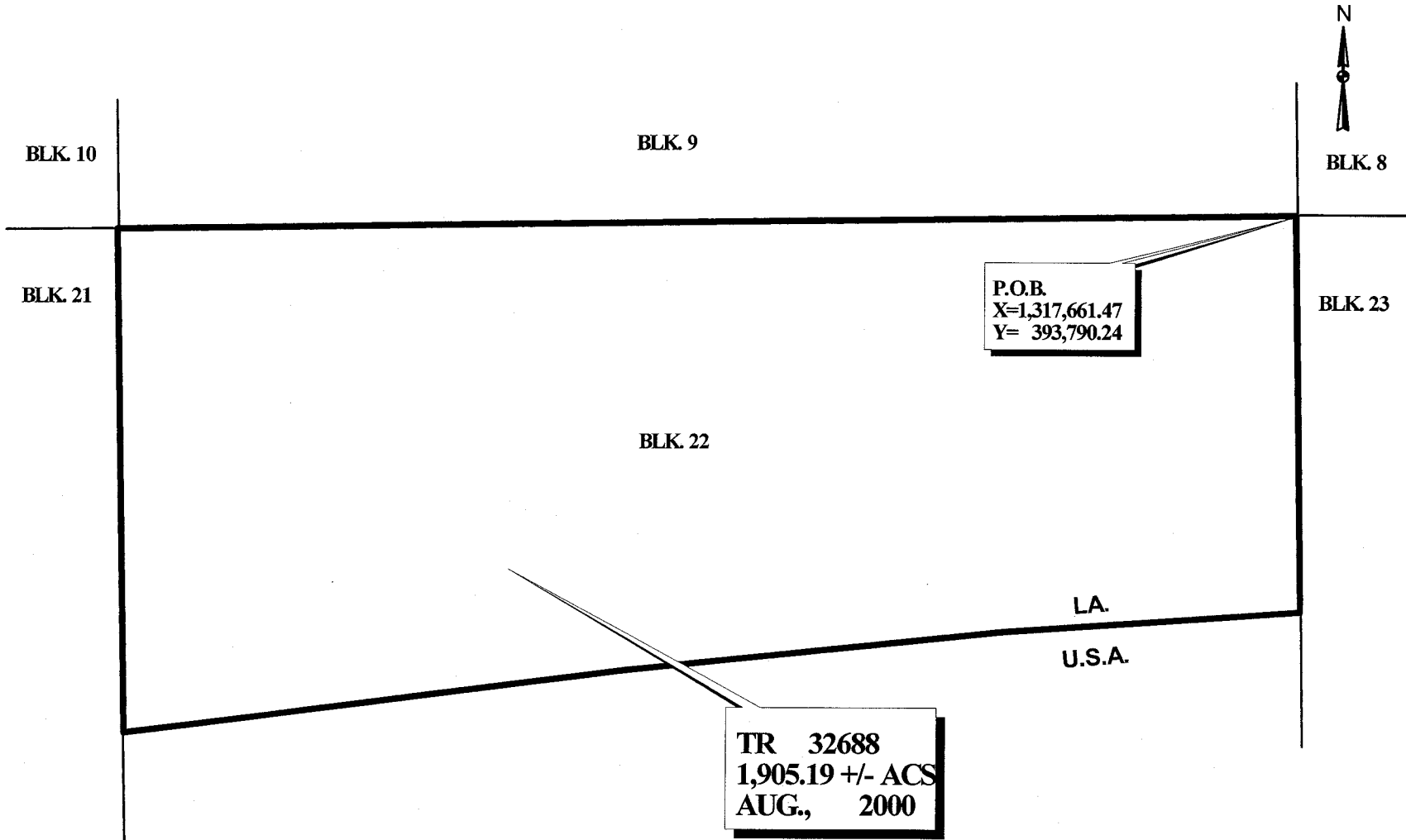
TRACT 32688 - PORTION OF BLOCK 22, WEST CAMERON AREA, REVISED, Cameron Parish, Louisiana

That portion of Block 22, West Cameron Area, Revised, Cameron Parish, Louisiana, belonging to the State of Louisiana and not under mineral lease on August 9, 2000, described as follows: Beginning at the Northeast corner of Block 22, West Cameron Area, Revised, having Coordinates of X = 1,317,661.47 and Y = 393,790.24; thence South 5,031.10 feet on the East line of said Block 22 to a point having Coordinates of X = 1,317,661.47 and Y = 388,759.14; thence Southwesterly on a straight line to a point having Coordinates of X = 1,313,961 and Y = 388,548; thence Southwesterly on a straight line to a point having Coordinates of X = 1,309,176 and Y = 388,114; thence Southwesterly on a straight line to a point on the West line of said Block 22, having Coordinates of X = 1,302,903.42 and Y = 387,395.08; thence North 6,395.16 feet on said West line to the Northwest corner of said Block 22; thence East 14,758.05 feet on the North line of said Block 22 to the point of beginning, containing approximately 1,905.19 acres, as shown outlined in red on a plat on file in the Office of Mineral Resources, Department of Natural Resources, **LESS AND EXCEPT** that portion thereof, if any, which is more than three nautical miles from the coast line as determined by the Report of the Special Master in the litigation in the Supreme Court of the United States styled United States v. State of Louisiana et al No. 9 Original, said three mile line as set out in the June, 1975, decree of the Supreme Court. All bearings, distances and coordinates are based on Louisiana Coordinate System of 1927 (South Zone).

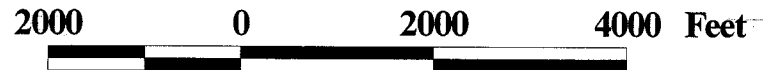
NOTE: The State of Louisiana does hereby reserve, and this lease shall be subject to, the imprescriptible right of surface use in the nature of a servitude in favor of the Department of Natural Resources, including its Offices and Commissions, for the sole purpose of implementing, constructing, servicing and maintaining approved coastal zone management and/or restoration projects. Utilization of any and all rights derived under this lease by the mineral lessee, its agents, successors or assigns, shall not interfere with nor hinder the reasonable surface use by the Department of Natural Resources, its Offices or Commissions, as hereinabove reserved.

Applicant: Ric Bajon & Associates

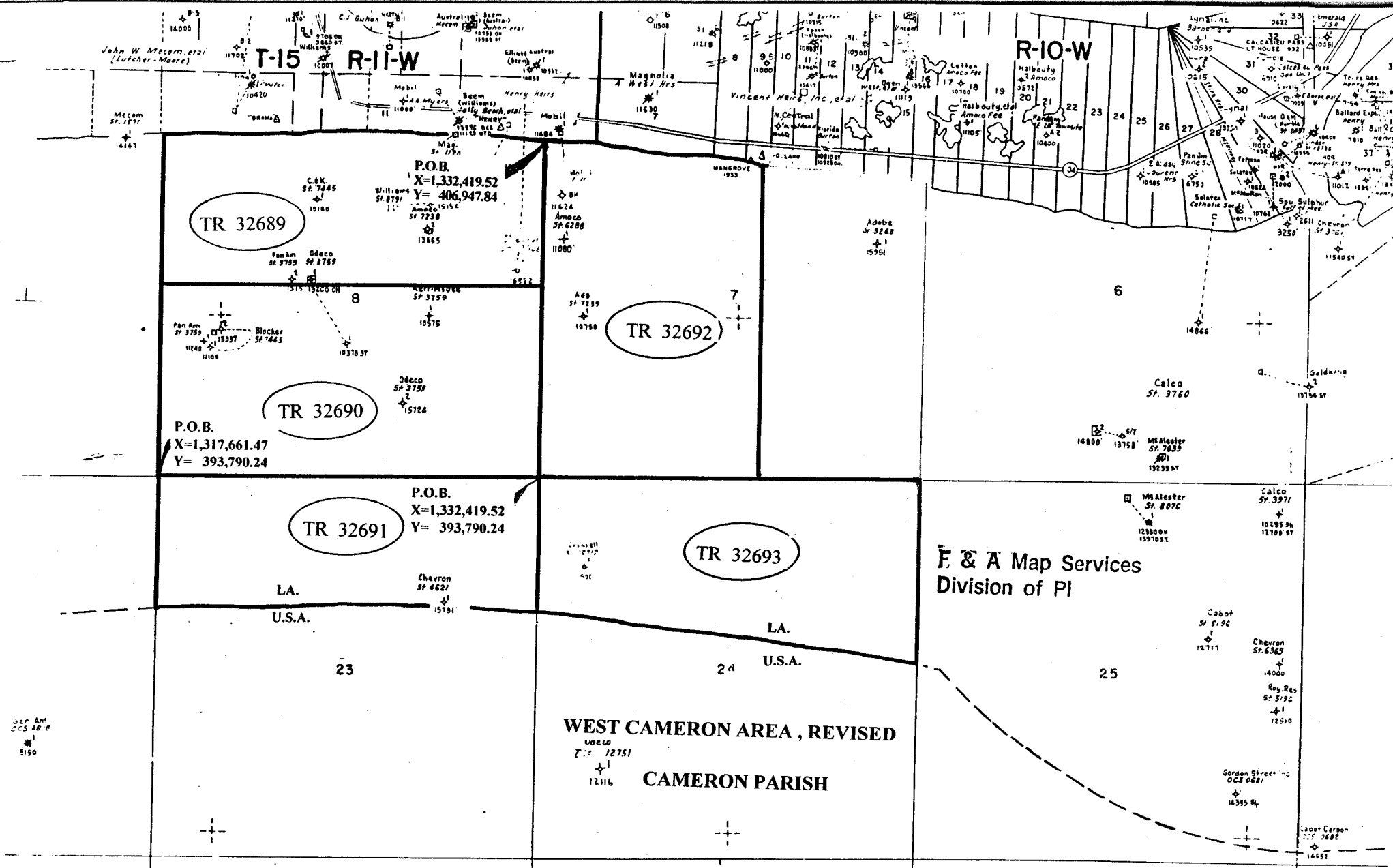
Bidder	Cash Payment	Price / Acre	Rental	Oil	Gas	Other



**WEST CAMERON AREA, REVISED
CAMERON PARISH**



OFFICIAL COPY
OFFICE OF MINERAL RESOURCES
DEPT. OF NATURAL RESOURCES
DO NOT REMOVE



NOT TO BE USED WITH A PORTION PID FOR INFORMATIONAL PURPOSES ONLY!

MAP NOT TO SCALE

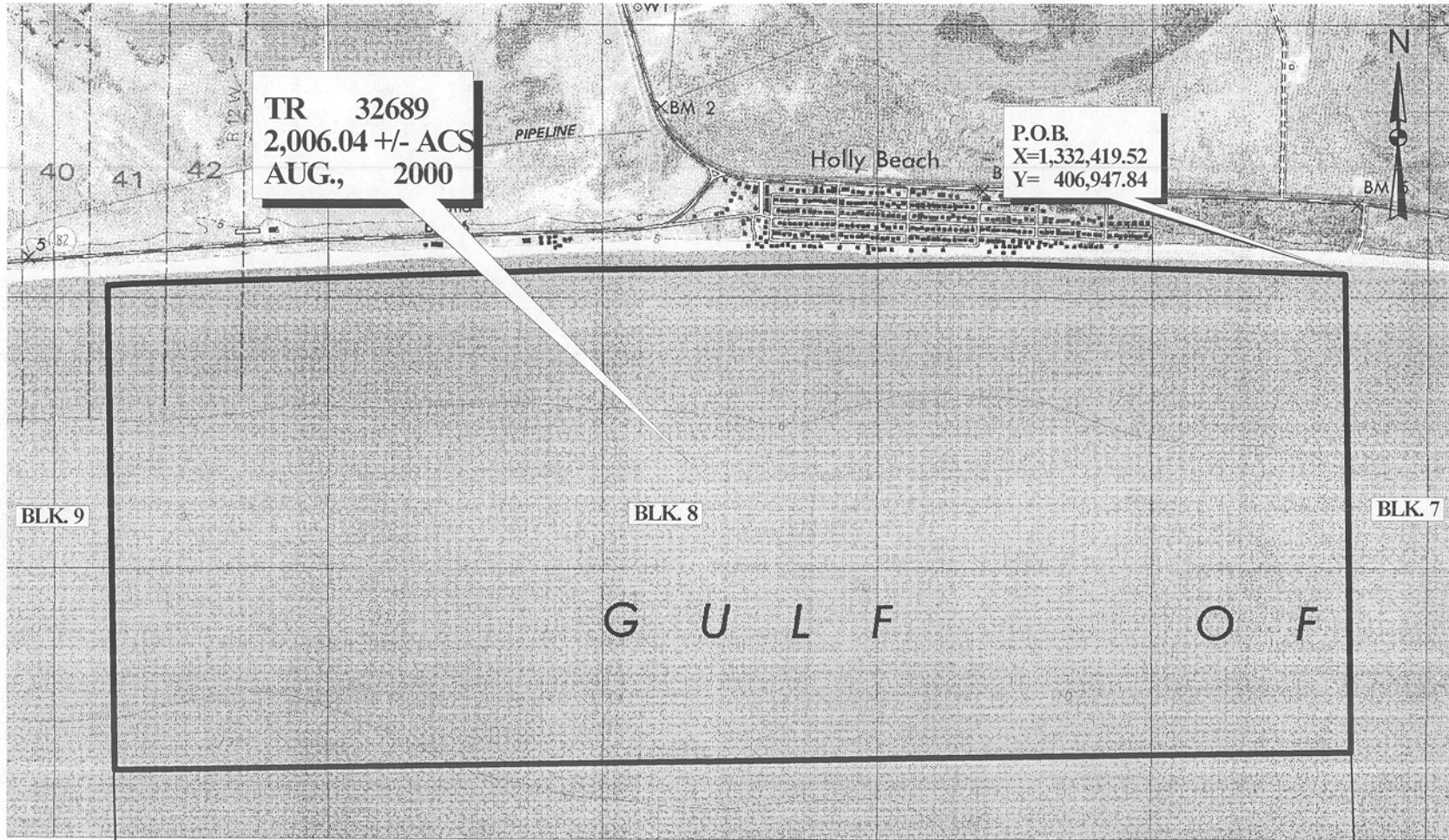
TRACT 32689 - PORTION OF BLOCK 8, WEST CAMERON AREA, REVISED, Cameron Parish, Louisiana

That portion of Block 8, West Cameron Area, Revised, Cameron Parish, Louisiana, belonging to the State of Louisiana and not under mineral lease on August 9, 2000, described as follows: Beginning at the Northeast corner of Block 8, West Cameron Area, Revised, having Coordinates of X = 1,332,419.52 and Y = 406,947.84; thence on the North line of said Block 8 the following courses: Northwesterly on a straight line to a point having Coordinates of X = 1,328,473 and Y = 407,126; Northwesterly on a straight line to a point having Coordinates of X = 1,323,205 and Y = 407,138; Southwesterly on a straight line to a point having Coordinates of X = 1,317,944 and Y = 407,045 and Southwesterly on a straight line to the Northwest corner of said Block 8 having Coordinates of X = 1,317,661.47 and Y = 407,028.93; thence South 5,859.67 feet on the West line of said Block 8 to a point having Coordinates of X = 1,317,661.47 and Y = 401,169.26; thence East 14,758.05 feet to a point on the East line of said Block 8 having Coordinates of X = 1,332,419.52 and Y = 401,169.26; thence North 5,778.58 feet on the East line of said Block 8 to the point of beginning, containing approximately **2,006.04 acres**, as shown outlined in red on a plat on file in the Office of Mineral Resources, Department of Natural Resources. All bearings, distances and coordinates are based on Louisiana Coordinate System of 1927 (South Zone).

NOTE: The State of Louisiana does hereby reserve, and this lease shall be subject to, the imprescriptible right of surface use in the nature of a servitude in favor of the Department of Natural Resources, including its Offices and Commissions, for the sole purpose of implementing, constructing, servicing and maintaining approved coastal zone management and/or restoration projects. Utilization of any and all rights derived under this lease by the mineral lessee, its agents, successors or assigns, shall not interfere with nor hinder the reasonable surface use by the Department of Natural Resources, its Offices or Commissions, as hereinabove reserved.

Applicant: Lloyd Energy Corporation

Bidder	Cash Payment	Price / Acre	Rental	Oil	Gas	Other



TR 32689
 2,006.04 +/- ACS
 AUG., 2000

P.O.B.
 X=1,332,419.52
 Y= 406,947.84

BLK. 9

BLK. 8

BLK. 7

G U L F O F

WEST CAMERON AREA, REVISED
 CAMERON PARISH



OFFICIAL COPY
 OFFICE OF MINERAL RESOURCES
 DEPT. OF NATURAL RESOURCES
 DO NOT REMOVE

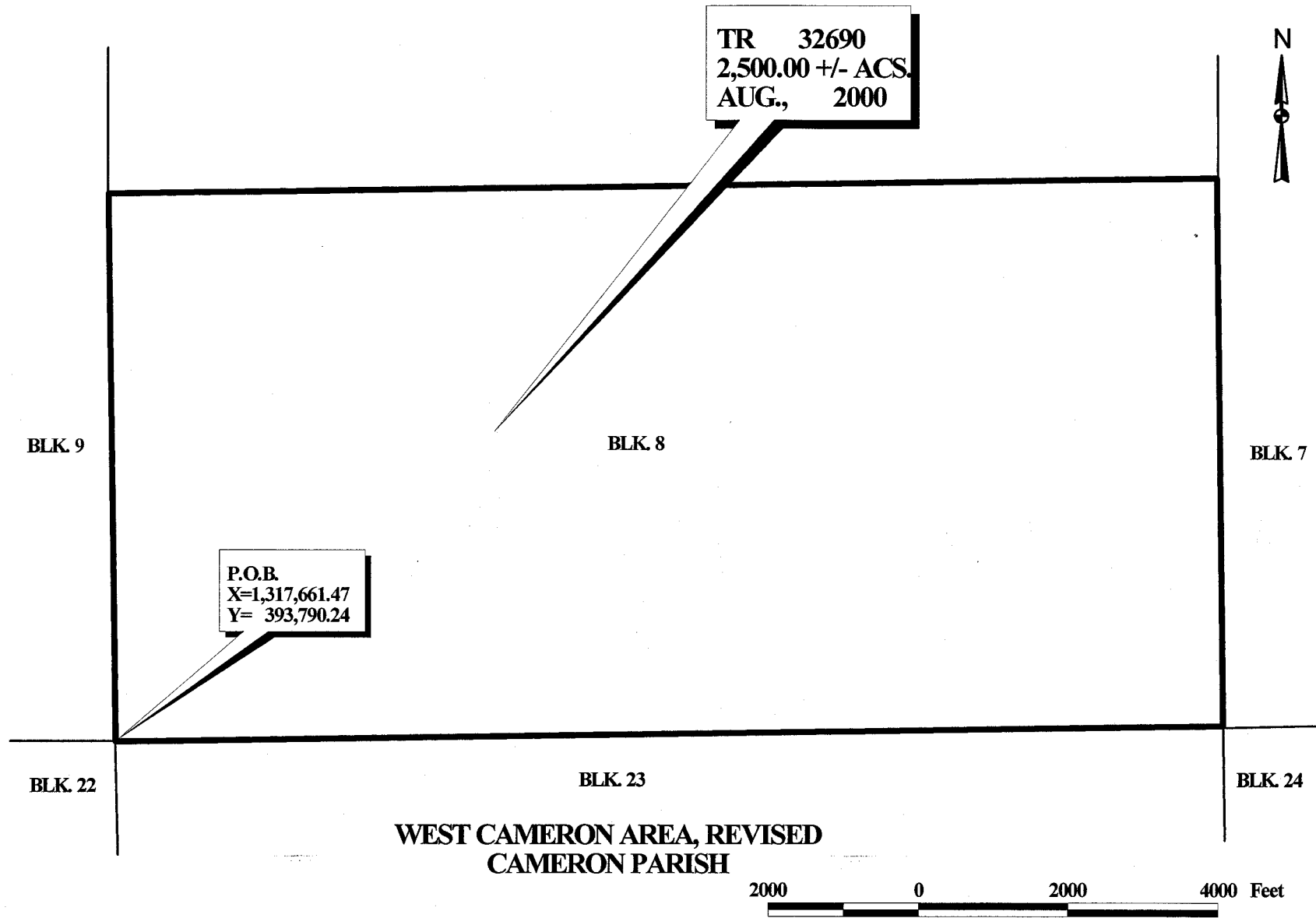
TRACT 32690 - PORTION OF BLOCK 8, WEST CAMERON AREA, REVISED, Cameron Parish, Louisiana

That portion of Block 8, West Cameron Area, Revised, Cameron Parish, Louisiana, belonging to the State of Louisiana and not under mineral lease on August 9, 2000, described as follows: Beginning at the Southwest corner of Block 8, West Cameron Area, Revised, having Coordinates of X = 1,317,661.47 and Y = 393,790.24; thence North 7,379.02 feet on the West line of said Block 8 to a point; thence East 14,758.05 feet to a point on the East line of said Block 8 having Coordinates of X = 1,332,419.52 and Y = 401,169.26; thence South 7,379.02 feet on the East line of said Block 8 to its Southeast corner; thence West 14,758.05 feet on the South line of said Block 8 to the point of beginning, containing approximately 2,500.00 acres, as shown outlined in red on a plat on file in the Office of Mineral Resources, Department of Natural Resources. All bearings, distances and coordinates are based on Louisiana Coordinate System of 1927 (South Zone).

NOTE: The State of Louisiana does hereby reserve, and this lease shall be subject to, the imprescriptible right of surface use in the nature of a servitude in favor of the Department of Natural Resources, including its Offices and Commissions, for the sole purpose of implementing, constructing, servicing and maintaining approved coastal zone management and/or restoration projects. Utilization of any and all rights derived under this lease by the mineral lessee, its agents, successors or assigns, shall not interfere with nor hinder the reasonable surface use by the Department of Natural Resources, its Offices or Commissions, as hereinabove reserved.

Applicant: Lloyd Energy Corporation

Bidder	Cash Payment	Price / Acre	Rental	Oil	Gas	Other



TR 32690
 2,500.00 +/- ACS.
 AUG., 2000

P.O.B.
 X=1,317,661.47
 Y= 393,790.24

BLK. 9

BLK. 8

BLK. 7

BLK. 22

BLK. 23

BLK. 24

WEST CAMERON AREA, REVISED
 CAMERON PARISH



OFFICIAL COPY
 OFFICE OF MINERAL RESOURCES
 DEPT. OF NATURAL RESOURCES
 DO NOT REMOVE

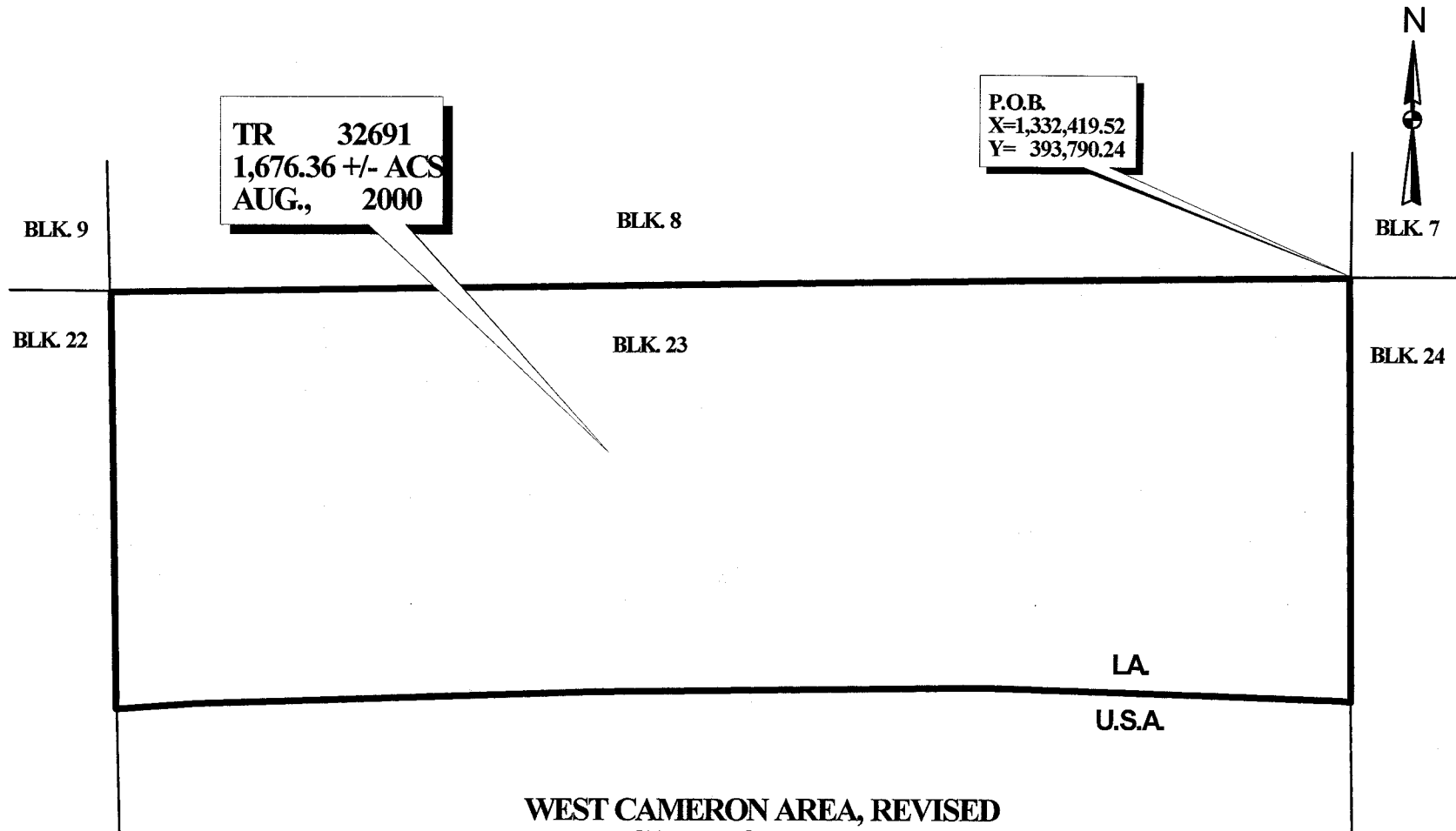
TRACT 32691 - PORTION OF BLOCK 23, WEST CAMERON AREA, REVISED, Cameron Parish, Louisiana

That portion of Block 23, West Cameron Area, Revised, Cameron Parish, Louisiana, belonging to the State of Louisiana and not under mineral lease on August 9, 2000, described as follows: Beginning at the Northeast corner of Block 23, West Cameron Area, Revised, having Coordinates of X = 1,332,419.52 and Y = 393,790.24; thence South 5,108.59 feet on the East line of said Block 23 to a point having Coordinates of X = 1,332,419.52 and Y = 388,681.65; thence Westerly on a straight line to a point having Coordinates of X = 1,332,310 and Y = 388,694; thence Westerly on a straight line to a point having Coordinates of X = 1,328,041 and Y = 388,886; thence Westerly on a straight line to a point having Coordinates of X = 1,323,345 and Y = 388,897; thence Westerly on a straight line to a point having Coordinates of X = 1,318,623 and y = 388,814; thence Westerly on a straight line to a point on the West line of said Block 23 having Coordinates of X = 1,317,661.47 and y = 388,759.14; thence North 5,031.10 feet on said West line to the Northwest corner of said Block 23; thence East 14,758.05 feet on the North line of said Block 23 to the point of beginning, containing approximately 1,676.36 acres, as shown outlined in red on a plat on file in the Office of Mineral Resources, Department of Natural Resources, **LESS AND EXCEPT** that portion thereof, if any, which is more than three nautical miles from the coast line as determined by the Report of the Special Master in the litigation in the Supreme Court of the United States styled United States v. State of Louisiana et al No. 9 Original, said three mile line as set out in the June, 1975, decree of the Supreme Court. All bearings, distances and coordinates are based on Louisiana Coordinate System of 1927 (South Zone).

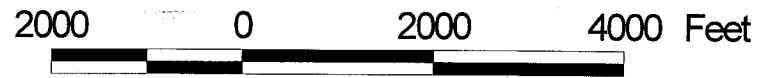
NOTE: The State of Louisiana does hereby reserve, and this lease shall be subject to, the imprescriptible right of surface use in the nature of a servitude in favor of the Department of Natural Resources, including its Offices and Commissions, for the sole purpose of implementing, constructing, servicing and maintaining approved coastal zone management and/or restoration projects. Utilization of any and all rights derived under this lease by the mineral lessee, its agents, successors or assigns, shall not interfere with nor hinder the reasonable surface use by the Department of Natural Resources, its Offices or Commissions, as hereinabove reserved.

Applicant: Lloyd Energy Corporation

Bidder	Cash Payment	Price / Acre	Rental	Oil	Gas	Other



**WEST CAMERON AREA, REVISED
CAMERON PARISH**



OFFICIAL COPY
OFFICE OF MINERAL RESOURCES
DEPT. OF NATURAL RESOURCES
DO NOT REMOVE

TRACT 32692 - PORTION OF BLOCK 7, WEST CAMERON AREA, REVISED, Cameron Parish, Louisiana

That portion of Block 7, West Cameron Area, Revised, Cameron Parish, Louisiana, belonging to the State of Louisiana and not under mineral lease on August 9, 2000, described as follows: Beginning at the Southwest corner of Block 7, West Cameron Area, Revised, having Coordinates of X = 1,332,419.52 and Y = 393,790.24; thence North 13,157.60 feet on the West line of said Block 7 to its Northwest corner having Coordinates of X = 1,332,419.52 and Y = 406,947.84; thence on the Northern boundary of said Block 7 to the following courses: Southeasterly on a straight line to a point having Coordinates of X = 1,333,745 and Y = 406,888 and Southeasterly on a straight line to a point having Coordinates of X = 1,340,954.51 and Y = 406,075.47; thence South 12,285.23 feet to a point on the South line of said Block 7 having Coordinates of X = 1,340,954.51 and Y = 393,790.24; thence West 8,534.99 feet on the South line of said Block 7 to the point of beginning, containing approximately 2,500.00 acres, as shown outlined in red on a plat on file in the Office of Mineral Resources, Department of Natural Resources. All bearings, distances and coordinates are based on Louisiana Coordinate System of 1927 (South Zone).

NOTE: The State of Louisiana does hereby reserve, and this lease shall be subject to, the imprescriptible right of surface use in the nature of a servitude in favor of the Department of Natural Resources, including its Offices and Commissions, for the sole purpose of implementing, constructing, servicing and maintaining approved coastal zone management and/or restoration projects. Utilization of any and all rights derived under this lease by the mineral lessee, its agents, successors or assigns, shall not interfere with nor hinder the reasonable surface use by the Department of Natural Resources, its Offices or Commissions, as hereinabove reserved.

Applicant: Lloyd Energy Corporation

Bidder	Cash Payment	Price / Acre	Rental	Oil	Gas	Other