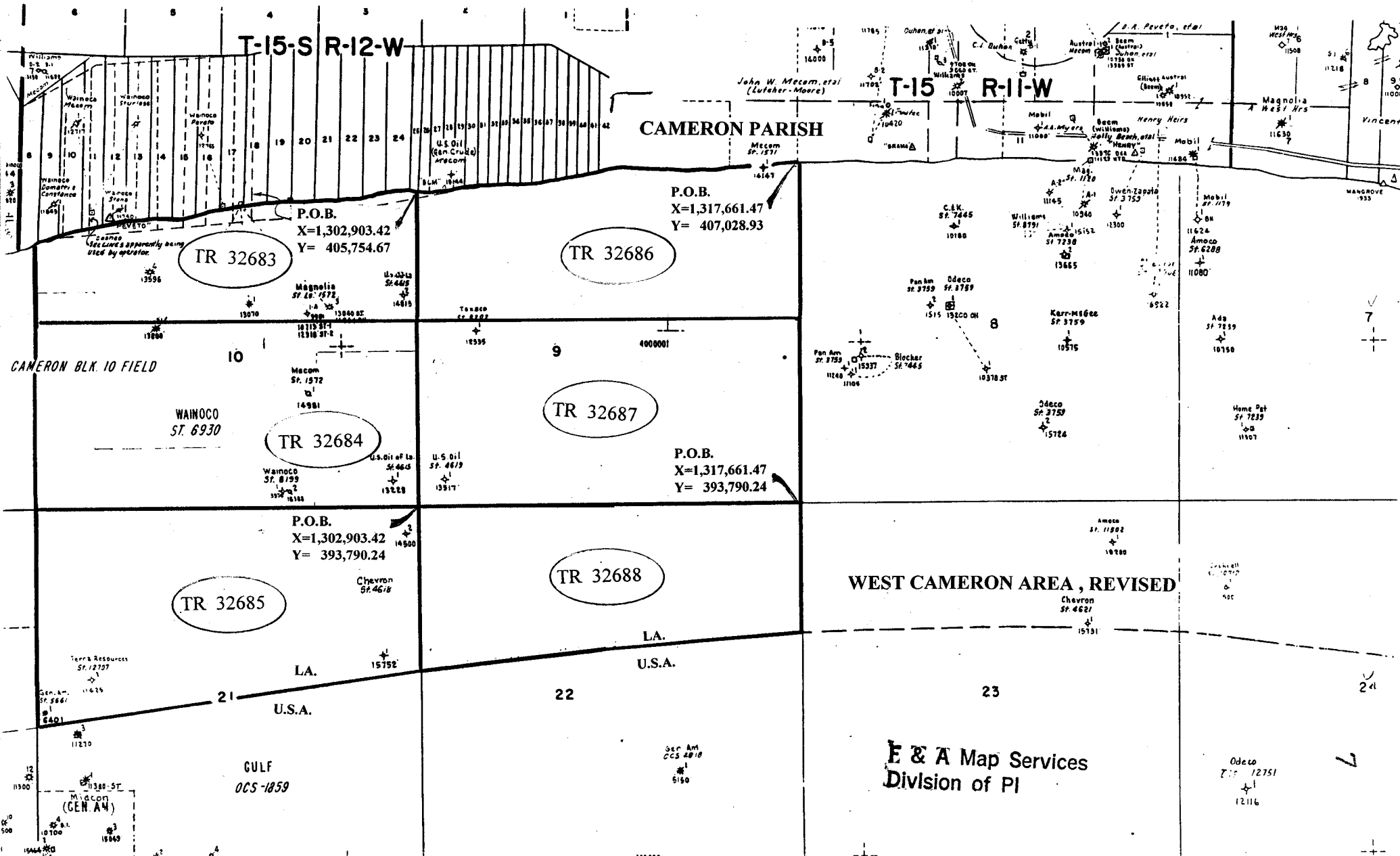


**OFFSHORE**

**TRACTS**

NOT TO BE USED WITH A PORTION BID  
FOR INFORMATIONAL PURPOSES ONLY!

MAP NOT TO SCALE



T-15-S R-12-W

T-15 R-11-W

CAMERON PARISH

WEST CAMERON AREA, REVISED

E & A Map Services  
Division of PI

TR 32683

TR 32686

TR 32687

TR 32684

TR 32688

TR 32685

P.O.B.  
X=1,302,903.42  
Y= 405,754.67

P.O.B.  
X=1,317,661.47  
Y= 407,028.93

P.O.B.  
X=1,317,661.47  
Y= 393,790.24

P.O.B.  
X=1,302,903.42  
Y= 393,790.24

CAMERON BLK. 10 FIELD

WAINOCO  
ST. 6930

GULF  
OCS-1859

GEN. AM.  
(GEN. AM.)

LA.  
U.S.A.

Odeco  
ST. 12751  
12116

Gen. Am  
CCS 4810  
5150

Hess Pet  
ST. 7235  
11507

Odeco  
ST. 3759  
15724

Kerr-16666  
ST. 3759  
10575

C.E.K.  
ST. 7445  
10160

Pan Am  
ST. 3759  
11160

Blocker  
ST. 7445  
11106

Ade  
ST. 7239  
10750

Mobil  
ST. 1179  
11080

Amoco  
ST. 6288  
11080

Williams  
ST. 8791  
11645

Williams  
ST. 7238  
13665

Williams  
ST. 8791  
10240

Williams  
ST. 8791  
13500

Williams  
ST. 8791  
11160

Williams  
ST. 8791  
10370

Williams  
ST. 8791  
10370

Williams  
ST. 8791  
10370

Williams  
ST. 8791  
10370

Williams  
ST. 8791  
10370

Williams  
ST. 8791  
10370

Williams  
ST. 8791  
10370

Williams  
ST. 8791  
10370

Williams  
ST. 8791  
10370

Williams  
ST. 8791  
10370

Williams  
ST. 8791  
10370

Williams  
ST. 8791  
10370

Williams  
ST. 8791  
10370

Williams  
ST. 8791  
10370

Williams  
ST. 8791  
10370

Williams  
ST. 8791  
10370

Williams  
ST. 8791  
10370

Williams  
ST. 8791  
10370

Williams  
ST. 8791  
10370

Williams  
ST. 8791  
10370

Williams  
ST. 8791  
10370

Williams  
ST. 8791  
10370

Williams  
ST. 8791  
10370

Williams  
ST. 8791  
10370

Williams  
ST. 8791  
10370

Williams  
ST. 8791  
10370

Williams  
ST. 8791  
10370

Williams  
ST. 8791  
10370

Williams  
ST. 8791  
10370

Williams  
ST. 8791  
10370

Williams  
ST. 8791  
10370

Williams  
ST. 8791  
10370

Williams  
ST. 8791  
10370

Williams  
ST. 8791  
10370

Williams  
ST. 8791  
10370

Williams  
ST. 8791  
10370

Williams  
ST. 8791  
10370

Williams  
ST. 8791  
10370

Williams  
ST. 8791  
10370

Williams  
ST. 8791  
10370

Williams  
ST. 8791  
10370

Williams  
ST. 8791  
10370

Williams  
ST. 8791  
10370

Williams  
ST. 8791  
10370

Williams  
ST. 8791  
10370

Williams  
ST. 8791  
10370

Williams  
ST. 8791  
10370

Williams  
ST. 8791  
10370

Williams  
ST. 8791  
10370

Williams  
ST. 8791  
10370

Williams  
ST. 8791  
10370

Williams  
ST. 8791  
10370

Williams  
ST. 8791  
10370

Williams  
ST. 8791  
10370

Williams  
ST. 8791  
10370

Williams  
ST. 8791  
10370

Williams  
ST. 8791  
10370

Williams  
ST. 8791  
10370

Williams  
ST. 8791  
10370

Williams  
ST. 8791  
10370

Williams  
ST. 8791  
10370

Williams  
ST. 8791  
10370

Williams  
ST. 8791  
10370

Williams  
ST. 8791  
10370

Williams  
ST. 8791  
10370

Williams  
ST. 8791  
10370

Williams  
ST. 8791  
10370

Williams  
ST. 8791  
10370

Williams  
ST. 8791  
10370

Williams  
ST. 8791  
10370

Williams  
ST. 8791  
10370

Williams  
ST. 8791  
10370

Williams  
ST. 8791  
10370

Williams  
ST. 8791  
10370

Williams  
ST. 8791  
10370

Williams  
ST. 8791  
10370

Williams  
ST. 8791  
10370

Williams  
ST. 8791  
10370

Williams  
ST. 8791  
10370

Williams  
ST. 8791  
10370

Williams  
ST. 8791  
10370

Williams  
ST. 8791  
10370

Williams  
ST. 8791  
10370

Williams  
ST. 8791  
10370

Williams  
ST. 8791  
10370

Williams  
ST. 8791  
10370

Williams  
ST. 8791  
10370

Williams  
ST. 8791  
10370

Williams  
ST. 8791  
10370

Williams  
ST. 8791  
10370

Williams  
ST. 8791  
10370

Williams  
ST. 8791  
10370

Williams  
ST. 8791  
10370

Williams  
ST. 8791  
10370

Williams  
ST. 8791  
10370

Williams  
ST. 8791  
10370

Williams  
ST. 8791  
10370

Williams  
ST. 8791  
10370

Williams  
ST. 8791  
10370

Williams  
ST. 8791  
10370

Williams  
ST. 8791  
10370

Williams  
ST. 8791  
10370

Williams  
ST. 8791  
10370

Williams  
ST. 8791  
10370

Williams  
ST. 8791  
10370

Williams  
ST. 8791  
10370

Williams  
ST. 8791  
10370

Williams  
ST. 8791  
10370

Williams  
ST. 8791  
10370

Williams  
ST. 8791  
10370

Williams  
ST. 8791  
10370

Williams  
ST. 8791  
10370

Williams  
ST. 8791  
10370

Williams  
ST. 8791  
10370

Williams  
ST. 8791  
10370

Williams  
ST. 8791  
10370

Williams  
ST. 8791  
10370

Williams  
ST. 8791  
10370

Williams  
ST. 8791  
10370

Williams  
ST. 8791  
10370

Williams  
ST. 8791  
10370

Williams  
ST. 8791  
10370

Williams  
ST. 8791  
10370

Williams  
ST. 8791  
10370

Williams  
ST. 8791  
10370

Williams  
ST. 8791  
10370

Williams  
ST. 8791  
10370

Williams  
ST. 8791  
10370

Williams  
ST. 8791  
10370

Williams  
ST. 8791  
10370

Williams  
ST. 8791  
10370

Williams  
ST. 8791  
10370

Williams  
ST. 8791  
10370

Williams  
ST. 8791  
10370

Williams  
ST. 8791  
10370

Williams  
ST. 8791  
10370

Williams  
ST. 8791  
10370

Williams  
ST. 8791  
10370

Williams  
ST. 8791  
10370

Williams  
ST. 8791  
10370

Williams  
ST. 8791  
10370

Williams  
ST. 8791  
10370

Williams  
ST. 8791  
10370

Williams  
ST. 8791  
10370

Williams  
ST. 8791  
10370

Williams  
ST. 8791  
10370

Williams  
ST. 8791  
10370

Williams  
ST. 8791  
10370

Williams  
ST. 8791  
10370

Williams  
ST. 8791  
10370

Williams  
ST. 8791  
10370

Williams  
ST. 8791  
10370

Williams  
ST. 8791  
10370

Williams  
ST. 8791  
10370

Williams  
ST. 8791  
10370

Williams  
ST. 8791  
10370

Williams  
ST. 8791  
10370

Williams  
ST. 8791  
10370

Williams  
ST. 8791  
10370

Williams  
ST. 8791  
10370

Williams  
ST. 8791  
10370

Williams  
ST. 8791  
10370

Williams  
ST. 8791  
10370

Williams  
ST. 8791  
10370

Williams  
ST. 8791  
10370

Williams  
ST. 8791  
10370

Williams  
ST. 8791  
10370

Williams  
ST. 8791  
10370

Williams  
ST. 8791  
10370

Williams  
ST. 8791  
10370

Williams  
ST. 8791  
10370

Williams  
ST. 8791  
10370

Williams  
ST. 8791  
10370

Williams  
ST. 8791  
10370

Williams  
ST. 8791  
10370

Williams  
ST. 8791  
10370

Williams  
ST. 8791  
10370

Williams  
ST. 8791  
10370

Williams  
ST. 8791  
10370

Williams  
ST. 8791  
10370

Williams  
ST. 8791  
10370

Williams  
ST. 8791  
10370

**TRACT 32683 - PORTION OF BLOCK 10, WEST CAMERON AREA, REVISED, Cameron Parish, Louisiana**

That portion of Block 10, West Cameron Area, Revised, Cameron Parish, Louisiana, belonging to the State of Louisiana and not under mineral lease on August 9, 2000, described as follows: Beginning at the Northeast corner of Block 10, West Cameron Area, Revised, having Coordinates of X = 1,302,903.42 and Y = 405,754,67; thence on the Northern boundary of said Block 10 the following courses: Southwesterly on a straight line to a point having Coordinates of X = 1,296,747 and Y = 405,049 and Southwesterly on a straight line to a point having Coordinates of X = 1,291,413 and Y = 404,205; thence Southwesterly on a straight line to the Northwest corner of said Block 10 having Coordinates of X = 1,288,145.38 and Y = 403,746.49; thence South 2,577.18 feet on the West line of said Block 10 to a point; thence East 14,758.04 feet to a point on the East line of said Block 10 having Coordinates of X = 1,302,903.42 and Y = 401,169.27; thence North 4,585.40 feet on the East line of said Block 10 to the point of beginning, containing approximately 1,232.13 acres, as shown outlined in red on a plat on file in the Office of Mineral Resources, Department of Natural Resources. All bearings, distances and coordinates are based on Louisiana Coordinate System of 1927 (South Zone).

NOTE: The State of Louisiana does hereby reserve, and this lease shall be subject to, the imprescriptible right of surface use in the nature of a servitude in favor of the Department of Natural Resources, including its Offices and Commissions, for the sole purpose of implementing, constructing, servicing and maintaining approved coastal zone management and/or restoration projects. Utilization of any and all rights derived under this lease by the mineral lessee, its agents, successors or assigns, shall not interfere with nor hinder the reasonable surface use by the Department of Natural Resources, its Offices or Commissions, as hereinabove reserved.

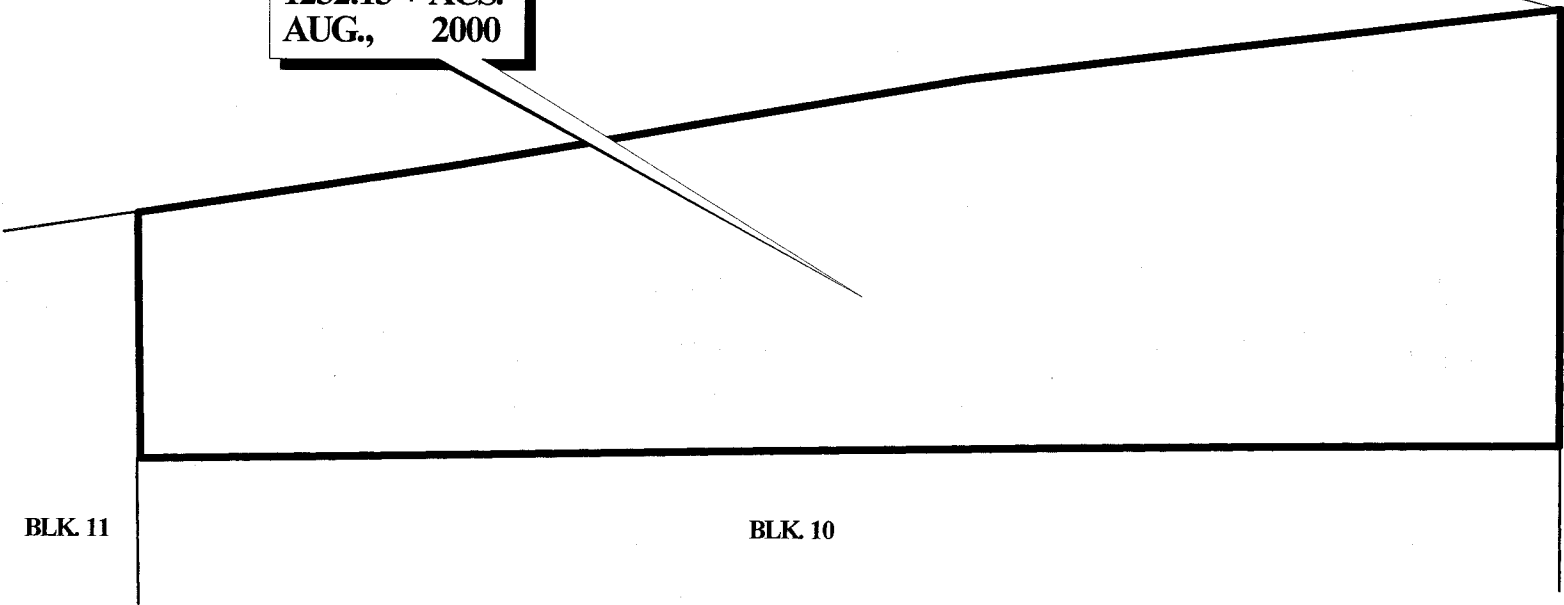
Applicant: Ric Bajon & Associates

Bidder	Cash Payment	Price / Acre	Rental	Oil	Gas	Other



P.O.B.  
X=1,302,903.42  
Y= 405,754.67

TR 32683  
1232.13 + ACS.  
AUG., 2000



BLK. 11

BLK. 10

BLK. 9

**WEST CAMERON AREA, REVISED  
CAMERON PARISH**



OFFICIAL COPY  
OFFICE OF MINERAL RESOURCES  
DEPT. OF NATURAL RESOURCES  
DO NOT REMOVE

TRACT 32684 - PORTION OF BLOCK 10, WEST CAMERON AREA, REVISED, Cameron Parish, Louisiana

That portion of Block 10, West Cameron Area, Revised, Cameron Parish, Louisiana, belonging to the State of Louisiana and not under mineral lease on August 9, 2000, described as follows: Beginning at the Southeast corner of Block 10, West Cameron Area, Revised, having Coordinates of X = 1,302,903.42 and Y = 393,790.24; thence North 7,379.03 feet on the East line of said Block 10 to a point having Coordinates of X = 1,302,903.42 and Y = 401,169.27; thence West 14,758.04 feet to a point on the West line of said Block 10 having Coordinates of X = 1,288,145.38 and Y = 401,169.27; thence South 7,379.03 feet on the West line of said Block 10 to the Southwest corner of said Block 10 having Coordinates of X = 1,288,145.38 and Y = 393,790.24; thence East 14,758.04 feet on the South line of said Block 10 to the point of beginning, containing approximately 2,500.00 acres, as shown outlined in red on a plat on file in the Office of Mineral Resources, Department of Natural Resources. All bearings, distances and coordinates are based on Louisiana Coordinate System of 1927 (South Zone).

NOTE: The State of Louisiana does hereby reserve, and this lease shall be subject to, the imprescriptible right of surface use in the nature of a servitude in favor of the Department of Natural Resources, including its Offices and Commissions, for the sole purpose of implementing, constructing, servicing and maintaining approved coastal zone management and/or restoration projects. Utilization of any and all rights derived under this lease by the mineral lessee, its agents, successors or assigns, shall not interfere with nor hinder the reasonable surface use by the Department of Natural Resources, its Offices or Commissions, as hereinabove reserved.

Applicant: Ric Bajon & Associates

Bidder	Cash Payment	Price / Acre	Rental	Oil	Gas	Other

TR 32684  
2,500.00 +/- ACS  
AUG., 2000



BLK. 11

BLK. 10

BLK. 9

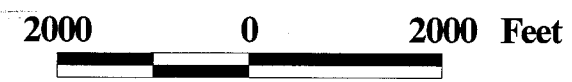
P.O.B.  
X=1,302,903.42  
Y= 393,790.24

BLK. 20

BLK. 21

BLK. 22

WEST CAMERON AREA, REVISED  
CAMERON PARISH



OFFICIAL COPY  
OFFICE OF MINERAL RESOURCES  
DEPT. OF NATURAL RESOURCES  
DO NOT REMOVE

//

**TRACT 32685 - PORTION OF BLOCK 21, WEST CAMERON AREA, REVISED, Cameron Parish, Louisiana**

That portion of Block 21, West Cameron Area, Revised, Cameron Parish, Louisiana, belonging to the State of Louisiana and not under mineral lease on August 9, 2000, described as follows: Beginning at the Northeast corner of Block 21, West Cameron Area, Revised, having Coordinates of X = 1,302,903.42 and Y = 393,790.24; thence West 14,758.04 feet on the North line of said Block 21 to its Northwest corner having Coordinates of X = 1,288,145.38 and Y = 393,790.24; thence South 7,379.24 feet on the West line of said Block 21 to a point having Coordinates of X = 1,288,145.38 and Y = 386,411.00; thence East 7,521.50 feet to the intersection with the 1975 Supreme Court Decree 3 Mile Line having Coordinates of X = 1,295,666.88 and Y = 386,411.00; thence on the said 3 Mile Line the following courses: Northeasterly on a straight line to a point having Coordinates of X = 1,299,212 and Y = 386,972 and Northeasterly on a straight line to its intersection with the East line of said Block 21 having Coordinates of X = 1,302,903.42 and Y = 387,395.08; thence North 6,395.16 feet on the East line of said Block 21 to the point of beginning, containing approximately 2,411.78 acres, as shown outlined in red on a plat on file in the Office of Mineral Resources, Department of Natural Resources, **LESS AND EXCEPT** that portion thereof, if any, which is more than three nautical miles from the coast line as determined by the Report of the Special Master in the litigation in the Supreme Court of the United States styled United States v. State of Louisiana et al No. 9 Original, said three mile line as set out in the June, 1975, decree of the Supreme Court. All bearings, distances and coordinates are based on Louisiana Coordinate System of 1927 (South Zone).

NOTE: The State of Louisiana does hereby reserve, and this lease shall be subject to, the imprescriptible right of surface use in the nature of a servitude in favor of the Department of Natural Resources, including its Offices and Commissions, for the sole purpose of implementing, constructing, servicing and maintaining approved coastal zone management and/or restoration projects. Utilization of any and all rights derived under this lease by the mineral lessee, its agents, successors or assigns, shall not interfere with nor hinder the reasonable surface use by the Department of Natural Resources, its Offices or Commissions, as hereinabove reserved.

Applicant: Ric Bajon & Associates

Bidder	Cash Payment	Price / Acre	Rental	Oil	Gas	Other

TR 32685  
2,411.78 +/- ACS  
AUG., 2000

BLK. 10

P.O.B.  
X=1,302,903.42  
Y= 393,790.24

BLK. 21

LA  
USA

WEST CAMERON AREA, REVISED  
CAMERON PARISH

2000 0 2000 Feet

OFFICIAL COPY  
OFFICE OF MINERAL RESOURCES  
DEPT. OF NATURAL RESOURCES  
DO NOT REMOVE



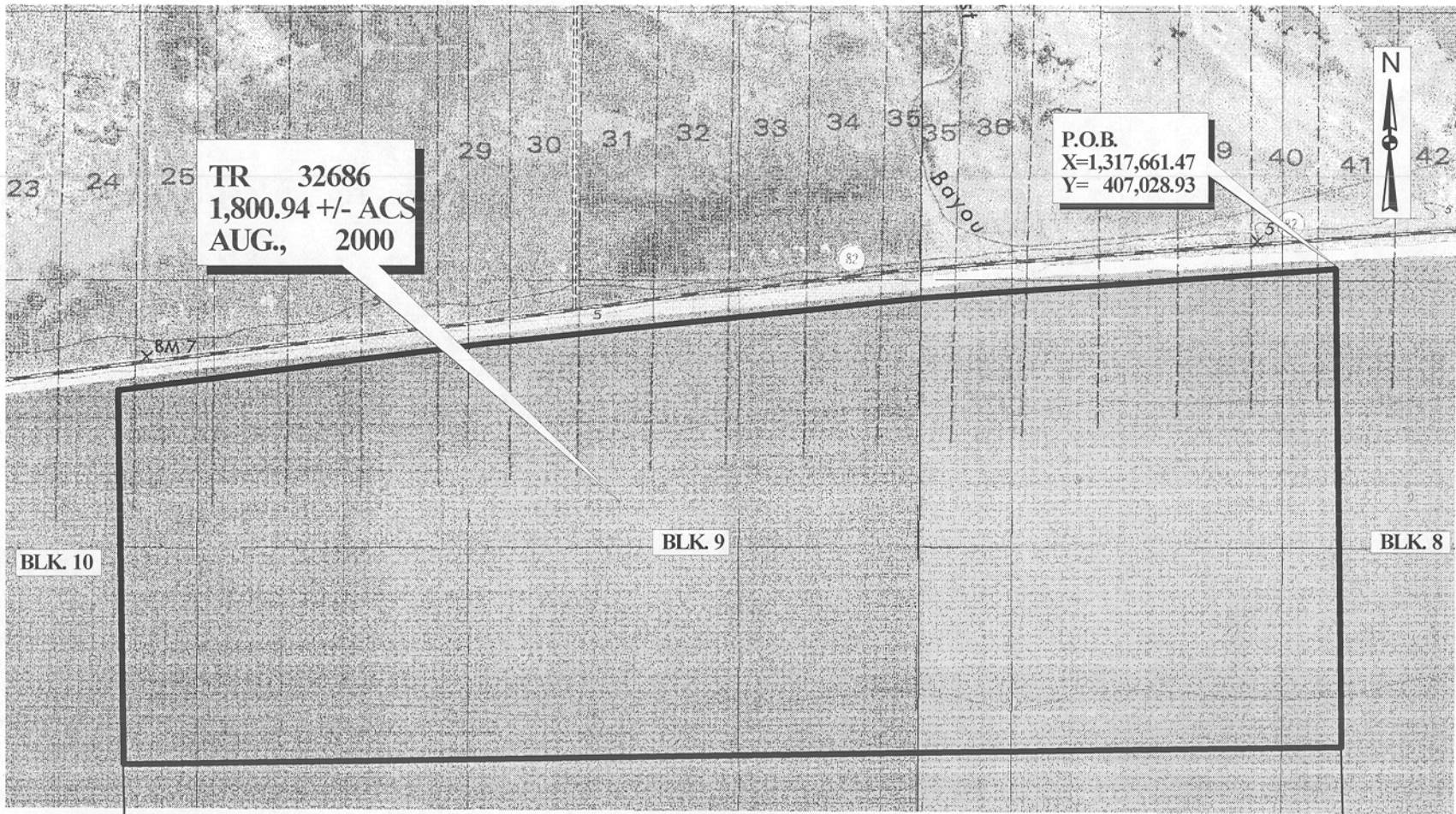
**TRACT 32686 - PORTION OF BLOCK 9, WEST CAMERON AREA, REVISED, Cameron Parish, Louisiana**

That portion of Block 9, West Cameron Area, Revised, Cameron Parish, Louisiana, belonging to the State of Louisiana and not under mineral lease on August 9, 2000, described as follows: Beginning at the Northeast corner of Block 9, West Cameron Area, Revised, having Coordinates of X = 1,317,661.47 and Y = 407,028.93; thence on the North line of said Block 9 the following courses: Southwesterly on a straight line to a point having Coordinates of X = 1,312,617 and Y = 406,742; Southwesterly on a straight line to a point having Coordinates of X = 1,307,312 and Y = 406,260 and Southwesterly on a straight line to the Northwest corner of said Block 9 having Coordinates of X = 1,302,903.42 and Y = 405,754.67; thence South 4,585.40 feet on the West line of said Block 9 to a point having Coordinates of X = 1,302,903.42 and Y = 401,169.27; thence East 14,758.05 feet to a point on the East line of said Block 9 having Coordinates of X = 1,317,661.47 and Y = 401,169.27; thence North 5,859.66 feet on the East line of said Block 9 to the point of beginning, containing approximately 1,800.94 acres, as shown outlined in red on a plat on file in the Office of Mineral Resources, Department of Natural Resources. All bearings, distances and coordinates are based on Louisiana Coordinate System of 1927 (South Zone).

NOTE: The State of Louisiana does hereby reserve, and this lease shall be subject to, the imprescriptible right of surface use in the nature of a servitude in favor of the Department of Natural Resources, including its Offices and Commissions, for the sole purpose of implementing, constructing, servicing and maintaining approved coastal zone management and/or restoration projects. Utilization of any and all rights derived under this lease by the mineral lessee, its agents, successors or assigns, shall not interfere with nor hinder the reasonable surface use by the Department of Natural Resources, its Offices or Commissions, as hereinabove reserved.

Applicant: Ric Bajon & Associates

Bidder	Cash Payment	Price / Acre	Rental	Oil	Gas	Other



**WEST CAMERON AREA, REVISED  
CAMERON PARISH**



OFFICIAL COPY  
OFFICE OF MINERAL RESOURCES  
DEPT. OF NATURAL RESOURCES  
DO NOT REMOVE

**TRACT 32687 - PORTION OF BLOCK 9, WEST CAMERON AREA, REVISED, Cameron Parish, Louisiana**

That portion of Block 9, West Cameron Area, Revised, Cameron Parish, Louisiana, belonging to the State of Louisiana and not under mineral lease on August 9, 2000, described as follows: Beginning at the Southeast corner of Block 9, West Cameron Area, Revised, having Coordinates of X = 1,317,661.47 and Y = 393,790.24; thence North 7,379.03 feet on the East line of said Block 9 to a point having Coordinates of X = 1,317,661.47 and Y = 401,169.27; thence West 14,758.05 feet to a point on the West line of said Block 9 having Coordinates of X = 1,302,903.42 and Y = 401,169.27; thence South 7,379.03 feet on the West line of said Block 9 to its Southwest corner having Coordinates of X = 1,302,903.42 and Y = 393,790.24; thence East 14,758.05 feet on the South line of said Block 9 to the point of beginning, containing approximately 2,500.00 acres, as shown outlined in red on a plat on file in the Office of Mineral Resources, Department of Natural Resources. All bearings, distances and coordinates are based on Louisiana Coordinate System of 1927 (South Zone).

NOTE: The State of Louisiana does hereby reserve, and this lease shall be subject to, the imprescriptible right of surface use in the nature of a servitude in favor of the Department of Natural Resources, including its Offices and Commissions, for the sole purpose of implementing, constructing, servicing and maintaining approved coastal zone management and/or restoration projects. Utilization of any and all rights derived under this lease by the mineral lessee, its agents, successors or assigns, shall not interfere with nor hinder the reasonable surface use by the Department of Natural Resources, its Offices or Commissions, as hereinabove reserved.

Applicant: Ric Bajon & Associates

Bidder	Cash Payment	Price / Acre	Rental	Oil	Gas	Other