

TRACT 32730 - PORTION OF BLOCK 24, MAIN PASS AREA, REVISED, Plaquemines Parish, Louisiana

All of the lands now or formerly constituting the beds and bottoms of all water bodies of every nature and description and all islands and other lands formed by accretion or reliction, except tax lands, belonging to the State of Louisiana and not under mineral lease on August 9, 2000, situated in Plaquemines Parish, Louisiana, and more particularly described as follows: Beginning at the Southwest corner of State Lease No. 16691 which lies on the South line of Block 24, Main Pass Area, Revised, having Coordinates of X = 2,599,950.00 and Y = 307,580.00; thence West approximately 6,138 feet to the Southwest corner of said Block 24 having a Coordinate of Y = 307,580.00; thence Northerly along the West line of said Block 24 approximately 6,356 feet to a point; thence Northeasterly along said West line approximately 1,755 feet to the most Western Southwest corner of State Lease No. 2410, as amended; thence along the boundary of said State Lease No. 2410 the following courses: Southeasterly, Northeasterly, Southeasterly, Northeasterly, Southeasterly and Northwesterly to the most Western Northwest corner of said State Lease No. 2410 which lies on the Western boundary of said Block 24; thence Northeasterly approximately 6,045 feet to the Northwest corner of said Block 24 having a Coordinate of Y = 322,330.00; thence East along the North line of said Block 24 approximately 833 feet to the Northwest corner of State Lease No. 16592 having Coordinates of X = 2,598,050.00 and Y = 322,330.00; thence along the boundaries of said State Lease No. 16592 the following courses: South 6,250.00 and East 600.00 feet to its Southeast corner, also being the Southwest corner of State Lease No. 16406; thence along the boundaries of said State Lease No. 16406 the following courses: South 54 degrees 01 minutes 39 seconds East 1,915.24 feet and East 1,150.00 feet to the Southeast corner of said State Lease No. 16406 having Coordinates of X = 2,601,350.00 and Y = 314,955.00; thence South 2,975.00 feet to a point on the North line of State Lease No. 16691 having Coordinates of X = 2,601,350.00 and Y = 311,980.00; thence West 1,400.00 feet along the North line of said State Lease No. 16691 to its Northwest corner having Coordinates of X = 2,599,950.00 and Y = 311,980.00; thence South 4,400.00 feet along the West line of said State Lease No. 16691 to the point of beginning, containing approximately 1,315 acres, as shown outlined in red on a plat on file in the Office of Mineral Resources, Department of Natural Resources. All bearings, distances and coordinates are based on Louisiana Coordinate System of 1927 (South Zone).

NOTE: The above tract is located in or near an oyster restricted area and all operations in such area must be conducted in strict conformity with the stipulations and/or regulations of the Louisiana Department of Wildlife and Fisheries.

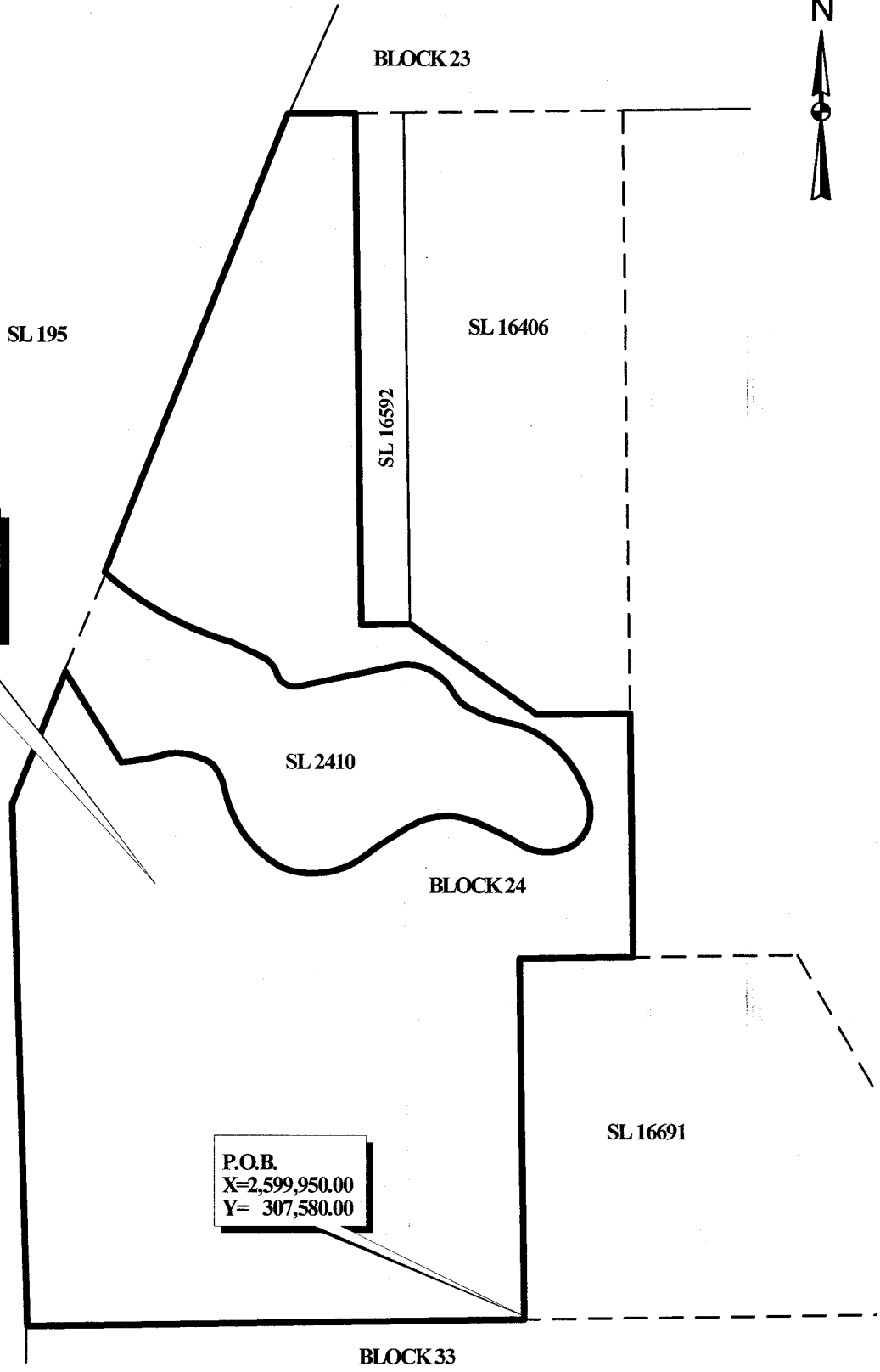
NOTE: The State of Louisiana does hereby reserve, and this lease shall be subject to, the imprescriptible right of surface use in the nature of a servitude in favor of the Department of Natural Resources, including its Offices and Commissions, for the sole purpose of implementing, constructing, servicing and maintaining approved coastal zone management and/or restoration projects. Utilization of any and all rights derived under this lease by the mineral lessee, its agents, successors or assigns, shall not interfere with nor hinder the reasonable surface use by the Department of Natural Resources, its Offices or Commissions, as hereinabove reserved.

Applicant: Crews Enterprises, Inc.

Bidder	Cash Payment	Price / Acre	Rental	Oil	Gas	Other

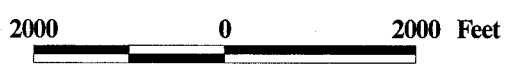


TR 32730
1,315 +/- ACS.
AUG., 2000



P.O.B.
X=2,599,950.00
Y= 307,580.00

MAIN PASS AREA, REVISED
PLAQUEMINES PARISH
OFFICIAL COPY
OFFICE OF MINERAL RESOURCES
DEPT. OF NATURAL RESOURCES
DO NOT REMOVE



TRACT 32731 - PORTION OF BLOCK 24, MAIN PASS AREA, REVISED, Plaquemines Parish, Louisiana

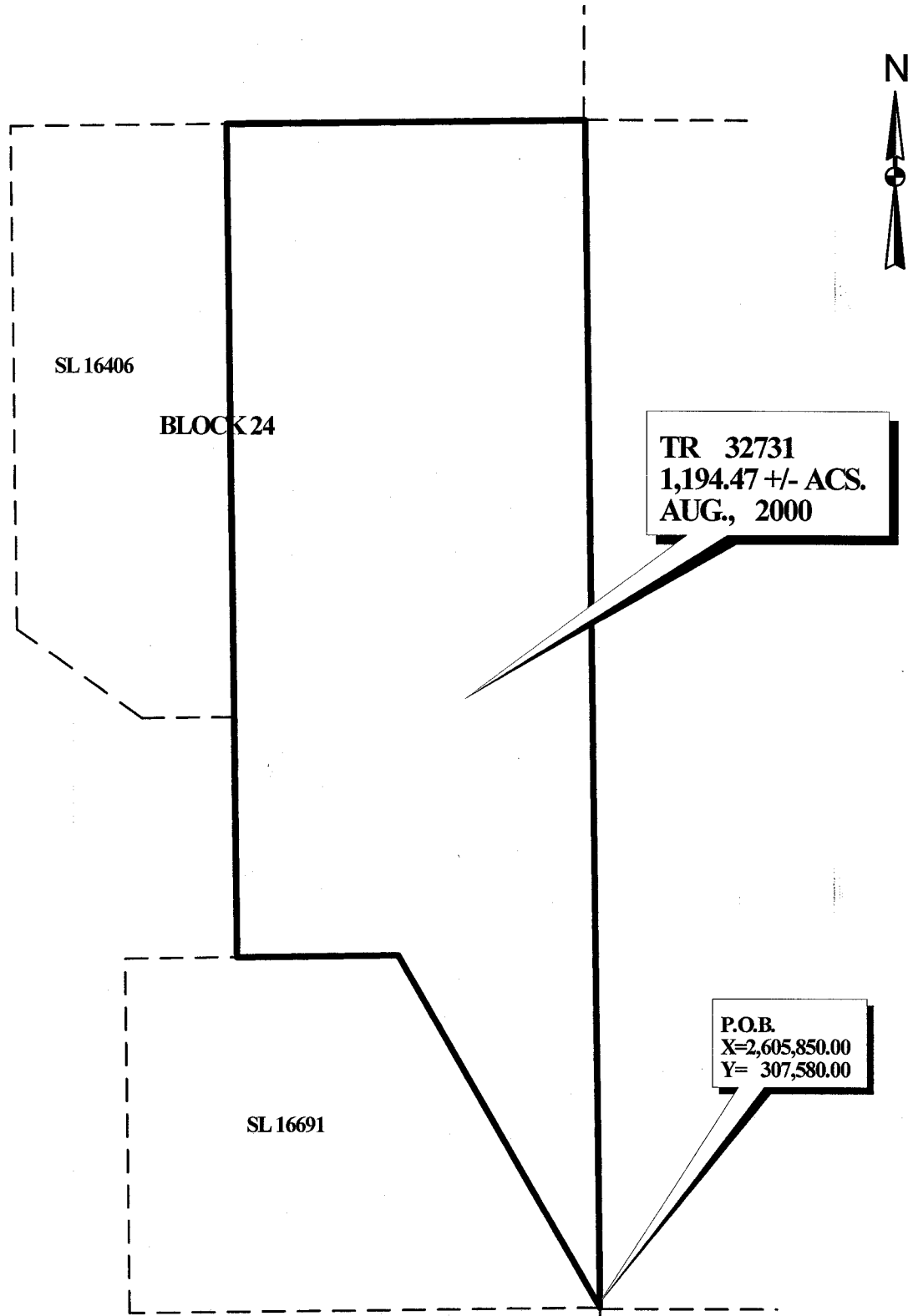
All of the lands now or formerly constituting the beds and bottoms of all water bodies of every nature and description and all islands and other lands formed by accretion or reliction, except tax lands, belonging to the State of Louisiana and not under mineral lease on August 9, 2000, situated in Plaquemines Parish, Louisiana, and more particularly described as follows: Beginning at the Southeast corner of Block 24, Main Pass Area, Revised, also being the Southeast corner of State Lease No. 16691 having Coordinates of X = 2,605,850.00 and Y = 307,580.00; thence North 29 degrees 24 minutes 26 seconds West 5,050.78 feet to the Northeast corner of said State Lease No. 16691 having Coordinates of X = 2,603,370.00 and Y = 311,980.00; thence West 2,020.00 feet along the North line of said State Lease No. 16691 to a point having Coordinates of X = 2,601,350.00 and Y = 311,980.00; thence North 2,975.00 feet to the Southeast corner of State Lease No. 16406 having Coordinates of X = 2,601,350.00 and Y = 314,955.00; thence North 7,375.00 feet along the East line of said State Lease No. 16406 to its Northeast corner which lies on the North line of said Block 24 having Coordinates of X = 2,601,350.00 and Y = 322,330.00; thence East 4,500.00 feet along said North line of said Block 24 to its Northeast corner having Coordinates of X = 2,605,850.00 and Y = 322,330.00; thence South 14,750.00 feet along the East line of said Block 24 to the point of beginning, containing approximately **1,194.47 acres**, as shown outlined in red on a plat on file in the Office of Mineral Resources, Department of Natural Resources. All bearings, distances and coordinates are based on Louisiana Coordinate System of 1927 (South Zone).

NOTE: The above tract is located in or near an oyster restricted area and all operations in such area must be conducted in strict conformity with the stipulations and/or regulations of the Louisiana Department of Wildlife and Fisheries.

NOTE: The State of Louisiana does hereby reserve, and this lease shall be subject to, the imprescriptible right of surface use in the nature of a servitude in favor of the Department of Natural Resources, including its Offices and Commissions, for the sole purpose of implementing, constructing, servicing and maintaining approved coastal zone management and/or restoration projects. Utilization of any and all rights derived under this lease by the mineral lessee, its agents, successors or assigns, shall not interfere with nor hinder the reasonable surface use by the Department of Natural Resources, its Offices or Commissions, as hereinabove reserved.

Applicant: Crews Enterprises, Inc.

Bidder	Cash Payment	Price / Acre	Rental	Oil	Gas	Other



**MAIN PASS AREA, REVISED
PLAQUEMINES PARISH**

OFFICIAL COPY
OFFICE OF MINERAL RESOURCES
DEPT. OF NATURAL RESOURCES
DO NOT REMOVE

TRACT 32732 - PORTION OF BLOCK 25, MAIN PASS AREA, REVISED, Plaquemines Parish, Louisiana

All of the lands now or formerly constituting the beds and bottoms of all water bodies of every nature and description and all islands and other lands formed by accretion or reliction, except tax lands, belonging to the State of Louisiana and not under mineral lease on August 9, 2000, situated in Plaquemines Parish, Louisiana, and more particularly described as follows: Beginning at the Southwest corner of Block 25, Main Pass Area, Revised, having Coordinates of X = 2,605,850.00 and Y = 307,580.00; thence North 14,750.00 feet along the West line of said Block 25 to its Northwest corner having Coordinates of X = 2,605,850.00 and Y = 322,330.00; thence East 2,200.00 feet along the North line of said Block 25 to the Northwest corner of State Lease No. 16432 having Coordinates of X = 2,608,050.00 and Y = 322,330.00; thence South 28 degrees 28 minutes 27 seconds East 4,379.91 feet along the West line of said State Lease No. 16432 to the Northeast corner of State Lease No. 16690 having Coordinates of X = 2,610,138.18 and Y = 318,479.92; thence along the boundaries of said State Lease No. 16690 the following courses: South 44 degrees 33 minutes 15 seconds West 2,775.55 feet, South 28 degrees 28 minutes 27 seconds East 1,760.00 feet and East 420.00 feet to the Northwest corner of State Lease No. 16692 having Coordinates of X = 2,609,450.00 and Y = 314,955.00; thence along the boundaries of said State Lease No. 16692 the following courses: South 3,500.00 feet, South 77 degrees 00 minutes 19 seconds East 2,668.33 feet and North 1,275.00 feet to the Southwest corner of State Lease No. 14124 having Coordinates of X = 2,612,050.00 and Y = 312,130.00; thence East 2,500.00 feet along the South line of said State Lease No. 14124 to its Southeast corner having Coordinates of X = 2,614,550.00 and Y = 312,130.00; thence South 4,550.00 feet to a point on the South line of said Block 25 having Coordinates of X = 2,614,550.00 and Y = 307,580.00; thence West 8,700.00 feet along said South line of said Block 25 to the point of beginning, containing approximately 1,619.29 acres, as shown outlined in red on a plat on file in the Office of Mineral Resources, Department of Natural Resources. All bearings, distances and coordinates are based on Louisiana Coordinate System of 1927 (South Zone).

NOTE: The above tract is located in or near an oyster restricted area and all operations in such area must be conducted in strict conformity with the stipulations and/or regulations of the Louisiana Department of Wildlife and Fisheries.

NOTE: The State of Louisiana does hereby reserve, and this lease shall be subject to, the imprescriptible right of surface use in the nature of a servitude in favor of the Department of Natural Resources, including its Offices and Commissions, for the sole purpose of implementing, constructing, servicing and maintaining approved coastal zone management and/or restoration projects. Utilization of any and all rights derived under this lease by the mineral lessee, its agents, successors or assigns, shall not interfere with nor hinder the reasonable surface use by the Department of Natural Resources, its Offices or Commissions, as hereinabove reserved.

Applicant: Crews Enterprises, Inc.

Bidder	Cash Payment	Price / Acre	Rental	Oil	Gas	Other



BLOCK 23

BLOCK 22

TR 32732
1,619.29 +/- ACS.
AUG., 2000

SL 16432

BLOCK 24

SL 16690

BLOCK 25

SL 14124

SL 16692

P.O.B.
X=2,605,850.00
Y= 307,580.00

BLOCK 33

BLOCK 32

MAIN PASS AREA, REVISED
PLAQUEMINES PARISH
OFFICIAL COPY
OFFICE OF MINERAL RESOURCES
DEPT. OF NATURAL RESOURCES
DO NOT REMOVE

2000 0 2000 Feet

TRACT 32733 - PORTION OF BLOCK 25, MAIN PASS AREA, REVISED, Plaquemines Parish, Louisiana

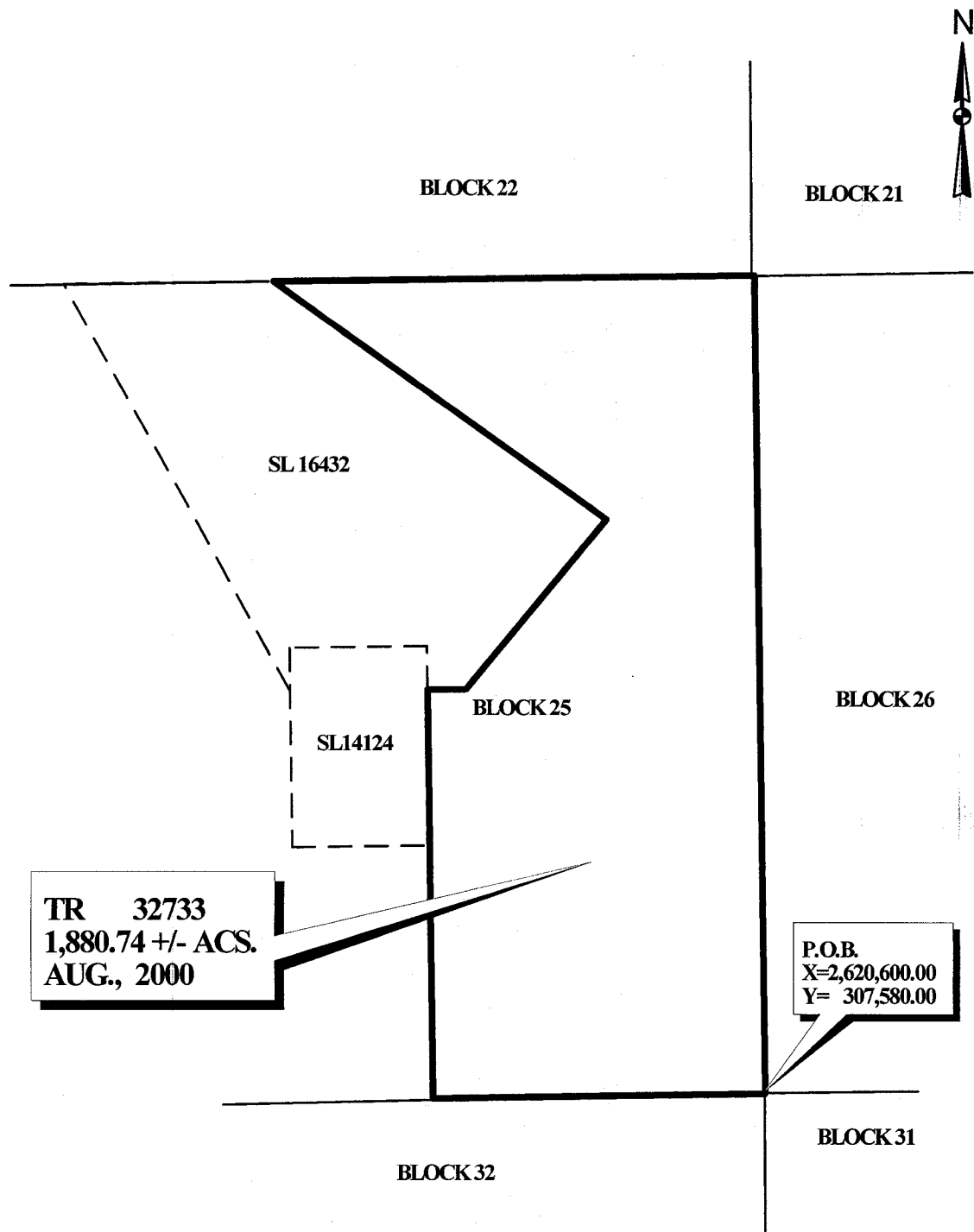
All of the lands now or formerly constituting the beds and bottoms of all water bodies of every nature and description and all islands and other lands formed by accretion or reliction, except tax lands, belonging to the State of Louisiana and not under mineral lease on August 9, 2000, situated in Plaquemines Parish, Louisiana, and more particularly described as follows: Beginning at the Southeast corner of Block 25, Main Pass Area, Revised, having Coordinates of X = 2,620,600.00 and Y = 307,580.00; thence West 6,050.00 feet along the South line of said Block 25 to a point having Coordinates of X = 2,614,550.00 and Y = 307,580.00; thence North 4,550.00 feet to the Southeast corner of State Lease No. 14124 having Coordinates of X = 2,614,550.00 and Y = 312,130.00; thence North 2,825.00 feet along the East line of said State Lease No. 14124 to a Southerly corner of State Lease No. 16432 having Coordinates of X = 2,614,550.00 and Y = 314,955.00; thence along the boundaries of said State Lease No. 16432 the following courses: East 700.00 feet, North 40 degrees 54 minutes 52 seconds East 3,969.89 feet and North 53 degrees 54 minutes 06 seconds West 7,425.67 feet to the Northeast corner of said State Lease No. 16432 which lies on the North line of said Block 25 having Coordinates of X = 2,611,850.00 and Y = 322,330.00; thence East 8,750.00 feet along the North line of said Block 25 to its Northeast corner having Coordinates of X = 2,620,600.00 and Y = 322,330.00; thence South 14,750.00 feet along the East line of said Block 25 to the point of beginning, containing approximately 1,880.74 acres, as shown outlined in red on a plat on file in the Office of Mineral Resources, Department of Natural Resources. All bearings, distances and coordinates are based on Louisiana Coordinate System of 1927 (South Zone).

NOTE: The above tract is located in or near an oyster restricted area and all operations in such area must be conducted in strict conformity with the stipulations and/or regulations of the Louisiana Department of Wildlife and Fisheries.

NOTE: The State of Louisiana does hereby reserve, and this lease shall be subject to, the imprescriptible right of surface use in the nature of a servitude in favor of the Department of Natural Resources, including its Offices and Commissions, for the sole purpose of implementing, constructing, servicing and maintaining approved coastal zone management and/or restoration projects. Utilization of any and all rights derived under this lease by the mineral lessee, its agents, successors or assigns, shall not interfere with nor hinder the reasonable surface use by the Department of Natural Resources, its Offices or Commissions, as hereinabove reserved.

Applicant: Crews Enterprises, Inc.

Bidder	Cash Payment	Price / Acre	Rental	Oil	Gas	Other



**MAIN PASS AREA, REVISED
PLAQUEMINES PARISH**

3000 0 3000 Feet

OFFICIAL COPY
OFFICE OF MINERAL RESOURCES
DEPT. OF NATURAL RESOURCES
DO NOT REMOVE