

NOT TO BE USED WITH A PORTION BID  
FOR INFORMATIONAL PURPOSES ONLY!

MAP NOT TO SCALE



TRACT 32726 - PORTION OF BLOCK 23, MAIN PASS AREA, REVISED, Plaquemines Parish, Louisiana

All of the lands now or formerly constituting the beds and bottoms of all water bodies of every nature and description and all islands and other lands formed by accretion or reliction, except tax lands, belonging to the State of Louisiana and not under mineral lease on August 9, 2000, situated in Plaquemines Parish, Louisiana, and more particularly described as follows: Beginning at the Northeast corner of Block 23, Main Pass Area, Revised, having Coordinates of X = 2,605,850.00 and Y = 337,080.00; thence South 9,150.00 feet along the East line of said Block 23 to the Northeast corner of State Lease No. 16686 having Coordinates of X = 2,605,850.00 and Y = 327,930.00; thence along the boundaries of said State Lease No. 16686 the following courses: West 390.00 feet, North 64 degrees 12 minutes 25 seconds West 2,987.66 feet and South 2,100.00 feet to the Southwest corner of said State Lease No. 16686 having Coordinates of X = 2,602,770.00 and Y = 327,130.00; thence South 05 degrees 42 minutes 38 seconds West 201.00 feet to a corner of State Lease No. 16591; thence along the boundaries of said State Lease No. 16591 the following courses: North 57 degrees 21 minutes 19 seconds West 3,800.33 feet and South 80 degrees West approximately 790 feet to the most Western Northwest corner of said State Lease No. 16591 which lies on the West line of said Block 23; thence Northerly approximately 3,360 feet to the most Southern corner of State Lease No. 16687; thence along the boundaries of said State Lease No. 16687 the following courses: North 41 degrees 35 minutes 41 seconds East approximately 3,310 feet, North 950.00 feet, West 600.00 feet and North 1,450.00 feet to the Northeast corner of said State Lease No. 16687 having Coordinates of X = 2,600,310.03 and Y = 337,080.00; thence East 5,539.97 feet along the North line of said Block 23 to the point of beginning, containing approximately 1,273 acres, as shown outlined in red on a plat on file in the Office of Mineral Resources, Department of Natural Resources. All bearings, distances and coordinates are based on Louisiana Coordinate System of 1927 (South Zone).

NOTE: The above tract is located in or near an oyster restricted area and all operations in such area must be conducted in strict conformity with the stipulations and/or regulations of the Louisiana Department of Wildlife and Fisheries.

NOTE: The State of Louisiana does hereby reserve, and this lease shall be subject to, the imprescriptible right of surface use in the nature of a servitude in favor of the Department of Natural Resources, including its Offices and Commissions, for the sole purpose of implementing, constructing, servicing and maintaining approved coastal zone management and/or restoration projects. Utilization of any and all rights derived under this lease by the mineral lessee, its agents, successors or assigns, shall not interfere with nor hinder the reasonable surface use by the Department of Natural Resources, its Offices or Commissions, as hereinabove reserved.

Applicant: Crews Enterprises, Inc.

Bidder	Cash Payment	Price / Acre	Rental	Oil	Gas	Other



BLOCK 14

BLOCK 15

P.O.B.  
X=2,605,850.00  
Y= 337,080.00

SL 16687

BLOCK 23

BLOCK 22

TR 32726  
1,273 +/- ACS.  
AUG., 2000

SL 195

SL 16591

SL16686

**MAIN PASS AREA, REVISED  
PLAQUEMINES PARISH**



OFFICIAL COPY  
OFFICE OF MINERAL RESOURCES  
DEPT. OF NATURAL RESOURCES  
DO NOT REMOVE

TRACT 32727 - PORTION OF BLOCK 23, MAIN PASS AREA, REVISED, Plaquemines Parish, Louisiana

All of the lands now or formerly constituting the beds and bottoms of all water bodies of every nature and description and all islands and other lands formed by accretion or reliction, except tax lands, belonging to the State of Louisiana and not under mineral lease on August 9, 2000, situated in Plaquemines Parish, Louisiana, and more particularly described as follows: Beginning at the Southeast corner of Block 23, Main Pass Area, Revised, having Coordinates of X = 2,605,850.00 and Y = 322,330.00; thence West approximately 8,630 feet to the Southwest corner of said Block 23 having a Coordinate of Y = 322,330.00; thence Northeasterly approximately 4,130 feet to a point; thence Northerly approximately 845 feet to the most Westerly Southwest corner of State Lease No. 16591; thence along the boundaries of said State Lease No. 16591 the following courses: South 78 degrees East approximately 2,196 feet, South 11 degrees 30 minutes 50 seconds East 2,755.45 feet, South 68 degrees 02 minutes 22 seconds East 1,671.26 feet, North 61 degrees 55 minutes 39 seconds East 1,700.00 feet and North 31 degrees 36 minutes 27 seconds West 3,434.48 feet to a point having Coordinates of X = 2,602,750.00 and Y = 326,930.00; thence North 05 degrees 42 minutes 38 seconds East 201.00 feet to the Southwest corner of State Lease No. 16686 having Coordinates of X = 2,602,770.00 and Y = 327,130.00; thence South 72 degrees 18 minutes 24 seconds East 3,232.93 feet to the Southeast corner of said State Lease No. 16686 which lies on the East line of said Block 23 having Coordinates of X = 2,605,850.00 and Y = 326,147.44; thence South 3,817.44 feet along said East line to the point of beginning, containing approximately 586 acres, as shown outlined in red on a plat on file in the Office of Mineral Resources, Department of Natural Resources. All bearings, distances and coordinates are based on Louisiana Coordinate System of 1927 (South Zone).

NOTE: The above tract is located in or near an oyster restricted area and all operations in such area must be conducted in strict conformity with the stipulations and/or regulations of the Louisiana Department of Wildlife and Fisheries.

NOTE: The State of Louisiana does hereby reserve, and this lease shall be subject to, the imprescriptible right of surface use in the nature of a servitude in favor of the Department of Natural Resources, including its Offices and Commissions, for the sole purpose of implementing, constructing, servicing and maintaining approved coastal zone management and/or restoration projects. Utilization of any and all rights derived under this lease by the mineral lessee, its agents, successors or assigns, shall not interfere with nor hinder the reasonable surface use by the Department of Natural Resources, its Offices or Commissions, as hereinabove reserved.

Applicant: Crews Enterprises, Inc.

Bidder	Cash Payment	Price / Acre	Rental	Oil	Gas	Other

TR 32727  
586 +/- ACS.  
AUG., 2000

SL 195

SL 16686

SL 16591

BLOCK 23

BLOCK 22

BLOCK 24

BLOCK 25

P.O.B.  
X=2,605,850.00  
Y= 322,330.00



**MAIN PASS AREA, REVISED  
PLAQUEMINES PARISH**



OFFICIAL COPY  
OFFICE OF MINERAL RESOURCES  
DEPT. OF NATURAL RESOURCES  
DO NOT REMOVE

**TRACT 32728 - PORTION OF BLOCK 22, MAIN PASS AREA, REVISED, Plaquemines Parish, Louisiana**

All of the lands now or formerly constituting the beds and bottoms of all water bodies of every nature and description and all islands and other lands formed by accretion or reliction, except tax lands, belonging to the State of Louisiana and not under mineral lease on August 9, 2000, situated in Plaquemines Parish, Louisiana, and more particularly described as follows: Beginning at the Northwest corner of Block 22, Main Pass Area, Revised, having Coordinates of X = 2,605,850.00 and Y = 337,080.00; thence East 3,575.00 feet along the North line of said Block 22 to the most Western Northwest corner of State Lease No. 16689 having Coordinates of X = 2,609,425.00 and Y = 337,080.00; thence along the boundary of said State Lease No. 16689 the following courses: South 55 degrees 13 minutes 20 seconds East 1,095.73 feet and South 4,773.75 feet to a point on the North line of State Lease No. 16430 having Coordinates of X = 2,610,325.00 and Y = 331,681.25; thence along the boundary of said State Lease No. 16430 the following courses: South 45 degrees 59 minutes 32 seconds West 4,032.00 feet and South 9,500.00 feet to the Northeast corner of State Lease No. 16688 having Coordinates of X = 2,607,425.00 and Y = 327,930.00; thence West 1,575.00 feet to the Northwest corner of said State Lease No. 16688 which lies on the West line of said Block 22 having Coordinates of X = 2,605,850.00 and Y = 327,930.00; thence North 9,150.00 feet along said West line to the point of beginning, containing approximately **777.05 acres**, as shown outlined in red on a plat on file in the Office of Mineral Resources, Department of Natural Resources. All bearings, distances and coordinates are based on Louisiana Coordinate System of 1927 (South Zone).

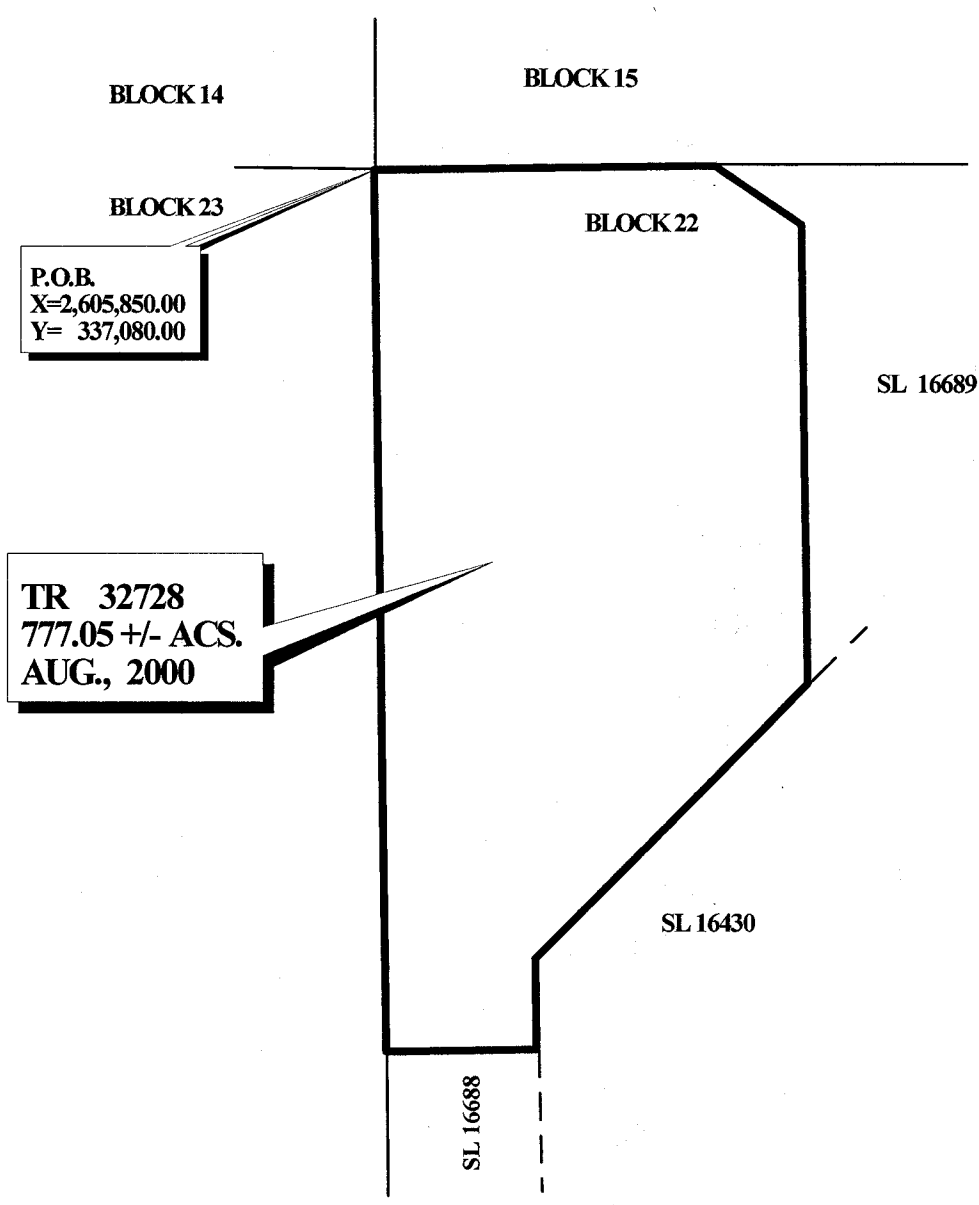
NOTE: The above tract is located in or near an oyster restricted area and all operations in such area must be conducted in strict conformity with the stipulations and/or regulations of the Louisiana Department of Wildlife and Fisheries.

NOTE: The State of Louisiana does hereby reserve, and this lease shall be subject to, the imprescriptible right of surface use in the nature of a servitude in favor of the Department of Natural Resources, including its Offices and Commissions, for the sole purpose of implementing, constructing, servicing and maintaining approved coastal zone management and/or restoration projects. Utilization of any and all rights derived under this lease by the mineral lessee, its agents, successors or assigns, shall not interfere with nor hinder the reasonable surface use by the Department of Natural Resources, its Offices or Commissions, as hereinabove reserved.

Applicant: Crews Enterprises, Inc.

Bidder	Cash Payment	Price / Acre	Rental	Oil	Gas	Other





**MAIN PASS AREA, REVISED  
PLAQUEMINES PARISH**



OFFICIAL COPY  
OFFICE OF MINERAL RESOURCES  
DEPT. OF NATURAL RESOURCES  
DO NOT REMOVE

**TRACT 32729 - PORTION OF BLOCK 22, MAIN PASS AREA, REVISED, Plaquemines Parish, Louisiana**

All of the lands now or formerly constituting the beds and bottoms of all water bodies of every nature and description and all islands and other lands formed by accretion or reliction, except tax lands, belonging to the State of Louisiana and not under mineral lease on August 9, 2000, situated in Plaquemines Parish, Louisiana, and more particularly described as follows: Beginning at the Southwest corner of Block 22, Main Pass Area, Revised, having Coordinates of X = 2,605,850.00 and Y = 322,330.00; thence North 3,817.44 feet along the West line of said Block 22 to the Southwest corner of State Lease No. 16688 having Coordinates of X = 2,605,850.00 and Y = 326,147.44; thence South 72 degrees 18 minutes 24 seconds East 1,653.20 feet to the Southeast corner of State Lease No. 16688 which lies on the West line of State Lease No. 16430 having Coordinates of X = 2,607,425.00 and Y = 325,645.00; thence South 3,315.00 feet to the Southwest corner of said State Lease No. 16430 which lies on the South line of said Block 22 having Coordinates of X = 2,607,425.00 and Y = 322,330.00; thence West 1,575.00 feet along said South line to the point of beginning, containing approximately **128.94 acres**, as shown outlined in red on a plat on file in the Office of Mineral Resources, Department of Natural Resources. All bearings, distances and coordinates are based on Louisiana Coordinate System of 1927 (South Zone).

NOTE: The above tract is located in or near an oyster restricted area and all operations in such area must be conducted in strict conformity with the stipulations and/or regulations of the Louisiana Department of Wildlife and Fisheries.

NOTE: The State of Louisiana does hereby reserve, and this lease shall be subject to, the imprescriptible right of surface use in the nature of a servitude in favor of the Department of Natural Resources, including its Offices and Commissions, for the sole purpose of implementing, constructing, servicing and maintaining approved coastal zone management and/or restoration projects. Utilization of any and all rights derived under this lease by the mineral lessee, its agents, successors or assigns, shall not interfere with nor hinder the reasonable surface use by the Department of Natural Resources, its Offices or Commissions, as hereinabove reserved.

Applicant: Crews Enterprises, Inc.

Bidder	Cash Payment	Price / Acre	Rental	Oil	Gas	Other



TR 32729  
128.94 +/- ACS.  
AUG., 2000

S.L. 16688

S.L. 16430

BLK. 23

BLK. 22

P.O.B.  
X= 2,605,850.00  
Y= 322,330.00

S.L. 16432

BLK. 24

**MAIN PASS AREA, REV.  
PLAQUEMINES PARISH**

OFFICIAL COPY  
OFFICE OF MINERAL RESOURCES  
DEPT. OF NATURAL RESOURCES  
DO NOT REMOVE

