

NOT TO BE USED WITH A PORTION BID  
FOR INFORMATIONAL PURPOSES ONLY!

MAP NOT TO SCALE

106

TRACT 32724 - PORTION OF BLOCK 14, MAIN PASS AREA, REVISED, Plaquemines Parish, Louisiana

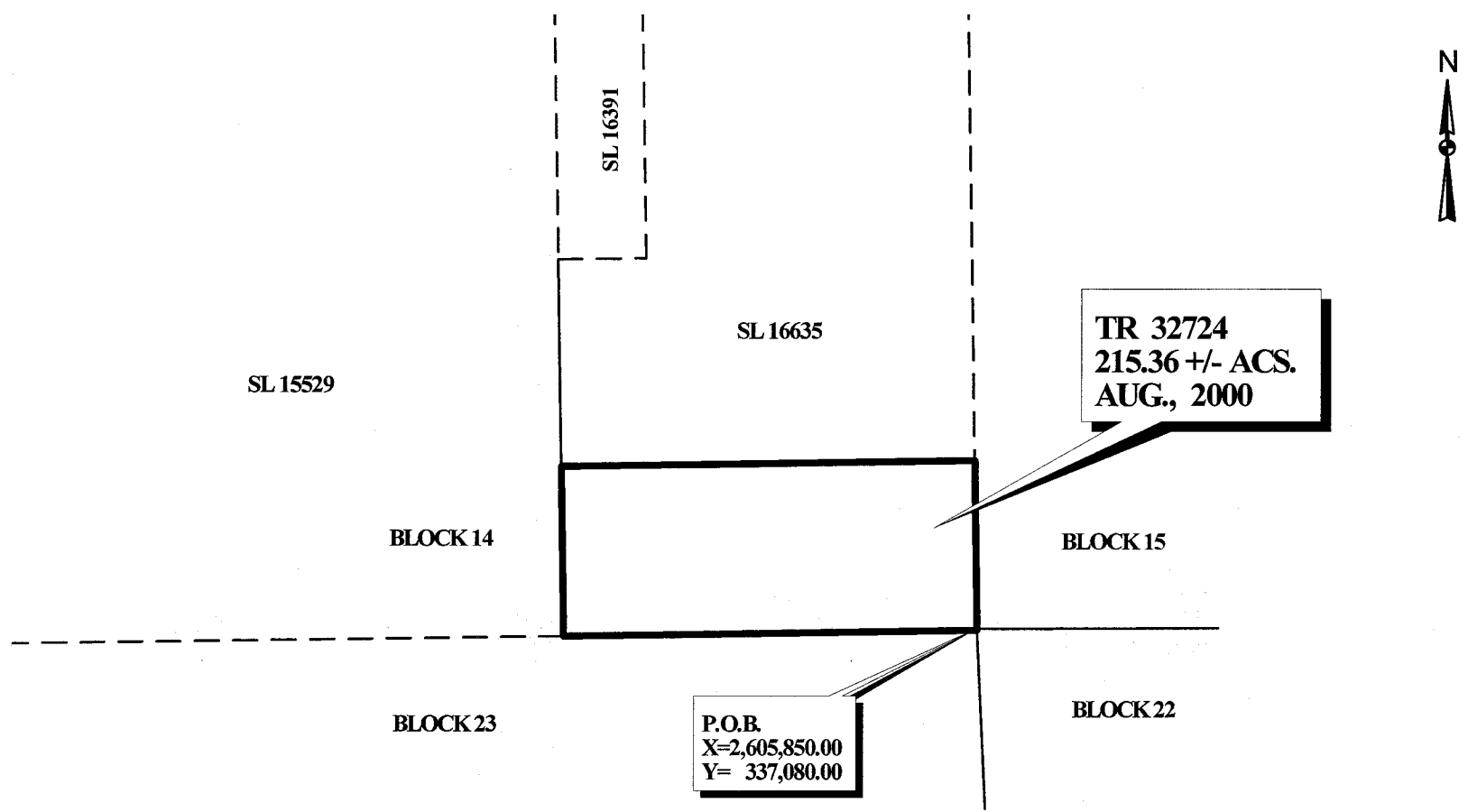
All of the lands now or formerly constituting the beds and bottoms of all water bodies of every nature and description and all islands and other lands formed by accretion or reliction, except tax lands, belonging to the State of Louisiana and not under mineral lease on August 9, 2000, situated in Plaquemines Parish, Louisiana, and more particularly described as follows: Beginning at the Southeast corner of Block 14, Main Pass Area, Revised, having Coordinates of X = 2,605,850.00 and Y = 337,080.00; thence West 4,750.00 feet along the South line of said Block 14 to the Southeast corner of State Lease No. 15529 having Coordinates of X = 2,601,100.00 and Y = 337,080.00; thence North 1,975.00 feet along the East line of said State Lease No. 15529 to the Southwest corner of State Lease No. 16635 having Coordinates of X = 2,601,100.00 and Y = 339,055.00; thence East 4,750.00 feet along the South line of said State Lease No. 16635 to its Southeast corner which lies on the East line of said Block 14 having Coordinates of X = 2,605,850.00 and Y = 339,055.00; thence South 1,975.00 feet along said East line of said Block 14 to the point of beginning, containing approximately 215.36 acres, as shown outlined in red on a plat on file in the Office of Mineral Resources, Department of Natural Resources. All bearings, distances and coordinates are based on Louisiana Coordinate System of 1927 (South Zone).

NOTE: The above tract is located in or near an oyster restricted area and all operations in such area must be conducted in strict conformity with the stipulations and/or regulations of the Louisiana Department of Wildlife and Fisheries.

NOTE: The State of Louisiana does hereby reserve, and this lease shall be subject to, the imprescriptible right of surface use in the nature of a servitude in favor of the Department of Natural Resources, including its Offices and Commissions, for the sole purpose of implementing, constructing, servicing and maintaining approved coastal zone management and/or restoration projects. Utilization of any and all rights derived under this lease by the mineral lessee, its agents, successors or assigns, shall not interfere with nor hinder the reasonable surface use by the Department of Natural Resources, its Offices or Commissions, as hereinabove reserved.

Applicant: Crews Enterprises, Inc.

Bidder	Cash Payment	Price / Acre	Rental	Oil	Gas	Other



**MAIN PASS AREA, REVISED  
PLAQUEMINES PARISH**



OFFICIAL COPY  
OFFICE OF MINERAL RESOURCES  
DEPT. OF NATURAL RESOURCES  
DO NOT REMOVE

**TRACT 32725 - PORTION OF BLOCK 15, MAIN PASS AREA, REVISED, Plaquemines Parish, Louisiana**

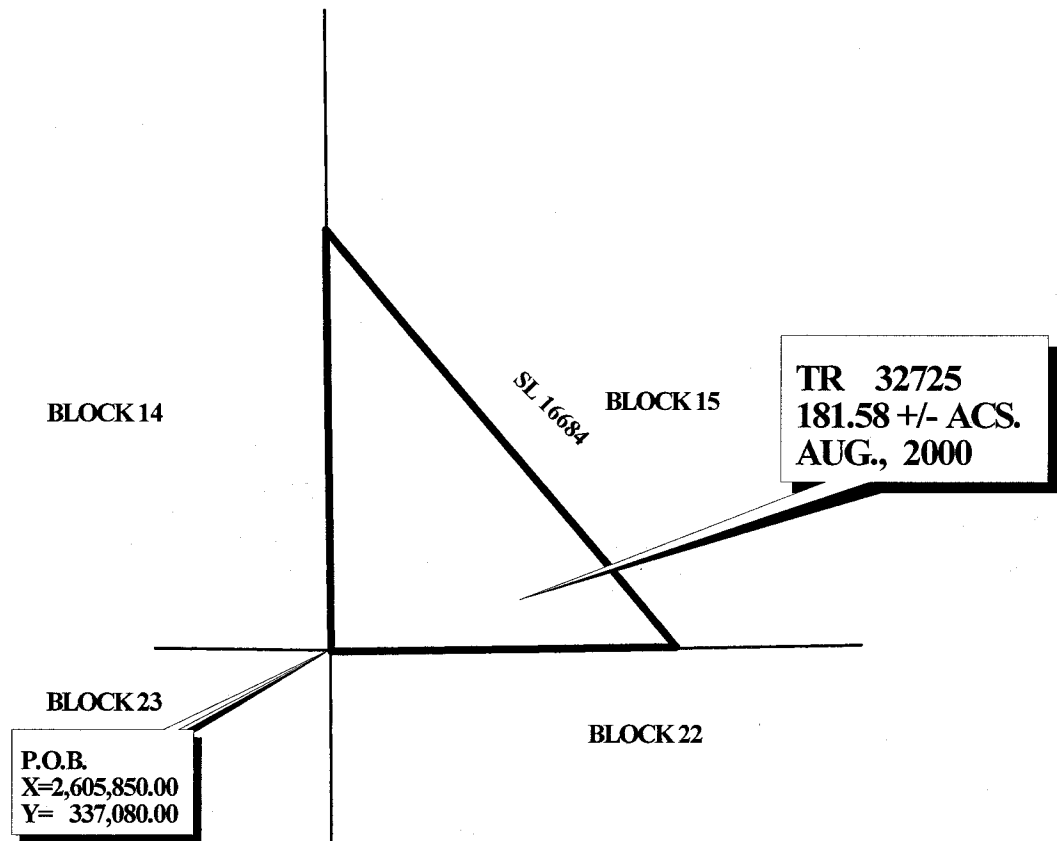
All of the lands now or formerly constituting the beds and bottoms of all water bodies of every nature and description and all islands and other lands formed by accretion or reliction, except tax lands, belonging to the State of Louisiana and not under mineral lease on August 9, 2000, situated in Plaquemines Parish, Louisiana, and more particularly described as follows: Beginning at the Southwest corner of Block 15, Main Pass Area, Revised, having Coordinates of X = 2,605,850.00 and Y = 337,080.00; thence North 4,425.00 feet to a Southwest corner of State Lease No. 16684 which lies on the West line of said Block 15 having Coordinates of X = 2,605,850.00 and Y = 341,505.00; thence South 38 degrees 56 minutes 06 seconds East 5,688.69 feet along a Western boundary of said State Lease No. 16684 to a point which lies on the South line of said Block 15 having Coordinates of X = 2,609,425.00 and Y = 337,080.00; thence West 3,575.00 feet along said South line to the point of beginning, containing approximately 181.58 acres, as shown outlined in red on a plat on file in the Office of Mineral Resources, Department of Natural Resources. All bearings, distances and coordinates are based on Louisiana Coordinate System of 1927 (South Zone).

NOTE: The above tract is located in or near an oyster restricted area and all operations in such area must be conducted in strict conformity with the stipulations and/or regulations of the Louisiana Department of Wildlife and Fisheries.

NOTE: The State of Louisiana does hereby reserve, and this lease shall be subject to, the imprescriptible right of surface use in the nature of a servitude in favor of the Department of Natural Resources, including its Offices and Commissions, for the sole purpose of implementing, constructing, servicing and maintaining approved coastal zone management and/or restoration projects. Utilization of any and all rights derived under this lease by the mineral lessee, its agents, successors or assigns, shall not interfere with nor hinder the reasonable surface use by the Department of Natural Resources, its Offices or Commissions, as hereinabove reserved.

Applicant: Crews Enterprises, Inc.

Bidder	Cash Payment	Price / Acre	Rental	Oil	Gas	Other



BLOCK 14

BLOCK 15

SL 16684

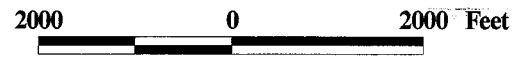
TR 32725  
181.58 +/- ACS.  
AUG., 2000

BLOCK 23

BLOCK 22

P.O.B.  
X=2,605,850.00  
Y= 337,080.00

**MAIN PASS AREA, REVISED  
PLAQUEMINES PARISH**



OFFICIAL COPY  
OFFICE OF MINERAL RESOURCES  
DEPT. OF NATURAL RESOURCES  
DO NOT REMOVE