

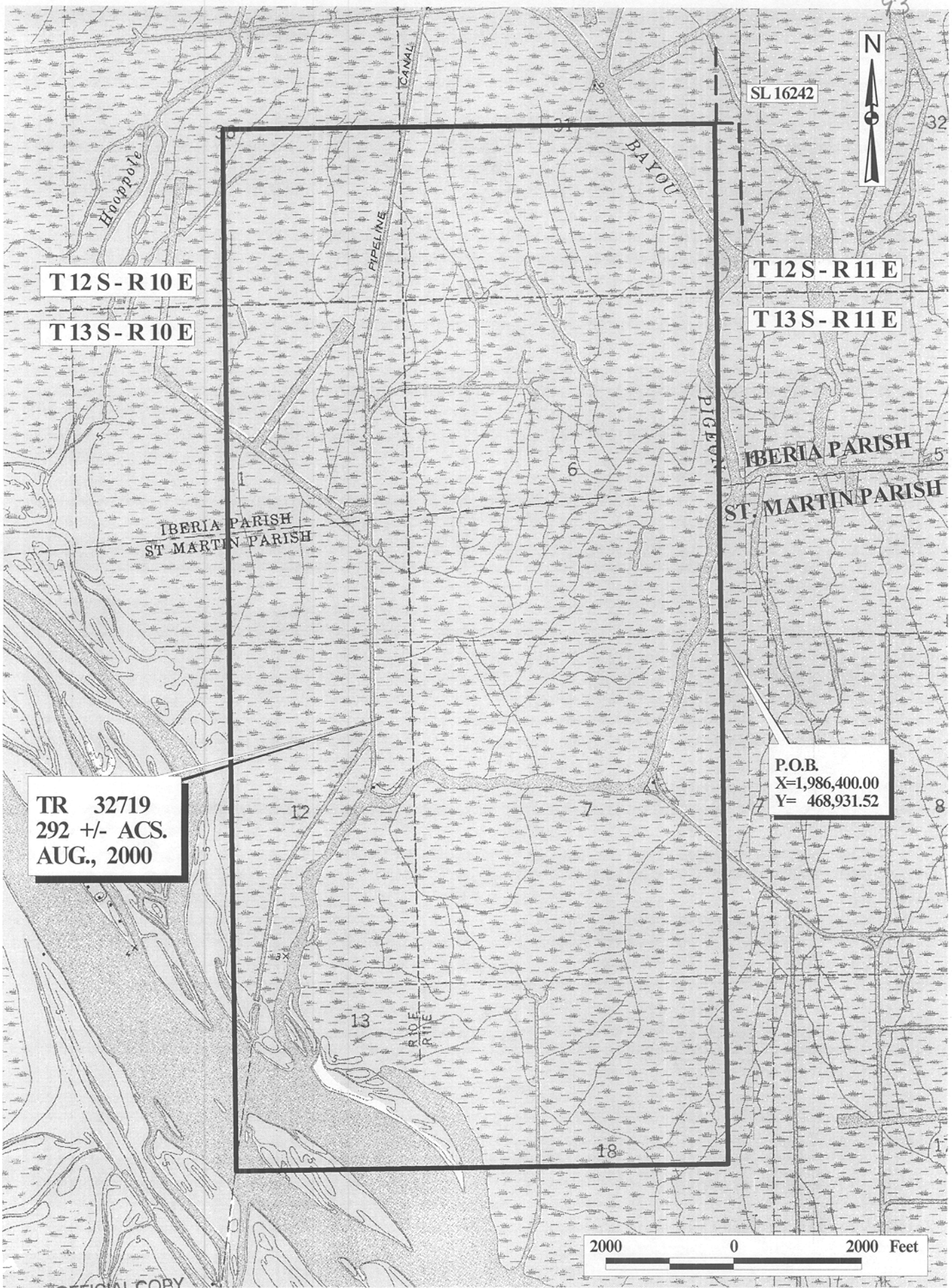
MAP NOT TO SCALE 16

TRACT 32719 - Iberia and St. Martin Parishes, Louisiana

All of the lands now or formerly constituting the beds and bottoms of all water bodies of every nature and description and all islands and other lands formed by accretion or reliction, except tax lands, owned by and not under mineral lease from the State of Louisiana on August 9, 2000, situated in Iberia and St. Martin Parishes, Louisiana, within the following described boundaries: Beginning at a point having Coordinates of X = 1,986,400.00 and Y = 468,931.52; thence South 8,131.52 feet to a point having Coordinates of X = 1,986,400.00 and Y = 460,800.00; thence West 7,700.00 feet to a point having Coordinates of X = 1,978,700.00 and Y = 460,800.00; thence North 16,100.00 feet to a point having Coordinates of X = 1,978,700.00 and Y = 476,900.00; thence East 7,700.00 feet to a point having Coordinates of X = 1,986,400.00 and Y = 476,900.00; thence South 7,968.48 feet to the point of beginning, containing approximately **292 acres**, as shown outlined in red on a plat on file in the Office of Mineral Resources, Department of Natural Resources. All bearings, distances and coordinates are based on Louisiana Coordinate System of 1927 (South Zone).

Applicant: Fortune Venture Partners

Bidder	Cash Payment	Price / Acre	Rental	Oil	Gas	Other



T12S-R10E

T13S-R10E

SL 16242

T12S-R11E

T13S-R11E

IBERIA PARISH
ST MARTIN PARISH

IBERIA PARISH
ST MARTIN PARISH

TR 32719
292 +/- ACS.
AUG., 2000

P.O.B.
X=1,986,400.00
Y= 468,931.52

2000 0 2000 Feet

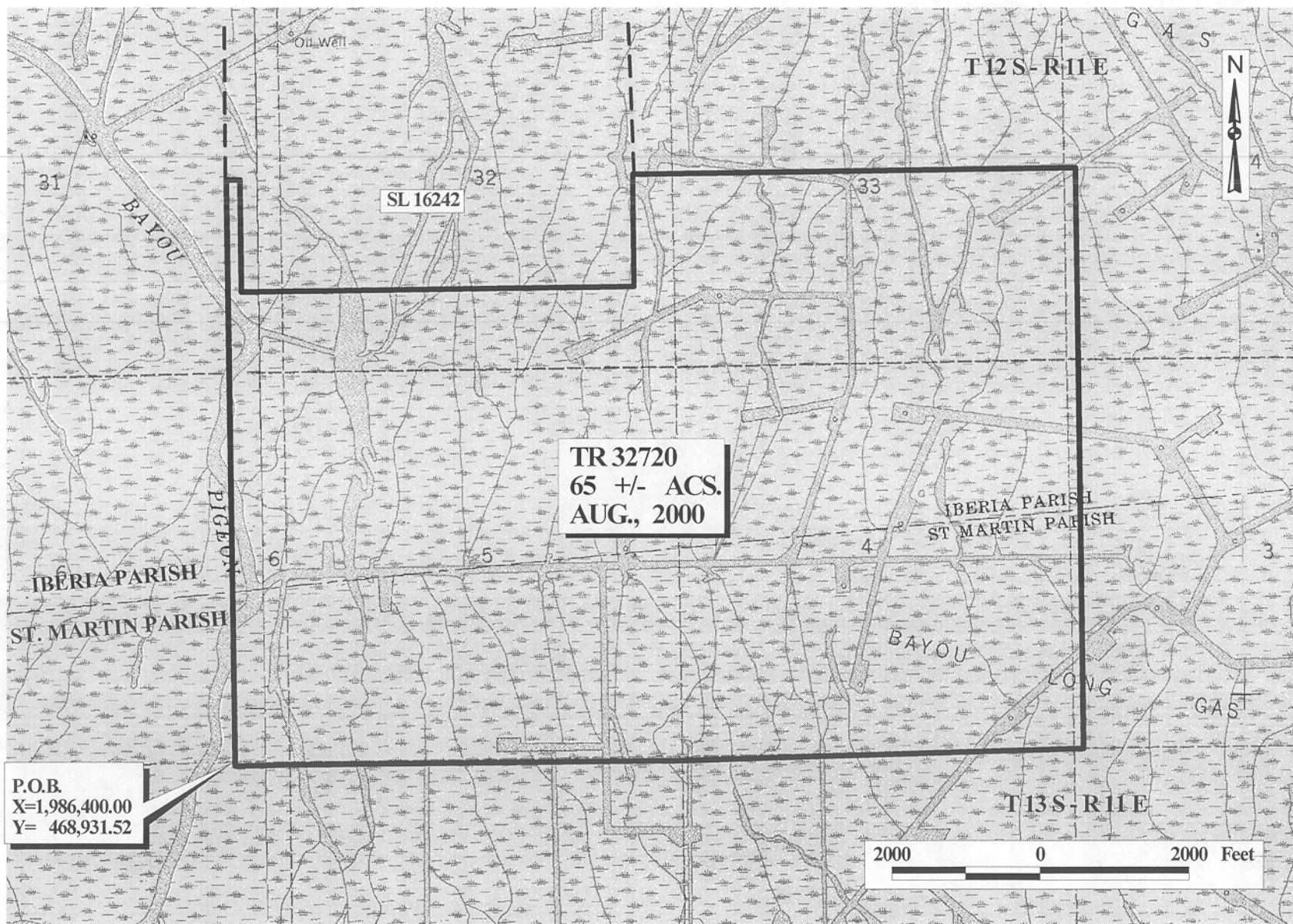
OFFICIAL COPY
OFFICE OF MINERAL RESOURCES
DEPT. OF NATURAL RESOURCES
DO NOT REMOVE

TRACT 32720 - Iberia and St. Martin Parishes, Louisiana

All of the lands now or formerly constituting the beds and bottoms of all water bodies of every nature and description and all islands and other lands formed by accretion or reliction, except tax lands, owned by and not under mineral lease from the State of Louisiana on August 9, 2000, situated in Iberia and St. Martin Parishes, Louisiana, within the following described boundaries: Beginning at a point having Coordinates of X = 1,986,400.00 and Y = 468,931.52; thence North 7,968.48 feet to the Northernmost Southwest corner of State Lease No. 16242 having Coordinates of X = 1,986,400.00 and Y = 476,900.00; thence on the boundary of said State Lease No. 16242 the following courses: East 177.91 feet, South 1,524.06 feet, East 5,280.00 feet and North 1,524.06 feet to a point on its East line having Coordinates of X = 1,991,857.91 and Y = 476,900.00; thence East 5,962.09 feet to a point having Coordinates of X = 1,997,820.00 and Y = 476,900.00; thence South 7,900.00 feet to a point having Coordinates of X = 1,997,820.00 and Y = 469,000.00; thence South 89 degrees 07 minutes 49 seconds West 5,455.28 feet to a point having Coordinates of X = 1,992,365.35 and Y = 468,917.20; thence North 89 degrees 47 minutes 37 seconds West 5,291.78 feet to a point having Coordinates of X = 1,987,073.60 and Y = 468,936.27; thence South 89 degrees 35 minutes 46 seconds West 673.62 feet to the point of beginning, containing approximately **65 acres**, as shown outlined in red on a plat on file in the Office of Mineral Resources, Department of Natural Resources. All bearings, distances and coordinates are based on Louisiana Coordinate System of 1927 (South Zone).

Applicant: Fortune Venture Partners

Bidder	Cash Payment	Price / Acre	Rental	Oil	Gas	Other



TR 32720
65 +/- ACS.
AUG., 2000

P.O.B.
X=1,986,400.00
Y= 468,931.52

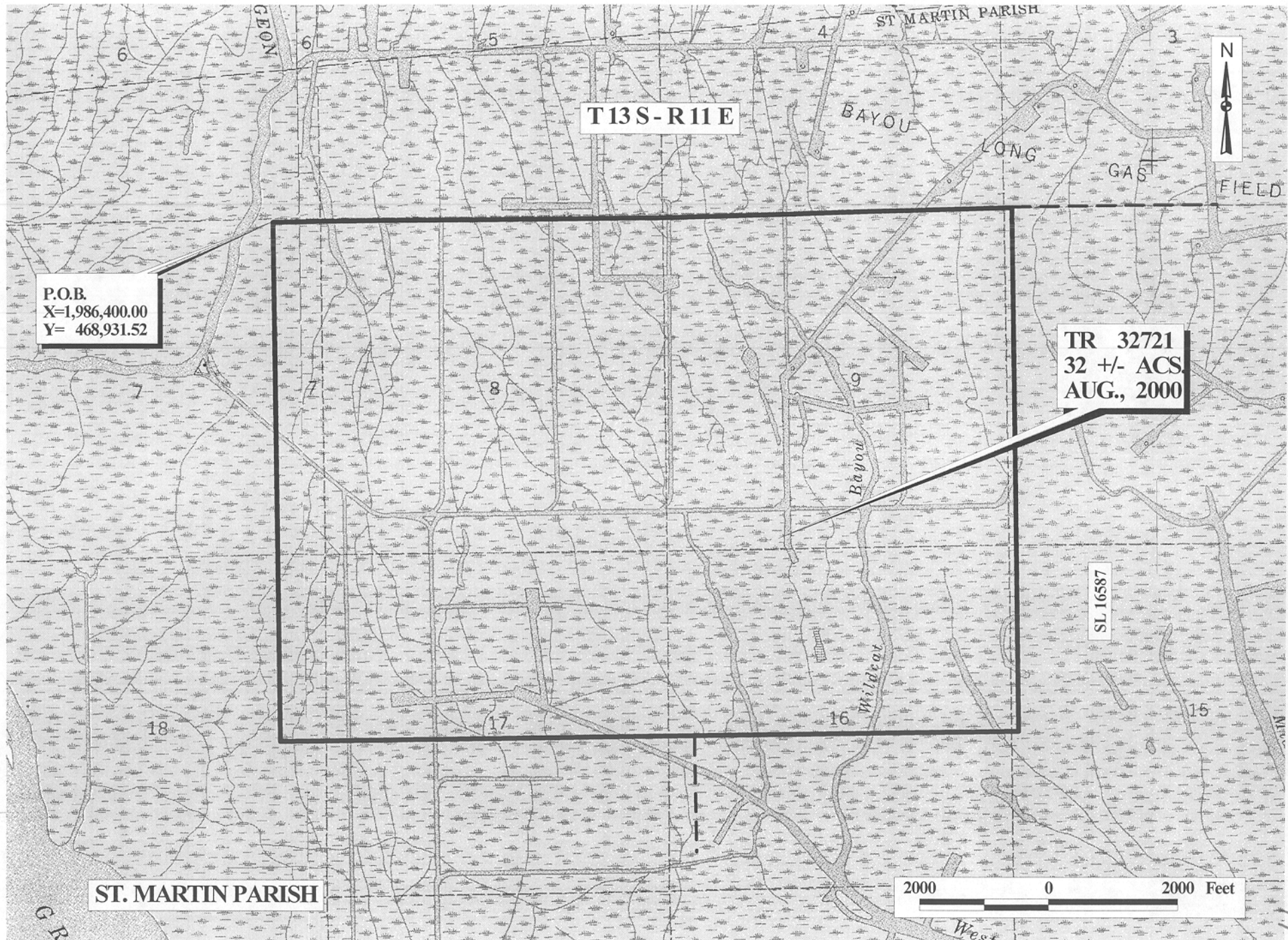
OFFICIAL COPY
 OFFICE OF MINERAL RESOURCES
 DEPT. OF NATURAL RESOURCES
 DO NOT REMOVE

TRACT 32721 - St. Martin Parish, Louisiana

All of the lands now or formerly constituting the beds and bottoms of all water bodies of every nature and description and all islands and other lands formed by accretion or reliction, except tax lands, owned by and not under mineral lease from the State of Louisiana on August 9, 2000, situated in St. Martin Parish, Louisiana, within the following described boundaries: Beginning at a point having Coordinates of X = 1,986,400.00 and Y = 468,931.52; thence North 89 degrees 35 minutes 46 seconds East 673.62 feet to a point having Coordinates of X = 1,987,073.60 and Y = 468,936.27; thence South 89 degrees 47 minutes 37 seconds East 5,291.78 feet to a point having Coordinates of X = 1,992,365.35 and Y = 468,917.20; thence North 89 degrees 07 minutes 49 seconds East 5,455.28 feet to the Northernmost Northwest corner of State Lease No. 16587 having Coordinates of X = 1,997,820.00 and Y = 469,000.00; thence on the boundary of said State Lease No. 16587 the following courses: South 8,200.00 feet and West 5,500.00 feet to its Southernmost Northwest corner having Coordinates of X = 1,992,320.00 and Y = 460,800.00; thence West 5,920.00 feet to a point having Coordinates of X = 1,986,400.00 and Y = 460,800.00; thence North 8,131.52 feet to the point of beginning, containing approximately 32 acres, as shown outlined in red on a plat on file in the Office of Mineral Resources, Department of Natural Resources. All bearings, distances and coordinates are based on Louisiana Coordinate System of 1927 (South Zone).

Applicant: Fortune Venture Partners

Bidder	Cash Payment	Price / Acre	Rental	Oil	Gas	Other



T13S-R11E

P.O.B.
X=1,986,400.00
Y= 468,931.52

TR 32721
32 +/- ACS.
AUG., 2000

SL 16587

ST. MARTIN PARISH

2000 0 2000 Feet

OFFICIAL COPY
OFFICE OF MINERAL RESOURCES
DEPT. OF NATURAL RESOURCES
DO NOT REMOVE