

NOT TO BE USED WITH A PORTION BID
FOR INFORMATIONAL PURPOSES ONLY!

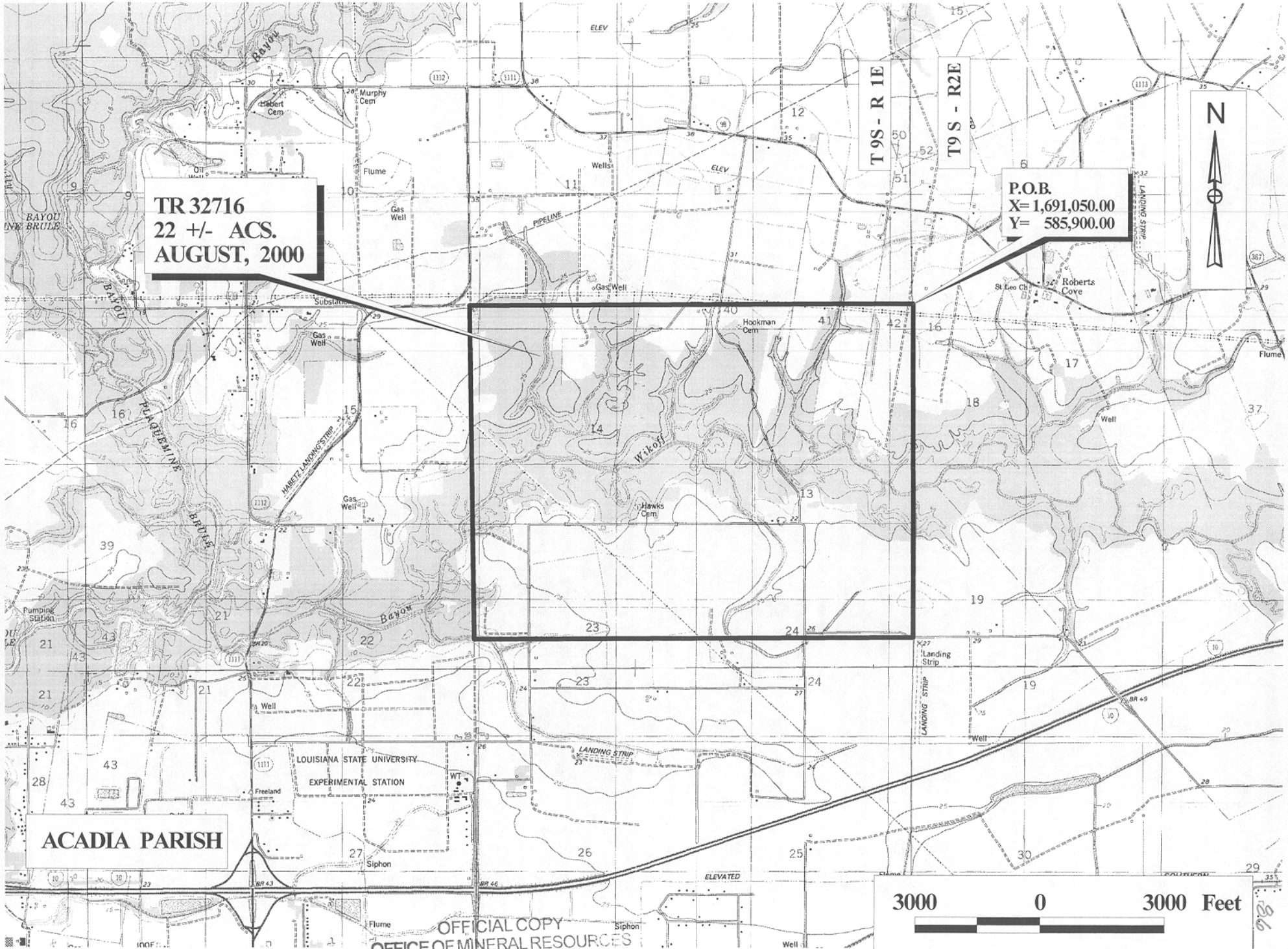
MAP NOT TO SCALE

TRACT 32716 - Acadia Parish, Louisiana

All of the lands now or formerly constituting the beds and bottoms of all water bodies of every nature and description and all islands and other lands formed by accretion or reliction, except tax lands, owned by and not under mineral lease from the State of Louisiana on August 9, 2000, situated in Acadia Parish, Louisiana, within the following described boundaries: Beginning at a point having Coordinates of X = 1,691,050.00 and Y = 585,900.00; thence South 00 degrees 42 minutes 26 seconds East 8,100.62 feet to a point having Coordinates of X = 1,690,950.00 and Y = 577,800.00; thence North 89 degrees 27 minutes 21 seconds West 10,530.48 feet to a point having Coordinates of X = 1,680,420.00 and Y = 577,900.00; thence North 8,100.00 feet to a point having Coordinates of X = 1,680,420.00 and Y = 586,000.00; thence South 89 degrees 27 minutes 40 seconds East 10,630.47 feet to the point of beginning, containing approximately 22 acres, as shown outlined in red on a plat on file in the Office of Mineral Resources, Department of Natural Resources. All bearings, distances and coordinates are based on Louisiana Coordinate System of 1927 (South Zone).

Applicant: Mulder, Ltd.

Bidder	Cash Payment	Price / Acre	Rental	Oil	Gas	Other



TR 32716
22 +/- ACS.
AUGUST, 2000

P.O.B.
X= 1,691,050.00
Y= 585,900.00

ACADIA PARISH

OFFICIAL COPY
OFFICE OF MINERAL RESOURCES
DEPT. OF NATURAL RESOURCES
DO NOT REMOVE

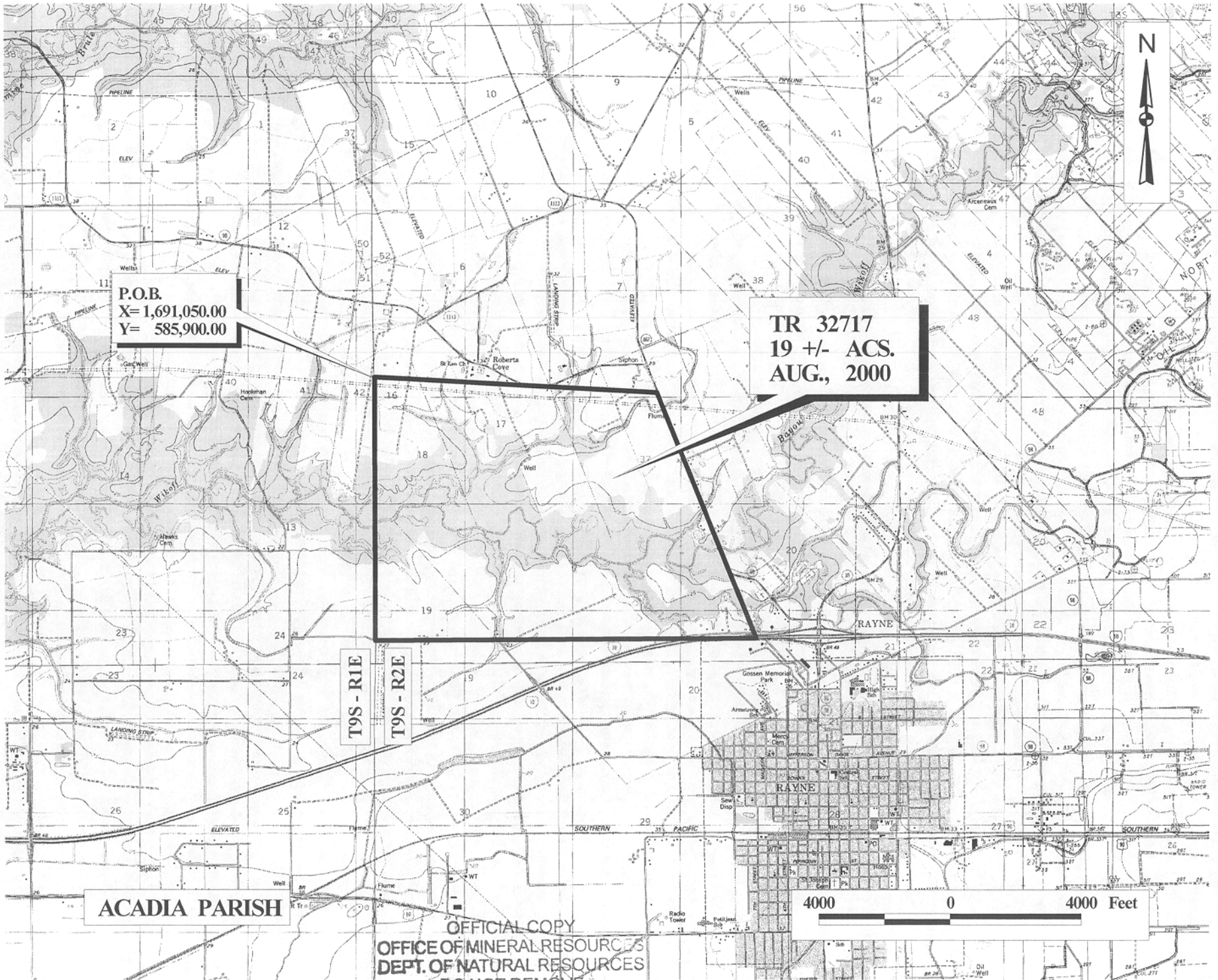


TRACT 32717 - Acadia Parish, Louisiana

All of the lands now or formerly constituting the beds and bottoms of all water bodies of every nature and description and all islands and other lands formed by accretion or reliction, except tax lands, owned by and not under mineral lease from the State of Louisiana on August 9, 2000, situated in Acadia Parish, Louisiana, within the following described boundaries: Beginning at a having Coordinates of X = 1,691,050.00 and Y = 585,900.00; thence South 85 degrees 59 minutes 09 seconds East 8,571.13 feet to a point having Coordinates of X = 1,699,600.10 and Y = 585,299.99; thence South 20 degrees 53 minutes 07 seconds West 8,134.45 feet to a point having Coordinates of X = 1,702,500.00 and Y = 577,700.00; thence North 89 degrees 30 minutes 14 seconds West 11,550.43 feet to a point having Coordinates of X = 1,690,950.00 and Y = 577,800.00; thence North 00 degrees 42 minutes 26 seconds East 8,100.62 feet to the point of beginning, containing approximately 19 acres, as shown outlined in red on a plat on file in the Office of Mineral Resources, Department of Natural Resources. All bearings, distances and coordinates are based on Louisiana Coordinate System of 1927 (South Zone).

Applicant: Mulder, Ltd.

Bidder	Cash Payment	Price / Acre	Rental	Oil	Gas	Other



P.O.B.
X= 1,691,050.00
Y= 585,900.00

TR 32717
19 +/- ACS.
AUG., 2000

T9S - R1E

T9S - R2E

ACADIA PARISH

OFFICIAL COPY
OFFICE OF MINERAL RESOURCES
DEPT. OF NATURAL RESOURCES
DO NOT REMOVE

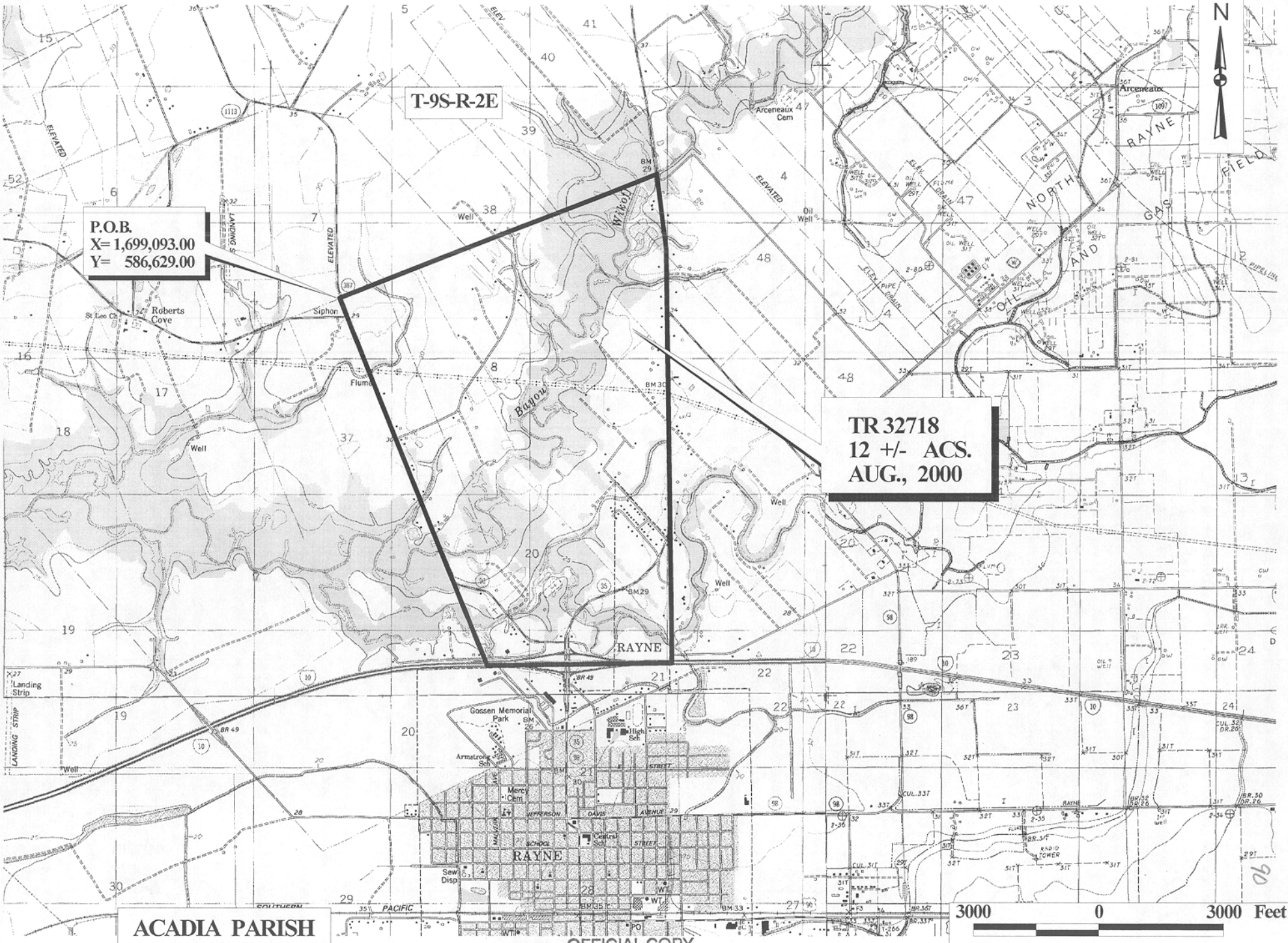
4000 0 4000 Feet

TRACT 32718 - Acadia Parish, Louisiana

All of the lands now or formerly constituting the beds and bottoms of all water bodies of every nature and description and all islands and other lands formed by accretion or reliction, except tax lands, owned by and not under mineral lease from the State of Louisiana on August 9, 2000, situated in Acadia Parish, Louisiana, within the following described boundaries: Beginning at a point having Coordinates of X = 1,699,093.00 and Y = 586,629.00; thence North 69 degrees 19 minutes 22 seconds East 8,130.75 feet to a point having Coordinates of X = 1,706,700.00 and Y = 589,500.00; thence South 06 degrees 20 minutes 25 seconds East 1,811.08 feet to a point having Coordinates of X = 1,706,900.00 and Y = 587,700.00; thence South 10,000.00 feet to a point having Coordinates of X = 1,706,900.00 and Y = 577,700.00; thence West 4,400.00 feet to a point having Coordinates of X = 1,702,500.00 and Y = 577,700.00; thence North 20 degrees 53 minutes 07 seconds West 9,556.92 feet to the point of beginning, containing approximately 12 acres, as shown outlined in red on a plat on file in the Office of Mineral Resources, Department of Natural Resources. All bearings, distances and coordinates are based on Louisiana Coordinate System of 1927 (South Zone).

Applicant: Mulder, Ltd.

Bidder	Cash Payment	Price / Acre	Rental	Oil	Gas	Other

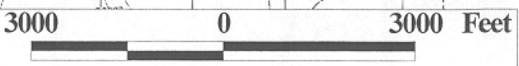


T-9S-R-2E

P.O.B.
 X= 1,699,093.00
 Y= 586,629.00

TR 32718
 12 +/- ACS.
 AUG., 2000

ACADIA PARISH



OFFICIAL COPY
 OFFICE OF MINERAL RESOURCES
 DEPT. OF NATURAL RESOURCES
 DO NOT REMOVE