

TR 32714

F & A Map Services  
Division of P

JEFFERSON DAVIS PARISH

NOT TO BE USED WITH A PORTION BID  
FOR INFORMATIONAL PURPOSES ONLY!

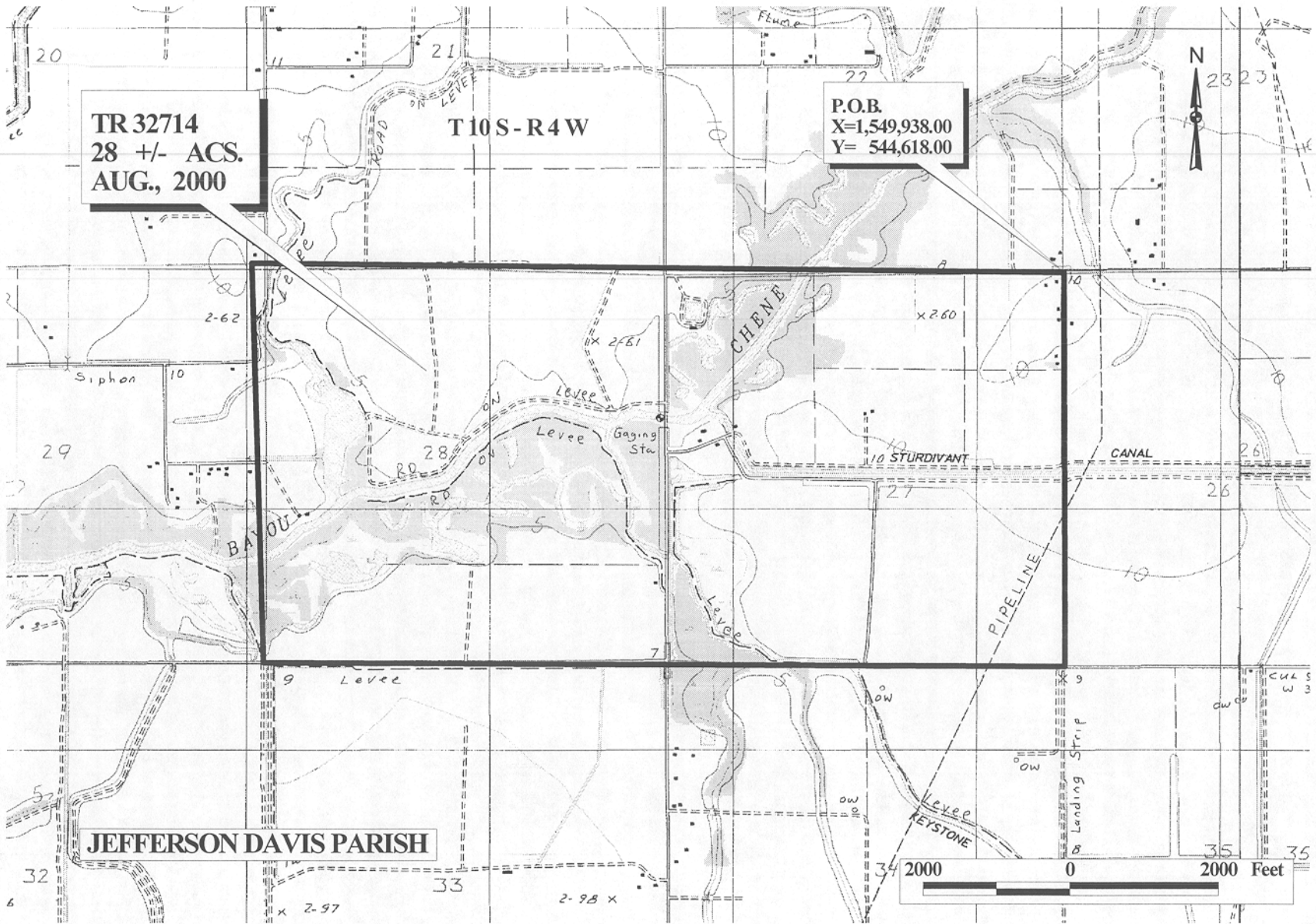
MAP NOT TO SCALE

**TRACT 32714 - Jefferson Davis Parish, Louisiana**

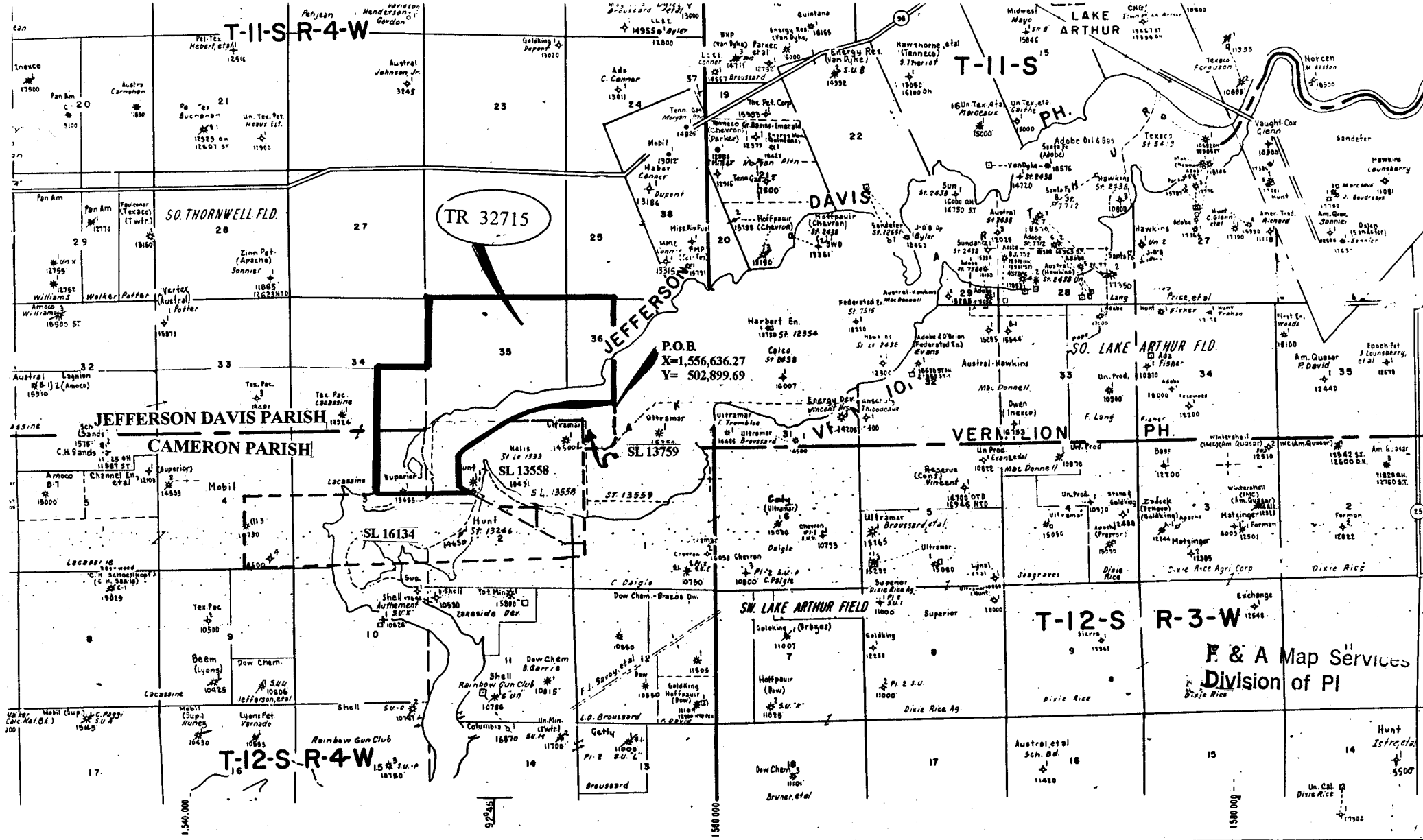
All of the lands now or formerly constituting the beds and bottoms of all water bodies of every nature and description and all islands and other lands formed by accretion or reliction, except tax lands, owned by and not under mineral lease from the State of Louisiana on August 9, 2000, situated in Jefferson Davis Parish, Louisiana, within the following described boundaries: Beginning at a point having Coordinates of X = 1,549,938.00 and Y = 544,618.00; thence South 00 degrees 36 minutes 27 seconds West 5,375.30 feet to a point; thence North 88 degrees 52 minutes 44 seconds West 10,822.57 feet to a point having Coordinates of X = 1,539,060.50 and Y = 539,454.76; thence North 00 degrees 47 minutes 18 seconds West 5,451.52 feet to a point; thence South 88 degrees 29 minutes 42 seconds East 10,956.28 feet to the point of beginning, containing approximately 28 acres, as shown outlined in red on a plat on file in the Office of Mineral Resources, Department of Natural Resources. All bearings, distances and coordinates are based on Louisiana Coordinate System of 1927 (South Zone).

Applicant: Louisiana Oil and Gas, Inc.

Bidder	Cash Payment	Price / Acre	Rental	Oil	Gas	Other



OFFICIAL COPY  
OFFICE OF MINERAL RESOURCES  
DEPT. OF NATURAL RESOURCES  
DO NOT REMOVE



TR 32715

P.O.B.  
X=1,556,636.27  
Y= 502,899.69

NOT TO BE USED WITH A PORTION BID  
FOR INFORMATIONAL PURPOSES ONLY!

MAP NOT TO SCALE

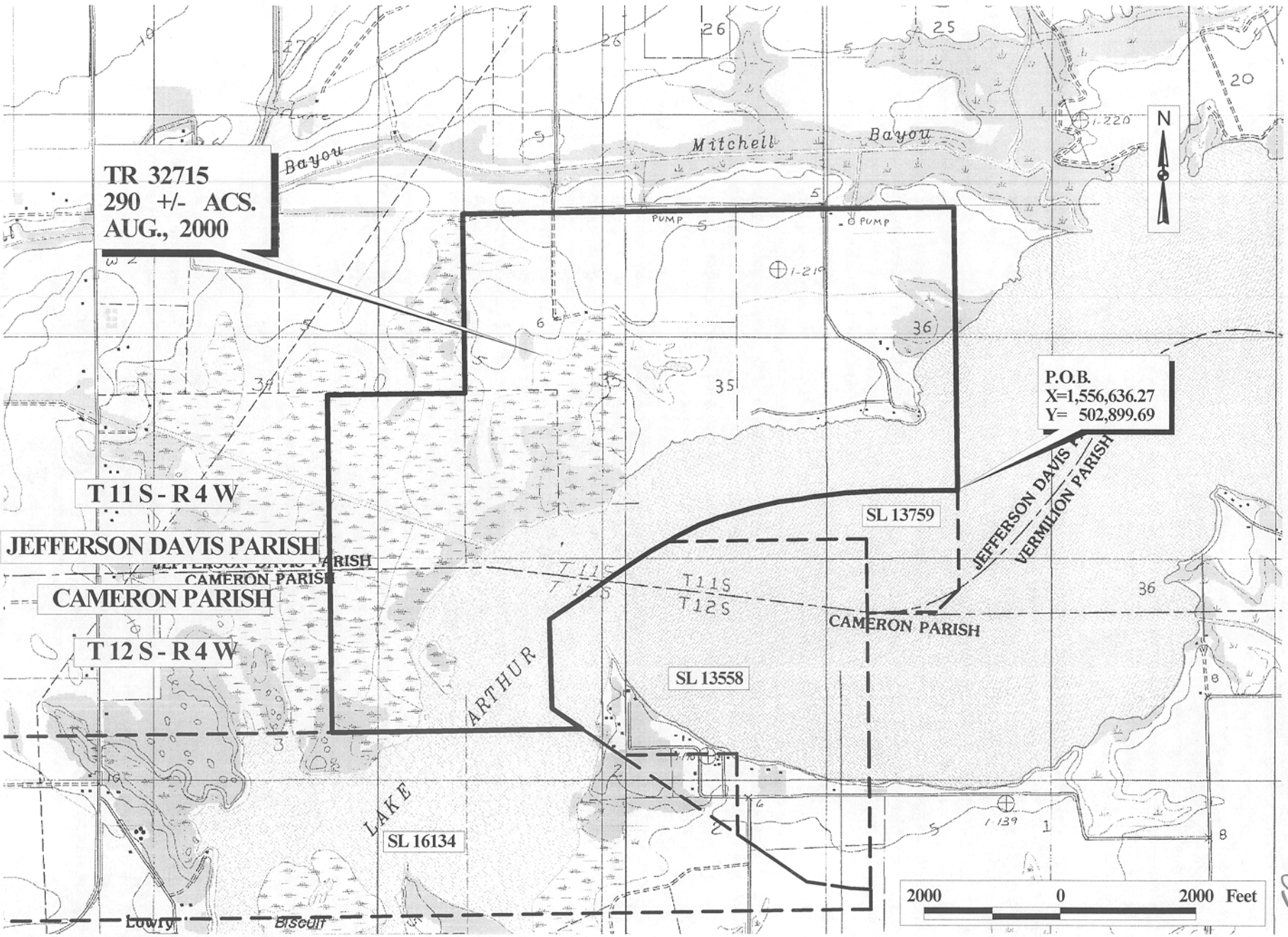
**TRACT 32715 - Jefferson Davis and Cameron Parishes, Louisiana**

All of the lands now or formerly constituting the beds and bottoms of all water bodies of every nature and description and all islands and other lands formed by accretion or reliction, except tax lands, owned by and not under mineral lease from the State of Louisiana on August 9, 2000, situated in Jefferson Davis and Cameron Parishes, Louisiana, within the following described boundaries: Beginning at the Northeast corner of State Lease No. 13759, as amended, having Coordinates of X = 1,556,636.27 and Y = 502,899.69; thence Northwesterly and Southwesterly on the Northern boundary of said State Lease No. 13759 to its Westernmost point, also being the Easternmost Northwest corner of State Lease No. 13558, as amended, having Coordinates of X = 1,552,373.80 and Y = 502,200.00; thence on the boundary of said State Lease No. 13558 the following courses: South 60 degrees 33 minutes 13 seconds West 268.68 feet, South 57 degrees 04 minutes 29 seconds West 595.17 feet, South 55 degrees 48 minutes 35 seconds West 597.82 feet, South 56 degrees 57 minutes 45 seconds West 613.70 feet, South 00 degrees 53 minutes 57 seconds East 1,314.76 feet and South 54 degrees 42 minutes 47 seconds East 535.97 feet to a point on its Southwestern boundary, also being the Westernmost Northeast corner of State Lease No. 16134, having Coordinates of X = 1,551,089.41 and Y = 499,449.68; thence West 3,653.18 feet on the North line of said State Lease No. 16134 to a point having Coordinates of X = 1,547,436.23 and Y = 499,449.68; thence North 5,000.00 feet to a point having Coordinates of X = 1,547,436.23 and Y = 504,449.68; thence East 2,000.00 feet to a point having Coordinates of X = 1,549,436.23 and Y = 504,449.68; thence East 2,000.00 feet to a point having Coordinates of X = 1,549,436.23 and Y = 504,449.68; thence North 2,650.00 feet to a point having Coordinates of X = 1,549,436.23 and Y = 507,099.68; thence East 7,200.04 feet to a point having Coordinates of X = 1,556,636.27 and Y = 507,099.68; thence South 4,199.99 feet to the point of beginning, containing approximately **290 acres**, as shown outlined in red on a plat on file in the Office of Mineral Resources, Department of Natural Resources. All bearings, distances and coordinates are based on Louisiana Coordinate System of 1927 (South Zone).

Applicant: Byron Soules

Bidder	Cash Payment	Price / Acre	Rental	Oil	Gas	Other

33



TR 32715  
 290 +/- ACS.  
 AUG., 2000

P.O.B.  
 X=1,556,636.27  
 Y= 502,899.69

T 11 S - R 4 W

JEFFERSON DAVIS PARISH

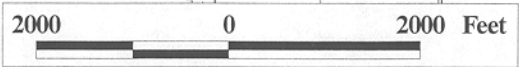
CAMERON PARISH

T 12 S - R 4 W

SL 13759

SL 13558

SL 16134



OFFICIAL COPY  
 OFFICE OF MINERAL RESOURCES  
 DEPT. OF NATURAL RESOURCES  
 DO NOT REMOVE

83