

NOT TO BE USED WITH A PORTION BID
 FOR INFORMATIONAL PURPOSES ONLY!

MAP NOT TO SCALE

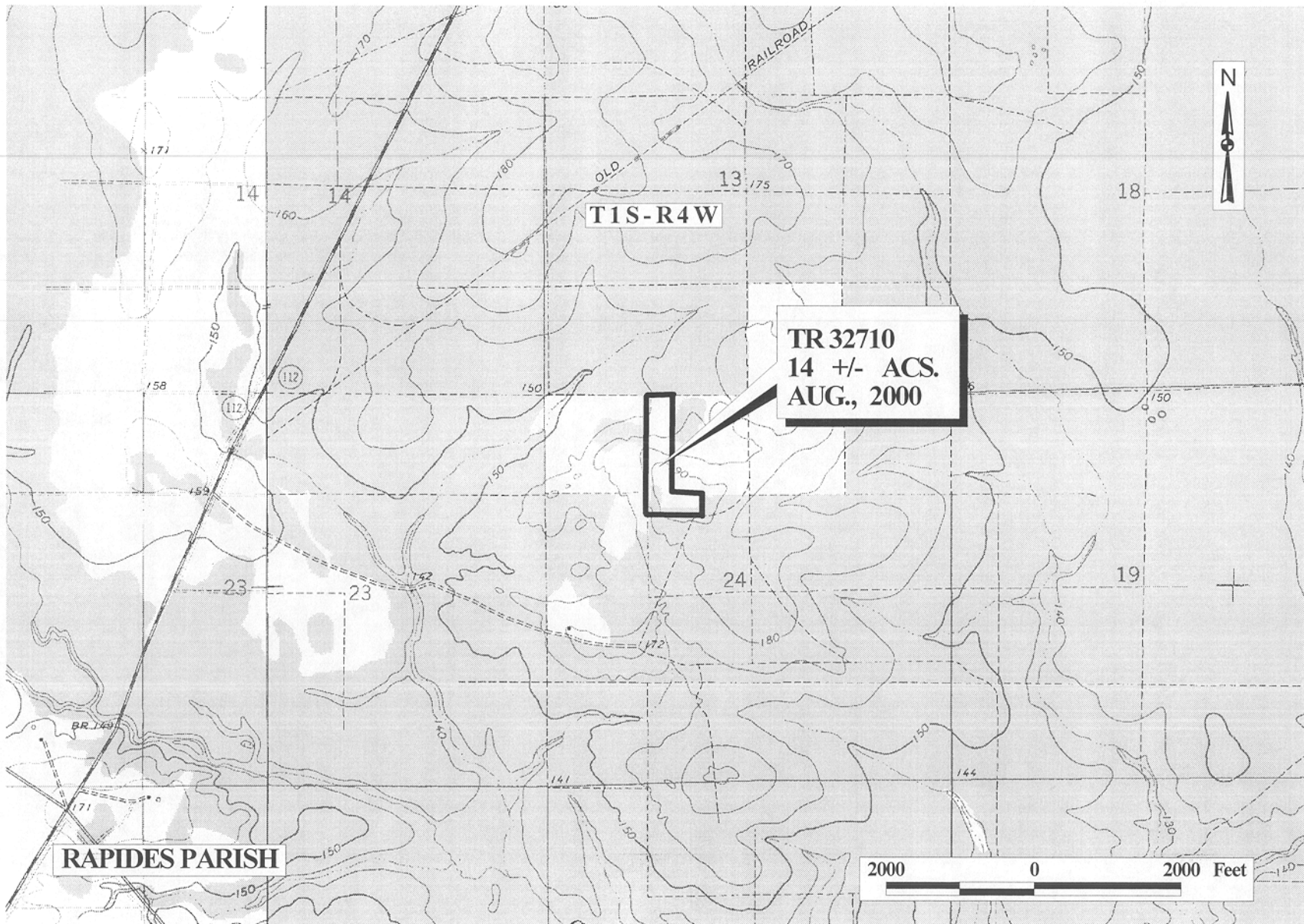
109

TRACT 32710 - Rapides Parish, Louisiana

All of the right, title and interest of the State of Louisiana in the mineral rights in and to the following described property, which is not under mineral lease from the State of Louisiana on August 9, 2000, situated in Rapides Parish, Louisiana, and being more fully described as follows: That certain tract of land being the West Half of the West Half of the Northeast Quarter of the Northwest Quarter and 4.4 acres located in the Northwest corner of the Southeast Quarter of the Northwest Quarter, Section 24, Township 1 South, Range 4 West, Rapides Parish, Louisiana, being the same property adjudicated to the State of Louisiana in the name of Lazine Johnson Estate for nonpayment of 1936 taxes as recorded in C.O.B. 200, page 664 of the Records of Rapides Parish, and as amended in C.O.B. 1290, page 127, recorded May 2, 1990, in the Records of Rapides Parish, containing approximately 14 acres, as shown outlined in red on a plat on file in the Office of Mineral Resources, Department of Natural Resources.

Applicant: Aaron C. Burchfield

Bidder	Cash Payment	Price / Acre	Rental	Oil	Gas	Other



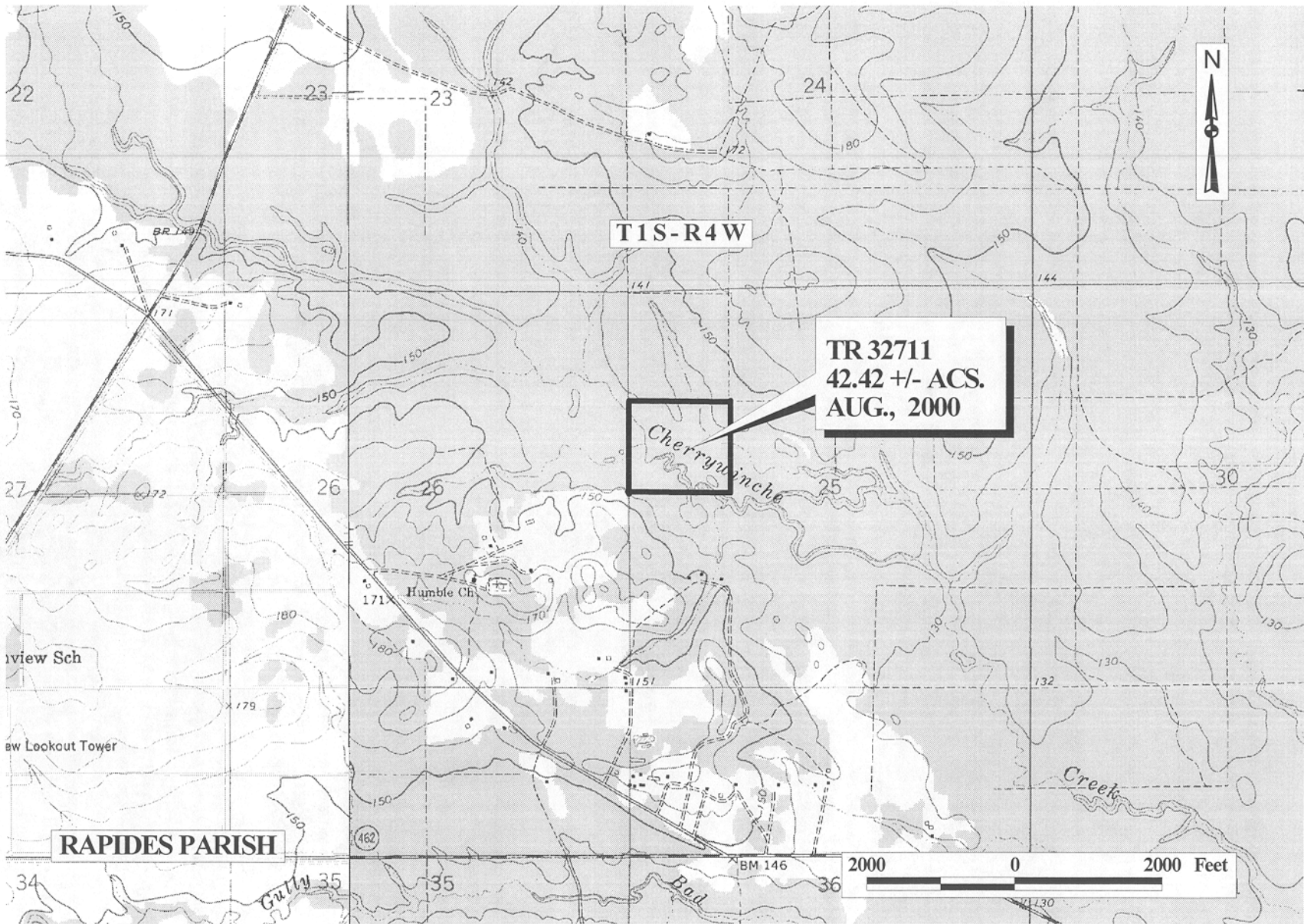
OFFICIAL COPY
OFFICE OF MINERAL RESOURCES
DEPT. OF NATURAL RESOURCES
DO NOT REMOVE

TRACT 32711 - Rapides Parish, Louisiana

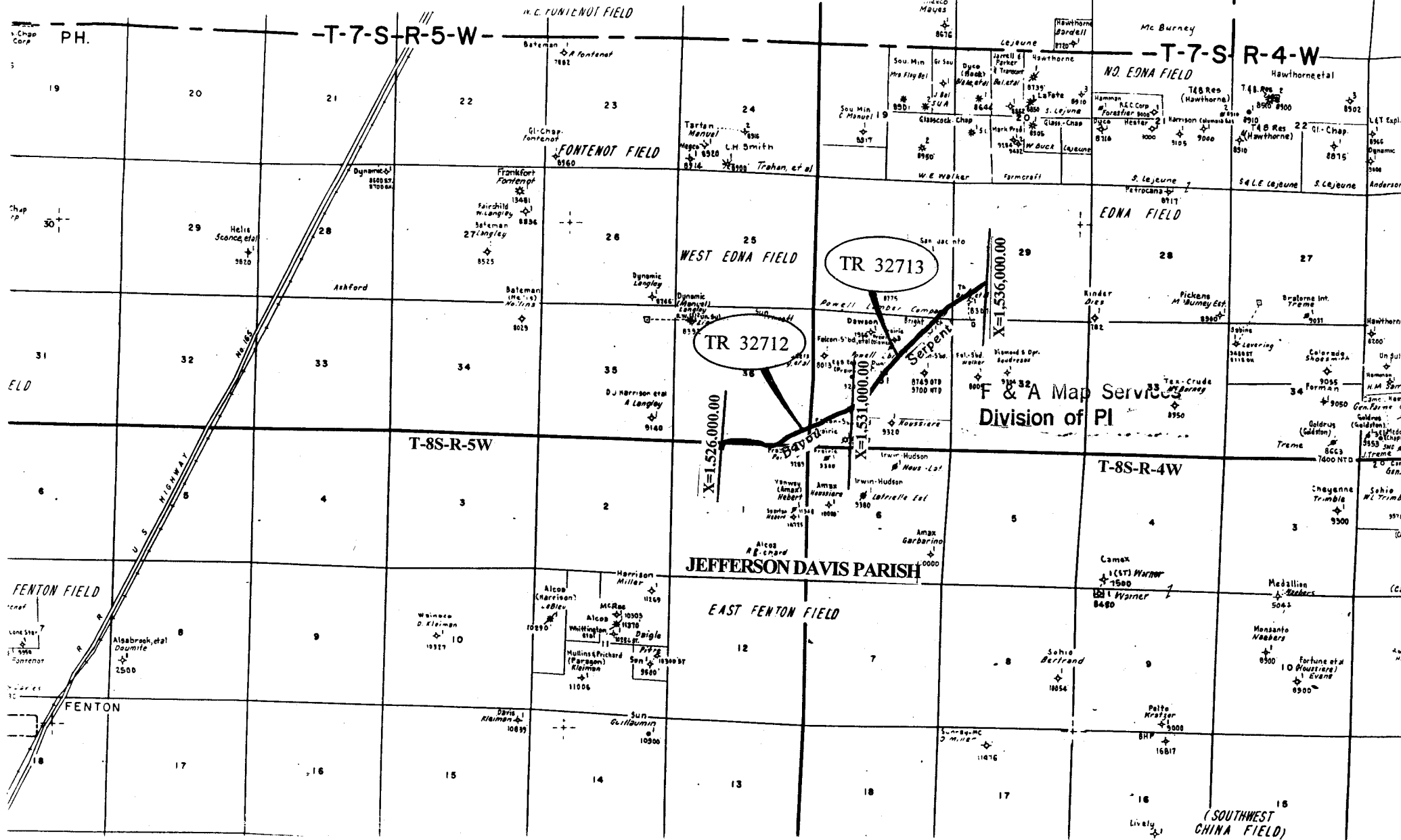
All lands owned by and not under mineral lease from the State of Louisiana on August 9, 2000, situated in Rapides Parish, Louisiana, and being more fully described as follows: The Southwest Quarter of the Northwest Quarter of Section 25, Township 1 South, Range 4 West, Rapides Parish, Louisiana, containing approximately **42.42 acres**, as shown outlined in red on a plat on file in the Office of Mineral Resources, Department of Natural Resources.

Applicant: Aaron C. Burchfield

Bidder	Cash Payment	Price / Acre	Rental	Oil	Gas	Other



OFFICIAL COPY
OFFICE OF MINERAL RESOURCES
DEPT. OF NATURAL RESOURCES
DO NOT REMOVE



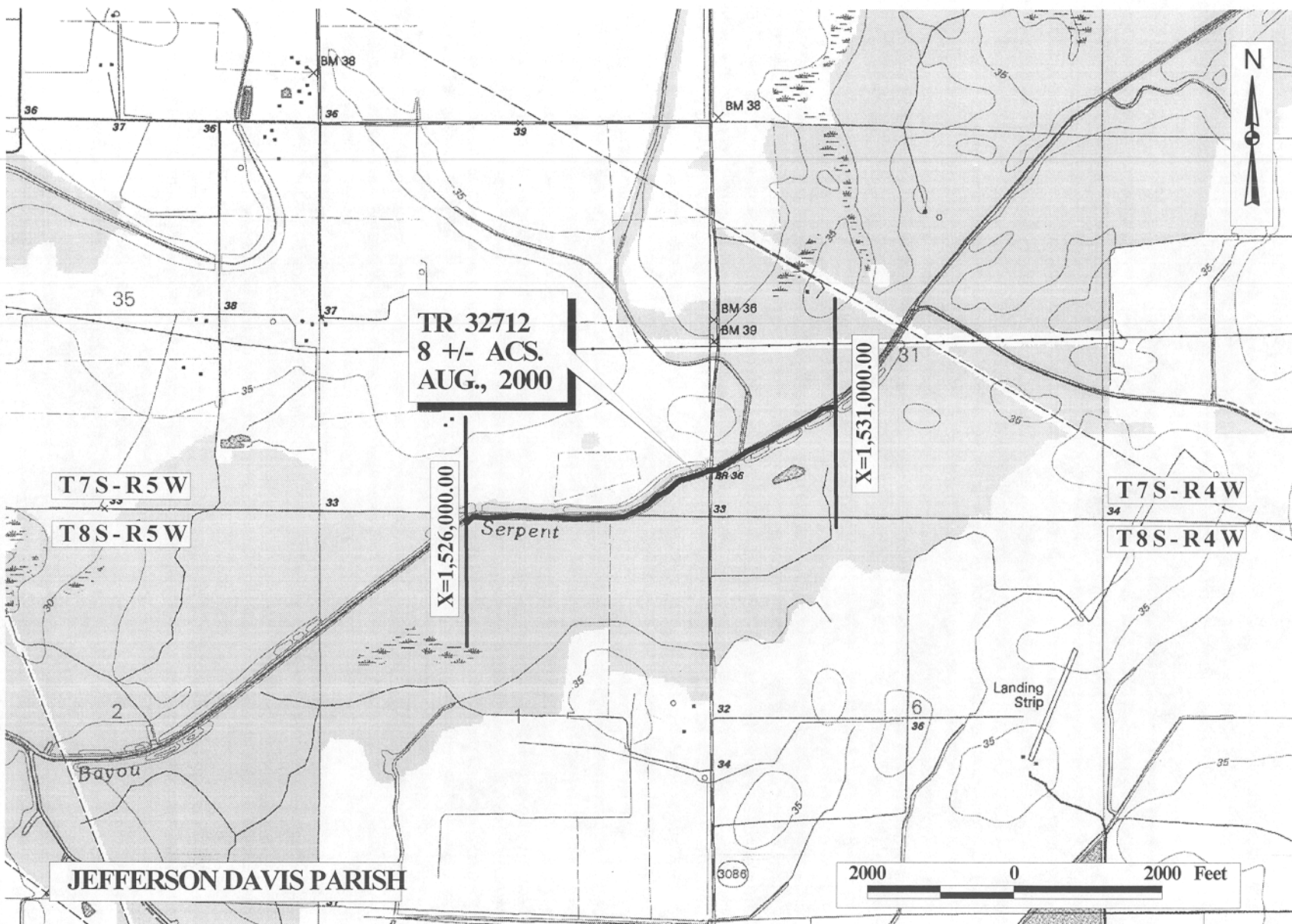
MAP NOT TO SCALE

TRACT 32712 - Jefferson Davis Parish, Louisiana

All of the lands now or formerly constituting the beds and bottoms of Bayou Serpent and all islands and other lands formed by accretion or reliction, except tax lands, owned by and not under mineral lease from the State of Louisiana on August 9, 2000, situated in Jefferson Davis Parish, Louisiana, within the following described boundaries: All that portion of Bayou Serpent bounded on the East or upstream by a North-South line having a Coordinate of X = 1,531,000.00 and bounded on the West or downstream by a North-South line having a Coordinate of X = 1,526,000.00, containing approximately 8 acres, as shown outlined in red on a plat on file in the Office of Mineral Resources, Department of Natural Resources. All bearings, distances and coordinates are based on Louisiana Coordinate System of 1927 (South Zone).

Applicant: Cash River Exploration, Inc.

Bidder	Cash Payment	Price / Acre	Rental	Oil	Gas	Other



OFFICIAL COPY
OFFICE OF MINERAL RESOURCES
DEPT. OF NATURAL RESOURCES
DO NOT REMOVE

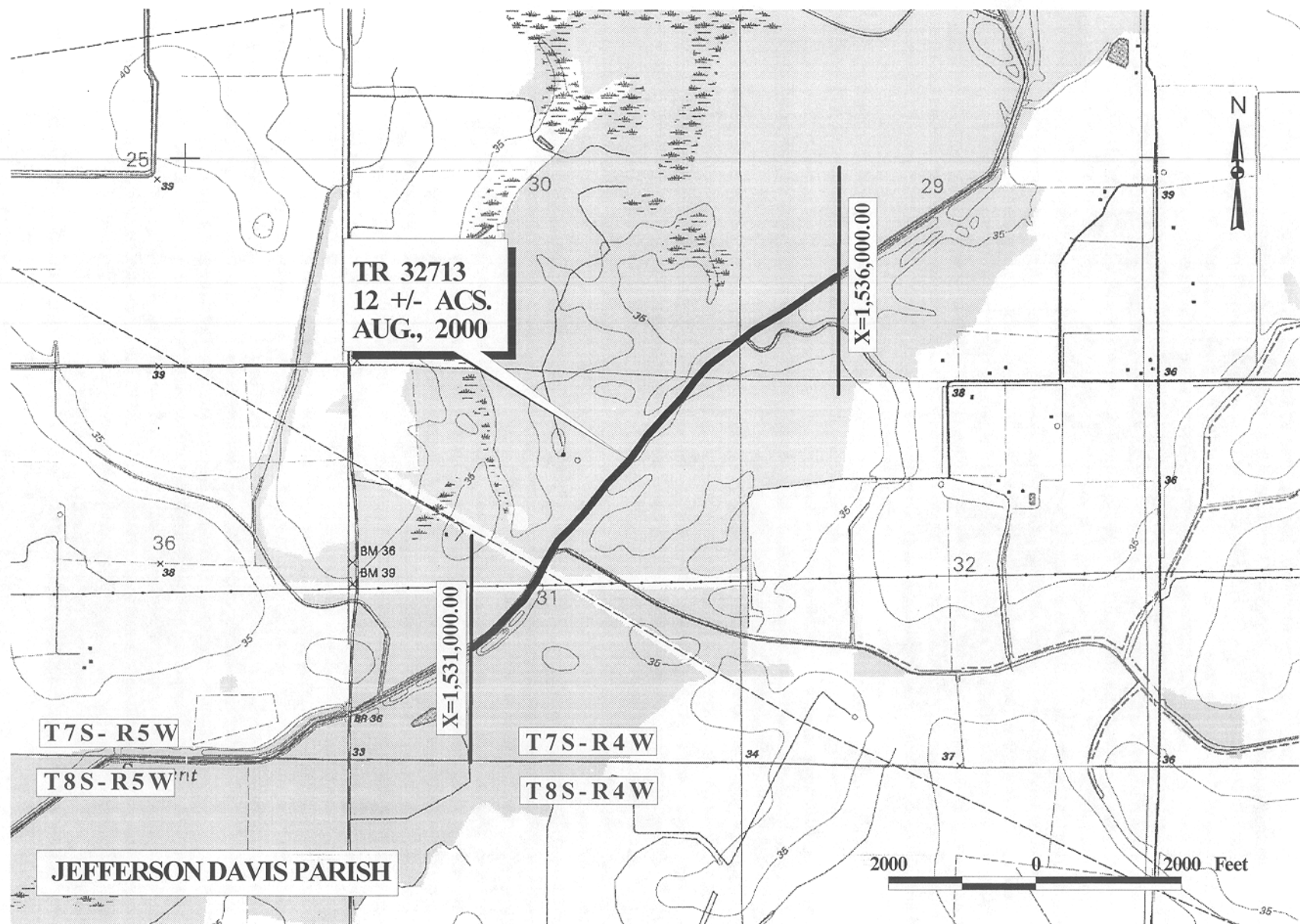
TRACT 32713 - Jefferson Davis Parish, Louisiana

All of the lands now or formerly constituting the beds and bottoms of Bayou Serpent and all islands and other lands formed by accretion or reliction, except tax lands, owned by and not under mineral lease from the State of Louisiana on August 9, 2000, situated in Jefferson Davis Parish, Louisiana, within the following described boundaries: All that portion of Bayou Serpent bounded on the East or upstream by a North-South line having a Coordinate of X = 1,536,000.00 and bounded on the West or downstream by a North-South line having a Coordinate of X = 1,531,000.00, containing approximately 12 acres, as shown outlined in red on a plat on file in the Office of Mineral Resources, Department of Natural Resources. All bearings, distances and coordinates are based on Louisiana Coordinate System of 1927 (South Zone).

Applicant: Cash River Exploration, Inc.

Bidder	Cash Payment	Price / Acre	Rental	Oil	Gas	Other

77



TR 32713
 12 +/- ACS.
 AUG., 2000

X=1,536,000.00

X=1,531,000.00

T7S-R5W

T7S-R4W

T8S-R5W^{int}

T8S-R4W

JEFFERSON DAVIS PARISH

2000 0 2000 Feet

77

OFFICIAL COPY
 OFFICE OF MINERAL RESOURCES
 DEPT. OF NATURAL RESOURCES
 DO NOT REMOVE