

NOT TO BE USED WITH A PORTION
FOR INFORMATIONAL PURPOSES ONLY

NEBO FIELD

MEANDER LINE
TR 32746

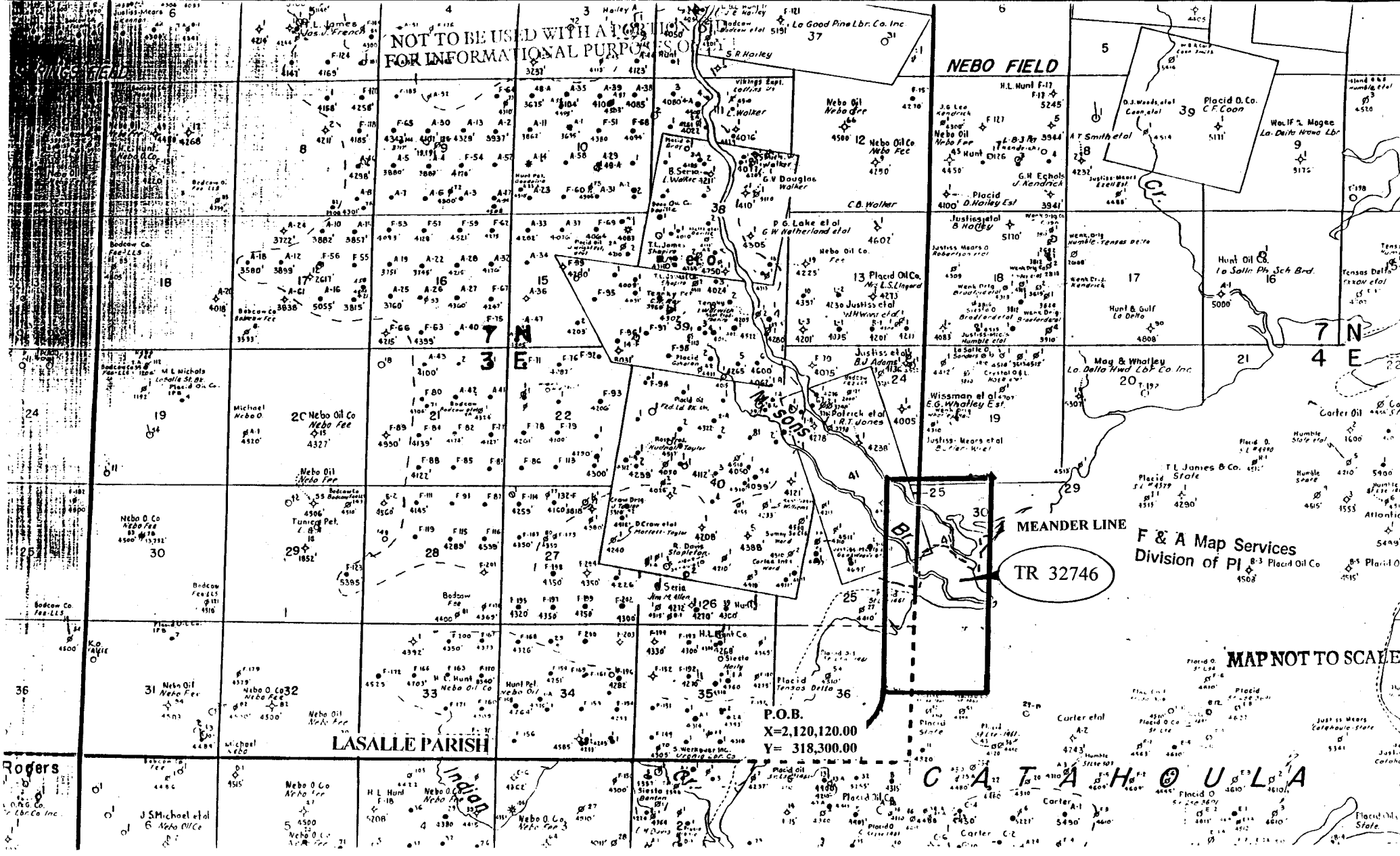
P.O.B.
X=2,120,120.00
Y= 318,300.00

LASALLE PARISH

MAP NOT TO SCALE

MAP NOT TO SCALE

167

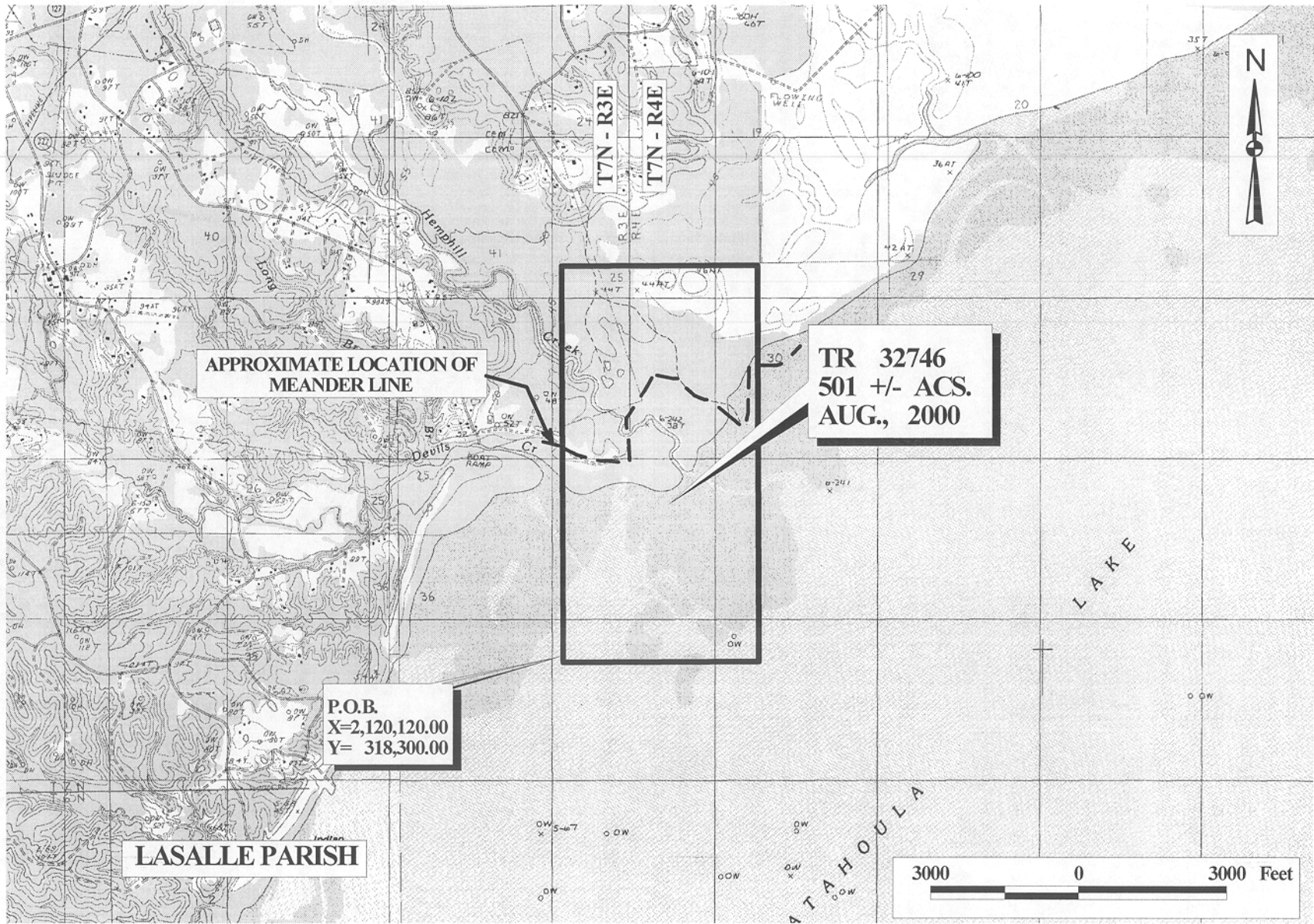


TRACT 32746 - LaSalle Parish, Louisiana

All of the lands now or formerly constituting the beds and bottoms of all water bodies of every nature and description and all islands and other lands formed by accretion or reliction, except tax lands, owned by and not under mineral lease from the State of Louisiana on August 9, 2000, situated in LaSalle Parish, Louisiana, within the following described boundaries: Beginning at a point having Coordinates of X = 2,120,120.00 and Y = 318,300.00; thence North 8,100.00 feet to a point having Coordinates of X = 2,120,120.00 and Y = 326,400.00; thence East 3,960.00 feet to a point having Coordinates of X = 2,124,080.00 and Y = 326,400.00; thence South 8,100.00 feet to a point having Coordinates of X = 2,124,080.00 and Y = 318,300.00; thence West 3,960.00 feet to the point of beginning, containing approximately **501 acres**, as shown outlined in red on a plat on file in the Office of Mineral Resources, Department of Natural Resources. All bearings, distances and coordinates are based on Louisiana Coordinate System of 1927 (North Zone).

Applicant: Buena Vista Corporation

Bidder	Cash Payment	Price / Acre	Rental	Oil	Gas	Other

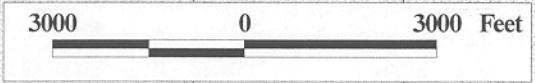


APPROXIMATE LOCATION OF MEANDER LINE

TR 32746
501 +/- ACS.
AUG., 2000

P.O.B.
X=2,120,120.00
Y= 318,300.00

LASALLE PARISH



OFFICIAL COPY
OFFICE OF MINERAL RESOURCES
DEPT. OF NATURAL RESOURCES
DO NOT REMOVE