

F & A Map Services
Division of PI

NOT TO BE USED WITH A PORTION BLD
FOR INFORMATIONAL PURPOSES ONLY!

MAP NOT TO SCALE

TRACT 32741 - PORTION OF BLOCK 32, BRETON SOUND AREA, Plaquemines Parish, Louisiana

All of the lands now or formerly constituting the beds and bottoms of all water bodies of every nature and description and all islands and other lands formed by accretion or reliction, except tax lands, belonging to the State of Louisiana and not under mineral lease on August 9, 2000, situated in Plaquemines Parish, Louisiana, and more particularly described as follows: Beginning at the Northeast corner of Block 32, Breton Sound Area, having Coordinates of X = 2,650,100.00 and Y = 337,080.00; thence South 9,562.50 feet along the East line of said Block 32 to a point having Coordinates of X = 2,650,100.00 and Y = 327,517.50; thence West 3,500.00 feet to a point on the East boundary of State Lease No. 1227, as amended, having Coordinates of X = 2,646,600.00 and Y = 327,517.50; thence North 9,562.50 feet along the East boundary of said State Lease No. 1227 to its Northeast corner located on the North line of said Block 32 having Coordinates of X = 2,646,600.00 and Y = 337,080.00; thence East 3,500.00 feet along the North line of said Block 32 to the point of beginning, containing approximately 768.34 acres, as shown outlined in red on a plat on file in the Office of Mineral Resources, Department of Natural Resources. All bearings, distances and coordinates are based on Louisiana Coordinate System of 1927 (South Zone).

NOTE: The State of Louisiana does hereby reserve, and this lease shall be subject to, the imprescriptible right of surface use in the nature of a servitude in favor of the Department of Natural Resources, including its Offices and Commissions, for the sole purpose of implementing, constructing, servicing and maintaining approved coastal zone management and/or restoration projects. Utilization of any and all rights derived under this lease by the mineral lessee, its agents, successors or assigns, shall not interfere with nor hinder the reasonable surface use by the Department of Natural Resources, its Offices or Commissions, as hereinabove reserved.

Applicant: Peck Energy Corporation

Bidder	Cash Payment	Price / Acre	Rental	Oil	Gas	Other



BLOCK 17

BLOCK 18

BLOCK 32

BLOCK 31

SL 1227

P.O.B.
X=2,650,100.00
Y= 337,080.00

TR 32741
768.34 +/- ACS.
AUG., 2000

**BRETON SOUND AREA
PLAQUEMINES PARISH**



OFFICIAL COPY
OFFICE OF MINERAL RESOURCES
DEPT. OF NATURAL RESOURCES
DO NOT REMOVE

TRACT 32742 - PORTION OF BLOCK 31, BRETON SOUND AREA, Plaquemines Parish, Louisiana

All of the lands now or formerly constituting the beds and bottoms of all water bodies of every nature and description and all islands and other lands formed by accretion or reliction, except tax lands, belonging to the State of Louisiana and not under mineral lease on August 9, 2000, situated in Plaquemines Parish, Louisiana, and more particularly described as follows: Beginning at the Northwest corner of Block 31, Breton Sound Area, having Coordinates of X = 2,650,100.00 and Y = 337,080.00; thence East 3,400.00 feet along the North line of said Block 31 to the most North Northwest corner of State Lease No. 16545 having Coordinates of X = 2,653,500.00 and Y = 337,080.00; thence South 35 degrees 52 minutes 56 seconds West 5,800.86 feet along the Northwest boundary of said State Lease No. 16545 to a corner located on the West line of said Block 31 having Coordinates of X = 2,650,100.00 and Y = 332,380.00; thence North 4,700.00 feet along the West line of said Block 31 to the point of beginning, containing approximately 183.43 acres, as shown outlined in red on a plat on file in the Office of Mineral Resources, Department of Natural Resources. All bearings, distances and coordinates are based on Louisiana Coordinate System of 1927 (South Zone).

NOTE: The State of Louisiana does hereby reserve, and this lease shall be subject to, the imprescriptible right of surface use in the nature of a servitude in favor of the Department of Natural Resources, including its Offices and Commissions, for the sole purpose of implementing, constructing, servicing and maintaining approved coastal zone management and/or restoration projects. Utilization of any and all rights derived under this lease by the mineral lessee, its agents, successors or assigns, shall not interfere with nor hinder the reasonable surface use by the Department of Natural Resources, its Offices or Commissions, as hereinabove reserved.

Applicant: Peck Energy Corporation

Bidder	Cash Payment	Price / Acre	Rental	Oil	Gas	Other



BLOCK 17

BLOCK 18

P.O.B.
X=2,650,100.00
Y= 337,080.00

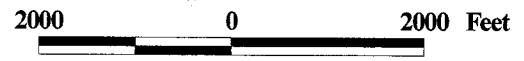
BLOCK 32

BLOCK 31

TR 32742
183.43 +/- ACS.
AUG., 2000

SL 16545

**BRETON SOUND AREA
PLAQUEMINES PARISH**



OFFICIAL COPY
OFFICE OF MINERAL RESOURCES
DEPT. OF NATURAL RESOURCES
DO NOT REMOVE

156

157

TRACT 32743 - PORTION OF BLOCK 31, BRETON SOUND AREA, Plaquemines Parish,
Louisiana

All of the lands now or formerly constituting the beds and bottoms of all water bodies of every nature and description and all islands and other lands formed by accretion or reliction, except tax lands, belonging to the State of Louisiana and not under mineral lease on August 9, 2000, situated in Plaquemines Parish, Louisiana, and more particularly described as follows: Beginning at the Southeast corner of State Lease No. 16434 located on the East line of Block 31, Breton Sound Area, having Coordinates of X = 2,664,850.00 and Y = 332,080.00; thence South 7,680.00 feet along the East line of said Block 31 to a point having Coordinates of X = 2,664,850.00 and Y = 324,400.00; thence West 3,375.00 feet to a point on the East boundary of State Lease No. 4865 having Coordinates of X = 2,661,475.00 and Y = 324,400.00; thence along the East and North boundary of said State Lease No. 4865 the following courses and distances: North 1,930.00 feet and West 4,000.00 feet to its Northwest corner, also being the Northeast corner of State Lease No. 4407, as amended, having Coordinates of X = 2,657,475.00 and Y = 326,330.00; thence West 7,375.00 feet along the North boundary of said State Lease No. 4407 to its Northwest corner located on the West line of said Block 31 having Coordinates of X = 2,650,100.00 and Y = 326,330.00; thence North 3,375.00 feet along the West line of said Block 31 to the Southwest corner of State Lease No. 16545 having Coordinates of X = 2,650,100.00 and Y = 329,705.00; thence along the South and East boundaries of said State Lease No. 16545 the following courses and distances: East 4,000.00 feet, North 14 degrees 02 minutes 10 seconds East 1,236.93 feet, North 27 degrees 53 minutes 50 seconds West 1,923.54 feet and North 18 degrees 31 minutes 51 seconds East 4,719.71 feet to its Northeast corner located on the North line of said Block 31 having Coordinates of X = 2,655,000.00 and Y = 337,080.00; thence East 3,550.00 feet along the North line of said Block 31 to the Northwest corner of State Lease No. 16659 having Coordinates of X = 2,658,550.00 and Y = 337,080.00; thence along the West and South boundary of said State Lease No. 16659 the following courses and distances: South 64 degrees 58 minutes 59 seconds West 3,310.59 feet, South 1,600.00 feet, South 56 degrees 18 minutes 36 seconds East 3,605.55 feet and East 3,500.00 feet to its Southeast corner, also being the Southwest corner of said State Lease No. 16434 having Coordinates of X = 2,662,050.00 and Y = 332,080.00; thence East 2,800.00 feet along the South boundary of said State Lease No. 16434 to the point of beginning, containing approximately 2,148.30 acres, as shown outlined in red on a plat on file in the Office of Mineral Resources, Department of Natural Resources. All bearings, distances and coordinates are based on Louisiana Coordinate System of 1927 (South Zone).

NOTE: The State of Louisiana does hereby reserve, and this lease shall be subject to, the imprescriptible right of surface use in the nature of a servitude in favor of the Department of Natural Resources, including its Offices and Commissions, for the sole purpose of implementing, constructing, servicing and maintaining approved coastal zone management and/or restoration projects. Utilization of any and all rights derived under this lease by the mineral lessee, its agents, successors or assigns, shall not interfere with nor hinder the reasonable surface use by the Department of Natural Resources, its Offices or Commissions, as hereinabove reserved.

Applicant: Peck Energy Corporation

Bidder	Cash Payment	Price / Acre	Rental	Oil	Gas	Other



BLOCK 17

BLOCK 18

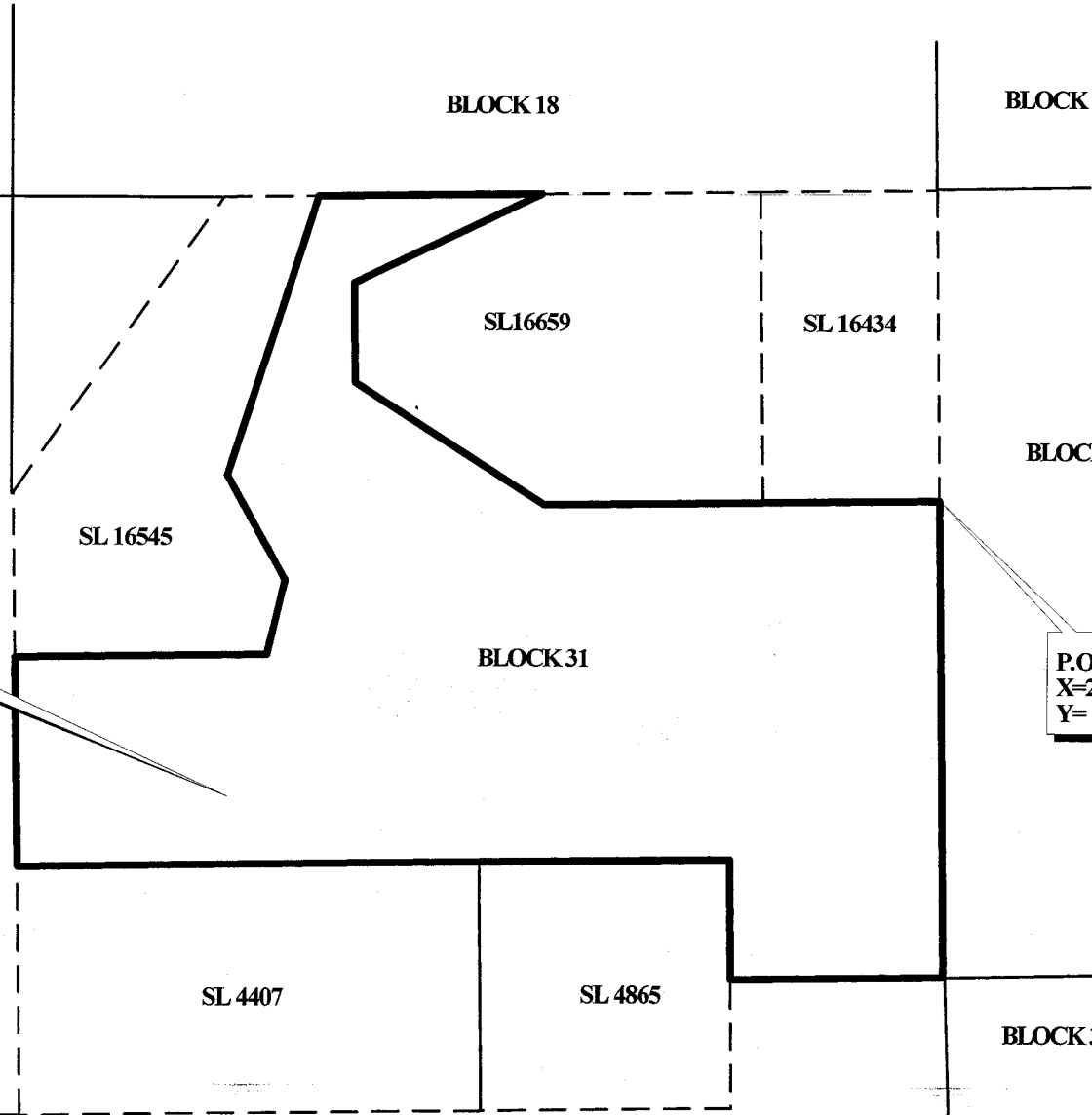
BLOCK 19

BLOCK 32

BLOCK 30

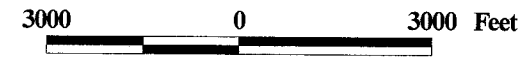
TR 32743
2,148.30 +/- ACS.
AUG., 2000

P.O.B.
X=2,664,850.00
Y= 332,080.00



BRETON SOUND AREA
PLAQUEMINES PARISH

OFFICIAL COPY
OFFICE OF MINERAL RESOURCES
DEPT. OF NATURAL RESOURCES
DO NOT REMOVE



159