

NOT TO BE USED WITH A PORTION BID  
FOR INFORMATIONAL PURPOSES ONLY!

MAP NOT TO SCALE

139

TRACT 32736 - PORTION OF BLOCK 18, BRETON SOUND AREA, Plaquemines Parish,  
Louisiana

All of the lands now or formerly constituting the beds and bottoms of all water bodies of every nature and description and all islands and other lands formed by accretion or reliction, except tax lands, belonging to the State of Louisiana and not under mineral lease on August 9, 2000, situated in Plaquemines Parish, Louisiana, and more particularly described as follows: Beginning at the Northwest corner of Block 18, Breton Sound Area, having Coordinates of X = 2,650,100.00 and Y = 351,830.00; thence East 2,200.00 feet along the North line of said Block 18 to the most North Northwest corner of State Lease No. 16594 having Coordinates of X = 2,652,300.00 and Y = 351,830.00; thence along the boundaries of said State Lease No. 16594 the following courses and distances: South 1,100.00 feet, South 27 degrees 01 minutes 11 seconds East 7,043.04 feet and East 1,877.00 feet to its most Southern Southeast corner having Coordinates of X = 2,657,377.00 and Y = 344,455.00, said point also being the Southwest corner of State Lease No. 16442 and the Northwest corner of State Lease No. 16543; thence along the boundaries of said State Lease No. 16543 the following courses and distances: South 33 degrees 29 minutes 31 seconds East 2,488.12 feet and North 50 degrees 45 minutes 13 seconds East 3,279.82 feet to its Northeast corner, also being the Southeast corner of said State Lease No. 16442 having Coordinates of X = 2,661,290.00 and Y = 344,455.00; thence East 1,060.00 feet to the most Northern Northwest corner of State Lease No. 16658 having Coordinates of X = 2,662,350.00 and Y = 344,455.00; thence along the boundaries of said State Lease No. 16658 the following courses and distances: South 3,950.68 feet, South 48 degrees 29 minutes 13 seconds West 3,205.11 feet and South 1,300.00 feet to its Southwest corner located on the South line of said Block 18 having Coordinates of X = 2,659,950.00 and Y = 337,080.00; thence West 4,650.00 feet along the South line of said Block 18 to the Southeast corner of State Lease No. 16544 having Coordinates of X = 2,655,300.00 and Y = 337,080.00; thence along the boundaries of said State Lease No. 16544 the following courses and distances: North 30 degrees 22 minutes 45 seconds West 3,361.55 feet, West 1,900.00 feet and South 46 degrees 50 minutes 51 seconds West 2,193.17 feet to a corner located on the West line of said Block 18 having Coordinates of X = 2,650,100.00 and Y = 341,080.00; thence North 10,750.00 feet along the West line of said Block 18 to the point of beginning, containing approximately 1,881.19 acres, as shown outlined in red on a plat on file in the Office of Mineral Resources, Department of Natural Resources. All bearings, distances and coordinates are based on Louisiana Coordinate System of 1927 (South Zone).

NOTE: It appears, according to our records, that a portion of this tract is located within the restrictive safety fairway area as set out by the Corps of Engineers, U.S. Army.

NOTE: The State of Louisiana does hereby reserve, and this lease shall be subject to, the imprescriptible right of surface use in the nature of a servitude in favor of the Department of Natural Resources, including its Offices and Commissions, for the sole purpose of implementing, constructing, servicing and maintaining approved coastal zone management and/or restoration projects. Utilization of any and all rights derived under this lease by the mineral lessee, its agents, successors or assigns, shall not interfere with nor hinder the reasonable surface use by the Department of Natural Resources, its Offices or Commissions, as hereinabove reserved.

Applicant: Peck Energy Corporation

41

Bidder	Cash Payment	Price / Acre	Rental	Oil	Gas	Other



BLOCK 16

BLOCK 15

BLOCK 17

P.O.B.  
X=2,650,100.00  
Y= 351,830.00

BLOCK 18

TR 32736  
1,881.19 +/- ACS.  
AUG., 2000

SL 16394

SL 16442

SL 16543

SL 16658

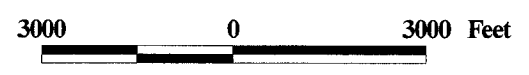
SL 16544

BLOCK 32

BLOCK 31

BRETON SOUND AREA  
PLAQUEMINES PARISH

OFFICIAL COPY  
OFFICE OF MINERAL RESOURCES  
DEPT. OF NATURAL RESOURCES  
DO NOT REMOVE



142

TRACT 32737 - PORTION OF BLOCK 18, BRETON SOUND AREA, Plaquemines Parish, Louisiana

All of the lands now or formerly constituting the beds and bottoms of all water bodies of every nature and description and all islands and other lands formed by accretion or reliction, except tax lands, belonging to the State of Louisiana and not under mineral lease on August 9, 2000, situated in Plaquemines Parish, Louisiana, and more particularly described as follows: Beginning at the Northeast corner of Block 18, Breton Sound Area, having Coordinates of X = 2,664,850.00 and Y = 351,830.00; thence South 7,375.00 feet along the East line of said Block 18 to the Northeast corner of State Lease No. 16658 having Coordinates of X = 2,664,850.00 and Y = 344,455.00; thence West 2,500.00 feet along the North boundary of said State Lease No. 16658 to its Northwest corner having Coordinates of X = 2,662,350.00 and Y = 344,455.00; thence West 1,060.00 feet to the Northeast corner of State Lease No. 16543, also being the Southeast corner of State Lease No. 16442 having Coordinates of X = 2,661,290.00 and Y = 344,455.00; thence along the boundaries of said State Lease No. 16442 the following courses and distances: North 50 degrees 48 minutes 45 seconds East 593.49 feet, North 20 degrees 16 minutes 57 seconds West 2,452.04 feet and South 70 degrees 46 minutes 10 seconds West 1,186.67 feet to the most East Southeast corner of State Lease No. 16594 having Coordinates of X = 2,659,779.55 and Y = 346,739.15; thence along the boundaries of State Lease No. 16594 the following courses: North 33 degrees 12 minutes 33 seconds West 1,423.31 feet, South 67 degrees 45 minutes 04 seconds West 2,376.97 feet and North 24 degrees 37 minutes 25 seconds West 5,280.15 feet to its most North Northeast corner located on the North line of said Block 18 having Coordinates of X = 2,654,600.00 and Y = 351,830.00; thence East 4,550.00 feet along the North line of said Block 18 to the Northwest corner of State Lease No. 16441 having Coordinates of X = 2,659,150.00 and Y = 351,830.00; thence along the boundaries of said State Lease No. 16441 the following courses and distances: South 25 degrees 03 minutes 27 seconds East 4,250.00 feet, North 64 degrees 51 minutes 03 seconds East 2,353.06 feet and North 26 degrees 38 minutes 93 seconds West 3,188.64 feet to its Northeast corner located on the North line of said Block 18 having Coordinates of X = 2,661,650.00 and Y = 351,830.00; thence East 3,200.00 feet along the North line of said Block 18 to the point of beginning, containing approximately 991.69 acres, as shown outlined in red on a plat on file in the Office of Mineral Resources, Department of Natural Resources. All bearings, distances and coordinates are based on Louisiana Coordinate System of 1927 (South Zone).

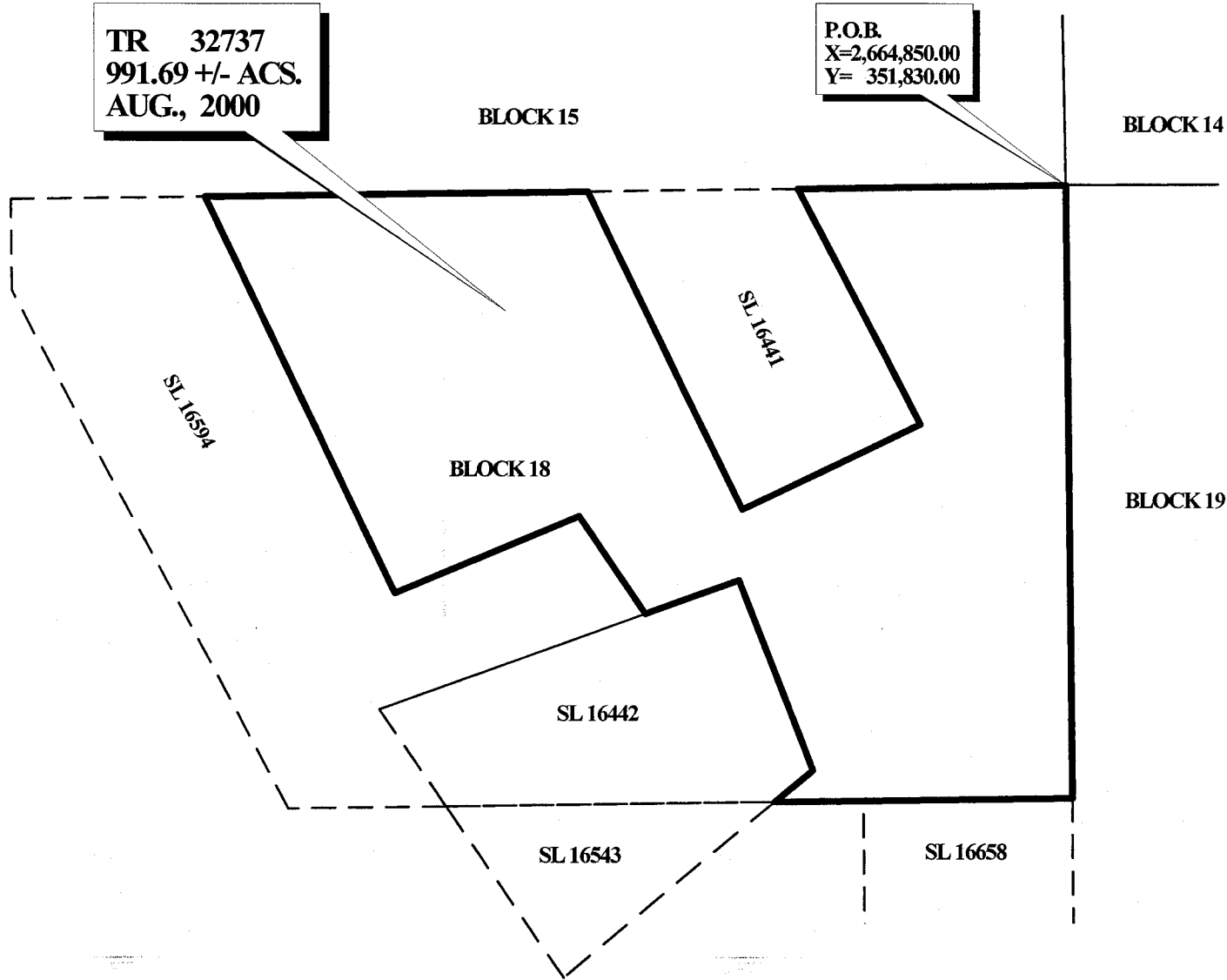
NOTE: The State of Louisiana does hereby reserve, and this lease shall be subject to, the imprescriptible right of surface use in the nature of a servitude in favor of the Department of Natural Resources, including its Offices and Commissions, for the sole purpose of implementing, constructing, servicing and maintaining approved coastal zone management and/or restoration projects. Utilization of any and all rights derived under this lease by the mineral lessee, its agents, successors or assigns, shall not interfere with nor hinder the reasonable surface use by the Department of Natural Resources, its Offices or Commissions, as hereinabove reserved.

Applicant: Peck Energy Corporation

Bidder	Cash Payment	Price / Acre	Rental	Oil	Gas	Other

TR 32737  
991.69 +/- ACS.  
AUG., 2000

P.O.B.  
X=2,664,850.00  
Y= 351,830.00



**BRETON SOUND AREA  
PLAQUEMINES PARISH**

OFFICIAL COPY  
OFFICE OF MINERAL RESOURCES  
DEPT. OF NATURAL RESOURCES  
DO NOT REMOVE



145

TRACT 32738 - PORTION OF BLOCK 19, BRETON SOUND AREA, Plaquemines Parish, Louisiana

All of the lands now or formerly constituting the beds and bottoms of all water bodies of every nature and description and all islands and other lands formed by accretion or reliction, except tax lands, belonging to the State of Louisiana and not under mineral lease on August 9, 2000, situated in Plaquemines Parish, Louisiana, and more particularly described as follows: Beginning at the Northeast corner of Block 19, Breton Sound Area, having Coordinates of X = 2,679,600.00 and Y = 351,830.00; thence South 7,375.00 feet along the East line of said Block 19 to a point having Coordinates of X = 2,679,600.00 and Y = 344,455.00; thence West 5,082.30 feet to the Northeast corner of State Lease No. 16612 having Coordinates of X = 2,674,517.70 and Y = 344,455.00; thence West 1,648.70 feet along the North boundary of said State Lease No. 16612 to its Northwest corner having Coordinates of X = 2,672,896.00 and Y = 344,455.00; thence West 2,219.00 feet to the Northeast corner of State Lease No. 16610 having Coordinates of X = 2,670,650.00 and Y = 344,455.00; thence West 5,800.00 feet along the North boundary of said State Lease No. 16610 to its Northwest corner located on the West line of said Block 19 having Coordinates of X = 2,664,850.00 and Y = 344,455.00; thence North 7,375.00 feet along the West line of said Block 19 to its Northwest corner having Coordinates of X = 2,664,850.00 and Y = 351,830.00; thence East 14,750.00 feet along the North line of said Block 19 to the point of beginning, containing approximately 2,497.27 acres, as shown outlined in red on a plat on file in the Office of Mineral Resources, Department of Natural Resources. All bearings, distances and coordinates are based on Louisiana Coordinate System of 1927 (South Zone).

NOTE: The State of Louisiana does hereby reserve, and this lease shall be subject to, the imprescriptible right of surface use in the nature of a servitude in favor of the Department of Natural Resources, including its Offices and Commissions, for the sole purpose of implementing, constructing, servicing and maintaining approved coastal zone management and/or restoration projects. Utilization of any and all rights derived under this lease by the mineral lessee, its agents, successors or assigns, shall not interfere with nor hinder the reasonable surface use by the Department of Natural Resources, its Offices or Commissions, as hereinabove reserved.

Applicant: Peck Energy Corporation

Bidder	Cash Payment	Price / Acre	Rental	Oil	Gas	Other





TR 32738  
2,497.27 +/- ACS.  
AUG., 2000

P.O.B.  
X=2,679,600.00  
Y= 351,830.00

BLOCK 15

BLOCK 14

BLOCK 13

BLOCK 18

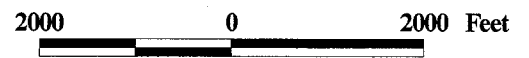
BLOCK 19

BLOCK 20

SL 16610

SL 16612

**BRETON SOUND AREA  
PLAQUEMINES PARISH**



OFFICIAL COPY  
OFFICE OF MINERAL RESOURCES  
DEPT. OF NATURAL RESOURCES  
DO NOT REMOVE

1471

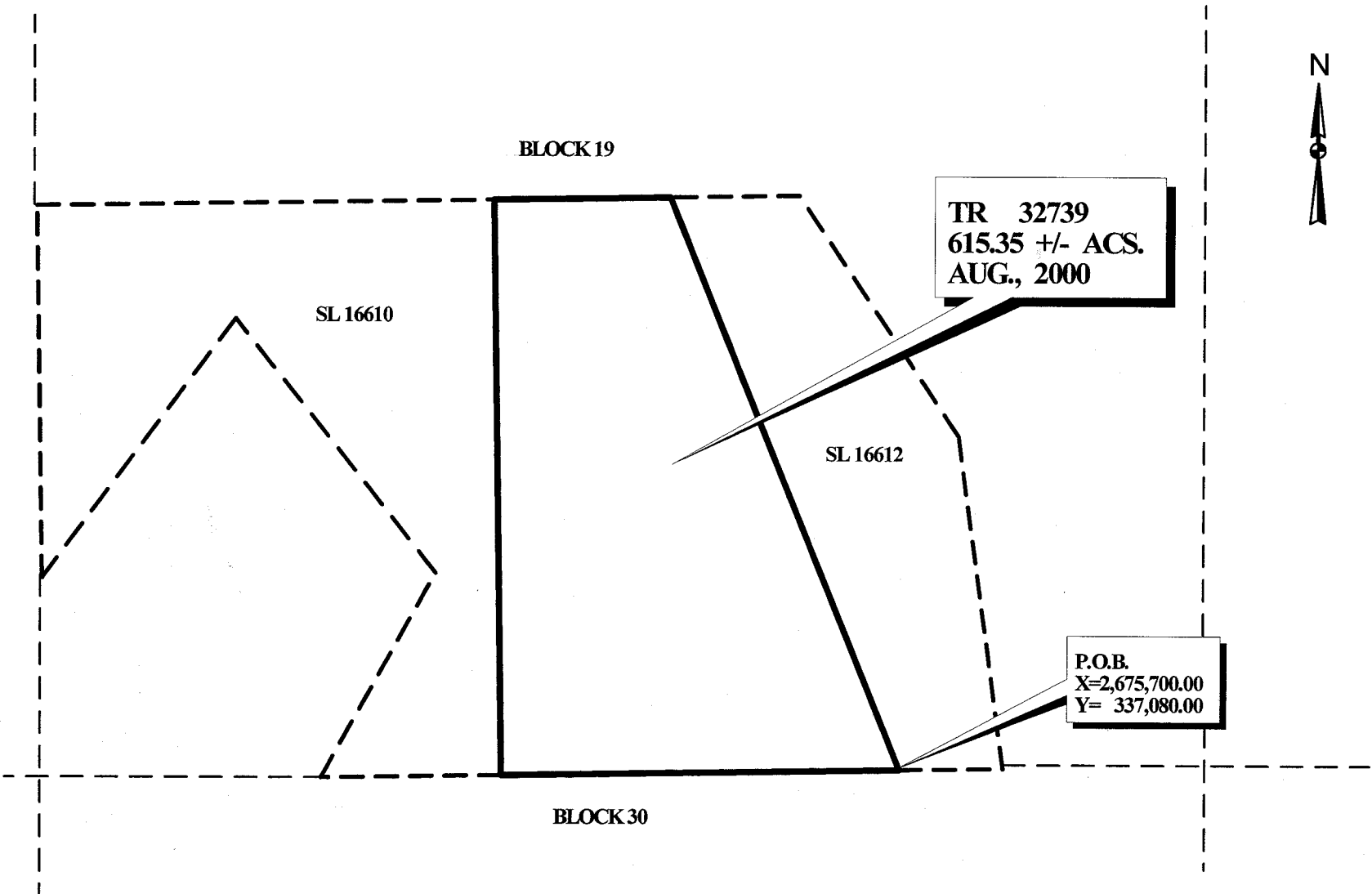
**TRACT 32739 - PORTION OF BLOCK 19, BRETON SOUND AREA, Plaquemines Parish, Louisiana**

All of the lands now or formerly constituting the beds and bottoms of all water bodies of every nature and description and all islands and other lands formed by accretion or reliction, except tax lands, belonging to the State of Louisiana and not under mineral lease on August 9, 2000, situated in Plaquemines Parish, Louisiana, and more particularly described as follows: Beginning at a point on the South line of Block 19, Breton Sound Area, having Coordinates of X = 2,675,700.00 and Y = 337,080.00, said point also being the Southwest corner of State Lease No. 16612; thence West 5,050.00 feet along the South line of said Block 19 to the Southeast corner of State Lease No. 16610 having Coordinates of X = 2,670,650.00 and Y = 337,080.00; thence North 7,375.00 feet along the East boundary of said State Lease No. 16610 to its Northeast corner having of X = 2,670,650.00 and Y = 344,455.00; thence East 2,219.00 feet to the Northwest corner of said State Lease No. 16612 having Coordinates of X = 2,672,869.00 and Y = 344,455.00; thence South 21 degrees 00 minutes 00 seconds East 7,899.70 feet along the West boundary of said State Lease No. 16612 to the point of beginning, containing approximately **615.35 acres**, as shown outlined in red on a plat on file in the Office of Mineral Resources, Department of Natural Resources. All bearings, distances and coordinates are based on Louisiana Coordinate System of 1927 (South Zone).

NOTE: The State of Louisiana does hereby reserve, and this lease shall be subject to, the imprescriptible right of surface use in the nature of a servitude in favor of the Department of Natural Resources, including its Offices and Commissions, for the sole purpose of implementing, constructing, servicing and maintaining approved coastal zone management and/or restoration projects. Utilization of any and all rights derived under this lease by the mineral lessee, its agents, successors or assigns, shall not interfere with nor hinder the reasonable surface use by the Department of Natural Resources, its Offices or Commissions, as hereinabove reserved.

Applicant: Peck Energy Corporation

Bidder	Cash Payment	Price / Acre	Rental	Oil	Gas	Other



BLOCK 19

TR 32739  
615.35 +/- ACS.  
AUG., 2000

SL 16610

SL 16612

P.O.B.  
X=2,675,700.00  
Y= 337,080.00

BLOCK 30

**BRETON SOUND AREA  
PLAQUEMINES PARISH**

2000 0 2000 Feet

OFFICIAL COPY  
OFFICE OF MINERAL RESOURCES  
DEPT. OF NATURAL RESOURCES  
DO NOT REMOVE

149

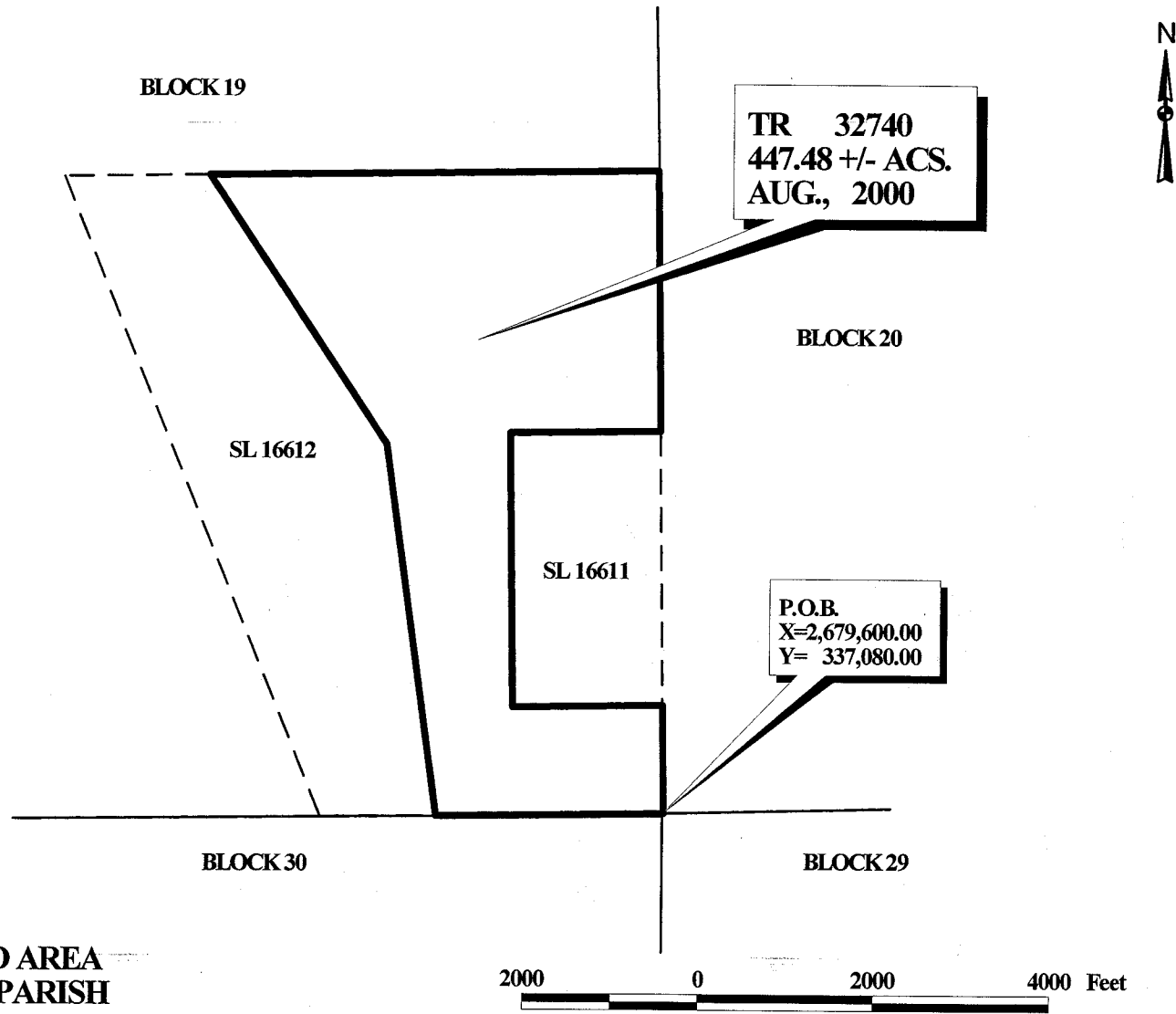
**TRACT 32740 - PORTION OF BLOCK 19, BRETON SOUND AREA, Plaquemines Parish, Louisiana**

All of the lands now or formerly constituting the beds and bottoms of all water bodies of every nature and description and all islands and other lands formed by accretion or reliction, except tax lands, belonging to the State of Louisiana and not under mineral lease on August 9, 2000, situated in Plaquemines Parish, Louisiana, and more particularly described as follows: Beginning at the Southeast corner of Block 19, Breton Sound Area, having Coordinates of X = 2,679,600.00 and Y = 337,080.00; thence West 2,580.00 feet along the South line of said Block 19 to the Southeast corner of State Lease No. 16612 having Coordinates of X = 2,677,020.00 and Y = 337,080.00; thence along the East boundary of said State Lease No. 16612 the following courses: North 07 degrees 00 minutes 00 seconds West 4,300.00 feet and North 32 degrees 29 minutes 06 seconds West 3,683.38 feet to the Northeast corner of said State Lease No. 16612 having Coordinates of X = 2,674,517.70 and Y = 344,455.00; thence East 5,082.30 feet to a point on the East line of said Block 19 having Coordinates of X = 2,679,600.00 and Y = 344,455.00; thence South 2,985.00 feet along the East line of said Block 19 to the Northeast corner of State Lease No. 16611 having Coordinates of X = 2,679,600.00 and Y = 341,470.00; thence along the boundaries of the said State Lease No. 16611 the following courses: West 1,700.00 feet to its Southeast corner located on the East line of said Block 19 having Coordinates of X = 2,679,600.00 and Y = 338,320.00; thence South 1,240.00 feet to the point, of beginning, containing approximately 447.48 acres, as shown outlined in red on a plat on file in the Office of Mineral Resources, Department of Natural Resources. All bearings, distances and coordinates are based on Louisiana Coordinate System of 1927 (South Zone).

NOTE: The State of Louisiana does hereby reserve, and this lease shall be subject to, the imprescriptible right of surface use in the nature of a servitude in favor of the Department of Natural Resources, including its Offices and Commissions, for the sole purpose of implementing, constructing, servicing and maintaining approved coastal zone management and/or restoration projects. Utilization of any and all rights derived under this lease by the mineral lessee, its agents, successors or assigns, shall not interfere with nor hinder the reasonable surface use by the Department of Natural Resources, its Offices or Commissions, as hereinabove reserved.

Applicant: Peck Energy Corporation

Bidder	Cash Payment	Price / Acre	Rental	Oil	Gas	Other



**BRETON SOUND AREA  
PLAQUEMINES PARISH**

OFFICIAL COPY  
OFFICE OF MINERAL RESOURCES  
DEPT. OF NATURAL RESOURCES  
DO NOT REMOVE