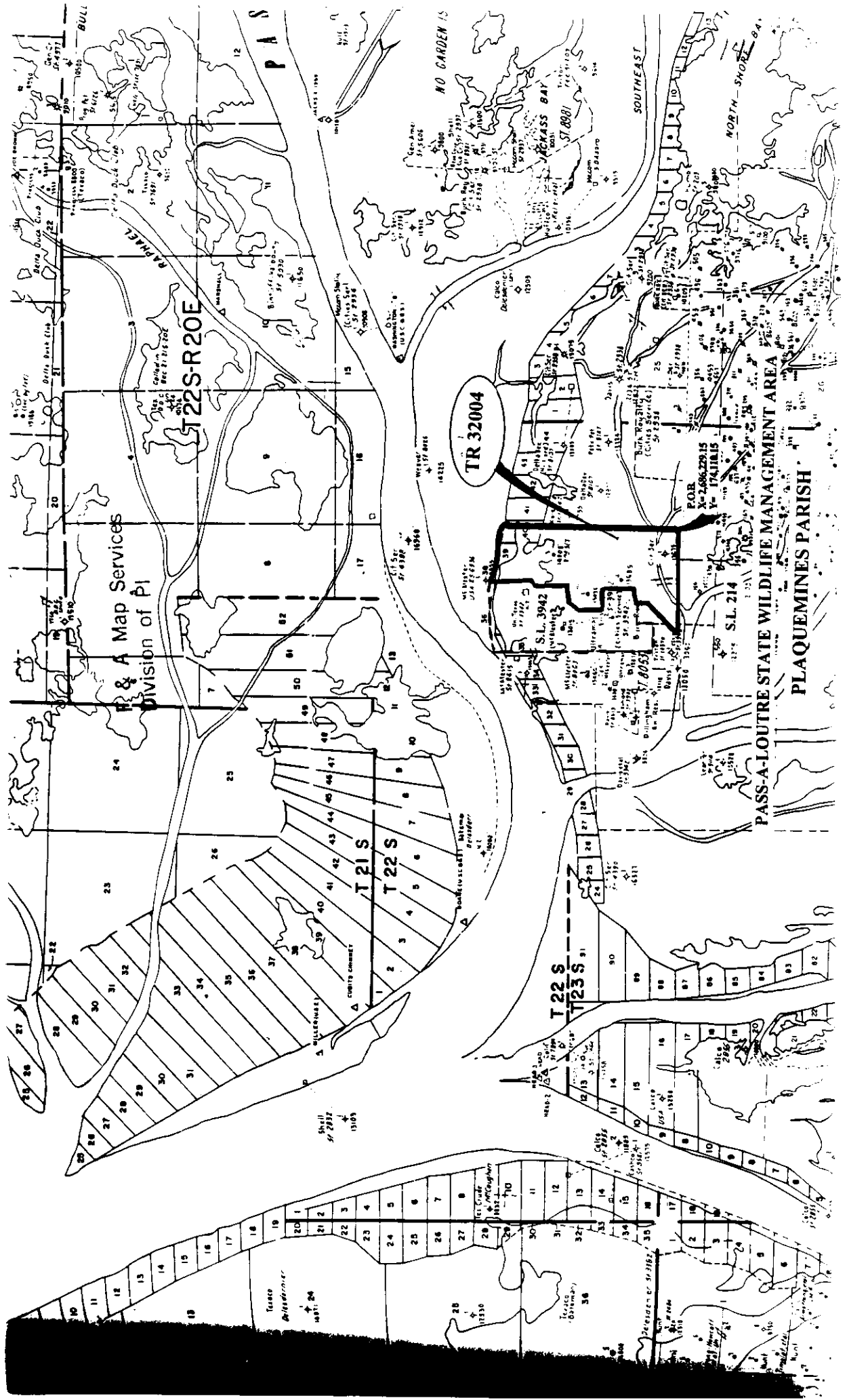


PASS-A-LOUTRE

TRACT

NOT TO BE USED WITH A PORTION BID
FOR INFORMATIONAL PURPOSES ONLY!

MAP NOT TO SCALE



TRACT 32004 - Plaquemines Parish, Louisiana

All state owned lands and water bottoms not under mineral lease on August 11, 1999, within the confines of the Pass-a-Loutre Wildlife Management Area as defined by the Department of Wildlife & Fisheries and included in a title opinion from the Office of the Governor, dated August 3, 1998, situated in Plaquemines Parish, Louisiana, within the following boundaries: Beginning at a point having Coordinates of X = 2,686,229.15 and Y = 174,110.15; thence West 4,121.23 feet to a point having Coordinates of X = 2,682,107.92 and Y = 174,110.15; thence North 48 degrees 10 minutes 17 seconds East 1,744.30 feet to a point having Coordinates of X = 2,683,407.68 and Y = 175,273.43; thence North 08 degrees 07 minutes 34 seconds West 500.00 feet to a point on the Southern boundary of State Lease No. 3942, as amended, having Coordinates of X = 2,683,337.00 and Y = 175,768.41; thence on the boundaries of said State Lease No. 3942 the following courses: North 86 degrees 17 minutes 48 seconds East 585.82 feet, North 03 degrees 42 minutes 10 seconds West 1,285.55 feet, South 86 degrees 17 minutes 48 seconds West 765.88 feet, North 03 degrees 42 minutes 10 seconds West 965.88 feet, North 42 degrees 00 minutes 58 seconds East 507.22 feet, North 86 degrees 17 minutes 50 seconds East 650.04 feet, North 03 degrees 42 minutes 11 seconds West 1,320.00 feet, North 86 degrees 17 minutes 49 seconds East 197.63 feet, North 03 degrees 42 minutes 10 seconds West 1,690.68 feet to a point having Coordinates of X = 2,684,002.88 and Y = 181,439.51; thence South 71 degrees 17 minutes 10 seconds East 829.81 feet to a point having Coordinates of X = 2,684,788.81 and Y = 181,173.27; thence South 87 degrees 34 minutes 09 seconds East 906.37 feet to a point having Coordinates of X = 2,685,694.36 and Y = 181,134.83; thence South 75 degrees 47 minutes 03 seconds East 551.68 feet to a point having Coordinates of X = 2,686,229.15 and Y = 180,999.35; thence South 6,889.20 feet to the point of beginning, **LESS AND EXCEPT**, if any, that portion of State Lease No. 214, as amended, and State Lease No. 3942, as amended, which may lie within the above described tract and **LESS AND EXCEPT** any privately owned land that may be located within the above described tract containing approximately **433.33 acres** as shown outlined in red on a plat on file in the Office of Mineral Resources, Department of Natural Resources. All bearings, distances and coordinates are based on Louisiana Coordinate System of 1927 (South Zone).

NOTE: This tract is located within the Pass-a-Loutre Wildlife Management Area. Any operations on said tract shall be coordinated with the Louisiana Department of Wildlife and Fisheries. Special Rules and Regulations have been promulgated by the Louisiana Department of Wildlife and Fisheries for the protection of the game and wildlife for some management areas. Any lease awarded by the Board on said tract shall be subject to any applicable Rules and Regulations of said management area. Copies of these Rules and Regulations may be obtained from the Louisiana Department of Wildlife and Fisheries through the Assistant Secretary, Office of Wildlife, upon request.

NOTE: A minimum bid of \$350.00 per acre and a twenty-five percent (25%) royalty is required by the Department of Wildlife and Fisheries for this tract to be awarded a lease.

NOTE:

1. No activities will be allowed without written authorization of the Louisiana Department of Wildlife and Fisheries.
2. Proposed projects will be evaluated on a case by case basis.

Modifications to proposed projects features including but not limited to access routes, spoil placement, well sites, flowlines and appurtenant structures may be required by the Department of Wildlife and Fisheries.

3. Compliance with the Pass-a-Loutre WMA mineral regulations will be required unless otherwise specified by the Department.

4. Compensatory mitigation will be required to offset unavoidable wetland impacts.

5. Removal of all structures, facilities and equipment will be required within 120 days of abandonment unless otherwise agreed to in writing by the Louisiana Department of Wildlife and Fisheries.

6. No activities will be allowed during the waterfowl season unless authorized by the Department.

7. Prior to submitting applications for wetland permits to Federal and State permitting agencies, the leaseholder shall coordinate project details with the Louisiana Department of Wildlife and Fisheries, Fur and Refuge Division. Contact person for the Department will be Mike Windham (504)568-5886.

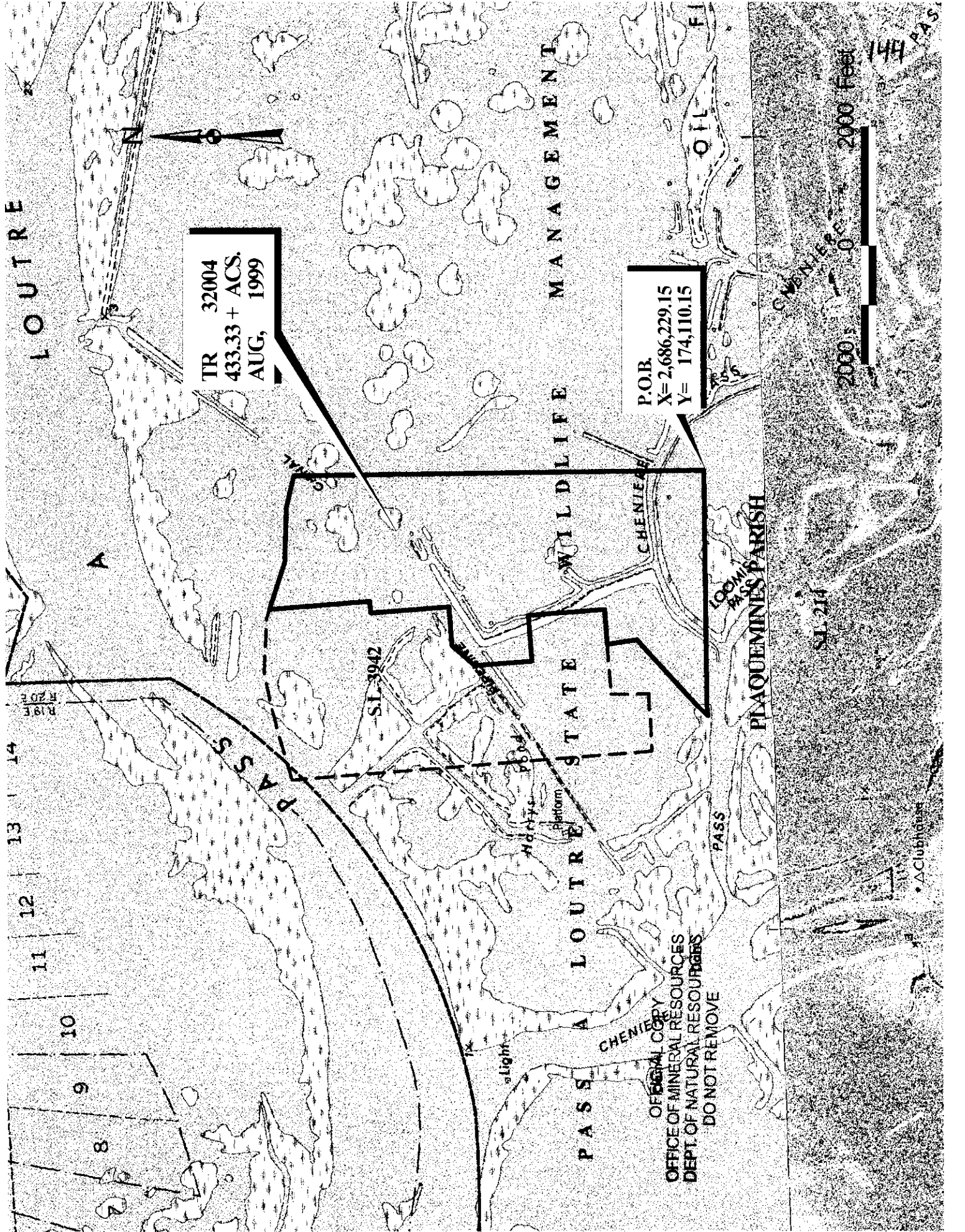
NOTE: The State of Louisiana does hereby reserve, and this lease shall be subject to, the imprescriptible right of surface use in the nature of a servitude in favor of the Department of Natural Resources and the Louisiana Department of Wildlife and Fisheries, including its Offices and Commissions, for the sole purpose of implementing, constructing, servicing and maintaining approved coastal zone management and/or restoration projects. Utilization of any and all rights derived under this lease by the mineral lessee, its agents, successors or assigns, shall not interfere with nor hinder the reasonable surface use by the Department of Natural Resources and the Louisiana Department of Wildlife and Fisheries, its Offices or Commissions, as hereinabove reserved.

Applicant: Karl Bourque

Bidder	Cash Payment	Price/Acre	Rental	Oil	Gas	Other

TR 32004
433.33 + ACS,
AUG, 1999

P.O.B.
X= 2,686,229.15
Y= 174,110.15



OFFICE OF MINERAL RESOURCES
DEPT. OF NATURAL RESOURCES
DO NOT REMOVE

2000' 2000' 2000 feet

SL 214

SL 3942

RISE R 20E

8 9 10 11 12 13 14

LOUTRE

WILDLIFE MANAGEMENT AREA

LOUTRE

PINAQUIMINES PARISH

CHENIERE

LOOMIE

CHENIERE

Light

Platform

Clubhouse

2000'

2000'

2000'

2000 feet