

TRACT 45338 - Webster Parish, Louisiana

All of the lands now or formerly constituting the beds and bottoms of all water bodies of every nature and description as to which title is vested in the State of Louisiana, together with all islands arising therein and other lands formed by accretion or by reliction, where allowed by law, excepting tax adjudicated lands, and not presently under mineral lease on July 8, 2020, situated in Webster Parish, Louisiana, and more particularly described as follows: Beginning at a point being the Northeast Corner of State Lease No. 19542, as amended, having Coordinates of X = 1,725,518.13 and Y = 645,970.86; thence North 00 degrees 04 minutes 26 seconds West 10,534.60 feet to a point having Coordinates of X = 1,725,504.55 and Y = 656,505.45; thence South 88 degrees 55 minutes 47 seconds East 15,689.64 feet to a point having Coordinates of X = 1,741,191.46 and Y = 656,212.38; thence South 00 degrees 16 minutes 10 seconds East 5,227.26 feet to a point having Coordinates of X = 1,741,216.03 and Y = 650,985.18; thence South 00 degrees 39 minutes 33 seconds West 5,310.17 feet to a point being the Northeast corner of State Lease No. 21901 having Coordinates of X = 1,741,154.94 and Y = 645,675.37; thence North 89 degrees 01 minutes 55 seconds West 5,441.86 feet along the boundary of said State Lease No. 21901 to a point being its Northwest corner having Coordinates of X = 1,735,713.86 and Y = 645,767.31, said point also being the Northeast corner of State Lease No. 21962; thence North 88 degrees 14 minutes 59 seconds West 5,036.34 feet along the boundary of said State Lease No. 21962 to a point having Coordinates of X = 1,730,679.86 and Y = 645,921.14; thence North 89 degrees 26 minutes 53 seconds West 5,161.97 feet to the point of beginning, (This tract includes only waterbottoms claimed and owned by the state and specifically excludes any land which the state or Wildlife and Fisheries may claim or own and to which the mineral rights are vested in them), containing approximately **1,307 acres**, all as more particularly outlined on a plat on file in the Office of Mineral Resources, Department of Natural Resources. All bearings, distances and coordinates are based on Louisiana Coordinate System of 1927, (North or South Zone), where applicable.

NOTE: The above description of the Tract nominated for lease has been provided and corrected, where required, exclusively by the nomination party. Any mineral lease selected from this Tract and awarded by the Louisiana State Mineral and Energy Board shall be without warranty of any kind, either express, implied, or statutory, including, but not limited to, the implied warranties of merchantability and fitness for a particular purpose. Should the mineral lease awarded by the Louisiana State Mineral and Energy Board be subsequently modified, cancelled or abrogated due to the existence of conflicting leases, operating agreements, private claims or other future obligations or conditions which may affect all or any portion of the leased Tract, it shall not relieve the Lessee of the obligation to pay any bonus due thereon to the Louisiana State Mineral and Energy Board, nor shall the Louisiana State Mineral and Energy Board be obligated to refund any consideration paid by the Lessor prior to such modification, cancellation, or abrogation, including, but not limited to, bonuses, rentals and royalties.

NOTE: Bidders are hereby advised that certain areas in Lake Bistineau are the subject of dual claims to mineral ownership or mineral rights to certain accreted lands by the federal government and, therefore, title to such accreted lands is in dispute. Any bids accepted by the state mineral board which result in a state mineral lease being given places the successful bidder on notice that the State's title to that acreage, whether the whole or a part of the lease awarded, may be challenged. Accordingly, all leases awarded by the state mineral board are without warranty of any kind, either express, implied, or statutory, including, but not limited to merchantability and fitness for a particular purpose. Should the awarded lease be subsequently modified, cancelled, or abrogated in any way as a result of the above mentioned or any other challenge, or conflicting private claims which affect or may affect all or any portion of the leased tract, the successful bidder/Lessee, their successors, or assigns shall not be relieved of the obligation to pay any monies due prior to the modification, cancellation, or abrogation, including, but not limited to, bonus, rental and royalty, nor shall the State be obligated to refund those monies paid.

Applicant: MCGINTY-DURHAM, INC.

Bidder	Cash Payment	Price/ Acre	Rental	Oil	Gas	Other

Legend



20070001

Active_Leases

0 2,500 Feet



WEBSTER



P.O.B.

SL 19542

SL 21962

SL 21901

LAKE BISTINEAU

TRACT 45339 - Webster Parish, Louisiana

All of the lands now or formerly constituting the beds and bottoms of all water bodies of every nature and description as to which title is vested in the State of Louisiana, together with all islands arising therein and other lands formed by accretion or by reliction, where allowed by law, excepting tax adjudicated lands, and not presently under mineral lease on July 8, 2020, situated in Webster Parish, Louisiana, and more particularly described as follows: Beginning at a point being the Northwest corner of State Lease No. 19542, as amended, having Coordinates of X = 1,720,157.16 and Y = 645,986.19; thence North 01 degrees 43 minutes 48 seconds West 5,206.18 feet to a point having Coordinates of X = 1,720,000.00 and Y = 651,190.00; thence East 5511.40 feet to a having Coordinates of X = 1,725,511.40 and Y = 651,190.00; thence South 00 degrees 04 minutes 26 seconds East 5,219.14 feet to a point being the Northwest corner of said State Lease No. 19542, as amended, having Coordinates of X = 1,725,518.13 and Y = 645,970.86; thence North 89 degrees 50 minutes 10 seconds West 5,360.99 feet to the point of beginning, (This tract includes only waterbottoms claimed and owned by the state and specifically excludes any land which the state or Wildlife and Fisheries may claim or own and to which the mineral rights are vested in them), **LESS AND EXCEPT** any right, title, and interest in lands owned by and not under lease from the State of Louisiana, on behalf of the Webster Parish School Board, situated in Section 16, Township 17 North, Range 10 West, Webster Parish, Louisiana, contained within the above described tract containing approximately **80 acres**, all as more particularly outlined on a plat on file in the Office of Mineral Resources, Department of Natural Resources. All bearings, distances and coordinates are based on Louisiana Coordinate System of 1927, (North or South Zone), where applicable.

NOTE: The above description of the Tract nominated for lease has been provided and corrected, where required, exclusively by the nomination party. Any mineral lease selected from this Tract and awarded by the Louisiana State Mineral and Energy Board shall be without warranty of any kind, either express, implied, or statutory, including, but not limited to, the implied warranties of merchantability and fitness for a particular purpose. Should the mineral lease awarded by the Louisiana State Mineral and Energy Board be subsequently modified, cancelled or abrogated due to the existence of conflicting leases, operating agreements, private claims or other future obligations or conditions which may affect all or any portion of the leased Tract, it shall not relieve the Lessee of the obligation to pay any bonus due thereon to the Louisiana State Mineral and Energy Board, nor shall the Louisiana State Mineral and Energy Board be obligated to refund any consideration paid by the Lessor prior to such modification, cancellation, or abrogation, including, but not limited to, bonuses, rentals and royalties.

NOTE: Bidders are hereby advised that certain areas in Lake Bistineau are the subject of dual claims to mineral ownership or mineral rights to certain accreted lands by the federal government and, therefore, title to such accreted lands is in dispute. Any bids accepted by the state mineral board which result in a state mineral lease being given places the successful

bidder on notice that the State's title to that acreage, whether the whole or a part of the lease awarded, may be challenged. Accordingly, all leases awarded by the state mineral board are without warranty of any kind, either express, implied, or statutory, including, but not limited to merchantability and fitness for a particular purpose. Should the awarded lease be subsequently modified, cancelled, or abrogated in any way as a result of the above mentioned or any other challenge, or conflicting private claims which affect or may affect all or any portion of the leased tract, the successful bidder/Lessee, their successors, or assigns shall not be relieved of the obligation to pay any monies due prior to the modification, cancellation, or abrogation, including, but not limited to, bonus, rental and royalty, nor shall the State be obligated to refund those monies paid.

Applicant: MCGINTY-DURHAM, INC.

Bidder	Cash Payment	Price/ Acre	Rental	Oil	Gas	Other

Legend

20070006

Active_Leases



0 2,000 Feet

WEBSTER

T17N - R10W



P.O.B.

SL 19542

LAKE BISTINEAU

TRACT 45340 - Webster Parish, Louisiana

All of the lands now or formerly constituting the beds and bottoms of all water bodies of every nature and description as to which title is vested in the State of Louisiana, together with all islands arising therein and other lands formed by accretion or by reliction, where allowed by law, excepting tax adjudicated lands, and not presently under mineral lease on July 8, 2020, situated in Webster Parish, Louisiana, and more particularly described as follows: Beginning at a point being the Northwest Corner of State Lease No. 21962 having Coordinates of X = 1,730,679.86 and Y = 645,921.14; thence along the boundary of said State Lease No. 21962 the following: South 01 degrees 21 minutes 41 seconds West 5,331.53 feet to a point having Coordinates of X = 1,730,553.19 and Y = 640,591.11 and South 00 degrees 27 minutes 40 seconds West 5,345.18 feet to a point having Coordinates of X = 1,730,510.17 and Y = 635,246.11; thence North 89 degrees 03 minutes 22 seconds West 5,077.08 feet to a point having Coordinates of X = 1,725,433.78 and Y = 635,329.74; thence North 89 degrees 03 minutes 23 seconds West 4,934.45 feet to a point being the Northeast corner of State Lease 18181, as amended, having Coordinates of X = 1,720,500.00 and Y = 635,411.01, said point also being the Southeast corner of State Lease 16531, as amended; thence North 5,276.53 feet along the boundary of said State Lease No. 16531, as amended, to a point having Coordinates of X = 1,720,500.00 and Y = 640,687.54, said point being a Southwest corner of State Lease No. 19542, as amended; thence along the boundary of said State Lease No. 19542, as amended, the following: North 89 degrees 57 minutes 41 seconds East 4,994.99 feet to a point having Coordinates of X = 1,725,494.99 and Y = 640,690.91 and North 00 degrees 15 minutes 04 seconds East 5,280 feet to a point having Coordinates of X = 1,725,518.13 and Y = 645,970.86; thence South 89 degrees 26 minutes 53 seconds East 5161.97 feet to the point of beginning, (This tract includes only waterbottoms claimed and owned by the state and specifically excludes any land which the state or Wildlife and Fisheries may claim or own and to which the mineral rights are vested in them), containing approximately **511 acres**, all as more particularly outlined on a plat on file in the Office of Mineral Resources, Department of Natural Resources. All bearings, distances and coordinates are based on Louisiana Coordinate System of 1927, (North or South Zone), where applicable.

NOTE: The above description of the Tract nominated for lease has been provided and corrected, where required, exclusively by the nomination party. Any mineral lease selected from this Tract and awarded by the Louisiana State Mineral and Energy Board shall be without warranty of any kind, either express, implied, or statutory, including, but not limited to, the implied warranties of merchantability and fitness for a particular purpose. Should the mineral lease awarded by the Louisiana State Mineral and Energy Board be subsequently modified, cancelled or abrogated due to the existence of conflicting leases, operating agreements, private claims or other future obligations or conditions which may affect all or any portion of the leased Tract, it shall not relieve the Lessee of the obligation to pay any bonus due thereon to the Louisiana State Mineral and Energy Board, nor shall the Louisiana State Mineral and Energy Board be obligated to refund any

consideration paid by the Lessor prior to such modification, cancellation, or abrogation, including, but not limited to, bonuses, rentals and royalties.

NOTE: Bidders are hereby advised that certain areas in Lake Bistineau are the subject of dual claims to mineral ownership or mineral rights to certain accreted lands by the federal government and, therefore, title to such accreted lands is in dispute. Any bids accepted by the state mineral board which result in a state mineral lease being given places the successful bidder on notice that the State's title to that acreage, whether the whole or a part of the lease awarded, may be challenged. Accordingly, all leases awarded by the state mineral board are without warranty of any kind, either express, implied, or statutory, including, but not limited to merchantability and fitness for a particular purpose. Should the awarded lease be subsequently modified, cancelled, or abrogated in any way as a result of the above mentioned or any other challenge, or conflicting private claims which affect or may affect all or any portion of the leased tract, the successful bidder/Lessee, their successors, or assigns shall not be relieved of the obligation to pay any monies due prior to the modification, cancellation, or abrogation, including, but not limited to, bonus, rental and royalty, nor shall the State be obligated to refund those monies paid.

Applicant: MCGINTY-DURHAM, INC.

Bidder	Cash Payment	Price/ Acre	Rental	Oil	Gas	Other

Legend

- 20070002
- Active_Leases
- Counties

WEBSTER

P.O.B.

LAKE BISTINEAU

BIENVILLE

SL 21963

SL 21962

BOSSIER

T17N - R10W

SL 19542

SL 16531

0 1,980 Feet



TRACT 45341 - Bienville Bossier and Webster Parishes, Louisiana

All of the lands now or formerly constituting the beds and bottoms of all water bodies of every nature and description as to which title is vested in the State of Louisiana, together with all islands arising therein and other lands formed by accretion or by reliction, where allowed by law, excepting tax adjudicated lands, and not presently under mineral lease on July 8, 2020, situated in Bienville Bossier and Webster Parishes, Louisiana, and more particularly described as follows: Beginning at a point being the Southeast Corner of State Lease No. 18181, as amended, having Coordinates of X = 1,719,781.27 and Y = 629,934.28; thence North 06 degrees 47 minutes 36 seconds East 3,403.33 feet along the East line of said State Lease No. 18181, as amended, to a point having Coordinates of X = 1,720,183.85 and Y = 633,313.72; thence North 00 degrees 17 minutes 43 seconds East 2,092.48 feet along the East line of said State Lease No. 18181, as amended, to its Northeast Corner having Coordinates of X = 1,720,194.63 and Y = 635,406.17; thence North 89 degrees 27 minutes 06 seconds West 1,590.68 feet along the North line of said State Lease No. 18181, as amended, to its intersection with the South line of State Lease No. 16531, as amended, having Coordinates of X = 1,718,604.02 and Y = 635,421.39; thence South 89 degrees 41 minutes 11 seconds East 1,508.58 feet along the South line of said State Lease No. 16531, as amended, to a point having Coordinates of X = 1,720,112.58 and Y = 635,413.13; thence South 89 degrees 41 minutes 11 seconds East 387.43 feet along the South line of said State Lease No. 16531, as amended, to a point being its Southeast Corner having Coordinates of X = 1,720,500.00 and Y = 635,411.01; thence South 89 degrees 03 minutes 23 seconds East 10,011.53 feet to a point being the Northwest corner of State Lease No. 21963 having Coordinates of X = 1,730,510.17 and Y = 635,246.11; thence South 89 degrees 03 minutes 43 seconds East 74.66 feet to a point X = 1,730,584.82 and Y = 635,244.89; thence South 01 degrees 25 minutes 55 seconds West 5,395.38 feet along the boundary of said State Lease No. 21963 to its Southwest Corner having Coordinates of X = 1,730,450.00 and Y = 629,851.19; thence North 89 degrees 07 minutes 30 seconds West 1323.48 feet to a point having coordinates of X = 1,729,126.67 and Y = 629,871.40; thence North 89 degrees 25 minutes 58 seconds West 3983.86 feet to the Northwest corner of State Lease 20273, having coordinates of X = 1,725,143.01 and Y = 629,910.84; thence North 89 degrees 44 minutes 58 seconds West 5261.79 feet to the point of beginning, (This tract includes only waterbottoms claimed and owned by the state and specifically excludes any land which the state may claim or own and to which the mineral rights are vested in the state), containing approximately **630 acres**, all as more particularly outlined on a plat on file in the Office of Mineral Resources, Department of Natural Resources. All bearings, distances and coordinates are based on Louisiana Coordinate System of 1927, (North or South Zone), where applicable.

NOTE: The above description of the Tract nominated for lease has been provided and corrected, where required, exclusively by the nomination party. Any mineral lease selected from this Tract and awarded by the Louisiana State Mineral and Energy Board shall be without warranty of any kind, either express, implied, or statutory, including, but not limited to, the implied

warranties of merchantability and fitness for a particular purpose. Should the mineral lease awarded by the Louisiana State Mineral and Energy Board be subsequently modified, cancelled or abrogated due to the existence of conflicting leases, operating agreements, private claims or other future obligations or conditions which may affect all or any portion of the leased Tract, it shall not relieve the Lessee of the obligation to pay any bonus due thereon to the Louisiana State Mineral and Energy Board, nor shall the Louisiana State Mineral and Energy Board be obligated to refund any consideration paid by the Lessor prior to such modification, cancellation, or abrogation, including, but not limited to, bonuses, rentals and royalties.

NOTE: This tract encompasses an area beneath which is located on the Bistineau Gas Storage Pool in the Sligo formation of the Pettet Porosity. Accordingly, any mineral related activity, including, but not limited to, the exploration and drilling for, and the production and storage of oil, gas and other liquid or gaseous minerals, conducted under a valid mineral lease which may be obtained from the State, shall be subject to any statewide orders issued by the Louisiana Office of Conservation pertinent to conducting such operations in this area and upon this tract, including particularly, but not limited to, the following: Order Nos. 287, 287-A, 287-A-1, 287-B, Supplement to 287-B, 287-B-1, 287-B-2, 287-B-3, and 287-B-4. The successful bidder on this tract shall contact the operator of the Bistineau Gas Storage Pool and the Office of Conservation prior to initiating and conducting any of the aforementioned activity hereon.

NOTE: Bidders are hereby advised that certain areas in Lake Bistineau are the subject of dual claims to mineral ownership or mineral rights to certain accreted lands by the federal government and, therefore, title to such accreted lands is in dispute. Any bids accepted by the state mineral board which result in a state mineral lease being given places the successful bidder on notice that the State's title to that acreage, whether the whole or a part of the lease awarded, may be challenged. Accordingly, all leases awarded by the state mineral board are without warranty of any kind, either express, implied, or statutory, including, but not limited to merchantability and fitness for a particular purpose. Should the awarded lease be subsequently modified, cancelled, or abrogated in any way as a result of the above mentioned or any other challenge, or conflicting private claims which affect or may affect all or any portion of the leased tract, the successful bidder/Lessee, their successors, or assigns shall not be relieved of the obligation to pay any monies due prior to the modification, cancellation, or abrogation, including, but not limited to, bonus, rental and royalty, nor shall the State be obligated to refund those monies paid.

Applicant: MCGINTY-DURHAM, INC.

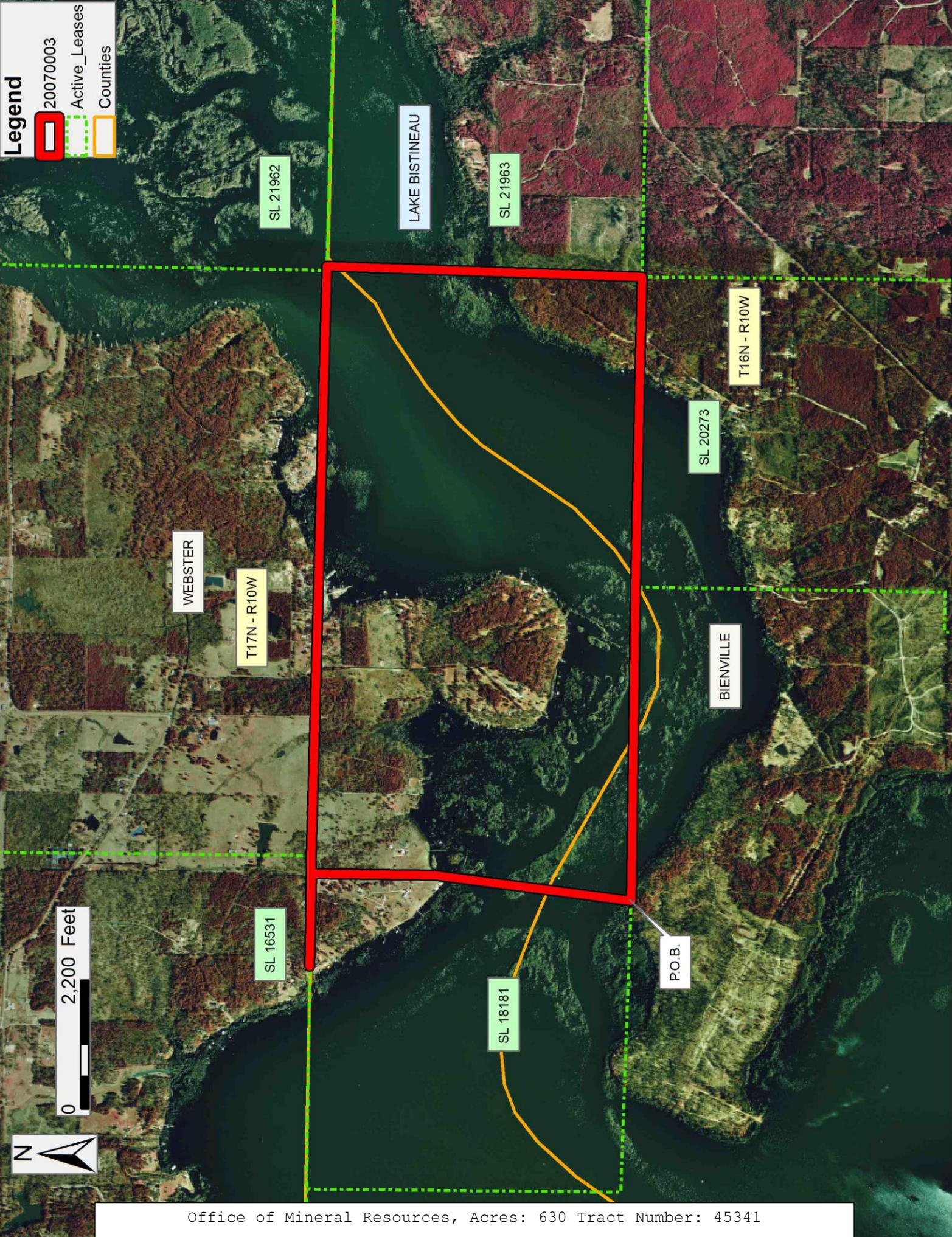
Bidder	Cash Payment	Price/ Acre	Rental	Oil	Gas	Other

Legend

20070003

Active_Leases

Counties



TRACT 45342 - Bienville and Bossier Parishes, Louisiana

All of the lands now or formerly constituting the beds and bottoms of all water bodies of every nature and description as to which title is vested in the State of Louisiana, together with all islands arising therein and other lands formed by accretion or by reliction, where allowed by law, excepting tax adjudicated lands, and not presently under mineral lease on July 8, 2020, situated in Bienville and Bossier Parishes, Louisiana, and more particularly described as follows: Beginning at a point being the Northwest Corner of State Lease No. 20273, as amended, having Coordinates of X = 1,725,143.01 and Y = 629,910.84; thence South 00 degrees 20 minutes 43 seconds West 5,295.39 feet along the West line of said State Lease No. 20273, as amended, to a point having Coordinates of X = 1,725,111.09 and Y = 624,615.55; thence North 89 degrees 30 minutes 11 seconds West 681.12 feet along said State Lease No. 20273, as amended, to a point having Coordinates of X = 1,724,430.00 and Y = 624,621.46; thence South 221.46 feet along said State Lease No. 20273, as amended, to its Southwest Corner having Coordinates of X = 1,724,430.00 and Y = 624,400.00; thence East 670.00 feet along the South line of said State Lease No. 20273, as amended, to a point being the Northwest Corner of State Lease No. 20234 having Coordinates of X = 1,725,100.00 and Y = 624,400.00; thence South 4,750.00 feet along the West line of said State Lease No. 20234 to its intersection with State Lease No. 20355, as amended, having Coordinates of X = 1,725,100.00 and Y = 619,650.00; thence West 325.00 feet along said State Lease No. 20355, as amended, to a point having Coordinates of X = 1,724,775.00 and Y = 619,650.00; thence South 304.54 feet along said State Lease No. 20355, as amended, to a point having Coordinates of X = 1,724,775.00 and Y = 619,345.46; thence South 88 degrees 14 minutes 20 seconds East 275.26 feet along the said State Lease No. 20355, as amended, to a point having Coordinates of X = 1,725,050.13 and Y = 619,337.00; thence South 00 degrees 22 minutes 00 seconds West 5,323.81 feet along the West line of said State Lease No. 20355, as amended, to a point having Coordinates of X = 1,725,016.06 and Y = 614,013.30; thence North 89 degrees 17 minutes 06 seconds West 953.70 feet along said State Lease No. 20355, as amended, to a point having Coordinates of X = 1,724,062.44 and Y = 614,025.20; thence North 87 degrees 58 minutes 57 seconds West 4,191.26 feet along said State Lease No. 20355, as amended, to a point being the Northeast Corner of State Lease No. 20337 having Coordinates of X = 1,719,873.78 and Y = 614,172.76; thence North 89 degrees 39 minutes 21 seconds West 38.63 feet along the North line of said State Lease No. 20337 to the Southeast Corner of State Lease No. 20355, as amended, having Coordinates of X = 1,719,835.15 and Y = 614,172.99; thence North 00 degrees 36 minutes 59 seconds East 305.83 feet along the East line of said State Lease No. 20355, as amended, to its Northeast Corner having Coordinates of X = 1,719,838.44 and Y = 614,478.80; thence East 49.29 feet to the East line of State Lease No. 20619 having Coordinates of X = 1,719,887.73 and Y = 614,478.80; thence North 10,230.00 feet along the East line of said State Lease No. 20619 to its Northeast Corner having Coordinates of X = 1,719,887.73 and Y = 624,708.80; thence West 5,015.70 feet along the North line of said State Lease No. 20619 to its intersection with the East line of State Lease No. 18096, as amended, being the Northwest Corner of said State Lease No. 20619 having Coordinates of X

= 1,714,872.03 and Y = 624,708.80; thence North 5,211.20 feet along the East line of State Lease No. 18096, as amended, to its Northeast Corner having Coordinates of X = 1,714,872.03 and Y = 629,920.00; thence North 144.10 feet to a point on the South line of State Lease No. 18181, as amended, having Coordinates of X = 1,714,872.03 and Y = 630,064.10; thence South 88 degrees 29 minutes 07 seconds East 4,910.97 feet along the South line of said State Lease No. 18181, as amended, to its Southeast Corner having Coordinates of X = 1,719,781.28 and Y = 629,934.28; thence South 89 degrees 44 minutes 58 seconds East 5,361.78 back to the point of beginning, **LESS AND EXCEPT** any right, title, and interest in lands owned by and not under lease from the State of Louisiana, on behalf of the Bienville and Bossier Parish School Boards, situated in Section 16, Township 16 North, Range 10 West, Bienville and Bossier Parishes, Louisiana, contained within the above described tract, (This tract includes only waterbottoms claimed and owned by the state and specifically excludes any land which the state may claim or own and to which the mineral rights are vested in the state), containing approximately **1,655 acres**, all as more particularly outlined on a plat on file in the Office of Mineral Resources, Department of Natural Resources. All bearings, distances and coordinates are based on Louisiana Coordinate System of 1927, (North or South Zone), where applicable.

NOTE: The above description of the Tract nominated for lease has been provided and corrected, where required, exclusively by the nomination party. Any mineral lease selected from this Tract and awarded by the Louisiana State Mineral and Energy Board shall be without warranty of any kind, either express, implied, or statutory, including, but not limited to, the implied warranties of merchantability and fitness for a particular purpose. Should the mineral lease awarded by the Louisiana State Mineral and Energy Board be subsequently modified, cancelled or abrogated due to the existence of conflicting leases, operating agreements, private claims or other future obligations or conditions which may affect all or any portion of the leased Tract, it shall not relieve the Lessee of the obligation to pay any bonus due thereon to the Louisiana State Mineral and Energy Board, nor shall the Louisiana State Mineral and Energy Board be obligated to refund any consideration paid by the Lessor prior to such modification, cancellation, or abrogation, including, but not limited to, bonuses, rentals and royalties.

NOTE: This tract encompasses an area beneath which is located on the Bistineau Gas Storage Pool in the Sligo formation of the Pettet Porosity. Accordingly, any mineral related activity, including, but not limited to, the exploration and drilling for, and the production and storage of oil, gas and other liquid or gaseous minerals, conducted under a valid mineral lease which may be obtained from the State, shall be subject to any statewide orders issued by the Louisiana Office of Conservation pertinent to conducting such operations in this area and upon this tract, including particularly, but not limited to, the following: Order Nos. 287, 287-A, 287-A-1, 287-B, Supplement to 287-B, 287-B-1, 287-B-2, 287-B-3, and 287-B-4. The successful bidder on this tract shall contact the operator of the Bistineau Gas Storage

Pool and the Office of Conservation prior to initiating and conducting any of the aforementioned activity hereon.

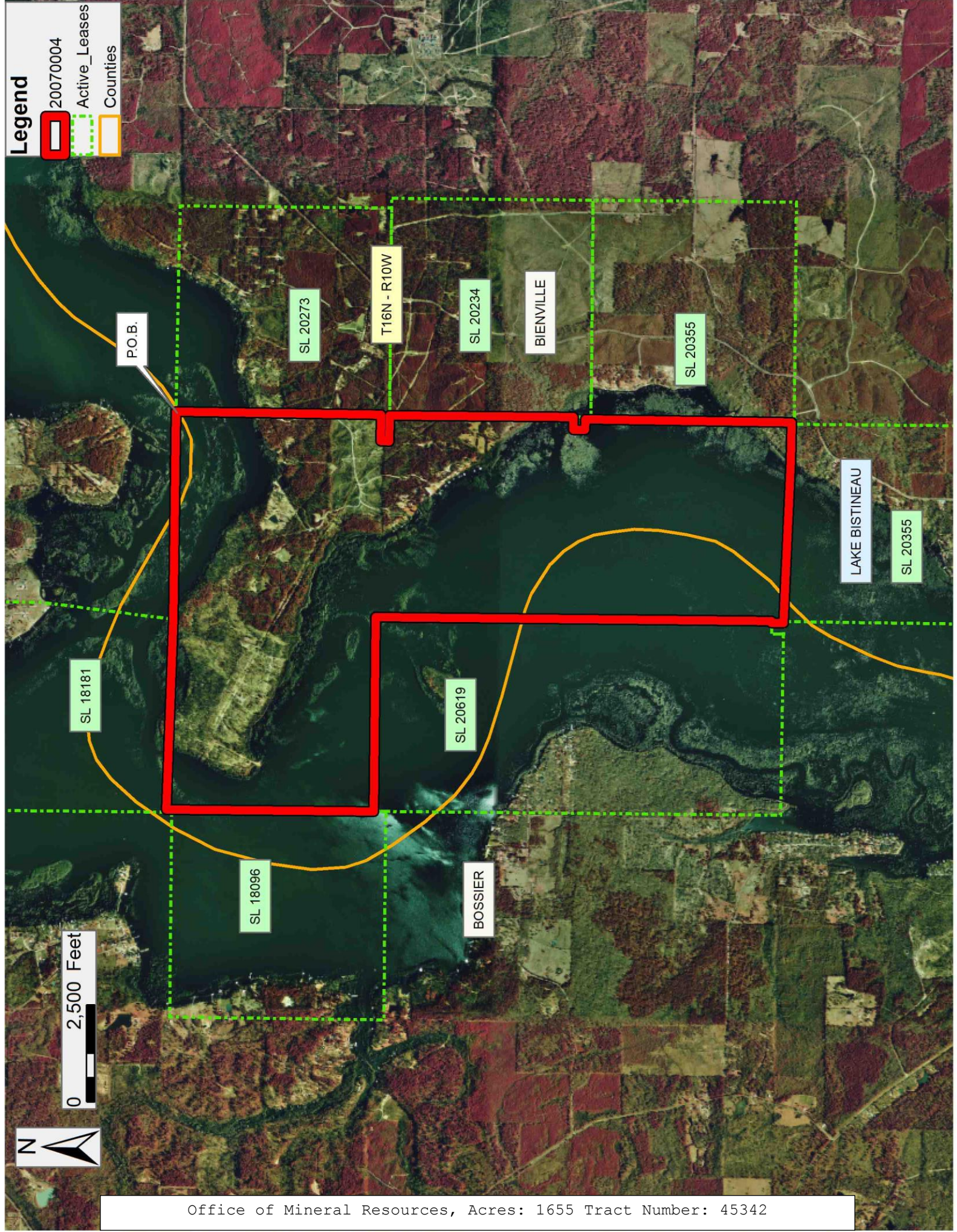
NOTE: Bidders are hereby advised that certain areas in Lake Bistineau are the subject of dual claims to mineral ownership or mineral rights to certain accreted lands by the federal government and, therefore, title to such accreted lands is in dispute. Any bids accepted by the state mineral board which result in a state mineral lease being given places the successful bidder on notice that the State's title to that acreage, whether the whole or a part of the lease awarded, may be challenged. Accordingly, all leases awarded by the state mineral board are without warranty of any kind, either express, implied, or statutory, including, but not limited to merchantability and fitness for a particular purpose. Should the awarded lease be subsequently modified, cancelled, or abrogated in any way as a result of the above mentioned or any other challenge, or conflicting private claims which affect or may affect all or any portion of the leased tract, the successful bidder/Lessee, their successors, or assigns shall not be relieved of the obligation to pay any monies due prior to the modification, cancellation, or abrogation, including, but not limited to, bonus, rental and royalty, nor shall the State be obligated to refund those monies paid.

Applicant: MCGINTY-DURHAM, INC.

Bidder	Cash Payment	Price/ Acre	Rental	Oil	Gas	Other

Legend

- 20070004
- Active_Leases
- Counties



TRACT 45343 - Bienville and Bossier Parishes, Louisiana

All of the lands now or formerly constituting the beds and bottoms of all water bodies of every nature and description as to which title is vested in the State of Louisiana, together with all islands arising therein and other lands formed by accretion or by reliction, where allowed by law, excepting tax adjudicated lands, and not presently under mineral lease on July 8, 2020, situated in Bienville and Bossier Parishes, Louisiana, and more particularly described as follows: Beginning at a point having Coordinates of and X = 1,724,969.33 and Y = 608,738.55, said point being the Southeast corner of State Lease No. 20355, as amended; thence South 5,264.07 feet to a point being the Northeast corner of State Lease No. 20620 having Coordinates of X = 1,724,969.33 and Y = 603,474.48; thence West 7,576.38 feet along the North line of said State Lease No. 20620 to a point being its Northwest corner having Coordinates of X = 1,717,392.95 and Y = 603,474.48, said point also being the Northeast corner of State Lease No. 19760; thence West 2,904.86 feet along the North line of said State Lease No. 19760 to a point having Coordinates of X = 1,714,488.09 and Y = 603,474.48; thence North 01 degrees 12 minutes 55 seconds East 5,475.48 feet to a point having Coordinates of X = 1,714,604.23 and Y = 608,948.73; thence South 88 degrees 47 minutes 05 seconds East 2,616.32 feet to a point being the Southwest Corner of State Lease No. 20337 having Coordinates of X = 1,717,219.96 and Y = 608,893.24; thence South 88 degrees 47 minutes 04 seconds East 2,328.29 feet along the South line of said State Lease No. 20337 to a point being a Southeast corner of said State Lease No. 20355, as amended, having Coordinates of X = 1,719,547.73 and Y = 608,843.85; thence along the boundary of said State Lease No. 20355 the following: South 53.28 feet to a point being its Southwest corner having Coordinates of X = 1,719,547.73 and Y = 608,790.57, South 86 degrees 43 minutes 27 seconds East 242.35 feet to a point having Coordinates of X = 1,719,789.68 and Y = 608,776.72, and South 89 degrees 34 minutes 40 seconds East 5,179.79 feet to the point of beginning, **LESS AND EXCEPT** any portion of State Lease No. 19787 that may fall within the above described tract, (This tract includes only waterbottoms claimed and owned by the state and specifically excludes any land which the state or Wildlife and Fisheries may claim or own and to which the mineral rights are vested in them), containing approximately **646 acres**, all as more particularly outlined on a plat on file in the Office of Mineral Resources, Department of Natural Resources. All bearings, distances and coordinates are based on Louisiana Coordinate System of 1927, (North or South Zone), where applicable.

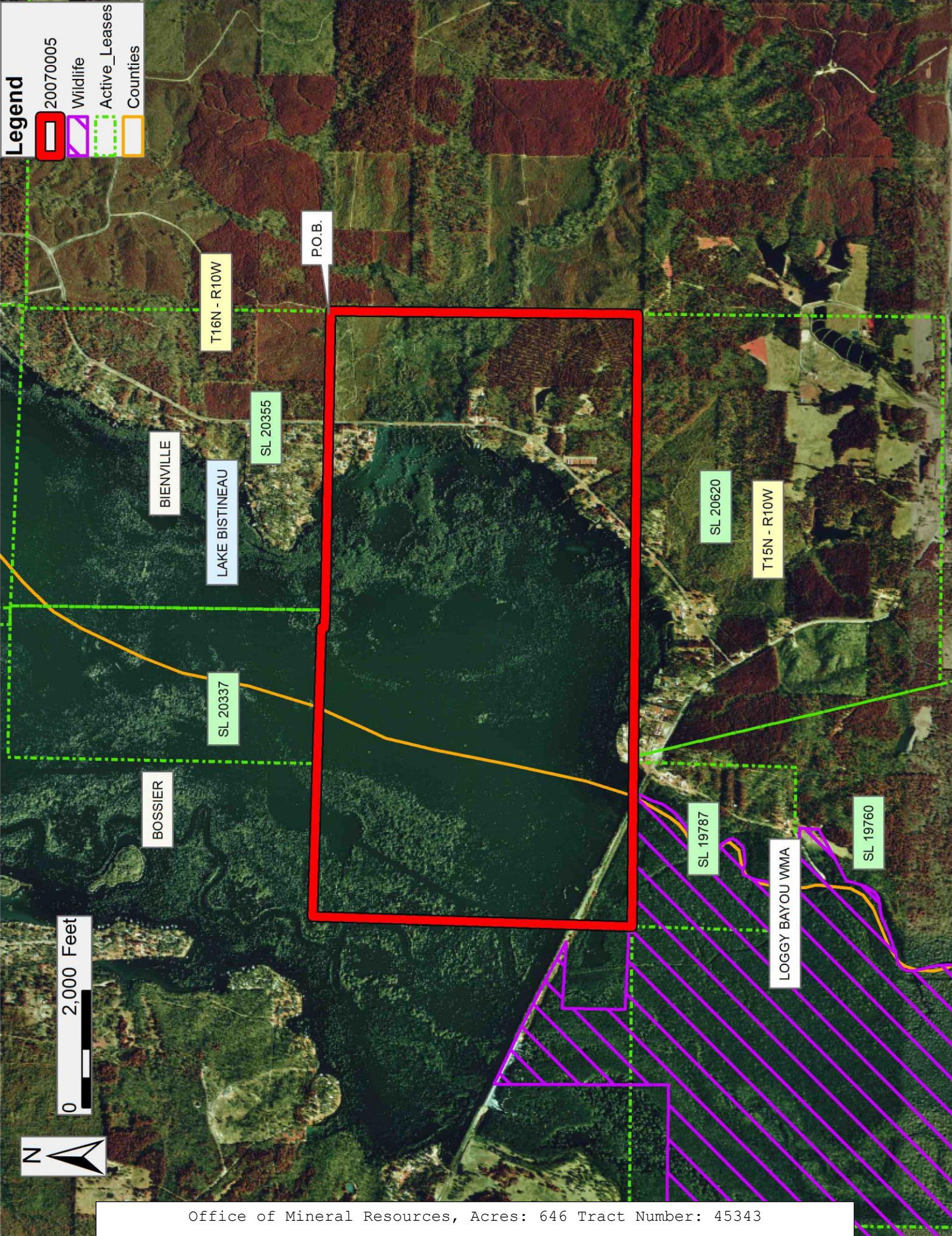
NOTE: The above description of the Tract nominated for lease has been provided and corrected, where required, exclusively by the nomination party. Any mineral lease selected from this Tract and awarded by the Louisiana State Mineral and Energy Board shall be without warranty of any kind, either express, implied, or statutory, including, but not limited to, the implied warranties of merchantability and fitness for a particular purpose. Should the mineral lease awarded by the Louisiana State Mineral and Energy Board be subsequently modified, cancelled or abrogated due to the existence of conflicting leases, operating agreements, private claims or other future obligations or conditions which may affect all or any portion of the leased

Tract, it shall not relieve the Lessee of the obligation to pay any bonus due thereon to the Louisiana State Mineral and Energy Board, nor shall the Louisiana State Mineral and Energy Board be obligated to refund any consideration paid by the Lessor prior to such modification, cancellation, or abrogation, including, but not limited to, bonuses, rentals and royalties.

NOTE: Bidders are hereby advised that certain areas in Lake Bistineau are the subject of dual claims to mineral ownership or mineral rights to certain accreted lands by the federal government and, therefore, title to such accreted lands is in dispute. Any bids accepted by the state mineral board which result in a state mineral lease being given places the successful bidder on notice that the State's title to that acreage, whether the whole or a part of the lease awarded, may be challenged. Accordingly, all leases awarded by the state mineral board are without warranty of any kind, either express, implied, or statutory, including, but not limited to merchantability and fitness for a particular purpose. Should the awarded lease be subsequently modified, cancelled, or abrogated in any way as a result of the above mentioned or any other challenge, or conflicting private claims which affect or may affect all or any portion of the leased tract, the successful bidder/Lessee, their successors, or assigns shall not be relieved of the obligation to pay any monies due prior to the modification, cancellation, or abrogation, including, but not limited to, bonus, rental and royalty, nor shall the State be obligated to refund those monies paid.

Applicant: MCGINTY-DURHAM, INC.

Bidder	Cash Payment	Price/ Acre	Rental	Oil	Gas	Other



TRACT 45344 - De Soto and Natchitoches Parishes, Louisiana

All of the lands now or formerly constituting the beds and bottoms of all water bodies of every nature and description as to which title is vested in the State of Louisiana, together with all islands arising therein and other lands formed by accretion or by reliction, where allowed by law, excepting tax adjudicated lands, and not presently under mineral lease on July 8, 2020, situated in De Soto and Natchitoches Parishes, Louisiana, and more particularly described as follows: Beginning at a point having Coordinates of X = 1,724,063.77 and Y = 461,701.65; thence South 89 degrees 37 minutes 57 seconds East 4,936.34 feet to the Southwest corner of State Lease No. 20424 having Coordinates of X = 1,729,000.00 and Y = 461,670.00; thence East 545.52 feet along the Southern boundary of said State Lease No. 20424, to a point having Coordinates of X = 1,729,545.52 and Y = 461,670.00; thence South 10,897.45 feet to a point having Coordinates of X = 1,729,545.52 and Y = 450,772.55; thence West 10,747.63 feet to a point having Coordinates of X = 1,718,797.89 and Y = 450,772.55; thence North 01 degrees 05 minutes 04 seconds West 5,540.80 feet to a point having Coordinates of X = 1,718,693.03 and Y = 456,312.36; thence South 89 degrees 07 minutes 46 seconds East 5,383.03 feet to a point having Coordinates of X = 1,724,075.44 and Y = 456,230.57; thence North 00 degrees 07 minutes 20 seconds West 5,471.09 feet to the point of beginning, (This lease includes only waterbottoms claimed and owned by the state and specifically excludes any land which the state may claim or own and to which the mineral rights are vested in the state), containing approximately **27 acres**, all as more particularly outlined on a plat on file in the Office of Mineral Resources, Department of Natural Resources. All bearings, distances and coordinates are based on Louisiana Coordinate System of 1927, (North or South Zone), where applicable.

NOTE: The above description of the Tract nominated for lease has been provided and corrected, where required, exclusively by the nomination party. Any mineral lease selected from this Tract and awarded by the Louisiana State Mineral and Energy Board shall be without warranty of any kind, either express, implied, or statutory, including, but not limited to, the implied warranties of merchantability and fitness for a particular purpose. Should the mineral lease awarded by the Louisiana State Mineral and Energy Board be subsequently modified, cancelled or abrogated due to the existence of conflicting leases, operating agreements, private claims or other future obligations or conditions which may affect all or any portion of the leased Tract, it shall not relieve the Lessee of the obligation to pay any bonus due thereon to the Louisiana State Mineral and Energy Board, nor shall the Louisiana State Mineral and Energy Board be obligated to refund any consideration paid by the Lessor prior to such modification, cancellation, or abrogation, including, but not limited to, bonuses, rentals and royalties.

Applicant: CYPRESS ENERGY CORPORATION

Bidder	Cash Payment	Price/ Acre	Rental	Oil	Gas	Other

Legend

- 20070008
- Active_Leases
- Counties

