

TRACT 45169 - Red River Parish, Louisiana

All of the lands now or formerly constituting the beds and bottoms of all water bodies of every nature and description as to which title is vested in the State of Louisiana, together with all islands arising therein and other lands formed by accretion or by reliction, where allowed by law, excepting tax adjudicated lands, and not presently under mineral lease on July 10, 2019, situated in Red River Parish, Louisiana, and more particularly described as follows: Beginning at a point on the North boundary of State Lease No. 19693 having Coordinates of X = 1,750,887.07 and Y = 570,404.43; thence East 5,304.32 feet to a point on said boundary of State Lease No. 19693 having Coordinates of X = 1,756,191.39 and Y = 570,404.43; thence along the boundary of said State Lease No. 19693 the following: South 00 degrees 04 minutes 30 seconds East 4,155.08 feet to a point having Coordinates of X = 1,756,196.82 and Y = 566,249.35, North 89 degrees 16 minutes 11 seconds West 5,324.56 feet to a point having Coordinates of X = 1,750,872.70 and Y = 566,317.22, and North 00 degrees 12 minutes 05 seconds East 4,087.24 feet to the point of beginning, containing approximately **7 acres**, all as more particularly outlined on a plat on file in the Office of Mineral Resources, Department of Natural Resources. All bearings, distances and coordinates are based on Louisiana Coordinate System of 1927, (North or South Zone), where applicable.

NOTE: The above description of the Tract nominated for lease has been provided and corrected, where required, exclusively by the nomination party. Any mineral lease selected from this Tract and awarded by the Louisiana State Mineral and Energy Board shall be without warranty of any kind, either express, implied, or statutory, including, but not limited to, the implied warranties of merchantability and fitness for a particular purpose. Should the mineral lease awarded by the Louisiana State Mineral and Energy Board be subsequently modified, cancelled or abrogated due to the existence of conflicting leases, operating agreements, private claims or other future obligations or conditions which may affect all or any portion of the leased Tract, it shall not relieve the Lessee of the obligation to pay any bonus due thereon to the Louisiana State Mineral and Energy Board, nor shall the Louisiana State Mineral and Energy Board be obligated to refund any consideration paid by the Lessor prior to such modification, cancellation, or abrogation, including, but not limited to, bonuses, rentals and royalties.

NOTE: The Office of Mineral Resources will require a minimum royalty of 25%.

Applicant: STAFF OFFICE OF MINERAL RESOURCES

Bidder	Cash Payment	Price/ Acre	Rental	Oil	Gas	Other



0 1,000 Feet

BIENVILLE

RED RIVER

T14N - R9W




P.O.B.

SL 19692

SL 19693

GRAND BAYOU

Legend

-  19070016
-  Active_Leases
-  Counties

TRACT 45170 - De Soto and Red River Parishes, Louisiana

All of the lands now or formerly constituting the beds and bottoms of all water bodies of every nature and description as to which title is vested in the State of Louisiana, together with all islands arising therein and other lands formed by accretion or by reliction, where allowed by law, excepting tax adjudicated lands, and not presently under mineral lease on July 10, 2019, situated in De Soto and Red River Parishes, Louisiana, and more particularly described as follows: Beginning at the Northwest corner of the HA RB SUFF created by the Louisiana Office of Conversation Order No. 109-X-33 for Red River Bull Bayou Field having Coordinates of X = 1,708,482.08 and Y = 482,804.73, said point also being a point on State Lease No. 20156, as amended; thence along the boundary of said HA RB SUFF and said State Lease No. 20156, as amended, the following courses: South 89 degrees 32 minutes 52 seconds East 5,278.90 feet to a point having Coordinates of X = 1,713,760.81 and Y = 482,763.07, South 00 degrees 24 minutes 41 seconds West 5,304.53 feet to a point having Coordinates of X = 1,713,722.73 and Y = 477,458.68, and North 89 degrees 22 minutes 00 seconds West 3,222.93 feet to a point also being on the East line of State Lease No. 15500 having Coordinates of X = 1,710,500.00 and Y = 477,494.31; thence along the boundary of said HA RB SUFF and said State Lease No. 15500 the following courses: North 105.69 feet to a point having Coordinates of X = 1,710,500.00 and Y = 477,600.00 and West 2,071.07 feet to a point on the West boundary of said HA RB SUFF and said State Lease No. 20156, as amended, having Coordinates of X = 1,708,428.93 and Y = 477,600.00; thence North 00 degrees 35 minutes 06 seconds East 5,205.00 feet along the West boundary of said HA RB SUFF and said State Lease No. 20156, as amended, to the point of beginning, containing approximately **36.183 acres**, all as more particularly outlined on a plat on file in the Office of Mineral Resources, Department of Natural Resources. All bearings, distances and coordinates are based on Louisiana Coordinate System of 1927, (North or South Zone), where applicable.

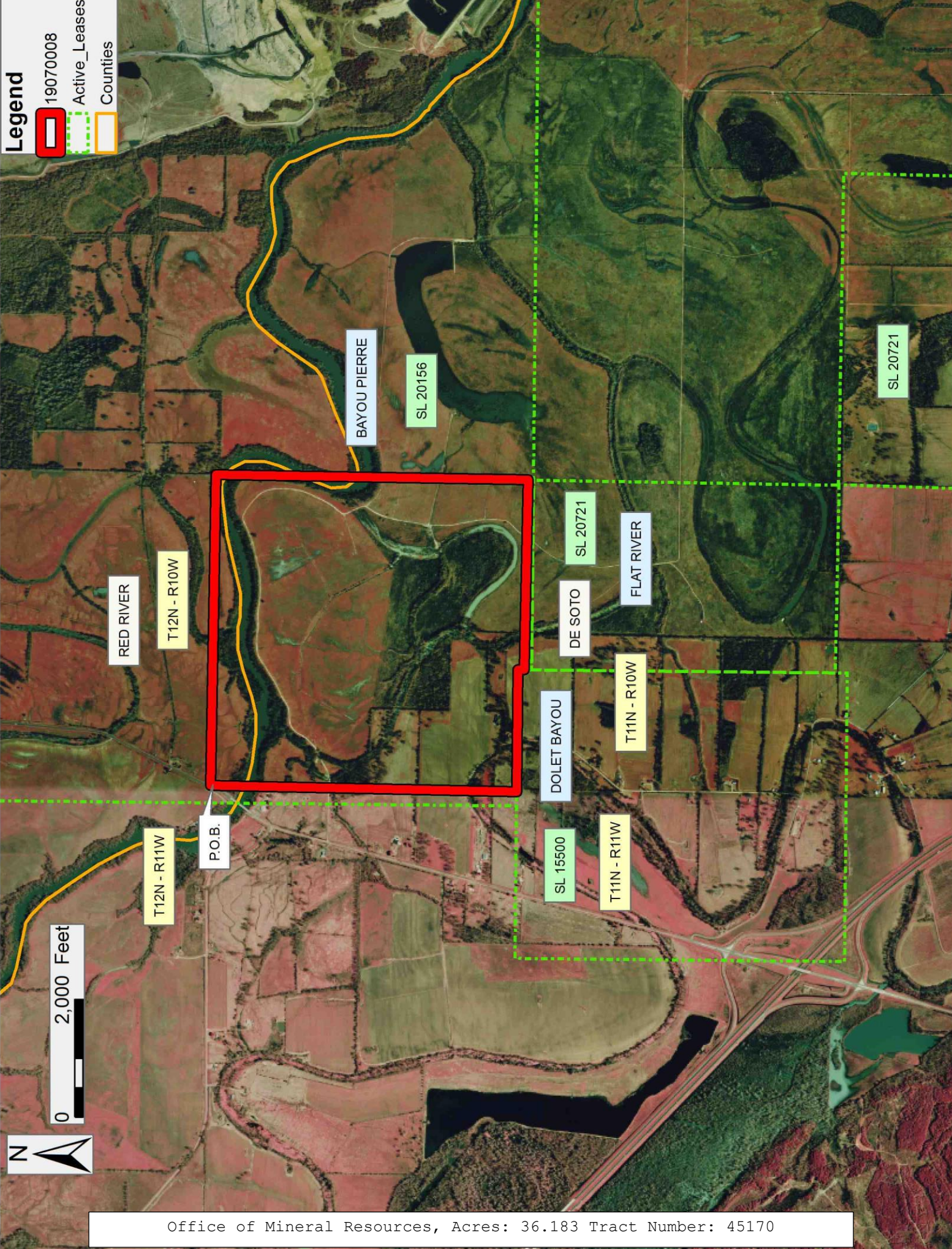
NOTE: The above description of the Tract nominated for lease has been provided and corrected, where required, exclusively by the nomination party. Any mineral lease selected from this Tract and awarded by the Louisiana State Mineral and Energy Board shall be without warranty of any kind, either express, implied, or statutory, including, but not limited to, the implied warranties of merchantability and fitness for a particular purpose. Should the mineral lease awarded by the Louisiana State Mineral and Energy Board be subsequently modified, cancelled or abrogated due to the existence of conflicting leases, operating agreements, private claims or other future obligations or conditions which may affect all or any portion of the leased Tract, it shall not relieve the Lessee of the obligation to pay any bonus due thereon to the Louisiana State Mineral and Energy Board, nor shall the Louisiana State Mineral and Energy Board be obligated to refund any consideration paid by the Lessor prior to such modification, cancellation, or abrogation, including, but not limited to, bonuses, rentals and royalties.

Applicant: ELI OIL & GAS

Bidder	Cash Payment	Price/Acre	Rental	Oil	Gas	Other

Legend

- 19070008
- Active_Leases
- Counties



0 2,000 Feet



Office of Mineral Resources, Acres: 36.183 Tract Number: 45170

TRACT 45171 - De Soto Parish, Louisiana

All of the lands now or formerly constituting the beds and bottoms of all water bodies of every nature and description as to which title is vested in the State of Louisiana, together with all islands arising therein and other lands formed by accretion or by reliction, where allowed by law, excepting tax adjudicated lands, and not presently under mineral lease on July 10, 2019, situated in De Soto Parish, Louisiana, and more particularly described as follows: Beginning at a point being the Northernmost Northeast corner of State Lease No. 20721 Tract A, as amended, having Coordinates of X = 1,713,722.08 and Y = 477,365.00, said point also being a point on the Southern border of State Lease No. 20156, as amended; thence East 5,298.94 feet along the boundary of said State Lease No. 20156, as amended, to a point having Coordinates of X = 1,719,021.02 and Y = 477,365.00; thence South 00 degrees 42 minutes 27 seconds West 5,220.40 feet to a point being the Southernmost Northeast corner of State lease No. 20721 Tract A, as amended, having Coordinates of X = 1,718,956.55 and Y = 472,145.00; thence along the boundary of said State Lease No. 20721 Tract A the following: North 89 degrees 38 minutes 02 seconds West 5,270.46 feet to a point having Coordinates of X = 1,713,686.19 and Y = 472,178.68 and North 00 degrees 23 minutes 47 seconds East 5,186.44 feet to the point of beginning, containing approximately **4.94 acres**, all as more particularly outlined on a plat on file in the Office of Mineral Resources, Department of Natural Resources. All bearings, distances and coordinates are based on Louisiana Coordinate System of 1927, (North or South Zone), where applicable.

NOTE: The above description of the Tract nominated for lease has been provided and corrected, where required, exclusively by the nomination party. Any mineral lease selected from this Tract and awarded by the Louisiana State Mineral and Energy Board shall be without warranty of any kind, either express, implied, or statutory, including, but not limited to, the implied warranties of merchantability and fitness for a particular purpose. Should the mineral lease awarded by the Louisiana State Mineral and Energy Board be subsequently modified, cancelled or abrogated due to the existence of conflicting leases, operating agreements, private claims or other future obligations or conditions which may affect all or any portion of the leased Tract, it shall not relieve the Lessee of the obligation to pay any bonus due thereon to the Louisiana State Mineral and Energy Board, nor shall the Louisiana State Mineral and Energy Board be obligated to refund any consideration paid by the Lessor prior to such modification, cancellation, or abrogation, including, but not limited to, bonuses, rentals and royalties.

Applicant: HSE RESOURCES

Bidder	Cash Payment	Price/Acre	Rental	Oil	Gas	Other

Legend

- 19070009
- Active_Leases
- Counties



Office of Mineral Resources, Acres: 4.94 Tract Number: 45171