

TRACT 44952 - Lincoln Parish, Louisiana

A certain Tract of land, excluding the beds and bottoms of all navigable waters, belonging to and not presently under mineral lease from Louisiana Tech University on July 11, 2018, being more fully described as follows: A certain Tract of land, excluding the beds and bottoms of all navigable waters, belonging to and not presently under mineral lease from Louisiana Tech University on April 11, 2018, being more fully described as follows: That certain tract or parcel of land, situated in Sections 22, 23, and 26, Township 18 North feet Range 3 West, Fronting on California A venue, Lincoln Parish, Louisiana , more fully described as being a part of LA Tech University feet Main Campus Tract No. 0010-731002, acquisition information can be found in the Lincoln Parish Clerks of Court Office, containing approximately **298.63 acres**, all as more particularly outlined on a plat on file in the Office of Mineral Resources, Department of Natural Resources. The description is based on information provided by the State Agency regarding location and ownership of surface and mineral rights. All bearings, distances and coordinates, if applicable, are based on Louisiana Coordinate System of 1927, (North or South Zone).

NOTE: The above description of the Tract nominated for the purpose of acquiring a mineral lease or a geophysical agreement has been provided and corrected, where required, exclusively by the nominating party. Any mineral lease or geophysical agreement selected from this Tract and awarded by the Louisiana State Mineral and Energy Board shall be without warranty of any kind, either express, implied or statutory including, but not limited to, title or the implied warranties of merchantability and fitness for a particular purpose.

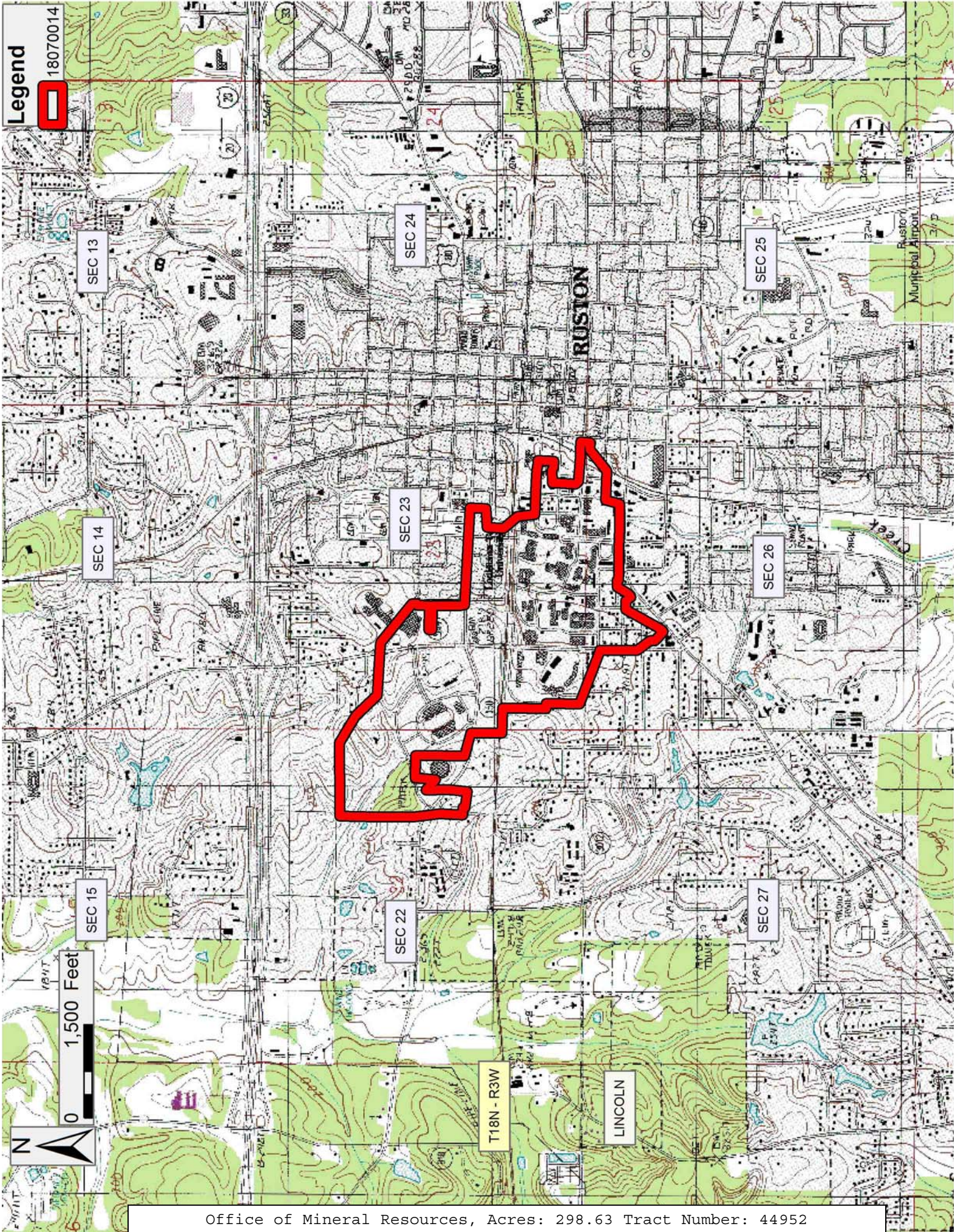
An error or omission in the nominating party's Tract description may require that a State mineral lease or geophysical agreement be modified, canceled or abrogated due to the existence of conflicting leases, operating agreements, private claims or other future obligations or conditions within the Tract described. In such case, however, the Louisiana State Mineral and Energy Board shall not be obligated to refund any consideration paid by the Lessee prior to such modification, cancellation or abrogation including, but not limited to, bonuses, rentals and royalties.

NOTE: No production activities may occur on university property.

NOTE: Louisiana Tech University requires a minimum of \$500.00 per acre and a minimum royalty of 25%.

Bidder	Cash Payment	Price/Acre	Rental	Oil	Gas	Other

Applicant: LOUISIANA TECH UNIVERSITY to Agency and by Resolution from the Louisiana Tech University authorizing the Mineral Board to act in its behalf



TRACT 44953 - Lincoln Parish, Louisiana

A certain Tract of land, excluding the beds and bottoms of all navigable waters, belonging to and not presently under mineral lease from Louisiana Tech University on July 11, 2018, being more fully described as follows: That certain tract or parcel of land, containing approximately 13.50 acres, more or less, situated in Sections 29, Township 18 North feet Range 3 West, Lincoln Parish, Louisiana, more fully described as being a part of LA Tech University and listed by Louisiana Office of State Lands as tract 0010-731028, acquisition information can be found in the Lincoln Parish Clerks of Court Office, containing approximately **13.50 acres**, all as more particularly outlined on a plat on file in the Office of Mineral Resources, Department of Natural Resources. The description is based on information provided by the State Agency regarding location and ownership of surface and mineral rights. All bearings, distances and coordinates, if applicable, are based on Louisiana Coordinate System of 1927, (North or South Zone).

NOTE: The above description of the Tract nominated for the purpose of acquiring a mineral lease or a geophysical agreement has been provided and corrected, where required, exclusively by the nominating party. Any mineral lease or geophysical agreement selected from this Tract and awarded by the Louisiana State Mineral and Energy Board shall be without warranty of any kind, either express, implied or statutory including, but not limited to, title or the implied warranties of merchantability and fitness for a particular purpose.

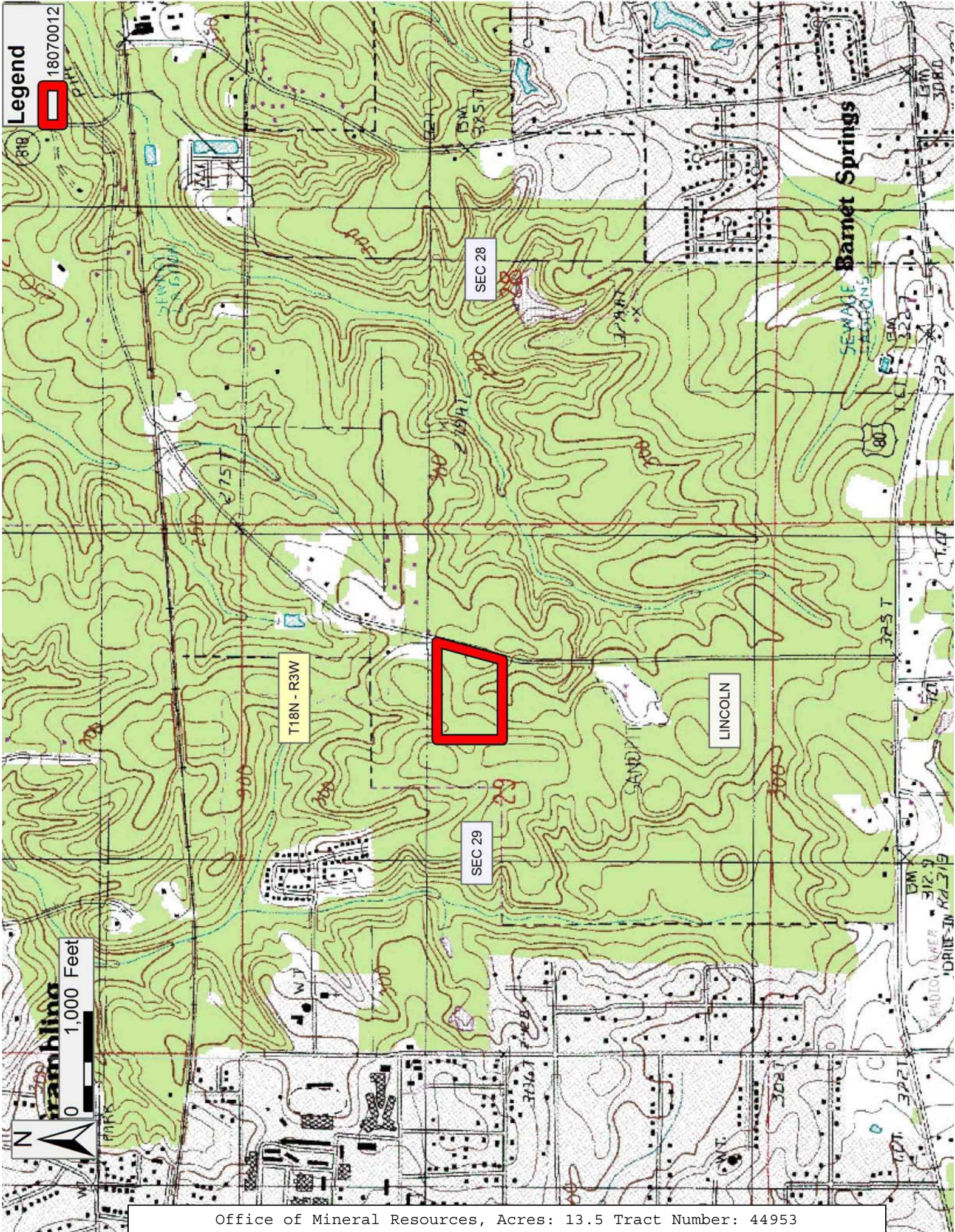
An error or omission in the nominating party's Tract description may require that a State mineral lease or geophysical agreement be modified, canceled or abrogated due to the existence of conflicting leases, operating agreements, private claims or other future obligations or conditions within the Tract described. In such case, however, the Louisiana State Mineral and Energy Board shall not be obligated to refund any consideration paid by the Lessee prior to such modification, cancellation or abrogation including, but not limited to, bonuses, rentals and royalties.

NOTE: No production activities may occur on university property.

NOTE: Louisiana Tech University requires a minimum of \$500.00 per acre and a minimum royalty of 25%.

Applicant: LOUISIANA TECH UNIVERSITY to Agency and by Resolution from the Louisiana Tech University authorizing the Mineral Board to act in its behalf

Bidder	Cash Payment	Price/Acre	Rental	Oil	Gas	Other



TRACT 44954 - Lincoln Parish, Louisiana

A certain Tract of land, excluding the beds and bottoms of all navigable waters, belonging to and not presently under mineral lease from Louisiana Tech University on July 11, 2018, being more fully described as follows: A certain Tract of land, excluding the beds and bottoms of all navigable waters, belonging to and not presently under mineral lease from Louisiana Tech University on June 10, 2015, being more fully described as follows: That certain tract or parcel of land, containing approximately 368.47 acres, more or less, situated in Sections 26 and 35, Township 18 North feet Range 3 West, Lincoln Parish, Louisiana, more fully described as being a part of LA Tech University feet South Campus Tract No. 0010-731021, acquisition information can be found in the Lincoln Parish Clerks of Court Office, containing approximately **368.47 acres**, all as more particularly outlined on a plat on file in the Office of Mineral Resources, Department of Natural Resources. The description is based on information provided by the State Agency regarding location and ownership of surface and mineral rights. All bearings, distances and coordinates, if applicable, are based on Louisiana Coordinate System of 1927, (North or South Zone).

NOTE: The above description of the Tract nominated for the purpose of acquiring a mineral lease or a geophysical agreement has been provided and corrected, where required, exclusively by the nominating party. Any mineral lease or geophysical agreement selected from this Tract and awarded by the Louisiana State Mineral and Energy Board shall be without warranty of any kind, either express, implied or statutory including, but not limited to, title or the implied warranties of merchantability and fitness for a particular purpose.

An error or omission in the nominating party's Tract description may require that a State mineral lease or geophysical agreement be modified, canceled or abrogated due to the existence of conflicting leases, operating agreements, private claims or other future obligations or conditions within the Tract described. In such case, however, the Louisiana State Mineral and Energy Board shall not be obligated to refund any consideration paid by the Lessee prior to such modification, cancellation or abrogation including, but not limited to, bonuses, rentals and royalties.

NOTE: No production activities may occur on university property.

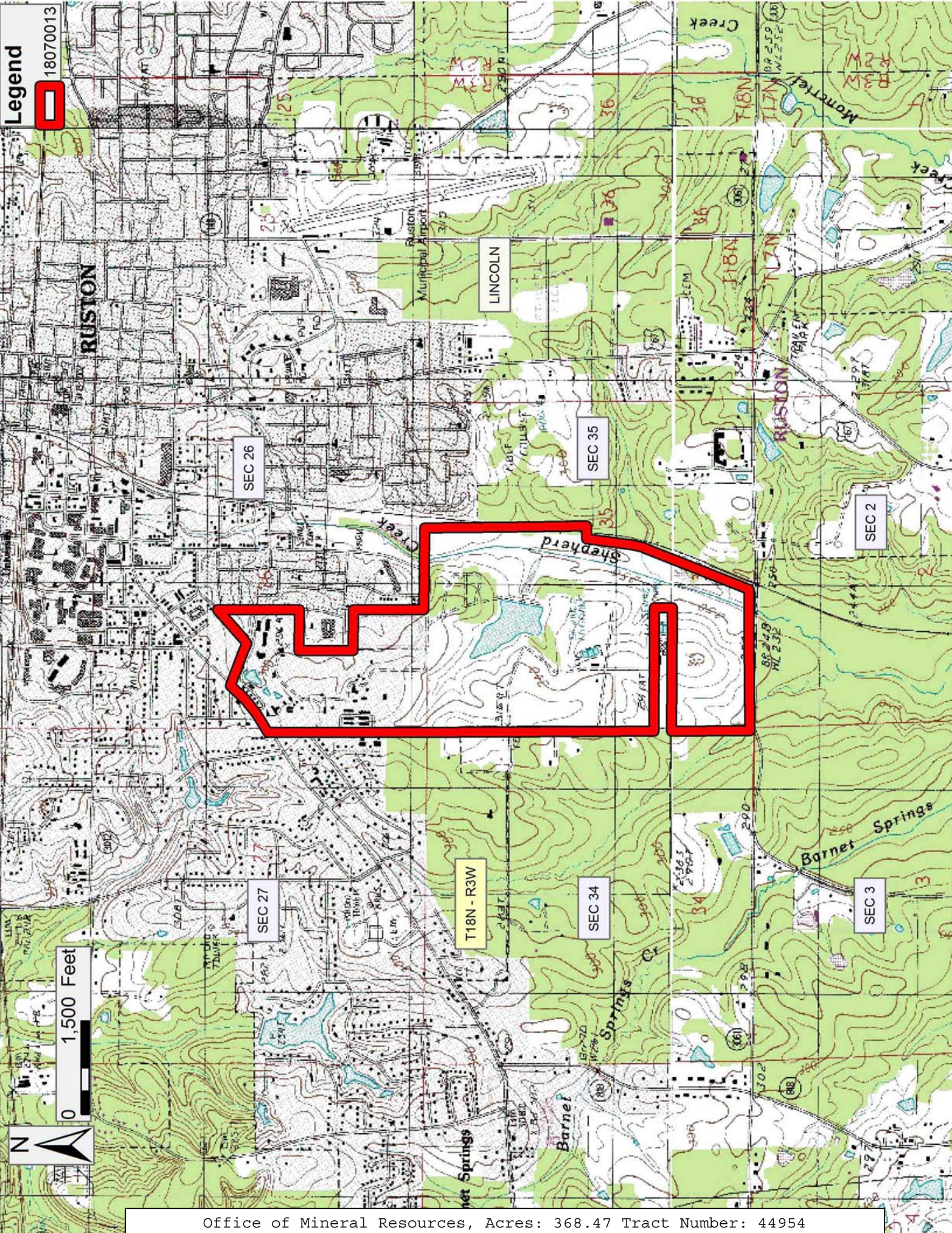
NOTE: Louisiana Tech University requires a minimum of \$500.00 per acre and a minimum royalty of 25%.

Applicant: LOUISIANA TECH UNIVERSITY to Agency and by Resolution from the Louisiana Tech University authorizing the Mineral Board to act in its behalf

Bidder	Cash Payment	Price/Acre	Rental	Oil	Gas	Other

Legend

18070013



TRACT 44955 - Evangeline Parish School Board - Evangeline Parish, Louisiana

The State Mineral and Energy Board acting on behalf of the Evangeline Parish School Board, pursuant to Resolution(s) adopted by that (those) body(ies) and in accordance with Louisiana Revised Statutes 30:121-136 and 151-156, as amended, and Article XIV, Section 16(A)(9) and (B) of the Louisiana Constitution of 1974, as same may be continued and promulgated in proper statutory form and, further, amended from time to time, advertises the lands not under mineral lease on July 11, 2018, excluding the beds and bottoms of all navigable water bodies located within the following: All or a portion of Section 8 and 15 and 16 and 9 and 17, Township 02 South, Range 01 East in Evangeline Parish, Louisiana, All or a portion of Section 16, Township 02 South, Range 01 East in Evangeline Parish, Louisiana, containing **641.20 acres**, all as more particularly outlined on a plat on file in the Office of Mineral Resources, Department of Natural Resources. All bearings, distances and coordinates are based on Louisiana Coordinate System of 1927, (North or South Zone).

NOTE: The above description of the Tract nominated for the purpose of acquiring a mineral lease or a geophysical agreement has been provided and corrected, where required, exclusively by the nominating party. Any mineral lease or geophysical agreement selected from this Tract and awarded by the Louisiana State Mineral and Energy Board shall be without warranty of any kind, either express, implied or statutory including, but not limited to, title or the implied warranties of merchantability and fitness for a particular purpose.

An error or omission in the nominating party's Tract description may require that a State mineral lease or geophysical agreement be modified, canceled or abrogated due to the existence of conflicting leases, operating agreements, private claims or other future obligations or conditions within the Tract described. In such case, however, the Louisiana State Mineral and Energy Board shall not be obligated to refund any consideration paid by the Lessee prior to such modification, cancellation or abrogation including, but not limited to, bonuses, rentals and royalties.

NOTE: The Evangeline Parish School Board requires no less that a minimum royalty of 20% and a minimum cash payment of no less than \$500.00 per acre.

Applicant: MURRAY PRESELY to Agency and by Resolution from the Evangeline Parish School Board authorizing the Mineral Board to act in its behalf

Bidder	Cash Payment	Price/Acre	Rental	Oil	Gas	Other

Legend
18070007

