

**TRACT 44759 - Pointe Coupee Parish, Louisiana**

All of the mineral rights only under land adjudicated to and acquired by the State of Louisiana in and through a proper tax sale, and subsequently alienated by the State which retained the mineral rights thereto, and which is not under valid mineral lease from the State of Louisiana on July 12, 2017, situated in Pointe Coupee Parish, Louisiana, and being more fully described as follows: Southwest Quarter (SW/4) of Fractional Section 10, Township 5 South, Range 9 East, Pointe Coupee Parish, Louisiana, being the same lands adjudicated to the State of Louisiana for nonpayment of taxes by Estate of Mrs. O. Joffrion for the year of 1915 as recorded in COB A, Page 301, Entry No. 805, of the records of the Clerk of Court in and for Pointe Coupee Parish, Louisiana, and the mineral rights reserved by the State of Louisiana in that Sheriff Sale to Allen R. Wurtele dated July 3, 1937, recorded in COB M, Page 29, Entry No. 18, of the records of the Clerk of Court in and for Pointe Coupee Parish, Louisiana, containing **160.0 acres**, all as more particularly outlined on a plat on file in the Office of Mineral Resources, Department of Natural Resources. All bearings, distances and coordinates are based on Louisiana Coordinate System of 1927, (North or South Zone), where applicable.

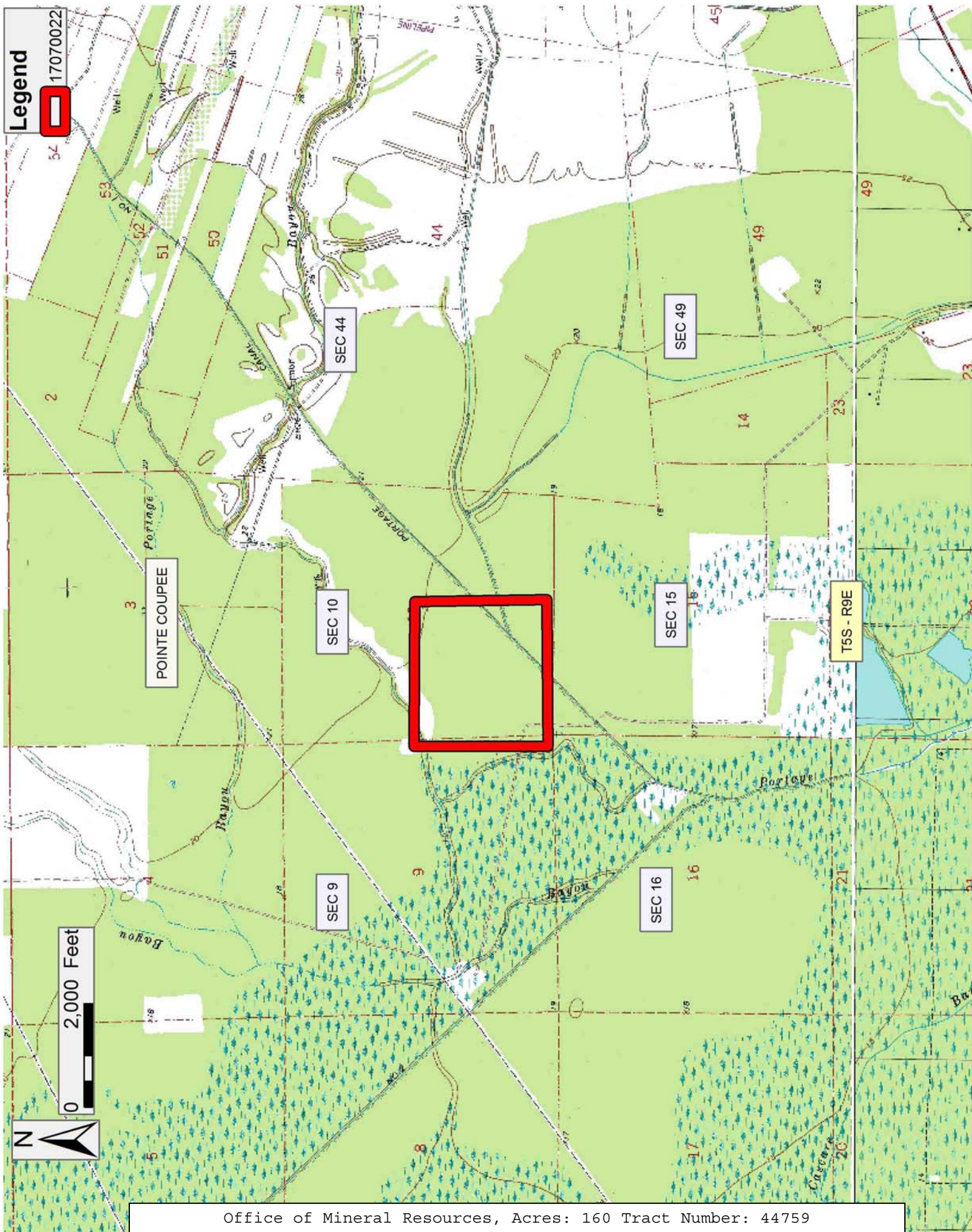
NOTE: The above description of the Tract nominated for the purpose of acquiring a mineral lease or a geophysical agreement has been provided and corrected, where required, exclusively by the nominating party. Any mineral lease or geophysical agreement selected from this Tract and awarded by the Louisiana State Mineral and Energy Board shall be without warranty of any kind, either express, implied or statutory including, but not limited to, title or the implied warranties of merchantability and fitness for a particular purpose.

An error or omission in the nominating party's Tract description may require that a State mineral lease or geophysical agreement be modified, canceled or abrogated due to the existence of conflicting leases, operating agreements, private claims or other future obligations or conditions within the Tract described. In such case, however, the Louisiana State Mineral and Energy Board shall not be obligated to refund any consideration paid by the Lessee prior to such modification, cancellation or abrogation including, but not limited to, bonuses, rentals and royalties.

NOTE: No surface activity on this tract undertaken in conjunction with any operations under any mineral lease given on this tract will be allowed without prior approval of the surface owner and further, no such right of surface use shall be deemed to have been given as part of any mineral lease by the State of Louisiana on this tract.

Bidder	Cash Payment	Price/ Acre	Rental	Oil	Gas	Other


Applicant: WHITEVINE ACQUISITIONS COMPANY



**TRACT 44760 - Pointe Coupee Parish, Louisiana**

All of the mineral rights only under land adjudicated to and acquired by the State of Louisiana in and through a proper tax sale, and subsequently alienated by the State which retained the mineral rights thereto, and which is not under valid mineral lease from the State of Louisiana on July 12, 2017, situated in Pointe Coupee Parish, Louisiana, and being more fully described as follows: the Northwest Quarter (NW/4) of Fractional Section 15, Township 5 South, Range 9 East, Pointe Coupee Parish, Louisiana, being the same lands adjudicated to the State of Louisiana for nonpayment of taxes by Estate of Mrs. O. Joffrion for the year of 1914 as recorded in COB E, Page 315, Entry No. 8357, of the records of the Clerk of Court in and for Pointe Coupee Parish, Louisiana, and the mineral rights reserved by the State of Louisiana in that Sheriff Sale to Allen R. Wurtele dated July 3, 1937, recorded in COB H, Page 305, Entry No. 1298, of the records of the Clerk of Court in and for Pointe Coupee Parish, Louisiana, containing, **160.0 acres**, all as more particularly outlined on a plat on file in the Office of Mineral Resources, Department of Natural Resources. All bearings, distances and coordinates are based on Louisiana Coordinate System of 1927, (North or South Zone), where applicable.

NOTE: The above description of the Tract nominated for the purpose of acquiring a mineral lease or a geophysical agreement has been provided and corrected, where required, exclusively by the nominating party. Any mineral lease or geophysical agreement selected from this Tract and awarded by the Louisiana State Mineral and Energy Board shall be without warranty of any kind, either express, implied or statutory including, but not limited to, title or the implied warranties of merchantability and fitness for a particular purpose.

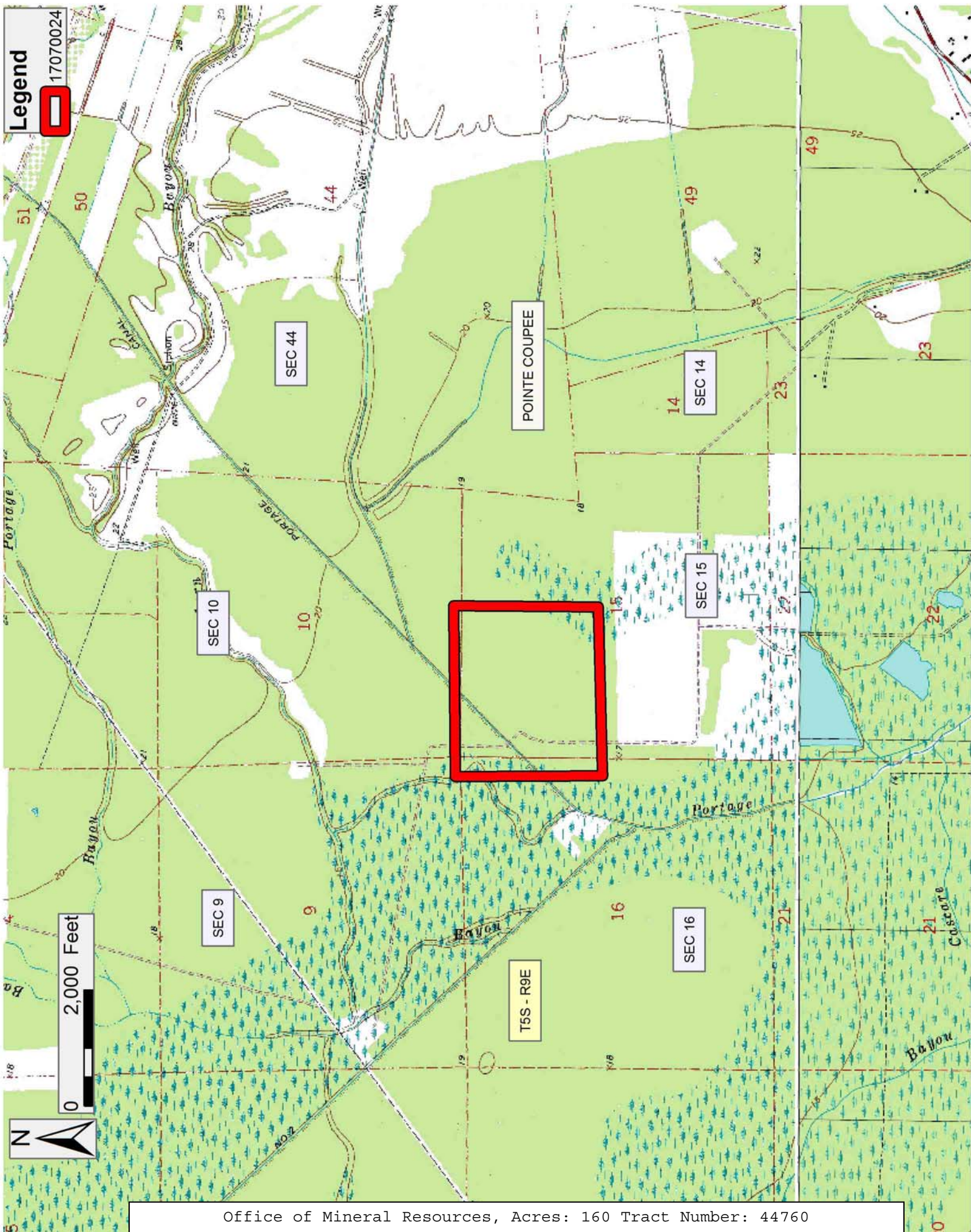
An error or omission in the nominating party's Tract description may require that a State mineral lease or geophysical agreement be modified, canceled or abrogated due to the existence of conflicting leases, operating agreements, private claims or other future obligations or conditions within the Tract described. In such case, however, the Louisiana State Mineral and Energy Board shall not be obligated to refund any consideration paid by the Lessee prior to such modification, cancellation or abrogation including, but not limited to, bonuses, rentals and royalties.

NOTE: No surface activity on this tract undertaken in conjunction with any operations under any mineral lease given on this tract will be allowed without prior approval of the surface owner and further, no such right of surface use shall be deemed to have been given as part of any mineral lease by the State of Louisiana on this tract.

Applicant: WHITEVINE ACQUISITIONS COMPANY

Bidder	Cash Payment	Price/ Acre	Rental	Oil	Gas	Other





**TRACT 44761 - Pointe Coupee Parish, Louisiana**

All of the mineral rights only under land adjudicated to and acquired by the State of Louisiana in and through a proper tax sale, and subsequently alienated by the State which retained the mineral rights thereto, and which is not under valid mineral lease from the State of Louisiana on July 12, 2017, situated in Pointe Coupee Parish, Louisiana, and being more fully described as follows: the Northwest Quarter of the Northeast Quarter (NW/4 of NE/4) of Fractional Section 15, Township 5 South, Range 9 East, Pointe Coupee Parish, Louisiana, being the same lands adjudicated to the State of Louisiana for nonpayment of taxes by Estate of Mrs. O. Joffrion for the year of 1915 as recorded in COB A, Page 301, Entry No. 805, of the records of the Clerk of Court in and for Pointe Coupee Parish, Louisiana, and the mineral rights reserved by the State of Louisiana in that Sheriff Sale to Allen R. Wurtele dated July 3, 1937, recorded in COB M, Page 29, Entry No. 18, of the records of the Clerk of Court in and for Pointe Coupee Parish, Louisiana, containing **40.0 acres**, all as more particularly outlined on a plat on file in the Office of Mineral Resources, Department of Natural Resources. All bearings, distances and coordinates are based on Louisiana Coordinate System of 1927, (North or South Zone), where applicable.

NOTE: The above description of the Tract nominated for the purpose of acquiring a mineral lease or a geophysical agreement has been provided and corrected, where required, exclusively by the nominating party. Any mineral lease or geophysical agreement selected from this Tract and awarded by the Louisiana State Mineral and Energy Board shall be without warranty of any kind, either express, implied or statutory including, but not limited to, title or the implied warranties of merchantability and fitness for a particular purpose.

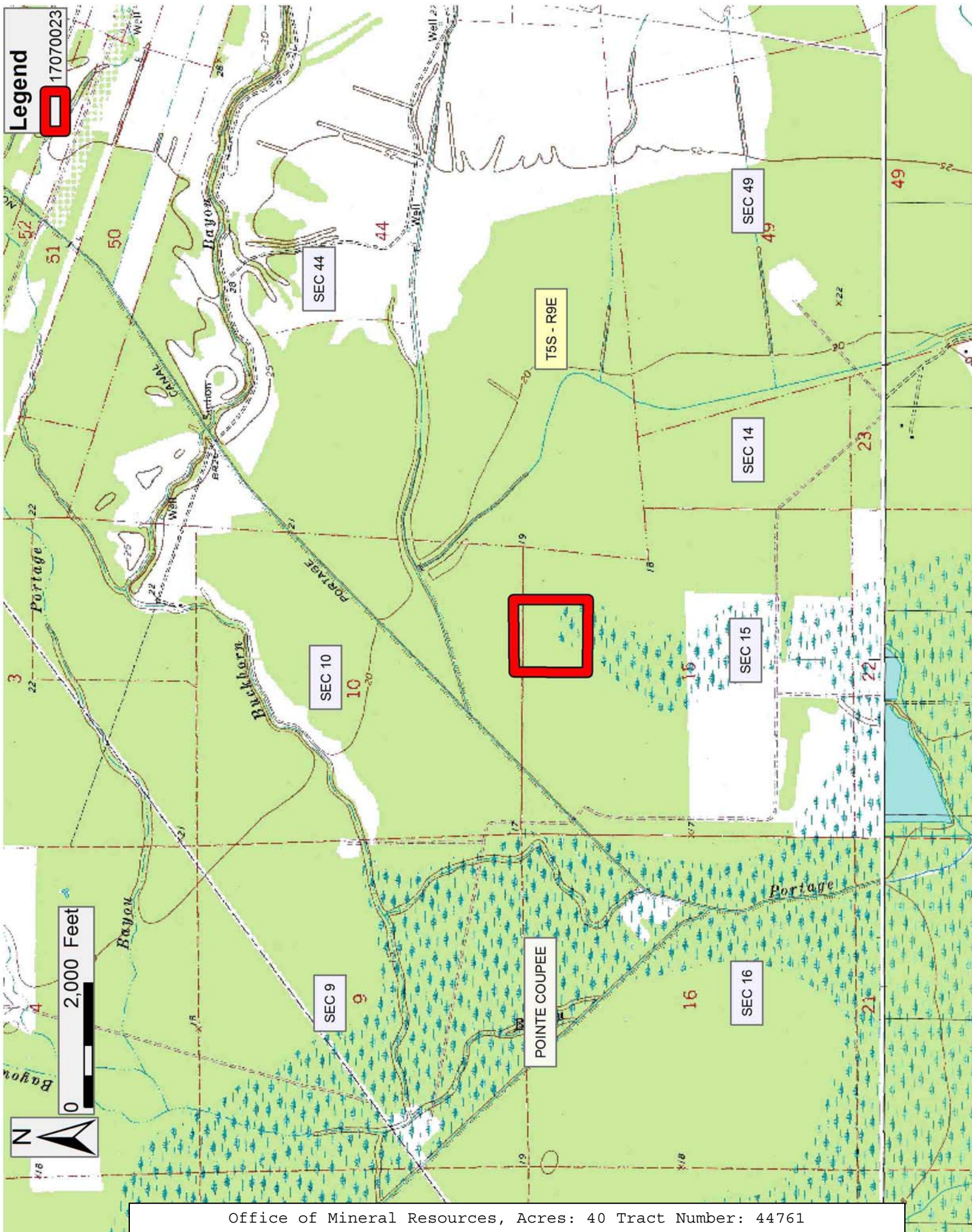
An error or omission in the nominating party's Tract description may require that a State mineral lease or geophysical agreement be modified, canceled or abrogated due to the existence of conflicting leases, operating agreements, private claims or other future obligations or conditions within the Tract described. In such case, however, the Louisiana State Mineral and Energy Board shall not be obligated to refund any consideration paid by the Lessee prior to such modification, cancellation or abrogation including, but not limited to, bonuses, rentals and royalties.

NOTE: No surface activity on this tract undertaken in conjunction with any operations under any mineral lease given on this tract will be allowed without prior approval of the surface owner and further, no such right of surface use shall be deemed to have been given as part of any mineral lease by the State of Louisiana on this tract.

Applicant: WHITEVINE ACQUISITIONS COMPANY

Bidder	Cash Payment	Price/ Acre	Rental	Oil	Gas	Other





**TRACT 44762 - Pointe Coupee Parish, Louisiana**

All of the mineral rights only under land adjudicated to and acquired by the State of Louisiana in and through a proper tax sale, and subsequently alienated by the State which retained the mineral rights thereto, and which is not under valid mineral lease from the State of Louisiana on July 12, 2017, situated in Pointe Coupee Parish, Louisiana, and being more fully described as follows: the Northwest Quarter (NW/4) of Section 31, Township 5 South, Range 9 East, Pointe Coupee Parish, Louisiana, being the same lands adjudicated to the State of Louisiana for nonpayment of taxes by Estate of Mrs. O. Joffrion for the year of 1915 as recorded in COB A, Page 98, Entry No. 273, of the records of the Clerk of Court in and for Pointe Coupee Parish, Louisiana, and the mineral rights reserved by the State of Louisiana in that Sheriff Sale to W. K. Toler dated May 12, 1924, recorded in COB E, Page 202, Entry No. 7892, of the records of the Clerk of Court in and for Pointe Coupee Parish, Louisiana, containing **160.0 acres**, all as more particularly outlined on a plat on file in the Office of Mineral Resources, Department of Natural Resources. All bearings, distances and coordinates are based on Louisiana Coordinate System of 1927, (North or South Zone), where applicable.

NOTE: The above description of the Tract nominated for the purpose of acquiring a mineral lease or a geophysical agreement has been provided and corrected, where required, exclusively by the nominating party. Any mineral lease or geophysical agreement selected from this Tract and awarded by the Louisiana State Mineral and Energy Board shall be without warranty of any kind, either express, implied or statutory including, but not limited to, title or the implied warranties of merchantability and fitness for a particular purpose.

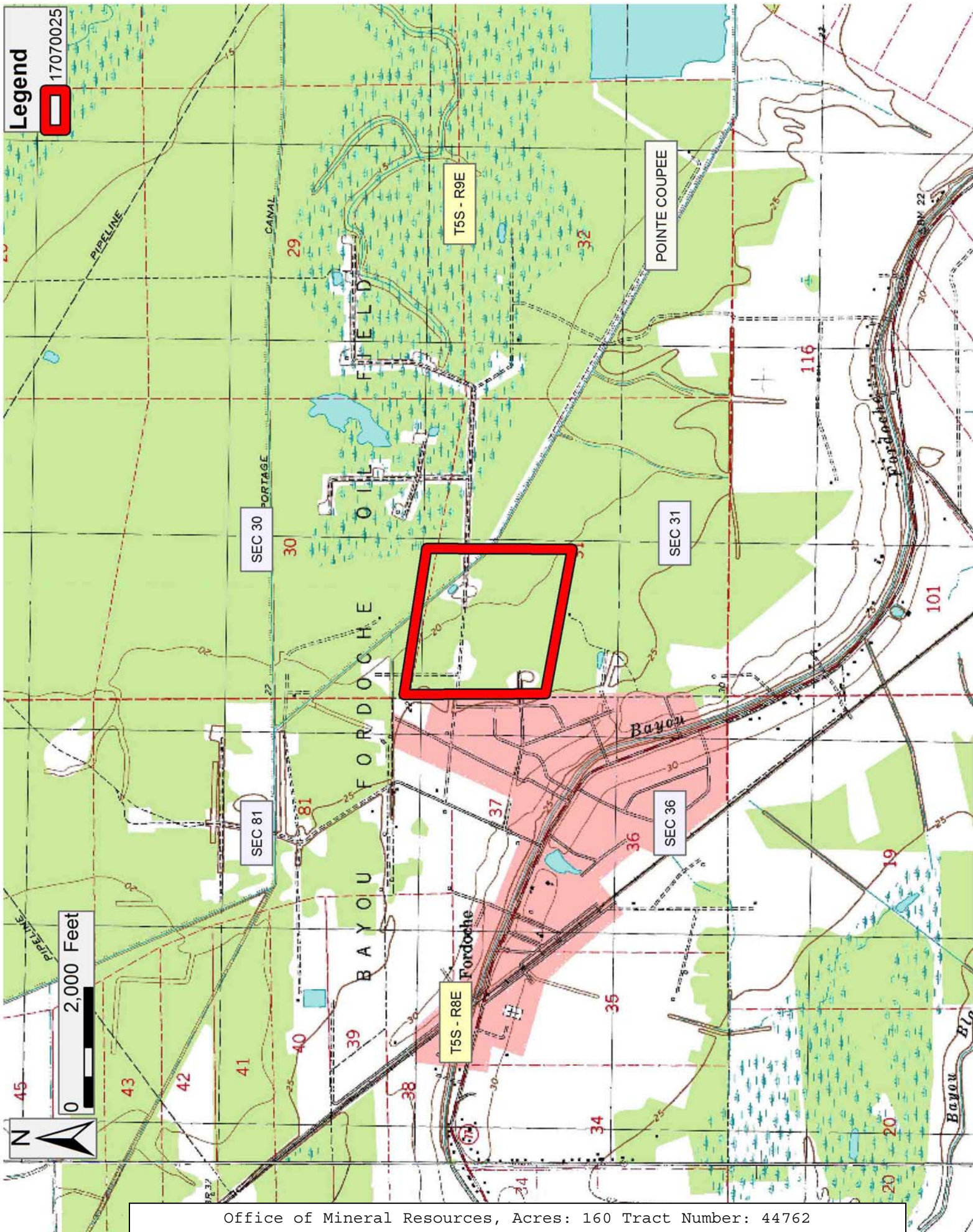
An error or omission in the nominating party's Tract description may require that a State mineral lease or geophysical agreement be modified, canceled or abrogated due to the existence of conflicting leases, operating agreements, private claims or other future obligations or conditions within the Tract described. In such case, however, the Louisiana State Mineral and Energy Board shall not be obligated to refund any consideration paid by the Lessee prior to such modification, cancellation or abrogation including, but not limited to, bonuses, rentals and royalties.

NOTE: No surface activity on this tract undertaken in conjunction with any operations under any mineral lease given on this tract will be allowed without prior approval of the surface owner and further, no such right of surface use shall be deemed to have been given as part of any mineral lease by the State of Louisiana on this tract.

Applicant: WHITEVINE ACQUISITIONS COMPANY

Bidder	Cash Payment	Price/ Acre	Rental	Oil	Gas	Other







**TRACT 44763 - Pointe Coupee Parish, Louisiana**

All of the mineral rights only under land adjudicated to and acquired by the State of Louisiana in and through a proper tax sale, and subsequently alienated by the State which retained the mineral rights thereto, and which is not under valid mineral lease from the State of Louisiana on July 12, 2017, situated in Pointe Coupee Parish, Louisiana, and being more fully described as follows: the Southeast Quarter (SE/4) of Section 31, Township 5 South, Range 9 East, Pointe Coupee Parish, Louisiana, being the same lands adjudicated to the State of Louisiana for nonpayment of taxes by Estate of Mrs. O. Joffrion for the year of 1915 as recorded in COB A, Page 98, Entry No. 273, of the records of the Clerk of Court in and for Pointe Coupee Parish, Louisiana, and the mineral rights reserved by the State of Louisiana in that Sheriff Sale to W. K. Toler dated May 12, 1924, recorded in COB E, Page 202, Entry No. 7892, of the records of the Clerk of Court in and for Pointe Coupee Parish, Louisiana, containing **160.0 acres**, all as more particularly outlined on a plat on file in the Office of Mineral Resources, Department of Natural Resources. All bearings, distances and coordinates are based on Louisiana Coordinate System of 1927, (North or South Zone), where applicable.

NOTE: The above description of the Tract nominated for the purpose of acquiring a mineral lease or a geophysical agreement has been provided and corrected, where required, exclusively by the nominating party. Any mineral lease or geophysical agreement selected from this Tract and awarded by the Louisiana State Mineral and Energy Board shall be without warranty of any kind, either express, implied or statutory including, but not limited to, title or the implied warranties of merchantability and fitness for a particular purpose.

An error or omission in the nominating party's Tract description may require that a State mineral lease or geophysical agreement be modified, canceled or abrogated due to the existence of conflicting leases, operating agreements, private claims or other future obligations or conditions within the Tract described. In such case, however, the Louisiana State Mineral and Energy Board shall not be obligated to refund any consideration paid by the Lessee prior to such modification, cancellation or abrogation including, but not limited to, bonuses, rentals and royalties.

NOTE: No surface activity on this tract undertaken in conjunction with any operations under any mineral lease given on this tract will be allowed without prior approval of the surface owner and further, no such right of surface use shall be deemed to have been given as part of any mineral lease by the State of Louisiana on this tract.

Applicant: WHITEVINE ACQUISITIONS COMPANY

Bidder	Cash Payment	Price/ Acre	Rental	Oil	Gas	Other

