

TRACT 44746 - Pointe Coupee and St. Landry Parishes, Louisiana

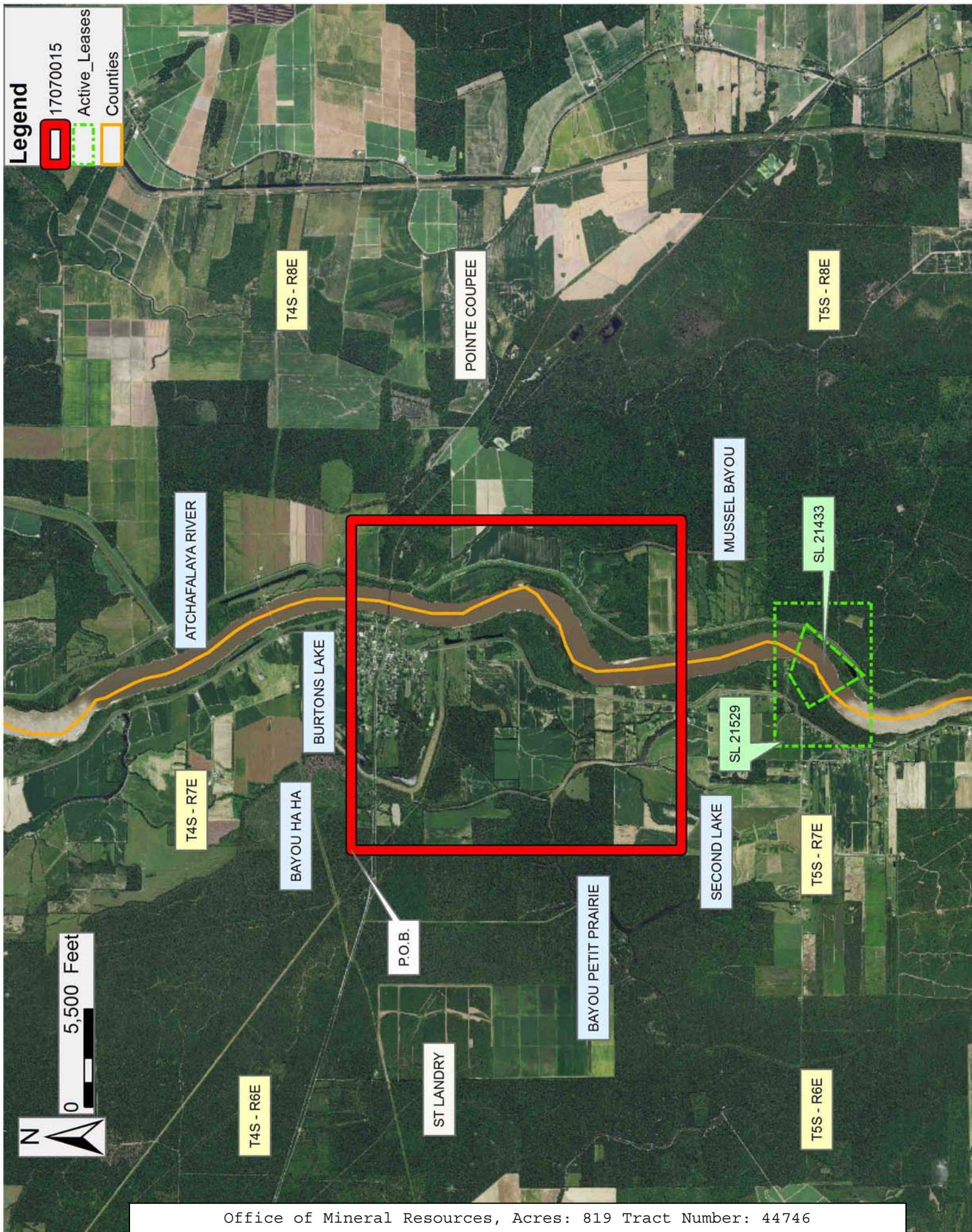
All of the lands now or formerly constituting the beds and bottoms of all water bodies of every nature and description as to which title is vested in the State of Louisiana, together with all islands arising therein and other lands formed by accretion or by reliction, where allowed by law, excepting tax adjudicated lands, and not presently under mineral lease on July 12, 2017, situated in Pointe Coupee and St. Landry Parishes, Louisiana, and more particularly described as follows: Beginning at a point having Coordinates of X = 1,860,125.37 and Y = 738,337.60; thence East 18,480.00 feet to a point having Coordinates of X = 1,878,605.37 and Y = 738,337.60; thence South 18,480.00 feet to a point having Coordinates of X = 1,878,605.37 and Y = 719,857.60; thence West 18,480.00 feet to a point having Coordinates of X = 1,860,125.37 and Y = 719,857.60; thence North 18,480.00 feet to the point of beginning, **LESS AND EXCEPT** any right, title, and interest in lands owned by and not under lease from the State of Louisiana, on behalf of the Pointe Coupee and St. Landry Parish School Boards, situated in Section 16, Township 4 South, Range 7 East, Pointe Coupee and St. Landry Parishes, Louisiana, contained within the above described tract, containing approximately **819 acres**, all as more particularly outlined on a plat on file in the Office of Mineral Resources, Department of Natural Resources. All bearings, distances and coordinates are based on Louisiana Coordinate System of 1927, (North or South Zone), where applicable.

NOTE: The above description of the Tract nominated for the purpose of acquiring a mineral lease or a geophysical agreement has been provided and corrected, where required, exclusively by the nominating party. Any mineral lease or geophysical agreement selected from this Tract and awarded by the Louisiana State Mineral and Energy Board shall be without warranty of any kind, either express, implied or statutory including, but not limited to, title or the implied warranties of merchantability and fitness for a particular purpose.

An error or omission in the nominating party's Tract description may require that a State mineral lease or geophysical agreement be modified, canceled or abrogated due to the existence of conflicting leases, operating agreements, private claims or other future obligations or conditions within the Tract described. In such case, however, the Louisiana State Mineral and Energy Board shall not be obligated to refund any consideration paid by the Lessee prior to such modification, cancellation or abrogation including, but not limited to, bonuses, rentals and royalties.

Bidder	Cash Payment	Price/ Acre	Rental	Oil	Gas	Other

Applicant: WHITEVINE ACQUISITIONS COMPANY



TRACT 44747 - Pointe Coupee Parish, Louisiana

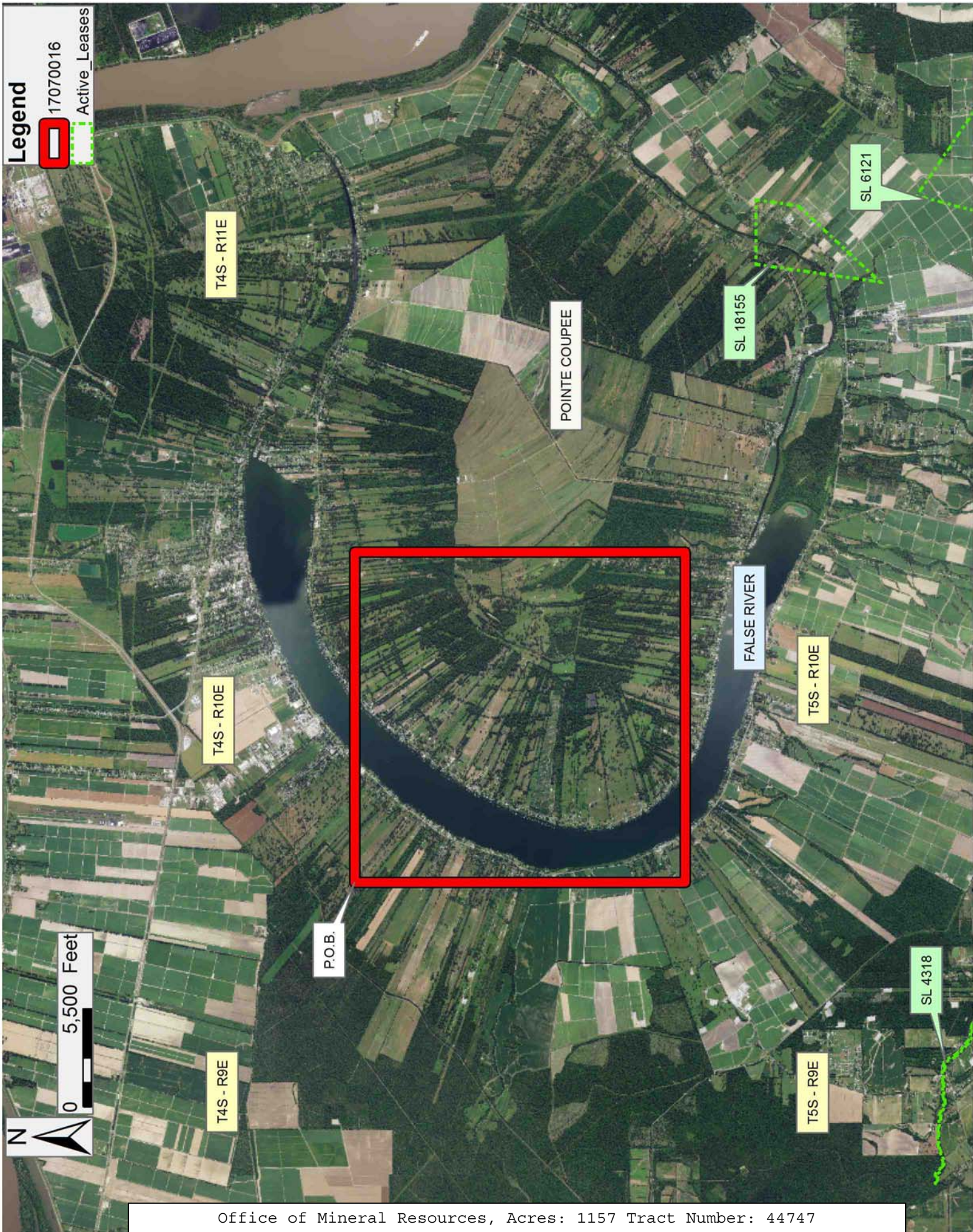
All of the lands now or formerly constituting the beds and bottoms of all water bodies of every nature and description as to which title is vested in the State of Louisiana, together with all islands arising therein and other lands formed by accretion or by reliction, where allowed by law, excepting tax adjudicated lands, and not presently under mineral lease on July 12, 2017, situated in Pointe Coupee Parish, Louisiana, and more particularly described as follows: Beginning at a point having Coordinates of X = 1,950,457.91 and Y = 730,666.78; thence East 18,480.00 feet to a point having Coordinates of X = 1,968,937.91 and Y = 730,666.78; thence South 18,480.00 feet to a point having Coordinates of X = 1,968,937.91 and Y = 712,186.78; thence West 18,480.00 feet to a point having Coordinates of X = 1,950,457.91 and Y = 712,186.78; thence North 18,480.00 feet to the point of beginning, **LESS AND EXCEPT** any right, title, and interest in lands owned by and not under lease from the State of Louisiana, on behalf of the Pointe Coupee Parish School Board, situated in Section 16, Township 5 South, Range 10 East, Pointe Coupee Parish, Louisiana, contained within the above described tract, containing approximately **1,157 acres**, all as more particularly outlined on a plat on file in the Office of Mineral Resources, Department of Natural Resources. All bearings, distances and coordinates are based on Louisiana Coordinate System of 1927, (North or South Zone), where applicable.

NOTE: The above description of the Tract nominated for the purpose of acquiring a mineral lease or a geophysical agreement has been provided and corrected, where required, exclusively by the nominating party. Any mineral lease or geophysical agreement selected from this Tract and awarded by the Louisiana State Mineral and Energy Board shall be without warranty of any kind, either express, implied or statutory including, but not limited to, title or the implied warranties of merchantability and fitness for a particular purpose.

An error or omission in the nominating party's Tract description may require that a State mineral lease or geophysical agreement be modified, canceled or abrogated due to the existence of conflicting leases, operating agreements, private claims or other future obligations or conditions within the Tract described. In such case, however, the Louisiana State Mineral and Energy Board shall not be obligated to refund any consideration paid by the Lessee prior to such modification, cancellation or abrogation including, but not limited to, bonuses, rentals and royalties.

Applicant: WHITEVINE ACQUISITIONS COMPANY

Bidder	Cash Payment	Price/ Acre	Rental	Oil	Gas	Other



TRACT 44748 - St. Landry Parish, Louisiana

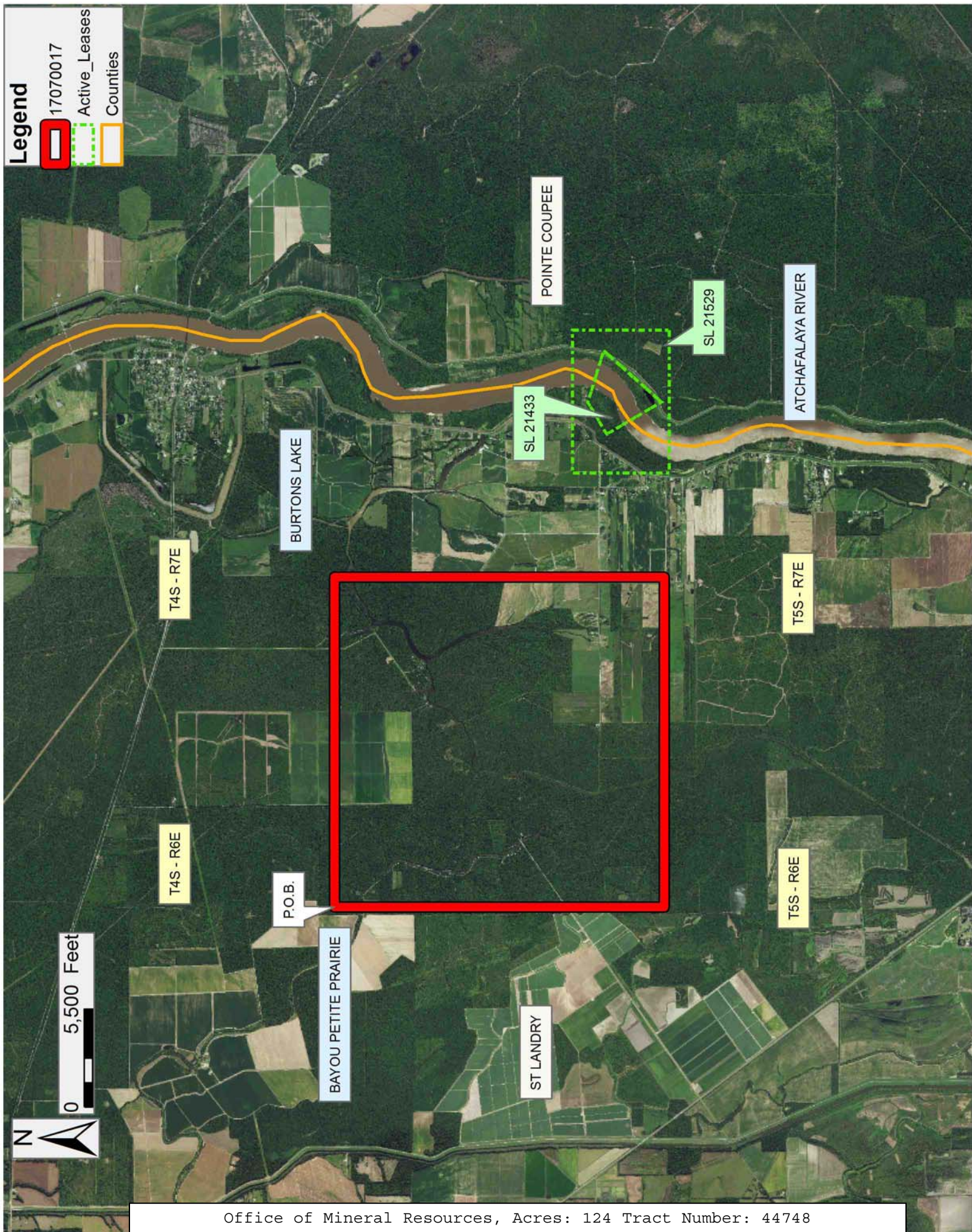
All of the lands now or formerly constituting the beds and bottoms of all water bodies of every nature and description as to which title is vested in the State of Louisiana, together with all islands arising therein and other lands formed by accretion or by reliction, where allowed by law, excepting tax adjudicated lands, and not presently under mineral lease on July 12, 2017, situated in St. Landry Parish, Louisiana, and more particularly described as follows: Beginning at a point having Coordinates of X = 1,841,645.37 and Y = 727,971.89; thence East 18,480.00 feet to a point having Coordinates of X = 1,860,125.37 and Y = 727,971.89; thence South 18,480.00 feet to a point having Coordinates of X = 1,860,125.37 and Y = 709,491.89; thence West 18,480.00 feet to a point having Coordinates of X = 1,841,645.37 and Y = 709,491.89; thence North 18,480.00 feet to the point of beginning, containing approximately **124 acres**, all as more particularly outlined on a plat on file in the Office of Mineral Resources, Department of Natural Resources. All bearings, distances and coordinates are based on Louisiana Coordinate System of 1927, (North or South Zone), where applicable.

NOTE: The above description of the Tract nominated for the purpose of acquiring a mineral lease or a geophysical agreement has been provided and corrected, where required, exclusively by the nominating party. Any mineral lease or geophysical agreement selected from this Tract and awarded by the Louisiana State Mineral and Energy Board shall be without warranty of any kind, either express, implied or statutory including, but not limited to, title or the implied warranties of merchantability and fitness for a particular purpose.

An error or omission in the nominating party's Tract description may require that a State mineral lease or geophysical agreement be modified, canceled or abrogated due to the existence of conflicting leases, operating agreements, private claims or other future obligations or conditions within the Tract described. In such case, however, the Louisiana State Mineral and Energy Board shall not be obligated to refund any consideration paid by the Lessee prior to such modification, cancellation or abrogation including, but not limited to, bonuses, rentals and royalties.

Bidder	Cash Payment	Price/ Acre	Rental	Oil	Gas	Other

Applicant: WHITEVINE ACQUISITIONS COMPANY



TRACT 44749 - Pointe Coupee and St. Landry Parishes, Louisiana

All of the lands now or formerly constituting the beds and bottoms of all water bodies of every nature and description as to which title is vested in the State of Louisiana, together with all islands arising therein and other lands formed by accretion or by reliction, where allowed by law, excepting tax adjudicated lands, and not presently under mineral lease on July 12, 2017, situated in Pointe Coupee and St. Landry Parishes, Louisiana, and more particularly described as follows: Beginning at a point having Coordinates of X = 1,860,125.37 and Y = 719,857.60; thence East 18,480.00 feet to a point having Coordinates of X = 1,878,605.37 and Y = 719,857.60; thence South 18,480.00 feet to a point having Coordinates of X = 1,878,605.37 and Y = 701,377.60; thence West 18,480.00 feet to a point having Coordinates of X = 1,860,125.37 and Y = 701,377.60; thence North 18,480.00 feet to the point of beginning, **LESS AND EXCEPT** all that portion of State Lease No. 21433 and State Lease No. 21529 which lies entirely within the above described tract, being more fully described as follows: Commencing at a point being the point of beginning of the above described nominated tract having Coordinates of X = 2,598,250.00 and Y = 499,330.00; thence South 48 degrees 05 minutes 11 seconds East 7,840.62 feet to a point being the point of beginning of said State Lease No. 21529 having Coordinates of X = 1,865,960.00 and Y = 714,620.00; thence East 8,000.00 feet to a point having Coordinates of X = 1,873,960.00 and Y = 714,620.00; thence South 5,400.00 feet to a point having Coordinates X = 1,873,960.00 and Y = 709,220.00; thence West 8,000.00 feet to a point having Coordinates of X = 1,865,960.00 and Y = 709,220.00; thence North 5,400.00 feet to a point of beginning, and **LESS AND EXCEPT** any right, title, and interest in lands owned by and not under lease from the State of Louisiana, on behalf of the Pointe Coupee and St. Landry Parish School Boards, situated in Section 16, Township 5 South, Range 7 East, Pointe Coupee and St. Landry Parishes, Louisiana, contained within the above described tract, the nominated tract containing approximately **441 acres**, all as more particularly outlined on a plat on file in the Office of Mineral Resources, Department of Natural Resources. All bearings, distances and coordinates are based on Louisiana Coordinate System of 1927, (North or South Zone), where applicable.

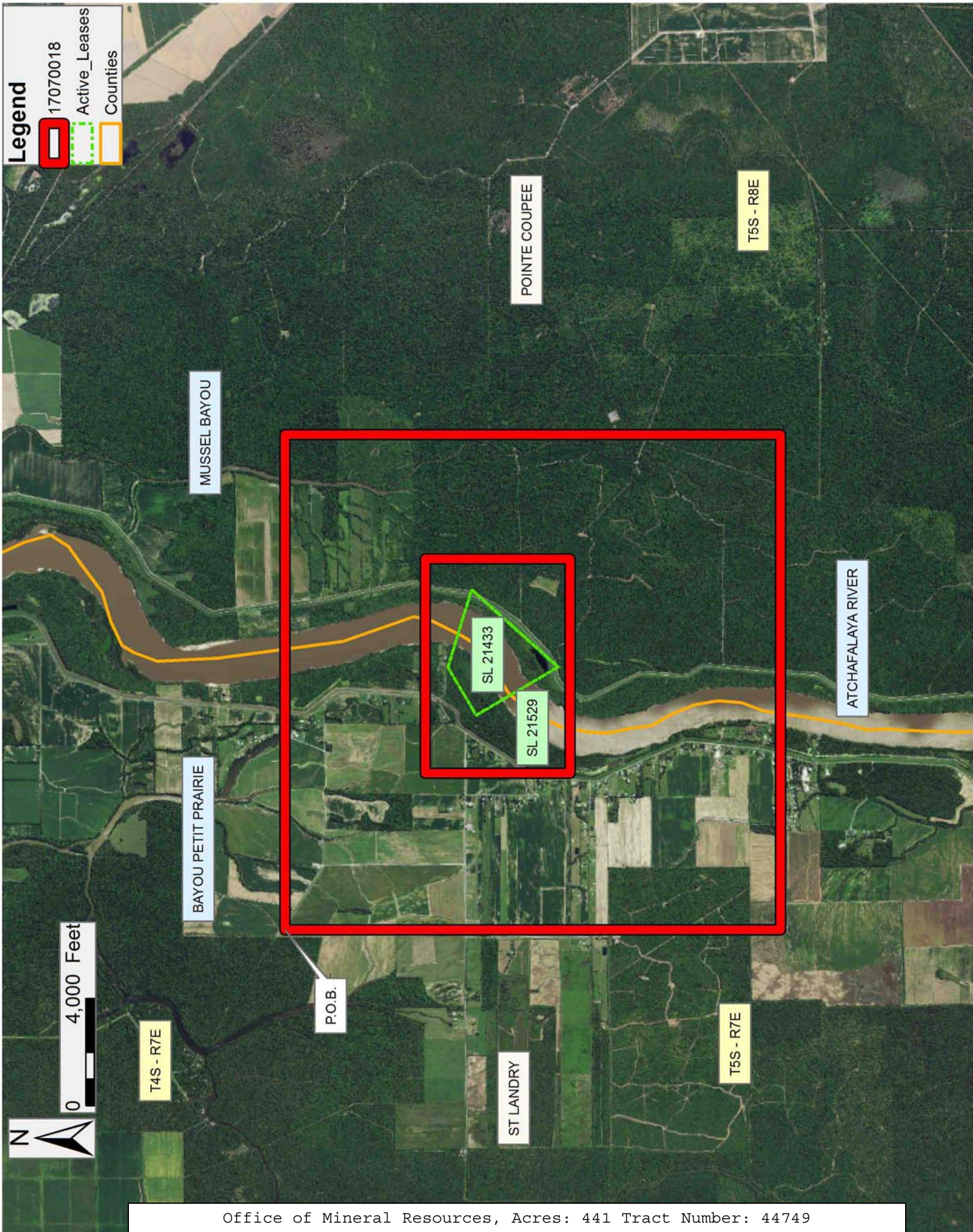
NOTE: The above description of the Tract nominated for the purpose of acquiring a mineral lease or a geophysical agreement has been provided and corrected, where required, exclusively by the nominating party. Any mineral lease or geophysical agreement selected from this Tract and awarded by the Louisiana State Mineral and Energy Board shall be without warranty of any kind, either express, implied or statutory including, but not limited to, title or the implied warranties of merchantability and fitness for a particular purpose.

An error or omission in the nominating party's Tract description may require that a State mineral lease or geophysical agreement be modified, canceled or abrogated due to the existence of conflicting leases, operating agreements, private claims or other future obligations or

conditions within the Tract described. In such case, however, the Louisiana State Mineral and Energy Board shall not be obligated to refund any consideration paid by the Lessee prior to such modification, cancellation or abrogation including, but not limited to, bonuses, rentals and royalties.

Applicant: WHITEVINE ACQUISITIONS COMPANY

Bidder	Cash Payment	Price/ Acre	Rental	Oil	Gas	Other



TRACT 44750 - Pointe Coupee Parish, Louisiana

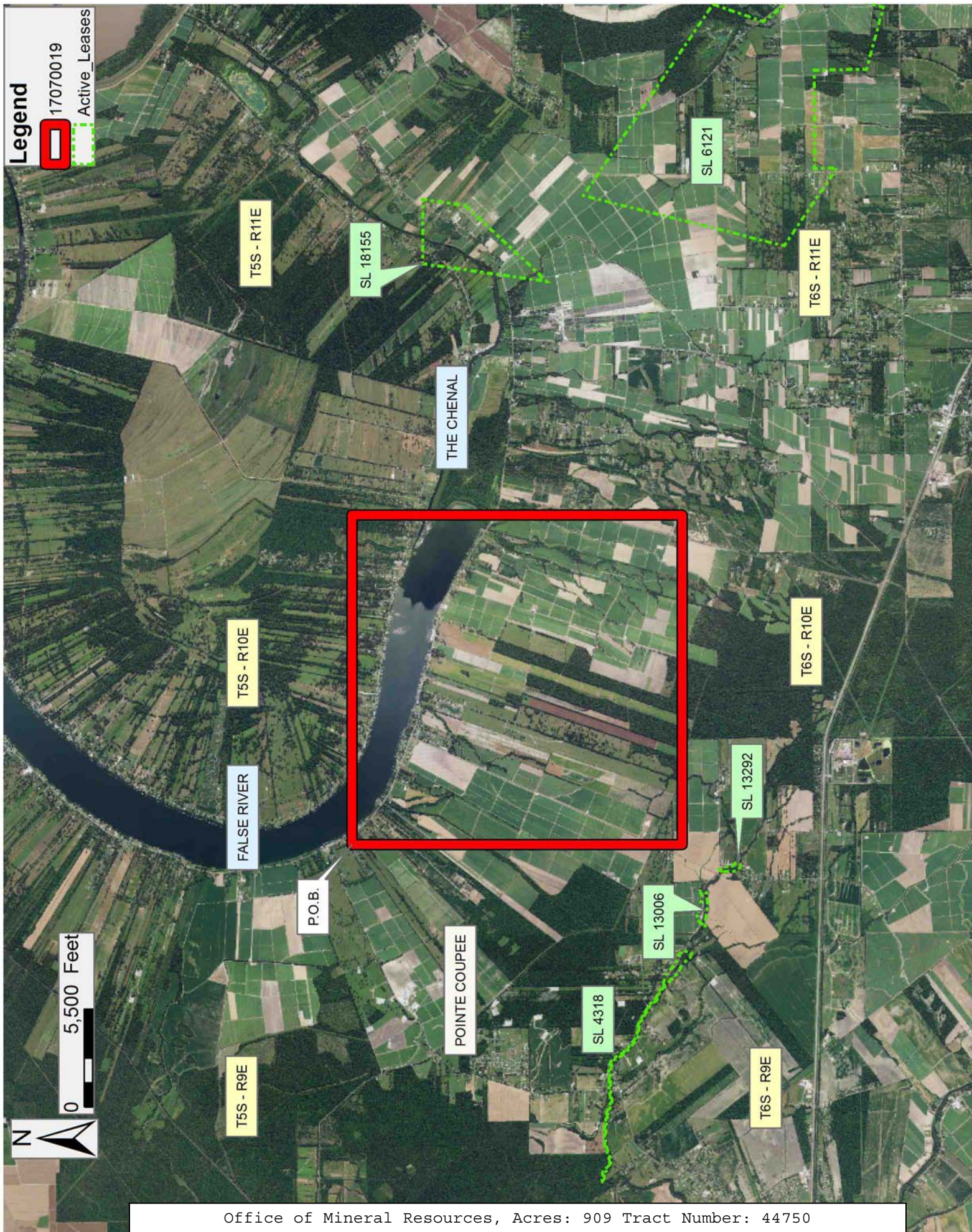
All of the lands now or formerly constituting the beds and bottoms of all water bodies of every nature and description as to which title is vested in the State of Louisiana, together with all islands arising therein and other lands formed by accretion or by reliction, where allowed by law, excepting tax adjudicated lands, and not presently under mineral lease on July 12, 2017, situated in Pointe Coupee Parish, Louisiana, and more particularly described as follows: Beginning at a point having Coordinates of X = 1,952,491.29 and Y = 712,186.78; thence East 18,480.00 feet to a point having Coordinates of X = 1,970,971.29 and Y = 712,186.78; thence South 18,480.00 feet to a point having Coordinates of X = 1,970,971.29 and Y = 693,706.78; thence West 18,480.00 feet to a point having Coordinates of X = 1,952,491.29 and Y = 693,706.78; thence North 18,480.00 feet to the point of beginning, containing approximately **909 acres**, all as more particularly outlined on a plat on file in the Office of Mineral Resources, Department of Natural Resources. All bearings, distances and coordinates are based on Louisiana Coordinate System of 1927, (North or South Zone), where applicable.

NOTE: The above description of the Tract nominated for the purpose of acquiring a mineral lease or a geophysical agreement has been provided and corrected, where required, exclusively by the nominating party. Any mineral lease or geophysical agreement selected from this Tract and awarded by the Louisiana State Mineral and Energy Board shall be without warranty of any kind, either express, implied or statutory including, but not limited to, title or the implied warranties of merchantability and fitness for a particular purpose.

An error or omission in the nominating party's Tract description may require that a State mineral lease or geophysical agreement be modified, canceled or abrogated due to the existence of conflicting leases, operating agreements, private claims or other future obligations or conditions within the Tract described. In such case, however, the Louisiana State Mineral and Energy Board shall not be obligated to refund any consideration paid by the Lessee prior to such modification, cancellation or abrogation including, but not limited to, bonuses, rentals and royalties.

Bidder	Cash Payment	Price/ Acre	Rental	Oil	Gas	Other

Applicant: WHITEVINE ACQUISITIONS COMPANY



TRACT 44751 - Pointe Coupee and St. Landry Parishes, Louisiana

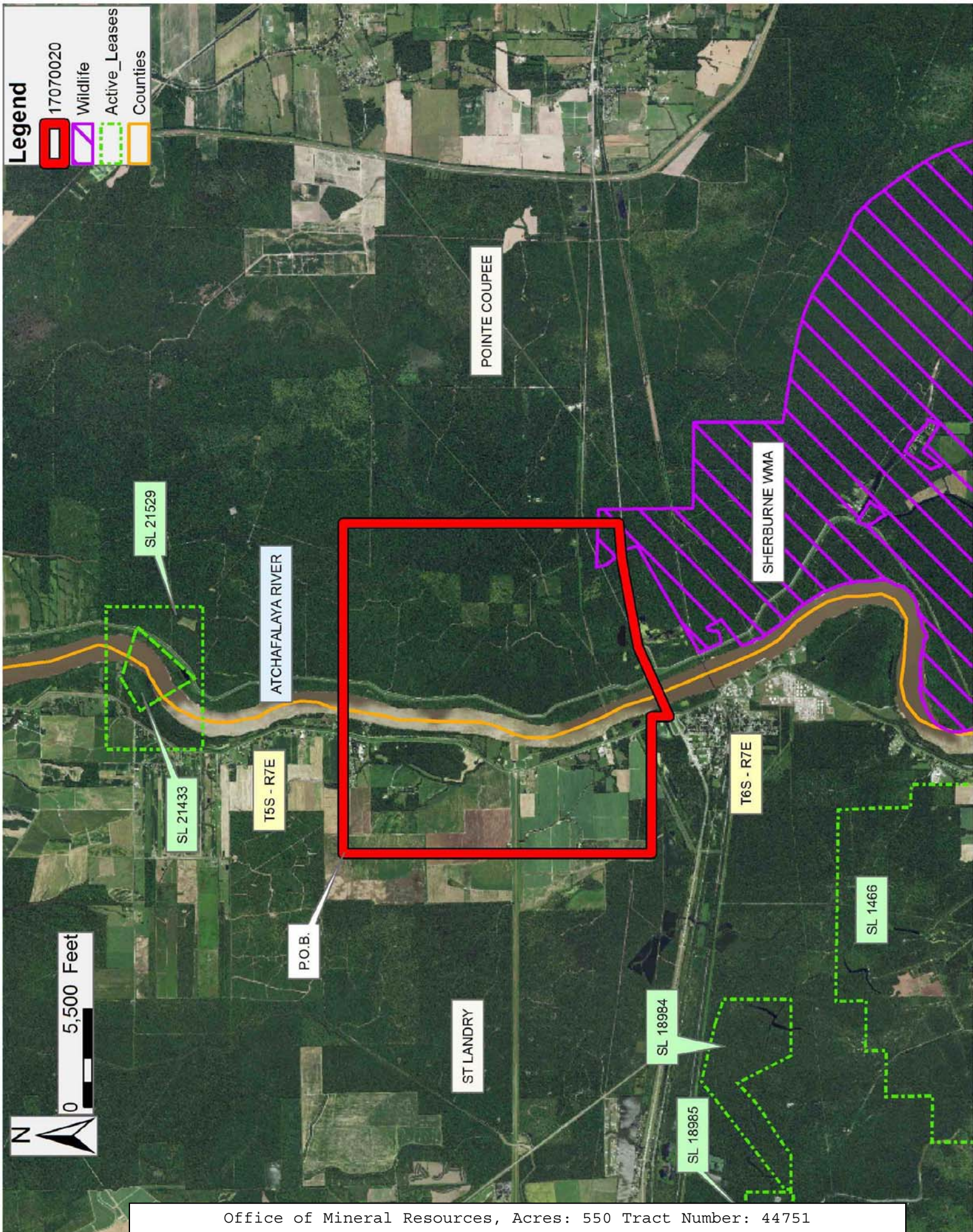
All of the lands now or formerly constituting the beds and bottoms of all water bodies of every nature and description as to which title is vested in the State of Louisiana, together with all islands arising therein and other lands formed by accretion or by reliction, where allowed by law, excepting tax adjudicated lands, and not presently under mineral lease on July 12, 2017, situated in Pointe Coupee and St. Landry Parishes, Louisiana, and more particularly described as follows: Beginning at a point having Coordinates of X = 1,860,125.37 and Y = 701,377.60; thence East 18,480.00 feet to a point having Coordinates of X = 1,878,605.37 and Y = 701,377.60; thence South approximately 15,437 feet to a point on the boundary of the Atchafalaya Basin Legal Area having a Coordinate of X = 1,878,605.37; thence Southwesterly along the boundary of said Atchafalaya Basin Legal Area to a point having a Coordinate of X = 1,867,803.07; thence North approximately 944 feet to a point having Coordinates of X = 1,867,803.07 and Y = 684,120.00; thence West 7,677.71 feet to a point having Coordinates of X = 1,860,125.37 and Y = 684,120.00; thence North 17,257.60 feet to the point of beginning, **LESS AND EXCEPT** any portion falling outside the Atchafalaya Basin Legal Area, (This tract includes only waterbottoms claimed and owned by the state and specifically excludes any land which the state or Wildlife and Fisheries may claim or own and to which the mineral rights are vested in them), containing approximately **550 acres**, all as more particularly outlined on a plat on file in the Office of Mineral Resources, Department of Natural Resources. All bearings, distances and coordinates are based on Louisiana Coordinate System of 1927, (North or South Zone), where applicable.

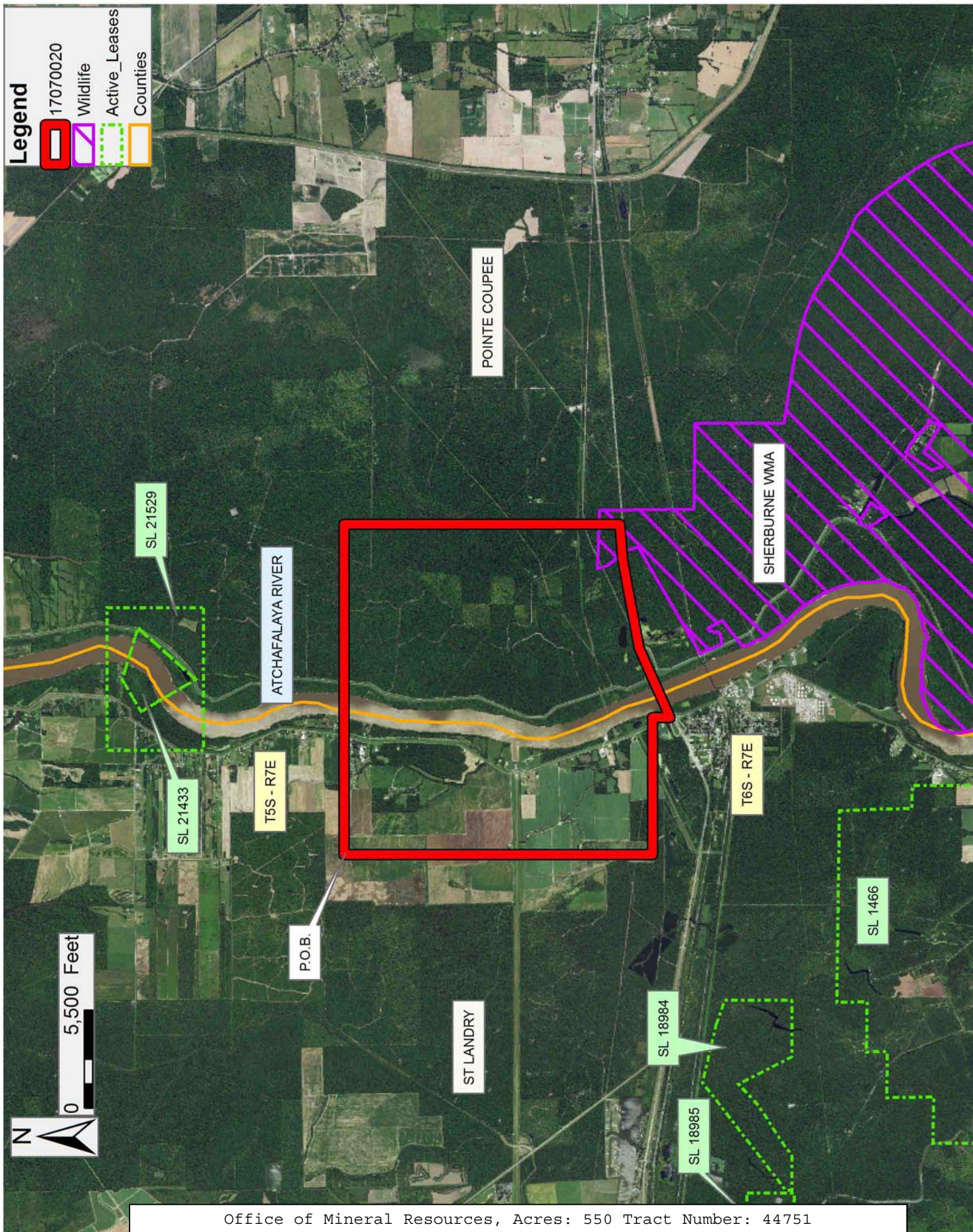
NOTE: The above description of the Tract nominated for the purpose of acquiring a mineral lease or a geophysical agreement has been provided and corrected, where required, exclusively by the nominating party. Any mineral lease or geophysical agreement selected from this Tract and awarded by the Louisiana State Mineral and Energy Board shall be without warranty of any kind, either express, implied or statutory including, but not limited to, title or the implied warranties of merchantability and fitness for a particular purpose.

An error or omission in the nominating party's Tract description may require that a State mineral lease or geophysical agreement be modified, canceled or abrogated due to the existence of conflicting leases, operating agreements, private claims or other future obligations or conditions within the Tract described. In such case, however, the Louisiana State Mineral and Energy Board shall not be obligated to refund any consideration paid by the Lessee prior to such modification, cancellation or abrogation including, but not limited to, bonuses, rentals and royalties.

Applicant: WHITEVINE ACQUISITIONS COMPANY

Bidder	Cash Payment	Price/ Acre	Rental	Oil	Gas	Other





TRACT 44752 - Lafourche Parish, Louisiana

All of the lands now or formerly constituting the beds and bottoms of all water bodies of every nature and description as to which title is vested in the State of Louisiana, together with all islands arising therein and other lands formed by accretion or by reliction, where allowed by law, excepting tax adjudicated lands, and not presently under mineral lease on July 12, 2017, situated in Lafourche Parish, Louisiana, and more particularly described as follows: Beginning at a point having Coordinates of X = 2,293,050.97 and Y = 312,231.18; thence North 2500.00 feet to a point having Coordinates of X = 2,293,050.97 and Y = 314,731.18; thence East 2500.00 feet to a point having Coordinates of X = 2,295,550.97 and Y = 314,731.18; thence South 2500.00 feet to a point having Coordinates of X = 2,295,550.97 and Y = 312,231.18; thence West 2500.00 feet to the Point of Beginning and containing approximately **5 acres**, all as more particularly outlined on a plat on file in the Office of Mineral Resources, Department of Natural Resources. All bearings, distances and coordinates are based on Louisiana Coordinate System of 1927, (North or South Zone), where applicable.

NOTE: The above description of the Tract nominated for the purpose of acquiring a mineral lease or a geophysical agreement has been provided and corrected, where required, exclusively by the nominating party. Any mineral lease or geophysical agreement selected from this Tract and awarded by the Louisiana State Mineral and Energy Board shall be without warranty of any kind, either express, implied or statutory including, but not limited to, title or the implied warranties of merchantability and fitness for a particular purpose.

An error or omission in the nominating party's Tract description may require that a State mineral lease or geophysical agreement be modified, canceled or abrogated due to the existence of conflicting leases, operating agreements, private claims or other future obligations or conditions within the Tract described. In such case, however, the Louisiana State Mineral and Energy Board shall not be obligated to refund any consideration paid by the Lessee prior to such modification, cancellation or abrogation including, but not limited to, bonuses, rentals and royalties.

NOTE: The State of Louisiana does hereby reserve, and this lease shall be subject to, the imprescriptible right of surface use in the nature of a servitude in favor of the Department of Natural Resources, including its Offices and Commissions, for the sole purpose of implementing, constructing, servicing and maintaining approved coastal zone management and/or restoration projects. Utilization of any and all rights derived under this lease by the mineral lessee, its agents, successors or assigns, shall not interfere with nor hinder the reasonable surface use by the Department of Natural Resources, its Offices or Commissions, as herein above reserved.

Applicant: RIC BAJON & ASSOCIATES

Bidder	Cash Payment	Price/ Acre	Rental	Oil	Gas	Other



TRACT 44753 - Terrebonne Parish, Louisiana

All of the lands now or formerly constituting the beds and bottoms of all water bodies of every nature and description as to which title is vested in the State of Louisiana, together with all islands arising therein and other lands formed by accretion or by reliction, where allowed by law, excepting tax adjudicated lands, and not presently under mineral lease on July 12, 2017, situated in Terrebonne Parish, Louisiana, and more particularly described as follows: Beginning at a point having Coordinates of X = 2,229,886.00 and Y = 245,988.00; thence Southerly approximately 2,558 feet to a point being the Northeast corner of State Lease No. 2906, as amended; thence West approximately 9,100 feet along the Northern boundary of said State Lease No. 2906, as amended, to a point being its Northwest corner, said point being also being on the Eastern boundary of State Lease No. 2395, as amended; thence along the Eastern and Northern boundaries of said State Lease No. 2395, as amended, the following courses: North approximately 780 feet to a point being the Northeast corner of State Lease No. 2395, as amended, and West approximately 1,107 feet to a point having a Coordinate of X = 2,219,741.00; thence North approximately 1,489 feet to a point having Coordinates of X = 2,219,741.00 and Y = 245,699.01; thence North 78 degrees 56 minutes 28 seconds East 5,327.94 feet to a point having Coordinates of X = 2,224,970.00 and Y = 246,721.00; thence South 81 degrees 31 minutes 10 seconds East 4,970.35 feet to the to the point of beginning, **LESS AND EXCEPT** any right, title, and interest in lands owned by and not under lease from the State of Louisiana, on behalf of the Terrebonne Parish School Board, situated in Section 16, Township 20 South, Range 18 East, Terrebonne Parish, Louisiana, contained within the above described tract, containing approximately **50 acres**, all as more particularly outlined on a plat on file in the Office of Mineral Resources, Department of Natural Resources. All bearings, distances and coordinates are based on Louisiana Coordinate System of 1927, (North or South Zone), where applicable.

NOTE: The above description of the Tract nominated for the purpose of acquiring a mineral lease or a geophysical agreement has been provided and corrected, where required, exclusively by the nominating party. Any mineral lease or geophysical agreement selected from this Tract and awarded by the Louisiana State Mineral and Energy Board shall be without warranty of any kind, either express, implied or statutory including, but not limited to, title or the implied warranties of merchantability and fitness for a particular purpose.

An error or omission in the nominating party's Tract description may require that a State mineral lease or geophysical agreement be modified, canceled or abrogated due to the existence of conflicting leases, operating agreements, private claims or other future obligations or conditions within the Tract described. In such case, however, the Louisiana State Mineral and Energy Board shall not be obligated to refund any consideration paid by the Lessee prior to such modification,

cancellation or abrogation including, but not limited to, bonuses, rentals and royalties.

NOTE: The State of Louisiana does hereby reserve, and this lease shall be subject to, the imprescriptible right of surface use in the nature of a servitude in favor of the Department of Natural Resources, including its Offices and Commissions, for the sole purpose of implementing, constructing, servicing and maintaining approved coastal zone management and/or restoration projects. Utilization of any and all rights derived under this lease by the mineral lessee, its agents, successors or assigns, shall not interfere with nor hinder the reasonable surface use by the Department of Natural Resources, its Offices or Commissions, as herein above reserved.

Applicant: ROBERT A. SCHROEDER, INC.

Bidder	Cash Payment	Price/ Acre	Rental	Oil	Gas	Other

