

TRACT 44735 - Portion of Block 26, South Pass Area, Plaquemines Parish, Louisiana

The beds and bottoms of all water bodies belonging to the State of Louisiana located in Block 26, South Pass Area, together with any present lands formed by accretion to the shoreline or islands formed therein, located in Plaquemines Parish, Louisiana, owned by and not presently under mineral lease as of July 12, 2017, from the State of Louisiana, the geographical area of which is more fully described as follows: Beginning at a point within Block 26, South Pass Area, having Coordinates of X = 2,634,255.26 and Y = 120,489.90; thence South 21 degrees 07 minutes 43 seconds West 1,405.62 feet to a point being the Northwest corner of State Lease No. 21686 having Coordinates of X = 2,633,748.58 and Y = 119,178.78; thence along the boundary of said State Lease No. 21686 the following courses: South 21 degrees 07 minutes 43 seconds West 3,534.38 feet to a point having Coordinates of X = 2,632,474.56 and Y = 115,882.00, North 68 degrees 52 minutes 17 seconds West 1,047 feet to a point on the boundary of State Lease No. 2227 having a Coordinate of Y = 116,259.29; thence Northeasterly along the boundary of Said State Lease No. 2227 to a point having a Coordinate of Y = 120,769.73; thence South 68 degrees 52 minutes 17 seconds East 776 feet to a point of beginning, **LESS AND EXCEPT**, any portion of State Lease No. 2227 that may lie within the above described tract, containing approximately **101 acres**, all as more particularly outlined on a plat on file in the Office of Mineral Resources, Department of Natural Resources. All bearings, distances and coordinates are based on Louisiana Coordinate System of 1927, (North or South Zone).

NOTE: The above description of the Tract nominated for the purpose of acquiring a mineral lease or a geophysical agreement has been provided and corrected, where required, exclusively by the nominating party. Any mineral lease or geophysical agreement selected from this Tract and awarded by the Louisiana State Mineral and Energy Board shall be without warranty of any kind, either express, implied or statutory including, but not limited to, title or the implied warranties of merchantability and fitness for a particular purpose.

An error or omission in the nominating party's Tract description may require that a State mineral lease or geophysical agreement be modified, canceled or abrogated due to the existence of conflicting leases, operating agreements, private claims or other future obligations or conditions within the Tract described. In such case, however, the Louisiana State Mineral and Energy Board shall not be obligated to refund any consideration paid by the Lessee prior to such modification, cancellation or abrogation including, but not limited to, bonuses, rentals and royalties.

NOTE: The State of Louisiana does hereby reserve, and this lease shall be subject to, the imprescriptible right of surface use in the nature of a servitude in favor of the Department of Natural Resources, including its Offices and Commissions, for the sole purpose of implementing,

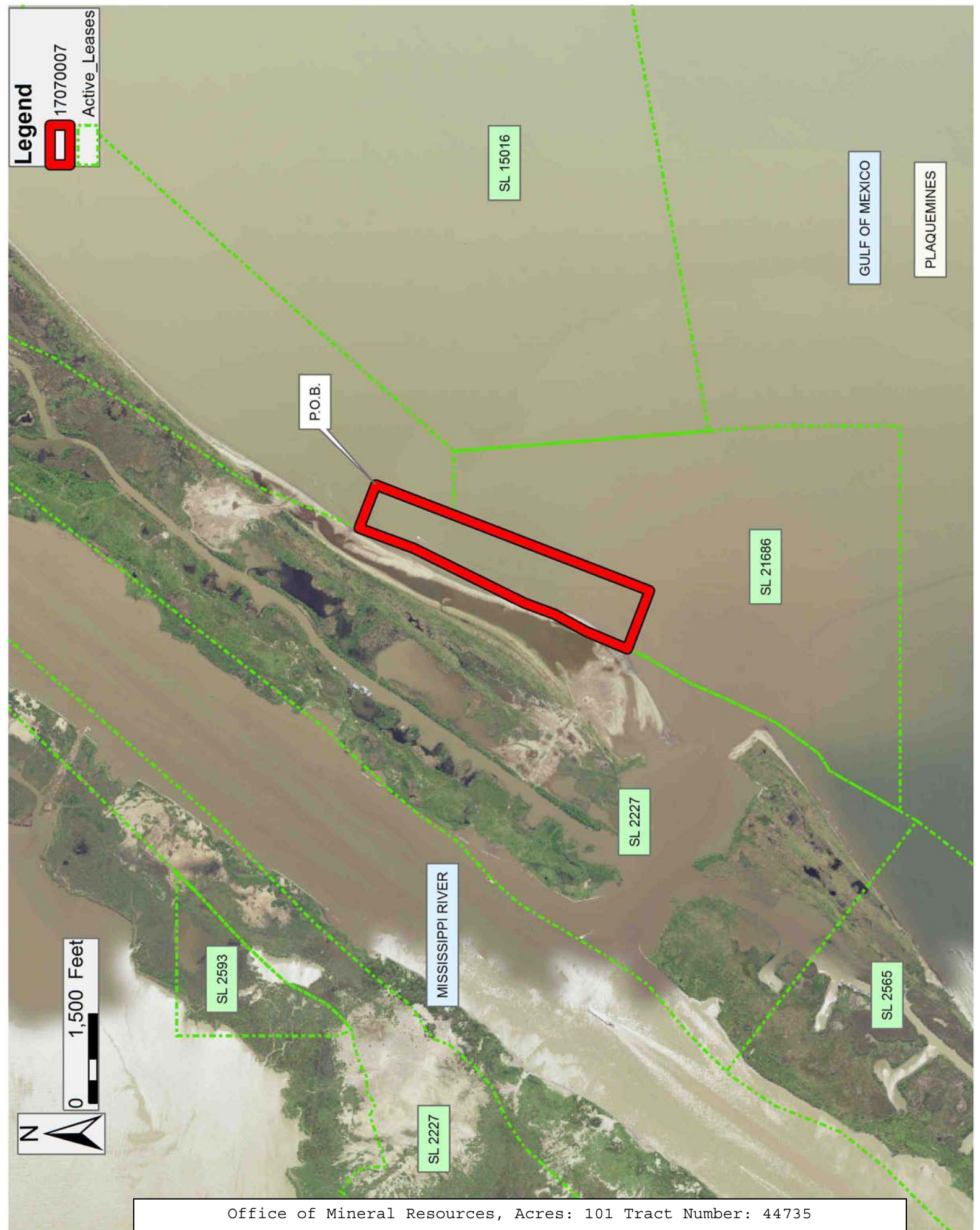
constructing, servicing and maintaining approved coastal zone management and/or restoration projects. Utilization of any and all rights derived under this lease by the mineral lessee, its agents, successors or assigns, shall not interfere with nor hinder the reasonable surface use by the Department of Natural Resources, its Offices or Commissions, as herein above reserved.

Applicant: DELTA LANDS EXPLORATION, INC.

Bidder	Cash Payment	Price/Acre	Rental	Oil	Gas	Other

Legend
17070007
Active_Leases

0 1,500 Feet



P.O.B.

SL 15016

GULF OF MEXICO

PLAQUEMINES

SL 21686

SL 2227

MISSISSIPPI RIVER

SL 2593

SL 2227

SL 2565