

TRACT 44567 - Calcasieu Parish, Louisiana

All of the lands now or formerly constituting the beds and bottoms of all water bodies of every nature and description as to which title is vested in the State of Louisiana, together with all islands arising therein and other lands formed by accretion or by reliction, where allowed by law, excepting tax adjudicated lands, and not presently under mineral lease on July 13, 2016, situated in Calcasieu Parish, Louisiana, and more particularly described as follows: Beginning at a point having Coordinates of X = 1,435,629.41 and Y = 611,100.73; thence East 12,677.99 feet to a point having Coordinates of X = 1,448,307.40 and Y = 611,100.73; thence South 16,600.73 feet to a point having Coordinates of X = 1,448,307.40 and Y = 594,500.00; thence West 12,711.69 feet to a point having Coordinates of; X = 1,435,595.71 and Y = 594,500.00; thence North 3,040.79 feet to the Southeast corner of said State Lease No. 15691, as amended, having Coordinates of X = 1,435,595.71 and Y = 597,540.79; thence North 00 degrees 48 minutes 16 seconds East 2,400.00 feet along the East line of said State Lease No. 15691, as amended to its Northeast corner having Coordinates of X = 1,435,629.41 and Y = 599,940.55; thence North 11,160.18 feet to the point of beginning. (This tract includes only water bottoms claimed and owned by the state and specifically excludes any land which the state may claim or own and to which the mineral rights are vested in the state), containing approximately **217 acres**, all as more particularly outlined on a plat on file in the Office of Mineral Resources, Department of Natural Resources. All bearings, distances and coordinates are based on Louisiana Coordinate System of 1927, (North or South Zone), where applicable.

NOTE: The above description of the Tract nominated for the purpose of acquiring a mineral lease or a geophysical agreement has been provided and corrected, where required, exclusively by the nominating party. Any mineral lease or geophysical agreement selected from this Tract and awarded by the Louisiana State Mineral and Energy Board shall be without warranty of any kind, either express, implied or statutory including, but not limited to, title or the implied warranties of merchantability and fitness for a particular purpose.

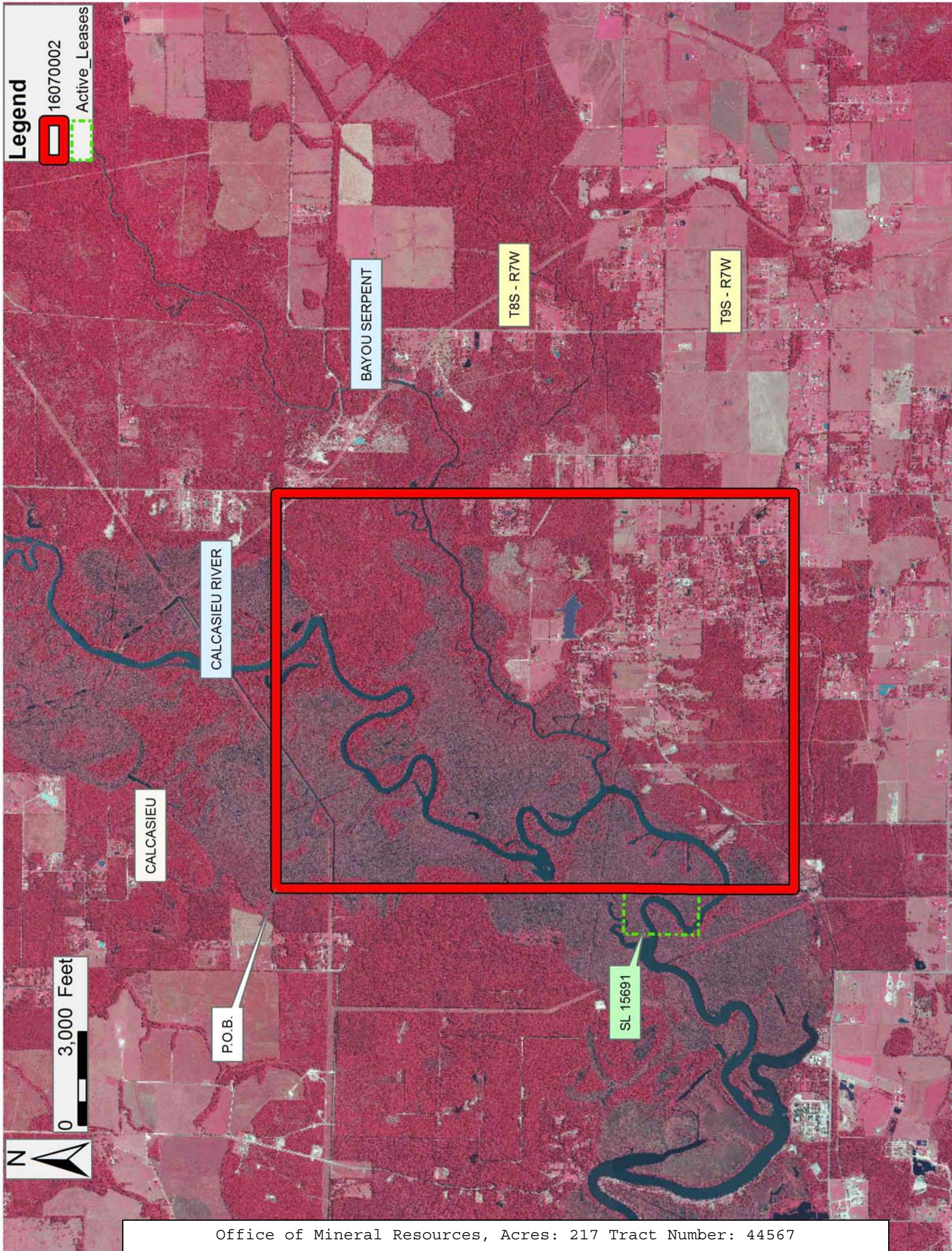
An error or omission in the nominating party's Tract description may require that a State mineral lease or geophysical agreement be modified, canceled or abrogated due to the existence of conflicting leases, operating agreements, private claims or other future obligations or conditions within the Tract described. In such case, however, the Louisiana State Mineral and Energy Board shall not be obligated to refund any consideration paid by the Lessee prior to such modification, cancellation or abrogation including, but not limited to, bonuses, rentals and royalties.

NOTE: A portion of this tract is located on or adjacent to a Louisiana designated Natural and Scenic River. The applicant must obtain authorization from the Louisiana Department of Wildlife and Fisheries,

Scenic Rivers Program prior to initiating any activities within or adjacent to the river, including, but not limited to, crossings by roads and pipelines, well sites, production facilities and water withdrawals.

Applicant: JOSEPH LAWRENCE

Bidder	Cash Payment	Price/ Acre	Rental	Oil	Gas	Other



TRACT 44568 - Plaquemines Parish, Louisiana

All of the lands now or formerly constituting the beds and bottoms of all water bodies of every nature and description as to which title is vested in the State of Louisiana, together with all islands arising therein and other lands formed by accretion or by reliction, where allowed by law, excepting tax adjudicated lands, and not presently under mineral lease on July 13, 2016, situated in Plaquemines Parish, Louisiana, and more particularly described as follows: Beginning at the Southeast corner of State Lease No. 17378, as amended, having Coordinates of X = 2,473,547.44 and Y = 281,909.88; thence along the boundary of said State Lease No. 17378, as amended, the following courses: North 3,271.93 feet to a point having Coordinates of X = 2,473,547.44 and Y = 285,181.81; and North 67 degrees 57 minutes 57 seconds West 1,380.33 feet to it Northeast corner having Coordinates of X = 2,472,267.93 and Y = 285,699.65; thence East 9,032.07 feet to a point having Coordinates of X = 2,481,300.00 and Y = 285,699.65; thence South 3,789.77 feet to a point having Coordinates of X = 2,481,300.00 and Y = 281,909.88; thence West 7,752.56 feet to the point of beginning, **LESS AND EXCEPT** any right, title, and interest in lands owned by and not under lease from the State of Louisiana, on behalf of the Plaquemines Parish School Board, situated in Section 16, Township 19 South, Range 26 East, Plaquemines Parish, Louisiana, contained within the above described tract, containing approximately **370 acres**, all as more particularly outlined on a plat on file in the Office of Mineral Resources, Department of Natural Resources. All bearings, distances and coordinates are based on Louisiana Coordinate System of 1927, (North or South Zone), where applicable.

NOTE: The above description of the Tract nominated for the purpose of acquiring a mineral lease or a geophysical agreement has been provided and corrected, where required, exclusively by the nominating party. Any mineral lease or geophysical agreement selected from this Tract and awarded by the Louisiana State Mineral and Energy Board shall be without warranty of any kind, either express, implied or statutory including, but not limited to, title or the implied warranties of merchantability and fitness for a particular purpose.

An error or omission in the nominating party's Tract description may require that a State mineral lease or geophysical agreement be modified, canceled or abrogated due to the existence of conflicting leases, operating agreements, private claims or other future obligations or conditions within the Tract described. In such case, however, the Louisiana State Mineral and Energy Board shall not be obligated to refund any consideration paid by the Lessee prior to such modification, cancellation or abrogation including, but not limited to, bonuses, rentals and royalties.

NOTE: The State of Louisiana does hereby reserve, and this lease shall be subject to, the imprescriptible right of surface use in the nature of a servitude in favor of the Department of Natural Resources, including its

Offices and Commissions, for the sole purpose of implementing, constructing, servicing and maintaining approved coastal zone management and/or restoration projects. Utilization of any and all rights derived under this lease by the mineral lessee, its agents, successors or assigns, shall not interfere with nor hinder the reasonable surface use by the Department of Natural Resources, its Offices or Commissions, as herein above reserved.

Applicant: CHARLESTON ENERGY INC.

Bidder	Cash Payment	Price/ Acre	Rental	Oil	Gas	Other

