

TRACT 41043 - Caddo and De Soto Parishes, Louisiana

All of the lands now or formerly constituting the beds and bottoms of all water bodies of every nature and description as to which title is vested in the State of Louisiana, together with all islands arising therein and other lands formed by accretion or by reliction, where allowed by law, excepting tax adjudicated lands, and not presently under mineral lease on July 8, 2009, situated in Caddo and De Soto Parishes, Louisiana, and more particularly described as follows: Beginning at a point on the South boundary of State Lease No. 18396 having Coordinates of X = 1,653,961.51 and Y = 579,300.00; thence East 1,112.33 feet along the South boundary of said State Lease No. 18396 to a point having Coordinates of X = 1,655,073.84 and Y = 579,300.00; thence South 792.35 feet to a point on the Northern boundary of State Lease No. 17216, as amended, having Coordinates of X = 1,655,073.84 and Y = 578,507.65; thence along the boundary of said State Lease No. 17216 the following courses: North 89 degrees 20 minutes 52 seconds West 500.00 feet to a point having Coordinates of X = 1,654,573.87 and Y = 578,513.34; North 38 degrees 59 minutes 23 seconds West 178.59 feet to a point having Coordinates of X = 1,654,461.51 and Y = 578,652.15 and North 89 degrees 44 minutes 00 seconds West 500.00 feet to a point having Coordinates of X = 1,653,961.51 and Y = 578,654.48; thence North 645.52 feet to the point of beginning, containing approximately **0.929 acres**, all as more particularly outlined on a plat on file in the Office of Mineral Resources, Department of Natural Resources. All bearings, distances and coordinates are based on Louisiana Coordinate System of 1927, (North or South Zone), where applicable.

NOTE: The above description of the Tract nominated for lease has been provided and corrected, where required, exclusively by the nomination party. Any mineral lease selected from this Tract and awarded by the Louisiana State Mineral Board shall be without warranty of any kind, either express, implied, or statutory, including, but not limited to, the implied warranties of merchantability and fitness for a particular purpose. Should the mineral lease awarded by the Louisiana State Mineral Board be subsequently modified, cancelled or abrogated due to the existence of conflicting leases, operating agreements, private claims or other future obligations or conditions which may affect all or any portion of the leased Tract, it shall not relieve the Lessee of the obligation to pay any bonus due thereon to the Louisiana State Mineral Board, nor shall the Louisiana State Mineral Board be obligated to refund any consideration paid by the Lessor prior to such modification, cancellation, or abrogation, including, but not limited to, bonuses, rentals and royalties.

NOTE: This tract is located in Section 29, Township 15 North, Range 12 West in Caspiana Field in DeSoto and Caddo Parishes, and is included in the office of Conservation Unit created for the CV RA SUG, Order No. 191-A. The tract contains .929 acres in the CV RA SUG and is shown as Tract No. 5 on the official survey plat for the CV RA SUG on file with the Office of Conservation. Total production from the unit from June 2007 through March 2009 is 1,400,348 Mcf of Gas.

NOTE: The Office of Mineral Resources will require a minimum bonus of \$500 per acre and a minimum royalty of 25%.

Applicant: STAFF OFFICE OF MINERAL RESOURCES

Bidder	Cash Payment	Price/Acre	Rental	Oil	Gas	Other

Legend



CV RA SU G

Active_Leases

Counties

DOQQ2004



CV RA SU G UNIT
Order No. 191-A
Docket No. 75-28

T15N - R12W

BAYOU PIERRE

DE SOTO PARISH

CADDO PARISH

SL 18396

P.O.B.

SL 17217

SL 17216

CANNISNIA LAKE

TRACT 41044 - Lasalle Parish, Louisiana

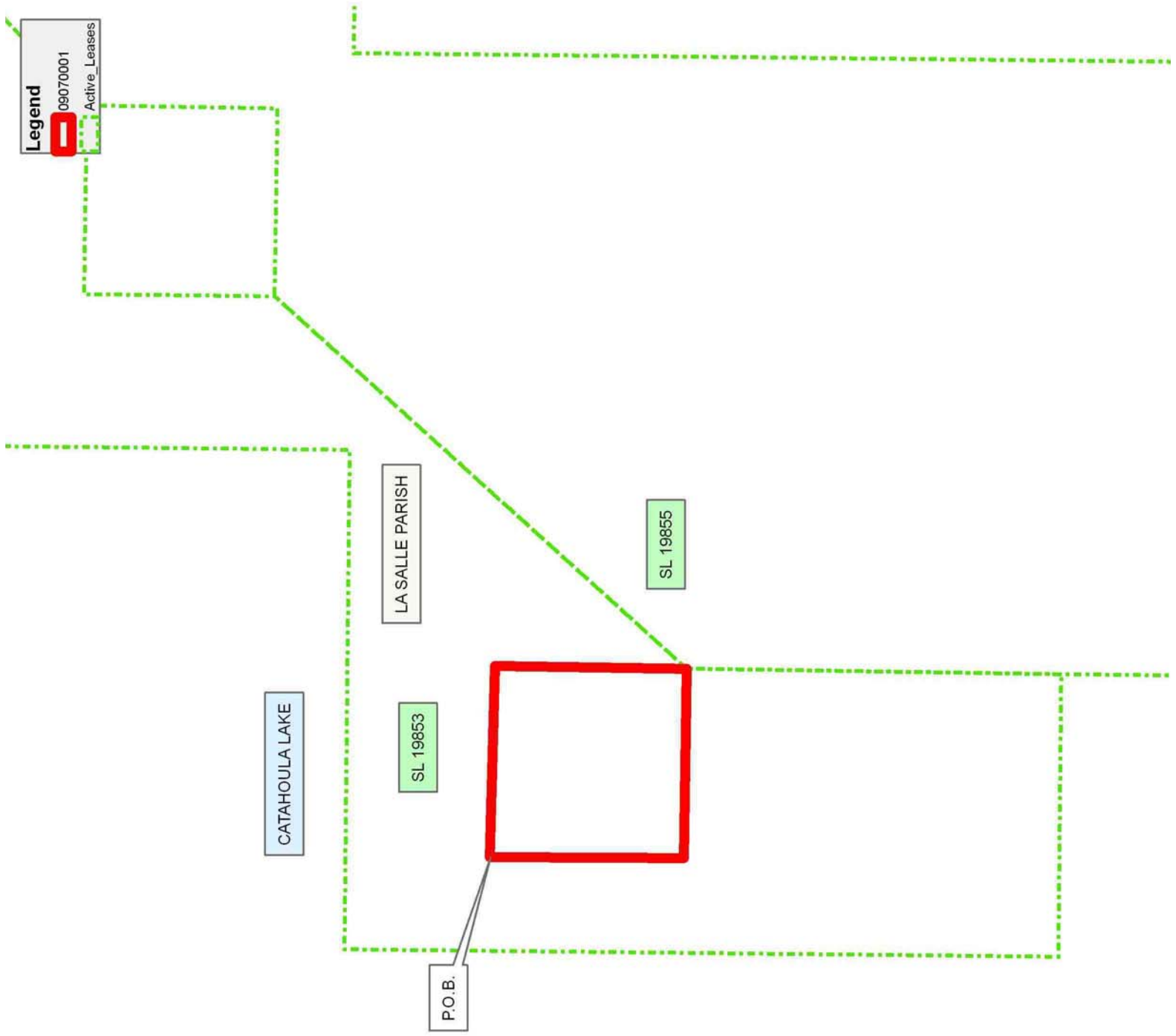
All of the lands now or formerly constituting the beds and bottoms of all water bodies of every nature and description as to which title is vested in the State of Louisiana, together with all islands arising therein and other lands formed by accretion or by reliction, where allowed by law, excepting tax adjudicated lands, and not presently under mineral lease on July 8, 2009, situated in Lasalle Parish, Louisiana, and more particularly described as follows: Commencing at a point on the Western boundary of State Lease No. 19853 having Coordinates of X = 2,128,870.25 and Y = 317,106.93; thence Easterly approximately 657 feet to the Point of Beginning; thence Easterly approximately 1,342 feet to a point; thence Southerly approximately 1,342 feet to a point on the Eastern boundary of said State Lease No. 19853, also being a point on the Western boundary of State Lease No. 19855; thence Westerly approximately 1,326 feet to a point; thence Northerly approximately 1,358 feet to the Point of Beginning, containing approximately **41 acres**, all as more particularly outlined on a plat on file in the Office of Mineral Resources, Department of Natural Resources. All bearings, distances and coordinates are based on Louisiana Coordinate System of 1927, (North or South Zone), where applicable.

NOTE: The above description of the Tract nominated for lease has been provided and corrected, where required, exclusively by the nomination party. Any mineral lease selected from this Tract and awarded by the Louisiana State Mineral Board shall be without warranty of any kind, either express, implied, or statutory, including, but not limited to, the implied warranties of merchantability and fitness for a particular purpose. Should the mineral lease awarded by the Louisiana State Mineral Board be subsequently modified, cancelled or abrogated due to the existence of conflicting leases, operating agreements, private claims or other future obligations or conditions which may affect all or any portion of the leased Tract, it shall not relieve the Lessee of the obligation to pay any bonus due thereon to the Louisiana State Mineral Board, nor shall the Louisiana State Mineral Board be obligated to refund any consideration paid by the Lessor prior to such modification, cancellation, or abrogation, including, but not limited to, bonuses, rentals and royalties.

Bidder	Cash Payment	Price/Acre	Rental	Oil	Gas	Other

Applicant: TRIDIMENSION ENERGY LP

Legend
09070001
Active_Leases



0 1,000 Feet



TRACT 41045 - St. Landry Parish, Louisiana

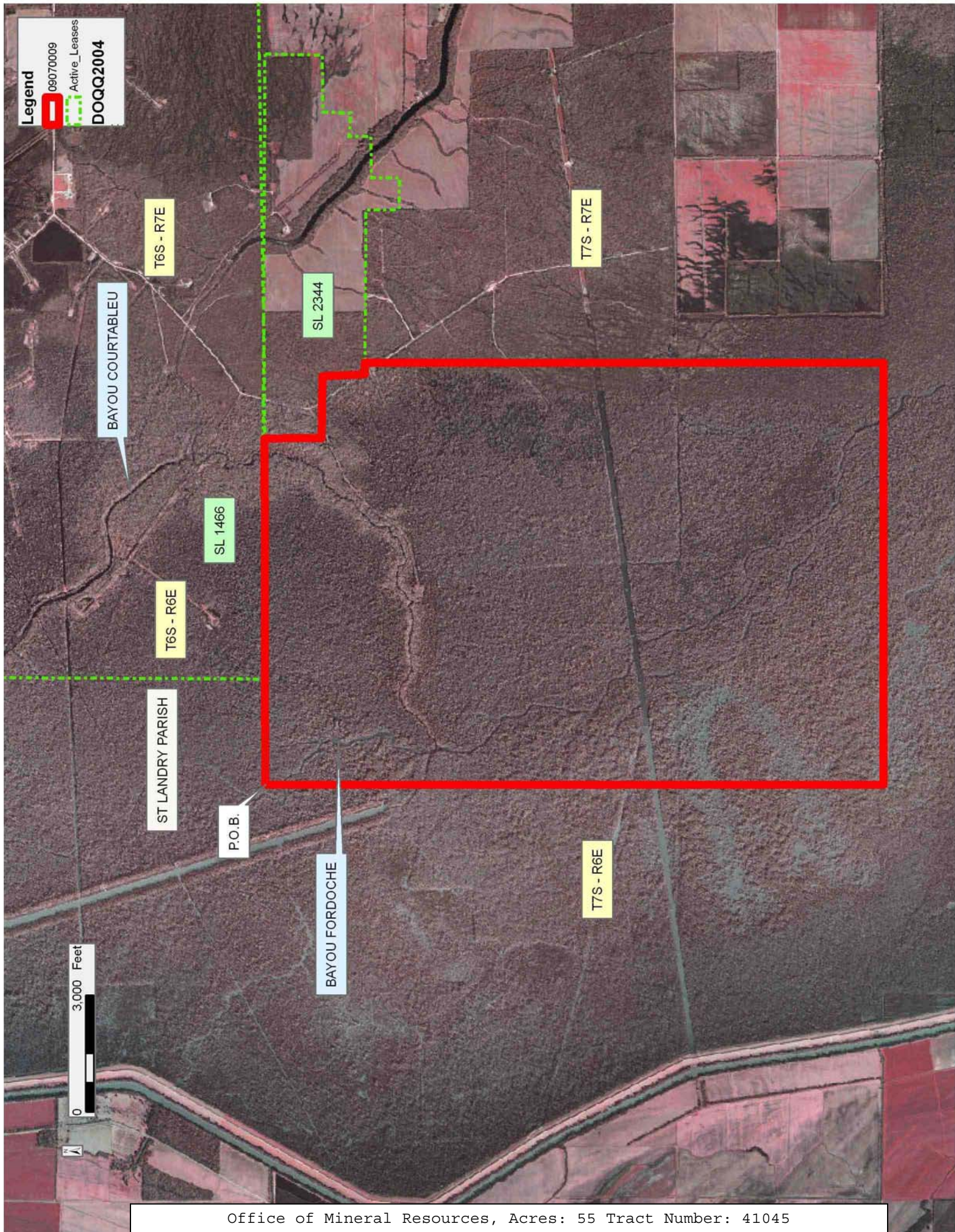
All of the lands now or formerly constituting the beds and bottoms of all water bodies of every nature and description as to which title is vested in the State of Louisiana, together with all islands arising therein and other lands formed by accretion or by reliction, where allowed by law, excepting tax adjudicated lands, and not presently under mineral lease on July 8, 2009, situated in St. Landry Parish, Louisiana, and more particularly described as follows: Beginning at a point having Coordinates of X = 1,841,234.00 and Y = 660,241.00; thence Easterly approximately 2,717 feet to the Southwest corner of State Lease No. 1466; thence Easterly approximately 6,198 feet along the Southern boundary of said State Lease No. 1466 to the Northwest corner of State Lease No. 2344, as amended; thence along the boundary of said State Lease No. 2344 the following courses: Southerly approximately 1,472 feet, Easterly approximately 1,591 feet, Southerly approximately 1,084 feet and Easterly approximately 305 feet to a point of intersection with a North-South line having a Coordinate of X = 1,852,098.00; thence South approximately 13,350 feet along said line to a point having Coordinates of X = 1,852,098.00 and Y = 644,332.00; thence West 10,864.00 feet to a point having Coordinates of X = 1,841,234.00 and Y = 644,332.00; thence North 15,909.00 feet to the point of beginning, containing approximately **55 acres**, all as more particularly outlined on a plat on file in the Office of Mineral Resources, Department of Natural Resources. All bearings, distances and coordinates are based on Louisiana Coordinate System of 1927, (North or South Zone), where applicable.

NOTE: The above description of the Tract nominated for lease has been provided and corrected, where required, exclusively by the nomination party. Any mineral lease selected from this Tract and awarded by the Louisiana State Mineral Board shall be without warranty of any kind, either express, implied, or statutory, including, but not limited to, the implied warranties of merchantability and fitness for a particular purpose. Should the mineral lease awarded by the Louisiana State Mineral Board be subsequently modified, cancelled or abrogated due to the existence of conflicting leases, operating agreements, private claims or other future obligations or conditions which may affect all or any portion of the leased Tract, it shall not relieve the Lessee of the obligation to pay any bonus due thereon to the Louisiana State Mineral Board, nor shall the Louisiana State Mineral Board be obligated to refund any consideration paid by the Lessor prior to such modification, cancellation, or abrogation, including, but not limited to, bonuses, rentals and royalties.

Applicant: MMB ENERGY, L.L.C.

Bidder	Cash Payment	Price/Acre	Rental	Oil	Gas	Other

Legend
09070009
Active_Leases
DOQQ2004



TRACT 41046 - St. Landry Parish, Louisiana

All of the lands now or formerly constituting the beds and bottoms of all water bodies of every nature and description as to which title is vested in the State of Louisiana, together with all islands arising therein and other lands formed by accretion or by reliction, where allowed by law, excepting tax adjudicated lands, and not presently under mineral lease on July 8, 2009, situated in St. Landry Parish, Louisiana, and more particularly described as follows: Beginning at a point having Coordinates of X = 1,862,914.00 and Y = 644,332.00; thence South 10,572.00 feet to a point having Coordinates of X = 1,862,914.00 and Y = 633,760.00; thence West 16,371.00 feet to a point having Coordinates of X = 1,846,543.00 and Y = 633,760.00; thence North 10,572.00 feet to a point having Coordinates of X = 1,846,543.00 and Y = 644,332.00; thence East 16,371.00 feet to the point of beginning containing approximately **39 acres**, all as more particularly outlined on a plat on file in the Office of Mineral Resources, Department of Natural Resources. All bearings, distances and coordinates are based on Louisiana Coordinate System of 1927, (North or South Zone), where applicable.

NOTE: The above description of the Tract nominated for lease has been provided and corrected, where required, exclusively by the nomination party. Any mineral lease selected from this Tract and awarded by the Louisiana State Mineral Board shall be without warranty of any kind, either express, implied, or statutory, including, but not limited to, the implied warranties of merchantability and fitness for a particular purpose. Should the mineral lease awarded by the Louisiana State Mineral Board be subsequently modified, cancelled or abrogated due to the existence of conflicting leases, operating agreements, private claims or other future obligations or conditions which may affect all or any portion of the leased Tract, it shall not relieve the Lessee of the obligation to pay any bonus due thereon to the Louisiana State Mineral Board, nor shall the Louisiana State Mineral Board be obligated to refund any consideration paid by the Lessor prior to such modification, cancellation, or abrogation, including, but not limited to, bonuses, rentals and royalties.

Applicant: MMB ENERGY, L.L.C.

Bidder	Cash Payment	Price/Acre	Rental	Oil	Gas	Other

Legend
09070010
DOQQ2004

P.O.B.

T7S - R7E

ST LANDRY PARISH

T7S - R6E

0 2,000 Feet



LITTLE BAYOU FORDOCHE

BAYOU FORDOCHE

TRACT 41047 - St. Landry and St. Martin Parishes, Louisiana

All of the lands now or formerly constituting the beds and bottoms of all water bodies of every nature and description as to which title is vested in the State of Louisiana, together with all islands arising therein and other lands formed by accretion or by reliction, where allowed by law, excepting tax adjudicated lands, and not presently under mineral lease on July 8, 2009, situated in St. Landry and St. Martin Parishes, Louisiana, and more particularly described as follows: Beginning at a point having Coordinates of X = 1,862,914.00 and Y = 633,760.00; thence South 10,665.00 feet to a point having Coordinates of X = 1,862,914.00 and Y = 623,095.00; thence West 10,814.00 feet to a point having Coordinates of X = 1,852,100.00 and Y = 623,095.00; thence North 10,665.00 feet to a point having Coordinates of X = 1,852,100.00 and Y = 633,760.00; thence East 10,814.00 feet to the point of beginning, containing approximately **102 acres**, all as more particularly outlined on a plat on file in the Office of Mineral Resources, Department of Natural Resources. All bearings, distances and coordinates are based on Louisiana Coordinate System of 1927, (North or South Zone), where applicable.

NOTE: The above description of the Tract nominated for lease has been provided and corrected, where required, exclusively by the nomination party. Any mineral lease selected from this Tract and awarded by the Louisiana State Mineral Board shall be without warranty of any kind, either express, implied, or statutory, including, but not limited to, the implied warranties of merchantability and fitness for a particular purpose. Should the mineral lease awarded by the Louisiana State Mineral Board be subsequently modified, cancelled or abrogated due to the existence of conflicting leases, operating agreements, private claims or other future obligations or conditions which may affect all or any portion of the leased Tract, it shall not relieve the Lessee of the obligation to pay any bonus due thereon to the Louisiana State Mineral Board, nor shall the Louisiana State Mineral Board be obligated to refund any consideration paid by the Lessor prior to such modification, cancellation, or abrogation, including, but not limited to, bonuses, rentals and royalties.

Applicant: MMB ENERGY, L.L.C.

Bidder	Cash Payment	Price/Acre	Rental	Oil	Gas	Other

Legend

- 09070011
- Counties
- DOQQ2004

T7S - R7E

LITTLE BAYOU FORDOCHE

LOST BAYOU

ST MARTIN PARISH

T8S - R7E

BAYOU FUSILIER OF SWAMPS

P.O.B.

ST LANDRY PARISH

BAYOU FORDOCHE

T7S - R6E

BAYOU RACCACIOUS

T8S - R6E



TRACT 41048 - St. John The Baptist Parish, Louisiana

All of the lands now or formerly constituting the beds and bottoms of all water bodies of every nature and description as to which title is vested in the State of Louisiana, together with all islands arising therein and other lands formed by accretion or by reliction, where allowed by law, excepting tax adjudicated lands, and not presently under mineral lease on July 8, 2009, situated in St. John The Baptist Parish, Louisiana, and more particularly described as follows: Beginning at a point having Coordinates of X = 2,240,500.00 and Y = 506,200.00; thence East 6,000.00 feet to a point having Coordinates of X = 2,246,500.00 and Y = 506,200.00; thence South 5,300.00 feet to a point having Coordinates of X = 2,246,500.00 and Y = 500,900.00; thence West 6,000.00 feet to a point having Coordinates of X = 2,240,500.00 and Y = 500,900.00; thence North 5,300.00 feet to the point of beginning, containing approximately **366 acres**, all as more particularly outlined on a plat on file in the Office of Mineral Resources, Department of Natural Resources. All bearings, distances and coordinates are based on Louisiana Coordinate System of 1927, (North or South Zone), where applicable.

NOTE: The above description of the Tract nominated for lease has been provided and corrected, where required, exclusively by the nomination party. Any mineral lease selected from this Tract and awarded by the Louisiana State Mineral Board shall be without warranty of any kind, either express, implied, or statutory, including, but not limited to, the implied warranties of merchantability and fitness for a particular purpose. Should the mineral lease awarded by the Louisiana State Mineral Board be subsequently modified, cancelled or abrogated due to the existence of conflicting leases, operating agreements, private claims or other future obligations or conditions which may affect all or any portion of the leased Tract, it shall not relieve the Lessee of the obligation to pay any bonus due thereon to the Louisiana State Mineral Board, nor shall the Louisiana State Mineral Board be obligated to refund any consideration paid by the Lessor prior to such modification, cancellation, or abrogation, including, but not limited to, bonuses, rentals and royalties.

NOTE: The Office of Mineral Resources will require a minimum bonus of \$175 per acre and a minimum royalty of 20.5%.

NOTE: The State of Louisiana does hereby reserve, and this lease shall be subject to, the imprescriptible right of surface use in the nature of a servitude in favor of the Department of Natural Resources, including its Offices and Commissions, for the sole purpose of implementing, constructing, servicing and maintaining approved coastal zone management and/or restoration projects. Utilization of any and all rights derived under this lease by the mineral lessee, its agents, successors or assigns, shall not interfere with nor hinder the reasonable surface use by the Department of Natural Resources, its Offices or Commissions, as herein above reserved.

Applicant: OFFICE OF MINERAL RESOURCES

Bidder	Cash Payment	Price/Acre	Rental	Oil	Gas	Other

Legend
09070049
DOQQ2004

ST JOHN THE BAPTIST PARISH

MISSISSIPPI RIVER

P.O.B.

0 2,000 Feet



TRACT 41049 - St. John The Baptist Parish, Louisiana

All of the lands now or formerly constituting the beds and bottoms of all water bodies of every nature and description as to which title is vested in the State of Louisiana, together with all islands arising therein and other lands formed by accretion or by reliction, where allowed by law, excepting tax adjudicated lands, and not presently under mineral lease on July 8, 2009, situated in St. John The Baptist Parish, Louisiana, and more particularly described as follows: Beginning at a point having Coordinates of X = 2,233,500.00 and Y = 506,200.00; thence East 7,000.00 feet to a point having Coordinates of X = 2,240,500.00 and Y = 506,200.00; thence South 5,300.00 feet to a point having Coordinates of X = 2,240,500.00 and Y = 500,900.00; thence West 7,000.00 feet to a point having Coordinates of X = 2,233,500.00 and Y = 500,900.00; thence North 5,300.00 feet to the point of beginning, containing approximately **427 acres**, all as more particularly outlined on a plat on file in the Office of Mineral Resources, Department of Natural Resources. All bearings, distances and coordinates are based on Louisiana Coordinate System of 1927, (North or South Zone), where applicable.

NOTE: The above description of the Tract nominated for lease has been provided and corrected, where required, exclusively by the nomination party. Any mineral lease selected from this Tract and awarded by the Louisiana State Mineral Board shall be without warranty of any kind, either express, implied, or statutory, including, but not limited to, the implied warranties of merchantability and fitness for a particular purpose. Should the mineral lease awarded by the Louisiana State Mineral Board be subsequently modified, cancelled or abrogated due to the existence of conflicting leases, operating agreements, private claims or other future obligations or conditions which may affect all or any portion of the leased Tract, it shall not relieve the Lessee of the obligation to pay any bonus due thereon to the Louisiana State Mineral Board, nor shall the Louisiana State Mineral Board be obligated to refund any consideration paid by the Lessor prior to such modification, cancellation, or abrogation, including, but not limited to, bonuses, rentals and royalties.

NOTE: The Office of Mineral Resources will require a minimum bonus of \$175 per acre and a minimum royalty of 20.5%.

NOTE: The State of Louisiana does hereby reserve, and this lease shall be subject to, the imprescriptible right of surface use in the nature of a servitude in favor of the Department of Natural Resources, including its Offices and Commissions, for the sole purpose of implementing, constructing, servicing and maintaining approved coastal zone management and/or restoration projects. Utilization of any and all rights derived under this lease by the mineral lessee, its agents, successors or assigns, shall not interfere with nor hinder the reasonable surface use by the Department of Natural Resources, its Offices or Commissions, as herein above reserved.

Applicant: OFFICE OF MINERAL RESOURCES

Bidder	Cash Payment	Price/Acre	Rental	Oil	Gas	Other

Legend
09070048
DOQQ2004

ST JOHN THE BAPTIST PARISH

MISSISSIPPI RIVER

P.O.B.

0 2,000 Feet

TRACT 41050 - St. John The Baptist Parish, Louisiana

All of the lands now or formerly constituting the beds and bottoms of all water bodies of every nature and description as to which title is vested in the State of Louisiana, together with all islands arising therein and other lands formed by accretion or by reliction, where allowed by law, excepting tax adjudicated lands, and not presently under mineral lease on July 8, 2009, situated in St. John The Baptist Parish, Louisiana, and more particularly described as follows: Beginning at a point having Coordinates of X = 2,228,900.00 and Y = 504,725.00; thence East 4,600.00 feet to a point having Coordinates of X = 2,233,500.00 and Y = 504,725.00; thence South 8,000.00 feet to a point having Coordinates of X = 2,233,500.00 and Y = 496,725.00; thence West 4,600.00 feet to a point having Coordinates of X = 2,228,900.00 and Y = 496,725.00; thence North 8,000.00 feet to the point of beginning, containing approximately **316 acres**, all as more particularly outlined on a plat on file in the Office of Mineral Resources, Department of Natural Resources. All bearings, distances and coordinates are based on Louisiana Coordinate System of 1927, (North or South Zone), where applicable.

NOTE: The above description of the Tract nominated for lease has been provided and corrected, where required, exclusively by the nomination party. Any mineral lease selected from this Tract and awarded by the Louisiana State Mineral Board shall be without warranty of any kind, either express, implied, or statutory, including, but not limited to, the implied warranties of merchantability and fitness for a particular purpose. Should the mineral lease awarded by the Louisiana State Mineral Board be subsequently modified, cancelled or abrogated due to the existence of conflicting leases, operating agreements, private claims or other future obligations or conditions which may affect all or any portion of the leased Tract, it shall not relieve the Lessee of the obligation to pay any bonus due thereon to the Louisiana State Mineral Board, nor shall the Louisiana State Mineral Board be obligated to refund any consideration paid by the Lessor prior to such modification, cancellation, or abrogation, including, but not limited to, bonuses, rentals and royalties.

NOTE: The Office of Mineral Resources will require a minimum bonus of \$175 per acre and a minimum royalty of 20.5%.

NOTE: The State of Louisiana does hereby reserve, and this lease shall be subject to, the imprescriptible right of surface use in the nature of a servitude in favor of the Department of Natural Resources, including its Offices and Commissions, for the sole purpose of implementing, constructing, servicing and maintaining approved coastal zone management and/or restoration projects. Utilization of any and all rights derived under this lease by the mineral lessee, its agents, successors or assigns, shall not interfere with nor hinder the reasonable surface use by the Department of Natural Resources, its Offices or Commissions, as herein above reserved.

Applicant: OFFICE OF MINERAL RESOURCES

Bidder	Cash Payment	Price/Acre	Rental	Oil	Gas	Other

Legend
09070050
DOQQ2004

MISSISSIPPI RIVER

ST JOHN THE BAPTIST PARISH

P.O.B.

0 2,000 Feet

TRACT 41051 - Plaquemines and St. Bernard Parishes, Louisiana

All of the lands now or formerly constituting the beds and bottoms of all water bodies of every nature and description as to which title is vested in the State of Louisiana, together with all islands arising therein and other lands formed by accretion or by reliction, where allowed by law, excepting tax adjudicated lands, and not presently under mineral lease on July 8, 2009, situated in Plaquemines and St. Bernard Parishes, Louisiana, and more particularly described as follows: Beginning at an interior corner of State Lease No. 19638 having Coordinates of X = 2,483,074.00 and Y = 410,366.00; thence along the boundary of said State Lease No. 19638 the following courses: North 1,424.59 feet and North 64 degrees 51 minutes 38 seconds East 1,656.95 feet to its Northernmost Northeast corner, also being the Northernmost Southwest corner of State Lease No. 19189 having Coordinates of X = 2,484,574.00 and Y = 412,494.50; thence along the boundary of said State Lease No. 19189 the following courses: North 64 degrees 51 minutes 38 seconds East 2,807.46 feet and South 3,321.17 feet to its Southernmost Southwest corner, also being the Southernmost Northeast corner of said State Lease No. 19638 having Coordinates of X = 2,487,115.53 and Y = 410,366.00; thence West 4,041.53 feet along the boundary of said State Lease No. 19638 to the point of beginning, containing approximately **205 acres**, all as more particularly outlined on a plat on file in the Office of Mineral Resources, Department of Natural Resources. All bearings, distances and coordinates are based on Louisiana Coordinate System of 1927, (North or South Zone), where applicable.

NOTE: The above description of the Tract nominated for lease has been provided and corrected, where required, exclusively by the nomination party. Any mineral lease selected from this Tract and awarded by the Louisiana State Mineral Board shall be without warranty of any kind, either express, implied, or statutory, including, but not limited to, the implied warranties of merchantability and fitness for a particular purpose. Should the mineral lease awarded by the Louisiana State Mineral Board be subsequently modified, cancelled or abrogated due to the existence of conflicting leases, operating agreements, private claims or other future obligations or conditions which may affect all or any portion of the leased Tract, it shall not relieve the Lessee of the obligation to pay any bonus due thereon to the Louisiana State Mineral Board, nor shall the Louisiana State Mineral Board be obligated to refund any consideration paid by the Lessor prior to such modification, cancellation, or abrogation, including, but not limited to, bonuses, rentals and royalties.

NOTE: The Office of Mineral Resources will require a minimum bonus of \$327 per acre and a minimum royalty of 25%.

NOTE: The State of Louisiana does hereby reserve, and this lease shall be subject to, the imprescriptible right of surface use in the nature of a servitude in favor of the Department of Natural Resources, including its Offices and Commissions, for the sole purpose of implementing, constructing, servicing and maintaining approved coastal zone management

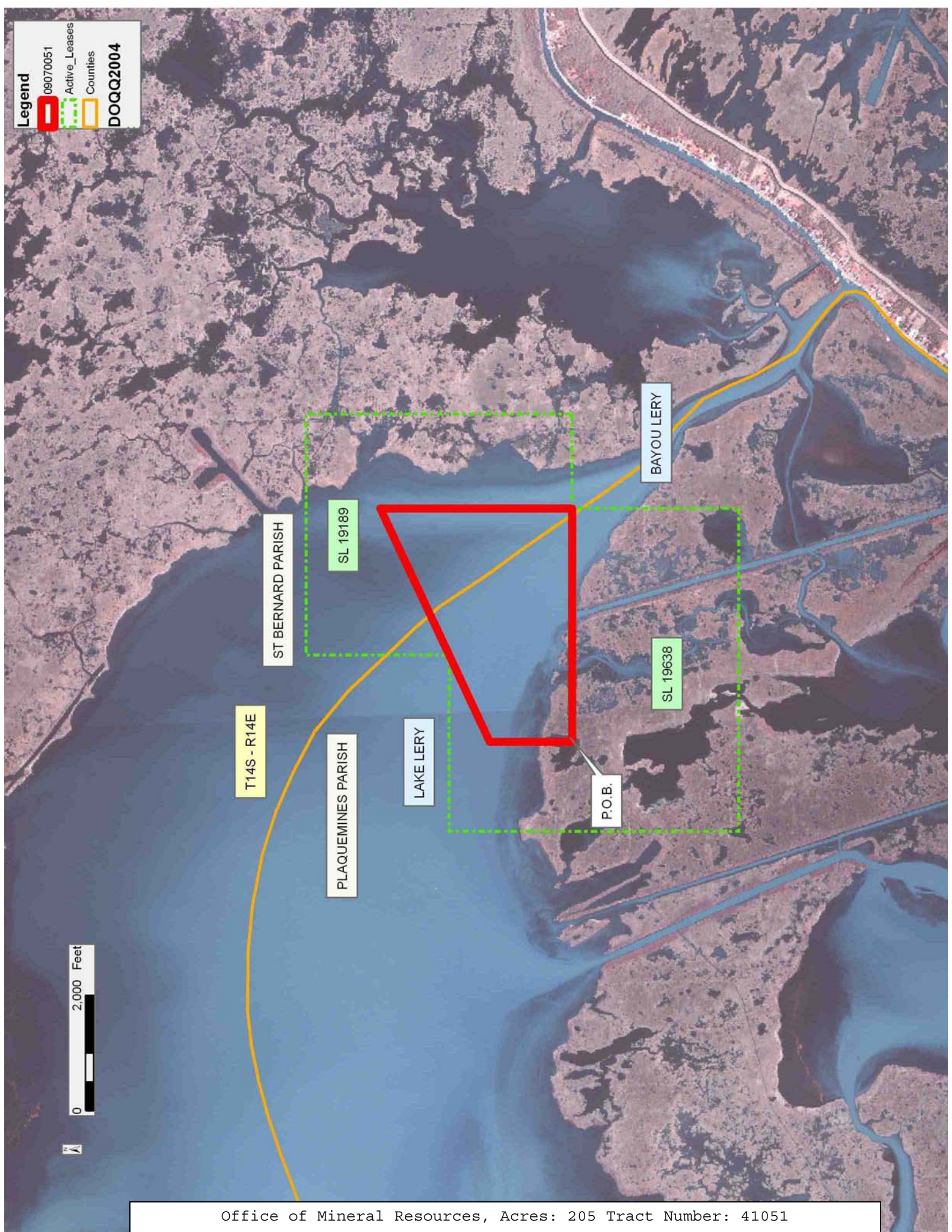
and/or restoration projects. Utilization of any and all rights derived under this lease by the mineral lessee, its agents, successors or assigns, shall not interfere with nor hinder the reasonable surface use by the Department of Natural Resources, its Offices or Commissions, as herein above reserved.

Applicant: OFFICE OF MINERAL RESOURCES

Bidder	Cash Payment	Price/Acre	Rental	Oil	Gas	Other

Legend

- 09070051
- Active_Leases
- Counties
- DOQQ2004



TRACT 41052 - St. Mary Parish, Louisiana

All of the lands now or formerly constituting the beds and bottoms of all water bodies of every nature and description as to which title is vested in the State of Louisiana, together with all islands arising therein and other lands formed by accretion or by reliction, where allowed by law, excepting tax adjudicated lands, and not presently under mineral lease on July 8, 2009, situated in St. Mary Parish, Louisiana, and more particularly described as follows: Beginning at a point having Coordinates of X = 1,944,772.00 and Y = 407,200.00; thence East 14,342.67 feet to a point having Coordinates of X = 1,959,114.67 and Y = 407,200.00; thence South 13,720.00 feet to a point having Coordinates of X = 1,959,114.67 and Y = 393,480.00; thence West 14,342.67 feet to a point having Coordinates of X = 1,944,772.00 and Y = 393,480.00; thence North 13,720.00 feet to the point of beginning, containing approximately **92 acres**, all as more particularly outlined on a plat on file in the Office of Mineral Resources, Department of Natural Resources. All bearings, distances and coordinates are based on Louisiana Coordinate System of 1927, (North or South Zone), where applicable.

NOTE: The above description of the Tract nominated for lease has been provided and corrected, where required, exclusively by the nomination party. Any mineral lease selected from this Tract and awarded by the Louisiana State Mineral Board shall be without warranty of any kind, either express, implied, or statutory, including, but not limited to, the implied warranties of merchantability and fitness for a particular purpose. Should the mineral lease awarded by the Louisiana State Mineral Board be subsequently modified, cancelled or abrogated due to the existence of conflicting leases, operating agreements, private claims or other future obligations or conditions which may affect all or any portion of the leased Tract, it shall not relieve the Lessee of the obligation to pay any bonus due thereon to the Louisiana State Mineral Board, nor shall the Louisiana State Mineral Board be obligated to refund any consideration paid by the Lessor prior to such modification, cancellation, or abrogation, including, but not limited to, bonuses, rentals and royalties.

NOTE: The State of Louisiana does hereby reserve, and this lease shall be subject to, the imprescriptible right of surface use in the nature of a servitude in favor of the Department of Natural Resources, including its Offices and Commissions, for the sole purpose of implementing, constructing, servicing and maintaining approved coastal zone management and/or restoration projects. Utilization of any and all rights derived under this lease by the mineral lessee, its agents, successors or assigns, shall not interfere with nor hinder the reasonable surface use by the Department of Natural Resources, its Offices or Commissions, as herein above reserved.

Applicant: ROBERT A. SCHROEDER, INC.

Bidder	Cash Payment	Price/Acre	Rental	Oil	Gas	Other

ST MARY PARISH

BAYOU TECHE

P.O.B.

T15S - R9E

0 3,000 Feet

