

TRACT 41022 - Portion of Block 4, West Cameron Area, Revised, Cameron Parish, Louisiana

The beds and bottoms of all water bodies belonging to the State of Louisiana located in Block 4, West Cameron Area, Revised, together with any present lands formed by accretion to the shoreline or islands formed therein, located in Cameron Parish, Louisiana, owned by and not presently under mineral lease as of July 8, 2009, from the State of Louisiana, the geographical area of which is more fully described as follows: Beginning at a point on the South line of Block 4, West Cameron Area, Revised, having Coordinates of X = 1,384,500.00 and Y = 393,790.24; thence West 7,204.58 feet along the South line of said of said Block 4 to its Southwest corner having Coordinates of X = 1,377,295.42 and Y = 393,790.24; thence North 14,287.79 feet along the West line of said Block 4 to its Northwest corner, said corner also being a point on the Louisiana Coastline, as decreed by the Supreme Court of the United States, as determined by a Special Master appointed therein, in litigation styled *United States v. State of Louisiana et al No. 9 Original*, in 1975, having Coordinates of X = 1,377,295.42 and Y = 408,078.03; thence along said Coastline the following courses: Northeasterly on a straight line to a point having Coordinates of X = 1,380,235 and Y = 408,500; Northeasterly on a straight line to a point having Coordinates of X = 1,383,990 and Y = 409,136; and Northeasterly on a straight line to a point having Coordinates of X = 1,384,500.00 and Y = 409,151.42; thence South 15,361.18 feet to the Point of Beginning, containing **2,453.62 acres**, all as more particularly outlined on a plat on file in the Office of Mineral Resources, Department of Natural Resources. All bearings, distances and coordinates are based on Louisiana Coordinate System of 1927, (North or South Zone).

NOTE: The above description of the Tract nominated for lease has been provided and corrected, where required, exclusively by the nomination party. Any mineral lease selected from this Tract and awarded by the Louisiana State Mineral Board shall be without warranty of any kind, either express, implied, or statutory, including, but not limited to, the implied warranties of merchantability and fitness for a particular purpose. Should the mineral lease awarded by the Louisiana State Mineral Board be subsequently modified, cancelled or abrogated due to the existence of conflicting leases, operating agreements, private claims or other future obligations or conditions which may affect all or any portion of the leased Tract, it shall not relieve the Lessee of the obligation to pay any bonus due thereon to the Louisiana State Mineral Board, nor shall the Louisiana State Mineral Board be obligated to refund any consideration paid by the Lessor prior to such modification, cancellation, or abrogation, including, but not limited to, bonuses, rentals and royalties.

NOTE: The State of Louisiana does hereby reserve, and this lease shall be subject to, the imprescriptible right of surface use in the nature of a servitude in favor of the Department of Natural Resources, including its Offices and Commissions, for the sole purpose of implementing, constructing, servicing and maintaining approved coastal zone management

and/or restoration projects. Utilization of any and all rights derived under this lease by the mineral lessee, its agents, successors or assigns, shall not interfere with nor hinder the reasonable surface use by the Department of Natural Resources, its Offices or Commissions, as herein above reserved.

Applicant: LEWIS B. BERNARD

| Bidder | Cash Payment | Price/ Acre | Rental | Oil | Gas | Other |
|--------|-----------------|----------------|--------|-----|-----|-------|
| | | | | | | |
| | | | | | | |
| | | | | | | |
| | | | | | | |

Legend

09070021

Blocks

T15S - R9W



WEST CAMERON AREA, REVISED

WC0004

WC0027

P.O.B.

CAMERON PARISH

WC0005

GULF OF MEXICO

WC0026

TRACT 41023 - Portion of Block 4, West Cameron Area, Revised, Cameron Parish, Louisiana

The beds and bottoms of all water bodies belonging to the State of Louisiana located in Block 4, West Cameron Area, Revised, together with any present lands formed by accretion to the shoreline or islands formed therein, located in Cameron Parish, Louisiana, owned by and not presently under mineral lease as of July 8, 2009, from the State of Louisiana, the geographical area of which is more fully described as follows: Beginning at a point on the South line of Block 4, West Cameron Area, Revised, having Coordinates of X = 1,384,500.00 and Y = 393,790.24; thence North 15,361.18 feet to a point on the Louisiana Coastline, as decreed by the Supreme Court of the United States, as determined by a Special Master appointed therein, in litigation styled *United States v. State of Louisiana et al No. 9 Original*, in 1975, having Coordinates of X = 1,384,500.00 and Y = 409,151.42; thence along said Coastline the following courses: Northeasterly on a straight line to a point having Coordinates of X = 1,386,636 and Y = 409,216 and Northeasterly on a straight line to the Northeast corner of said Block 4, having Coordinates of X = 1,391,451.71 and Y = 409,240.45; thence South 15,450.21 feet along the East line of said Block 4 to its Southeast corner having Coordinates of X = 1,391,451.71 and Y = 393,790.24; thence West 6,951.71 feet along the South line of said Block 4 to the Point of Beginning, containing **2,461.56 acres**, all as more particularly outlined on a plat on file in the Office of Mineral Resources, Department of Natural Resources. All bearings, distances and coordinates are based on Louisiana Coordinate System of 1927, (North or South Zone).

NOTE: The above description of the Tract nominated for lease has been provided and corrected, where required, exclusively by the nomination party. Any mineral lease selected from this Tract and awarded by the Louisiana State Mineral Board shall be without warranty of any kind, either express, implied, or statutory, including, but not limited to, the implied warranties of merchantability and fitness for a particular purpose. Should the mineral lease awarded by the Louisiana State Mineral Board be subsequently modified, cancelled or abrogated due to the existence of conflicting leases, operating agreements, private claims or other future obligations or conditions which may affect all or any portion of the leased Tract, it shall not relieve the Lessee of the obligation to pay any bonus due thereon to the Louisiana State Mineral Board, nor shall the Louisiana State Mineral Board be obligated to refund any consideration paid by the Lessor prior to such modification, cancellation, or abrogation, including, but not limited to, bonuses, rentals and royalties.

NOTE: The State of Louisiana does hereby reserve, and this lease shall be subject to, the imprescriptible right of surface use in the nature of a servitude in favor of the Department of Natural Resources, including its Offices and Commissions, for the sole purpose of implementing, constructing, servicing and maintaining approved coastal zone management and/or restoration projects. Utilization of any and all rights derived

under this lease by the mineral lessee, its agents, successors or assigns, shall not interfere with nor hinder the reasonable surface use by the Department of Natural Resources, its Offices or Commissions, as herein above reserved.

Applicant: LEWIS B. BERNARD

| Bidder | Cash Payment | Price/ Acre | Rental | Oil | Gas | Other |
|--------|-----------------|----------------|--------|-----|-----|-------|
| | | | | | | |
| | | | | | | |
| | | | | | | |
| | | | | | | |

Legend

09070020

Blocks

WC0003

GULF OF MEXICO

WC0028



WC0004

CAMERON PARISH

WEST CAMERON AREA, REVISED

P.O.B.

WC0027



TRACT 41024 - Portion of Blocks 3, and 4, West Cameron Area, Revised, Cameron Parish, Louisiana

The beds and bottoms of all water bodies belonging to the State of Louisiana located in Blocks 3, and 4, West Cameron Area, Revised, together with any present lands formed by accretion to the shoreline or islands formed therein, located in Cameron Parish, Louisiana, owned by and not presently under mineral lease as of July 8, 2009, from the State of Louisiana, the geographical area of which is more fully described as follows: Beginning at a point on the South line of Block 3, West Cameron Area, Revised, having Coordinates of X = 1,398,400.00 and Y = 393,790.24; thence West 6,948.29 feet along the South of said Block 3 to its Southwest corner having Coordinates of X = 1,391,451.71 and Y = 393,790.24; thence North 15,450.21 feet along the West line of said Block 3 to its Northwest corner, said corner also being a point on the Louisiana Coastline, as decreed by the Supreme Court of the United States, as determined by a Special Master appointed therein, in litigation styled *United States v. State of Louisiana et al No. 9 Original*, in 1975, having Coordinates of X = 1,391,451.71 and Y = 409,240.45; thence along said Coastline the following courses: Northeasterly on a straight line to a point having Coordinates of X = 1,391,954 and Y = 409,243; Southeasterly on a straight line to a point having Coordinates of X = 1,392,000 and Y = 409,180; Southeasterly on a straight line to a point having Coordinates of X = 1,397,220 and Y = 408,870; and Southeasterly on straight line to a point having Coordinates of X = 1,398,400.00 and Y = 408,757.67; thence South 14,967.43 feet to the Point of Beginning, containing **2,427.08 acres**, all as more particularly outlined on a plat on file in the Office of Mineral Resources, Department of Natural Resources. All bearings, distances and coordinates are based on Louisiana Coordinate System of 1927, (North or South Zone).

NOTE: The above description of the Tract nominated for lease has been provided and corrected, where required, exclusively by the nomination party. Any mineral lease selected from this Tract and awarded by the Louisiana State Mineral Board shall be without warranty of any kind, either express, implied, or statutory, including, but not limited to, the implied warranties of merchantability and fitness for a particular purpose. Should the mineral lease awarded by the Louisiana State Mineral Board be subsequently modified, cancelled or abrogated due to the existence of conflicting leases, operating agreements, private claims or other future obligations or conditions which may affect all or any portion of the leased Tract, it shall not relieve the Lessee of the obligation to pay any bonus due thereon to the Louisiana State Mineral Board, nor shall the Louisiana State Mineral Board be obligated to refund any consideration paid by the Lessor prior to such modification, cancellation, or abrogation, including, but not limited to, bonuses, rentals and royalties.

NOTE: The State of Louisiana does hereby reserve, and this lease shall be subject to, the imprescriptible right of surface use in the nature of a servitude in favor of the Department of Natural Resources, including its

Offices and Commissions, for the sole purpose of implementing, constructing, servicing and maintaining approved coastal zone management and/or restoration projects. Utilization of any and all rights derived under this lease by the mineral lessee, its agents, successors or assigns, shall not interfere with nor hinder the reasonable surface use by the Department of Natural Resources, its Offices or Commissions, as herein above reserved.

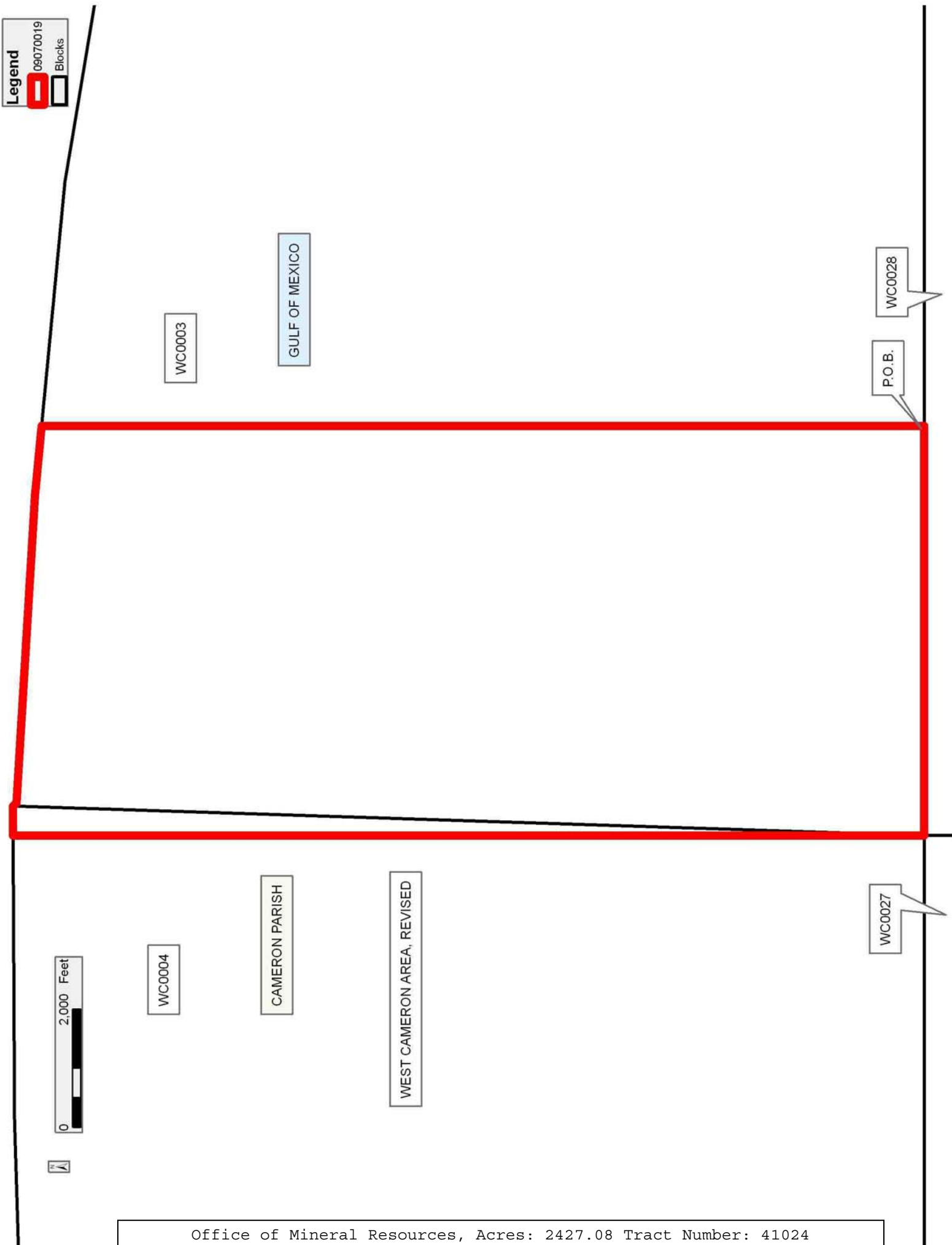
Applicant: LEWIS B. BERNARD

| Bidder | Cash Payment | Price/ Acre | Rental | Oil | Gas | Other |
|--------|-----------------|----------------|--------|-----|-----|-------|
| | | | | | | |
| | | | | | | |
| | | | | | | |
| | | | | | | |

Legend

09070019

Blocks



TRACT 41025 - Portion of Block 3, West Cameron Area, Revised, Cameron Parish, Louisiana

The beds and bottoms of all water bodies belonging to the State of Louisiana located in Block 3, West Cameron Area, Revised, together with any present lands formed by accretion to the shoreline or islands formed therein, located in Cameron Parish, Louisiana, owned by and not presently under mineral lease as of July 8, 2009, from the State of Louisiana, the geographical area of which is more fully described as follows: Beginning at a point on the South line of Block 3, West Cameron Area, Revised, having Coordinates of X = 1,398,400.00 and Y = 393,790.24; thence North 14,967.43 feet to a point on the Louisiana Coastline, as decreed by the Supreme Court of the United States, as determined by a Special Master appointed therein, in litigation styled *United States v. State of Louisiana et al No. 9 Original*, in 1975, having Coordinates of X = 1,398,400.00 and Y = 408,757.67; thence along said Coastline the following courses: Southeasterly on a straight line to a point having Coordinates of X = 1,402,525 and Y = 408,365 and Southeasterly on a straight line to the Northeast corner of said Block 3 having Coordinates of X = 1,405,806.20 and Y = 407,818.13; thence South 14,027.89 feet along the East line of said Block 3 to its Southeast corner having Coordinates of X = 1,405,806.20 and Y = 393,790.24; thence West 7,406.20 feet along the South line of said Block 3 to the Point of Beginning, containing **2,476.04 acres**, all as more particularly outlined on a plat on file in the Office of Mineral Resources, Department of Natural Resources. All bearings, distances and coordinates are based on Louisiana Coordinate System of 1927, (North or South Zone).

NOTE: The above description of the Tract nominated for lease has been provided and corrected, where required, exclusively by the nomination party. Any mineral lease selected from this Tract and awarded by the Louisiana State Mineral Board shall be without warranty of any kind, either express, implied, or statutory, including, but not limited to, the implied warranties of merchantability and fitness for a particular purpose. Should the mineral lease awarded by the Louisiana State Mineral Board be subsequently modified, cancelled or abrogated due to the existence of conflicting leases, operating agreements, private claims or other future obligations or conditions which may affect all or any portion of the leased Tract, it shall not relieve the Lessee of the obligation to pay any bonus due thereon to the Louisiana State Mineral Board, nor shall the Louisiana State Mineral Board be obligated to refund any consideration paid by the Lessor prior to such modification, cancellation, or abrogation, including, but not limited to, bonuses, rentals and royalties.

NOTE: The State of Louisiana does hereby reserve, and this lease shall be subject to, the imprescriptible right of surface use in the nature of a servitude in favor of the Department of Natural Resources, including its Offices and Commissions, for the sole purpose of implementing, constructing, servicing and maintaining approved coastal zone management and/or restoration projects. Utilization of any and all rights derived

under this lease by the mineral lessee, its agents, successors or assigns, shall not interfere with nor hinder the reasonable surface use by the Department of Natural Resources, its Offices or Commissions, as herein above reserved.

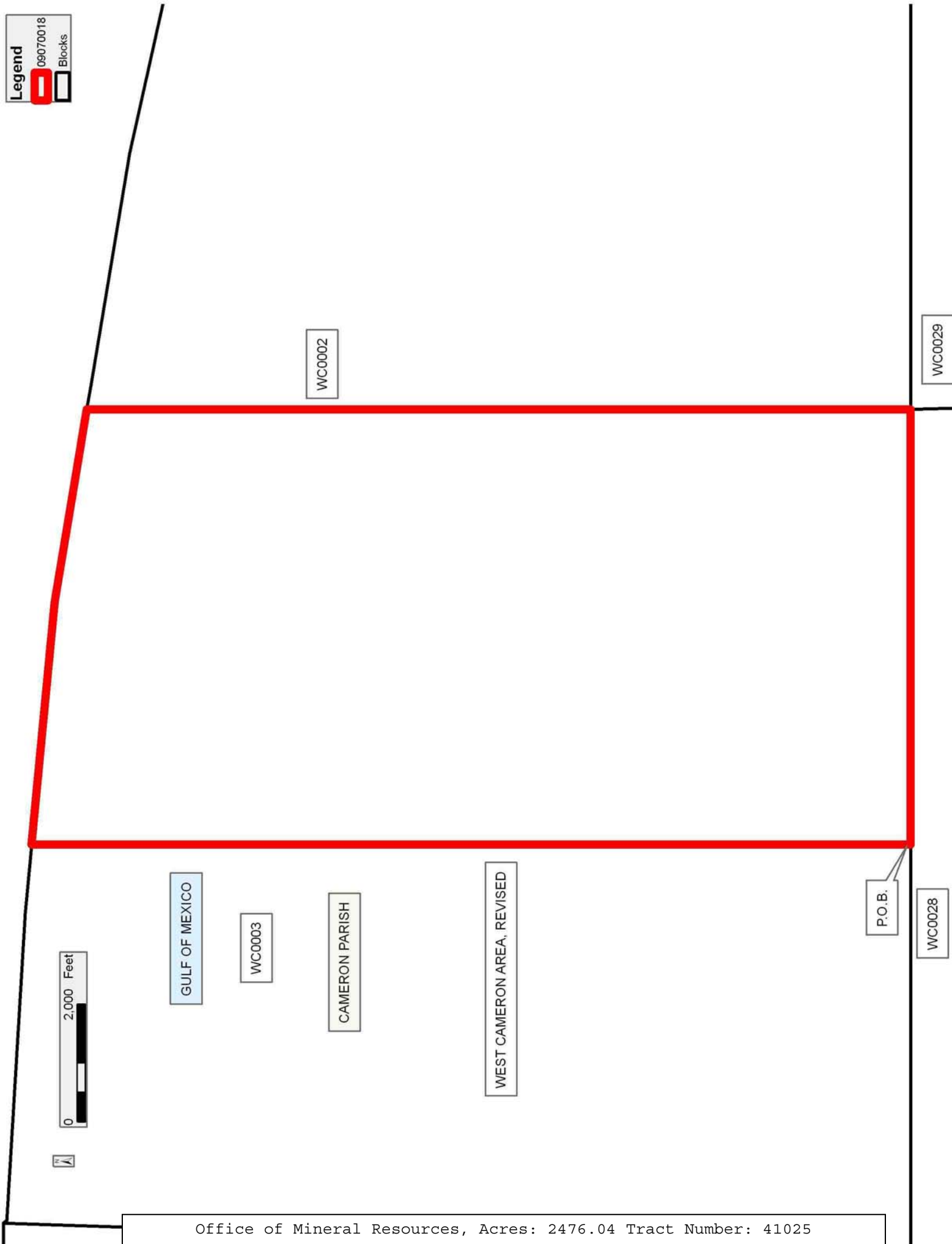
Applicant: LEWIS B. BERNARD

| Bidder | Cash Payment | Price/ Acre | Rental | Oil | Gas | Other |
|--------|-----------------|----------------|--------|-----|-----|-------|
| | | | | | | |
| | | | | | | |
| | | | | | | |
| | | | | | | |

Legend

09070018

Blocks



TRACT 41026 - Portion of Block 2, West Cameron Area, Revised, Cameron Parish, Louisiana

The beds and bottoms of all water bodies belonging to the State of Louisiana located in Block 2, West Cameron Area, Revised, together with any present lands formed by accretion to the shoreline or islands formed therein, located in Cameron Parish, Louisiana, owned by and not presently under mineral lease as of July 8, 2009, from the State of Louisiana, the geographical area of which is more fully described as follows: Beginning at a point on the East line of Block 2, West Cameron Area, Revised, having Coordinates of X = 1,421,416.19 and Y = 399,450.00; thence South 5,659.76 feet along the East line of said Block 2 to its Southeast corner having Coordinates of X = 1,421,416.19 and Y = 393,790.24; thence West 15,609.99 feet along the South line of said Block 2 to its Southwest corner having Coordinates of X = 1,405,806.20 and Y = 393,790.24; thence North 14,027.89 feet along the West line of said Block 2 to its Northwest corner, said corner being a point on the Louisiana Coastline, as decreed by the Supreme Court of the United States, as determined by a Special Master appointed therein, in litigation styled *United States v. State of Louisiana et al No. 9 Original*, in 1975, having Coordinates of X = 1,405,806.20 and Y = 407,818.13; thence along the Coastline the following courses: Southeasterly on a straight line to a point having Coordinates of X = 1,410,175 and Y = 407,090 and Southeasterly on a straight line to the most Northerly Northeast corner of State Lease No. 18423, having Coordinates of X = 1,411,288.31 and Y = 406,840.00; thence along the boundary of said State Lease No. 18423 the following courses: West 2,720.31 feet to a point having Coordinates of X = 1,408,568.00 and Y = 406,840.00; South 1,130.00 feet to a point having Coordinates of X = 1,408,568.00 and Y = 405,710.00; West 2,288.00 feet to a point having Coordinates of X = 1,406,280.00 and Y = 405,710.00; and South 3,010.00 feet to its Southwest corner, said corner also being the most Westerly Northwest corner of State Lease No. 18521, having Coordinates of X = 1,406,280.00 and Y = 402,700.00; thence South 1,617.26 feet along the West line of said State Lease No. 18521 to its Southwest corner, said corner also being the Northwest corner of State Lease No. 19031, having Coordinates of X = 1,406,280.00 and Y = 401,082.74; thence along the boundary of said State Lease No. 19031 the following courses: South 08 degrees 21 minutes 08 seconds East 1,906.97 feet to a point having Coordinates of X = 1,406,557.00 and Y = 399,196.00 and South 63 degrees 26 minutes 06 seconds East 2,283.03 feet to its Southeast corner, said corner also being the Southwest corner of State Lease No. 18524, having Coordinates of X = 1,408,599.00 and Y = 398,175.00; thence East 1,201.00 feet along the South line of State Lease No. 18524 to its Southeast corner, said corner also being the Southwest corner of State Lease No. 19192, having Coordinates of X = 1,409,800.00 and Y = 398,175.00; thence along the boundary of said State Lease No. 19192 the following courses: South 63 degrees 26 minutes 06 seconds East 2,403.77 feet to a point having Coordinates of X = 1,411,950.00 and Y = 397,100.00 and North 39 degrees 02 minutes 39 seconds East 2,341.10 feet to its Northeast corner, said corner also being the most Southerly Southeast corner of State Lease No. 19190, having Coordinates of X =

1,413,424.71 and Y = 398,918.24; thence North 39 degrees 02 minutes 39 seconds East 684.67 feet along the East boundary of said State Lease No. 19190 to a point having Coordinates of X = 1,413,856.00 and Y = 399,450.00; thence East 7,560.19 feet to the Point of Beginning, containing **2,025.25 acres**, all as more particularly outlined on a plat on file in the Office of Mineral Resources, Department of Natural Resources. All bearings, distances and coordinates are based on Louisiana Coordinate System of 1927, (North or South Zone).

NOTE: The above description of the Tract nominated for lease has been provided and corrected, where required, exclusively by the nomination party. Any mineral lease selected from this Tract and awarded by the Louisiana State Mineral Board shall be without warranty of any kind, either express, implied, or statutory, including, but not limited to, the implied warranties of merchantability and fitness for a particular purpose. Should the mineral lease awarded by the Louisiana State Mineral Board be subsequently modified, cancelled or abrogated due to the existence of conflicting leases, operating agreements, private claims or other future obligations or conditions which may affect all or any portion of the leased Tract, it shall not relieve the Lessee of the obligation to pay any bonus due thereon to the Louisiana State Mineral Board, nor shall the Louisiana State Mineral Board be obligated to refund any consideration paid by the Lessor prior to such modification, cancellation, or abrogation, including, but not limited to, bonuses, rentals and royalties.

NOTE: The State of Louisiana does hereby reserve, and this lease shall be subject to, the imprescriptible right of surface use in the nature of a servitude in favor of the Department of Natural Resources, including its Offices and Commissions, for the sole purpose of implementing, constructing, servicing and maintaining approved coastal zone management and/or restoration projects. Utilization of any and all rights derived under this lease by the mineral lessee, its agents, successors or assigns, shall not interfere with nor hinder the reasonable surface use by the Department of Natural Resources, its Offices or Commissions, as herein above reserved.

Applicant: WILLIAM B. FAVA

| Bidder | Cash Payment | Price/ Acre | Rental | Oil | Gas | Other |
|--------|-----------------|----------------|--------|-----|-----|-------|
| | | | | | | |
| | | | | | | |
| | | | | | | |
| | | | | | | |

Legend

- 09070017
- Blocks
- Active_Leases



T15S - R8W

CAMERON PARISH

GULF OF MEXICO

WEST CAMERON AREA, REVISED

P.O.B.

WC0001

WC0030

WC0002

WC0029

SL 18423

SL 18521

SL 19031

SL 19190

SL 19192

SL 18524

WC0003

WC0028

TRACT 41027 - Portion of Block 2, West Cameron Area, Revised, Cameron Parish, Louisiana

The beds and bottoms of all water bodies belonging to the State of Louisiana located in Block 2, West Cameron Area, Revised, together with any present lands formed by accretion to the shoreline or islands formed therein, located in Cameron Parish, Louisiana, owned by and not presently under mineral lease as of July 8, 2009, from the State of Louisiana, the geographical area of which is more fully described as follows: Beginning at a point on the East line of Block 2, West Cameron Area, Revised, having Coordinates of X = 1,421,416.19 and Y = 399,450.00; thence West 7,560.19 feet to a point on the East line of State Lease No. 19190 having Coordinates of X = 1,413,856.00 and Y = 399,450.00; thence North 3,156.00 feet along the East line of said State Lease No. 19190 to its Northeast corner, said corner also being the most Easterly Southeast corner of State Lease No. 18521, having Coordinates of X = 1,413,856.00 and Y = 402,606.00; thence along the boundary of said State Lease No. 18521 the following courses: North 1,576.00 feet to a point having Coordinates of X = 1,413,856.00 and Y = 404,182.00 and North 41 degrees 25 minutes 49 seconds West 3,462.25 feet to a point on the Louisiana Coastline, as decreed by the Supreme Court of the United States, as determined by a Special Master appointed therein, in litigation styled *United States v. State of Louisiana et al No. 9 Original*, in 1975, having Coordinates of X = 1,411,565.00 and Y = 406,777.87; thence along said Coastline the following courses: Southeasterly on a straight line to a point having Coordinates of X = 1,416,365 and Y = 405,700 and Southeasterly on a straight line to the Northeast corner of said Block 2 having Coordinates of X = 1,421,416.19 and Y = 404,156.83; thence South 4,706.83 feet along the East line of said Block 2 to the Point of Beginning, containing **1,066.23 acres**, all as more particularly outlined on a plat on file in the Office of Mineral Resources, Department of Natural Resources. All bearings, distances and coordinates are based on Louisiana Coordinate System of 1927, (North or South Zone).

NOTE: The above description of the Tract nominated for lease has been provided and corrected, where required, exclusively by the nomination party. Any mineral lease selected from this Tract and awarded by the Louisiana State Mineral Board shall be without warranty of any kind, either express, implied, or statutory, including, but not limited to, the implied warranties of merchantability and fitness for a particular purpose. Should the mineral lease awarded by the Louisiana State Mineral Board be subsequently modified, cancelled or abrogated due to the existence of conflicting leases, operating agreements, private claims or other future obligations or conditions which may affect all or any portion of the leased Tract, it shall not relieve the Lessee of the obligation to pay any bonus due thereon to the Louisiana State Mineral Board, nor shall the Louisiana State Mineral Board be obligated to refund any consideration paid by the Lessor prior to such modification, cancellation, or abrogation, including, but not limited to, bonuses, rentals and royalties.

NOTE: The State of Louisiana does hereby reserve, and this lease shall be subject to, the imprescriptible right of surface use in the nature of a servitude in favor of the Department of Natural Resources, including its Offices and Commissions, for the sole purpose of implementing, constructing, servicing and maintaining approved coastal zone management and/or restoration projects. Utilization of any and all rights derived under this lease by the mineral lessee, its agents, successors or assigns, shall not interfere with nor hinder the reasonable surface use by the Department of Natural Resources, its Offices or Commissions, as herein above reserved.

Applicant: WILLIAM B. FAVA

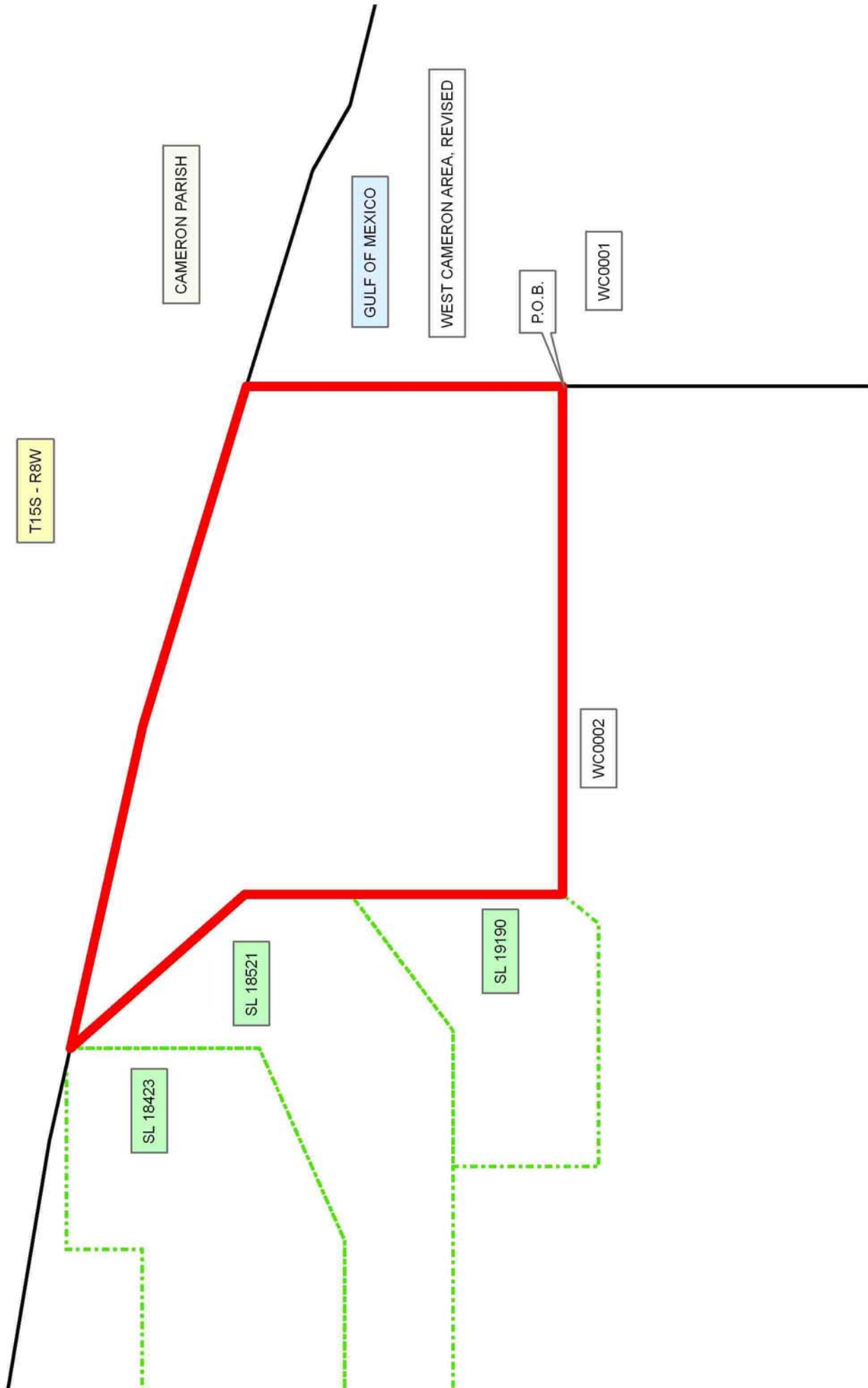
| Bidder | Cash Payment | Price/ Acre | Rental | Oil | Gas | Other |
|--------|-----------------|----------------|--------|-----|-----|-------|
| | | | | | | |
| | | | | | | |
| | | | | | | |
| | | | | | | |

Legend

09070016

Blocks

Active_Leases



TRACT 41028 - Portion of Block 1, West Cameron Area, Revised, Cameron Parish, Louisiana

The beds and bottoms of all water bodies belonging to the State of Louisiana located in Block 1, West Cameron Area, Revised, together with any present lands formed by accretion to the shoreline or islands formed therein, located in Cameron Parish, Louisiana, owned by and not presently under mineral lease as of July 8, 2009, from the State of Louisiana, the geographical area of which is more fully described as follows: Beginning at a point on the South line of Block 1, West Cameron Area, Revised, having Coordinates of X = 1,429,020.00 and Y = 393,790.24; thence West 7,603.81 feet along the South line of said Block 1 to its Southwest corner having Coordinates of X = 1,421,416.19 and Y = 393,790.24; thence North 10,366.59 feet along the West line of said Block 1 to its Northwest corner, said corner also being a point on the Louisiana Coastline, as decreed by the Supreme Court of the United States, as determined by a Special Master appointed therein, in litigation styled *United States v. State of Louisiana et al No. 9 Original*, in 1975, having Coordinates of X = 1,421,416.19 and Y = 404,156.83; thence along said Coastline the following courses: Southeasterly on a straight line to a point having Coordinates of X = 1,424,630 and Y = 403,175; Southeasterly on a straight line to a point having Coordinates of X = 1,425,600 and Y = 402,610; Southeasterly on a straight line to a point having Coordinates of X = 1,429,035 and Y = 401,760; and Southwesterly on a straight line to a point having Coordinates of X = 1,429,020 and Y = 401,485; thence South 7,694.76 feet to the Point of Beginning, containing **1,590.59 acres**, all as more particularly outlined on a plat on file in the Office of Mineral Resources, Department of Natural Resources. All bearings, distances and coordinates are based on Louisiana Coordinate System of 1927, (North or South Zone).

NOTE: The above description of the Tract nominated for lease has been provided and corrected, where required, exclusively by the nomination party. Any mineral lease selected from this Tract and awarded by the Louisiana State Mineral Board shall be without warranty of any kind, either express, implied, or statutory, including, but not limited to, the implied warranties of merchantability and fitness for a particular purpose. Should the mineral lease awarded by the Louisiana State Mineral Board be subsequently modified, cancelled or abrogated due to the existence of conflicting leases, operating agreements, private claims or other future obligations or conditions which may affect all or any portion of the leased Tract, it shall not relieve the Lessee of the obligation to pay any bonus due thereon to the Louisiana State Mineral Board, nor shall the Louisiana State Mineral Board be obligated to refund any consideration paid by the Lessor prior to such modification, cancellation, or abrogation, including, but not limited to, bonuses, rentals and royalties.

NOTE: The State of Louisiana does hereby reserve, and this lease shall be subject to, the imprescriptible right of surface use in the nature of a servitude in favor of the Department of Natural Resources, including its

Offices and Commissions, for the sole purpose of implementing, constructing, servicing and maintaining approved coastal zone management and/or restoration projects. Utilization of any and all rights derived under this lease by the mineral lessee, its agents, successors or assigns, shall not interfere with nor hinder the reasonable surface use by the Department of Natural Resources, its Offices or Commissions, as herein above reserved.

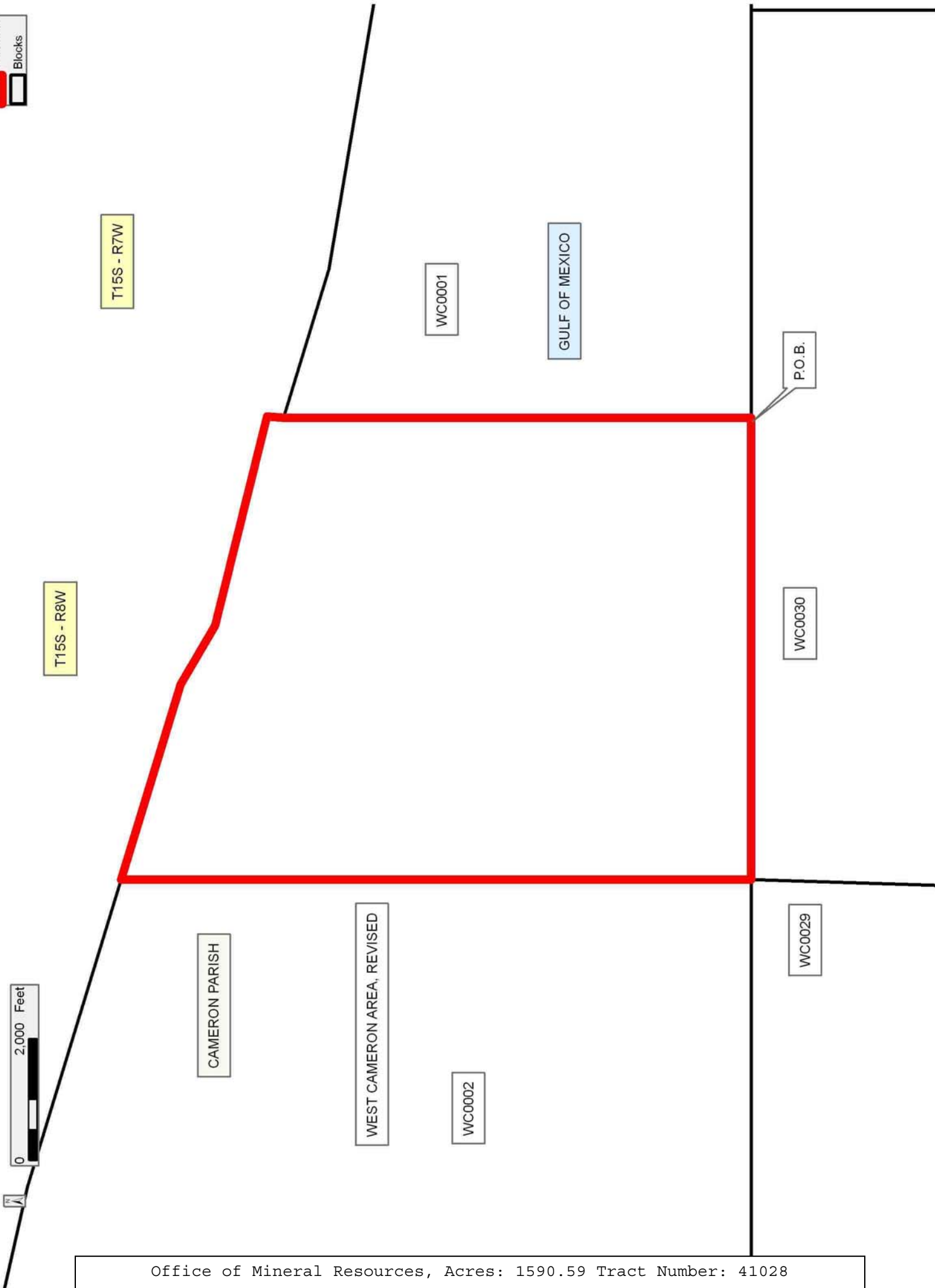
Applicant: WILLIAM B. FAVA

| Bidder | Cash Payment | Price/ Acre | Rental | Oil | Gas | Other |
|--------|-----------------|----------------|--------|-----|-----|-------|
| | | | | | | |
| | | | | | | |
| | | | | | | |
| | | | | | | |

Legend

09070015

Blocks



TRACT 41029 - Portion of Block 1, West Cameron Area, Revised, Cameron Parish, Louisiana

The beds and bottoms of all water bodies belonging to the State of Louisiana located in Block 1, West Cameron Area, Revised, together with any present lands formed by accretion to the shoreline or islands formed therein, located in Cameron Parish, Louisiana, owned by and not presently under mineral lease as of July 8, 2009, from the State of Louisiana, the geographical area of which is more fully described as follows: Beginning at a point on the South line of Block 1, West Cameron Area, Revised, having Coordinates of X = 1,429,020.00 and Y = 393,790.24; thence North 7,694.76 feet to a point on the Louisiana Coastline, as decreed by the Supreme Court of the United States, as determined by a Special Master appointed therein, in litigation styled *United States v. State of Louisiana et al No. 9 Original*, in 1975, having Coordinates of X = 1,429,020 and Y = 401,485; thence along said Coastline the following courses: Southeasterly on a straight line to a point having Coordinates of X = 1,431,465 and Y = 400,740; Southeasterly on a straight line to a point having Coordinates of X = 1,431,526 and Y = 400,742; Southeasterly on a straight line to a point having Coordinates of X = 1,436,899 and Y = 399,820; and Southeasterly on a straight line to the Northwest corner of State Lease No. 19098 having Coordinates of X = 1,437,438.02 and Y = 399,623.72; thence along the boundary of said State Lease No. 19098 the following courses: South 17 degrees 31 minutes 32 seconds West 93.03 feet to a point having Coordinates of X = 1,437,410.00 and Y = 399,535.00; South 390.00 feet to a point having Coordinates of X = 1,437,410.00 and Y = 399,145.00; and South 88 degrees 37 minutes 31 seconds East 368.73 feet to its Southeast corner, said corner also being a point on the Western boundary of State Lease No. 12725, as amended, having Coordinates of X = 1,437,778.63 and Y = 399,136.15; thence along the boundary of said State Lease No. 12725, as amended, the following courses: South 01 degrees 54 minutes 33 seconds East 41.18 feet to a point having Coordinates of X = 1,437,780.00 and Y = 399,095.00 and South 14 degrees 02 minutes 11 seconds East 175.23 feet to the most Northerly Northeast corner of State Lease No. 18949 having Coordinates of X = 1,437,822.50 and Y = 398,925.00; thence along the boundary of said State Lease No. 18949 the following courses: West 2,096.64 feet to a point having Coordinates of X = 1,435,725.86 and Y = 398,925.00 and South 5,134.76 feet to a point on the South line of said Block 1 having Coordinates of X = 1,435,725.86 and Y = 393,790.24; thence West 6,705.86 along the South line of said Block 1 to the Point of Beginning, containing **1,094.41 acres**, all as more particularly outlined on a plat on file in the Office of Mineral Resources, Department of Natural Resources. All bearings, distances and coordinates are based on Louisiana Coordinate System of 1927, (North or South Zone).

NOTE: The above description of the Tract nominated for lease has been provided and corrected, where required, exclusively by the nomination party. Any mineral lease selected from this Tract and awarded by the Louisiana State Mineral Board shall be without warranty of any kind, either express, implied, or statutory, including, but not limited to, the

implied warranties of merchantability and fitness for a particular purpose. Should the mineral lease awarded by the Louisiana State Mineral Board be subsequently modified, cancelled or abrogated due to the existence of conflicting leases, operating agreements, private claims or other future obligations or conditions which may affect all or any portion of the leased Tract, it shall not relieve the Lessee of the obligation to pay any bonus due thereon to the Louisiana State Mineral Board, nor shall the Louisiana State Mineral Board be obligated to refund any consideration paid by the Lessor prior to such modification, cancellation, or abrogation, including, but not limited to, bonuses, rentals and royalties.

NOTE: The State of Louisiana does hereby reserve, and this lease shall be subject to, the imprescriptible right of surface use in the nature of a servitude in favor of the Department of Natural Resources, including its Offices and Commissions, for the sole purpose of implementing, constructing, servicing and maintaining approved coastal zone management and/or restoration projects. Utilization of any and all rights derived under this lease by the mineral lessee, its agents, successors or assigns, shall not interfere with nor hinder the reasonable surface use by the Department of Natural Resources, its Offices or Commissions, as herein above reserved.

Applicant: WILLIAM B. FAVA

| Bidder | Cash Payment | Price/ Acre | Rental | Oil | Gas | Other |
|--------|-----------------|----------------|--------|-----|-----|-------|
| | | | | | | |
| | | | | | | |
| | | | | | | |
| | | | | | | |

Legend

- 09070014
- Blocks
- Active_Leases



T15S - R8W

T15S - R7W

CAMERON PARISH

SL 19098

SL 19109

SL 12725

SL 18949

WC0001

GULF OF MEXICO

WEST CAMERON AREA, REVISED

P.O.B.

WC0030

WC0031

TRACT 41030 - Portion of Blocks 26, and 27, West Cameron Area, Revised, Cameron Parish, Louisiana

The beds and bottoms of all water bodies belonging to the State of Louisiana located in Blocks 26, and 27, West Cameron Area, Revised, together with any present lands formed by accretion to the shoreline or islands formed therein, located in Cameron Parish, Louisiana, owned by and not presently under mineral lease as of July 8, 2009, from the State of Louisiana, the geographical area of which is more fully described as follows: Beginning at the Northeast corner of Block 27, West Cameron Area, Revised, having Coordinates of X = 1,391,451.71 and Y = 393,790.24; thence South 2,850.79 feet along the East line of said Block 27 to a point on the Three Mile Line, as decreed by the Supreme Court of the United States, as determined by a Special Master appointed therein, in litigation styled *United States v. State of Louisiana et al No. 9 Original*, in 1975, having Coordinates of X = 1,391,451.71 and Y = 390,939.45; thence along said Three Mile Decree line the following courses: Northwesterly on a straight line to a point having Coordinates of X = 1,390,919 and Y = 390,971; along an arc with a radius of 18,240.60 feet and a center of X = 1,392,000 and Y = 409,180 to a point having Coordinates of X = 1,390,575 and Y = 390,995; Southwesterly on a straight line to a point having Coordinates of X = 1,386,958 and Y = 390,977; Southwesterly on a straight line to a point having Coordinates of X = 1,385,797 and Y = 390,942; Southwesterly on a straight line to a point having Coordinates of X = 1,383,281 and Y = 390,516; along an arc with a radius of 18,240.60 feet and a center of X = 1,380,235 and Y = 408,500 to a point having Coordinates of X = 1,382,827 and Y = 390,444; Southwesterly on a straight line to a point having Coordinates of X = 1,380,530 and Y = 390,115; Southwesterly on a straight line to a point having Coordinates of X = 1,379,793 and Y = 389,887; and along an arc with a radius of 18,240.60 feet and a center of X = 1,363,392 and Y = 397,870 to a point on the West line of said Block 27 having Coordinates of X = 1,376,693.66 and Y = 385,388.35; thence North 8,401.89 feet along the West line of said Block 27 to its Northwest corner having Coordinates of X = 1,376,693.66 and Y = 393,790.24; thence East 14,758.05 feet along the North line of said Block 27 to the Point of Beginning, containing **1,280.68 acres, LESS AND EXCEPT** that portion thereof, if any, lying seaward of the line three nautical miles from the coast line of Louisiana, as said three mile line has been decreed by the Supreme Court of the United States, as determined by a Special Master appointed therein, in litigation styled **United States v. State of Louisiana et al No. 9 Original**, in 1975, all as more particularly outlined on a plat in the Office of Mineral Resources, Department of Natural Resources. All bearings, distances and coordinates are based on the Louisiana Coordinate System of 1927, (South Zone).

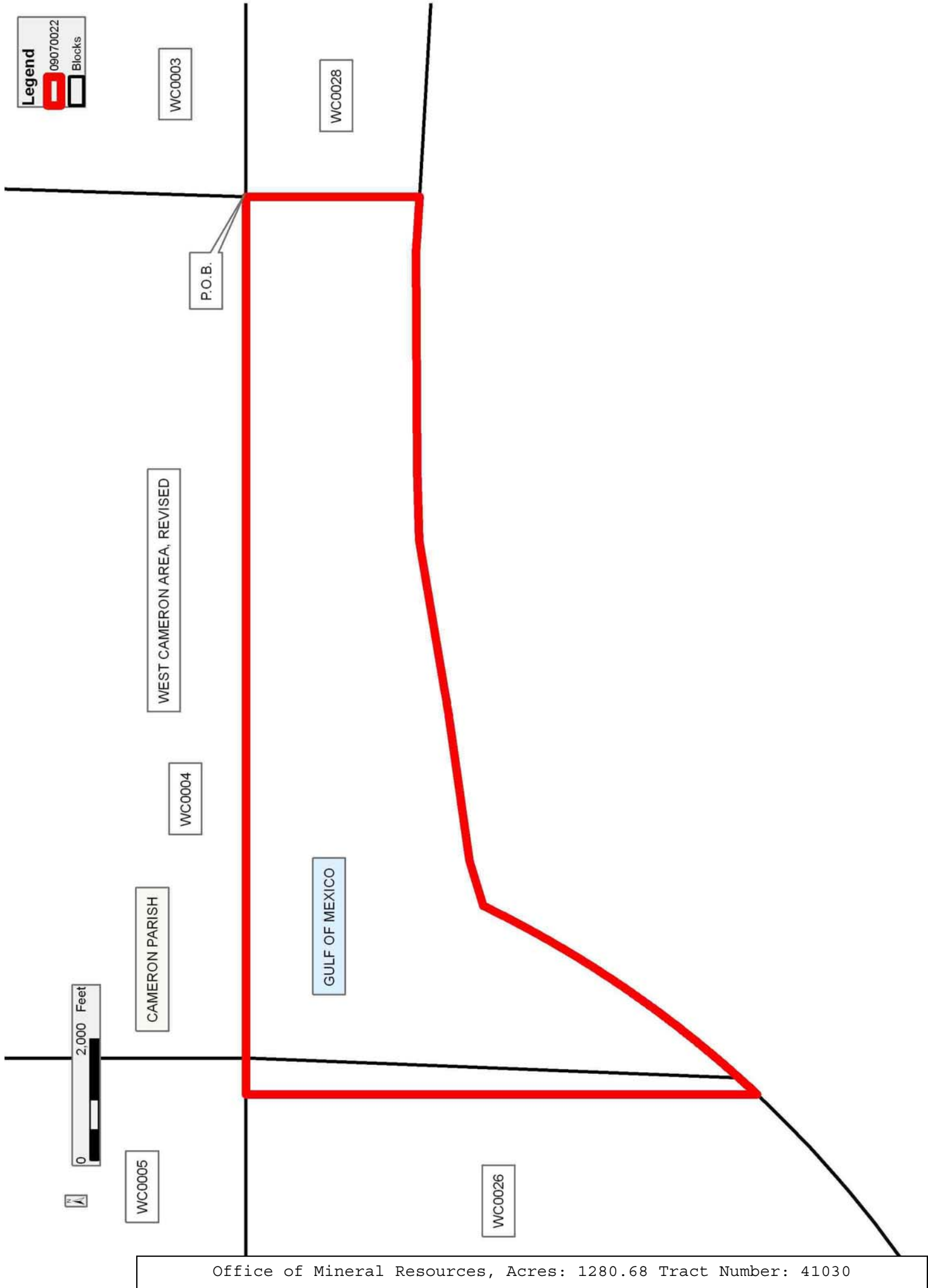
NOTE: The above description of the Tract nominated for lease has been provided and corrected, where required, exclusively by the nomination party. Any mineral lease selected from this Tract and awarded by the Louisiana State Mineral Board shall be without warranty of any kind, either express, implied, or statutory, including, but not limited to, the

implied warranties of merchantability and fitness for a particular purpose. Should the mineral lease awarded by the Louisiana State Mineral Board be subsequently modified, cancelled or abrogated due to the existence of conflicting leases, operating agreements, private claims or other future obligations or conditions which may affect all or any portion of the leased Tract, it shall not relieve the Lessee of the obligation to pay any bonus due thereon to the Louisiana State Mineral Board, nor shall the Louisiana State Mineral Board be obligated to refund any consideration paid by the Lessor prior to such modification, cancellation, or abrogation, including, but not limited to, bonuses, rentals and royalties.

NOTE: The State of Louisiana does hereby reserve, and this lease shall be subject to, the imprescriptible right of surface use in the nature of a servitude in favor of the Department of Natural Resources, including its Offices and Commissions, for the sole purpose of implementing, constructing, servicing and maintaining approved coastal zone management and/or restoration projects. Utilization of any and all rights derived under this lease by the mineral lessee, its agents, successors or assigns, shall not interfere with nor hinder the reasonable surface use by the Department of Natural Resources, its Offices or Commissions, as herein above reserved.

Applicant: LEWIS B. BERNARD

| Bidder | Cash Payment | Price/ Acre | Rental | Oil | Gas | Other |
|--------|-----------------|----------------|--------|-----|-----|-------|
| | | | | | | |
| | | | | | | |
| | | | | | | |
| | | | | | | |



TRACT 41031 - Portion of Blocks 28, and 29, West Cameron Area, Revised, Cameron Parish, Louisiana

The beds and bottoms of all water bodies belonging to the State of Louisiana located in Blocks 28, and 29, West Cameron Area, Revised, together with any present lands formed by accretion to the shoreline or islands formed therein, located in Cameron Parish, Louisiana, owned by and not presently under mineral lease as of July 8, 2009, from the State of Louisiana, the geographical area of which is more fully described as follows: Beginning at the Northwest corner of Block 28, West Cameron Area, Revised, having Coordinates of X = 1,391,451.71 and Y = 393,790.24; thence East 14,758.05 feet along the North line of said Block 28 to its Northeast corner having Coordinates of X = 1,406,209.76 and Y = 393,790.24; thence South 4,531.71 feet along the East line of said Block 28 to a point on the Three Mile Line, as decreed by the Supreme Court of the United States, as determined by a Special Master appointed therein, in litigation styled *United States v. State of Louisiana et al No. 9 Original*, in 1975, having Coordinates of X = 1,406,209.76 and Y = 389,258.53; thence along said Three Mile Decree line the following courses: Northwesterly on a straight line to a point having Coordinates of X = 1,400,158 and Y = 390,267; Northwesterly on a straight line to a point having Coordinates of X = 1,395,815 and Y = 390,681; and Northwesterly on a straight line to a point on the West line of said Block 28 having Coordinates of X = 1,391,451.71 and Y = 390,939.45; thence North 2,850.79 feet along the West line of said Block 28 to the Point of Beginning, containing **1,188.67 acres, LESS AND EXCEPT** that portion thereof, if any, lying seaward of the line three nautical miles from the coast line of Louisiana, as said three mile line has been decreed by the Supreme Court of the United States, as determined by a Special Master appointed therein, in litigation styled **United States v. State of Louisiana et al No. 9 Original**, in 1975, all as more particularly outlined on a plat in the Office of Mineral Resources, Department of Natural Resources. All bearings, distances and coordinates are based on the Louisiana Coordinate System of 1927, (South Zone).

NOTE: The above description of the Tract nominated for lease has been provided and corrected, where required, exclusively by the nomination party. Any mineral lease selected from this Tract and awarded by the Louisiana State Mineral Board shall be without warranty of any kind, either express, implied, or statutory, including, but not limited to, the implied warranties of merchantability and fitness for a particular purpose. Should the mineral lease awarded by the Louisiana State Mineral Board be subsequently modified, cancelled or abrogated due to the existence of conflicting leases, operating agreements, private claims or other future obligations or conditions which may affect all or any portion of the leased Tract, it shall not relieve the Lessee of the obligation to pay any bonus due thereon to the Louisiana State Mineral Board, nor shall the Louisiana State Mineral Board be obligated to refund any consideration paid by the Lessor prior to such modification, cancellation, or abrogation, including, but not limited to, bonuses, rentals and royalties.

NOTE: The State of Louisiana does hereby reserve, and this lease shall be subject to, the imprescriptible right of surface use in the nature of a servitude in favor of the Department of Natural Resources, including its Offices and Commissions, for the sole purpose of implementing, constructing, servicing and maintaining approved coastal zone management and/or restoration projects. Utilization of any and all rights derived under this lease by the mineral lessee, its agents, successors or assigns, shall not interfere with nor hinder the reasonable surface use by the Department of Natural Resources, its Offices or Commissions, as herein above reserved.

Applicant: LEWIS B. BERNARD

| Bidder | Cash Payment | Price/ Acre | Rental | Oil | Gas | Other |
|--------|-----------------|----------------|--------|-----|-----|-------|
| | | | | | | |
| | | | | | | |
| | | | | | | |
| | | | | | | |

