

TRACT 39971 - Plaquemines Parish, Louisiana

All State owned lands and water bottoms located within the boundaries of the Pass-A-Loutre Wildlife Management Area as defined by the Department of Wildlife and Fisheries incorporating a title opinion from the Office of the Governor dated August 3, 1998, not presently under mineral lease by the State of Louisiana on July 9, 2008, all as set forth following: Beginning at a point having Coordinates of X = 2,692,682.48 and Y = 184,004.06; thence East 8,129.78 feet to a point having Coordinates of X = 2,700,812.26 and Y = 184,004.06; thence South 6,458.22 feet to a point having Coordinates of X = 2,700,812.26 and Y = 177,545.84; thence South 68 degrees 18 minutes 00 seconds West approximately 8,707 feet to a point on the Northern boundary of State Lease No. 214, as amended; thence approximately 50 feet along the Northern boundary of said State Lease 214 to a point of intersection with a North-South line having a Coordinate of X = 2,692,682.48; thence North approximately 9,686 feet to the Point of Beginning, containing approximately 1,507 gross acres, **LESS AND EXCEPT** any privately owned land that may be located within the above described Tract, if any, comprising approximately 1,004 acres, leaving a total of **503 net acres** of State owned land and water bottoms within the above described Tract, all as more particularly outlined on a plat on file in the Office of Mineral Resources, Department of Natural Resources. All bearings, distances and coordinates are based on Louisiana Coordinate System of 1927, (South Zone).

NOTE: The above description of the Tract nominated for lease has been provided and corrected, where required, exclusively by the nomination party. Any mineral lease selected from this Tract and awarded by the Louisiana State Mineral Board shall be without warranty of any kind, either express, implied, or statutory, including, but not limited to, the implied warranties of merchantability and fitness for a particular purpose. Should the mineral lease awarded by the Louisiana State Mineral Board be subsequently modified, cancelled or abrogated due to the existence of conflicting leases, operating agreements, private claims or other future obligations or conditions which may affect all or any portion of the leased Tract, it shall not relieve the Lessee of the obligation to pay any bonus due thereon to the Louisiana State Mineral Board, nor shall the Louisiana State Mineral Board be obligated to refund any consideration paid by the Lessor prior to such modification, cancellation, or abrogation, including, but not limited to, bonuses, rentals and royalties.

NOTE: The Office of Mineral Resources will require a minimum bonus of \$350 per acre and a minimum royalty of 25%.

NOTE: The mineral lease is located within the Pass A Loutre WMA under the jurisdiction of the Louisiana Department of Wildlife and Fisheries which has promulgated rules and regulations for the protection of game and wildlife on the aforesaid Tract and, therefore, shall be subject to said rules and regulations, a copy of which shall be attached to the mineral

lease. In addition to the specific rules and regulations applicable, the following shall apply regarding operations under this mineral lease:

1. No activities will be allowed without written authorization from the Louisiana Department of Wildlife and Fisheries.
2. Projects will be evaluated on a case by case basis. Modifications to projects may be required including, but not limited to, access routes, spoil placement, well sites, flow lines and other appurtenant structures.
3. Mitigation will be required to offset avoidable wetland impacts.
4. Removal of all structures, facilities and equipment will be required within 120 days of abandonment unless otherwise agreed to by the Louisiana Department of Wildlife and Fisheries.
5. No activities will be allowed during the hunting season unless approved by the Department.
6. Compliance with the said WMA regulations will be required unless otherwise specified by the Department.
7. Prior to submitting applications for wetland permits to Federal and State permitting agencies the lease holder shall coordinate project details with the Louisiana Department of Wildlife and Fisheries, Fur and Refuge Division. Contact person for the Department will be Mike Windham at (504) 568-5886.

NOTE: The State of Louisiana does hereby reserve, and this lease shall be subject to, the imprescriptible right of surface use in the nature of a servitude in favor of the Department of Natural Resources, including its Offices and Commissions, for the sole purpose of implementing, constructing, servicing and maintaining approved coastal zone management and/or restoration projects. Utilization of any and all rights derived under this lease by the mineral lessee, its agents, successors or assigns, shall not interfere with nor hinder the reasonable surface use by the Department of Natural Resources, its Offices or Commissions, as herein above reserved.

NOTE: The Department of Wildlife and Fisheries has designated certain areas in the coastal waters of the State of Louisiana as Oyster Seed Bed Areas. The exact location of those Seed Bed Areas must be obtained from the Department of Wildlife and Fisheries and any work done under a mineral lease from the State of Louisiana may necessarily be conducted in conformity with the rules and regulations promulgated by the said Department of Wildlife and Fisheries for Oyster Seed Bed Areas.

Applicant: JEREL EXPLORATION, INC.

Bidder	Cash Payment	Price/Acre	Rental	Oil	Gas	Other

Legend

-  08070066
-  Wildlife
-  Active_Leases

DOQQ2004

PLAQUEMINES PARISH

PASS A LOUTRE WMA

P.O.B.

MISSISSIPPI RIVER

SL 1393

SL 214



TRACT 39972 - Plaquemines Parish, Louisiana

All State owned lands and water bottoms located within the boundaries of the Pass-A-Loutre Wildlife Management Area as defined by the Department of Wildlife and Fisheries incorporating a title opinion from the Office of the Governor dated August 3, 1998, not presently under mineral lease by the State of Louisiana on July 9, 2008, all as set forth following: Beginning at a point on the Northern boundary of Pass-A-Loutre Wildlife Management Area having Coordinates of X = 2,682,868.73 and Y = 183,113.20; thence East 2,813.43 feet to a point having Coordinates of X = 2,685,682.16 and Y = 183,113.20; thence South 7,975.37 feet to a point having Coordinates of X = 2,685,682.16 and Y = 175,137.84; thence West 2,898.92 feet to a point having Coordinates of X = 2,682,783.24 and Y = 175,137.84; thence South approximately 808 feet to the Northernmost Northwest corner of State Lease No. 214; thence along the Western boundary of State Lease No. 214 the following courses: Southerly, Westerly, and Southerly to a point being on the Western corner of State Lease No. 214 that intersects with a line that bears East from a Coordinate of X = 2,677,365.40 and Y = 172,748.10; thence West approximately 2,781 feet to a point having Coordinates of X = 2,677,365.40 and Y = 172,748.10; thence North 5,847.97 feet to a point on the said Northern boundary of Pass-A-Loutre Refuge having Coordinates of X = 2,677,365.40 and Y = 178,596.07; thence Northeasterly with the said Pass-A-Loutre Wildlife Management Area boundary along an arc to the left with a radius of 10,510.00 feet and a long cord bearing North 50 degrees 37 minutes 15 seconds East 7,119.76 feet to the Point of Beginning, **LESS AND EXCEPT** all of Operating Agreement (FSL State Lease No. 3942, State Lease No. 8063 and State Lease No. 12820) that lies within the above described tract being more fully described as follows: Commencing at a point being the point of beginning of the above described nominated tract having coordinates of X = 2,682,868.73 and Y = 183,113.20; thence South 12 degrees 41 minutes 10 seconds East 4320.60 feet to a point being the point of beginning of said Operating Agreement (FSL State Lease No. 3942, State Lease No. 8063 and State Lease No. 12820) having Coordinates of X = 2,683,817.59 and Y = 178,898.08; thence South 42 degrees 01 minutes 00 seconds West 1,171.90 feet to a point having Coordinates of X = 2,683,033.18 and Y = 178,027.41; thence South 39 degrees 44 minutes 29 seconds West 724.91 feet to a point having Coordinates of X = 2,682,569.73 and Y = 177,470.00; thence South 36 degrees 52 minutes 12 seconds West 450.00 feet to a point having Coordinates of X = 2,682,299.72 and Y = 177,110.00; thence South 35 degrees 44 minutes 33 seconds West 813.16 feet to a point having Coordinates of X = 2,681,824.72 and Y = 176,450.00; thence South 36 degrees 32 minutes 28 seconds West 697.01 feet to a point having Coordinates of X = 2,681,409.72 and Y = 175,890.00; thence North 56 degrees 22 minutes 33 seconds West 2,287.94 feet to a point having Coordinates of X = 2,679,504.58 and Y = 177,156.93; thence North 42 degrees 44 minutes 56 seconds East 412.71 feet to a point having Coordinates of X = 2,679,784.73 and Y = 177,460.00; thence North 45 degrees 31 minutes 32 seconds East 385.39 feet to a point having Coordinates of X = 2,680,059.73 and Y = 177,730.00; thence North 46

degrees 36 minutes 00 seconds East 291.56 feet to a point having Coordinates of X = 2,680,271.57 and Y = 177,930.33; North 41 degrees 32 minutes 00 seconds East 427.05 feet to a point having Coordinates of X = 2,680,554.72 and Y = 178,250.00; thence North 36 degrees 28 minutes 09 seconds East 286.01 feet to a point having Coordinates of X = 2,680,724.72 and Y = 178,480.01; thence North 27 degrees 35 minutes 50 seconds East 248.24 feet to a point having Coordinates of X = 2,680,839.72 and Y = 178,700.00; thence North 16 degrees 17 minutes 00 seconds East 206.35 feet to a point having Coordinates of X = 2,680,897.58 and Y = 178,898.08; thence East 2,920.01 feet to the point of beginning, containing approximately 1,300 gross acres, **LESS AND EXCEPT** any privately owned land that may be located within the above described Tract, if any, comprising approximately 116 acres, leaving a total of **1,184 net acres** of State owned land and water bottoms within the above described Tract, all as more particularly outlined on a plat on file in the Office of Mineral Resources, Department of Natural Resources. All bearings, distances and coordinates are based on Louisiana Coordinate System of 1927, (South Zone).

NOTE: The above description of the Tract nominated for lease has been provided and corrected, where required, exclusively by the nomination party. Any mineral lease selected from this Tract and awarded by the Louisiana State Mineral Board shall be without warranty of any kind, either express, implied, or statutory, including, but not limited to, the implied warranties of merchantability and fitness for a particular purpose. Should the mineral lease awarded by the Louisiana State Mineral Board be subsequently modified, cancelled or abrogated due to the existence of conflicting leases, operating agreements, private claims or other future obligations or conditions which may affect all or any portion of the leased Tract, it shall not relieve the Lessee of the obligation to pay any bonus due thereon to the Louisiana State Mineral Board, nor shall the Louisiana State Mineral Board be obligated to refund any consideration paid by the Lessor prior to such modification, cancellation, or abrogation, including, but not limited to, bonuses, rentals and royalties.

NOTE: The Office of Mineral Resources will require a minimum bonus of \$350 per acre and a minimum royalty of 25%.

NOTE: The mineral lease is located within the Pass A Loutre WMA under the jurisdiction of the Louisiana Department of Wildlife and Fisheries which has promulgated rules and regulations for the protection of game and wildlife on the aforesaid Tract and, therefore, shall be subject to said rules and regulations, a copy of which shall be attached to the mineral lease. In addition to the specific rules and regulations applicable, the following shall apply regarding operations under this mineral lease:

1. No activities will be allowed without written authorization from the Louisiana Department of Wildlife and Fisheries.

2. Projects will be evaluated on a case by case basis. Modifications to projects may be required including, but not limited to, access routes, spoil placement, well sites, flow lines and other appurtenant structures.
3. Mitigation will be required to offset avoidable wetland impacts.
4. Removal of all structures, facilities and equipment will be required within 120 days of abandonment unless otherwise agreed to by the Louisiana Department of Wildlife and Fisheries.
5. No activities will be allowed during the hunting season unless approved by the Department.
6. Compliance with the said WMA regulations will be required unless otherwise specified by the Department.
7. Prior to submitting applications for wetland permits to Federal and State permitting agencies the lease holder shall coordinate project details with the Louisiana Department of Wildlife and Fisheries, Fur and Refuge Division. Contact person for the Department will be Mike Windham at (504) 568-5886.

NOTE: The State of Louisiana does hereby reserve, and this lease shall be subject to, the imprescriptible right of surface use in the nature of a servitude in favor of the Department of Natural Resources, including its Offices and Commissions, for the sole purpose of implementing, constructing, servicing and maintaining approved coastal zone management and/or restoration projects. Utilization of any and all rights derived under this lease by the mineral lessee, its agents, successors or assigns, shall not interfere with nor hinder the reasonable surface use by the Department of Natural Resources, its Offices or Commissions, as herein above reserved.

NOTE: The Department of Wildlife and Fisheries has designated certain areas in the coastal waters of the State of Louisiana as Oyster Seed Bed Areas. The exact location of those Seed Bed Areas must be obtained from the Department of Wildlife and Fisheries and any work done under a mineral lease from the State of Louisiana may necessarily be conducted in conformity with the rules and regulations promulgated by the said Department of Wildlife and Fisheries for Oyster Seed Bed Areas.

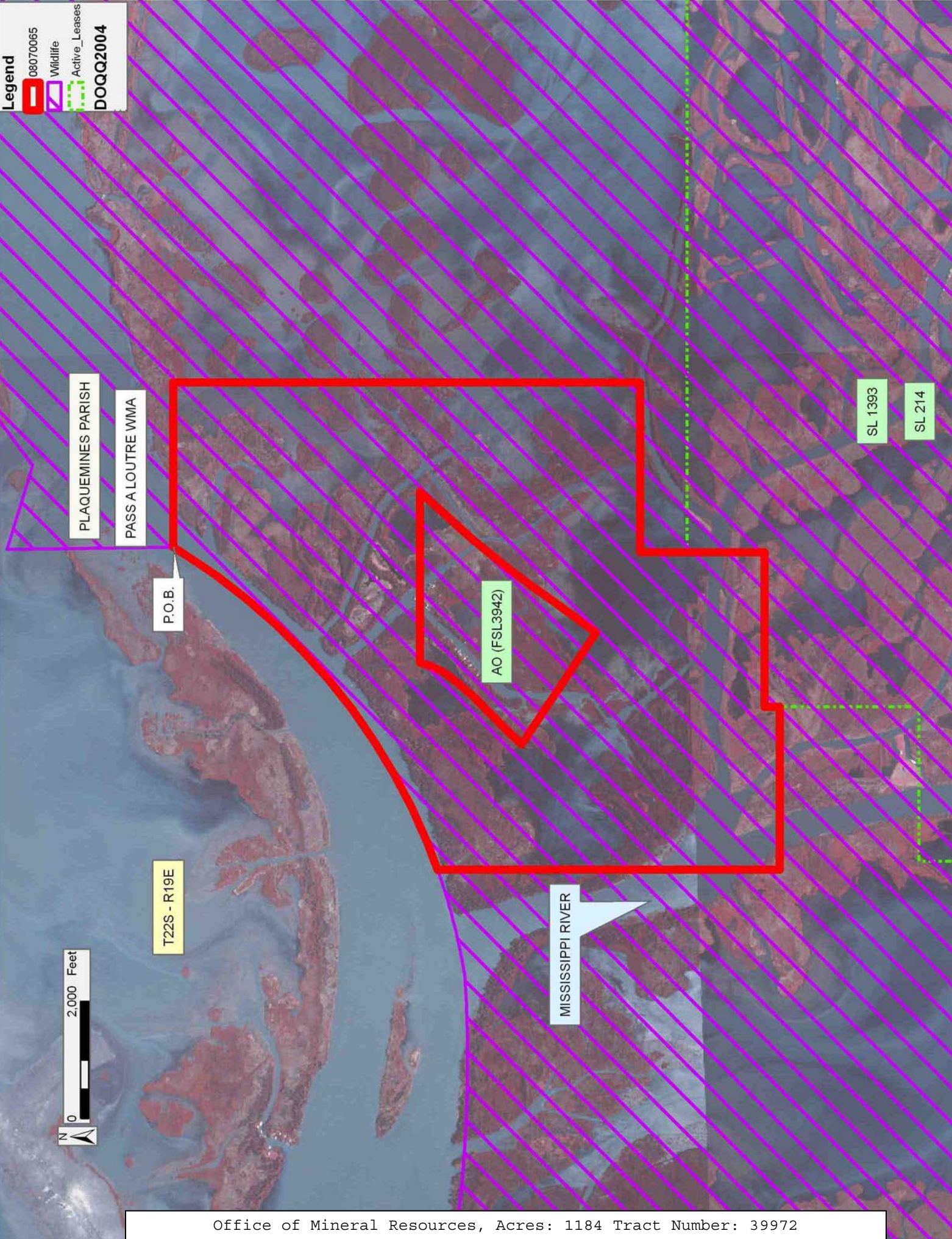
Applicant: JEREL EXPLORATION, INC.

Bidder	Cash Payment	Price/Acre	Rental	Oil	Gas	Other

Legend

- 08070065
- Wildlife
- Active_Leases

DOQQ2004



PLAQUEMINES PARISH

PASS A LOUTRE WMA

P.O.B.

T22S - R19E

AO (FSL3942)

MISSISSIPPI RIVER

SL 1393

SL 214



TRACT 39973 - Plaquemines Parish, Louisiana

All State owned lands and water bottoms located within the boundaries of the Pass-A-Loutre Wildlife Management Area as defined by the Department of Wildlife and Fisheries incorporating a title opinion from the Office of the Governor dated August 3, 1998, not presently under mineral lease by the State of Louisiana on July 9, 2008, all as set forth following: Beginning at a point having Coordinates of X = 2,685,682.16 and Y = 183,122.74; thence East 7,000.32 feet to a point having Coordinates of X = 2,692,682.48 and Y = 183,122.74; thence South approximately 8,803 feet to a point on the North boundary of State Lease No. 214, as amended, having a Coordinate of X = 2,692,682.48; thence approximately 9,912 feet along the North boundary of said State Lease No. 214 to its Northernmost Northwest corner; thence North approximately 808 feet to a point having Coordinates of X = 2,682,783.24 and Y = 175,137.84; thence East 2,898.92 feet to a point having Coordinates of X = 2,685,682.16 and Y = 175,137.84; thence North 7,984.90 feet to the Point of Beginning, containing approximately 1467 gross acres, **LESS AND EXCEPT** any privately owned land that may be located within the above described Tract, if any, comprising approximately 333 acres, leaving a total of **1,134 net acres** of State owned land and water bottoms within the above described Tract, all as more particularly outlined on a plat on file in the Office of Mineral Resources, Department of Natural Resources. All bearings, distances and coordinates are based on Louisiana Coordinate System of 1927, (South Zone).

NOTE: The above description of the Tract nominated for lease has been provided and corrected, where required, exclusively by the nomination party. Any mineral lease selected from this Tract and awarded by the Louisiana State Mineral Board shall be without warranty of any kind, either express, implied, or statutory, including, but not limited to, the implied warranties of merchantability and fitness for a particular purpose. Should the mineral lease awarded by the Louisiana State Mineral Board be subsequently modified, cancelled or abrogated due to the existence of conflicting leases, operating agreements, private claims or other future obligations or conditions which may affect all or any portion of the leased Tract, it shall not relieve the Lessee of the obligation to pay any bonus due thereon to the Louisiana State Mineral Board, nor shall the Louisiana State Mineral Board be obligated to refund any consideration paid by the Lessor prior to such modification, cancellation, or abrogation, including, but not limited to, bonuses, rentals and royalties.

NOTE: The Office of Mineral Resources will require a minimum bonus of \$350 per acre and a minimum royalty of 25%.

NOTE: The mineral lease is located within the Pass A Loutre WMA under the jurisdiction of the Louisiana Department of Wildlife and Fisheries which has promulgated rules and regulations for the protection of game and wildlife on the aforesaid Tract and, therefore, shall be subject to said rules and regulations, a copy of which shall be attached to the mineral

lease. In addition to the specific rules and regulations applicable, the following shall apply regarding operations under this mineral lease:

1. No activities will be allowed without written authorization from the Louisiana Department of Wildlife and Fisheries.
2. Projects will be evaluated on a case by case basis. Modifications to projects may be required including, but not limited to, access routes, spoil placement, well sites, flow lines and other appurtenant structures.
3. Mitigation will be required to offset avoidable wetland impacts.
4. Removal of all structures, facilities and equipment will be required within 120 days of abandonment unless otherwise agreed to by the Louisiana Department of Wildlife and Fisheries.
5. No activities will be allowed during the hunting season unless approved by the Department.
6. Compliance with the said WMA regulations will be required unless otherwise specified by the Department.
7. Prior to submitting applications for wetland permits to Federal and State permitting agencies the lease holder shall coordinate project details with the Louisiana Department of Wildlife and Fisheries, Fur and Refuge Division. Contact person for the Department will be Mike Windham at (504) 568-5886.



NOTE: The State of Louisiana does hereby reserve, and this lease shall be subject to, the imprescriptible right of surface use in the nature of a servitude in favor of the Department of Natural Resources, including its Offices and Commissions, for the sole purpose of implementing, constructing, servicing and maintaining approved coastal zone management and/or restoration projects. Utilization of any and all rights derived under this lease by the mineral lessee, its agents, successors or assigns, shall not interfere with nor hinder the reasonable surface use by the Department of Natural Resources, its Offices or Commissions, as herein above reserved.

NOTE: The Department of Wildlife and Fisheries has designated certain areas in the coastal waters of the State of Louisiana as Oyster Seed Bed Areas. The exact location of those Seed Bed Areas must be obtained from the Department of Wildlife and Fisheries and any work done under a mineral lease from the State of Louisiana may necessarily be conducted in conformity with the rules and regulations promulgated by the said Department of Wildlife and Fisheries for Oyster Seed Bed Areas.

Applicant: JEREL EXPLORATION, INC.

Bidder	Cash Payment	Price/Acre	Rental	Oil	Gas	Other

Legend

-  08070063
-  Wildlife
-  Active_Leases

DOQQ2004

PLAQUEMINES PARISH

PASS A LOUTRE WMA

P.O.B.

SL 1393

SL 214



TRACT 39974 - Plaquemines Parish, Louisiana

All State owned lands and water bottoms located within the boundaries of the Pass-A-Loutre Wildlife Management Area as defined by the Department of Wildlife and Fisheries incorporating a title opinion from the Office of the Governor dated August 3, 1998, not presently under mineral lease by the State of Louisiana on July 9, 2008, all as set forth following: Beginning at a point on the North boundary of Pass-A-Loutre Wildlife Management Area having Coordinates of X = 2,673,295.33 and Y = 178,096.18; thence Easterly along the said Pass-A-Loutre Wildlife Management Area the following courses: along an arc to the left with a radius of 22,528.00 feet and a long cord bearing North 89 degrees 17 minutes 17 seconds East 2,230.90 feet to a point having Coordinates of X = 2,675,526.05 and Y = 178,123.90; along an arc to the left with an arc to the left with a radius of 10,510.00 feet and a long cord bearing North 75 degrees 36 minuets 10 seconds East 1,898.99 feet to a point having Coordinates of X = 2,677,365.40 and Y = 178,596.07; thence South 5,847.97 feet to a point having Coordinates of X = 2,677,365.40 and Y = 172,748.10; thence approximately 2,781 feet to a point being on the Western corner of State Lease No. 214 that intersects with a line that bears East from a Coordinate of X = 2,677,365.40 and Y = 172,748.10; thence along the western boundary of said State Lease No. 214 the following courses: Southerly; Westerly; and Southerly to a point that intersects with a line that bears East from a point having Coordinates of X = 2,673,295.33 and Y = 168,738.77; thence West approximately 4213 feet to a point having Coordinates of X = 2,673,295.33 and Y = 168,738.77; thence North 9,357.41 feet to the Point of Beginning, containing approximately 1041 gross acres, **LESS AND EXCEPT** any privately owned land that may be located within the above described Tract, if any, comprising approximately 21 acres, leaving a total of **1,020 net acres** of State owned land and water bottoms within the above described Tract, all as more particularly outlined on a plat on file in the Office of Mineral Resources, Department of Natural Resources. All bearings, distances and coordinates are based on Louisiana Coordinate System of 1927, (South Zone).

NOTE: The above description of the Tract nominated for lease has been provided and corrected, where required, exclusively by the nomination party. Any mineral lease selected from this Tract and awarded by the Louisiana State Mineral Board shall be without warranty of any kind, either express, implied, or statutory, including, but not limited to, the implied warranties of merchantability and fitness for a particular purpose. Should the mineral lease awarded by the Louisiana State Mineral Board be subsequently modified, cancelled or abrogated due to the existence of conflicting leases, operating agreements, private claims or other future obligations or conditions which may affect all or any portion of the leased Tract, it shall not relieve the Lessee of the obligation to pay any bonus due thereon to the Louisiana State Mineral Board, nor shall the Louisiana State Mineral Board be obligated to refund any consideration paid by the Lessor prior to such modification, cancellation, or abrogation, including, but not limited to, bonuses, rentals and royalties.

NOTE: The Office of Mineral Resources will require a minimum bonus of \$350 per acre and a minimum royalty of 25%.

NOTE: The mineral lease is located within the Pass A Loutre WMA under the jurisdiction of the Louisiana Department of Wildlife and Fisheries which has promulgated rules and regulations for the protection of game and wildlife on the aforesaid Tract and, therefore, shall be subject to said rules and regulations, a copy of which shall be attached to the mineral lease. In addition to the specific rules and regulations applicable, the following shall apply regarding operations under this mineral lease:

1. No activities will be allowed without written authorization from the Louisiana Department of Wildlife and Fisheries.
2. Projects will be evaluated on a case by case basis. Modifications to projects may be required including, but not limited to, access routes, spoil placement, well sites, flow lines and other appurtenant structures.
3. Mitigation will be required to offset avoidable wetland impacts.
4. Removal of all structures, facilities and equipment will be required within 120 days of abandonment unless otherwise agreed to by the Louisiana Department of Wildlife and Fisheries.
5. No activities will be allowed during the hunting season unless approved by the Department.
6. Compliance with the said WMA regulations will be required unless otherwise specified by the Department.
7. Prior to submitting applications for wetland permits to Federal and State permitting agencies the lease holder shall coordinate project details with the Louisiana Department of Wildlife and Fisheries, Fur and Refuge Division. Contact person for the Department will be Mike Windham at (504) 568-5886.



NOTE: The State of Louisiana does hereby reserve, and this lease shall be subject to, the imprescriptible right of surface use in the nature of a servitude in favor of the Department of Natural Resources, including its Offices and Commissions, for the sole purpose of implementing, constructing, servicing and maintaining approved coastal zone management and/or restoration projects. Utilization of any and all rights derived under this lease by the mineral lessee, its agents, successors or assigns, shall not interfere with nor hinder the reasonable surface use by the Department of Natural Resources, its Offices or Commissions, as herein above reserved.

NOTE: The Department of Wildlife and Fisheries has designated certain areas in the coastal waters of the State of Louisiana as Oyster Seed Bed Areas. The exact location of those Seed Bed Areas must be obtained from the Department of Wildlife and Fisheries and any work done under a mineral lease from the State of Louisiana may necessarily be conducted in conformity with the rules and regulations promulgated by the said Department of Wildlife and Fisheries for Oyster Seed Bed Areas.

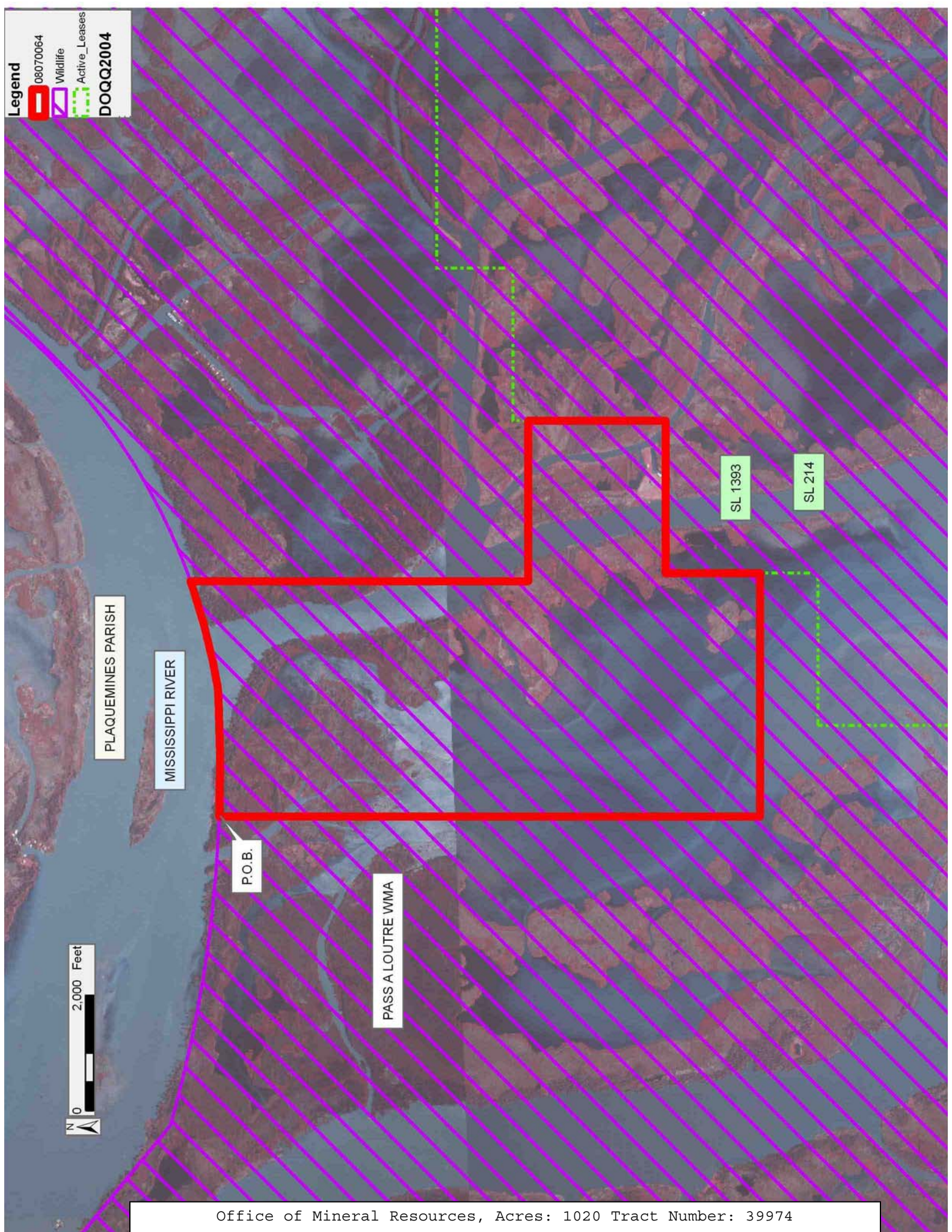
Applicant: JEREL EXPLORATION, INC.

Bidder	Cash Payment	Price/Acre	Rental	Oil	Gas	Other

Legend

-  08070064
-  Wildlife
-  Active_Leases

DOQQ2004



PLAQUEMINES PARISH

MISSISSIPPI RIVER

P.O.B.

PASS A LOUTRE WMA

SL 1393

SL 214

