

TRACT 39956 - St. Mary Parish, Louisiana

All of the lands now or formerly constituting the beds and bottoms of all water bodies of every nature and description as to which title is vested in the State of Louisiana, together with all islands arising therein and other lands formed by accretion or by reliction, where allowed by law, excepting tax adjudicated lands, and not presently under mineral lease on July 9, 2008, situated in St. Mary Parish, Louisiana, and more particularly described as follows: Beginning at the Northeast corner of State Lease No. 18348 having Coordinates of X = 1,954,962.89 and Y = 324,266.41; thence South 89 degrees 01 minutes 25 seconds West 3.52 feet along the Northern boundary of said State Lease No. 18348 to the Southernmost Southeast corner of State Lease No. 19613 having Coordinates of X = 1,954,959.37 and Y = 324,266.35; thence along the boundary of said State Lease No. 19613 the following courses: North 00 degrees 14 minutes 16 seconds East 838.66 feet to a point having Coordinates of X = 1,954,962.85 and Y = 325,105.00 and East 2,573.12 feet to its Easternmost Southeast corner, also being the Southwest corner of State Lease No. 19366 having Coordinates of X = 1,957,535.97 and Y = 325,105.00; thence East 2,659.10 feet along the Southern boundary of said State Lease No. 19366 to its Southernmost Southeast corner, also being the Westernmost Southwest corner of State Lease No. 19370 having Coordinates of X = 1,960,195.07 and Y = 325,105.00; thence along the boundary of said State Lease No. 19370 the following courses: East 79.22 feet to a point having Coordinates of X = 1,960,274.29 and Y = 325,105.00 and South 764.57 feet to its Southwest corner, also being the Northwest corner of State Lease No. 19614 having Coordinates of X = 1,960,274.29 and Y = 324,340.43; thence South approximately 4,838 feet along the West boundary of said State Lease No. 19614 to a point on the Northern boundary of the Atchafalaya Delta Wildlife Management Area having a Coordinate of X = 1,960,274.29; thence Westerly along the meanders of the boundary of said Atchafalaya Delta Wildlife Management Area to a point of intersection with the Eastern boundary of said State Lease No. 18348; thence along the boundary of said State Lease No. 18348 the following courses: Northerly approximately 44 feet to a point having Coordinates of X = 1,954,936.76 and Y = 318,821.97 and North 00 degrees 16 minutes 30 seconds East 5,444.50 feet to the point of beginning, **LESS AND EXCEPT** that portion, if any, of the Atchafalaya Delta Wildlife Management Area, that may lie within the above described tract, containing approximately 13 gross acres and **1.95 net acres**, all as more particularly outlined on a plat on file in the Office of Mineral Resources, Department of Natural Resources. All bearings, distances and coordinates are based on Louisiana Coordinate System of 1927, (North or South Zone), where applicable.

NOTE: The above description of the Tract nominated for lease has been provided and corrected, where required, exclusively by the nomination party. Any mineral lease selected from this Tract and awarded by the Louisiana State Mineral Board shall be without warranty of any kind, either express, implied, or statutory, including, but not limited to, the implied warranties of merchantability and fitness for a particular

purpose. Should the mineral lease awarded by the Louisiana State Mineral Board be subsequently modified, cancelled or abrogated due to the existence of conflicting leases, operating agreements, private claims or other future obligations or conditions which may affect all or any portion of the leased Tract, it shall not relieve the Lessee of the obligation to pay any bonus due thereon to the Louisiana State Mineral Board, nor shall the Louisiana State Mineral Board be obligated to refund any consideration paid by the Lessor prior to such modification, cancellation, or abrogation, including, but not limited to, bonuses, rentals and royalties.

NOTE: The State of Louisiana does hereby reserve, and this lease shall be subject to, the imprescriptible right of surface use in the nature of a servitude in favor of the Department of Natural Resources, including its Offices and Commissions, for the sole purpose of implementing, constructing, servicing and maintaining approved coastal zone management and/or restoration projects. Utilization of any and all rights derived under this lease by the mineral lessee, its agents, successors or assigns, shall not interfere with nor hinder the reasonable surface use by the Department of Natural Resources, its Offices or Commissions, as herein above reserved.

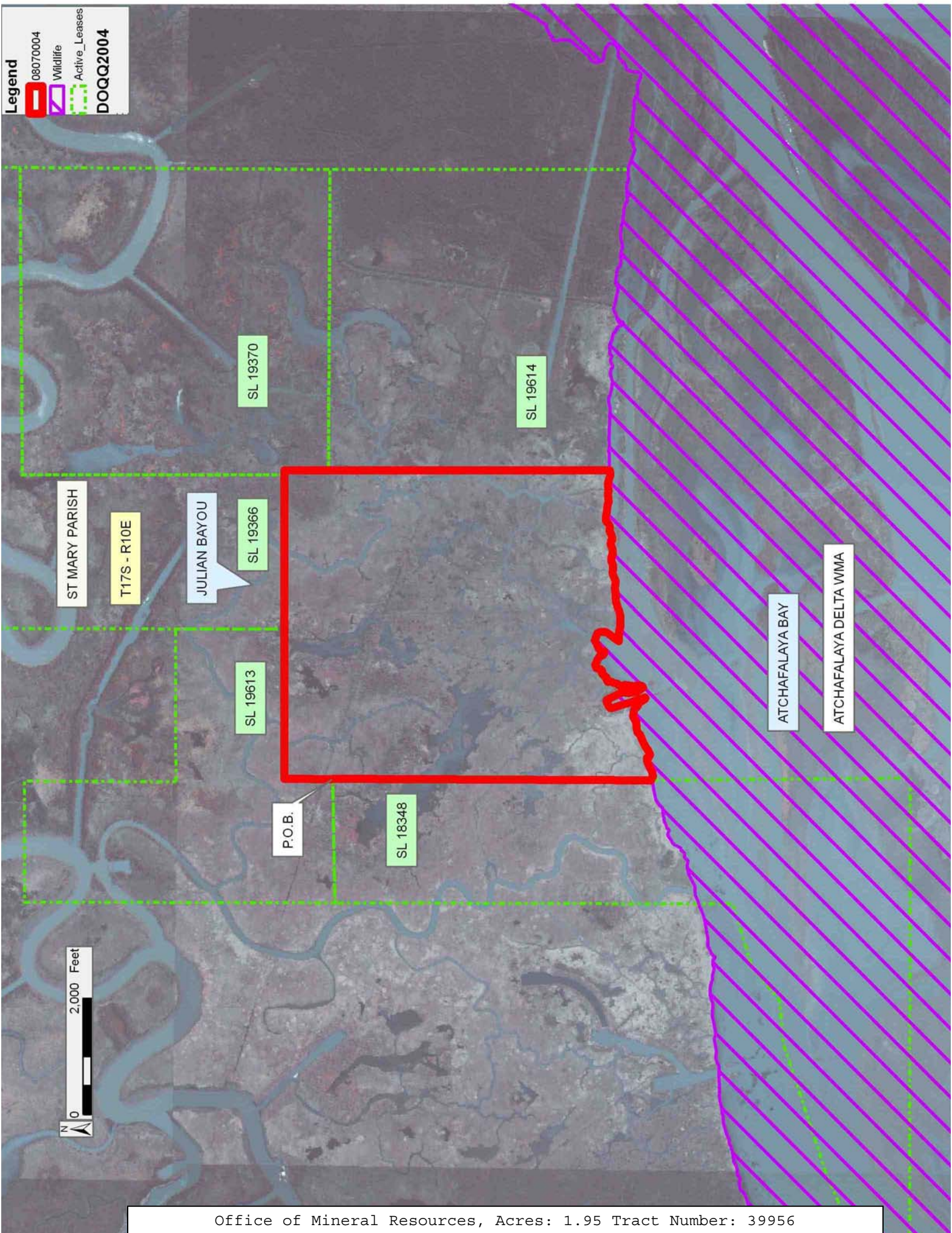
Applicant: FLEETWOOD RESOURCES, INC.

Bidder	Cash Payment	Price/Acre	Rental	Oil	Gas	Other

Legend

-  08070004
-  Wildlife
-  Active_Leases

DOQQ2004



TRACT 39957 - Iberia Parish, Louisiana

All of the lands now or formerly constituting the beds and bottoms of all water bodies of every nature and description as to which title is vested in the State of Louisiana, together with all islands arising therein and other lands formed by accretion or by reliction, where allowed by law, excepting tax adjudicated lands, and not presently under mineral lease on July 9, 2008, situated in Iberia Parish, Louisiana, and more particularly described as follows: Beginning at a point having Coordinates of X = 1,869,590.00 and Y = 312,539.65; thence East 10,860.00 feet to a point having Coordinates of X = 1,880,450.00 and Y = 312,539.65; thence South 7,039.65 feet to the Easternmost Northeast corner of State Lease No. 19376 having Coordinates of X = 1,880,450.00 and Y = 305,500.00; thence along the boundary of said State Lease No. 19376 the following courses: West 2,275.00 feet; North 2,275.00 feet and West 3,872.00 feet to its Northwest corner also being the Northeast corner of State Lease No. 19374 having Coordinates of X = 1,874,303.00 and Y = 307,775.00; thence West 4,713.00 feet along the North boundary of said State Lease No. 19374 to its Northwest corner having Coordinates of X = 1,869,590.00 and Y = 307,775.00; thence North 4,764.65 feet to the point of beginning, containing approximately **1,306.70 acres**, all as more particularly outlined on a plat on file in the Office of Mineral Resources, Department of Natural Resources. All bearings, distances and coordinates are based on Louisiana Coordinate System of 1927, (North or South Zone), where applicable.

NOTE: The above description of the Tract nominated for lease has been provided and corrected, where required, exclusively by the nomination party. Any mineral lease selected from this Tract and awarded by the Louisiana State Mineral Board shall be without warranty of any kind, either express, implied, or statutory, including, but not limited to, the implied warranties of merchantability and fitness for a particular purpose. Should the mineral lease awarded by the Louisiana State Mineral Board be subsequently modified, cancelled or abrogated due to the existence of conflicting leases, operating agreements, private claims or other future obligations or conditions which may affect all or any portion of the leased Tract, it shall not relieve the Lessee of the obligation to pay any bonus due thereon to the Louisiana State Mineral Board, nor shall the Louisiana State Mineral Board be obligated to refund any consideration paid by the Lessor prior to such modification, cancellation, or abrogation, including, but not limited to, bonuses, rentals and royalties.

NOTE: The Office of Mineral Resources will require a minimum bonus of \$350 per acre and a minimum royalty of 25%.

NOTE: The above described tract may be in the vicinity of existing shell reefs where drilling and dredging operations must be conducted in strict conformity with the regulations adopted by the Louisiana Department of Wildlife and Fisheries and/or the U.S. Corps of Engineers, U.S. Army.

NOTE: The State of Louisiana does hereby reserve, and this lease shall be subject to, the imprescriptible right of surface use in the nature of a servitude in favor of the Department of Natural Resources, including its Offices and Commissions, for the sole purpose of implementing, constructing, servicing and maintaining approved coastal zone management and/or restoration projects. Utilization of any and all rights derived under this lease by the mineral lessee, its agents, successors or assigns, shall not interfere with nor hinder the reasonable surface use by the Department of Natural Resources, its Offices or Commissions, as herein above reserved.

NOTE: The Department of Wildlife and Fisheries has designated certain areas in the coastal waters of the State of Louisiana as Oyster Seed Bed Areas. The exact location of those Seed Bed Areas must be obtained from the Department of Wildlife and Fisheries and any work done under a mineral lease from the State of Louisiana may necessarily be conducted in conformity with the rules and regulations promulgated by the said Department of Wildlife and Fisheries for Oyster Seed Bed Areas.

NOTE: All or a portion of this Tract lies within one nautical mile of the boundary of the Russell Sage or Marsh Island Wildlife Refuge and Game Preserve. Any activities connected with this lease conducted within this Tract which may pose potential environmental impacts to the said Wildlife Refuge and Game Preserve should be coordinated with the Louisiana Department of Wildlife and Fisheries.

Applicant: PATRICK L. DONOHUE PETROLEUM PROPERTIES, INC.

Bidder	Cash Payment	Price/Acre	Rental	Oil	Gas	Other

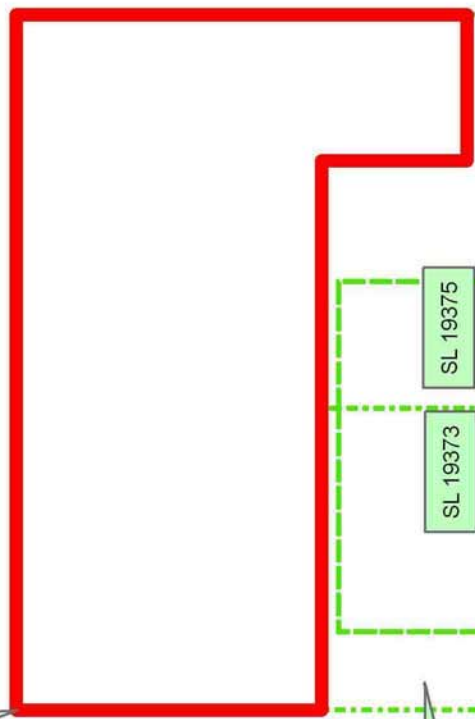
Legend
08070010
Active_Leases



IBERIA PARISH

VERMILION BAY

P.O.B.



SL 19374

SL 19373

SL 19375

SL 19376

GULF OF MEXICO

TRACT 39958 - Iberia Parish, Louisiana

All of the lands now or formerly constituting the beds and bottoms of all water bodies of every nature and description as to which title is vested in the State of Louisiana, together with all islands arising therein and other lands formed by accretion or by reliction, where allowed by law, excepting tax adjudicated lands, and not presently under mineral lease on July 9, 2008, situated in Iberia Parish, Louisiana, and more particularly described as follows: Beginning at a point having Coordinates of X = 1,864,091.67 and Y = 312,539.65; thence East 5,498.33 feet to a point having Coordinates of X = 1,869,590.00 and Y = 312,539.65; thence South 4,764.65 feet to the Northwest corner of State Lease No. 19374 having Coordinates of X = 1,869,590.00 and Y = 307,775.00; thence South 2,763.00 feet along the West boundary of said State Lease No. 19374 to its Southwest corner, also being the Northernmost Northwest corner of State Lease No. 19381 having Coordinates of X = 1,869,590.00 and Y = 305,012.00; thence along the boundary of said State Lease No. 19381 the following courses: South 837.00 feet; West 1,630.00 feet and South 3,635.00 feet to its Southwest corner having Coordinates of X = 1,867,960.00 and Y = 300,540.00; thence West 3,868.33 feet to a point having Coordinates of X = 1,864,091.67 and Y = 300,540.00; thence North 11,999.65 feet to the point of beginning, containing approximately **1,378.63 acres**, all as more particularly outlined on a plat on file in the Office of Mineral Resources, Department of Natural Resources. All bearings, distances and coordinates are based on Louisiana Coordinate System of 1927, (North or South Zone), where applicable.

NOTE: The above description of the Tract nominated for lease has been provided and corrected, where required, exclusively by the nomination party. Any mineral lease selected from this Tract and awarded by the Louisiana State Mineral Board shall be without warranty of any kind, either express, implied, or statutory, including, but not limited to, the implied warranties of merchantability and fitness for a particular purpose. Should the mineral lease awarded by the Louisiana State Mineral Board be subsequently modified, cancelled or abrogated due to the existence of conflicting leases, operating agreements, private claims or other future obligations or conditions which may affect all or any portion of the leased Tract, it shall not relieve the Lessee of the obligation to pay any bonus due thereon to the Louisiana State Mineral Board, nor shall the Louisiana State Mineral Board be obligated to refund any consideration paid by the Lessor prior to such modification, cancellation, or abrogation, including, but not limited to, bonuses, rentals and royalties.

NOTE: The Office of Mineral Resources will require a minimum bonus of \$350 per acre and a minimum royalty of 25%.

NOTE: The above described tract may be in the vicinity of existing shell reefs where drilling and dredging operations must be conducted in strict conformity with the regulations adopted by the Louisiana Department of Wildlife and Fisheries and/or the U.S. Corps of Engineers, U.S. Army.

NOTE: The State of Louisiana does hereby reserve, and this lease shall be subject to, the imprescriptible right of surface use in the nature of a servitude in favor of the Department of Natural Resources, including its Offices and Commissions, for the sole purpose of implementing, constructing, servicing and maintaining approved coastal zone management and/or restoration projects. Utilization of any and all rights derived under this lease by the mineral lessee, its agents, successors or assigns, shall not interfere with nor hinder the reasonable surface use by the Department of Natural Resources, its Offices or Commissions, as herein above reserved.

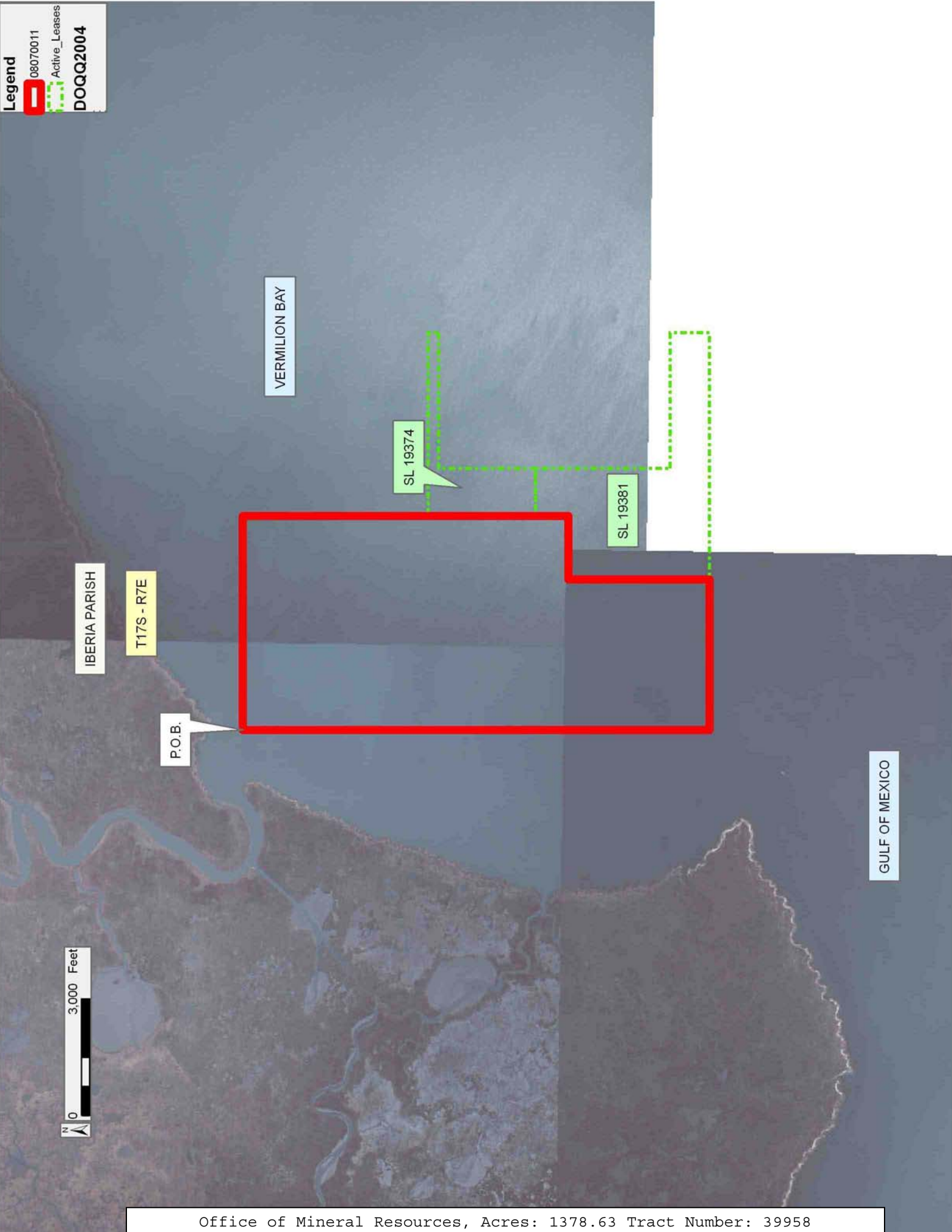
NOTE: The Department of Wildlife and Fisheries has designated certain areas in the coastal waters of the State of Louisiana as Oyster Seed Bed Areas. The exact location of those Seed Bed Areas must be obtained from the Department of Wildlife and Fisheries and any work done under a mineral lease from the State of Louisiana may necessarily be conducted in conformity with the rules and regulations promulgated by the said Department of Wildlife and Fisheries for Oyster Seed Bed Areas.

NOTE: All or a portion of this Tract lies within one nautical mile of the boundary of the Russell Sage or Marsh Island Wildlife Refuge and Game Preserve. Any activities connected with this lease conducted within this Tract which may pose potential environmental impacts to the said Wildlife Refuge and Game Preserve should be coordinated with the Louisiana Department of Wildlife and Fisheries.

Applicant: PATRICK L. DONOHUE PETROLEUM PROPERTIES, INC.

Bidder	Cash Payment	Price/Acre	Rental	Oil	Gas	Other

Legend
08070011
Active_Leases
DOQQ2004



TRACT 39959 - Portion of Blocks 2, 3, 6, and 7, Eugene Island Area, Revised, Iberia Parish, Louisiana

All of the lands now or formerly constituting the beds and bottoms of all water bodies of every nature and description as to which title is vested in the State of Louisiana, together with all islands arising therein and other lands formed by accretion or by reliction, where allowed by law, excepting tax adjudicated lands, and not presently under mineral lease on July 9, 2008, situated in Iberia Parish, Louisiana, and more particularly described as follows: Beginning at a point within Block 2, Eugene Island Area, Revised, being located on the South boundary of State Lease No. 19410 having Coordinates of X = 1,860,217.00 and Y = 294,634.00; thence East 4,583.56 feet along the South boundary of said State Lease No. 19410 to its Southeast corner, also being a point on the West boundary of State Lease No. 19283 having Coordinates of X = 1,864,800.56 and Y = 294,634.00; thence along the boundary of said State Lease No. 19283 the following courses: South 2,846.00 feet to a point having Coordinates of X = 1,864,800.56 and Y = 291,788.00; South 86 degrees 01 minutes 38 seconds East 2,006.26 feet to a point having Coordinates of X = 1,866,802.00 and Y = 291,649.00 and South 82 degrees 41 minutes 04 seconds East 1,614.35 feet to a point having Coordinates of X = 1,868,403.21 and Y = 291,443.44; thence South 13,605.56 feet to a point on the Eastern boundary of State Lease No. 19417 having Coordinates of X = 1,868,403.21 and Y = 277,837.87; thence along the boundary of said State Lease No. 19417 the following courses: North 30 degrees 46 minutes 40 seconds West 161.43 feet to a point having Coordinates of X = 1,868,320.60 and Y = 277,976.57 and West 2,933.27 feet to the Southeast corner of State Lease No. 19153 having Coordinates of X = 1,865,387.33 and Y = 277,976.57; thence along the boundary of said State Lease No. 19153 the following courses: North 2,290.98 feet to a point having Coordinates of X = 1,865,387.33 and Y = 280,267.55 and West 3,572.87 feet to a point on the boundary of State Lease No. 19286 having Coordinates of X = 1,861,814.46 and Y = 280,267.55; thence along the boundary of said State Lease No. 19286 the following courses: North 2,099.45 feet to a point having Coordinates of X = 1,861,814.46 and Y = 282,367.00 and West 1,597.46 feet to a point having Coordinates of X = 1,860,217.00 and Y = 282,367.00; thence North 12,267.00 feet to the point of beginning, **LESS AND EXCEPT** all of State Lease No. 19411, State Lease No. 19413, and State Lease No. 19549 that lies within the above described tract being more fully described as follows: Commencing at the point of beginning of the above described nominated tract having Coordinates of X = 1,860,217.00 and Y = 294,634.00; thence South 01 degrees 34 minutes 59 seconds East 8,977.43 feet to the Northwest corner of State Lease No. 19411 having Coordinates of X = 1,860,465.00 and Y = 285,660.00; thence North 58 degrees 14 minutes 57 seconds East 5,098.59 feet along the North boundary of said State Lease No. 19411 to its Northeast corner, also being the Northwest corner of State Lease No. 19413 having Coordinates of X = 1,864,800.56 and Y = 288,343.01; thence North 58 degrees 14 minutes 55 seconds East 269.82 feet along the North boundary of said State Lease No. 19413 to its Northeast corner, also being the Northwest corner of State Lease No. 19549 having Coordinates of X =

1,865,030.00 and Y = 288,485.00; thence along the boundary of said State Lease No. 19549 the following courses: North 70 degrees 19 minutes 45 seconds East 2,272.63 feet to a point having Coordinates of X = 1,867,170.00 and Y = 289,250.00 and South 02 degrees 49 minutes 32 seconds East 4,260.18 feet to the Southeast corner of State Lease No. 19413 having Coordinates of X = 1,867,380.00 and Y = 284,995.00; thence South 77 degrees 09 minutes 43 seconds West 2,645.57 feet along the South boundary of said State Lease No. 19413 to its Southwest corner, also being the Southeast corner of said State Lease No. 19411 having Coordinates of X = 1,864,800.56 and Y = 284,407.16; thence along the boundary of said State Lease No. 19411 the following courses: South 77 degrees 09 minutes 42 seconds West 4,082.62 feet to a point having Coordinates of X = 1,860,820.00 and Y = 283,500.00 and North 09 degrees 20 minutes 00 seconds West 2,188.98 feet back to its Northwest corner, the nominated tract containing approximately **2,000.00 acres**, all as more particularly outlined on a plat on file in the Office of Mineral Resources, Department of Natural Resources. All bearings, distances and coordinates are based on Louisiana Coordinate System of 1927, (North or South Zone), where applicable.

NOTE: The above description of the Tract nominated for lease has been provided and corrected, where required, exclusively by the nomination party. Any mineral lease selected from this Tract and awarded by the Louisiana State Mineral Board shall be without warranty of any kind, either express, implied, or statutory, including, but not limited to, the implied warranties of merchantability and fitness for a particular purpose. Should the mineral lease awarded by the Louisiana State Mineral Board be subsequently modified, cancelled or abrogated due to the existence of conflicting leases, operating agreements, private claims or other future obligations or conditions which may affect all or any portion of the leased Tract, it shall not relieve the Lessee of the obligation to pay any bonus due thereon to the Louisiana State Mineral Board, nor shall the Louisiana State Mineral Board be obligated to refund any consideration paid by the Lessor prior to such modification, cancellation, or abrogation, including, but not limited to, bonuses, rentals and royalties.

NOTE: The Office of Mineral Resources will require a minimum bonus of \$350 per acre and a minimum royalty of 25%.

NOTE: The above described tract may be in the vicinity of existing shell reefs where drilling and dredging operations must be conducted in strict conformity with the regulations adopted by the Louisiana Department of Wildlife and Fisheries and/or the U.S. Corps of Engineers, U.S. Army.

NOTE: The State of Louisiana does hereby reserve, and this lease shall be subject to, the imprescriptible right of surface use in the nature of a servitude in favor of the Department of Natural Resources, including its Offices and Commissions, for the sole purpose of implementing, constructing, servicing and maintaining approved coastal zone management

and/or restoration projects. Utilization of any and all rights derived under this lease by the mineral lessee, its agents, successors or assigns, shall not interfere with nor hinder the reasonable surface use by the Department of Natural Resources, its Offices or Commissions, as herein above reserved.




NOTE: The Department of Wildlife and Fisheries has designated certain areas in the coastal waters of the State of Louisiana as Oyster Seed Bed Areas. The exact location of those Seed Bed Areas must be obtained from the Department of Wildlife and Fisheries and any work done under a mineral lease from the State of Louisiana may necessarily be conducted in conformity with the rules and regulations promulgated by the said Department of Wildlife and Fisheries for Oyster Seed Bed Areas.

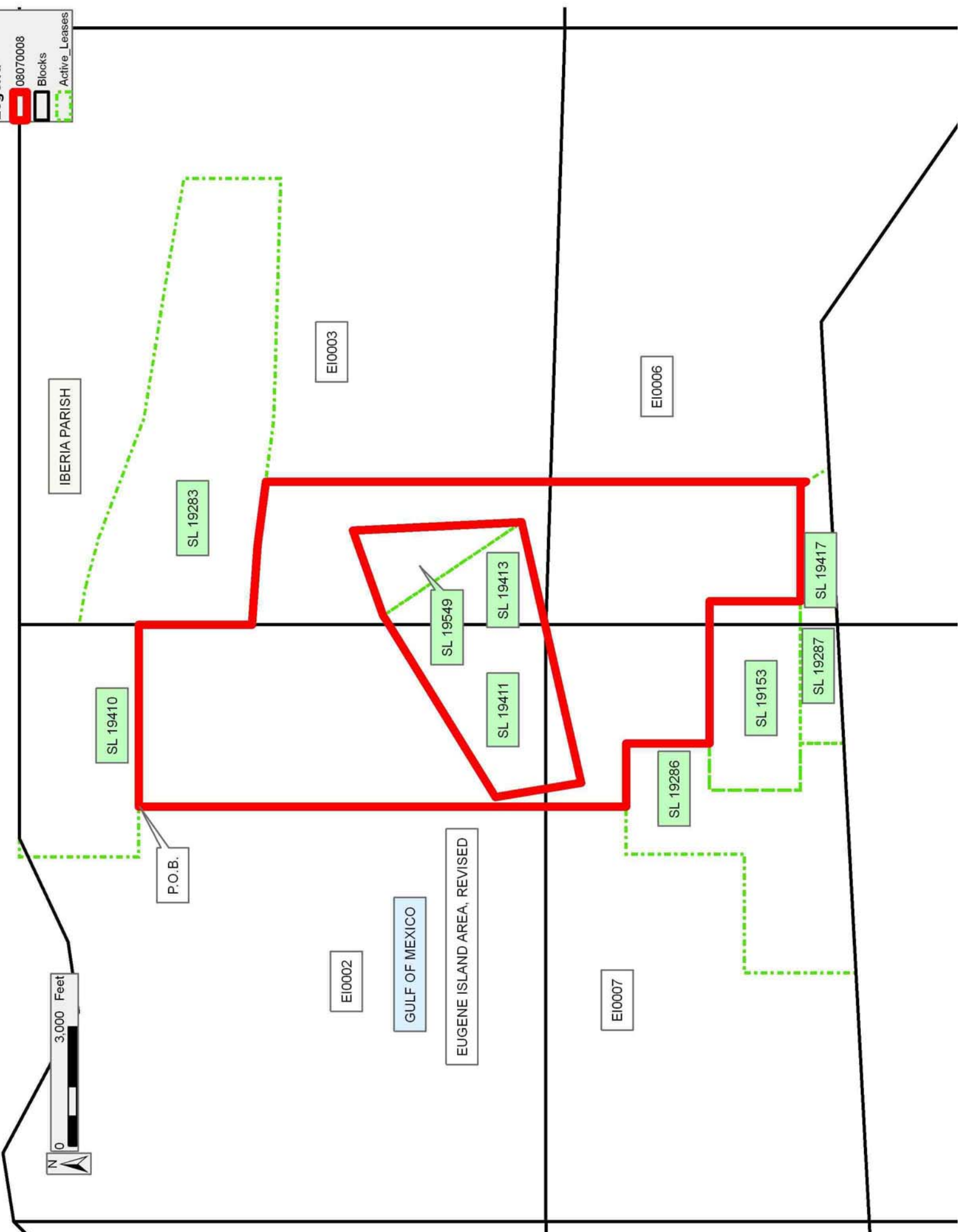
NOTE: All or a portion of this Tract lies within one nautical mile of the boundary of the Russell Sage or Marsh Island Wildlife Refuge and Game Preserve. Any activities connected with this lease conducted within this Tract which may pose potential environmental impacts to the said Wildlife Refuge and Game Preserve should be coordinated with the Louisiana Department of Wildlife and Fisheries.

Applicant: WAINWRIGHT & BOYER LAND SERVICES, L.L.C.

Bidder	Cash Payment	Price/Acre	Rental	Oil	Gas	Other

Legend

-  08070008
-  Blocks
-  Active_Leases



TRACT 39960 - Portion of Blocks 2, and 7, Eugene Island Area, Revised, Iberia Parish, Louisiana

All of the lands now or formerly constituting the beds and bottoms of all water bodies of every nature and description as to which title is vested in the State of Louisiana, together with all islands arising therein and other lands formed by accretion or by reliction, where allowed by law, excepting tax adjudicated lands, and not presently under mineral lease on July 9, 2008, situated in Iberia Parish, Louisiana, and more particularly described as follows: Beginning at a point within Block 2, Eugene Island Area, Revised, having Coordinates of X = 1,860,217.00 and Y = 291,012.58; thence South 8,645.58 feet to a point on the North boundary of State Lease No. 19286 having Coordinates of X = 1,860,217.00 and Y = 282,367.00; thence West 1,192.00 feet along the North boundary of said State Lease No. 19286 to its Northwest corner, also being a point on the East boundary of State Lease No. 19299 having Coordinates of X = 1,859,025.00 and Y = 282,367.00; thence along the boundary of said State Lease No. 19299 the following courses: North 1,075.20 feet to a point having Coordinates of X = 1,859,025.00 and Y = 283,442.20; South 51 degrees 28 minutes 35 seconds West 5,662.41 feet to a point having Coordinates of X = 1,854,595.00 and Y = 279,915.44 and South 525.44 feet to its Southwest corner having Coordinates of X = 1,854,595.00 and Y = 279,390.00; thence West 4,816.60 feet to a point on the West line of Block 7, Eugene Island Area, Revised, having Coordinates of X = 1,849,778.40 and Y = 279,390.00; thence North 1,166.20 feet along the West line of said Block 7 to a point on the Southern boundary of State Lease No. 19414 having Coordinates of X = 1,849,778.40 and Y = 280,556.20; thence along the boundary of said State Lease No. 19414 the following courses: North 51 degrees 40 minutes 57 seconds East 3,489.43 feet to a point having Coordinates of X = 1,852,516.16 and Y = 282,719.71; North 17 degrees 15 minutes 18 seconds West 1,750.22 feet to a point having Coordinates of X = 1,851,997.00 and Y = 284,391.16; North 2,407.58 feet to a point having Coordinates of X = 1,851,997.00 and Y = 286,798.74 and North 77 degrees 07 minutes 04 seconds West 1,697.14 feet to a point on the Eastern boundary of State Lease No. 19297 having Coordinates of X = 1,850,342.58 and Y = 287,177.11; thence along the boundary of said State Lease No. 19297 the following courses: North 41 degrees 33 minutes 40 seconds East 4,527.19 feet to a point having Coordinates of X = 1,853,346.00 and Y = 290,564.57 and North 448.01 feet to its Northeast corner having Coordinates of X = 1,853,346.00 and Y = 291,012.58; thence East 6,871.00 feet to the point of beginning, containing approximately **1,975.83 acres**, all as more particularly outlined on a plat on file in the Office of Mineral Resources, Department of Natural Resources. All bearings, distances and coordinates are based on Louisiana Coordinate System of 1927, (North or South Zone), where applicable.

NOTE: The above description of the Tract nominated for lease has been provided and corrected, where required, exclusively by the nomination party. Any mineral lease selected from this Tract and awarded by the Louisiana State Mineral Board shall be without warranty of any kind,

either express, implied, or statutory, including, but not limited to, the implied warranties of merchantability and fitness for a particular purpose. Should the mineral lease awarded by the Louisiana State Mineral Board be subsequently modified, cancelled or abrogated due to the existence of conflicting leases, operating agreements, private claims or other future obligations or conditions which may affect all or any portion of the leased Tract, it shall not relieve the Lessee of the obligation to pay any bonus due thereon to the Louisiana State Mineral Board, nor shall the Louisiana State Mineral Board be obligated to refund any consideration paid by the Lessor prior to such modification, cancellation, or abrogation, including, but not limited to, bonuses, rentals and royalties.

NOTE: The Office of Mineral Resources will require a minimum bonus of \$350 per acre and a minimum royalty of 25%.

NOTE: The above described tract may be in the vicinity of existing shell reefs where drilling and dredging operations must be conducted in strict conformity with the regulations adopted by the Louisiana Department of Wildlife and Fisheries and/or the U.S. Corps of Engineers, U.S. Army.

NOTE: The State of Louisiana does hereby reserve, and this lease shall be subject to, the imprescriptible right of surface use in the nature of a servitude in favor of the Department of Natural Resources, including its Offices and Commissions, for the sole purpose of implementing, constructing, servicing and maintaining approved coastal zone management and/or restoration projects. Utilization of any and all rights derived under this lease by the mineral lessee, its agents, successors or assigns, shall not interfere with nor hinder the reasonable surface use by the Department of Natural Resources, its Offices or Commissions, as herein above reserved.

NOTE: The Department of Wildlife and Fisheries has designated certain areas in the coastal waters of the State of Louisiana as Oyster Seed Bed Areas. The exact location of those Seed Bed Areas must be obtained from the Department of Wildlife and Fisheries and any work done under a mineral lease from the State of Louisiana may necessarily be conducted in conformity with the rules and regulations promulgated by the said Department of Wildlife and Fisheries for Oyster Seed Bed Areas.

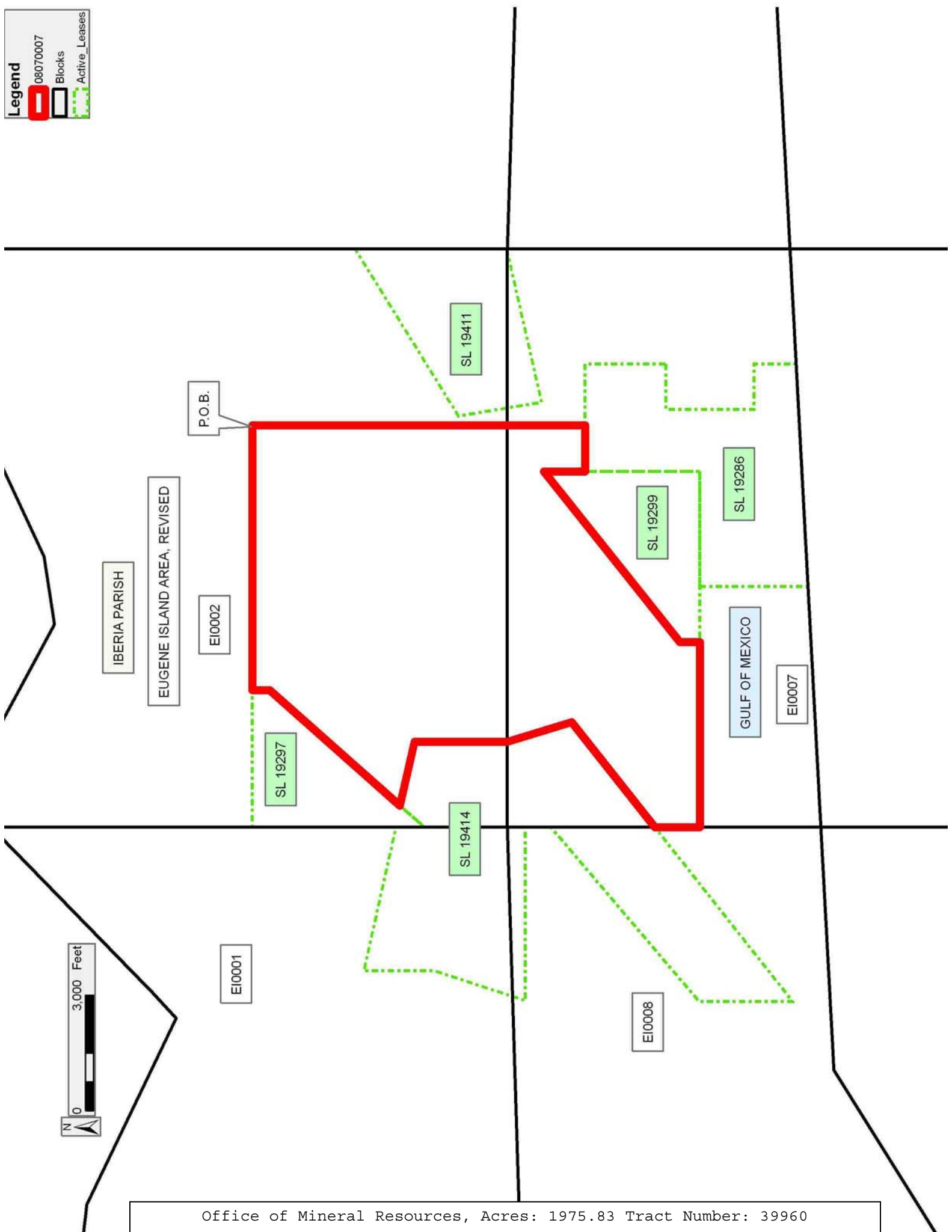
NOTE: All or a portion of this Tract lies within one nautical mile of the boundary of the Russell Sage or Marsh Island Wildlife Refuge and Game Preserve. Any activities connected with this lease conducted within this Tract which may pose potential environmental impacts to the said Wildlife Refuge and Game Preserve should be coordinated with the Louisiana Department of Wildlife and Fisheries.

Applicant: WAINWRIGHT & BOYER LAND SERVICES, L.L.C.

Bidder	Cash Payment	Price/Acre	Rental	Oil	Gas	Other

Legend

- 08070007
- Blocks
- Active_Leases



TRACT 39961 - Portion of Blocks 121, and 122, South Timbalier Area, Revised, Terrebonne Parish, Louisiana

All of the lands now or formerly constituting the beds and bottoms of all water bodies of every nature and description as to which title is vested in the State of Louisiana, together with all islands arising therein and other lands formed by accretion or by reliction, where allowed by law, excepting tax adjudicated lands, and not presently under mineral lease on July 9, 2008, situated in Terrebonne Parish, Louisiana, and more particularly described as follows: Beginning at a point on the North line of Block 121, South Timbalier Area, Revised, also being the Southwest corner of State Lease No. 19478 having Coordinates of X = 2,246,742.54 and Y = 160,462.80; thence East 3,016.50 feet along the South boundary of said State Lease No. 19478 to its Southeast corner, also being the Southwest corner of State Lease No. 2856, as amended, having Coordinates of X = 2,249,759.04 and Y = 160,462.80; thence East 2,752.27 feet along the South boundary of said State Lease No. 2856 to the Northwest corner of State Lease No. 2857, as amended, having Coordinates of X = 2,252,511.31 and Y = 160,462.80; thence along the boundary of said State Lease No. 2857 the following courses: South 06 degrees 13 minutes 17 seconds West 1,119.39 feet to a point having Coordinates of X = 2,252,390.00 and Y = 159,350.00; South 03 degrees 48 minutes 50 seconds East 451.00 feet to a point having Coordinates of X = 2,252,420.00 and Y = 158,900.00; South 08 degrees 44 minutes 46 seconds East 328.82 feet to a point having Coordinates of X = 2,252,470.00 and Y = 158,575.00; South 13 degrees 41 minutes 33 seconds East 1,415.22 feet to a point having Coordinates of X = 2,252,805.00 and Y = 157,200.00; South 17 degrees 42 minutes 12 seconds East 1,857.99 feet to a point having Coordinates of X = 2,253,370.00 and Y = 155,430.00; South 20 degrees 20 minutes 38 seconds East 949.21 feet to a point having Coordinates of X = 2,253,700.00 and Y = 154,540.00 and South 15 degrees 47 minutes 40 seconds East 396.93 feet to a point on the Western boundary of State Lease No. 1249, as amended, having Coordinates of X = 2,253,808.04 and Y = 154,158.06; thence along the boundary of said State Lease No. 1249 the following courses: South 119.64 feet to a point having Coordinates of X = 2,253,808.04 and Y = 154,038.42; East 20.42 feet to a point having Coordinates of X = 2,253,828.46 and Y = 154,038.42 and South 09 degrees 41 minutes 15 seconds East 810.35 feet to a point on the Louisiana Coastline, as decreed by the Supreme Court of the United States, as determined by a Special Master appointed therein, in litigation styled *United States v. State of Louisiana et al No. 9 Original*, in 1975, having Coordinates of X = 2,253,964.83 and Y = 153,239.62; thence along said Louisiana Coastline the following: Northwesterly on a straight line to a point on the West line of Block 122, South Timbalier Area, Revised having Coordinates of X = 2,253,808.04 and Y = 153,444.85; Northwesterly on a straight line to a point having Coordinates of X = 2,253,306 and Y = 154,102 and Southwesterly on a straight line to a point having Coordinates of X = 2,250,512.23 and Y = 153,420.15; thence North 2,564.50 feet to a point having Coordinates of X = 2,250,512.23 and Y = 155,984.65; thence West 2,418.75 feet to a point having Coordinates of X = 2,248,093.48 and Y = 155,984.65; thence North 2,743.69 feet to a point having Coordinates of X

= 2,248,093.48 and Y = 158,728.34; thence West 1,350.94 feet to a point having Coordinates of X = 2,246,742.54 and Y = 158,728.34; thence North 1,734.46 feet to the point of beginning, containing approximately **679.01 acres**, all as more particularly outlined on a plat on file in the Office of Mineral Resources, Department of Natural Resources. All bearings, distances and coordinates are based on Louisiana Coordinate System of 1927, (North or South Zone), where applicable.

NOTE: The above description of the Tract nominated for lease has been provided and corrected, where required, exclusively by the nomination party. Any mineral lease selected from this Tract and awarded by the Louisiana State Mineral Board shall be without warranty of any kind, either express, implied, or statutory, including, but not limited to, the implied warranties of merchantability and fitness for a particular purpose. Should the mineral lease awarded by the Louisiana State Mineral Board be subsequently modified, cancelled or abrogated due to the existence of conflicting leases, operating agreements, private claims or other future obligations or conditions which may affect all or any portion of the leased Tract, it shall not relieve the Lessee of the obligation to pay any bonus due thereon to the Louisiana State Mineral Board, nor shall the Louisiana State Mineral Board be obligated to refund any consideration paid by the Lessor prior to such modification, cancellation, or abrogation, including, but not limited to, bonuses, rentals and royalties.

NOTE: The State of Louisiana does hereby reserve, and this lease shall be subject to, the imprescriptible right of surface use in the nature of a servitude in favor of the Department of Natural Resources, including its Offices and Commissions, for the sole purpose of implementing, constructing, servicing and maintaining approved coastal zone management and/or restoration projects. Utilization of any and all rights derived under this lease by the mineral lessee, its agents, successors or assigns, shall not interfere with nor hinder the reasonable surface use by the Department of Natural Resources, its Offices or Commissions, as herein above reserved.

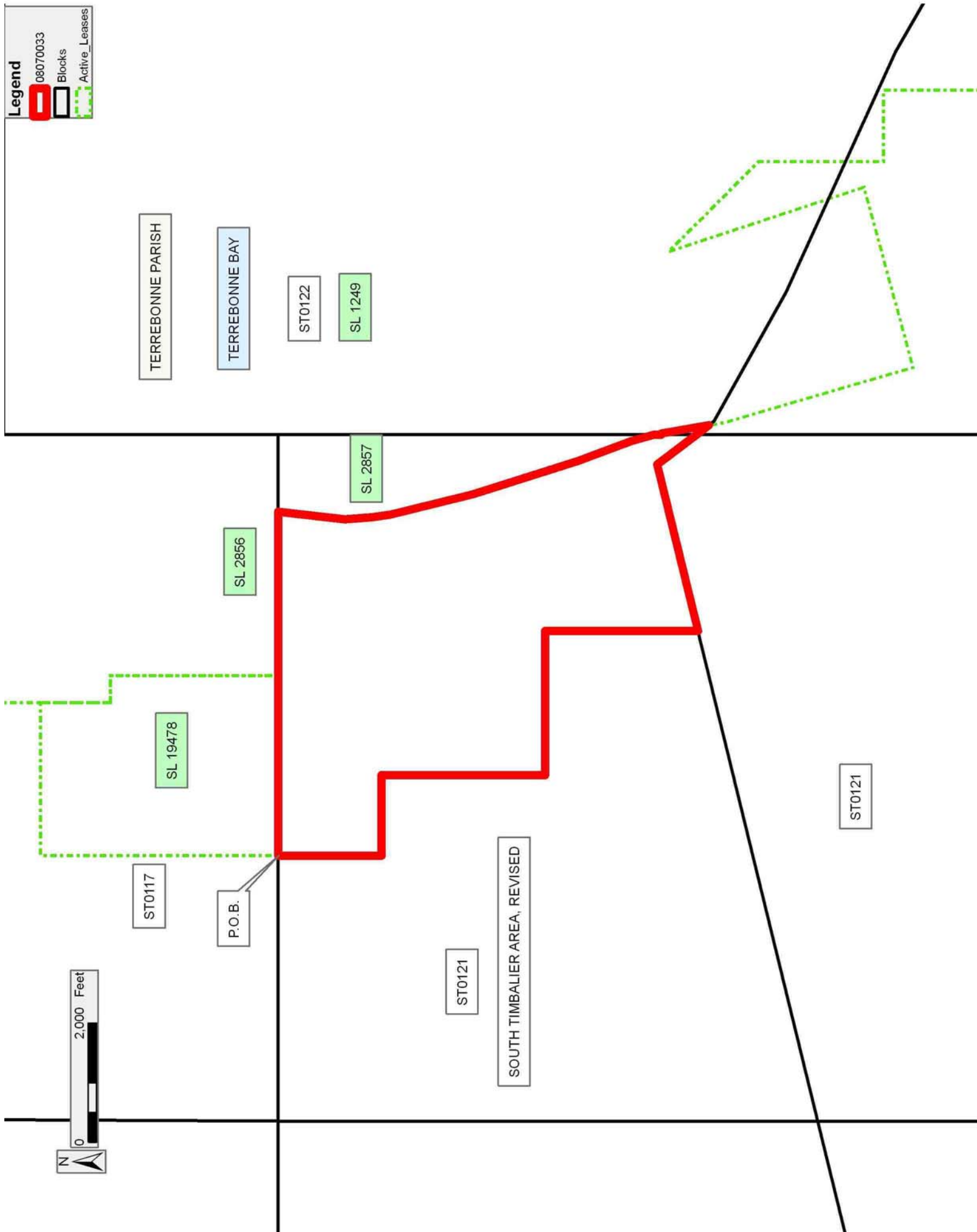
NOTE: It appears, according to our records, that a portion of this Tract is located within the restrictive safety fairway area as set out by the Corps of Engineers, U.S. Army and/or the restrictive anchorage area as set out by the U.S. Coast Guard.

NOTE: The Department of Wildlife and Fisheries has designated certain areas in the coastal waters of the State of Louisiana as Oyster Seed Bed Areas. The exact location of those Seed Bed Areas must be obtained from the Department of Wildlife and Fisheries and any work done under a mineral lease from the State of Louisiana may necessarily be conducted in conformity with the rules and regulations promulgated by the said Department of Wildlife and Fisheries for Oyster Seed Bed Areas.

Applicant: LAND MANAGEMENT SERVICES, L.L.C.

Bidder	Cash Payment	Price/Acre	Rental	Oil	Gas	Other

Legend
08070033
Blocks
Active_Leases



TRACT 39962 - Portion of Block 122, South Timbalier Area, Revised, Terrebonne Parish, Louisiana

All of the lands now or formerly constituting the beds and bottoms of all water bodies of every nature and description as to which title is vested in the State of Louisiana, together with all islands arising therein and other lands formed by accretion or by reliction, where allowed by law, excepting tax adjudicated lands, and not presently under mineral lease on July 9, 2008, situated in Terrebonne Parish, Louisiana, and more particularly described as follows: Beginning at a point on the boundary of State Lease No. 1249, as amended, having Coordinates of X = 2,256,880.21 and Y = 153,910.81; thence along the boundary of said State Lease No. 1249 the following courses: South 45 degrees 00 minutes 00 seconds East 2,129.54 feet to a point having Coordinates of X = 2,258,386.02 and Y = 152,405.00 and South 1,458.02 feet to a point on the Louisiana Coastline, as decreed by the Supreme Court of the United States, as determined by a Special Master appointed therein, in litigation styled *United States v. State of Louisiana et al No. 9 Original*, in 1975, having Coordinates of X = 2,258,386.02 and Y = 150,946.98; thence Northwesterly on a straight line along said Louisiana Coastline to a point on the boundary of said State Lease No. 1249 having Coordinates of X = 2,257,763.82 and Y = 151,230.16; thence North 18 degrees 14 minutes 36 seconds West 2,822.52 feet along the boundary of said State Lease No. 1249 to the point of beginning, containing approximately **41.47 acres**, all as more particularly outlined on a plat on file in the Office of Mineral Resources, Department of Natural Resources. All bearings, distances and coordinates are based on Louisiana Coordinate System of 1927, (North or South Zone), where applicable.

NOTE: The above description of the Tract nominated for lease has been provided and corrected, where required, exclusively by the nomination party. Any mineral lease selected from this Tract and awarded by the Louisiana State Mineral Board shall be without warranty of any kind, either express, implied, or statutory, including, but not limited to, the implied warranties of merchantability and fitness for a particular purpose. Should the mineral lease awarded by the Louisiana State Mineral Board be subsequently modified, cancelled or abrogated due to the existence of conflicting leases, operating agreements, private claims or other future obligations or conditions which may affect all or any portion of the leased Tract, it shall not relieve the Lessee of the obligation to pay any bonus due thereon to the Louisiana State Mineral Board, nor shall the Louisiana State Mineral Board be obligated to refund any consideration paid by the Lessor prior to such modification, cancellation, or abrogation, including, but not limited to, bonuses, rentals and royalties.

NOTE: The State of Louisiana does hereby reserve, and this lease shall be subject to, the imprescriptible right of surface use in the nature of a servitude in favor of the Department of Natural Resources, including its Offices and Commissions, for the sole purpose of implementing, constructing, servicing and maintaining approved coastal zone management and/or restoration projects. Utilization of any and all rights derived




under this lease by the mineral lessee, its agents, successors or assigns, shall not interfere with nor hinder the reasonable surface use by the Department of Natural Resources, its Offices or Commissions, as herein above reserved.

NOTE: The Department of Wildlife and Fisheries has designated certain areas in the coastal waters of the State of Louisiana as Oyster Seed Bed Areas. The exact location of those Seed Bed Areas must be obtained from the Department of Wildlife and Fisheries and any work done under a mineral lease from the State of Louisiana may necessarily be conducted in conformity with the rules and regulations promulgated by the said Department of Wildlife and Fisheries for Oyster Seed Bed Areas.

Applicant: LAND MANAGEMENT SERVICES, L.L.C.

Bidder	Cash Payment	Price/Acre	Rental	Oil	Gas	Other

Legend

-  08070035
-  Blocks
-  Active_Leases

