

TRACT 39939 - Portion of Block 16, Eugene Island Area, Revised, St. Mary Parish, Louisiana

The beds and bottoms of all water bodies belonging to the State of Louisiana located in Block 16, Eugene Island Area, Revised, together with any present lands formed by accretion to the shoreline or islands formed therein, located in St. Mary Parish, Louisiana, owned by and not presently under mineral lease as of July 9, 2008, from the State of Louisiana, the geographical area of which is more fully described as follows: Beginning at the Southeast corner of Block 16, Eugene Island Area, Revised, having Coordinates of X = 1,984,977.84 and Y = 240,895.42; thence West 10,022.16 feet along the South line of said Block 16 to a point having Coordinates of X = 1,974,955.68 and Y = 240,895.42; thence North 6,000.00 feet to a point having Coordinates of X = 1,974,955.68 and Y = 246,895.42; thence West 5,000.00 feet to a point on the West line of said Block 16 having Coordinates of X = 1,969,955.68 and Y = 246,895.42; thence North approximately 3,227 feet along the West line of said Block 16 to a point of intersection with the Southern boundary of the Atchafalaya Delta Wildlife Management Area having a Coordinate of X = 1,969,955.68; thence Southeasterly on a straight line along the Southern boundary of said Atchafalaya Delta Wildlife Management Area to a point of intersection with the East line of said Block 16 having a Coordinate of X = 1,984,977.00; thence South approximately 3,982 feet to the point of beginning, containing approximately **1,589 acres**, all as more particularly outlined on a plat on file in the Office of Mineral Resources, Department of Natural Resources. All bearings, distances and coordinates are based on Louisiana Coordinate System of 1927, (North or South Zone).

NOTE: The above description of the Tract nominated for lease has been provided and corrected, where required, exclusively by the nomination party. Any mineral lease selected from this Tract and awarded by the Louisiana State Mineral Board shall be without warranty of any kind, either express, implied, or statutory, including, but not limited to, the implied warranties of merchantability and fitness for a particular purpose. Should the mineral lease awarded by the Louisiana State Mineral Board be subsequently modified, cancelled or abrogated due to the existence of conflicting leases, operating agreements, private claims or other future obligations or conditions which may affect all or any portion of the leased Tract, it shall not relieve the Lessee of the obligation to pay any bonus due thereon to the Louisiana State Mineral Board, nor shall the Louisiana State Mineral Board be obligated to refund any consideration paid by the Lessor prior to such modification, cancellation, or abrogation, including, but not limited to, bonuses, rentals and royalties.

NOTE: The above described tract may be in the vicinity of existing shell reefs where drilling and dredging operations must be conducted in strict conformity with the regulations adopted by the Louisiana Department of Wildlife and Fisheries and/or the U.S. Corps of Engineers, U.S. Army.

NOTE: The State of Louisiana does hereby reserve, and this lease shall be subject to, the imprescriptible right of surface use in the nature of a servitude in favor of the Department of Natural Resources, including its Offices and Commissions, for the sole purpose of implementing, constructing, servicing and maintaining approved coastal zone management and/or restoration projects. Utilization of any and all rights derived under this lease by the mineral lessee, its agents, successors or assigns, shall not interfere with nor hinder the reasonable surface use by the Department of Natural Resources, its Offices or Commissions, as herein above reserved.




NOTE: It appears, according to our records, that a portion of this Tract is located within the restrictive safety fairway area as set out by the Corps of Engineers, U.S. Army and/or the restrictive anchorage area as set out by the U.S. Coast Guard.

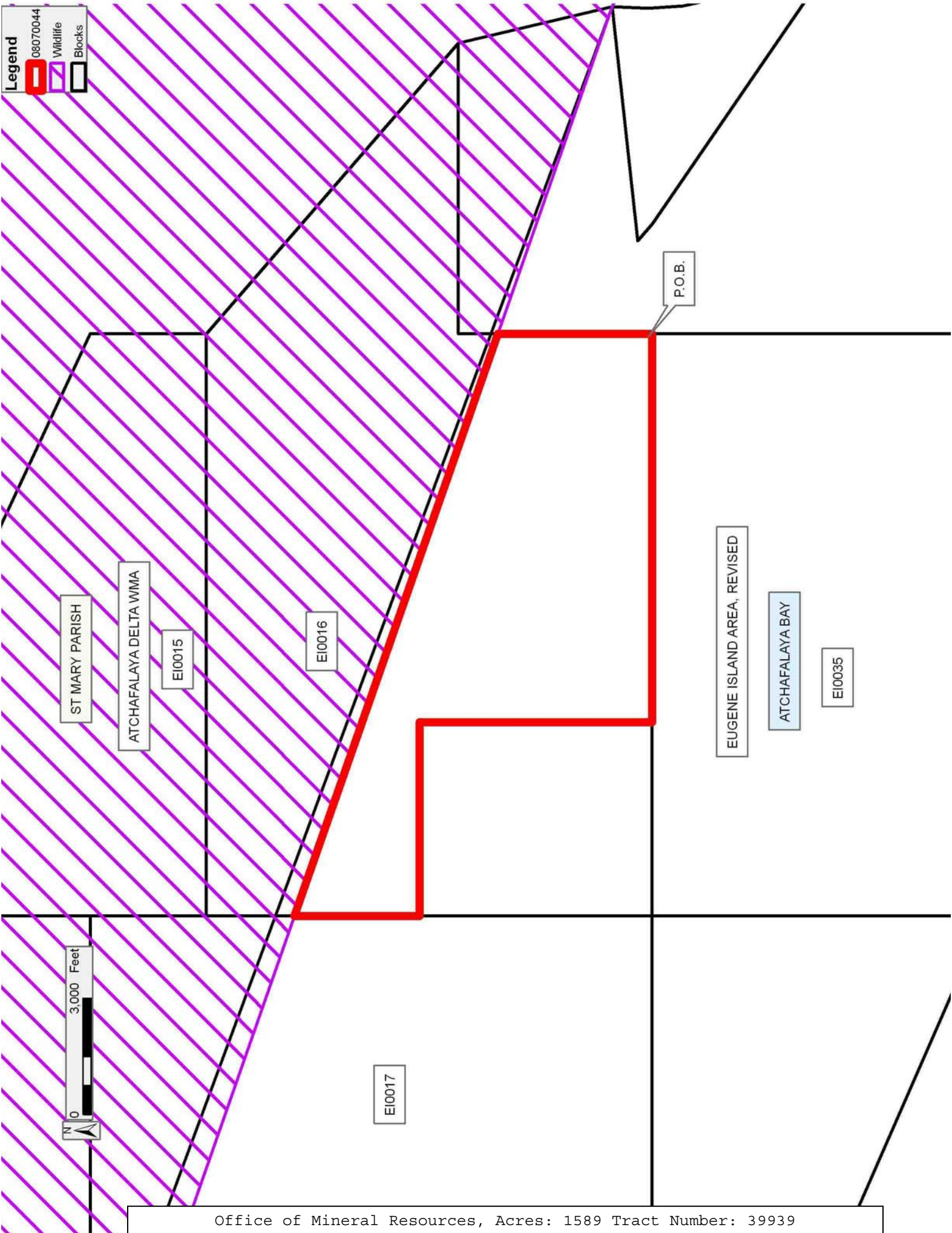
NOTE: The Department of Wildlife and Fisheries has designated certain areas in the coastal waters of the State of Louisiana as Oyster Seed Bed Areas. The exact location of those Seed Bed Areas must be obtained from the Department of Wildlife and Fisheries and any work done under a mineral lease from the State of Louisiana may necessarily be conducted in conformity with the rules and regulations promulgated by the said Department of Wildlife and Fisheries for Oyster Seed Bed Areas.

Applicant: TRINITY ENERGY SERVICES, LLC

Bidder	Cash Payment	Price/Acre	Rental	Oil	Gas	Other

Legend

-  08070044
-  Wildlife
-  Blocks



TRACT 39940 - Portion of Blocks 17, and 18, Eugene Island Area, Revised, St. Mary Parish, Louisiana

The beds and bottoms of all water bodies belonging to the State of Louisiana located in Blocks 17, and 18, Eugene Island Area, Revised, together with any present lands formed by accretion to the shoreline or islands formed therein, located in St. Mary Parish, Louisiana, owned by and not presently under mineral lease as of July 9, 2008, from the State of Louisiana, the geographical area of which is more fully described as follows: Beginning at a point within Block 18, Eugene Island Area, Revised, also being an interior corner of State Lease No. 17121 having Coordinates of X = 1,954,148.52 and Y = 247,395.42; thence East 785.00 feet to a point on the West boundary of State Lease No. 18501 having Coordinates of X = 1,954,933.52 and Y = 247,395.42; thence along the boundary of said State Lease No. 18501 the following courses: South 1,200.01 feet and South 35 degrees 02 minutes 33 seconds East 1,885.38 feet to its Northernmost Southwest corner and the Northernmost Northwest corner of State Lease No. 18697 having Coordinates of X = 1,956,016.07 and Y = 244,651.80; thence along the boundary of said State Lease No. 18697 the following courses: South 43 degrees 34 minutes 46 seconds West 700.00 feet, West 600.00 feet and South 955.91 feet to the Northeast corner of State Lease No. 18696 having Coordinates of X = 1,954,933.52 and Y = 243,188.80; thence West 4,026.69 feet along the Northern boundary of said State Lease No. 18696 to its Northwest corner having Coordinates of X = 1,950,906.83 and Y = 243,188.80; thence West 126.83 feet to the Southernmost corner of said State Lease No. 17121 having Coordinates of X = 1,950,780.00 and Y = 243,188.80; thence along the boundary of said State Lease No. 17121 the following courses: North 2,456.62 feet, East 1,603.52 feet, North 400.00 feet, East 1,130.00 feet, North 620.00 feet, East 635.00 feet and North 730.00 feet to the point of beginning, containing approximately **320.00 acres**, all as more particularly outlined on a plat on file in the Office of Mineral Resources, Department of Natural Resources. All bearings, distances and coordinates are based on Louisiana Coordinate System of 1927, (North or South Zone).

NOTE: The above description of the Tract nominated for lease has been provided and corrected, where required, exclusively by the nomination party. Any mineral lease selected from this Tract and awarded by the Louisiana State Mineral Board shall be without warranty of any kind, either express, implied, or statutory, including, but not limited to, the implied warranties of merchantability and fitness for a particular purpose. Should the mineral lease awarded by the Louisiana State Mineral Board be subsequently modified, cancelled or abrogated due to the existence of conflicting leases, operating agreements, private claims or other future obligations or conditions which may affect all or any portion of the leased Tract, it shall not relieve the Lessee of the obligation to pay any bonus due thereon to the Louisiana State Mineral Board, nor shall the Louisiana State Mineral Board be obligated to refund any consideration paid by the Lessor prior to such modification, cancellation, or abrogation, including, but not limited to, bonuses, rentals and royalties.

NOTE: The above described tract may be in the vicinity of existing shell reefs where drilling and dredging operations must be conducted in strict conformity with the regulations adopted by the Louisiana Department of Wildlife and Fisheries and/or the U.S. Corps of Engineers, U.S. Army.

NOTE: The State of Louisiana does hereby reserve, and this lease shall be subject to, the imprescriptible right of surface use in the nature of a servitude in favor of the Department of Natural Resources, including its Offices and Commissions, for the sole purpose of implementing, constructing, servicing and maintaining approved coastal zone management and/or restoration projects. Utilization of any and all rights derived under this lease by the mineral lessee, its agents, successors or assigns, shall not interfere with nor hinder the reasonable surface use by the Department of Natural Resources, its Offices or Commissions, as herein above reserved.

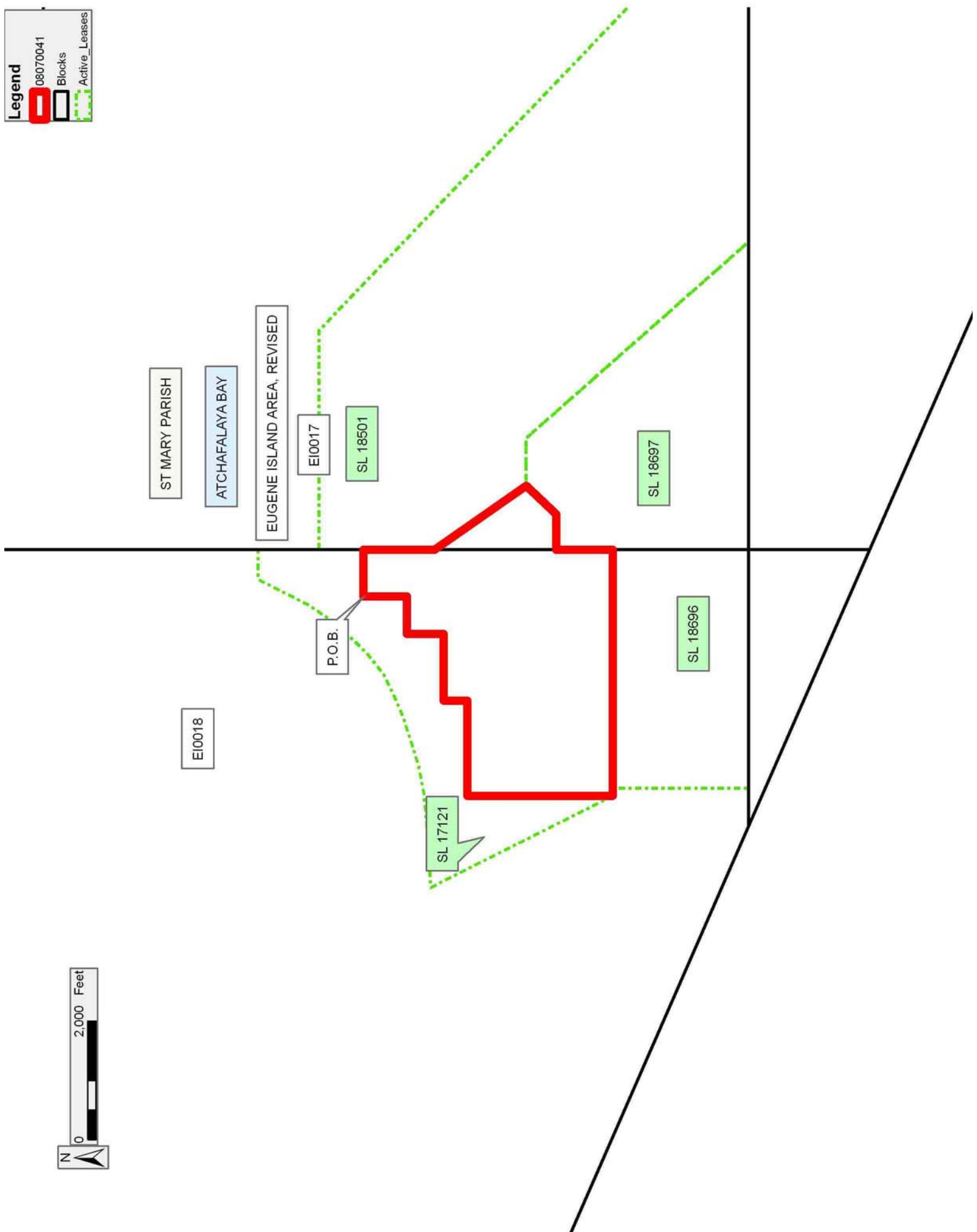
NOTE: The Department of Wildlife and Fisheries has designated certain areas in the coastal waters of the State of Louisiana as Oyster Seed Bed Areas. The exact location of those Seed Bed Areas must be obtained from the Department of Wildlife and Fisheries and any work done under a mineral lease from the State of Louisiana may necessarily be conducted in conformity with the rules and regulations promulgated by the said Department of Wildlife and Fisheries for Oyster Seed Bed Areas.

Applicant: TRINITY ENERGY SERVICES, LLC

Bidder	Cash Payment	Price/Acre	Rental	Oil	Gas	Other

Legend

- 08070041
- Blocks
- Active_Leases



TRACT 39941 - Portion of Block 34, Eugene Island Area, Revised, St. Mary Parish, Louisiana

The beds and bottoms of all water bodies belonging to the State of Louisiana located in Block 34, Eugene Island Area, Revised, together with any present lands formed by accretion to the shoreline or islands formed therein, located in St. Mary Parish, Louisiana, owned by and not presently under mineral lease as of July 9, 2008, from the State of Louisiana, the geographical area of which is more fully described as follows: Beginning at a point on the North line of Block 34, Eugene Island Area, Revised, having Coordinates of X = 1,958,095.00 and Y = 240,895.42; thence East 11,860.68 feet along the North line of said Block 34 to its Northeast corner having Coordinates of X = 1,969,955.68 and Y = 240,895.42; thence South 8,610.59 feet along the East line of said Block 34 to a point on the Three Mile Line, as decreed by the Supreme Court of the United States, as determined by a Special Master appointed therein, in litigation styled *United States v. State of Louisiana et al No. 9 Original*, in 1975, having Coordinates of X = 1,969,955.68 and Y = 232,284.83; thence Northwesterly on a straight line to a point having Coordinates of X = 1,958,095.00 and Y = 237,472.86; thence North 3,422.56 feet to the point of beginning, containing approximately **1,638.22 acres, LESS AND EXCEPT** that portion thereof, if any, lying seaward of the line three nautical miles from the coast line of Louisiana, as said three mile line has been decreed by the Supreme Court of the United States, as determined by a Special Master appointed therein, in litigation styled **United States v. State of Louisiana et al No. 9 Original**, in 1975, all as more particularly outlined on a plat in the Office of Mineral Resources, Department of Natural Resources. All bearings, distances and coordinates are based on the Louisiana Coordinate System of 1927, (South Zone).

NOTE: The above description of the Tract nominated for lease has been provided and corrected, where required, exclusively by the nomination party. Any mineral lease selected from this Tract and awarded by the Louisiana State Mineral Board shall be without warranty of any kind, either express, implied, or statutory, including, but not limited to, the implied warranties of merchantability and fitness for a particular purpose. Should the mineral lease awarded by the Louisiana State Mineral Board be subsequently modified, cancelled or abrogated due to the existence of conflicting leases, operating agreements, private claims or other future obligations or conditions which may affect all or any portion of the leased Tract, it shall not relieve the Lessee of the obligation to pay any bonus due thereon to the Louisiana State Mineral Board, nor shall the Louisiana State Mineral Board be obligated to refund any consideration paid by the Lessor prior to such modification, cancellation, or abrogation, including, but not limited to, bonuses, rentals and royalties.

NOTE: The above described tract may be in the vicinity of existing shell reefs where drilling and dredging operations must be conducted in strict conformity with the regulations adopted by the Louisiana Department of Wildlife and Fisheries and/or the U.S. Corps of Engineers, U.S. Army.

NOTE: The State of Louisiana does hereby reserve, and this lease shall be subject to, the imprescriptible right of surface use in the nature of a servitude in favor of the Department of Natural Resources, including its Offices and Commissions, for the sole purpose of implementing, constructing, servicing and maintaining approved coastal zone management and/or restoration projects. Utilization of any and all rights derived under this lease by the mineral lessee, its agents, successors or assigns, shall not interfere with nor hinder the reasonable surface use by the Department of Natural Resources, its Offices or Commissions, as herein above reserved.

NOTE: It appears, according to our records, that a portion of this Tract is located within the restrictive safety fairway area as set out by the Corps of Engineers, U.S. Army and/or the restrictive anchorage area as set out by the U.S. Coast Guard.

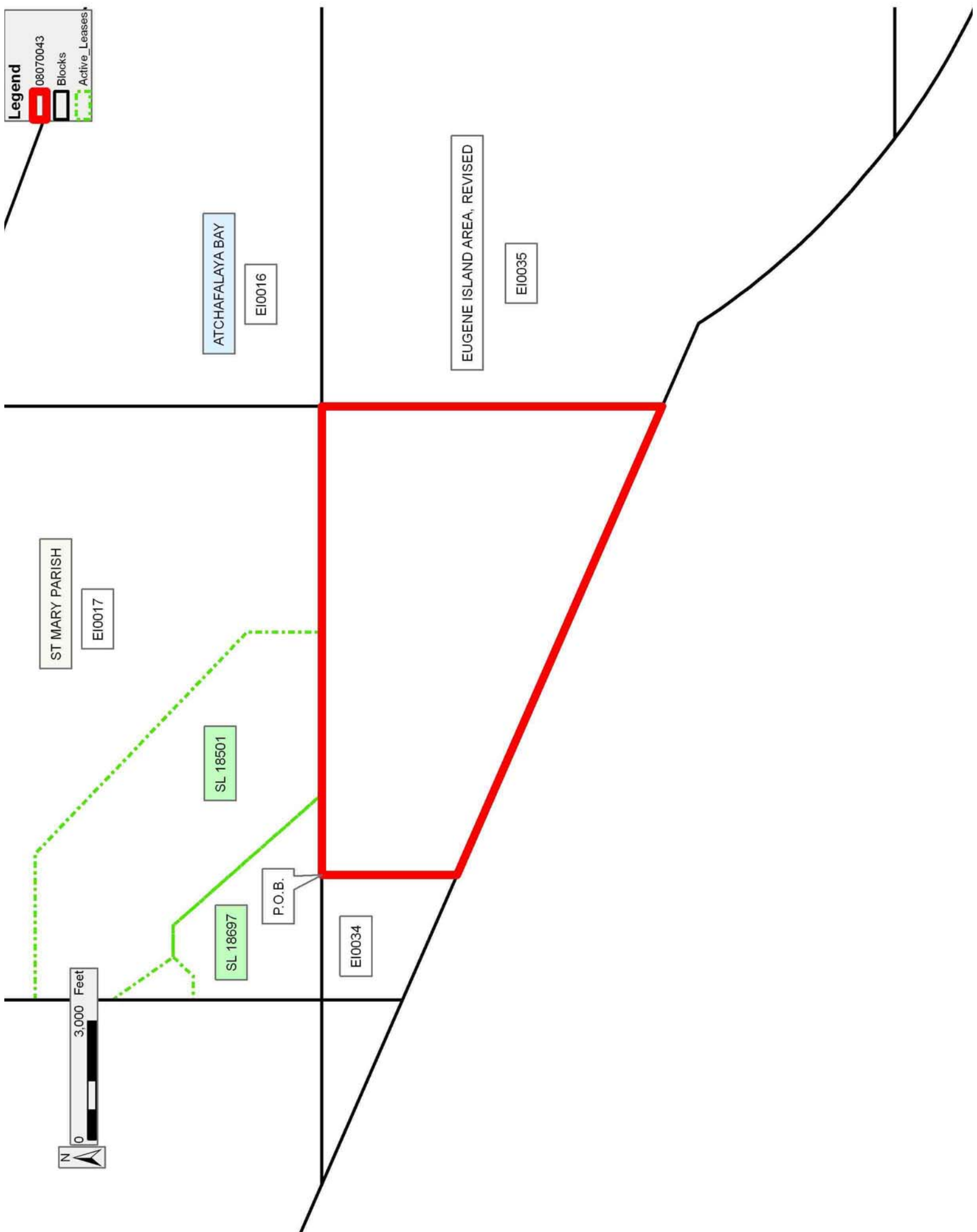
NOTE: The Department of Wildlife and Fisheries has designated certain areas in the coastal waters of the State of Louisiana as Oyster Seed Bed Areas. The exact location of those Seed Bed Areas must be obtained from the Department of Wildlife and Fisheries and any work done under a mineral lease from the State of Louisiana may necessarily be conducted in conformity with the rules and regulations promulgated by the said Department of Wildlife and Fisheries for Oyster Seed Bed Areas.

Applicant: TRINITY ENERGY SERVICES, LLC

Bidder	Cash Payment	Price/Acre	Rental	Oil	Gas	Other

Legend

- 08070043
- Blocks
- Active_Leases



ST MARY PARISH
E10017

ATCHAFALAYA BAY
E10016

EUGENE ISLAND AREA, REVISED
E10035

SL 18501

SL 18697

P.O.B.

E10034



TRACT 39942 - Portion of Block 35, Eugene Island Area, Revised, St. Mary Parish, Louisiana

The beds and bottoms of all water bodies belonging to the State of Louisiana located in Block 35, Eugene Island Area, Revised, together with any present lands formed by accretion to the shoreline or islands formed therein, located in St. Mary Parish, Louisiana, owned by and not presently under mineral lease as of July 9, 2008, from the State of Louisiana, the geographical area of which is more fully described as follows: Beginning at the Northwest corner of Block 35, Eugene Island Area, Revised, having Coordinates of X = 1,969,955.68 and Y = 240,895.42; thence East 7,511.08 feet along the North line of said Block 35 to a point having Coordinates of X = 1,977,466.76 and Y = 240,895.42; thence South 14,498.58 feet to a point on the South line of said Block 35 having Coordinates of X = 1,977,466.76 and Y = 226,396.84; thence West 721.63 feet along the South line of said Block 35 to a point on the Three Mile Line, as decreed by the Supreme Court of the United States, as determined by a Special Master appointed therein, in litigation styled *United States v. State of Louisiana et al No. 9 Original*, in 1975, having Coordinates of X = 1,976,745.13 and Y = 226,396.84; thence Northwesterly on an arc to the right with a radius of 18,240.60 feet and a center at X = 1,987,818 and Y = 240,892 to a point having Coordinates of X = 1,975,782 and Y = 227,186; thence Northwesterly on an arc to the right with a radius of 18,240.60 feet and a center at X = 1,987,371 and Y = 241,272 to a point having Coordinates of X = 1,972,054 and Y = 231,367; thence Northwesterly on a straight line to a point on the West line of said Block 35 having Coordinates of X = 1,969,955.68 and Y = 232,284.83; thence North 8,610.59 feet along the West line of said Block 35 to the point of beginning, containing approximately **2,002.07 acres, LESS AND EXCEPT** that portion thereof, if any, lying seaward of the line three nautical miles from the coast line of Louisiana, as said three mile line has been decreed by the Supreme Court of the United States, as determined by a Special Master appointed therein, in litigation styled **United States v. State of Louisiana et al No. 9 Original**, in 1975, all as more particularly outlined on a plat in the Office of Mineral Resources, Department of Natural Resources. All bearings, distances and coordinates are based on the Louisiana Coordinate System of 1927, (South Zone).

NOTE: The above description of the Tract nominated for lease has been provided and corrected, where required, exclusively by the nomination party. Any mineral lease selected from this Tract and awarded by the Louisiana State Mineral Board shall be without warranty of any kind, either express, implied, or statutory, including, but not limited to, the implied warranties of merchantability and fitness for a particular purpose. Should the mineral lease awarded by the Louisiana State Mineral Board be subsequently modified, cancelled or abrogated due to the existence of conflicting leases, operating agreements, private claims or other future obligations or conditions which may affect all or any portion of the leased Tract, it shall not relieve the Lessee of the obligation to pay any bonus due thereon to the Louisiana State Mineral Board, nor shall

the Louisiana State Mineral Board be obligated to refund any consideration paid by the Lessor prior to such modification, cancellation, or abrogation, including, but not limited to, bonuses, rentals and royalties.

NOTE: The above described tract may be in the vicinity of existing shell reefs where drilling and dredging operations must be conducted in strict conformity with the regulations adopted by the Louisiana Department of Wildlife and Fisheries and/or the U.S. Corps of Engineers, U.S. Army.

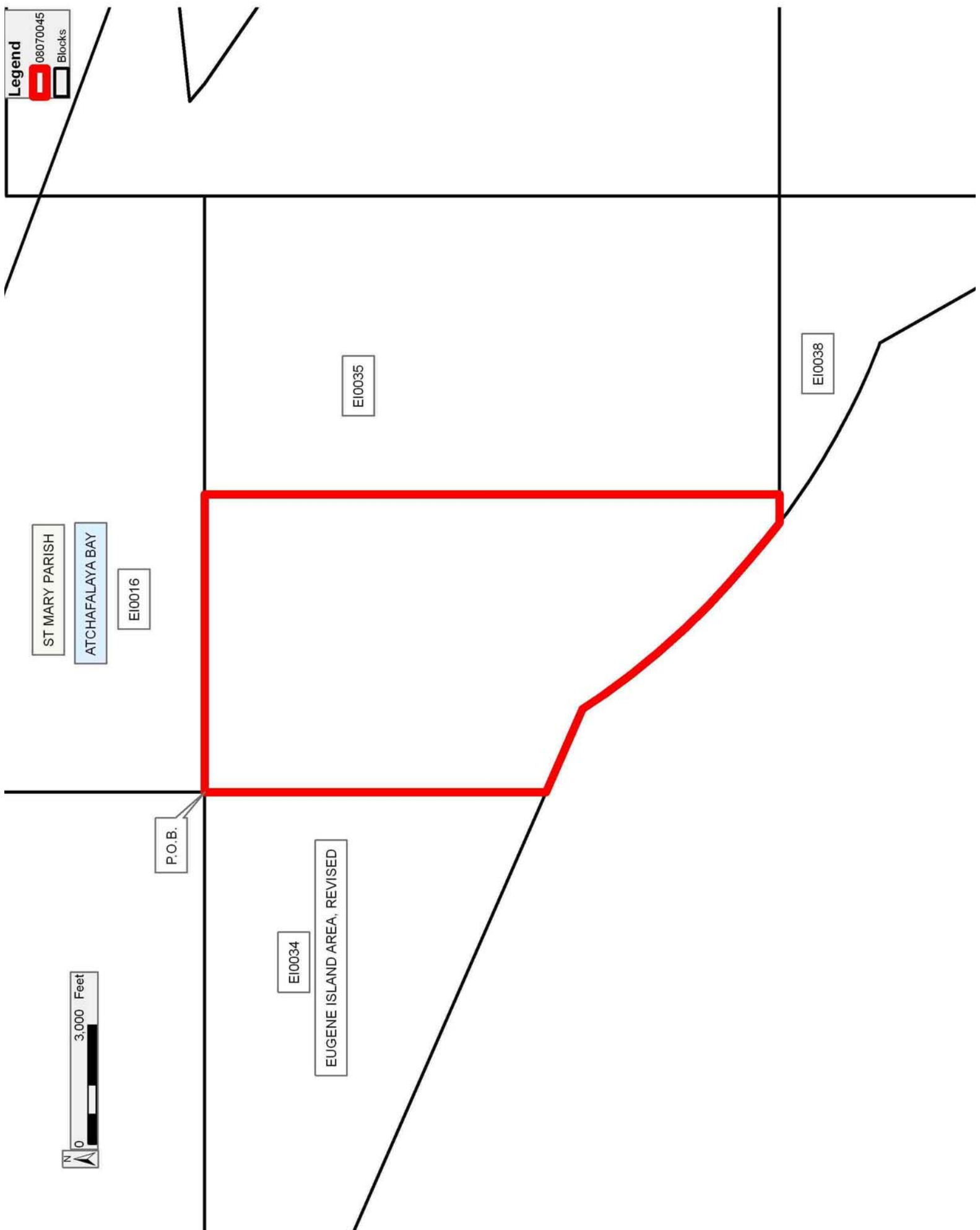
NOTE: The State of Louisiana does hereby reserve, and this lease shall be subject to, the imprescriptible right of surface use in the nature of a servitude in favor of the Department of Natural Resources, including its Offices and Commissions, for the sole purpose of implementing, constructing, servicing and maintaining approved coastal zone management and/or restoration projects. Utilization of any and all rights derived under this lease by the mineral lessee, its agents, successors or assigns, shall not interfere with nor hinder the reasonable surface use by the Department of Natural Resources, its Offices or Commissions, as herein above reserved.

NOTE: It appears, according to our records, that a portion of this Tract is located within the restrictive safety fairway area as set out by the Corps of Engineers, U.S. Army and/or the restrictive anchorage area as set out by the U.S. Coast Guard.

NOTE: The Department of Wildlife and Fisheries has designated certain areas in the coastal waters of the State of Louisiana as Oyster Seed Bed Areas. The exact location of those Seed Bed Areas must be obtained from the Department of Wildlife and Fisheries and any work done under a mineral lease from the State of Louisiana may necessarily be conducted in conformity with the rules and regulations promulgated by the said Department of Wildlife and Fisheries for Oyster Seed Bed Areas.

Applicant: TRINITY ENERGY SERVICES, LLC

Bidder	Cash Payment	Price/Acre	Rental	Oil	Gas	Other



Legend



TRACT 39943 - Portion of Block 35, Eugene Island Area, Revised, St. Mary Parish, Louisiana

The beds and bottoms of all water bodies belonging to the State of Louisiana located in Block 35, Eugene Island Area, Revised, together with any present lands formed by accretion to the shoreline or islands formed therein, located in St. Mary Parish, Louisiana, owned by and not presently under mineral lease as of July 9, 2008, from the State of Louisiana, the geographical area of which is more fully described as follows: Beginning at a point on the North line of Block 35, Eugene Island Area, Revised, having Coordinates of X = 1,977,466.76 and Y = 240,895.42; thence East 7,511.08 feet along the North line of said Block 35 to its Northeast corner having Coordinates of X = 1,984,977.84 and Y = 240,895.42; thence South 14,498.58 feet along the East line of said Block 35 to its Southeast corner having Coordinates of X = 1,984,977.84 and Y = 226,396.84; thence West 7,511.08 feet along the South line of said Block 35 to a point having Coordinates of X = 1,977,466.76 and Y = 226,396.84; thence North 14,498.58 feet to the point of beginning, containing approximately **2,500.00 acres, LESS AND EXCEPT** that portion thereof, if any, lying seaward of the line three nautical miles from the coast line of Louisiana, as said three mile line has been decreed by the Supreme Court of the United States, as determined by a Special Master appointed therein, in litigation styled **United States v. State of Louisiana et al No. 9 Original**, in 1975, all as more particularly outlined on a plat in the Office of Mineral Resources, Department of Natural Resources. All bearings, distances and coordinates are based on the Louisiana Coordinate System of 1927, (South Zone).

NOTE: The above description of the Tract nominated for lease has been provided and corrected, where required, exclusively by the nomination party. Any mineral lease selected from this Tract and awarded by the Louisiana State Mineral Board shall be without warranty of any kind, either express, implied, or statutory, including, but not limited to, the implied warranties of merchantability and fitness for a particular purpose. Should the mineral lease awarded by the Louisiana State Mineral Board be subsequently modified, cancelled or abrogated due to the existence of conflicting leases, operating agreements, private claims or other future obligations or conditions which may affect all or any portion of the leased Tract, it shall not relieve the Lessee of the obligation to pay any bonus due thereon to the Louisiana State Mineral Board, nor shall the Louisiana State Mineral Board be obligated to refund any consideration paid by the Lessor prior to such modification, cancellation, or abrogation, including, but not limited to, bonuses, rentals and royalties.

NOTE: The above described tract may be in the vicinity of existing shell reefs where drilling and dredging operations must be conducted in strict conformity with the regulations adopted by the Louisiana Department of Wildlife and Fisheries and/or the U.S. Corps of Engineers, U.S. Army.

NOTE: The State of Louisiana does hereby reserve, and this lease shall be subject to, the imprescriptible right of surface use in the nature of a

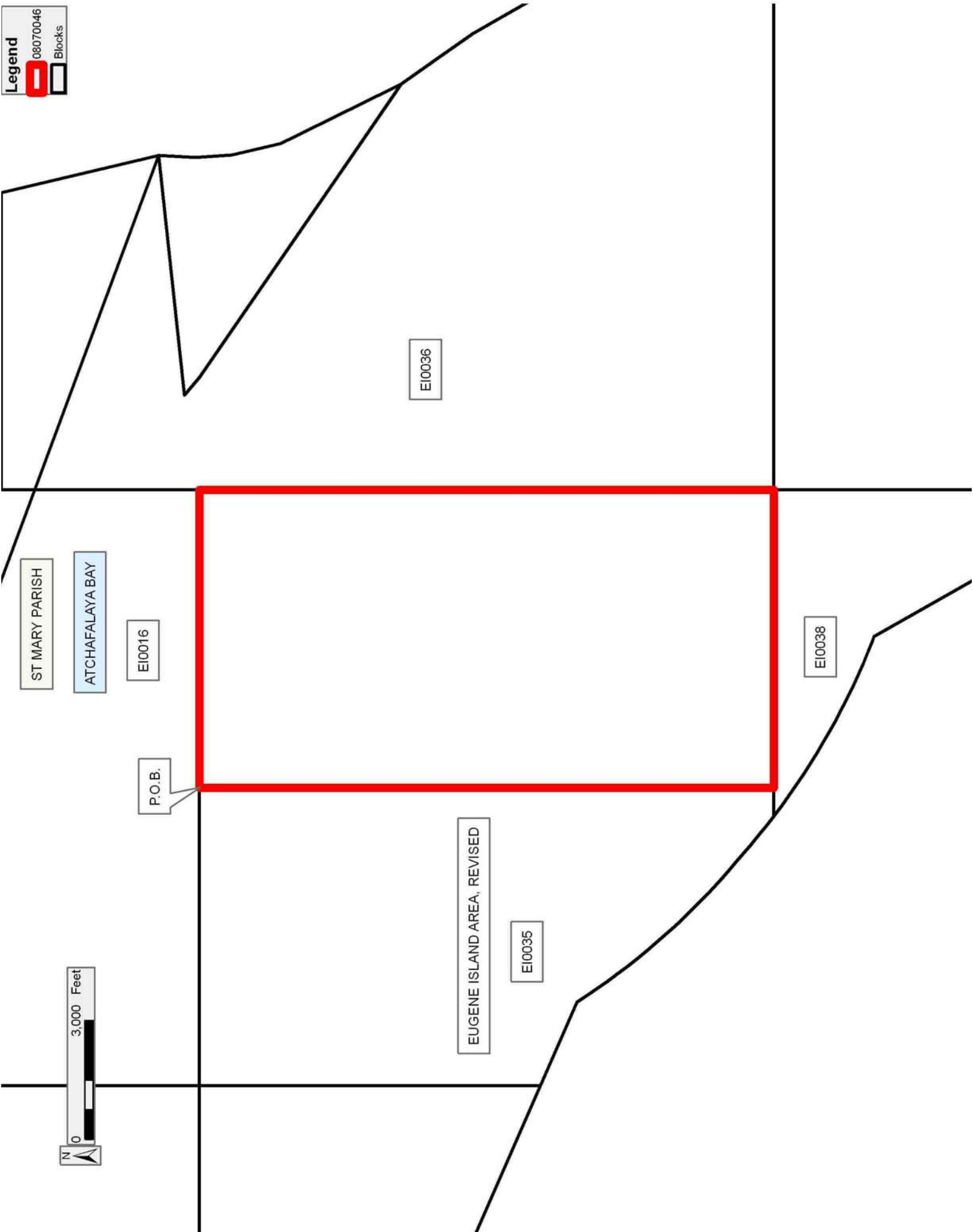
servitude in favor of the Department of Natural Resources, including its Offices and Commissions, for the sole purpose of implementing, constructing, servicing and maintaining approved coastal zone management and/or restoration projects. Utilization of any and all rights derived under this lease by the mineral lessee, its agents, successors or assigns, shall not interfere with nor hinder the reasonable surface use by the Department of Natural Resources, its Offices or Commissions, as herein above reserved.

NOTE: The Department of Wildlife and Fisheries has designated certain areas in the coastal waters of the State of Louisiana as Oyster Seed Bed Areas. The exact location of those Seed Bed Areas must be obtained from the Department of Wildlife and Fisheries and any work done under a mineral lease from the State of Louisiana may necessarily be conducted in conformity with the rules and regulations promulgated by the said Department of Wildlife and Fisheries for Oyster Seed Bed Areas.

Applicant: TRINITY ENERGY SERVICES, LLC

Bidder	Cash Payment	Price/Acre	Rental	Oil	Gas	Other

Legend
08070046
Blocks



TRACT 39944 - Portion of Blocks 121, and 122, South Timbalier Area, Revised, Terrebonne Parish, Louisiana

The beds and bottoms of all water bodies belonging to the State of Louisiana located in Blocks 121, and 122, South Timbalier Area, Revised, together with any present lands formed by accretion to the shoreline or islands formed therein, located in Terrebonne Parish, Louisiana, owned by and not presently under mineral lease as of July 9, 2008, from the State of Louisiana, the geographical area of which is more fully described as follows: Beginning at a point within Block 122, South Timbalier Area, Revised, being located on the Western boundary of State Lease No. 1249, as amended, having Coordinates of X = 2,254,935.16 and Y = 149,809.46; thence South 1,784.46 feet to a point having Coordinates of X = 2,254,935.16 and Y = 148,025.00; thence East 192.88 feet to a point having Coordinates of X = 2,255,128.04 and Y = 148,025.00; thence South 3,831.47 feet to a point on the Southwestern boundary of said State Lease No. 1249 having Coordinates of X = 2,255,128.04 and Y = 144,193.53; thence along the boundary of said State Lease No. 1249 the following courses: South 1,485.00 feet to a point having Coordinates of X = 2,255,128.04 and Y = 142,708.52; West 1,320.00 feet to a point having Coordinates of X = 2,253,808.04 and Y = 142,708.53 and South 1,155.00 feet to a point on the Northern boundary of State Lease No. 2986, as amended, having Coordinates of X = 2,253,808.04 and Y = 141,553.53; thence West 3,295.81 feet along the Northern boundary of said State Lease No. 2986 to its Northwest corner having Coordinates of X = 2,250,512.23 and Y = 141,553.53; thence North 11,866.62 feet to a point on the Louisiana Coastline, as decreed by the Supreme Court of the United States, as determined by a Special Master appointed therein, in litigation styled *United States v. State of Louisiana et al No. 9 Original*, in 1975, having Coordinates of X = 2,250,512.23 and Y = 153,420.15; thence along said Louisiana Coastline the following: Northeasterly on a straight line to a point having Coordinates of X = 2,253,306 and Y = 154,102; Southeasterly on a straight line to a point on the East line of Block 121, South Timbalier Area, Revised, having Coordinates of X = 2,253,808.04 and Y = 153,444.85 and Southeasterly on a straight line to a point on the Western boundary of said State Lease No. 1249 having Coordinates of X = 2,253,964.83 and Y = 153,239.62; thence along the boundary of said State Lease No. 1249 the following courses: South 09 degrees 41 minutes 15 seconds East 268.45 feet to a point having Coordinates of X = 2,254,010.00 and Y = 152,975.00 and South 16 degrees 17 minutes 29 seconds East 3,297.96 feet to the point of beginning, containing approximately **1,180.81 acres**, all as more particularly outlined on a plat on file in the Office of Mineral Resources, Department of Natural Resources. All bearings, distances and coordinates are based on Louisiana Coordinate System of 1927, (North or South Zone).

NOTE: The above description of the Tract nominated for lease has been provided and corrected, where required, exclusively by the nomination party. Any mineral lease selected from this Tract and awarded by the Louisiana State Mineral Board shall be without warranty of any kind, either express, implied, or statutory, including, but not limited to, the

implied warranties of merchantability and fitness for a particular purpose. Should the mineral lease awarded by the Louisiana State Mineral Board be subsequently modified, cancelled or abrogated due to the existence of conflicting leases, operating agreements, private claims or other future obligations or conditions which may affect all or any portion of the leased Tract, it shall not relieve the Lessee of the obligation to pay any bonus due thereon to the Louisiana State Mineral Board, nor shall the Louisiana State Mineral Board be obligated to refund any consideration paid by the Lessor prior to such modification, cancellation, or abrogation, including, but not limited to, bonuses, rentals and royalties.

NOTE: The State of Louisiana does hereby reserve, and this lease shall be subject to, the imprescriptible right of surface use in the nature of a servitude in favor of the Department of Natural Resources, including its Offices and Commissions, for the sole purpose of implementing, constructing, servicing and maintaining approved coastal zone management and/or restoration projects. Utilization of any and all rights derived under this lease by the mineral lessee, its agents, successors or assigns, shall not interfere with nor hinder the reasonable surface use by the Department of Natural Resources, its Offices or Commissions, as herein above reserved.

NOTE: It appears, according to our records, that a portion of this Tract is located within the restrictive safety fairway area as set out by the Corps of Engineers, U.S. Army and/or the restrictive anchorage area as set out by the U.S. Coast Guard.

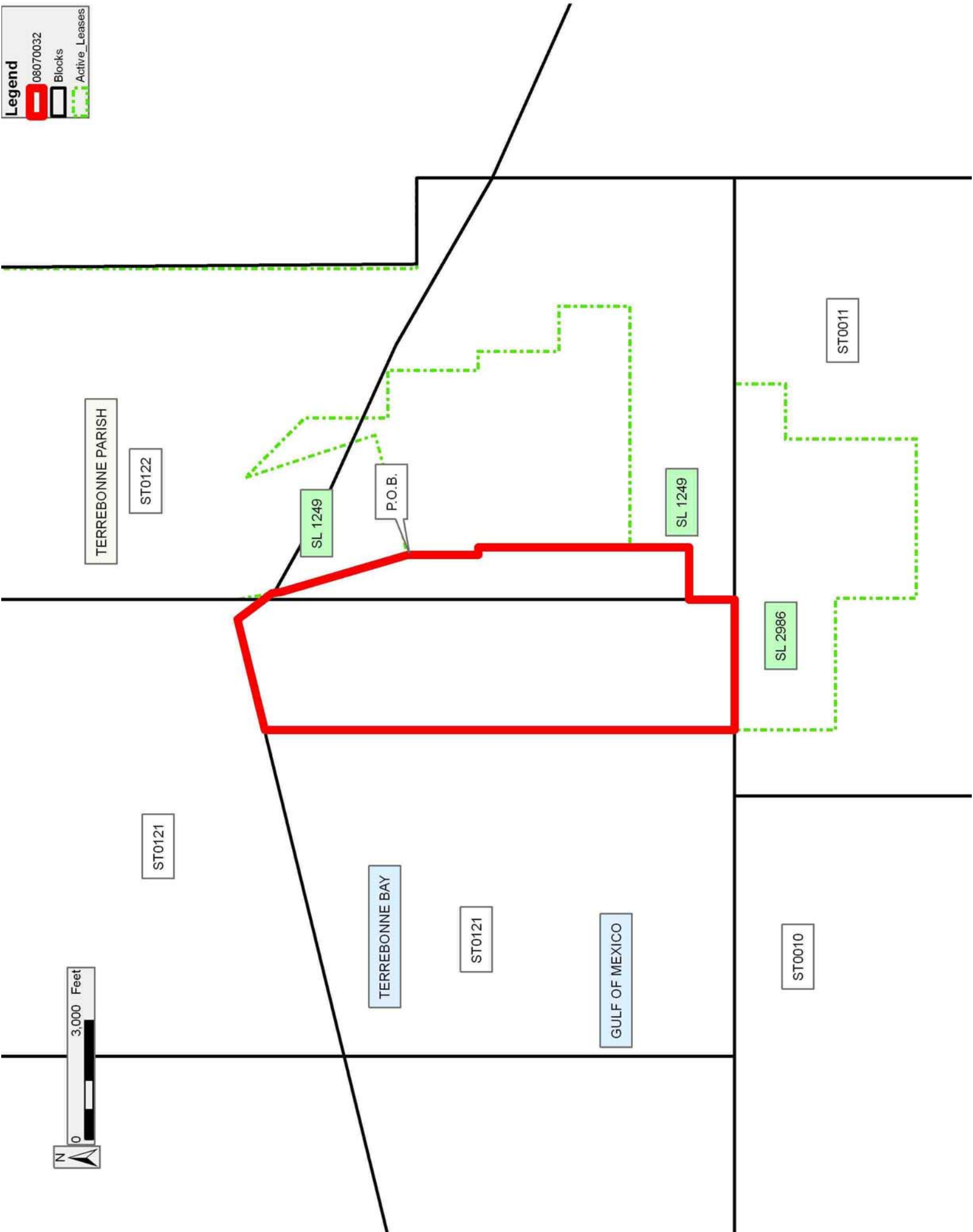
NOTE: The Department of Wildlife and Fisheries has designated certain areas in the coastal waters of the State of Louisiana as Oyster Seed Bed Areas. The exact location of those Seed Bed Areas must be obtained from the Department of Wildlife and Fisheries and any work done under a mineral lease from the State of Louisiana may necessarily be conducted in conformity with the rules and regulations promulgated by the said Department of Wildlife and Fisheries for Oyster Seed Bed Areas.

Applicant: LAND MANAGEMENT SERVICES, L.L.C.

Bidder	Cash Payment	Price/Acre	Rental	Oil	Gas	Other

Legend

- 08070032
- Blocks
- Active_Leases



TRACT 39945 - Portion of Block 122, South Timbalier Area, Revised, Terrebonne Parish, Louisiana

The beds and bottoms of all water bodies belonging to the State of Louisiana located in Block 122, South Timbalier Area, Revised, together with any present lands formed by accretion to the shoreline or islands formed therein, located in Terrebonne Parish, Louisiana, owned by and not presently under mineral lease as of July 9, 2008, from the State of Louisiana, the geographical area of which is more fully described as follows: Beginning at a point within Block 122, South Timbalier Area, Revised, being located on the Western boundary of State Lease No. 1249, as amended, having Coordinates of X = 2,254,935.16 and Y = 149,809.46; thence along the boundary of said State Lease No. 1249 the following courses: North 74 degrees 44 minutes 41 seconds East 3,135.50 feet to a point having X = 2,257,960.18 and Y = 150,634.47 and North 18 degrees 14 minutes 36 seconds West 627.22 feet to a point on the Louisiana Coastline, as decreed by the Supreme Court of the United States, as determined by a Special Master appointed therein, in litigation styled *United States v. State of Louisiana et al No. 9 Original*, in 1975, having Coordinates of X = 2,257,763.82 and Y = 151,230.16; thence Southeasterly on a straight line along said Louisiana Coastline to a point on the boundary of said State Lease No. 1249 having Coordinates of X = 2,258,386.02 and Y = 150,946.98; thence along the boundary of said State Lease No. 1249 the following courses: South 641.98 feet to a point having Coordinates of X = 2,258,386.02 and Y = 150,305.00; East 1,200.00 feet to a point having Coordinates of X = 2,259,586.02 and Y = 150,305.00; South 2,280.00 feet to a point having Coordinates of X = 2,259,586.02 and Y = 148,025.00; East 480.00 feet to a point having Coordinates of X = 2,260,066.02 and Y = 148,025.00 and South 2,040.00 feet to a point on the North boundary of State Lease No. 19233 having Coordinates of X = 2,260,066.02 and Y = 145,985.00; thence along the boundary of said State Lease No. 19233 the following courses: West 3,455.10 feet to its Northwest corner having Coordinates of X = 2,256,610.92 and Y = 145,985.00 and South 1,791.47 feet to its Southwest corner, also being a point on the boundary of said State Lease No. 1249 having Coordinates of X = 2,256,610.92 and Y = 144,193.53; thence West 1,482.88 feet along the boundary of said State Lease No. 1249 to a point having Coordinates of X = 2,255,128.04 and Y = 144,193.53; thence North 3,831.47 feet to a point have Coordinates of X = 2,255,128.04 and Y = 148,025.00; thence West 192.88 feet to a point having Coordinates of X = 2,254,935.16 and Y = 148,025.00; thence North 1,784.46 feet to the point of beginning, containing approximately **538.27 acres**, all as more particularly outlined on a plat on file in the Office of Mineral Resources, Department of Natural Resources. All bearings, distances and coordinates are based on Louisiana Coordinate System of 1927, (North or South Zone).

NOTE: The above description of the Tract nominated for lease has been provided and corrected, where required, exclusively by the nomination party. Any mineral lease selected from this Tract and awarded by the Louisiana State Mineral Board shall be without warranty of any kind,

either express, implied, or statutory, including, but not limited to, the implied warranties of merchantability and fitness for a particular purpose. Should the mineral lease awarded by the Louisiana State Mineral Board be subsequently modified, cancelled or abrogated due to the existence of conflicting leases, operating agreements, private claims or other future obligations or conditions which may affect all or any portion of the leased Tract, it shall not relieve the Lessee of the obligation to pay any bonus due thereon to the Louisiana State Mineral Board, nor shall the Louisiana State Mineral Board be obligated to refund any consideration paid by the Lessor prior to such modification, cancellation, or abrogation, including, but not limited to, bonuses, rentals and royalties.

NOTE: The State of Louisiana does hereby reserve, and this lease shall be subject to, the imprescriptible right of surface use in the nature of a servitude in favor of the Department of Natural Resources, including its Offices and Commissions, for the sole purpose of implementing, constructing, servicing and maintaining approved coastal zone management and/or restoration projects. Utilization of any and all rights derived under this lease by the mineral lessee, its agents, successors or assigns, shall not interfere with nor hinder the reasonable surface use by the Department of Natural Resources, its Offices or Commissions, as herein above reserved.




NOTE: It appears, according to our records, that a portion of this Tract is located within the restrictive safety fairway area as set out by the Corps of Engineers, U.S. Army and/or the restrictive anchorage area as set out by the U.S. Coast Guard.

NOTE: The Department of Wildlife and Fisheries has designated certain areas in the coastal waters of the State of Louisiana as Oyster Seed Bed Areas. The exact location of those Seed Bed Areas must be obtained from the Department of Wildlife and Fisheries and any work done under a mineral lease from the State of Louisiana may necessarily be conducted in conformity with the rules and regulations promulgated by the said Department of Wildlife and Fisheries for Oyster Seed Bed Areas.

Applicant: LAND MANAGEMENT SERVICES, L.L.C.

Bidder	Cash Payment	Price/Acre	Rental	Oil	Gas	Other

Legend

-  08070034
-  Blocks
-  Active_Leases

