

TRACT 39248 - Portion of Block 49, Breton Sound Area, Blocks 36, 48, and 49, Main Pass Area, Revised, Plaquemines Parish, Louisiana

All of the lands now or formerly constituting the beds and bottoms of all water bodies of every nature and description the title of which vests in the State of Louisiana, together with all islands arising therein and other lands formed by accretion or by reliction, where allowed by law, excepting tax adjudicated lands, and not presently under mineral lease on July 11, 2007, situated in Plaquemines Parish, Louisiana, and more particularly described as follows: Beginning at a point within Block 36, Main Pass Area, Revised, also being the Southernmost corner of State Lease No. 18014 having Coordinates of X = 2,633,650.00 and Y = 280,010.00; thence along the boundary of said State Lease No. 18014 the following courses: North 1,180.00 feet to a point having Coordinates of X = 2,633,650.00 and Y = 281,190.00 and North 64 degrees 31 minutes 25 seconds East 1,883.11 feet to its Southeast corner, also being the Southwest corner of State Lease No. 18164 having Coordinates of X = 2,635,350.00 and Y = 282,000.00; thence East 1,800.00 feet along the South boundary of said State Lease No. 18164 to its Southeast corner, also being the Southwest corner of State Lease No. 18625 having Coordinates of X = 2,637,150.00 and Y = 282,000.00; thence East 4,215.00 feet along the South boundary of said State Lease No. 18625 to its Southernmost Southeast corner, also being a point within Block 49, Breton Sound Area, having Coordinates of X = 2,641,365.00 and Y = 282,000.00; thence South 14,584.39 feet to a point within Block 48, Main Pass Area, Revised, also being a point on the Eastern boundary of State Lease No. 19003 having Coordinates of X = 2,641,365.00 and Y = 267,415.61; thence along the boundary of said State Lease No. 19003 the following courses: North 41 degrees 15 minutes 08 seconds West 1,930.49 feet to a point having Coordinates of X = 2,640,092.08 and Y = 268,866.98; North 61 degrees 58 minutes 38 seconds West 3,517.45 feet to a point having Coordinates of X = 2,636,987.01 and Y = 270,519.56 and West 3,987.01 feet to its Northwest corner, also being a point within Block 49, Main Pass Area, Revised, having Coordinates of X = 2,633,000.00 and Y = 270,519.56; thence North 9,642.61 feet to a point on the Southern boundary of said State Lease No. 18014 having Coordinates of X = 2,633,000.00 and Y = 280,162.17; thence South 76 degrees 49 minutes 26 seconds East 667.57 feet along the Southern boundary of said State Lease No. 18014 to the point of beginning, containing approximately **2,288.67 acres**, all as more particularly outlined on a plat on file in the Office of Mineral Resources, Department of Natural Resources. All bearings, distances and coordinates are based on Louisiana Coordinate System of 1927, (North or South Zone), where applicable.

NOTE: The above description of the Tract nominated for lease has been provided and corrected, where required, exclusively by the nomination party. Any mineral lease selected from this Tract and awarded by the Louisiana State Mineral Board shall be without warranty of any kind, either express, implied, or statutory, including, but not limited to, the implied warranties of merchantability and fitness for a particular purpose. Should the mineral lease awarded by the Louisiana State Mineral

Board be subsequently modified, cancelled or abrogated due to the existence of conflicting leases, operating agreements, private claims or other future obligations or conditions which may affect all or any portion of the leased Tract, it shall not relieve the Lessee of the obligation to pay any bonus due thereon to the Louisiana State Mineral Board, nor shall the Louisiana State Mineral Board be obligated to refund any consideration paid by the Lessor prior to such modification, cancellation, or abrogation, including, but not limited to, bonuses, rentals and royalties.

NOTE: The State of Louisiana does hereby reserve, and this lease shall be subject to, the imprescriptible right of surface use in the nature of a servitude in favor of the Department of Natural Resources, including its Offices and Commissions, for the sole purpose of implementing, constructing, servicing and maintaining approved coastal zone management and/or restoration projects. Utilization of any and all rights derived under this lease by the mineral lessee, its agents, successors or assigns, shall not interfere with nor hinder the reasonable surface use by the Department of Natural Resources, its Offices or Commissions, as herein above reserved.

NOTE: The Department of Wildlife and Fisheries has designated certain areas in the coastal waters of the State of Louisiana as Oyster Seed Bed Areas. The exact location of those Seed Bed Areas must be obtained from the Department of Wildlife and Fisheries and any work done under a mineral lease from the State of Louisiana may necessarily be conducted in conformity with the rules and regulations promulgated by the said Department of Wildlife and Fisheries for Oyster Seed Bed Areas.

Applicant: CYPRESS ENERGY CORPORATION

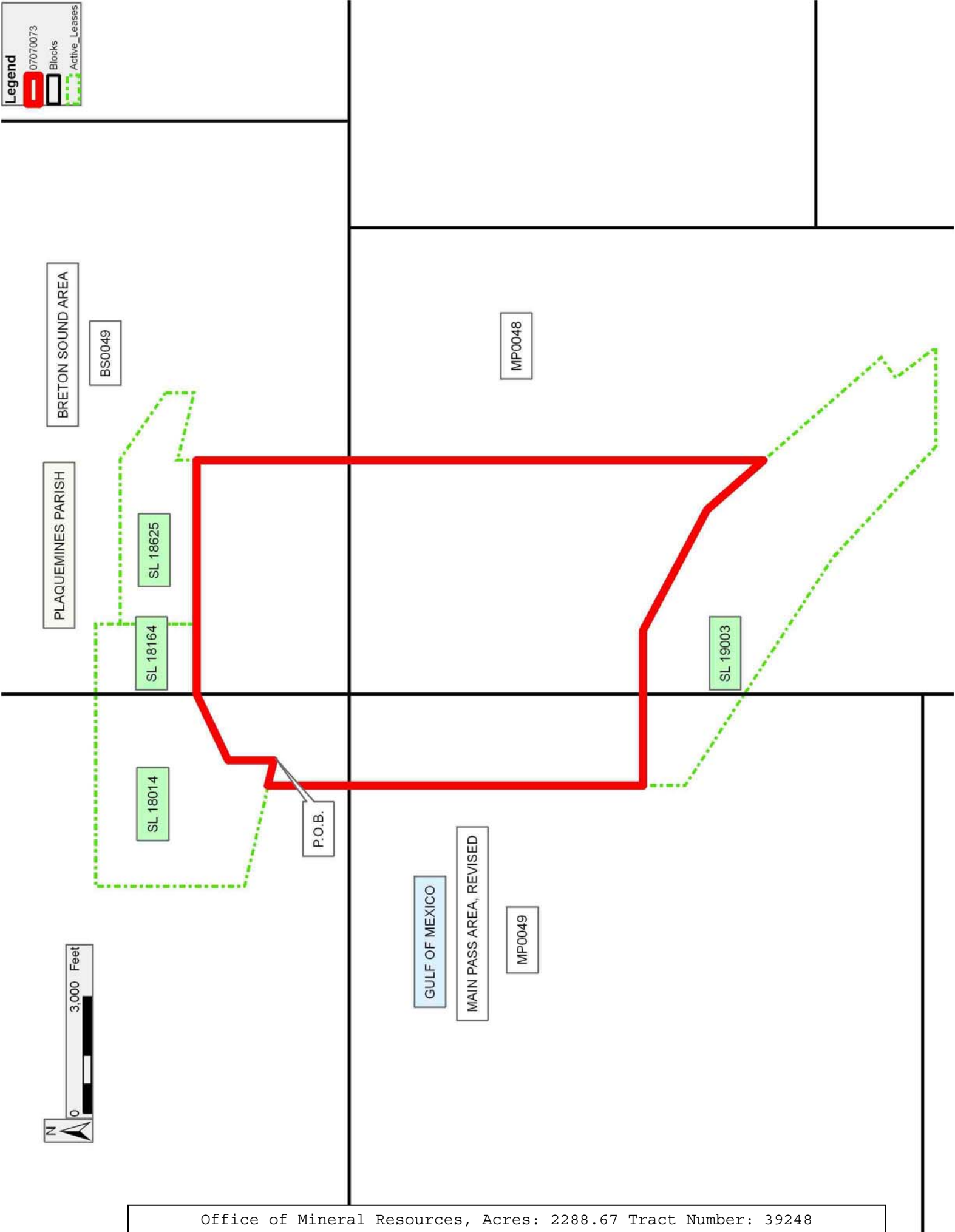
Bidder	Cash Payment	Price/ Acre	Rental	Oil	Gas	Other

Legend

07070073

Blocks

Active_Leases



TRACT 39249 - Portion of Block 49, Breton Sound Area, and Block 48, Main Pass Area, Revised, Plaquemines Parish, Louisiana

All of the lands now or formerly constituting the beds and bottoms of all water bodies of every nature and description the title of which vests in the State of Louisiana, together with all islands arising therein and other lands formed by accretion or by reliction, where allowed by law, excepting tax adjudicated lands, and not presently under mineral lease on July 11, 2007, situated in Plaquemines Parish, Louisiana, and more particularly described as follows: Beginning at the Southernmost Southeast corner of State Lease No. 18625, also being a point within Block 49, Breton Sound Area, having Coordinates of X = 2,641,365.00 and Y = 282,000.00; thence along the boundary of said State Lease No. 18625 the following courses: North 500.00 feet to a point having Coordinates of X = 2,641,365.00 and Y = 282,500.00 and South 75 degrees 51 minutes 46 seconds East 1,789.19 feet to its Easternmost Southeast corner having Coordinates of X = 2,643,100.00 and Y = 282,063.00; thence East 4,249.49 feet to a point having Coordinates of X = 2,647,349.49 and Y = 282,063.00; thence South 15,238.67 feet to a point within Block 48, Main Pass Area, Revised, having Coordinates of X = 2,647,349.49 and Y = 266,824.33; thence West 5,465.91 feet to a point on the Eastern boundary of State Lease No. 19003 having Coordinates of X = 2,641,883.58 and Y = 266,824.33; thence North 41 degrees 15 minutes 08 seconds West 786.47 feet along the Eastern boundary of said State Lease No. 19003 to a point having Coordinates of X = 2,641,365.00 and Y = 267,415.61; thence North 14,584.39 feet to the point of beginning, containing approximately **2,098.75 acres**, all as more particularly outlined on a plat on file in the Office of Mineral Resources, Department of Natural Resources. All bearings, distances and coordinates are based on Louisiana Coordinate System of 1927, (North or South Zone), where applicable.

NOTE: The above description of the Tract nominated for lease has been provided and corrected, where required, exclusively by the nomination party. Any mineral lease selected from this Tract and awarded by the Louisiana State Mineral Board shall be without warranty of any kind, either express, implied, or statutory, including, but not limited to, the implied warranties of merchantability and fitness for a particular purpose. Should the mineral lease awarded by the Louisiana State Mineral Board be subsequently modified, cancelled or abrogated due to the existence of conflicting leases, operating agreements, private claims or other future obligations or conditions which may affect all or any portion of the leased Tract, it shall not relieve the Lessee of the obligation to pay any bonus due thereon to the Louisiana State Mineral Board, nor shall the Louisiana State Mineral Board be obligated to refund any consideration paid by the Lessor prior to such modification, cancellation, or abrogation, including, but not limited to, bonuses, rentals and royalties.

NOTE: The State of Louisiana does hereby reserve, and this lease shall be subject to, the imprescriptible right of surface use in the nature of a servitude in favor of the Department of Natural Resources, including its

Offices and Commissions, for the sole purpose of implementing, constructing, servicing and maintaining approved coastal zone management and/or restoration projects. Utilization of any and all rights derived under this lease by the mineral lessee, its agents, successors or assigns, shall not interfere with nor hinder the reasonable surface use by the Department of Natural Resources, its Offices or Commissions, as herein above reserved.

NOTE: The Department of Wildlife and Fisheries has designated certain areas in the coastal waters of the State of Louisiana as Oyster Seed Bed Areas. The exact location of those Seed Bed Areas must be obtained from the Department of Wildlife and Fisheries and any work done under a mineral lease from the State of Louisiana may necessarily be conducted in conformity with the rules and regulations promulgated by the said Department of Wildlife and Fisheries for Oyster Seed Bed Areas.

Applicant: CYPRESS ENERGY CORPORATION

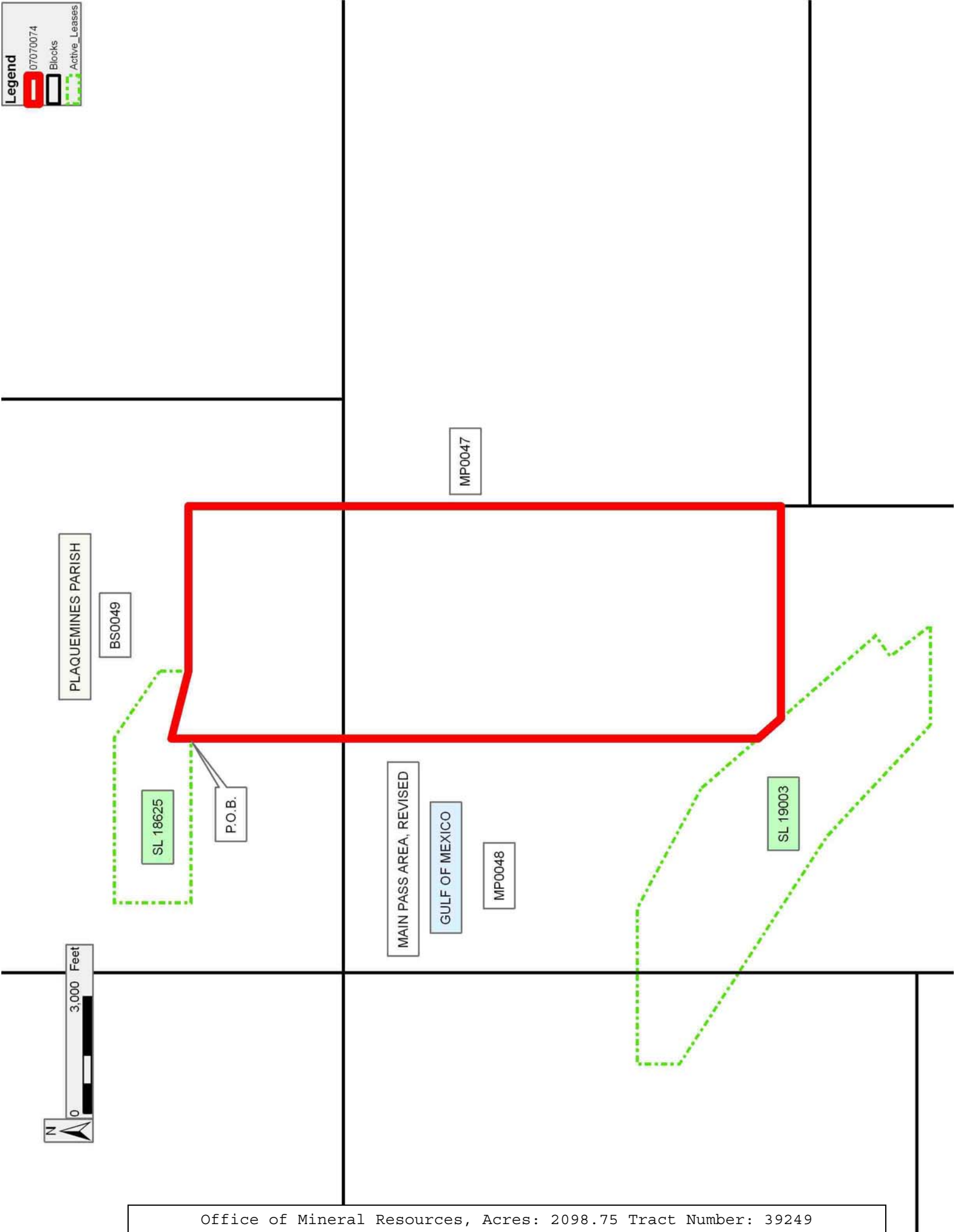
Bidder	Cash Payment	Price/ Acre	Rental	Oil	Gas	Other

Legend

07070074

Blocks

Active_Leases



TRACT 39250 - Portion of Block 49, Breton Sound Area, Blocks 47, and 48, Main Pass Area, Revised, Plaquemines Parish, Louisiana

All of the lands now or formerly constituting the beds and bottoms of all water bodies of every nature and description the title of which vests in the State of Louisiana, together with all islands arising therein and other lands formed by accretion or by reliction, where allowed by law, excepting tax adjudicated lands, and not presently under mineral lease on July 11, 2007, situated in Plaquemines Parish, Louisiana, and more particularly described as follows: Beginning at a point within Block 49, Breton Sound Area, having Coordinates of X = 2,647,349.49 and Y = 282,063.00; thence East 2,750.51 feet to a point on the East line of said Block 49 having Coordinates of X = 2,650,100.00 and Y = 282,063.00; thence South 3,983.00 feet along the East line of said Block 49 to its Southeast corner having Coordinates of X = 2,650,100.00 and Y = 278,080.00; thence East 450.00 feet to the Southwest corner of State Lease No. 16393, also being the Northwest corner of State Lease No. 16392 having Coordinates of X = 2,650,550.00 and Y = 278,080.00; thence South 2,600.00 feet along the West boundary of said State Lease No. 16392 to its Southwest corner, also being the Westernmost Northwest corner of State Lease No. 16570, as amended, having Coordinates of X = 2,650,550.00 and Y = 275,480.00; thence along the boundary of said State Lease No. 16570 the following courses: South 258.57 feet to a point having Coordinates of X = 2,650,550.00 and Y = 275,221.43 and South 59 degrees 15 minutes 06 seconds East 1,703.93 feet to the Northernmost corner of State Lease No. 19046 having Coordinates of X = 2,652,014.40 and Y = 274,350.27; thence along the boundary of said State Lease No. 19046 the following courses: South 45 degrees 40 minutes 15 seconds West 2,061.13 feet to a point having Coordinates of X = 2,650,540.00 and Y = 272,910.00 and South 47 degrees 07 minutes 16 seconds East 2,101.55 feet to its Southernmost corner, also being a point on the North boundary of State Lease No. 1268, as amended, having Coordinates of X = 2,652,080.00 and Y = 271,480.00; thence along the boundary of said State Lease No. 1268 the following courses: West 2,055.00 feet and South 4,655.67 feet to a point having Coordinates of X = 2,650,025.00 and Y = 266,824.33; thence West 2,675.51 feet to a point on the West line of Block 47, Main Pass Area, Revised, having Coordinates of X = 2,647,349.49 and Y = 266,824.33; thence North 15,238.67 feet to the point of beginning, containing approximately **1,086.02 acres**, all as more particularly outlined on a plat on file in the Office of Mineral Resources, Department of Natural Resources. All bearings, distances and coordinates are based on Louisiana Coordinate System of 1927, (North or South Zone), where applicable.

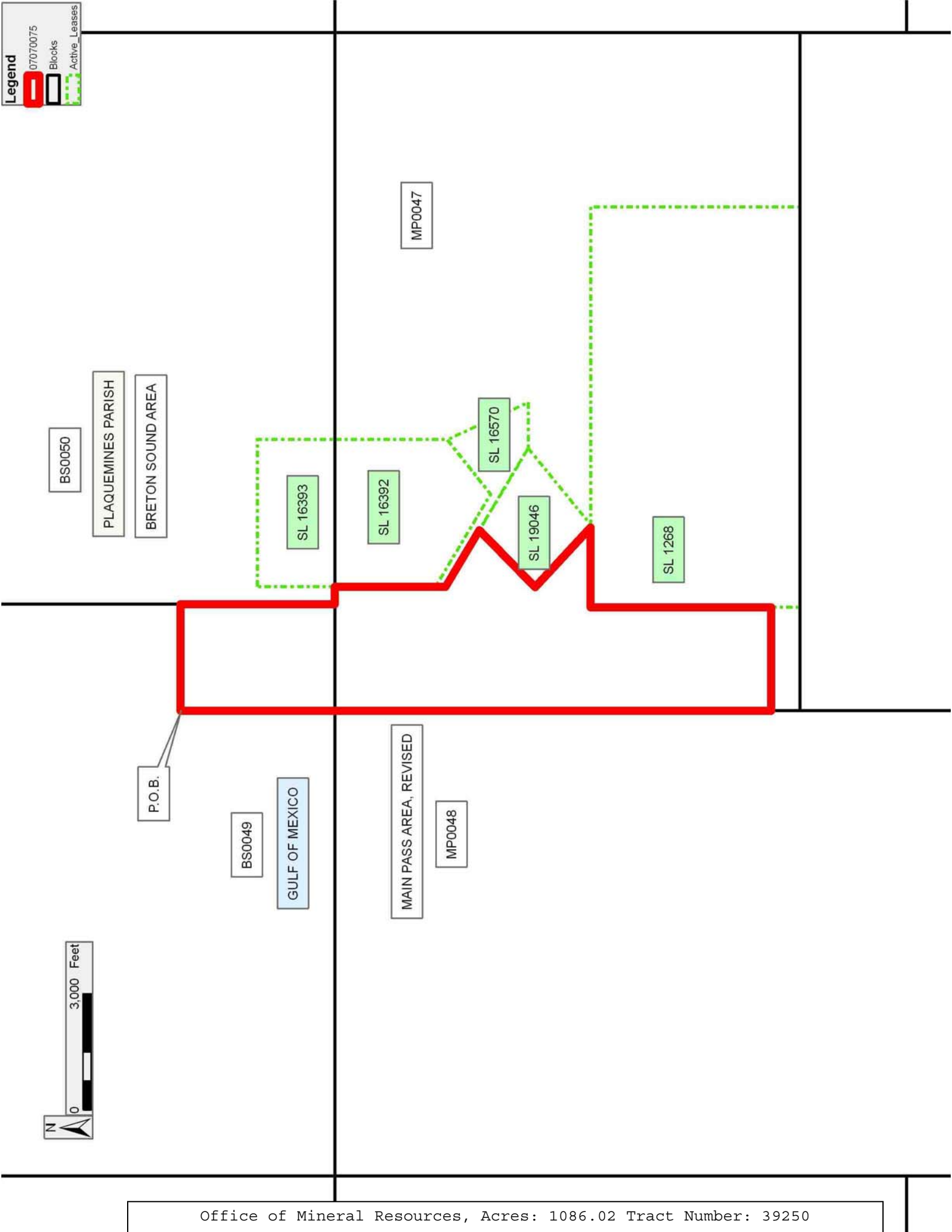
NOTE: The above description of the Tract nominated for lease has been provided and corrected, where required, exclusively by the nomination party. Any mineral lease selected from this Tract and awarded by the Louisiana State Mineral Board shall be without warranty of any kind, either express, implied, or statutory, including, but not limited to, the implied warranties of merchantability and fitness for a particular purpose. Should the mineral lease awarded by the Louisiana State Mineral

Board be subsequently modified, cancelled or abrogated due to the existence of conflicting leases, operating agreements, private claims or other future obligations or conditions which may affect all or any portion of the leased Tract, it shall not relieve the Lessee of the obligation to pay any bonus due thereon to the Louisiana State Mineral Board, nor shall the Louisiana State Mineral Board be obligated to refund any consideration paid by the Lessor prior to such modification, cancellation, or abrogation, including, but not limited to, bonuses, rentals and royalties.

NOTE: The State of Louisiana does hereby reserve, and this lease shall be subject to, the imprescriptible right of surface use in the nature of a servitude in favor of the Department of Natural Resources, including its Offices and Commissions, for the sole purpose of implementing, constructing, servicing and maintaining approved coastal zone management and/or restoration projects. Utilization of any and all rights derived under this lease by the mineral lessee, its agents, successors or assigns, shall not interfere with nor hinder the reasonable surface use by the Department of Natural Resources, its Offices or Commissions, as herein above reserved.

Applicant: CYPRESS ENERGY CORPORATION

Bidder	Cash Payment	Price/ Acre	Rental	Oil	Gas	Other



TRACT 39251 - Portion of Blocks 35, and 50, Main Pass Area, Revised, Plaquemines Parish, Louisiana

All of the lands now or formerly constituting the beds and bottoms of all water bodies of every nature and description the title of which vests in the State of Louisiana, together with all islands arising therein and other lands formed by accretion or by reliction, where allowed by law, excepting tax adjudicated lands, and not presently under mineral lease on July 11, 2007, situated in Plaquemines Parish, Louisiana, and more particularly described as follows: Beginning at a point within Block 35, Main Pass Area, Revised, having Coordinates of X = 2,609,198.21 and Y = 282,000.00; thence East 8,956.58 feet to a point having Coordinates of X = 2,618,154.79 and Y = 282,000.00; thence South 15,175.67 feet to a point within Block 50, Main Pass Area, Revised, having Coordinates of X = 2,618,154.79 and Y = 266,824.33; thence West 8,956.58 feet to a point having Coordinates of X = 2,609,198.21 and Y = 266,824.33; thence North 15,175.67 feet to the point of beginning, **LESS AND EXCEPT** all of State Lease No. 18869, which lies within the above described tract, being more fully described as follows: Commencing at the point of beginning of the above described nominated tract having Coordinates of X = 2,609,198.21 and Y = 282,000.00; thence South 16 degrees 38 minutes 09 seconds East 6,585.73 feet to a point within Block 50, Main Pass Area, Revised, also being the Northernmost corner of said State Lease No. 18869 having Coordinates of X = 2,611,083.61 and Y = 275,689.92; thence along the boundary of said State Lease No. 18869 the following courses: South 62 degrees 21 minutes 31 seconds East 7,478.93 feet to a point having Coordinates of X = 2,617,708.96 and Y = 272,220.17; South 18 degrees 43 minutes 16 seconds West 2,819.34 feet to a point having Coordinates of X = 2,616,804.06 and Y = 269,550.00; West 3,619.45 feet to a point having Coordinates of X = 2,613,184.61 and Y = 269,550.00; North 47 degrees 27 minutes 17 seconds West 5,098.02 feet to a point having Coordinates of X = 2,609,428.68 and Y = 272,997.14 and North 31 degrees 34 minutes 27 seconds East 3,160.67 feet to its point of beginning, the nominated tract containing approximately **2,423 acres**, all as more particularly outlined on a plat on file in the Office of Mineral Resources, Department of Natural Resources. All bearings, distances and coordinates are based on Louisiana Coordinate System of 1927, (North or South Zone), where applicable.

NOTE: The above description of the Tract nominated for lease has been provided and corrected, where required, exclusively by the nomination party. Any mineral lease selected from this Tract and awarded by the Louisiana State Mineral Board shall be without warranty of any kind, either express, implied, or statutory, including, but not limited to, the implied warranties of merchantability and fitness for a particular purpose. Should the mineral lease awarded by the Louisiana State Mineral Board be subsequently modified, cancelled or abrogated due to the existence of conflicting leases, operating agreements, private claims or other future obligations or conditions which may affect all or any portion of the leased Tract, it shall not relieve the Lessee of the obligation to pay any bonus due thereon to the Louisiana State Mineral Board, nor shall

the Louisiana State Mineral Board be obligated to refund any consideration paid by the Lessor prior to such modification, cancellation, or abrogation, including, but not limited to, bonuses, rentals and royalties.

NOTE: The State of Louisiana does hereby reserve, and this lease shall be subject to, the imprescriptible right of surface use in the nature of a servitude in favor of the Department of Natural Resources, including its Offices and Commissions, for the sole purpose of implementing, constructing, servicing and maintaining approved coastal zone management and/or restoration projects. Utilization of any and all rights derived under this lease by the mineral lessee, its agents, successors or assigns, shall not interfere with nor hinder the reasonable surface use by the Department of Natural Resources, its Offices or Commissions, as herein above reserved.

NOTE: The Department of Wildlife and Fisheries has designated certain areas in the coastal waters of the State of Louisiana as Oyster Seed Bed Areas. The exact location of those Seed Bed Areas must be obtained from the Department of Wildlife and Fisheries and any work done under a mineral lease from the State of Louisiana may necessarily be conducted in conformity with the rules and regulations promulgated by the said Department of Wildlife and Fisheries for Oyster Seed Bed Areas.

Applicant: CYPRESS ENERGY CORPORATION

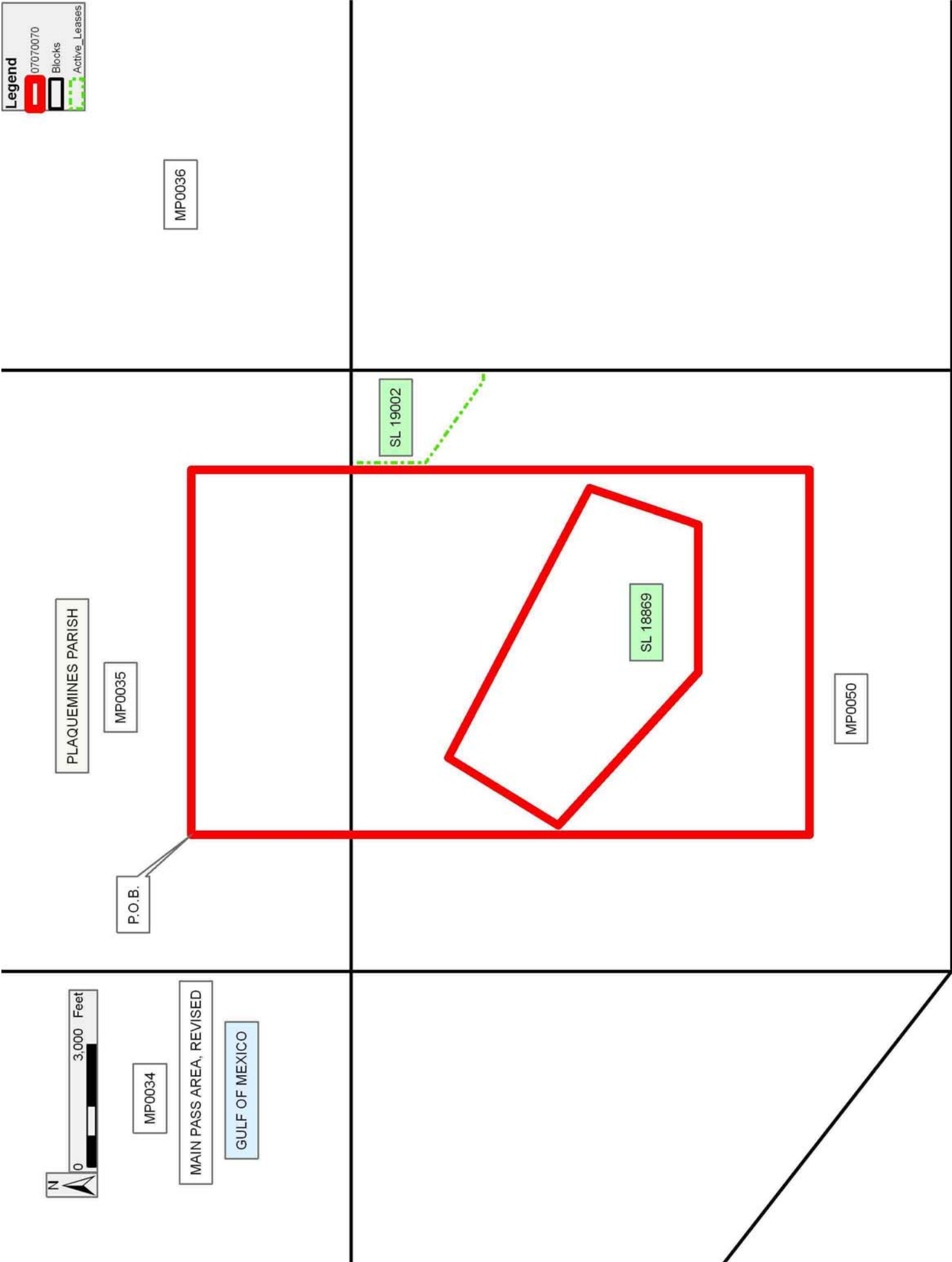
Bidder	Cash Payment	Price/ Acre	Rental	Oil	Gas	Other

Legend

07070070

Blocks

Active_Leases



TRACT 39252 - Jefferson Parish, Louisiana

All of the lands now or formerly constituting the beds and bottoms of all water bodies of every nature and description the title of which vests in the State of Louisiana, together with all islands arising therein and other lands formed by accretion or by reliction, where allowed by law, excepting tax adjudicated lands, and not presently under mineral lease on July 11, 2007, situated in Jefferson Parish, Louisiana, and more particularly described as follows: Beginning at a point on the West boundary of State Lease No. 15631, as amended, having Coordinates of X = 2,431,127.83 and Y = 273,346.93; thence South 1,542.30 feet along the West boundary of said State Lease No. 15631 to its Southwest corner, also being the Northwest corner of State Lease No. 15744, as amended, having Coordinates of X = 2,431,127.83 and Y = 271,804.63; thence South 3,234.63 feet along the West boundary of said State Lease No. 15744 to its Southwest corner having Coordinates of X = 2,431,127.83 and Y = 268,570.00; thence South 3,743.30 feet to a point having Coordinates of X = 2,431,127.83 and Y = 264,826.70; thence West approximately 4,042 feet to a point on the common Eastern boundary of State Lease No. 1217, as amended, and a portion of State Lease No. 356, as amended, having a Coordinate of Y = 264,826.70; thence Northerly approximately 3,436 feet along the common Eastern boundary of said State Lease No. 1217 and said portion of said State Lease No. 356 to the Northernmost corner of said portion of said State Lease No. 356; thence continue along the Eastern boundary said of State Lease No. 1217 the following courses: Northerly approximately 733 feet; Westerly approximately 2,502 feet and Northerly approximately 4,357 feet to a point having a Coordinate of Y = 273,346.93; thence East approximately 6,544 feet to the point of beginning, **LESS AND EXCEPT** that portion, if any, of State Lease No. 1217, as amended, and State Lease No. 356, as amended, that may lie within the above described tract, containing approximately **962 acres**, all as more particularly outlined on a plat on file in the Office of Mineral Resources, Department of Natural Resources. All bearings, distances and coordinates are based on Louisiana Coordinate System of 1927, (North or South Zone), where applicable.

NOTE: The above description of the Tract nominated for lease has been provided and corrected, where required, exclusively by the nomination party. Any mineral lease selected from this Tract and awarded by the Louisiana State Mineral Board shall be without warranty of any kind, either express, implied, or statutory, including, but not limited to, the implied warranties of merchantability and fitness for a particular purpose. Should the mineral lease awarded by the Louisiana State Mineral Board be subsequently modified, cancelled or abrogated due to the existence of conflicting leases, operating agreements, private claims or other future obligations or conditions which may affect all or any portion of the leased Tract, it shall not relieve the Lessee of the obligation to pay any bonus due thereon to the Louisiana State Mineral Board, nor shall the Louisiana State Mineral Board be obligated to refund any consideration

paid by the Lessor prior to such modification, cancellation, or abrogation, including, but not limited to, bonuses, rentals and royalties.

NOTE: The State of Louisiana does hereby reserve, and this lease shall be subject to, the imprescriptible right of surface use in the nature of a servitude in favor of the Department of Natural Resources, including its Offices and Commissions, for the sole purpose of implementing, constructing, servicing and maintaining approved coastal zone management and/or restoration projects. Utilization of any and all rights derived under this lease by the mineral lessee, its agents, successors or assigns, shall not interfere with nor hinder the reasonable surface use by the Department of Natural Resources, its Offices or Commissions, as herein above reserved.

NOTE: The Department of Wildlife and Fisheries has designated certain areas in the coastal waters of the State of Louisiana as Oyster Seed Bed Areas. The exact location of those Seed Bed Areas must be obtained from the Department of Wildlife and Fisheries and any work done under a mineral lease from the State of Louisiana may necessarily be conducted in conformity with the rules and regulations promulgated by the said Department of Wildlife and Fisheries for Oyster Seed Bed Areas.

Applicant: THUNDERBAY EXPLORATION, INC.

Bidder	Cash Payment	Price/ Acre	Rental	Oil	Gas	Other

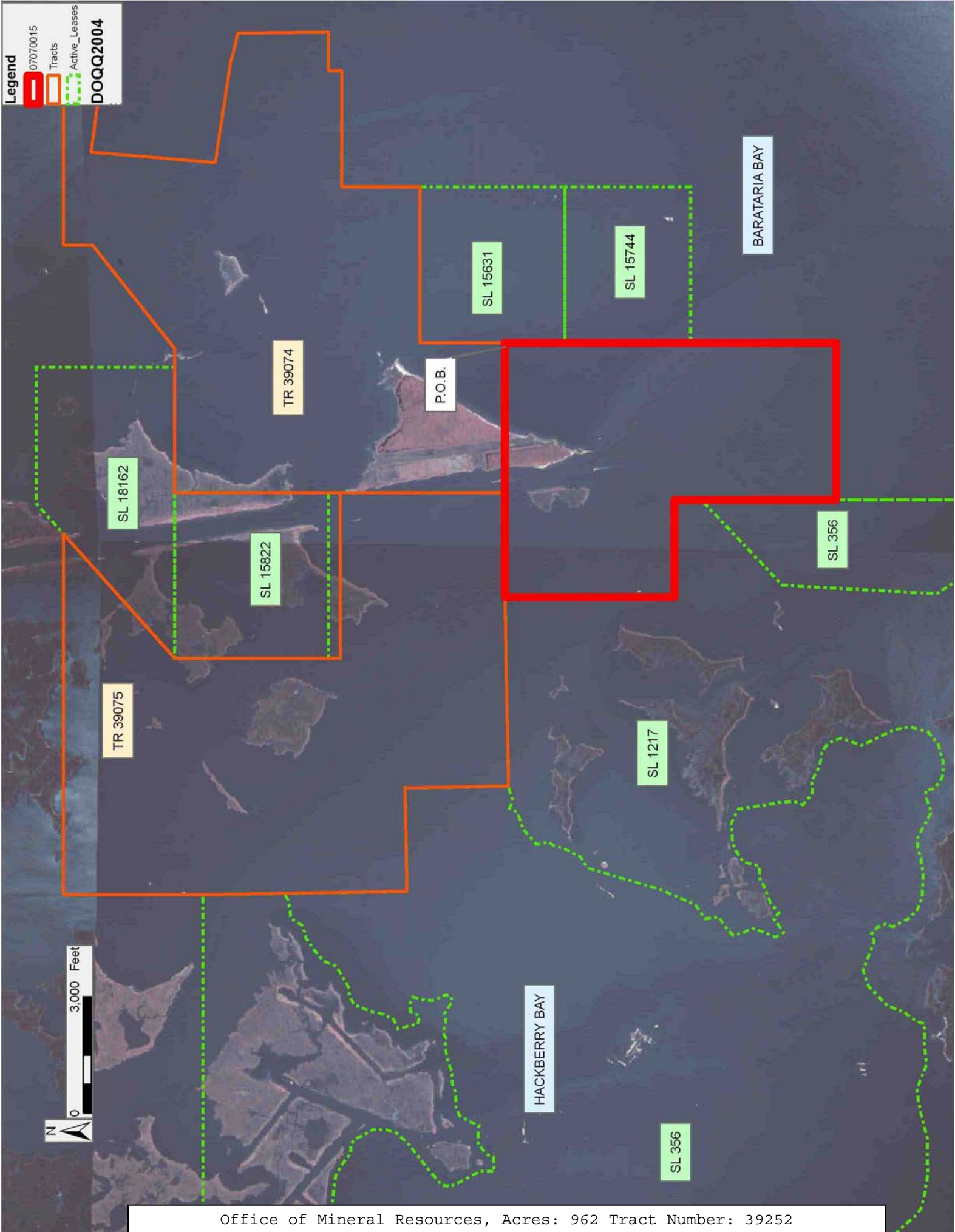
Legend

07070015

Tracts

Active_Leases

DOQQ2004



TRACT 39253 - Lafourche Parish, Louisiana

All of the lands now or formerly constituting the beds and bottoms of all water bodies of every nature and description the title of which vests in the State of Louisiana, together with all islands arising therein and other lands formed by accretion or by reliction, where allowed by law, excepting tax adjudicated lands, and not presently under mineral lease on July 11, 2007, situated in Lafourche Parish, Louisiana, and more particularly described as follows: Beginning at a point having Coordinates of X = 2,331,705.00 and Y = 233,390.00; thence East 7,855.00 feet to a point having Coordinates of X = 2,339,560.00 and Y = 233,390.00; thence South 5,970.00 feet to a point having Coordinates of X = 2,339,560.00 and Y = 227,420.00; thence South 5,070.00 feet to a point having Coordinates of X = 2,339,560.00 and Y = 222,350.00; thence West 7,855.00 feet to a point having Coordinates of X = 2,331,705.00 and Y = 222,350.00; thence North 11,040.00 feet to the point of beginning, containing approximately **446 acres**, all as more particularly outlined on a plat on file in the Office of Mineral Resources, Department of Natural Resources. All bearings, distances and coordinates are based on Louisiana Coordinate System of 1927, (North or South Zone), where applicable.

NOTE: The above description of the Tract nominated for lease has been provided and corrected, where required, exclusively by the nomination party. Any mineral lease selected from this Tract and awarded by the Louisiana State Mineral Board shall be without warranty of any kind, either express, implied, or statutory, including, but not limited to, the implied warranties of merchantability and fitness for a particular purpose. Should the mineral lease awarded by the Louisiana State Mineral Board be subsequently modified, cancelled or abrogated due to the existence of conflicting leases, operating agreements, private claims or other future obligations or conditions which may affect all or any portion of the leased Tract, it shall not relieve the Lessee of the obligation to pay any bonus due thereon to the Louisiana State Mineral Board, nor shall the Louisiana State Mineral Board be obligated to refund any consideration paid by the Lessor prior to such modification, cancellation, or abrogation, including, but not limited to, bonuses, rentals and royalties.

NOTE: The State of Louisiana does hereby reserve, and this lease shall be subject to, the imprescriptible right of surface use in the nature of a servitude in favor of the Department of Natural Resources, including its Offices and Commissions, for the sole purpose of implementing, constructing, servicing and maintaining approved coastal zone management and/or restoration projects. Utilization of any and all rights derived under this lease by the mineral lessee, its agents, successors or assigns, shall not interfere with nor hinder the reasonable surface use by the Department of Natural Resources, its Offices or Commissions, as herein above reserved.

NOTE: The Department of Wildlife and Fisheries has designated certain areas in the coastal waters of the State of Louisiana as Oyster Seed Bed

Areas. The exact location of those Seed Bed Areas must be obtained from the Department of Wildlife and Fisheries and any work done under a mineral lease from the State of Louisiana may necessarily be conducted in conformity with the rules and regulations promulgated by the said Department of Wildlife and Fisheries for Oyster Seed Bed Areas.

Applicant: PARKE ENERGY, LLC

Bidder	Cash Payment	Price/ Acre	Rental	Oil	Gas	Other



TRACT 39254 - Lafourche Parish, Louisiana

All of the lands now or formerly constituting the beds and bottoms of all water bodies of every nature and description the title of which vests in the State of Louisiana, together with all islands arising therein and other lands formed by accretion or by reliction, where allowed by law, excepting tax adjudicated lands, and not presently under mineral lease on July 11, 2007, situated in Lafourche Parish, Louisiana, and more particularly described as follows: Beginning at a point having Coordinates of X = 2,339,560.00 and Y = 227,420.00; thence East 11,370.19 feet to a point having Coordinates of X = 2,350,930.19 and Y = 227,420.00; thence South approximately 5,133 feet to a point on the North boundary of State Lease No. 1908, as amended; thence along the boundary of said State Lease No. 1908 the following courses: South 88 degrees 59 minutes 54 seconds West approximately 4,937 feet and South 03 degrees 47 minutes 18 seconds East approximately 4,594 feet to a point of intersection with a line having a bearing of North 85 degrees 47 minutes 29 seconds East commencing at a point having Coordinates X = 2,339,560.00 and Y = 217,192.00; thence South 85 degrees 47 minutes 29 seconds West approximately 6,763 feet to a point having Coordinates of X = 2,339,560.00 and Y = 217,192.00; thence North 10,228.00 feet to the point of beginning, containing approximately **173 acres**, all as more particularly outlined on a plat on file in the Office of Mineral Resources, Department of Natural Resources. All bearings, distances and coordinates are based on Louisiana Coordinate System of 1927, (North or South Zone), where applicable.

NOTE: The above description of the Tract nominated for lease has been provided and corrected, where required, exclusively by the nomination party. Any mineral lease selected from this Tract and awarded by the Louisiana State Mineral Board shall be without warranty of any kind, either express, implied, or statutory, including, but not limited to, the implied warranties of merchantability and fitness for a particular purpose. Should the mineral lease awarded by the Louisiana State Mineral Board be subsequently modified, cancelled or abrogated due to the existence of conflicting leases, operating agreements, private claims or other future obligations or conditions which may affect all or any portion of the leased Tract, it shall not relieve the Lessee of the obligation to pay any bonus due thereon to the Louisiana State Mineral Board, nor shall the Louisiana State Mineral Board be obligated to refund any consideration paid by the Lessor prior to such modification, cancellation, or abrogation, including, but not limited to, bonuses, rentals and royalties.

NOTE: The State of Louisiana does hereby reserve, and this lease shall be subject to, the imprescriptible right of surface use in the nature of a servitude in favor of the Department of Natural Resources, including its Offices and Commissions, for the sole purpose of implementing, constructing, servicing and maintaining approved coastal zone management and/or restoration projects. Utilization of any and all rights derived under this lease by the mineral lessee, its agents, successors or assigns, shall not interfere with nor hinder the reasonable surface use by the

Department of Natural Resources, its Offices or Commissions, as herein above reserved.

NOTE: The Department of Wildlife and Fisheries has designated certain areas in the coastal waters of the State of Louisiana as Oyster Seed Bed Areas. The exact location of those Seed Bed Areas must be obtained from the Department of Wildlife and Fisheries and any work done under a mineral lease from the State of Louisiana may necessarily be conducted in conformity with the rules and regulations promulgated by the said Department of Wildlife and Fisheries for Oyster Seed Bed Areas.

Applicant: PARKE ENERGY, LLC

Bidder	Cash Payment	Price/ Acre	Rental	Oil	Gas	Other

Legend
07070050
Active_Leases
DOQQ2004



TRACT 39255 - Lafourche Parish, Louisiana

All of the lands now or formerly constituting the beds and bottoms of all water bodies of every nature and description the title of which vests in the State of Louisiana, together with all islands arising therein and other lands formed by accretion or by reliction, where allowed by law, excepting tax adjudicated lands, and not presently under mineral lease on July 11, 2007, situated in Lafourche Parish, Louisiana, and more particularly described as follows: Beginning at a point having Coordinates of X = 2,331,705.00 and Y = 222,350.00; thence East 7,855.00 feet to a point having Coordinates of X = 2,339,560.00 and Y = 222,350.00; thence South 5,158.00 feet to a point having Coordinates of X = 2,339,560.00 and Y = 217,192.00; thence North 85 degrees 47 minutes 29 seconds East approximately 6,763 feet to a point on State Lease No. 1908, as amended; thence Southerly approximately 170 feet to the Southwest corner of State Lease No. 1908, as amended; thence South 03 degrees 47 minutes 18 seconds East approximately 3,386 feet to a point having Coordinates of X = 2,346,308.93 and Y = 214,140.00; thence West 14,603.93 feet to a point having Coordinates of X = 2,331,705.00 and Y = 214,140.00; thence North 8,210.00 feet to the point of beginning, containing approximately **1023 acres**, all as more particularly outlined on a plat on file in the Office of Mineral Resources, Department of Natural Resources. All bearings, distances and coordinates are based on Louisiana Coordinate System of 1927, (North or South Zone), where applicable.

NOTE: The above description of the Tract nominated for lease has been provided and corrected, where required, exclusively by the nomination party. Any mineral lease selected from this Tract and awarded by the Louisiana State Mineral Board shall be without warranty of any kind, either express, implied, or statutory, including, but not limited to, the implied warranties of merchantability and fitness for a particular purpose. Should the mineral lease awarded by the Louisiana State Mineral Board be subsequently modified, cancelled or abrogated due to the existence of conflicting leases, operating agreements, private claims or other future obligations or conditions which may affect all or any portion of the leased Tract, it shall not relieve the Lessee of the obligation to pay any bonus due thereon to the Louisiana State Mineral Board, nor shall the Louisiana State Mineral Board be obligated to refund any consideration paid by the Lessor prior to such modification, cancellation, or abrogation, including, but not limited to, bonuses, rentals and royalties.

NOTE: The State of Louisiana does hereby reserve, and this lease shall be subject to, the imprescriptible right of surface use in the nature of a servitude in favor of the Department of Natural Resources, including its Offices and Commissions, for the sole purpose of implementing, constructing, servicing and maintaining approved coastal zone management and/or restoration projects. Utilization of any and all rights derived under this lease by the mineral lessee, its agents, successors or assigns, shall not interfere with nor hinder the reasonable surface use by the

Department of Natural Resources, its Offices or Commissions, as herein above reserved.

NOTE: The Department of Wildlife and Fisheries has designated certain areas in the coastal waters of the State of Louisiana as Oyster Seed Bed Areas. The exact location of those Seed Bed Areas must be obtained from the Department of Wildlife and Fisheries and any work done under a mineral lease from the State of Louisiana may necessarily be conducted in conformity with the rules and regulations promulgated by the said Department of Wildlife and Fisheries for Oyster Seed Bed Areas.

Applicant: PARKE ENERGY, LLC

Bidder	Cash Payment	Price/ Acre	Rental	Oil	Gas	Other

Legend

07070052

Active_Leases

DOQQ2004



TRACT 39256 - Portion of Block 7, Grand Isle Area, Jefferson and Plaquemines Parishes, Louisiana

All of the lands now or formerly constituting the beds and bottoms of all water bodies of every nature and description the title of which vests in the State of Louisiana, together with all islands arising therein and other lands formed by accretion or by reliction, where allowed by law, excepting tax adjudicated lands, and not presently under mineral lease on July 11, 2007, situated in Jefferson and Plaquemines Parishes, Louisiana, and more particularly described as follows: Beginning at the Southeast corner of Block 7, Grand Isle Area, having Coordinates of X = 2,457,659.89 and Y = 200,293.43; thence West 14,758.04 feet along the South line of said Block 7 to its Southwest corner having Coordinates of X = 2,442,901.85 and Y = 200,293.43; thence North 7,379.02 feet along the West line of said Block 7 to a point having Coordinates of X = 2,442,901.85 and Y = 207,672.45; thence East 14,758.04 feet to a point on the East line of said Block 7 having Coordinates of X = 2,457,659.89 and Y = 207,672.45; thence South 7,379.02 feet along the East line of said Block 7 to the point of beginning, containing approximately **2,500.00 acres**, all as more particularly outlined on a plat on file in the Office of Mineral Resources, Department of Natural Resources. All bearings, distances and coordinates are based on Louisiana Coordinate System of 1927, (North or South Zone), where applicable.

NOTE: The above description of the Tract nominated for lease has been provided and corrected, where required, exclusively by the nomination party. Any mineral lease selected from this Tract and awarded by the Louisiana State Mineral Board shall be without warranty of any kind, either express, implied, or statutory, including, but not limited to, the implied warranties of merchantability and fitness for a particular purpose. Should the mineral lease awarded by the Louisiana State Mineral Board be subsequently modified, cancelled or abrogated due to the existence of conflicting leases, operating agreements, private claims or other future obligations or conditions which may affect all or any portion of the leased Tract, it shall not relieve the Lessee of the obligation to pay any bonus due thereon to the Louisiana State Mineral Board, nor shall the Louisiana State Mineral Board be obligated to refund any consideration paid by the Lessor prior to such modification, cancellation, or abrogation, including, but not limited to, bonuses, rentals and royalties.

NOTE: The State of Louisiana does hereby reserve, and this lease shall be subject to, the imprescriptible right of surface use in the nature of a servitude in favor of the Department of Natural Resources, including its Offices and Commissions, for the sole purpose of implementing, constructing, servicing and maintaining approved coastal zone management and/or restoration projects. Utilization of any and all rights derived under this lease by the mineral lessee, its agents, successors or assigns, shall not interfere with nor hinder the reasonable surface use by the Department of Natural Resources, its Offices or Commissions, as herein above reserved.

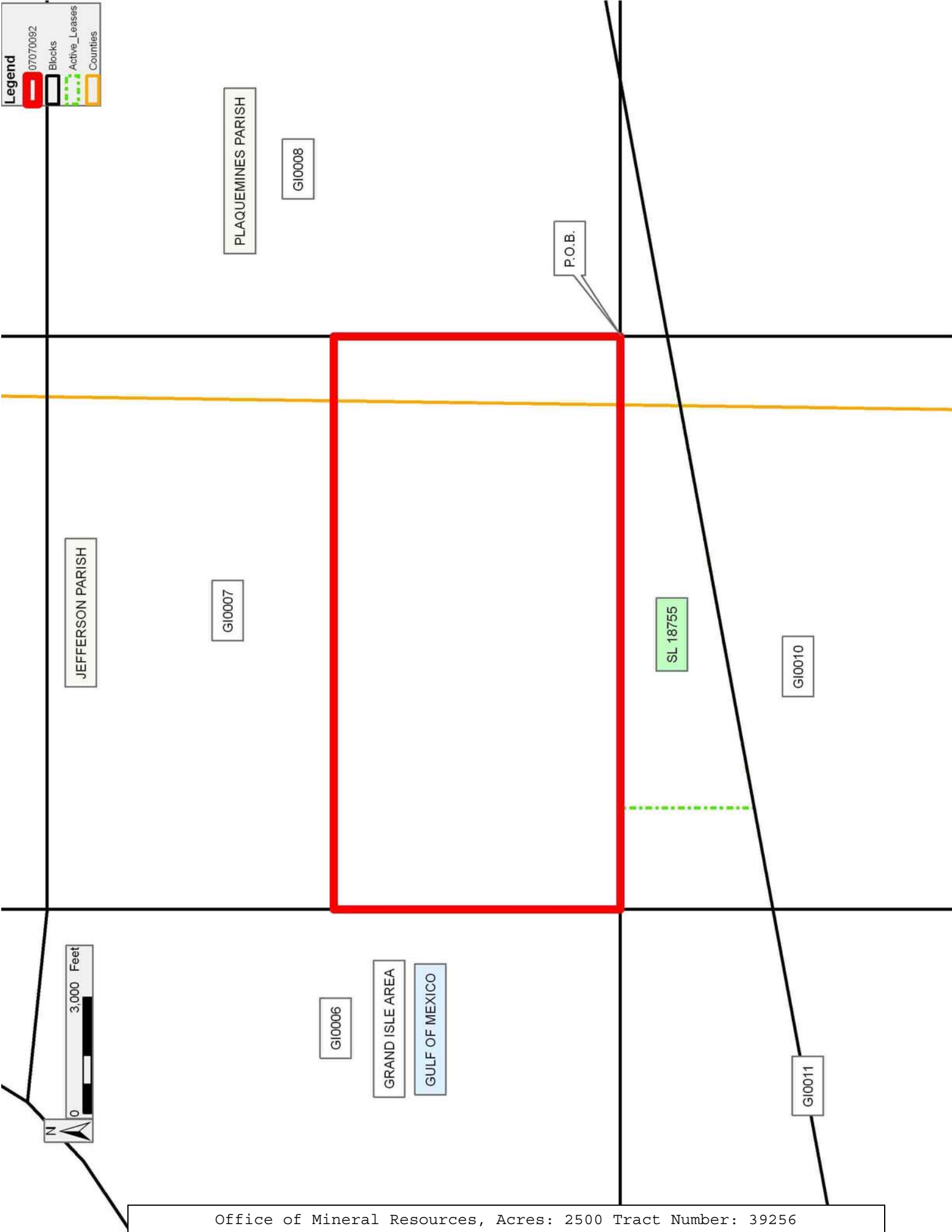
NOTE: It appears, according to our records, that a portion of this Tract is located within the restrictive safety fairway area as set out by the Corps of Engineers, U.S. Army and/or the restrictive anchorage area as set out by the U.S. Coast Guard.

Applicant: ALLEN & KIRMSE, LTD.

Bidder	Cash Payment	Price/ Acre	Rental	Oil	Gas	Other

Legend

- 07070092
- Blocks
- Active_Leases
- Counties



TRACT 39257 - Portion of Block 11, Grand Isle Area, Jefferson Parish, Louisiana

All of the lands now or formerly constituting the beds and bottoms of all water bodies of every nature and description the title of which vests in the State of Louisiana, together with all islands arising therein and other lands formed by accretion or by reliction, where allowed by law, excepting tax adjudicated lands, and not presently under mineral lease on July 11, 2007, situated in Jefferson Parish, Louisiana, and more particularly described as follows: Beginning at the Northwest corner of Block 11, Grand Isle Area, having Coordinates of X = 2,428,143.81 and Y = 200,293.43; thence East 10,758.04 feet along the North line of said Block 11 to a point having Coordinates of X = 2,438,901.85 and Y = 200,293.43; thence South 4,666.06 feet to a point on the Louisiana Coastline, as decreed by the Supreme Court of the United States, as determined by a Special Master appointed therein, in litigation styled *United States v. State of Louisiana et al No. 9 Original*, in 1975, having Coordinates of X = 2,438,901.85 and Y = 195,627.37; thence Southwesterly on a straight line, along said Louisiana Coastline, to a point of intersection with the West line of said Block 11 having Coordinates of X = 2,428,143.81 and Y = 193,646.48; thence North 6,646.95 feet along the West line of said Block 11 to point of beginning, containing approximately **1,396.99 acres**, all as more particularly outlined on a plat on file in the Office of Mineral Resources, Department of Natural Resources. All bearings, distances and coordinates are based on Louisiana Coordinate System of 1927, (North or South Zone), where applicable.

NOTE: The above description of the Tract nominated for lease has been provided and corrected, where required, exclusively by the nomination party. Any mineral lease selected from this Tract and awarded by the Louisiana State Mineral Board shall be without warranty of any kind, either express, implied, or statutory, including, but not limited to, the implied warranties of merchantability and fitness for a particular purpose. Should the mineral lease awarded by the Louisiana State Mineral Board be subsequently modified, cancelled or abrogated due to the existence of conflicting leases, operating agreements, private claims or other future obligations or conditions which may affect all or any portion of the leased Tract, it shall not relieve the Lessee of the obligation to pay any bonus due thereon to the Louisiana State Mineral Board, nor shall the Louisiana State Mineral Board be obligated to refund any consideration paid by the Lessor prior to such modification, cancellation, or abrogation, including, but not limited to, bonuses, rentals and royalties.

NOTE: The State of Louisiana does hereby reserve, and this lease shall be subject to, the imprescriptible right of surface use in the nature of a servitude in favor of the Department of Natural Resources, including its Offices and Commissions, for the sole purpose of implementing, constructing, servicing and maintaining approved coastal zone management and/or restoration projects. Utilization of any and all rights derived under this lease by the mineral lessee, its agents, successors or assigns,

shall not interfere with nor hinder the reasonable surface use by the Department of Natural Resources, its Offices or Commissions, as herein above reserved.

Applicant: ALLEN & KIRMSE, LTD.

Bidder	Cash Payment	Price/ Acre	Rental	Oil	Gas	Other

Legend

07070090

Blocks

JEFFERSON PARISH

GRAND ISLE AREA

GI0006



GI0005

P.O.B.

GI0012

GULF OF MEXICO

GI0011

GI0011