

**TRACT 39238 - St. Mary and Terrebonne Parishes, Louisiana**

All of the lands now or formerly constituting the beds and bottoms of all water bodies of every nature and description the title of which vests in the State of Louisiana, together with all islands arising therein and other lands formed by accretion or by reliction, where allowed by law, excepting tax adjudicated lands, and not presently under mineral lease on July 11, 2007, situated in St. Mary and Terrebonne Parishes, Louisiana, and more particularly described as follows: Beginning at a point having Coordinates of  $X = 2,022,488.40$  and  $Y = 317,136.54$ ; thence North approximately 5,497 feet to a point on the South boundary of State Lease No. 1337, as amended, having a Coordinate of  $X = 2,022,488.40$ ; thence Easterly approximately 7,080 feet along the South boundary of said State Lease No. 1337 to the Northwest Corner of State Lease No. 19037 having a Coordinate of  $X = 2,029,568.20$ ; thence South approximately 5,503 feet along the West boundary of said State Lease No. 19037 to its Southwest corner having Coordinates of  $X = 2,029,568.20$  and  $Y = 317,136.54$ ; thence South 571.54 feet to a point having Coordinates of  $X = 2,029,568.20$  and  $Y = 316,565.00$ ; thence West 1,583.44 feet to the Southeast corner of State Lease No. 15652, as amended, having Coordinates of  $X = 2,027,984.76$  and  $Y = 316,565.00$ ; thence along the boundaries of said State Lease No. 15652 the following courses: Northeasterly along an arc to the left having a radius of 1,940.31 feet and a center having Coordinates of  $X = 2,026,057.23$  and  $Y = 316,787.30$  to a point to having Coordinates of  $X = 2,027,990.77$  and  $Y = 316,949.20$ ; Northeasterly along an arc to the left having a radius of 9,058.01 feet and a center having Coordinates of  $X = 2,021,491.94$  and  $Y = 323,258.94$  to a point having Coordinates of  $X = 2,028,005.30$  and  $Y = 316,964.20$ ; Northeasterly along an arc to the left having a radius of 336.13 feet and a center having Coordinates of  $X = 2,027,796.52$  and  $Y = 317,227.63$  to a point having Coordinates of  $X = 2,028,132.33$  and  $Y = 317,212.88$ ; Northwesterly along an arc to the left having a radius of 1,308.87 feet and a center having Coordinates of  $X = 2,026,834.33$  and  $Y = 317,381.19$  to a point having Coordinates of  $X = 2,028,060.13$  and  $Y = 317,840.04$ ; Northwesterly along an arc to the left having a radius of 5,963.44 feet and a center having Coordinates of  $X = 2,022,667.87$  and  $Y = 315,293.25$  to a point having Coordinates of  $X = 2,027,328.38$  and  $Y = 319,013.77$ ; Northwesterly along an arc to the left having a radius of 1,200.67 feet and a center having Coordinates of  $X = 2,026,352.59$  and  $Y = 318,314.17$  to a point having Coordinates of  $X = 2,026,931.41$  and  $Y = 319,366.11$ ; Northwesterly along an arc to the left having a radius of 232.59 feet and a center having Coordinates of  $X = 2,026,811.98$  and  $Y = 319,166.52$  to a point having Coordinates of  $X = 2,026,735.99$  and  $Y = 319,386.35$ ; Southwesterly along an arc to the right having a radius of 215,229.64 feet and a center having Coordinates of  $X = 1,955,928.18$  and  $Y = 522,635.09$  to a point having Coordinates of  $X = 2,026,246.35$  and  $Y = 319,216.43$ ; Southwesterly along an arc to the left having a radius of 431.21 feet and a center having Coordinates of  $X = 2,026,388.22$  and  $Y = 318,809.23$  to a point having Coordinates of  $X = 2,026,025.82$  and  $Y = 319,042.91$ ; Southwesterly along an arc to the right having a radius of 4,976.99 feet and a center having Coordinates of  $X =$

2,021,749.59 and Y = 321,589.34 to a point having Coordinates of X = 2,025,552.71 and Y = 318,378.93; Southwesterly along an arc to the left having a radius of 2,663.16 feet and a center having Coordinates of X = 2,027,549.07 and Y = 316,616.27 to a point having Coordinates of X = 2,025,113.00 and Y = 317,692.37 and Southwesterly along an arc to the left having a radius of 576.75 feet and a center having Coordinates of X = 2,025,615.03 and Y = 317,408.46 to a point having Coordinates of X = 2,025,106.40 and Y = 317,136.54; thence West 2,618.00 feet to the point of beginning, containing approximately **525 acres**, all as more particularly outlined on a plat on file in the Office of Mineral Resources, Department of Natural Resources. All bearings, distances and coordinates are based on Louisiana Coordinate System of 1927, (North or South Zone), where applicable.

NOTE: The above description of the Tract nominated for lease has been provided and corrected, where required, exclusively by the nomination party. Any mineral lease selected from this Tract and awarded by the Louisiana State Mineral Board shall be without warranty of any kind, either express, implied, or statutory, including, but not limited to, the implied warranties of merchantability and fitness for a particular purpose. Should the mineral lease awarded by the Louisiana State Mineral Board be subsequently modified, cancelled or abrogated due to the existence of conflicting leases, operating agreements, private claims or other future obligations or conditions which may affect all or any portion of the leased Tract, it shall not relieve the Lessee of the obligation to pay any bonus due thereon to the Louisiana State Mineral Board, nor shall the Louisiana State Mineral Board be obligated to refund any consideration paid by the Lessor prior to such modification, cancellation, or abrogation, including, but not limited to, bonuses, rentals and royalties.

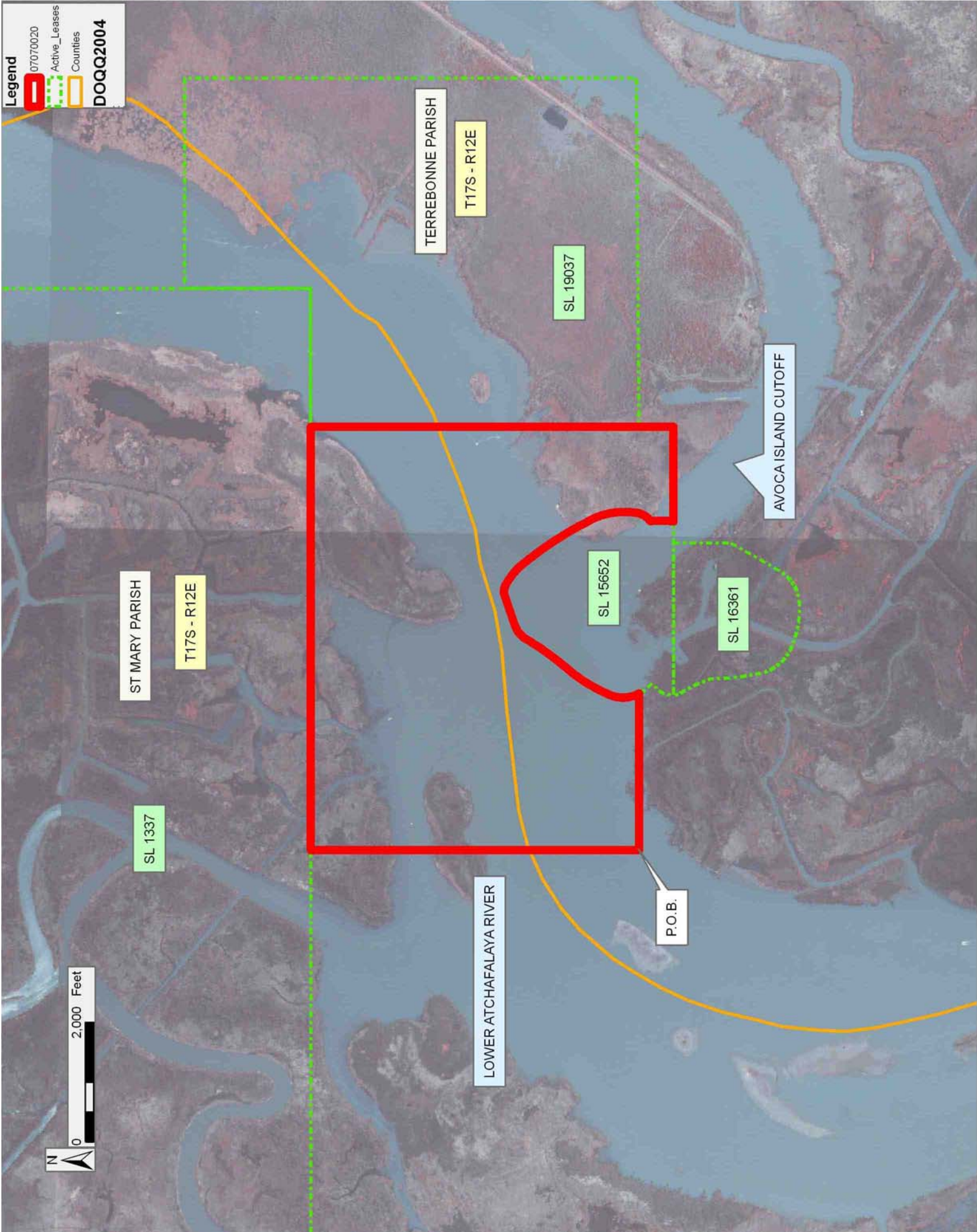
NOTE: The State of Louisiana does hereby reserve, and this lease shall be subject to, the imprescriptible right of surface use in the nature of a servitude in favor of the Department of Natural Resources, including its Offices and Commissions, for the sole purpose of implementing, constructing, servicing and maintaining approved coastal zone management and/or restoration projects. Utilization of any and all rights derived under this lease by the mineral lessee, its agents, successors or assigns, shall not interfere with nor hinder the reasonable surface use by the Department of Natural Resources, its Offices or Commissions, as herein above reserved.

Applicant: THEOPHILUS OIL, GAS & LAND SERVICES, LLC

Bidder	Cash Payment	Price/Acre	Rental	Oil	Gas	Other

**Legend**

- 07070020
- Active\_Leases
- Counties
- DOQQ2004**



**TRACT 39239 - Terrebonne Parish, Louisiana**

All of the lands now or formerly constituting the beds and bottoms of all water bodies of every nature and description the title of which vests in the State of Louisiana, together with all islands arising therein and other lands formed by accretion or by reliction, where allowed by law, excepting tax adjudicated lands, and not presently under mineral lease on July 11, 2007, situated in Terrebonne Parish, Louisiana, and more particularly described as follows: Beginning at a point having Coordinates of X = 2,022,488.40 and Y = 317,136.54; thence East 2,618.00 feet to a point on the Western boundary of State Lease No. 15652, as amended, having Coordinates of X = 2,025,106.40 and Y = 317,136.54; thence along the West boundary of said State Lease No. 15652 the following courses: Southeasterly along an arc to the left having a radius of 576.75 feet and a center having Coordinates of X = 2,025,615.02 and Y = 317,408.47 to a point having Coordinates of X = 2,025,188.81 and Y = 317,019.90; Southeasterly along an arc to the left having a radius of 30,819.19 feet and a center having Coordinates of X = 2,048,731.26 and Y = 336,908.98 to a point having Coordinates of X = 2,025,273.64 and Y = 316,919.92; Southwesterly along an arc to the right having a radius of 6,742.41 feet and a center having Coordinates of X = 2,020,875.06 and Y = 322,029.97 to a point having Coordinates of X = 2,025,201.99 and Y = 316,859.11 and Southwesterly along an arc to the left having a radius of 358.25 feet and a center having Coordinates of X = 2,025,435.09 and Y = 316,587.07 to the Northwest corner of State Lease No. 16361, as amended, having Coordinates of X = 2,025,077.52 and Y = 316,565.00; thence along the boundary of said State Lease No. 16361 the following courses: Southeasterly along an arc to the left having a radius of 358.25 feet and a center having Coordinates of X = 2,025,435.09 and Y = 316,587.08 to a point having Coordinates of X = 2,025,097.46 and Y = 316,467.29; Southeasterly along an arc to the right having a radius of 2,531.61 feet and a center having Coordinates of X = 2,022,961.41 and Y = 315,108.49 to a point having Coordinates of X = 2,025,351.09 and Y = 315,944.24; Southeasterly along an arc to the left having a radius of 3,835.00 feet and a center having Coordinates of X = 2,029,186.08 and Y = 315,954.11 to a point having Coordinates of X = 2,025,466.11 and Y = 315,021.87; Southeasterly along an arc to the left having a radius of 747.90 feet and a center having Coordinates of X = 2,026,166.29 and Y = 315,284.74 to a point having Coordinates of X = 2,025,900.38 and Y = 314,585.71; Southeasterly along an arc to the left having a radius of 1,608.05 feet and a center having Coordinates of X = 2,026,527.53 and Y = 316,066.42 to a point having Coordinates of X = 2,026,597.18 and Y = 314,459.88; Northeasterly along an arc to the left having a radius of 679.23 feet and a center having Coordinates of X = 2,026,575.66 and Y = 315,138.77 to a point having Coordinates of X = 2,027,140.57 and Y = 314,761.63 and Northeasterly along an arc to the left having a radius of 29,845.15 feet and a center having Coordinates of X = 2,001,477.51 and Y = 329,997.78 to a point having Coordinates of X = 2,027,622.80 and Y = 315,604.84; thence South 6,805.74 feet to a point having Coordinates of X = 2,027,622.80 and Y = 308,799.10; thence West 5,134.40 feet to a point having Coordinates of X = 2,022,488.40 and Y =

308,799.10; thence North 8,337.44 feet to the point of beginning, containing approximately **23 acres**, all as more particularly outlined on a plat on file in the Office of Mineral Resources, Department of Natural Resources. All bearings, distances and coordinates are based on Louisiana Coordinate System of 1927, (North or South Zone), where applicable.

NOTE: The above description of the Tract nominated for lease has been provided and corrected, where required, exclusively by the nomination party. Any mineral lease selected from this Tract and awarded by the Louisiana State Mineral Board shall be without warranty of any kind, either express, implied, or statutory, including, but not limited to, the implied warranties of merchantability and fitness for a particular purpose. Should the mineral lease awarded by the Louisiana State Mineral Board be subsequently modified, cancelled or abrogated due to the existence of conflicting leases, operating agreements, private claims or other future obligations or conditions which may affect all or any portion of the leased Tract, it shall not relieve the Lessee of the obligation to pay any bonus due thereon to the Louisiana State Mineral Board, nor shall the Louisiana State Mineral Board be obligated to refund any consideration paid by the Lessor prior to such modification, cancellation, or abrogation, including, but not limited to, bonuses, rentals and royalties.

NOTE: The State of Louisiana does hereby reserve, and this lease shall be subject to, the imprescriptible right of surface use in the nature of a servitude in favor of the Department of Natural Resources, including its Offices and Commissions, for the sole purpose of implementing, constructing, servicing and maintaining approved coastal zone management and/or restoration projects. Utilization of any and all rights derived under this lease by the mineral lessee, its agents, successors or assigns, shall not interfere with nor hinder the reasonable surface use by the Department of Natural Resources, its Offices or Commissions, as herein above reserved.

Applicant: THEOPHILUS OIL, GAS & LAND SERVICES, LLC

Bidder	Cash Payment	Price/Acre	Rental	Oil	Gas	Other

TERREBONNE PARISH

T17S - R12E

T18S - R12E

CUTOFF BAYOU

SL 15652

SL 16361

P.O.B.

DEER ISLAND BAYOU

0 2,000 Feet

N

ST MARY PARISH

T17S - R12E

LOWER ATCHAFALAYA RIVER

**TRACT 39240 - Terrebonne Parish, Louisiana**

All of the lands now or formerly constituting the beds and bottoms of all water bodies of every nature and description the title of which vests in the State of Louisiana, together with all islands arising therein and other lands formed by accretion or by reliction, where allowed by law, excepting tax adjudicated lands, and not presently under mineral lease on July 11, 2007, situated in Terrebonne Parish, Louisiana, and more particularly described as follows: Beginning at the Southwest corner of State Lease No. 19037 having Coordinates of X = 2,029,568.20 and Y = 317,136.54; thence North 89 degrees 31 minutes 15 seconds East 3,576.83 feet along the South boundary of said State Lease No. 19037 to a point having Coordinates of X = 2,033,144.90 and Y = 317,166.45; thence South 8,367.35 feet to a point having Coordinates of X = 2,033,144.90 and Y = 308,799.10; thence West 5,522.10 feet to a point having Coordinates of X = 2,027,622.80 and Y = 308,799.10; thence North 6,805.74 feet to a corner located on the East boundary of State Lease No. 16361, as amended, having Coordinates of X = 2,027,622.80 and Y = 315,604.84; thence North 960.16 feet along the East boundary of said State Lease No. 16361 to its Northeast corner, also being a point on the South boundary of State Lease No. 15652, as amended, having Coordinates of X = 2,027,622.80 and Y = 316,565.00; thence East 361.96 feet along the South boundary of said State Lease No. 15652 to its Southeast corner having Coordinates of X = 2,027,984.76 and Y = 316,565.00; thence East 1,583.44 feet to a point having Coordinates of X = 2,029,568.20 and Y = 316,565.00; thence North 571.54 feet to the point of beginning, containing approximately **31 acres**, all as more particularly outlined on a plat on file in the Office of Mineral Resources, Department of Natural Resources. All bearings, distances and coordinates are based on Louisiana Coordinate System of 1927, (North or South Zone), where applicable.

NOTE: The above description of the Tract nominated for lease has been provided and corrected, where required, exclusively by the nomination party. Any mineral lease selected from this Tract and awarded by the Louisiana State Mineral Board shall be without warranty of any kind, either express, implied, or statutory, including, but not limited to, the implied warranties of merchantability and fitness for a particular purpose. Should the mineral lease awarded by the Louisiana State Mineral Board be subsequently modified, cancelled or abrogated due to the existence of conflicting leases, operating agreements, private claims or other future obligations or conditions which may affect all or any portion of the leased Tract, it shall not relieve the Lessee of the obligation to pay any bonus due thereon to the Louisiana State Mineral Board, nor shall the Louisiana State Mineral Board be obligated to refund any consideration paid by the Lessor prior to such modification, cancellation, or abrogation, including, but not limited to, bonuses, rentals and royalties.

NOTE: The State of Louisiana does hereby reserve, and this lease shall be subject to, the imprescriptible right of surface use in the nature of a servitude in favor of the Department of Natural Resources, including its

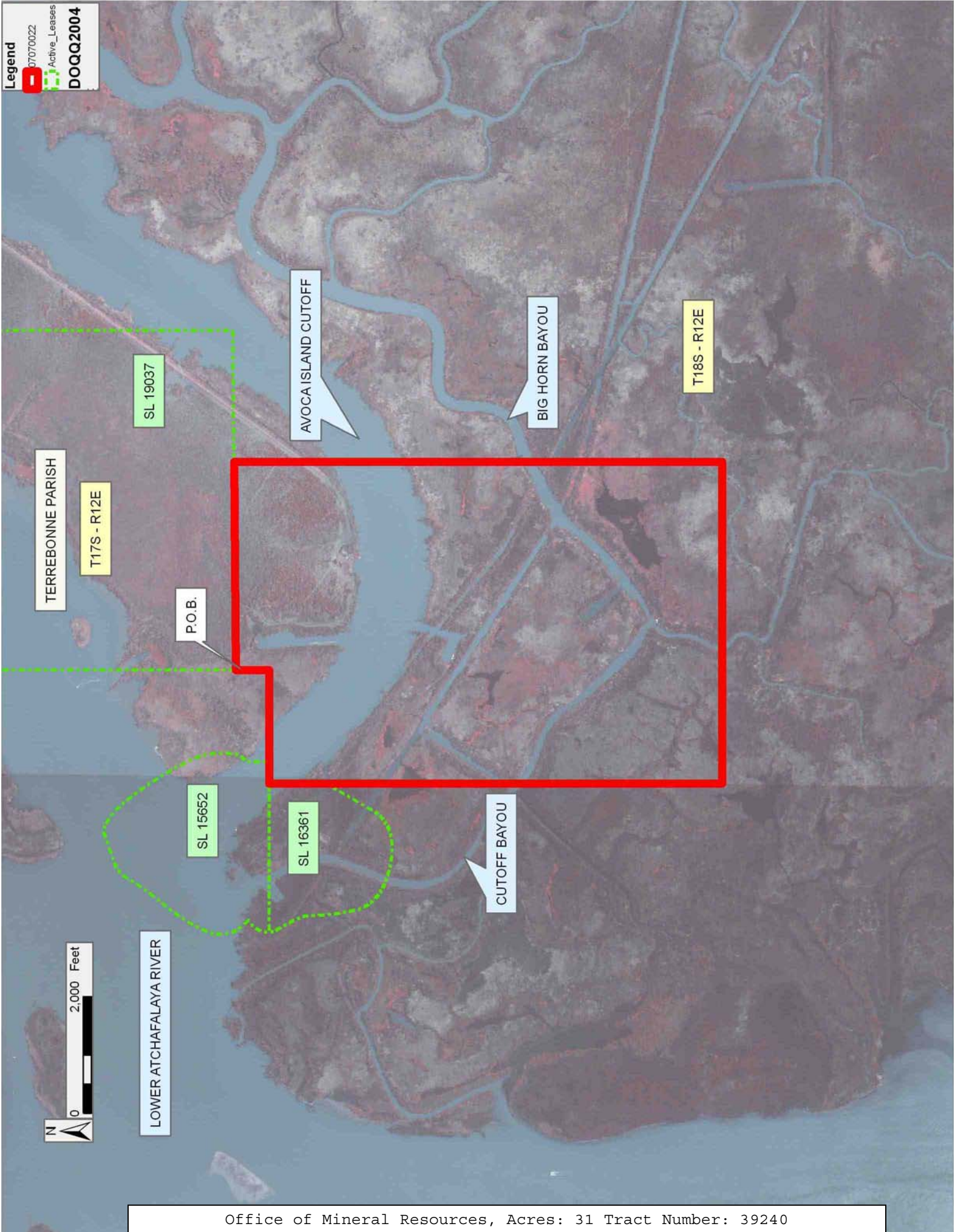


Offices and Commissions, for the sole purpose of implementing, constructing, servicing and maintaining approved coastal zone management and/or restoration projects. Utilization of any and all rights derived under this lease by the mineral lessee, its agents, successors or assigns, shall not interfere with nor hinder the reasonable surface use by the Department of Natural Resources, its Offices or Commissions, as herein above reserved.

Applicant: THEOPHILUS OIL, GAS & LAND SERVICES, LLC

Bidder	Cash Payment	Price/Acre	Rental	Oil	Gas	Other

**Legend**  
07070022  
Active\_Leases  
**DOQQ2004**



**TRACT 39241 - St. Mary and Terrebonne Parishes, Louisiana**

All of the lands now or formerly constituting the beds and bottoms of all water bodies of every nature and description the title of which vests in the State of Louisiana, together with all islands arising therein and other lands formed by accretion or by reliction, where allowed by law, excepting tax adjudicated lands, and not presently under mineral lease on July 11, 2007, situated in St. Mary and Terrebonne Parishes, Louisiana, and more particularly described as follows: Beginning at a point having Coordinates of X = 2,014,566.70 and Y = 317,136.54; thence East 7,921.70 feet to a point having Coordinates of X = 2,022,488.40 and Y = 317,136.54; thence South 8,337.44 feet to a point having Coordinates of X = 2,022,488.40 and Y = 308,799.10; thence West 7,921.70 feet to a point having Coordinates of X = 2,014,566.70 and Y = 308,799.10; thence North 8,337.44 feet to the point of beginning, containing approximately **905 acres**, all as more particularly outlined on a plat on file in the Office of Mineral Resources, Department of Natural Resources. All bearings, distances and coordinates are based on Louisiana Coordinate System of 1927, (North or South Zone), where applicable.

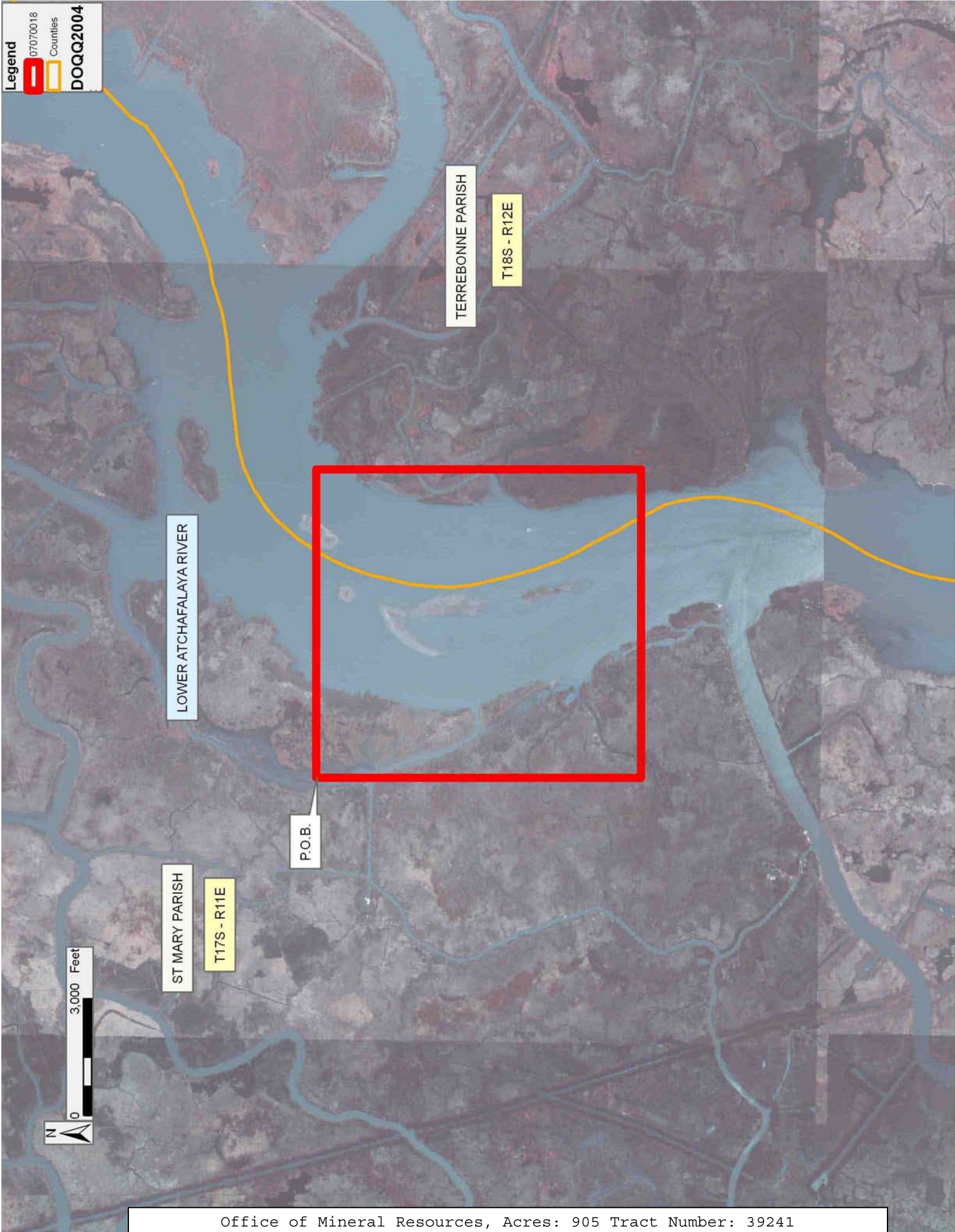
NOTE: The above description of the Tract nominated for lease has been provided and corrected, where required, exclusively by the nomination party. Any mineral lease selected from this Tract and awarded by the Louisiana State Mineral Board shall be without warranty of any kind, either express, implied, or statutory, including, but not limited to, the implied warranties of merchantability and fitness for a particular purpose. Should the mineral lease awarded by the Louisiana State Mineral Board be subsequently modified, cancelled or abrogated due to the existence of conflicting leases, operating agreements, private claims or other future obligations or conditions which may affect all or any portion of the leased Tract, it shall not relieve the Lessee of the obligation to pay any bonus due thereon to the Louisiana State Mineral Board, nor shall the Louisiana State Mineral Board be obligated to refund any consideration paid by the Lessor prior to such modification, cancellation, or abrogation, including, but not limited to, bonuses, rentals and royalties.

NOTE: The State of Louisiana does hereby reserve, and this lease shall be subject to, the imprescriptible right of surface use in the nature of a servitude in favor of the Department of Natural Resources, including its Offices and Commissions, for the sole purpose of implementing, constructing, servicing and maintaining approved coastal zone management and/or restoration projects. Utilization of any and all rights derived under this lease by the mineral lessee, its agents, successors or assigns, shall not interfere with nor hinder the reasonable surface use by the Department of Natural Resources, its Offices or Commissions, as herein above reserved.

Applicant: THEOPHILUS OIL, GAS & LAND SERVICES, LLC

Bidder	Cash Payment	Price/Acre	Rental	Oil	Gas	Other

**Legend**  
07070018  
Counties  
DOQQ2004



LOWER ATCHAFALAYA RIVER

TERREBONNE PARISH

T18S - R12E

ST MARY PARISH

T17S - R11E

P.O.B.



**TRACT 39242 - St. Mary and Terrebonne Parishes, Louisiana**

All of the lands now or formerly constituting the beds and bottoms of all water bodies of every nature and description the title of which vests in the State of Louisiana, together with all islands arising therein and other lands formed by accretion or by reliction, where allowed by law, excepting tax adjudicated lands, and not presently under mineral lease on July 11, 2007, situated in St. Mary and Terrebonne Parishes, Louisiana, and more particularly described as follows: Beginning at a point having Coordinates of X = 2,014,566.70 and Y = 308,799.10; thence East 7,921.70 feet to a point having Coordinates of X = 2,022,488.40 and Y = 308,799.10; thence South 5,323.40 feet to a point having Coordinates of X = 2,022,488.40 and Y = 303,475.70; thence West 7,921.70 feet to a point having Coordinates of X = 2,014,566.70 and Y = 303,475.70; thence North 5,323.40 feet to the point of beginning, containing approximately **388 acres**, all as more particularly outlined on a plat on file in the Office of Mineral Resources, Department of Natural Resources. All bearings, distances and coordinates are based on Louisiana Coordinate System of 1927, (North or South Zone), where applicable.

NOTE: The above description of the Tract nominated for lease has been provided and corrected, where required, exclusively by the nomination party. Any mineral lease selected from this Tract and awarded by the Louisiana State Mineral Board shall be without warranty of any kind, either express, implied, or statutory, including, but not limited to, the implied warranties of merchantability and fitness for a particular purpose. Should the mineral lease awarded by the Louisiana State Mineral Board be subsequently modified, cancelled or abrogated due to the existence of conflicting leases, operating agreements, private claims or other future obligations or conditions which may affect all or any portion of the leased Tract, it shall not relieve the Lessee of the obligation to pay any bonus due thereon to the Louisiana State Mineral Board, nor shall the Louisiana State Mineral Board be obligated to refund any consideration paid by the Lessor prior to such modification, cancellation, or abrogation, including, but not limited to, bonuses, rentals and royalties.

NOTE: The State of Louisiana does hereby reserve, and this lease shall be subject to, the imprescriptible right of surface use in the nature of a servitude in favor of the Department of Natural Resources, including its Offices and Commissions, for the sole purpose of implementing, constructing, servicing and maintaining approved coastal zone management and/or restoration projects. Utilization of any and all rights derived under this lease by the mineral lessee, its agents, successors or assigns, shall not interfere with nor hinder the reasonable surface use by the Department of Natural Resources, its Offices or Commissions, as herein above reserved.

Applicant: THEOPHILUS OIL, GAS & LAND SERVICES, LLC

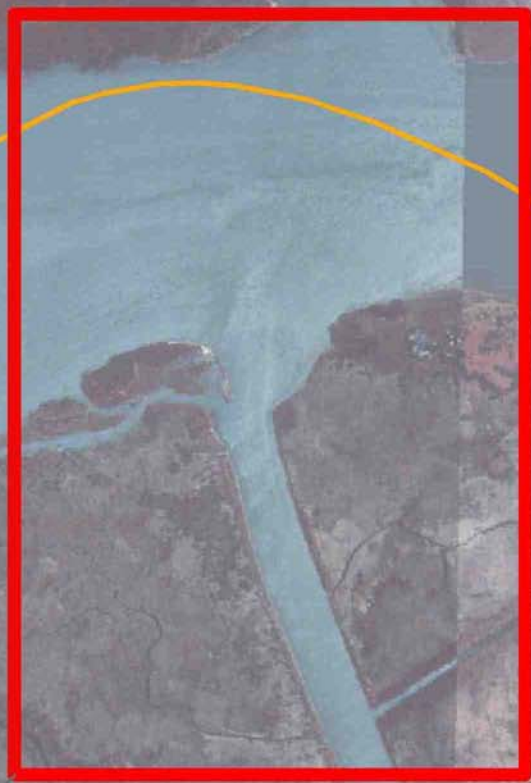
Bidder	Cash Payment	Price/Acre	Rental	Oil	Gas	Other

**Legend**  
07070019  
Counties  
DOQQ2004

TERREBONNE PARISH

T18S - R12E

LOWER ATCHAFALAYA RIVER



ST MARY PARISH

T17S - R11E

P.O.B.

SHELL ISLAND PASS

0 2,000 Feet  
N



**TRACT 39243 - Portion of Block 49, Breton Sound Area, Plaquemines Parish, Louisiana**

All of the lands now or formerly constituting the beds and bottoms of all water bodies of every nature and description the title of which vests in the State of Louisiana, together with all islands arising therein and other lands formed by accretion or by reliction, where allowed by law, excepting tax adjudicated lands, and not presently under mineral lease on July 11, 2007, situated in Plaquemines Parish, Louisiana, and more particularly described as follows: Beginning at a point on the West line of Block 49, Breton Sound Area, having Coordinates of X = 2,635,350.00 and Y = 290,472.00; thence East 3,806.00 feet to a point on the West boundary of State Lease No. 17241 having Coordinates of X = 2,639,156.00 and Y = 290,472.00; thence along the boundary of said State Lease No. 17241 the following courses: South 1,920.00 feet to a point having Coordinates of X = 2,639,156.00 and Y = 288,552.00; East 3,525.00 feet to a point having Coordinates of X = 2,642,681.00 and Y = 288,552.00 and North 1,920.00 feet to a point having Coordinates of X = 2,642,681.00 and Y = 290,472.00; thence East 4,990.00 feet to a point on the West boundary of State Lease No. 17239 having Coordinates of X = 2,647,671.00 and Y = 290,472.00; thence along the boundary of said State Lease No. 17239 the following courses: South 1,289.00 feet to a point having Coordinates of X = 2,647,671.00 and Y = 289,183.00 and East 2,429.00 feet to its Southeast corner, also being a point on the East line of said Block 49 having Coordinates of X = 2,650,100.00 and Y = 289,183.00; thence South 7,120.00 feet along the East line of said Block 49 to a point having Coordinates of X = 2,650,100.00 and Y = 282,063.00; thence West 7,000.00 feet to the Easternmost Southeast corner of State Lease No. 18625 having Coordinates of X = 2,643,100.00 and Y = 282,063.00; thence along the boundary of said State Lease No. 18625 the following courses: North 737.00 feet to a point having Coordinates of X = 2,643,100.00 and Y = 282,800.00; North 55 degrees 41 minutes 32 seconds West 2,058.06 feet to a point having Coordinates of X = 2,641,400.00 and Y = 283,960.00 and West 4,250.00 feet to its Northwest corner, also being a point on the East boundary of State Lease No. 18164 having Coordinates of X = 2,637,150.00 and Y = 283,960.00; thence along the boundary of said State Lease No. 18164 the following courses: North 627.00 feet to a point having Coordinates of X = 2,637,150.00 and Y = 284,587.00 and West 1,800.00 feet to its Northwest corner, also being a point on the West line of said Block 49 having Coordinates of X = 2,635,350.00 and Y = 284,587.00; thence North 5,885.00 feet along the West line of said Block 49 to the point of beginning, **LESS AND EXCEPT** all of State Lease No. 18623 and State Lease No. 18998, both of which lie within the above described tract, said leases boundaries being more fully described as follows: Commencing at a point, being the Southeast corner of the above described nominated tract, having Coordinates of X = 2,650,100.00 and Y = 282,063.00; thence North 48 degrees 54 minutes 50 seconds West 6,920.33 feet to a point within Block 49, Breton Sound Area, also being the Southernmost Southeast corner of said State Lease No. 18623 having Coordinates of X = 2,644,884.00 and Y = 286,611.00; thence along the boundaries of said State Lease No. 18623 and

said State Lease No. 18998 the following courses: West 1,258.00 feet to a point having Coordinates of X = 2,643,626.00 and Y = 286,611.00; North 1,573.00 feet to a point having Coordinates of X = 2,643,626.00 and Y = 288,184.00; North 53 degrees 19 minutes 35 seconds East 1,225.61 feet to a point having Coordinates of X = 2,644,609.00 and Y = 288,916.00; North 54 degrees 15 minutes 30 seconds East 1,076.81 feet to a point having Coordinates of X = 2,645,483.00 and Y = 289,545.00; East 1,154.00 feet to a point having Coordinates of X = 2,646,637.00 and Y = 289,545.00; South 11 degrees 18 minutes 53 seconds East 2,421.05 feet to a point having Coordinates of X = 2,647,112.00 and Y = 287,171.00; West 2,228.00 feet to a point having Coordinates of X = 2,644,884.00 and Y = 287,171.00 and South 560.00 feet to the Southernmost Southeast corner of said State Lease No. 18623; the nominated tract containing approximately **2,114.92 acres**, all as more particularly outlined on a plat on file in the Office of Mineral Resources, Department of Natural Resources. All bearings, distances and coordinates are based on Louisiana Coordinate System of 1927, (North or South Zone), where applicable.

NOTE: The above description of the Tract nominated for lease has been provided and corrected, where required, exclusively by the nomination party. Any mineral lease selected from this Tract and awarded by the Louisiana State Mineral Board shall be without warranty of any kind, either express, implied, or statutory, including, but not limited to, the implied warranties of merchantability and fitness for a particular purpose. Should the mineral lease awarded by the Louisiana State Mineral Board be subsequently modified, cancelled or abrogated due to the existence of conflicting leases, operating agreements, private claims or other future obligations or conditions which may affect all or any portion of the leased Tract, it shall not relieve the Lessee of the obligation to pay any bonus due thereon to the Louisiana State Mineral Board, nor shall the Louisiana State Mineral Board be obligated to refund any consideration paid by the Lessor prior to such modification, cancellation, or abrogation, including, but not limited to, bonuses, rentals and royalties.

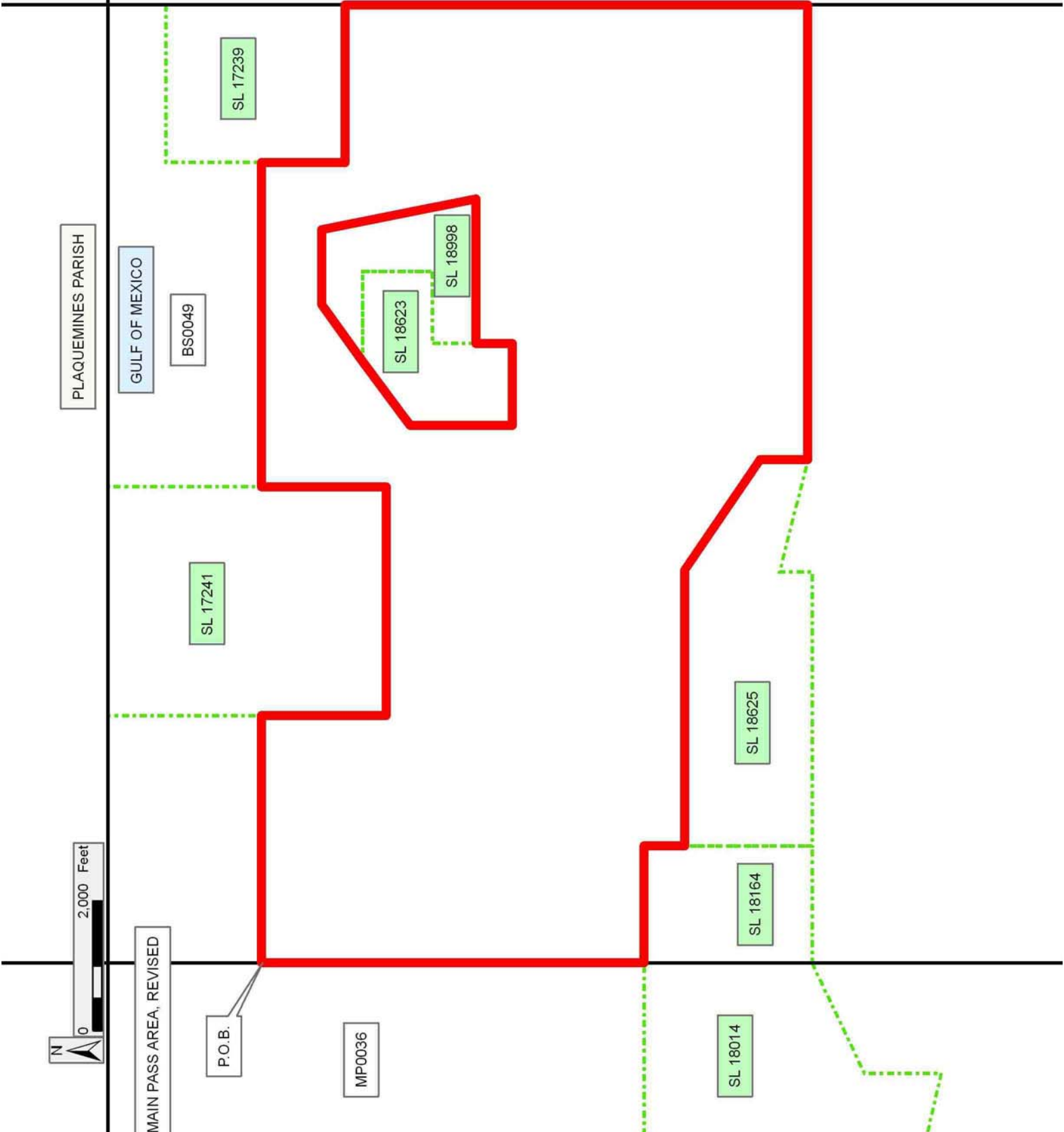
NOTE: The State of Louisiana does hereby reserve, and this lease shall be subject to, the imprescriptible right of surface use in the nature of a servitude in favor of the Department of Natural Resources, including its Offices and Commissions, for the sole purpose of implementing, constructing, servicing and maintaining approved coastal zone management and/or restoration projects. Utilization of any and all rights derived under this lease by the mineral lessee, its agents, successors or assigns, shall not interfere with nor hinder the reasonable surface use by the Department of Natural Resources, its Offices or Commissions, as herein above reserved.

Applicant: CYPRESS ENERGY CORPORATION

Bidder	Cash Payment	Price/Acre	Rental	Oil	Gas	Other

**Legend**

- 07070068
- Blocks
- Active\_Leases



**TRACT 39244 - Portion of Block 36, Main Pass Area, Revised, Plaquemines Parish, Louisiana**

All of the lands now or formerly constituting the beds and bottoms of all water bodies of every nature and description the title of which vests in the State of Louisiana, together with all islands arising therein and other lands formed by accretion or by reliction, where allowed by law, excepting tax adjudicated lands, and not presently under mineral lease on July 11, 2007, situated in Plaquemines Parish, Louisiana, and more particularly described as follows: Beginning at a point on the East boundary of State Lease No. 1961, as amended, also being a point on the West line of Block 36, Main Pass Area, Revised, having Coordinates of X = 2,620,600.00 and Y = 290,096.08; thence East 14,750.00 feet to a point on the East line of said Block 36 having Coordinates of X = 2,635,350.00 and Y = 290,096.08; thence South 5,509.08 feet along the East line of said Block 36 to the Northeast corner of State Lease No. 18014, as amended, having Coordinates of X = 2,635,350.00 and Y = 284,587.00; thence along the boundary of said State Lease No. 18014 the following courses: West 4,941.00 feet to a point having Coordinates of X = 2,630,409.00 and Y = 284,587.00 and South 2,587.00 feet to a point having Coordinates of X = 2,630,409.00 and Y = 282,000.00; thence West 9,809.00 feet to a point on the West line of said Block 36 having Coordinates of X = 2,620,600.00 and Y = 282,000.00; thence North 3,445.80 feet along the West line of said Block 36 to the Southeast corner of said State Lease No. 1961 having Coordinates of X = 2,620,600.00 and Y = 285,445.80; thence North 4,650.28 feet along the East boundary of said State Lease No. 1961 to the point of beginning, containing approximately **2,448.00 acres**, all as more particularly outlined on a plat on file in the Office of Mineral Resources, Department of Natural Resources. All bearings, distances and coordinates are based on Louisiana Coordinate System of 1927, (North or South Zone), where applicable.

NOTE: The above description of the Tract nominated for lease has been provided and corrected, where required, exclusively by the nomination party. Any mineral lease selected from this Tract and awarded by the Louisiana State Mineral Board shall be without warranty of any kind, either express, implied, or statutory, including, but not limited to, the implied warranties of merchantability and fitness for a particular purpose. Should the mineral lease awarded by the Louisiana State Mineral Board be subsequently modified, cancelled or abrogated due to the existence of conflicting leases, operating agreements, private claims or other future obligations or conditions which may affect all or any portion of the leased Tract, it shall not relieve the Lessee of the obligation to pay any bonus due thereon to the Louisiana State Mineral Board, nor shall the Louisiana State Mineral Board be obligated to refund any consideration paid by the Lessor prior to such modification, cancellation, or abrogation, including, but not limited to, bonuses, rentals and royalties.

NOTE: The State of Louisiana does hereby reserve, and this lease shall be subject to, the imprescriptible right of surface use in the nature of a

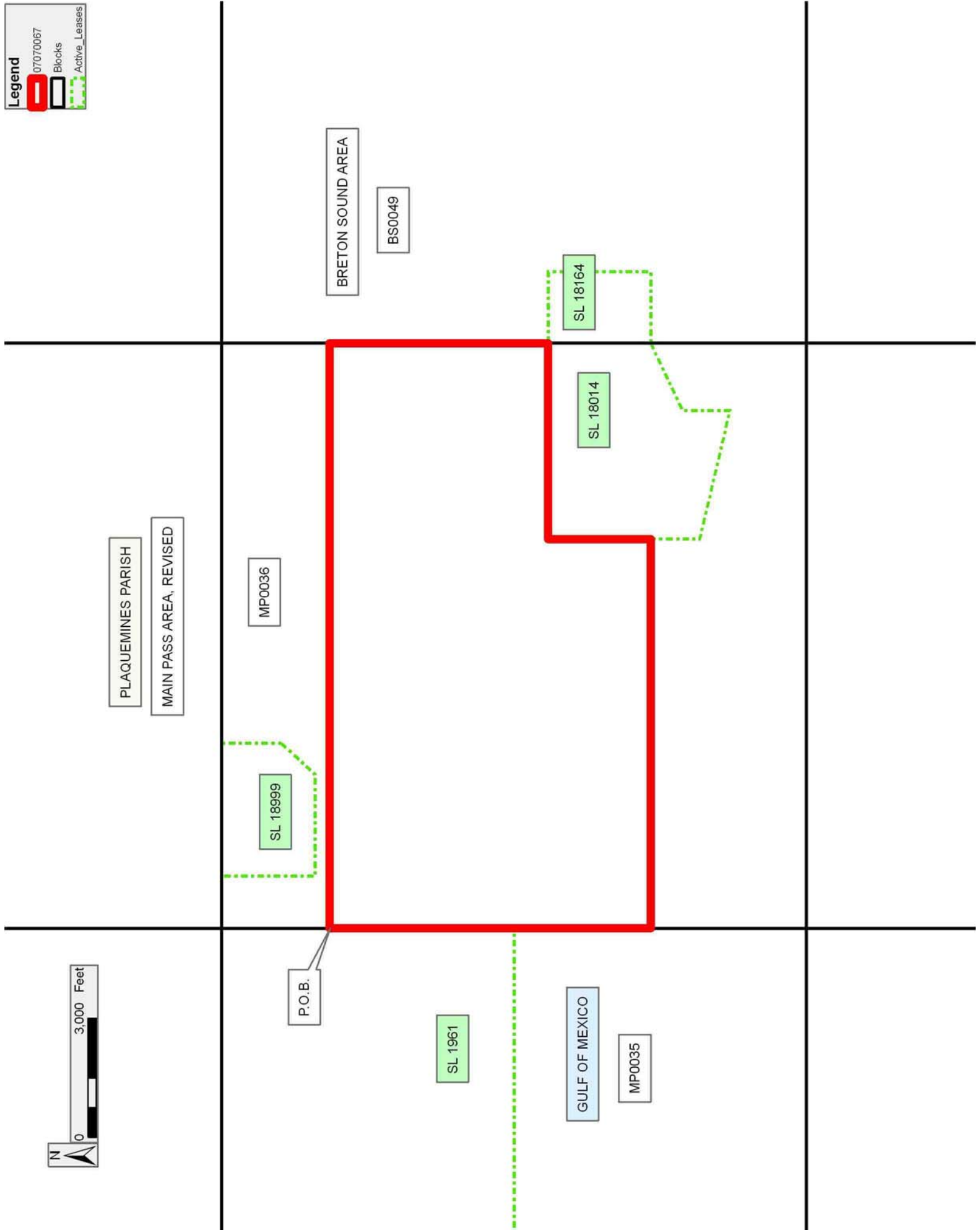
servitude in favor of the Department of Natural Resources, including its Offices and Commissions, for the sole purpose of implementing, constructing, servicing and maintaining approved coastal zone management and/or restoration projects. Utilization of any and all rights derived under this lease by the mineral lessee, its agents, successors or assigns, shall not interfere with nor hinder the reasonable surface use by the Department of Natural Resources, its Offices or Commissions, as herein above reserved.

Applicant: CYPRESS ENERGY CORPORATION

Bidder	Cash Payment	Price/Acre	Rental	Oil	Gas	Other

**Legend**

- 07070067
- Blocks
- Active\_Leases



**TRACT 39245 - Portion of Blocks 50, and 51, Breton Sound Area, Plaquemines Parish, Louisiana**

All of the lands now or formerly constituting the beds and bottoms of all water bodies of every nature and description the title of which vests in the State of Louisiana, together with all islands arising therein and other lands formed by accretion or by reliction, where allowed by law, excepting tax adjudicated lands, and not presently under mineral lease on July 11, 2007, situated in Plaquemines Parish, Louisiana, and more particularly described as follows: Beginning at a point on the West line of Block 50, Breton Sound Area, having Coordinates of X = 2,650,100.00 and Y = 285,453.16; thence East 14,751.12 feet to a point on the East line of said Block 50 having Coordinates of X = 2,664,851.12 and Y = 285,453.16; thence South 7,373.16 feet along the East line of said Block 50 to its Southeast corner having Coordinates of X = 2,664,851.12 and Y = 278,080.00; thence West 10,501.12 feet along the South line of said Block 50 to the Southeast corner of State Lease No. 16393 having Coordinates of X = 2,654,350.00 and Y = 278,080.00; thence along the boundary of said State Lease No. 16393 the following courses: North 2,000.00 feet to a point having Coordinates of X = 2,654,350.00 and Y = 280,080.00; West 3,800.00 feet to a point having Coordinates of X = 2,650,550.00 and Y = 280,080.00 and South 2,000.00 feet to its Southwest corner, also being a point on the South line of said Block 50 having Coordinates of X = 2,650,550.00 and Y = 278,080.00; thence West 450.00 feet along the South line of said Block 50 to its Southwest corner having Coordinates of X = 2,650,100.00 and Y = 278,080.00; thence North 7,373.16 feet along the West line of said Block 50 to the point of beginning, **LESS AND EXCEPT** all of State Lease No. 18578, which lies within the above described tract, being more fully described as follows: Commencing at the point of beginning of the above described nominated tract having Coordinates of X = 2,650,100.00 and Y = 285,453.16; thence South 75 degrees 50 minutes 11 seconds East 9,224.42 feet to a point within Block 50, Breton Sound Area, also being the Northernmost corner of said State Lease No. 18578 having Coordinates of X = 2,659,044.00 and Y = 283,196.00; thence along the boundary of said State Lease No. 18578 the following courses: South 44 degrees 13 minutes 54 seconds East 1,476.57 feet to a point having Coordinates of X = 2,660,074.00 and Y = 282,138.00; South 06 degrees 26 minutes 10 seconds East 3,960.96 feet to a point having Coordinates of X = 2,660,518.00 and Y = 278,202.00; North 86 degrees 47 minutes 28 seconds West 1,750.75 feet to a point having Coordinates of X = 2,658,770.00 and Y = 278,300.00; North 44 degrees 27 minutes 52 seconds West 2,118.58 feet to a point having Coordinates of X = 2,657,286.00 and Y = 279,812.00 and North 27 degrees 27 minutes 07 seconds East 3,813.40 feet to its point of beginning, the nominated tract containing approximately **2,094.53 acres**, all as more particularly outlined on a plat on file in the Office of Mineral Resources, Department of Natural Resources. All bearings, distances and coordinates are based on Louisiana Coordinate System of 1927, (North or South Zone), where applicable.



NOTE: The above description of the Tract nominated for lease has been provided and corrected, where required, exclusively by the nomination party. Any mineral lease selected from this Tract and awarded by the Louisiana State Mineral Board shall be without warranty of any kind, either express, implied, or statutory, including, but not limited to, the implied warranties of merchantability and fitness for a particular purpose. Should the mineral lease awarded by the Louisiana State Mineral Board be subsequently modified, cancelled or abrogated due to the existence of conflicting leases, operating agreements, private claims or other future obligations or conditions which may affect all or any portion of the leased Tract, it shall not relieve the Lessee of the obligation to pay any bonus due thereon to the Louisiana State Mineral Board, nor shall the Louisiana State Mineral Board be obligated to refund any consideration paid by the Lessor prior to such modification, cancellation, or abrogation, including, but not limited to, bonuses, rentals and royalties.

NOTE: The State of Louisiana does hereby reserve, and this lease shall be subject to, the imprescriptible right of surface use in the nature of a servitude in favor of the Department of Natural Resources, including its Offices and Commissions, for the sole purpose of implementing, constructing, servicing and maintaining approved coastal zone management and/or restoration projects. Utilization of any and all rights derived under this lease by the mineral lessee, its agents, successors or assigns, shall not interfere with nor hinder the reasonable surface use by the Department of Natural Resources, its Offices or Commissions, as herein above reserved.

Applicant: CYPRESS ENERGY CORPORATION

Bidder	Cash Payment	Price/Acre	Rental	Oil	Gas	Other

**Legend**

- 07070069
- Blocks
- Active\_Leases

PLAQUEMINES PARISH

BRETON SOUND AREA

BS0050

BS0051

MAIN PASS AREA, REVISED

MP0047

SL 18578

SL 16393

SL 16392

P.O.B.

BS0049

GULF OF MEXICO



**TRACT 39246 - Portion of Blocks 35, 36, 49, and 50, Main Pass Area, Revised, Plaquemines Parish, Louisiana**

All of the lands now or formerly constituting the beds and bottoms of all water bodies of every nature and description the title of which vests in the State of Louisiana, together with all islands arising therein and other lands formed by accretion or by reliction, where allowed by law, excepting tax adjudicated lands, and not presently under mineral lease on July 11, 2007, situated in Plaquemines Parish, Louisiana, and more particularly described as follows: Beginning at a point within Block 35, Main Pass Area, Revised, having Coordinates of X = 2,618,154.79 and Y = 282,000.00; thence East 7,194.63 feet to a point within Block 36, Main Pass Area, Revised, having Coordinates of X = 2,625,349.42 and Y = 282,000.00; thence South 4,107.31 feet to a point within Block 49, Main Pass Area, Revised, also being a point on the Northern boundary of State Lease No. 19001 having Coordinates of X = 2,625,349.42 and Y = 277,892.69; thence North 49 degrees 53 minutes 12 seconds West 290.71 feet along the Northern boundary of said State Lease No. 19001 to its Northernmost Northeast corner, also being the Southeast corner of State Lease No. 19000 having Coordinates of X = 2,625,127.09 and Y = 278,080.00; thence along the boundary of said State Lease No. 19000 the following courses: North 49 degrees 53 minutes 12 seconds West 1,395.31 feet to a point having Coordinates of X = 2,624,060.00 and Y = 278,979.00 and South 50 degrees 07 minutes 19 seconds West 1,402.15 feet to its Southwest corner, also being a point on the North boundary of said State Lease No. 19001 having Coordinates of X = 2,622,983.97 and Y = 278,080.00; thence West 2,383.97 feet along the North boundary of said State Lease No. 19001 to its Northwest corner, also being the Northeast corner of State Lease No. 19002 having Coordinates of X = 2,620,600.00 and Y = 278,080.00; thence along the boundary of said State Lease No. 19002 the following courses: West 2,276.00 feet to a point having Coordinates of X = 2,618,324.00 and Y = 278,080.00; South 1,832.00 feet to a point having Coordinates of X = 2,618,324.00 and Y = 276,248.00; South 54 degrees 55 minutes 05 seconds East 2,455.00 feet to a point having Coordinates of X = 2,620,333.00 and Y = 274,837.00 and East 267.00 feet to its Southeast corner, also being the Southwest corner of said State Lease No. 19001 having Coordinates of X = 2,620,600.00 and Y = 274,837.00; thence East 4,749.42 feet along the South boundary of said State Lease No. 19001 to a point having Coordinates of X = 2,625,349.42 and Y = 274,837.00; thence South 8,012.67 feet to a point within said Block 49 having Coordinates of X = 2,625,349.42 and Y = 266,824.33; thence West 7,194.63 feet to a point within Block 50, Main Pass Area, Revised, having Coordinates of X = 2,618,154.79 and Y = 266,824.33; thence North 15,175.67 feet to the point of beginning, containing approximately **1,977 acres**, all as more particularly outlined on a plat on file in the Office of Mineral Resources, Department of Natural Resources. All bearings, distances and coordinates are based on Louisiana Coordinate System of 1927, (North or South Zone), where applicable.

NOTE: The above description of the Tract nominated for lease has been provided and corrected, where required, exclusively by the nomination

party. Any mineral lease selected from this Tract and awarded by the Louisiana State Mineral Board shall be without warranty of any kind, either express, implied, or statutory, including, but not limited to, the implied warranties of merchantability and fitness for a particular purpose. Should the mineral lease awarded by the Louisiana State Mineral Board be subsequently modified, cancelled or abrogated due to the existence of conflicting leases, operating agreements, private claims or other future obligations or conditions which may affect all or any portion of the leased Tract, it shall not relieve the Lessee of the obligation to pay any bonus due thereon to the Louisiana State Mineral Board, nor shall the Louisiana State Mineral Board be obligated to refund any consideration paid by the Lessor prior to such modification, cancellation, or abrogation, including, but not limited to, bonuses, rentals and royalties.

NOTE: The State of Louisiana does hereby reserve, and this lease shall be subject to, the imprescriptible right of surface use in the nature of a servitude in favor of the Department of Natural Resources, including its Offices and Commissions, for the sole purpose of implementing, constructing, servicing and maintaining approved coastal zone management and/or restoration projects. Utilization of any and all rights derived under this lease by the mineral lessee, its agents, successors or assigns, shall not interfere with nor hinder the reasonable surface use by the Department of Natural Resources, its Offices or Commissions, as herein above reserved.

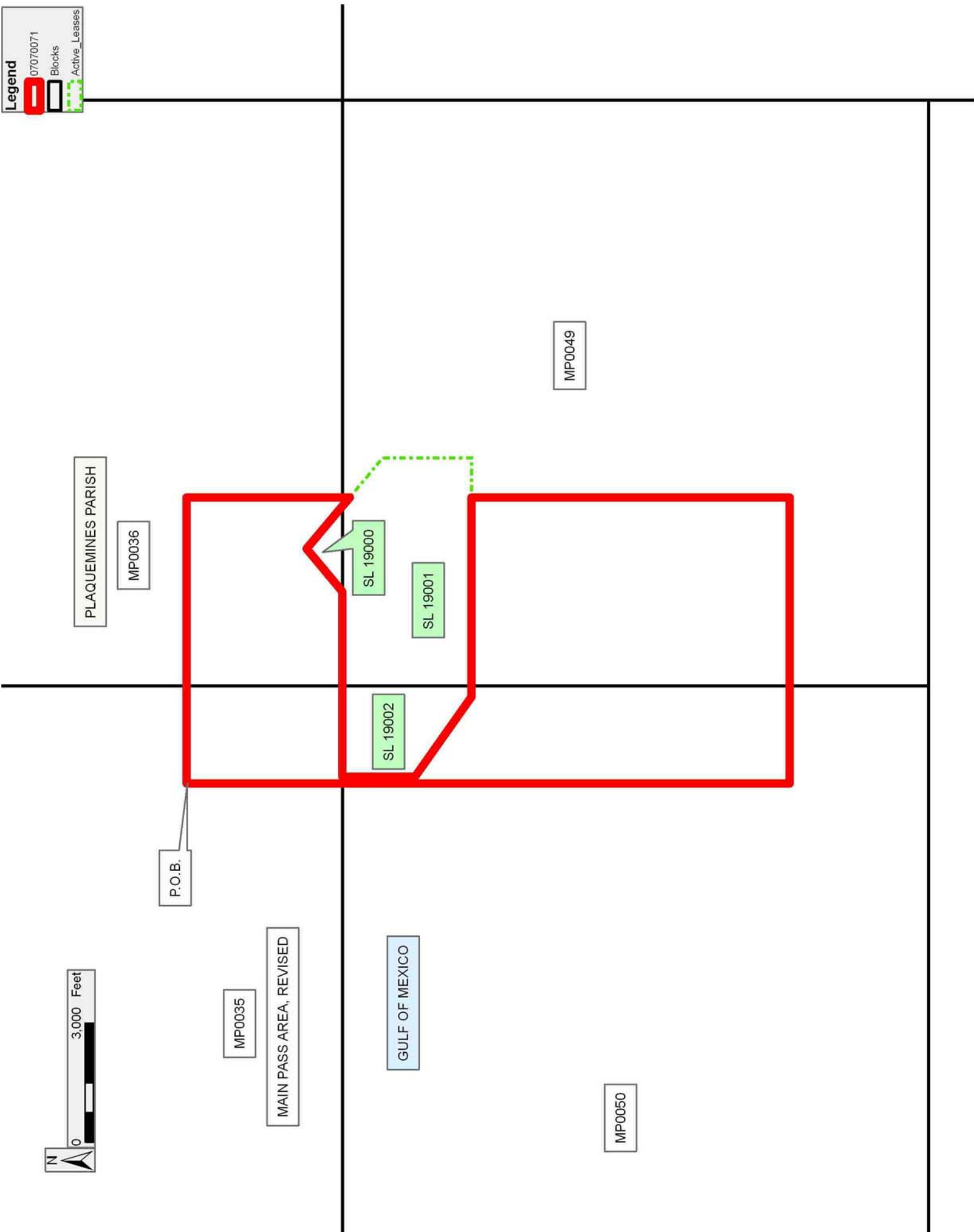
NOTE: The Department of Wildlife and Fisheries has designated certain areas in the coastal waters of the State of Louisiana as Oyster Seed Bed Areas. The exact location of those Seed Bed Areas must be obtained from the Department of Wildlife and Fisheries and any work done under a mineral lease from the State of Louisiana may necessarily be conducted in conformity with the rules and regulations promulgated by the said Department of Wildlife and Fisheries for Oyster Seed Bed Areas.

Applicant: CYPRESS ENERGY CORPORATION

Bidder	Cash Payment	Price/Acre	Rental	Oil	Gas	Other

**Legend**

- 07070071
- Blocks
- Active\_Leases



**TRACT 39247 - Portion of Blocks 36, and 49, Main Pass Area, Revised, Plaquemines Parish, Louisiana**

All of the lands now or formerly constituting the beds and bottoms of all water bodies of every nature and description the title of which vests in the State of Louisiana, together with all islands arising therein and other lands formed by accretion or by reliction, where allowed by law, excepting tax adjudicated lands, and not presently under mineral lease on July 11, 2007, situated in Plaquemines Parish, Louisiana, and more particularly described as follows: Beginning at a point within Block 36, Main Pass Area, Revised, having Coordinates of X = 2,625,349.42 and Y = 282,000.00; thence East 5,059.58 feet to a point on the West boundary of State Lease No. 18014 having Coordinates of X = 2,630,409.00 and Y = 282,000.00; thence South 1,231.26 feet along the West boundary of said State Lease No. 18014 to a point on the Northern boundary of State Lease No. 18624 having Coordinates of X = 2,630,409.00 and Y = 280,768.74; thence along the boundary of said State Lease No. 18624 the following courses: North 76 degrees 49 minutes 26 seconds West 387.46 feet to a point having Coordinates of X = 2,630,031.74 and Y = 280,857.06; South 58 degrees 07 minutes 13 seconds West 1,266.83 feet to a point having Coordinates of X = 2,628,956.00 and Y = 280,188.00; South 04 degrees 17 minutes 01 seconds East 1,298.63 feet to a point having Coordinates of X = 2,629,053.00 and Y = 278,893.00; North 76 degrees 02 minutes 47 seconds East 2,019.60 feet to a point having Coordinates of X = 2,631,013.00 and Y = 279,380.00 and North 09 degrees 21 minutes 42 seconds West 1,314.92 feet to its Northeast corner, also being a point on the Southern boundary of said State Lease No. 18014 having Coordinates of X = 2,630,799.11 and Y = 280,677.41; thence South 76 degrees 49 minutes 26 seconds East 2,260.40 feet along the Southern boundary of said State Lease No. 18014 to a point having Coordinates of X = 2,633,000.00 and Y = 280,162.17; thence South 9,642.61 feet to a point within Block 49, Main Pass Area, Revised, also being the Northwest corner of State Lease No. 19003 having Coordinates of X = 2,633,000.00 and Y = 270,519.56; thence South 1,081.74 feet along the West boundary of said State Lease No. 19003 to its Southwest corner having Coordinates of X = 2,633,000.00 and Y = 269,437.82; thence South 2,613.49 feet to a point having Coordinates of X = 2,633,000.00 and Y = 266,824.33; thence West 7,650.58 feet to a point having Coordinates of X = 2,625,349.42 and Y = 266,824.33; thence North 8,012.67 feet to a point on the South boundary of State Lease No. 19001 having Coordinates of X = 2,625,349.42 and Y = 274,837.00; thence along the boundary of said State Lease No. 19001 the following courses: East 989.58 feet to a point having Coordinates of X = 2,626,339.00 and Y = 274,837.00; North 2,222.00 feet to a point having Coordinates of X = 2,626,339.00 and Y = 277,059.00 and North 49 degrees 53 minutes 12 seconds West 1,293.95 feet to a point having Coordinates of X = 2,625,349.42 and Y = 277,892.69; thence North 4,107.31 feet to the point of beginning, containing approximately **2,447.69 acres**, all as more particularly outlined on a plat on file in the Office of Mineral Resources, Department of Natural Resources. All bearings, distances and coordinates are based on Louisiana Coordinate System of 1927, (North or South Zone), where applicable.

NOTE: The above description of the Tract nominated for lease has been provided and corrected, where required, exclusively by the nomination party. Any mineral lease selected from this Tract and awarded by the Louisiana State Mineral Board shall be without warranty of any kind, either express, implied, or statutory, including, but not limited to, the implied warranties of merchantability and fitness for a particular purpose. Should the mineral lease awarded by the Louisiana State Mineral Board be subsequently modified, cancelled or abrogated due to the existence of conflicting leases, operating agreements, private claims or other future obligations or conditions which may affect all or any portion of the leased Tract, it shall not relieve the Lessee of the obligation to pay any bonus due thereon to the Louisiana State Mineral Board, nor shall the Louisiana State Mineral Board be obligated to refund any consideration paid by the Lessor prior to such modification, cancellation, or abrogation, including, but not limited to, bonuses, rentals and royalties.

NOTE: The State of Louisiana does hereby reserve, and this lease shall be subject to, the imprescriptible right of surface use in the nature of a servitude in favor of the Department of Natural Resources, including its Offices and Commissions, for the sole purpose of implementing, constructing, servicing and maintaining approved coastal zone management and/or restoration projects. Utilization of any and all rights derived under this lease by the mineral lessee, its agents, successors or assigns, shall not interfere with nor hinder the reasonable surface use by the Department of Natural Resources, its Offices or Commissions, as herein above reserved.

NOTE: The Department of Wildlife and Fisheries has designated certain areas in the coastal waters of the State of Louisiana as Oyster Seed Bed Areas. The exact location of those Seed Bed Areas must be obtained from the Department of Wildlife and Fisheries and any work done under a mineral lease from the State of Louisiana may necessarily be conducted in conformity with the rules and regulations promulgated by the said Department of Wildlife and Fisheries for Oyster Seed Bed Areas.

Applicant: CYPRESS ENERGY CORPORATION

Bidder	Cash Payment	Price/Acre	Rental	Oil	Gas	Other

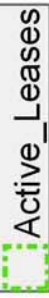
**Legend**



07070072



Blocks



Active\_Leases

