

**TRACT 39228 - Iberia Parish, Louisiana**

All of the lands now or formerly constituting the beds and bottoms of all water bodies of every nature and description the title of which vests in the State of Louisiana, together with all islands arising therein and other lands formed by accretion or by reliction, where allowed by law, excepting tax adjudicated lands, and not presently under mineral lease on July 11, 2007, situated in Iberia Parish, Louisiana, and more particularly described as follows: Beginning at a point having Coordinates of X = 1,857,287.13 and Y = 344,957.00; thence West 4,300.13 feet to a point having Coordinates of X = 1,852,987.00 and Y = 344,957.00; thence North 0.06 feet to a point having Coordinates of X = 1,852,987.00 and Y = 344,957.06; thence Westerly approximately 11,508 feet to the Southernmost Southeast corner of the West Cote Blanche Bay portion of State Lease No. 340, as amended; thence North 60 degrees 00 minutes 00 seconds East 18,250.00 feet along the Southern boundary of said portion of said State Lease No. 340 to a Southeast corner; thence Southerly approximately 9,183 feet to the point of beginning; **LESS AND EXCEPT** that portion, if any, of State Lease No. 340, as amended, that may lie within the above described tract, containing approximately **1,655 acres**, all as more particularly outlined on a plat on file in the Office of Mineral Resources, Department of Natural Resources. All bearings, distances and coordinates are based on Louisiana Coordinate System of 1927, (North or South Zone), where applicable.

NOTE: The above description of the Tract nominated for lease has been provided and corrected, where required, exclusively by the nomination party. Any mineral lease selected from this Tract and awarded by the Louisiana State Mineral Board shall be without warranty of any kind, either express, implied, or statutory, including, but not limited to, the implied warranties of merchantability and fitness for a particular purpose. Should the mineral lease awarded by the Louisiana State Mineral Board be subsequently modified, cancelled or abrogated due to the existence of conflicting leases, operating agreements, private claims or other future obligations or conditions which may affect all or any portion of the leased Tract, it shall not relieve the Lessee of the obligation to pay any bonus due thereon to the Louisiana State Mineral Board, nor shall the Louisiana State Mineral Board be obligated to refund any consideration paid by the Lessor prior to such modification, cancellation, or abrogation, including, but not limited to, bonuses, rentals and royalties.

NOTE: The Office of Mineral Resources will require a minimum bonus of \$300 per acre and a minimum royalty of 25%.

NOTE: The acreage contained herein, being a portion of State Lease 335, 340 or 341, was subject to the litigation between Texas, Inc. and the State of Louisiana which resulted in the Global Settlement Agreement compromise whereby this acreage was reassigned through various mesne conveyances to the successors of William T. Burton, the original lessee of said leases from the State, (hereinafter otherwise referred to as the

"ORRO's) and approved by the State Mineral Board, becoming effective April 25, 1994. Under separate agreement by and between the State and the ORRO's, certain obligations were to be met within a specified time frame or the ORRO's became obligated to release the reassigned acreage back to the State. The obligations were not met within the specified time frame and the State began securing the releases for the acreage contained herein. Due to the extremely large number of ORRO's, their nationwide and worldwide dispersal, the unreliability of available contact information and/or a present inability to obtain full, requisite cooperation, the State has, as yet, not secured releases from certain ORRO's representing approximately a .0258336 interest in this acreage. Accordingly, although the State is diligently pursuing the requisite releases affecting this acreage (the furnishing of which the ORRO's representing the stated decimal interest are obligated), nevertheless, a party obtaining a mineral lease from the State of Louisiana on the acreage contained herein shall do so with full knowledge that a complete release of all specific ORRO interest in this acreage has not as yet been secured and shall assume a business risk commensurate with the unsecured interest release.

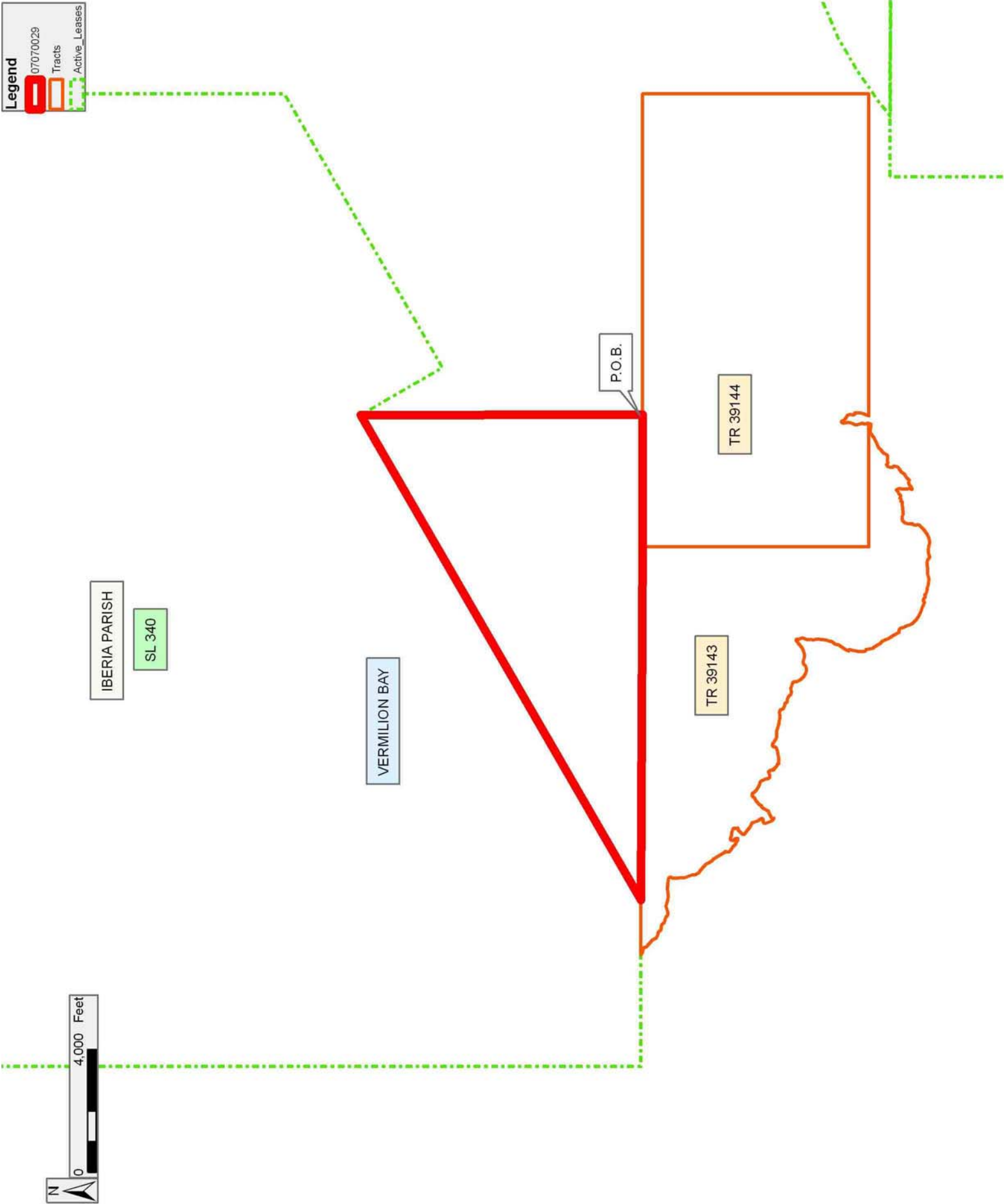
NOTE: The State of Louisiana does hereby reserve, and this lease shall be subject to, the imprescriptible right of surface use in the nature of a servitude in favor of the Department of Natural Resources, including its Offices and Commissions, for the sole purpose of implementing, constructing, servicing and maintaining approved coastal zone management and/or restoration projects. Utilization of any and all rights derived under this lease by the mineral lessee, its agents, successors or assigns, shall not interfere with nor hinder the reasonable surface use by the Department of Natural Resources, its Offices or Commissions, as herein above reserved.

NOTE: The Department of Wildlife and Fisheries has designated certain areas in the coastal waters of the State of Louisiana as Oyster Seed Bed Areas. The exact location of those Seed Bed Areas must be obtained from the Department of Wildlife and Fisheries and any work done under a mineral lease from the State of Louisiana may necessarily be conducted in conformity with the rules and regulations promulgated by the said Department of Wildlife and Fisheries for Oyster Seed Bed Areas.

NOTE: All or a portion of this Tract lies within one nautical mile of the boundary of the Russell Sage or Marsh Island Wildlife Refuge and Game Preserve. Any activities connected with this lease conducted within this Tract which may pose potential environmental impacts to the said Wildlife Refuge and Game Preserve should be coordinated with the Louisiana Department of Wildlife and Fisheries.

Applicant: PATRICK L. DONOHUE PETROLEUM PROPERTIES, INC.

Bidder	Cash Payment	Price/ Acre	Rental	Oil	Gas	Other



**TRACT 39229 - Lafourche and Terrebonne Parishes, Louisiana**

All of the lands now or formerly constituting the beds and bottoms of all water bodies of every nature and description the title of which vests in the State of Louisiana, together with all islands arising therein and other lands formed by accretion or by reliction, where allowed by law, excepting tax adjudicated lands, and not presently under mineral lease on July 11, 2007, situated in Lafourche and Terrebonne Parishes, Louisiana, and more particularly described as follows: Beginning at a point on the East boundary of State Lease No. 17889 having Coordinates of X = 2,229,500.00 and Y = 345,068.18; thence East 18,480.00 feet to a point having Coordinates of X = 2,247,980.00 and Y = 345,068.18; thence South approximately 10,025 feet to a point on the Northwestern boundary of State Lease No. 328, as amended; thence Southwesterly approximately 1,221 feet along the Northwestern boundary of said State Lease No. 328 to the Northeast corner of State Lease No. 19314 having a Coordinate of Y = 334,065.92; thence West approximately 4,254 feet along the North boundary of said State Lease No. 19314 to its Northwest corner, also being the Northeast corner State Lease No. 19332 having Coordinates of X = 2,243,049.59 and Y = 334,065.92; thence along the boundary of said State Lease No. 19332 the following courses: West 3,500.00 feet; South 2,500.00 feet and East approximately 2,540 feet to its Southernmost Southeast corner, also being point on the Southern boundary of said State Lease No. 19314 having a Coordinate of Y = 331,565.92; thence Southeasterly along the boundary of said State Lease No. 19314 to its Southeast corner, also being the Westernmost corner of said State Lease No. 328; thence Southeasterly along the boundary of said State Lease No. 328 to a point of intersection with a North-South line having a Coordinate of X = 2,247,980.00; thence South approximately 683 feet to a point having Coordinates of X = 2,247,980.00 and Y = 326,588.18; thence West 12,080.00 feet to a point on the East boundary of State Lease No. 18662 having Coordinates of X = 2,235,900.00 and Y = 326,588.18; thence along the boundary of said State Lease No. 18662 the following courses: North 5,023.30 feet and West 6,400.00 feet to its Northwest corner having Coordinates of X = 2,229,500.00 and Y = 331,611.48; thence North 3,868.52 feet to the Southeast corner of said State Lease No. 17889 having Coordinates of X = 2,229,500.00 and Y = 335,480.00; thence North 9,588.18 feet along the East boundary of said State Lease No. 17889 to the point of beginning, **LESS AND EXCEPT** all of State Lease No. 9637, as amended, that lies within the above described tract, being more particularly described as follows: Commencing at the point of beginning of the above described nominated tract having Coordinates of X = 2,229,500.00 and Y = 345,068.18; thence South 53 degrees 23 minutes 08 seconds East 12,386.09 feet to a starting point on the boundary of said State Lease No. 9637 having Coordinates of X = 2,239,441.89 and Y = 337,680.76; thence along the boundary of said State Lease No. 9637 the following courses: North 38 degrees 30 minutes 36 seconds East 1,653.92 feet; North 42 degrees 11 minutes 07 seconds East 916.43 feet; North 48 degrees 22 minutes 44 seconds East 1,217.05 feet; North 60 degrees 10 minutes 42 seconds East 471.40 feet; North 70 degrees 03 minutes 29 seconds East 420.00 feet;

North 80 degrees 55 minutes 21 seconds East 454.71 feet; South 89 degrees 22 minutes 55 seconds East 421.74 feet; South 79 degrees 38 minutes 37 seconds East 457.92 feet; South 69 degrees 55 minutes 14 seconds East 448.91 feet; South 65 degrees 02 minutes 15 seconds East 433.36 feet; South 01 degrees 35 minutes 29 seconds East 706.89 feet; South 04 degrees 00 minutes 28 seconds West 498.76 feet; South 10 degrees 09 minutes 28 seconds West 493.25 feet; South 06 degrees 20 minutes 55 seconds West 400.54 feet; South 02 degrees 28 minutes 05 seconds East 445.42 feet; South 09 degrees 23 minutes 29 seconds East 464.71 feet; South 16 degrees 17 minutes 59 seconds East 301.97 feet; South 81 degrees 20 minutes 59 seconds West 226.86 feet; South 66 degrees 51 minutes 22 seconds West 363.02 feet; South 56 degrees 20 minutes 00 seconds West 453.95 feet; South 60 degrees 41 minutes 12 seconds West 370.93 feet; South 71 degrees 18 minutes 11 seconds West 329.01 feet; South 81 degrees 38 minutes 15 seconds West 334.23 feet; North 89 degrees 51 minutes 23 seconds West 379.17 feet; North 81 degrees 25 minutes 43 seconds West 360.17 feet; North 72 degrees 07 minutes 43 seconds West 1,016.91 feet; North 67 degrees 03 minutes 46 seconds West 970.67 feet; North 64 degrees 55 minutes 46 seconds West 762.67 feet and North 63 degrees 19 minutes 40 seconds West 378.50 feet to the starting point, **ALSO LESS AND EXCEPT** that portion, if any, of State Lease No. 328, as amended, and State Lease No. 19314 and State Lease No. 19332 that may lie within the above described tract, (This nominated tract includes only waterbottoms claimed and owned by the state and specifically excludes any land which the state may claim or own and to which the mineral rights are vested in the state), the nominated tract containing approximately **1,066 acres**, all as more particularly outlined on a plat on file in the Office of Mineral Resources, Department of Natural Resources. All bearings, distances and coordinates are based on Louisiana Coordinate System of 1927, (North or South Zone), where applicable.

NOTE: The above description of the Tract nominated for lease has been provided and corrected, where required, exclusively by the nomination party. Any mineral lease selected from this Tract and awarded by the Louisiana State Mineral Board shall be without warranty of any kind, either express, implied, or statutory, including, but not limited to, the implied warranties of merchantability and fitness for a particular purpose. Should the mineral lease awarded by the Louisiana State Mineral Board be subsequently modified, cancelled or abrogated due to the existence of conflicting leases, operating agreements, private claims or other future obligations or conditions which may affect all or any portion of the leased Tract, it shall not relieve the Lessee of the obligation to pay any bonus due thereon to the Louisiana State Mineral Board, nor shall the Louisiana State Mineral Board be obligated to refund any consideration paid by the Lessor prior to such modification, cancellation, or abrogation, including, but not limited to, bonuses, rentals and royalties.

NOTE: The State of Louisiana does hereby reserve, and this lease shall be subject to, the imprescriptible right of surface use in the nature of a

servitude in favor of the Department of Natural Resources, including its Offices and Commissions, for the sole purpose of implementing, constructing, servicing and maintaining approved coastal zone management and/or restoration projects. Utilization of any and all rights derived under this lease by the mineral lessee, its agents, successors or assigns, shall not interfere with nor hinder the reasonable surface use by the Department of Natural Resources, its Offices or Commissions, as herein above reserved.

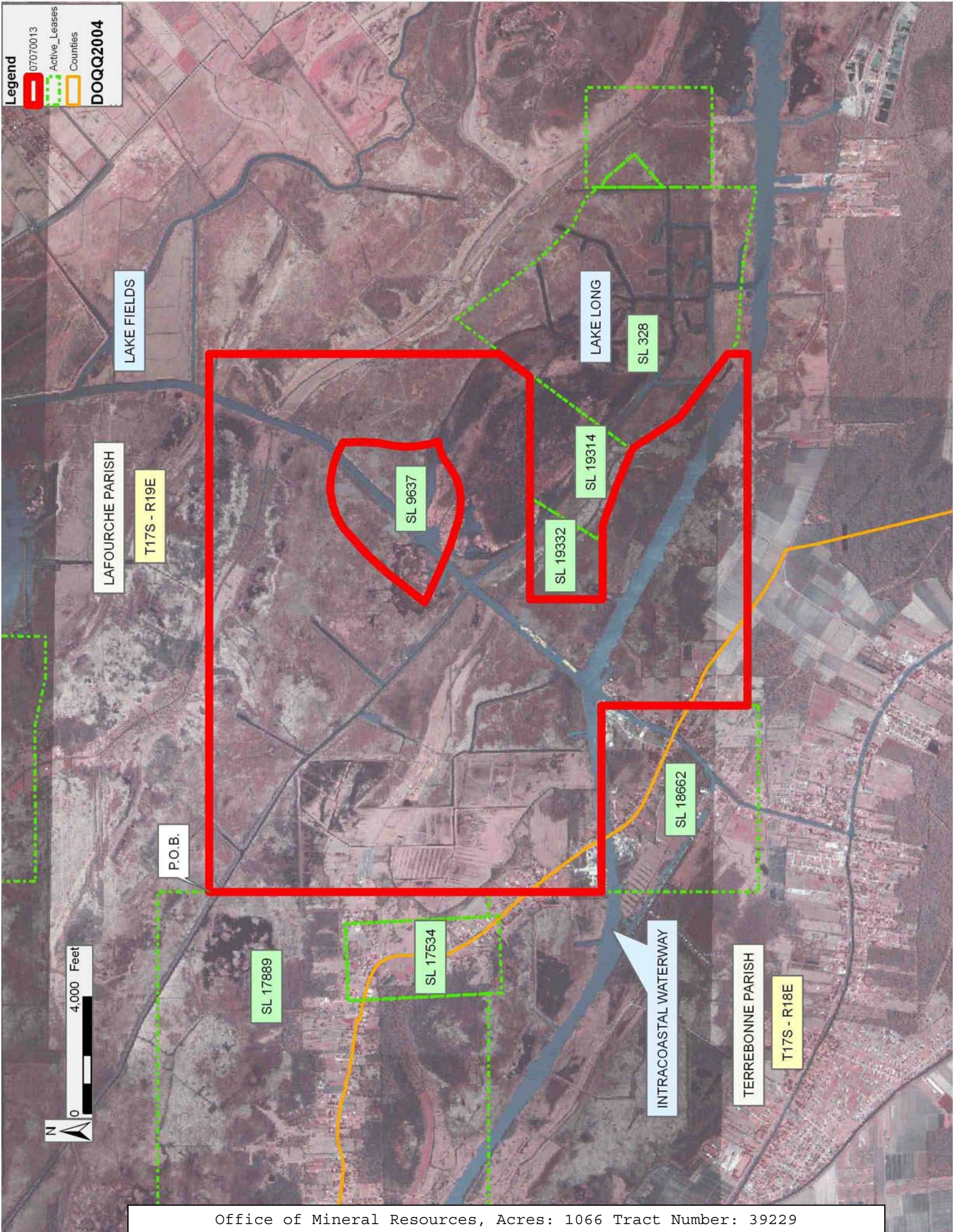
Applicant: HAROLD J. ANDERSON, INC.

Bidder	Cash Payment	Price/ Acre	Rental	Oil	Gas	Other



**Legend**

- 07070013
- Active\_Leases
- Counties
- DOQQ2004





**TRACT 39230 - Jefferson Parish, Louisiana**

All of the lands now or formerly constituting the beds and bottoms of all water bodies of every nature and description the title of which vests in the State of Louisiana, together with all islands arising therein and other lands formed by accretion or by reliction, where allowed by law, excepting tax adjudicated lands, and not presently under mineral lease on July 11, 2007, situated in Jefferson Parish, Louisiana, and more particularly described as follows: Beginning at a Point having Coordinates of X = 2,400,211.90 and Y = 324,921.68; Thence East 5,385.10 feet to a point having Coordinates of X = 2,405,597.00 and Y = 324,921.68; Thence South 3,350.00 feet to a point having Coordinates of X = 2,405,597.00 and Y = 321,571.68; Thence West 5,385.10 feet to a point having Coordinates of X = 2,400,211.90 and Y = 321,571.68; Thence North 3,350.00 feet to the beginning point containing approximately **172 acres**, all as more particularly outlined on a plat on file in the Office of Mineral Resources, Department of Natural Resources. All bearings, distances and coordinates are based on Louisiana Coordinate System of 1927, (North or South Zone), where applicable.

NOTE: The above description of the Tract nominated for lease has been provided and corrected, where required, exclusively by the nomination party. Any mineral lease selected from this Tract and awarded by the Louisiana State Mineral Board shall be without warranty of any kind, either express, implied, or statutory, including, but not limited to, the implied warranties of merchantability and fitness for a particular purpose. Should the mineral lease awarded by the Louisiana State Mineral Board be subsequently modified, cancelled or abrogated due to the existence of conflicting leases, operating agreements, private claims or other future obligations or conditions which may affect all or any portion of the leased Tract, it shall not relieve the Lessee of the obligation to pay any bonus due thereon to the Louisiana State Mineral Board, nor shall the Louisiana State Mineral Board be obligated to refund any consideration paid by the Lessor prior to such modification, cancellation, or abrogation, including, but not limited to, bonuses, rentals and royalties.

NOTE: The State of Louisiana does hereby reserve, and this lease shall be subject to, the imprescriptible right of surface use in the nature of a servitude in favor of the Department of Natural Resources, including its Offices and Commissions, for the sole purpose of implementing, constructing, servicing and maintaining approved coastal zone management and/or restoration projects. Utilization of any and all rights derived under this lease by the mineral lessee, its agents, successors or assigns, shall not interfere with nor hinder the reasonable surface use by the Department of Natural Resources, its Offices or Commissions, as herein above reserved.


NOTE: The Department of Wildlife and Fisheries has designated certain areas in the coastal waters of the State of Louisiana as Oyster Seed Bed Areas. The exact location of those Seed Bed Areas must be obtained from


the Department of Wildlife and Fisheries and any work done under a mineral lease from the State of Louisiana may necessarily be conducted in conformity with the rules and regulations promulgated by the said Department of Wildlife and Fisheries for Oyster Seed Bed Areas.

Applicant: MINERAL SERVICES, INC.

Bidder	Cash Payment	Price/ Acre	Rental	Oil	Gas	Other

Legend

 07070080

 Active\_Leases

DOQQ2004

JEFFERSON PARISH

SL 16681

P.O.B.

THREE BAYOU BAY



**TRACT 39231 - Jefferson Parish, Louisiana**

All of the lands now or formerly constituting the beds and bottoms of all water bodies of every nature and description the title of which vests in the State of Louisiana, together with all islands arising therein and other lands formed by accretion or by reliction, where allowed by law, excepting tax adjudicated lands, and not presently under mineral lease on July 11, 2007, situated in Jefferson Parish, Louisiana, and more particularly described as follows: Beginning at a Point having Coordinates of X = 2,400,211.90 and Y = 322,708.92; Thence South 2,589.46 feet to a point having Coordinates of X = 2,400,211.90 and Y = 320,119.46; Thence West 5,418.00 feet to a point having Coordinates of X = 2,394,793.90 and Y = 320,119.46; Thence North 2,589.46 feet to a point having Coordinates of X = 2,394,793.90 and Y = 322,708.92; Thence East 5,418.00 feet to the beginning point containing approximately **9.5 acres**, all as more particularly outlined on a plat on file in the Office of Mineral Resources, Department of Natural Resources. All bearings, distances and coordinates are based on Louisiana Coordinate System of 1927, (North or South Zone), where applicable.

NOTE: The above description of the Tract nominated for lease has been provided and corrected, where required, exclusively by the nomination party. Any mineral lease selected from this Tract and awarded by the Louisiana State Mineral Board shall be without warranty of any kind, either express, implied, or statutory, including, but not limited to, the implied warranties of merchantability and fitness for a particular purpose. Should the mineral lease awarded by the Louisiana State Mineral Board be subsequently modified, cancelled or abrogated due to the existence of conflicting leases, operating agreements, private claims or other future obligations or conditions which may affect all or any portion of the leased Tract, it shall not relieve the Lessee of the obligation to pay any bonus due thereon to the Louisiana State Mineral Board, nor shall the Louisiana State Mineral Board be obligated to refund any consideration paid by the Lessor prior to such modification, cancellation, or abrogation, including, but not limited to, bonuses, rentals and royalties.

NOTE: The State of Louisiana does hereby reserve, and this lease shall be subject to, the imprescriptible right of surface use in the nature of a servitude in favor of the Department of Natural Resources, including its Offices and Commissions, for the sole purpose of implementing, constructing, servicing and maintaining approved coastal zone management and/or restoration projects. Utilization of any and all rights derived under this lease by the mineral lessee, its agents, successors or assigns, shall not interfere with nor hinder the reasonable surface use by the Department of Natural Resources, its Offices or Commissions, as herein above reserved.

NOTE: The Department of Wildlife and Fisheries has designated certain areas in the coastal waters of the State of Louisiana as Oyster Seed Bed Areas. The exact location of those Seed Bed Areas must be obtained from

the Department of Wildlife and Fisheries and any work done under a mineral lease from the State of Louisiana may necessarily be conducted in conformity with the rules and regulations promulgated by the said Department of Wildlife and Fisheries for Oyster Seed Bed Areas.

Applicant: MINERAL SERVICES, INC.

Bidder	Cash Payment	Price/ Acre	Rental	Oil	Gas	Other





**TRACT 39232 - Jefferson Parish, Louisiana**

All of the lands now or formerly constituting the beds and bottoms of all water bodies of every nature and description the title of which vests in the State of Louisiana, together with all islands arising therein and other lands formed by accretion or by reliction, where allowed by law, excepting tax adjudicated lands, and not presently under mineral lease on July 11, 2007, situated in Jefferson Parish, Louisiana, and more particularly described as follows: Beginning at a Point having Coordinates of X = 2,405,597.00 and Y = 322,499.00; Thence East 5,373.00 feet to a point having Coordinates of X = 2,410,970.00 and Y = 322,499.00; Thence South 1,330.00 feet to a point having Coordinates of X = 2,410,970.00 and Y = 321,169.00; Thence West 1,050.00 feet to the Northeast corner of State Lease No. 18441 having Coordinates of X = 2,409,920.00 and Y = 321,169.00; Thence West 4,323.00 feet along the Northern boundary of said State Lease No. 18441 to its Northwest corner having Coordinates of X = 2,405,597.00 and Y = 321,169.00; Thence North 1,330.00 feet to the beginning point containing approximately **21 acres**, all as more particularly outlined on a plat on file in the Office of Mineral Resources, Department of Natural Resources. All bearings, distances and coordinates are based on Louisiana Coordinate System of 1927, (North or South Zone), where applicable.

NOTE: The above description of the Tract nominated for lease has been provided and corrected, where required, exclusively by the nomination party. Any mineral lease selected from this Tract and awarded by the Louisiana State Mineral Board shall be without warranty of any kind, either express, implied, or statutory, including, but not limited to, the implied warranties of merchantability and fitness for a particular purpose. Should the mineral lease awarded by the Louisiana State Mineral Board be subsequently modified, cancelled or abrogated due to the existence of conflicting leases, operating agreements, private claims or other future obligations or conditions which may affect all or any portion of the leased Tract, it shall not relieve the Lessee of the obligation to pay any bonus due thereon to the Louisiana State Mineral Board, nor shall the Louisiana State Mineral Board be obligated to refund any consideration paid by the Lessor prior to such modification, cancellation, or abrogation, including, but not limited to, bonuses, rentals and royalties.

NOTE: The State of Louisiana does hereby reserve, and this lease shall be subject to, the imprescriptible right of surface use in the nature of a servitude in favor of the Department of Natural Resources, including its Offices and Commissions, for the sole purpose of implementing, constructing, servicing and maintaining approved coastal zone management and/or restoration projects. Utilization of any and all rights derived under this lease by the mineral lessee, its agents, successors or assigns, shall not interfere with nor hinder the reasonable surface use by the Department of Natural Resources, its Offices or Commissions, as herein above reserved.

NOTE: The Department of Wildlife and Fisheries has designated certain areas in the coastal waters of the State of Louisiana as Oyster Seed Bed Areas. The exact location of those Seed Bed Areas must be obtained from the Department of Wildlife and Fisheries and any work done under a mineral lease from the State of Louisiana may necessarily be conducted in conformity with the rules and regulations promulgated by the said Department of Wildlife and Fisheries for Oyster Seed Bed Areas.

Applicant: MINERAL SERVICES, INC.

Bidder	Cash Payment	Price/ Acre	Rental	Oil	Gas	Other

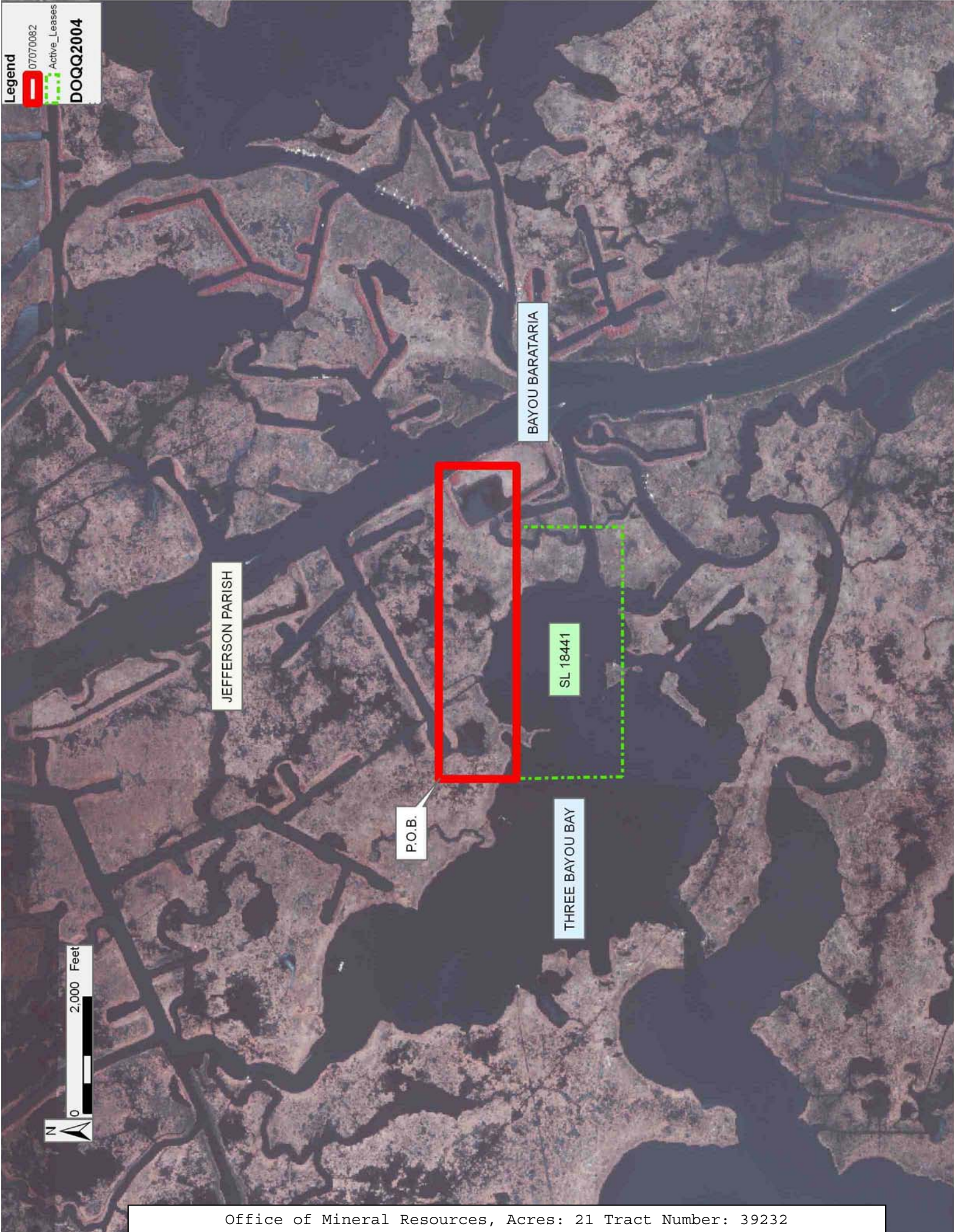


Legend

 07070082

 Active\_Leases

DOQQ2004



**TRACT 39233 - Jefferson Parish, Louisiana**

All of the lands now or formerly constituting the beds and bottoms of all water bodies of every nature and description the title of which vests in the State of Louisiana, together with all islands arising therein and other lands formed by accretion or by reliction, where allowed by law, excepting tax adjudicated lands, and not presently under mineral lease on July 11, 2007, situated in Jefferson Parish, Louisiana, and more particularly described as follows: Beginning the Southwest corner of State Lease No. 18441 having Coordinates of X = 2,405,630.00 and Y = 319,350.00; Thence West 5,418.10 feet to a point having Coordinates of X = 2,400,211.90 and Y = 319,350.00; Thence North 2,221.68 feet to a point having Coordinates of X = 2,400,211.90 and Y = 321,571.68; Thence East 5,385.10 feet to a point having Coordinates of X = 2,405,597.00 and Y = 321,571.68; Thence South 402.68 feet to the Northwest corner of said State Lease No. 18441 having Coordinates of X = 2,405,597.00 and Y = 321,169.00; Thence South 01 degrees 02 minutes 22 seconds East 1,819.30 feet along the Western boundary of said State Lease No. 18441 to the beginning point containing approximately **165 acres**, all as more particularly outlined on a plat on file in the Office of Mineral Resources, Department of Natural Resources. All bearings, distances and coordinates are based on Louisiana Coordinate System of 1927, (North or South Zone), where applicable.

NOTE: The above description of the Tract nominated for lease has been provided and corrected, where required, exclusively by the nomination party. Any mineral lease selected from this Tract and awarded by the Louisiana State Mineral Board shall be without warranty of any kind, either express, implied, or statutory, including, but not limited to, the implied warranties of merchantability and fitness for a particular purpose. Should the mineral lease awarded by the Louisiana State Mineral Board be subsequently modified, cancelled or abrogated due to the existence of conflicting leases, operating agreements, private claims or other future obligations or conditions which may affect all or any portion of the leased Tract, it shall not relieve the Lessee of the obligation to pay any bonus due thereon to the Louisiana State Mineral Board, nor shall the Louisiana State Mineral Board be obligated to refund any consideration paid by the Lessor prior to such modification, cancellation, or abrogation, including, but not limited to, bonuses, rentals and royalties.

NOTE: The State of Louisiana does hereby reserve, and this lease shall be subject to, the imprescriptible right of surface use in the nature of a servitude in favor of the Department of Natural Resources, including its Offices and Commissions, for the sole purpose of implementing, constructing, servicing and maintaining approved coastal zone management and/or restoration projects. Utilization of any and all rights derived under this lease by the mineral lessee, its agents, successors or assigns, shall not interfere with nor hinder the reasonable surface use by the Department of Natural Resources, its Offices or Commissions, as herein above reserved.



NOTE: The Department of Wildlife and Fisheries has designated certain areas in the coastal waters of the State of Louisiana as Oyster Seed Bed Areas. The exact location of those Seed Bed Areas must be obtained from the Department of Wildlife and Fisheries and any work done under a mineral lease from the State of Louisiana may necessarily be conducted in conformity with the rules and regulations promulgated by the said Department of Wildlife and Fisheries for Oyster Seed Bed Areas.

Applicant: MINERAL SERVICES, INC.

Bidder	Cash Payment	Price/ Acre	Rental	Oil	Gas	Other

Legend

 07070079

 Active\_Leases

DOQQ2004

JEFFERSON PARISH

SL 18441

P.O.B.

THREE BAYOU BAY

LONG BAY



**TRACT 39234 - Jefferson Parish, Louisiana**

All of the lands now or formerly constituting the beds and bottoms of all water bodies of every nature and description the title of which vests in the State of Louisiana, together with all islands arising therein and other lands formed by accretion or by reliction, where allowed by law, excepting tax adjudicated lands, and not presently under mineral lease on July 11, 2007, situated in Jefferson Parish, Louisiana, and more particularly described as follows: Beginning at the Southwest corner of State Lease No. 18441 having Coordinates of X = 2,405,630.00 and Y = 319,350.00; Thence East 4,290.00 feet along the Southern boundary of said State Lease No. 18441 to its Southeast corner having Coordinates of X = 2,409,920.00 and Y = 319,350.00; Thence North 1,819.00 feet along the Eastern boundary of said State Lease No. 18441 to its northeast corner having Coordinates of X = 2,409,920.00 and Y = 321,169.00; Thence East 1,050.00 feet to a point having Coordinates of X = 2,410,970.00 and Y = 321,169.00; Thence South 3,639.00 feet to a point having Coordinates of X = 2,410,970.00 and Y = 317,530.00; Thence West 5,340.00 feet to a point having Coordinates of X = 2,405,630.00 and Y = 317,530.00; Thence North 1,820.00 feet to the beginning point containing approximately **114 acres**, all as more particularly outlined on a plat on file in the Office of Mineral Resources, Department of Natural Resources. All bearings, distances and coordinates are based on Louisiana Coordinate System of 1927, (North or South Zone), where applicable.

NOTE: The above description of the Tract nominated for lease has been provided and corrected, where required, exclusively by the nomination party. Any mineral lease selected from this Tract and awarded by the Louisiana State Mineral Board shall be without warranty of any kind, either express, implied, or statutory, including, but not limited to, the implied warranties of merchantability and fitness for a particular purpose. Should the mineral lease awarded by the Louisiana State Mineral Board be subsequently modified, cancelled or abrogated due to the existence of conflicting leases, operating agreements, private claims or other future obligations or conditions which may affect all or any portion of the leased Tract, it shall not relieve the Lessee of the obligation to pay any bonus due thereon to the Louisiana State Mineral Board, nor shall the Louisiana State Mineral Board be obligated to refund any consideration paid by the Lessor prior to such modification, cancellation, or abrogation, including, but not limited to, bonuses, rentals and royalties.

NOTE: The State of Louisiana does hereby reserve, and this lease shall be subject to, the imprescriptible right of surface use in the nature of a servitude in favor of the Department of Natural Resources, including its Offices and Commissions, for the sole purpose of implementing, constructing, servicing and maintaining approved coastal zone management and/or restoration projects. Utilization of any and all rights derived under this lease by the mineral lessee, its agents, successors or assigns, shall not interfere with nor hinder the reasonable surface use by the

Department of Natural Resources, its Offices or Commissions, as herein above reserved.


NOTE: The Department of Wildlife and Fisheries has designated certain areas in the coastal waters of the State of Louisiana as Oyster Seed Bed Areas. The exact location of those Seed Bed Areas must be obtained from the Department of Wildlife and Fisheries and any work done under a mineral lease from the State of Louisiana may necessarily be conducted in conformity with the rules and regulations promulgated by the said Department of Wildlife and Fisheries for Oyster Seed Bed Areas.


Applicant: MINERAL SERVICES, INC.

Bidder	Cash Payment	Price/ Acre	Rental	Oil	Gas	Other



Legend

 07070083

 Active\_Leases

DOQQ2004





**TRACT 39235 - Jefferson Parish, Louisiana**

All of the lands now or formerly constituting the beds and bottoms of all water bodies of every nature and description the title of which vests in the State of Louisiana, together with all islands arising therein and other lands formed by accretion or by reliction, where allowed by law, excepting tax adjudicated lands, and not presently under mineral lease on July 11, 2007, situated in Jefferson Parish, Louisiana, and more particularly described as follows: Beginning at a Point having Coordinates of X = 2,400,211.90 and Y = 320,119.46; Thence South 2,589.46 feet to a point having Coordinates of X = 2,400,211.90 and Y = 317,530.00; Thence West 5,418.00 feet to a point having Coordinates of X = 2,394,793.90 and Y = 317,530.00; Thence North 2,589.46 feet to a point having Coordinates of X = 2,394,793.90 and Y = 320,119.46; Thence East 5,418.00 feet to the beginning point containing approximately **183 acres**, all as more particularly outlined on a plat on file in the Office of Mineral Resources, Department of Natural Resources. All bearings, distances and coordinates are based on Louisiana Coordinate System of 1927, (North or South Zone), where applicable.

NOTE: The above description of the Tract nominated for lease has been provided and corrected, where required, exclusively by the nomination party. Any mineral lease selected from this Tract and awarded by the Louisiana State Mineral Board shall be without warranty of any kind, either express, implied, or statutory, including, but not limited to, the implied warranties of merchantability and fitness for a particular purpose. Should the mineral lease awarded by the Louisiana State Mineral Board be subsequently modified, cancelled or abrogated due to the existence of conflicting leases, operating agreements, private claims or other future obligations or conditions which may affect all or any portion of the leased Tract, it shall not relieve the Lessee of the obligation to pay any bonus due thereon to the Louisiana State Mineral Board, nor shall the Louisiana State Mineral Board be obligated to refund any consideration paid by the Lessor prior to such modification, cancellation, or abrogation, including, but not limited to, bonuses, rentals and royalties.

NOTE: The State of Louisiana does hereby reserve, and this lease shall be subject to, the imprescriptible right of surface use in the nature of a servitude in favor of the Department of Natural Resources, including its Offices and Commissions, for the sole purpose of implementing, constructing, servicing and maintaining approved coastal zone management and/or restoration projects. Utilization of any and all rights derived under this lease by the mineral lessee, its agents, successors or assigns, shall not interfere with nor hinder the reasonable surface use by the Department of Natural Resources, its Offices or Commissions, as herein above reserved.

NOTE: The Department of Wildlife and Fisheries has designated certain areas in the coastal waters of the State of Louisiana as Oyster Seed Bed Areas. The exact location of those Seed Bed Areas must be obtained from

the Department of Wildlife and Fisheries and any work done under a mineral lease from the State of Louisiana may necessarily be conducted in conformity with the rules and regulations promulgated by the said Department of Wildlife and Fisheries for Oyster Seed Bed Areas.

Applicant: MINERAL SERVICES, INC.

Bidder	Cash Payment	Price/ Acre	Rental	Oil	Gas	Other





**TRACT 39236 - Jefferson Parish, Louisiana**

All of the lands now or formerly constituting the beds and bottoms of all water bodies of every nature and description the title of which vests in the State of Louisiana, together with all islands arising therein and other lands formed by accretion or by reliction, where allowed by law, excepting tax adjudicated lands, and not presently under mineral lease on July 11, 2007, situated in Jefferson Parish, Louisiana, and more particularly described as follows: Beginning at a Point having Coordinates of X = 2,400,211.90 and Y = 317,530.00; Thence North 1,820.00 feet to a point having Coordinates of X = 2,400,211.90 and Y = 319,350.00; Thence East 5,418.10 feet to the Southwest corner of State Lease No. 18441 having Coordinates of X = 2,405,630.00 and Y = 319,350.00; Thence South 1,820.00 feet to a point having Coordinates of X = 2,405,630.00 and Y = 317,530.00; Thence West 5,418.10 feet to the beginning point containing approximately **148 acres**, all as more particularly outlined on a plat on file in the Office of Mineral Resources, Department of Natural Resources. All bearings, distances and coordinates are based on Louisiana Coordinate System of 1927, (North or South Zone), where applicable.

NOTE: The above description of the Tract nominated for lease has been provided and corrected, where required, exclusively by the nomination party. Any mineral lease selected from this Tract and awarded by the Louisiana State Mineral Board shall be without warranty of any kind, either express, implied, or statutory, including, but not limited to, the implied warranties of merchantability and fitness for a particular purpose. Should the mineral lease awarded by the Louisiana State Mineral Board be subsequently modified, cancelled or abrogated due to the existence of conflicting leases, operating agreements, private claims or other future obligations or conditions which may affect all or any portion of the leased Tract, it shall not relieve the Lessee of the obligation to pay any bonus due thereon to the Louisiana State Mineral Board, nor shall the Louisiana State Mineral Board be obligated to refund any consideration paid by the Lessor prior to such modification, cancellation, or abrogation, including, but not limited to, bonuses, rentals and royalties.

NOTE: The State of Louisiana does hereby reserve, and this lease shall be subject to, the imprescriptible right of surface use in the nature of a servitude in favor of the Department of Natural Resources, including its Offices and Commissions, for the sole purpose of implementing, constructing, servicing and maintaining approved coastal zone management and/or restoration projects. Utilization of any and all rights derived under this lease by the mineral lessee, its agents, successors or assigns, shall not interfere with nor hinder the reasonable surface use by the Department of Natural Resources, its Offices or Commissions, as herein above reserved.

NOTE: The Department of Wildlife and Fisheries has designated certain areas in the coastal waters of the State of Louisiana as Oyster Seed Bed Areas. The exact location of those Seed Bed Areas must be obtained from

the Department of Wildlife and Fisheries and any work done under a mineral lease from the State of Louisiana may necessarily be conducted in conformity with the rules and regulations promulgated by the said Department of Wildlife and Fisheries for Oyster Seed Bed Areas.

Applicant: MINERAL SERVICES, INC.

Bidder	Cash Payment	Price/ Acre	Rental	Oil	Gas	Other





**TRACT 39237 - St. Mary and Terrebonne Parishes, Louisiana**

All of the lands now or formerly constituting the beds and bottoms of all water bodies of every nature and description the title of which vests in the State of Louisiana, together with all islands arising therein and other lands formed by accretion or by reliction, where allowed by law, excepting tax adjudicated lands, and not presently under mineral lease on July 11, 2007, situated in St. Mary and Terrebonne Parishes, Louisiana, and more particularly described as follows: Beginning at a point having Coordinates of X = 2,014,566.70 and Y = 317,136.54; thence Northerly approximately 5,491 feet to the Southwest corner of State Lease No. 1337, as amended; thence Easterly approximately 7,922 feet along the South boundary of said State Lease No. 1337 to a point having a Coordinate of X = 2,022,488.40; thence South approximately 5,497 feet to a point having Coordinates of X = 2,022,488.40 and Y = 317,136.54; thence West 7,921.70 feet to the point of beginning, **LESS AND EXCEPT** that portion, if any, of State Lease No. 1337, as amended, which may lie within the above described tract, containing approximately **399 acres**, all as more particularly outlined on a plat on file in the Office of Mineral Resources, Department of Natural Resources. All bearings, distances and coordinates are based on Louisiana Coordinate System of 1927, (North or South Zone), where applicable.

NOTE: The above description of the Tract nominated for lease has been provided and corrected, where required, exclusively by the nomination party. Any mineral lease selected from this Tract and awarded by the Louisiana State Mineral Board shall be without warranty of any kind, either express, implied, or statutory, including, but not limited to, the implied warranties of merchantability and fitness for a particular purpose. Should the mineral lease awarded by the Louisiana State Mineral Board be subsequently modified, cancelled or abrogated due to the existence of conflicting leases, operating agreements, private claims or other future obligations or conditions which may affect all or any portion of the leased Tract, it shall not relieve the Lessee of the obligation to pay any bonus due thereon to the Louisiana State Mineral Board, nor shall the Louisiana State Mineral Board be obligated to refund any consideration paid by the Lessor prior to such modification, cancellation, or abrogation, including, but not limited to, bonuses, rentals and royalties.

NOTE: The State of Louisiana does hereby reserve, and this lease shall be subject to, the imprescriptible right of surface use in the nature of a servitude in favor of the Department of Natural Resources, including its Offices and Commissions, for the sole purpose of implementing, constructing, servicing and maintaining approved coastal zone management and/or restoration projects. Utilization of any and all rights derived under this lease by the mineral lessee, its agents, successors or assigns, shall not interfere with nor hinder the reasonable surface use by the Department of Natural Resources, its Offices or Commissions, as herein above reserved.

Applicant: THEOPHILUS OIL, GAS & LAND SERVICES, LLC

Bidder	Cash Payment	Price/ Acre	Rental	Oil	Gas	Other

**Legend**

- 07070017
- Active\_Leases
- Counties
- DOQQ2004

