

**TRACT 39208 - Cameron Parish, Louisiana**

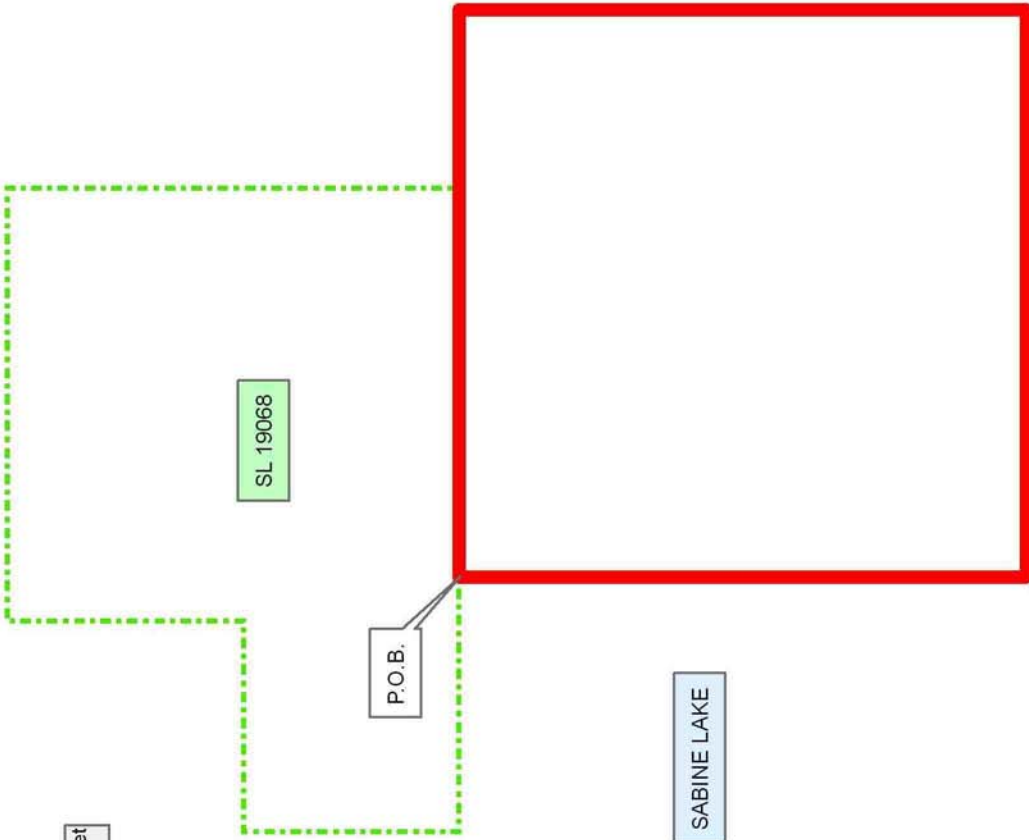
All of the lands now or formerly constituting the beds and bottoms of all water bodies of every nature and description the title of which vests in the State of Louisiana, together with all islands arising therein and other lands formed by accretion or by reliction, where allowed by law, excepting tax adjudicated lands, and not presently under mineral lease on July 11, 2007, situated in Cameron Parish, Louisiana, and more particularly described as follows: Beginning at the Southern boundary of State Lease No. 19068 at a point having Coordinates of X = 1,209,529.31 and Y = 442,940.00; thence East 4045.69 feet along the Southern boundary of State Lease No. 19068 to a point having coordinates X = 1,213,575.00 and Y = 442,940.00; thence East 1857.53 feet to a point having Coordinates of X = 1,215,432.53 and Y = 442,940.00; thence South 5,903.22 feet to a point having Coordinates of X = 1,215,432.53 and Y = 437,036.78; thence West 5,903.22 feet to a point having Coordinates of X = 1,209,529.31 and Y = 437,036.78; thence North 5,903.22 feet to the point of beginning, containing approximately **800.00 acres**, all as more particularly outlined on a plat on file in the Office of Mineral Resources, Department of Natural Resources. All bearings, distances and coordinates are based on Louisiana Coordinate System of 1927, (North or South Zone), where applicable.

NOTE: The above description of the Tract nominated for lease has been provided and corrected, where required, exclusively by the nomination party. Any mineral lease selected from this Tract and awarded by the Louisiana State Mineral Board shall be without warranty of any kind, either express, implied, or statutory, including, but not limited to, the implied warranties of merchantability and fitness for a particular purpose. Should the mineral lease awarded by the Louisiana State Mineral Board be subsequently modified, cancelled or abrogated due to the existence of conflicting leases, operating agreements, private claims or other future obligations or conditions which may affect all or any portion of the leased Tract, it shall not relieve the Lessee of the obligation to pay any bonus due thereon to the Louisiana State Mineral Board, nor shall the Louisiana State Mineral Board be obligated to refund any consideration paid by the Lessor prior to such modification, cancellation, or abrogation, including, but not limited to, bonuses, rentals and royalties.

NOTE: The State of Louisiana does hereby reserve, and this lease shall be subject to, the imprescriptible right of surface use in the nature of a servitude in favor of the Department of Natural Resources, including its Offices and Commissions, for the sole purpose of implementing, constructing, servicing and maintaining approved coastal zone management and/or restoration projects. Utilization of any and all rights derived under this lease by the mineral lessee, its agents, successors or assigns, shall not interfere with nor hinder the reasonable surface use by the Department of Natural Resources, its Offices or Commissions, as herein above reserved.

Applicant: STEPHEN M. JENKINS, INC.

Bidder	Cash Payment	Price/Acre	Rental	Oil	Gas	Other



**TRACT 39209 - Cameron Parish, Louisiana**

All of the lands now or formerly constituting the beds and bottoms of all water bodies of every nature and description the title of which vests in the State of Louisiana, together with all islands arising therein and other lands formed by accretion or by reliction, where allowed by law, excepting tax adjudicated lands, and not presently under mineral lease on July 11, 2007, situated in Cameron Parish, Louisiana, and more particularly described as follows: Beginning at the Southwest corner of State Lease No. 19068 at a point having Coordinates of X = 1,206,880.00 and Y = 442,940.00; thence East 2,649.31 feet along Southern boundary of State Lease No. 19068 at a point having Coordinates of X = 1,209,529.31 and Y = 442,940.00; thence South 7,848.47 feet to a point having Coordinates of X = 1,209,529.31 and Y = 435,091.53; thence West 5,777.47 feet to a point having Coordinates of X = 1,203,751.85 and Y = 435,091.53; thence North 4,494.47 feet to the Southern boundary of State Lease No. 19067 to a point having Coordinates of X = 1,203,751.85 and Y = 439,586.00; thence East 3,128.15 feet along Southern boundary of State Lease No. 19067 to the Southeast corner of State Lease No. 19067 to a point having Coordinates of X = 1,206,880.00 and Y = 439,586.00; thence North 3,354 feet to the point of beginning, containing approximately **800.10 acres**, all as more particularly outlined on a plat on file in the Office of Mineral Resources, Department of Natural Resources. All bearings, distances and coordinates are based on Louisiana Coordinate System of 1927, (North or South Zone), where applicable.

NOTE: The above description of the Tract nominated for lease has been provided and corrected, where required, exclusively by the nomination party. Any mineral lease selected from this Tract and awarded by the Louisiana State Mineral Board shall be without warranty of any kind, either express, implied, or statutory, including, but not limited to, the implied warranties of merchantability and fitness for a particular purpose. Should the mineral lease awarded by the Louisiana State Mineral Board be subsequently modified, cancelled or abrogated due to the existence of conflicting leases, operating agreements, private claims or other future obligations or conditions which may affect all or any portion of the leased Tract, it shall not relieve the Lessee of the obligation to pay any bonus due thereon to the Louisiana State Mineral Board, nor shall the Louisiana State Mineral Board be obligated to refund any consideration paid by the Lessor prior to such modification, cancellation, or abrogation, including, but not limited to, bonuses, rentals and royalties.

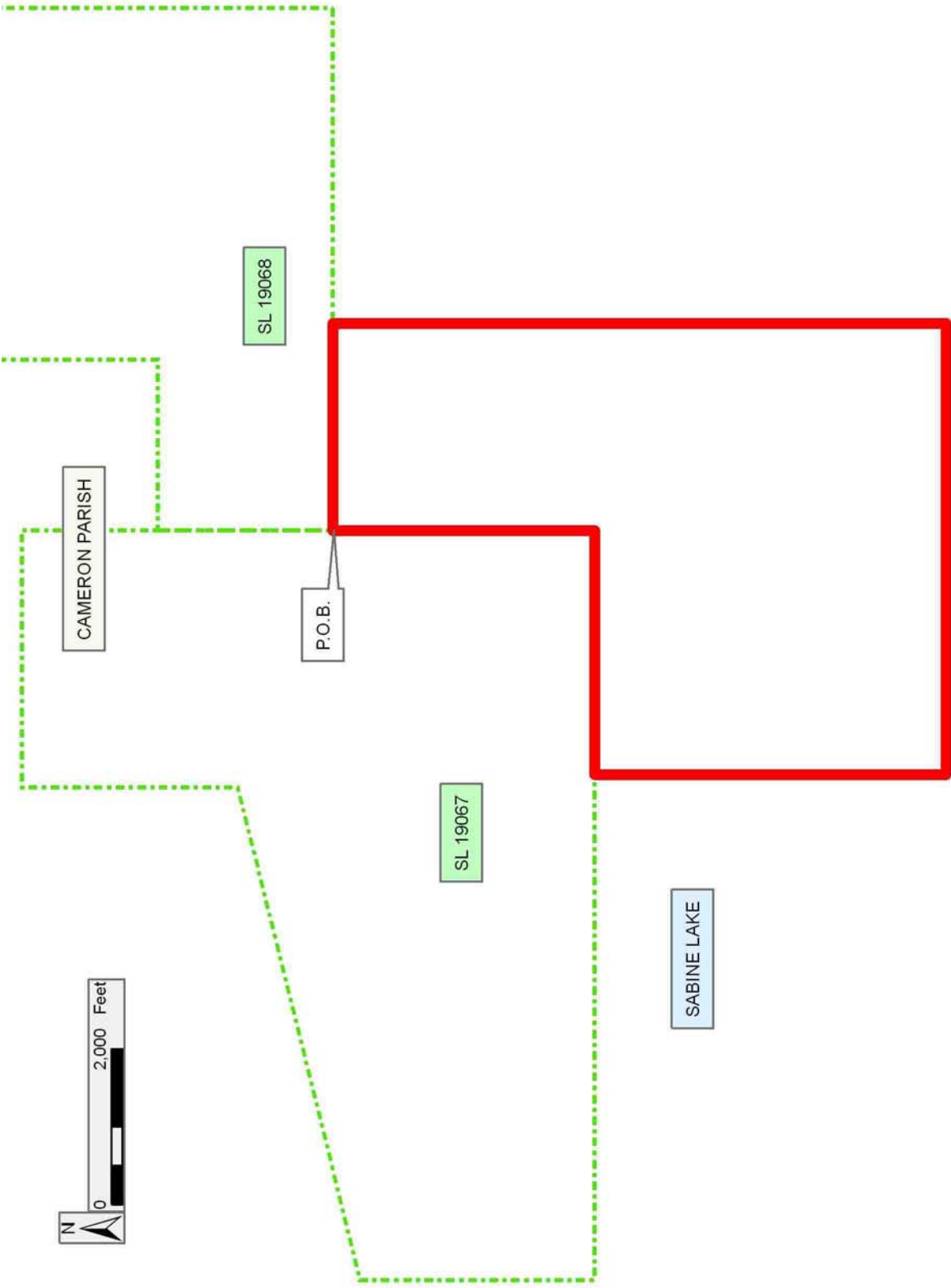
NOTE: The State of Louisiana does hereby reserve, and this lease shall be subject to, the imprescriptible right of surface use in the nature of a servitude in favor of the Department of Natural Resources, including its Offices and Commissions, for the sole purpose of implementing, constructing, servicing and maintaining approved coastal zone management and/or restoration projects. Utilization of any and all rights derived under this lease by the mineral lessee, its agents, successors or assigns, shall not interfere with nor hinder the reasonable surface use by the

Department of Natural Resources, its Offices or Commissions, as herein above reserved.

Applicant: STEPHEN M. JENKINS, INC.

Bidder	Cash Payment	Price/Acre	Rental	Oil	Gas	Other

**Legend**  
070700.44  
Active\_Leases



**TRACT 39210 - Cameron Parish, Louisiana**

All of the lands now or formerly constituting the beds and bottoms of all water bodies of every nature and description the title of which vests in the State of Louisiana, together with all islands arising therein and other lands formed by accretion or by reliction, where allowed by law, excepting tax adjudicated lands, and not presently under mineral lease on July 11, 2007, situated in Cameron Parish, Louisiana, and more particularly described as follows: Beginning at the Texas-Louisiana boundary at a point having Coordinates of X = 1,192,035.60 and Y = 440,970.00; thence East 2,524.40 feet to the Northwest corner of State Lease No. 19095 at a point having Coordinates of X = 1,194,560.00 and Y = 440,970.00; thence South 3,000 feet to the Southwest corner of State Lease No. 19095 to a point having Coordinates of X = 1,194,560.00 and Y = 437,970.00; thence East 341.73 feet along the Southern boundary of State Lease No. 19095 to a point having Coordinates of X = 1,194,901.73 and Y = 437,970.00; thence South 2,878.47 feet to a point having Coordinates of X = 1,194,901.73 and Y = 435,091.53; thence West 10,525.69 feet to a point on the Texas-Louisiana boundary having Coordinates of X = 1,184,376.04 and Y = 435,091.53; thence Northeasterly along the Texas-Louisiana boundary the following courses: North 43 degrees 06 minutes 18 seconds East 203.35 feet to a point having Coordinates of X = 1,184,515.00 and Y = 435,240.00; North 48 degrees 43 minutes 09 seconds East 5,395.98 feet to a point having Coordinates X = 1,188,570.00 and Y = 438,800.00; North 52 degrees 24 minutes 41 seconds East 1,754.14 feet to a point having Coordinates of X = 1,189,960.00 and Y = 439,870.00; North 62 degrees 17 minutes 00 seconds East 2,225.34 feet to a point having Coordinates of X = 1,191,930.00 and Y = 440,905.00 and North 58 degrees 23 minutes 11 seconds East 124.00 feet to the point of beginning, containing approximately **932.10 acres, LESS AND EXCEPT** that portion thereof, if any, located West of the boundary line between the States of Texas and Louisiana as determined by the report of the Special Master and adjudicated by the Supreme Court of the United States in litigation styled **Texas v. Louisiana, et al No. 36 Original**, or as otherwise approved by said court, all as more particularly outlined on a plat on file in the Office of Mineral Resources, Department of Natural Resources. All bearings, distances and coordinates are based on Louisiana Coordinate System of 1927, (North or South Zone), where applicable.

NOTE: The above description of the Tract nominated for lease has been provided and corrected, where required, exclusively by the nomination party. Any mineral lease selected from this Tract and awarded by the Louisiana State Mineral Board shall be without warranty of any kind, either express, implied, or statutory, including, but not limited to, the implied warranties of merchantability and fitness for a particular purpose. Should the mineral lease awarded by the Louisiana State Mineral Board be subsequently modified, cancelled or abrogated due to the existence of conflicting leases, operating agreements, private claims or other future obligations or conditions which may affect all or any portion of the leased Tract, it shall not relieve the Lessee of the obligation to

pay any bonus due thereon to the Louisiana State Mineral Board, nor shall the Louisiana State Mineral Board be obligated to refund any consideration paid by the Lessor prior to such modification, cancellation, or abrogation, including, but not limited to, bonuses, rentals and royalties.

NOTE: The State of Louisiana does hereby reserve, and this lease shall be subject to, the imprescriptible right of surface use in the nature of a servitude in favor of the Department of Natural Resources, including its Offices and Commissions, for the sole purpose of implementing, constructing, servicing and maintaining approved coastal zone management and/or restoration projects. Utilization of any and all rights derived under this lease by the mineral lessee, its agents, successors or assigns, shall not interfere with nor hinder the reasonable surface use by the Department of Natural Resources, its Offices or Commissions, as herein above reserved.

Applicant: STEPHEN M. JENKINS, INC.

Bidder	Cash Payment	Price/Acre	Rental	Oil	Gas	Other





P.O.B.

SL 19095

CAMERON PARISH

SABINE LAKE

**TRACT 39211 - Cameron Parish, Louisiana**

All of the lands now or formerly constituting the beds and bottoms of all water bodies of every nature and description the title of which vests in the State of Louisiana, together with all islands arising therein and other lands formed by accretion or by reliction, where allowed by law, excepting tax adjudicated lands, and not presently under mineral lease on July 11, 2007, situated in Cameron Parish, Louisiana, and more particularly described as follows: Beginning at the intersection of the Eastern boundary of State Lease No. 19095 and the Southern boundary of State Lease No. 19067 at a point having Coordinates of X = 1,197,960.00 and Y = 439,586.00; thence East 5,791.85 feet along Southern boundary of State Lease No. 19067 at a point having Coordinates of X = 1,203,751.85 and Y = 439,586.00; thence South 4,494.47 feet to a point having Coordinates of X = 1,203,751.85 and Y = 435,091.53; thence West 8,850.11 feet to a point having Coordinates of X = 1,194,901.73 and Y = 435,091.53; thence North 2,878.47 feet to the Southern boundary of State Lease No. 19095 to a point having Coordinates of X = 1,194,901.73 and Y = 437,970.00; thence East 3,058.27 feet along Southern boundary of State Lease No. 19095 to a point having Coordinates of X = 1,197,960.00 and Y = 437,970.00; thence North 1,616 feet to the point of beginning, containing approximately **799.69 acres**, all as more particularly outlined on a plat on file in the Office of Mineral Resources, Department of Natural Resources. All bearings, distances and coordinates are based on Louisiana Coordinate System of 1927, (North or South Zone), where applicable.

NOTE: The above description of the Tract nominated for lease has been provided and corrected, where required, exclusively by the nomination party. Any mineral lease selected from this Tract and awarded by the Louisiana State Mineral Board shall be without warranty of any kind, either express, implied, or statutory, including, but not limited to, the implied warranties of merchantability and fitness for a particular purpose. Should the mineral lease awarded by the Louisiana State Mineral Board be subsequently modified, cancelled or abrogated due to the existence of conflicting leases, operating agreements, private claims or other future obligations or conditions which may affect all or any portion of the leased Tract, it shall not relieve the Lessee of the obligation to pay any bonus due thereon to the Louisiana State Mineral Board, nor shall the Louisiana State Mineral Board be obligated to refund any consideration paid by the Lessor prior to such modification, cancellation, or abrogation, including, but not limited to, bonuses, rentals and royalties.

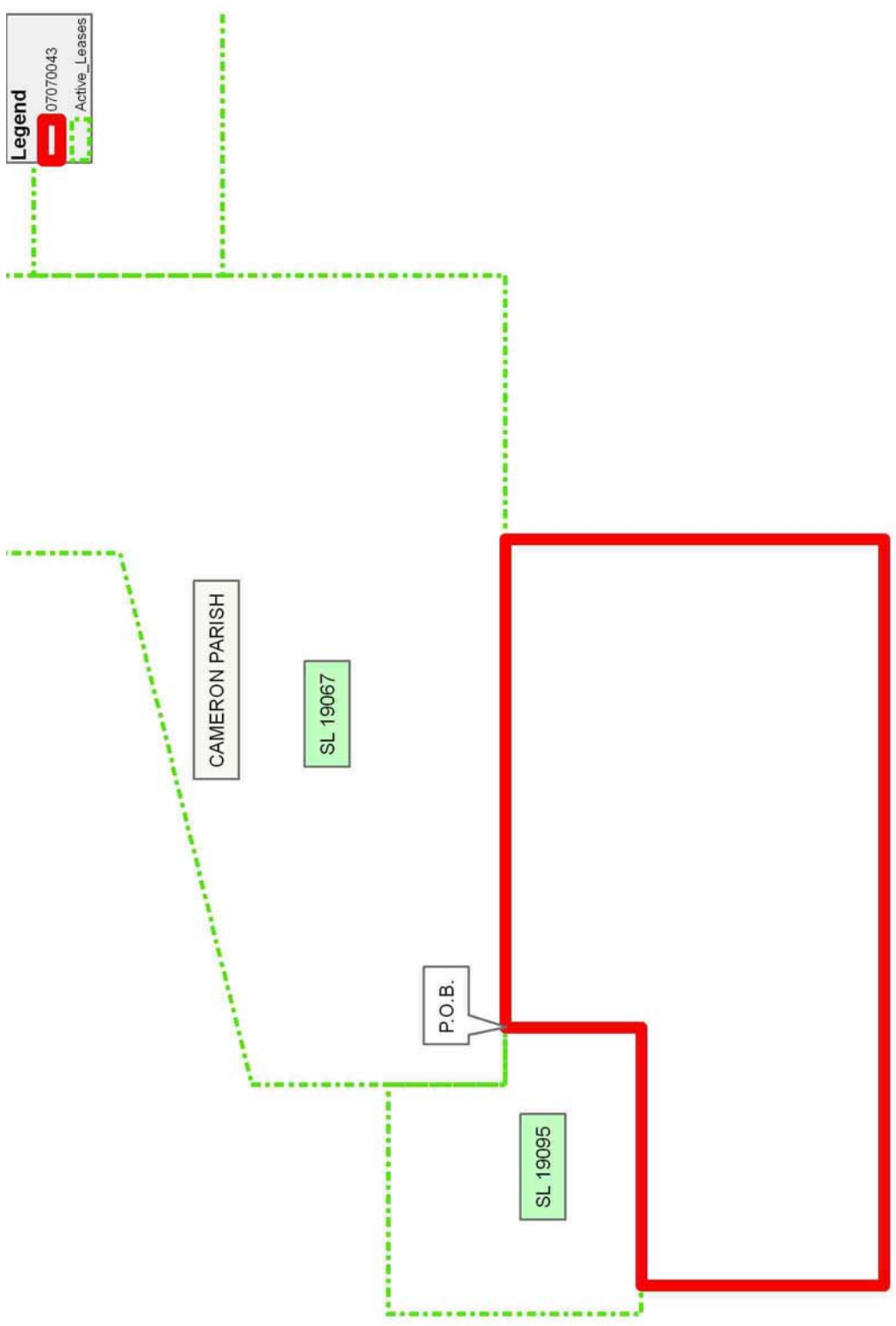
NOTE: The State of Louisiana does hereby reserve, and this lease shall be subject to, the imprescriptible right of surface use in the nature of a servitude in favor of the Department of Natural Resources, including its Offices and Commissions, for the sole purpose of implementing, constructing, servicing and maintaining approved coastal zone management and/or restoration projects. Utilization of any and all rights derived under this lease by the mineral lessee, its agents, successors or assigns, shall not interfere with nor hinder the reasonable surface use by the

Department of Natural Resources, its Offices or Commissions, as herein above reserved.

Applicant: STEPHEN M. JENKINS, INC.

Bidder	Cash Payment	Price/Acre	Rental	Oil	Gas	Other

**Legend**  
07070043  
Active\_Leases



**TRACT 39212 - Cameron Parish, Louisiana**

All of the lands now or formerly constituting the beds and bottoms of all water bodies of every nature and description the title of which vests in the State of Louisiana, together with all islands arising therein and other lands formed by accretion or by reliction, where allowed by law, excepting tax adjudicated lands, and not presently under mineral lease on July 11, 2007, situated in Cameron Parish, Louisiana, and more particularly described as follows: Beginning at a point having Coordinates of X = 1,209,529.31 and Y = 437,036.78; thence East 5,903.22 feet to a point having Coordinates of X = 1,215,432.53 and Y = 437,036.78; thence North 478.48 feet to a point having Coordinates of X = 1,215,432.53 and Y = 437,515.26; thence East 6,747.54 feet to a point having Coordinates of X = 1,222,180.07 and Y = 437,515.26; thence South 29 degrees 25 minutes 24 seconds West 637.65 feet to a point having Coordinates of X = 1,221,866.83 and Y = 436,959.86; thence South 61 degrees 59 minutes 25 seconds West 846.29 feet to a point having Coordinates of X = 1,221,119.67 and Y = 436,562.43; thence South 38 degrees 39 minutes 16 seconds West 8059.69 feet to a point having Coordinates of X = 1,216,085.40 and Y = 430,268.41; thence West 2,496.67 feet to a point having Coordinates of X = 1,213,588.73 and Y = 430,268.41; thence North 45 degrees 00 minutes 00 seconds East 6,820.93 feet to a point having Coordinates of X = 1,218,411.85 and Y = 435,091.53; thence West 8,882.54 feet to a point having Coordinates of X = 1,209,529.31 and Y = 435,091.53; thence North 1,945.25 feet to the point of beginning, containing approximately **699 acres**, all as more particularly outlined on a plat on file in the Office of Mineral Resources, Department of Natural Resources. All bearings, distances and coordinates are based on Louisiana Coordinate System of 1927, (North or South Zone), where applicable.

NOTE: The above description of the Tract nominated for lease has been provided and corrected, where required, exclusively by the nomination party. Any mineral lease selected from this Tract and awarded by the Louisiana State Mineral Board shall be without warranty of any kind, either express, implied, or statutory, including, but not limited to, the implied warranties of merchantability and fitness for a particular purpose. Should the mineral lease awarded by the Louisiana State Mineral Board be subsequently modified, cancelled or abrogated due to the existence of conflicting leases, operating agreements, private claims or other future obligations or conditions which may affect all or any portion of the leased Tract, it shall not relieve the Lessee of the obligation to pay any bonus due thereon to the Louisiana State Mineral Board, nor shall the Louisiana State Mineral Board be obligated to refund any consideration paid by the Lessor prior to such modification, cancellation, or abrogation, including, but not limited to, bonuses, rentals and royalties.

NOTE: The State of Louisiana does hereby reserve, and this lease shall be subject to, the imprescriptible right of surface use in the nature of a servitude in favor of the Department of Natural Resources, including its Offices and Commissions, for the sole purpose of implementing,

constructing, servicing and maintaining approved coastal zone management and/or restoration projects. Utilization of any and all rights derived under this lease by the mineral lessee, its agents, successors or assigns, shall not interfere with nor hinder the reasonable surface use by the Department of Natural Resources, its Offices or Commissions, as herein above reserved.

Applicant: STEPHEN M. JENKINS, INC.

Bidder	Cash Payment	Price/Acre	Rental	Oil	Gas	Other



**TRACT 39213 - Cameron Parish, Louisiana**

All of the lands now or formerly constituting the beds and bottoms of all water bodies of every nature and description the title of which vests in the State of Louisiana, together with all islands arising therein and other lands formed by accretion or by reliction, where allowed by law, excepting tax adjudicated lands, and not presently under mineral lease on July 11, 2007, situated in Cameron Parish, Louisiana, and more particularly described as follows: Beginning on the Texas-Louisiana boundary at a point having Coordinates of X = 1,184,376.04 and Y = 435,091.53; thence East 6,725.70 feet to a point having Coordinates of X = 1,191,101.74 and Y = 435,091.53; thence South 45 degrees 00 minutes 00 seconds West 8,348.41 feet to a point having Coordinates of X = 1,185,198.53 and Y = 429,188.31; thence West 6,211.49 feet to a point on the Texas-Louisiana boundary having Coordinates of X = 1,178,987.03 and Y = 429,188.31; thence Northeasterly along Texas-Louisiana boundary the following courses: North 21 degrees 23 minutes 27 seconds East 350.86 feet to a point having Coordinates of X = 1,179,115.00 and Y = 429,515.00; North 37 degrees 11 minutes 18 seconds East 2,159.03 feet to a point having Coordinates of X = 1,180,420.00 and Y = 431,235.00; North 44 degrees 11 minutes 15 seconds East 997.12 feet to a point having Coordinates of X = 1,181,115.00 and Y = 431,950.00; North 58 degrees 03 minutes 42 seconds East 907.36 feet to a point having Coordinates of X = 1,181,885.00 and Y = 432,430.00 and North 43 degrees 06 minutes 18 seconds East 3,645.42 feet to the point of beginning, containing approximately **900.40 acres, LESS AND EXCEPT** that portion thereof, if any, located West of the boundary line between the States of Texas and Louisiana as determined by the report of the Special Master and adjudicated by the Supreme Court of the United States in litigation styled **Texas v. Louisiana, et al No. 36 Original**, or as otherwise approved by said court, all as more particularly outlined on a plat on file in the Office of Mineral Resources, Department of Natural Resources. All bearings, distances and coordinates are based on Louisiana Coordinate System of 1927, (North or South Zone), where applicable.

NOTE: The above description of the Tract nominated for lease has been provided and corrected, where required, exclusively by the nomination party. Any mineral lease selected from this Tract and awarded by the Louisiana State Mineral Board shall be without warranty of any kind, either express, implied, or statutory, including, but not limited to, the implied warranties of merchantability and fitness for a particular purpose. Should the mineral lease awarded by the Louisiana State Mineral Board be subsequently modified, cancelled or abrogated due to the existence of conflicting leases, operating agreements, private claims or other future obligations or conditions which may affect all or any portion of the leased Tract, it shall not relieve the Lessee of the obligation to pay any bonus due thereon to the Louisiana State Mineral Board, nor shall the Louisiana State Mineral Board be obligated to refund any consideration paid by the Lessor prior to such modification, cancellation, or abrogation, including, but not limited to, bonuses, rentals and royalties.



NOTE: The State of Louisiana does hereby reserve, and this lease shall be subject to, the imprescriptible right of surface use in the nature of a servitude in favor of the Department of Natural Resources, including its Offices and Commissions, for the sole purpose of implementing, constructing, servicing and maintaining approved coastal zone management and/or restoration projects. Utilization of any and all rights derived under this lease by the mineral lessee, its agents, successors or assigns, shall not interfere with nor hinder the reasonable surface use by the Department of Natural Resources, its Offices or Commissions, as herein above reserved.

Applicant: STEPHEN M. JENKINS, INC.

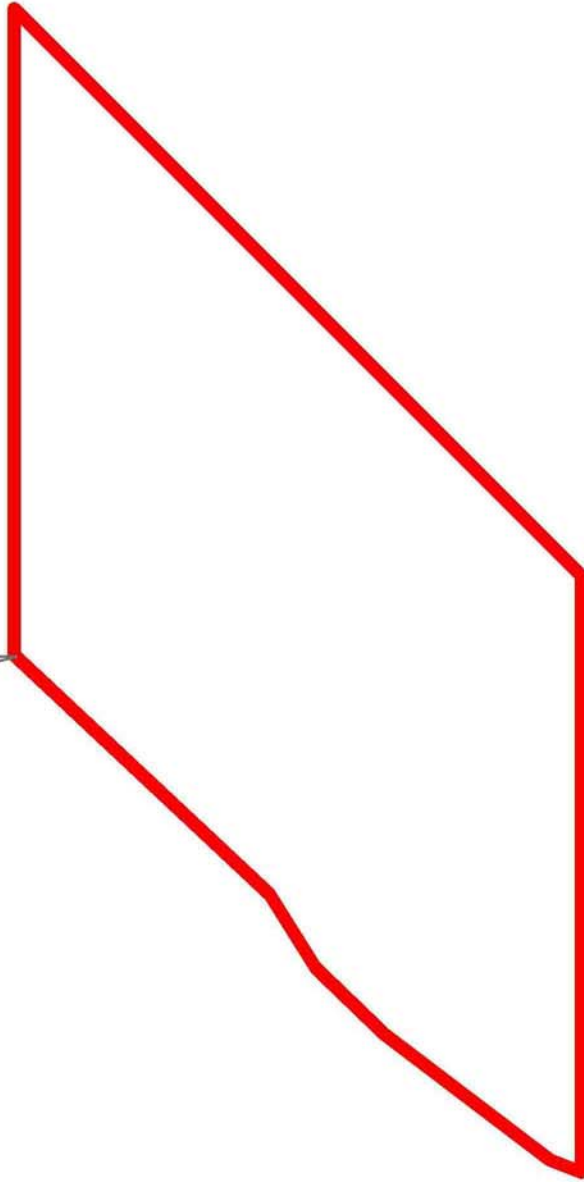
Bidder	Cash Payment	Price/Acre	Rental	Oil	Gas	Other



CAMERON PARISH

SABINE LAKE

P.O.B.



**TRACT 39214 - Cameron Parish, Louisiana**

All of the lands now or formerly constituting the beds and bottoms of all water bodies of every nature and description the title of which vests in the State of Louisiana, together with all islands arising therein and other lands formed by accretion or by reliction, where allowed by law, excepting tax adjudicated lands, and not presently under mineral lease on July 11, 2007, situated in Cameron Parish, Louisiana, and more particularly described as follows: Beginning at a point having Coordinates of X = 1,191,101.74 and Y = 435,091.53; thence East 5,903.22 feet to a point having Coordinates of X = 1,197,004.96 feet and Y = 435,091.53; thence South 45 degrees 00 minutes 00 seconds West 8,348.41 feet to a point having Coordinates of X = 1,191,101.74 and Y = 429,188.31; thence West 5,903.22 feet to a point having Coordinates of X = 1,185,198.53 and Y = 429,188.31; thence North 45 degrees 00 minutes 00 seconds East 8,348.41 feet to the point of beginning, containing approximately **800.00 acres**, all as more particularly outlined on a plat on file in the Office of Mineral Resources, Department of Natural Resources. All bearings, distances and coordinates are based on Louisiana Coordinate System of 1927, (North or South Zone), where applicable.

NOTE: The above description of the Tract nominated for lease has been provided and corrected, where required, exclusively by the nomination party. Any mineral lease selected from this Tract and awarded by the Louisiana State Mineral Board shall be without warranty of any kind, either express, implied, or statutory, including, but not limited to, the implied warranties of merchantability and fitness for a particular purpose. Should the mineral lease awarded by the Louisiana State Mineral Board be subsequently modified, cancelled or abrogated due to the existence of conflicting leases, operating agreements, private claims or other future obligations or conditions which may affect all or any portion of the leased Tract, it shall not relieve the Lessee of the obligation to pay any bonus due thereon to the Louisiana State Mineral Board, nor shall the Louisiana State Mineral Board be obligated to refund any consideration paid by the Lessor prior to such modification, cancellation, or abrogation, including, but not limited to, bonuses, rentals and royalties.

NOTE: The State of Louisiana does hereby reserve, and this lease shall be subject to, the imprescriptible right of surface use in the nature of a servitude in favor of the Department of Natural Resources, including its Offices and Commissions, for the sole purpose of implementing, constructing, servicing and maintaining approved coastal zone management and/or restoration projects. Utilization of any and all rights derived under this lease by the mineral lessee, its agents, successors or assigns, shall not interfere with nor hinder the reasonable surface use by the Department of Natural Resources, its Offices or Commissions, as herein above reserved.

Applicant: STEPHEN M. JENKINS, INC.

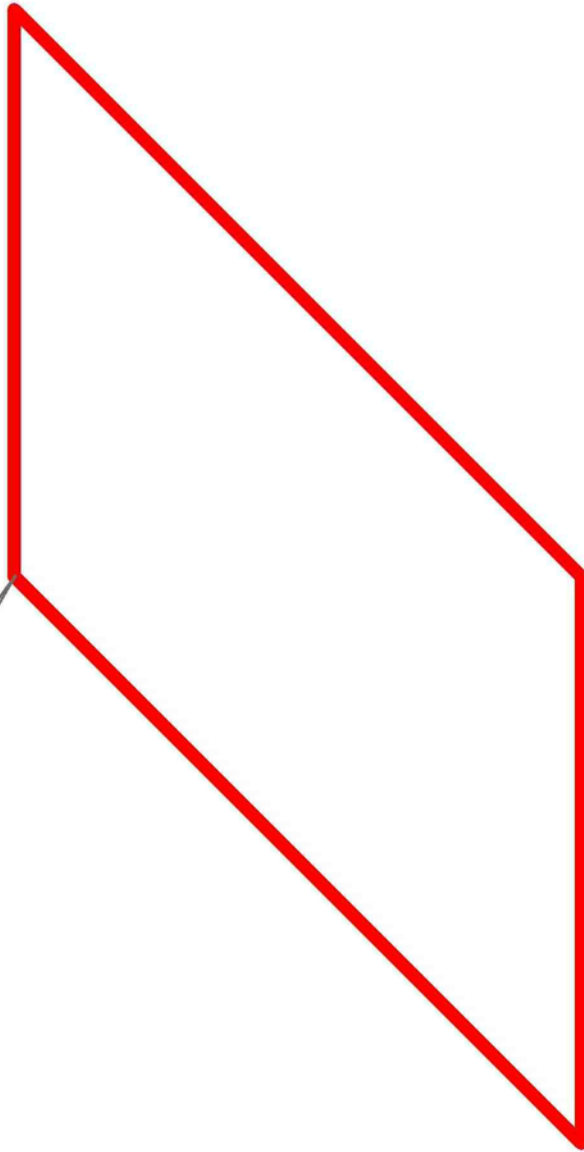
Bidder	Cash Payment	Price/Acre	Rental	Oil	Gas	Other



CAMERON PARISH

SABINE LAKE

P.O.B.



**TRACT 39215 - Cameron Parish, Louisiana**

All of the lands now or formerly constituting the beds and bottoms of all water bodies of every nature and description the title of which vests in the State of Louisiana, together with all islands arising therein and other lands formed by accretion or by reliction, where allowed by law, excepting tax adjudicated lands, and not presently under mineral lease on July 11, 2007, situated in Cameron Parish, Louisiana, and more particularly described as follows: Beginning at a point having Coordinates of X = 1,197,004.96 and Y = 435,091.53; thence East 5,903.22 feet to a point having Coordinates of X = 1,202,908.18 and Y = 435,091.53; thence South 45 degrees 00 minutes 00 seconds West 8,348.41 feet to a point having Coordinates of X = 1,197,004.96 and Y = 429,188.31; thence West 5,903.22 feet to a point having Coordinates of X = 1,191,101.74 and Y = 429,188.31; thence North 45 degrees 00 minutes 00 seconds East 8,348.41 feet to the point of beginning, containing approximately **800.00 acres**, all as more particularly outlined on a plat on file in the Office of Mineral Resources, Department of Natural Resources. All bearings, distances and coordinates are based on Louisiana Coordinate System of 1927, (North or South Zone), where applicable.

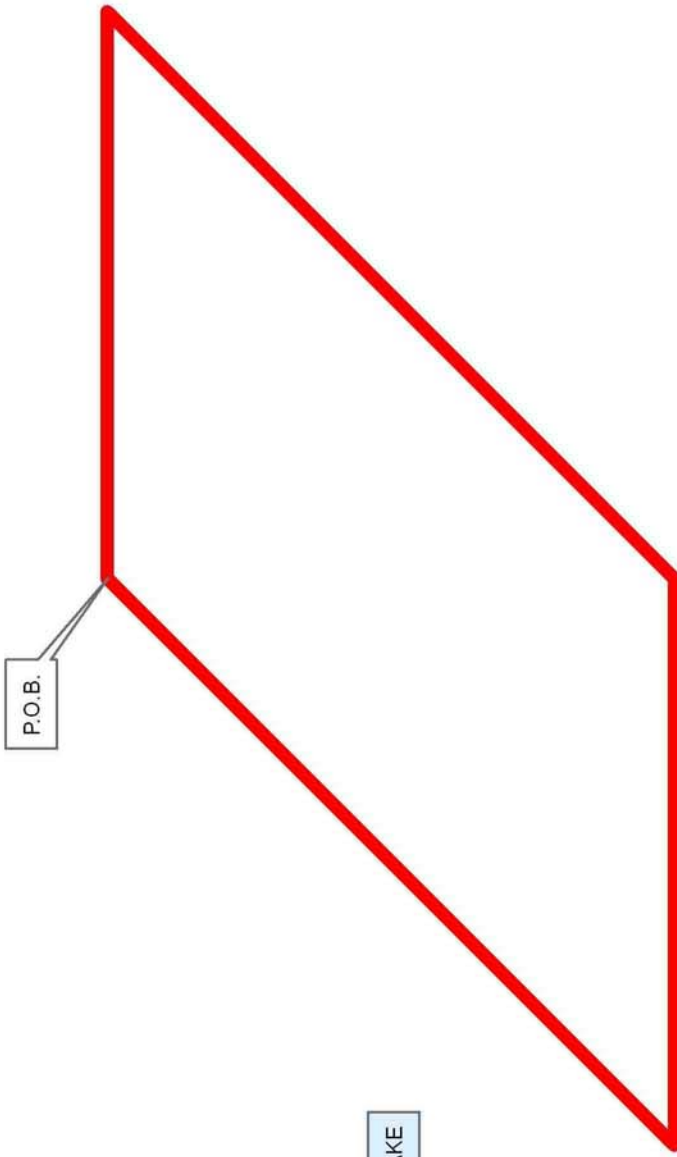
NOTE: The above description of the Tract nominated for lease has been provided and corrected, where required, exclusively by the nomination party. Any mineral lease selected from this Tract and awarded by the Louisiana State Mineral Board shall be without warranty of any kind, either express, implied, or statutory, including, but not limited to, the implied warranties of merchantability and fitness for a particular purpose. Should the mineral lease awarded by the Louisiana State Mineral Board be subsequently modified, cancelled or abrogated due to the existence of conflicting leases, operating agreements, private claims or other future obligations or conditions which may affect all or any portion of the leased Tract, it shall not relieve the Lessee of the obligation to pay any bonus due thereon to the Louisiana State Mineral Board, nor shall the Louisiana State Mineral Board be obligated to refund any consideration paid by the Lessor prior to such modification, cancellation, or abrogation, including, but not limited to, bonuses, rentals and royalties.

NOTE: The State of Louisiana does hereby reserve, and this lease shall be subject to, the imprescriptible right of surface use in the nature of a servitude in favor of the Department of Natural Resources, including its Offices and Commissions, for the sole purpose of implementing, constructing, servicing and maintaining approved coastal zone management and/or restoration projects. Utilization of any and all rights derived under this lease by the mineral lessee, its agents, successors or assigns, shall not interfere with nor hinder the reasonable surface use by the Department of Natural Resources, its Offices or Commissions, as herein above reserved.

Applicant: STEPHEN M. JENKINS, INC.

Bidder	Cash Payment	Price/Acre	Rental	Oil	Gas	Other

CAMERON PARISH



SABINE LAKE



**TRACT 39216 - Cameron Parish, Louisiana**

All of the lands now or formerly constituting the beds and bottoms of all water bodies of every nature and description the title of which vests in the State of Louisiana, together with all islands arising therein and other lands formed by accretion or by reliction, where allowed by law, excepting tax adjudicated lands, and not presently under mineral lease on July 11, 2007, situated in Cameron Parish, Louisiana, and more particularly described as follows: Beginning at a point having Coordinates of X = 1,208,811.40 and Y = 435,091.53; thence East 3,697.23 feet to a point having Coordinates of X = 1,212,508.63 and Y = 435,091.53; thence South 45 degrees 00 minutes 00 seconds West 8,348.41 feet to a point having Coordinates of X = 1,206,605.41 feet and Y = 429,188.31 feet; thence South 61 degrees 26 minutes 27 seconds West 2140.02 feet to a point having Coordinates of X = 1,204,725.79 and Y = 428,165.24; thence West 10,255.34 feet to a point having Coordinates of X = 1,194,470.45 and Y = 428,165.24; thence North 28 degrees 40 minutes 23 seconds East 1,166.07 feet to a point having Coordinates of X = 1,195,029.95 and Y = 429,188.31; thence East 7,878.24 feet to a point having Coordinates of X = 1,202,908.18 and Y = 429,188.31; thence North 45 degrees 00 minutes 00 seconds East 8,348.41 to the point of beginning, containing approximately **729 acres**, all as more particularly outlined on a plat on file in the Office of Mineral Resources, Department of Natural Resources. All bearings, distances and coordinates are based on Louisiana Coordinate System of 1927, (North or South Zone), where applicable.

NOTE: The above description of the Tract nominated for lease has been provided and corrected, where required, exclusively by the nomination party. Any mineral lease selected from this Tract and awarded by the Louisiana State Mineral Board shall be without warranty of any kind, either express, implied, or statutory, including, but not limited to, the implied warranties of merchantability and fitness for a particular purpose. Should the mineral lease awarded by the Louisiana State Mineral Board be subsequently modified, cancelled or abrogated due to the existence of conflicting leases, operating agreements, private claims or other future obligations or conditions which may affect all or any portion of the leased Tract, it shall not relieve the Lessee of the obligation to pay any bonus due thereon to the Louisiana State Mineral Board, nor shall the Louisiana State Mineral Board be obligated to refund any consideration paid by the Lessor prior to such modification, cancellation, or abrogation, including, but not limited to, bonuses, rentals and royalties.

NOTE: The State of Louisiana does hereby reserve, and this lease shall be subject to, the imprescriptible right of surface use in the nature of a servitude in favor of the Department of Natural Resources, including its Offices and Commissions, for the sole purpose of implementing, constructing, servicing and maintaining approved coastal zone management and/or restoration projects. Utilization of any and all rights derived under this lease by the mineral lessee, its agents, successors or assigns, shall not interfere with nor hinder the reasonable surface use by the

Department of Natural Resources, its Offices or Commissions, as herein above reserved.

Applicant: STEPHEN M. JENKINS, INC.

Bidder	Cash Payment	Price/Acre	Rental	Oil	Gas	Other



CAMERON PARISH

SABINE LAKE

P.O.B.

T14S - R15W

**TRACT 39217 - Cameron Parish, Louisiana**

All of the lands now or formerly constituting the beds and bottoms of all water bodies of every nature and description the title of which vests in the State of Louisiana, together with all islands arising therein and other lands formed by accretion or by reliction, where allowed by law, excepting tax adjudicated lands, and not presently under mineral lease on July 11, 2007, situated in Cameron Parish, Louisiana, and more particularly described as follows: Beginning at a point having Coordinates of X = 1,202,908.18 and Y = 435,091.53; thence East 5,903.22 feet to a point having Coordinates of X = 1,208,811.40 and Y = 435,091.53; thence South 45 degrees 00 minutes 00 seconds West 8,348.41 feet to a point having Coordinates of X = 1,202,908.18 and Y = 429,188.31; thence West 5,903.22 feet to a point having Coordinates of X = 1,197,004.96 and Y = 429,188.31; thence North 45 degrees 00 minutes 00 seconds East 8,348.41 feet to the point of beginning, containing approximately **800.00 acres**, all as more particularly outlined on a plat on file in the Office of Mineral Resources, Department of Natural Resources. All bearings, distances and coordinates are based on Louisiana Coordinate System of 1927, (North or South Zone), where applicable.

NOTE: The above description of the Tract nominated for lease has been provided and corrected, where required, exclusively by the nomination party. Any mineral lease selected from this Tract and awarded by the Louisiana State Mineral Board shall be without warranty of any kind, either express, implied, or statutory, including, but not limited to, the implied warranties of merchantability and fitness for a particular purpose. Should the mineral lease awarded by the Louisiana State Mineral Board be subsequently modified, cancelled or abrogated due to the existence of conflicting leases, operating agreements, private claims or other future obligations or conditions which may affect all or any portion of the leased Tract, it shall not relieve the Lessee of the obligation to pay any bonus due thereon to the Louisiana State Mineral Board, nor shall the Louisiana State Mineral Board be obligated to refund any consideration paid by the Lessor prior to such modification, cancellation, or abrogation, including, but not limited to, bonuses, rentals and royalties.

NOTE: The State of Louisiana does hereby reserve, and this lease shall be subject to, the imprescriptible right of surface use in the nature of a servitude in favor of the Department of Natural Resources, including its Offices and Commissions, for the sole purpose of implementing, constructing, servicing and maintaining approved coastal zone management and/or restoration projects. Utilization of any and all rights derived under this lease by the mineral lessee, its agents, successors or assigns, shall not interfere with nor hinder the reasonable surface use by the Department of Natural Resources, its Offices or Commissions, as herein above reserved.

Applicant: STEPHEN M. JENKINS, INC.

Bidder	Cash Payment	Price/Acre	Rental	Oil	Gas	Other



CAMERON PARISH

SABINE LAKE

P.O.B.

