

TRACT 39198 - Caddo Parish, Louisiana

All of the lands now or formerly constituting the beds and bottoms of all water bodies of every nature and description the title of which vests in the State of Louisiana, together with all islands arising therein and other lands formed by accretion or by reliction, where allowed by law, excepting tax adjudicated lands, and not presently under mineral lease on July 11, 2007, situated in Caddo Parish, Louisiana, and more particularly described as follows: Beginning at a point having Coordinates of X = 1,581,134.93 and Y = 743,290.94; thence East 5,407.56 feet to the Southwest corner of State Lease No.18980 having Coordinates of X = 1,586,542.49 and Y = 743,290.94; thence South 89 degrees 07 minutes 36 seconds East 10,433.65 feet along the South boundary of said State Lease No. 18980 to a point having Coordinates of X = 1,596,974.93 and Y = 743,131.91; thence South 15,243.91 feet to a point having Coordinates of X = 1,596,974.93 and Y = 727,888.00; thence West 10,560.00 feet to a point having Coordinates of X = 1,586,414.93 and Y = 727,888.00; thence North 5,280.00 feet to a point having Coordinates of X = 1,586,414.93 and Y = 733,168.00; thence West 5,280.00 feet to a point having Coordinates of X = 1,581,134.93 and Y = 733,168.00; thence North 10,122.94 feet to the point of beginning, **LESS AND EXCEPT** any portion of the Soda Lake Wildlife Management Area that may lie within the above described tract, containing approximately **10 acres**, all as more particularly outlined on a plat on file in the Office of Mineral Resources, Department of Natural Resources. All bearings, distances and coordinates are based on Louisiana Coordinate System of 1927, (North or South Zone), where applicable.

NOTE: The above description of the Tract nominated for lease has been provided and corrected, where required, exclusively by the nomination party. Any mineral lease selected from this Tract and awarded by the Louisiana State Mineral Board shall be without warranty of any kind, either express, implied, or statutory, including, but not limited to, the implied warranties of merchantability and fitness for a particular purpose. Should the mineral lease awarded by the Louisiana State Mineral Board be subsequently modified, cancelled or abrogated due to the existence of conflicting leases, operating agreements, private claims or other future obligations or conditions which may affect all or any portion of the leased Tract, it shall not relieve the Lessee of the obligation to pay any bonus due thereon to the Louisiana State Mineral Board, nor shall the Louisiana State Mineral Board be obligated to refund any consideration paid by the Lessor prior to such modification, cancellation, or abrogation, including, but not limited to, bonuses, rentals and royalties.

Bidder	Cash Payment	Price/ Acre	Rental	Oil	Gas	Other

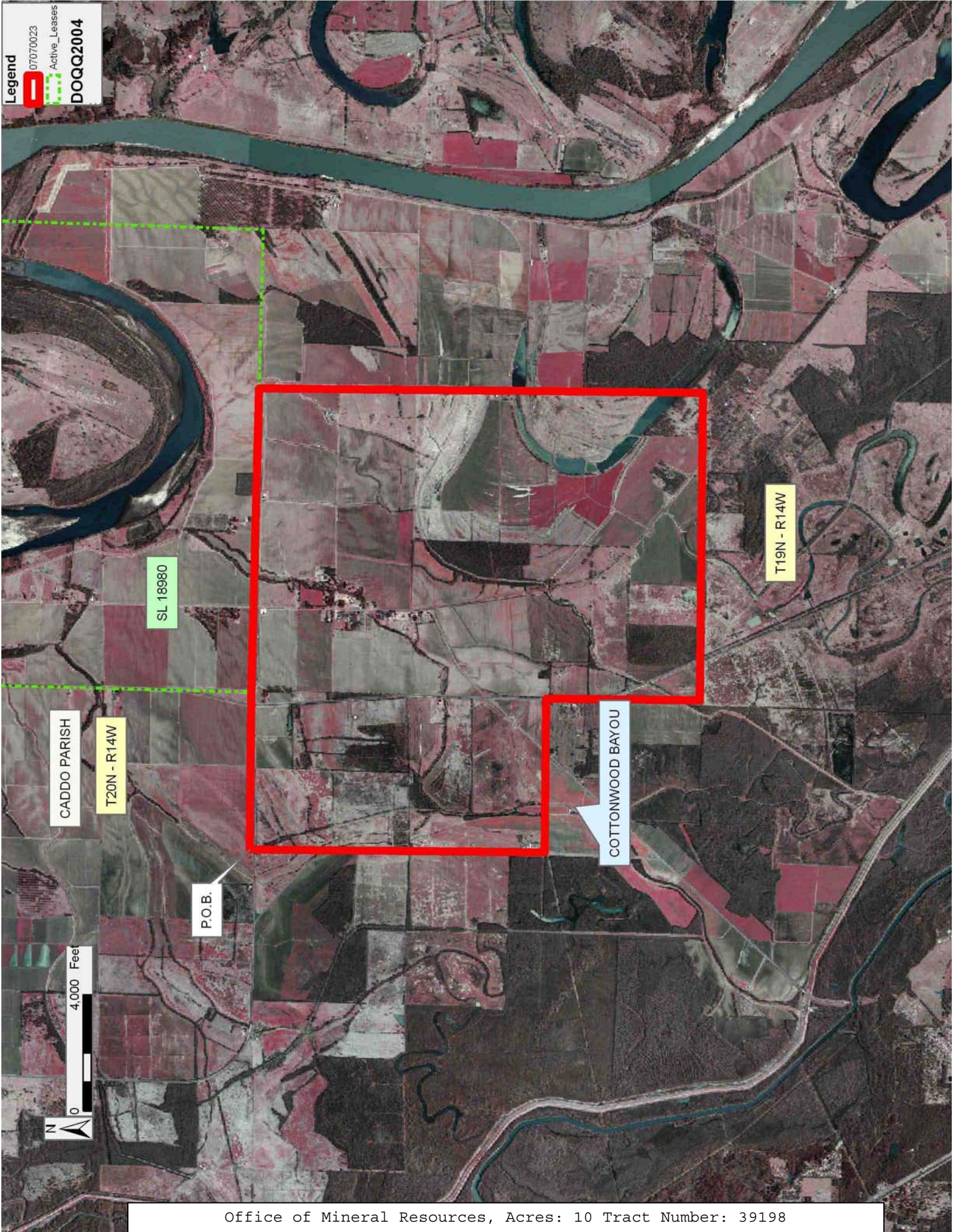
Applicant: RICHARD J. HAMILTON, II

Legend

07070023

Active_Leases

DOQQ2004



TRACT 39199 - Caddo Parish, Louisiana

All of the lands now or formerly constituting the beds and bottoms of all water bodies of every nature and description the title of which vests in the State of Louisiana, together with all islands arising therein and other lands formed by accretion or by reliction, where allowed by law, excepting tax adjudicated lands, and not presently under mineral lease on July 11, 2007, situated in Caddo Parish, Louisiana, and more particularly described as follows: Beginning at a point having Coordinates of X = 1,570,074.93 and Y = 733,168.00; thence East 16,340.00 feet to a point having Coordinates of X = 1,586,414.93 and Y = 733,168.00; thence South 15,558.31 feet to a point on the North boundary of State Lease No. 19306 having Coordinates of X = 1,586,414.93 and Y = 717,609.69; thence West 500.00 feet along the North boundary of said State Lease No. 19306 to its Northwest corner having Coordinates of X = 1,585,914.93 and Y = 717,609.69; thence South 500.00 feet along the West boundary of said State Lease No. 19306 to a point having Coordinates of X = 1,585,914.93 and Y = 717,109.69; thence West 15,840.00 feet to a point having Coordinates of X = 1,570,074.93 and Y = 717,109.69; thence North 16,058.31 feet to the point of beginning, **LESS AND EXCEPT** any portion of the Soda Lake Wildlife Management Area that lies within the above described tract, containing approximately **52 acres**, all as more particularly outlined on a plat on file in the Office of Mineral Resources, Department of Natural Resources. All bearings, distances and coordinates are based on Louisiana Coordinate System of 1927, (North or South Zone), where applicable.

NOTE: The above description of the Tract nominated for lease has been provided and corrected, where required, exclusively by the nomination party. Any mineral lease selected from this Tract and awarded by the Louisiana State Mineral Board shall be without warranty of any kind, either express, implied, or statutory, including, but not limited to, the implied warranties of merchantability and fitness for a particular purpose. Should the mineral lease awarded by the Louisiana State Mineral Board be subsequently modified, cancelled or abrogated due to the existence of conflicting leases, operating agreements, private claims or other future obligations or conditions which may affect all or any portion of the leased Tract, it shall not relieve the Lessee of the obligation to pay any bonus due thereon to the Louisiana State Mineral Board, nor shall the Louisiana State Mineral Board be obligated to refund any consideration paid by the Lessor prior to such modification, cancellation, or abrogation, including, but not limited to, bonuses, rentals and royalties.

NOTE: This tract is located within the boundaries of a wildlife management area or refuge and any operations conducted thereon in conjunction with this mineral lease may be subject to rules and regulations promulgated by the Department of Wildlife and Fisheries for the protection of fish, birds and other wildlife including, but not necessarily limited to, the following:

1. No activities will be allowed without written authorization from the Louisiana Department of Wildlife and Fisheries. All projects will be

coordinated and approved by the appropriate WMA Supervisor prior to any activities on the wildlife management area.

2. Proposed projects will be evaluated on a case by case basis. Modifications to proposed projects may be required including, but not limited to, access routes, spoil placement, well sites, flow lines and other appurtenant structures required by the Louisiana Department of Wildlife and Fisheries.

3. Compensatory mitigation will be required to offset unavoidable wetland impacts.

4. Removal of all structures, facilities, and equipment will be required within 120 days of abandonment unless otherwise agreed to by the Department of Wildlife and Fisheries.

5. No activities will be allowed during the hunting season unless approved by the Department.

6. Compliance with the said WMA regulations will be required unless otherwise specified by the Department.

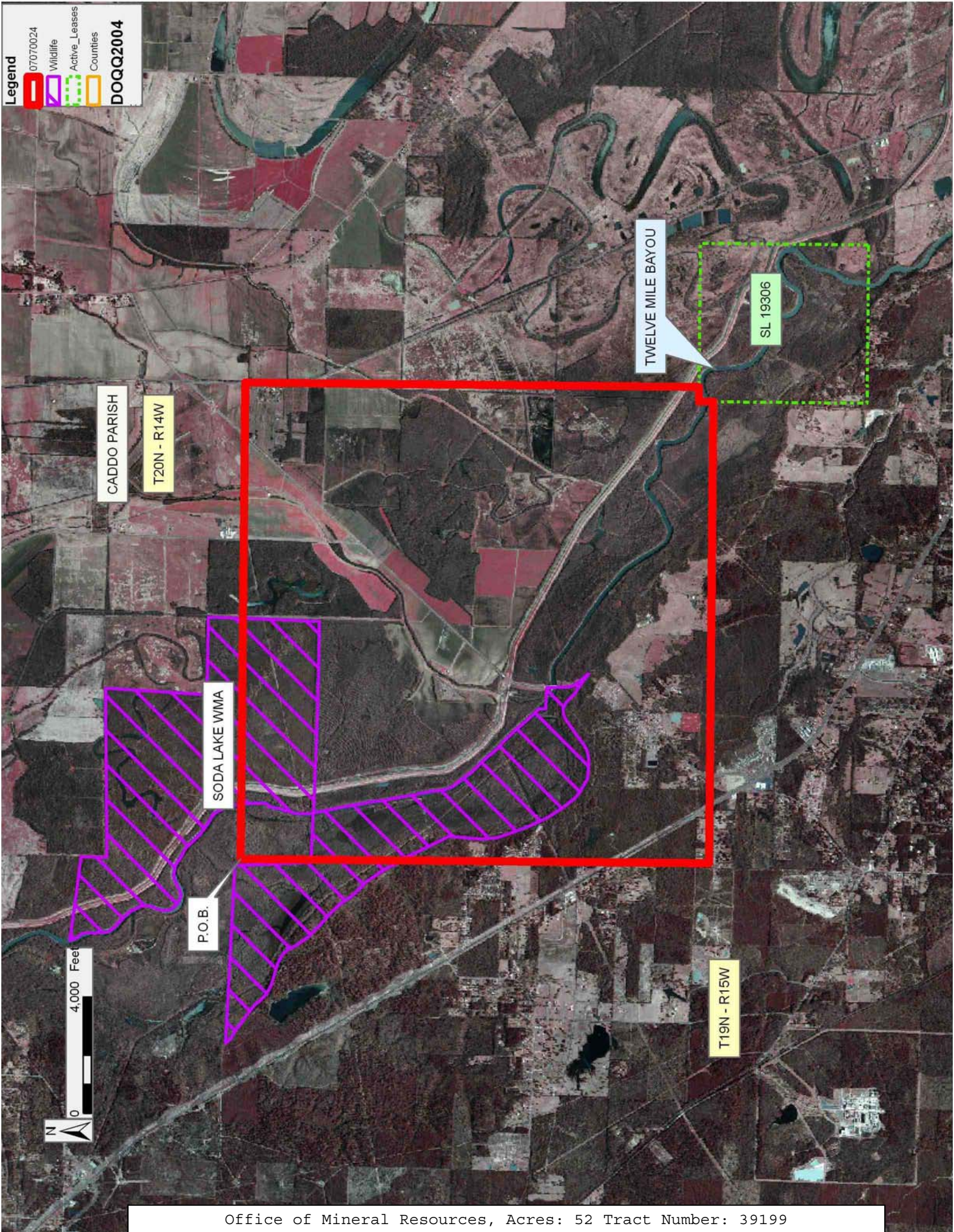
7. Prior to submitting applications for wetland permits to Federal and State permitting agencies the lease holder shall coordinate project details with the Louisiana Department of Wildlife and Fisheries, Fur and Refuge Division. Contact person for the Department will be Mike Windham at (504) 568-5886.

Applicant: RICHARD J. HAMILTON, II

Bidder	Cash Payment	Price/ Acre	Rental	Oil	Gas	Other

Legend

- 07070024
- Wildlife
- Active_Leases
- Counties
- DOQQ2004



TRACT 39200 - Bossier and Caddo Parishes, Louisiana

All of the lands now or formerly constituting the beds and bottoms of all water bodies of every nature and description the title of which vests in the State of Louisiana, together with all islands arising therein and other lands formed by accretion or by reliction, where allowed by law, excepting tax adjudicated lands, and not presently under mineral lease on July 11, 2007, situated in Bossier and Caddo Parishes, Louisiana, and more particularly described as follows: Beginning at the Easternmost Northeast corner of State Lease No. 19123, also being a point on the South boundary of State Lease No. 17732 having Coordinates of X = 1,677,916.31 and Y = 598,434.05; thence East 10,283.69 feet along the South boundary of said State Lease No. 17732 to a point having Coordinates of X = 1,688,200.00 and Y = 598,434.05; thence South 9,534.05 feet to the Northeast corner of State Lease No. 17947 having Coordinates of X = 1,688,200.00 and Y = 588,900.00; thence West 5,108.63 feet along the North boundary of said State Lease No. 17947 to the Southeast corner of State Lease No. 18394 having Coordinates of X = 1,683,091.37 and Y = 588,900.00; thence along the boundary of said State Lease No. 18394 the following courses: North 01 degrees 10 minutes 21 seconds East 5,063.45 feet to its Northeast corner having Coordinates of X = 1,683,194.98 and Y = 593,962.39 and North 89 degrees 12 minutes 22 seconds West 5,340.14 feet to the Southeast corner of said State Lease No. 19123 having Coordinates of X = 1,677,855.35 and Y = 594,036.39; thence North 00 degrees 47 minutes 39 seconds East 4,398.08 feet along the East boundary of said State Lease No. 19123 to the point of beginning, containing approximately **190 acres**, all as more particularly outlined on a plat on file in the Office of Mineral Resources, Department of Natural Resources. All bearings, distances and coordinates are based on Louisiana Coordinate System of 1927, (North or South Zone), where applicable.

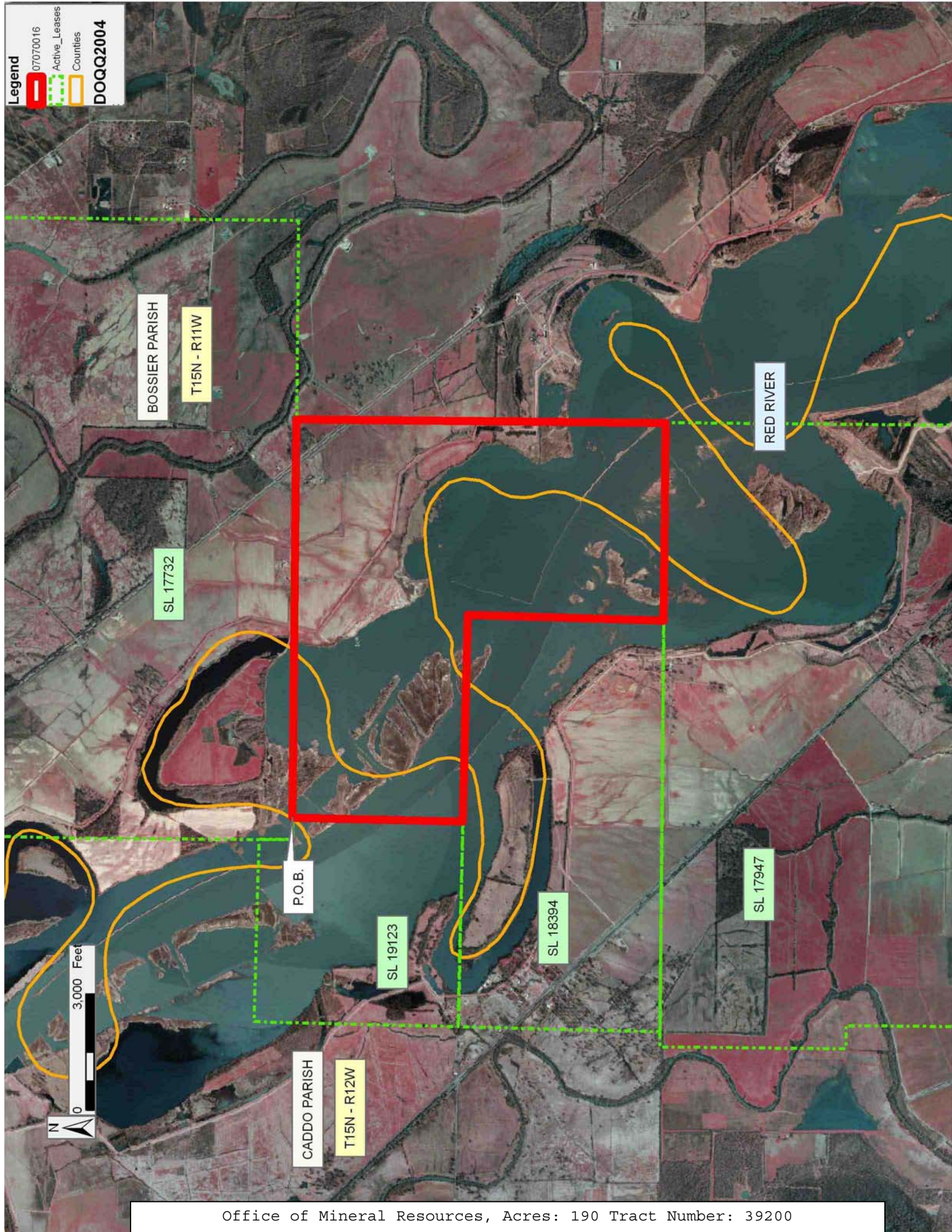
NOTE: The above description of the Tract nominated for lease has been provided and corrected, where required, exclusively by the nomination party. Any mineral lease selected from this Tract and awarded by the Louisiana State Mineral Board shall be without warranty of any kind, either express, implied, or statutory, including, but not limited to, the implied warranties of merchantability and fitness for a particular purpose. Should the mineral lease awarded by the Louisiana State Mineral Board be subsequently modified, cancelled or abrogated due to the existence of conflicting leases, operating agreements, private claims or other future obligations or conditions which may affect all or any portion of the leased Tract, it shall not relieve the Lessee of the obligation to pay any bonus due thereon to the Louisiana State Mineral Board, nor shall the Louisiana State Mineral Board be obligated to refund any consideration paid by the Lessor prior to such modification, cancellation, or abrogation, including, but not limited to, bonuses, rentals and royalties.

Applicant: WINWELL, LLC

Bidder	Cash Payment	Price/ Acre	Rental	Oil	Gas	Other

Legend

- 07070016
- Active_Leases
- Counties
- DOQQ2004



TRACT 39201 - Iberville Parish, Louisiana

All of the lands now or formerly constituting the beds and bottoms of all water bodies of every nature and description the title of which vests in the State of Louisiana, together with all islands arising therein and other lands formed by accretion or by reliction, where allowed by law, excepting tax adjudicated lands, and not presently under mineral lease on July 11, 2007, situated in Iberville Parish, Louisiana, and more particularly described as follows: Beginning at a point having Coordinates of X = 1,989,100.00 and Y = 607,400.00; thence East 14,200.00 feet to a point having Coordinates of X = 2,003,300.00 and Y = 607,400.00; thence South 5,400.00 feet to the Northwest corner of Operating Agreement No. 215 having Coordinates of X = 2,003,300.00 and Y = 602,000.00; thence South 5,500.00 feet along the West line of said Operating Agreement No. 215 to its Southwest corner having Coordinates of X = 2,003,300.00 and Y = 596,500.00; thence South 3,300.00 feet to a point having Coordinates of X = 2,003,300.00 and Y = 593,200.00; thence West 14,200.00 feet to a point having Coordinates of X = 1,989,100.00 and Y = 593,200.00; thence North 14,200.00 feet to the Point of Beginning, containing approximately **61 acres**, all as more particularly outlined on a plat on file in the Office of Mineral Resources, Department of Natural Resources. All bearings, distances and coordinates are based on Louisiana Coordinate System of 1927, (North or South Zone), where applicable.

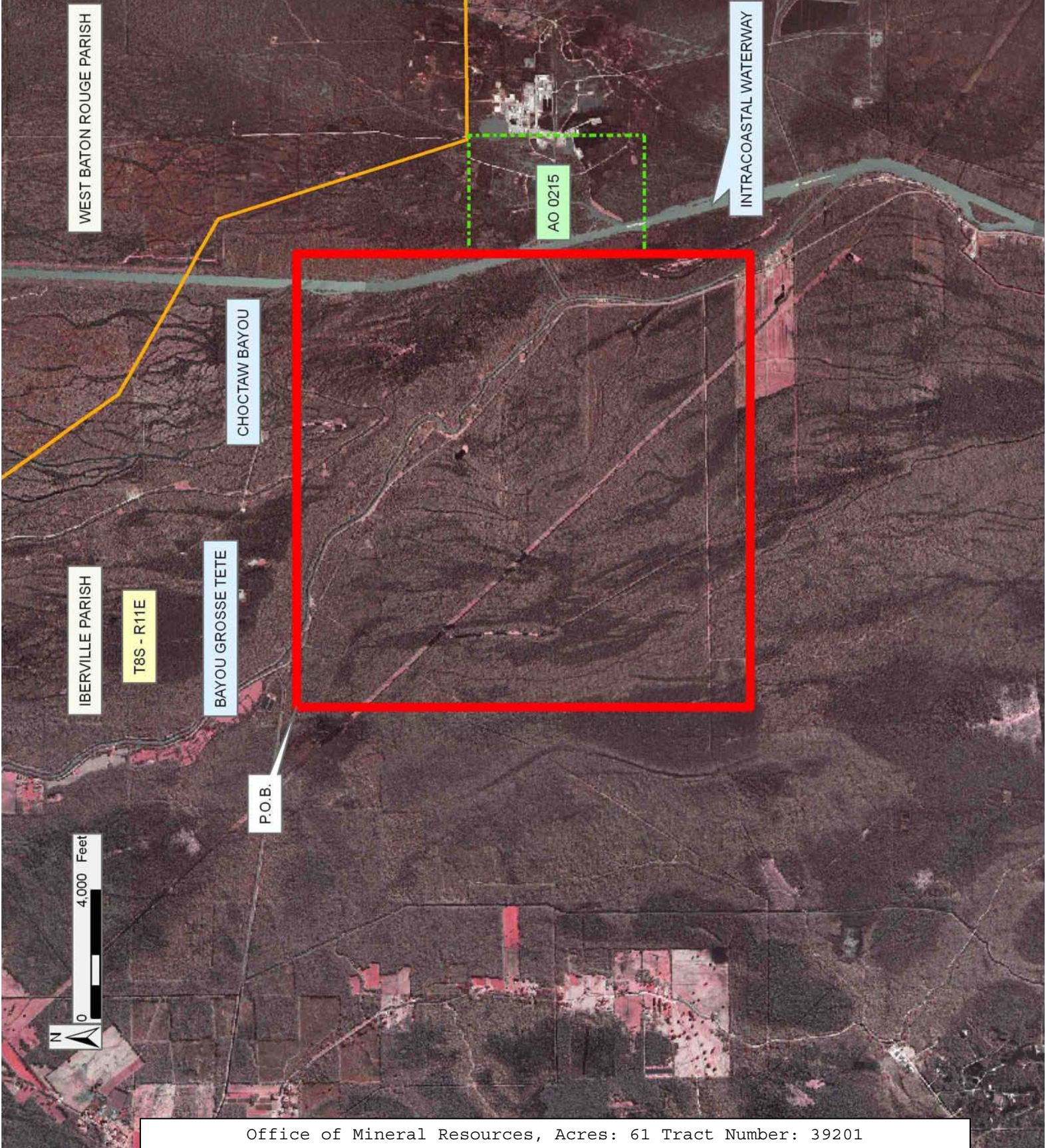
NOTE: The above description of the Tract nominated for lease has been provided and corrected, where required, exclusively by the nomination party. Any mineral lease selected from this Tract and awarded by the Louisiana State Mineral Board shall be without warranty of any kind, either express, implied, or statutory, including, but not limited to, the implied warranties of merchantability and fitness for a particular purpose. Should the mineral lease awarded by the Louisiana State Mineral Board be subsequently modified, cancelled or abrogated due to the existence of conflicting leases, operating agreements, private claims or other future obligations or conditions which may affect all or any portion of the leased Tract, it shall not relieve the Lessee of the obligation to pay any bonus due thereon to the Louisiana State Mineral Board, nor shall the Louisiana State Mineral Board be obligated to refund any consideration paid by the Lessor prior to such modification, cancellation, or abrogation, including, but not limited to, bonuses, rentals and royalties.

Applicant: A. S. RUFFIN, JR.

Bidder	Cash Payment	Price/ Acre	Rental	Oil	Gas	Other

Legend

- 07070014
- Active_Leases
- Counties
- DOQQ2004



TRACT 39202 - Iberia Parish, Louisiana

All of the lands now or formerly constituting the beds and bottoms of all water bodies of every nature and description the title of which vests in the State of Louisiana, together with all islands arising therein and other lands formed by accretion or by reliction, where allowed by law, excepting tax adjudicated lands, and not presently under mineral lease on July 11, 2007, situated in Iberia Parish, Louisiana, and more particularly described as follows: Beginning at the Southwest corner of the Northernmost portion of State Lease No. 293, as amended, having Coordinates of X = 1,899,856.40 and Y = 506,008.70; thence along the Southern boundary of the said portion of said State Lease No. 293 the following courses: East 10,080.40 feet to a point having Coordinates of X = 1,909,936.80 and Y = 506,008.70; North 04 degrees 53 minutes 22 seconds West 45.41 feet to a point having Coordinates of X = 1,909,932.93 and Y = 506,053.94 and North 57 degrees 03 minutes 52 seconds East 3,255.88 feet to a point having Coordinates of X = 1,912,665.54 and Y = 507,824.14; thence South 04 degrees 56 minutes 58 seconds East 5,486.67 feet to a point on the Northern boundary of the Southernmost portion of said State Lease No. 293 having Coordinates of X = 1,913,138.92, Y = 502,357.93; thence along the boundary of the said Southernmost portion of said State Lease No. 293 the following courses: South 85 degrees 10 minutes 19 seconds West 2,875.20 feet to a point having Coordinates of X = 1,910,273.92 and Y = 502,115.93; West 1,954.02 feet to a point having Coordinates of X = 1,908,319.90 and Y = 502,115.93; South 4,351.61 feet to a point having Coordinates of X = 1,908,319.90 and Y = 497,764.32 and East 4,649.93 feet to a point having Coordinates of X = 1,912,969.83 and Y = 497,764.32; thence South 00 degrees 00 minutes 07 seconds East 2,548.24 feet to a point having Coordinates of X = 1,912,969.92 and Y = 495,216.08; thence West 13,047.89 feet to a point having Coordinates of X = 1,899,922.03 and Y = 495,216.08; thence North 00 degrees 20 minutes 54 seconds West 10,792.82 feet to the point of beginning, containing approximately **1,282 acres**, all as more particularly outlined on a plat on file in the Office of Mineral Resources, Department of Natural Resources. All bearings, distances and coordinates are based on Louisiana Coordinate System of 1927, (North or South Zone), where applicable.

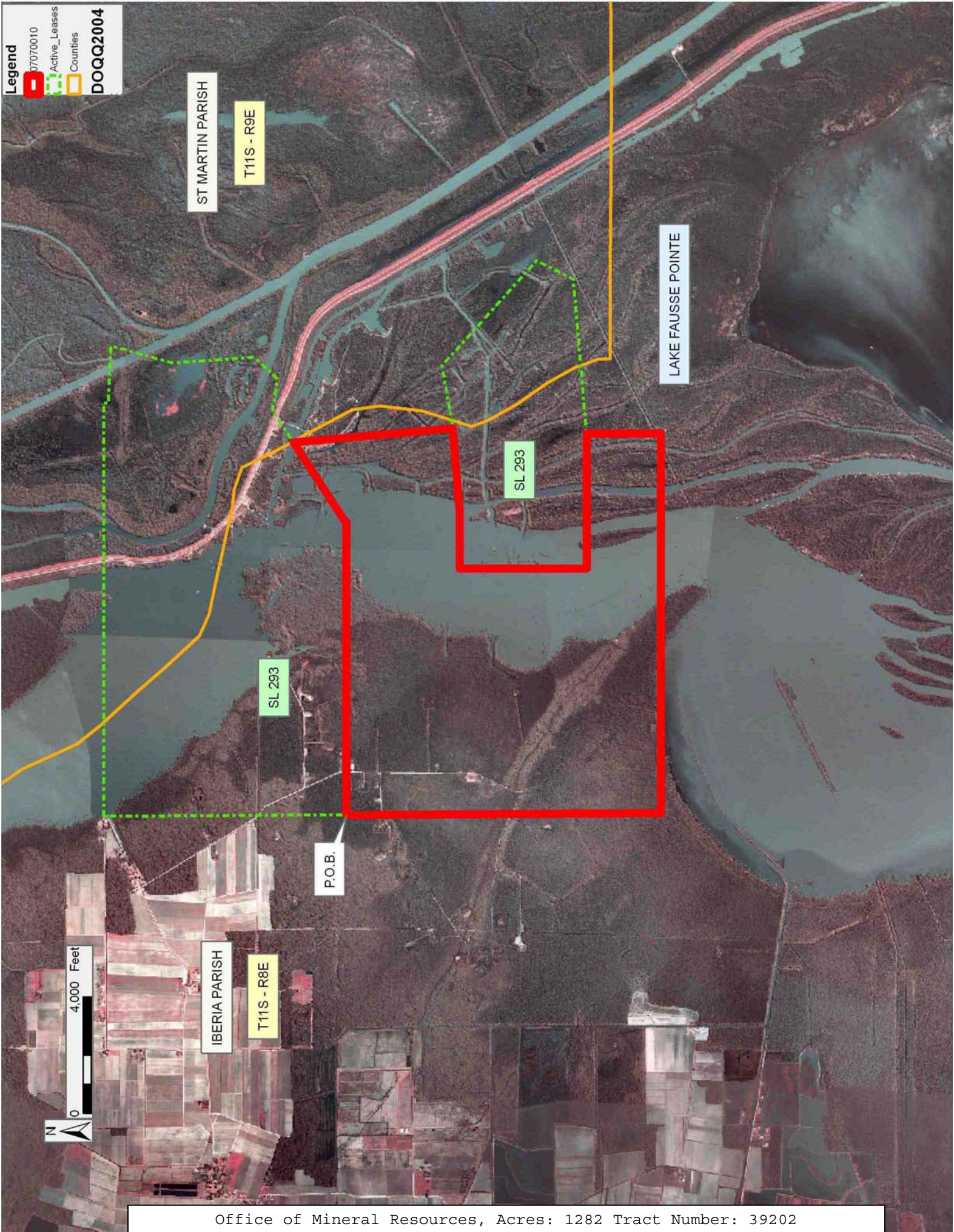
NOTE: The above description of the Tract nominated for lease has been provided and corrected, where required, exclusively by the nomination party. Any mineral lease selected from this Tract and awarded by the Louisiana State Mineral Board shall be without warranty of any kind, either express, implied, or statutory, including, but not limited to, the implied warranties of merchantability and fitness for a particular purpose. Should the mineral lease awarded by the Louisiana State Mineral Board be subsequently modified, cancelled or abrogated due to the existence of conflicting leases, operating agreements, private claims or other future obligations or conditions which may affect all or any portion of the leased Tract, it shall not relieve the Lessee of the obligation to pay any bonus due thereon to the Louisiana State Mineral Board, nor shall the Louisiana State Mineral Board be obligated to refund any consideration

paid by the Lessor prior to such modification, cancellation, or abrogation, including, but not limited to, bonuses, rentals and royalties.

NOTE: The State of Louisiana does hereby reserve, and this lease shall be subject to, the imprescriptible right of surface use in the nature of a servitude in favor of the Department of Natural Resources, including its Offices and Commissions, for the sole purpose of implementing, constructing, servicing and maintaining approved coastal zone management and/or restoration projects. Utilization of any and all rights derived under this lease by the mineral lessee, its agents, successors or assigns, shall not interfere with nor hinder the reasonable surface use by the Department of Natural Resources, its Offices or Commissions, as herein above reserved.

Applicant: OAKMONT MINERALS, INC.

Bidder	Cash Payment	Price/ Acre	Rental	Oil	Gas	Other



TRACT 39203 - Cameron Parish, Louisiana

All of the lands now or formerly constituting the beds and bottoms of all water bodies of every nature and description the title of which vests in the State of Louisiana, together with all islands arising therein and other lands formed by accretion or by reliction, where allowed by law, excepting tax adjudicated lands, and not presently under mineral lease on July 11, 2007, situated in Cameron Parish, Louisiana, and more particularly described as follows: Beginning at the Northeast corner of State Lease No. 18810, also being a point on the South boundary of State Lease No. 18722 having Coordinates of X = 1,217,349.45 and Y = 464,491.90; thence East 5,355.09 feet along the South boundary of said State Lease No. 18722 to its Southeast corner, also being a point on the Western boundary of State Lease No. 18534 having Coordinates of X = 1,222,704.54 and Y = 464,491.90; thence along the boundary of said State Lease No. 18534 the following courses: South 83.80 feet; East 1,743.93 feet; South 1,244.10 feet and East 2,308.33 feet to its Southeast corner, also being a point on the West boundary of State Lease No. 18535 having Coordinates of X = 1,226,756.80 and Y = 463,164.00; thence South 1,074.43 feet along the West boundary of said State Lease No. 18535 to its Southwest corner having Coordinates of X = 1,226,756.80 and Y = 462,089.57; thence South 9,511.57 feet to a point having Coordinates of X = 1,226,756.80 and Y = 452,578.00; thence West 9,407.35 feet to a point having Coordinates of X = 1,217,349.45 and Y = 452,578.00; thence North 9,511.57 feet to the Southeast corner of said State Lease No. 18810 having Coordinates of X = 1,217,349.45 and Y = 462,089.57; thence North 2,402.33 feet along the East boundary of said State Lease No. 18810 to the point of beginning, containing approximately **2,499.24 acres**, all as more particularly outlined on a plat on file in the Office of Mineral Resources, Department of Natural Resources. All bearings, distances and coordinates are based on Louisiana Coordinate System of 1927, (North or South Zone), where applicable.

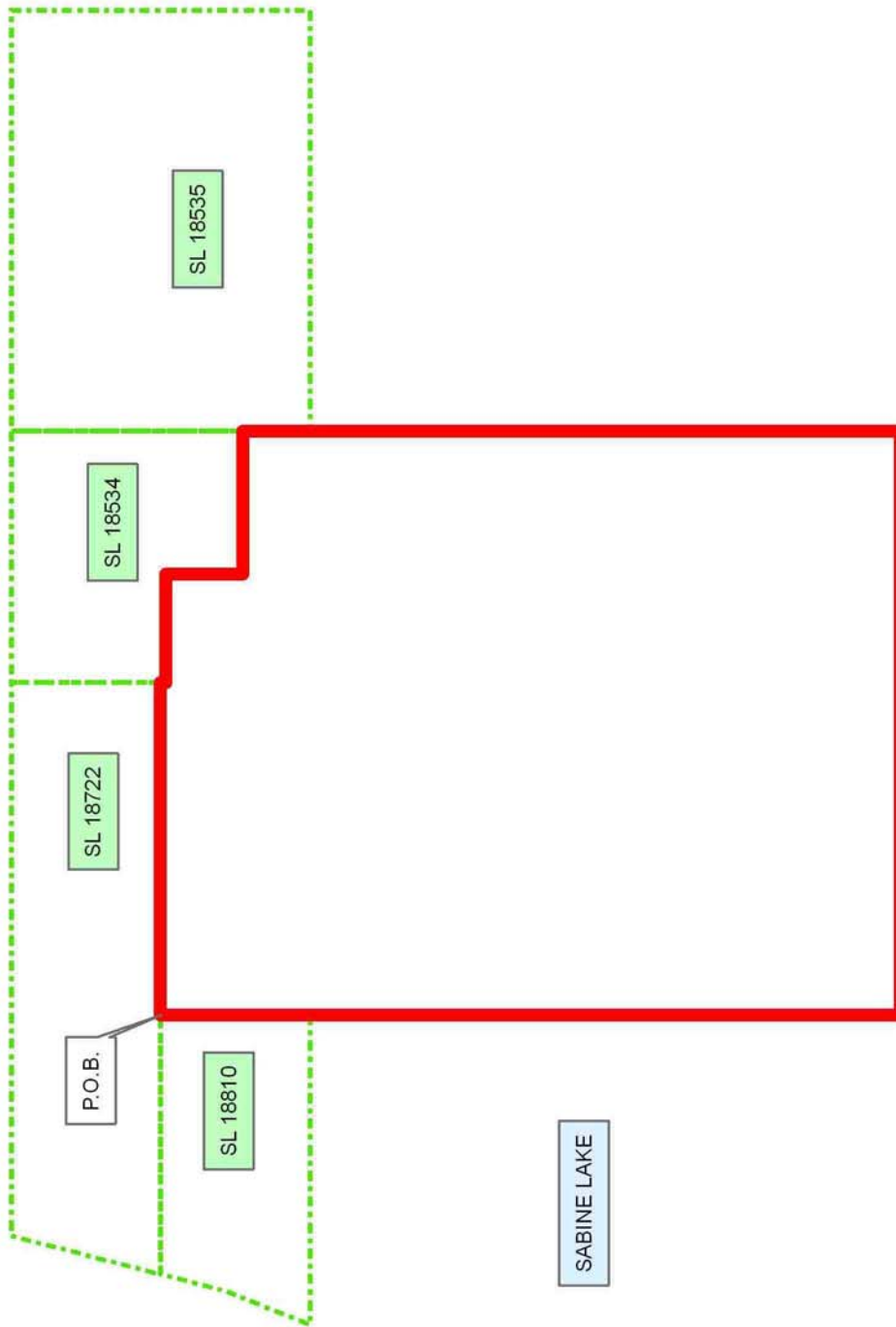
NOTE: The above description of the Tract nominated for lease has been provided and corrected, where required, exclusively by the nomination party. Any mineral lease selected from this Tract and awarded by the Louisiana State Mineral Board shall be without warranty of any kind, either express, implied, or statutory, including, but not limited to, the implied warranties of merchantability and fitness for a particular purpose. Should the mineral lease awarded by the Louisiana State Mineral Board be subsequently modified, cancelled or abrogated due to the existence of conflicting leases, operating agreements, private claims or other future obligations or conditions which may affect all or any portion of the leased Tract, it shall not relieve the Lessee of the obligation to pay any bonus due thereon to the Louisiana State Mineral Board, nor shall the Louisiana State Mineral Board be obligated to refund any consideration paid by the Lessor prior to such modification, cancellation, or abrogation, including, but not limited to, bonuses, rentals and royalties.

NOTE: The State of Louisiana does hereby reserve, and this lease shall be subject to, the imprescriptible right of surface use in the nature of a servitude in favor of the Department of Natural Resources, including its Offices and Commissions, for the sole purpose of implementing, constructing, servicing and maintaining approved coastal zone management and/or restoration projects. Utilization of any and all rights derived under this lease by the mineral lessee, its agents, successors or assigns, shall not interfere with nor hinder the reasonable surface use by the Department of Natural Resources, its Offices or Commissions, as herein above reserved.

Applicant: SAXON ENERGY, INC.

Bidder	Cash Payment	Price/ Acre	Rental	Oil	Gas	Other

CAMERON PARISH



TRACT 39204 - Cameron Parish, Louisiana

All of the lands now or formerly constituting the beds and bottoms of all water bodies of every nature and description the title of which vests in the State of Louisiana, together with all islands arising therein and other lands formed by accretion or by reliction, where allowed by law, excepting tax adjudicated lands, and not presently under mineral lease on July 11, 2007, situated in Cameron Parish, Louisiana, and more particularly described as follows: Beginning at the Northeast corner of State Lease No. 18959, also being a point on the South boundary of State Lease No. 18810 having Coordinates of X = 1,215,996.95 and Y = 462,089.57; thence East 1,352.50 feet along the South boundary of said State Lease No. 18810 to its Southeast corner having Coordinates of X = 1,217,349.45 and Y = 462,089.57; South 7,887.57 feet to a point having Coordinates of X = 1,217,349.45 and Y = 454,202.00; thence West 9,903.00 feet to a point on the Texas-Louisiana boundary having Coordinates of X = 1,207,446.45 and Y = 454,202.00; thence along said Texas-Louisiana boundary the following courses: North 24 degrees 40 minutes 22 seconds East 188.18 feet to a point having Coordinates of X = 1,207,525.00 and Y = 454,373.00; North 36 degrees 44 minutes 14 seconds East 3,970.61 feet to a point having Coordinates of X = 1,209,900.00 and Y = 457,555.00 and North 31 degrees 07 minutes 12 seconds East 2,805.79 feet to the Southwest corner of said State Lease No. 18959 having Coordinates of X = 1,211,350.12 and Y = 459,957.00; thence along the boundary of said State Lease No. 18959 the following courses: East 4,646.83 feet to its Southeast corner having Coordinates of X = 1,215,996.95 and Y = 459,957.00 and North 2,132.57 feet to the point of beginning, containing approximately **1,106.65 acres, LESS AND EXCEPT** that portion thereof, if any, located West of the boundary line between the States of Texas and Louisiana as determined by the report of the Special Master and adjudicated by the Supreme Court of the United States in litigation styled **Texas v. Louisiana, et al No. 36 Original**, or as otherwise approved by said court, all as more particularly outlined on a plat on file in the Office of Mineral Resources, Department of Natural Resources. All bearings, distances and coordinates are based on Louisiana Coordinate System of 1927, (North or South Zone), where applicable.

NOTE: The above description of the Tract nominated for lease has been provided and corrected, where required, exclusively by the nomination party. Any mineral lease selected from this Tract and awarded by the Louisiana State Mineral Board shall be without warranty of any kind, either express, implied, or statutory, including, but not limited to, the implied warranties of merchantability and fitness for a particular purpose. Should the mineral lease awarded by the Louisiana State Mineral Board be subsequently modified, cancelled or abrogated due to the existence of conflicting leases, operating agreements, private claims or other future obligations or conditions which may affect all or any portion of the leased Tract, it shall not relieve the Lessee of the obligation to pay any bonus due thereon to the Louisiana State Mineral Board, nor shall the Louisiana State Mineral Board be obligated to refund any consideration

paid by the Lessor prior to such modification, cancellation, or abrogation, including, but not limited to, bonuses, rentals and royalties.

NOTE: The State of Louisiana does hereby reserve, and this lease shall be subject to, the imprescriptible right of surface use in the nature of a servitude in favor of the Department of Natural Resources, including its Offices and Commissions, for the sole purpose of implementing, constructing, servicing and maintaining approved coastal zone management and/or restoration projects. Utilization of any and all rights derived under this lease by the mineral lessee, its agents, successors or assigns, shall not interfere with nor hinder the reasonable surface use by the Department of Natural Resources, its Offices or Commissions, as herein above reserved.

Applicant: SAXON ENERGY, INC.

Bidder	Cash Payment	Price/ Acre	Rental	Oil	Gas	Other

Legend

 07070011

 Active_Leases

DOQQ2004

CAMERON PARISH

SABINE LAKE

SL 18810

P.O.B.

SL 18959

SL 18158



TRACT 39205 - Cameron Parish, Louisiana

All of the lands now or formerly constituting the beds and bottoms of all water bodies of every nature and description the title of which vests in the State of Louisiana, together with all islands arising therein and other lands formed by accretion or by reliction, where allowed by law, excepting tax adjudicated lands, and not presently under mineral lease on July 11, 2007, situated in Cameron Parish, Louisiana, and more particularly described as follows: Beginning at the Texas-Louisiana boundary at a point having Coordinates of X = 1,201,511.90 and Y = 447,645.00; thence East 7,555.10 feet to the Northwest corner of State Lease No. 19068 to a point having Coordinates of X = 1,209,067.00 and Y = 447,645.00; thence South 2,465.00 feet along the Western boundary of State Lease No. 19068 to a point having Coordinates of X = 1,209,067.00 and Y = 445,180.00; thence West 2,187.00 feet to the Eastern boundary of State Lease No. 19067 to a point having Coordinates of X = 1,206,880.00 and Y = 445,180.00; thence North 1,745 feet to the Northeast corner of State Lease No. 19067 at a point having Coordinates of X = 1,206,880.00 and Y = 446,925.00; thence West 3,292 feet along the Northern boundary of State Lease No. 16097 to the Northwest corner of State Lease No. 16097 to a point having Coordinates of X = 1,203,588.00 and Y = 446,925.00; thence South 2,764 feet to a point having Coordinates of X = 1,203,588.00 and Y = 444,161.00; thence South 76 degrees 05 minutes 08 seconds West 6,499.73 feet to a point having Coordinates of X = 1,197,279.00 and Y = 442,598.00; thence South 1,628 feet along Western boundary of State Lease No. 19067 to a point having Coordinates of X = 1,197,279.00 and Y = 440,970.00; thence West 5,243.40 to a point on the Texas-Louisiana boundary having Coordinates of X = 1,192,035.60 and Y = 440,970.00; thence Northeasterly along the Texas-Louisiana boundary the following courses: North 58 degrees 23 minutes 11 seconds East 2,976.04 feet to a point having Coordinates X = 1,194,570.00 and Y = 442,530.00; North 46 degrees 43 minutes 34 seconds East 2,582.11 feet to a point having Coordinates X = 1,196,450.00 and Y = 444,300.00 and North 56 degrees 32 minutes 33 seconds 6,067.28 feet to the point of beginning, containing approximately **879.55 acres, LESS AND EXCEPT** that portion thereof, if any, located West of the boundary line between the States of Texas and Louisiana as determined by the report of the Special Master and adjudicated by the Supreme Court of the United States in litigation styled **Texas v. Louisiana, et al No. 36 Original**, or as otherwise approved by said court, all as more particularly outlined on a plat on file in the Office of Mineral Resources, Department of Natural Resources. All bearings, distances and coordinates are based on Louisiana Coordinate System of 1927, (North or South Zone), where applicable.

NOTE: The above description of the Tract nominated for lease has been provided and corrected, where required, exclusively by the nomination party. Any mineral lease selected from this Tract and awarded by the Louisiana State Mineral Board shall be without warranty of any kind, either express, implied, or statutory, including, but not limited to, the implied warranties of merchantability and fitness for a particular purpose. Should the mineral lease awarded by the Louisiana State Mineral

Board be subsequently modified, cancelled or abrogated due to the existence of conflicting leases, operating agreements, private claims or other future obligations or conditions which may affect all or any portion of the leased Tract, it shall not relieve the Lessee of the obligation to pay any bonus due thereon to the Louisiana State Mineral Board, nor shall the Louisiana State Mineral Board be obligated to refund any consideration paid by the Lessor prior to such modification, cancellation, or abrogation, including, but not limited to, bonuses, rentals and royalties.

NOTE: The State of Louisiana does hereby reserve, and this lease shall be subject to, the imprescriptible right of surface use in the nature of a servitude in favor of the Department of Natural Resources, including its Offices and Commissions, for the sole purpose of implementing, constructing, servicing and maintaining approved coastal zone management and/or restoration projects. Utilization of any and all rights derived under this lease by the mineral lessee, its agents, successors or assigns, shall not interfere with nor hinder the reasonable surface use by the Department of Natural Resources, its Offices or Commissions, as herein above reserved.

Applicant: STEPHEN M. JENKINS, INC.

Bidder	Cash Payment	Price/ Acre	Rental	Oil	Gas	Other



CAMERON PARISH

SABINE LAKE

P.O.B.

SL 19068

SL 19067

SL 19095



TRACT 39206 - Cameron Parish, Louisiana

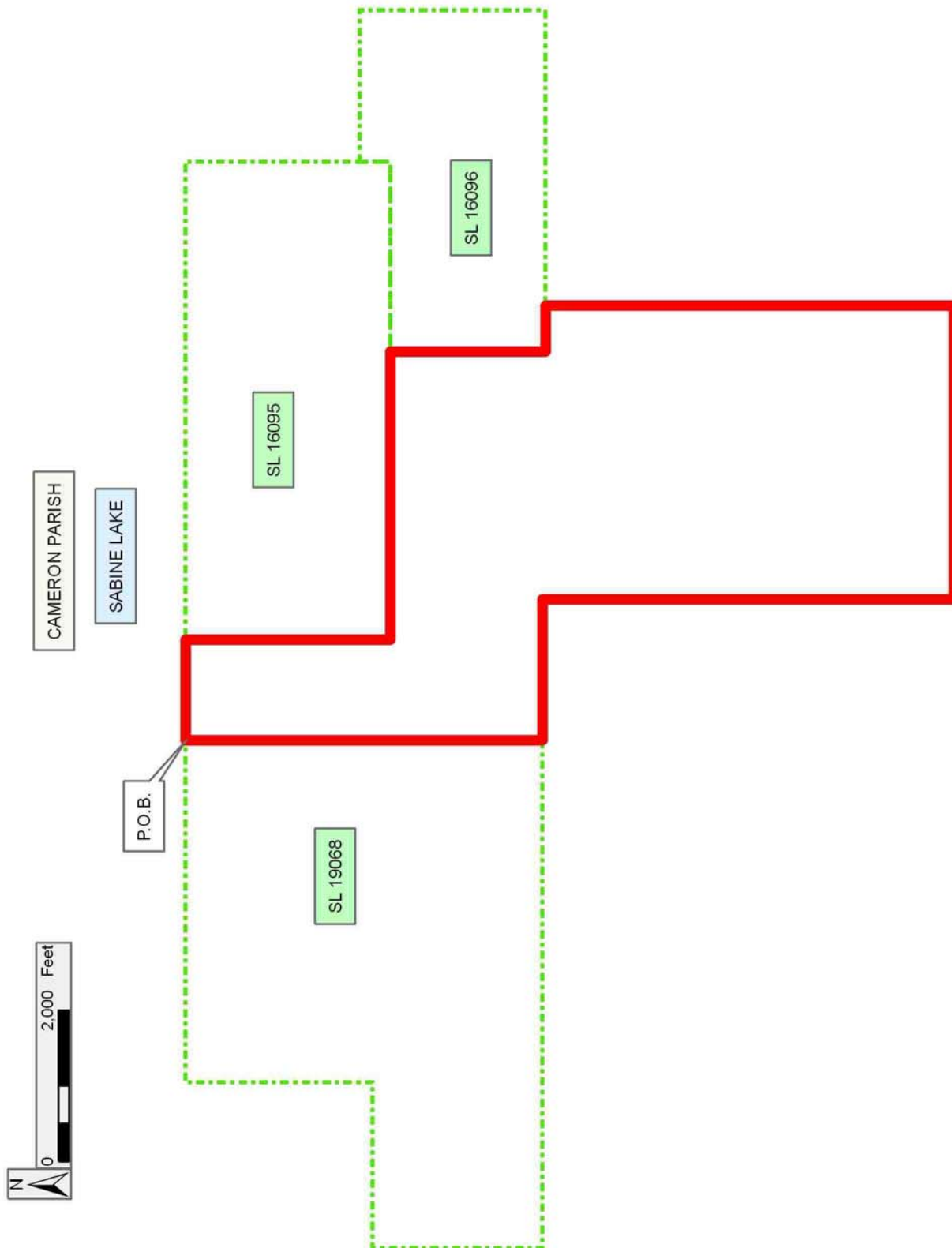
All of the lands now or formerly constituting the beds and bottoms of all water bodies of every nature and description the title of which vests in the State of Louisiana, together with all islands arising therein and other lands formed by accretion or by reliction, where allowed by law, excepting tax adjudicated lands, and not presently under mineral lease on July 11, 2007, situated in Cameron Parish, Louisiana, and more particularly described as follows: Beginning at the Northeast corner of State Lease No. 19068 at a point having Coordinates of X = 1,213,575.00 and Y = 447,645.00; thence East 1,325 feet to the Northwest corner of State Lease No. 16095 to a point having Coordinates of X = 1,214,900.00 and Y = 447,645.00; thence South 2,700 feet to the Southwest corner of State Lease No. 16095 to a point having Coordinates of X = 1,214,900.00 and Y = 444,945.00; thence East 3,800 feet along the Southern boundary of State Lease No. 16095 to the Western edge of State Lease No. 16096 at a point having Coordinates of X = 1,218,700.00 and Y = 444,945.00; thence South 2,043.82 along the Western boundary of State Lease No. 16096 to the Southwest corner of State Lease No. 16096 at a point having Coordinates of X = 1,218,700.00 and Y = 442,901.18; thence East 608.83 feet along the Southern boundary of State Lease No. 16096 to a point having Coordinates of X = 1,219,308.83 and Y = 442,901.18; thence South 5,385.92 feet to a point having Coordinates of X = 1,219,308.83 and Y = 437,515.26; thence West 3,876.30 feet to a point having Coordinates of X = 1,215,432.53 and Y = 437,515.26; thence North 5,424.74 feet to a point having Coordinates of X = 1,215,432.53 and Y = 442,940.00; thence West 1,857.53 feet to a point having Coordinates of X = 1,213,575.00 and Y = 442,940.00; thence North 4,705 feet to the point of beginning, containing approximately **800.22 acres**, all as more particularly outlined on a plat on file in the Office of Mineral Resources, Department of Natural Resources. All bearings, distances and coordinates are based on Louisiana Coordinate System of 1927, (North or South Zone), where applicable.

NOTE: The above description of the Tract nominated for lease has been provided and corrected, where required, exclusively by the nomination party. Any mineral lease selected from this Tract and awarded by the Louisiana State Mineral Board shall be without warranty of any kind, either express, implied, or statutory, including, but not limited to, the implied warranties of merchantability and fitness for a particular purpose. Should the mineral lease awarded by the Louisiana State Mineral Board be subsequently modified, cancelled or abrogated due to the existence of conflicting leases, operating agreements, private claims or other future obligations or conditions which may affect all or any portion of the leased Tract, it shall not relieve the Lessee of the obligation to pay any bonus due thereon to the Louisiana State Mineral Board, nor shall the Louisiana State Mineral Board be obligated to refund any consideration paid by the Lessor prior to such modification, cancellation, or abrogation, including, but not limited to, bonuses, rentals and royalties.

NOTE: The State of Louisiana does hereby reserve, and this lease shall be subject to, the imprescriptible right of surface use in the nature of a servitude in favor of the Department of Natural Resources, including its Offices and Commissions, for the sole purpose of implementing, constructing, servicing and maintaining approved coastal zone management and/or restoration projects. Utilization of any and all rights derived under this lease by the mineral lessee, its agents, successors or assigns, shall not interfere with nor hinder the reasonable surface use by the Department of Natural Resources, its Offices or Commissions, as herein above reserved.

Applicant: STEPHEN M. JENKINS, INC.

Bidder	Cash Payment	Price/ Acre	Rental	Oil	Gas	Other



TRACT 39207 - Cameron Parish, Louisiana

All of the lands now or formerly constituting the beds and bottoms of all water bodies of every nature and description the title of which vests in the State of Louisiana, together with all islands arising therein and other lands formed by accretion or by reliction, where allowed by law, excepting tax adjudicated lands, and not presently under mineral lease on July 11, 2007, situated in Cameron Parish, Louisiana, and more particularly described as follows: Beginning at the Northeast corner of State Lease No. 16095 at a point having Coordinates of X = 1,221,200.00 and Y = 447,645.00; thence East 4,644.65 feet to a point having Coordinates of X = 1,225,844.65 and Y = 447,645.00; thence South 07 degrees 17 minutes 17 seconds West 1215.25 feet to a point having Coordinates of X = 1,225,690.48 and Y = 446,439.57; thence South 21 degrees 05 minutes 25 seconds West 4170.05 feet to a point having Coordinates of X = 1,224,189.93 and Y = 442,548.86; thence South 56 degrees 36 minutes 48 seconds East 237.01 feet to a point having Coordinates of X = 1,224,387.83 and Y = 442,418.43; thence South 32 degrees 08 minutes 09 seconds West 3137.09 feet to a point having Coordinates of X = 1,222,719.12 and Y = 439,761.98; thence South 17 degrees 03 minutes 43 seconds West 503.70 feet to a point having Coordinates of X = 1,222,571.33 and Y = 439,280.45; thence South 02 degrees 36 minutes 12 seconds West 241.01 feet to a point having Coordinates of X = 1,222,560.38 and Y = 439,039.69; thence South 13 degrees 14 minutes 39 seconds East 95.56 feet to a point having Coordinates of X = 1,222,582.28 and Y = 438,946.66; thence South 17 degrees 58 minutes 28 seconds West 212.85 feet to a point having Coordinates of X = 1,222,516.60 and Y = 438,744.20; thence South 20 degrees 09 minutes 49 seconds East 460.50 feet to a point having Coordinates of X = 1,222,675.33 and Y = 438,311.93; thence South 31 degrees 52 minutes 04 seconds West 938.06 feet to a point having Coordinates of X = 1,222,180.07 and Y = 437,515.26; thence West 2,871.24 feet to a point having Coordinates of X = 1,219,308.83 and Y = 437,515.26; thence North 5,385.92 to the Southern boundary of State Lease No. 16096 at a point having Coordinates of X = 1,219,308.83 and Y = 442,901.18; thence East 3,891.17 feet along the Southern boundary of State Lease No. 16096 to the Southeast corner of State Lease No. 16096 to a point having Coordinates of X = 1,223,200.00 and Y = 442,901.18; thence North 2,443.82 feet to the Northeast corner of State Lease No. 16096 to a point having Coordinates of X = 1,223,200.00 and Y = 445,345.00; thence West 2,000 feet along the Northern boundary of State Lease No. 16096 to the Eastern boundary of State Lease No. 16095 to a point having Coordinates of X = 1,221,200.00 and Y = 445,345.00; thence North 2,300 feet along Eastern boundary of State Lease No. 16095 to the point of beginning, containing approximately **763 acres**, all as more particularly outlined on a plat on file in the Office of Mineral Resources, Department of Natural Resources. All bearings, distances and coordinates are based on Louisiana Coordinate System of 1927, (North or South Zone), where applicable.

NOTE: The above description of the Tract nominated for lease has been provided and corrected, where required, exclusively by the nomination party. Any mineral lease selected from this Tract and awarded by the Louisiana State Mineral Board shall be without warranty of any kind, either express, implied, or statutory, including, but not limited to, the implied warranties of merchantability and fitness for a particular purpose. Should the mineral lease awarded by the Louisiana State Mineral Board be subsequently modified, cancelled or abrogated due to the existence of conflicting leases, operating agreements, private claims or other future obligations or conditions which may affect all or any portion of the leased Tract, it shall not relieve the Lessee of the obligation to pay any bonus due thereon to the Louisiana State Mineral Board, nor shall the Louisiana State Mineral Board be obligated to refund any consideration paid by the Lessor prior to such modification, cancellation, or abrogation, including, but not limited to, bonuses, rentals and royalties.

NOTE: The State of Louisiana does hereby reserve, and this lease shall be subject to, the imprescriptible right of surface use in the nature of a servitude in favor of the Department of Natural Resources, including its Offices and Commissions, for the sole purpose of implementing, constructing, servicing and maintaining approved coastal zone management and/or restoration projects. Utilization of any and all rights derived under this lease by the mineral lessee, its agents, successors or assigns, shall not interfere with nor hinder the reasonable surface use by the Department of Natural Resources, its Offices or Commissions, as herein above reserved.

Applicant: STEPHEN M. JENKINS, INC.

Bidder	Cash Payment	Price/ Acre	Rental	Oil	Gas	Other

