

TRACT 39182 - Portion of Block 10, Grand Isle Area, Jefferson and Plaquemines Parishes, Louisiana

The beds and bottoms of all water bodies belonging to the State of Louisiana located in Block 10, Grand Isle Area, together with any present lands formed by accretion to the shoreline or islands formed therein, located in Jefferson and Plaquemines Parishes, Louisiana, owned by and not presently under mineral lease as of July 11, 2007, from the State of Louisiana, the geographical area of which is more fully described as follows: Beginning at the Southeast corner of Block 10, Grand Isle Area, having Coordinates of X = 2,457,659.89 and Y = 185,535.39; thence West 14,758.04 feet along the South line of said Block 10 to its Southwest corner having Coordinates of X = 2,442,901.85 and Y = 185,535.39; thence North 7,379.02 feet along the West line of said Block 10 to a point having Coordinates of X = 2,442,901.85 and Y = 192,914.41; thence East 2,608.15 feet to the Southwest corner of State Lease No. 18736 having Coordinates of X = 2,445,510.00 and Y = 192,914.41; thence East 12,149.89 feet along the South boundary of said State Lease No. 18736 to its Southeast corner, also being a point on the East line of said Block 10 having Coordinates of X = 2,457,659.89 and Y = 192,914.41; thence South 7,379.02 feet along the East line of said Block 10 to the point of beginning, containing approximately **2,500.00 acres**, all as more particularly outlined on a plat on file in the Office of Mineral Resources, Department of Natural Resources. All bearings, distances and coordinates are based on Louisiana Coordinate System of 1927, (North or South Zone).

NOTE: The above description of the Tract nominated for lease has been provided and corrected, where required, exclusively by the nomination party. Any mineral lease selected from this Tract and awarded by the Louisiana State Mineral Board shall be without warranty of any kind, either express, implied, or statutory, including, but not limited to, the implied warranties of merchantability and fitness for a particular purpose. Should the mineral lease awarded by the Louisiana State Mineral Board be subsequently modified, cancelled or abrogated due to the existence of conflicting leases, operating agreements, private claims or other future obligations or conditions which may affect all or any portion of the leased Tract, it shall not relieve the Lessee of the obligation to pay any bonus due thereon to the Louisiana State Mineral Board, nor shall the Louisiana State Mineral Board be obligated to refund any consideration paid by the Lessor prior to such modification, cancellation, or abrogation, including, but not limited to, bonuses, rentals and royalties.

NOTE: The State of Louisiana does hereby reserve, and this lease shall be subject to, the imprescriptible right of surface use in the nature of a servitude in favor of the Department of Natural Resources, including its Offices and Commissions, for the sole purpose of implementing, constructing, servicing and maintaining approved coastal zone management and/or restoration projects. Utilization of any and all rights derived under this lease by the mineral lessee, its agents, successors or assigns, shall not interfere with nor hinder the reasonable surface use by the

Department of Natural Resources, its Offices or Commissions, as herein above reserved.

Applicant: ALLEN & KIRMSE, LTD.

Bidder	Cash Payment	Price/ Acre	Rental	Oil	Gas	Other

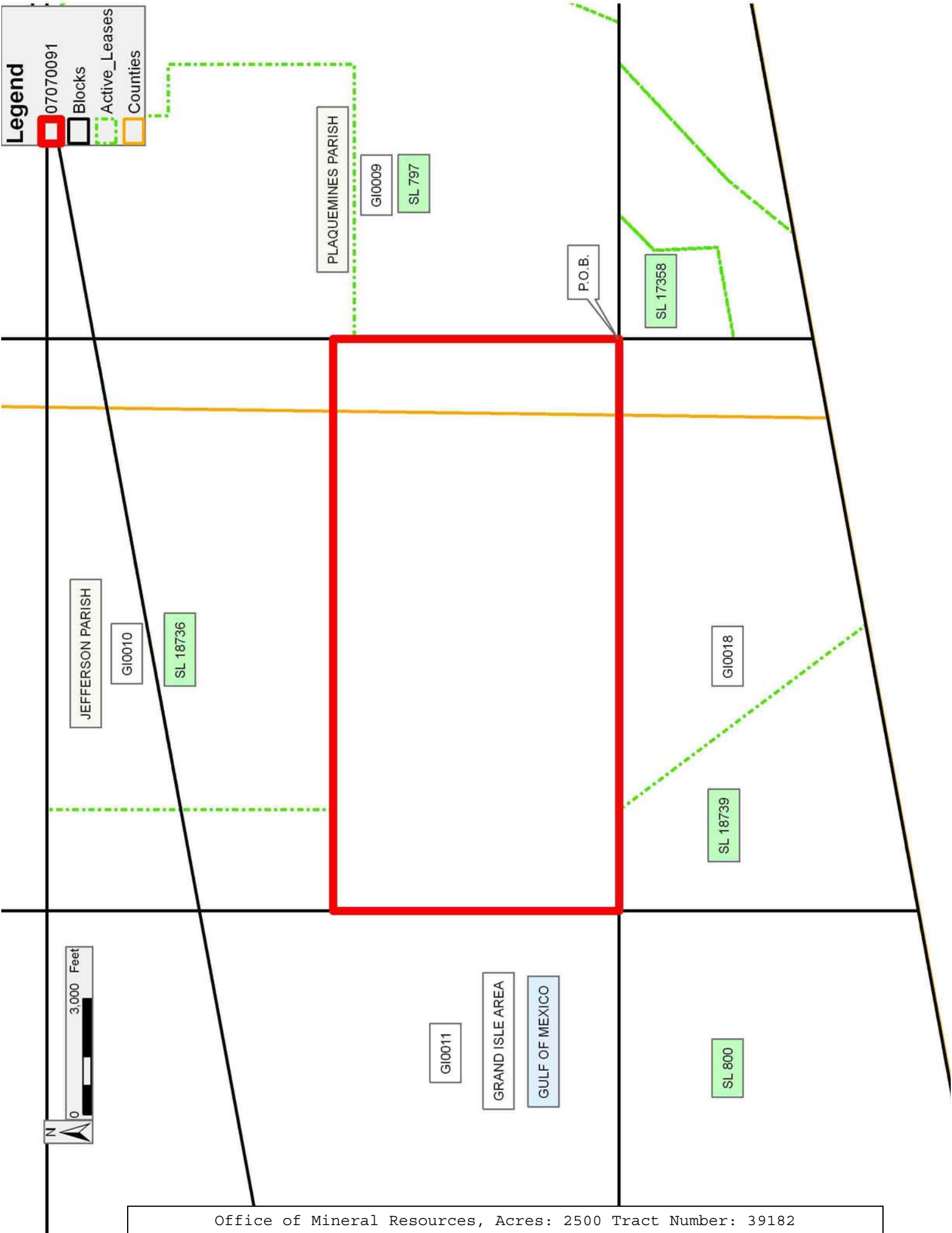
Legend

07070091

Blocks

Active_Leases

Counties



TRACT 39183 - Portion of Block 18, Grand Isle Area, Jefferson and Plaquemines Parishes, Louisiana

The beds and bottoms of all water bodies belonging to the State of Louisiana located in Block 18, Grand Isle Area, together with any present lands formed by accretion to the shoreline or islands formed therein, located in Jefferson and Plaquemines Parishes, Louisiana, owned by and not presently under mineral lease as of July 11, 2007, from the State of Louisiana, the geographical area of which is more fully described as follows: Beginning at the Northeast corner of Block 18, Grand Isle Area, having Coordinates of X = 2,457,659.89 and Y = 185,535.39; thence South 5,001.23 feet along the East line of said Block 18 to a point on the Three Mile Line, as decreed by the Supreme Court of the United States, as determined by a Special Master appointed therein, in litigation styled *United States v. State of Louisiana et al No. 9 Original*, in 1975, having Coordinates of X = 2,457,659.89 and Y = 180,534.16; thence Southwesterly on a straight line, along the said Three Mile Line, to the Southeast corner of State Lease No. 18739 having Coordinates of X = 2,450,280.87 and Y = 179,175.44; thence North 36 degrees 55 minutes 20 seconds West 7,955.38 feet along the East boundary of said State Lease No. 18739 to its Northeast corner, also being a point on the North line of said Block 18 having Coordinates of X = 2,445,501.85 and Y = 185,535.39; thence East 12,158.04 feet along the North line of said Block 18 to the point of beginning, containing approximately **1,311.17 acres, LESS AND EXCEPT** that portion thereof, if any, lying seaward of the line three nautical miles from the coast line of Louisiana, as said three mile line has been decreed by the Supreme Court of the United States, as determined by a Special Master appointed therein, in litigation styled **United States v. State of Louisiana et al No. 9 Original**, in 1975, all as more particularly outlined on a plat in the Office of Mineral Resources, Department of Natural Resources. All bearings, distances and coordinates are based on the Louisiana Coordinate System of 1927, (South Zone).

NOTE: The above description of the Tract nominated for lease has been provided and corrected, where required, exclusively by the nomination party. Any mineral lease selected from this Tract and awarded by the Louisiana State Mineral Board shall be without warranty of any kind, either express, implied, or statutory, including, but not limited to, the implied warranties of merchantability and fitness for a particular purpose. Should the mineral lease awarded by the Louisiana State Mineral Board be subsequently modified, cancelled or abrogated due to the existence of conflicting leases, operating agreements, private claims or other future obligations or conditions which may affect all or any portion of the leased Tract, it shall not relieve the Lessee of the obligation to pay any bonus due thereon to the Louisiana State Mineral Board, nor shall the Louisiana State Mineral Board be obligated to refund any consideration paid by the Lessor prior to such modification, cancellation, or abrogation, including, but not limited to, bonuses, rentals and royalties.

NOTE: The State of Louisiana does hereby reserve, and this lease shall be subject to, the imprescriptible right of surface use in the nature of a servitude in favor of the Department of Natural Resources, including its Offices and Commissions, for the sole purpose of implementing, constructing, servicing and maintaining approved coastal zone management and/or restoration projects. Utilization of any and all rights derived under this lease by the mineral lessee, its agents, successors or assigns, shall not interfere with nor hinder the reasonable surface use by the Department of Natural Resources, its Offices or Commissions, as herein above reserved.

Applicant: ALLEN & KIRMSE, LTD.

Bidder	Cash Payment	Price/ Acre	Rental	Oil	Gas	Other

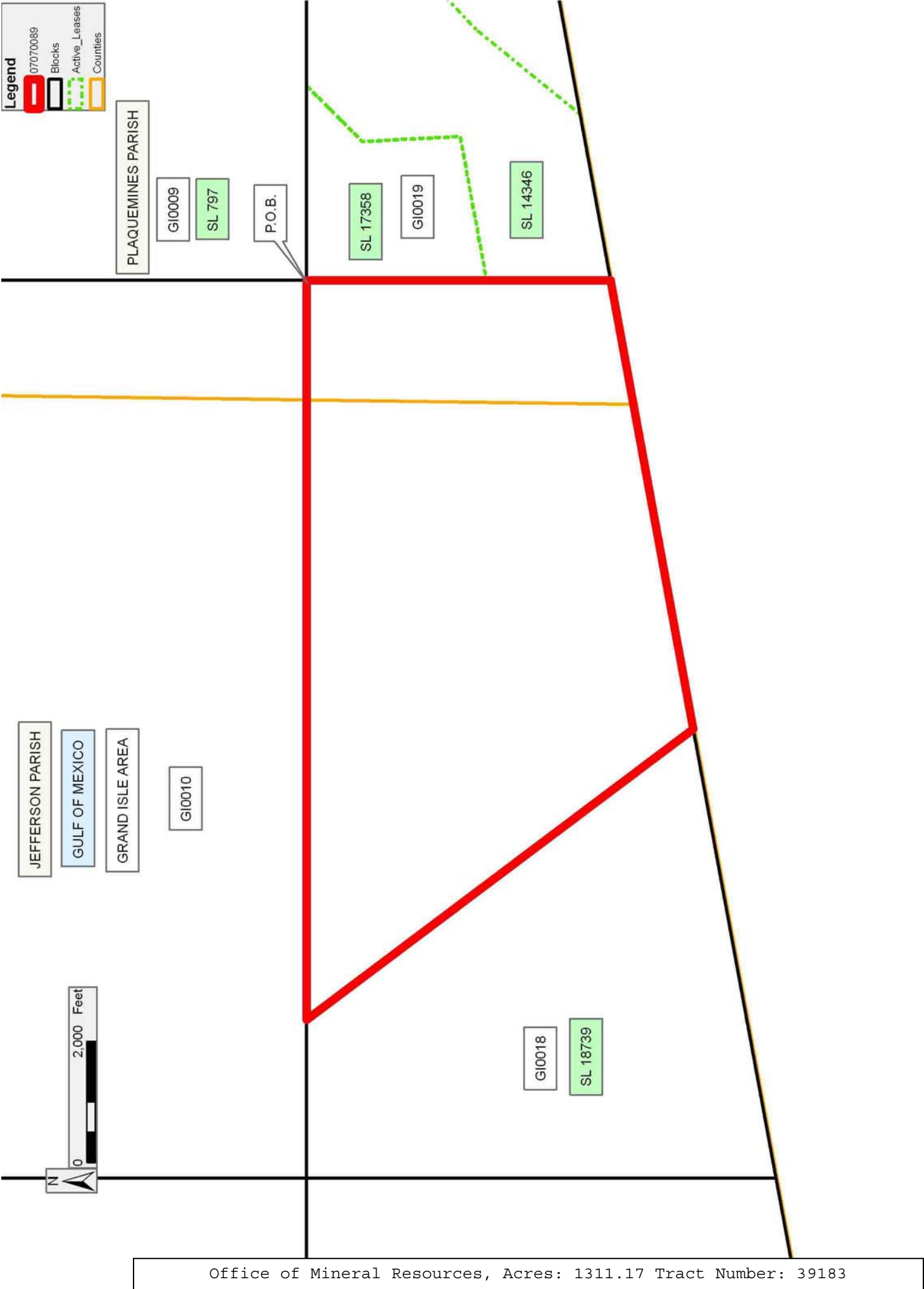
Legend

07070089

Blocks

Active_Leases

Counties



TRACT 39184 - Portion of Block 4, Bay Marchand Area, Lafourche Parish, Louisiana

The beds and bottoms of all water bodies belonging to the State of Louisiana located in Block 4, Bay Marchand Area, together with any present lands formed by accretion to the shoreline or islands formed therein, located in Lafourche Parish, Louisiana, owned by and not presently under mineral lease as of July 11, 2007, from the State of Louisiana, the geographical area of which is more fully described as follows: Beginning at the Northernmost corner of State Lease No. 18426, also being a point on the East boundary of State Lease No. 18367 having Coordinates of X = 2,354,677.73 and Y = 152,750.00; thence North 242.44 feet along the East boundary of said State Lease No. 18367 to its Northeast corner, also being a point on the Louisiana Coastline, as decreed by the Supreme Court of the United States, as determined by a Special Master appointed therein, in litigation styled *United States v. State of Louisiana et al No. 9 Original*, in 1975, having Coordinates of X = 2,354,677.73 and Y = 152,992.44; thence along said Louisiana Coastline the following courses: Northeasterly on a straight line to a point having Coordinates of X = 2,356,733 and Y = 154,323; Northeasterly on a straight line to a point having Coordinates of X = 2,362,830 and Y = 157,339 and Easterly on a straight line to a point on the West boundary of State Lease No. 1365 having Coordinates of X = 2,364,327.73 and Y = 157,348.59; thence South 2,176.59 feet along the West boundary of said State Lease No. 1365 to its Southwest corner, also being the Northwest corner of State Lease No. 1367 having Coordinates of X = 2,364,327.73 and Y = 155,172.00; thence continue South 1,512.00 feet along the West boundary of said State Lease No. 1367 to the Northeast corner of State Lease No. 18637 having Coordinates of X = 2,364,327.73 and Y = 153,660.00; thence along the boundary of said State Lease No. 18637 the following courses: West 3,002.73 feet to a point having Coordinates of X = 2,361,325.00 and Y = 153,660.00 and South 9,660.00 feet to a point having Coordinates of X = 2,361,325.00 and Y = 144,000.00; thence West 5,825.00 feet to a point on the East boundary of State Lease No. 16256, as amended, having Coordinates of X = 2,355,500.00 and Y = 144,000.00; thence along the boundary of said State Lease No. 16256 the following courses: North 368.53 feet to a point having Coordinates of X = 2,355,500.00 and Y = 144,368.53 and West 300.00 feet to its Northwest corner, also being the Southeast corner of State Lease No. 15310, as amended, having Coordinates of X = 2,355,200.00 and Y = 144,368.53; thence along the boundary of said State Lease No. 15310 the following courses: North 1,370.00 feet to a point having Coordinates of X = 2,355,200.00 and Y = 145,738.53 and West 522.27 feet to its Northwest corner, also being a point on the West line of Block 4, Bay Marchand Area, having Coordinates of X = 2,354,677.73 and Y = 145,738.53; thence North 911.47 feet along the West line of said Block 4 to the Southwest corner of said State Lease No. 18426 having Coordinates of X = 2,354,677.73 and Y = 146,650.00; thence along the boundary of said State Lease No. 18426 the following courses: East 2,925.00 feet to a point having Coordinates of X = 2,357,602.73 and Y = 146,650.00; North 3,350.00 feet to a point having Coordinates of X = 2,357,602.73 and Y = 150,000.00 and North 46 degrees 45

minutes 59 seconds West 4,014.74 feet to the point of beginning, containing approximately **1,563.88 acres**, all as more particularly outlined on a plat on file in the Office of Mineral Resources, Department of Natural Resources. All bearings, distances and coordinates are based on Louisiana Coordinate System of 1927, (North or South Zone).

NOTE: The above description of the Tract nominated for lease has been provided and corrected, where required, exclusively by the nomination party. Any mineral lease selected from this Tract and awarded by the Louisiana State Mineral Board shall be without warranty of any kind, either express, implied, or statutory, including, but not limited to, the implied warranties of merchantability and fitness for a particular purpose. Should the mineral lease awarded by the Louisiana State Mineral Board be subsequently modified, cancelled or abrogated due to the existence of conflicting leases, operating agreements, private claims or other future obligations or conditions which may affect all or any portion of the leased Tract, it shall not relieve the Lessee of the obligation to pay any bonus due thereon to the Louisiana State Mineral Board, nor shall the Louisiana State Mineral Board be obligated to refund any consideration paid by the Lessor prior to such modification, cancellation, or abrogation, including, but not limited to, bonuses, rentals and royalties.

NOTE: The State of Louisiana does hereby reserve, and this lease shall be subject to, the imprescriptible right of surface use in the nature of a servitude in favor of the Department of Natural Resources, including its Offices and Commissions, for the sole purpose of implementing, constructing, servicing and maintaining approved coastal zone management and/or restoration projects. Utilization of any and all rights derived under this lease by the mineral lessee, its agents, successors or assigns, shall not interfere with nor hinder the reasonable surface use by the Department of Natural Resources, its Offices or Commissions, as herein above reserved.

NOTE: It appears, according to our records, that a portion of this Tract is located within the restrictive safety fairway area as set out by the Corps of Engineers, U.S. Army and/or the restrictive anchorage area as set out by the U.S. Coast Guard.

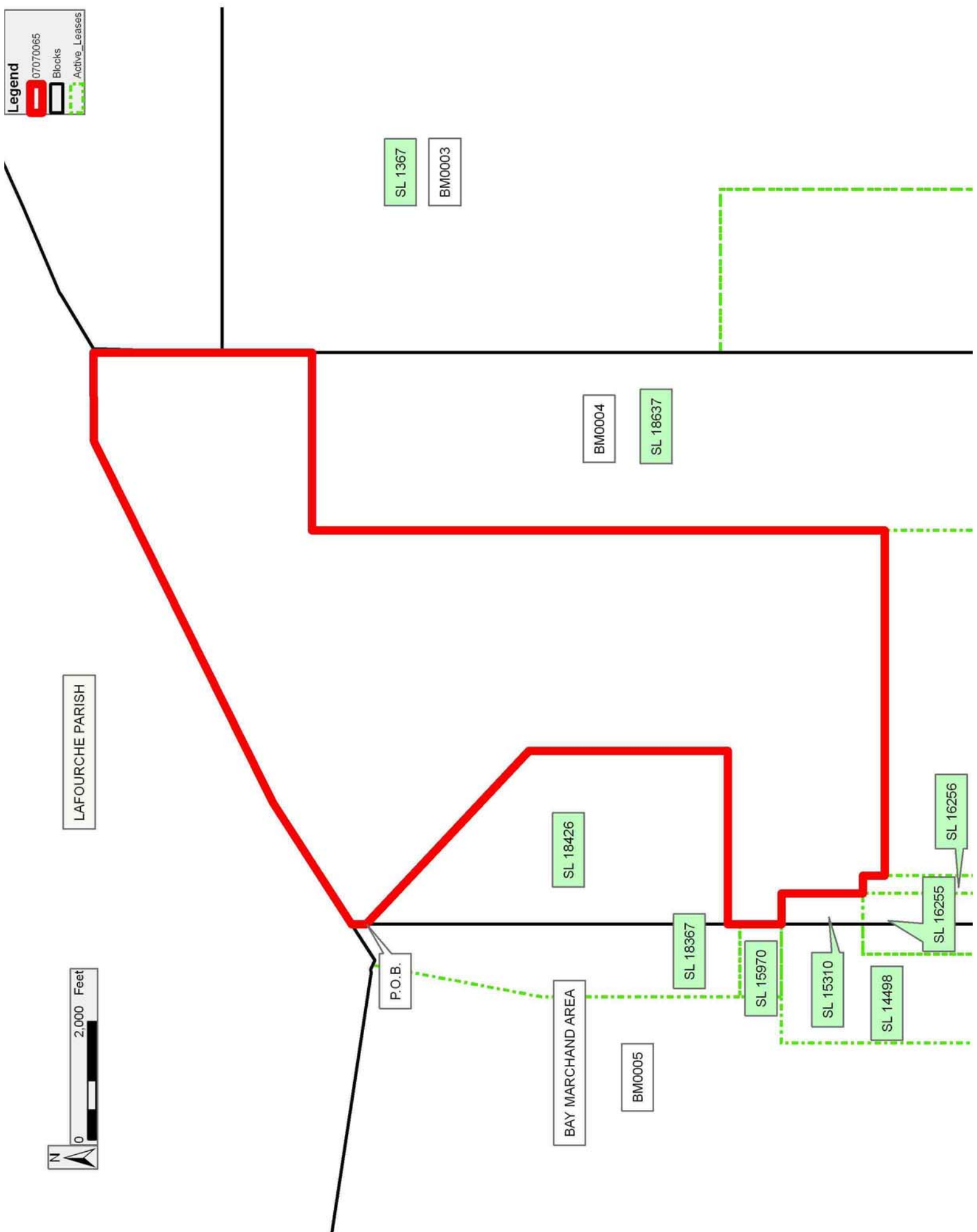
NOTE: The Department of Wildlife and Fisheries has designated certain areas in the coastal waters of the State of Louisiana as Oyster Seed Bed Areas. The exact location of those Seed Bed Areas must be obtained from the Department of Wildlife and Fisheries and any work done under a mineral lease from the State of Louisiana may necessarily be conducted in conformity with the rules and regulations promulgated by the said Department of Wildlife and Fisheries for Oyster Seed Bed Areas.

Applicant: CYPRESS ENERGY CORPORATION

Bidder	Cash Payment	Price/ Acre	Rental	Oil	Gas	Other

Legend

- 07070065
- Blocks
- Active_Leases



TRACT 39185 - Portion of Blocks 5, and 7, Bay Marchand Area, Lafourche Parish, Louisiana

The beds and bottoms of all water bodies belonging to the State of Louisiana located in Blocks 5, and 7, Bay Marchand Area, together with any present lands formed by accretion to the shoreline or islands formed therein, located in Lafourche Parish, Louisiana, owned by and not presently under mineral lease as of July 11, 2007, from the State of Louisiana, the geographical area of which is more fully described as follows: Beginning at a point on the East boundary of State Lease No. 192, as amended, also being a point on the Louisiana Coastline, as decreed by the Supreme Court of the United States, as determined by a Special Master appointed therein, in litigation styled *United States v. State of Louisiana et al* No. 9 Original, in 1975, having Coordinates of X = 2,340,952.61 and Y = 151,089.61; thence along said Louisiana Coastline the following courses: Northeasterly on a straight line to a point having Coordinates of X = 2,342,108 and Y = 151,526 and Northeasterly on a straight line to a point on the West boundary of State Lease No. 6748, as amended, having Coordinates of X = 2,346,834.69 and Y = 153,197.53; thence along the boundaries of said State Lease No. 6748 and State Lease No. 6430, as amended, the following courses: South 287.94 feet; South 22 degrees 32 minutes 06 seconds East 3,187.20 feet; South 4,227.21 feet and East 1,687.82 feet to a point having Coordinates of X = 2,349,744.00 and Y = 145,738.53; thence South 3,738.53 feet to a point within Block 5, Bay Marchand Area, having Coordinates of X = 2,349,744.00 and Y = 142,000.00; thence West 9,483.72 feet to a point within Block 7, Bay Marchand Area, having Coordinates of X = 2,340,260.28 and Y = 142,000.00; thence North 18 degrees 09 minutes 07 seconds East 6,242.02 feet to the Southeast corner of said State Lease No. 192 having Coordinates of X = 2,342,204.92 and Y = 147,931.37; thence North 21 degrees 37 minutes 46 seconds West 3,397.46 feet along the East boundary of said State Lease No. 192 to the point of beginning, containing approximately **1,697.21 acres**, all as more particularly outlined on a plat on file in the Office of Mineral Resources, Department of Natural Resources. All bearings, distances and coordinates are based on Louisiana Coordinate System of 1927, (North or South Zone).

NOTE: The above description of the Tract nominated for lease has been provided and corrected, where required, exclusively by the nomination party. Any mineral lease selected from this Tract and awarded by the Louisiana State Mineral Board shall be without warranty of any kind, either express, implied, or statutory, including, but not limited to, the implied warranties of merchantability and fitness for a particular purpose. Should the mineral lease awarded by the Louisiana State Mineral Board be subsequently modified, cancelled or abrogated due to the existence of conflicting leases, operating agreements, private claims or other future obligations or conditions which may affect all or any portion of the leased Tract, it shall not relieve the Lessee of the obligation to pay any bonus due thereon to the Louisiana State Mineral Board, nor shall the Louisiana State Mineral Board be obligated to refund any consideration

paid by the Lessor prior to such modification, cancellation, or abrogation, including, but not limited to, bonuses, rentals and royalties.

NOTE: The State of Louisiana does hereby reserve, and this lease shall be subject to, the imprescriptible right of surface use in the nature of a servitude in favor of the Department of Natural Resources, including its Offices and Commissions, for the sole purpose of implementing, constructing, servicing and maintaining approved coastal zone management and/or restoration projects. Utilization of any and all rights derived under this lease by the mineral lessee, its agents, successors or assigns, shall not interfere with nor hinder the reasonable surface use by the Department of Natural Resources, its Offices or Commissions, as herein above reserved.

NOTE: It appears, according to our records, that a portion of this Tract is located within the restrictive safety fairway area as set out by the Corps of Engineers, U.S. Army and/or the restrictive anchorage area as set out by the U.S. Coast Guard.

NOTE: The Department of Wildlife and Fisheries has designated certain areas in the coastal waters of the State of Louisiana as Oyster Seed Bed Areas. The exact location of those Seed Bed Areas must be obtained from the Department of Wildlife and Fisheries and any work done under a mineral lease from the State of Louisiana may necessarily be conducted in conformity with the rules and regulations promulgated by the said Department of Wildlife and Fisheries for Oyster Seed Bed Areas.

Applicant: CYPRESS ENERGY CORPORATION

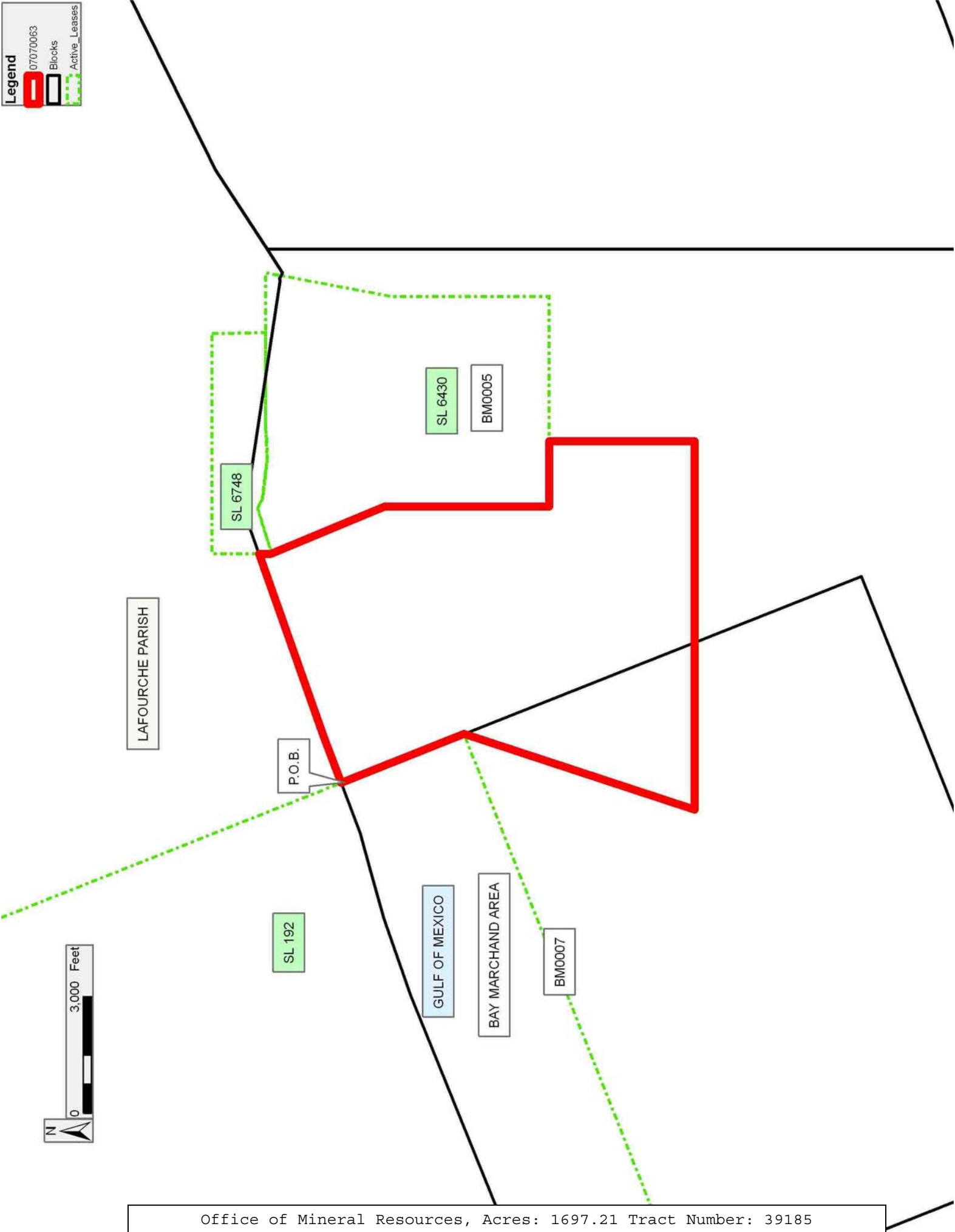
Bidder	Cash Payment	Price/ Acre	Rental	Oil	Gas	Other

Legend

07070063

Blocks

Active_Leases



TRACT 39186 - Portion of Block 7, Bay Marchand Area, Lafourche Parish, Louisiana

The beds and bottoms of all water bodies belonging to the State of Louisiana located in Block 7, Bay Marchand Area, together with any present lands formed by accretion to the shoreline or islands formed therein, located in Lafourche Parish, Louisiana, owned by and not presently under mineral lease as of July 11, 2007, from the State of Louisiana, the geographical area of which is more fully described as follows: Beginning at a point within Block 7, Bay Marchand Area, also being the Southwest corner of State Lease No. 192, as amended, having Coordinates of X = 2,327,480.19 and Y = 142,092.69; thence North 68 degrees 22 minutes 14 second East 15,840.08 feet along the South boundary of said State Lease No. 192 to its Southeast corner having Coordinates of X = 2,342,204.92 and Y = 147,931.37; thence South 18 degrees 09 minutes 07 seconds West 14,313.73 feet to the Northernmost Northwest corner of State Lease No. 18528 having Coordinates of X = 2,337,745.62 and Y = 134,330.00; thence North 61 degrees 05 minutes 55 seconds West 6,180.37 feet to the Southwest corner of State Lease No. 18772 having Coordinates of X = 2,332,335.00 and Y = 137,317.00; thence along the boundary of said State Lease No. 18772 the following courses: North 71 degrees 17 minutes 20 seconds East 3,740.70 feet to a point having Coordinates of X = 2,335,878.00 and Y = 138,517.00; North 15 degrees 47 minutes 14 seconds West 746.15 feet to a point having Coordinates of X = 2,335,675.00 and Y = 139,235.00; North 68 degrees 23 minutes 29 seconds East 2,758.89 feet to a point having Coordinates of X = 2,338,240.00 and Y = 140,251.00; North 21 degrees 04 minutes 34 seconds West 2,669.58 feet to a point having Coordinates of X = 2,337,280.00 and Y = 142,742.00; South 74 degrees 35 minutes 06 seconds West 1,320.50 feet to a point having Coordinates of X = 2,336,007.00 and Y = 142,391.00; North 39 degrees 16 minutes 27 seconds West 786.69 feet to a point having Coordinates of X = 2,335,509.00 and Y = 143,000.00; South 66 degrees 24 minutes 16 seconds West 1,933.66 feet to a point having Coordinates of X = 2,333,737.00 and Y = 142,226.00; South 21 degrees 22 minutes 55 seconds East 811.88 feet to a point having Coordinates of X = 2,334,033.00 and Y = 141,470.00; South 67 degrees 38 minutes 47 seconds West 2,234.95 feet to a point having Coordinates of X = 2,331,966.00 and Y = 140,620.00; South 12 degrees 46 minutes 04 seconds East 1,248.88 feet to a point having Coordinates of X = 2,332,242.00 and Y = 139,402.00 and South 41 degrees 02 minutes 38 seconds West 758.41 feet to its Westernmost Northwest corner having Coordinates of X = 2,331,744.00 and Y = 138,830.00; thence North 52 degrees 34 minutes 36 seconds West 5,368.91 feet to the point of beginning, containing approximately **1,600.82 acres**, all as more particularly outlined on a plat on file in the Office of Mineral Resources, Department of Natural Resources. All bearings, distances and coordinates are based on Louisiana Coordinate System of 1927, (North or South Zone).

NOTE: The above description of the Tract nominated for lease has been provided and corrected, where required, exclusively by the nomination party. Any mineral lease selected from this Tract and awarded by the

Louisiana State Mineral Board shall be without warranty of any kind, either express, implied, or statutory, including, but not limited to, the implied warranties of merchantability and fitness for a particular purpose. Should the mineral lease awarded by the Louisiana State Mineral Board be subsequently modified, cancelled or abrogated due to the existence of conflicting leases, operating agreements, private claims or other future obligations or conditions which may affect all or any portion of the leased Tract, it shall not relieve the Lessee of the obligation to pay any bonus due thereon to the Louisiana State Mineral Board, nor shall the Louisiana State Mineral Board be obligated to refund any consideration paid by the Lessor prior to such modification, cancellation, or abrogation, including, but not limited to, bonuses, rentals and royalties.

NOTE: The State of Louisiana does hereby reserve, and this lease shall be subject to, the imprescriptible right of surface use in the nature of a servitude in favor of the Department of Natural Resources, including its Offices and Commissions, for the sole purpose of implementing, constructing, servicing and maintaining approved coastal zone management and/or restoration projects. Utilization of any and all rights derived under this lease by the mineral lessee, its agents, successors or assigns, shall not interfere with nor hinder the reasonable surface use by the Department of Natural Resources, its Offices or Commissions, as herein above reserved.

NOTE: It appears, according to our records, that a portion of this Tract is located within the restrictive safety fairway area as set out by the Corps of Engineers, U.S. Army and/or the restrictive anchorage area as set out by the U.S. Coast Guard.

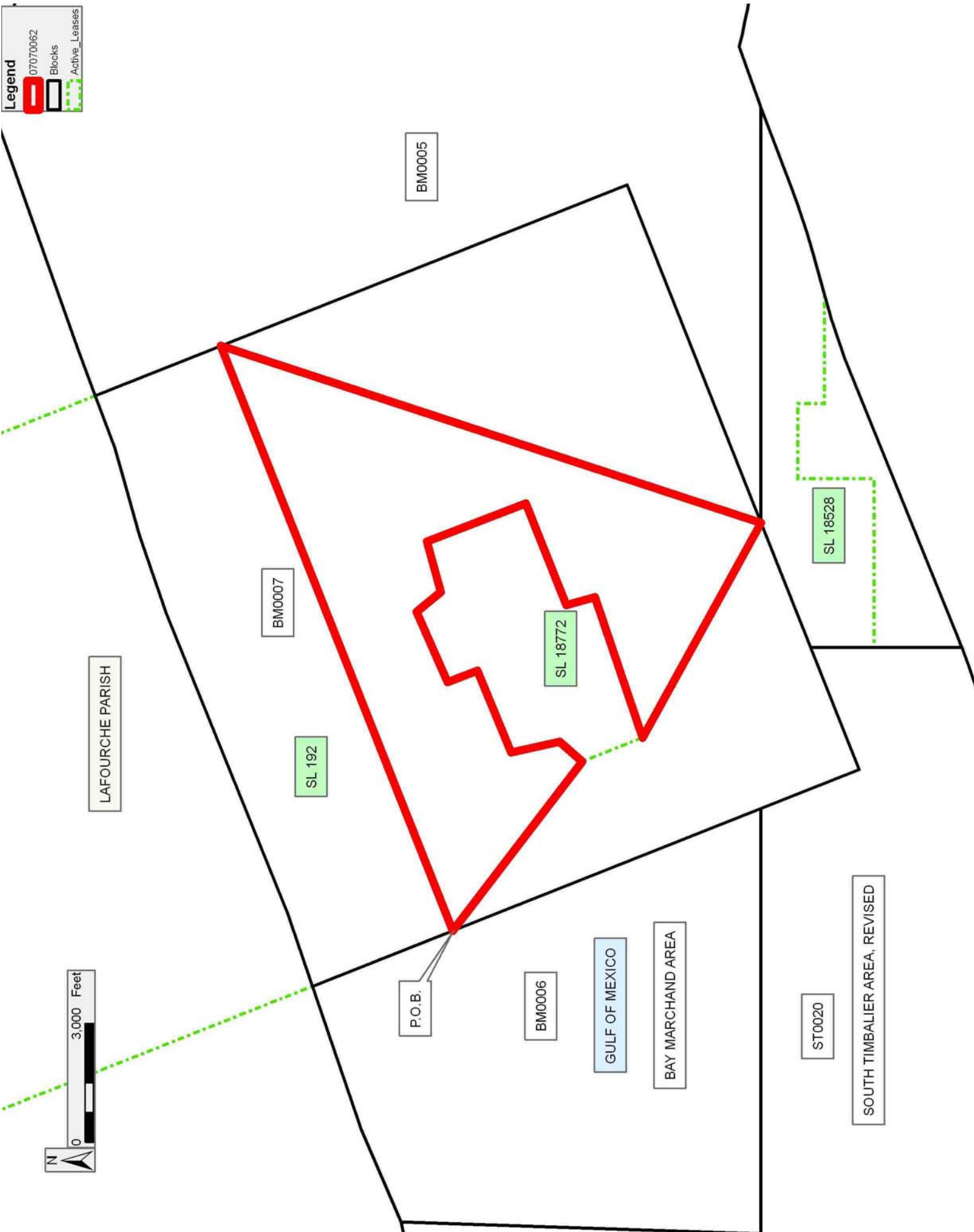
NOTE: The Department of Wildlife and Fisheries has designated certain areas in the coastal waters of the State of Louisiana as Oyster Seed Bed Areas. The exact location of those Seed Bed Areas must be obtained from the Department of Wildlife and Fisheries and any work done under a mineral lease from the State of Louisiana may necessarily be conducted in conformity with the rules and regulations promulgated by the said Department of Wildlife and Fisheries for Oyster Seed Bed Areas.

Bidder	Cash Payment	Price/ Acre	Rental	Oil	Gas	Other

Applicant: CYPRESS ENERGY CORPORATION

Legend

- 07070062
- Blocks
- Active_Leases



TRACT 39187 - Portion of Blocks 4, and 5, Bay Marchand Area, Lafourche Parish, Louisiana

The beds and bottoms of all water bodies belonging to the State of Louisiana located in Blocks 4, and 5, Bay Marchand Area, together with any present lands formed by accretion to the shoreline or islands formed therein, located in Lafourche Parish, Louisiana, owned by and not presently under mineral lease as of July 11, 2007, from the State of Louisiana, the geographical area of which is more fully described as follows: Beginning at a point within Block 5, Bay Marchand Area, also being a point on the South boundary of State Lease No. 6430, as amended, having Coordinates of X = 2,349,744.00 and Y = 145,738.53; thence East 3,316.99 feet along the South boundary of said State Lease No. 6430 to the Northwest corner of State Lease No. 14498, as amended, having Coordinates of X = 2,353,060.99 and Y = 145,738.53; thence along the boundary of said State Lease No. 14498 the following courses: South 3,000.00 feet to a point having Coordinates of X = 2,353,060.99 and Y = 142,738.53; East 300.00 feet to a point having Coordinates of X = 2,353,360.99 and Y = 142,738.53; South 3,788.53 feet to a point having Coordinates of X = 2,353,360.99 and Y = 138,950.00; East 816.74 feet to a point having Coordinates of X = 2,354,177.73 and Y = 138,950.00 and North 772.13 feet to the Southwest corner of State Lease No. 16255 having Coordinates of X = 2,354,177.73 and Y = 139,722.13; thence East 500.00 feet along the South boundary of said State Lease No. 16255 to its Southeast corner, also being the Southwest corner of State Lease No. 16257 having Coordinates of X = 2,354,677.73 and Y = 139,722.13; thence East 522.27 feet along the South boundary of said State Lease No. 16257 to its Southeast corner, also being the Southwest corner of State Lease No. 16256, as amended, having Coordinates of X = 2,355,200.00 and Y = 139,722.13; thence along the boundary of said State Lease No. 16256 the following courses: East 300.00 feet to a point having Coordinates of X = 2,355,500.00 and Y = 139,722.13 and North 4,277.87 feet to a point having Coordinates of X = 2,355,500.00 and Y = 144,000.00; thence East 5,825.00 feet to a point on the West boundary of State Lease No. 18637 having Coordinates of X = 2,361,325.00 and Y = 144,000.00; thence South 8,136.47 feet along the West boundary of said State Lease No. 18637 to its Southwest corner, also being a point on the Three Mile Line, as decreed by the Supreme Court of the United States, as determined by a Special Master appointed therein, in litigation styled *United States v. State of Louisiana et al No. 9 Original*, in 1975, having Coordinates of X = 2,361,325.00 and Y = 135,863.53; thence Southwesterly, along said Three Mile Line, along an arc to the right with a radius of 18,240.60 feet and center at X = 2,354,070 and Y = 152,599 to a point having Coordinates of X = 2,349,744 and Y = 134,879; thence North 10,859.53 feet to the point of beginning, containing approximately **2,363.20 acres, LESS AND EXCEPT** that portion thereof, if any, lying seaward of the line three nautical miles from the coast line of Louisiana, as said three mile line has been decreed by the Supreme Court of the United States, as determined by a Special Master appointed therein, in litigation styled **United States v. State of Louisiana et al No. 9 Original**, in 1975, all as more particularly outlined on a plat in the

Office of Mineral Resources, Department of Natural Resources. All bearings, distances and coordinates are based on the Louisiana Coordinate System of 1927, (South Zone).

NOTE: The above description of the Tract nominated for lease has been provided and corrected, where required, exclusively by the nomination party. Any mineral lease selected from this Tract and awarded by the Louisiana State Mineral Board shall be without warranty of any kind, either express, implied, or statutory, including, but not limited to, the implied warranties of merchantability and fitness for a particular purpose. Should the mineral lease awarded by the Louisiana State Mineral Board be subsequently modified, cancelled or abrogated due to the existence of conflicting leases, operating agreements, private claims or other future obligations or conditions which may affect all or any portion of the leased Tract, it shall not relieve the Lessee of the obligation to pay any bonus due thereon to the Louisiana State Mineral Board, nor shall the Louisiana State Mineral Board be obligated to refund any consideration paid by the Lessor prior to such modification, cancellation, or abrogation, including, but not limited to, bonuses, rentals and royalties.

NOTE: The State of Louisiana does hereby reserve, and this lease shall be subject to, the imprescriptible right of surface use in the nature of a servitude in favor of the Department of Natural Resources, including its Offices and Commissions, for the sole purpose of implementing, constructing, servicing and maintaining approved coastal zone management and/or restoration projects. Utilization of any and all rights derived under this lease by the mineral lessee, its agents, successors or assigns, shall not interfere with nor hinder the reasonable surface use by the Department of Natural Resources, its Offices or Commissions, as herein above reserved.

NOTE: It appears, according to our records, that a portion of this Tract is located within the restrictive safety fairway area as set out by the Corps of Engineers, U.S. Army and/or the restrictive anchorage area as set out by the U.S. Coast Guard.

Applicant: CYPRESS ENERGY CORPORATION

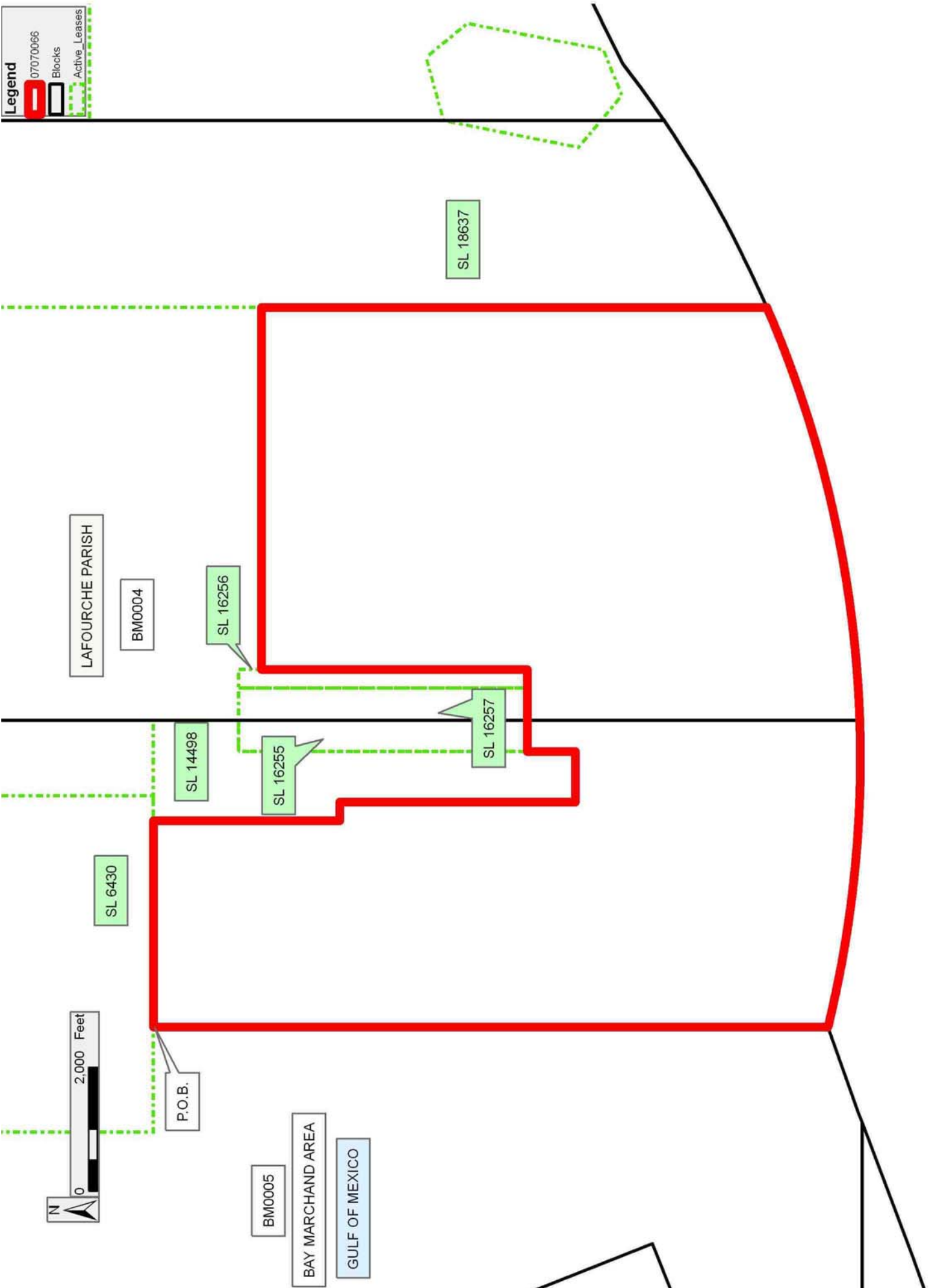
Bidder	Cash Payment	Price/ Acre	Rental	Oil	Gas	Other

Legend

07070066

Blocks

Active Leases



TRACT 39188 - Portion of Block 6, Bay Marchand Area, and Block 15, South Timbalier Area, Revised, Lafourche Parish, Louisiana

The beds and bottoms of all water bodies belonging to the State of Louisiana located in Block 6, Bay Marchand Area, and Block 15, South Timbalier Area, Revised, together with any present lands formed by accretion to the shoreline or islands formed therein, located in Lafourche Parish, Louisiana, owned by and not presently under mineral lease as of July 11, 2007, from the State of Louisiana, the geographical area of which is more fully described as follows: Beginning at a point within Block 15, South Timbalier Area, Revised, also being a point on the Southern boundary of State Lease No. 1772, as amended, having Coordinates of X = 2,318,195.27 and Y = 142,701.00; thence along the boundary of said State Lease No. 1772 the following courses: North 67 degrees 35 minutes 37 seconds East 3,056.34 feet to a point having Coordinates of X = 2,321,020.87 and Y = 143,866.00; North 67 degrees 37 minutes 51 seconds East 525.53 feet to a point having Coordinates of X = 2,321,506.85 and Y = 144,066.00 and North 67 degrees 35 minutes 02 seconds East 589.14 feet to a point on the Louisiana Coastline, as decreed by the Supreme Court of the United States, as determined by a Special Master appointed therein, in litigation styled *United States v. State of Louisiana et al No. 9 Original*, in 1975, having Coordinates of X = 2,322,051.47 and Y = 144,290.66; thence along said Louisiana Coastline the following courses: Northeasterly on a straight line to a point having Coordinates of X = 2,322,466 and Y = 144,396 and Northeasterly on a straight line to a point on the West boundary of State Lease No. 192, as amended, having Coordinates of X = 2,326,080.56 and Y = 145,622.45; thence South 21 degrees 37 minutes 46 seconds East 3,797.13 feet along the West boundary of said State Lease No. 192 to its Southwest corner having Coordinates of X = 2,327,480.19 and Y = 142,092.69; thence South 7,762.69 feet to a point on the South line of Block 6, Bay Marchand Area, having Coordinates of X = 2,327,480.19 and Y = 134,330.00; thence West 12,654.83 feet to a point on the South line of said Block 15, also being the Southeast corner of State Lease No. 18773 having Coordinates of X = 2,314,825.36 and Y = 134,330.00; thence along the boundary of said State Lease No. 18773 the following courses: North 00 degrees 32 minutes 40 seconds East 1,751.08 feet to a point having Coordinates of X = 2,314,842.00 and Y = 136,081.00; North 72 degrees 16 minutes 00 seconds East 3,874.08 feet to a point having Coordinates of X = 2,318,532.00 and Y = 137,261.00; North 17 degrees 13 minutes 23 seconds West 1,121.28 feet to a point having Coordinates of X = 2,318,200.00 and Y = 138,332.00; North 71 degrees 32 minutes 07 seconds East 1,743.92 feet to a point having Coordinates of X = 2,319,854.14 and Y = 138,884.34 and North 1,597.92 feet to its Easternmost Northeast corner having Coordinates of X = 2,319,854.14 and Y = 140,482.26; thence North 36 degrees 47 minutes 03 seconds West 2,770.32 feet to the point of beginning, containing approximately **2,157.13 acres**, all as more particularly outlined on a plat on file in the Office of Mineral Resources, Department of Natural Resources. All bearings, distances and coordinates are based on Louisiana Coordinate System of 1927, (North or South Zone).

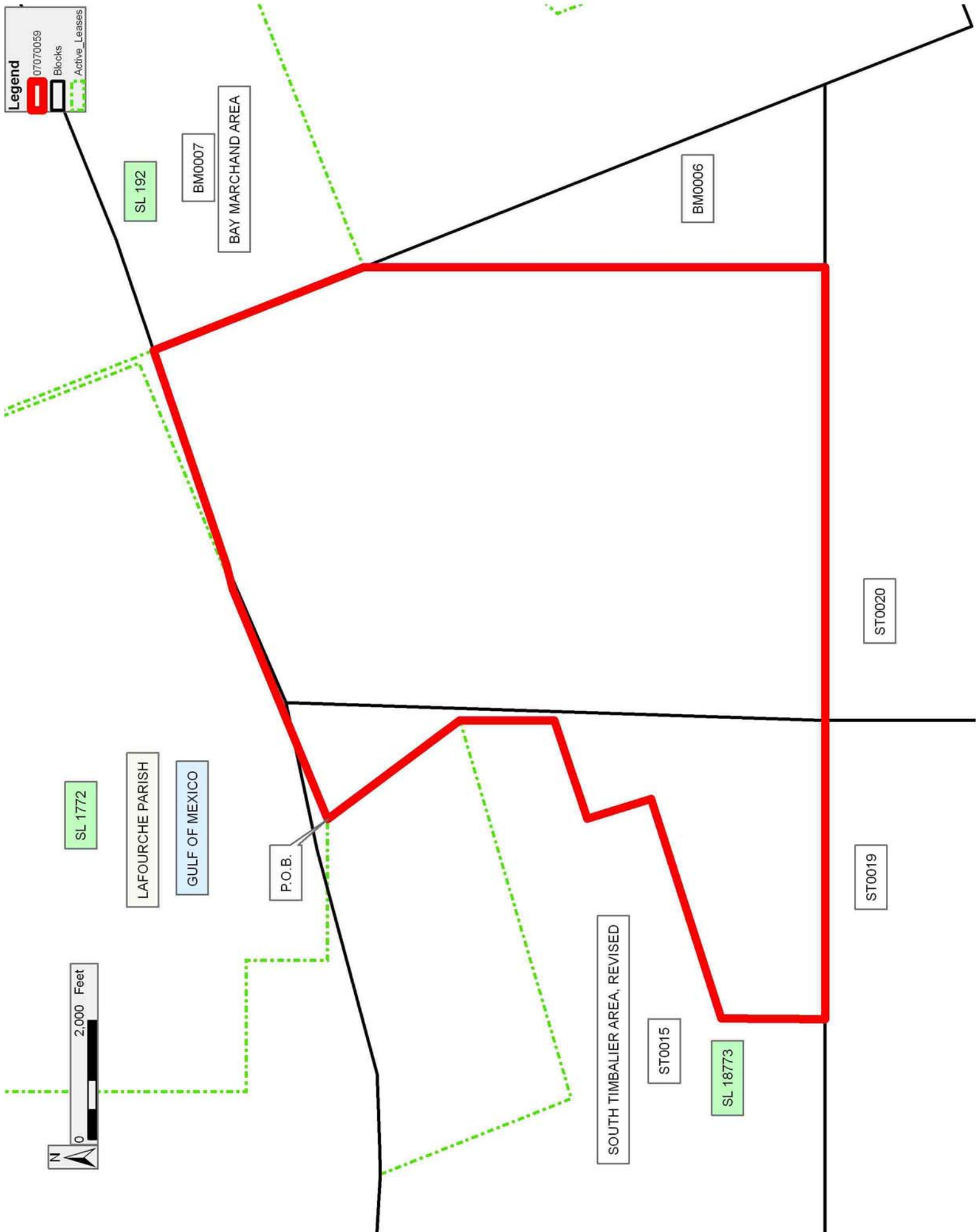
NOTE: The above description of the Tract nominated for lease has been provided and corrected, where required, exclusively by the nomination party. Any mineral lease selected from this Tract and awarded by the Louisiana State Mineral Board shall be without warranty of any kind, either express, implied, or statutory, including, but not limited to, the implied warranties of merchantability and fitness for a particular purpose. Should the mineral lease awarded by the Louisiana State Mineral Board be subsequently modified, cancelled or abrogated due to the existence of conflicting leases, operating agreements, private claims or other future obligations or conditions which may affect all or any portion of the leased Tract, it shall not relieve the Lessee of the obligation to pay any bonus due thereon to the Louisiana State Mineral Board, nor shall the Louisiana State Mineral Board be obligated to refund any consideration paid by the Lessor prior to such modification, cancellation, or abrogation, including, but not limited to, bonuses, rentals and royalties.

NOTE: The State of Louisiana does hereby reserve, and this lease shall be subject to, the imprescriptible right of surface use in the nature of a servitude in favor of the Department of Natural Resources, including its Offices and Commissions, for the sole purpose of implementing, constructing, servicing and maintaining approved coastal zone management and/or restoration projects. Utilization of any and all rights derived under this lease by the mineral lessee, its agents, successors or assigns, shall not interfere with nor hinder the reasonable surface use by the Department of Natural Resources, its Offices or Commissions, as herein above reserved.

NOTE: The Department of Wildlife and Fisheries has designated certain areas in the coastal waters of the State of Louisiana as Oyster Seed Bed Areas. The exact location of those Seed Bed Areas must be obtained from the Department of Wildlife and Fisheries and any work done under a mineral lease from the State of Louisiana may necessarily be conducted in conformity with the rules and regulations promulgated by the said Department of Wildlife and Fisheries for Oyster Seed Bed Areas.

Applicant: CYPRESS ENERGY CORPORATION

Bidder	Cash Payment	Price/ Acre	Rental	Oil	Gas	Other



TRACT 39189 - Portion of Blocks 5, and 7, Bay Marchand Area, Lafourche Parish, Louisiana

The beds and bottoms of all water bodies belonging to the State of Louisiana located in Blocks 5, and 7, Bay Marchand Area, together with any present lands formed by accretion to the shoreline or islands formed therein, located in Lafourche Parish, Louisiana, owned by and not presently under mineral lease as of July 11, 2007, from the State of Louisiana, the geographical area of which is more fully described as follows: Beginning at a point within Block 7, Bay Marchand Area, having Coordinates of X = 2,340,260.28 and Y = 142,000.00; thence East 9,483.72 feet to a point within Block 5, Bay Marchand Area, having Coordinates of X = 2,349,744.00 and Y = 142,000.00; thence South 7,121.00 feet to a point on the Three Mile Line, as decreed by the Supreme Court of the United States, as determined by a Special Master appointed therein, in litigation styled *United States v. State of Louisiana et al No. 9 Original*, in 1975, having Coordinates of X = 2,349,744 and Y = 134,879; Southwesterly on a straight line to a point having Coordinates of X = 2,348,372 and Y = 134,394 and Southwesterly on a straight line to the Northeast corner of State Lease No. 18528 having Coordinates of X = 2,348,202.62 and Y = 134,330.00; thence West 10,457.00 feet along the North boundary of said State Lease No. 18528 to its Northwest corner having Coordinates of X = 2,337,745.62 and Y = 134,330.00; thence North 18 degrees 09 minutes 07 seconds East 8,071.70 feet to the point of beginning, containing approximately **1,881.49 acres, LESS AND EXCEPT** that portion thereof, if any, lying seaward of the line three nautical miles from the coast line of Louisiana, as said three mile line has been decreed by the Supreme Court of the United States, as determined by a Special Master appointed therein, in litigation styled **United States v. State of Louisiana et al No. 9 Original**, in 1975, all as more particularly outlined on a plat in the Office of Mineral Resources, Department of Natural Resources. All bearings, distances and coordinates are based on the Louisiana Coordinate System of 1927, (South Zone).

NOTE: The above description of the Tract nominated for lease has been provided and corrected, where required, exclusively by the nomination party. Any mineral lease selected from this Tract and awarded by the Louisiana State Mineral Board shall be without warranty of any kind, either express, implied, or statutory, including, but not limited to, the implied warranties of merchantability and fitness for a particular purpose. Should the mineral lease awarded by the Louisiana State Mineral Board be subsequently modified, cancelled or abrogated due to the existence of conflicting leases, operating agreements, private claims or other future obligations or conditions which may affect all or any portion of the leased Tract, it shall not relieve the Lessee of the obligation to pay any bonus due thereon to the Louisiana State Mineral Board, nor shall the Louisiana State Mineral Board be obligated to refund any consideration paid by the Lessor prior to such modification, cancellation, or abrogation, including, but not limited to, bonuses, rentals and royalties.

NOTE: The State of Louisiana does hereby reserve, and this lease shall be subject to, the imprescriptible right of surface use in the nature of a servitude in favor of the Department of Natural Resources, including its Offices and Commissions, for the sole purpose of implementing, constructing, servicing and maintaining approved coastal zone management and/or restoration projects. Utilization of any and all rights derived under this lease by the mineral lessee, its agents, successors or assigns, shall not interfere with nor hinder the reasonable surface use by the Department of Natural Resources, its Offices or Commissions, as herein above reserved.

NOTE: It appears, according to our records, that a portion of this Tract is located within the restrictive safety fairway area as set out by the Corps of Engineers, U.S. Army and/or the restrictive anchorage area as set out by the U.S. Coast Guard.

Applicant: CYPRESS ENERGY CORPORATION

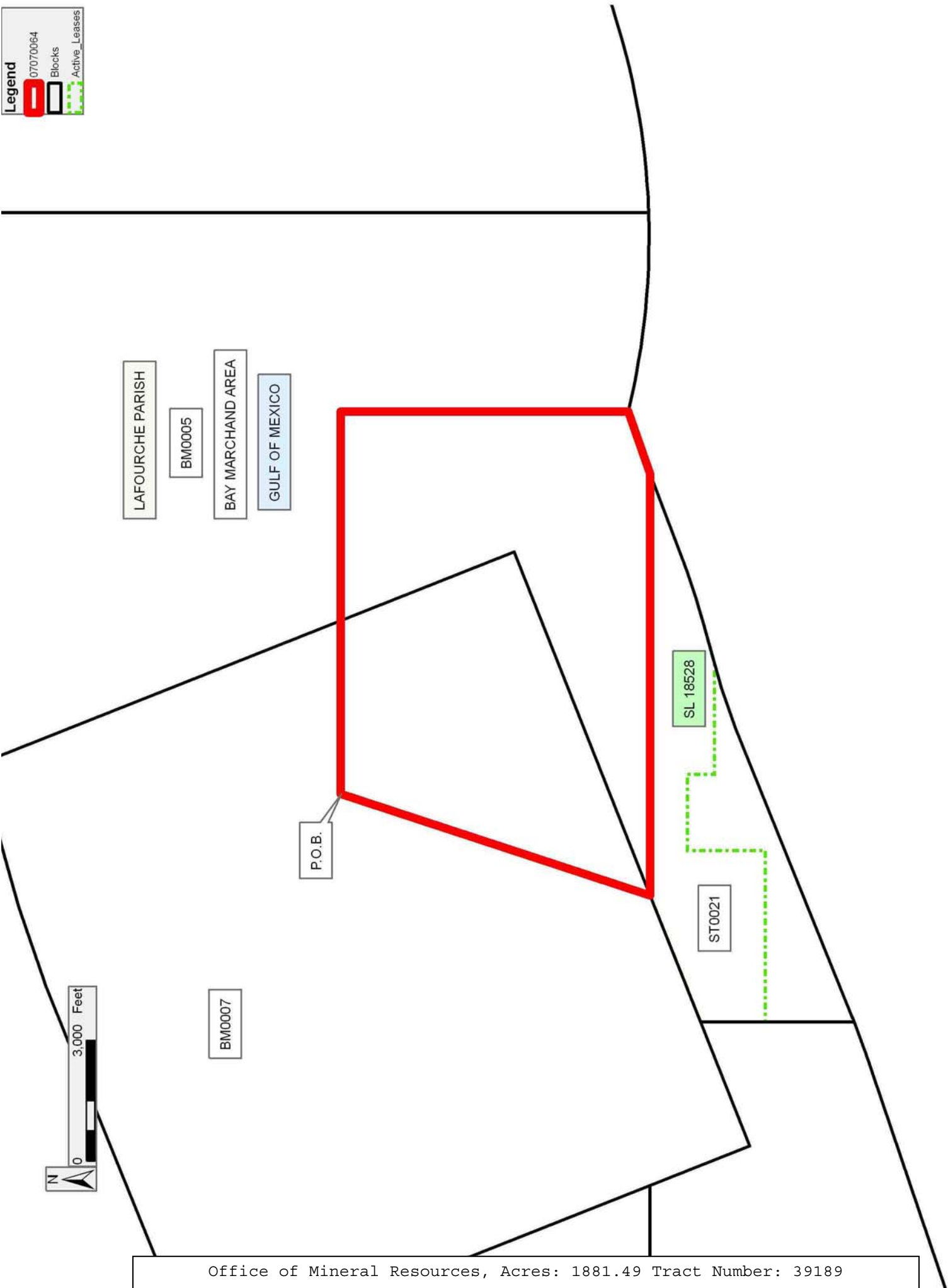
Bidder	Cash Payment	Price/ Acre	Rental	Oil	Gas	Other

Legend

07070064

Blocks

Active_Leases



TRACT 39190 - Portion of Blocks 6, and 7, Bay Marchand Area, and Block 20, South Timbalier Area, Revised, Lafourche Parish, Louisiana

The beds and bottoms of all water bodies belonging to the State of Louisiana located in Blocks 6, and 7, Bay Marchand Area, and Block 20, South Timbalier Area, Revised, together with any present lands formed by accretion to the shoreline or islands formed therein, located in Lafourche Parish, Louisiana, owned by and not presently under mineral lease as of July 11, 2007, from the State of Louisiana, the geographical area of which is more fully described as follows: Beginning at a point on the West line of Block 7, Bay Marchand Area, also being the Southwest corner of State Lease No. 192, as amended, having Coordinates of X = 2,327,480.19 and Y = 142,092.69; thence South 52 degrees 34 minutes 36 seconds East 5,368.91 feet to the Westernmost Northwest corner of State Lease No. 18772 having Coordinates of X = 2,331,744.00 and Y = 138,830.00; thence South 21 degrees 20 minutes 11 seconds East 1,624.33 feet along the Western boundary of said State Lease No. 18772 to its Southwest corner having Coordinates of X = 2,332,335.00 and Y = 137,317.00; thence South 61 degrees 05 minutes 55 seconds East 6,180.37 feet to the Northernmost Northwest corner of State Lease No. 18528 having Coordinates of X = 2,337,745.62 and Y = 134,330.00; thence along the boundary of said State Lease No. 18528 the following courses: South 68 degrees 22 minutes 13 seconds West 3,370.79 feet to a point having Coordinates of X = 2,334,612.18 and Y = 133,087.50 and South 1,608.21 feet its Southwest corner, also being the Westernmost Northwest corner of State Lease No. 1423 having Coordinates of X = 2,334,612.18 and Y = 131,479.29; thence South 2,202.17 feet along the West boundary of said State Lease No. 1423 to its Southwest corner, also being a point on the Three Mile Line, as decreed by the Supreme Court of the United States, as determined by a Special Master appointed therein, in litigation styled *United States v. State of Louisiana et al No. 9 Original*, in 1975, having Coordinates of X = 2,334,612.18 and Y = 129,277.12; thence along said Three Mile Line the following courses: Southwesterly along an arc to the right having a radius of 18,240.60 feet and a center of X = 2,327,933 and Y = 146,251 to a point having Coordinates of X = 2,333,794 and Y = 128,978; Southwesterly on a straight line to a point having Coordinates of X = 2,328,327 and Y = 127,123 and Southwesterly along an arc to the right having a radius of 18,240.60 feet and a center of X = 2,322,466 and Y = 144,396 to a point having Coordinates of X = 2,327,480.19 and Y = 126,857.98; thence North 15,234.70 feet to the point of beginning, containing approximately **1,909.79 acres, LESS AND EXCEPT** that portion thereof, if any, lying seaward of the line three nautical miles from the coast line of Louisiana, as said three mile line has been decreed by the Supreme Court of the United States, as determined by a Special Master appointed therein, in litigation styled **United States v. State of Louisiana et al No. 9 Original**, in 1975, all as more particularly outlined on a plat in the Office of Mineral Resources, Department of Natural Resources. All bearings, distances and coordinates are based on the Louisiana Coordinate System of 1927, (South Zone).

NOTE: The above description of the Tract nominated for lease has been provided and corrected, where required, exclusively by the nomination party. Any mineral lease selected from this Tract and awarded by the Louisiana State Mineral Board shall be without warranty of any kind, either express, implied, or statutory, including, but not limited to, the implied warranties of merchantability and fitness for a particular purpose. Should the mineral lease awarded by the Louisiana State Mineral Board be subsequently modified, cancelled or abrogated due to the existence of conflicting leases, operating agreements, private claims or other future obligations or conditions which may affect all or any portion of the leased Tract, it shall not relieve the Lessee of the obligation to pay any bonus due thereon to the Louisiana State Mineral Board, nor shall the Louisiana State Mineral Board be obligated to refund any consideration paid by the Lessor prior to such modification, cancellation, or abrogation, including, but not limited to, bonuses, rentals and royalties.

NOTE: The State of Louisiana does hereby reserve, and this lease shall be subject to, the imprescriptible right of surface use in the nature of a servitude in favor of the Department of Natural Resources, including its Offices and Commissions, for the sole purpose of implementing, constructing, servicing and maintaining approved coastal zone management and/or restoration projects. Utilization of any and all rights derived under this lease by the mineral lessee, its agents, successors or assigns, shall not interfere with nor hinder the reasonable surface use by the Department of Natural Resources, its Offices or Commissions, as herein above reserved.

NOTE: It appears, according to our records, that a portion of this Tract is located within the restrictive safety fairway area as set out by the Corps of Engineers, U.S. Army and/or the restrictive anchorage area as set out by the U.S. Coast Guard.

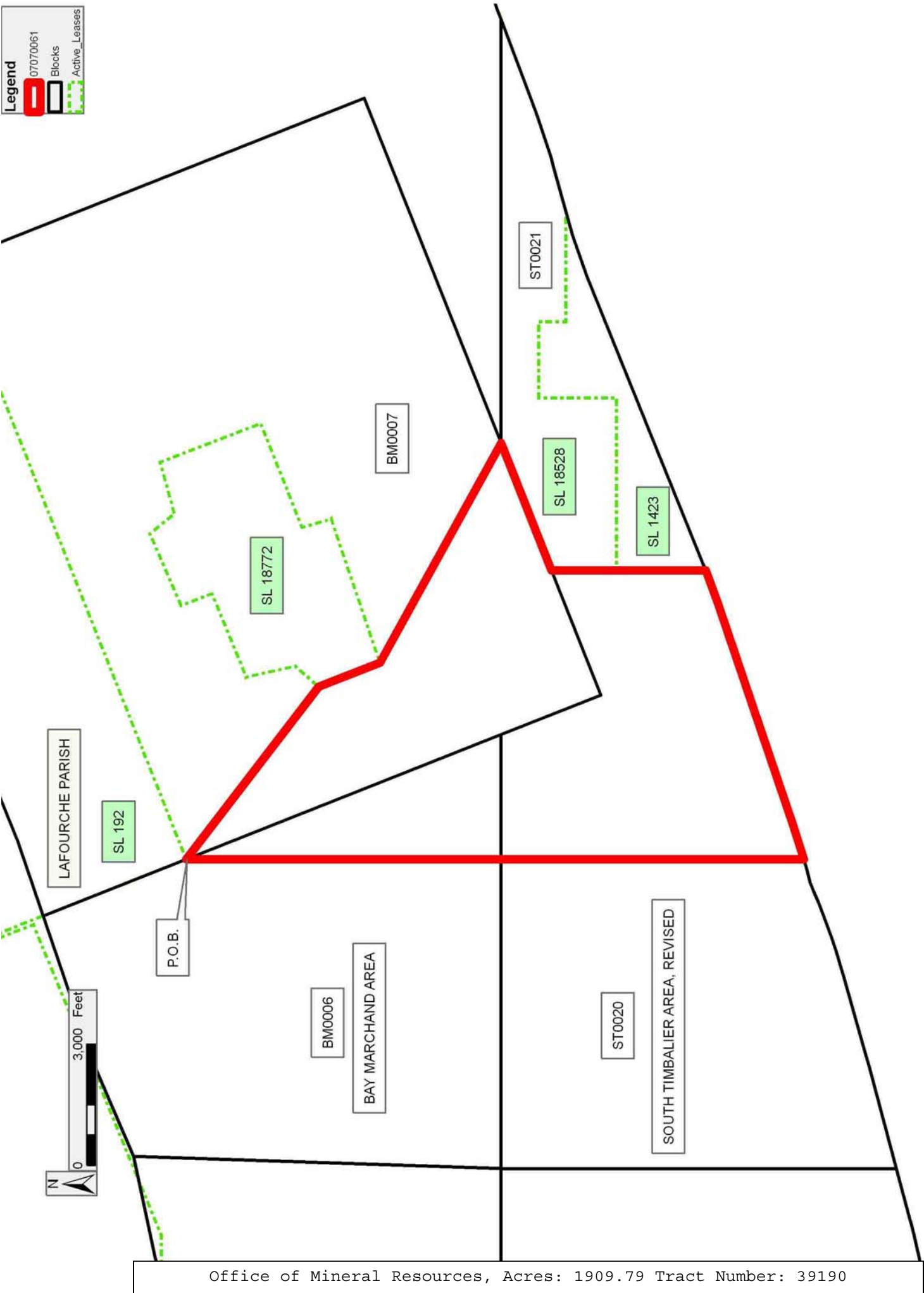
NOTE: The Department of Wildlife and Fisheries has designated certain areas in the coastal waters of the State of Louisiana as Oyster Seed Bed Areas. The exact location of those Seed Bed Areas must be obtained from the Department of Wildlife and Fisheries and any work done under a mineral lease from the State of Louisiana may necessarily be conducted in conformity with the rules and regulations promulgated by the said Department of Wildlife and Fisheries for Oyster Seed Bed Areas.

Applicant: CYPRESS ENERGY CORPORATION

Bidder	Cash Payment	Price/ Acre	Rental	Oil	Gas	Other

Legend

- 07070061
- Blocks
- Active_Leases



TRACT 39191 - Portion of Block 20, South Timbalier Area, Revised, Lafourche Parish, Louisiana

The beds and bottoms of all water bodies belonging to the State of Louisiana located in Block 20, South Timbalier Area, Revised, together with any present lands formed by accretion to the shoreline or islands formed therein, located in Lafourche Parish, Louisiana, owned by and not presently under mineral lease as of July 11, 2007, from the State of Louisiana, the geographical area of which is more fully described as follows: Beginning at the Northwest corner of Block 20, South Timbalier Area, Revised, having Coordinates of X = 2,319,854.14 and Y = 134,330.00; thence East 7,626.05 feet along the North line of said Block 20 to a point having Coordinates of X = 2,327,480.19 and Y = 134,330.00; thence South 7,472.02 feet to a point on the Three Mile Line, as decreed by the Supreme Court of the United States, as determined by a Special Master appointed therein, in litigation styled *United States v. State of Louisiana et al No. 9 Original*, in 1975, having Coordinates of X = 2,327,480.19 and Y = 126,857.98; thence along said Three Mile Line the following courses: Southwesterly along an arc to the right having a radius of 18,240.60 feet and a center at X = 2,322,466 and Y = 144,396 to a point having Coordinates of X = 2,326,959 and Y = 126,717; Southwesterly on a straight line to a point having Coordinates of X = 2,326,906 and Y = 126,704; Southwesterly along an arc to the right with a radius of 18,240.60 feet and a center at X = 2,319,608 and Y = 143,421 to a point having Coordinates of X = 2,324,588 and Y = 125,873 and Southwesterly on a straight line to a point having Coordinates of X = 2,322,643 and Y = 125,321; thence West 2,788.86 feet to a point having Coordinates of X = 2,319,854.14 and Y = 125,321.00; thence North 9,009.00 feet to the point of beginning, containing approximately **1,495.75 acres, LESS AND EXCEPT** that portion thereof, if any, lying seaward of the line three nautical miles from the coast line of Louisiana, as said three mile line has been decreed by the Supreme Court of the United States, as determined by a Special Master appointed therein, in litigation styled **United States v. State of Louisiana et al No. 9 Original**, in 1975, all as more particularly outlined on a plat in the Office of Mineral Resources, Department of Natural Resources. All bearings, distances and coordinates are based on the Louisiana Coordinate System of 1927, (South Zone).

NOTE: The above description of the Tract nominated for lease has been provided and corrected, where required, exclusively by the nomination party. Any mineral lease selected from this Tract and awarded by the Louisiana State Mineral Board shall be without warranty of any kind, either express, implied, or statutory, including, but not limited to, the implied warranties of merchantability and fitness for a particular purpose. Should the mineral lease awarded by the Louisiana State Mineral Board be subsequently modified, cancelled or abrogated due to the existence of conflicting leases, operating agreements, private claims or other future obligations or conditions which may affect all or any portion of the leased Tract, it shall not relieve the Lessee of the obligation to pay any bonus due thereon to the Louisiana State Mineral Board, nor shall

the Louisiana State Mineral Board be obligated to refund any consideration paid by the Lessor prior to such modification, cancellation, or abrogation, including, but not limited to, bonuses, rentals and royalties.

NOTE: The State of Louisiana does hereby reserve, and this lease shall be subject to, the imprescriptible right of surface use in the nature of a servitude in favor of the Department of Natural Resources, including its Offices and Commissions, for the sole purpose of implementing, constructing, servicing and maintaining approved coastal zone management and/or restoration projects. Utilization of any and all rights derived under this lease by the mineral lessee, its agents, successors or assigns, shall not interfere with nor hinder the reasonable surface use by the Department of Natural Resources, its Offices or Commissions, as herein above reserved.

Applicant: CYPRESS ENERGY CORPORATION

Bidder	Cash Payment	Price/ Acre	Rental	Oil	Gas	Other

