

**TRACT 38426 - Jefferson and Lafourche Parishes, Louisiana**

All of the lands now or formerly constituting the beds and bottoms of all water bodies of every nature and description the title of which vests in the State of Louisiana, together with all islands arising therein and other lands formed by accretion or by reliction, where allowed by law, excepting tax adjudicated lands, and not presently under mineral lease and cross hatched on July 12, 2006, situated in Jefferson and Lafourche Parishes, Louisiana, and more particularly described as follows: Beginning at a point having Coordinates of X = 2,369,570.00 and Y = 338,300.00; thence East 18,480.00 feet to a point having Coordinates of X = 2,388,050.00 and Y = 338,300.00; thence South 7,000.00 feet to a point having Coordinates of X = 2,388,050.00 and Y = 331,300.00; thence West approximately 14,045 feet to a point on the Eastern boundary of State Lease No. 2561, as amended; thence along the boundary of said State Lease No. 2561, as amended, the following courses: Northerly approximately 3,499 feet along the Eastern boundary of said State Lease No. 2561 to its Northeast corner and Westerly approximately 4,170 feet along the North boundary of said State Lease No. 2561 to a point having a Coordinate of X = 2,369,570.00; thence North approximately 3,592 feet to the point of beginning, containing approximately **1,488 acres**, all as more particularly outlined on a plat on file in the Office of Mineral Resources, Department of Natural Resources. All bearings, distances and coordinates are based on Louisiana Coordinate System of 1927, (North or South Zone), where applicable.

NOTE: The above description of the Tract nominated for lease has been provided and corrected, where required, exclusively by the nomination party. Any mineral lease selected from this Tract and awarded by the Louisiana State Mineral Board shall be without warranty of any kind, either express, implied, or statutory, including, but not limited to, the implied warranties of merchantability and fitness for a particular purpose. Should the mineral lease awarded by the Louisiana State Mineral Board be subsequently modified, cancelled or abrogated due to the existence of conflicting leases, operating agreements, private claims or other future obligations or conditions which may affect all or any portion of the leased Tract, it shall not relieve the Lessee of the obligation to pay any bonus due thereon to the Louisiana State Mineral Board, nor shall the Louisiana State Mineral Board be obligated to refund any consideration paid by the Lessor prior to such modification, cancellation, or abrogation, including, but not limited to, bonuses, rentals and royalties.

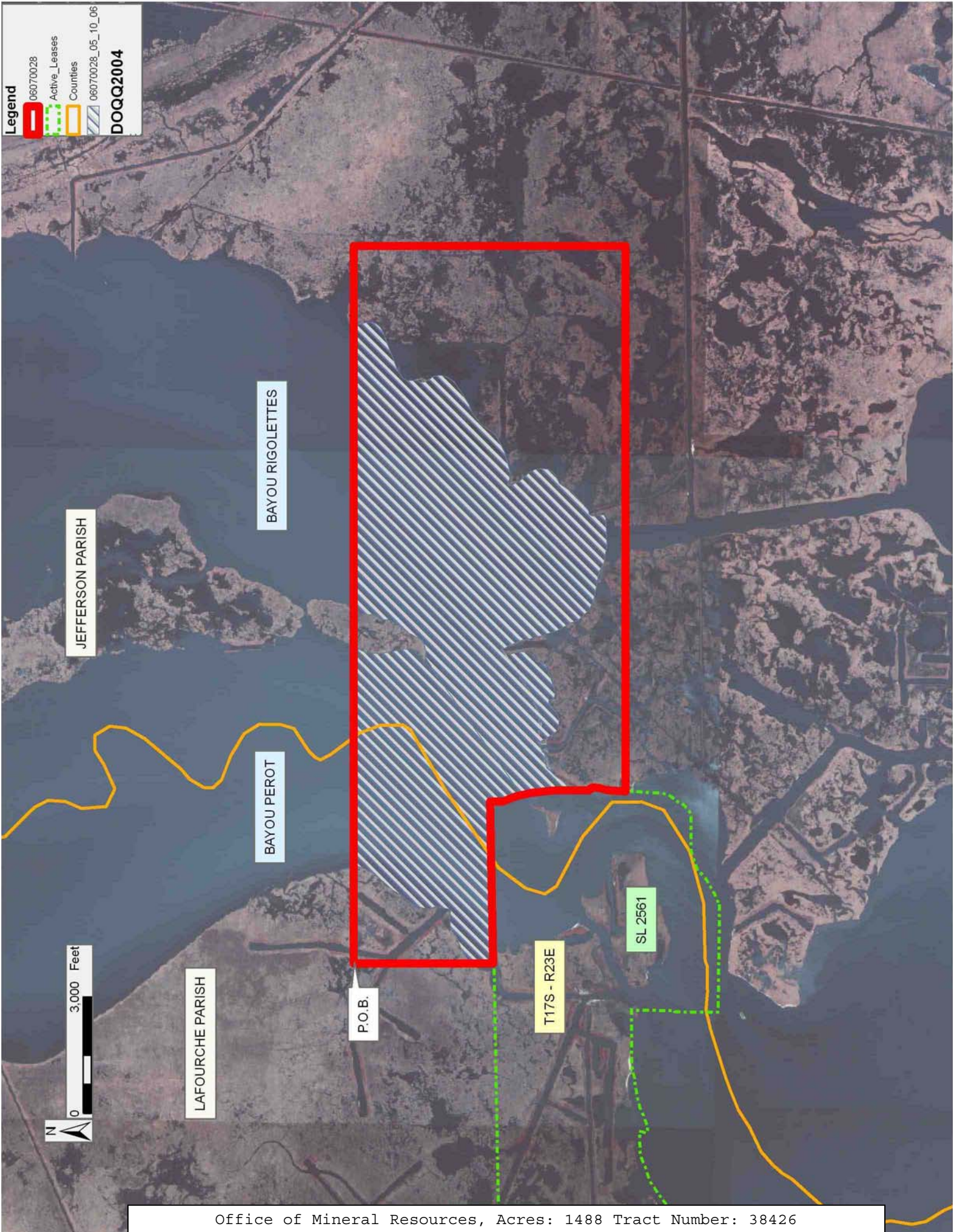
NOTE: The State of Louisiana does hereby reserve, and this lease shall be subject to, the imprescriptible right of surface use in the nature of a servitude in favor of the Department of Natural Resources, including its Offices and Commissions, for the sole purpose of implementing, constructing, servicing and maintaining approved coastal zone management and/or restoration projects. Utilization of any and all rights derived under this lease by the mineral lessee, its agents, successors or assigns, shall not interfere with nor hinder the reasonable surface use by the

Department of Natural Resources, its Offices or Commissions, as herein above reserved.

NOTE: The Department of Wildlife and Fisheries has designated certain areas in the coastal waters of the State of Louisiana as Oyster Seed Bed Areas. The exact location of those Seed Bed Areas must be obtained from the Department of Wildlife and Fisheries and any work done under a mineral lease from the State of Louisiana may necessarily be conducted in conformity with the rules and regulations promulgated by the said Department of Wildlife and Fisheries for Oyster Seed Bed Areas.

Applicant: COUBA PROPERTIES

Bidder	Cash Payment	Price/ Acre	Rental	Oil	Gas	Other





**TRACT 38427 - St. Mary and Terrebonne Parishes, Louisiana**

All of the lands now or formerly constituting the beds and bottoms of all water bodies of every nature and description the title of which vests in the State of Louisiana, together with all islands arising therein and other lands formed by accretion or by reliction, where allowed by law, excepting tax adjudicated lands, and not presently under mineral lease and cross hatched on July 12, 2006, situated in St. Mary and Terrebonne Parishes, Louisiana, and more particularly described as follows: Beginning at a point on a Southern boundary of State Lease No. 16361, as amended, having Coordinates of X = 2,026,597.18 and Y = 314,459.88; thence along the boundary of said State Lease No. 16361, as amended, the following courses and distances: along a curve to the left having a radius of 679.23 feet and a chord bearing of North 60 degrees 57 minutes 22 seconds East 621.55 feet to a point having Coordinates of X = 2,027,140.57 and Y = 314,761.63; along a curve to the left having a radius of 29,845.15 feet and a chord bearing of North 29 degrees 45 minutes 55 seconds East 971.36 feet to a point having Coordinates of X = 2,027,622.80 and Y = 315,604.84; and North 960.16 feet to a point on the Southern boundary of State Lease No. 15652, as amended, having Coordinates of X = 2,027,622.80 and Y = 316,565.00; thence along the boundary of said State Lease No. 15652, as amended, the following courses and distances: East 361.96 feet to a point having Coordinates of X = 2,027,984.76 and Y = 316,565.00; along a curve to the left having a radius of 1,940.31 feet and a chord bearing of North 00 degrees 53 minutes 46 seconds East 384.25 feet to a point having Coordinates of X = 2,027,990.77 and Y = 316,949.20; along a curve to the left having a radius of 9,058.01 feet and a chord bearing of North 44 degrees 05 minutes 17 seconds East 20.88 feet to a point having Coordinates of X = 2,028,005.30 and Y = 316,964.20; along a curve to the left having a radius of 336.13 feet and a chord bearing of North 27 degrees 03 minutes 34 seconds East 279.25 feet to a point having Coordinates of X = 2,028,132.33 and Y = 317,212.88; along a curve to the left having a radius of 1,308.87 feet and a chord bearing of North 06 degrees 34 minutes 02 seconds West 631.30 feet to a point having Coordinates of X = 2,028,060.13 and Y = 317,840.04; along a curve to the left having a radius of 5,963.44 feet and a chord bearing of North 31 degrees 56 minutes 28 seconds West 1383.15 feet to a point having Coordinates of X = 2,027,328.38 and Y = 319,013.77; along a curve to the left having a radius of 1,200.67 feet and a chord bearing of North 48 degrees 24 minutes 31 seconds West 530.78 feet to a point having Coordinates of X = 2,026,931.41 and Y = 319,366.11; and along a curve to the left having a radius of 232.59 feet and a chord bearing of North 84 degrees 05 minutes 12 seconds West 196.47 feet to a point having Coordinates of X = 2,026,735.99 and Y = 319,386.35; thence North approximately 3,255 feet to a point on the Southern boundary of State Lease No. 1337, as amended, to a point having a Coordinate of X = 2,026,735.99; thence Easterly approximately 5,144 feet along said Southern boundary of said State Lease No. 1337, as amended, to its Southeast corner having Coordinates of X = 2,031,880.00 and Y = 322,641.22; thence North 00 degrees 02 minutes 43 seconds West 3,668.29 feet along the Eastern

boundary of said State Lease No. 1337, as amended, to a point having Coordinates of X = 2,031,877.10 and Y = 326,309.51; thence East 10,560.08 feet to point having Coordinates of X = 2,042,437.18 and Y = 326,309.51; thence South 18,480.00 feet to point having Coordinates of X = 2,042,437.18 and Y = 307,829.51; thence West 15,840.00 feet to point having Coordinates of X = 2,026,597.18 and Y = 307,829.51; thence North 6,630.37 feet to the point of beginning, containing approximately **798 acres**, all as more particularly outlined on a plat on file in the Office of Mineral Resources, Department of Natural Resources. All bearings, distances and coordinates are based on Louisiana Coordinate System of 1927, (North or South Zone), where applicable.

NOTE: The above description of the Tract nominated for lease has been provided and corrected, where required, exclusively by the nomination party. Any mineral lease selected from this Tract and awarded by the Louisiana State Mineral Board shall be without warranty of any kind, either express, implied, or statutory, including, but not limited to, the implied warranties of merchantability and fitness for a particular purpose. Should the mineral lease awarded by the Louisiana State Mineral Board be subsequently modified, cancelled or abrogated due to the existence of conflicting leases, operating agreements, private claims or other future obligations or conditions which may affect all or any portion of the leased Tract, it shall not relieve the Lessee of the obligation to pay any bonus due thereon to the Louisiana State Mineral Board, nor shall the Louisiana State Mineral Board be obligated to refund any consideration paid by the Lessor prior to such modification, cancellation, or abrogation, including, but not limited to, bonuses, rentals and royalties.

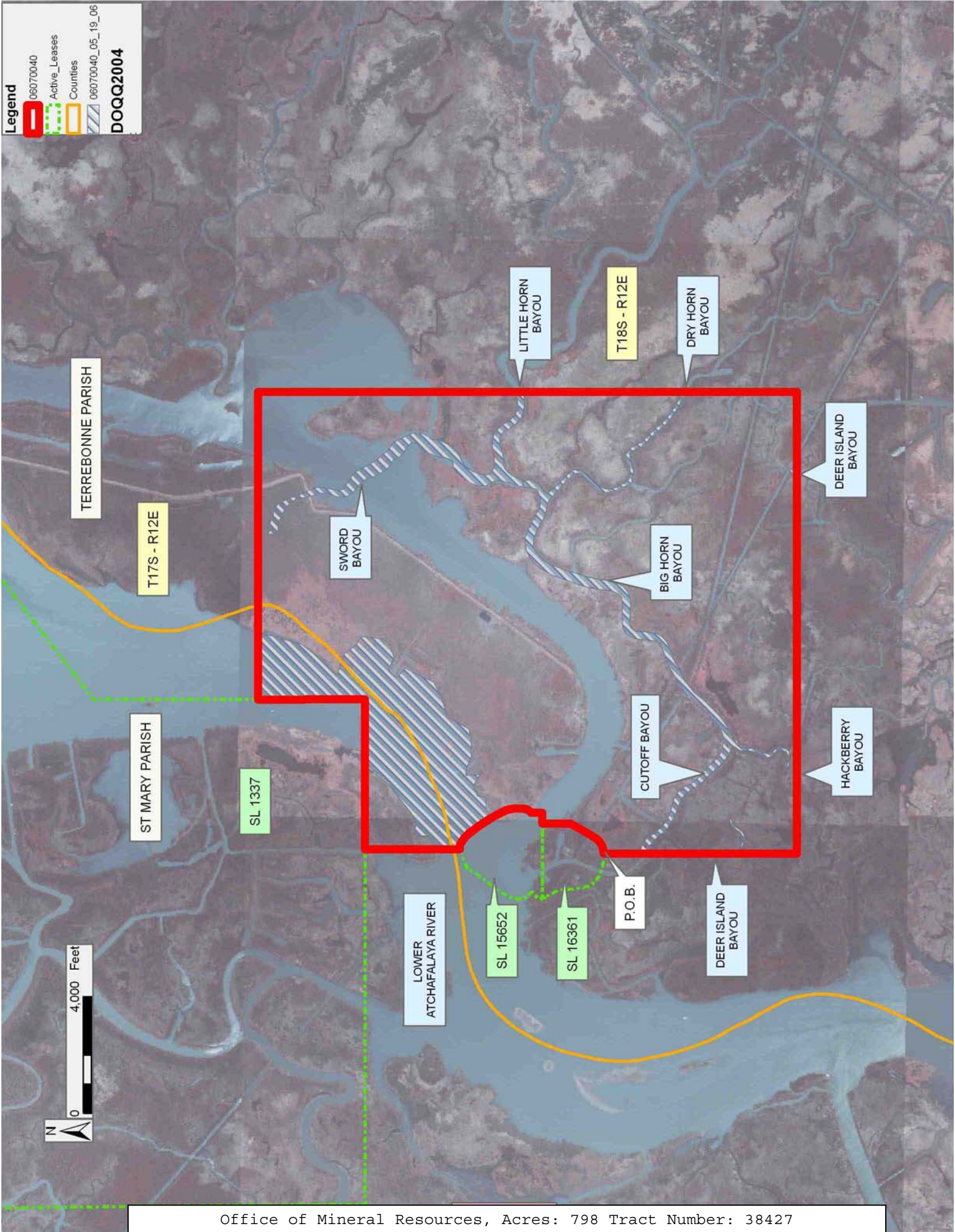
NOTE: The State of Louisiana does hereby reserve, and this lease shall be subject to, the imprescriptible right of surface use in the nature of a servitude in favor of the Department of Natural Resources, including its Offices and Commissions, for the sole purpose of implementing, constructing, servicing and maintaining approved coastal zone management and/or restoration projects. Utilization of any and all rights derived under this lease by the mineral lessee, its agents, successors or assigns, shall not interfere with nor hinder the reasonable surface use by the Department of Natural Resources, its Offices or Commissions, as herein above reserved.

Applicant: ROBERT A. SCHROEDER, INC.

Bidder	Cash Payment	Price/ Acre	Rental	Oil	Gas	Other

**Legend**

- 06070040
- Active\_Leases
- Counties
- 06070040\_05\_19\_06
- DOQQ2004**



**TRACT 38428 - St. Mary and Terrebonne Parishes, Louisiana**

All of the lands now or formerly constituting the beds and bottoms of all water bodies of every nature and description the title of which vests in the State of Louisiana, together with all islands arising therein and other lands formed by accretion or by reliction, where allowed by law, excepting tax adjudicated lands, and not presently under mineral lease and cross hatched on July 12, 2006, situated in St. Mary and Terrebonne Parishes, Louisiana, and more particularly described as follows: Beginning at a point on a Southern boundary of State Lease No. 16361, as amended, having Coordinates of X = 2,026,597.18 and Y = 314,459.88; thence South 6,630.37 feet to a point having Coordinates of X = 2,026,597.18 and Y = 307,829.51; thence West 12,091.52 feet to a point having Coordinates of X = 2,014,505.66 and Y = 307,829.51; thence North 14,811.71 to a point having Coordinates of X = 2,014,505.66 and Y = 322,641.22; thence Easterly approximately 61 feet to a point on the boundary of State Lease No. 1337, as amended; the Easterly approximately 12,169 feet along the boundary of said State Lease No. 1337 to a point having a Coordinate of X = 2,026,735.99; thence South approximately 3,255 feet to a point on a Northern boundary of State Lease No. 15652, as amended, having Coordinates of X = 2,026,735.99 and Y = 319,386.35; thence along the boundary of said State Lease No. 15652 the following courses and distances: along a curve to the right having a radius of 215,229.64 feet and a chord bearing of South 70 degrees 51 minutes 42 seconds West 518.29 feet to a point having Coordinates of X = 2,026,246.35 and Y = 319,216.43; along a curve to the left having a radius of 431.21 feet and a chord bearing of South 51 degrees 48 minutes 12 seconds West 280.61 feet to a point having Coordinates of X = 2,026,025.82 and Y = 319,042.91; along a curve to the right having a radius of 4,976.99 feet and a chord bearing of South 35 degrees 28 minutes 17 seconds West 815.29 feet to a point having Coordinates of X = 2,025,552.71 and Y = 318,378.93; along a curve to the left having a radius of 2,663.16 feet and a chord bearing of South 32 degrees 38 minutes 16 seconds West 815.30 feet to a point having Coordinates of X = 2,025,113.00 and Y = 317,692.37; along a curve to the left having a radius of 576.75 feet and a chord bearing of South 06 degrees 25 minutes 55 seconds East 676.73 feet to a point having Coordinates of X = 2,025,188.81 and Y = 317,019.90; along a curve to the left having a radius of 30,819.19 feet and a chord bearing of South 40 degrees 18 minutes 49 seconds East 131.12 feet to a point having Coordinates of X = 2,025,273.64 and Y = 316,919.92; along a curve to the left having a radius of 6,742.41 feet and a chord bearing of South 49 degrees 40 minutes 58 seconds West 93.98 feet to a point having Coordinates of X = 2,025,201.99 and Y = 316,859.12; and along a curve to the left having a radius of 358.27 feet and a chord bearing of South 22 degrees 56 minutes 14 seconds West 319.37 feet to a point on a Western boundary of said State Lease No. 16361 having Coordinates of X = 2,025,077.52 and Y = 316,565.00; thence along the boundary of said State Lease No. 16361 the following courses and distances: along a curve to the left having a radius of 358.25 feet and a chord bearing of South 11 degrees 32 minutes 03 seconds East 99.72 feet to a point having



Coordinates of X = 2,025,097.46 and Y = 316,467.29; along a curve to the right having a radius of 2,531.61 feet and a chord bearing of South 25 degrees 52 minutes 09 seconds East 581.30 feet to a point having Coordinates of X = 2,025,351.09 and Y = 315,944.24; along a curve to the left having a radius of 3,835.00 feet and a chord bearing of South 07 degrees 06 minutes 29 seconds East 929.51 feet to a point having Coordinates of X = 2,025,466.11 and Y = 315,021.87; along a curve to the left having a radius of 747.90 feet and a chord bearing of South 44 degrees 52 minutes 32 seconds East 615.49 feet to a point having Coordinates of X = 2,025,900.38 and Y = 314,585.71; and along a curve to the left having a radius of 1,608.05 feet and a chord bearing of South 79 degrees 45 minutes 49 seconds East 708.07 feet to the point of beginning, containing approximately **2,436 acres**, all as more particularly outlined on a plat on file in the Office of Mineral Resources, Department of Natural Resources. All bearings, distances and coordinates are based on Louisiana Coordinate System of 1927, (North or South Zone), where applicable.

NOTE: The above description of the Tract nominated for lease has been provided and corrected, where required, exclusively by the nomination party. Any mineral lease selected from this Tract and awarded by the Louisiana State Mineral Board shall be without warranty of any kind, either express, implied, or statutory, including, but not limited to, the implied warranties of merchantability and fitness for a particular purpose. Should the mineral lease awarded by the Louisiana State Mineral Board be subsequently modified, cancelled or abrogated due to the existence of conflicting leases, operating agreements, private claims or other future obligations or conditions which may affect all or any portion of the leased Tract, it shall not relieve the Lessee of the obligation to pay any bonus due thereon to the Louisiana State Mineral Board, nor shall the Louisiana State Mineral Board be obligated to refund any consideration paid by the Lessor prior to such modification, cancellation, or abrogation, including, but not limited to, bonuses, rentals and royalties.

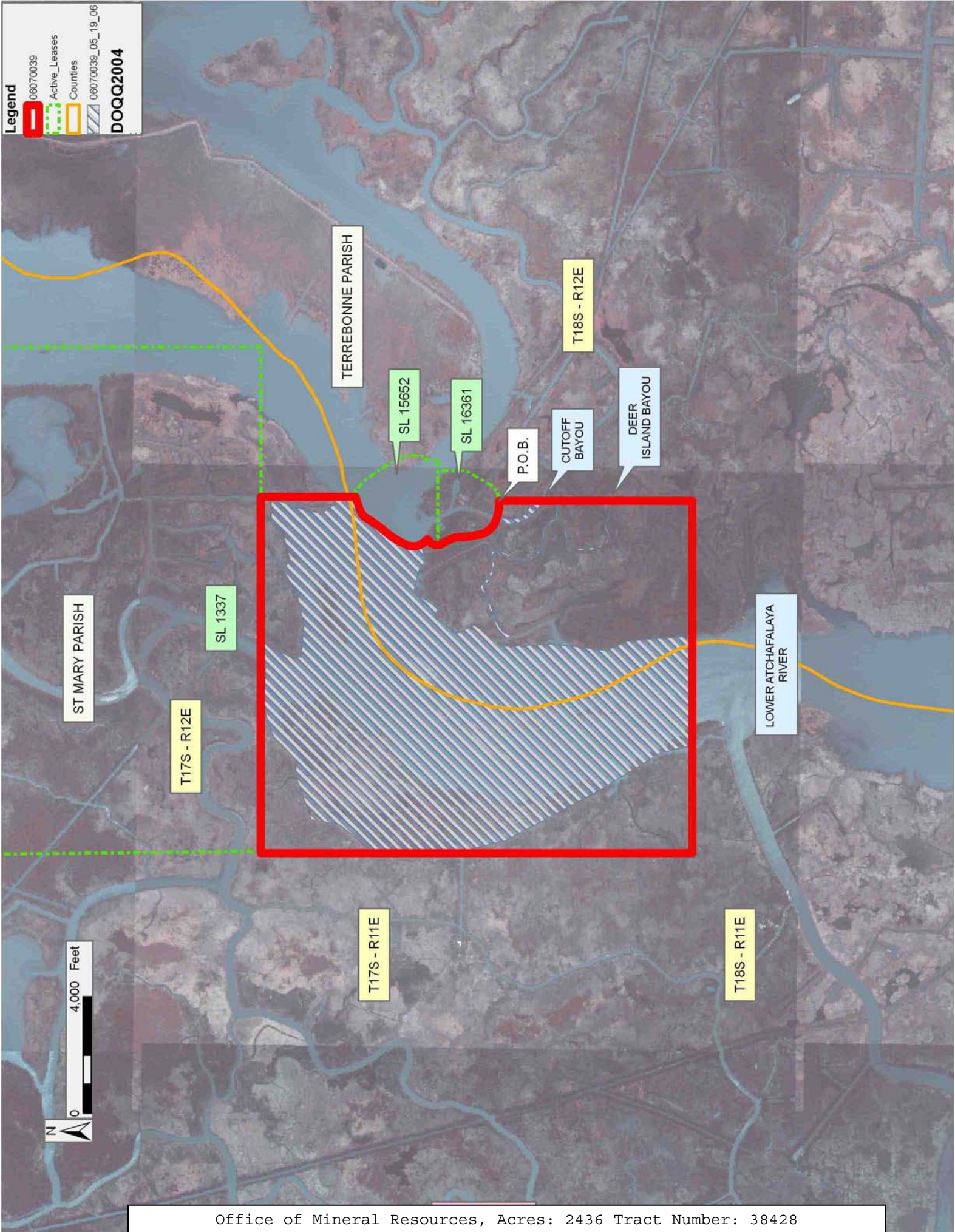
NOTE: The State of Louisiana does hereby reserve, and this lease shall be subject to, the imprescriptible right of surface use in the nature of a servitude in favor of the Department of Natural Resources, including its Offices and Commissions, for the sole purpose of implementing, constructing, servicing and maintaining approved coastal zone management and/or restoration projects. Utilization of any and all rights derived under this lease by the mineral lessee, its agents, successors or assigns, shall not interfere with nor hinder the reasonable surface use by the Department of Natural Resources, its Offices or Commissions, as herein above reserved.

Applicant: ROBERT A. SCHROEDER, INC.

Bidder	Cash Payment	Price/ Acre	Rental	Oil	Gas	Other

**Legend**

- 06070039
- Active\_Leases
- Counties
- 06070039\_05\_19\_06
- DOQQ2004**



**TRACT 38429 - Jefferson and Lafourche Parishes, Louisiana**

All of the lands now or formerly constituting the beds and bottoms of all water bodies of every nature and description the title of which vests in the State of Louisiana, together with all islands arising therein and other lands formed by accretion or by reliction, where allowed by law, excepting tax adjudicated lands, and not presently under mineral lease and cross hatched on July 12, 2006, situated in Jefferson and Lafourche Parishes, Louisiana, and more particularly described as follows: Beginning at the Northeast corner of State Lease No. 17780 having Coordinates of X = 2,389,869.20 and Y = 298,605.10; thence South 89 degrees 25 minutes 23 seconds West 5,033.57 feet along the North boundary of said State Lease No. 17780 to a point having Coordinates of X = 2,384,835.88 and Y = 298,554.41; thence North 4,311.12 feet to a point having Coordinates of X = 2,384,835.88 and Y = 302,865.53; thence East 7,765.30 feet to a point having Coordinates of X = 2,392,601.18 and Y = 302,865.53; thence South 42 degrees 18 minutes 51 seconds East 4,249.44 feet to a point on the West boundary of State Lease No. 18143 having Coordinates of X = 2,395,461.88 and Y = 299,723.21; thence along the boundary of said State Lease No. 18143 the following courses and distances: South 35 degrees 09 minutes 12 seconds West 1,352.01 feet to a point having Coordinates of X = 2,394,683.44 and Y = 298,617.78 and East 1,603.56 feet to a point having Coordinates of X = 2,396,287.00 and Y = 298,617.78; thence South 9,128.78 feet to a point having Coordinates of X = 2,396,287.00 and Y = 289,489.00; thence West 2,300.00 feet to the Southeast corner of State Lease No. 18405 having Coordinates of X = 2,393,987.00 and Y = 289,489.00; thence along the boundary of said State Lease No. 18405 the following courses and distances: North 2,168.00 feet to a point having Coordinates of X = 2,393,987.00 and Y = 291,657.00, West 4,543.00 feet to a point having Coordinates of X = 2,389,444.00 and Y = 291,657.00 and South 2,168.00 feet to its Southwest corner having Coordinates of X = 2,389,444.00 and Y = 289,489.00; thence West 5,449.90 feet to a point having Coordinates of X = 2,383,994.10 and Y = 289,489.00; thence North 03 degrees 57 minutes 26 seconds East 1,334.18 feet to the Southeast corner of State Lease No. 18970 having Coordinates of X = 2,384,086.18 and Y = 290,820.00; thence along the boundary of said State Lease No. 18970 the following courses and distances: North 01 degree 41 minutes 38 seconds West 2,670.45 feet to a point having Coordinates of X = 2,384,007.24 and Y = 293,489.28 and North 02 degrees 11 minutes 54 seconds West 342.57 feet to its Easternmost Northeast corner also being the Southeast corner of State Lease No. 18146 having Coordinates of X = 2,383,994.10 and Y = 293,831.60; thence North 1,417.00 feet along the East boundary of said State Lease No. 18146 to the Southwest corner of said State Lease No. 17780 having Coordinates of X = 2,383,994.10 and Y = 295,248.61; thence along the boundary of said State Lease No. 17780 the following courses and distances: East 5,900.10 feet to a point having Coordinates of X = 2,389,894.20 and Y = 295,248.61 and North 00 degrees 25 minutes 36 seconds West 3,356.58 feet to the point of beginning, containing approximately **2,366 acres**, all as more particularly outlined on a plat on file in the Office of Mineral Resources, Department of Natural Resources. All bearings, distances and coordinates are based on



Louisiana Coordinate System of 1927, (North or South Zone), where applicable.

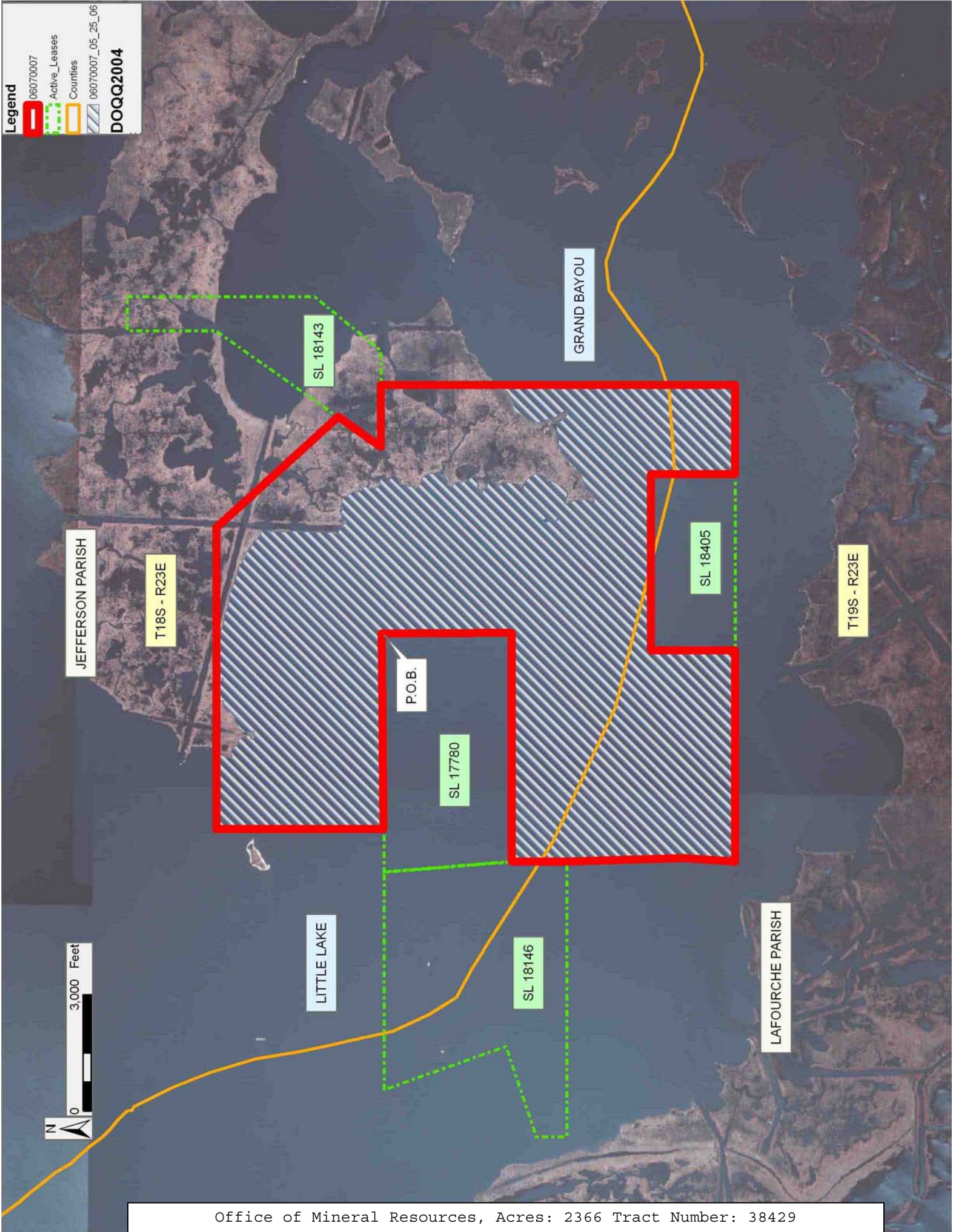
NOTE: The above description of the Tract nominated for lease has been provided and corrected, where required, exclusively by the nomination party. Any mineral lease selected from this Tract and awarded by the Louisiana State Mineral Board shall be without warranty of any kind, either express, implied, or statutory, including, but not limited to, the implied warranties of merchantability and fitness for a particular purpose. Should the mineral lease awarded by the Louisiana State Mineral Board be subsequently modified, cancelled or abrogated due to the existence of conflicting leases, operating agreements, private claims or other future obligations or conditions which may affect all or any portion of the leased Tract, it shall not relieve the Lessee of the obligation to pay any bonus due thereon to the Louisiana State Mineral Board, nor shall the Louisiana State Mineral Board be obligated to refund any consideration paid by the Lessor prior to such modification, cancellation, or abrogation, including, but not limited to, bonuses, rentals and royalties.

NOTE: The State of Louisiana does hereby reserve, and this lease shall be subject to, the imprescriptible right of surface use in the nature of a servitude in favor of the Department of Natural Resources, including its Offices and Commissions, for the sole purpose of implementing, constructing, servicing and maintaining approved coastal zone management and/or restoration projects. Utilization of any and all rights derived under this lease by the mineral lessee, its agents, successors or assigns, shall not interfere with nor hinder the reasonable surface use by the Department of Natural Resources, its Offices or Commissions, as herein above reserved.

NOTE: The Department of Wildlife and Fisheries has designated certain areas in the coastal waters of the State of Louisiana as Oyster Seed Bed Areas. The exact location of those Seed Bed Areas must be obtained from the Department of Wildlife and Fisheries and any work done under a mineral lease from the State of Louisiana may necessarily be conducted in conformity with the rules and regulations promulgated by the said Department of Wildlife and Fisheries for Oyster Seed Bed Areas.

Bidder	Cash Payment	Price/ Acre	Rental	Oil	Gas	Other

Applicant: LESLIE M. COOPER



**TRACT 38430 - Jefferson Parish, Louisiana**

All of the lands now or formerly constituting the beds and bottoms of all water bodies of every nature and description the title of which vests in the State of Louisiana, together with all islands arising therein and other lands formed by accretion or by reliction, where allowed by law, excepting tax adjudicated lands, and not presently under mineral lease and cross hatched on July 12, 2006, situated in Jefferson Parish, Louisiana, and more particularly described as follows: Beginning at a point having Coordinates of X = 2,414,949.62 and Y = 290,813.83; thence North 9,494.24 feet to the Southwest corner of State Lease No. 4192 having Coordinates of X = 2,414,949.62 and Y = 300,308.07; thence along the boundary of said State Lease No. 4192 the following courses and distances: East 2,640.00 feet to a point having Coordinates of X = 2,417,589.62 and Y = 300,308.07, North 600 feet to a point having Coordinates of X = 2,417,589.62 and Y = 300,908.07, East 1,000.00 feet to a point having Coordinates of X = 2,418,589.62 and Y = 300,908.07, North 250.00 feet to a point having Coordinates of X = 2,418,589.62 and Y = 301,158.07 and East 3,362.59 feet to a point having Coordinates of X = 2,421,952.21 and Y = 301,158.07; thence South 1,158.07 feet to a point having Coordinates of 2,421,952.21 and Y = 300,000.00; thence East 4,047.79 feet to a point having Coordinates of 2,426,000.00 and Y = 300,000.00; thence South 00 degrees 01 minute 11 seconds West 9,186.17 feet to a point having Coordinates of X = 2,425,996.84 and Y = 290,813.83; thence West 11,047.22 feet to the point of beginning, containing approximately **2,030 acres**, all as more particularly outlined on a plat on file in the Office of Mineral Resources, Department of Natural Resources. All bearings, distances and coordinates are based on Louisiana Coordinate System of 1927, (North or South Zone), where applicable.

NOTE: The above description of the Tract nominated for lease has been provided and corrected, where required, exclusively by the nomination party. Any mineral lease selected from this Tract and awarded by the Louisiana State Mineral Board shall be without warranty of any kind, either express, implied, or statutory, including, but not limited to, the implied warranties of merchantability and fitness for a particular purpose. Should the mineral lease awarded by the Louisiana State Mineral Board be subsequently modified, cancelled or abrogated due to the existence of conflicting leases, operating agreements, private claims or other future obligations or conditions which may affect all or any portion of the leased Tract, it shall not relieve the Lessee of the obligation to pay any bonus due thereon to the Louisiana State Mineral Board, nor shall the Louisiana State Mineral Board be obligated to refund any consideration paid by the Lessor prior to such modification, cancellation, or abrogation, including, but not limited to, bonuses, rentals and royalties.

NOTE: The State of Louisiana does hereby reserve, and this lease shall be subject to, the imprescriptible right of surface use in the nature of a servitude in favor of the Department of Natural Resources, including its Offices and Commissions, for the sole purpose of implementing,

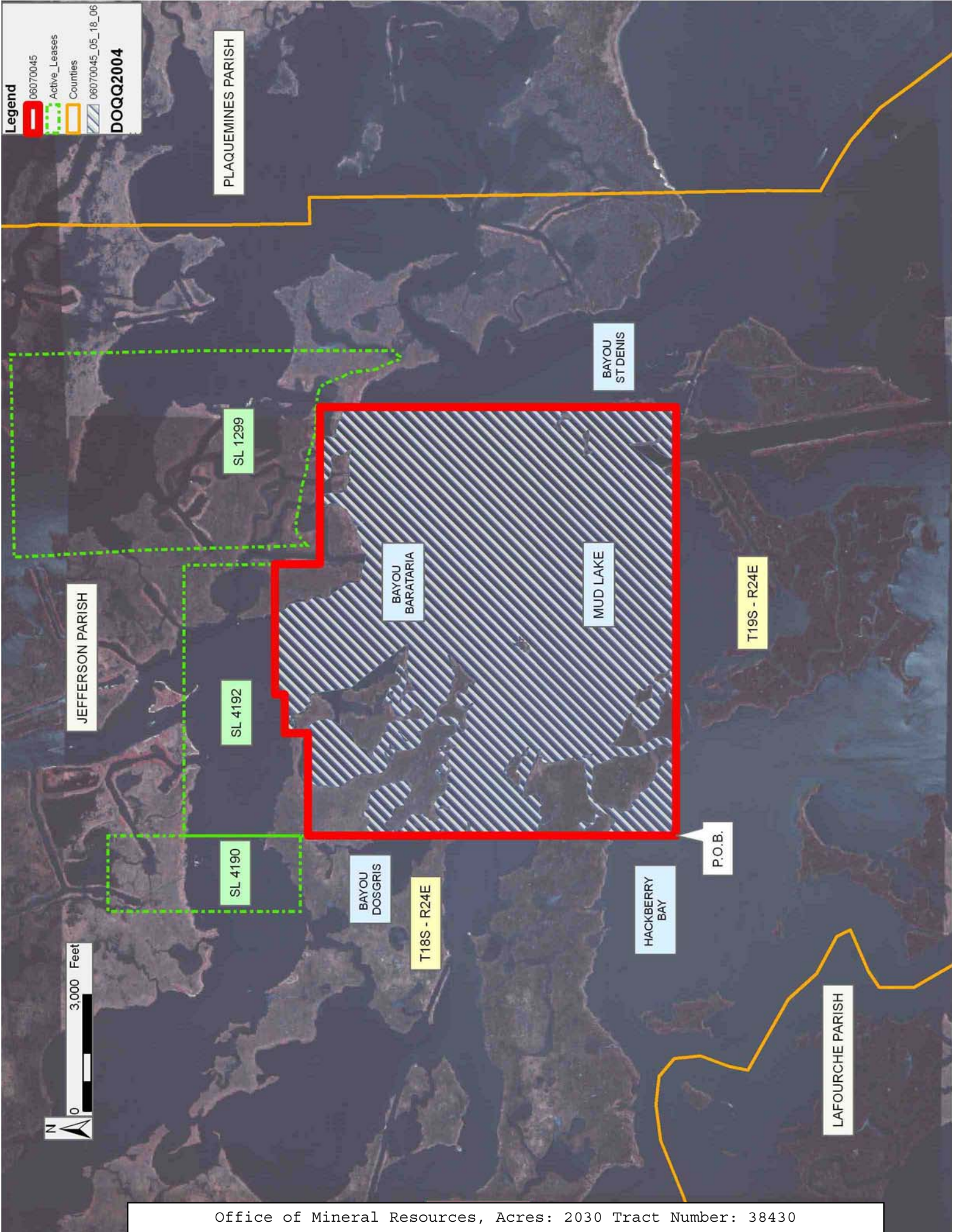


constructing, servicing and maintaining approved coastal zone management and/or restoration projects. Utilization of any and all rights derived under this lease by the mineral lessee, its agents, successors or assigns, shall not interfere with nor hinder the reasonable surface use by the Department of Natural Resources, its Offices or Commissions, as herein above reserved.

NOTE: The Department of Wildlife and Fisheries has designated certain areas in the coastal waters of the State of Louisiana as Oyster Seed Bed Areas. The exact location of those Seed Bed Areas must be obtained from the Department of Wildlife and Fisheries and any work done under a mineral lease from the State of Louisiana may necessarily be conducted in conformity with the rules and regulations promulgated by the said Department of Wildlife and Fisheries for Oyster Seed Bed Areas.

Applicant: ACADIAN LAND SERVICES, L.L.C.

Bidder	Cash Payment	Price/ Acre	Rental	Oil	Gas	Other



**TRACT 38431 - Jefferson and Lafourche Parishes, Louisiana**

All of the lands now or formerly constituting the beds and bottoms of all water bodies of every nature and description the title of which vests in the State of Louisiana, together with all islands arising therein and other lands formed by accretion or by reliction, where allowed by law, excepting tax adjudicated lands, and not presently under mineral lease and cross hatched on July 12, 2006, situated in Jefferson and Lafourche Parishes, Louisiana, and more particularly described as follows: Beginning at a point having Coordinates of X = 2,403,862.54 and Y = 300,508.07; thence East 9,137.08 feet to the Southwest corner of State Lease No. 4190 having Coordinates of X = 2,412,999.62 and Y = 300,508.07; thence East 1,950.00 feet along the South boundary of said State Lease No. 4190 to its Southeast corner, also being a point on the West boundary of State Lease No. 4192 having Coordinates of X = 2,414,949.62 and Y = 300,508.07; thence South 200.00 feet along the West boundary of said State Lease No. 4192 to its Southwest corner having Coordinates of X = 2,414,949.62 and Y = 300,308.07; thence South 9,494.24 feet to a point having Coordinates of X = 2,414,949.62 and Y = 290,813.83; thence West 11,087.08 feet to a point having Coordinates of X = 2,403,862.54 and Y = 290,813.83; thence North 9,694.24 feet to the point of beginning, containing approximately **1,332 acres**, all as more particularly outlined on a plat on file in the Office of Mineral Resources, Department of Natural Resources. All bearings, distances and coordinates are based on Louisiana Coordinate System of 1927, (North or South Zone), where applicable.

NOTE: The above description of the Tract nominated for lease has been provided and corrected, where required, exclusively by the nomination party. Any mineral lease selected from this Tract and awarded by the Louisiana State Mineral Board shall be without warranty of any kind, either express, implied, or statutory, including, but not limited to, the implied warranties of merchantability and fitness for a particular purpose. Should the mineral lease awarded by the Louisiana State Mineral Board be subsequently modified, cancelled or abrogated due to the existence of conflicting leases, operating agreements, private claims or other future obligations or conditions which may affect all or any portion of the leased Tract, it shall not relieve the Lessee of the obligation to pay any bonus due thereon to the Louisiana State Mineral Board, nor shall the Louisiana State Mineral Board be obligated to refund any consideration paid by the Lessor prior to such modification, cancellation, or abrogation, including, but not limited to, bonuses, rentals and royalties.

NOTE: The State of Louisiana does hereby reserve, and this lease shall be subject to, the imprescriptible right of surface use in the nature of a servitude in favor of the Department of Natural Resources, including its Offices and Commissions, for the sole purpose of implementing, constructing, servicing and maintaining approved coastal zone management and/or restoration projects. Utilization of any and all rights derived under this lease by the mineral lessee, its agents, successors or assigns, shall not interfere with nor hinder the reasonable surface use by the

Department of Natural Resources, its Offices or Commissions, as herein above reserved.

NOTE: The Department of Wildlife and Fisheries has designated certain areas in the coastal waters of the State of Louisiana as Oyster Seed Bed Areas. The exact location of those Seed Bed Areas must be obtained from the Department of Wildlife and Fisheries and any work done under a mineral lease from the State of Louisiana may necessarily be conducted in conformity with the rules and regulations promulgated by the said Department of Wildlife and Fisheries for Oyster Seed Bed Areas.

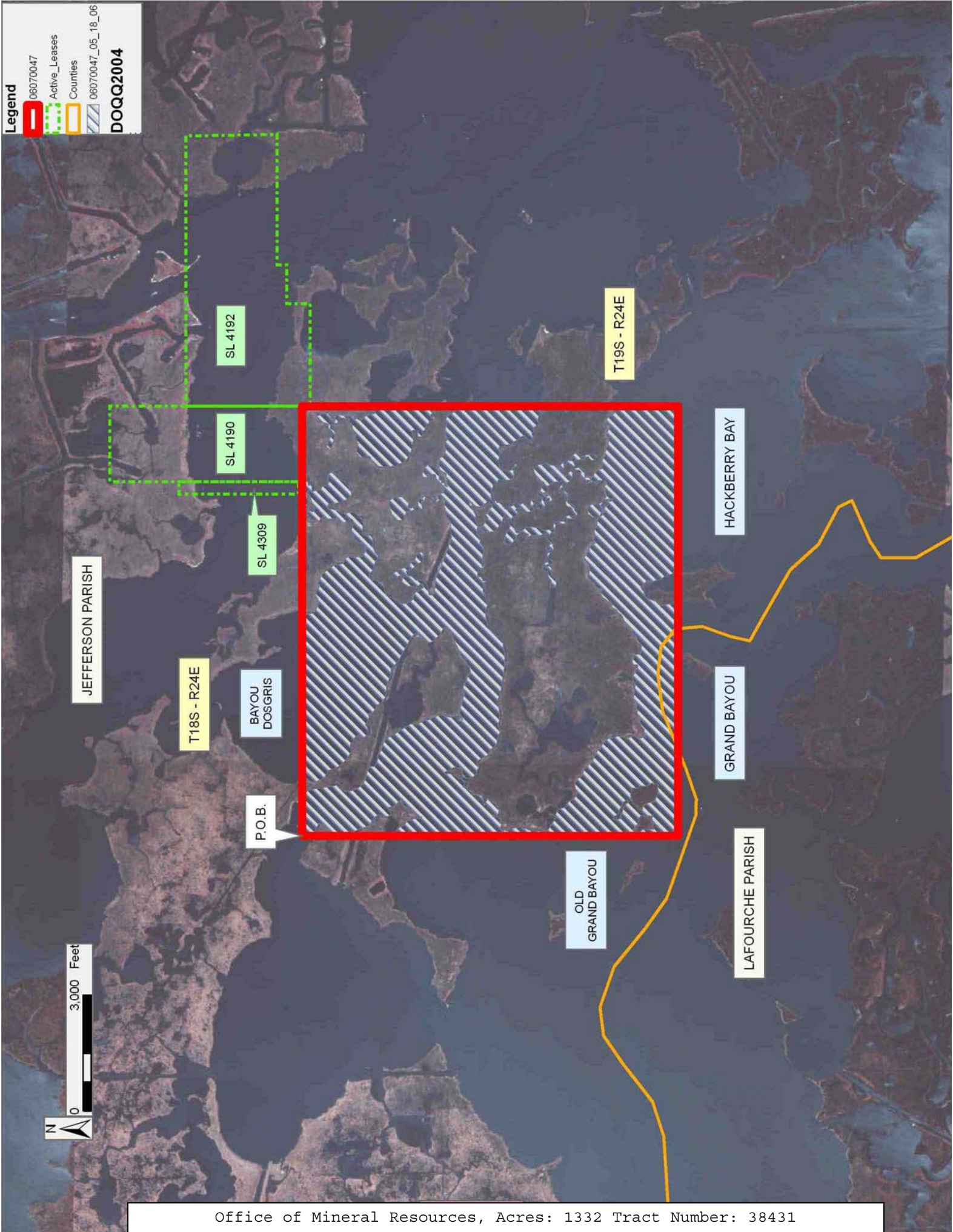
Applicant: ACADIAN LAND SERVICES, L.L.C.

Bidder	Cash Payment	Price/ Acre	Rental	Oil	Gas	Other



**Legend**

- 06070047
- Active\_Leases
- Counties
- 06070047\_05\_18\_06
- DOQQ2004**



**TRACT 38432 - Jefferson Parish, Louisiana**

All of the lands now or formerly constituting the beds and bottoms of all water bodies of every nature and description the title of which vests in the State of Louisiana, together with all islands arising therein and other lands formed by accretion or by reliction, where allowed by law, excepting tax adjudicated lands, and not presently under mineral lease and cross hatched on July 12, 2006, situated in Jefferson Parish, Louisiana, and more particularly described as follows: Beginning at a point having Coordinates of X = 2,413,026.38 and Y = 290,813.83; thence East 13,956.62 feet to a point having Coordinates of X = 2,426,983.00 and Y = 290,813.83; thence South 5,416.68 feet to the Northwest corner of State Lease No. 18162 having Coordinates of X = 2,426,983.00 and Y = 285,397.15; thence South 48 degrees 11 minutes 10 seconds West 5,332.13 feet along the boundary of said State Lease No. 18162 to its Southwest corner, also being the Northwest corner of State Lease No. 15822 having Coordinates of X = 2,423,008.89 and Y = 281,842.15; thence West 9,982.51 feet to a point having Coordinates of X = 2,413,026.38 and Y = 281,842.15; thence North 8,971.68 feet to the point of beginning, containing approximately **1,890 acres**, all as more particularly outlined on a plat on file in the Office of Mineral Resources, Department of Natural Resources. All bearings, distances and coordinates are based on Louisiana Coordinate System of 1927, (North or South Zone), where applicable.

NOTE: The above description of the Tract nominated for lease has been provided and corrected, where required, exclusively by the nomination party. Any mineral lease selected from this Tract and awarded by the Louisiana State Mineral Board shall be without warranty of any kind, either express, implied, or statutory, including, but not limited to, the implied warranties of merchantability and fitness for a particular purpose. Should the mineral lease awarded by the Louisiana State Mineral Board be subsequently modified, cancelled or abrogated due to the existence of conflicting leases, operating agreements, private claims or other future obligations or conditions which may affect all or any portion of the leased Tract, it shall not relieve the Lessee of the obligation to pay any bonus due thereon to the Louisiana State Mineral Board, nor shall the Louisiana State Mineral Board be obligated to refund any consideration paid by the Lessor prior to such modification, cancellation, or abrogation, including, but not limited to, bonuses, rentals and royalties.

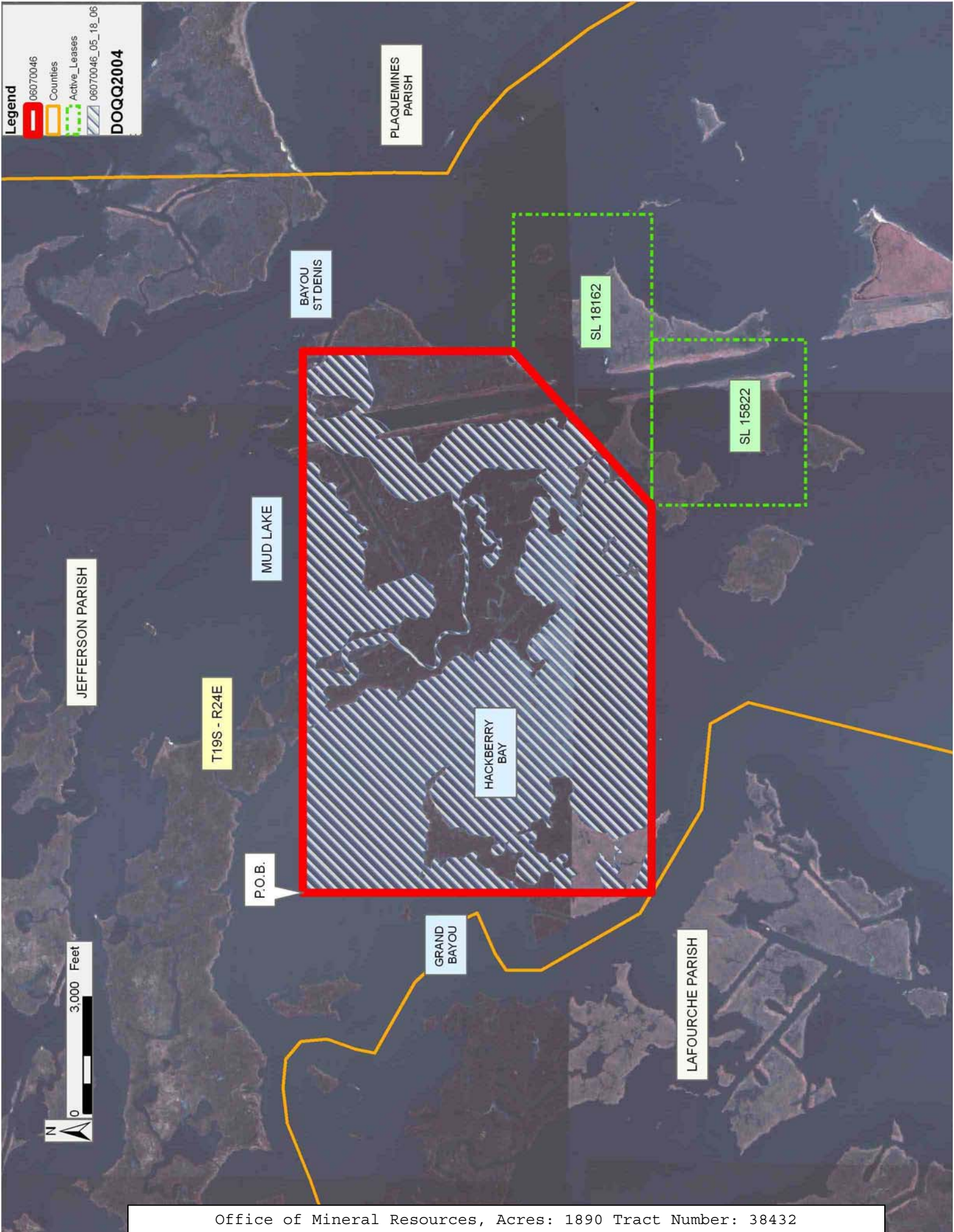
NOTE: The State of Louisiana does hereby reserve, and this lease shall be subject to, the imprescriptible right of surface use in the nature of a servitude in favor of the Department of Natural Resources, including its Offices and Commissions, for the sole purpose of implementing, constructing, servicing and maintaining approved coastal zone management and/or restoration projects. Utilization of any and all rights derived under this lease by the mineral lessee, its agents, successors or assigns, shall not interfere with nor hinder the reasonable surface use by the Department of Natural Resources, its Offices or Commissions, as herein above reserved.

NOTE: The Department of Wildlife and Fisheries has designated certain areas in the coastal waters of the State of Louisiana as Oyster Seed Bed Areas. The exact location of those Seed Bed Areas must be obtained from the Department of Wildlife and Fisheries and any work done under a mineral lease from the State of Louisiana may necessarily be conducted in conformity with the rules and regulations promulgated by the said Department of Wildlife and Fisheries for Oyster Seed Bed Areas.

Applicant: ACADIAN LAND SERVICES, L.L.C.

Bidder	Cash Payment	Price/ Acre	Rental	Oil	Gas	Other







**TRACT 38433 - Portion of Block 47, Main Pass Area, Revised, Plaquemines Parish, Louisiana**

All of the lands now or formerly constituting the beds and bottoms of all water bodies of every nature and description the title of which vests in the State of Louisiana, together with all islands arising therein and other lands formed by accretion or by reliction, where allowed by law, excepting tax adjudicated lands, and not presently under mineral lease and cross hatched on July 12, 2006, situated in Plaquemines Parish, Louisiana, and more particularly described as follows: Beginning at a point on the North line of Block 47, Main Pass Area, Revised, having Coordinates of X = 2,650,100.00 and Y = 278,080.00; thence East 450.00 feet along the North line of said Block 47 to the Northwest corner of State Lease No. 16392, having Coordinates of X = 2,650,550.00 and Y = 278,080.00; thence South 2,599.99 feet along to the West line of said State Lease No. 16392 to its Southwest corner, said corner also being the Northwest Corner of State Lease No. 16570, having Coordinates of X = 2,650,550.00 and Y = 275,480.01; thence along the boundary of said State Lease No. 16570 the following courses: South 258.57 feet to a point having Coordinates of X = 2,650,550.00 and Y = 275,221.44; South 59 degrees 15 minutes 06 seconds East 4,168.83 feet to a point having Coordinates of X = 2,654,132.78 and Y = 273,090.05; East 1,177.47 feet to a point having Coordinates of X = 2,655,310.25 and Y = 273,090.05; and North 24 degrees 40 minutes 37 seconds West 2,300.00 feet to its Northeast corner, said corner also being the most Easterly Southeast corner of said State Lease No. 16392, having Coordinates of X = 2,654,350.00 and Y = 275,180.00; thence North 2,900.00 feet along the East line of said State Lease No. 16392 to its Northeast corner, said corner also being a point on the North line of said Block 47, having Coordinates of X = 2,654,350.00 and Y = 278,080.00; thence East 10,500.00 feet along the North line of said Block 47 to its Northeast corner having Coordinates of X = 2,664,850.00 and Y = 278,080.00; thence South 5,200.00 feet along the East line of said Block 47 to the Northwest corner of State Lease No. 16847 having Coordinates of X = 2,664,850.00 and Y = 272,880.00; thence South 1,400.00 feet along the West line of said State Lease No. 16847 to a point having Coordinates of X = 2,664,850.00 and Y = 271,480.00; thence West 1,305.60 feet to the Northeast corner of State Lease No. 15906 having Coordinates of X = 2,663,544.40 and Y = 271,480.00; thence West 3,194.40 feet along the North line of said State Lease No. 15906 to its Northwest corner, said corner also being the Northeast corner of State Lease No. 1268, as amended, having Coordinates of X = 2,660,350.00 and Y = 271,480.00; thence West 10,250.00 feet along the North line of said State Lease No. 1268, as amended, to point having Coordinates of X = 2,650,100.00 and Y = 271,480.00; thence North 6,600.00 feet to the point of beginning, containing approximately **1,864.16 acres**, all as more particularly outlined on a plat on file in the Office of Mineral Resources, Department of Natural Resources. All bearings, distances and coordinates are based on Louisiana Coordinate System of 1927, (North or South Zone), where applicable.

NOTE: The above description of the Tract nominated for lease has been provided and corrected, where required, exclusively by the nomination party. Any mineral lease selected from this Tract and awarded by the Louisiana State Mineral Board shall be without warranty of any kind, either express, implied, or statutory, including, but not limited to, the implied warranties of merchantability and fitness for a particular purpose. Should the mineral lease awarded by the Louisiana State Mineral Board be subsequently modified, cancelled or abrogated due to the existence of conflicting leases, operating agreements, private claims or other future obligations or conditions which may affect all or any portion of the leased Tract, it shall not relieve the Lessee of the obligation to pay any bonus due thereon to the Louisiana State Mineral Board, nor shall the Louisiana State Mineral Board be obligated to refund any consideration paid by the Lessor prior to such modification, cancellation, or abrogation, including, but not limited to, bonuses, rentals and royalties.

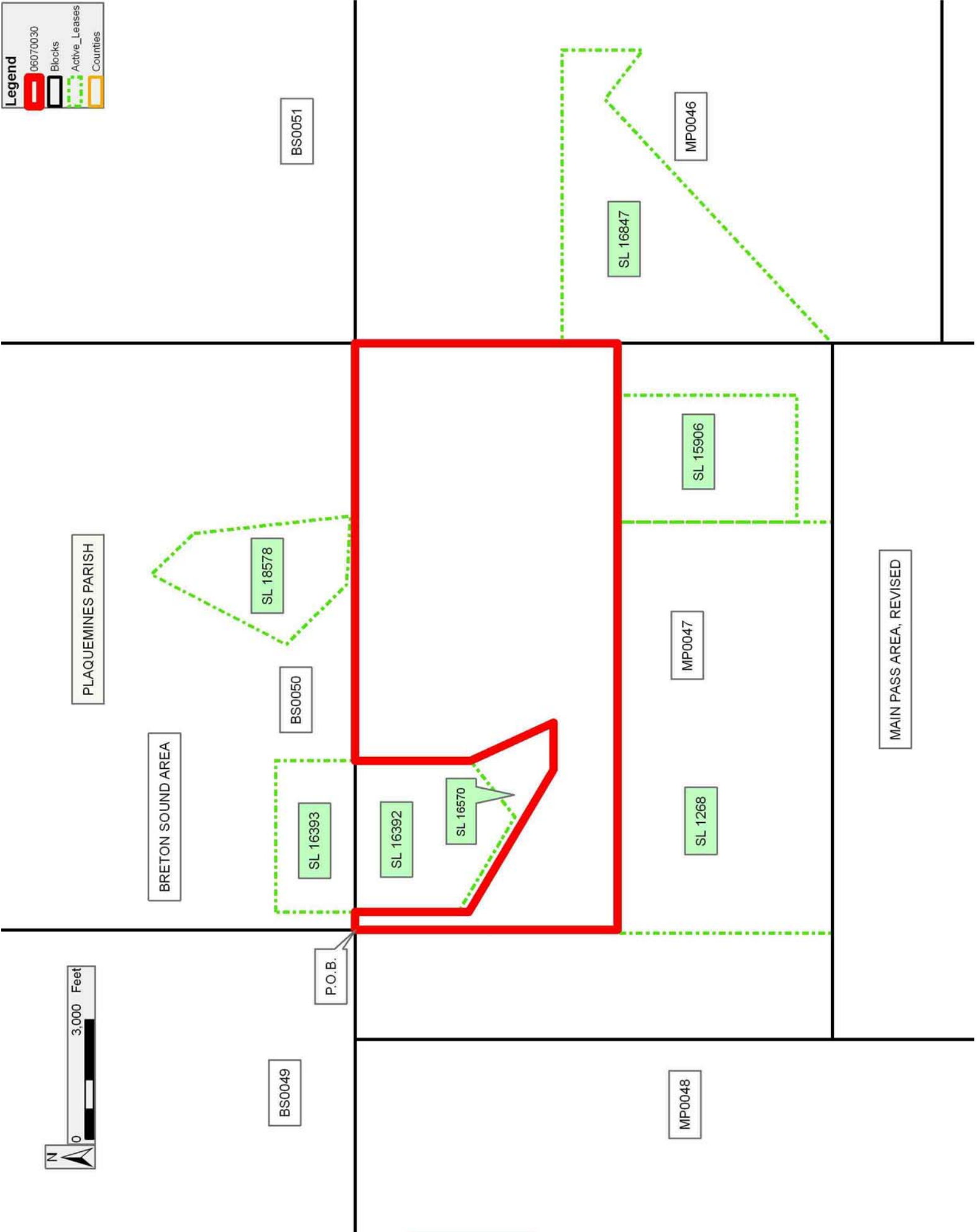
NOTE: The State of Louisiana does hereby reserve, and this lease shall be subject to, the imprescriptible right of surface use in the nature of a servitude in favor of the Department of Natural Resources, including its Offices and Commissions, for the sole purpose of implementing, constructing, servicing and maintaining approved coastal zone management and/or restoration projects. Utilization of any and all rights derived under this lease by the mineral lessee, its agents, successors or assigns, shall not interfere with nor hinder the reasonable surface use by the Department of Natural Resources, its Offices or Commissions, as herein above reserved.

Applicant: SIGNATURE OFFSHORE ASSETS

Bidder	Cash Payment	Price/ Acre	Rental	Oil	Gas	Other

**Legend**

- 06070030
- Blocks
- Active\_Leases
- Counties



**TRACT 38434 - Portion of Blocks 47, and 48, Main Pass Area, Revised, Plaquemines Parish, Louisiana**

All of the lands now or formerly constituting the beds and bottoms of all water bodies of every nature and description the title of which vests in the State of Louisiana, together with all islands arising therein and other lands formed by accretion or by reliction, where allowed by law, excepting tax adjudicated lands, and not presently under mineral lease and cross hatched on July 12, 2006, situated in Plaquemines Parish, Louisiana, and more particularly described as follows: Beginning at a point on the North line of Block 47, Main Pass Area, Revised, having Coordinates of X = 2,650,100.00 and Y = 278,080.00; thence South 6,600.00 feet to a point on the North line of State Lease No. 1268, as amended, having Coordinates of X = 2,650,100.00 and Y = 271,480.00; thence West 75.00 feet along the North line of said State Lease No. 1268, as amended, to its Northwest corner having Coordinates of X = 2,650,025.00 and Y = 271,480.00; thence West 14,675.00 feet to a point on the West line of Block 48, Main Pass Area, Revised, having Coordinates of X = 2,635,350.00 and Y = 271,480.00; thence North 6,600.00 feet along the West line of said Block 48 to its Northwest corner having Coordinates of X = 2,635,350.00 and Y = 278,080.00; thence East 14,750.00 feet to the point of beginning, containing approximately **2,234.85 acres**, all as more particularly outlined on a plat on file in the Office of Mineral Resources, Department of Natural Resources. All bearings, distances and coordinates are based on Louisiana Coordinate System of 1927, (North or South Zone), where applicable.

NOTE: The above description of the Tract nominated for lease has been provided and corrected, where required, exclusively by the nomination party. Any mineral lease selected from this Tract and awarded by the Louisiana State Mineral Board shall be without warranty of any kind, either express, implied, or statutory, including, but not limited to, the implied warranties of merchantability and fitness for a particular purpose. Should the mineral lease awarded by the Louisiana State Mineral Board be subsequently modified, cancelled or abrogated due to the existence of conflicting leases, operating agreements, private claims or other future obligations or conditions which may affect all or any portion of the leased Tract, it shall not relieve the Lessee of the obligation to pay any bonus due thereon to the Louisiana State Mineral Board, nor shall the Louisiana State Mineral Board be obligated to refund any consideration paid by the Lessor prior to such modification, cancellation, or abrogation, including, but not limited to, bonuses, rentals and royalties.

NOTE: The State of Louisiana does hereby reserve, and this lease shall be subject to, the imprescriptible right of surface use in the nature of a servitude in favor of the Department of Natural Resources, including its Offices and Commissions, for the sole purpose of implementing, constructing, servicing and maintaining approved coastal zone management and/or restoration projects. Utilization of any and all rights derived under this lease by the mineral lessee, its agents, successors or assigns, shall not interfere with nor hinder the reasonable surface use by the



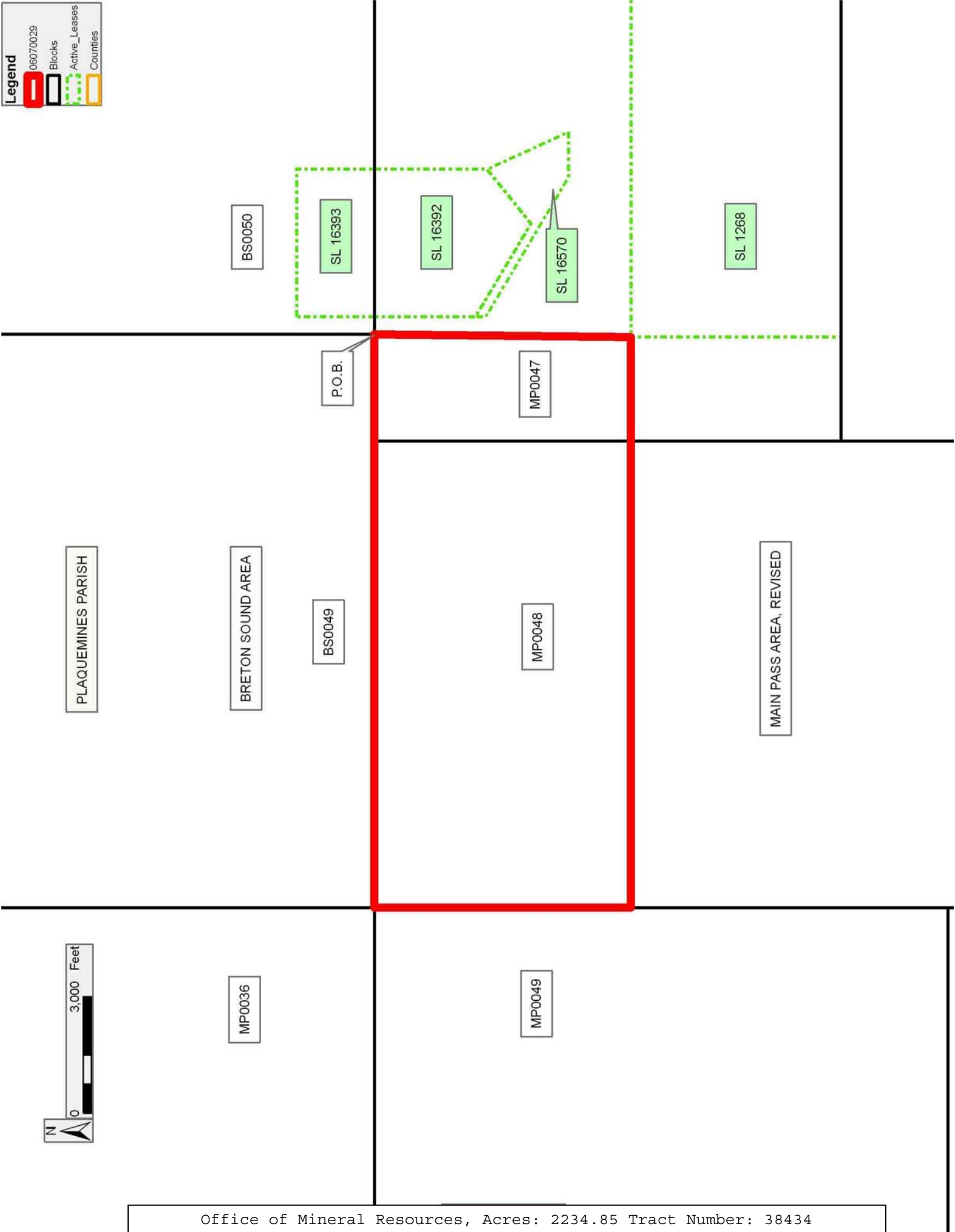
Department of Natural Resources, its Offices or Commissions, as herein above reserved.

Applicant: SIGNATURE OFFSHORE ASSETS

Bidder	Cash Payment	Price/ Acre	Rental	Oil	Gas	Other

**Legend**

- 06070029
- Blocks
- Active\_Leases
- Counties



Beginning at a point on the Shoreline in Block 75, Main Pass Area, Revised having Coordinates of X = 2,755,325.00 and Y = 204,680.00; thence along said Shoreline the following courses: Southwesterly along a straight line to a point having Coordinates of X = 2,755,178.00 and Y = 203,815.00 and Southwesterly along a straight line through the South line of said Block 75 into Block 76, Main Pass Area, Revised to a point having Coordinates of X = 2,754,635.20 and Y = 195,305.43; thence West 7,138.94 feet through the West line of said Block 76 into Block 2, South Pass Area to a point on the East boundary of Pass A Loutre Wildlife Management Area having Coordinates of X = 2,747,496.26 and Y = 195,305.43; thence along the boundary of said Wildlife Management Area along an arc to the left having a radius of 21,825 feet and a center at X = 2,725,759.55 and Y = 193,344.35 to a point on said Shoreline in Block 1, South Pass Area having Coordinates of X = 2,740,368.92 and Y = 209,558.45; thence along said Shoreline the following courses: Southeasterly along a straight line to a point in said Block 75 having Coordinates of X = 2,750,755.00 and Y = 206,535.00 and Southeasterly along a straight line to the point of beginning, containing

NOTE: The above description of the Tract nominated for lease has been provided and corrected, where required, exclusively by the nomination party. Any mineral lease selected from this Tract and awarded by the Louisiana State Mineral Board shall be without warranty of any kind, either express, implied, or statutory, including, but not limited to, the implied warranties of merchantability and fitness for a particular purpose. Should the mineral lease awarded by the Louisiana State Mineral Board be subsequently modified, cancelled or abrogated due to the existence of conflicting leases, operating agreements, private claims or other future obligations or conditions which may affect all or any portion of the leased Tract, it shall not relieve the Lessee of the obligation to pay any bonus due thereon to the Louisiana State Mineral Board, nor shall the Louisiana State Mineral Board be obligated to refund any consideration paid by the Lessor prior to such modification, cancellation, or abrogation, including, but not limited to, bonuses, rentals and royalties.

NOTE: The State of Louisiana does hereby reserve, and this lease shall be subject to, the imprescriptible right of surface use in the nature of a servitude in favor of the Department of Natural Resources, including its Offices and Commissions, for the sole purpose of implementing, constructing, servicing and maintaining approved coastal zone management and/or restoration projects. Utilization of any and all rights derived under this lease by the mineral lessee, its agents, successors or assigns, shall not interfere with nor hinder the reasonable surface use by the Department of Natural Resources, its Offices or Commissions, as herein above reserved.

NOTE: The Department of Wildlife and Fisheries has designated certain areas in the coastal waters of the State of Louisiana as Oyster Seed Bed Areas. The exact location of those Seed Bed Areas must be obtained from the Department of Wildlife and Fisheries and any work done under a mineral lease from the State of Louisiana may necessarily be conducted in

conformity with the rules and regulations promulgated by the said Department of Wildlife and Fisheries for Oyster Seed Bed Areas.  
approximately **2,499.48 acres**

Applicant: LESLIE M. COOPER

Bidder	Cash Payment	Price/ Acre	Rental	Oil	Gas	Other



**Legend**

- 06070005
- Wildlife
- Blocks
- Active\_Leases
- Counties

