

TRACT 38416 - St. Landry Parish, Louisiana

All of the lands now or formerly constituting the beds and bottoms of all water bodies of every nature and description the title of which vests in the State of Louisiana, together with all islands arising therein and other lands formed by accretion or by reliction, where allowed by law, excepting tax adjudicated lands, and not presently under mineral lease and cross hatched on July 12, 2006, situated in St. Landry Parish, Louisiana, and more particularly described as follows: Beginning at a point having Coordinates of X = 1,730,368.34 and Y = 658,012.48; thence East 6,526.57 feet to a point having Coordinates of X = 1,736,894.91 and Y = 658,012.48; thence South 4,113.55 feet to a point having Coordinates of X = 1,736,984.91 and Y = 653,899.92; thence West 6,616.57 feet to a point having Coordinates of X = 1,730,368.34 and Y = 653,899.92; thence North 4,112.56 feet to the point of beginning, containing approximately **4 acres**, all as more particularly outlined on a plat on file in the Office of Mineral Resources, Department of Natural Resources. All bearings, distances and coordinates are based on Louisiana Coordinate System of 1927, (North or South Zone), where applicable.

NOTE: The above description of the Tract nominated for lease has been provided and corrected, where required, exclusively by the nomination party. Any mineral lease selected from this Tract and awarded by the Louisiana State Mineral Board shall be without warranty of any kind, either express, implied, or statutory, including, but not limited to, the implied warranties of merchantability and fitness for a particular purpose. Should the mineral lease awarded by the Louisiana State Mineral Board be subsequently modified, cancelled or abrogated due to the existence of conflicting leases, operating agreements, private claims or other future obligations or conditions which may affect all or any portion of the leased Tract, it shall not relieve the Lessee of the obligation to pay any bonus due thereon to the Louisiana State Mineral Board, nor shall the Louisiana State Mineral Board be obligated to refund any consideration paid by the Lessor prior to such modification, cancellation, or abrogation, including, but not limited to, bonuses, rentals and royalties.

Applicant: STEPHEN M. JENKINS & ASSOCIATES, INC.

Bidder	Cash Payment	Price/Acre	Rental	Oil	Gas	Other

Legend

- 06070035
- Active_Leases
- Counties
- 06070035_05_18_06

DOQQ2004



TRACT 38417 - St. Landry Parish, Louisiana





All of the lands now or formerly constituting the beds and bottoms of all water bodies of every nature and description the title of which vests in the State of Louisiana, together with all islands arising therein and other lands formed by accretion or by reliction, where allowed by law, excepting tax adjudicated lands, and not presently under mineral lease and cross hatched on July 12, 2006, situated in St. Landry Parish, Louisiana, and more particularly described as follows: Beginning at a point having Coordinates of X = 1,726,700.92 and Y = 653,899.92; thence East 6,526.57 feet to a point having Coordinates of X = 1,733,227.49 and Y = 653,899.92; thence South 4,021.85 feet to a point having Coordinates of X = 1,733,227.49 and Y = 649,878.07; thence West 6,526.57 feet to a point having Coordinates of X = 1,726,700.92 and Y = 649,878.07; thence North 4,021.85 feet to the point of beginning, containing approximately **5 acres**, all as more particularly outlined on a plat on file in the Office of Mineral Resources, Department of Natural Resources. All bearings, distances and coordinates are based on Louisiana Coordinate System of 1927, (North or South Zone), where applicable.

NOTE: The above description of the Tract nominated for lease has been provided and corrected, where required, exclusively by the nomination party. Any mineral lease selected from this Tract and awarded by the Louisiana State Mineral Board shall be without warranty of any kind, either express, implied, or statutory, including, but not limited to, the implied warranties of merchantability and fitness for a particular purpose. Should the mineral lease awarded by the Louisiana State Mineral Board be subsequently modified, cancelled or abrogated due to the existence of conflicting leases, operating agreements, private claims or other future obligations or conditions which may affect all or any portion of the leased Tract, it shall not relieve the Lessee of the obligation to pay any bonus due thereon to the Louisiana State Mineral Board, nor shall the Louisiana State Mineral Board be obligated to refund any consideration paid by the Lessor prior to such modification, cancellation, or abrogation, including, but not limited to, bonuses, rentals and royalties.

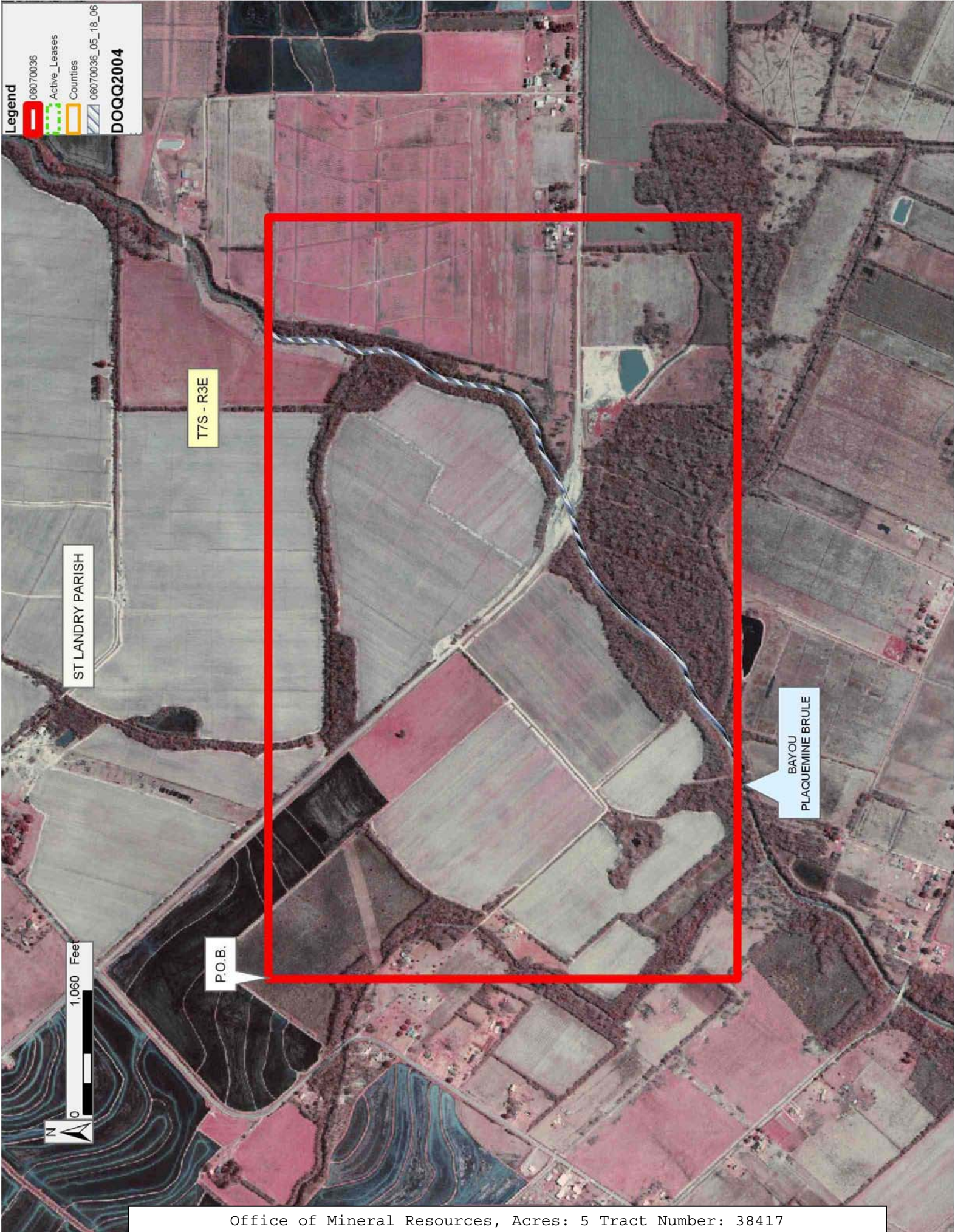
Applicant: STEPHEN M. JENKINS & ASSOCIATES, INC.

Bidder	Cash Payment	Price/Acre	Rental	Oil	Gas	Other

Legend

-  06070036
-  Active_Leases
-  Counties
-  06070036_05_18_06

DOQQ2004



ST LANDRY PARISH

T7S - R3E

P.O.B.

BAYOU
PLAQUEMINE BRULE



TRACT 38418 - St. Landry Parish, Louisiana

All of the lands now or formerly constituting the beds and bottoms of all water bodies of every nature and description the title of which vests in the State of Louisiana, together with all islands arising therein and other lands formed by accretion or by reliction, where allowed by law, excepting tax adjudicated lands, and not presently under mineral lease and cross hatched on July 12, 2006, situated in St. Landry Parish, Louisiana, and more particularly described as follows: Beginning at a point having Coordinates of X = 1,723,929.87 and Y = 649,878.07; thence East 5,951.98 feet to a point having Coordinates of X = 1,729,881.85 and Y = 649,878.07; thence South 4,704.45 feet to a point having Coordinates of X = 1,729,881.85 and Y = 645,173.62; thence West 5,951.98 feet to a point having Coordinates of X = 1,723,929.87 and Y = 645,173.62; thence North 4,704.45 feet to the point of beginning, containing approximately **5 acres**, all as more particularly outlined on a plat on file in the Office of Mineral Resources, Department of Natural Resources. All bearings, distances and coordinates are based on Louisiana Coordinate System of 1927, (North or South Zone), where applicable.

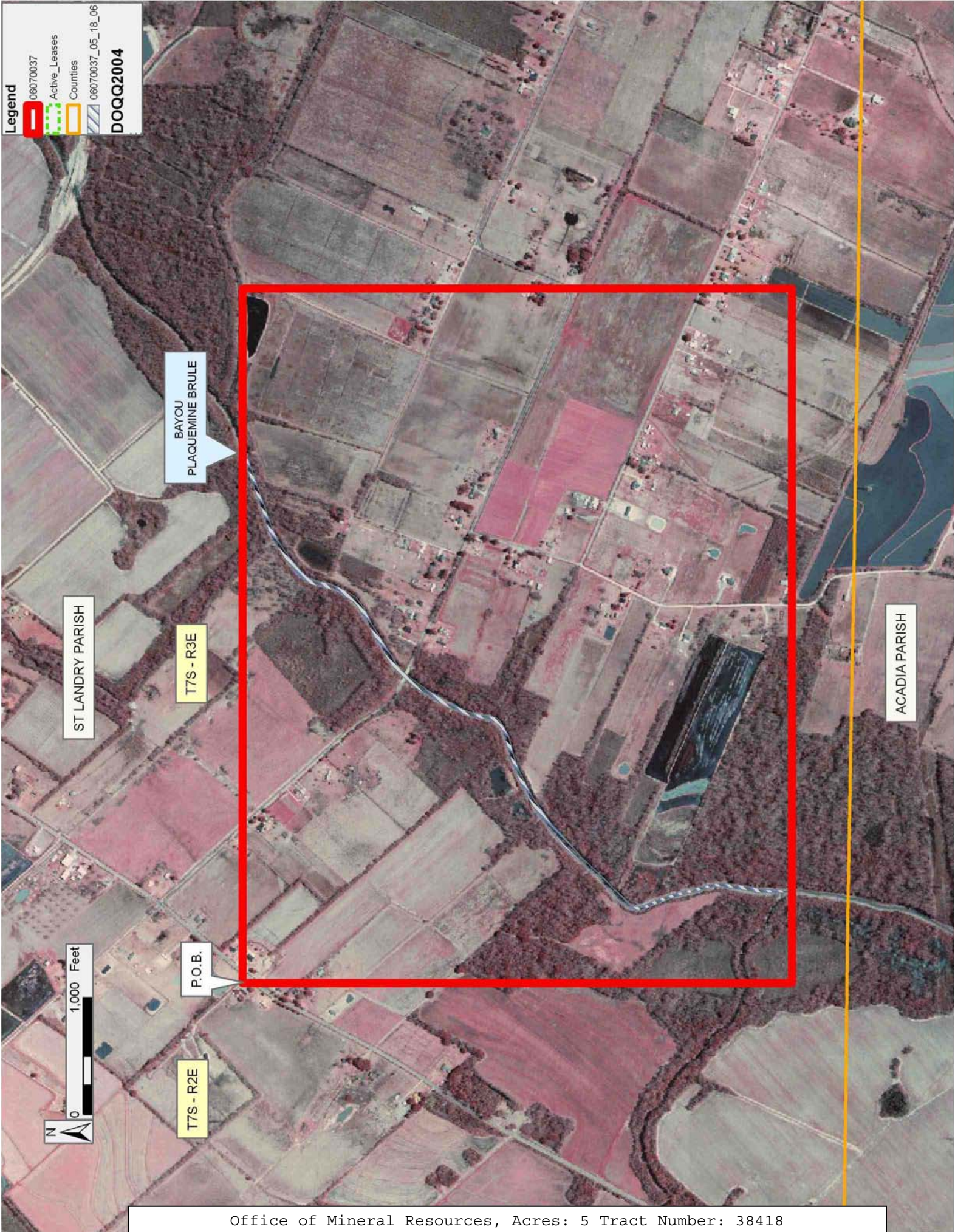
NOTE: The above description of the Tract nominated for lease has been provided and corrected, where required, exclusively by the nomination party. Any mineral lease selected from this Tract and awarded by the Louisiana State Mineral Board shall be without warranty of any kind, either express, implied, or statutory, including, but not limited to, the implied warranties of merchantability and fitness for a particular purpose. Should the mineral lease awarded by the Louisiana State Mineral Board be subsequently modified, cancelled or abrogated due to the existence of conflicting leases, operating agreements, private claims or other future obligations or conditions which may affect all or any portion of the leased Tract, it shall not relieve the Lessee of the obligation to pay any bonus due thereon to the Louisiana State Mineral Board, nor shall the Louisiana State Mineral Board be obligated to refund any consideration paid by the Lessor prior to such modification, cancellation, or abrogation, including, but not limited to, bonuses, rentals and royalties.

Applicant: STEPHEN M. JENKINS & ASSOCIATES, INC.

Bidder	Cash Payment	Price/Acre	Rental	Oil	Gas	Other

Legend

- 06070037
- Active_Leases
- Counties
- 06070037_05_18_06
- DOQQ2004**



TRACT 38419 - Acadia and St. Landry Parishes, Louisiana






All of the lands now or formerly constituting the beds and bottoms of all water bodies of every nature and description the title of which vests in the State of Louisiana, together with all islands arising therein and other lands formed by accretion or by reliction, where allowed by law, excepting tax adjudicated lands, and not presently under mineral lease and cross hatched on July 12, 2006, situated in Acadia and St. Landry Parishes, Louisiana, and more particularly described as follows: Beginning at a point having Coordinates of X = 1,723,929.87 and Y = 645,173.62; thence East 5,951.98 feet to a point having Coordinates of X = 1,729,881.85 and Y = 645,173.62; thence South 6,213.88 feet to a point having Coordinates of X = 1,729,881.85 and Y = 638,959.74; thence West 5,951.98 feet to a point having Coordinates of X = 1,723,929.87 and Y = 638,959.74; thence North 6,213.88 feet to the point of beginning, containing approximately **7 acres**, all as more particularly outlined on a plat on file in the Office of Mineral Resources, Department of Natural Resources. All bearings, distances and coordinates are based on Louisiana Coordinate System of 1927, (North or South Zone), where applicable.

NOTE: The above description of the Tract nominated for lease has been provided and corrected, where required, exclusively by the nomination party. Any mineral lease selected from this Tract and awarded by the Louisiana State Mineral Board shall be without warranty of any kind, either express, implied, or statutory, including, but not limited to, the implied warranties of merchantability and fitness for a particular purpose. Should the mineral lease awarded by the Louisiana State Mineral Board be subsequently modified, cancelled or abrogated due to the existence of conflicting leases, operating agreements, private claims or other future obligations or conditions which may affect all or any portion of the leased Tract, it shall not relieve the Lessee of the obligation to pay any bonus due thereon to the Louisiana State Mineral Board, nor shall the Louisiana State Mineral Board be obligated to refund any consideration paid by the Lessor prior to such modification, cancellation, or abrogation, including, but not limited to, bonuses, rentals and royalties.

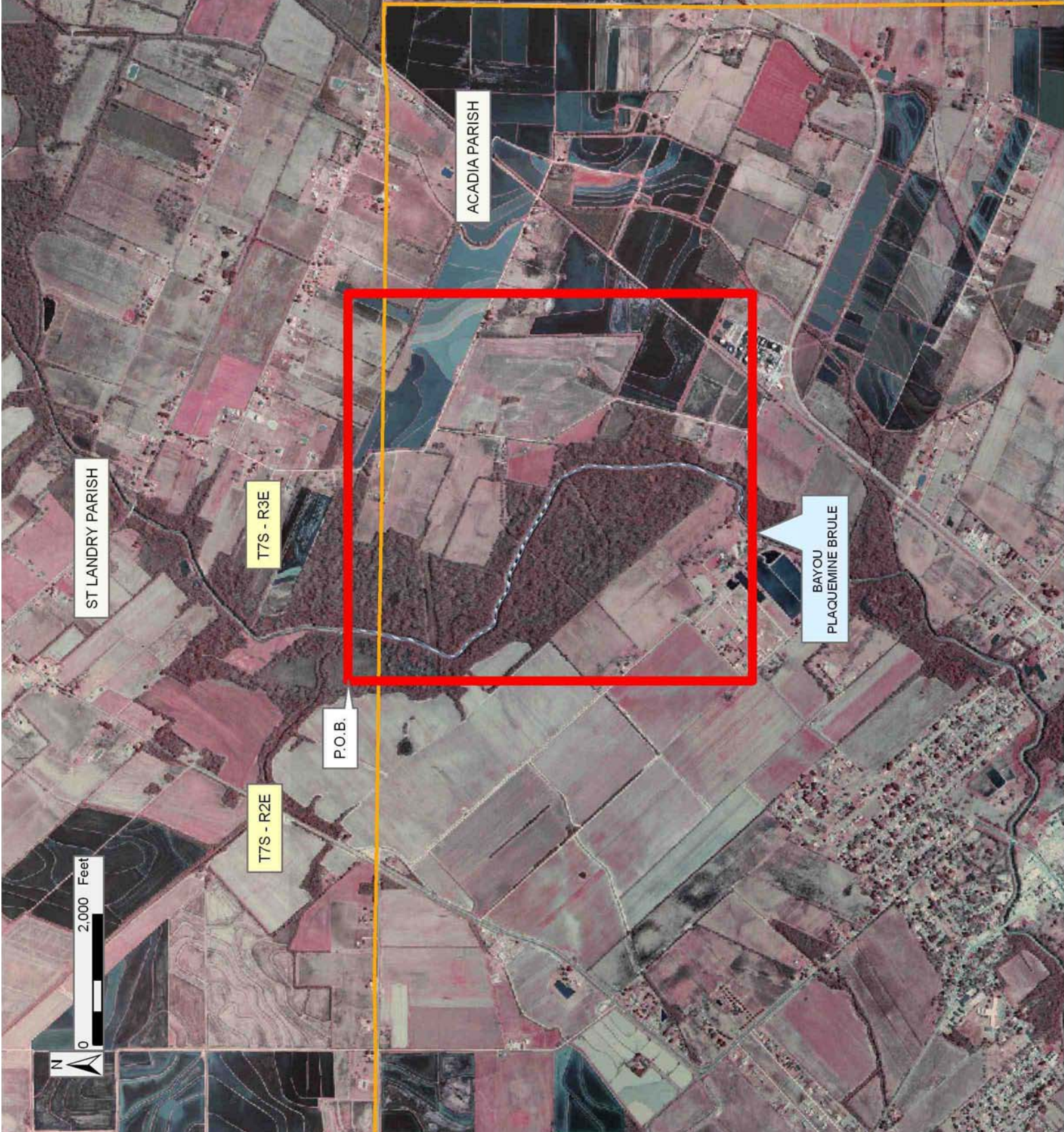
Applicant: STEPHEN M. JENKINS & ASSOCIATES, INC.

Bidder	Cash Payment	Price/Acre	Rental	Oil	Gas	Other

Legend

-  06070038
-  Blocks
-  Active_Leases
-  Counties
-  06070038_05_18_06

DOQQ2004



TRACT 38420 - Lafourche Parish, Louisiana

All of the lands now or formerly constituting the beds and bottoms of all water bodies of every nature and description the title of which vests in the State of Louisiana, together with all islands arising therein and other lands formed by accretion or by reliction, where allowed by law, excepting tax adjudicated lands, and not presently under mineral lease and cross hatched on July 12, 2006, situated in Lafourche Parish, Louisiana, and more particularly described as follows: Beginning at a point having Coordinates of X = 2,232,920.00 and Y = 417,564.72; Thence South a distance of 17,474.47 feet to a point having Coordinates of X = 2,232,920.00 and Y = 400,090.25; Thence West a distance of 11,816.15 feet to a point having Coordinates of X = 2,221,103.85 and Y = 400,090.25; Thence North a distance of 903.18 feet to a point having Coordinates of X = 2,231,103.85 and Y = 400,993.43; Thence East a distance of 10,666.00 feet to a point having the Coordinates of X = 2,231,769.85 and Y = 400,993.43; Thence North a distance of 2,836.15 feet to a point having the Coordinates of X = 2,231,769.85 and Y = 403,829.58; Thence West a distance of 10,666.00 feet to a point having the Coordinates of X = 2,231,103.85 and Y = 403,829.58; Thence North a distance of 13,735.14 feet to a point having the Coordinates of X = 2,221,103.85 and Y = 417,564.72 Thence East a distance of 11,816.15 feet to a point of beginning **LESS AND EXCEPT** that portion, if any of the Lake Boeuf Wildlife Management Area that lies within the above described tract, containing approximately **2147 acres**, all as more particularly outlined on a plat on file in the Office of Mineral Resources, Department of Natural Resources. All bearings, distances and coordinates are based on Louisiana Coordinate System of 1927, (North or South Zone), where applicable.

NOTE: The above description of the Tract nominated for lease has been provided and corrected, where required, exclusively by the nomination party. Any mineral lease selected from this Tract and awarded by the Louisiana State Mineral Board shall be without warranty of any kind, either express, implied, or statutory, including, but not limited to, the implied warranties of merchantability and fitness for a particular purpose. Should the mineral lease awarded by the Louisiana State Mineral Board be subsequently modified, cancelled or abrogated due to the existence of conflicting leases, operating agreements, private claims or other future obligations or conditions which may affect all or any portion of the leased Tract, it shall not relieve the Lessee of the obligation to pay any bonus due thereon to the Louisiana State Mineral Board, nor shall the Louisiana State Mineral Board be obligated to refund any consideration paid by the Lessor prior to such modification, cancellation, or abrogation, including, but not limited to, bonuses, rentals and royalties.

NOTE: This tract is located within the boundaries of a wildlife management area or refuge and any operations conducted thereon in conjunction with this mineral lease may be subject to rules and regulations promulgated by the Department of Wildlife and Fisheries for the protection of fish, birds

and other wildlife including, but not necessarily limited to, the following:

1. No activities will be allowed without written authorization from the Louisiana Department of Wildlife and Fisheries. All projects will be coordinated and approved by the appropriate WMA Supervisor prior to any activities on the wildlife management area.
2. Proposed projects will be evaluated on a case by case basis. Modifications to proposed projects may be required including, but not limited to, access routes, spoil placement, well sites, flow lines and other appurtenant structures required by the Louisiana Department of Wildlife and Fisheries.
3. Compensatory mitigation will be required to offset unavoidable wetland impacts.
4. Removal of all structures, facilities, and equipment will be required within 120 days of abandonment unless otherwise agreed to by the Department of Wildlife and Fisheries.
5. No activities will be allowed during the hunting season unless approved by the Department.
6. Compliance with the said WMA regulations will be required unless otherwise specified by the Department.
7. Prior to submitting applications for wetland permits to Federal and State permitting agencies the lease holder shall coordinate project details with the Louisiana Department of Wildlife and Fisheries, Fur and Refuge Division. Contact person for the Department will be Mike Windham at (504) 568-5886.

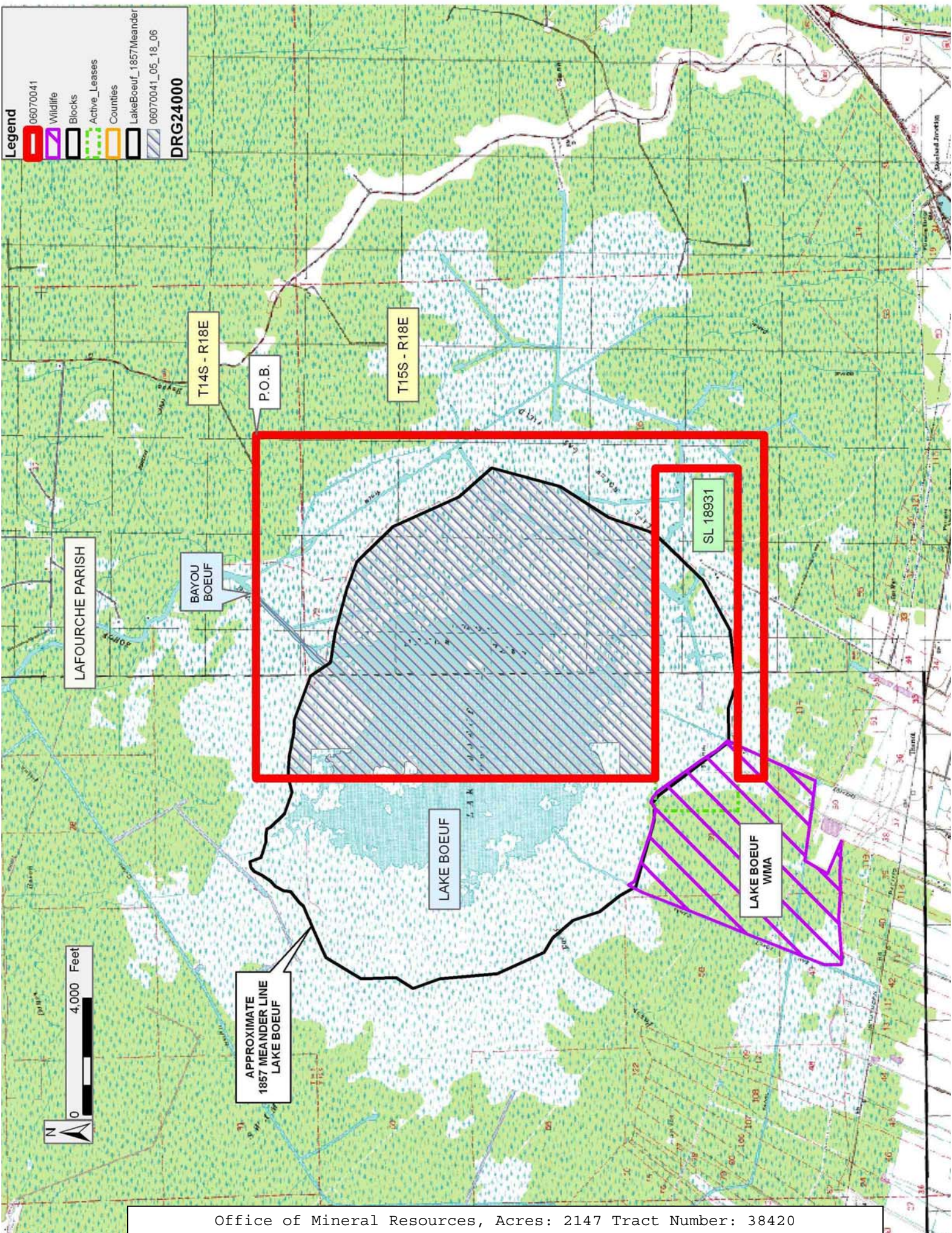
NOTE: The State of Louisiana does hereby reserve, and this lease shall be subject to, the imprescriptible right of surface use in the nature of a servitude in favor of the Department of Natural Resources, including its Offices and Commissions, for the sole purpose of implementing, constructing, servicing and maintaining approved coastal zone management and/or restoration projects. Utilization of any and all rights derived under this lease by the mineral lessee, its agents, successors or assigns, shall not interfere with nor hinder the reasonable surface use by the Department of Natural Resources, its Offices or Commissions, as herein above reserved.

Bidder	Cash Payment	Price/Acre	Rental	Oil	Gas	Other

Applicant: OIL LAND SERVICES, INC.

Legend

- 06070041
- Wildlife
- Blocks
- Active_Leases
- Counties
- LakeBoeuf_1857Meander
- 06070041_05_18_06
- DRG24000**



T14S - R18E

T15S - R18E

APPROXIMATE
1857 MEANDER LINE
LAKE BOEUF

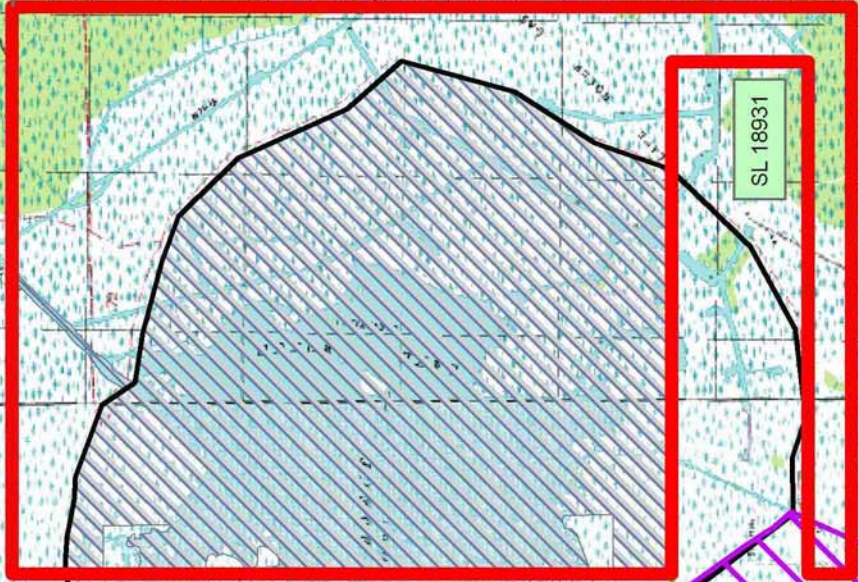
LAFOURCHE PARISH

BAYOU
BOEUF

LAKE
BOEUF

LAKE BOEUF
WMA

SL 18931



0 4,000 Feet



TRACT 38421 - Jefferson Parish, Louisiana

All of the lands now or formerly constituting the beds and bottoms of all water bodies of every nature and description the title of which vests in the State of Louisiana, together with all islands arising therein and other lands formed by accretion or by reliction, where allowed by law, excepting tax adjudicated lands, and not presently under mineral lease and cross hatched on July 12, 2006, situated in Jefferson Parish, Louisiana, and more particularly described as follows: Beginning at a point having Coordinates of X = 2,401,420.00 and Y = 349,720.00; thence West 12,105.00 feet to a point on the East boundary of State Lease No. 18515 having Coordinates of X = 2,389,315.00 and Y = 349,720.00; thence North 3,975.00 feet along the East boundary of said State Lease No. 18515 to its Northeast corner, also being the Southeast corner of State Lease No. 18513, having Coordinates of X = 2,389,315.00 and Y = 353,695.00; thence along the boundary of said State Lease No. 18513 the following courses and distances: North 5,405.00 feet to a point having Coordinates of X = 2,389,315.00 and Y = 359,100.00, North 22 degrees 50 minutes 16 seconds West 5,964.58 feet to its Northeast corner having Coordinates of X = 2,387,000.00 and Y = 364,597.00 and West 3,700.00 feet to the Southern most Southeast corner of State Lease No. 18511 having Coordinates of X = 2,383,300.00 and Y = 364,597.00; thence along the boundary of said State Lease No. 18511 the following courses and distances: North 3,603.00 feet to a point having Coordinates of X = 2,383,300.00 and Y = 368,200.00 and East 6,015.00 feet to its Eastern most Southeast corner, also being a point on the West boundary of State Lease No. 18512 having Coordinates of X = 2,389,315.00 and Y = 368,200.00; thence along the boundary of said State Lease No. 18512 the following courses and distances: South 3,603.00 feet to a point having Coordinates of X = 2,389,315.00 and Y = 364,597.00 and East 12,105.00 feet to a point having Coordinates of X = 2,401,420.00 and Y = 364,597.00; thence South 14,877.00 feet to the point of beginning, containing approximately **484 acres**, all as more particularly outlined on a plat on file in the Office of Mineral Resources, Department of Natural Resources. All bearings, distances and coordinates are based on Louisiana Coordinate System of 1927, (North or South Zone), where applicable.

NOTE: The above description of the Tract nominated for lease has been provided and corrected, where required, exclusively by the nomination party. Any mineral lease selected from this Tract and awarded by the Louisiana State Mineral Board shall be without warranty of any kind, either express, implied, or statutory, including, but not limited to, the implied warranties of merchantability and fitness for a particular purpose. Should the mineral lease awarded by the Louisiana State Mineral Board be subsequently modified, cancelled or abrogated due to the existence of conflicting leases, operating agreements, private claims or other future obligations or conditions which may affect all or any portion of the leased Tract, it shall not relieve the Lessee of the obligation to pay any bonus due thereon to the Louisiana State Mineral Board, nor shall the Louisiana State Mineral Board be obligated to refund any consideration

paid by the Lessor prior to such modification, cancellation, or abrogation, including, but not limited to, bonuses, rentals and royalties.

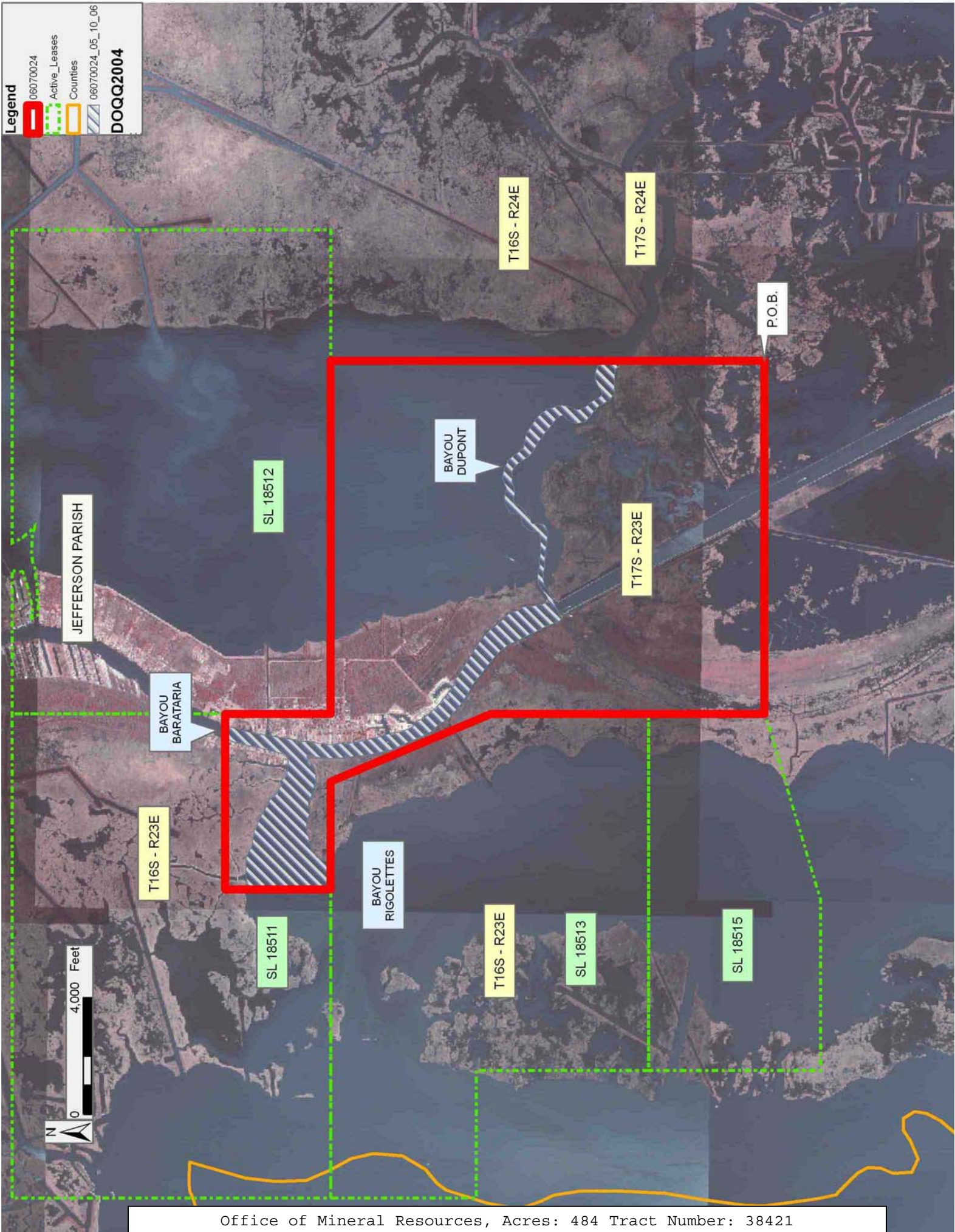
NOTE: The State of Louisiana does hereby reserve, and this lease shall be subject to, the imprescriptible right of surface use in the nature of a servitude in favor of the Department of Natural Resources, including its Offices and Commissions, for the sole purpose of implementing, constructing, servicing and maintaining approved coastal zone management and/or restoration projects. Utilization of any and all rights derived under this lease by the mineral lessee, its agents, successors or assigns, shall not interfere with nor hinder the reasonable surface use by the Department of Natural Resources, its Offices or Commissions, as herein above reserved.

Applicant: COUBA PROPERTIES

Bidder	Cash Payment	Price/Acre	Rental	Oil	Gas	Other

Legend

- 06070024
- Active_Leases
- Counties
- 06070024_05_10_06
- DOQQ2004**



TRACT 38422 - Jefferson and Lafourche Parishes, Louisiana

All of the lands now or formerly constituting the beds and bottoms of all water bodies of every nature and description the title of which vests in the State of Louisiana, together with all islands arising therein and other lands formed by accretion or by reliction, where allowed by law, excepting tax adjudicated lands, and not presently under mineral lease and cross hatched on July 12, 2006, situated in Jefferson and Lafourche Parishes, Louisiana, and more particularly described as follows: Beginning at a point having Coordinates of X = 2,369,550.00 and Y = 364,597.00; thence East 3,179.00 feet to the Northwest corner of State Lease No. 18513 having Coordinates of X = 2,372,729.00 and Y = 364,597.00; thence along the boundary of said State Lease No. 18513 the following courses and distances: South 4,997.00 feet to a point having Coordinates of X = 2,372,729.00 and Y = 359,600.00, East 4,371.00 feet to a point having Coordinates of X = 2,377,100.00 and Y = 359,600.00 and South 5,905.00 feet to its Southwest corner, also being the Northwest corner of State Lease No. 18515 having Coordinates of X = 2,377,100.00 and Y = 353,695.00; thence South 5,895.00 feet along the West boundary of said State Lease No. 18515 to its Southwest corner having Coordinates of X = 2,377,100.00 and Y = 347,800.00; thence West 7,530.00 feet to a point having Coordinates of X = 2,369,570.00 and Y = 347,800.00; thence North 3,972.00 feet to the Southwest corner of State Lease No. 18076 having Coordinates of X = 2,369,570.00 and Y = 351,772.00; thence along the boundary of said State Lease No. 18076 the following courses and distances: East 3,159.00 feet to its Southeast corner having Coordinates of X = 2,372,729.00 and Y = 351,772.00, North 2,344.00 feet to its Northeast corner having Coordinates of X = 2,372,729.00 and Y = 354,116.00 and West 3,159.00 feet to its Northwest corner having Coordinates of X = 2,369,570.00 and Y = 354,116.00; thence West 20.00 feet to a point having Coordinates of X = 2,369,550.00 and Y = 354,116.00; thence North 1,509.00 feet to the Southwest corner of State Lease No. 18651 having Coordinates of X = 2,369,550.00 and Y = 355,625.00; thence along the boundary of said State Lease No. 18651 the following courses and distances: East 3,526.00 feet to its Southeast corner having Coordinates of X = 2,373,076.00 and Y = 355,625.00, North 2,100.00 feet to its Northeast corner having Coordinates of X = 2,373,076.00 and Y = 357,725.00 and West 3,526.00 feet to its Northwest corner having Coordinates of X = 2,369,550.00 and Y = 357,725.00; thence North 6,872.00 feet to the point of beginning, containing approximately **1,993 acres**, all as more particularly outlined on a plat on file in the Office of Mineral Resources, Department of Natural Resources. All bearings, distances and coordinates are based on Louisiana Coordinate System of 1927, (North or South Zone), where applicable.

NOTE: The above description of the Tract nominated for lease has been provided and corrected, where required, exclusively by the nomination party. Any mineral lease selected from this Tract and awarded by the Louisiana State Mineral Board shall be without warranty of any kind, either express, implied, or statutory, including, but not limited to, the implied warranties of merchantability and fitness for a particular

purpose. Should the mineral lease awarded by the Louisiana State Mineral Board be subsequently modified, cancelled or abrogated due to the existence of conflicting leases, operating agreements, private claims or other future obligations or conditions which may affect all or any portion of the leased Tract, it shall not relieve the Lessee of the obligation to pay any bonus due thereon to the Louisiana State Mineral Board, nor shall the Louisiana State Mineral Board be obligated to refund any consideration paid by the Lessor prior to such modification, cancellation, or abrogation, including, but not limited to, bonuses, rentals and royalties.

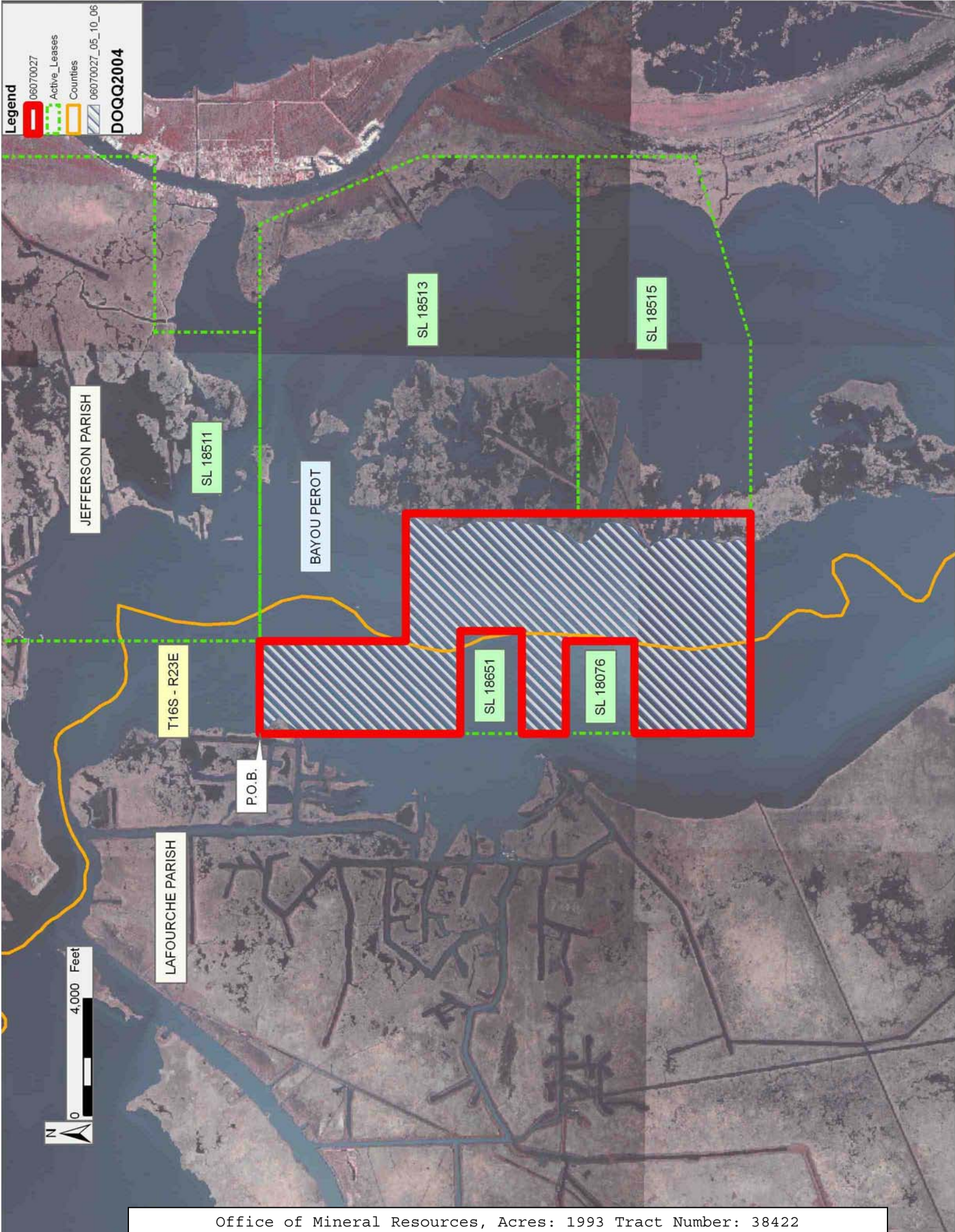
NOTE: The State of Louisiana does hereby reserve, and this lease shall be subject to, the imprescriptible right of surface use in the nature of a servitude in favor of the Department of Natural Resources, including its Offices and Commissions, for the sole purpose of implementing, constructing, servicing and maintaining approved coastal zone management and/or restoration projects. Utilization of any and all rights derived under this lease by the mineral lessee, its agents, successors or assigns, shall not interfere with nor hinder the reasonable surface use by the Department of Natural Resources, its Offices or Commissions, as herein above reserved.

Applicant: COUBA PROPERTIES

Bidder	Cash Payment	Price/Acre	Rental	Oil	Gas	Other

Legend

- 06070027
- Active_Leases
- Counties
- 06070027_05_10_06
- DOQQ2004**



TRACT 38423 - Jefferson Parish, Louisiana

All of the lands now or formerly constituting the beds and bottoms of all water bodies of every nature and description the title of which vests in the State of Louisiana, together with all islands arising therein and other lands formed by accretion or by reliction, where allowed by law, excepting tax adjudicated lands, and not presently under mineral lease and cross hatched on July 12, 2006, situated in Jefferson Parish, Louisiana, and more particularly described as follows: Beginning at a point having Coordinates of X = 2,401,420.00 and Y = 349,720.00; thence South 11,420.00 feet to a point having Coordinates of X = 2,401,420.00 and Y = 338,300.00; thence West 17,520.00 feet to a point having Coordinates of X = 2,383,900.00 and Y = 338,300.00; thence North 9,770.78 feet to a point on the Southern boundary of State Lease No. 18515 having Coordinates of X = 2,383,900.00 and Y = 348,070.78; thence along the boundary of said State Lease No. 18515 the following courses and distances: North 73 degrees 15 minutes 18 seconds East 5,654.78 feet to its Eastern most Southeast corner having Coordinates of X = 2,389,315.00 and Y = 349,700.00 and North 20.00 feet to a point having Coordinates of X = 2,389,315.00 and Y = 349,720.00; thence East 12,105.00 feet to the point of beginning, containing approximately **902 acres**, all as more particularly outlined on a plat on file in the Office of Mineral Resources, Department of Natural Resources. All bearings, distances and coordinates are based on Louisiana Coordinate System of 1927, (North or South Zone), where applicable.

NOTE: The above description of the Tract nominated for lease has been provided and corrected, where required, exclusively by the nomination party. Any mineral lease selected from this Tract and awarded by the Louisiana State Mineral Board shall be without warranty of any kind, either express, implied, or statutory, including, but not limited to, the implied warranties of merchantability and fitness for a particular purpose. Should the mineral lease awarded by the Louisiana State Mineral Board be subsequently modified, cancelled or abrogated due to the existence of conflicting leases, operating agreements, private claims or other future obligations or conditions which may affect all or any portion of the leased Tract, it shall not relieve the Lessee of the obligation to pay any bonus due thereon to the Louisiana State Mineral Board, nor shall the Louisiana State Mineral Board be obligated to refund any consideration paid by the Lessor prior to such modification, cancellation, or abrogation, including, but not limited to, bonuses, rentals and royalties.

NOTE: The State of Louisiana does hereby reserve, and this lease shall be subject to, the imprescriptible right of surface use in the nature of a servitude in favor of the Department of Natural Resources, including its Offices and Commissions, for the sole purpose of implementing, constructing, servicing and maintaining approved coastal zone management and/or restoration projects. Utilization of any and all rights derived under this lease by the mineral lessee, its agents, successors or assigns, shall not interfere with nor hinder the reasonable surface use by the

Department of Natural Resources, its Offices or Commissions, as herein above reserved.

Applicant: COUBA PROPERTIES

Bidder	Cash Payment	Price/Acre	Rental	Oil	Gas	Other

Legend

- 06070025
- Active_Leases
- Counties
- 06070025_05_10_06

DOQQ2004



TRACT 38424 - Jefferson and Lafourche Parishes, Louisiana

All of the lands now or formerly constituting the beds and bottoms of all water bodies of every nature and description the title of which vests in the State of Louisiana, together with all islands arising therein and other lands formed by accretion or by reliction, where allowed by law, excepting tax adjudicated lands, and not presently under mineral lease and cross hatched on July 12, 2006, situated in Jefferson and Lafourche Parishes, Louisiana, and more particularly described as follows: Beginning at a point having Coordinates of X = 2,369,570.00 and Y = 338,300.00; thence North 9,500.00 feet to a point having Coordinates of X = 2,369,570.00 and Y = 347,800.00; thence East 7,530.00 feet to the Southwest corner of State Lease No. 18515 having Coordinates of X = 2,377,100.00 and Y = 347,800.00; thence along the boundary of said State Lease No. 18515 the following courses and distances: East 5,900.00 feet to a point having Coordinates of X = 2,383,000.00 and Y = 347,800.00 and North 73 degrees 15 minutes 18 seconds East 939.85 feet to a point having Coordinates of X = 2,383,900.00 and Y = 348,070.78; thence South 9,770.78 feet to a point having Coordinates of X = 2,383,900.00 and Y = 338,300.00; thence West 14,330.00 feet to the point of beginning, containing approximately **2,473 acres**, all as more particularly outlined on a plat on file in the Office of Mineral Resources, Department of Natural Resources. All bearings, distances and coordinates are based on Louisiana Coordinate System of 1927, (North or South Zone), where applicable.

NOTE: The above description of the Tract nominated for lease has been provided and corrected, where required, exclusively by the nomination party. Any mineral lease selected from this Tract and awarded by the Louisiana State Mineral Board shall be without warranty of any kind, either express, implied, or statutory, including, but not limited to, the implied warranties of merchantability and fitness for a particular purpose. Should the mineral lease awarded by the Louisiana State Mineral Board be subsequently modified, cancelled or abrogated due to the existence of conflicting leases, operating agreements, private claims or other future obligations or conditions which may affect all or any portion of the leased Tract, it shall not relieve the Lessee of the obligation to pay any bonus due thereon to the Louisiana State Mineral Board, nor shall the Louisiana State Mineral Board be obligated to refund any consideration paid by the Lessor prior to such modification, cancellation, or abrogation, including, but not limited to, bonuses, rentals and royalties.





NOTE: The State of Louisiana does hereby reserve, and this lease shall be subject to, the imprescriptible right of surface use in the nature of a servitude in favor of the Department of Natural Resources, including its Offices and Commissions, for the sole purpose of implementing, constructing, servicing and maintaining approved coastal zone management and/or restoration projects. Utilization of any and all rights derived under this lease by the mineral lessee, its agents, successors or assigns, shall not interfere with nor hinder the reasonable surface use by the

Department of Natural Resources, its Offices or Commissions, as herein above reserved.

Applicant: COUBA PROPERTIES

Bidder	Cash Payment	Price/Acre	Rental	Oil	Gas	Other

Legend

-  06070026
-  Active_Leases
-  Counties
-  06070026_05_10_06

DOQQ2004



TRACT 38425 - Jefferson Parish, Louisiana

All of the lands now or formerly constituting the beds and bottoms of all water bodies of every nature and description the title of which vests in the State of Louisiana, together with all islands arising therein and other lands formed by accretion or by reliction, where allowed by law, excepting tax adjudicated lands, and not presently under mineral lease and cross hatched on July 12, 2006, situated in Jefferson Parish, Louisiana, and more particularly described as follows: Beginning at a point having Coordinates of X = 2,405,353.17 and Y = 345,529.79; Thence East 14,196.83 feet to a point having Coordinates of X = 2,419,550.00 and Y = 345,529.79; Thence South 10,350.00 feet to a point having Coordinates of X = 2,419,550.00 and Y = 335,179.79; Thence West 14,196.83 feet to a point having Coordinates of X = 2,405,353.17 and Y = 335,179.79; Thence North 10,350.00 feet to the point of beginning, **LESS AND EXCEPT** State Lease No. 356, as amended, containing approximately **15 acres**, all as more particularly outlined on a plat on file in the Office of Mineral Resources, Department of Natural Resources. All bearings, distances and coordinates are based on Louisiana Coordinate System of 1927, (North or South Zone), where applicable.

NOTE: The above description of the Tract nominated for lease has been provided and corrected, where required, exclusively by the nomination party. Any mineral lease selected from this Tract and awarded by the Louisiana State Mineral Board shall be without warranty of any kind, either express, implied, or statutory, including, but not limited to, the implied warranties of merchantability and fitness for a particular purpose. Should the mineral lease awarded by the Louisiana State Mineral Board be subsequently modified, cancelled or abrogated due to the existence of conflicting leases, operating agreements, private claims or other future obligations or conditions which may affect all or any portion of the leased Tract, it shall not relieve the Lessee of the obligation to pay any bonus due thereon to the Louisiana State Mineral Board, nor shall the Louisiana State Mineral Board be obligated to refund any consideration paid by the Lessor prior to such modification, cancellation, or abrogation, including, but not limited to, bonuses, rentals and royalties.

NOTE: The State of Louisiana does hereby reserve, and this lease shall be subject to, the imprescriptible right of surface use in the nature of a servitude in favor of the Department of Natural Resources, including its Offices and Commissions, for the sole purpose of implementing, constructing, servicing and maintaining approved coastal zone management and/or restoration projects. Utilization of any and all rights derived under this lease by the mineral lessee, its agents, successors or assigns, shall not interfere with nor hinder the reasonable surface use by the Department of Natural Resources, its Offices or Commissions, as herein above reserved.

Applicant: STONE ENERGY CORPORATION

Bidder	Cash Payment	Price/Acre	Rental	Oil	Gas	Other

Legend

- 06070042
- Active_Leases
- Counties
- 06070042_05_18_06

DOQQ2004



JEFFERSON PARISH

P.O.B.

BAYOU BARATARIA

UNNAMED

SL 356