

TRACT 38407 - Portion of Blocks 1, and 3, East Cameron Area, Revised, Cameron Parish, Louisiana

The beds and bottoms of all water bodies belonging to the State of Louisiana located in Blocks 1, and 3, East Cameron Area, Revised, together with any present lands formed by accretion to the shoreline or islands formed therein, located in Cameron Parish, Louisiana, owned by and not presently under mineral lease as of July 12, 2006, from the State of Louisiana, the geographical area of which is more fully described as follows: Beginning at a point on the East line of Block 3, East Cameron Area, Revised, having Coordinates of X = 1,493,033.33 and Y = 369,400.00; thence West 13,033.33 feet to a point on the West line of said Block 3 having Coordinates of X = 1,480,000.00 and Y = 369,400.00; thence North 5,358.05 feet along the West line of said Block 3 to a point on the South line of State Lease No. 1170, as amended, having Coordinates of X = 1,480,000.00 and Y = 374,758.05; thence along the boundary of said State Lease No. 1170, as amended, the following courses: East 3,364.65 feet to a point having Coordinates of X = 1,483,364.65 and Y = 374,758.05; North 33 degrees 11 minutes 15 seconds East 901.66 feet to a point having Coordinates of X = 1,483,858.20 and Y = 375,512.63; North 26 degrees 10 minutes 30 seconds East 1,007.15 feet to a point having Coordinates of X = 1,484,302.47 and Y = 376,416.50; North 17 degrees 54 minutes 22 seconds East 1,283.10 feet to a point having Coordinates of X = 1,484,696.97 and Y = 377,637.45; and North 825.07 feet to the most Southerly Southwest corner of State Lease No. 18598 having Coordinates of X = 1,484,696.97 and Y = 378,462.52; thence along the boundary of said State Lease No. 18598 the following courses: North 89 degrees 54 minutes 59 seconds East 1,702.03 feet to a point having Coordinates of X = 1,486,399.00 and Y = 378,465.00 and North 12 degrees 38 minutes 52 seconds West 2,837.97 feet to a point on the Coastline as per the Supreme Court Decree dated June 16, 1975, having Coordinates of X = 1,485,777.60 and Y = 381,234.10; thence along said Coastline the following courses: Southeasterly on a straight line to a point having Coordinates of X = 1,489,725.00 and Y = 379,370.00; Southeasterly on a straight line to a point having Coordinates of X = 1,492,040.00 and Y = 378,110.00; and Southeasterly on a straight line to the Northeast corner of said Block 3 having Coordinates of X = 1,493,033.33 and Y = 377,611.20; thence South 8,211.20 feet along the East line of said Block 3 to the Point of Beginning, **LESS AND EXCEPT** any portion of the Atchafalaya Delta Wildlife Management Area that may lie within the above described tract, containing **2,497.21 acres**, all as more particularly outlined on a plat on file in the Office of Mineral Resources, Department of Natural Resources. All bearings, distances and coordinates are based on Louisiana Coordinate System of 1927, (North or South Zone).

NOTE: The above description of the Tract nominated for lease has been provided and corrected, where required, exclusively by the nomination party. Any mineral lease selected from this Tract and awarded by the Louisiana State Mineral Board shall be without warranty of any kind, either express, implied, or statutory, including, but not limited to, the

implied warranties of merchantability and fitness for a particular purpose. Should the mineral lease awarded by the Louisiana State Mineral Board be subsequently modified, cancelled or abrogated due to the existence of conflicting leases, operating agreements, private claims or other future obligations or conditions which may affect all or any portion of the leased Tract, it shall not relieve the Lessee of the obligation to pay any bonus due thereon to the Louisiana State Mineral Board, nor shall the Louisiana State Mineral Board be obligated to refund any consideration paid by the Lessor prior to such modification, cancellation, or abrogation, including, but not limited to, bonuses, rentals and royalties.

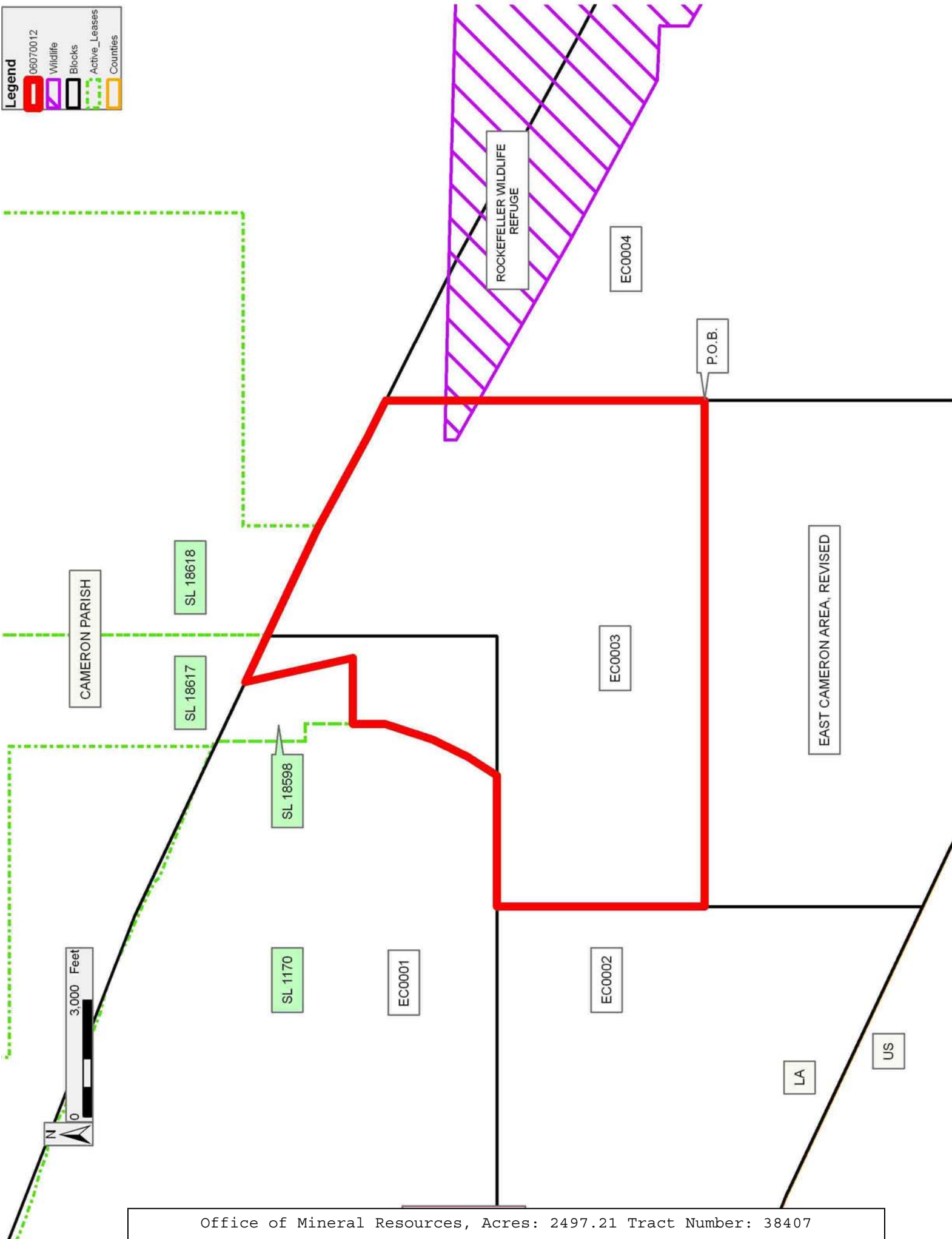
NOTE: The State of Louisiana does hereby reserve, and this lease shall be subject to, the imprescriptible right of surface use in the nature of a servitude in favor of the Department of Natural Resources, including its Offices and Commissions, for the sole purpose of implementing, constructing, servicing and maintaining approved coastal zone management and/or restoration projects. Utilization of any and all rights derived under this lease by the mineral lessee, its agents, successors or assigns, shall not interfere with nor hinder the reasonable surface use by the Department of Natural Resources, its Offices or Commissions, as herein above reserved.

Applicant: MOUTON LAND SERVICES

Bidder	Cash Payment	Price/ Acre	Rental	Oil	Gas	Other

Legend

- 06070012
- Wildlife
- Blocks
- Active_Leases
- Counties



TRACT 38408 - Portion of Block 33, West Cameron Area, Revised, Cameron Parish, Louisiana

The beds and bottoms of all water bodies belonging to the State of Louisiana located in Block 33, West Cameron Area, Revised, together with any present lands formed by accretion to the shoreline or islands formed therein, located in Cameron Parish, Louisiana, owned by and not presently under mineral lease and cross hatched as of July 12, 2006, from the State of Louisiana, the geographical area of which is more fully described as follows: Beginning at the Northwest corner of Block 33, West Cameron Area, Revised, having Coordinates of X = 1,450,483.90 and Y = 379,032.19; thence East 14,758.05 feet along the North line of said Block 33 to its Northeast corner having Coordinates of X = 1,465,241.95 and Y = 379,032.19; thence South 4,656.19 feet along the East line of said Block 33 to the most Northern corner of State Lease No. 16473, as amended, having Coordinates of X = 1,465,241.95 and Y = 374,376.00; thence along the boundary of said State Lease No. 16473, as amended, the following courses: South 87 degrees 15 minutes 46 seconds West 251.28 feet; South 86 degrees 07 minutes 04 seconds West 280.63 feet; South 74 degrees 54 minutes 21 seconds West 249.61 feet; South 66 degrees 51 minutes 38 seconds West 254.47 feet; South 56 degrees 35 minutes 16 seconds West 228.82 feet; South 52 degrees 01 minutes 06 seconds West 329.86 feet; South 50 degrees 16 minutes 34 seconds West 269.13 feet; South 46 degrees 06 minutes 17 seconds West 256.73 feet; South 43 degrees 43 minutes 37 seconds West 350.10 feet; South 45 degrees 20 minutes 35 seconds West 354.27 feet; South 45 degrees 59 minutes 23 seconds West 368.46 feet; South 46 degrees 52 minutes 28 seconds West 389.12 feet; South 52 degrees 05 minutes 28 seconds West 286.46 feet; South 52 degrees 25 minutes 49 seconds West 295.21 feet; South 52 degrees 59 minutes 32 seconds West 249.20 feet; South 58 degrees 00 minutes 56 seconds West 288.85 feet; South 67 degrees 19 minutes 28 seconds East 1,193.22 feet; North 46 degrees 59 minutes 32 seconds East 162.73 feet; North 64 degrees 05 minutes 09 seconds East 157.89 feet; North 73 degrees 03 minutes 29 seconds East 339.73 feet; North 78 degrees 26 minutes 24 seconds East 269.47 feet; North 84 degrees 24 minutes 47 seconds East 277.33 feet; North 89 degrees 16 minutes 13 seconds East 314.03 feet; South 87 degrees 19 minutes 44 seconds East 493.55 feet; South 84 degrees 14 minutes 50 seconds East 269.36 feet; South 78 degrees 49 minutes 47 seconds East 237.50 feet; and North 71 degrees 04 minutes 00 seconds East 275.90 feet to a point on the East line of said Block 33 having Coordinates of X = 1,465,241.95 and Y = 371,715.51; thence South 1,563.69 feet along the East line of said Block 33 to a point on the Three Mile Decree line derived from the June 16, 1975 Decree in the United States vs. Louisiana No. 9 Original, having Coordinates of X = 1,465,241.95 and Y = 370,151.82; thence along said Three Mile Decree line the following courses: Northwesterly on a straight line to a point having Coordinates of X = 1,464,632.00 and Y = 370,389.00; along an arc with a radius of 18,240.60 feet and a center of X = 1,471,240.00 and Y = 387,390.00 to a point having Coordinates of X = 1,464,433.00 and Y = 370,467.00; Northwesterly on a straight line to a point having Coordinates of X = 1,461,367.00 and Y = 371,700.00; Northwesterly on a straight line

to a point having Coordinates of X = 1,455,041.00 and Y = 373,829.00; and Northwesterly on a straight line to a point on the West line of said Block 33 having Coordinates of X = 1,450,483.90 and Y = 375,118.34; thence North 3,913.86 feet along the West line of said Block 33 to the Point of Beginning, containing **1,961.07 acres, LESS AND EXCEPT** that portion thereof, if any, lying seaward of the line three nautical miles from the coast line of Louisiana, as said three mile line has been decreed by the Supreme Court of the United States, as determined by a Special Master appointed therein, in litigation styled **United States v. State of Louisiana et al No. 9 Original**, in 1975, all as more particularly outlined on a plat in the Office of Mineral Resources, Department of Natural Resources. All bearings, distances and coordinates are based on the Louisiana Coordinate System of 1927, (South Zone).

NOTE: The above description of the Tract nominated for lease has been provided and corrected, where required, exclusively by the nomination party. Any mineral lease selected from this Tract and awarded by the Louisiana State Mineral Board shall be without warranty of any kind, either express, implied, or statutory, including, but not limited to, the implied warranties of merchantability and fitness for a particular purpose. Should the mineral lease awarded by the Louisiana State Mineral Board be subsequently modified, cancelled or abrogated due to the existence of conflicting leases, operating agreements, private claims or other future obligations or conditions which may affect all or any portion of the leased Tract, it shall not relieve the Lessee of the obligation to pay any bonus due thereon to the Louisiana State Mineral Board, nor shall the Louisiana State Mineral Board be obligated to refund any consideration paid by the Lessor prior to such modification, cancellation, or abrogation, including, but not limited to, bonuses, rentals and royalties.

NOTE: The State of Louisiana does hereby reserve, and this lease shall be subject to, the imprescriptible right of surface use in the nature of a servitude in favor of the Department of Natural Resources, including its Offices and Commissions, for the sole purpose of implementing, constructing, servicing and maintaining approved coastal zone management and/or restoration projects. Utilization of any and all rights derived under this lease by the mineral lessee, its agents, successors or assigns, shall not interfere with nor hinder the reasonable surface use by the Department of Natural Resources, its Offices or Commissions, as herein above reserved.

Applicant: MOUTON LAND SERVICES

Bidder	Cash Payment	Price/ Acre	Rental	Oil	Gas	Other

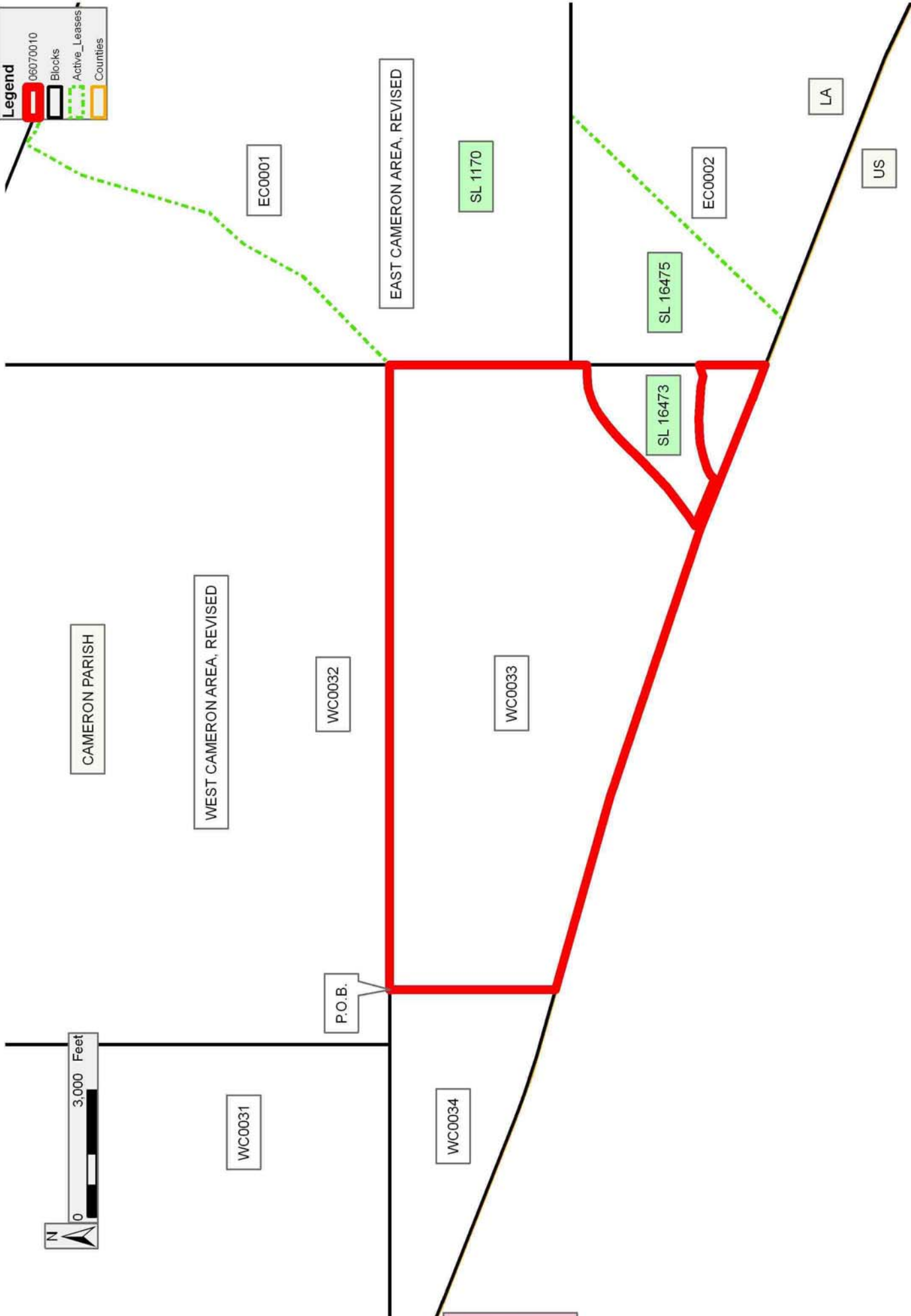
Legend

06070010

Blocks

Active_Leases

Counties



TRACT 38409 - Portion of Block 2, East Cameron Area, Revised, Cameron Parish, Louisiana

The beds and bottoms of all water bodies belonging to the State of Louisiana located in Block 2, East Cameron Area, Revised, together with any present lands formed by accretion to the shoreline or islands formed therein, located in Cameron Parish, Louisiana, owned by and not presently under mineral lease and cross hatched as of July 12, 2006, from the State of Louisiana, the geographical area of which is more fully described as follows: Beginning at the Northeast corner of Block 2, East Cameron Area, Revised, having Coordinates of X = 1,480,000.00 and Y = 374,758.05; thence South 10,967.81 feet along the East line of said Block 2 to a point on the Three Mile Decree line derived from the June 16, 1975 Decree in the United States vs. Louisiana No. 9 Original, having Coordinates of X = 1,480,000.00 and Y = 363,790.23; thence along said Three Mile Decree line the following courses: Northwesterly on a straight line to a point having Coordinates of X = 1,472,522.00 and Y = 367,321.00 and Northwesterly on a straight line to the Southeast corner of State Lease No. 16475 having Coordinates of X = 1,466,313.77 and Y = 369,735.05; thence North 43 degrees 52 minutes 01 seconds East 1,579.01 feet along the Eastern boundary of said State Lease No. 16475 to the Southwest corner of State Lease No. 18121 having Coordinates of X = 1,467,408.01 and Y = 370,873.44; thence along the boundary of said State Lease No. 18121 the following courses: East 4,333.94 feet to a point having Coordinates of X = 1,471,741.95 and Y = 370,873.44 and North 3,884.61 feet to its Northeast corner, said corner also being a point on the North line of said Block 2, having Coordinates of X = 1,471,741.95 and Y = 374,758.05; thence East 8,258.05 feet along the North line of said Block 2 to the Point of Beginning, containing **1,969.33 acres, LESS AND EXCEPT** that portion thereof, if any, lying seaward of the line three nautical miles from the coast line of Louisiana, as said three mile line has been decreed by the Supreme Court of the United States, as determined by a Special Master appointed therein, in litigation styled **United States v. State of Louisiana et al No. 9 Original**, in 1975, all as more particularly outlined on a plat in the Office of Mineral Resources, Department of Natural Resources. All bearings, distances and coordinates are based on the Louisiana Coordinate System of 1927, (South Zone).

NOTE: The above description of the Tract nominated for lease has been provided and corrected, where required, exclusively by the nomination party. Any mineral lease selected from this Tract and awarded by the Louisiana State Mineral Board shall be without warranty of any kind, either express, implied, or statutory, including, but not limited to, the implied warranties of merchantability and fitness for a particular purpose. Should the mineral lease awarded by the Louisiana State Mineral Board be subsequently modified, cancelled or abrogated due to the existence of conflicting leases, operating agreements, private claims or other future obligations or conditions which may affect all or any portion of the leased Tract, it shall not relieve the Lessee of the obligation to pay any bonus due thereon to the Louisiana State Mineral Board, nor shall

the Louisiana State Mineral Board be obligated to refund any consideration paid by the Lessor prior to such modification, cancellation, or abrogation, including, but not limited to, bonuses, rentals and royalties.

NOTE: The State of Louisiana does hereby reserve, and this lease shall be subject to, the imprescriptible right of surface use in the nature of a servitude in favor of the Department of Natural Resources, including its Offices and Commissions, for the sole purpose of implementing, constructing, servicing and maintaining approved coastal zone management and/or restoration projects. Utilization of any and all rights derived under this lease by the mineral lessee, its agents, successors or assigns, shall not interfere with nor hinder the reasonable surface use by the Department of Natural Resources, its Offices or Commissions, as herein above reserved.

Applicant: MOUTON LAND SERVICES

Bidder	Cash Payment	Price/ Acre	Rental	Oil	Gas	Other

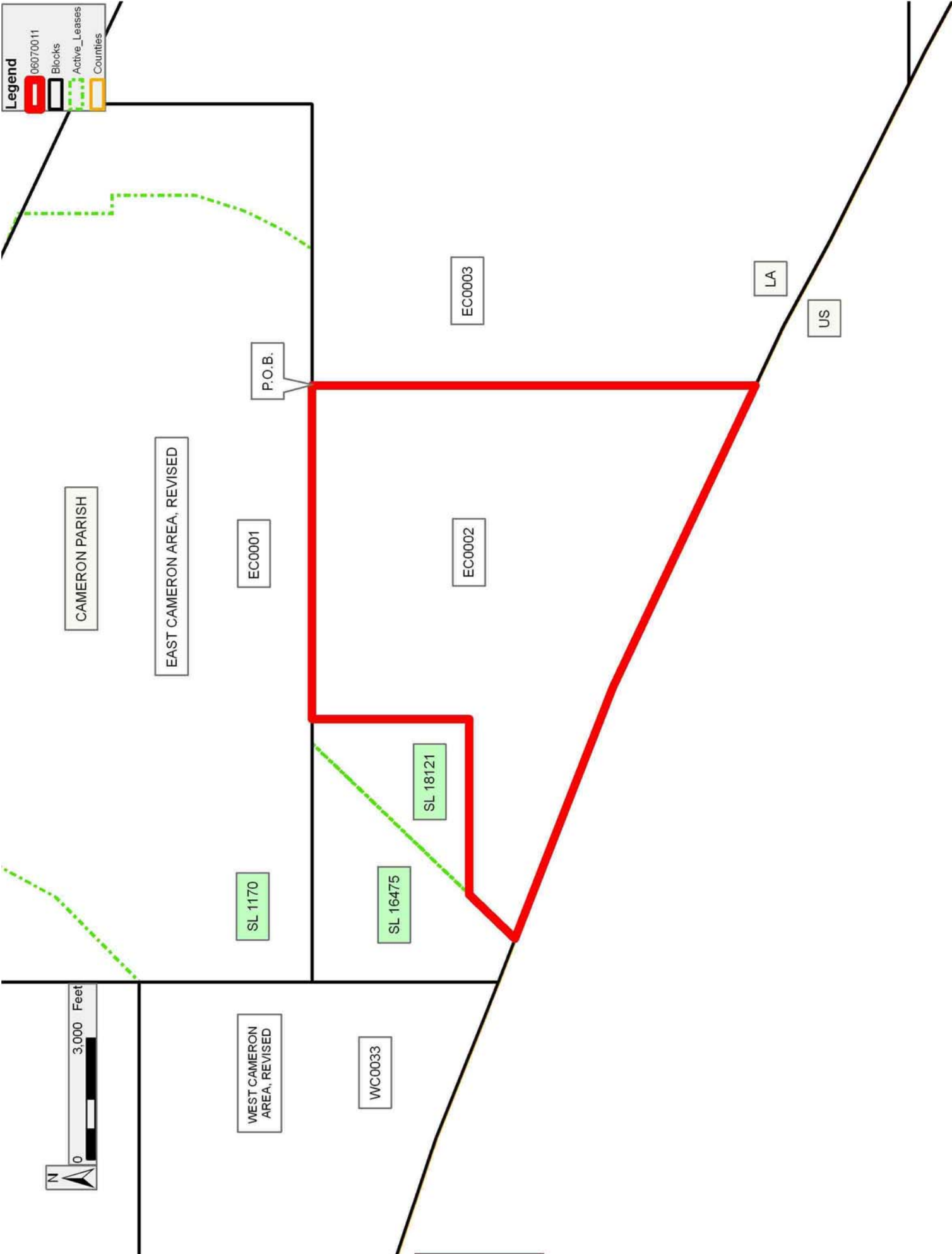
Legend

06070011

Blocks

Active_Leases

Counties



TRACT 38410 - Portion of Block 3, East Cameron Area, Revised, Cameron Parish, Louisiana

The beds and bottoms of all water bodies belonging to the State of Louisiana located in Block 3, East Cameron Area, Revised, together with any present lands formed by accretion to the shoreline or islands formed therein, located in Cameron Parish, Louisiana, owned by and not presently under mineral lease and cross hatched as of July 12, 2006, from the State of Louisiana, the geographical area of which is more fully described as follows: Beginning at a point on the East line of Block 3, East Cameron Area, Revised, having Coordinates of X = 1,493,033.33 and Y = 369,400.00; thence South 9,400.00 feet along the East line of said Block 3 to its Southeast corner having Coordinates of X = 1,493,033.33 and Y = 360,000.00; thence West 5,575.94 feet along the South line of said Block 3 to a point on the Three Mile Decree line derived from the June 16, 1975 Decree in the United States vs. Louisiana No. 9 Original, having Coordinates of X = 1,487,457.39 and Y = 360,000.00; thence along said Three Mile Decree line the following courses: Northwesterly on a straight line to a point having Coordinates of X = 1,483,855.00 and Y = 361,809.00; along an arc with a radius of 18,240.60 feet and a center of X = 1,492,040.00 and Y = 378,110.00 to a point having Coordinates of X = 1,483,320.00 and Y = 362,089.00; Northwesterly on a straight line to a point having Coordinates of X = 1,481,464.00 and Y = 363,099.00; and Northwesterly on a straight line to a point on the West line of said Block 3 having Coordinates of X = 1,480,000.00 and Y = 363,790.23; thence North 5,609.77 feet along the West line of said Block 3 to a point having Coordinates of X = 1,480,000.00 and Y = 369,400.00; thence East 13,033.33 feet to the Point of Beginning, containing **2,487.51 acres, LESS AND EXCEPT** that portion thereof, if any, lying seaward of the line three nautical miles from the coast line of Louisiana, as said three mile line has been decreed by the Supreme Court of the United States, as determined by a Special Master appointed therein, in litigation styled **United States v. State of Louisiana et al No. 9 Original**, in 1975, all as more particularly outlined on a plat in the Office of Mineral Resources, Department of Natural Resources. All bearings, distances and coordinates are based on the Louisiana Coordinate System of 1927, (South Zone).

NOTE: The above description of the Tract nominated for lease has been provided and corrected, where required, exclusively by the nomination party. Any mineral lease selected from this Tract and awarded by the Louisiana State Mineral Board shall be without warranty of any kind, either express, implied, or statutory, including, but not limited to, the implied warranties of merchantability and fitness for a particular purpose. Should the mineral lease awarded by the Louisiana State Mineral Board be subsequently modified, cancelled or abrogated due to the existence of conflicting leases, operating agreements, private claims or other future obligations or conditions which may affect all or any portion of the leased Tract, it shall not relieve the Lessee of the obligation to pay any bonus due thereon to the Louisiana State Mineral Board, nor shall the Louisiana State Mineral Board be obligated to refund any consideration

paid by the Lessor prior to such modification, cancellation, or abrogation, including, but not limited to, bonuses, rentals and royalties.

NOTE: The State of Louisiana does hereby reserve, and this lease shall be subject to, the imprescriptible right of surface use in the nature of a servitude in favor of the Department of Natural Resources, including its Offices and Commissions, for the sole purpose of implementing, constructing, servicing and maintaining approved coastal zone management and/or restoration projects. Utilization of any and all rights derived under this lease by the mineral lessee, its agents, successors or assigns, shall not interfere with nor hinder the reasonable surface use by the Department of Natural Resources, its Offices or Commissions, as herein above reserved.

Applicant: MOUTON LAND SERVICES

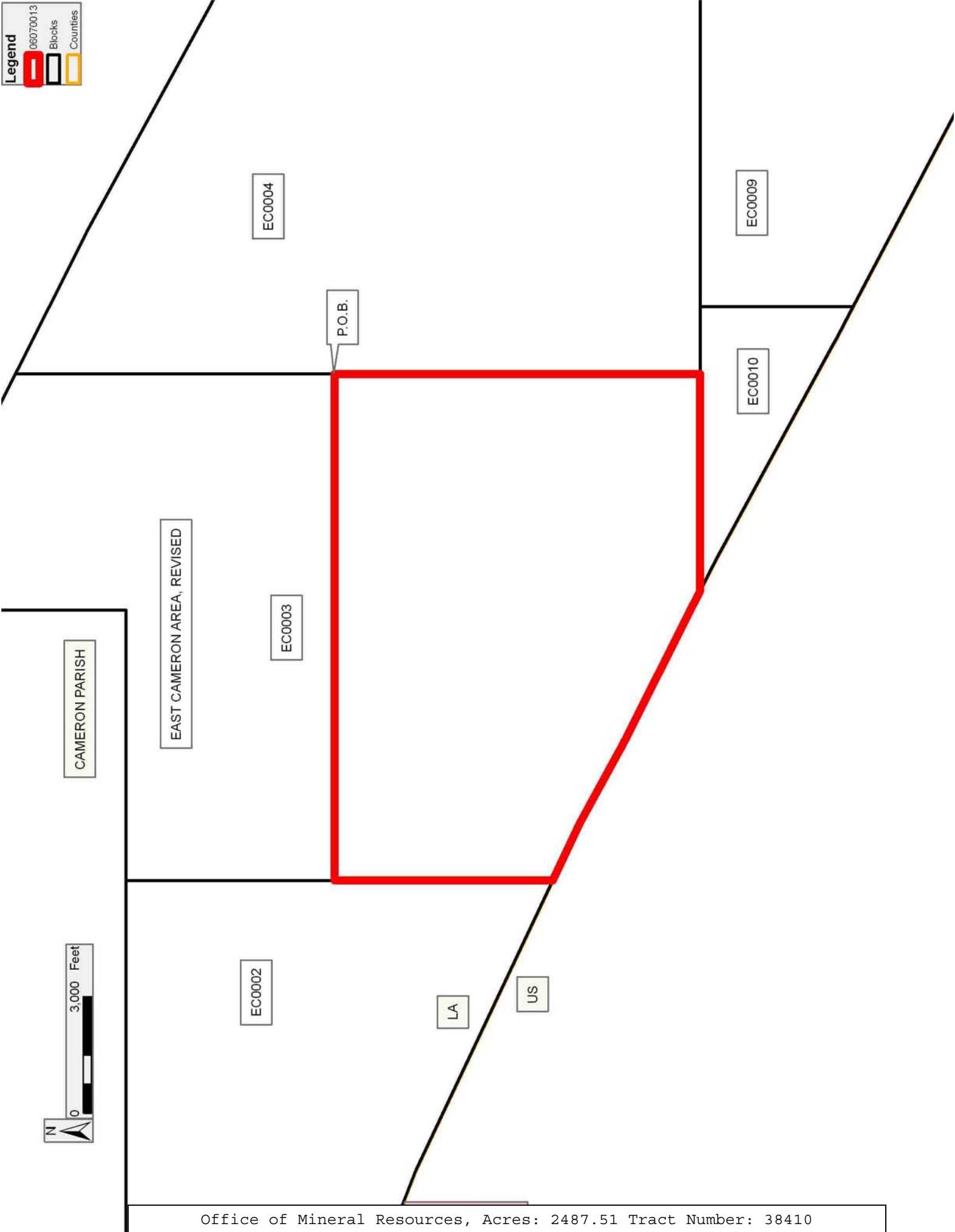
Bidder	Cash Payment	Price/ Acre	Rental	Oil	Gas	Other

Legend

06070013

Blocks

Counties



TRACT 38411 - Portion of Block 17, Eugene Island Area, Revised, St. Mary Parish, Louisiana

The beds and bottoms of all water bodies belonging to the State of Louisiana located in Block 17, Eugene Island Area, Revised, together with any present lands formed by accretion to the shoreline or islands formed therein, located in St. Mary Parish, Louisiana, owned by and not presently under mineral lease as of July 12, 2006, from the State of Louisiana, the geographical area of which is more fully described as follows: Beginning at the Southeast corner of Block 17, Eugene Island Area, Revised, having Coordinates of X = 1,969,955.68 and Y = 240,895.42; thence West 5,722.16 feet along the South line of said Block 17 to the most Southerly Southeast corner of State Lease No. 18501 having Coordinates of X = 1,964,233.52 and Y = 240,895.42; thence along the boundary of said State Lease No. 18501 the following courses: North 1,900.00 feet, North 46 degrees 18 minutes 42 seconds West 7,744.35 feet and West 150.00 feet to a point on its North line, also being the most Southerly Southeast corner of State Lease No. 16988 having Coordinates of X = 1,958,483.52 and Y = 248,144.71; thence along the boundary of said State Lease No. 16988 the following courses: North 550.00 feet, East 3,461.08 feet and North 1,227.24 feet to its most Northerly Northeast corner, also being a point on the Eastern boundary of State Lease No. 7870, As Amended having Coordinates of X = 1,961,944.60 and Y = 249,921.95; thence along the boundary of said State Lease No. 7870 the following courses: North 41 degrees 23 minutes 30 seconds East 703.87 feet, North 47 degrees 38 minutes 16 seconds East 46.83 feet, North 47 degrees 38 minutes 33 seconds East 413.29 feet, North 51 degrees 20 minutes 25 seconds East 320.16 feet, North 51 degrees 32 minutes 47 seconds East 434.17 feet, North 55 degrees 07 minutes 29 seconds East 402.24 feet, North 62 degrees 44 minutes 41 seconds East 371.21 feet and North 36 degrees 01 minutes 39 seconds East 565.98 feet to a point having Coordinates of X = 1,964,332.90 and Y = 252,087.73; thence Southeasterly on a straight line to a point on the East line of said Block 17 having Coordinates of X = 1,969,955.68 and Y = 250,124.15; thence South 9,228.73 feet along the East line of said Block 17 to the point of beginning, containing approximately **1,880.09 acres**, all as more particularly outlined on a plat on file in the Office of Mineral Resources, Department of Natural Resources. All bearings, distances and coordinates are based on Louisiana Coordinate System of 1927, (North or South Zone).

NOTE: The above description of the Tract nominated for lease has been provided and corrected, where required, exclusively by the nomination party. Any mineral lease selected from this Tract and awarded by the Louisiana State Mineral Board shall be without warranty of any kind, either express, implied, or statutory, including, but not limited to, the implied warranties of merchantability and fitness for a particular purpose. Should the mineral lease awarded by the Louisiana State Mineral Board be subsequently modified, cancelled or abrogated due to the existence of conflicting leases, operating agreements, private claims or other future obligations or conditions which may affect all or any portion of the leased Tract, it shall not relieve the Lessee of the obligation to

pay any bonus due thereon to the Louisiana State Mineral Board, nor shall the Louisiana State Mineral Board be obligated to refund any consideration paid by the Lessor prior to such modification, cancellation, or abrogation, including, but not limited to, bonuses, rentals and royalties.

NOTE: The above described tract may be in the vicinity of existing shell reefs where drilling and dredging operations must be conducted in strict conformity with the regulations adopted by the Louisiana Department of Wildlife and Fisheries and/or the U.S. Corps of Engineers, U.S. Army.

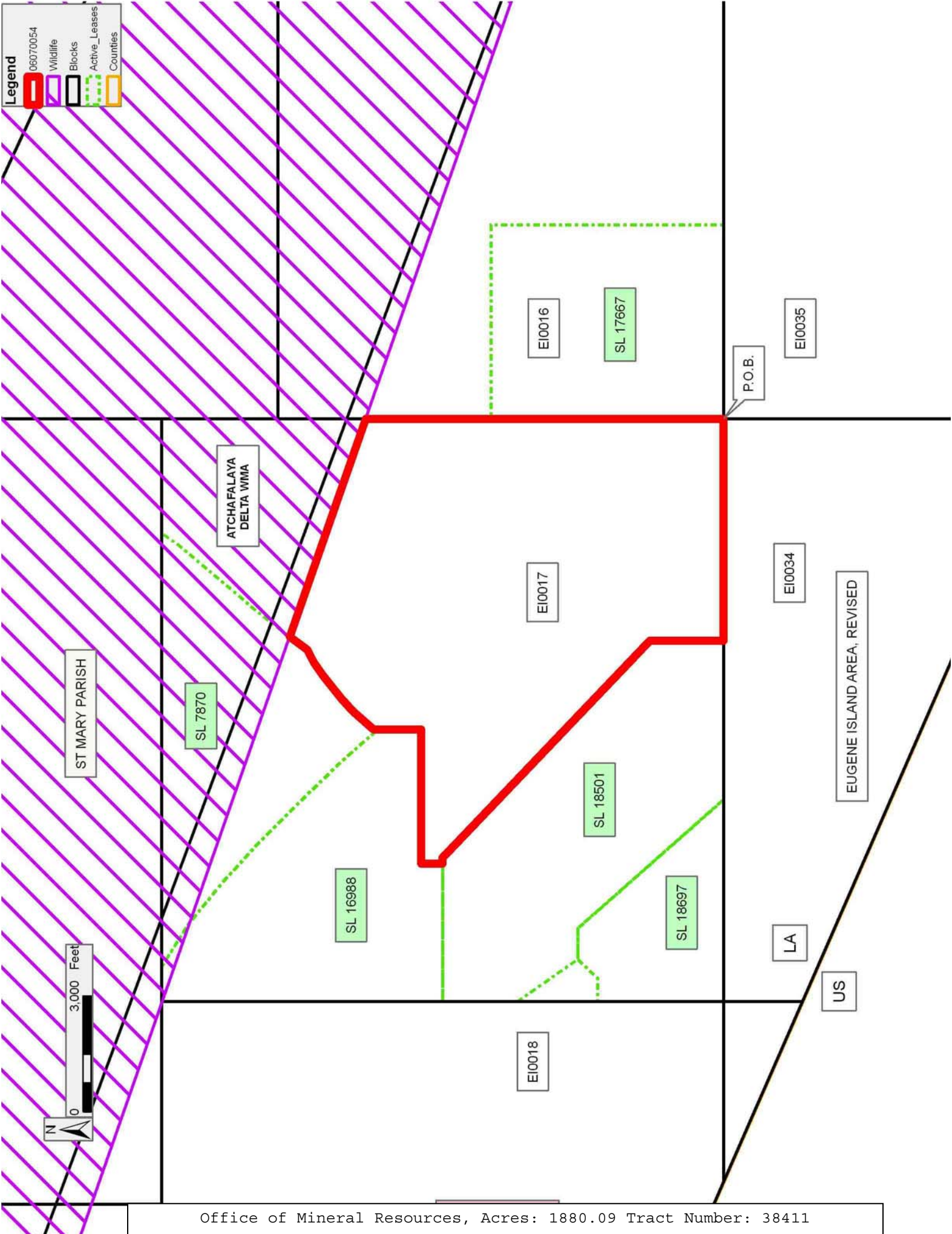
NOTE: The State of Louisiana does hereby reserve, and this lease shall be subject to, the imprescriptible right of surface use in the nature of a servitude in favor of the Department of Natural Resources, including its Offices and Commissions, for the sole purpose of implementing, constructing, servicing and maintaining approved coastal zone management and/or restoration projects. Utilization of any and all rights derived under this lease by the mineral lessee, its agents, successors or assigns, shall not interfere with nor hinder the reasonable surface use by the Department of Natural Resources, its Offices or Commissions, as herein above reserved.

NOTE: It appears, according to our records, that a portion of this Tract is located within the restrictive safety fairway area as set out by the Corps of Engineers, U.S. Army and/or the restrictive anchorage area as set out by the U.S. Coast Guard.

NOTE: The Department of Wildlife and Fisheries has designated certain areas in the coastal waters of the State of Louisiana as Oyster Seed Bed Areas. The exact location of those Seed Bed Areas must be obtained from the Department of Wildlife and Fisheries and any work done under a mineral lease from the State of Louisiana may necessarily be conducted in conformity with the rules and regulations promulgated by the said Department of Wildlife and Fisheries for Oyster Seed Bed Areas.

Applicant: PATRICK L. DONOHUE PETROLEUM PROPERTIES, INC.

Bidder	Cash Payment	Price/ Acre	Rental	Oil	Gas	Other



TRACT 38412 - Portion of Block 16, Eugene Island Area, Revised, St. Mary Parish, Louisiana

The beds and bottoms of all water bodies belonging to the State of Louisiana located in Block 16, Eugene Island Area, Revised, together with any present lands formed by accretion to the shoreline or islands formed therein, located in St. Mary Parish, Louisiana, owned by and not presently under mineral lease as of July 12, 2006, from the State of Louisiana, the geographical area of which is more fully described as follows: Beginning at a point on the Atchafalaya Delta Wildlife Management Area boundary, said point also being on the common boundary line between Block 16, Eugene Island Area, Revised, and Block 17, Eugene Island Area, Revised having Coordinates of X = 1,969,955.68 and Y = 250,124.15; thence South 70 degrees 45 minutes 00 seconds East 5,296.11 feet along said Atchafalaya Delta Wildlife Management Area boundary to a point having Coordinates of X = 1,974,955.68 and Y = 248,378.07; thence South 1,482.65 feet to the Northeast corner of State Lease No. 17667 having Coordinates of X = 1,974,955.68 and Y = 246,895.42; thence West 5,000.00 feet along the North line of said State Lease No. 17667 to its Northwest corner, said corner also being the common boundary line between said Block 16 and said Block 17, having Coordinates of X = 1,969,955.68 and Y = 246,895.42; thence North 3,228.73 feet along the common boundary line between said Block 16 and said Block 17 to the Point of Beginning, **LESS AND EXCEPT** any portion of the Atchafalaya Delta Wildlife Management Area that may lie within the above described tract, containing **270.39 acres**, all as more particularly outlined on a plat on file in the Office of Mineral Resources, Department of Natural Resources. All bearings, distances and coordinates are based on Louisiana Coordinate System of 1927, (North or South Zone).

NOTE: The above description of the Tract nominated for lease has been provided and corrected, where required, exclusively by the nomination party. Any mineral lease selected from this Tract and awarded by the Louisiana State Mineral Board shall be without warranty of any kind, either express, implied, or statutory, including, but not limited to, the implied warranties of merchantability and fitness for a particular purpose. Should the mineral lease awarded by the Louisiana State Mineral Board be subsequently modified, cancelled or abrogated due to the existence of conflicting leases, operating agreements, private claims or other future obligations or conditions which may affect all or any portion of the leased Tract, it shall not relieve the Lessee of the obligation to pay any bonus due thereon to the Louisiana State Mineral Board, nor shall the Louisiana State Mineral Board be obligated to refund any consideration paid by the Lessor prior to such modification, cancellation, or abrogation, including, but not limited to, bonuses, rentals and royalties.

NOTE: The above described tract may be in the vicinity of existing shell reefs where drilling and dredging operations must be conducted in strict conformity with the regulations adopted by the Louisiana Department of Wildlife and Fisheries and/or the U.S. Corps of Engineers, U.S. Army.

NOTE: The State of Louisiana does hereby reserve, and this lease shall be subject to, the imprescriptible right of surface use in the nature of a servitude in favor of the Department of Natural Resources, including its Offices and Commissions, for the sole purpose of implementing, constructing, servicing and maintaining approved coastal zone management and/or restoration projects. Utilization of any and all rights derived under this lease by the mineral lessee, its agents, successors or assigns, shall not interfere with nor hinder the reasonable surface use by the Department of Natural Resources, its Offices or Commissions, as herein above reserved.

NOTE: It appears, according to our records, that a portion of this Tract is located within the restrictive safety fairway area as set out by the Corps of Engineers, U.S. Army and/or the restrictive anchorage area as set out by the U.S. Coast Guard.

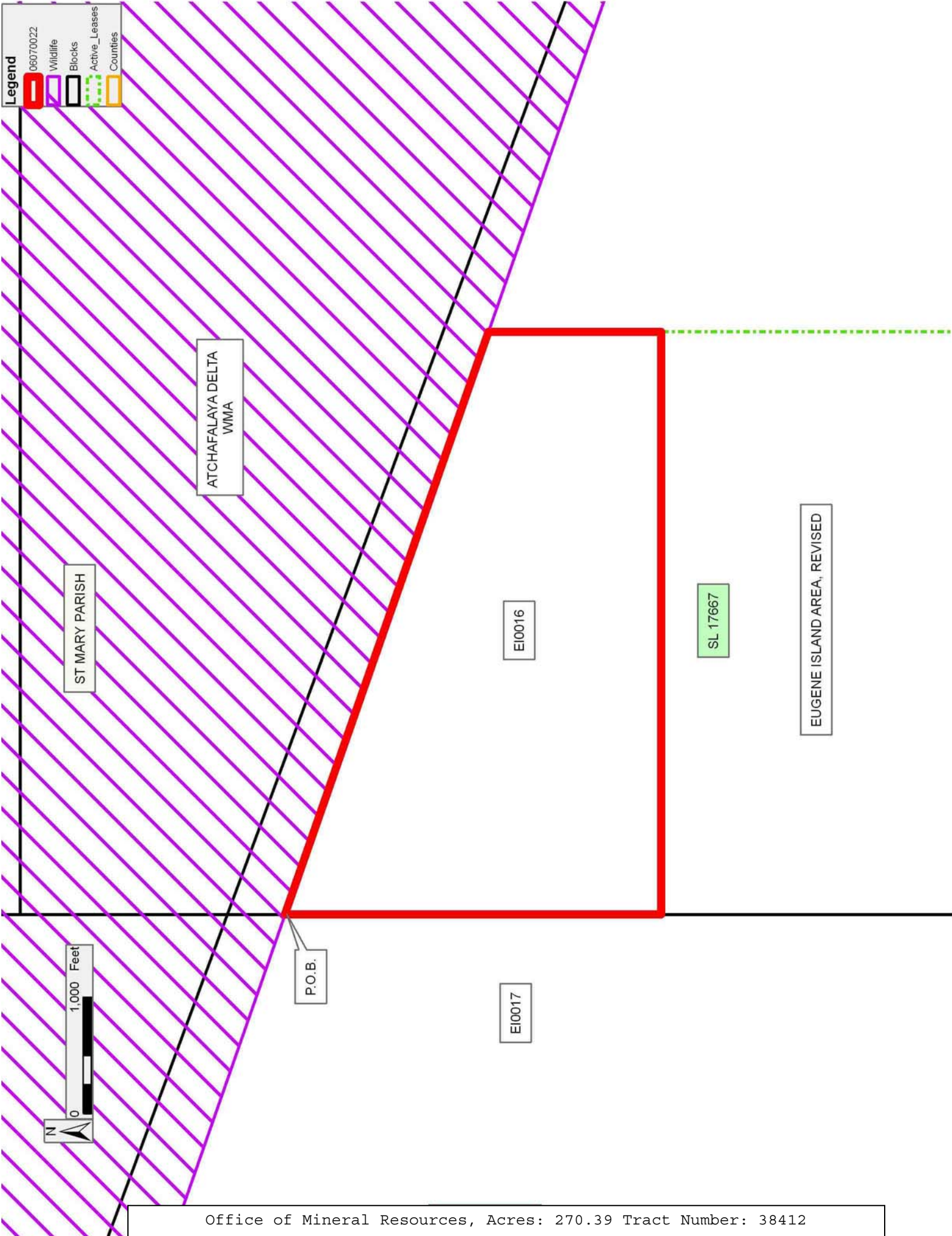
NOTE: The Department of Wildlife and Fisheries has designated certain areas in the coastal waters of the State of Louisiana as Oyster Seed Bed Areas. The exact location of those Seed Bed Areas must be obtained from the Department of Wildlife and Fisheries and any work done under a mineral lease from the State of Louisiana may necessarily be conducted in conformity with the rules and regulations promulgated by the said Department of Wildlife and Fisheries for Oyster Seed Bed Areas.

Applicant: J. ORUM ENERGY GROUP

Bidder	Cash Payment	Price/ Acre	Rental	Oil	Gas	Other

Legend

- 06070022
- Wildlife
- Blocks
- Active_Leases
- Counties



TRACT 38413 - Portion of Blocks 70, and 71, Main Pass Area, Revised, Plaquemines Parish, Louisiana

The beds and bottoms of all water bodies belonging to the State of Louisiana located in Blocks 70, and 71, Main Pass Area, Revised, together with any present lands formed by accretion to the shoreline or islands formed therein, located in Plaquemines Parish, Louisiana, owned by and not presently under mineral lease as of July 12, 2006, from the State of Louisiana, the geographical area of which is more fully described as follows: Beginning at a point in Block 70, Main Pass Area, Revised, also being the Southeast corner of State Lease No. 17815 having Coordinates of X = 2,745,977.50 and Y = 218,325.00; thence North 2,319.35 feet along the East boundary of said State Lease No. 17815 to a point having Coordinates of X = 2,745,977.50 and Y = 220,644.35; thence East 15,802.50 feet to a point on the East line of Block 71, Main Pass Area, Revised, also being a point on the West boundary of State Lease No. 6894 having Coordinates of X = 2,761,780.00 and Y = 220,644.35; thence South 5,672.35 feet along the East line of said Block 71 and the West boundary of said State Lease No. 6894 to its Southwest corner having Coordinates of X = 2,761,780.00 and Y = 214,972.00; thence West 72.00 feet along the South line of said Block 71 to the Northeast corner of State Lease No. 15386, as amended, having Coordinates of X = 2,761,708.00 and Y = 214,972.00; thence West 4,729.00 feet along the South line of said Block 71 and the North boundary of said State Lease No. 15386 to its Northwest corner having Coordinates of X = 2,756,979.00 and Y = 214,972.00; thence West 13,679.00 feet along the South line of said Block 71 through its Southwest corner into said Block 70 along its South line to a point having Coordinates of X = 2,743,300.00 and Y = 214,972.00; thence North 3,353.00 feet to a point on the South boundary of said State Lease No. 17815 having Coordinates of X = 2,743,300.00 and Y = 218,325.00; thence East 2,677.50 feet along the South boundary of said State Lease No. 17815 to the point of beginning, containing approximately **2,263.89 acres**, all as more particularly outlined on a plat on file in the Office of Mineral Resources, Department of Natural Resources. All bearings, distances and coordinates are based on Louisiana Coordinate System of 1927, (North or South Zone).

NOTE: The above description of the Tract nominated for lease has been provided and corrected, where required, exclusively by the nomination party. Any mineral lease selected from this Tract and awarded by the Louisiana State Mineral Board shall be without warranty of any kind, either express, implied, or statutory, including, but not limited to, the implied warranties of merchantability and fitness for a particular purpose. Should the mineral lease awarded by the Louisiana State Mineral Board be subsequently modified, cancelled or abrogated due to the existence of conflicting leases, operating agreements, private claims or other future obligations or conditions which may affect all or any portion of the leased Tract, it shall not relieve the Lessee of the obligation to pay any bonus due thereon to the Louisiana State Mineral Board, nor shall the Louisiana State Mineral Board be obligated to refund any consideration

paid by the Lessor prior to such modification, cancellation, or abrogation, including, but not limited to, bonuses, rentals and royalties.

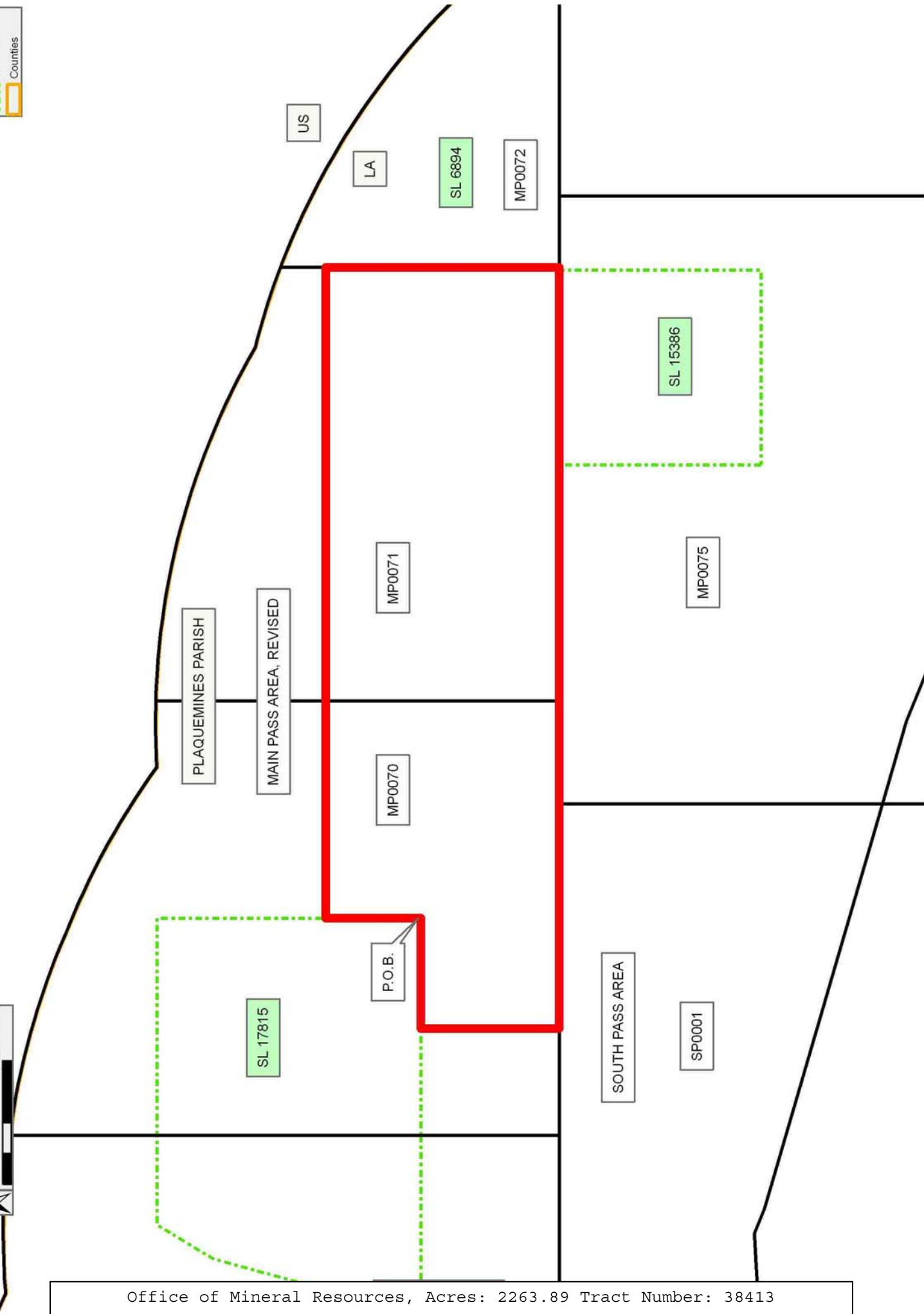
NOTE: The State of Louisiana does hereby reserve, and this lease shall be subject to, the imprescriptible right of surface use in the nature of a servitude in favor of the Department of Natural Resources, including its Offices and Commissions, for the sole purpose of implementing, constructing, servicing and maintaining approved coastal zone management and/or restoration projects. Utilization of any and all rights derived under this lease by the mineral lessee, its agents, successors or assigns, shall not interfere with nor hinder the reasonable surface use by the Department of Natural Resources, its Offices or Commissions, as herein above reserved.

Applicant: LESLIE M. COOPER

Bidder	Cash Payment	Price/ Acre	Rental	Oil	Gas	Other

Legend

- 06070002
- Blocks
- Active_Leases
- Counties



TRACT 38414 - Portion of Block 75, Main Pass Area, Revised, and Block 1, South Pass Area, Plaquemines Parish, Louisiana

The beds and bottoms of all water bodies belonging to the State of Louisiana located in Block 75, Main Pass Area, Revised, and Block 1, South Pass Area, together with any present lands formed by accretion to the shoreline or islands formed therein, located in Plaquemines Parish, Louisiana, owned by and not presently under mineral lease as of July 12, 2006, from the State of Louisiana, the geographical area of which is more fully described as follows: Beginning at a point on the North line of Block 75, Main Pass Area, Revised, also being the Northwest corner of State Lease No. 15386, as amended, having Coordinates of X = 2,756,979.00 and Y = 214,972.00; thence along the boundary of said State Lease No. 15386 the following courses and distances: South 4,901.67 feet to a point having Coordinates of X = 2,756,979.00 and Y = 210,070.33 and East 4,729.00 feet to its Southeast corner having Coordinates of X = 2,761,708.00 and Y = 210,070.33; thence South 396.64 feet to a point on the North boundary of State Lease No. 8690, as amended, having Coordinates of X = 2,761,708.00 and Y = 209,673.69; thence along the boundary of said State Lease No. 8690 the following courses and distances: South 60 degrees 44 minutes 06 seconds West 566.75 feet, South 66 degrees 15 minutes 38 seconds West 267.35 feet, South 63 degrees 03 minutes 37 seconds West 1,210.89 feet, South 69 degrees 59 minutes 10 seconds West 2,426.80 feet, South 75 degrees 47 minutes 13 seconds West 514.48 feet, South 64 degrees 13 minutes 34 seconds West 179.73 feet, South 78 degrees 11 minutes 39 seconds West 225.47 feet and South 65 degrees 37 minutes 50 seconds West 160.53 feet to a point having Coordinates of X = 2,756,581.61 and Y = 207,593.00; thence West 9,461.03 feet through the West line of said Block 75 into Block 1, South Pass Area to a point on the Shoreline having Coordinates of X = 2,747,120.59 and Y = 207,593.00; thence Northwesterly along said Shoreline on a straight line to a point having Coordinates of X = 2,743,163.00 and Y = 208,745.08; thence North 6,226.92 feet to a point on the North line of said Block 1 having Coordinates of X = 2,743,163.00 and Y = 214,972.00; thence East 13,816.00 feet along the North line of said Block 1 through its Northeast corner and along the North line of said Block 75 to the point of beginning, containing approximately **2,447.56 acres**, all as more particularly outlined on a plat on file in the Office of Mineral Resources, Department of Natural Resources. All bearings, distances and coordinates are based on Louisiana Coordinate System of 1927, (North or South Zone).

NOTE: The above description of the Tract nominated for lease has been provided and corrected, where required, exclusively by the nomination party. Any mineral lease selected from this Tract and awarded by the Louisiana State Mineral Board shall be without warranty of any kind, either express, implied, or statutory, including, but not limited to, the implied warranties of merchantability and fitness for a particular purpose. Should the mineral lease awarded by the Louisiana State Mineral Board be subsequently modified, cancelled or abrogated due to the existence of conflicting leases, operating agreements, private claims or

other future obligations or conditions which may affect all or any portion of the leased Tract, it shall not relieve the Lessee of the obligation to pay any bonus due thereon to the Louisiana State Mineral Board, nor shall the Louisiana State Mineral Board be obligated to refund any consideration paid by the Lessor prior to such modification, cancellation, or abrogation, including, but not limited to, bonuses, rentals and royalties.

NOTE: The State of Louisiana does hereby reserve, and this lease shall be subject to, the imprescriptible right of surface use in the nature of a servitude in favor of the Department of Natural Resources, including its Offices and Commissions, for the sole purpose of implementing, constructing, servicing and maintaining approved coastal zone management and/or restoration projects. Utilization of any and all rights derived under this lease by the mineral lessee, its agents, successors or assigns, shall not interfere with nor hinder the reasonable surface use by the Department of Natural Resources, its Offices or Commissions, as herein above reserved.

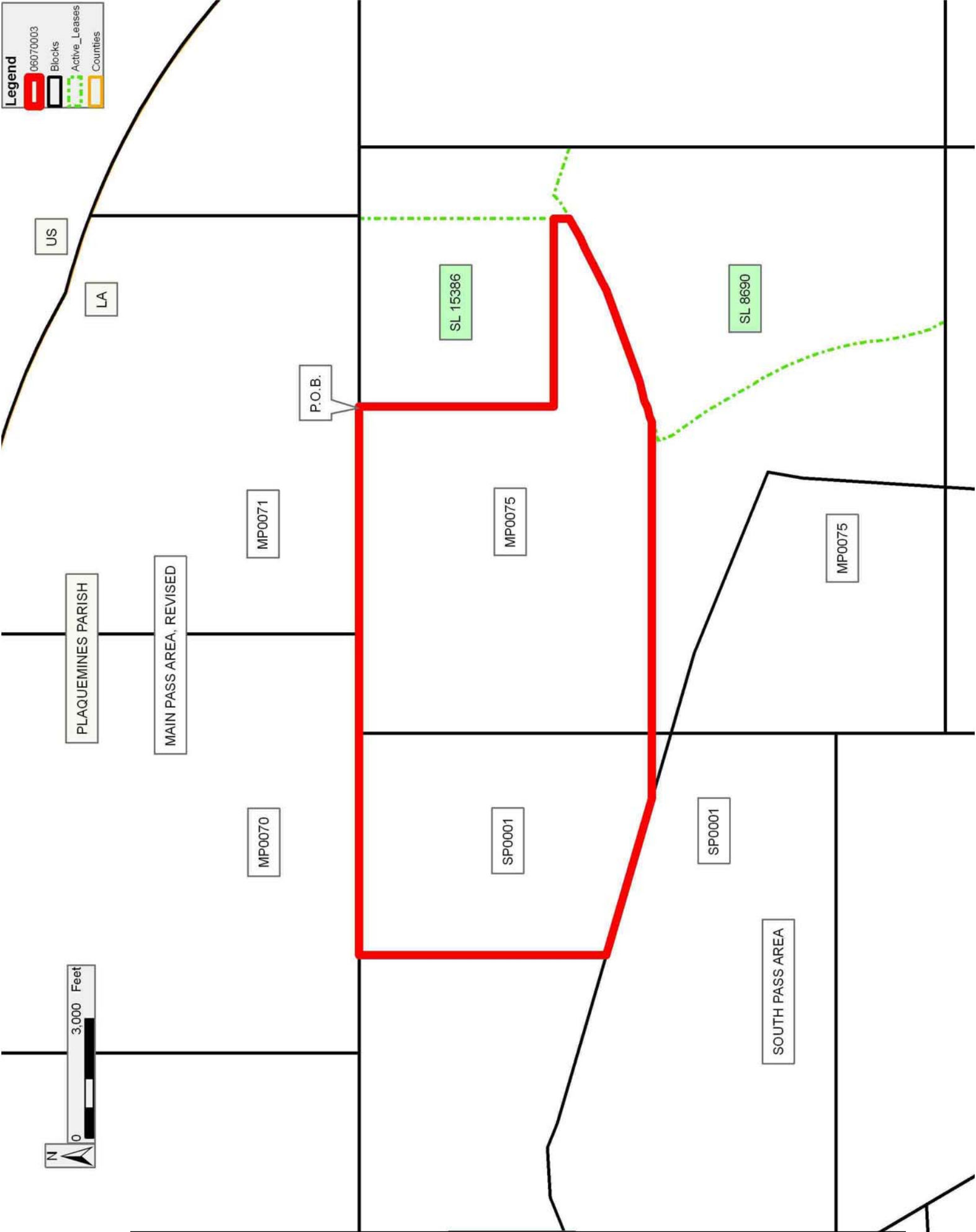
NOTE: The Department of Wildlife and Fisheries has designated certain areas in the coastal waters of the State of Louisiana as Oyster Seed Bed Areas. The exact location of those Seed Bed Areas must be obtained from the Department of Wildlife and Fisheries and any work done under a mineral lease from the State of Louisiana may necessarily be conducted in conformity with the rules and regulations promulgated by the said Department of Wildlife and Fisheries for Oyster Seed Bed Areas.

Applicant: LESLIE M. COOPER

Bidder	Cash Payment	Price/ Acre	Rental	Oil	Gas	Other

Legend

- 06070003
- Blocks
- Active_Leases
- Counties



TRACT 38415 - Portion of Blocks 75, and 76, Main Pass Area, Revised, and Block 1, South Pass Area, Plaquemines Parish, Louisiana

The beds and bottoms of all water bodies belonging to the State of Louisiana located in Blocks 75, and 76, Main Pass Area, Revised, and Block 1, South Pass Area, together with any present lands formed by accretion to the shoreline or islands formed therein, located in Plaquemines Parish, Louisiana, owned by and not presently under mineral lease as of July 12, 2006, from the State of Louisiana, the geographical area of which is more fully described as follows: Beginning at a point in Block 76, Main Pass Area, Revised, also being the Southwest corner of State Lease No. 15042, as amended, having Coordinates of X = 2,760,308.00 and Y = 194,946.02; thence East 3,200.00 feet along the South boundary of said State Lease No. 15042 to a point on the East line of said Block 76 having Coordinates of X = 2,763,508.00 and Y = 194,946.02; thence South 3,204.59 feet along the East line of said Block 76 to a point having Coordinates of X = 2,763,508.00 and Y = 191,741.43; thence West 9,100.14 feet to a point on the Shoreline having Coordinates of X = 2,754,407.86 and Y = 191,741.43; thence along said Shoreline the following courses: Northeasterly along a straight line out of said Block 76 into Block 75, Main Pass Area, Revised to a point having Coordinates of X = 2,755,178.00 and Y = 203,815.00, Northeasterly along a straight line to a point having Coordinates of X = 2,755,325.00 and Y = 204,680.00, Northwesterly along a straight line to a point having Coordinates of X = 2,750,755.00 and Y = 206,535.00 and Northwesterly along a straight line out of said Block 75 into Block 1, South Pass Area to a point having Coordinates of X = 2,747,120.59 and Y = 207,593.00; thence East 9,461.03 feet out of said Block 1 into said Block 75 to a point on the West boundary of State Lease No. 8690, as amended having Coordinates of X = 2,756,581.61 and Y = 207,593.00; thence along the boundary of said State Lease No. 8690 the following courses and distances: South 65 degrees 37 minutes 50 seconds West 201.33 feet to a point having Coordinates of X = 2,756,398.22 and Y = 207,509.93, South 76 degrees 11 minutes 38 seconds West 277.23 feet to a point having Coordinates of X = 2,756,129.00 and Y = 207,443.77, along an arc to the left having a radius of 1,175 feet and center at X = 2,757,285.96 and Y = 207,648.85 to a point having Coordinates of X = 2,756,278.00 and Y = 207,045.00, South 34 degrees 51 minutes 16 seconds East 1,023.63 feet to a point having Coordinates of X = 2,756,863.00 and Y = 206,205.00, South 30 degrees 25 minutes 12 seconds East 1,337.06 feet to a point having Coordinates of X = 2,757,540.00 and Y = 205,052.01, along an arc to the right having a radius of 7,595 feet and a center of X = 2,751,097.27 and Y = 201,030.16 to a point having Coordinates of X = 2,758,610.00 and Y = 202,145.00, along an arc to the left having a radius of 6,420 feet and center of X = 2,765,011.96 and Y = 202,625.94 to a point having Coordinates of X = 2,758,920.00 and Y = 200,600.00 and along an arc to the left having a radius of 15,264 feet and a center at X = 2,772,565.62 and Y = 207,440.09 to its Southwest corner also being a point on the South line of said Block 75 having Coordinates of X = 2,759,120.42 and Y = 200,214.00; thence East 0.02 feet along the South boundary of said State Lease No. 8690 to the Northwest corner of State Lease No. 13287, as

amended, having Coordinates of X = 2,759,120.44 and Y = 200,214.00; thence along the boundary of said State Lease No. 13287 the following courses and distances: along an arc to the left having a radius of 15,264 feet and center at X = 2,772,565.64 and Y = 207,440.08 to a point having Coordinates of X = 2,760,285.00 and Y = 198,375.00 and South 73 degrees 58 minutes 18 seconds East 23.93 feet to the Northwest corner of said State Lease No. 15042 having Coordinates of X = 2,760,308.00 and Y = 198,368.40; thence South 3,422.38 feet along the West boundary of said State Lease No. 15042 to the point of beginning, containing approximately **2,009.08 acres**, all as more particularly outlined on a plat on file in the Office of Mineral Resources, Department of Natural Resources. All bearings, distances and coordinates are based on Louisiana Coordinate System of 1927, (North or South Zone).

NOTE: The above description of the Tract nominated for lease has been provided and corrected, where required, exclusively by the nomination party. Any mineral lease selected from this Tract and awarded by the Louisiana State Mineral Board shall be without warranty of any kind, either express, implied, or statutory, including, but not limited to, the implied warranties of merchantability and fitness for a particular purpose. Should the mineral lease awarded by the Louisiana State Mineral Board be subsequently modified, cancelled or abrogated due to the existence of conflicting leases, operating agreements, private claims or other future obligations or conditions which may affect all or any portion of the leased Tract, it shall not relieve the Lessee of the obligation to pay any bonus due thereon to the Louisiana State Mineral Board, nor shall the Louisiana State Mineral Board be obligated to refund any consideration paid by the Lessor prior to such modification, cancellation, or abrogation, including, but not limited to, bonuses, rentals and royalties.

NOTE: The State of Louisiana does hereby reserve, and this lease shall be subject to, the imprescriptible right of surface use in the nature of a servitude in favor of the Department of Natural Resources, including its Offices and Commissions, for the sole purpose of implementing, constructing, servicing and maintaining approved coastal zone management and/or restoration projects. Utilization of any and all rights derived under this lease by the mineral lessee, its agents, successors or assigns, shall not interfere with nor hinder the reasonable surface use by the Department of Natural Resources, its Offices or Commissions, as herein above reserved.

Applicant: LESLIE M. COOPER

Bidder	Cash Payment	Price/ Acre	Rental	Oil	Gas	Other

Legend

- 06070004
- Wildlife
- Blocks
- Active_Leases
- Counties

