

TRACT 38397 - Portion of Block 4, West Cameron Area, Revised, Cameron Parish, Louisiana

The beds and bottoms of all water bodies belonging to the State of Louisiana located in Block 4, West Cameron Area, Revised, together with any present lands formed by accretion to the shoreline or islands formed therein, located in Cameron Parish, Louisiana, owned by and not presently under mineral lease as of July 12, 2006, from the State of Louisiana, the geographical area of which is more fully described as follows: Beginning at a point on the East line of Block 4, West Cameron Area, Revised, having Coordinates of X = 1,391,451.71 and Y = 401,000.00; thence West 7,451.71 feet to a point having Coordinates of X = 1,384,000.00 and Y = 401,000.00; thence North 8,136.30 feet to a point on the Coastline as per the Supreme Court Decree dated June 16, 1975, having Coordinates of X = 1,384,000.00 and Y = 409,136.30; thence along said Coastline the following courses: Northeasterly on a straight line to a point having Coordinates of X = 1,386,636.00 and Y = 409,216.00 and Northeasterly on a straight line to the Northeast corner of said Block 4 having Coordinates of X = 1,391,451.71 and Y = 409,240.45; thence South 8,240.45 feet along the East line of said Block 4 to the Point of Beginning, containing **1,404.43 acres**, all as more particularly outlined on a plat on file in the Office of Mineral Resources, Department of Natural Resources. All bearings, distances and coordinates are based on Louisiana Coordinate System of 1927, (North or South Zone).

NOTE: The above description of the Tract nominated for lease has been provided and corrected, where required, exclusively by the nomination party. Any mineral lease selected from this Tract and awarded by the Louisiana State Mineral Board shall be without warranty of any kind, either express, implied, or statutory, including, but not limited to, the implied warranties of merchantability and fitness for a particular purpose. Should the mineral lease awarded by the Louisiana State Mineral Board be subsequently modified, cancelled or abrogated due to the existence of conflicting leases, operating agreements, private claims or other future obligations or conditions which may affect all or any portion of the leased Tract, it shall not relieve the Lessee of the obligation to pay any bonus due thereon to the Louisiana State Mineral Board, nor shall the Louisiana State Mineral Board be obligated to refund any consideration paid by the Lessor prior to such modification, cancellation, or abrogation, including, but not limited to, bonuses, rentals and royalties.

NOTE: The State of Louisiana does hereby reserve, and this lease shall be subject to, the imprescriptible right of surface use in the nature of a servitude in favor of the Department of Natural Resources, including its Offices and Commissions, for the sole purpose of implementing, constructing, servicing and maintaining approved coastal zone management and/or restoration projects. Utilization of any and all rights derived under this lease by the mineral lessee, its agents, successors or assigns, shall not interfere with nor hinder the reasonable surface use by the

Department of Natural Resources, its Offices or Commissions, as herein above reserved.

Applicant: DARA DOTY

Bidder	Cash Payment	Price/ Acre	Rental	Oil	Gas	Other

Legend

06070017
 Blocks
 Counties
 06070017_05_09_06
DOQQ2004



TRACT 38398 - Portion of Blocks 3, and 4, West Cameron Area, Revised, Cameron Parish, Louisiana

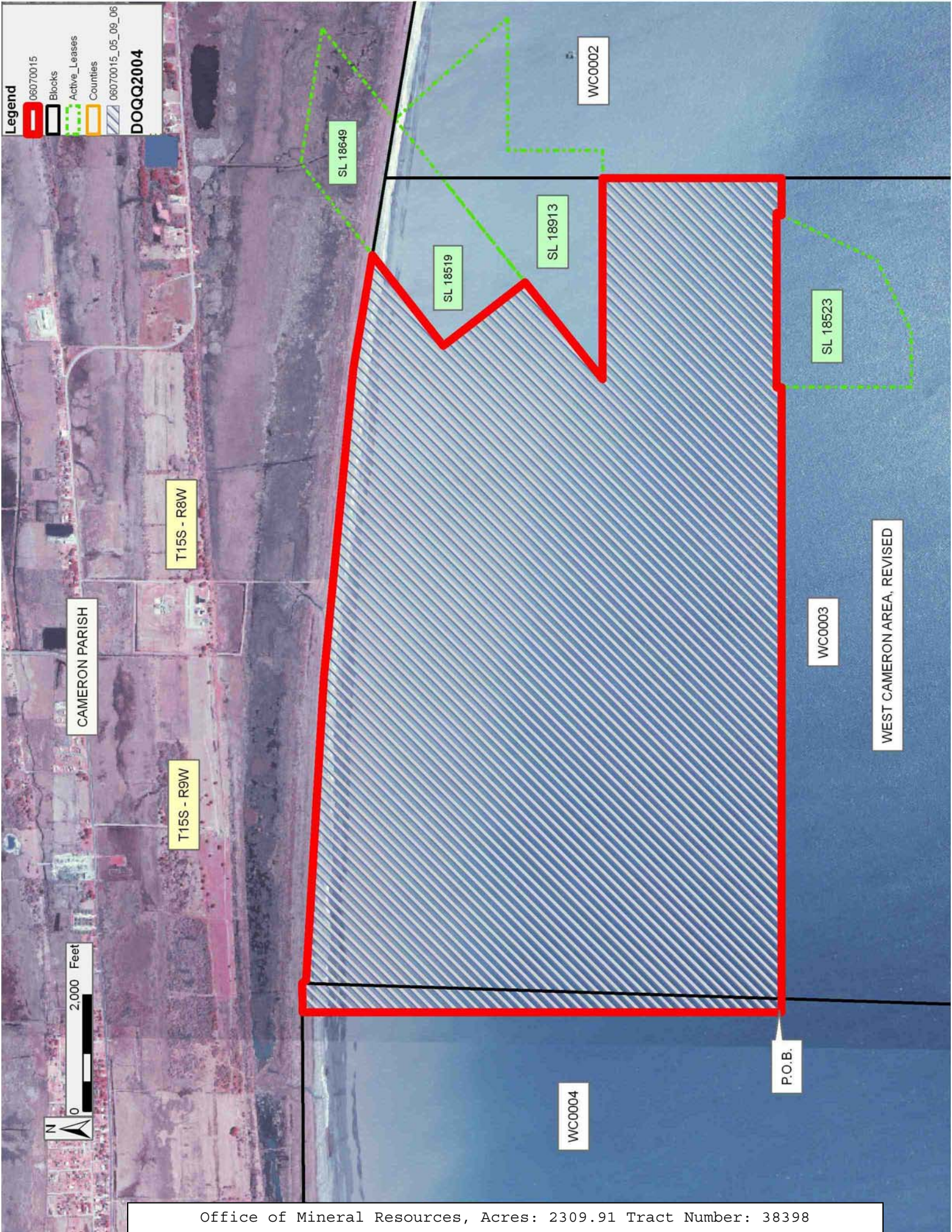
The beds and bottoms of all water bodies belonging to the State of Louisiana located in Blocks 3, and 4, West Cameron Area, Revised, together with any present lands formed by accretion to the shoreline or islands formed therein, located in Cameron Parish, Louisiana, owned by and not presently under mineral lease as of July 12, 2006, from the State of Louisiana, the geographical area of which is more fully described as follows: Beginning at a point on the West line of Block 3, West Cameron Area, Revised, having Coordinates of X = 1,391,451.71 and Y = 401,000.00; thence North 8,240.45 feet along the West line of said Block 3 to its Northwest corner, said corner also being a point on the Coastline as per the Supreme Court Decree dated June 16, 1975, having Coordinates of X = 1,391,451.71 and Y = 409,240.45; thence along said Coastline the following courses: Northeasterly on a straight line to a point having Coordinates of X = 1,391,954.00 and Y = 409,243.00; Southeasterly on a straight line to a point having Coordinates of X = 1,392,000.00 and Y = 409,180.00; Southeasterly on a straight line to a point having Coordinates of X = 1,397,220.00 and Y = 408,870.00; Southeasterly on a straight line to a point having Coordinates of X = 1,402,525.00 and Y = 408,365.00; and Southeasterly on a straight line to the Northwest corner of State Lease No. 18519 having Coordinates of X = 1,404,483.31 and Y = 408,038.61; thence along the boundary of said State Lease No. 18519 the following courses: South 52 degrees 05 minutes 56 seconds West 1,983.74 feet to a point having Coordinates of X = 1,402,918.00 and Y = 406,820.00 and South 37 degrees 48 minutes 27 seconds East 1,784.64 feet to its Southeast corner, said corner also being a point on the Western boundary of State Lease No. 18913, having Coordinates of X = 1,404,012.00 and Y = 405,410.00; thence along the boundary of said State Lease No. 18913 the following courses: South 51 degrees 24 minutes 55 seconds West 2,132.53 feet to a point having Coordinates of X = 1,402,345.03 and Y = 404,080.00, and South 89 degrees 56 minutes 54 seconds East 3,461.17 feet to a point on the East line of said Block 3 having Coordinates of X = 1,405,806.20 and Y = 404,076.88; thence South 3,076.88 feet along the East line of said Block 3 to a point having Coordinates of X = 1,405,806.20 and Y = 401,000.00; thence West 637.51 feet to a point on the Eastern boundary of State Lease No. 18523 having Coordinates of X = 1,405,168.69 and Y = 401,000.00; thence along the boundary of said State Lease No. 18523 the following courses: North 25 degrees 17 minutes 59 seconds East 91.52 feet to a point having Coordinates of X = 1,405,207.80 and Y = 401,082.74; West 3,001.80 feet to a point having Coordinates of X = 1,402,206.00 and Y = 401,082.74; and South 82.74 feet to a point having Coordinates of X = 1,402,206.00 and Y = 401,000.00; thence West 10,754.29 feet to the Point of Beginning, containing **2,309.91 acres**, all as more particularly outlined on a plat on file in the Office of Mineral Resources, Department of Natural Resources. All bearings, distances and coordinates are based on Louisiana Coordinate System of 1927, (North or South Zone).

NOTE: The above description of the Tract nominated for lease has been provided and corrected, where required, exclusively by the nomination party. Any mineral lease selected from this Tract and awarded by the Louisiana State Mineral Board shall be without warranty of any kind, either express, implied, or statutory, including, but not limited to, the implied warranties of merchantability and fitness for a particular purpose. Should the mineral lease awarded by the Louisiana State Mineral Board be subsequently modified, cancelled or abrogated due to the existence of conflicting leases, operating agreements, private claims or other future obligations or conditions which may affect all or any portion of the leased Tract, it shall not relieve the Lessee of the obligation to pay any bonus due thereon to the Louisiana State Mineral Board, nor shall the Louisiana State Mineral Board be obligated to refund any consideration paid by the Lessor prior to such modification, cancellation, or abrogation, including, but not limited to, bonuses, rentals and royalties.

NOTE: The State of Louisiana does hereby reserve, and this lease shall be subject to, the imprescriptible right of surface use in the nature of a servitude in favor of the Department of Natural Resources, including its Offices and Commissions, for the sole purpose of implementing, constructing, servicing and maintaining approved coastal zone management and/or restoration projects. Utilization of any and all rights derived under this lease by the mineral lessee, its agents, successors or assigns, shall not interfere with nor hinder the reasonable surface use by the Department of Natural Resources, its Offices or Commissions, as herein above reserved.

Applicant: DARA DOTY

Bidder	Cash Payment	Price/ Acre	Rental	Oil	Gas	Other



TRACT 38399 - Portion of Block 2, West Cameron Area, Revised, Cameron Parish, Louisiana

The beds and bottoms of all water bodies belonging to the State of Louisiana located in Block 2, West Cameron Area, Revised, together with any present lands formed by accretion to the shoreline or islands formed therein, located in Cameron Parish, Louisiana, owned by and not presently under mineral lease as of July 12, 2006, from the State of Louisiana, the geographical area of which is more fully described as follows: Beginning at a point on the Coastline as per the Supreme Court Decree dated June 16, 1975, said point also being the most Northerly Northeast corner of State Lease No. 18423, having Coordinates of X = 1,411,288.31 and Y = 406,840.00; thence along the boundary of said State Lease No. 18423 the following courses: West 2,720.31 feet to a point having Coordinates of X = 1,408,568.00 and Y = 406,840.00; South 1,130.00 feet to a point, said point also being the most Easterly Southeast corner of State Lease No. 18913, having Coordinates of X = 1,408,568.00 and Y = 405,710.00; thence North 42 degrees 02 minutes 59 seconds West 2,611.72 feet along the boundary of said State Lease No. 18913 to its Northeast corner, said corner also being the Northeast corner of State Lease No. 18519, and a point on said Coastline, having Coordinates of X = 1,406,818.74 and Y = 407,649.37; thence along said Coastline the following courses: Southeasterly on a straight line to a point having Coordinates of X = 1,410,175.00 and Y = 407,090.00 and Southeasterly on a straight line to the Point of Beginning, containing **50.44 acres**, all as more particularly outlined on a plat on file in the Office of Mineral Resources, Department of Natural Resources. All bearings, distances and coordinates are based on Louisiana Coordinate System of 1927, (North or South Zone).

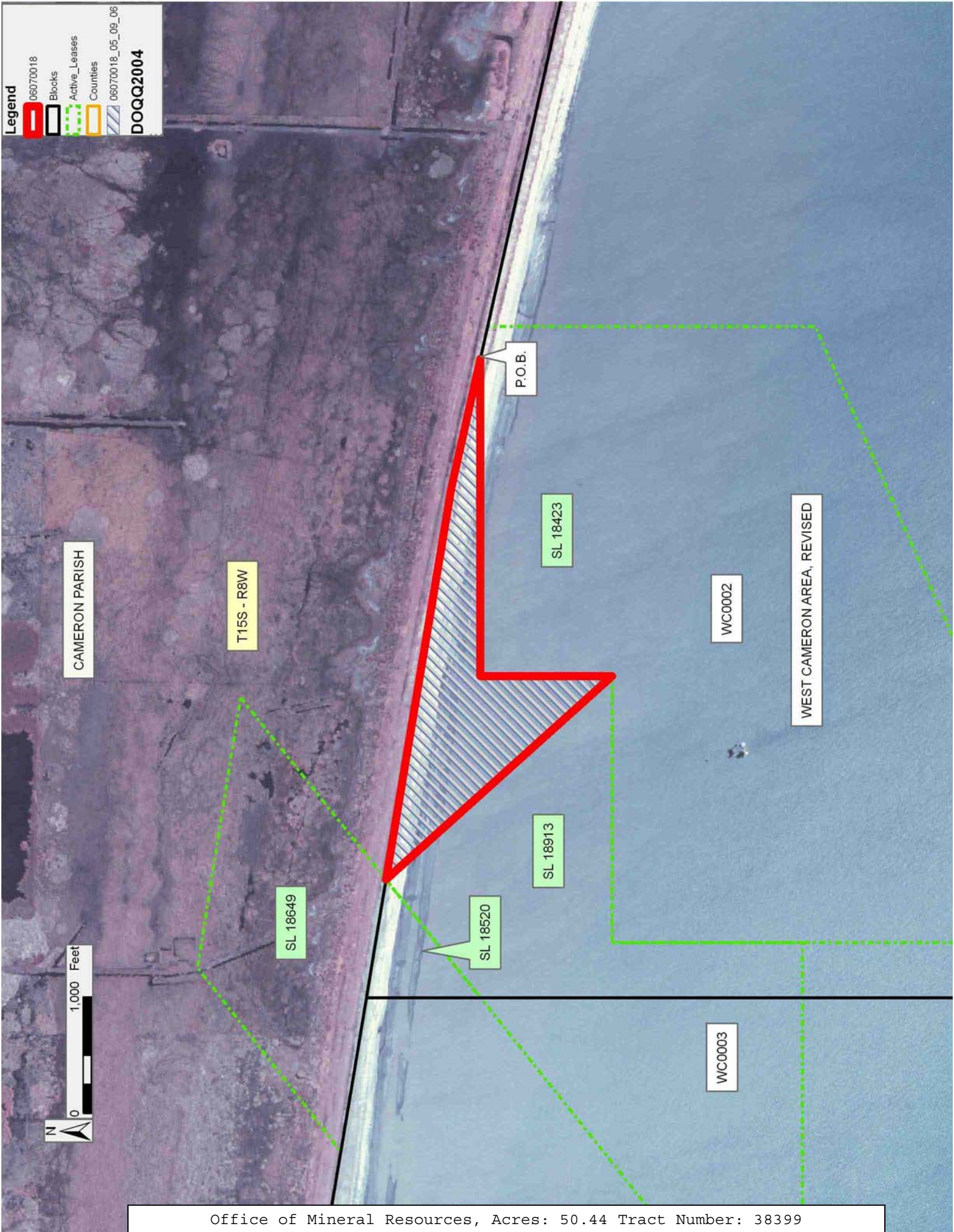
NOTE: The above description of the Tract nominated for lease has been provided and corrected, where required, exclusively by the nomination party. Any mineral lease selected from this Tract and awarded by the Louisiana State Mineral Board shall be without warranty of any kind, either express, implied, or statutory, including, but not limited to, the implied warranties of merchantability and fitness for a particular purpose. Should the mineral lease awarded by the Louisiana State Mineral Board be subsequently modified, cancelled or abrogated due to the existence of conflicting leases, operating agreements, private claims or other future obligations or conditions which may affect all or any portion of the leased Tract, it shall not relieve the Lessee of the obligation to pay any bonus due thereon to the Louisiana State Mineral Board, nor shall the Louisiana State Mineral Board be obligated to refund any consideration paid by the Lessor prior to such modification, cancellation, or abrogation, including, but not limited to, bonuses, rentals and royalties.

NOTE: The State of Louisiana does hereby reserve, and this lease shall be subject to, the imprescriptible right of surface use in the nature of a servitude in favor of the Department of Natural Resources, including its Offices and Commissions, for the sole purpose of implementing, constructing, servicing and maintaining approved coastal zone management

and/or restoration projects. Utilization of any and all rights derived under this lease by the mineral lessee, its agents, successors or assigns, shall not interfere with nor hinder the reasonable surface use by the Department of Natural Resources, its Offices or Commissions, as herein above reserved.

Applicant: DARA DOTY

Bidder	Cash Payment	Price/ Acre	Rental	Oil	Gas	Other



TRACT 38400 - Portion of Block 2, West Cameron Area, Revised, Cameron Parish, Louisiana

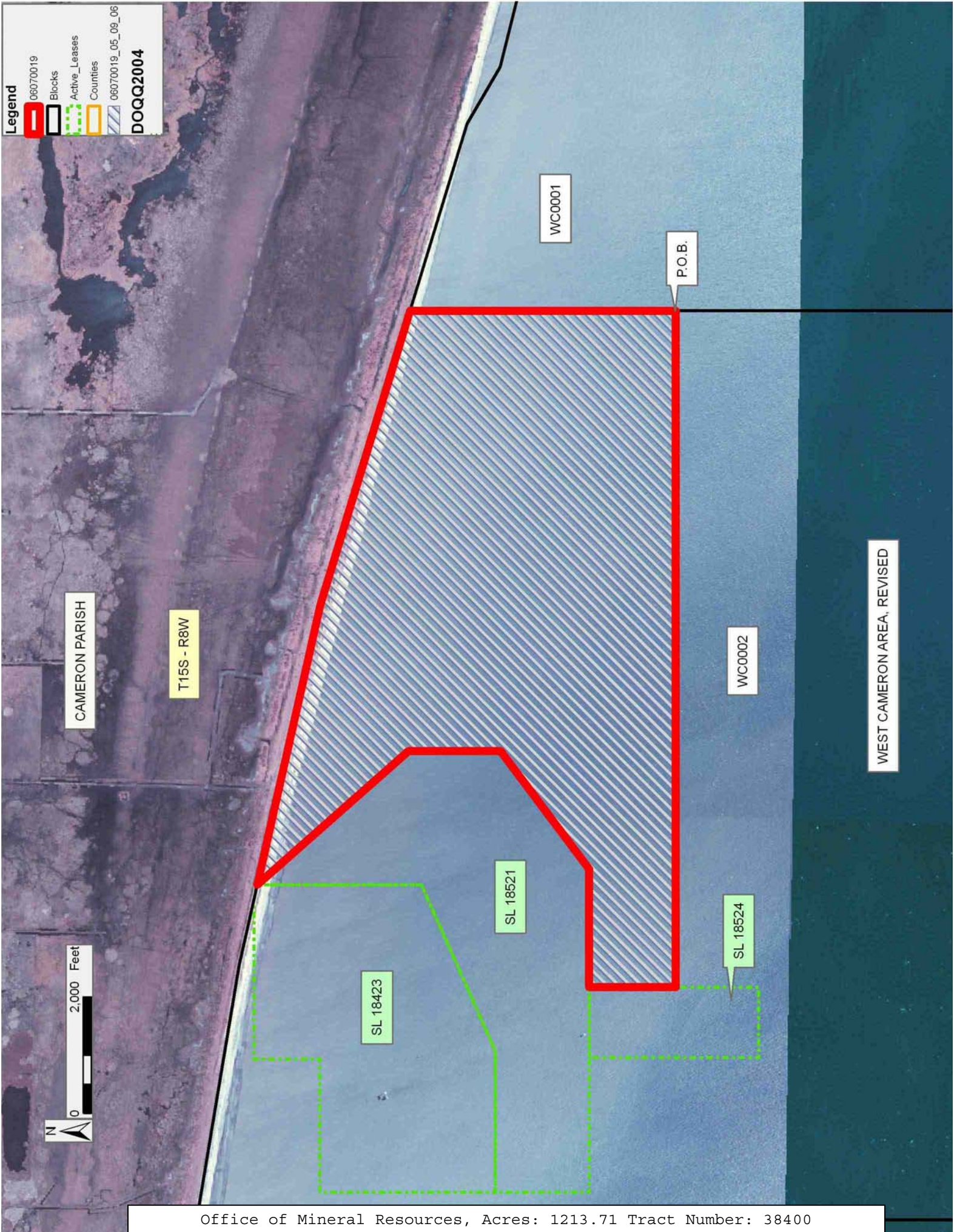
The beds and bottoms of all water bodies belonging to the State of Louisiana located in Block 2, West Cameron Area, Revised, together with any present lands formed by accretion to the shoreline or islands formed therein, located in Cameron Parish, Louisiana, owned by and not presently under mineral lease as of July 12, 2006, from the State of Louisiana, the geographical area of which is more fully described as follows: Beginning at a point on the East line of Block 2, West Cameron Area, Revised, having Coordinates of X = 1,421,416.19 and Y = 399,600.00; thence West 11,616.19 feet to a point on the East line of State Lease No. 18524 having Coordinates of X = 1,409,800.00 and Y = 399,600.00; thence North 1,482.74 feet along the East line of State Lease No. 18524 to its Northeast corner, said corner also being a point on the Southern boundary of State Lease No. 18521, having Coordinates of X = 1,409,800.00 and Y = 401,082.74; thence along the boundary of said State Lease No. 18521 the following courses: East 2,028.00 feet to a point having Coordinates of X = 1,411,828.00 and Y = 401,082.74; North 53 degrees 05 minutes 21 seconds East 2,536.36 feet to a point having Coordinates of X = 1,413,856.00 and Y = 402,606.00; North 1,576.00 feet to a point having Coordinates of X = 1,413,856.00 and Y = 404,182.00; and North 41 degrees 25 minutes 49 seconds West 3,462.25 feet to its most Northern corner, said corner also being a point on the Coastline as per the Supreme Court Decree dated June 16, 1975, having Coordinates of X = 1,411,565.00 and Y = 406,777.87; thence along said Coastline the following courses: Southeasterly on a straight line to a point having Coordinates of X = 1,416,365.00 and Y = 405,700.00 and Southeasterly on a straight line to the Northeast corner of said Block 2 having Coordinates of X = 1,421,416.19 and Y = 404,156.83; thence South 4,556.83 feet along the East line of said Block 2 to the Point of Beginning, containing **1,213.71 acres**, all as more particularly outlined on a plat on file in the Office of Mineral Resources, Department of Natural Resources. All bearings, distances and coordinates are based on Louisiana Coordinate System of 1927, (North or South Zone).

NOTE: The above description of the Tract nominated for lease has been provided and corrected, where required, exclusively by the nomination party. Any mineral lease selected from this Tract and awarded by the Louisiana State Mineral Board shall be without warranty of any kind, either express, implied, or statutory, including, but not limited to, the implied warranties of merchantability and fitness for a particular purpose. Should the mineral lease awarded by the Louisiana State Mineral Board be subsequently modified, cancelled or abrogated due to the existence of conflicting leases, operating agreements, private claims or other future obligations or conditions which may affect all or any portion of the leased Tract, it shall not relieve the Lessee of the obligation to pay any bonus due thereon to the Louisiana State Mineral Board, nor shall the Louisiana State Mineral Board be obligated to refund any consideration paid by the Lessor prior to such modification, cancellation, or abrogation, including, but not limited to, bonuses, rentals and royalties.

NOTE: The State of Louisiana does hereby reserve, and this lease shall be subject to, the imprescriptible right of surface use in the nature of a servitude in favor of the Department of Natural Resources, including its Offices and Commissions, for the sole purpose of implementing, constructing, servicing and maintaining approved coastal zone management and/or restoration projects. Utilization of any and all rights derived under this lease by the mineral lessee, its agents, successors or assigns, shall not interfere with nor hinder the reasonable surface use by the Department of Natural Resources, its Offices or Commissions, as herein above reserved.

Applicant: DARA DOTY

Bidder	Cash Payment	Price/ Acre	Rental	Oil	Gas	Other



TRACT 38401 - Portion of Block 2, West Cameron Area, Revised, Cameron Parish, Louisiana

The beds and bottoms of all water bodies belonging to the State of Louisiana located in Block 2, West Cameron Area, Revised, together with any present lands formed by accretion to the shoreline or islands formed therein, located in Cameron Parish, Louisiana, owned by and not presently under mineral lease as of July 12, 2006, from the State of Louisiana, the geographical area of which is more fully described as follows: Beginning at a point on the East line of Block 2, West Cameron Area, Revised, having Coordinates of X = 1,421,416.19 and Y = 399,600.00; thence South 5,809.76 feet along the East line of said Block 2 to its Southeast corner having Coordinates of X = 1,421,416.19 and Y = 393,790.24; West 15,609.99 feet along the South line of said Block 2 to its Southwest corner having Coordinates of X = 1,405,806.20 and Y = 393,790.24; North 10,286.64 feet along the West line of said Block 2 to a point on the South boundary of State Lease No. 18913 having Coordinates of X = 1,405,806.20 and Y = 404,076.88; thence South 89 degrees 56 minutes 54 seconds East 473.80 feet along the South line of said State Lease No. 18913 to its Southeast corner, said corner also being a point on the West line of State Lease No. 18423, having Coordinates of X = 1,406,280.00 and Y = 404,076.45; thence South 1,376.45 feet along the West line of said State Lease No. 18423 to its Southwest corner said corner also being the Northwest corner of State Lease No. 18521, having Coordinates of X = 1,406,280.00 and Y = 402,700.00; thence along the boundary of said State Lease No. 18521 the following courses: South 1,617.26 feet to a point having Coordinates of X = 1,406,280.00 and Y = 401,082.74, and East 2,319.00 feet to the Northwest corner of State Lease No. 18524 having Coordinates of X = 1,408,599.00 and Y = 401,082.74; thence along the boundary of said State Lease No. 18524 the following courses: South 2,009.74 feet to a point having Coordinates of X = 1,408,599.00 and Y = 399,073.00; South 898.00 feet to a point having Coordinates of X = 1,408,599.00 and Y = 398,175.00; East 1,201.00 feet to a point having Coordinates of X = 1,409,800.00 and Y = 398,175.00; and North 1,425.00 feet to a point having Coordinates of X = 1,409,800.00 and Y = 399,600.00; thence East 11,616.19 feet to the Point of Beginning, containing **2,170.30 acres**, all as more particularly outlined on a plat on file in the Office of Mineral Resources, Department of Natural Resources. All bearings, distances and coordinates are based on Louisiana Coordinate System of 1927, (North or South Zone).

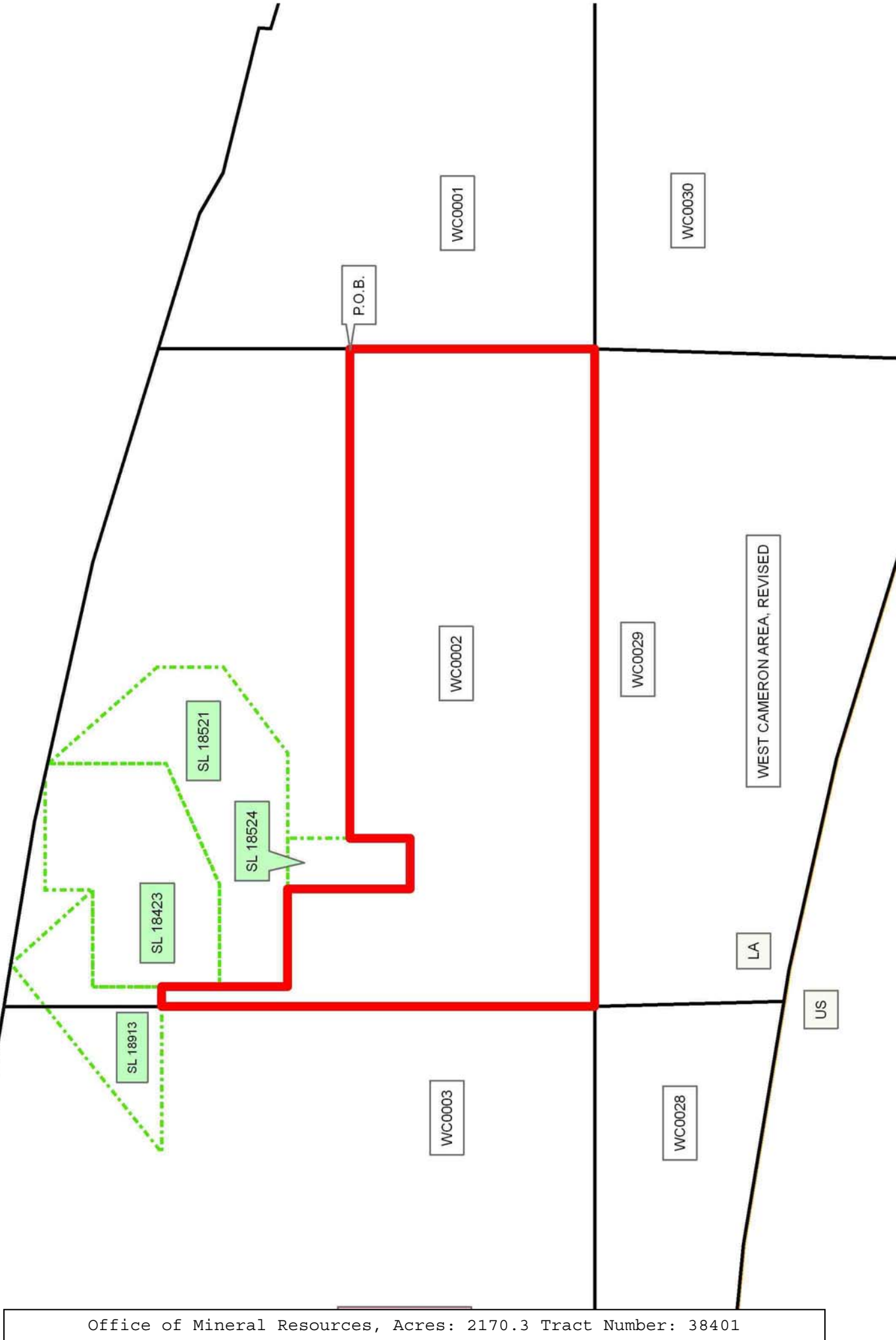
NOTE: The above description of the Tract nominated for lease has been provided and corrected, where required, exclusively by the nomination party. Any mineral lease selected from this Tract and awarded by the Louisiana State Mineral Board shall be without warranty of any kind, either express, implied, or statutory, including, but not limited to, the implied warranties of merchantability and fitness for a particular purpose. Should the mineral lease awarded by the Louisiana State Mineral Board be subsequently modified, cancelled or abrogated due to the existence of conflicting leases, operating agreements, private claims or other future obligations or conditions which may affect all or any portion

of the leased Tract, it shall not relieve the Lessee of the obligation to pay any bonus due thereon to the Louisiana State Mineral Board, nor shall the Louisiana State Mineral Board be obligated to refund any consideration paid by the Lessor prior to such modification, cancellation, or abrogation, including, but not limited to, bonuses, rentals and royalties.

NOTE: The State of Louisiana does hereby reserve, and this lease shall be subject to, the imprescriptible right of surface use in the nature of a servitude in favor of the Department of Natural Resources, including its Offices and Commissions, for the sole purpose of implementing, constructing, servicing and maintaining approved coastal zone management and/or restoration projects. Utilization of any and all rights derived under this lease by the mineral lessee, its agents, successors or assigns, shall not interfere with nor hinder the reasonable surface use by the Department of Natural Resources, its Offices or Commissions, as herein above reserved.

Applicant: DARA DOTY

Bidder	Cash Payment	Price/ Acre	Rental	Oil	Gas	Other



TRACT 38402 - Portion of Blocks 28, 29, 3, and 4, West Cameron Area, Revised, Cameron Parish, Louisiana

The beds and bottoms of all water bodies belonging to the State of Louisiana located in Blocks 28, 29, 3, and 4, West Cameron Area, Revised, together with any present lands formed by accretion to the shoreline or islands formed therein, located in Cameron Parish, Louisiana, owned by and not presently under mineral lease and cross hatched as of July 12, 2006, from the State of Louisiana, the geographical area of which is more fully described as follows: Beginning at a point on the West line of Block 3, West Cameron Area, Revised, having Coordinates of X = 1,391,451.71 and Y = 401,000.00; thence East 10,754.29 feet to a point on the West line of State Lease No. 18523 having Coordinates of X = 1,402,206.00 and Y = 401,000.00; thence along the boundary of said State Lease No. 18523 the following courses: South 2,229.00 feet to a point having Coordinates of X = 1,402,206.00 and Y = 398,771.00; East 975.00 feet to a point having Coordinates of X = 1,403,181.00 and Y = 398,771.00; North 64 degrees 07 minutes 11 seconds East 1,347.10 feet to a point having Coordinates of X = 1,404,393.00 and Y = 399,359.00; and North 25 degrees 17 minutes 59 seconds East 1,815.10 feet to a point having Coordinates of X = 1,405,168.69 and Y = 401,000.00; thence East 637.51 feet to a point on the East line of said Block 3 having Coordinates of X = 1,405,806.20 and Y = 401,000.00; thence South 7,209.76 feet along the East line of said Block 3 to its Southeast corner, said corner also being a point on the North line of Block 28, West Cameron Area, having Coordinates of X = 1,405,806.20 and Y = 393,790.24; thence East 403.56 feet along the North line of said Block 28 to its Northeast corner having Coordinates of X = 1,406,209.76 and Y = 393,790.24; thence South 4,531.71 feet along the East line of Said Block 28 to a point on the Three Mile Decree Line derived from the June 16, 1975 United States vs. Louisiana No. 9 Original, having Coordinates of X = 1,406,209.76 and Y = 389,258.53; thence Northwesterly on a straight line along said Three Mile Decree Line to the Southeast corner of State Lease No. 17845 having Coordinates of X = 1,403,310.00 and Y = 389,741.75; thence North 4,408.49 feet along the East line of said State Lease No. 17845 to its Northeast corner, said corner also being the Southeast corner of State Lease No. 17842, having Coordinates of X = 1,403,310.00 and Y = 393,790.24; thence along the boundary of said State Lease No. 17842 the following courses: North 1,974.76 feet to a point having Coordinates of X = 1,403,310.00 and Y = 395,765.00; West 9,480.00 feet to a point having Coordinates of X = 1,393,830.00 and Y = 395,765.00; and South 1,974.76 feet to its Southwest corner, said corner also being the Northwest corner of said State Lease No. 17845, having Coordinates of X = 1,393,830.00 and Y = 393,790.24; thence along the boundary of said State Lease No. 17845 the following courses: South 1,590.24 feet to a point having Coordinates of X = 1,393,830.00 and Y = 392,200.00, and West 2,378.29 feet to its most Westerly Northwest corner, said corner also being a point on the West line of said Block 28, having Coordinates of X = 1,391,451.71 and Y = 392,200.00; thence North 1,590.24 feet to a common corner between said Block 28 and said Block 3 having Coordinates of X = 1,391,451.71 and Y = 393,790.24; thence North 7,209.76 along the West line of said Block 3 to

the Point of Beginning, containing **2,200.16 acres, LESS AND EXCEPT** that portion thereof, if any, lying seaward of the line three nautical miles from the coast line of Louisiana, as said three mile line has been decreed by the Supreme Court of the United States, as determined by a Special Master appointed therein, in litigation styled **United States v. State of Louisiana et al No. 9 Original**, in 1975, all as more particularly outlined on a plat in the Office of Mineral Resources, Department of Natural Resources. All bearings, distances and coordinates are based on the Louisiana Coordinate System of 1927, (South Zone).

NOTE: The above description of the Tract nominated for lease has been provided and corrected, where required, exclusively by the nomination party. Any mineral lease selected from this Tract and awarded by the Louisiana State Mineral Board shall be without warranty of any kind, either express, implied, or statutory, including, but not limited to, the implied warranties of merchantability and fitness for a particular purpose. Should the mineral lease awarded by the Louisiana State Mineral Board be subsequently modified, cancelled or abrogated due to the existence of conflicting leases, operating agreements, private claims or other future obligations or conditions which may affect all or any portion of the leased Tract, it shall not relieve the Lessee of the obligation to pay any bonus due thereon to the Louisiana State Mineral Board, nor shall the Louisiana State Mineral Board be obligated to refund any consideration paid by the Lessor prior to such modification, cancellation, or abrogation, including, but not limited to, bonuses, rentals and royalties.

NOTE: The State of Louisiana does hereby reserve, and this lease shall be subject to, the imprescriptible right of surface use in the nature of a servitude in favor of the Department of Natural Resources, including its Offices and Commissions, for the sole purpose of implementing, constructing, servicing and maintaining approved coastal zone management and/or restoration projects. Utilization of any and all rights derived under this lease by the mineral lessee, its agents, successors or assigns, shall not interfere with nor hinder the reasonable surface use by the Department of Natural Resources, its Offices or Commissions, as herein above reserved.

Bidder	Cash Payment	Price/ Acre	Rental	Oil	Gas	Other

Applicant: DARA DOTY

Legend

06070020

Blocks

Active_Leases

Counties



TRACT 38403 - Portion of Block 4, West Cameron Area, Revised, Cameron Parish, Louisiana

The beds and bottoms of all water bodies belonging to the State of Louisiana located in Block 4, West Cameron Area, Revised, together with any present lands formed by accretion to the shoreline or islands formed therein, located in Cameron Parish, Louisiana, owned by and not presently under mineral lease as of July 12, 2006, from the State of Louisiana, the geographical area of which is more fully described as follows: Beginning at a point on the East line of Block 4, West Cameron Area, Revised, having Coordinates of X = 1,391,451.71 and Y = 401,000.00; thence South 7,209.76 feet along the East line of said Block 4 to its Southeast corner having Coordinates of X = 1,391,451.71 and Y = 393,790.24; thence West 7,451.71 feet along the South line of said Block 4 to a point having Coordinates of X = 1,384,000.00 and Y = 393,790.24; thence North 7,209.76 feet to a point having Coordinates of X = 1,384,000.00 and Y = 401,000.00; thence East 7,451.71 feet to the Point of Beginning, containing **1,233.36 acres**, all as more particularly outlined on a plat on file in the Office of Mineral Resources, Department of Natural Resources. All bearings, distances and coordinates are based on Louisiana Coordinate System of 1927, (North or South Zone).

NOTE: The above description of the Tract nominated for lease has been provided and corrected, where required, exclusively by the nomination party. Any mineral lease selected from this Tract and awarded by the Louisiana State Mineral Board shall be without warranty of any kind, either express, implied, or statutory, including, but not limited to, the implied warranties of merchantability and fitness for a particular purpose. Should the mineral lease awarded by the Louisiana State Mineral Board be subsequently modified, cancelled or abrogated due to the existence of conflicting leases, operating agreements, private claims or other future obligations or conditions which may affect all or any portion of the leased Tract, it shall not relieve the Lessee of the obligation to pay any bonus due thereon to the Louisiana State Mineral Board, nor shall the Louisiana State Mineral Board be obligated to refund any consideration paid by the Lessor prior to such modification, cancellation, or abrogation, including, but not limited to, bonuses, rentals and royalties.

NOTE: The State of Louisiana does hereby reserve, and this lease shall be subject to, the imprescriptible right of surface use in the nature of a servitude in favor of the Department of Natural Resources, including its Offices and Commissions, for the sole purpose of implementing, constructing, servicing and maintaining approved coastal zone management and/or restoration projects. Utilization of any and all rights derived under this lease by the mineral lessee, its agents, successors or assigns, shall not interfere with nor hinder the reasonable surface use by the Department of Natural Resources, its Offices or Commissions, as herein above reserved.

Applicant: DARA DOTY

Bidder	Cash Payment	Price/ Acre	Rental	Oil	Gas	Other

Legend

06070016

Blocks

Counties



TRACT 38404 - Portion of Block 32, West Cameron Area, Revised, Cameron Parish, Louisiana

The beds and bottoms of all water bodies belonging to the State of Louisiana located in Block 32, West Cameron Area, Revised, together with any present lands formed by accretion to the shoreline or islands formed therein, located in Cameron Parish, Louisiana, owned by and not presently under mineral lease as of July 12, 2006, from the State of Louisiana, the geographical area of which is more fully described as follows: Beginning at a point on the South line of Block 32, West Cameron Area, Revised, having Coordinates of X = 1,461,500.00 and Y = 379,032.19; thence West 12,308.05 feet along the South line of said Block 32 to its Southwest corner having Coordinates of X = 1,449,191.95 and Y = 379,032.19; thence North 4,002.81 feet along the West line of said Block 32 to a point having Coordinates of X = 1,449,191.95 and Y = 383,035.00; thence East 1,614.05 feet to the Northwest corner of State Lease No. 18237 having Coordinates of X = 1,450,806.00 and Y = 383,035.00; thence along the boundary of said State Lease No. 18237 the following courses: South 2,275.00 feet to a point having Coordinates of X = 1,450,806.00 and Y = 380,760.00; East 4,582.00 feet to a point having Coordinates of X = 1,455,388.00 and Y = 380,760.00; North 73 degrees 35 minutes 34 seconds East 4,772.34 feet to a point having Coordinates of X = 1,459,966.00 and Y = 382,108.00; North 49 degrees 43 minutes 26 seconds West 1,433.93 feet to a point having Coordinates of X = 1,458,872.00 and Y = 383,035.00; and West 2,848.73 feet to a point having Coordinates of X = 1,456,023.27 and Y = 383,035.00; thence North 9,472.52 feet to a point on the Coastline as per the Supreme Court Decree dated June 16, 1975, having Coordinates of X = 1,456,023.27 and Y = 392,507.52; thence along said Coastline the following courses: Southeasterly on a straight line to a point having Coordinates of X = 1,460,435.00 and Y = 391,260.00 and Southeasterly on a straight line to a point having Coordinates of X = 1,461,500.00 and Y = 390,901.57; thence South 11,869.38 feet to the Point of Beginning, containing **1,828.00 acres**, all as more particularly outlined on a plat on file in the Office of Mineral Resources, Department of Natural Resources. All bearings, distances and coordinates are based on Louisiana Coordinate System of 1927, (North or South Zone).

NOTE: The above description of the Tract nominated for lease has been provided and corrected, where required, exclusively by the nomination party. Any mineral lease selected from this Tract and awarded by the Louisiana State Mineral Board shall be without warranty of any kind, either express, implied, or statutory, including, but not limited to, the implied warranties of merchantability and fitness for a particular purpose. Should the mineral lease awarded by the Louisiana State Mineral Board be subsequently modified, cancelled or abrogated due to the existence of conflicting leases, operating agreements, private claims or other future obligations or conditions which may affect all or any portion of the leased Tract, it shall not relieve the Lessee of the obligation to pay any bonus due thereon to the Louisiana State Mineral Board, nor shall the Louisiana State Mineral Board be obligated to refund any consideration

paid by the Lessor prior to such modification, cancellation, or abrogation, including, but not limited to, bonuses, rentals and royalties.

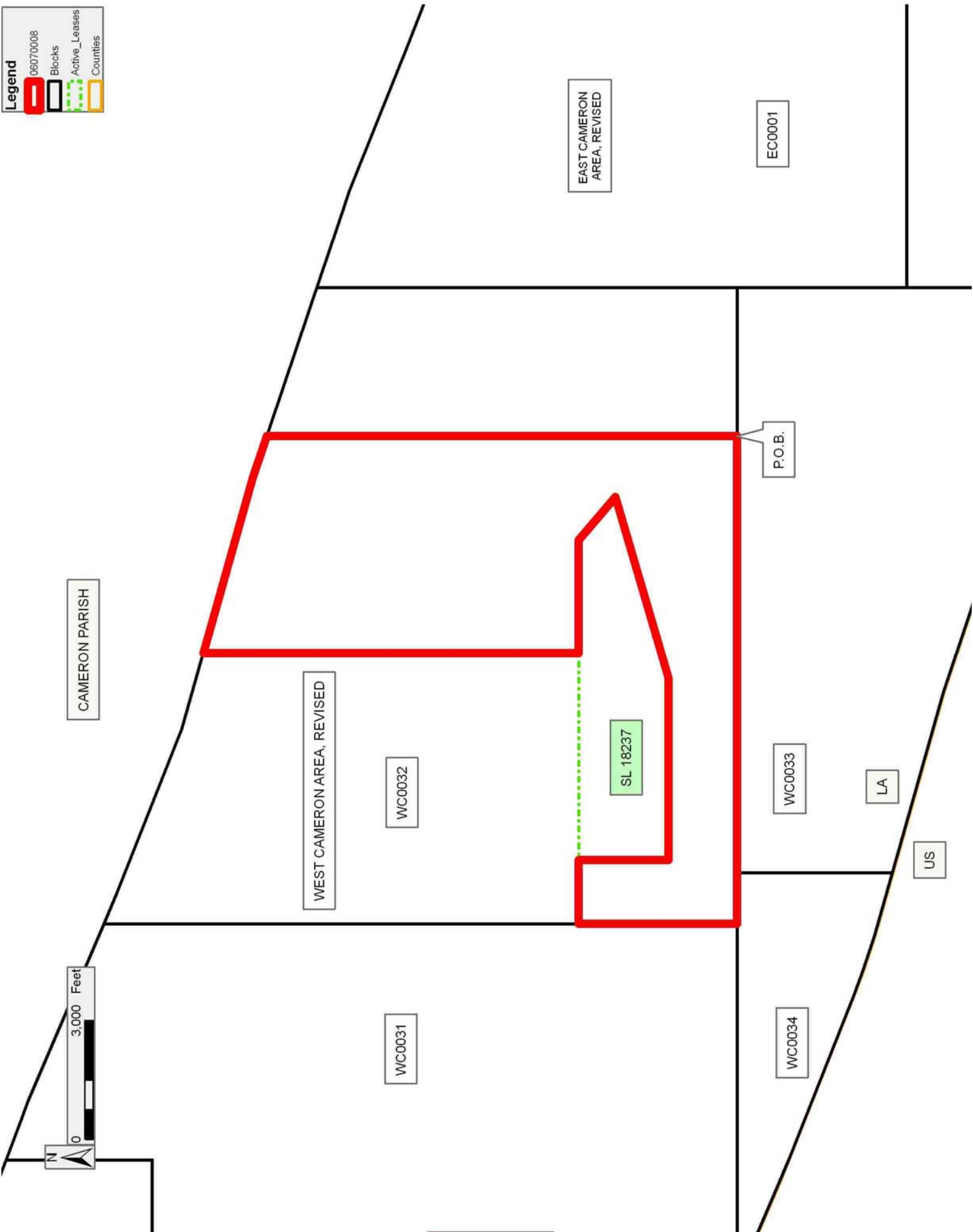
NOTE: The State of Louisiana does hereby reserve, and this lease shall be subject to, the imprescriptible right of surface use in the nature of a servitude in favor of the Department of Natural Resources, including its Offices and Commissions, for the sole purpose of implementing, constructing, servicing and maintaining approved coastal zone management and/or restoration projects. Utilization of any and all rights derived under this lease by the mineral lessee, its agents, successors or assigns, shall not interfere with nor hinder the reasonable surface use by the Department of Natural Resources, its Offices or Commissions, as herein above reserved.

Applicant: MOUTON LAND SERVICES

Bidder	Cash Payment	Price/ Acre	Rental	Oil	Gas	Other

Legend

- 06070008
- Blocks
- Active_Leases
- Counties



TRACT 38405 - Portion of Block 28, West Cameron Area, Revised, Cameron Parish, Louisiana

The beds and bottoms of all water bodies belonging to the State of Louisiana located in Block 28, West Cameron Area, Revised, together with any present lands formed by accretion to the shoreline or islands formed therein, located in Cameron Parish, Louisiana, owned by and not presently under mineral lease and cross hatched as of July 12, 2006, from the State of Louisiana, the geographical area of which is more fully described as follows: Beginning at a point on the Three Mile Decree Line derived from the June 16, 1975 United States vs. Louisiana No. 9 Original, said point also being an interior corner of State Lease No. 17845, having Coordinates of X = 1,400,500.00 and Y = 390,210.00; thence along said Three Mile Decree Line the following courses: Northwesterly on a straight line to a point having Coordinates of X = 1,400,158.00 and Y = 390,267.00, and Northwesterly on a straight line to an interior corner of State Lease No. 17845 having Coordinates of X = 1,396,025.00 and Y = 390,660.98; thence along the boundary of said State Lease No. 17845 the following courses: North 1,514.02 to a point having Coordinates of X = 1,396,025.00 and Y = 392,175.00; East 4,475.00 feet to a point having Coordinates of X = 1,400,500.00 and Y = 392,175.00, and South 1,965.00 feet to the Point of Beginning, containing **177.55 acres, LESS AND EXCEPT** that portion thereof, if any, lying seaward of the line three nautical miles from the coast line of Louisiana, as said three mile line has been decreed by the Supreme Court of the United States, as determined by a Special Master appointed therein, in litigation styled **United States v. State of Louisiana et al No. 9 Original**, in 1975, all as more particularly outlined on a plat in the Office of Mineral Resources, Department of Natural Resources. All bearings, distances and coordinates are based on the Louisiana Coordinate System of 1927, (South Zone).

NOTE: The above description of the Tract nominated for lease has been provided and corrected, where required, exclusively by the nomination party. Any mineral lease selected from this Tract and awarded by the Louisiana State Mineral Board shall be without warranty of any kind, either express, implied, or statutory, including, but not limited to, the implied warranties of merchantability and fitness for a particular purpose. Should the mineral lease awarded by the Louisiana State Mineral Board be subsequently modified, cancelled or abrogated due to the existence of conflicting leases, operating agreements, private claims or other future obligations or conditions which may affect all or any portion of the leased Tract, it shall not relieve the Lessee of the obligation to pay any bonus due thereon to the Louisiana State Mineral Board, nor shall the Louisiana State Mineral Board be obligated to refund any consideration paid by the Lessor prior to such modification, cancellation, or abrogation, including, but not limited to, bonuses, rentals and royalties.

NOTE: The State of Louisiana does hereby reserve, and this lease shall be subject to, the imprescriptible right of surface use in the nature of a servitude in favor of the Department of Natural Resources, including its

Offices and Commissions, for the sole purpose of implementing, constructing, servicing and maintaining approved coastal zone management and/or restoration projects. Utilization of any and all rights derived under this lease by the mineral lessee, its agents, successors or assigns, shall not interfere with nor hinder the reasonable surface use by the Department of Natural Resources, its Offices or Commissions, as herein above reserved.

Applicant: DARA DOTY

Bidder	Cash Payment	Price/ Acre	Rental	Oil	Gas	Other

Legend

06070021

Blocks

Counties



CAMERON PARISH

WC0003

WEST CAMERON AREA, REVISED

WC0028

LA

US

P.O.B.

TRACT 38406 - Portion of Block 1, East Cameron Area, Revised, and Block 32, West Cameron Area, Revised, Cameron Parish, Louisiana

The beds and bottoms of all water bodies belonging to the State of Louisiana located in Block 1, East Cameron Area, Revised, and Block 32, West Cameron Area, Revised, together with any present lands formed by accretion to the shoreline or islands formed therein, located in Cameron Parish, Louisiana, owned by and not presently under mineral lease as of July 12, 2006, from the State of Louisiana, the geographical area of which is more fully described as follows: Beginning at a point on the South line of Block 32, West Cameron Area, Revised, having Coordinates of X = 1,461,500.00 and Y = 379,032.19; thence North 11,869.38 feet to a point on the Coastline as per the Supreme Court Decree dated June 16, 1975, having Coordinates of X = 1,461,500.00 and Y = 390,901.57; thence along said Coastline the following courses: Southeasterly on a straight line to a point having Coordinates of X = 1,467,685.00 and Y = 388,820.00 and Southeasterly on a straight line to the Northwest corner of State Lease No. 18597 having Coordinates of X = 1,469,122.08 and Y = 388,241.93; thence South 02 degrees 10 minutes 48 seconds West 4,582.71 feet along the West line of said State Lease No. 18597 to a point on the Western boundary of State Lease No. 1170, as amended, having Coordinates of X = 1,468,947.77 and Y = 383,662.54; thence along the Western boundary of said State Lease No. 1170, as amended, the following courses: South 17 degrees 18 minutes 00 seconds West 383.89 feet to a point having Coordinates of X = 1,468,833.61 and Y = 383,296.02; South 41 degrees 48 minutes 27 seconds West 1,088.26 feet to a point having Coordinates of X = 1,468,108.14 and Y = 382,484.84; South 28 degrees 42 minutes 39 seconds West 1,578.41 feet to a point having Coordinates of X = 1,467,349.89 and Y = 381,100.49; and South 45 degrees 32 minutes 38 seconds West 2,953.18 feet to the Southeast corner of said Block 32 having Coordinates of X = 1,465,241.95 and Y = 379,032.19; thence West 3,741.95 feet along the South line of said Block 32 to the Point of Beginning, containing **1,649.20 acres**, all as more particularly outlined on a plat on file in the Office of Mineral Resources, Department of Natural Resources. All bearings, distances and coordinates are based on Louisiana Coordinate System of 1927, (North or South Zone).

NOTE: The above description of the Tract nominated for lease has been provided and corrected, where required, exclusively by the nomination party. Any mineral lease selected from this Tract and awarded by the Louisiana State Mineral Board shall be without warranty of any kind, either express, implied, or statutory, including, but not limited to, the implied warranties of merchantability and fitness for a particular purpose. Should the mineral lease awarded by the Louisiana State Mineral Board be subsequently modified, cancelled or abrogated due to the existence of conflicting leases, operating agreements, private claims or other future obligations or conditions which may affect all or any portion of the leased Tract, it shall not relieve the Lessee of the obligation to pay any bonus due thereon to the Louisiana State Mineral Board, nor shall the Louisiana State Mineral Board be obligated to refund any consideration

paid by the Lessor prior to such modification, cancellation, or abrogation, including, but not limited to, bonuses, rentals and royalties.

NOTE: The State of Louisiana does hereby reserve, and this lease shall be subject to, the imprescriptible right of surface use in the nature of a servitude in favor of the Department of Natural Resources, including its Offices and Commissions, for the sole purpose of implementing, constructing, servicing and maintaining approved coastal zone management and/or restoration projects. Utilization of any and all rights derived under this lease by the mineral lessee, its agents, successors or assigns, shall not interfere with nor hinder the reasonable surface use by the Department of Natural Resources, its Offices or Commissions, as herein above reserved.

Applicant: MOUTON LAND SERVICES

Bidder	Cash Payment	Price/ Acre	Rental	Oil	Gas	Other

Legend

- 06070009
- Blocks
- Active_Leases
- Counties



CAMERON PARISH

SL 18616

SL 18597

EAST CAMERON AREA, REVISED

EC0001

SL 1170

P.O.B.

WEST CAMERON AREA, REVISED

WC0032

WC0033

LA

US