

TRACT 37591 - Portion of Block 34, Main Pass Area, Revised, Plaquemines Parish, Louisiana

All of the lands now or formerly constituting the beds and bottoms of all water bodies of every nature and description the title of which vests in the State of Louisiana, together with all islands arising therein and other lands formed by accretion or by reliction, where allowed by law, excepting tax adjudicated lands, and not presently under mineral lease on July 13, 2005, situated in Plaquemines Parish, Louisiana, and more particularly described as follows: Beginning at a point within Block 34, Main Pass Area, Revised having Coordinates of X = 2,600,721.00 and Y = 288,830.00; thence South 4,000.00 feet to a point having Coordinates of X = 2,600,721.00 and Y = 284,830.00; thence West approximately 3,773 feet to a point on State Lease No. 1349, as amended; thence along the boundary of said State Lease No. 1349 Westerly approximately 2,350 feet to a point being the Northwest corner of said State Lease No. 1349 and being on the East boundary line of State Lease No. 195, as amended; thence along the East boundary of said State Lease No. 195 Northerly approximately 3,610 feet to a point having a coordinate of X = 2,595,726.79; thence East approximately 4,994 feet to the point of beginning, **LESS AND EXCEPT** any portion of State Lease No. 195, as amended, and State Lease No. 1349, as amended which may lie within the above described tract containing approximately **488 acres**, all as more particularly outlined on a plat on file in the Office of Mineral Resources, Department of Natural Resources. All bearings, distances and coordinates are based on Louisiana Coordinate System of 1927, (North or South Zone), where applicable.

NOTE: The above description of the Tract nominated for lease has been provided and corrected, where required, exclusively by the nomination party. Any mineral lease selected from this Tract and awarded by the Louisiana State Mineral Board shall be without warranty of any kind, either express, implied, or statutory, including, but not limited to, the implied warranties of merchantability and fitness for a particular purpose. Should the mineral lease awarded by the Louisiana State Mineral Board be subsequently modified, cancelled or abrogated due to the existence of conflicting leases, operating agreements, private claims or other future obligations or conditions which may affect all or any portion of the leased Tract, it shall not relieve the Lessee of the obligation to pay any bonus due thereon to the Louisiana State Mineral Board, nor shall the Louisiana State Mineral Board be obligated to refund any consideration paid by the Lessor prior to such modification, cancellation, or abrogation, including, but not limited to, bonuses, rentals and royalties.

NOTE: The State of Louisiana does hereby reserve, and this lease shall be subject to, the imprescriptible right of surface use in the nature of a servitude in favor of the Department of Natural Resources, including its Offices and Commissions, for the sole purpose of implementing, constructing, servicing and maintaining approved coastal zone management and/or restoration projects. Utilization of any and all rights derived under this lease by the mineral lessee, its agents, successors or assigns,

shall not interfere with nor hinder the reasonable surface use by the Department of Natural Resources, its Offices or Commissions, as herein above reserved.

Applicant: SUNCOAST LAND SERVICES, INC.

Bidder	Cash Payment	Price/Acre	Rental	Oil	Gas	Other



PLAQUEMINES PARISH

MAIN PASS AREA, REVISED

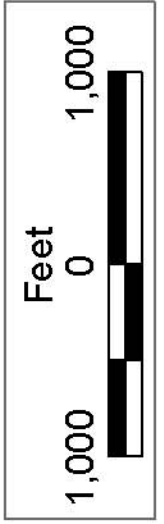
BLOCK MP0034

P.O.B.
X=2,600,721.00
Y=288,830.00

SL 195

SL 1349

SL 15941



TRACT 37592 - Plaquemines Parish, Louisiana

All of the lands now or formerly constituting the beds and bottoms of all water bodies of every nature and description the title of which vests in the State of Louisiana, together with all islands arising therein and other lands formed by accretion or by reliction, where allowed by law, excepting tax adjudicated lands, and not presently under mineral lease on July 13, 2005, situated in Plaquemines Parish, Louisiana, and more particularly described as follows: Beginning at a point having Coordinates of X = 2,448,100.00 and Y = 284,700.00; thence East 6,811.06 feet to a point on the boundary of State Lease No. 18047 having Coordinates of X = 2,454,911.06 and Y = 284,700.00; thence along the boundary of said State Lease No. 18047 the following courses: South 55 degrees 11 minutes 13 seconds West 1,438.53 to a point having Coordinates of X = 2,453,730.00 and Y = 283,878.74, South 01 degrees 50 minutes 28 seconds East 3,094.35 feet to a point having Coordinates of X = 2,453,829.41 and Y = 280,785.99, East 3,996.79 feet to a point having Coordinates of X = 2,457,826.20 and Y = 280,785.99 and North 67 degrees 52 minutes 54 seconds East 479.06 feet to a point having Coordinates of X = 2,458,270.00 and Y = 280,966.37; thence South 8,566.37 feet to a point having Coordinates of X = 2,458,270.00 and Y = 272,400.00; thence West 10,170.00 feet to a point having Coordinates of X = 2,448,100.00 and Y = 272,400.00; thence North 12,300.00 feet to the point of beginning, containing approximately **2,427 acres**, all as more particularly outlined on a plat on file in the Office of Mineral Resources, Department of Natural Resources. All bearings, distances and coordinates are based on Louisiana Coordinate System of 1927, (North or South Zone), where applicable.

NOTE: The above description of the Tract nominated for lease has been provided and corrected, where required, exclusively by the nomination party. Any mineral lease selected from this Tract and awarded by the Louisiana State Mineral Board shall be without warranty of any kind, either express, implied, or statutory, including, but not limited to, the implied warranties of merchantability and fitness for a particular purpose. Should the mineral lease awarded by the Louisiana State Mineral Board be subsequently modified, cancelled or abrogated due to the existence of conflicting leases, operating agreements, private claims or other future obligations or conditions which may affect all or any portion of the leased Tract, it shall not relieve the Lessee of the obligation to pay any bonus due thereon to the Louisiana State Mineral Board, nor shall the Louisiana State Mineral Board be obligated to refund any consideration paid by the Lessor prior to such modification, cancellation, or abrogation, including, but not limited to, bonuses, rentals and royalties.

NOTE: The State of Louisiana does hereby reserve, and this lease shall be subject to, the imprescriptible right of surface use in the nature of a servitude in favor of the Department of Natural Resources, including its Offices and Commissions, for the sole purpose of implementing, constructing, servicing and maintaining approved coastal zone management and/or restoration projects. Utilization of any and all rights derived

under this lease by the mineral lessee, its agents, successors or assigns, shall not interfere with nor hinder the reasonable surface use by the Department of Natural Resources, its Offices or Commissions, as herein above reserved.

NOTE: The Department of Wildlife and Fisheries has designated certain areas in the coastal waters of the State of Louisiana as Oyster Seed Bed Areas. The exact location of those Seed Bed Areas must be obtained from the Department of Wildlife and Fisheries and any work done under a mineral lease from the State of Louisiana may necessarily be conducted in conformity with the rules and regulations promulgated by the said Department of Wildlife and Fisheries for Oyster Seed Bed Areas.

Applicant: ONEPRES RESOURCES

Bidder	Cash Payment	Price/Acre	Rental	Oil	Gas	Other



SL 17376

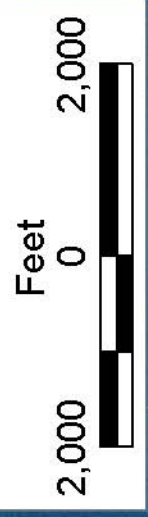
SL 18047

P.O.B.
X=2,448,100.00
Y=284,700.00

SL 3035

PLAQUEMINES PARISH

BARATARIA BAY



TRACT 37593 - Jefferson and Plaquemines Parishes, Louisiana

All of the lands now or formerly constituting the beds and bottoms of all water bodies of every nature and description the title of which vests in the State of Louisiana, together with all islands arising therein and other lands formed by accretion or by reliction, where allowed by law, excepting tax adjudicated lands, and not presently under mineral lease on July 13, 2005, situated in Jefferson and Plaquemines Parishes, Louisiana, and more particularly described as follows: Beginning at a point having Coordinates of X = 2,448,100.00 and Y = 284,700.00; thence South 12,300.00 feet to a point having Coordinates of X = 2,448,100.00 and Y = 272,400.00; thence West 12,967.98 feet to point on the East line of State Lease No. 15631 having Coordinates of X = 2,435,132.02 and Y = 272,400.00; thence North 2,439.40 feet along the East line of said State Lease No. 15631 to the Southwest corner of State Lease No. 14534, having Coordinates of X = 2,435,132.02 and Y = 274,839.40; thence East 3,027.18 feet along the South line of said State Lease No. 14534 to its Southeast corner, said corner also being a point on the West line of State Lease No. 14374, having Coordinates of X = 2,438,159.20 and Y = 274,839.40; thence South 00 degrees 38 minutes 42 seconds East 926.14 feet along the West line of said State Lease No. 14374 to its Southwest corner, having Coordinates of X = 2,438,169.63 and Y = 273,913.32; thence South 87 degrees 51 minutes 11 seconds East 1,007.65 feet along the South line of said State Lease No. 14374 to its Southeast corner, said corner also being a point on the West line of State Lease No. 3035, as amended, having Coordinates of X = 2,439,176.57 and Y = 273,875.57; thence along the boundary of said State Lease No. 3035 the following courses: South 00 degrees 41 minutes 53 seconds East 489.89 feet to a point, North 89 degrees 18 minutes 14 seconds East 6,120.03 feet to a point, North 30 degrees 28 minutes 03 seconds East 301.59 feet to a point, North 20 degrees 28 minutes 03 seconds East 757.80 feet to a point, North 14 degrees 25 minutes 15 seconds East 361.40 feet to a point, North 08 degrees 30 minutes 16 seconds East 541.00 feet to a point, North 00 degrees 52 minutes 53 seconds East 325.00 feet to a point, North 11 degrees 01 minutes 46 seconds West 601.10 feet to a point, North 23 degrees 22 minutes 27 seconds West 642.80 feet to a point, North 29 degrees 58 minutes 54 seconds West 450.30 feet to a point, North 36 degrees 28 minutes 09 seconds West 429.00 feet to a point, North 46 degrees 50 minutes 51 seconds West 329.00 feet to a point, South 42 degrees 21 minutes 27 seconds West 690.20 feet to a point, North 44 degrees 39 minutes 25 seconds West 590.40 feet to a point, North 53 degrees 26 minutes 25 seconds West 554.00 feet to a point, North 63 degrees 26 minutes 06 seconds West 246.00 feet to a point, North 73 degrees 04 minutes 21 seconds West 480.80 feet to a point, North 57 degrees 15 minutes 53 seconds West 166.40 feet to a point, North 34 degrees 41 minutes 43 seconds West 158.10 Feet to a point, North 33 degrees 05 minutes 30 seconds West 531.20 feet to a point, North 39 degrees 43 minutes 08 seconds West 422.50 feet to a point, North 52 degrees 01 minutes 42 seconds West 520.10 feet to a point, North 61 degrees 23 minutes 22 seconds West 501.20 feet to a point, North 72 degrees 58 minutes 46

seconds West 512.50 feet to a point, North 77 degrees 54 minutes 19 seconds West 429.50 feet to a point, North 81 degrees 50 minutes 30 seconds West 1,162.50 feet to a point and South 00 degrees 41 minutes 53 seconds East 2,349.54 feet to the Northeast corner of said State Lease No. 14374, having Coordinates of X = 2,439,127.83 and Y = 277,875.60; thence West 1,002.82 feet along the North line of said State Lease No. 14374 to its Northwest corner having Coordinates of X = 2,438,125.02 and Y = 277,875.60; thence South 00 degrees 38 minutes 42 seconds East 333.69 feet along the West line of said State Lease No. 14374 to the Northeast corner of said State Lease No. 14534, having Coordinates of X = 2,438,128.78 and Y = 277,541.93; thence West 2,996.76 feet along the North of said State Lease No. 14534 to its Northwest corner having Coordinates of X = 2,435,132.02 and Y = 277,541.93; thence North 7,158.07 feet to a point having Coordinates of X = 2,435,132.02 and Y = 284,700.00; thence East 12,967.98 feet to the point of beginning, containing approximately **2,493 acres**, all as more particularly outlined on a plat on file in the Office of Mineral Resources, Department of Natural Resources. All bearings, distances and coordinates are based on Louisiana Coordinate System of 1927, (North or South Zone), where applicable.

NOTE: The above description of the Tract nominated for lease has been provided and corrected, where required, exclusively by the nomination party. Any mineral lease selected from this Tract and awarded by the Louisiana State Mineral Board shall be without warranty of any kind, either express, implied, or statutory, including, but not limited to, the implied warranties of merchantability and fitness for a particular purpose. Should the mineral lease awarded by the Louisiana State Mineral Board be subsequently modified, cancelled or abrogated due to the existence of conflicting leases, operating agreements, private claims or other future obligations or conditions which may affect all or any portion of the leased Tract, it shall not relieve the Lessee of the obligation to pay any bonus due thereon to the Louisiana State Mineral Board, nor shall the Louisiana State Mineral Board be obligated to refund any consideration paid by the Lessor prior to such modification, cancellation, or abrogation, including, but not limited to, bonuses, rentals and royalties.

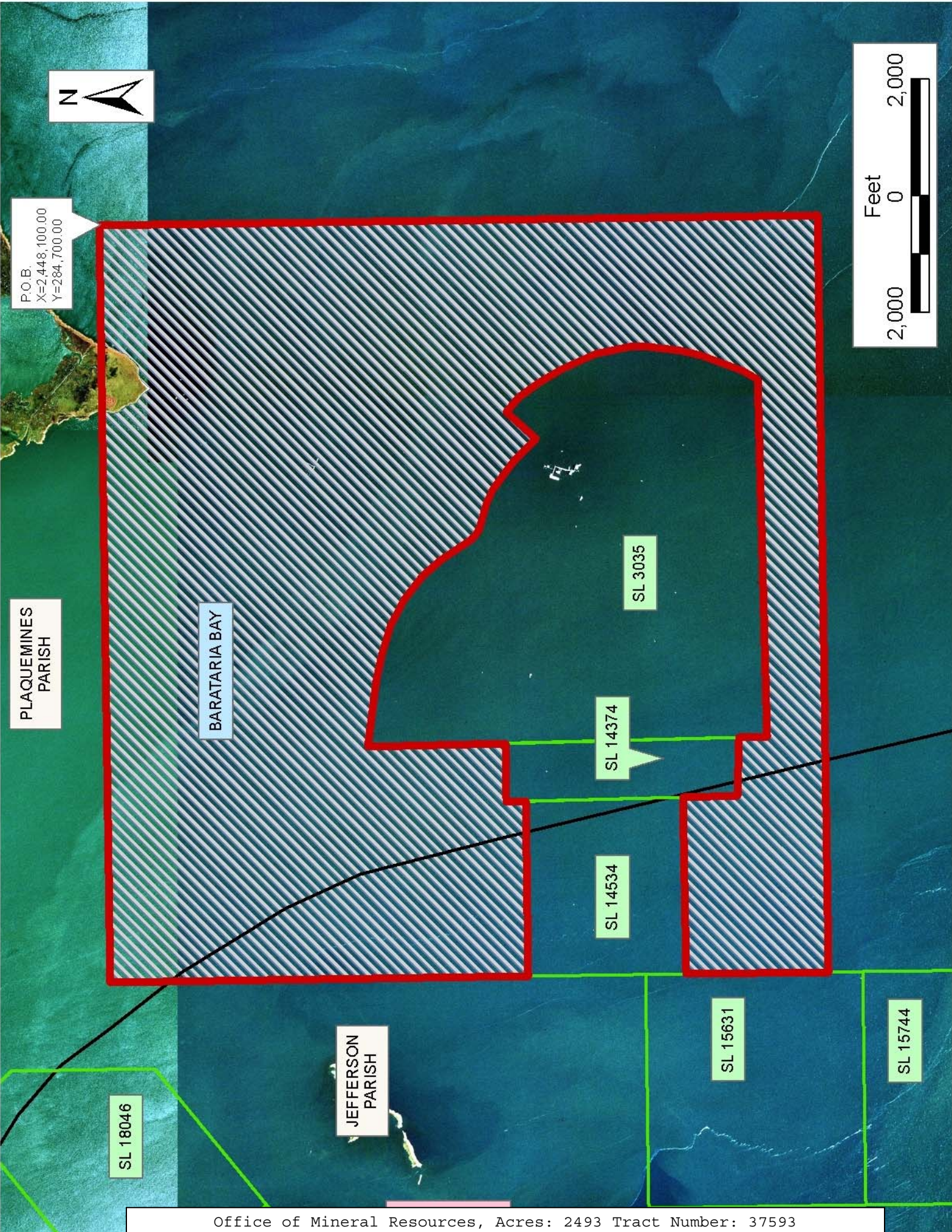
NOTE: The State of Louisiana does hereby reserve, and this lease shall be subject to, the imprescriptible right of surface use in the nature of a servitude in favor of the Department of Natural Resources, including its Offices and Commissions, for the sole purpose of implementing, constructing, servicing and maintaining approved coastal zone management and/or restoration projects. Utilization of any and all rights derived under this lease by the mineral lessee, its agents, successors or assigns, shall not interfere with nor hinder the reasonable surface use by the Department of Natural Resources, its Offices or Commissions, as herein above reserved.

NOTE: The Department of Wildlife and Fisheries has designated certain areas in the coastal waters of the State of Louisiana as Oyster Seed Bed

Areas. The exact location of those Seed Bed Areas must be obtained from the Department of Wildlife and Fisheries and any work done under a mineral lease from the State of Louisiana may necessarily be conducted in conformity with the rules and regulations promulgated by the said Department of Wildlife and Fisheries for Oyster Seed Bed Areas.

Applicant: ONEPRES RESOURCES

Bidder	Cash Payment	Price/Acre	Rental	Oil	Gas	Other



P.O.B.
X=2448,100.00
Y=284,700.00

PLAQUEMINES
PARISH

BARATARIA BAY

JEFFERSON
PARISH

SL 18046

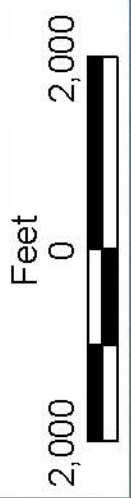
SL 14534

SL 14374

SL 3035

SL 15631

SL 15744



TRACT 37594 - Lafourche Parish, Louisiana

All of the lands now or formerly constituting the beds and bottoms of all water bodies of every nature and description the title of which vests in the State of Louisiana, together with all islands arising therein and other lands formed by accretion or by reliction, where allowed by law, excepting tax adjudicated lands, and not presently under mineral lease on July 13, 2005, situated in Lafourche Parish, Louisiana, and more particularly described as follows: Beginning at a point having Coordinates of X = 2,380,185.00 and Y = 285,260.92; thence East 6,200.00 feet to a point having Coordinates of X = 2,386,385.00 and Y = 285,260.92; thence South 609.92 feet to the Northwest corner of State Lease No. 18406 having Coordinates of X = 2,386,385.00 and Y = 284,651.00; thence South 3,800.00 feet on the West line of said State Lease No. 18406 to its Southwest corner having Coordinates of X = 2,386,385.00 and Y = 280,851.00; thence South 6,150.47 feet to a point having Coordinates of X = 2,386,385.00 and Y = 274,700.53; thence West 6,200.00 feet to a point having Coordinates of X = 2,380,185.00 and Y = 274,700.53; thence North 4,482.47 feet to a point on the South line of State Lease No. 18442 having Coordinates of X = 2,380,185.00 and Y = 279,183.00; thence along the boundary of said State Lease No. 18442 the following courses: East 4,245.28 feet, North 01 degrees 41 minutes 38 seconds West 2,848.24 feet, and West 4,161.09 feet to a point having Coordinates of X = 2,380,185.00 and Y = 282,030.00; thence North 3,230.92 feet to the point of beginning, containing approximately **6 acres**, all as more particularly outlined on a plat on file in the Office of Mineral Resources, Department of Natural Resources. All bearings, distances and coordinates are based on Louisiana Coordinate System of 1927, (North or South Zone), where applicable.

NOTE: The above description of the Tract nominated for lease has been provided and corrected, where required, exclusively by the nomination party. Any mineral lease selected from this Tract and awarded by the Louisiana State Mineral Board shall be without warranty of any kind, either express, implied, or statutory, including, but not limited to, the implied warranties of merchantability and fitness for a particular purpose. Should the mineral lease awarded by the Louisiana State Mineral Board be subsequently modified, cancelled or abrogated due to the existence of conflicting leases, operating agreements, private claims or other future obligations or conditions which may affect all or any portion of the leased Tract, it shall not relieve the Lessee of the obligation to pay any bonus due thereon to the Louisiana State Mineral Board, nor shall the Louisiana State Mineral Board be obligated to refund any consideration paid by the Lessor prior to such modification, cancellation, or abrogation, including, but not limited to, bonuses, rentals and royalties.

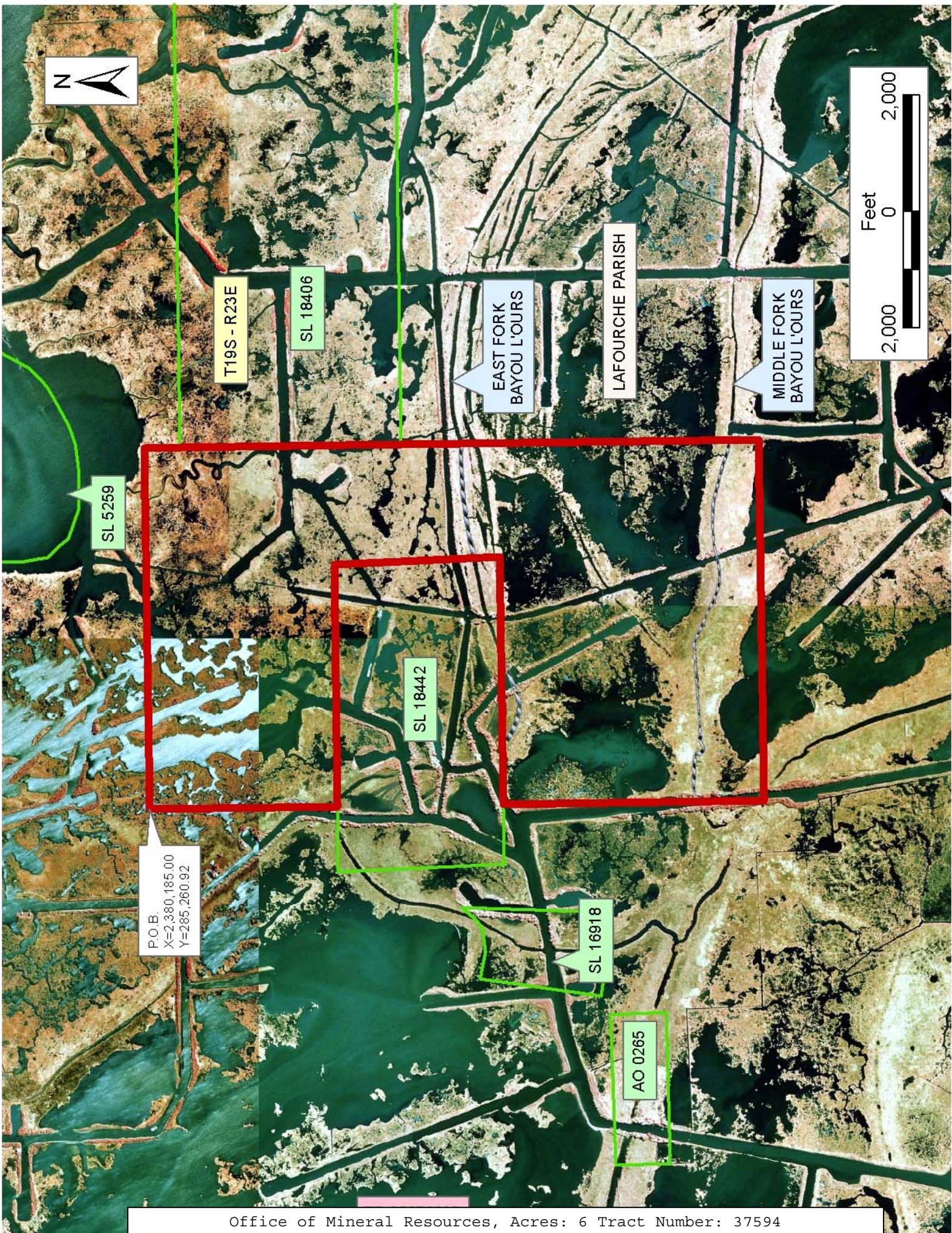
NOTE: The State of Louisiana does hereby reserve, and this lease shall be subject to, the imprescriptible right of surface use in the nature of a servitude in favor of the Department of Natural Resources, including its Offices and Commissions, for the sole purpose of implementing, constructing, servicing and maintaining approved coastal zone management

and/or restoration projects. Utilization of any and all rights derived under this lease by the mineral lessee, its agents, successors or assigns, shall not interfere with nor hinder the reasonable surface use by the Department of Natural Resources, its Offices or Commissions, as herein above reserved.

NOTE: The Department of Wildlife and Fisheries has designated certain areas in the coastal waters of the State of Louisiana as Oyster Seed Bed Areas. The exact location of those Seed Bed Areas must be obtained from the Department of Wildlife and Fisheries and any work done under a mineral lease from the State of Louisiana may necessarily be conducted in conformity with the rules and regulations promulgated by the said Department of Wildlife and Fisheries for Oyster Seed Bed Areas.

Applicant: DOYLE LAND SERVICES, INC.

Bidder	Cash Payment	Price/Acre	Rental	Oil	Gas	Other



POB
X=2,380,185.00
Y=285,260.92

SL 5259

T19S - R23E

SL 18406

EAST FORK
BAYOU L'OURS

LAFOURCHE PARISH

MIDDLE FORK
BAYOU L'OURS

SL 18442

SL 16918

AO 0265



TRACT 37595 - Lafourche Parish, Louisiana

All of the lands now or formerly constituting the beds and bottoms of all water bodies of every nature and description the title of which vests in the State of Louisiana, together with all islands arising therein and other lands formed by accretion or by reliction, where allowed by law, excepting tax adjudicated lands, and not presently under mineral lease on July 13, 2005, situated in Lafourche Parish, Louisiana, and more particularly described as follows: Beginning at a point having Coordinates of X = 2,380,185.00 and Y = 285,260.92; thence South 3,230.92 feet to a point on the North line of State Lease No. 18442 having Coordinates of X = 2,380,185.00 and Y = 282,030.00; thence along the boundary of said State Lease No. 18442 the following courses: West 1,121.22 feet, South 01 degrees 41 minutes 38 seconds East 2,848.24 feet, and East 1,037.03 feet to a point having Coordinates of X = 2,380,185.00 and Y = 279,183.00; thence South 4,482.47 feet to a point having Coordinates of X = 2,380,185.00 and Y = 274,700.53; thence West 6,161.54 feet to a point having Coordinates of X = 2,374,023.46 and Y = 274,700.53; thence North 01 degrees 46 minutes 19 seconds West approximately 1,980 feet to a point on the South line of Operating Agreement AO 0265; thence along the boundary of said Operating Agreement AO 0265 the following courses: Easterly approximately 2,629 feet, Northerly approximately 662 feet, and Westerly approximately 2,629 feet to a point on the North line of said Operating Agreement 0265; thence North 01 degrees 46 minutes 19 seconds West approximately 7,925 feet to a point having Coordinates of X = 2,373,696.77 and Y = 285,260.92; thence East 6,488.23 feet to the point of beginning, **LESS AND EXCEPT** that portion of State Lease No. 16918, as amended that lies within the above described tract as follows: Beginning at a point having Coordinates of X = 2,377,190.65 and Y = 279,622.09; thence South 77 degrees 04 minutes 59 seconds East 431.37 feet to a point having Coordinates of X = 2,377,650.09 and Y = 279,516.72; thence North 82 degrees 32 minutes 18 seconds East 397.19 feet to a point having Coordinates of X = 2,378,043.92 and Y = 279,568.30; thence North 64 degrees 43 minutes 50 seconds East 47.27 feet to a point having Coordinates of X = 2,378,086.67 and Y = 279,588.48; thence North 54 degrees 41 minutes 46 seconds East 128.13 feet to a point having Coordinates of X = 2,378,191.24 and Y = 279,662.53; thence North 41 degrees 06 minutes 16 seconds East 351.69 feet to a point having Coordinates of X = 2,378,422.45 and Y = 279,927.53; thence South 02 degrees 44 minutes 07 seconds West 2,530.41 feet to a point having Coordinates of X = 2,378,301.69 and Y = 277,400.00; thence West 483.63 feet to a point having Coordinates of X = 2,377,818.06 and Y = 277,400.00; thence North 81 degrees 41 minutes 12 seconds West 967.59 feet to a point having Coordinates of X = 2,376,860.64 and Y = 277,539.90; thence North 09 degrees 00 minutes 22 seconds East 2,108.18 feet to the point of beginning **LESS AND EXCEPT** that portion, if any, of AO 0265 which may lie in the above described tract, containing approximately **14 acres**, all as more particularly outlined on a plat on file in the Office of Mineral Resources, Department of Natural Resources. All bearings, distances and

coordinates are based on Louisiana Coordinate System of 1927, (North or South Zone), where applicable.

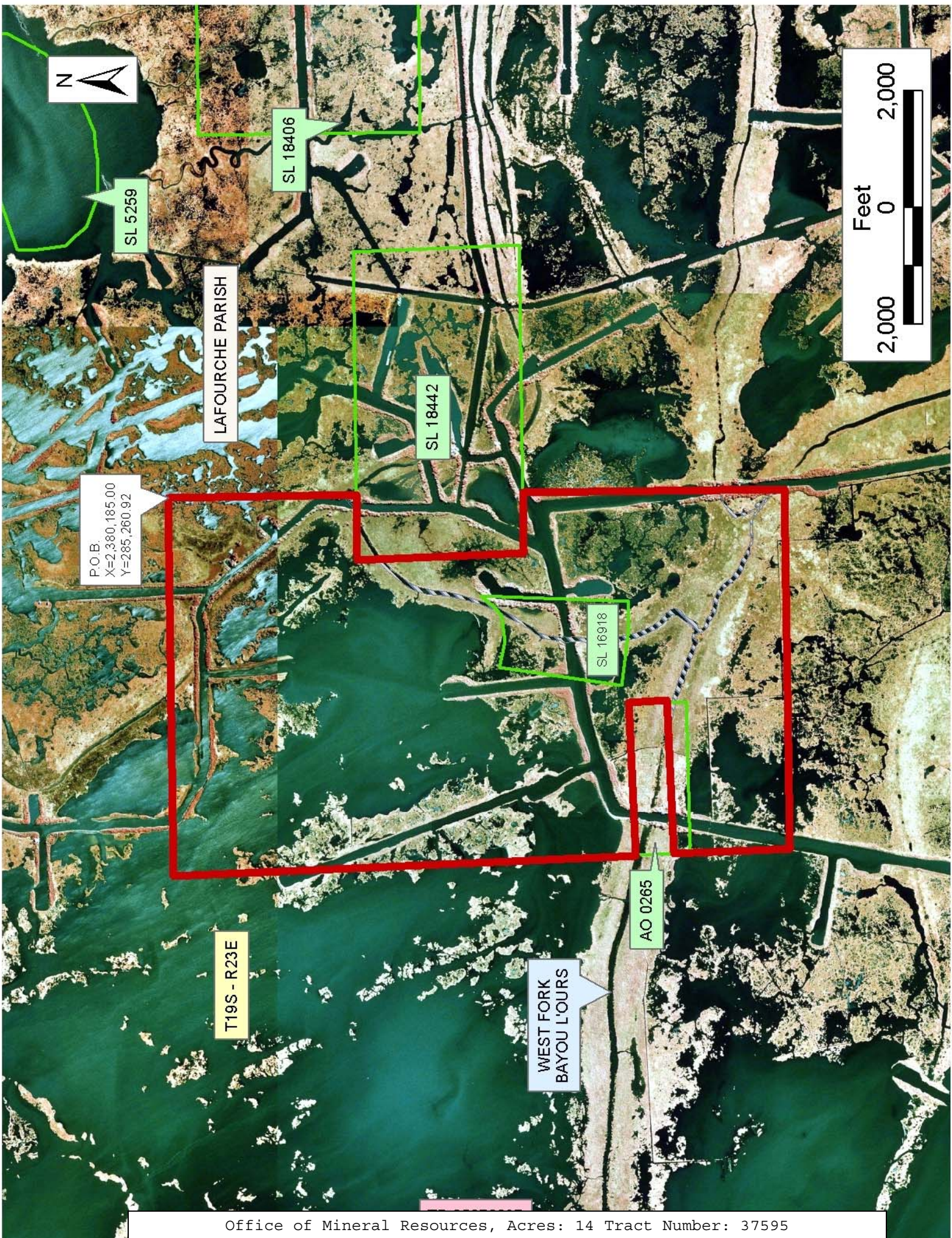
NOTE: The above description of the Tract nominated for lease has been provided and corrected, where required, exclusively by the nomination party. Any mineral lease selected from this Tract and awarded by the Louisiana State Mineral Board shall be without warranty of any kind, either express, implied, or statutory, including, but not limited to, the implied warranties of merchantability and fitness for a particular purpose. Should the mineral lease awarded by the Louisiana State Mineral Board be subsequently modified, cancelled or abrogated due to the existence of conflicting leases, operating agreements, private claims or other future obligations or conditions which may affect all or any portion of the leased Tract, it shall not relieve the Lessee of the obligation to pay any bonus due thereon to the Louisiana State Mineral Board, nor shall the Louisiana State Mineral Board be obligated to refund any consideration paid by the Lessor prior to such modification, cancellation, or abrogation, including, but not limited to, bonuses, rentals and royalties.

NOTE: The State of Louisiana does hereby reserve, and this lease shall be subject to, the imprescriptible right of surface use in the nature of a servitude in favor of the Department of Natural Resources, including its Offices and Commissions, for the sole purpose of implementing, constructing, servicing and maintaining approved coastal zone management and/or restoration projects. Utilization of any and all rights derived under this lease by the mineral lessee, its agents, successors or assigns, shall not interfere with nor hinder the reasonable surface use by the Department of Natural Resources, its Offices or Commissions, as herein above reserved.

NOTE: The Department of Wildlife and Fisheries has designated certain areas in the coastal waters of the State of Louisiana as Oyster Seed Bed Areas. The exact location of those Seed Bed Areas must be obtained from the Department of Wildlife and Fisheries and any work done under a mineral lease from the State of Louisiana may necessarily be conducted in conformity with the rules and regulations promulgated by the said Department of Wildlife and Fisheries for Oyster Seed Bed Areas.

Bidder	Cash Payment	Price/Acre	Rental	Oil	Gas	Other

Applicant: DOYLE LAND SERVICES, INC.



TRACT 37596 - Lafourche Parish, Louisiana

All of the lands now or formerly constituting the beds and bottoms of all water bodies of every nature and description the title of which vests in the State of Louisiana, together with all islands arising therein and other lands formed by accretion or by reliction, where allowed by law, excepting tax adjudicated lands, and not presently under mineral lease on July 13, 2005, situated in Lafourche Parish, Louisiana, and more particularly described as follows: Beginning at a point having Coordinates of X = 2,357,826.09 and Y = 284,789.93; thence North 88 degrees 18 minutes 01 seconds East 15,877.66 feet to a point having Coordinates of X = 2,373,696.77 and Y = 285,260.92; thence South 01 degrees 46 minutes 19 seconds East 5,282.72 feet to a point having Coordinates of X = 2,373,860.12 and Y = 279,980.72; thence South 88 degrees 17 minutes 11 seconds West 15,885.44 feet to a point having Coordinates of X = 2,357,981.78 and Y = 279,505.67; thence North 01 degrees 41 minutes 15 seconds West 5,286.55 feet to the point of beginning, containing approximately **57 acres**, all as more particularly outlined on a plat on file in the Office of Mineral Resources, Department of Natural Resources. All bearings, distances and coordinates are based on Louisiana Coordinate System of 1927, (North or South Zone), where applicable.

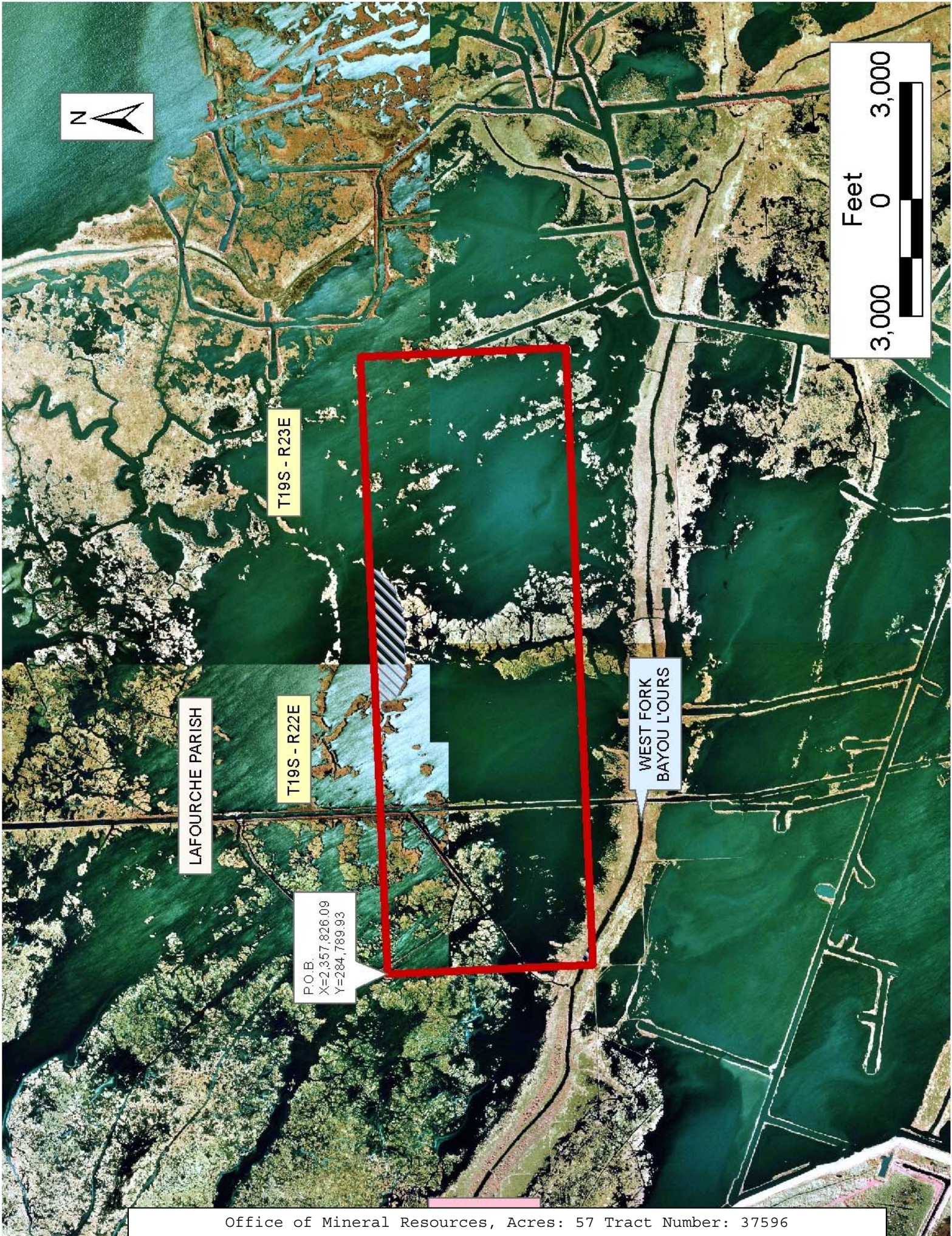
NOTE: The above description of the Tract nominated for lease has been provided and corrected, where required, exclusively by the nomination party. Any mineral lease selected from this Tract and awarded by the Louisiana State Mineral Board shall be without warranty of any kind, either express, implied, or statutory, including, but not limited to, the implied warranties of merchantability and fitness for a particular purpose. Should the mineral lease awarded by the Louisiana State Mineral Board be subsequently modified, cancelled or abrogated due to the existence of conflicting leases, operating agreements, private claims or other future obligations or conditions which may affect all or any portion of the leased Tract, it shall not relieve the Lessee of the obligation to pay any bonus due thereon to the Louisiana State Mineral Board, nor shall the Louisiana State Mineral Board be obligated to refund any consideration paid by the Lessor prior to such modification, cancellation, or abrogation, including, but not limited to, bonuses, rentals and royalties.

NOTE: The State of Louisiana does hereby reserve, and this lease shall be subject to, the imprescriptible right of surface use in the nature of a servitude in favor of the Department of Natural Resources, including its Offices and Commissions, for the sole purpose of implementing, constructing, servicing and maintaining approved coastal zone management and/or restoration projects. Utilization of any and all rights derived under this lease by the mineral lessee, its agents, successors or assigns, shall not interfere with nor hinder the reasonable surface use by the Department of Natural Resources, its Offices or Commissions, as herein above reserved.

NOTE: The Department of Wildlife and Fisheries has designated certain areas in the coastal waters of the State of Louisiana as Oyster Seed Bed Areas. The exact location of those Seed Bed Areas must be obtained from the Department of Wildlife and Fisheries and any work done under a mineral lease from the State of Louisiana may necessarily be conducted in conformity with the rules and regulations promulgated by the said Department of Wildlife and Fisheries for Oyster Seed Bed Areas.

Applicant: DOYLE LAND SERVICES, INC.

Bidder	Cash Payment	Price/Acre	Rental	Oil	Gas	Other



TRACT 37597 - Plaquemines Parish, Louisiana

All of the lands now or formerly constituting the beds and bottoms of all water bodies of every nature and description the title of which vests in the State of Louisiana, together with all islands arising therein and other lands formed by accretion or by reliction, where allowed by law, excepting tax adjudicated lands, and not presently under mineral lease on July 13, 2005, situated in Plaquemines Parish, Louisiana, and more particularly described as follows: Beginning at a point having Coordinates of X = 2,458,270.00 and Y = 272,400.00; thence North 8,566.37 feet to a point on the boundary line of State Lease No. 18047, having Coordinates of X = 2,458,270.00 and Y = 280,966.37; thence along the boundary of said State Lease No. 18047 the following courses: North 67 degrees 52 minutes 54 seconds East 3,058.19 feet to a point having Coordinates of X = 2,461,103.13 and Y = 282,117.84 and North 39 degrees 51 minutes 50 seconds East 1,772.30 feet to a point on the boundary of State Lease No. 17376, having Coordinates of X = 2,462,239.12 and Y = 283,478.20; thence South 61 degrees 13 minutes 59 seconds East 2,328.23 feet along the boundary of said State Lease No. 17376 to the Northwest corner of State Lease No. 18147 having Coordinates of X = 2,464,280.01 and Y = 282,357.75; thence along the boundary of said State Lease No. 18147 the following courses: South 1,559.87 feet to a point having Coordinates of X = 2,464,280.01 and Y = 280,797.88 and East 3,744.00 feet to a point on the boundary of State Lease No. 17856, having Coordinates of X = 2,468,024.01 and Y = 280,797.88; thence along the boundary of said State Lease No. 17856 the following courses: South 57 degrees 26 minutes 02 seconds West 2,757.58 feet to a point having Coordinates of X = 2,465,700.00 and Y = 279,313.55, North 87 degrees 13 minutes 26 seconds East 1,495.76 feet to a point having Coordinates of X = 2,467,194.00 and Y = 279,386.00, South 64 degrees 06 minutes 41 seconds East 1,340.53 feet to a point having Coordinates of X = 2,468,400.00 and Y = 278,800.70 and North 88 degrees 39 minutes 39 seconds East approximately 8,831 to a point on the boundary of State Lease No. 2028, as amended; thence along the boundary of said State Lease No. 2028, as amended, the following courses: Southerly approximately 3,971 feet to a corner, Westerly approximately 4,466 feet to a corner, and Southerly approximately 570 feet to the most Easterly Northeast corner of State Lease No. 18148; thence along the boundary of said State Lease No. 18148 the following courses: North 54 degrees 12 minutes 59 seconds West approximately 2,718 feet to a point having Coordinates of X = 2,470,617.55 and Y = 276,000.00, West 6,171.55 feet to a point having Coordinates of X = 2,464,446.00 and Y = 276,000.00 and South 3,600.00 feet to a point having Coordinates of X = 2,464,446.00 and Y = 272,400.00; thence West 6,176.00 feet to the point of beginning, containing approximately **2,260 acres**, all as more particularly outlined on a plat on file in the Office of Mineral Resources, Department of Natural Resources. All bearings, distances and coordinates are based on Louisiana Coordinate System of 1927, (North or South Zone), where applicable.

NOTE: The above description of the Tract nominated for lease has been provided and corrected, where required, exclusively by the nomination

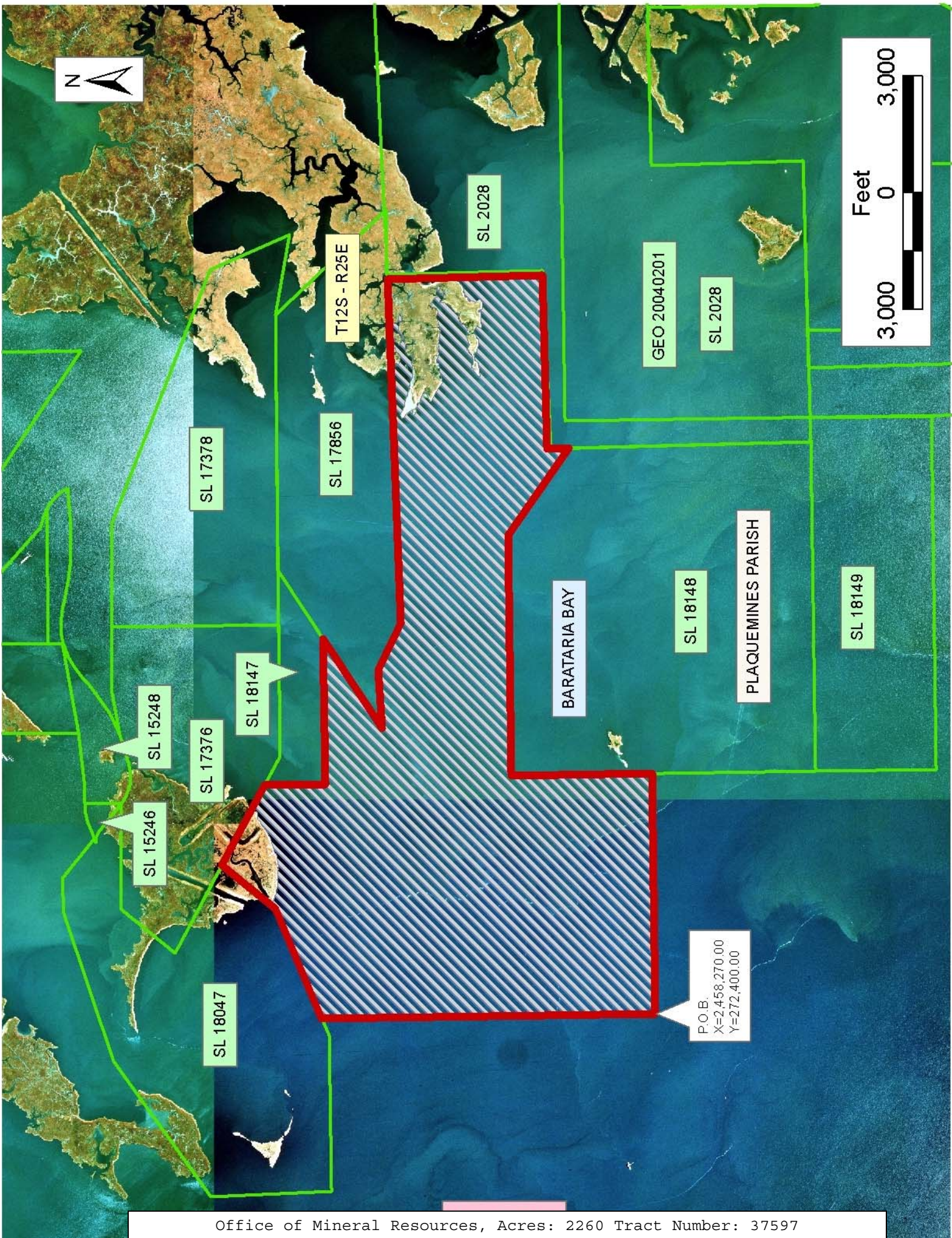
party. Any mineral lease selected from this Tract and awarded by the Louisiana State Mineral Board shall be without warranty of any kind, either express, implied, or statutory, including, but not limited to, the implied warranties of merchantability and fitness for a particular purpose. Should the mineral lease awarded by the Louisiana State Mineral Board be subsequently modified, cancelled or abrogated due to the existence of conflicting leases, operating agreements, private claims or other future obligations or conditions which may affect all or any portion of the leased Tract, it shall not relieve the Lessee of the obligation to pay any bonus due thereon to the Louisiana State Mineral Board, nor shall the Louisiana State Mineral Board be obligated to refund any consideration paid by the Lessor prior to such modification, cancellation, or abrogation, including, but not limited to, bonuses, rentals and royalties.

NOTE: The State of Louisiana does hereby reserve, and this lease shall be subject to, the imprescriptible right of surface use in the nature of a servitude in favor of the Department of Natural Resources, including its Offices and Commissions, for the sole purpose of implementing, constructing, servicing and maintaining approved coastal zone management and/or restoration projects. Utilization of any and all rights derived under this lease by the mineral lessee, its agents, successors or assigns, shall not interfere with nor hinder the reasonable surface use by the Department of Natural Resources, its Offices or Commissions, as herein above reserved.

NOTE: The Department of Wildlife and Fisheries has designated certain areas in the coastal waters of the State of Louisiana as Oyster Seed Bed Areas. The exact location of those Seed Bed Areas must be obtained from the Department of Wildlife and Fisheries and any work done under a mineral lease from the State of Louisiana may necessarily be conducted in conformity with the rules and regulations promulgated by the said Department of Wildlife and Fisheries for Oyster Seed Bed Areas.

Applicant: ONEPRES RESOURCES

Bidder	Cash Payment	Price/Acre	Rental	Oil	Gas	Other



TRACT 37598 - Lafourche Parish, Louisiana

All of the lands now or formerly constituting the beds and bottoms of all water bodies of every nature and description the title of which vests in the State of Louisiana, together with all islands arising therein and other lands formed by accretion or by reliction, where allowed by law, excepting tax adjudicated lands, and not presently under mineral lease on July 13, 2005, situated in Lafourche Parish, Louisiana, and more particularly described as follows: Beginning at a point having Coordinates of X = 2,360,675.81 and Y = 274,301.19; thence North 01 degrees 41 minutes 15 seconds West 5,282.72 feet to a point having Coordinates of X = 2,360,520.24 and Y = 279,581.62; thence North 88 degrees 17 minutes 11 seconds East 13,345.85 feet to a point having Coordinates of X = 2,373,860.12 and Y = 279,980.72; thence South 01 degrees 46 minutes 19 seconds East 5,282.72 feet to a point having Coordinates of X = 2,374,023.46 and Y = 274,700.53; thence South 88 degrees 17 minutes 11 seconds West 13,353.62 feet to the point of beginning, **LESS AND EXCEPT** any portion of Operating Agreement 0265 that may lie within the described tract, containing approximately **31 acres**, all as more particularly outlined on a plat on file in the Office of Mineral Resources, Department of Natural Resources. All bearings, distances and coordinates are based on Louisiana Coordinate System of 1927, (North or South Zone), where applicable.

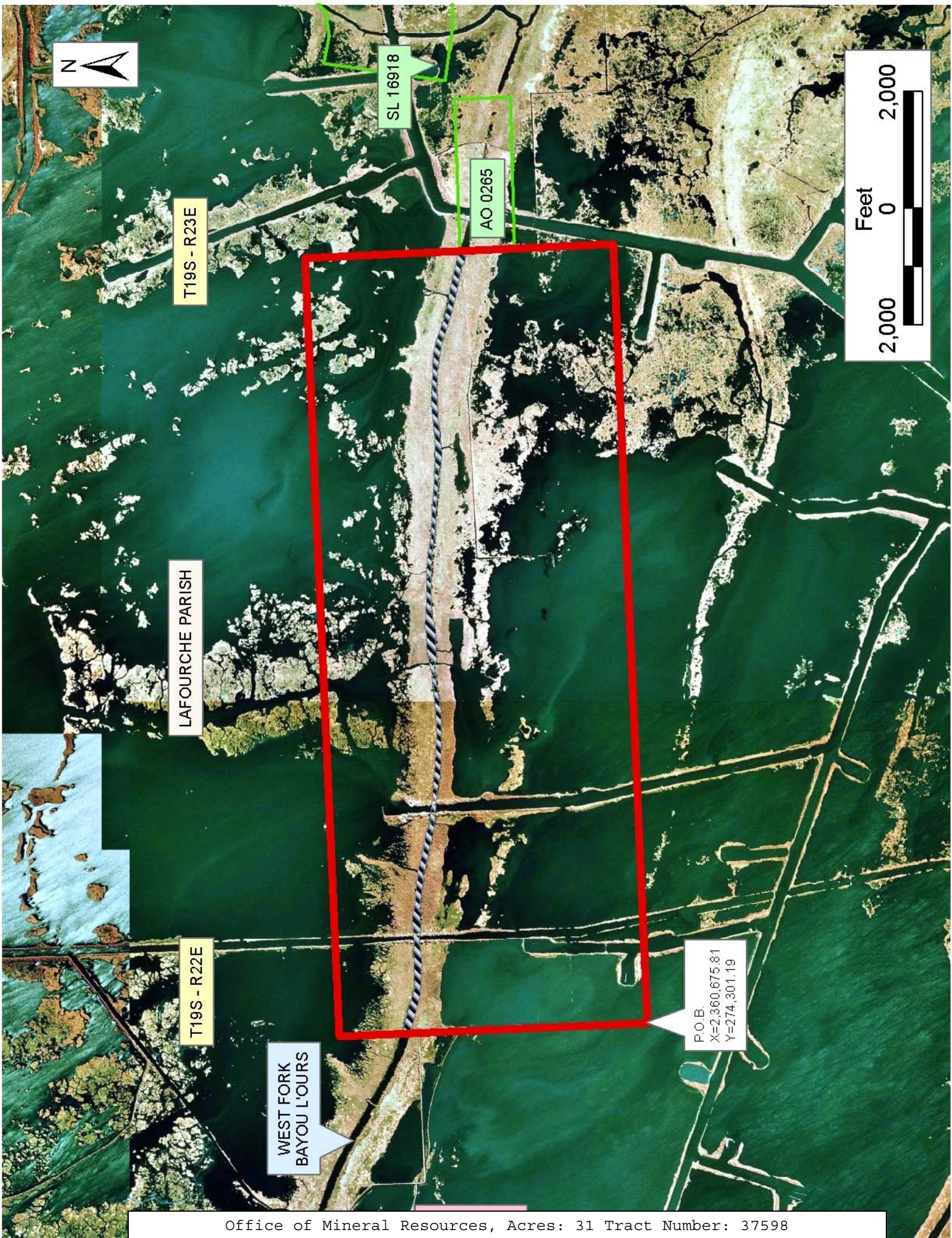
NOTE: The above description of the Tract nominated for lease has been provided and corrected, where required, exclusively by the nomination party. Any mineral lease selected from this Tract and awarded by the Louisiana State Mineral Board shall be without warranty of any kind, either express, implied, or statutory, including, but not limited to, the implied warranties of merchantability and fitness for a particular purpose. Should the mineral lease awarded by the Louisiana State Mineral Board be subsequently modified, cancelled or abrogated due to the existence of conflicting leases, operating agreements, private claims or other future obligations or conditions which may affect all or any portion of the leased Tract, it shall not relieve the Lessee of the obligation to pay any bonus due thereon to the Louisiana State Mineral Board, nor shall the Louisiana State Mineral Board be obligated to refund any consideration paid by the Lessor prior to such modification, cancellation, or abrogation, including, but not limited to, bonuses, rentals and royalties.

NOTE: The State of Louisiana does hereby reserve, and this lease shall be subject to, the imprescriptible right of surface use in the nature of a servitude in favor of the Department of Natural Resources, including its Offices and Commissions, for the sole purpose of implementing, constructing, servicing and maintaining approved coastal zone management and/or restoration projects. Utilization of any and all rights derived under this lease by the mineral lessee, its agents, successors or assigns, shall not interfere with nor hinder the reasonable surface use by the Department of Natural Resources, its Offices or Commissions, as herein above reserved.

NOTE: The Department of Wildlife and Fisheries has designated certain areas in the coastal waters of the State of Louisiana as Oyster Seed Bed Areas. The exact location of those Seed Bed Areas must be obtained from the Department of Wildlife and Fisheries and any work done under a mineral lease from the State of Louisiana may necessarily be conducted in conformity with the rules and regulations promulgated by the said Department of Wildlife and Fisheries for Oyster Seed Bed Areas.

Applicant: DOYLE LAND SERVICES, INC.

Bidder	Cash Payment	Price/Acre	Rental	Oil	Gas	Other



T19S - R23E

LAFOURCHE PARISH

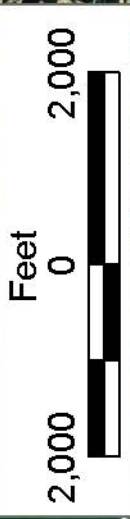
T19S - R22E

WEST FORK
BAYOU L'OURS

SL 16918

AO 0265

P.O.B.
X=2,360,675.81
Y=274,301.19



TRACT 37599 - Plaquemines Parish, Louisiana

All of the lands now or formerly constituting the beds and bottoms of all water bodies of every nature and description the title of which vests in the State of Louisiana, together with all islands arising therein and other lands formed by accretion or by reliction, where allowed by law, excepting tax adjudicated lands, and not presently under mineral lease on July 13, 2005, situated in Plaquemines Parish, Louisiana, and more particularly described as follows: Beginning at a point having Coordinates of X = 2,449,800.00 and Y = 272,400.00; thence East 14,646.00 feet to a point on the West line of State Lease No. 18148 having Coordinates of X = 2,464,446.00 and Y = 272,400.00; thence South 4,197.67 feet along the West line of said State Lease No. 18148 to its Southwest corner, said corner also being the Northwest corner of State Lease No. 18149, having Coordinates of X = 2,464,446.00 and Y = 268,202.33; thence South 3,116.90 feet along the West line of said State Lease No. 18149 to its Southwest corner having Coordinates of X = 2,464,446.00 and Y = 265,085.43; thence West 14,646.00 feet to a point having Coordinates of X = 2,449,800.00 and Y = 265,085.43; thence North 7,314.57 feet to the point of beginning, containing approximately **2459.35 acres**, all as more particularly outlined on a plat on file in the Office of Mineral Resources, Department of Natural Resources. All bearings, distances and coordinates are based on Louisiana Coordinate System of 1927, (North or South Zone), where applicable.

NOTE: The above description of the Tract nominated for lease has been provided and corrected, where required, exclusively by the nomination party. Any mineral lease selected from this Tract and awarded by the Louisiana State Mineral Board shall be without warranty of any kind, either express, implied, or statutory, including, but not limited to, the implied warranties of merchantability and fitness for a particular purpose. Should the mineral lease awarded by the Louisiana State Mineral Board be subsequently modified, cancelled or abrogated due to the existence of conflicting leases, operating agreements, private claims or other future obligations or conditions which may affect all or any portion of the leased Tract, it shall not relieve the Lessee of the obligation to pay any bonus due thereon to the Louisiana State Mineral Board, nor shall the Louisiana State Mineral Board be obligated to refund any consideration paid by the Lessor prior to such modification, cancellation, or abrogation, including, but not limited to, bonuses, rentals and royalties.

NOTE: The State of Louisiana does hereby reserve, and this lease shall be subject to, the imprescriptible right of surface use in the nature of a servitude in favor of the Department of Natural Resources, including its Offices and Commissions, for the sole purpose of implementing, constructing, servicing and maintaining approved coastal zone management and/or restoration projects. Utilization of any and all rights derived under this lease by the mineral lessee, its agents, successors or assigns, shall not interfere with nor hinder the reasonable surface use by the

Department of Natural Resources, its Offices or Commissions, as herein above reserved.

NOTE: The Department of Wildlife and Fisheries has designated certain areas in the coastal waters of the State of Louisiana as Oyster Seed Bed Areas. The exact location of those Seed Bed Areas must be obtained from the Department of Wildlife and Fisheries and any work done under a mineral lease from the State of Louisiana may necessarily be conducted in conformity with the rules and regulations promulgated by the said Department of Wildlife and Fisheries for Oyster Seed Bed Areas.

Applicant: ONEPRES RESOURCES

Bidder	Cash Payment	Price/Acre	Rental	Oil	Gas	Other



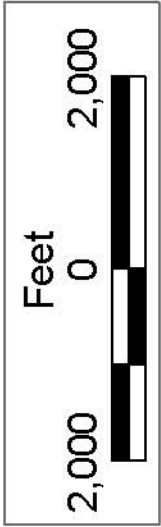
SL 18148

SL 18149

PLAQUEMINES PARISH

BARATARIA BAY

P.O.B.
X=2449,800.00
Y=272,400.00



TRACT 37600 - Jefferson and Plaquemines Parishes, Louisiana

All of the lands now or formerly constituting the beds and bottoms of all water bodies of every nature and description the title of which vests in the State of Louisiana, together with all islands arising therein and other lands formed by accretion or by reliction, where allowed by law, excepting tax adjudicated lands, and not presently under mineral lease on July 13, 2005, situated in Jefferson and Plaquemines Parishes, Louisiana, and more particularly described as follows: Beginning at a point having Coordinates of X = 2,449,800.00 and Y = 272,400.00; thence South 7,314.57 feet to a point having Coordinates of X = 2,449,800.00 and Y = 265,085.43; thence West 14,667.98 feet to a point having Coordinates of X = 2,435,132.02 and Y = 265,085.43; thence North 3,484.57 feet to the Southeast corner of State Lease No. 15744, having Coordinates of X = 2,435,132.02 and Y = 268,570.00; thence North 3,234.63 feet along the East line of said State Lease No. 15744 to its Northeast corner, said corner also being the Southeast corner of State Lease No. 15631, having Coordinates of X = 2,435,132.02 and Y = 271,804.63; thence North 595.37 feet along the East line of said State Lease No. 15631 to a point having Coordinates of X = 2,435,132.02 and Y = 272,400.00; thence East 14,667.98 feet to the point of beginning, containing **2,463.04 acres**, all as more particularly outlined on a plat on file in the Office of Mineral Resources, Department of Natural Resources. All bearings, distances and coordinates are based on Louisiana Coordinate System of 1927, (North or South Zone), where applicable.

NOTE: The above description of the Tract nominated for lease has been provided and corrected, where required, exclusively by the nomination party. Any mineral lease selected from this Tract and awarded by the Louisiana State Mineral Board shall be without warranty of any kind, either express, implied, or statutory, including, but not limited to, the implied warranties of merchantability and fitness for a particular purpose. Should the mineral lease awarded by the Louisiana State Mineral Board be subsequently modified, cancelled or abrogated due to the existence of conflicting leases, operating agreements, private claims or other future obligations or conditions which may affect all or any portion of the leased Tract, it shall not relieve the Lessee of the obligation to pay any bonus due thereon to the Louisiana State Mineral Board, nor shall the Louisiana State Mineral Board be obligated to refund any consideration paid by the Lessor prior to such modification, cancellation, or abrogation, including, but not limited to, bonuses, rentals and royalties.

NOTE: The State of Louisiana does hereby reserve, and this lease shall be subject to, the imprescriptible right of surface use in the nature of a servitude in favor of the Department of Natural Resources, including its Offices and Commissions, for the sole purpose of implementing, constructing, servicing and maintaining approved coastal zone management and/or restoration projects. Utilization of any and all rights derived under this lease by the mineral lessee, its agents, successors or assigns, shall not interfere with nor hinder the reasonable surface use by the

Department of Natural Resources, its Offices or Commissions, as herein above reserved.

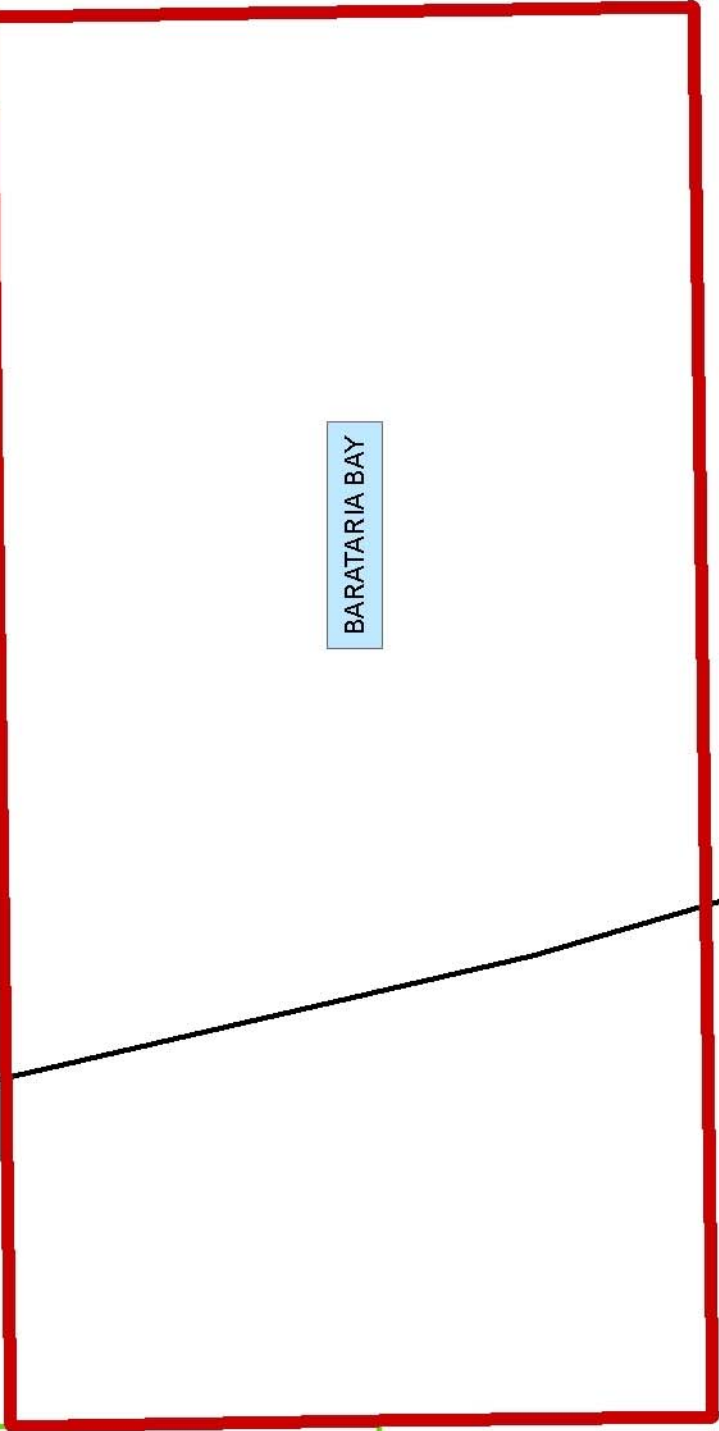
NOTE: The Department of Wildlife and Fisheries has designated certain areas in the coastal waters of the State of Louisiana as Oyster Seed Bed Areas. The exact location of those Seed Bed Areas must be obtained from the Department of Wildlife and Fisheries and any work done under a mineral lease from the State of Louisiana may necessarily be conducted in conformity with the rules and regulations promulgated by the said Department of Wildlife and Fisheries for Oyster Seed Bed Areas.

Applicant: ONEPRES RESOURCES

Bidder	Cash Payment	Price/Acre	Rental	Oil	Gas	Other



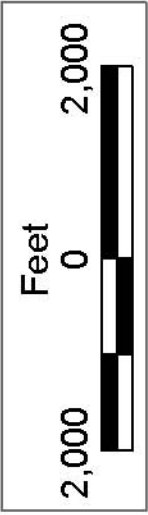
P.O.B.
X=2,449,800.00
Y=272,400.00



BARATARIA BAY

PLAQUEMINES PARISH

JEFFERSON PARISH



SL 3035

SL 14374

SL 14534

SL 15631

SL 15744