

**TRACT 37581 - Portion of Block 33, Breton Sound Area, and Block 26, Main Pass Area, Revised, Plaquemines Parish, Louisiana**

All of the lands now or formerly constituting the beds and bottoms of all water bodies of every nature and description the title of which vests in the State of Louisiana, together with all islands arising therein and other lands formed by accretion or by reliction, where allowed by law, excepting tax adjudicated lands, and not presently under mineral lease on July 13, 2005, situated in Plaquemines Parish, Louisiana, and more particularly described as follows: Beginning at a point having Coordinates of X = 2,635,350.00 and Y = 307,580.00, said point being the southeast corner of Block 26, Main Pass Area, Revised, said point also being the southwest corner of Block 33, Breton Sound Area; Thence West 7,375.00 feet on and along the south line of said Block 26, Main Pass Area, Revised, to a point having Coordinates of X = 2,627,975.00 and Y = 307,580.00; Thence North 7,375.00 feet to a point having Coordinates of X = 2,627,975.00 and Y = 314,955.00; Thence East 7,375.00 feet to a point having Coordinates of X = 2,635,350.00 and Y = 314,955.00, said point being on the east line of said Block 26, Main Pass Area, Revised, said line also being the west line of said Block 33, Breton Sound Area; Thence East 7,375.00 feet to a point having Coordinates of X = 2,642,725.00 and Y = 314,955.00; Thence South 7,375.00 feet to a point having Coordinates of X = 2,642,725.00 and Y = 307,580.00, said point being on the south line of said Block 33, Breton Sound Area; Thence West 7,375.00 feet on and along said south line of said Block 33, Breton Sound Area, to the point of beginning, containing approximately **2,497.27 acres**, all as more particularly outlined on a plat on file in the Office of Mineral Resources, Department of Natural Resources. All bearings, distances and coordinates are based on Louisiana Coordinate System of 1927, (North or South Zone), where applicable.

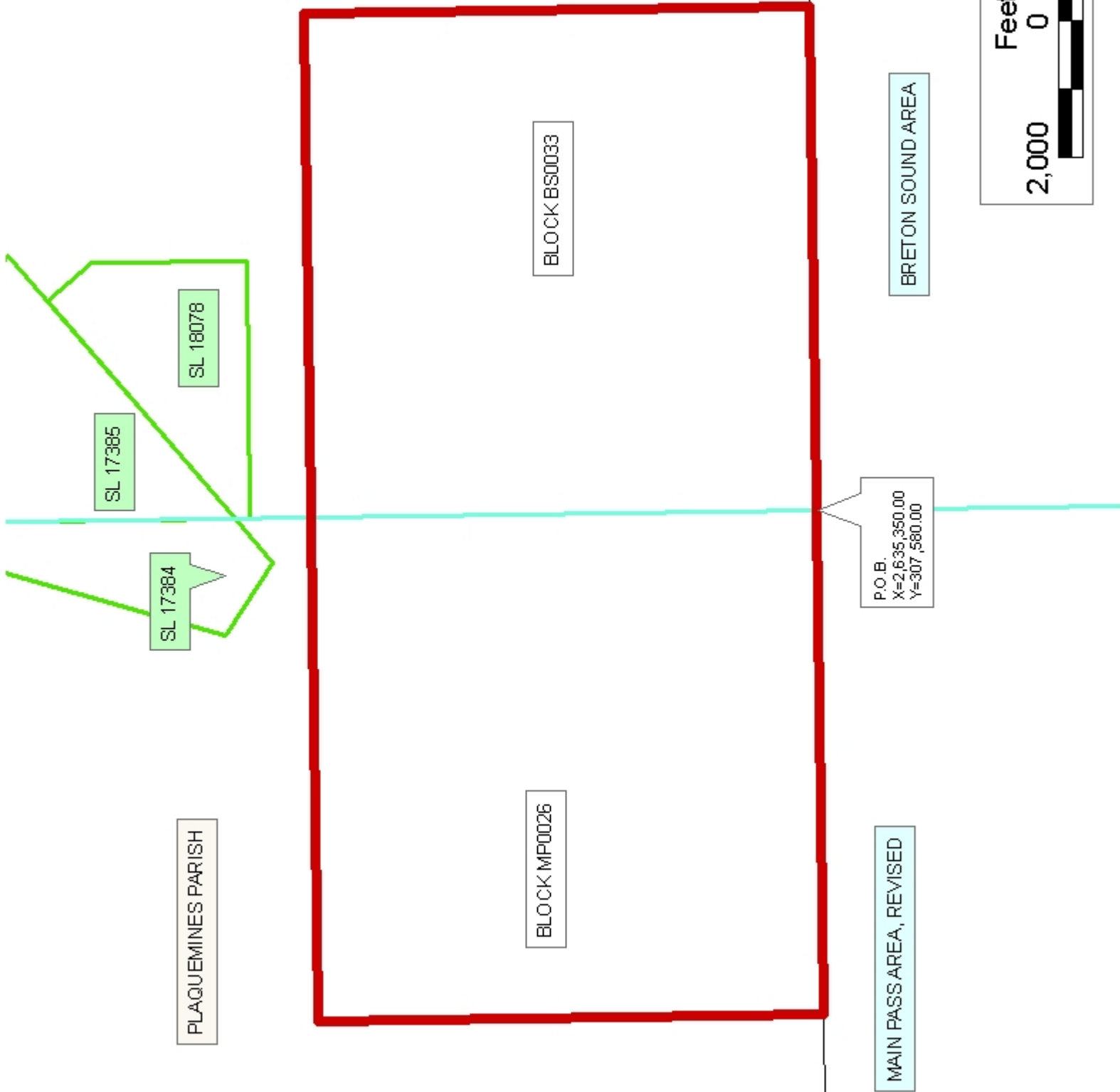
NOTE: The above description of the Tract nominated for lease has been provided and corrected, where required, exclusively by the nomination party. Any mineral lease selected from this Tract and awarded by the Louisiana State Mineral Board shall be without warranty of any kind, either express, implied, or statutory, including, but not limited to, the implied warranties of merchantability and fitness for a particular purpose. Should the mineral lease awarded by the Louisiana State Mineral Board be subsequently modified, cancelled or abrogated due to the existence of conflicting leases, operating agreements, private claims or other future obligations or conditions which may affect all or any portion of the leased Tract, it shall not relieve the Lessee of the obligation to pay any bonus due thereon to the Louisiana State Mineral Board, nor shall the Louisiana State Mineral Board be obligated to refund any consideration paid by the Lessor prior to such modification, cancellation, or abrogation, including, but not limited to, bonuses, rentals and royalties.

NOTE: The State of Louisiana does hereby reserve, and this lease shall be subject to, the imprescriptible right of surface use in the nature of a servitude in favor of the Department of Natural Resources, including its Offices and Commissions, for the sole purpose of implementing,

constructing, servicing and maintaining approved coastal zone management and/or restoration projects. Utilization of any and all rights derived under this lease by the mineral lessee, its agents, successors or assigns, shall not interfere with nor hinder the reasonable surface use by the Department of Natural Resources, its Offices or Commissions, as herein above reserved.

Applicant: ROBERT A. SCHROEDER, INC.

Bidder	Cash Payment	Price/Acre	Rental	Oil	Gas	Other



PLAQUEMINES PARISH

BLOCK MP0026

BLOCK BS0033

MAIN PASS AREA, REVISED

BRETON SOUND AREA

P.O.B.  
X=2,635,350.00  
Y=307,580.00

SL 17385

SL 17384

SL 18078



**TRACT 37582 - Portion of Blocks 32, and 33, Main Pass Area, Revised, Plaquemines Parish, Louisiana**

All of the lands now or formerly constituting the beds and bottoms of all water bodies of every nature and description the title of which vests in the State of Louisiana, together with all islands arising therein and other lands formed by accretion or by reliction, where allowed by law, excepting tax adjudicated lands, and not presently under mineral lease on July 13, 2005, situated in Plaquemines Parish, Louisiana, and more particularly described as follows: Beginning at a point within Block 33, Main Pass Area, Revised having Coordinates of X = 2,600,721.00 and Y = 300,868.00; thence East 7,414.45 feet to a point being on the West boundary line of State Lease No. 18473 having Coordinates of X = 2,608,135.45 and Y = 300,868.00; thence along the West boundary line of said State Lease No. 18473 South 03 degrees 43 minutes 03 seconds East 3,154.63 feet to a point being the Southwest corner of said State Lease No. 18473 having Coordinates of X = 2,608,340.00 and Y = 297,720.00; thence South 03 degrees 43 minutes 03 seconds East approximately 440 feet to a point being on the North boundary line of State Lease No. 1958, as amended; thence along the North boundary line of said State Lease No. 1958 Westerly approximately 2,518 feet to a point being the Northwest corner of said State Lease No. 1958; thence Westerly approximately 5,129 feet to a point having Coordinates of X = 2,600,721.00 and Y = 297,280.00; thence North 3,588.00 feet to the point of beginning, **LESS AND EXCEPT** any portion of State Lease No. 1958, as amended, which may lie within the above described tract, containing approximately **620 acres**, all as more particularly outlined on a plat on file in the Office of Mineral Resources, Department of Natural Resources. All bearings, distances and coordinates are based on Louisiana Coordinate System of 1927, (North or South Zone), where applicable.

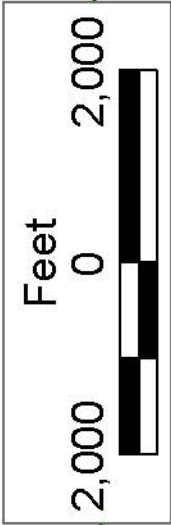
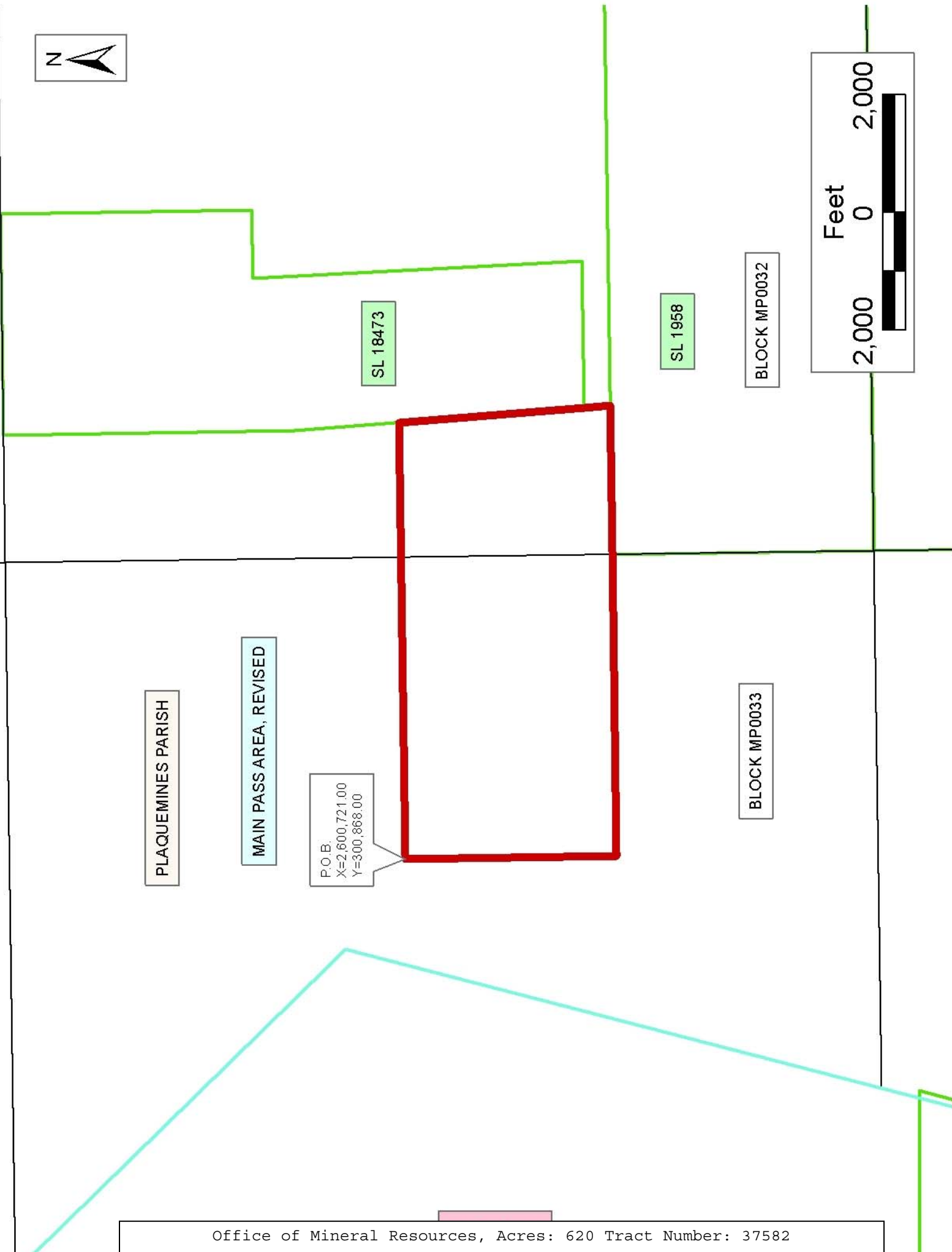
NOTE: The above description of the Tract nominated for lease has been provided and corrected, where required, exclusively by the nomination party. Any mineral lease selected from this Tract and awarded by the Louisiana State Mineral Board shall be without warranty of any kind, either express, implied, or statutory, including, but not limited to, the implied warranties of merchantability and fitness for a particular purpose. Should the mineral lease awarded by the Louisiana State Mineral Board be subsequently modified, cancelled or abrogated due to the existence of conflicting leases, operating agreements, private claims or other future obligations or conditions which may affect all or any portion of the leased Tract, it shall not relieve the Lessee of the obligation to pay any bonus due thereon to the Louisiana State Mineral Board, nor shall the Louisiana State Mineral Board be obligated to refund any consideration paid by the Lessor prior to such modification, cancellation, or abrogation, including, but not limited to, bonuses, rentals and royalties.

NOTE: The State of Louisiana does hereby reserve, and this lease shall be subject to, the imprescriptible right of surface use in the nature of a servitude in favor of the Department of Natural Resources, including its

Offices and Commissions, for the sole purpose of implementing, constructing, servicing and maintaining approved coastal zone management and/or restoration projects. Utilization of any and all rights derived under this lease by the mineral lessee, its agents, successors or assigns, shall not interfere with nor hinder the reasonable surface use by the Department of Natural Resources, its Offices or Commissions, as herein above reserved.

Applicant: SUNCOAST LAND SERVICES, INC.

Bidder	Cash Payment	Price/Acre	Rental	Oil	Gas	Other



**TRACT 37583 - Portion of Blocks 33, and 34, Main Pass Area, Revised, Plaquemines Parish, Louisiana**

All of the lands now or formerly constituting the beds and bottoms of all water bodies of every nature and description the title of which vests in the State of Louisiana, together with all islands arising therein and other lands formed by accretion or by reliction, where allowed by law, excepting tax adjudicated lands, and not presently under mineral lease on July 13, 2005, situated in Plaquemines Parish, Louisiana, and more particularly described as follows: Beginning at a point having Coordinates of X = 2,596,621.50 and Y = 297,372.00; thence East 4,100.50 feet to a point having Coordinates of X = 2,600,721.00 and Y = 297,372.00; thence South 5,172.00 feet to a point within Block 35 Main Pass Area, Revised having Coordinates of X = 2,600,721.00 and Y = 292,200.00; thence Westerly approximately 4,046 feet to a point being the Northeast corner of State Lease No. 195, as amended; thence along the North boundary line of said State Lease No. 195 Westerly approximately 53 feet to a point having a coordinate of X = 2,596,621.50; thence Northerly approximately 5,174 feet to the point of beginning, **LESS AND EXCEPT** any portion of State Lease No. 195, as amended, which may lie within the above described tract, containing approximately **487 acres**, all as more particularly outlined on a plat on file in the Office of Mineral Resources, Department of Natural Resources. All bearings, distances and coordinates are based on Louisiana Coordinate System of 1927, (North or South Zone), where applicable.

NOTE: The above description of the Tract nominated for lease has been provided and corrected, where required, exclusively by the nomination party. Any mineral lease selected from this Tract and awarded by the Louisiana State Mineral Board shall be without warranty of any kind, either express, implied, or statutory, including, but not limited to, the implied warranties of merchantability and fitness for a particular purpose. Should the mineral lease awarded by the Louisiana State Mineral Board be subsequently modified, cancelled or abrogated due to the existence of conflicting leases, operating agreements, private claims or other future obligations or conditions which may affect all or any portion of the leased Tract, it shall not relieve the Lessee of the obligation to pay any bonus due thereon to the Louisiana State Mineral Board, nor shall the Louisiana State Mineral Board be obligated to refund any consideration paid by the Lessor prior to such modification, cancellation, or abrogation, including, but not limited to, bonuses, rentals and royalties.

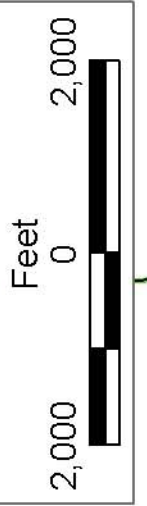
NOTE: The State of Louisiana does hereby reserve, and this lease shall be subject to, the imprescriptible right of surface use in the nature of a servitude in favor of the Department of Natural Resources, including its Offices and Commissions, for the sole purpose of implementing, constructing, servicing and maintaining approved coastal zone management and/or restoration projects. Utilization of any and all rights derived under this lease by the mineral lessee, its agents, successors or assigns, shall not interfere with nor hinder the reasonable surface use by the

Department of Natural Resources, its Offices or Commissions, as herein above reserved.

Applicant: SUNCOAST LAND SERVICES, INC.

Bidder	Cash Payment	Price/Acre	Rental	Oil	Gas	Other





SL 1958

SL 1961

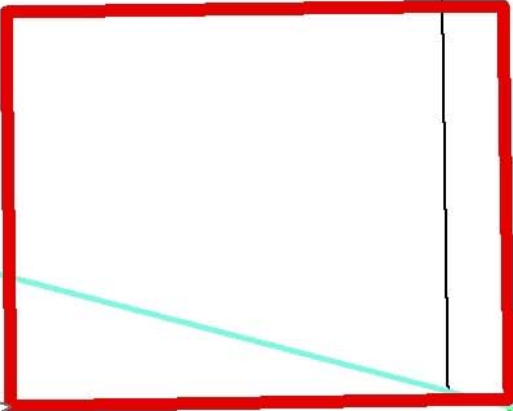
MAIN PASS  
AREA, REVISED

BLOCK MP0033

BLOCK MP0034

PLAQUEMINES PARISH

P.O.B.  
X=2,596,621.50  
Y=297,372.00



SL 195

BRETON SOUND

**TRACT 37584 - Portion of Blocks 33, and 34, Main Pass Area, Revised, Plaquemines Parish, Louisiana**

All of the lands now or formerly constituting the beds and bottoms of all water bodies of every nature and description the title of which vests in the State of Louisiana, together with all islands arising therein and other lands formed by accretion or by reliction, where allowed by law, excepting tax adjudicated lands, and not presently under mineral lease on July 13, 2005, situated in Plaquemines Parish, Louisiana, and more particularly described as follows: Beginning at a point within Block 33, Main Pass Area, Revised having Coordinates of X = 2,600,721.00 and Y = 297,280.00; thence Easterly approximately 5,129 feet to a point being the Northwest corner of State Lease No. 1958, as amended; thence along the West boundary line of said State Lease No. 1958 Southerly approximately 4,450 feet to a point being both the Southwest corner of said State Lease No. 1958 and the Northwest corner of State Lease No. 1961, as amended; thence along the West boundary line of said State Lease No. 1961 Southerly approximately 630 feet to a point having a coordinate of Y = 292,200.00; thence West approximately 5,129 feet to a point having Coordinates of X = 2,600,721.00 and Y = 292,200.00; thence North 5,080.00 feet to the point of beginning, **LESS AND EXCEPT** State Lease No. 1958, as amended, and State Lease No. 1961, as amended, which may lie within the above described tract, containing approximately **598.00 acres**, all as more particularly outlined on a plat on file in the Office of Mineral Resources, Department of Natural Resources. All bearings, distances and coordinates are based on Louisiana Coordinate System of 1927, (North or South Zone), where applicable.

NOTE: The above description of the Tract nominated for lease has been provided and corrected, where required, exclusively by the nomination party. Any mineral lease selected from this Tract and awarded by the Louisiana State Mineral Board shall be without warranty of any kind, either express, implied, or statutory, including, but not limited to, the implied warranties of merchantability and fitness for a particular purpose. Should the mineral lease awarded by the Louisiana State Mineral Board be subsequently modified, cancelled or abrogated due to the existence of conflicting leases, operating agreements, private claims or other future obligations or conditions which may affect all or any portion of the leased Tract, it shall not relieve the Lessee of the obligation to pay any bonus due thereon to the Louisiana State Mineral Board, nor shall the Louisiana State Mineral Board be obligated to refund any consideration paid by the Lessor prior to such modification, cancellation, or abrogation, including, but not limited to, bonuses, rentals and royalties.

NOTE: The State of Louisiana does hereby reserve, and this lease shall be subject to, the imprescriptible right of surface use in the nature of a servitude in favor of the Department of Natural Resources, including its Offices and Commissions, for the sole purpose of implementing, constructing, servicing and maintaining approved coastal zone management and/or restoration projects. Utilization of any and all rights derived

under this lease by the mineral lessee, its agents, successors or assigns, shall not interfere with nor hinder the reasonable surface use by the Department of Natural Resources, its Offices or Commissions, as herein above reserved.

Applicant: SUNCOAST LAND SERVICES, INC.

Bidder	Cash Payment	Price/Acre	Rental	Oil	Gas	Other



PLAQUEMINES PARISH

MAIN PASS AREA, REVISED

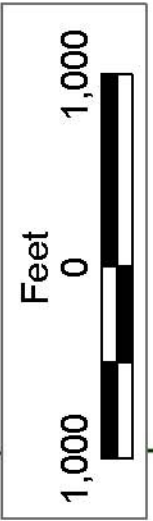
BLOCK MP0033

BLOCK MP0034

SL 1958

SL 1961

P.O.B.  
X=2,600,721.00  
Y=297,280.00



**TRACT 37585 - Plaquemines Parish, Louisiana**

All of the lands now or formerly constituting the beds and bottoms of all water bodies of every nature and description the title of which vests in the State of Louisiana, together with all islands arising therein and other lands formed by accretion or by reliction, where allowed by law, excepting tax adjudicated lands, and not presently under mineral lease on July 13, 2005, situated in Plaquemines Parish, Louisiana, and more particularly described as follows: Beginning at a point having Coordinates of X = 2,586,693.00 and Y = 297,372.00; thence East 5,000.00 feet to a point having Coordinates of X = 2,591,693.00 and Y = 297,372.00; thence South approximately 5,116 feet to a point being on the North boundary line of State Lease No. 195, as amended having a coordinate of X = 2,591,693.00; thence along the North boundary line of said State Lease No. 195 Westerly approximately 5,000 feet to a point having a coordinate of X = 2,586,693.00; thence North approximately 5,057 feet to the point of beginning, **LESS AND EXCEPT** any portion of State Lease No. 195, as amended, which may lie within the above described tract, containing approximately **583 acres**, all as more particularly outlined on a plat on file in the Office of Mineral Resources, Department of Natural Resources. All bearings, distances and coordinates are based on Louisiana Coordinate System of 1927, (North or South Zone), where applicable.

NOTE: The above description of the Tract nominated for lease has been provided and corrected, where required, exclusively by the nomination party. Any mineral lease selected from this Tract and awarded by the Louisiana State Mineral Board shall be without warranty of any kind, either express, implied, or statutory, including, but not limited to, the implied warranties of merchantability and fitness for a particular purpose. Should the mineral lease awarded by the Louisiana State Mineral Board be subsequently modified, cancelled or abrogated due to the existence of conflicting leases, operating agreements, private claims or other future obligations or conditions which may affect all or any portion of the leased Tract, it shall not relieve the Lessee of the obligation to pay any bonus due thereon to the Louisiana State Mineral Board, nor shall the Louisiana State Mineral Board be obligated to refund any consideration paid by the Lessor prior to such modification, cancellation, or abrogation, including, but not limited to, bonuses, rentals and royalties.

NOTE: The State of Louisiana does hereby reserve, and this lease shall be subject to, the imprescriptible right of surface use in the nature of a servitude in favor of the Department of Natural Resources, including its Offices and Commissions, for the sole purpose of implementing, constructing, servicing and maintaining approved coastal zone management and/or restoration projects. Utilization of any and all rights derived under this lease by the mineral lessee, its agents, successors or assigns, shall not interfere with nor hinder the reasonable surface use by the Department of Natural Resources, its Offices or Commissions, as herein above reserved.

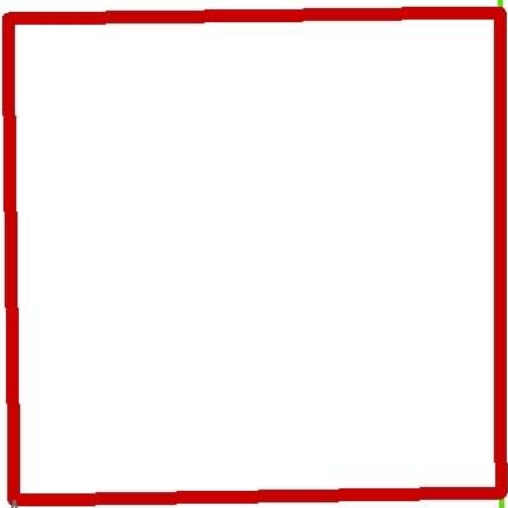
NOTE: The Department of Wildlife and Fisheries has designated certain areas in the coastal waters of the State of Louisiana as Oyster Seed Bed Areas. The exact location of those Seed Bed Areas must be obtained from the Department of Wildlife and Fisheries and any work done under a mineral lease from the State of Louisiana may necessarily be conducted in conformity with the rules and regulations promulgated by the said Department of Wildlife and Fisheries for Oyster Seed Bed Areas.

Applicant: SUNCOAST LAND SERVICES, INC.

Bidder	Cash Payment	Price/Acre	Rental	Oil	Gas	Other

PLAQUEMINES PARISH

P.O.B.  
X=2,586,693.00  
Y=297,372.00



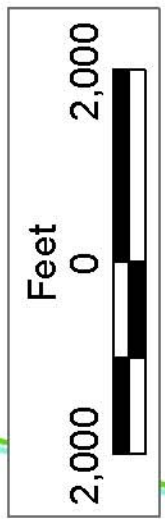
SL 195

BRETON SOUND

BLOCK MP0033

MAIN PASS  
AREA, REVISED

BLOCK MP0034



**TRACT 37586 - Portion of Block 34, Main Pass Area, Revised, Plaquemines Parish, Louisiana**

All of the lands now or formerly constituting the beds and bottoms of all water bodies of every nature and description the title of which vests in the State of Louisiana, together with all islands arising therein and other lands formed by accretion or by reliction, where allowed by law, excepting tax adjudicated lands, and not presently under mineral lease on July 13, 2005, situated in Plaquemines Parish, Louisiana, and more particularly described as follows: Beginning at a point having Coordinates of X = 2,591,693.00 and Y = 297,372.00; thence East 4,928.50 feet to a point having Coordinates of X = 2,596,621.50 and Y = 297,372.00; thence South approximately 5,174 feet to a point being on the North boundary line of State Lease No. 195, as amended having a coordinate of X = 2,596,621.50; thence along the North boundary line of said State Lease No. 195 Westerly approximately 4,928 feet to a point having a coordinate of X = 2,591,693.00; thence North approximately 5,116 feet to the point of beginning, **LESS AND EXCEPT** any portion of State Lease No. 195, as amended, which may lie within the above described tract, containing approximately **582 acres**, all as more particularly outlined on a plat on file in the Office of Mineral Resources, Department of Natural Resources. All bearings, distances and coordinates are based on Louisiana Coordinate System of 1927, (North or South Zone), where applicable.

NOTE: The above description of the Tract nominated for lease has been provided and corrected, where required, exclusively by the nomination party. Any mineral lease selected from this Tract and awarded by the Louisiana State Mineral Board shall be without warranty of any kind, either express, implied, or statutory, including, but not limited to, the implied warranties of merchantability and fitness for a particular purpose. Should the mineral lease awarded by the Louisiana State Mineral Board be subsequently modified, cancelled or abrogated due to the existence of conflicting leases, operating agreements, private claims or other future obligations or conditions which may affect all or any portion of the leased Tract, it shall not relieve the Lessee of the obligation to pay any bonus due thereon to the Louisiana State Mineral Board, nor shall the Louisiana State Mineral Board be obligated to refund any consideration paid by the Lessor prior to such modification, cancellation, or abrogation, including, but not limited to, bonuses, rentals and royalties.

NOTE: The State of Louisiana does hereby reserve, and this lease shall be subject to, the imprescriptible right of surface use in the nature of a servitude in favor of the Department of Natural Resources, including its Offices and Commissions, for the sole purpose of implementing, constructing, servicing and maintaining approved coastal zone management and/or restoration projects. Utilization of any and all rights derived under this lease by the mineral lessee, its agents, successors or assigns, shall not interfere with nor hinder the reasonable surface use by the Department of Natural Resources, its Offices or Commissions, as herein above reserved.



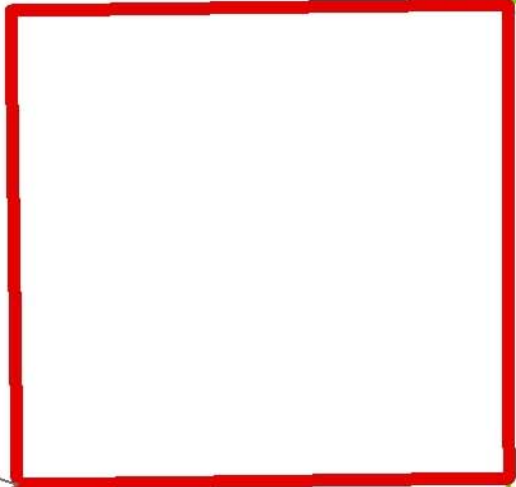
Applicant: SUNCOAST LAND SERVICES, INC.

Bidder	Cash Payment	Price/Acre	Rental	Oil	Gas	Other



PLAQUEMINES PARISH

P.O.B.  
X=2,591,693.00  
Y=297,372.00



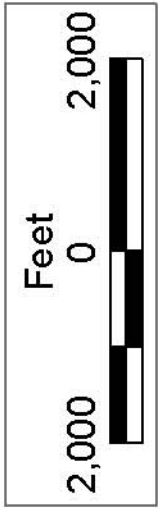
BLOCK MP0033

MAIN PASS  
AREA, REVISED

BLOCK MP0034

BRETON SOUND

SL 195



**TRACT 37587 - Plaquemines Parish, Louisiana**

All of the lands now or formerly constituting the beds and bottoms of all water bodies of every nature and description the title of which vests in the State of Louisiana, together with all islands arising therein and other lands formed by accretion or by reliction, where allowed by law, excepting tax adjudicated lands, and not presently under mineral lease on July 13, 2005, situated in Plaquemines Parish, Louisiana, and more particularly described as follows: Beginning at a point having Coordinates of X = 2,581,693.00 and Y = 297,372.00; thence East 5,000.00 feet to a point having Coordinates of X = 2,586,693.00 and Y = 297,372.00; thence South approximately 5,057 feet to a point being on the North boundary line of State Lease No. 195, as amended having a coordinate of X = 2,586,693.00; thence along the North boundary line of said State Lease No. 195 Westerly approximately 5,000 feet to a point having a coordinate of X = 2,581,693.00; thence North approximately 4,997 feet to the point of beginning, **LESS AND EXCEPT** any portion of State Lease No. 195, as amended, which may lie within the above described tract, containing approximately **577 acres**, all as more particularly outlined on a plat on file in the Office of Mineral Resources, Department of Natural Resources. All bearings, distances and coordinates are based on Louisiana Coordinate System of 1927, (North or South Zone), where applicable.

NOTE: The above description of the Tract nominated for lease has been provided and corrected, where required, exclusively by the nomination party. Any mineral lease selected from this Tract and awarded by the Louisiana State Mineral Board shall be without warranty of any kind, either express, implied, or statutory, including, but not limited to, the implied warranties of merchantability and fitness for a particular purpose. Should the mineral lease awarded by the Louisiana State Mineral Board be subsequently modified, cancelled or abrogated due to the existence of conflicting leases, operating agreements, private claims or other future obligations or conditions which may affect all or any portion of the leased Tract, it shall not relieve the Lessee of the obligation to pay any bonus due thereon to the Louisiana State Mineral Board, nor shall the Louisiana State Mineral Board be obligated to refund any consideration paid by the Lessor prior to such modification, cancellation, or abrogation, including, but not limited to, bonuses, rentals and royalties.

NOTE: The State of Louisiana does hereby reserve, and this lease shall be subject to, the imprescriptible right of surface use in the nature of a servitude in favor of the Department of Natural Resources, including its Offices and Commissions, for the sole purpose of implementing, constructing, servicing and maintaining approved coastal zone management and/or restoration projects. Utilization of any and all rights derived under this lease by the mineral lessee, its agents, successors or assigns, shall not interfere with nor hinder the reasonable surface use by the Department of Natural Resources, its Offices or Commissions, as herein above reserved.

NOTE: The Department of Wildlife and Fisheries has designated certain areas in the coastal waters of the State of Louisiana as Oyster Seed Bed Areas. The exact location of those Seed Bed Areas must be obtained from the Department of Wildlife and Fisheries and any work done under a mineral lease from the State of Louisiana may necessarily be conducted in conformity with the rules and regulations promulgated by the said Department of Wildlife and Fisheries for Oyster Seed Bed Areas.

Applicant: SUNCOAST LAND SERVICES, INC.

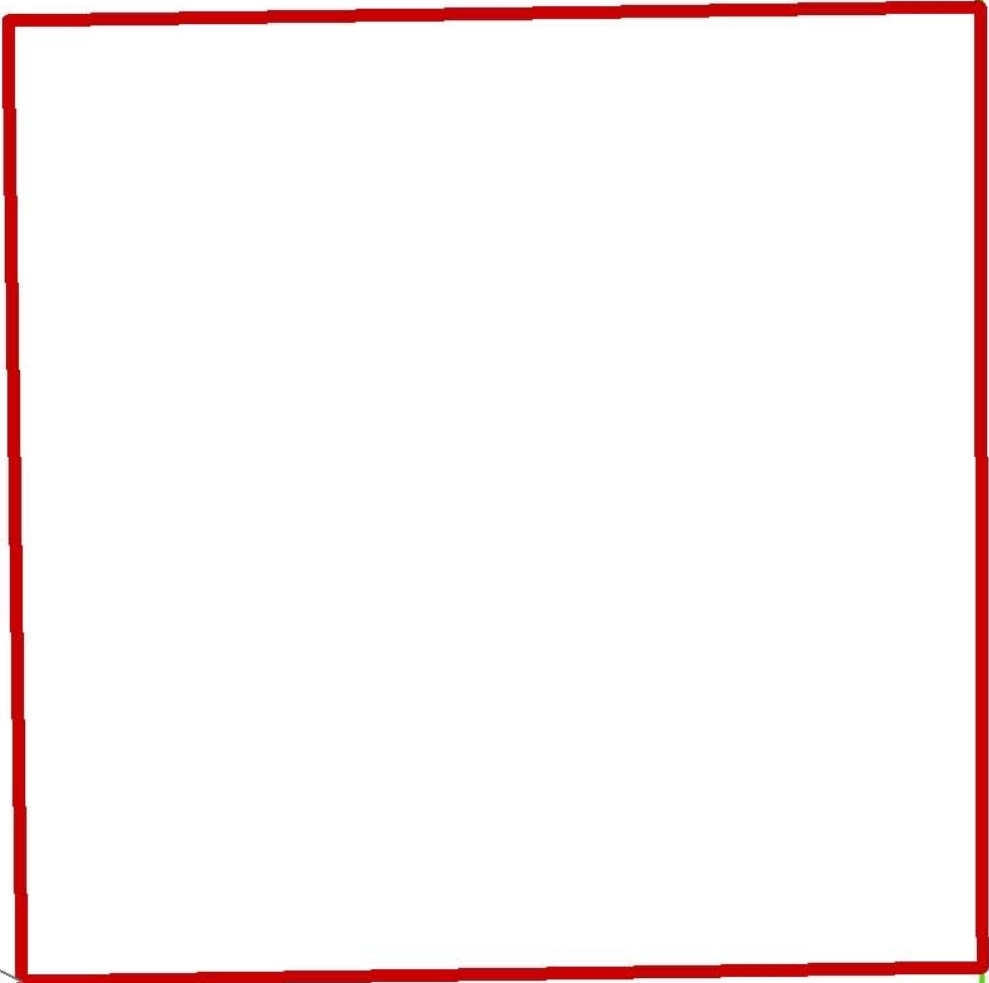
Bidder	Cash Payment	Price/Acre	Rental	Oil	Gas	Other



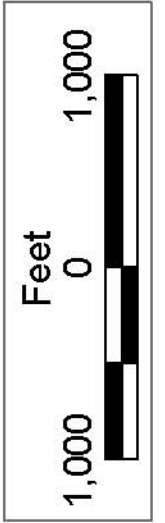
PLAQUEMINES PARISH

BRETON SOUND

P.O.B.  
X=2,581,693.00  
Y=297,372.00



SL 195



**TRACT 37588 - Portion of Block 34, Main Pass Area, Revised, Plaquemines Parish, Louisiana**

All of the lands now or formerly constituting the beds and bottoms of all water bodies of every nature and description the title of which vests in the State of Louisiana, together with all islands arising therein and other lands formed by accretion or by reliction, where allowed by law, excepting tax adjudicated lands, and not presently under mineral lease on July 13, 2005, situated in Plaquemines Parish, Louisiana, and more particularly described as follows: Beginning at a point within Block 34, Main Pass Area, Revised having Coordinates of X = 2,600,721.00 and Y = 292,200.00; thence South 3,370.00 feet to a point having Coordinates of X = 2,600,721.00 and Y = 288,830.00; thence West approximately 4,994 feet to a point being on the East boundary line of State Lease No. 195, as amended having a coordinate of Y = 288,830.00; thence along the East boundary line of said State Lease No. 195 Northerly approximately 3,498 feet to a point being the Northeast corner of said State Lease No. 195 having a coordinate of Y = 292,200.00; thence East approximately 4,046 feet to the point of beginning, **LESS AND EXCEPT** any portion of State Lease No. 195, as amended which may lie within the above described tract, containing approximately **349 acres**, all as more particularly outlined on a plat on file in the Office of Mineral Resources, Department of Natural Resources. All bearings, distances and coordinates are based on Louisiana Coordinate System of 1927, (North or South Zone), where applicable.

NOTE: The above description of the Tract nominated for lease has been provided and corrected, where required, exclusively by the nomination party. Any mineral lease selected from this Tract and awarded by the Louisiana State Mineral Board shall be without warranty of any kind, either express, implied, or statutory, including, but not limited to, the implied warranties of merchantability and fitness for a particular purpose. Should the mineral lease awarded by the Louisiana State Mineral Board be subsequently modified, cancelled or abrogated due to the existence of conflicting leases, operating agreements, private claims or other future obligations or conditions which may affect all or any portion of the leased Tract, it shall not relieve the Lessee of the obligation to pay any bonus due thereon to the Louisiana State Mineral Board, nor shall the Louisiana State Mineral Board be obligated to refund any consideration paid by the Lessor prior to such modification, cancellation, or abrogation, including, but not limited to, bonuses, rentals and royalties.

NOTE: The State of Louisiana does hereby reserve, and this lease shall be subject to, the imprescriptible right of surface use in the nature of a servitude in favor of the Department of Natural Resources, including its Offices and Commissions, for the sole purpose of implementing, constructing, servicing and maintaining approved coastal zone management and/or restoration projects. Utilization of any and all rights derived under this lease by the mineral lessee, its agents, successors or assigns, shall not interfere with nor hinder the reasonable surface use by the

Department of Natural Resources, its Offices or Commissions, as herein above reserved.

Applicant: SUNCOAST LAND SERVICES, INC.

Bidder	Cash Payment	Price/Acre	Rental	Oil	Gas	Other



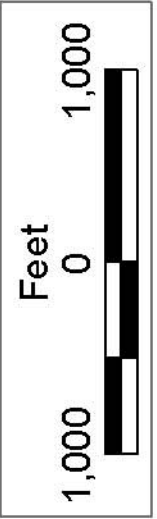
PLAQUEMINES PARISH

BLOCK MP0033

P.O.B.  
X=2,600,721.00  
Y=292,200.00

MAIN PASS  
AREA, REVISED

BLOCK MP0034



SL 195



**TRACT 37589 - Portion of Block 34, Main Pass Area, Revised, Plaquemines Parish, Louisiana**

All of the lands now or formerly constituting the beds and bottoms of all water bodies of every nature and description the title of which vests in the State of Louisiana, together with all islands arising therein and other lands formed by accretion or by reliction, where allowed by law, excepting tax adjudicated lands, and not presently under mineral lease on July 13, 2005, situated in Plaquemines Parish, Louisiana, and more particularly described as follows: Beginning at a point within Block 34, Main Pass Area, Revised having Coordinates of X = 2,600,721.00 and Y = 292,200.00; thence East approximately 5,128 feet to a point being on the West boundary line of State Lease No. 1961, as amended having a coordinate of Y = 292,200.00; thence along the West boundary line of said State Lease No. 1961 Southerly approximately 3,370 feet to a point having a coordinate of Y = 288,830.00; thence West approximately 5,129 feet to a point having Coordinates of X = 2,600,721.00 and Y = 288,830.00; thence North 3,370.00 feet to the point of beginning, **LESS AND EXCEPT** any portion of State Lease No. 1961, as amended which may lie within the above described tract, containing approximately **396 acres**, all as more particularly outlined on a plat on file in the Office of Mineral Resources, Department of Natural Resources. All bearings, distances and coordinates are based on Louisiana Coordinate System of 1927, (North or South Zone), where applicable.

NOTE: The above description of the Tract nominated for lease has been provided and corrected, where required, exclusively by the nomination party. Any mineral lease selected from this Tract and awarded by the Louisiana State Mineral Board shall be without warranty of any kind, either express, implied, or statutory, including, but not limited to, the implied warranties of merchantability and fitness for a particular purpose. Should the mineral lease awarded by the Louisiana State Mineral Board be subsequently modified, cancelled or abrogated due to the existence of conflicting leases, operating agreements, private claims or other future obligations or conditions which may affect all or any portion of the leased Tract, it shall not relieve the Lessee of the obligation to pay any bonus due thereon to the Louisiana State Mineral Board, nor shall the Louisiana State Mineral Board be obligated to refund any consideration paid by the Lessor prior to such modification, cancellation, or abrogation, including, but not limited to, bonuses, rentals and royalties.

NOTE: The State of Louisiana does hereby reserve, and this lease shall be subject to, the imprescriptible right of surface use in the nature of a servitude in favor of the Department of Natural Resources, including its Offices and Commissions, for the sole purpose of implementing, constructing, servicing and maintaining approved coastal zone management and/or restoration projects. Utilization of any and all rights derived under this lease by the mineral lessee, its agents, successors or assigns, shall not interfere with nor hinder the reasonable surface use by the Department of Natural Resources, its Offices or Commissions, as herein above reserved.

Applicant: SUNCOAST LAND SERVICES, INC.

Bidder	Cash Payment	Price/Acre	Rental	Oil	Gas	Other



SL 1958

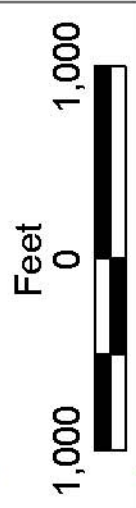
SL 1961

PLAQUEMINES PARISH

BLOCK MP0034

MAIN PASS AREA, REVISED

P.O.B.  
X=2,600,721.00  
Y=292,200.00



**TRACT 37590 - Portion of Block 34, Main Pass Area, Revised, Plaquemines Parish, Louisiana**

All of the lands now or formerly constituting the beds and bottoms of all water bodies of every nature and description the title of which vests in the State of Louisiana, together with all islands arising therein and other lands formed by accretion or by reliction, where allowed by law, excepting tax adjudicated lands, and not presently under mineral lease on July 13, 2005, situated in Plaquemines Parish, Louisiana, and more particularly described as follows: Beginning at a point within Block 34, Main Pass Area, Revised having Coordinates of X = 2,600,721.00 and Y = 288,830.00; thence East approximately 5,129 feet to a point being on the West boundary line of State Lease No. 1961, as amended having a coordinate of Y = 288,830.00; thence along the West boundary line of said State Lease No. 1961 Southerly approximately 3,384 feet to the Southwest corner of said State Lease No. 1961; thence Southerly approximately 615 feet to a point having Coordinates of X = 2,605,850.00 and Y = 284,830.00; thence West 5,129.00 feet to a point having Coordinates of X = 2,600,721.00 and Y = 284,830.00; thence North 4,000.00 feet to the point of beginning, **LESS AND EXCEPT** any portion of State Lease No. 1961, as amended which may lie within the above described tract, containing approximately **470 acres**, all as more particularly outlined on a plat on file in the Office of Mineral Resources, Department of Natural Resources. All bearings, distances and coordinates are based on Louisiana Coordinate System of 1927, (North or South Zone), where applicable.

NOTE: The above description of the Tract nominated for lease has been provided and corrected, where required, exclusively by the nomination party. Any mineral lease selected from this Tract and awarded by the Louisiana State Mineral Board shall be without warranty of any kind, either express, implied, or statutory, including, but not limited to, the implied warranties of merchantability and fitness for a particular purpose. Should the mineral lease awarded by the Louisiana State Mineral Board be subsequently modified, cancelled or abrogated due to the existence of conflicting leases, operating agreements, private claims or other future obligations or conditions which may affect all or any portion of the leased Tract, it shall not relieve the Lessee of the obligation to pay any bonus due thereon to the Louisiana State Mineral Board, nor shall the Louisiana State Mineral Board be obligated to refund any consideration paid by the Lessor prior to such modification, cancellation, or abrogation, including, but not limited to, bonuses, rentals and royalties.

NOTE: The State of Louisiana does hereby reserve, and this lease shall be subject to, the imprescriptible right of surface use in the nature of a servitude in favor of the Department of Natural Resources, including its Offices and Commissions, for the sole purpose of implementing, constructing, servicing and maintaining approved coastal zone management and/or restoration projects. Utilization of any and all rights derived under this lease by the mineral lessee, its agents, successors or assigns, shall not interfere with nor hinder the reasonable surface use by the

Department of Natural Resources, its Offices or Commissions, as herein above reserved.

Applicant: SUNCOAST LAND SERVICES, INC.

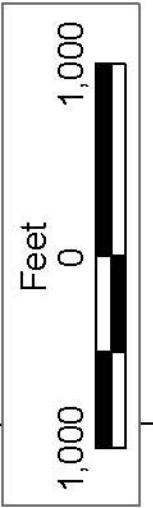
Bidder	Cash Payment	Price/Acre	Rental	Oil	Gas	Other



BLOCK MP0035

SL 1961

BLOCK MP0035



PLAQUEMINES PARISH

BLOCK MP0034

MAIN PASS AREA, REVISED

P.O.B.  
X=2,600,721.00  
Y=288,830.00

SL 15941