

TRACT 37571 - St. Mary and Terrebonne Parishes, Louisiana

All of the lands now or formerly constituting the beds and bottoms of all water bodies of every nature and description the title of which vests in the State of Louisiana, together with all islands arising therein and other lands formed by accretion or by reliction, where allowed by law, excepting tax adjudicated lands, and not presently under mineral lease on July 13, 2005, situated in St. Mary and Terrebonne Parishes, Louisiana, and more particularly described as follows: Beginning at a point having Coordinates of X = 2,054,454.47 and Y = 343,426.54; thence North 89 degrees 18 minutes 35 seconds East 10,514.64 feet to a point having Coordinates of X = 2,064,968.35 and Y = 343,553.23; thence North 89 degrees 04 minutes 11 seconds East 5,283.35 feet to a point having Coordinates of X = 2,070,251.00 and Y = 343,639.00; thence South 00 degrees 57 minutes 17 seconds East 5,221.72 feet to a point having Coordinates of X = 2,070,338.00 and Y = 338,418.00; thence South 88 degrees 58 minutes 54 seconds West 15,803.27 feet to a point having Coordinates of X = 2,054,537.23 and Y = 338,137.13; thence North 00 degrees 53 minutes 47 seconds West 5,290.06 feet to the point of beginning, containing approximately **215 acres**, all as more particularly outlined on a plat on file in the Office of Mineral Resources, Department of Natural Resources. All bearings, distances and coordinates are based on Louisiana Coordinate System of 1927, (North or South Zone), where applicable.

NOTE: The above description of the Tract nominated for lease has been provided and corrected, where required, exclusively by the nomination party. Any mineral lease selected from this Tract and awarded by the Louisiana State Mineral Board shall be without warranty of any kind, either express, implied, or statutory, including, but not limited to, the implied warranties of merchantability and fitness for a particular purpose. Should the mineral lease awarded by the Louisiana State Mineral Board be subsequently modified, cancelled or abrogated due to the existence of conflicting leases, operating agreements, private claims or other future obligations or conditions which may affect all or any portion of the leased Tract, it shall not relieve the Lessee of the obligation to pay any bonus due thereon to the Louisiana State Mineral Board, nor shall the Louisiana State Mineral Board be obligated to refund any consideration paid by the Lessor prior to such modification, cancellation, or abrogation, including, but not limited to, bonuses, rentals and royalties.

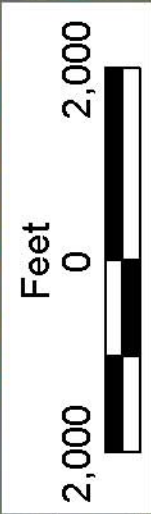
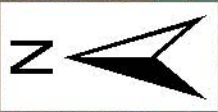
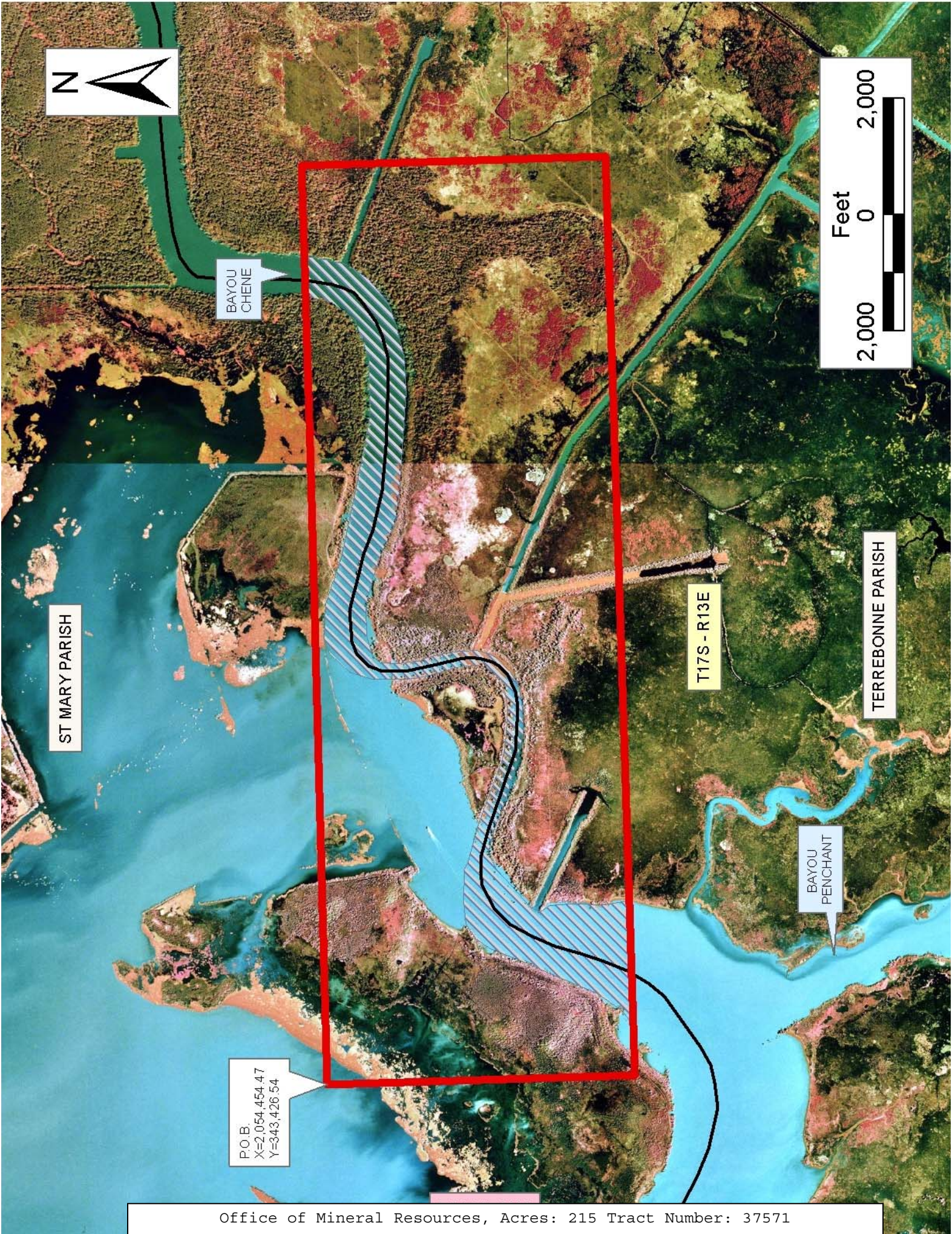
NOTE: A portion of the acreage in the above described tract is described in the Judgement of the 16th Judicial Court District Court, in that matter styled State of Louisiana v. Avoca Incorporated, recorded in C.O.B. 10-E Pg. 593, June 27, 1958 in the records of St Mary Parish, Louisiana.

NOTE: The State of Louisiana does hereby reserve, and this lease shall be subject to, the imprescriptible right of surface use in the nature of a servitude in favor of the Department of Natural Resources, including its Offices and Commissions, for the sole purpose of implementing,

constructing, servicing and maintaining approved coastal zone management and/or restoration projects. Utilization of any and all rights derived under this lease by the mineral lessee, its agents, successors or assigns, shall not interfere with nor hinder the reasonable surface use by the Department of Natural Resources, its Offices or Commissions, as herein above reserved.

Applicant: ACADIAN LAND SERVICES, L.L.C.

Bidder	Cash Payment	Price/ Acre	Rental	Oil	Gas	Other



ST MARY PARISH

BAYOU
CHENE

T17S - R13E

TERREBONNE PARISH

BAYOU
PENCHANT

P.O.B.
X=2,054,454.47
Y=343,426.54

TRACT 37572 - Plaquemines Parish, Louisiana

All of the lands now or formerly constituting the beds and bottoms of all water bodies of every nature and description the title of which vests in the State of Louisiana, together with all islands arising therein and other lands formed by accretion or by reliction, where allowed by law, excepting tax adjudicated lands, and not presently under mineral lease on July 13, 2005, situated in Plaquemines Parish, Louisiana, and more particularly described as follows: Beginning at a point having Coordinates of X = 2,484,166.80 and Y = 335,759.93; thence North 35 degrees 28 minutes 00 second East approximately 1357 feet to a point on the Southern boundary of said State Lease No. 1319, as amended, also said to be the left descending bank of the Mississippi River; thence Southeasterly approximately 147 feet along said Southern boundary of said State Lease No. 1319 to the most North Northwest corner of State Lease No. 11352, as amended; thence along the boundary of said State Lease No. 11352 the following courses: South 29 degrees 18 minutes 49 seconds West approximately 354 feet to a point having Coordinates of X = 2,484,972.15 and Y = 336,599.73, South 77 degrees 09 minutes 22 seconds West 200.00 feet to a point having Coordinates of X = 2,484,777.15 and Y = 336,555.27, Southeasterly 1099.56 feet along an arc to left having a radius of 700.00 feet to a point having Coordinates of X = 2,485,615.25 and Y = 336,028.39 and North 77 degrees 09 minutes 22 seconds East approximately 437 feet to a point on the Southern boundary of said State Lease No. 1319, also said to be the left descending bank of the Mississippi River; thence Southeasterly approximately 339 feet along the said Southern boundary of said State Lease No. 1319 to the most Northerly Northwest corner of State Lease No. 16403, as amended; thence along the boundary of said State Lease No. 16403 the following courses: South 68 degrees 11 minutes 23 seconds West approximately 107 feet to a point having Coordinates of X = 2,486,206.82 and Y = 335,890.78, 600.57 feet along an arc to the left with a radius of 1,200.00 feet and a Chord bearing of South 53 degrees 51 minutes 07 seconds West and a Chord distance of 594.33 feet to a point having Coordinates of X = 2,485,726.91 and Y = 335,540.20, North 86 degrees 57 minutes 59 seconds West 111.88 feet to a point, South 14 degrees 01 minute 40 seconds West 366.09 feet to a point; South 19 degrees 08 minutes 46 seconds West 43.96 feet to a point having Coordinates of X = 2,485,512.02 and Y = 335,149.42, 812.86 feet along an arc to the left with a radius of 3,200.00 feet and a Chord bearing of South 10 degrees 49 minutes 12 seconds West and a Chord distance of 810.68 feet to a point having Coordinates of X = 2,485,359.85 and Y = 334,353.15, 767.70 feet along an arc to the left having a radius of 875.00 feet and a Chord bearing of South 21 degrees 35 minutes 34 seconds East and a Chord distance of 743.32 feet to a point having Coordinates of X = 2,485,633.39 and Y = 333,661.99, 96.22 feet along an arc to the left having a radius of 1,660.00 feet and a Chord bearing of South 48 degrees 23 minutes 18 seconds East and a Chord distance of 96.20 feet to a point having Coordinates of X = 2,485,705.32 and Y = 333,598.11, 196.30 feet along an arc having a radius of 1,150.00 feet and a Chord bearing of South 41 degrees 14 minutes 13 seconds East and a Chord distance of 196.06 feet to

a point having Coordinates of X = 2,485,834.55 and Y = 333,450.68, South 46 degrees 07 minutes 37 seconds East 86.89 feet to a point having Coordinates of X = 2,485,897.19 and Y = 333,390.45, 570.74 feet along an arc to the left having a radius of 800.00 feet and a Chord bearing of South 66 degrees 33 minutes 54 seconds East and a Chord distance of 558.71 feet to a point having Coordinates of X = 2,486,409.82 and Y = 333,168.25, South 87 degrees 00 minutes 11 seconds East 136.00 feet to a point having Coordinates of X = 2,486,545.63 and Y = 333,161.14, 239.96 feet along an arc to the left having a radius of 3,600.00 feet and a Chord bearing of North 52 degrees 50 minutes 26 seconds East and a Chord distance of 239.91 feet to a point having Coordinates of X = 2,486,736.87 and Y = 333,306.14, North 54 degrees 45 minutes 00 second East 1364.56 feet to a point having Coordinates of X = 2,487,851.23 and Y = 334,093.69 and 602.29 feet along an arc having a radius of 1,580.00 feet and a chord bearing of North 43 degrees 49 minutes 40 seconds East and a Chord distance of approximately 598.65 feet to a point on the Southern boundary of said State Lease No. 1319, also said to be the left descending bank of the Mississippi River; thence Southeasterly approximately 1622 feet along the Southern boundary of said State Lease No. 1319 to the point of intersection with the Western boundary and/or a projection thereof of State Lease No. 11930, as amended; thence Southwesterly approximately 2439 feet along the Western boundary and/or a projection thereof of said State Lease No. 11930 to a point on the right descending bank of the Mississippi River; thence Northwesterly approximately 5,635 feet along said descending bank to a point of intersection with a line bearing South 35 degrees 28 minutes 00 second West extended from a point having Coordinates of X = 2,484,166.80 and Y = 335,759.93; thence North 35 degrees 28 minutes 00 second East approximately 1357 feet along said line to said point of beginning, **LESS AND EXCEPT** all those portions of State Lease No. 1319, State Lease No. 11352, State Lease No. 16403 and State Lease No. 11930 which may lie within the above described tract, containing approximately **201 acres**, all as more particularly outlined on a plat on file in the Office of Mineral Resources, Department of Natural Resources. All bearings, distances and coordinates are based on Louisiana Coordinate System of 1927, (North or South Zone), where applicable.

NOTE: The above description of the Tract nominated for lease has been provided and corrected, where required, exclusively by the nomination party. Any mineral lease selected from this Tract and awarded by the Louisiana State Mineral Board shall be without warranty of any kind, either express, implied, or statutory, including, but not limited to, the implied warranties of merchantability and fitness for a particular purpose. Should the mineral lease awarded by the Louisiana State Mineral Board be subsequently modified, cancelled or abrogated due to the existence of conflicting leases, operating agreements, private claims or other future obligations or conditions which may affect all or any portion of the leased Tract, it shall not relieve the Lessee of the obligation to pay any bonus due thereon to the Louisiana State Mineral Board, nor shall the Louisiana State Mineral Board be obligated to refund any consideration

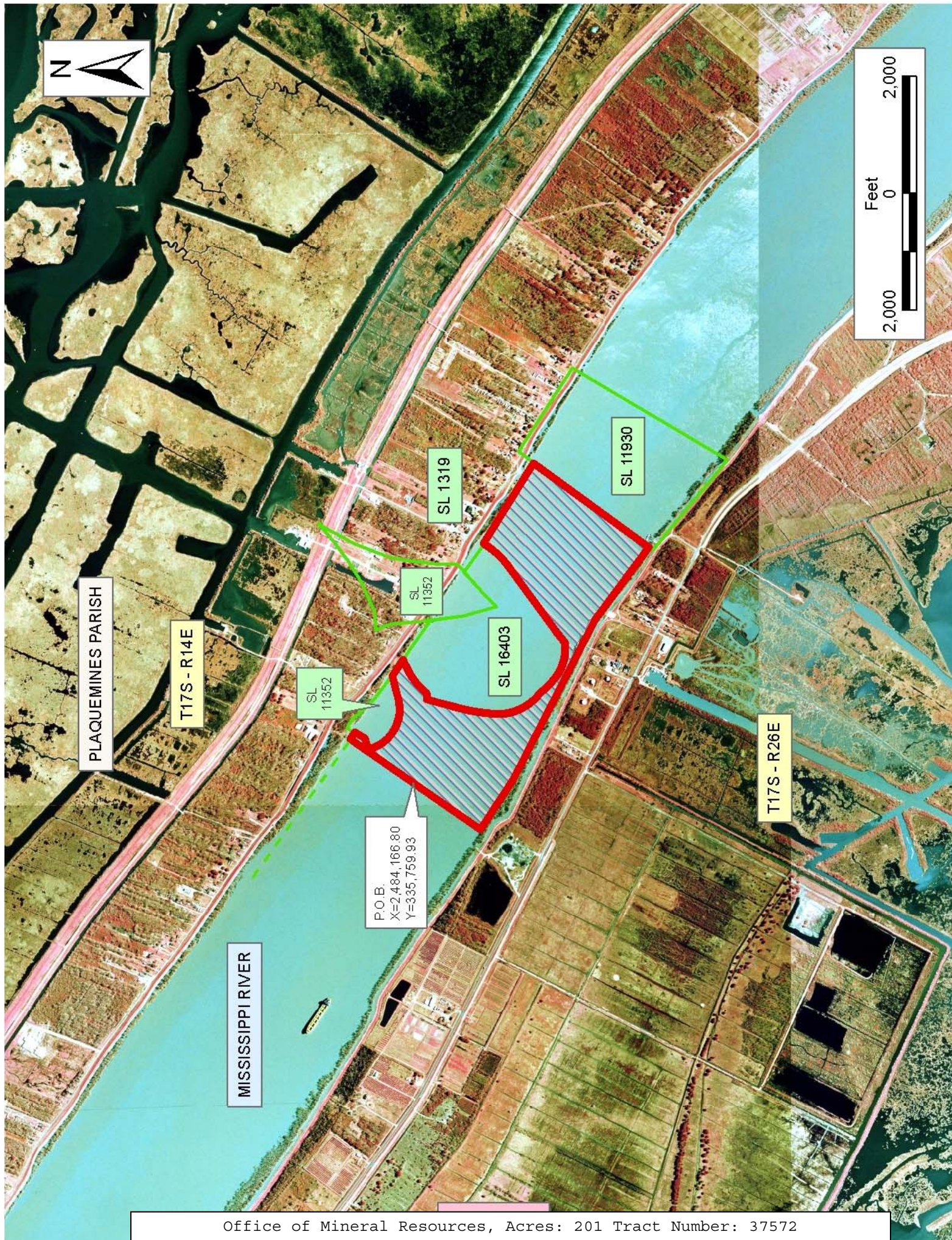
paid by the Lessor prior to such modification, cancellation, or abrogation, including, but not limited to, bonuses, rentals and royalties.

NOTE: The State of Louisiana does hereby reserve, and this lease shall be subject to, the imprescriptible right of surface use in the nature of a servitude in favor of the Department of Natural Resources, including its Offices and Commissions, for the sole purpose of implementing, constructing, servicing and maintaining approved coastal zone management and/or restoration projects. Utilization of any and all rights derived under this lease by the mineral lessee, its agents, successors or assigns, shall not interfere with nor hinder the reasonable surface use by the Department of Natural Resources, its Offices or Commissions, as herein above reserved.

NOTE: The Department of Wildlife and Fisheries has designated certain areas in the coastal waters of the State of Louisiana as Oyster Seed Bed Areas. The exact location of those Seed Bed Areas must be obtained from the Department of Wildlife and Fisheries and any work done under a mineral lease from the State of Louisiana may necessarily be conducted in conformity with the rules and regulations promulgated by the said Department of Wildlife and Fisheries for Oyster Seed Bed Areas.

Applicant: ROBERT D. FAIN

Bidder	Cash Payment	Price/ Acre	Rental	Oil	Gas	Other



TRACT 37573 - Portion of Block 32, Breton Sound Area, Plaquemines Parish, Louisiana

All of the lands now or formerly constituting the beds and bottoms of all water bodies of every nature and description the title of which vests in the State of Louisiana, together with all islands arising therein and other lands formed by accretion or by reliction, where allowed by law, excepting tax adjudicated lands, and not presently under mineral lease on July 13, 2005, situated in Plaquemines Parish, Louisiana, and more particularly described as follows: Beginning at a point having Coordinates of X = 2,650,100.00 and Y = 322,330.00, said point being the Southeast corner of Block 32, Breton Sound Area; Thence West 14,750.00 feet on and along the South line of said Block 32, to a point having Coordinates of X = 2,635,350.00 and Y = 322,330.00, said point being the Southwest corner of said Block 32; Thence North 3,687.50 feet on and along the West line of said Block 32, Breton Sound Area, to a point having Coordinates of X = 2,635,350.00 and Y = 326,017.50; Thence East 14,750.00 feet to a point having Coordinates of X = 2,650,100.00 and Y = 326,017.50, said point being on the East line of said Block 32; Thence South 3,687.50 feet on and along said East line of said Block 32, to the point of beginning **LESS AND EXCEPT** any portion of State Lease No. 1227, as amended, containing approximately **1,248.64 acres**, all as more particularly outlined on a plat on file in the Office of Mineral Resources, Department of Natural Resources. All bearings, distances and coordinates are based on Louisiana Coordinate System of 1927, (North or South Zone), where applicable.

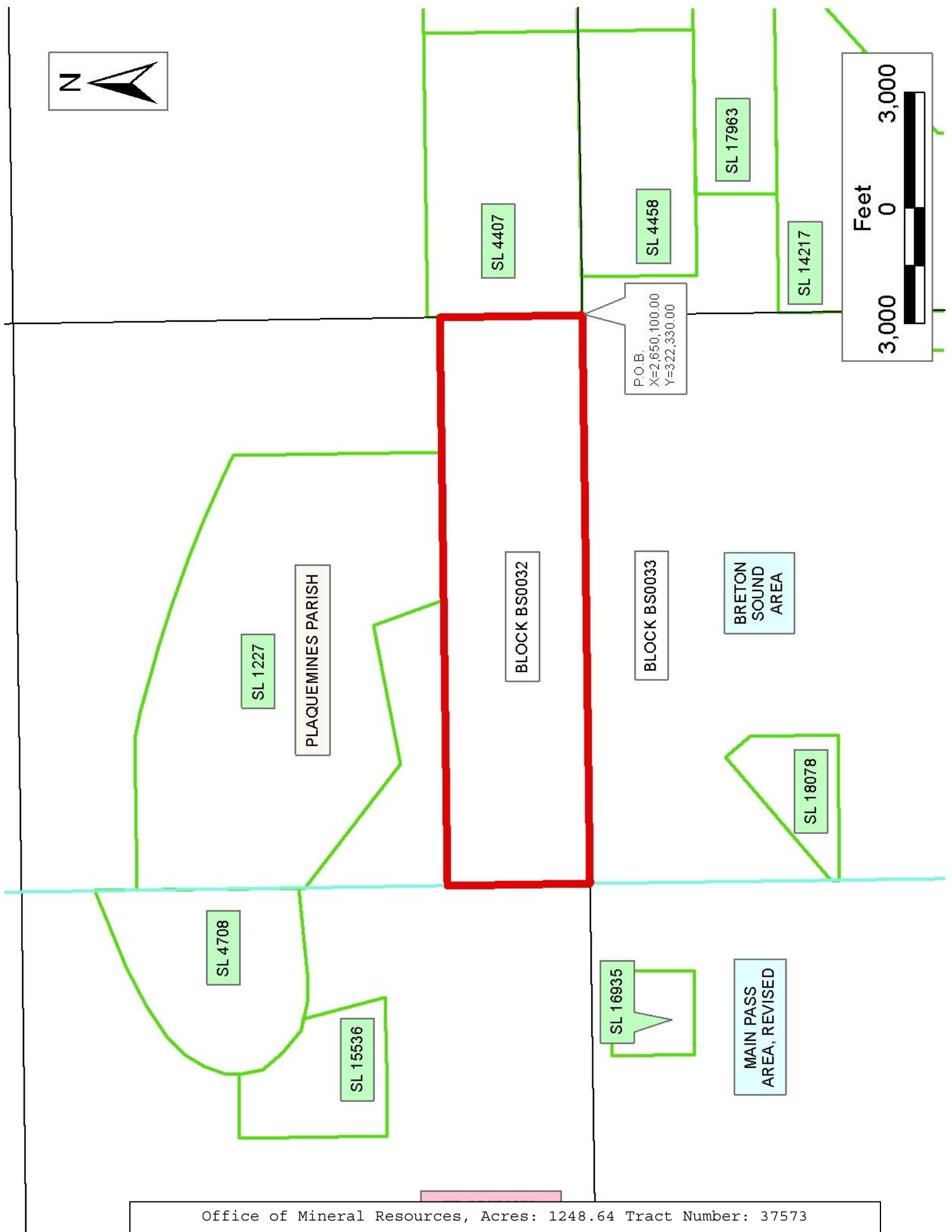
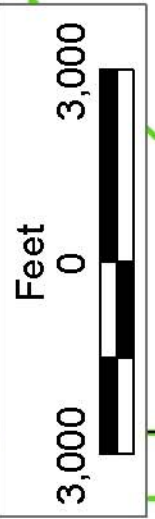
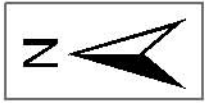
NOTE: The above description of the Tract nominated for lease has been provided and corrected, where required, exclusively by the nomination party. Any mineral lease selected from this Tract and awarded by the Louisiana State Mineral Board shall be without warranty of any kind, either express, implied, or statutory, including, but not limited to, the implied warranties of merchantability and fitness for a particular purpose. Should the mineral lease awarded by the Louisiana State Mineral Board be subsequently modified, cancelled or abrogated due to the existence of conflicting leases, operating agreements, private claims or other future obligations or conditions which may affect all or any portion of the leased Tract, it shall not relieve the Lessee of the obligation to pay any bonus due thereon to the Louisiana State Mineral Board, nor shall the Louisiana State Mineral Board be obligated to refund any consideration paid by the Lessor prior to such modification, cancellation, or abrogation, including, but not limited to, bonuses, rentals and royalties.

NOTE: The State of Louisiana does hereby reserve, and this lease shall be subject to, the imprescriptible right of surface use in the nature of a servitude in favor of the Department of Natural Resources, including its Offices and Commissions, for the sole purpose of implementing, constructing, servicing and maintaining approved coastal zone management and/or restoration projects. Utilization of any and all rights derived under this lease by the mineral lessee, its agents, successors or assigns, shall not interfere with nor hinder the reasonable surface use by the

Department of Natural Resources, its Offices or Commissions, as herein above reserved.

Applicant: ROBERT A. SCHROEDER, INC.

Bidder	Cash Payment	Price/ Acre	Rental	Oil	Gas	Other



TRACT 37574 - Plaquemines Parish, Louisiana

All of the lands now or formerly constituting the beds and bottoms of all water bodies of every nature and description the title of which vests in the State of Louisiana, together with all islands arising therein and other lands formed by accretion or by reliction, where allowed by law, excepting tax adjudicated lands, and not presently under mineral lease on July 13, 2005, situated in Plaquemines Parish, Louisiana, and more particularly described as follows: Beginning at a point having Coordinates of X = 2,492,076.12 and Y = 330,327.99; thence South 33 degrees 09 minutes 00 seconds West approximately 1412 feet to a point on the right descending bank of the Mississippi River; thence Northwesterly approximately 2075 feet along said descending bank to its intersection with the Southeasterly boundary or extension thereof of State Lease No. 11930, as amended; thence Northeasterly approximately 2614 feet along the Southeasterly boundary of State Lease No. 11930, as amended, to the intersection of said boundary or extension thereof with the Southwesterly boundary of State Lease No. 1319, as amended, also said to be the left descending bank of the Mississippi River; thence Southeasterly approximately 2140 feet along said State Lease No. 1319, as amended, to a point of intersection with a line bearing North 33 degrees 09 minutes 00 seconds East extended from a point having Coordinates of X = 2,492,076.12 and Y = 330,327.99; thence South 33 degrees 09 minutes 00 seconds West approximately 1412 feet to the point of beginning, **LESS AND EXCEPT** that portion, if any, of the above described tract which may lie within State Lease No.'s 1319 and 11930, as amended, containing approximately **132 acres**, all as more particularly outlined on a plat on file in the Office of Mineral Resources, Department of Natural Resources. All bearings, distances and coordinates are based on Louisiana Coordinate System of 1927, (North or South Zone), where applicable.

NOTE: The above description of the Tract nominated for lease has been provided and corrected, where required, exclusively by the nomination party. Any mineral lease selected from this Tract and awarded by the Louisiana State Mineral Board shall be without warranty of any kind, either express, implied, or statutory, including, but not limited to, the implied warranties of merchantability and fitness for a particular purpose. Should the mineral lease awarded by the Louisiana State Mineral Board be subsequently modified, cancelled or abrogated due to the existence of conflicting leases, operating agreements, private claims or other future obligations or conditions which may affect all or any portion of the leased Tract, it shall not relieve the Lessee of the obligation to pay any bonus due thereon to the Louisiana State Mineral Board, nor shall the Louisiana State Mineral Board be obligated to refund any consideration paid by the Lessor prior to such modification, cancellation, or abrogation, including, but not limited to, bonuses, rentals and royalties.

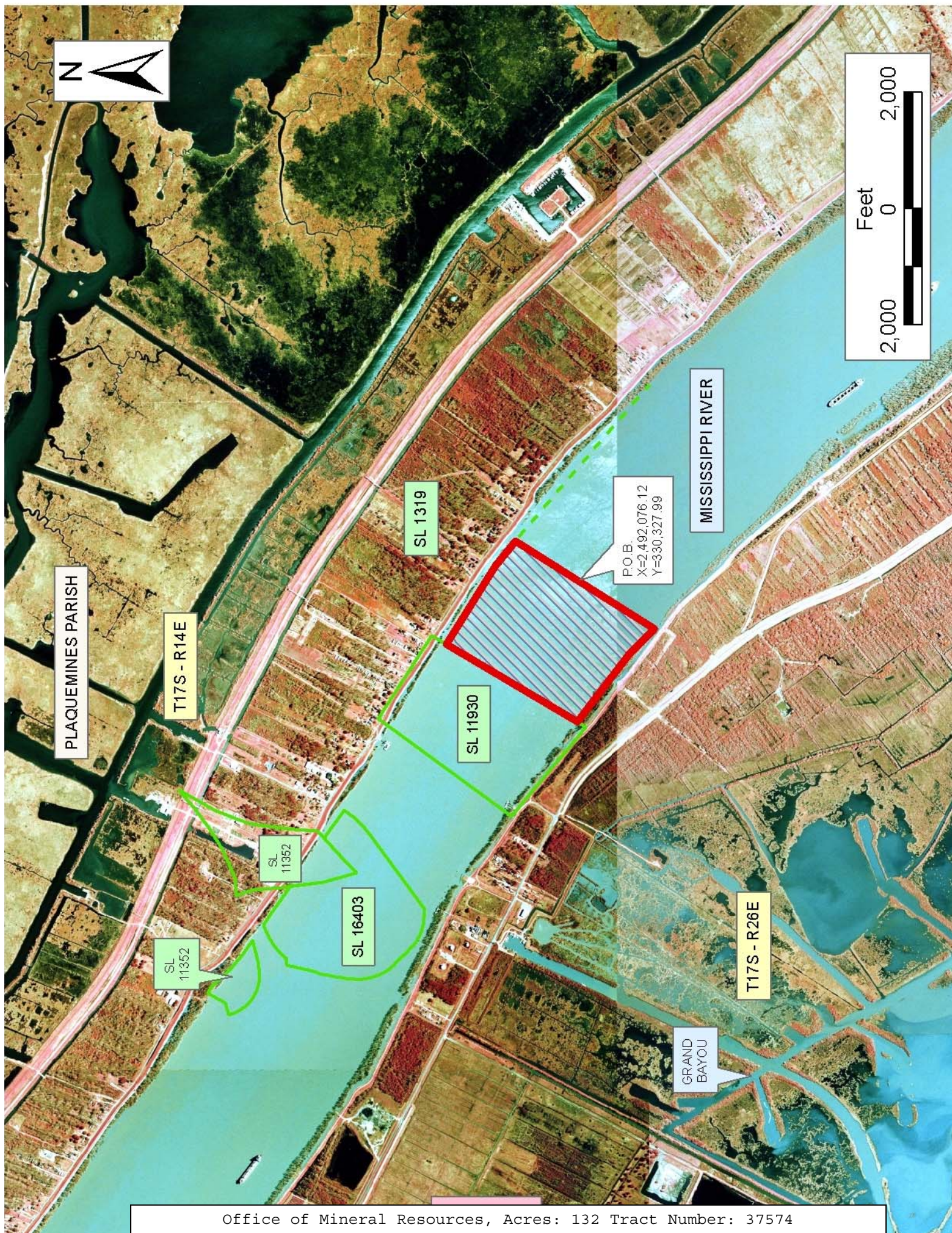
NOTE: The State of Louisiana does hereby reserve, and this lease shall be subject to, the imprescriptible right of surface use in the nature of a servitude in favor of the Department of Natural Resources, including its Offices and Commissions, for the sole purpose of implementing,

constructing, servicing and maintaining approved coastal zone management and/or restoration projects. Utilization of any and all rights derived under this lease by the mineral lessee, its agents, successors or assigns, shall not interfere with nor hinder the reasonable surface use by the Department of Natural Resources, its Offices or Commissions, as herein above reserved.

NOTE: The Department of Wildlife and Fisheries has designated certain areas in the coastal waters of the State of Louisiana as Oyster Seed Bed Areas. The exact location of those Seed Bed Areas must be obtained from the Department of Wildlife and Fisheries and any work done under a mineral lease from the State of Louisiana may necessarily be conducted in conformity with the rules and regulations promulgated by the said Department of Wildlife and Fisheries for Oyster Seed Bed Areas.

Applicant: ROBERT D. FAIN

Bidder	Cash Payment	Price/ Acre	Rental	Oil	Gas	Other



TRACT 37575 - Plaquemines Parish, Louisiana

All of the lands now or formerly constituting the beds and bottoms of all water bodies of every nature and description the title of which vests in the State of Louisiana, together with all islands arising therein and other lands formed by accretion or by reliction, where allowed by law, excepting tax adjudicated lands, and not presently under mineral lease on July 13, 2005, situated in Plaquemines Parish, Louisiana, and more particularly described as follows: Beginning at a point having Coordinates of X = 2,492,076.12 and Y = 330,327.99; thence North 33 degrees 09 minutes 00 seconds East approximately 1412 feet to a point on the Southwesterly boundary of State Lease No. 1319, as amended, also said to be the left descending bank of the Mississippi River; thence Southeasterly approximately 2248 feet along the Southwesterly boundary of State Lease No. 1319, as amended, to a point of intersection with a line bearing North 38 degrees 15 minutes 00 seconds East extended from a point having Coordinates of X = 2,493,634.17 and Y = 328,884.20; thence South 38 degrees 15 minutes 00 seconds West approximately 1479 feet along said line to said point having Coordinates of X = 2,493,634.17 and Y = 328,884.20; thence South 38 degrees 15 minutes 00 seconds West approximately 1479 feet to a point on the right descending bank of said Mississippi River; thence Northwesterly approximately 2007 feet along said right descending bank to a point of intersection with a line bearing South 33 degrees 09 minutes 00 seconds West extended from a point having Coordinates of X = 2,492,076.12 and Y = 330,327.99; thence North 33 degrees 09 minutes 00 seconds East approximately 1412 feet to the point of beginning, **LESS AND EXCEPT** that portion, if any, of the above described tract which may lie within State Lease 1319, as amended, containing approximately **140 acres**, all as more particularly outlined on a plat on file in the Office of Mineral Resources, Department of Natural Resources. All bearings, distances and coordinates are based on Louisiana Coordinate System of 1927, (North or South Zone), where applicable.

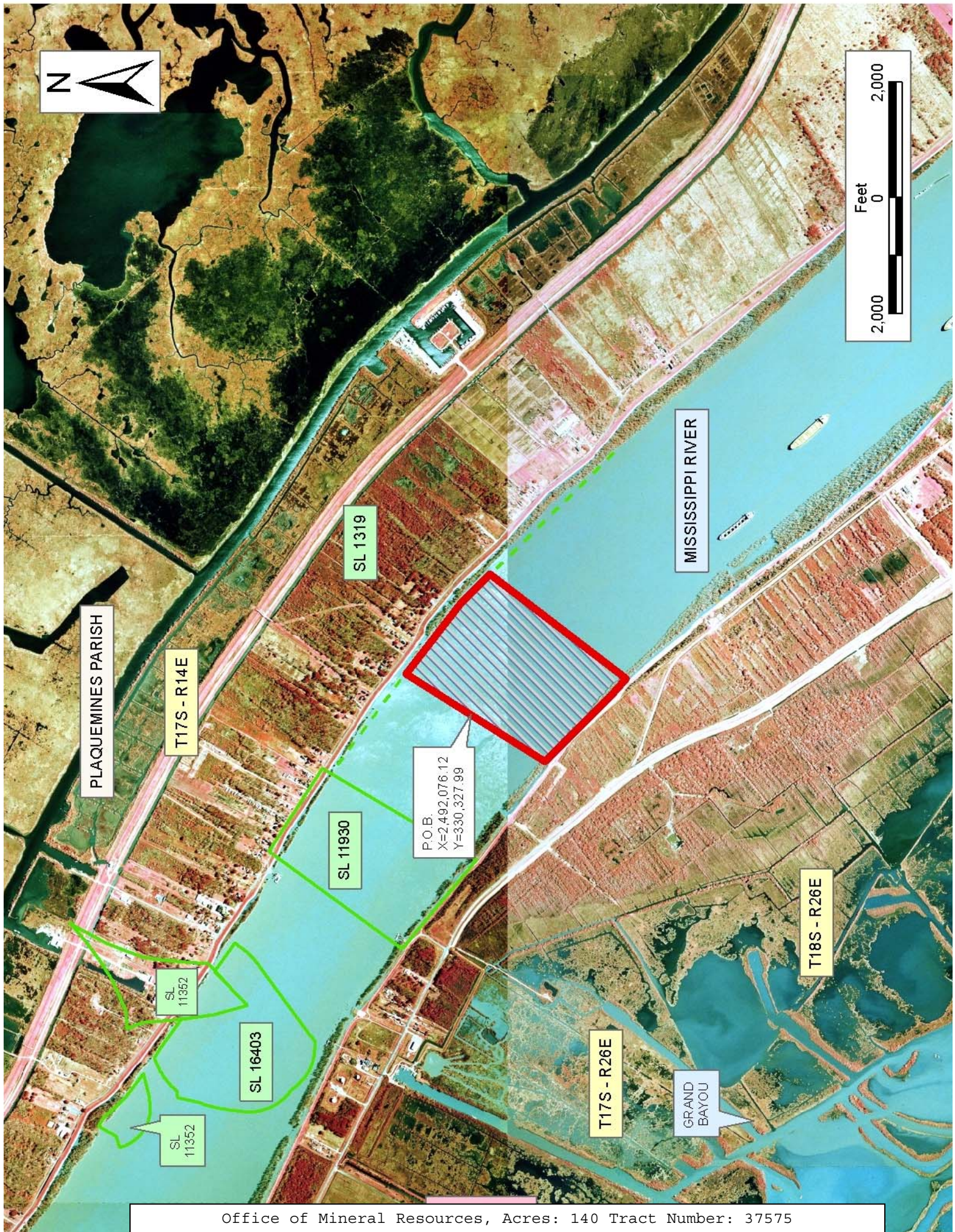
NOTE: The above description of the Tract nominated for lease has been provided and corrected, where required, exclusively by the nomination party. Any mineral lease selected from this Tract and awarded by the Louisiana State Mineral Board shall be without warranty of any kind, either express, implied, or statutory, including, but not limited to, the implied warranties of merchantability and fitness for a particular purpose. Should the mineral lease awarded by the Louisiana State Mineral Board be subsequently modified, cancelled or abrogated due to the existence of conflicting leases, operating agreements, private claims or other future obligations or conditions which may affect all or any portion of the leased Tract, it shall not relieve the Lessee of the obligation to pay any bonus due thereon to the Louisiana State Mineral Board, nor shall the Louisiana State Mineral Board be obligated to refund any consideration paid by the Lessor prior to such modification, cancellation, or abrogation, including, but not limited to, bonuses, rentals and royalties.

NOTE: The State of Louisiana does hereby reserve, and this lease shall be subject to, the imprescriptible right of surface use in the nature of a servitude in favor of the Department of Natural Resources, including its Offices and Commissions, for the sole purpose of implementing, constructing, servicing and maintaining approved coastal zone management and/or restoration projects. Utilization of any and all rights derived under this lease by the mineral lessee, its agents, successors or assigns, shall not interfere with nor hinder the reasonable surface use by the Department of Natural Resources, its Offices or Commissions, as herein above reserved.

NOTE: The Department of Wildlife and Fisheries has designated certain areas in the coastal waters of the State of Louisiana as Oyster Seed Bed Areas. The exact location of those Seed Bed Areas must be obtained from the Department of Wildlife and Fisheries and any work done under a mineral lease from the State of Louisiana may necessarily be conducted in conformity with the rules and regulations promulgated by the said Department of Wildlife and Fisheries for Oyster Seed Bed Areas.

Applicant: ROBERT D. FAIN

Bidder	Cash Payment	Price/ Acre	Rental	Oil	Gas	Other



TRACT 37576 - Plaquemines Parish, Louisiana

All of the lands now or formerly constituting the beds and bottoms of all water bodies of every nature and description the title of which vests in the State of Louisiana, together with all islands arising therein and other lands formed by accretion or by reliction, where allowed by law, excepting tax adjudicated lands, and not presently under mineral lease on July 13, 2005, situated in Plaquemines Parish, Louisiana, and more particularly described as follows: Beginning at a point having Coordinates of X = 2,493,634.17 and Y = 328,884.20; thence North 38 degrees 15 minutes 00 seconds East approximately 1479 feet to a point on the Southwesterly boundary of State Lease No. 1319, as amended, also said to be the left descending bank of the Mississippi River; thence Southeasterly approximately 2658 feet along the Southwesterly boundary of State Lease No. 1319, as amended, to a point of intersection with a line bearing North 47 degrees 28 minutes 00 seconds East extended from a point having Coordinates of X = 2,495,325.35 and Y = 327,152.45; thence South 47 degrees 28 minutes 00 seconds West approximately 1385 feet along said line to said point having Coordinates of X = 2,495,325.35 and Y = 327,152.45; thence South 47 degrees 28 minutes 00 seconds West approximately 1384 feet to a point on the right descending bank of said Mississippi River; thence Northwesterly approximately 2188 feet along said right descending bank to a point of intersection with a line bearing South 38 degrees 15 minutes 00 seconds West extended from a point having Coordinates of X = 2,493,634.17 and Y = 328,884.20; thence North 38 degrees 15 minutes 00 seconds East approximately 1479 feet to the point of beginning, **LESS AND EXCEPT** that portion, if any, of the above described tract which may lie within State Lease No. 1319, as amended, containing approximately **158 acres**, all as more particularly outlined on a plat on file in the Office of Mineral Resources, Department of Natural Resources. All bearings, distances and coordinates are based on Louisiana Coordinate System of 1927, (North or South Zone), where applicable.

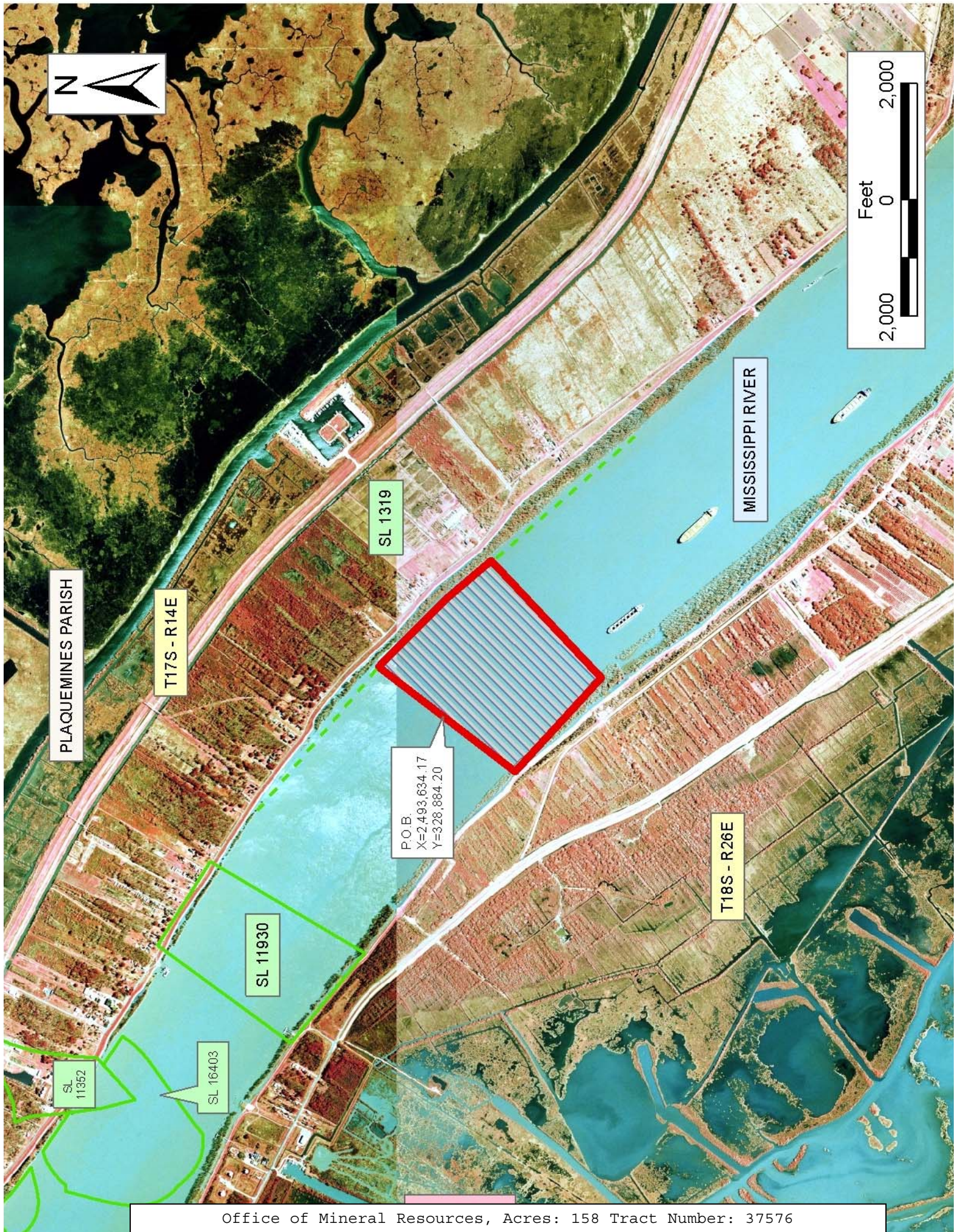
NOTE: The above description of the Tract nominated for lease has been provided and corrected, where required, exclusively by the nomination party. Any mineral lease selected from this Tract and awarded by the Louisiana State Mineral Board shall be without warranty of any kind, either express, implied, or statutory, including, but not limited to, the implied warranties of merchantability and fitness for a particular purpose. Should the mineral lease awarded by the Louisiana State Mineral Board be subsequently modified, cancelled or abrogated due to the existence of conflicting leases, operating agreements, private claims or other future obligations or conditions which may affect all or any portion of the leased Tract, it shall not relieve the Lessee of the obligation to pay any bonus due thereon to the Louisiana State Mineral Board, nor shall the Louisiana State Mineral Board be obligated to refund any consideration paid by the Lessor prior to such modification, cancellation, or abrogation, including, but not limited to, bonuses, rentals and royalties.

NOTE: The State of Louisiana does hereby reserve, and this lease shall be subject to, the imprescriptible right of surface use in the nature of a servitude in favor of the Department of Natural Resources, including its Offices and Commissions, for the sole purpose of implementing, constructing, servicing and maintaining approved coastal zone management and/or restoration projects. Utilization of any and all rights derived under this lease by the mineral lessee, its agents, successors or assigns, shall not interfere with nor hinder the reasonable surface use by the Department of Natural Resources, its Offices or Commissions, as herein above reserved.

NOTE: The Department of Wildlife and Fisheries has designated certain areas in the coastal waters of the State of Louisiana as Oyster Seed Bed Areas. The exact location of those Seed Bed Areas must be obtained from the Department of Wildlife and Fisheries and any work done under a mineral lease from the State of Louisiana may necessarily be conducted in conformity with the rules and regulations promulgated by the said Department of Wildlife and Fisheries for Oyster Seed Bed Areas.

Applicant: ROBERT D. FAIN

Bidder	Cash Payment	Price/ Acre	Rental	Oil	Gas	Other



TRACT 37577 - Lafourche and Terrebonne Parishes, Louisiana

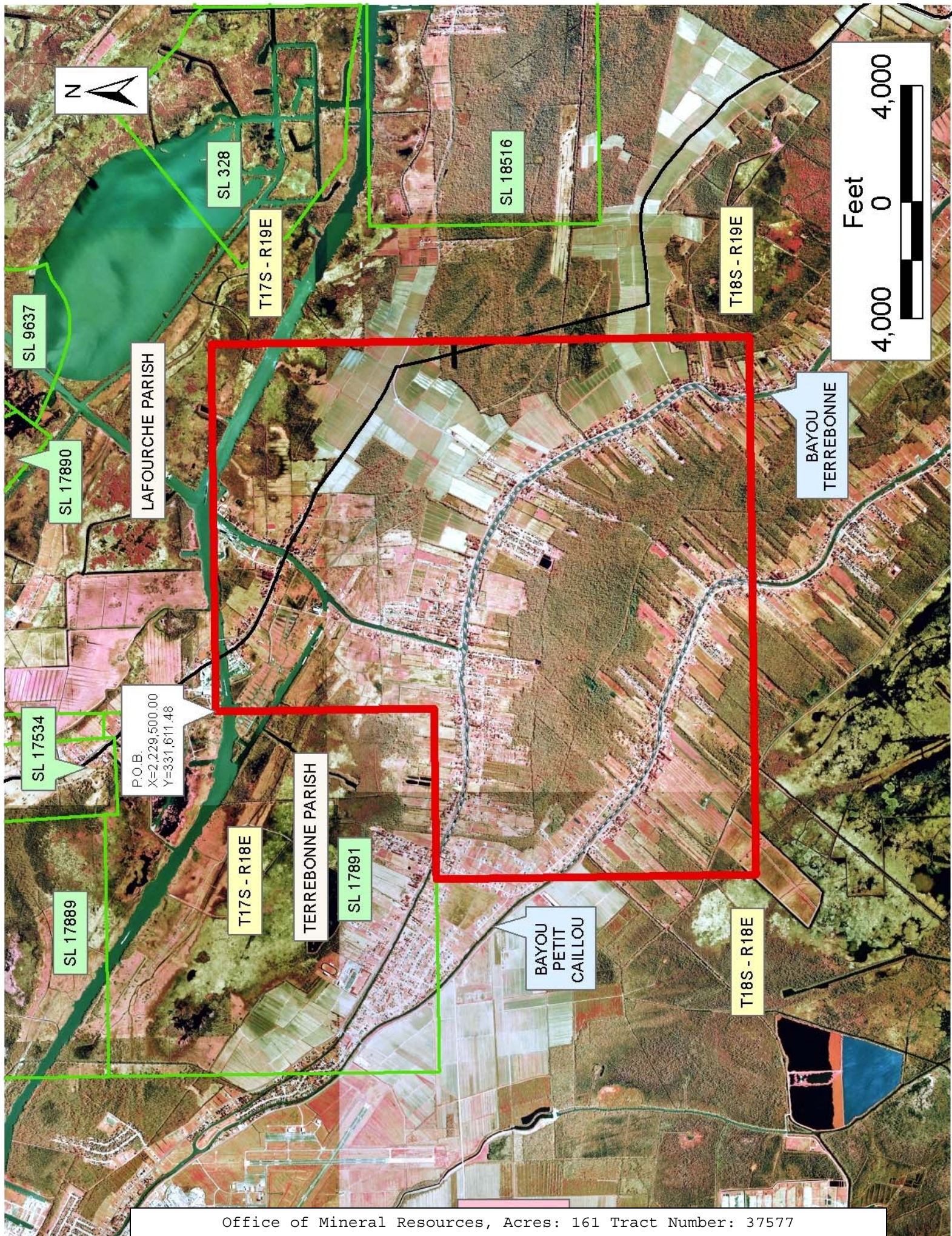
All of the lands now or formerly constituting the beds and bottoms of all water bodies of every nature and description the title of which vests in the State of Louisiana, together with all islands arising therein and other lands formed by accretion or by reliction, where allowed by law, excepting tax adjudicated lands, and not presently under mineral lease on July 13, 2005, situated in Lafourche and Terrebonne Parishes, Louisiana, and more particularly described as follows: Beginning at a point on the East Line of State Lease No. 17891 having Coordinates of X = 2,229,500.00 and Y = 331,611.48; thence East 12,616.62 feet to a point having Coordinates of X = 2,242,116.62 and Y = 331,611.48; thence South 18,480.00 feet to a point having Coordinates of X = 2,242,116.62 and Y = 313,131.48; thence West 18,480.00 feet to a point having Coordinates of X = 2,223,636.62 and Y = 313,131.48; thence North 10,988.52 feet to a point on the South Line of said State Lease No. 17891 having Coordinates of X = 2,223,636.62 and Y = 324,120.00; thence along the boundary of said State Lease the following: East 5,863.38 feet and North 7,491.48 feet to the Point of Beginning, containing approximately **161 acres**, all as more particularly outlined on a plat on file in the Office of Mineral Resources, Department of Natural Resources. All bearings, distances and coordinates are based on Louisiana Coordinate System of 1927, (North or South Zone), where applicable.

NOTE: The above description of the Tract nominated for lease has been provided and corrected, where required, exclusively by the nomination party. Any mineral lease selected from this Tract and awarded by the Louisiana State Mineral Board shall be without warranty of any kind, either express, implied, or statutory, including, but not limited to, the implied warranties of merchantability and fitness for a particular purpose. Should the mineral lease awarded by the Louisiana State Mineral Board be subsequently modified, cancelled or abrogated due to the existence of conflicting leases, operating agreements, private claims or other future obligations or conditions which may affect all or any portion of the leased Tract, it shall not relieve the Lessee of the obligation to pay any bonus due thereon to the Louisiana State Mineral Board, nor shall the Louisiana State Mineral Board be obligated to refund any consideration paid by the Lessor prior to such modification, cancellation, or abrogation, including, but not limited to, bonuses, rentals and royalties.

NOTE: The State of Louisiana does hereby reserve, and this lease shall be subject to, the imprescriptible right of surface use in the nature of a servitude in favor of the Department of Natural Resources, including its Offices and Commissions, for the sole purpose of implementing, constructing, servicing and maintaining approved coastal zone management and/or restoration projects. Utilization of any and all rights derived under this lease by the mineral lessee, its agents, successors or assigns, shall not interfere with nor hinder the reasonable surface use by the Department of Natural Resources, its Offices or Commissions, as herein above reserved.

Applicant: BARKER ENERGY

Bidder	Cash Payment	Price/ Acre	Rental	Oil	Gas	Other



TRACT 37578 - Portion of Block 33, Breton Sound Area, and Block 26, Main Pass Area, Revised, Plaquemines Parish, Louisiana

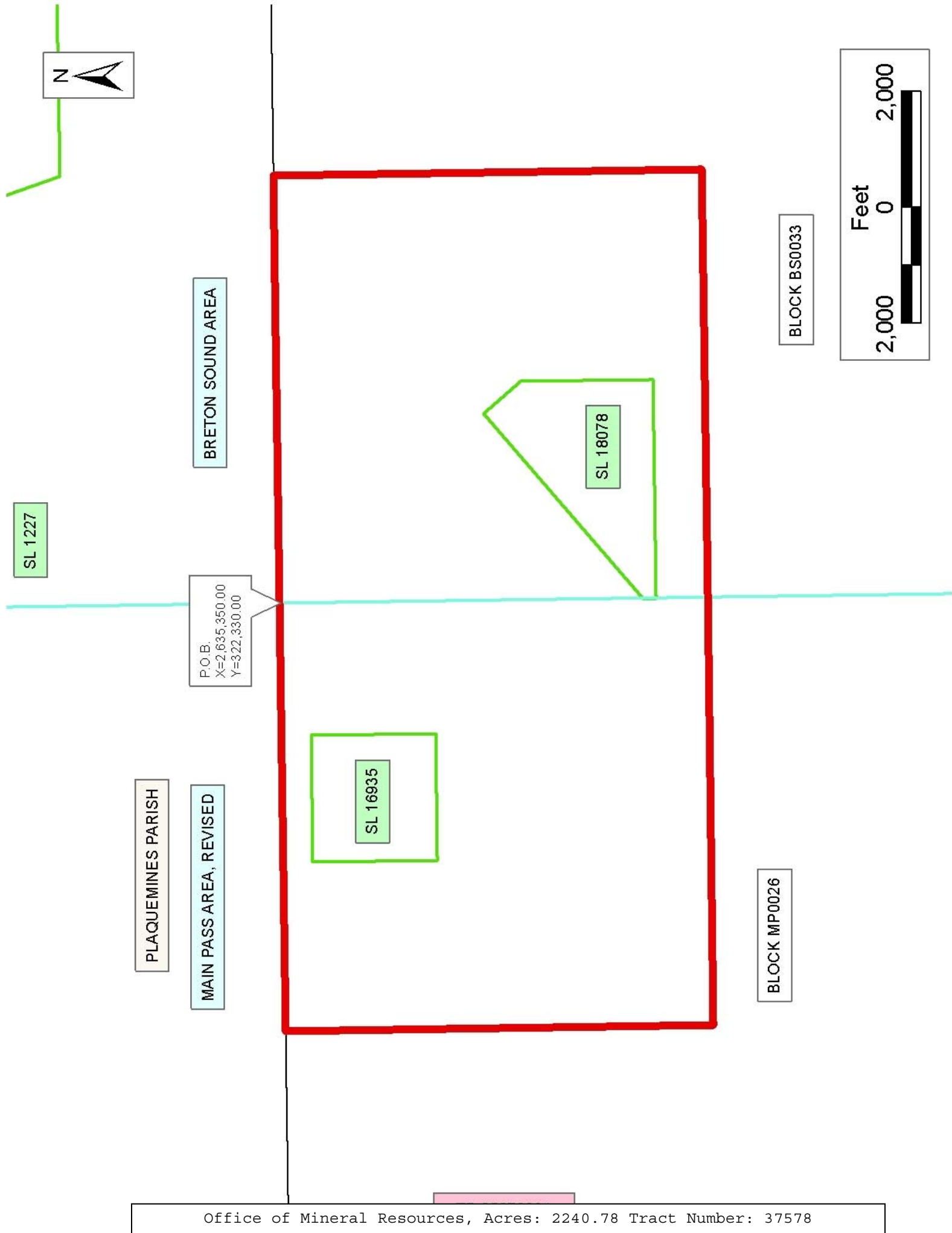
All of the lands now or formerly constituting the beds and bottoms of all water bodies of every nature and description the title of which vests in the State of Louisiana, together with all islands arising therein and other lands formed by accretion or by reliction, where allowed by law, excepting tax adjudicated lands, and not presently under mineral lease on July 13, 2005, situated in Plaquemines Parish, Louisiana, and more particularly described as follows: Beginning at a point having Coordinates of X = 2,635,350.00 and Y = 322,330.00, said point being the Northeast corner of Block 26, Main Pass Area, Revised, said point also being the Northwest corner of Block 33, Breton Sound Area; Thence East 7,375.00 feet along the North line of said Block 33 to a point having Coordinates of X = 2,642,725.00 and Y = 322,330.00; Thence South 7,375.00 feet to a point having Coordinates of X = 2,642,725.00 and Y = 314,955.00; Thence West 7,375.00 feet to a point having Coordinates of X = 2,635,350.00 and Y = 314,955.00, said point being on the West line of said Block 33 and also being the East line of said Block 26; Thence West 7,375.00 feet to a point having Coordinates of X = 2,627,975.00 and Y = 314,955.00; Thence North 7,375.00 feet to a point having Coordinates of X = 2,627,975.00 and Y = 322,330.00, said point being on the North line of said Block 26; Thence East 7,375.00 feet along North line of said 26 to the point of beginning, **LESS AND EXCEPT** that portion of State Lease No. 16935 that lies entirely within the above described tract: Beginning at a point within Block 26, Main Pass Area, Revised having Coordinates of X = 2,633,070.00 and Y = 319,672.00; Thence West 2,187.00 feet to a point having Coordinates of X = 2,630,883.00 and Y = 319,672.00; Thence North 2,148.00 feet to a point having Coordinates of X = 2,630,883.00 and Y = 321,820.00; Thence East 2,187.00 feet to a point having Coordinates of X = 2,633,070.00 and Y = 321,820.00; Thence South 2,148.00 feet to the point of beginning, containing approximately 107.84 acres, **ALSO LESS AND EXCEPT** that portion of State Lease No. 18078 that lies within the above described tract: Beginning at a point having Coordinates of X = 2,635,350.00 and Y = 316,072.86, said point being on the west line of Block 33, Breton Sound Area; Thence North 50 degrees 07 minutes 57 seconds East 4,201.48 feet to a point having Coordinates of X = 2,638,574.76 and Y = 318,766.06; Thence South 39 degrees 52 minutes 03 seconds East 844.35 feet to a point having Coordinates of X = 2,639,116.00 and Y = 318,118.00; Thence South 2,271.00 feet to a point having Coordinates of X = 2,639,116.00 and Y = 315,847.00; Thence West 3,766.00 feet to a point having Coordinates of X = 2,635,350.00 and Y = 315,847.00, said point being on said west line of said Block 33; Thence North 225.86 feet along West line of said Block 33, to the point of beginning, containing 148.65 acres; containing approximately **2,240.78 acres**, all as more particularly outlined on a plat on file in the Office of Mineral Resources, Department of Natural Resources. All bearings, distances and coordinates are based on Louisiana Coordinate System of 1927, (North or South Zone), where applicable.

NOTE: The above description of the Tract nominated for lease has been provided and corrected, where required, exclusively by the nomination party. Any mineral lease selected from this Tract and awarded by the Louisiana State Mineral Board shall be without warranty of any kind, either express, implied, or statutory, including, but not limited to, the implied warranties of merchantability and fitness for a particular purpose. Should the mineral lease awarded by the Louisiana State Mineral Board be subsequently modified, cancelled or abrogated due to the existence of conflicting leases, operating agreements, private claims or other future obligations or conditions which may affect all or any portion of the leased Tract, it shall not relieve the Lessee of the obligation to pay any bonus due thereon to the Louisiana State Mineral Board, nor shall the Louisiana State Mineral Board be obligated to refund any consideration paid by the Lessor prior to such modification, cancellation, or abrogation, including, but not limited to, bonuses, rentals and royalties.

NOTE: The State of Louisiana does hereby reserve, and this lease shall be subject to, the imprescriptible right of surface use in the nature of a servitude in favor of the Department of Natural Resources, including its Offices and Commissions, for the sole purpose of implementing, constructing, servicing and maintaining approved coastal zone management and/or restoration projects. Utilization of any and all rights derived under this lease by the mineral lessee, its agents, successors or assigns, shall not interfere with nor hinder the reasonable surface use by the Department of Natural Resources, its Offices or Commissions, as herein above reserved.

Applicant: ROBERT A. SCHROEDER, INC.

Bidder	Cash Payment	Price/ Acre	Rental	Oil	Gas	Other



TRACT 37579 - Portion of Block 26, Main Pass Area, Revised, Plaquemines Parish, Louisiana

All of the lands now or formerly constituting the beds and bottoms of all water bodies of every nature and description the title of which vests in the State of Louisiana, together with all islands arising therein and other lands formed by accretion or by reliction, where allowed by law, excepting tax adjudicated lands, and not presently under mineral lease on July 13, 2005, situated in Plaquemines Parish, Louisiana, and more particularly described as follows: Beginning at a point having Coordinates of X = 2,620,600.00 and Y = 322,330.00, said point being the Northwest corner of Block 26, Main Pass Area, Revised; Thence East 7,375.00 feet along the North line of said Block 26 to a point having Coordinates of X = 2,627,975.00 and Y = 322,330.00; Thence South 14,750.00 feet to a point having Coordinates of X = 2,627,975.00 and Y = 307,580.00, said point being on the South line of said Block 26; Thence West 5,675.00 feet along the South line of said Block 26, to a point having Coordinates of X = 2,622,300.00 and Y = 307,580.00, said point being the Southeast corner of State Lease No. 17626; Thence along the Eastern and Northern boundaries of said State Lease No. 17626 the following: North 2,395.00 feet to a point having Coordinates of X = 2,622,300.00 and Y = 309,975.00 and North 31 degrees 21 minutes 17 seconds West 3,267.12 feet to its Northwest corner having Coordinates of X = 2,620,600.00 and Y = 312,765.00, said point also located on the West line of said Block 26; Thence North 9,565.00 feet along the West line of said Block 26 to the point of beginning, containing approximately **2,349.36 acres**, all as more particularly outlined on a plat on file in the Office of Mineral Resources, Department of Natural Resources. All bearings, distances and coordinates are based on Louisiana Coordinate System of 1927, (North or South Zone), where applicable.

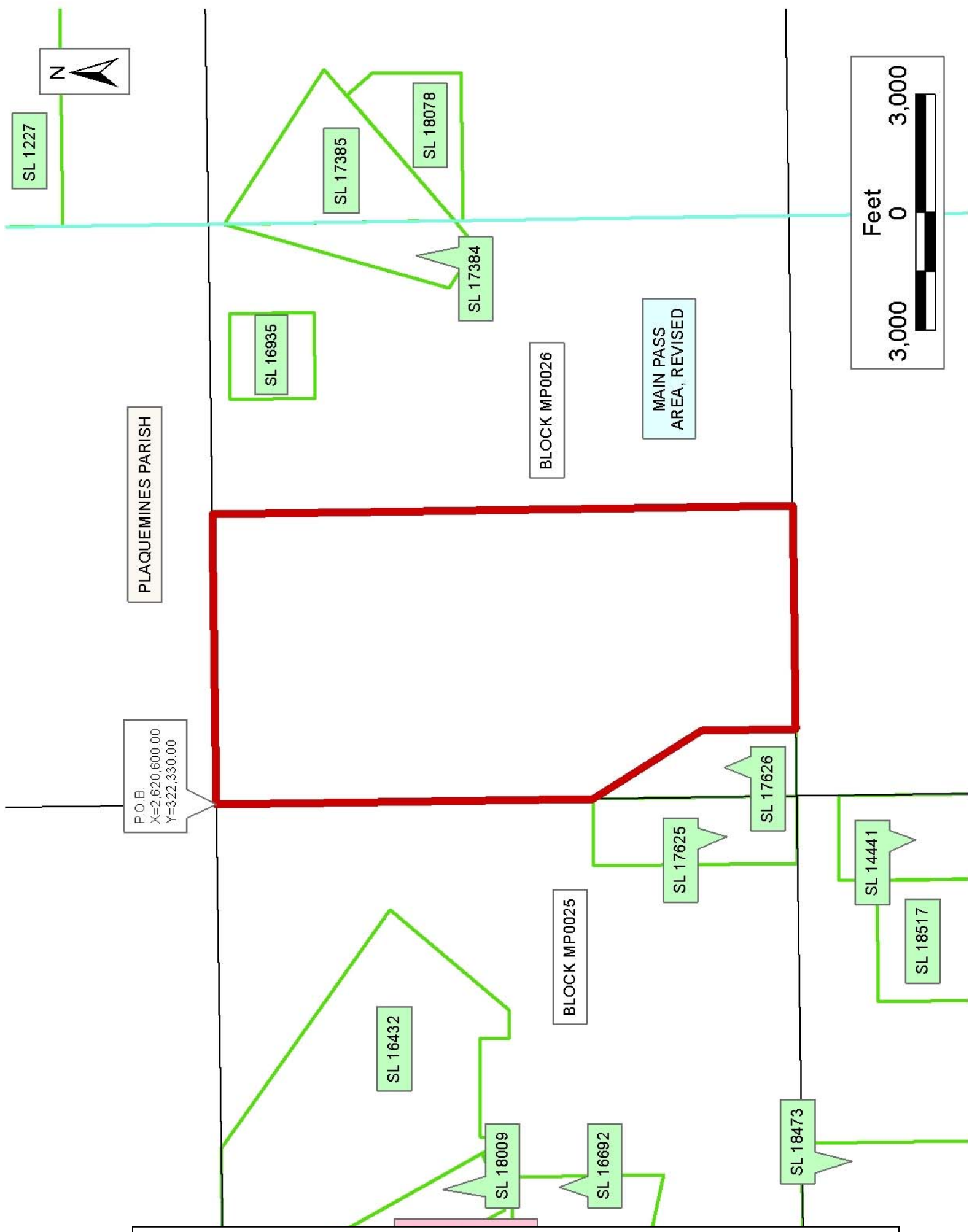
NOTE: The above description of the Tract nominated for lease has been provided and corrected, where required, exclusively by the nomination party. Any mineral lease selected from this Tract and awarded by the Louisiana State Mineral Board shall be without warranty of any kind, either express, implied, or statutory, including, but not limited to, the implied warranties of merchantability and fitness for a particular purpose. Should the mineral lease awarded by the Louisiana State Mineral Board be subsequently modified, cancelled or abrogated due to the existence of conflicting leases, operating agreements, private claims or other future obligations or conditions which may affect all or any portion of the leased Tract, it shall not relieve the Lessee of the obligation to pay any bonus due thereon to the Louisiana State Mineral Board, nor shall the Louisiana State Mineral Board be obligated to refund any consideration paid by the Lessor prior to such modification, cancellation, or abrogation, including, but not limited to, bonuses, rentals and royalties.

NOTE: The State of Louisiana does hereby reserve, and this lease shall be subject to, the imprescriptible right of surface use in the nature of a servitude in favor of the Department of Natural Resources, including its Offices and Commissions, for the sole purpose of implementing,

constructing, servicing and maintaining approved coastal zone management and/or restoration projects. Utilization of any and all rights derived under this lease by the mineral lessee, its agents, successors or assigns, shall not interfere with nor hinder the reasonable surface use by the Department of Natural Resources, its Offices or Commissions, as herein above reserved.

Applicant: ROBERT A. SCHROEDER, INC.

Bidder	Cash Payment	Price/ Acre	Rental	Oil	Gas	Other



TRACT 37580 - Portion of Block 25, Main Pass Area, Revised, Plaquemines Parish, Louisiana

All of the lands now or formerly constituting the beds and bottoms of all water bodies of every nature and description the title of which vests in the State of Louisiana, together with all islands arising therein and other lands formed by accretion or by reliction, where allowed by law, excepting tax adjudicated lands, and not presently under mineral lease on July 13, 2005, situated in Plaquemines Parish, Louisiana, and more particularly described as follows: Beginning at a point having Coordinates of X = 2,620,600.00 and Y = 322,330.00, said point being the Northeast corner of Block 25, Main Pass Area, Revised; Thence South 9,565.00 feet on and along the East line of said Block 25, Main Pass Area, Revised, to a point having Coordinates of X = 2,620,600.00 and Y = 312,765.00, said point being the Northeast corner of State of Lease No. 17625; Thence on and along the Northern and Western boundaries of said State Lease No. 17625 the following courses and distances, to wit: West 1,700.00 feet to a point having Coordinates of X = 2,618,900.00 and Y = 312,765.00, said point being the Northwest corner of said State Lease No. 17625; and South 5,185.00 feet to a point having Coordinates of X = 2,618,900.00 and Y = 307,580.00, said point being the Southwest corner of said State Lease No. 17625, said point also being on the South line of said Block 25, Main Pass Area, Revised; Thence West 5,675.00 feet on and along said South line of said Block 25, Main Pass Area, Revised, to a point having Coordinates of X = 2,613,225.00 and Y = 307,580.00; Thence North 8,150.00 feet to a point having Coordinates of X = 2,613,225.00 and Y = 315,730.00, said point being on the Southern boundary of State Lease No. 16432; Thence on and along the Southern and Eastern boundaries of said State Lease No. 16432 the following courses and distances, to wit: East 1,325.00 feet to a point having Coordinates of X = 2,614,550.00 and Y = 315,730.00, South 775.00 feet to a point having Coordinates of X = 2,614,550.00 and Y = 314,955.00, East 700.00 feet to a point having Coordinates of X = 2,615,250.00 and Y = 314,955.00, North 40 degrees 54 minutes 52 seconds East 3,969.89 feet to a point having Coordinates of X = 2,617,850.00 and Y = 317,955.00, and North 53 degrees 54 minutes 06 seconds West 7,425.67 feet to a point having Coordinates of X = 2,611,850.00 and Y = 322,330.00, said point being the Northern most Northeast corner of said State Lease No. 16432, said point also being on the North line of said Block 25, Main Pass Area, Revised; Thence East 8,750.00 feet on and along said north line of said Block 25, Main Pass Area, Revised, to the point of beginning, containing approximately **1,926.29 acres**, all as more particularly outlined on a plat on file in the Office of Mineral Resources, Department of Natural Resources. All bearings, distances and coordinates are based on Louisiana Coordinate System of 1927, (North or South Zone), where applicable.

NOTE: The above description of the Tract nominated for lease has been provided and corrected, where required, exclusively by the nomination party. Any mineral lease selected from this Tract and awarded by the Louisiana State Mineral Board shall be without warranty of any kind, either express, implied, or statutory, including, but not limited to, the

implied warranties of merchantability and fitness for a particular purpose. Should the mineral lease awarded by the Louisiana State Mineral Board be subsequently modified, cancelled or abrogated due to the existence of conflicting leases, operating agreements, private claims or other future obligations or conditions which may affect all or any portion of the leased Tract, it shall not relieve the Lessee of the obligation to pay any bonus due thereon to the Louisiana State Mineral Board, nor shall the Louisiana State Mineral Board be obligated to refund any consideration paid by the Lessor prior to such modification, cancellation, or abrogation, including, but not limited to, bonuses, rentals and royalties.

NOTE: The State of Louisiana does hereby reserve, and this lease shall be subject to, the imprescriptible right of surface use in the nature of a servitude in favor of the Department of Natural Resources, including its Offices and Commissions, for the sole purpose of implementing, constructing, servicing and maintaining approved coastal zone management and/or restoration projects. Utilization of any and all rights derived under this lease by the mineral lessee, its agents, successors or assigns, shall not interfere with nor hinder the reasonable surface use by the Department of Natural Resources, its Offices or Commissions, as herein above reserved.

Applicant: ROBERT A. SCHROEDER, INC.

Bidder	Cash Payment	Price/ Acre	Rental	Oil	Gas	Other



P.O.B.
X=2,620,800.00
Y=3,22,330.00

PLAQUEMINES PARISH

MAIN PASS
AREA, REVISED

BLOCK MP0026

BLOCK MP0025

SL 16432

SL 18009

SL 16819

SL 16692

SL 17625

SL 17626

SL 14441

SL 18517

SL 18473

