

TRACT 37561 - St. Mary Parish, Louisiana

All of the lands now or formerly constituting the beds and bottoms of all water bodies of every nature and description the title of which vests in the State of Louisiana, together with all islands arising therein and other lands formed by accretion or by reliction, where allowed by law, excepting tax adjudicated lands, and not presently under mineral lease on July 13, 2005, situated in St. Mary Parish, Louisiana, and more particularly described as follows: Beginning at a point having Coordinates of X = 2,048,576.94 and Y = 354,211.37; thence North 88 degrees 51 minutes 18 seconds East 10,507.85 feet to a point having Coordinates of X = 2,059,082.69 and Y = 354,421.35; thence South 00 degrees 21 minutes 00 seconds East 5,365.46 feet to a point having Coordinates of X = 2,059,115.46 and Y = 349,055.99; thence South 88 degrees 40 minutes 49 seconds West 10,487.66 feet to a point having Coordinates of X = 2,048,630.58 and Y = 348,814.42; thence North 00 degrees 34 minutes 10 seconds West 5,397.22 feet to the point of beginning, **LESS AND EXCEPT** that portion, if any, which may lie within State Lease No. 341, containing approximately **48 acres**, all as more particularly outlined on a plat on file in the Office of Mineral Resources, Department of Natural Resources. All bearings, distances and coordinates are based on Louisiana Coordinate System of 1927, (North or South Zone), where applicable.

NOTE: The above description of the Tract nominated for lease has been provided and corrected, where required, exclusively by the nomination party. Any mineral lease selected from this Tract and awarded by the Louisiana State Mineral Board shall be without warranty of any kind, either express, implied, or statutory, including, but not limited to, the implied warranties of merchantability and fitness for a particular purpose. Should the mineral lease awarded by the Louisiana State Mineral Board be subsequently modified, cancelled or abrogated due to the existence of conflicting leases, operating agreements, private claims or other future obligations or conditions which may affect all or any portion of the leased Tract, it shall not relieve the Lessee of the obligation to pay any bonus due thereon to the Louisiana State Mineral Board, nor shall the Louisiana State Mineral Board be obligated to refund any consideration paid by the Lessor prior to such modification, cancellation, or abrogation, including, but not limited to, bonuses, rentals and royalties.

NOTE: A portion of the acreage in the above described tract is described in the Judgement of the 16th Judicial Court District Court, in that matter styled State of Louisiana v. Avoca Incorporated, recorded in C.O.B. 10-E Pg. 593, June 27, 1958 in the records of St Mary Parish, Louisiana.

NOTE: The State of Louisiana does hereby reserve, and this lease shall be subject to, the imprescriptible right of surface use in the nature of a servitude in favor of the Department of Natural Resources, including its Offices and Commissions, for the sole purpose of implementing, constructing, servicing and maintaining approved coastal zone management and/or restoration projects. Utilization of any and all rights derived

under this lease by the mineral lessee, its agents, successors or assigns, shall not interfere with nor hinder the reasonable surface use by the Department of Natural Resources, its Offices or Commissions, as herein above reserved.

Applicant: ACADIAN LAND SERVICES, L.L.C.

Bidder	Cash Payment	Price/Acre	Rental	Oil	Gas	Other



T17S - R13E

T16S - R13E

ST MARY PARISH

SIX MILE LAKE

LAWRENCE BAYOU

ROCK BAYOU

T16S - R12E

P.O.B.
X=2,048,576.94
Y=354,211.37

SL 341

BAYOU SHAFFER

TRACT 37562 - Plaquemines Parish, Louisiana

All of the lands now or formerly constituting the beds and bottoms of all water bodies of every nature and description the title of which vests in the State of Louisiana, together with all islands arising therein and other lands formed by accretion or by reliction, where allowed by law, excepting tax adjudicated lands, and not presently under mineral lease on July 13, 2005, situated in Plaquemines Parish, Louisiana, and more particularly described as follows: Beginning at a point having Coordinates of X = 2,534,778.00 and Y = 343,157.00; thence South 50 degrees 23 minutes 02 seconds East 3,222.05 feet to a point having Coordinates of X = 2,537,260.05 and Y = 341,102.49; thence South 43 degrees 06 minutes 20 seconds West 7,709.23 feet to a point having Coordinates of X = 2,531,992.00 and Y = 335,474.00; thence North 46 degrees 16 minutes 09 seconds West 3,224.49 feet to a point having Coordinates of X = 2,529,662.00 and Y = 337,703.00; thence North 43 degrees 10 minutes 06 seconds East 7,477.94 feet to the point of beginning containing approximately **482 acres**, all as more particularly outlined on a plat on file in the Office of Mineral Resources, Department of Natural Resources. All bearings, distances and coordinates are based on Louisiana Coordinate System of 1927, (North or South Zone), where applicable.

NOTE: The above description of the Tract nominated for lease has been provided and corrected, where required, exclusively by the nomination party. Any mineral lease selected from this Tract and awarded by the Louisiana State Mineral Board shall be without warranty of any kind, either express, implied, or statutory, including, but not limited to, the implied warranties of merchantability and fitness for a particular purpose. Should the mineral lease awarded by the Louisiana State Mineral Board be subsequently modified, cancelled or abrogated due to the existence of conflicting leases, operating agreements, private claims or other future obligations or conditions which may affect all or any portion of the leased Tract, it shall not relieve the Lessee of the obligation to pay any bonus due thereon to the Louisiana State Mineral Board, nor shall the Louisiana State Mineral Board be obligated to refund any consideration paid by the Lessor prior to such modification, cancellation, or abrogation, including, but not limited to, bonuses, rentals and royalties.

NOTE: The State of Louisiana does hereby reserve, and this lease shall be subject to, the imprescriptible right of surface use in the nature of a servitude in favor of the Department of Natural Resources, including its Offices and Commissions, for the sole purpose of implementing, constructing, servicing and maintaining approved coastal zone management and/or restoration projects. Utilization of any and all rights derived under this lease by the mineral lessee, its agents, successors or assigns, shall not interfere with nor hinder the reasonable surface use by the Department of Natural Resources, its Offices or Commissions, as herein above reserved.

NOTE: The Department of Wildlife and Fisheries has designated certain areas in the coastal waters of the State of Louisiana as Oyster Seed Bed Areas. The exact location of those Seed Bed Areas must be obtained from the Department of Wildlife and Fisheries and any work done under a mineral lease from the State of Louisiana may necessarily be conducted in conformity with the rules and regulations promulgated by the said Department of Wildlife and Fisheries for Oyster Seed Bed Areas.

Applicant: MINERAL SERVICES, INC.

Bidder	Cash Payment	Price/Acre	Rental	Oil	Gas	Other



BAY GARDENE

P.O.B.
X=2,534,778.00
Y=343,157.00



T17S-R15E

PLAQUEMINES PARISH

FONTANELLE
BAYOU

TRACT 37563 - St. Mary Parish, Louisiana

All of the lands now or formerly constituting the beds and bottoms of all water bodies of every nature and description the title of which vests in the State of Louisiana, together with all islands arising therein and other lands formed by accretion or by reliction, where allowed by law, excepting tax adjudicated lands, and not presently under mineral lease on July 13, 2005, situated in St. Mary Parish, Louisiana, and more particularly described as follows: Beginning at a point having Coordinates of X = 2,048,276.16 and Y = 348,806.26; thence North 88 degrees 40 minutes 52 seconds East 354.51 feet to a point having Coordinates of X = 2,048,630.58 and Y = 348,814.42; thence North 88 degrees 40 minutes 49 seconds East 10,487.66 feet to a point having Coordinates of X = 2,059,115.46 and Y = 349,055.99; thence North 89 degrees 40 minutes 36 seconds East 5,089.14 feet to a point having Coordinates of X = 2,064,204.52 and Y = 349,084.72; thence South 33 degrees 53 minutes 22 seconds East 1,250.39 feet to a point having Coordinates of X = 2,064,901.73 and Y = 348,046.75; thence South 00 degrees 50 minutes 58 seconds East 4,494.01 feet to a point having Coordinates of X = 2,064,968.35 and Y = 343,553.23; thence South 89 degrees 25 minutes 10 seconds West 16,567.88 feet to a point having Coordinates of X = 2,048,401.32 and Y = 343,385.32; thence North 01 degree 19 minutes 21 seconds West 5422.38 feet to the point of beginning, **LESS AND EXCEPT** that portion, if any, which may lie within State Lease No. 341, containing approximately **71.00 acres**, all as more particularly outlined on a plat on file in the Office of Mineral Resources, Department of Natural Resources. All bearings, distances and coordinates are based on Louisiana Coordinate System of 1927, (North or South Zone), where applicable.

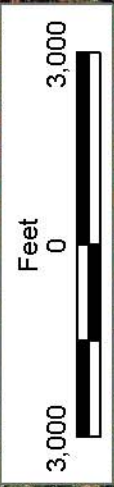
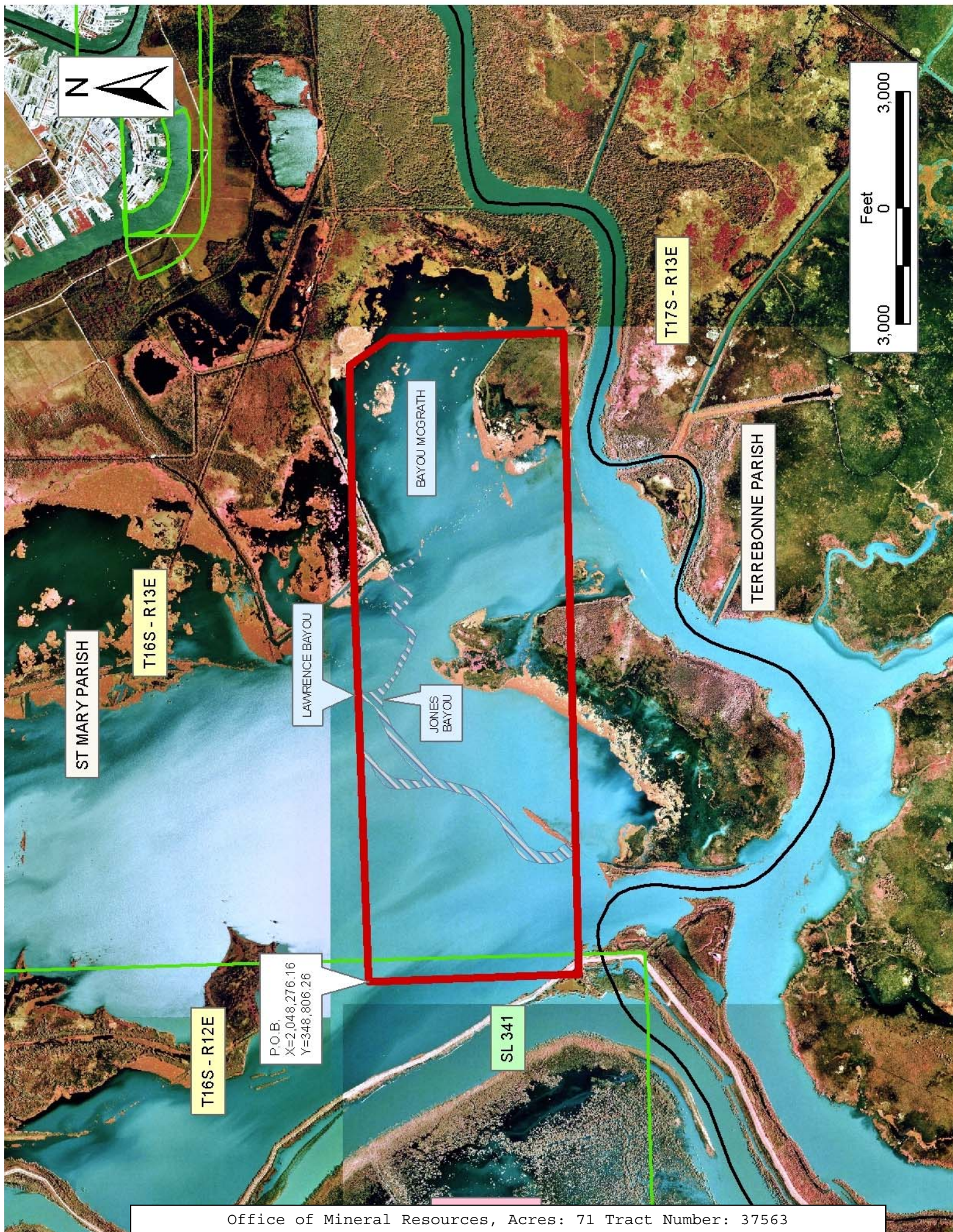
NOTE: The above description of the Tract nominated for lease has been provided and corrected, where required, exclusively by the nomination party. Any mineral lease selected from this Tract and awarded by the Louisiana State Mineral Board shall be without warranty of any kind, either express, implied, or statutory, including, but not limited to, the implied warranties of merchantability and fitness for a particular purpose. Should the mineral lease awarded by the Louisiana State Mineral Board be subsequently modified, cancelled or abrogated due to the existence of conflicting leases, operating agreements, private claims or other future obligations or conditions which may affect all or any portion of the leased Tract, it shall not relieve the Lessee of the obligation to pay any bonus due thereon to the Louisiana State Mineral Board, nor shall the Louisiana State Mineral Board be obligated to refund any consideration paid by the Lessor prior to such modification, cancellation, or abrogation, including, but not limited to, bonuses, rentals and royalties.

NOTE: A portion of the acreage in the above described tract is described in the Judgement of the 16th Judicial Court District Court, in that matter styled State of Louisiana v. Avoca Incorporated, recorded in C.O.B. 10-E Pg. 593, June 27, 1958 in the records of St Mary Parish, Louisiana.

NOTE: The State of Louisiana does hereby reserve, and this lease shall be subject to, the imprescriptible right of surface use in the nature of a servitude in favor of the Department of Natural Resources, including its Offices and Commissions, for the sole purpose of implementing, constructing, servicing and maintaining approved coastal zone management and/or restoration projects. Utilization of any and all rights derived under this lease by the mineral lessee, its agents, successors or assigns, shall not interfere with nor hinder the reasonable surface use by the Department of Natural Resources, its Offices or Commissions, as herein above reserved.

Applicant: ACADIAN LAND SERVICES, L.L.C.

Bidder	Cash Payment	Price/Acre	Rental	Oil	Gas	Other



ST MARY PARISH

T16S - R13E

T17S - R13E

TERREBONNE PARISH

BAYOU MCGRATH

LAWRENCE BAYOU

JONES BAYOU

T16S - R12E

P.O.B.
X=2,048,276.16
Y=348,806.26

SL 341

TRACT 37564 - Plaquemines Parish, Louisiana

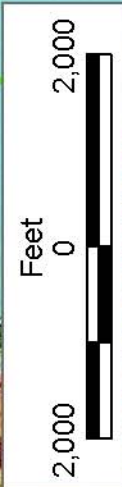
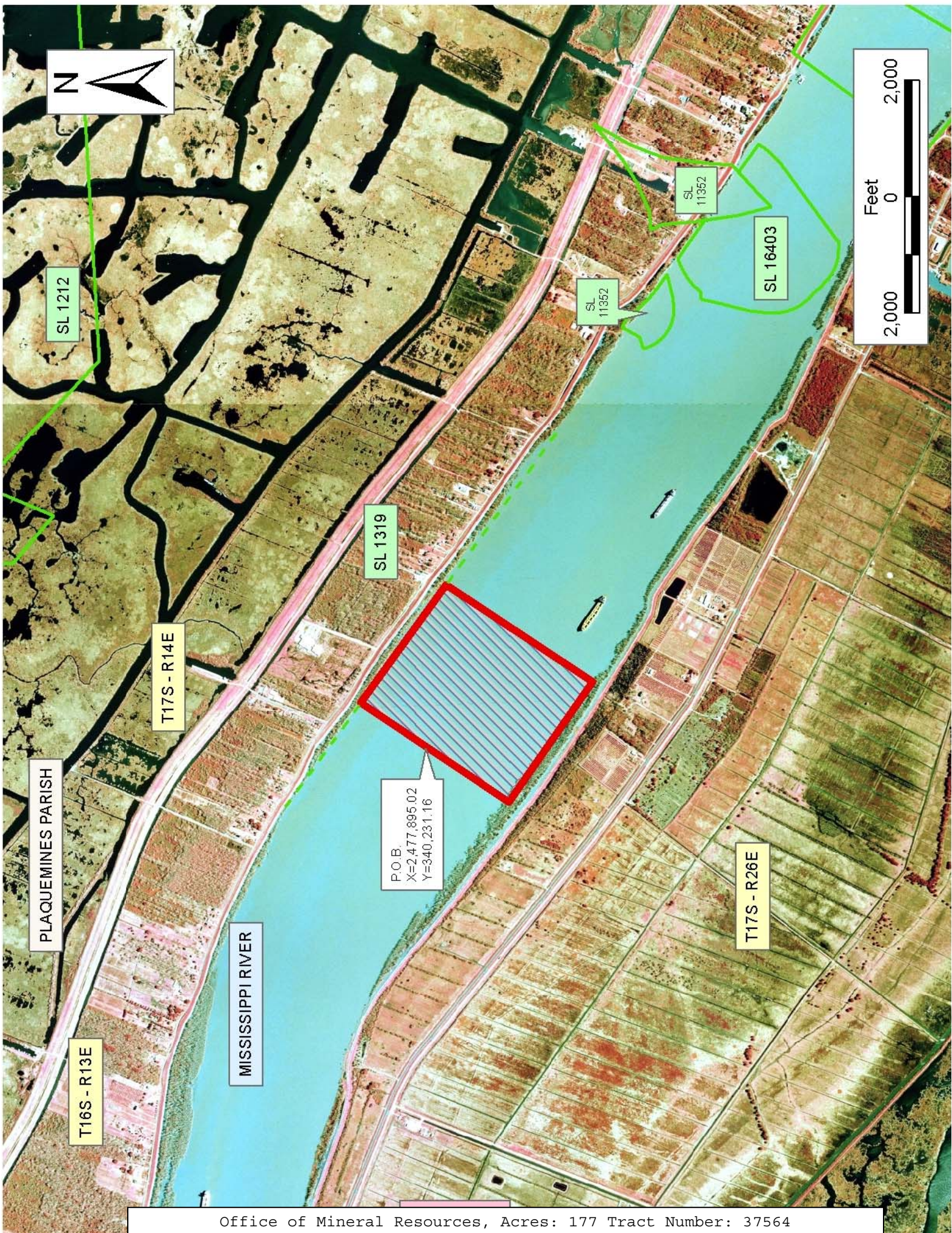
All of the lands now or formerly constituting the beds and bottoms of all water bodies of every nature and description the title of which vests in the State of Louisiana, together with all islands arising therein and other lands formed by accretion or by reliction, where allowed by law, excepting tax adjudicated lands, and not presently under mineral lease on July 13, 2005, situated in Plaquemines Parish, Louisiana, and more particularly described as follows: Beginning at a point having Coordinates of X = 2,477,895.02 and Y = 340,231.16; thence North 34 degrees 26 minutes 00 seconds East approximately 1536 feet to a point on the Southern boundary of State Lease No. 1319, as amended, also said to be the left descending bank of the Mississippi River; thence Southeasterly approximately 2505 feet along the Southern boundary of said State Lease No. 1319 to a point of intersection with a line bearing North 34 degrees 26 minutes 00 seconds East extended from a point having Coordinates of X = 2,479,917.19 and Y = 338,752.12; thence South 34 degrees 26 minutes 00 seconds West approximately 1547 feet along said line to said point having Coordinates of X = 2,479,917.19 and Y = 338,752.12; thence South 34 degrees 26 minutes 00 seconds West approximately 1507 feet to a point on the right descending bank of said Mississippi River; thence Northwesterly approximately 2505 feet along said descending bank to a point of intersection with a line bearing South 34 degrees 26 minutes 00 seconds West extended from a point having Coordinates of X = 2,477,895.02 and Y = 340,231.16; thence North 34 degrees 26 minutes 00 seconds East approximately 1535 feet along said line to said point of beginning, **LESS AND EXCEPT** that portion, if any, of the above described tract which may lie within State Lease No. 1319, as amended, containing approximately **177 acres**, all as more particularly outlined on a plat on file in the Office of Mineral Resources, Department of Natural Resources. All bearings, distances and coordinates are based on Louisiana Coordinate System of 1927, (North or South Zone), where applicable.

NOTE: The above description of the Tract nominated for lease has been provided and corrected, where required, exclusively by the nomination party. Any mineral lease selected from this Tract and awarded by the Louisiana State Mineral Board shall be without warranty of any kind, either express, implied, or statutory, including, but not limited to, the implied warranties of merchantability and fitness for a particular purpose. Should the mineral lease awarded by the Louisiana State Mineral Board be subsequently modified, cancelled or abrogated due to the existence of conflicting leases, operating agreements, private claims or other future obligations or conditions which may affect all or any portion of the leased Tract, it shall not relieve the Lessee of the obligation to pay any bonus due thereon to the Louisiana State Mineral Board, nor shall the Louisiana State Mineral Board be obligated to refund any consideration paid by the Lessor prior to such modification, cancellation, or abrogation, including, but not limited to, bonuses, rentals and royalties.

NOTE: The State of Louisiana does hereby reserve, and this lease shall be subject to, the imprescriptible right of surface use in the nature of a servitude in favor of the Department of Natural Resources, including its Offices and Commissions, for the sole purpose of implementing, constructing, servicing and maintaining approved coastal zone management and/or restoration projects. Utilization of any and all rights derived under this lease by the mineral lessee, its agents, successors or assigns, shall not interfere with nor hinder the reasonable surface use by the Department of Natural Resources, its Offices or Commissions, as herein above reserved.

Applicant: ROBERT D. FAIN

Bidder	Cash Payment	Price/Acre	Rental	Oil	Gas	Other



SL 1212

SL 11352

SL 16403

SL 11352

SL 1319

T17S - R14E

PLAQUEMINES PARISH

T16S - R13E

MISSISSIPPI RIVER

T17S - R26E

POB
X=2,477,895.02
Y=340,231.16

TRACT 37565 - Plaquemines Parish, Louisiana

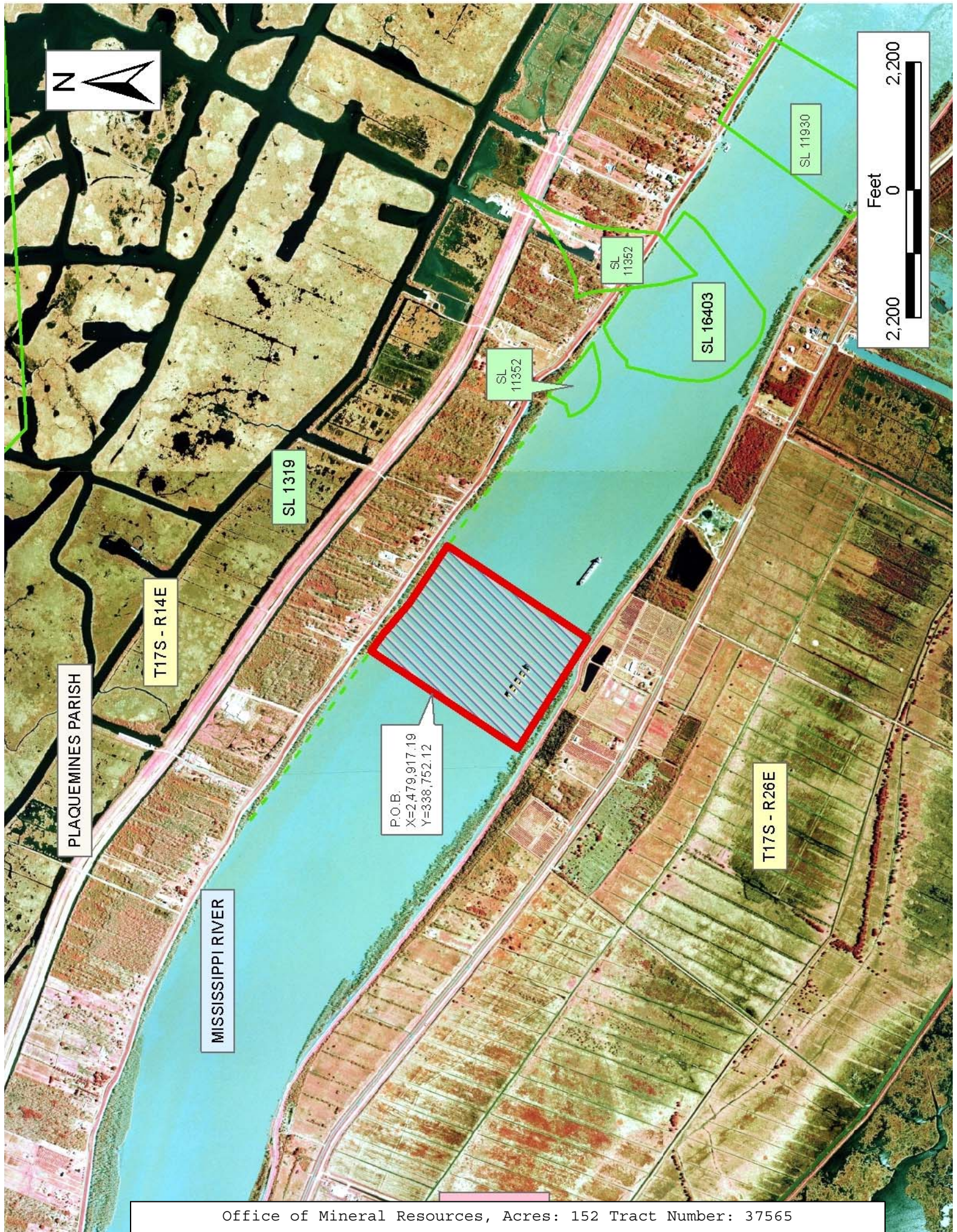
All of the lands now or formerly constituting the beds and bottoms of all water bodies of every nature and description the title of which vests in the State of Louisiana, together with all islands arising therein and other lands formed by accretion or by reliction, where allowed by law, excepting tax adjudicated lands, and not presently under mineral lease on July 13, 2005, situated in Plaquemines Parish, Louisiana, and more particularly described as follows: Beginning at a point having Coordinates of X = 2,479,917.19 and Y = 338,752.12; thence North 34 degrees 26 minutes 00 seconds East approximately 1547 feet to a point on the Southern boundary of State Lease No. 1319, as amended, also said to be the left descending bank of the Mississippi River; thence Southeasterly approximately 2248 feet along the Southern boundary of said State Lease No. 1319 to a point of intersection with a line bearing North 34 degrees 26 minutes 00 seconds East extended from a point having Coordinates of X = 2,481,765.40 and Y = 337,481.13; thence South 34 degrees 26 minutes 00 seconds West approximately 1451 feet along said line to said point having Coordinates of X = 2,481,765.40 and Y = 337,481.13; thence South 34 degrees 26 minutes 00 seconds West approximately 1451 feet to a point on the right descending bank of said Mississippi River; thence Northwesterly approximately 2244 feet along said descending bank to a point of intersection with a line bearing South 34 degrees 26 minutes 00 seconds West extended from a point having Coordinates of X = 2,479,917.19 and Y = 338,752.12; thence North 34 degrees 26 minutes 00 seconds East approximately 1507 feet along said line to said point of beginning, **LESS AND EXCEPT** that portion, if any, of the above described tract which may lie within State Lease No. 1319, as amended, containing approximately **152 acres**, all as more particularly outlined on a plat on file in the Office of Mineral Resources, Department of Natural Resources. All bearings, distances and coordinates are based on Louisiana Coordinate System of 1927, (North or South Zone), where applicable.

NOTE: The above description of the Tract nominated for lease has been provided and corrected, where required, exclusively by the nomination party. Any mineral lease selected from this Tract and awarded by the Louisiana State Mineral Board shall be without warranty of any kind, either express, implied, or statutory, including, but not limited to, the implied warranties of merchantability and fitness for a particular purpose. Should the mineral lease awarded by the Louisiana State Mineral Board be subsequently modified, cancelled or abrogated due to the existence of conflicting leases, operating agreements, private claims or other future obligations or conditions which may affect all or any portion of the leased Tract, it shall not relieve the Lessee of the obligation to pay any bonus due thereon to the Louisiana State Mineral Board, nor shall the Louisiana State Mineral Board be obligated to refund any consideration paid by the Lessor prior to such modification, cancellation, or abrogation, including, but not limited to, bonuses, rentals and royalties.

NOTE: The State of Louisiana does hereby reserve, and this lease shall be subject to, the imprescriptible right of surface use in the nature of a servitude in favor of the Department of Natural Resources, including its Offices and Commissions, for the sole purpose of implementing, constructing, servicing and maintaining approved coastal zone management and/or restoration projects. Utilization of any and all rights derived under this lease by the mineral lessee, its agents, successors or assigns, shall not interfere with nor hinder the reasonable surface use by the Department of Natural Resources, its Offices or Commissions, as herein above reserved.

Applicant: ROBERT D. FAIN

Bidder	Cash Payment	Price/Acre	Rental	Oil	Gas	Other



TRACT 37566 - Portion of Block 32, Breton Sound Area, Plaquemines Parish, Louisiana

All of the lands now or formerly constituting the beds and bottoms of all water bodies of every nature and description the title of which vests in the State of Louisiana, together with all islands arising therein and other lands formed by accretion or by reliction, where allowed by law, excepting tax adjudicated lands, and not presently under mineral lease on July 13, 2005, situated in Plaquemines Parish, Louisiana, and more particularly described as follows: Beginning at a point having Coordinates of X = 2,650,100.00 and Y = 337,080.00, said point being the Northeast corner of Block 32, Breton Sound Area; Thence South 11,062.50 feet along the East line of said Block 32 to a point having Coordinates of X = 2,650,100.00 and Y = 326,017.50; Thence West 3,500.00 feet to a point having Coordinates of X = 2,646,600.00 and Y = 326,017.50, said point being the Southeast corner of State Lease No. 1227, as amended; Thence North 11,062.50 feet along the Eastern boundary and/or a projection thereof said State Lease No. 1227, to a point having Coordinates of X = 2,646,600.00 and Y = 337,080.00, said point being the Northeast corner of said State Lease No. 1227, said point also being on the North line of said Block 32; Thence East 3,500.00 feet along the North line of said Block 32, to the point of beginning, containing approximately **888.86 acres**, all as more particularly outlined on a plat on file in the Office of Mineral Resources, Department of Natural Resources. All bearings, distances and coordinates are based on Louisiana Coordinate System of 1927, (North or South Zone), where applicable.

NOTE: The above description of the Tract nominated for lease has been provided and corrected, where required, exclusively by the nomination party. Any mineral lease selected from this Tract and awarded by the Louisiana State Mineral Board shall be without warranty of any kind, either express, implied, or statutory, including, but not limited to, the implied warranties of merchantability and fitness for a particular purpose. Should the mineral lease awarded by the Louisiana State Mineral Board be subsequently modified, cancelled or abrogated due to the existence of conflicting leases, operating agreements, private claims or other future obligations or conditions which may affect all or any portion of the leased Tract, it shall not relieve the Lessee of the obligation to pay any bonus due thereon to the Louisiana State Mineral Board, nor shall the Louisiana State Mineral Board be obligated to refund any consideration paid by the Lessor prior to such modification, cancellation, or abrogation, including, but not limited to, bonuses, rentals and royalties.

NOTE: The State of Louisiana does hereby reserve, and this lease shall be subject to, the imprescriptible right of surface use in the nature of a servitude in favor of the Department of Natural Resources, including its Offices and Commissions, for the sole purpose of implementing, constructing, servicing and maintaining approved coastal zone management and/or restoration projects. Utilization of any and all rights derived under this lease by the mineral lessee, its agents, successors or assigns,

shall not interfere with nor hinder the reasonable surface use by the Department of Natural Resources, its Offices or Commissions, as herein above reserved.

Applicant: ROBERT A. SCHROEDER, INC.

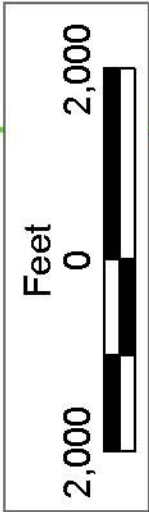
Bidder	Cash Payment	Price/Acre	Rental	Oil	Gas	Other



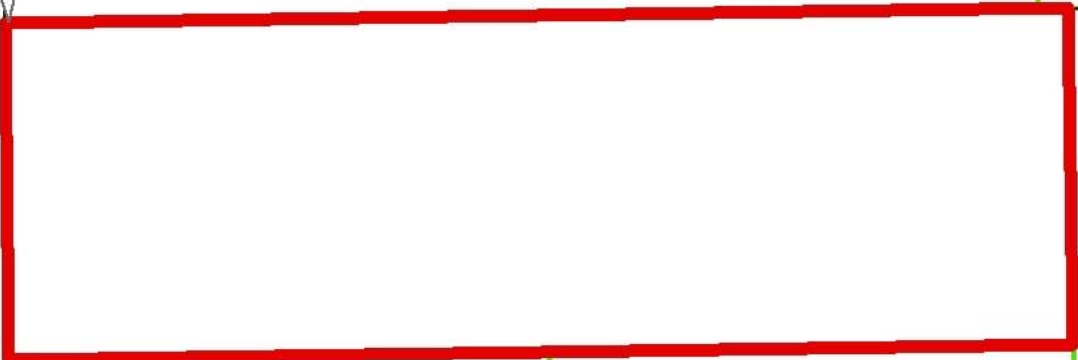
PLAQUEMINES PARISH

P.O.B.
X=2,650,100.00
Y=337,080.00

BLOCK BS0031



SL 4407



BLOCK BS0017

BRETON SOUND AREA

BLOCK BS0032

SL 1227

TRACT 37567 - Portion of Block 21, Main Pass Area, Revised, Plaquemines Parish, Louisiana

All of the lands now or formerly constituting the beds and bottoms of all water bodies of every nature and description the title of which vests in the State of Louisiana, together with all islands arising therein and other lands formed by accretion or by reliction, where allowed by law, excepting tax adjudicated lands, and not presently under mineral lease on July 13, 2005, situated in Plaquemines Parish, Louisiana, and more particularly described as follows: Beginning at the Northeast corner of Block 21, Main Pass Area, Revised, having Coordinates of X = 2,635,350.00 and Y = 337,080.00; thence South 1,900.00 feet along the East line of said Block 21 to the North corner of State Lease No. 4708, as amended, having Coordinates of X = 2,635,350.00 and Y = 335,180.00; thence along the Northern and Western boundaries of said State Lease No. 4708 the following: South 68 degrees 11 minutes 55 seconds West 2,154.07 feet to a point, South 63 degrees 26 minutes 06 seconds West 1,118.03 feet to a point, South 57 degrees 59 minutes 41 seconds West 943.40 feet to a point, South 45 degrees 00 minutes 00 seconds West 707.11 feet to a point, South 30 degrees 57 minutes 50 seconds West 583.10 feet to a point, South 21 degrees 48 minutes 05 seconds West 538.52 feet to a point and South 366.95 feet to a point on the Northern boundary of State Lease No. 15536, as amended; thence along the boundaries of said State Lease No. 15536 the following: West 1,673.00 feet to a point, South 3,835.05 feet to a point, East 3,591.00 feet to a point and North 13 degrees 38 minutes 58 seconds West 2,188.40 feet to a point on the Southern boundary of said State Lease No. 4708; thence along the Southern boundary of said State Lease No. 4708 the following: South 75 degrees 57 minutes 52 seconds East 513.76 feet to a point, East 500.00 feet to a point and North 85 degrees 14 minutes 11 seconds East 2,408.32 feet to a point on the East line of said Block 21 having Coordinates of X = 2,635,350.00 and Y = 329,880.00; thence South 7,550.00 feet along the East line of said Block 21 to its Southeast corner having Coordinates of X = 2,635,350.00 and Y = 322,330.00; thence West 7,375.00 feet along the South line of said Block 21 to a point having Coordinates of X = 2,627,975.00 and Y = 322,330.00; thence North 14,750.00 feet to a point on the North line of said Block 21 having Coordinates of X = 2,627,975.00 and Y = 337,080.00; thence East 7,375.00 feet along the North line of said Block 21 to the point of beginning, containing approximately **1,799.16 acres**, all as more particularly outlined on a plat on file in the Office of Mineral Resources, Department of Natural Resources. All bearings, distances and coordinates are based on Louisiana Coordinate System of 1927, (North or South Zone), where applicable.

NOTE: The above description of the Tract nominated for lease has been provided and corrected, where required, exclusively by the nomination party. Any mineral lease selected from this Tract and awarded by the Louisiana State Mineral Board shall be without warranty of any kind, either express, implied, or statutory, including, but not limited to, the implied warranties of merchantability and fitness for a particular purpose. Should the mineral lease awarded by the Louisiana State Mineral

Board be subsequently modified, cancelled or abrogated due to the existence of conflicting leases, operating agreements, private claims or other future obligations or conditions which may affect all or any portion of the leased Tract, it shall not relieve the Lessee of the obligation to pay any bonus due thereon to the Louisiana State Mineral Board, nor shall the Louisiana State Mineral Board be obligated to refund any consideration paid by the Lessor prior to such modification, cancellation, or abrogation, including, but not limited to, bonuses, rentals and royalties.

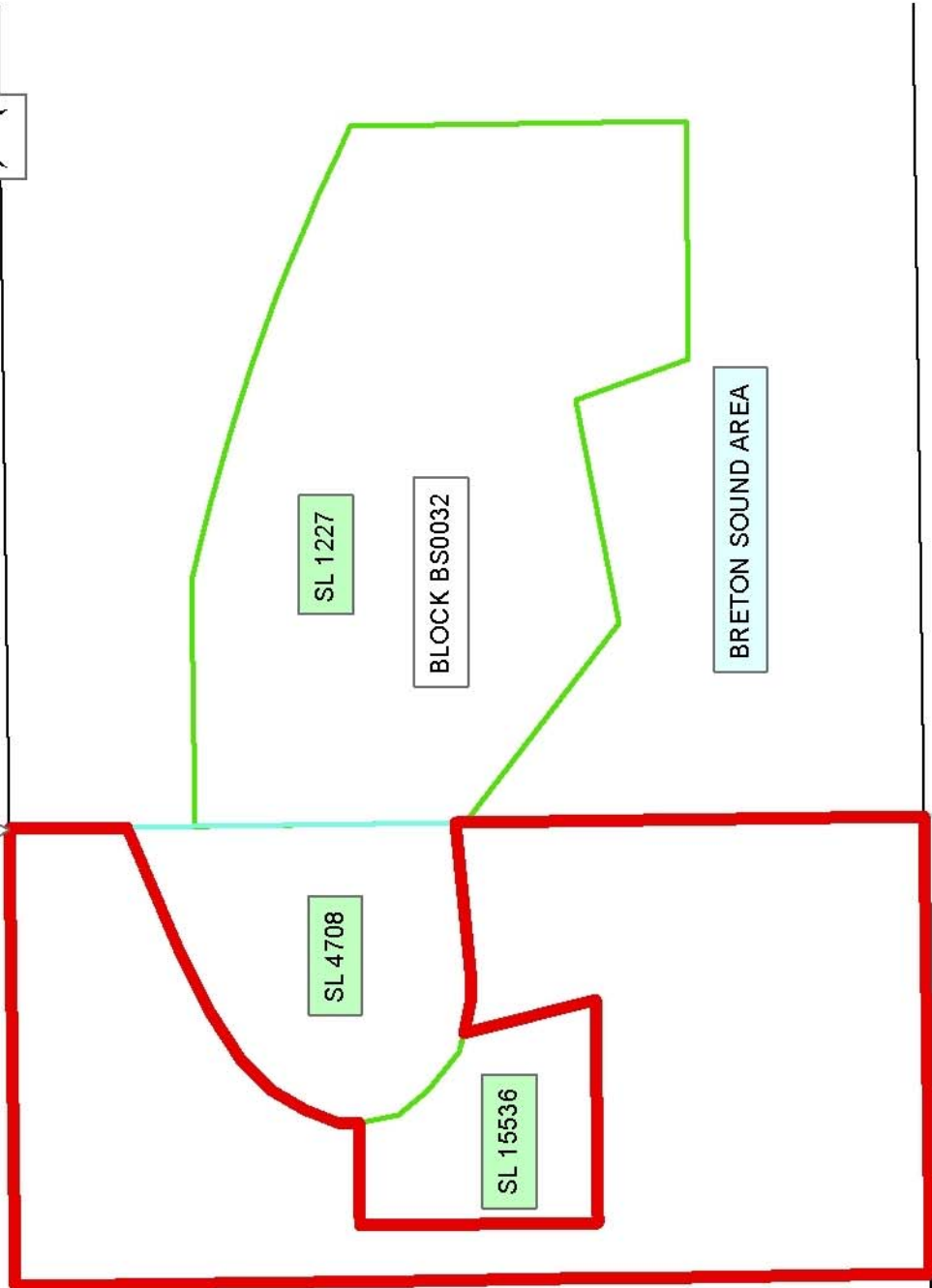
NOTE: The State of Louisiana does hereby reserve, and this lease shall be subject to, the imprescriptible right of surface use in the nature of a servitude in favor of the Department of Natural Resources, including its Offices and Commissions, for the sole purpose of implementing, constructing, servicing and maintaining approved coastal zone management and/or restoration projects. Utilization of any and all rights derived under this lease by the mineral lessee, its agents, successors or assigns, shall not interfere with nor hinder the reasonable surface use by the Department of Natural Resources, its Offices or Commissions, as herein above reserved.

Applicant: ROBERT A. SCHROEDER, INC.

Bidder	Cash Payment	Price/Acre	Rental	Oil	Gas	Other



P.O.B.
X=2,635,350.00
Y=337,080.00



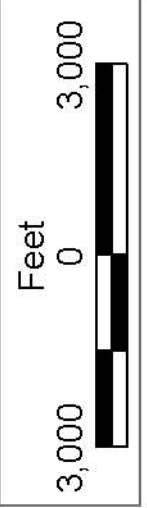
PLAQUEMINES PARISH

BLOCK MP0021

MAIN PASS
AREA, REVISED

BLOCK BS0032

BRETON SOUND AREA



TRACT 37568 - Portion of Block 21, Main Pass Area, Revised, Plaquemines Parish, Louisiana

All of the lands now or formerly constituting the beds and bottoms of all water bodies of every nature and description the title of which vests in the State of Louisiana, together with all islands arising therein and other lands formed by accretion or by reliction, where allowed by law, excepting tax adjudicated lands, and not presently under mineral lease on July 13, 2005, situated in Plaquemines Parish, Louisiana, and more particularly described as follows: Beginning at a point having Coordinates of X = 2,620,600.00 and Y = 337,080.00, said point being the Northwest corner of Block 21, Main Pass Area, Revised; Thence East 7,375.00 feet on and along the North line of said Block 21, Main Pass Area, Revised, to a point having Coordinates of X = 2,627,975.00 and Y = 337,080.00; Thence South 14,750.00 feet to a point having Coordinates of X = 2,627,975.00 and Y = 322,330.00, said point being on the South line of said Block 21, Main Pass Area, Revised; Thence West 7,375.00 feet on and along said south line of said Block 21, Main Pass Area, Revised, to a point having Coordinates of X = 2,620,600.00 and Y = 322,330.00, said point being the Southwest corner of said Block 21, Main Pass Area, Revised; Thence North 14,750.00 feet on and along the West line of said Block 21, Main Pass Area, Revised, to the point of beginning, containing approximately **2,497.27 acres**, all as more particularly outlined on a plat on file in the Office of Mineral Resources, Department of Natural Resources. All bearings, distances and coordinates are based on Louisiana Coordinate System of 1927, (North or South Zone), where applicable.

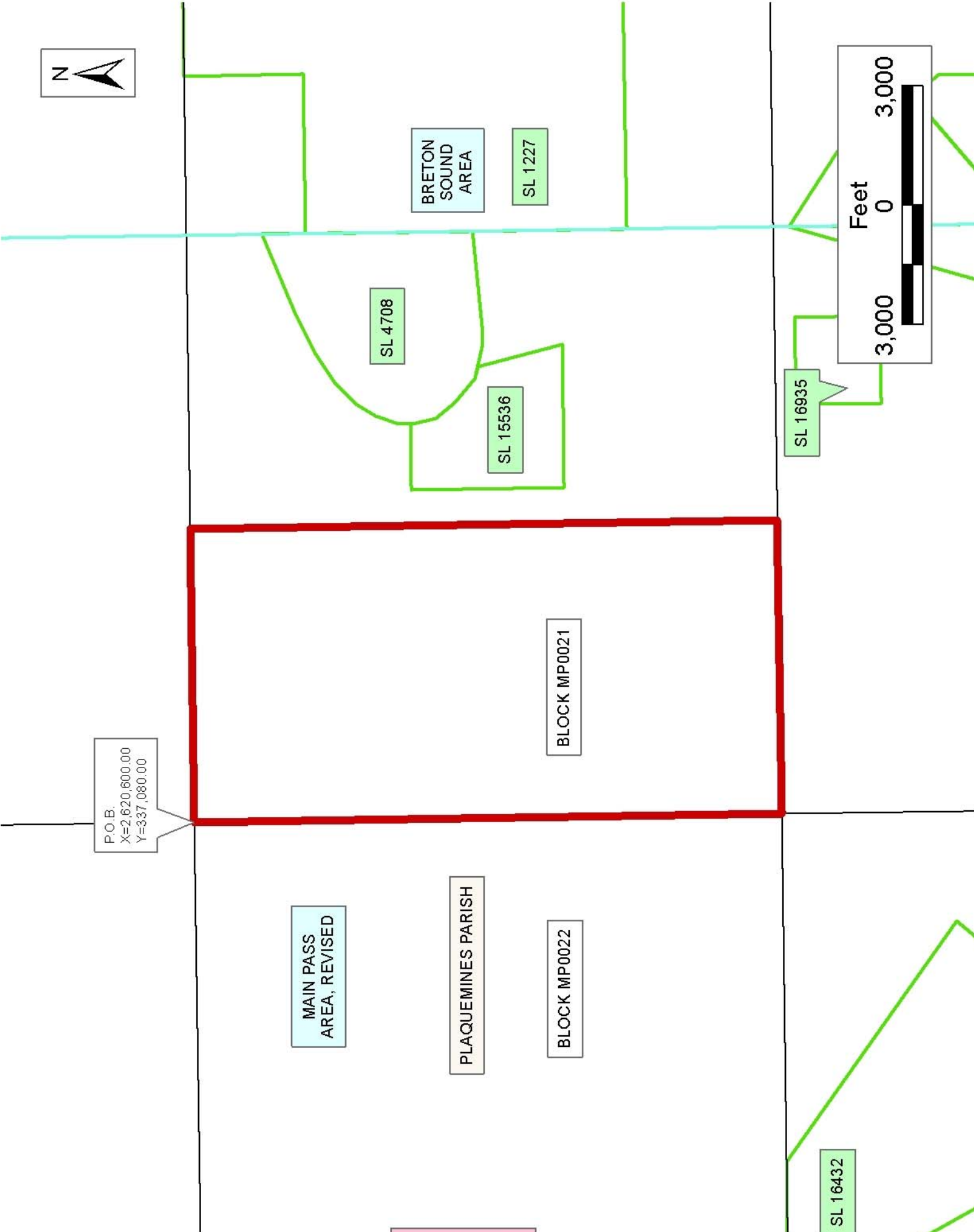
NOTE: The above description of the Tract nominated for lease has been provided and corrected, where required, exclusively by the nomination party. Any mineral lease selected from this Tract and awarded by the Louisiana State Mineral Board shall be without warranty of any kind, either express, implied, or statutory, including, but not limited to, the implied warranties of merchantability and fitness for a particular purpose. Should the mineral lease awarded by the Louisiana State Mineral Board be subsequently modified, cancelled or abrogated due to the existence of conflicting leases, operating agreements, private claims or other future obligations or conditions which may affect all or any portion of the leased Tract, it shall not relieve the Lessee of the obligation to pay any bonus due thereon to the Louisiana State Mineral Board, nor shall the Louisiana State Mineral Board be obligated to refund any consideration paid by the Lessor prior to such modification, cancellation, or abrogation, including, but not limited to, bonuses, rentals and royalties.

NOTE: The State of Louisiana does hereby reserve, and this lease shall be subject to, the imprescriptible right of surface use in the nature of a servitude in favor of the Department of Natural Resources, including its Offices and Commissions, for the sole purpose of implementing, constructing, servicing and maintaining approved coastal zone management and/or restoration projects. Utilization of any and all rights derived under this lease by the mineral lessee, its agents, successors or assigns,

shall not interfere with nor hinder the reasonable surface use by the Department of Natural Resources, its Offices or Commissions, as herein above reserved.

Applicant: ROBERT A. SCHROEDER, INC.

Bidder	Cash Payment	Price/Acre	Rental	Oil	Gas	Other



P.O.B.
X=2,620,600.00
Y=337,080.00

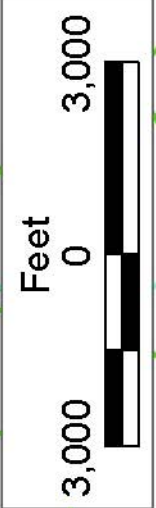
BRETON
SOUND
AREA

SL 1227

SL 4708

SL 15536

SL 16935



MAIN PASS
AREA,
REVISED

PLAQUEMINES PARISH

BLOCK MP0022

BLOCK MP0021

SL 16432

TRACT 37569 - Portion of Block 22, Main Pass Area, Revised, Plaquemines Parish, Louisiana

All of the lands now or formerly constituting the beds and bottoms of all water bodies of every nature and description the title of which vests in the State of Louisiana, together with all islands arising therein and other lands formed by accretion or by reliction, where allowed by law, excepting tax adjudicated lands, and not presently under mineral lease on July 13, 2005, situated in Plaquemines Parish, Louisiana, and more particularly described as follows: Beginning at a point having Coordinates of X = 2,620,600.00 and Y = 322,330.00, said point being the southeast corner of Block 22, Main Pass Area, Revised; Thence West 7,375.00 feet on and along the south line of said Block 22, Main Pass Area, Revised, to a point having Coordinates of X = 2,613,225.00 and Y = 322,330.00; Thence North 14,750.00 feet to a point having Coordinates of X = 2,613,225.00 and Y = 337,080.00, said point being on the north line of said Block 22, Main Pass Area, Revised; Thence East 7,375.00 feet on and along said north line of said Block 22, Main Pass Area, Revised, a point having Coordinates of X = 2,620,600.00 and Y = 337,080.00, said point being the northeast corner of said Block 22, Main Pass Area, Revised; Thence South 14,750.00 feet on and along the east line of said Block 22, Main Pass Area, Revised, to the point of beginning, containing approximately **2,497.27 acres**, all as more particularly outlined on a plat on file in the Office of Mineral Resources, Department of Natural Resources. All bearings, distances and coordinates are based on Louisiana Coordinate System of 1927, (North or South Zone), where applicable.

NOTE: The above description of the Tract nominated for lease has been provided and corrected, where required, exclusively by the nomination party. Any mineral lease selected from this Tract and awarded by the Louisiana State Mineral Board shall be without warranty of any kind, either express, implied, or statutory, including, but not limited to, the implied warranties of merchantability and fitness for a particular purpose. Should the mineral lease awarded by the Louisiana State Mineral Board be subsequently modified, cancelled or abrogated due to the existence of conflicting leases, operating agreements, private claims or other future obligations or conditions which may affect all or any portion of the leased Tract, it shall not relieve the Lessee of the obligation to pay any bonus due thereon to the Louisiana State Mineral Board, nor shall the Louisiana State Mineral Board be obligated to refund any consideration paid by the Lessor prior to such modification, cancellation, or abrogation, including, but not limited to, bonuses, rentals and royalties.

NOTE: The State of Louisiana does hereby reserve, and this lease shall be subject to, the imprescriptible right of surface use in the nature of a servitude in favor of the Department of Natural Resources, including its Offices and Commissions, for the sole purpose of implementing, constructing, servicing and maintaining approved coastal zone management and/or restoration projects. Utilization of any and all rights derived under this lease by the mineral lessee, its agents, successors or assigns,

shall not interfere with nor hinder the reasonable surface use by the Department of Natural Resources, its Offices or Commissions, as herein above reserved.

Applicant: ROBERT A. SCHROEDER, INC.

Bidder	Cash Payment	Price/Acre	Rental	Oil	Gas	Other



MAIN PASS AREA, REVISED

BLOCK MP0021

PLAQUEMINES PARISH

BLOCK MP0022

SL 4708

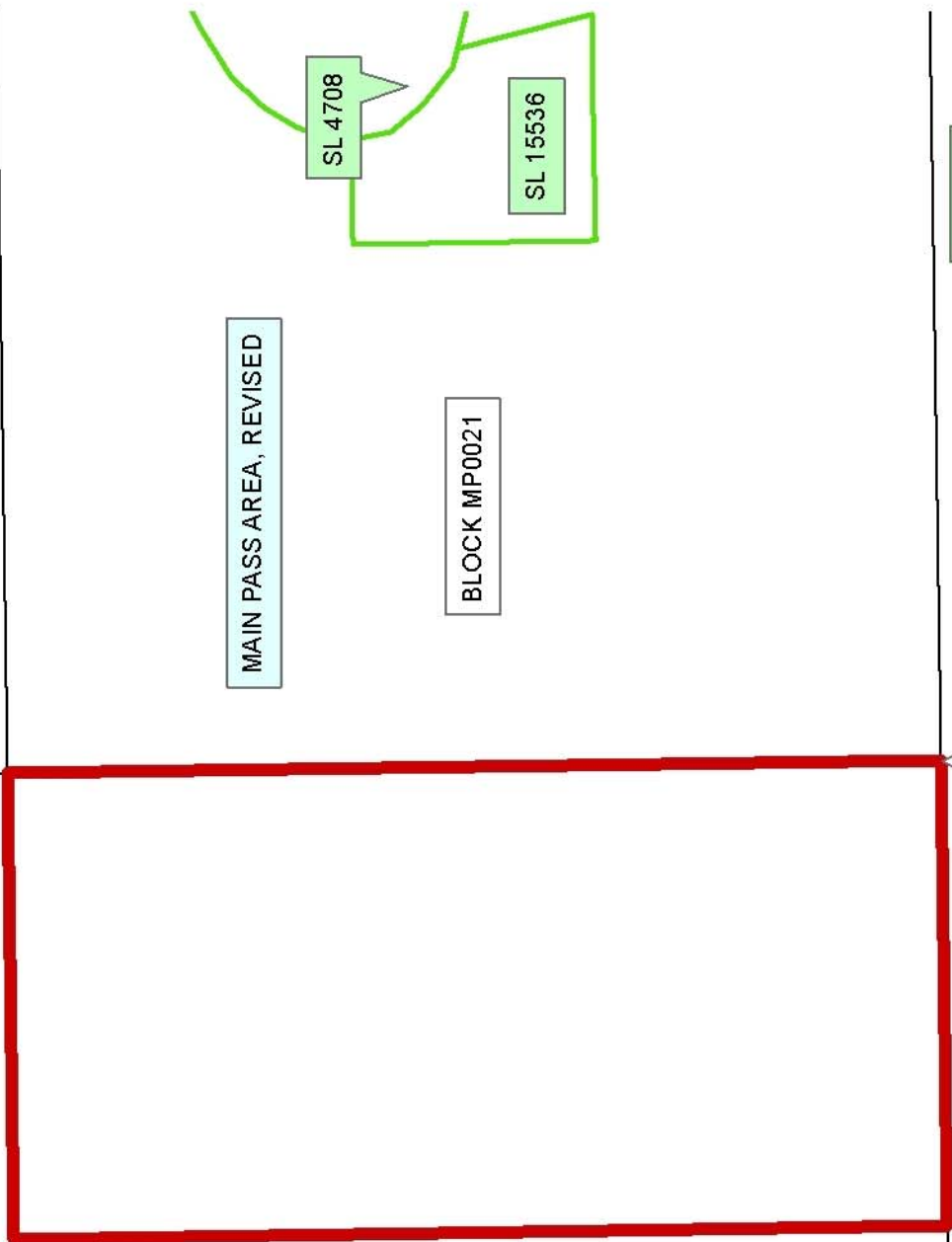
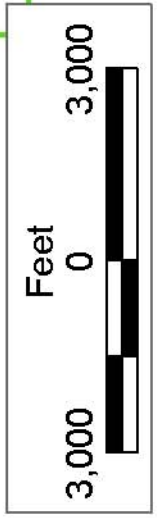
SL 15536

SL 16935

P.O.B.
X=2,620,600.00
Y=322,330.00

SL 16432

SL 18009



TRACT 37570 - Plaquemines Parish, Louisiana

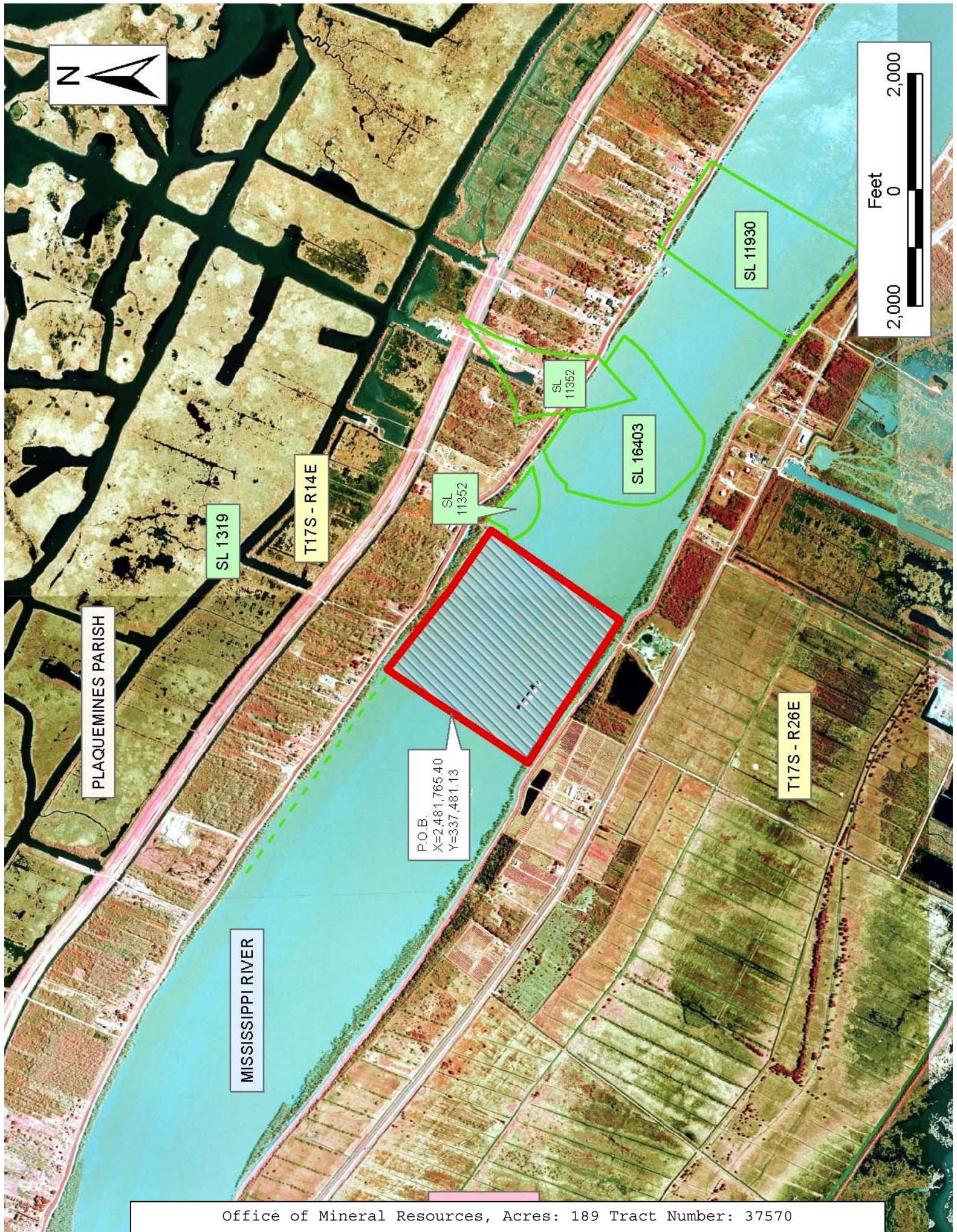
All of the lands now or formerly constituting the beds and bottoms of all water bodies of every nature and description the title of which vests in the State of Louisiana, together with all islands arising therein and other lands formed by accretion or by reliction, where allowed by law, excepting tax adjudicated lands, and not presently under mineral lease on July 13, 2005, situated in Plaquemines Parish, Louisiana, and more particularly described as follows: Beginning at a point having Coordinates of X = 2,481,765.40 and Y = 337,481.13; thence North 34 degrees 26 minutes 00 seconds East approximately 1451 feet to a point on the Southern boundary of State Lease No. 1319, as amended, also said to be the left descending bank of the Mississippi River; thence Southeasterly approximately 2984 feet along the Southern boundary of said State Lease No. 1319 to a point of intersection with a line bearing North 35 degrees 28 minutes 00 seconds East extended from a point having Coordinates of X = 2,484,166.80 and Y = 335,759.93; thence South 35 degrees 28 minutes 00 seconds West approximately 1357 feet along said line to said point having Coordinates of X = 2,484,166.80 and Y = 335,759.93; thence South 35 degrees 28 minutes 00 seconds West approximately 1357 feet to a point on the right descending bank of said Mississippi River; thence Northwesterly approximately 2930 feet along said descending bank to a point of intersection with a line bearing South 34 degrees 26 minutes 00 seconds West extended from a point having Coordinates of X = 2,481,765.40 and Y = 337,481.13; thence North 34 degrees 26 minutes 00 seconds East approximately 1451 feet along said line to said point of beginning, **LESS AND EXCEPT** that portion, if any, of the above described tract which may lie within State Lease No. 1319, as amended, containing approximately **189 acres**, all as more particularly outlined on a plat on file in the Office of Mineral Resources, Department of Natural Resources. All bearings, distances and coordinates are based on Louisiana Coordinate System of 1927, (North or South Zone), where applicable.

NOTE: The above description of the Tract nominated for lease has been provided and corrected, where required, exclusively by the nomination party. Any mineral lease selected from this Tract and awarded by the Louisiana State Mineral Board shall be without warranty of any kind, either express, implied, or statutory, including, but not limited to, the implied warranties of merchantability and fitness for a particular purpose. Should the mineral lease awarded by the Louisiana State Mineral Board be subsequently modified, cancelled or abrogated due to the existence of conflicting leases, operating agreements, private claims or other future obligations or conditions which may affect all or any portion of the leased Tract, it shall not relieve the Lessee of the obligation to pay any bonus due thereon to the Louisiana State Mineral Board, nor shall the Louisiana State Mineral Board be obligated to refund any consideration paid by the Lessor prior to such modification, cancellation, or abrogation, including, but not limited to, bonuses, rentals and royalties.

NOTE: The State of Louisiana does hereby reserve, and this lease shall be subject to, the imprescriptible right of surface use in the nature of a servitude in favor of the Department of Natural Resources, including its Offices and Commissions, for the sole purpose of implementing, constructing, servicing and maintaining approved coastal zone management and/or restoration projects. Utilization of any and all rights derived under this lease by the mineral lessee, its agents, successors or assigns, shall not interfere with nor hinder the reasonable surface use by the Department of Natural Resources, its Offices or Commissions, as herein above reserved.

Applicant: ROBERT D. FAIN

Bidder	Cash Payment	Price/Acre	Rental	Oil	Gas	Other



PLAQUEMINES PARISH

MISSISSIPPI RIVER

SL 1319

T17S - R14E

SL 11352

SL 11352

SL 16403

SL 11930

T17S - R26E

P.O.B.
X=2,481,765.40
Y=337,481.13