

**TRACT 37551 - Cameron Parish, Louisiana**

All of the lands now or formerly constituting the beds and bottoms of all water bodies of every nature and description the title of which vests in the State of Louisiana, together with all islands arising therein and other lands formed by accretion or by reliction, where allowed by law, excepting tax adjudicated lands, and not presently under mineral lease on July 13, 2005, situated in Cameron Parish, Louisiana, and more particularly described as follows: Beginning at a point on the Texas Louisiana Boundary having Coordinates of X = 1,199,801.04 and Y = 389,076.19; thence East 10,928.27 feet to a point on the Northern boundary of State Lease No. 18217 having Coordinates of X = 1,210,729.31 and Y = 389,076.19; thence along the said State Lease No. 18217 the following courses: South 57 degrees 37 minutes 22 seconds West 5,036.60 feet to a point having Coordinates of X = 1,206,475.69 and Y = 386,379.13 and South 4,365.70 feet to its Southwest corner, said corner also being a point on the Coastline as per the Supreme Court Decree dated June 16, 1975, having Coordinates of X = 1,206,475.69 and Y = 382,013.43; thence along the said Coastline the following courses: Southwesterly in a straight line to a point having Coordinates of X = 1,206,440.00 and Y = 381,985.00; Southwesterly in a straight line to a point having Coordinates of X = 1,205,843.00 and Y = 381,750.00 and Southwesterly in a straight line to a point on the said Texas Louisiana Boundary having Coordinates of X = 1,205,205.04 and Y = 379,935.04; thence along the boundary of said Texas Louisiana Boundary the following courses: North 35 degrees 39 minutes 23 seconds West 5,304.38 feet to a point having Coordinates of X = 1,202,113.00 and Y = 384,245.00; North 16 degrees 22 minutes 12 seconds West 1,483.12 feet to a point having Coordinates of X = 1,201,695.00 and Y = 385,668.00; North 23 degrees 23 minutes 28 seconds West 743.07 feet to a point having Coordinates of X = 1,201,400.00 and Y = 386,350.00; North 34 degrees 12 minutes 57 seconds West 906.97 feet to a point having Coordinates of X = 1,200,890.00 and Y = 387,100.00; North 22 degrees 49 minutes 23 seconds West 1,301.93 feet to a point having Coordinates of X = 1,200,385.00 and Y = 388,300.00 and North 36 degrees 57 minutes 22 seconds West 971.33 feet to the point of beginning, containing approximately **401 acres, LESS AND EXCEPT** that portion thereof, if any, located West of the boundary line between the States of Texas and Louisiana as determined by the report of the Special Master and adjudicated by the Supreme Court of the United States in litigation styled **Texas v. Louisiana, et al No. 36 Original**, or as otherwise approved by said court, all as more particularly outlined on a plat on file in the Office of Mineral Resources, Department of Natural Resources. All bearings, distances and coordinates are based on Louisiana Coordinate System of 1927, (North or South Zone), where applicable.

NOTE: The above description of the Tract nominated for lease has been provided and corrected, where required, exclusively by the nomination party. Any mineral lease selected from this Tract and awarded by the Louisiana State Mineral Board shall be without warranty of any kind, either express, implied, or statutory, including, but not limited to, the

implied warranties of merchantability and fitness for a particular purpose. Should the mineral lease awarded by the Louisiana State Mineral Board be subsequently modified, cancelled or abrogated due to the existence of conflicting leases, operating agreements, private claims or other future obligations or conditions which may affect all or any portion of the leased Tract, it shall not relieve the Lessee of the obligation to pay any bonus due thereon to the Louisiana State Mineral Board, nor shall the Louisiana State Mineral Board be obligated to refund any consideration paid by the Lessor prior to such modification, cancellation, or abrogation, including, but not limited to, bonuses, rentals and royalties.

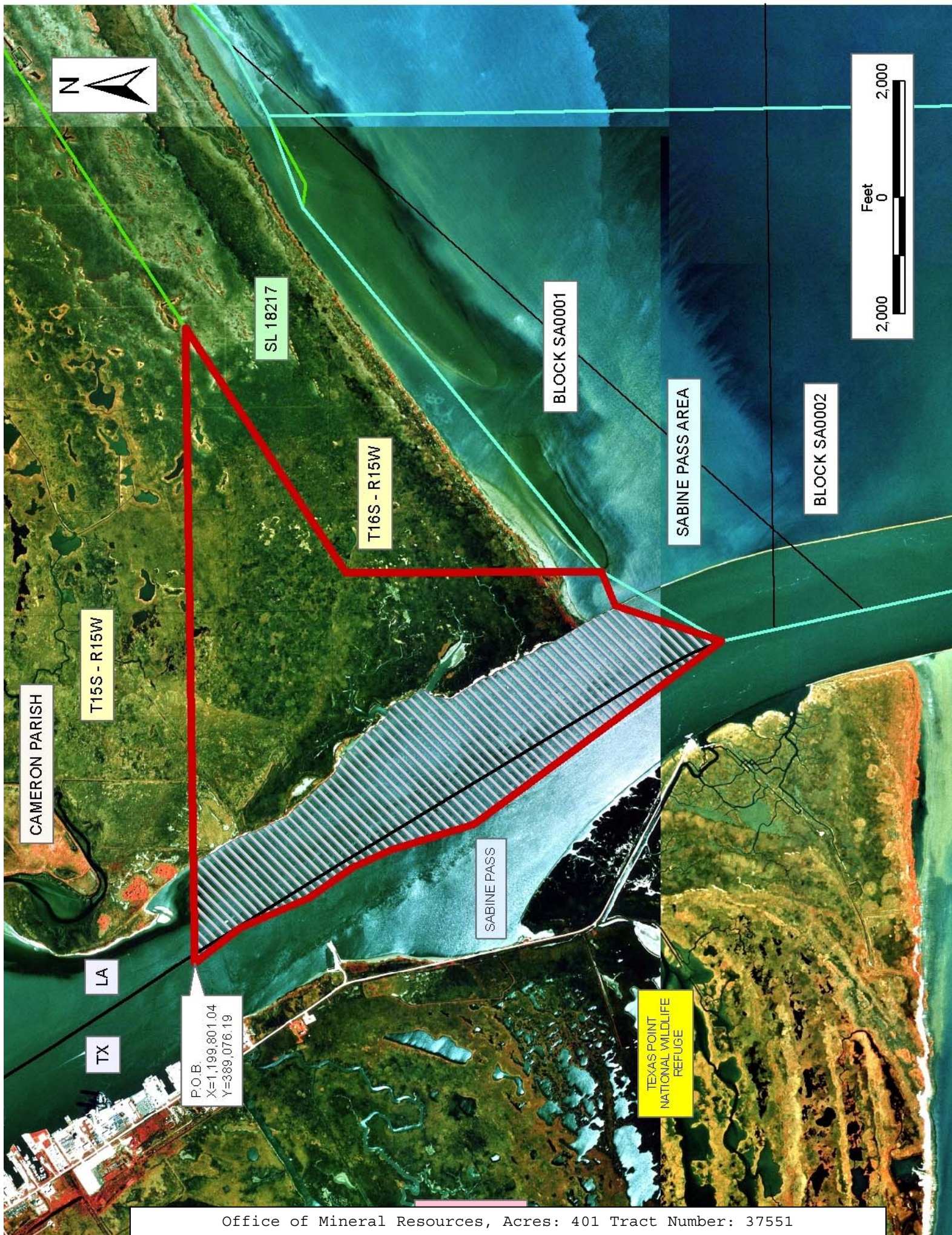
NOTE: The State of Louisiana does hereby reserve, and this lease shall be subject to, the imprescriptible right of surface use in the nature of a servitude in favor of the Department of Natural Resources, including its Offices and Commissions, for the sole purpose of implementing, constructing, servicing and maintaining approved coastal zone management and/or restoration projects. Utilization of any and all rights derived under this lease by the mineral lessee, its agents, successors or assigns, shall not interfere with nor hinder the reasonable surface use by the Department of Natural Resources, its Offices or Commissions, as herein above reserved.

NOTE: It appears, according to our records, that a portion of this Tract is located within the restrictive safety fairway area as set out by the Corps of Engineers, U.S. Army and/or the restrictive anchorage area as set out by the U.S. Coast Guard.

Applicant: FLEETWOOD RESOURCES, INC.

Bidder	Cash Payment	Price/ Acre	Rental	Oil	Gas	Other







**TRACT 37552 - Jefferson and Lafourche Parishes, Louisiana**

All of the lands now or formerly constituting the beds and bottoms of all water bodies of every nature and description the title of which vests in the State of Louisiana, together with all islands arising therein and other lands formed by accretion or by reliction, where allowed by law, excepting tax adjudicated lands, and not presently under mineral lease on July 13, 2005, situated in Jefferson and Lafourche Parishes, Louisiana, and more particularly described as follows: Beginning at a point on the West Boundary of State Lease No. 18511 having Coordinates of X = 2,372,729.00 and Y = 365,485.48; Thence South 888.48 feet along the West Boundary of said State Lease No. 18511 to its Southwest Corner, also being the Northwest Corner of State Lease No. 18513 having Coordinates of X = 2,372,729.00 and Y = 364,597.00; Thence South 4,997.00 feet along the West Boundary of said State Lease No. 18513 to its Southwest Corner having Coordinates of X = 2,372,729.00 and Y = 359,600.00; Thence East 2,245.40 feet along the Boundary of said State Lease No. 18513 to a point having Coordinates of X = 2,374,974.40 and Y = 359,600.00; Thence South 00 degrees 28 minutes 48 seconds East 7,828.27 feet to a point having Coordinates of X = 2,375,040.00 and Y = 351,772.00; Thence West 2,311.00 feet to the Southeast Corner of State Lease No. 18076 having Coordinates of X = 2,372,729.00 and Y = 351,772.00; Thence North 2,344.00 feet along the East Boundary of said State Lease No. 18076 to its Northeast Corner having Coordinates of X = 2,372,729.00 and Y = 354,116.00; Thence West 3,159.00 feet along the North Boundary of said State Lease No. 18076 to its Northwest Corner having Coordinates of X = 2,369,570.00 and Y = 354,116.00; Thence South 2,344.00 feet along the West Boundary of said State Lease No. 18076 to its Southwest Corner having Coordinates of X = 2,369,570.00 and Y = 351,772.00; Thence West 3,354.00 feet to a point having Coordinates of X = 2,366,216.00 and Y = 351,772.00; Thence North 02 degrees 12 minutes 10 seconds West 9,157.77 feet to a point having Coordinates of X = 2,365,864.00 and Y = 360,923.00; Thence North 86 degrees 01 minutes 59 seconds East 2,269.44 feet to a point having Coordinates of X = 2,368,128.00 and Y = 361,080.00; Thence North 01 degrees 02 minutes 43 seconds East 2,302.38 feet to a point having Coordinates of X = 2,368,170.00 and Y = 363,382.00; Thence South 89 degrees 01 minutes 16 seconds East 2,224.32 feet to a point having Coordinates of X = 2,370,394.00 and Y = 363,344.00; Thence North 00 degrees 40 minutes 18 seconds West 6,908.47 feet to a point having Coordinates of X = 2,370,313.00 and Y = 370,252.00; Thence South 26 degrees 52 minutes 44 seconds East 5,343.85 feet to the point of beginning containing approximately **1,861 acres**, all as more particularly outlined on a plat on file in the Office of Mineral Resources, Department of Natural Resources. All bearings, distances and coordinates are based on Louisiana Coordinate System of 1927, (North or South Zone), where applicable.

NOTE: The above description of the Tract nominated for lease has been provided and corrected, where required, exclusively by the nomination party. Any mineral lease selected from this Tract and awarded by the Louisiana State Mineral Board shall be without warranty of any kind,

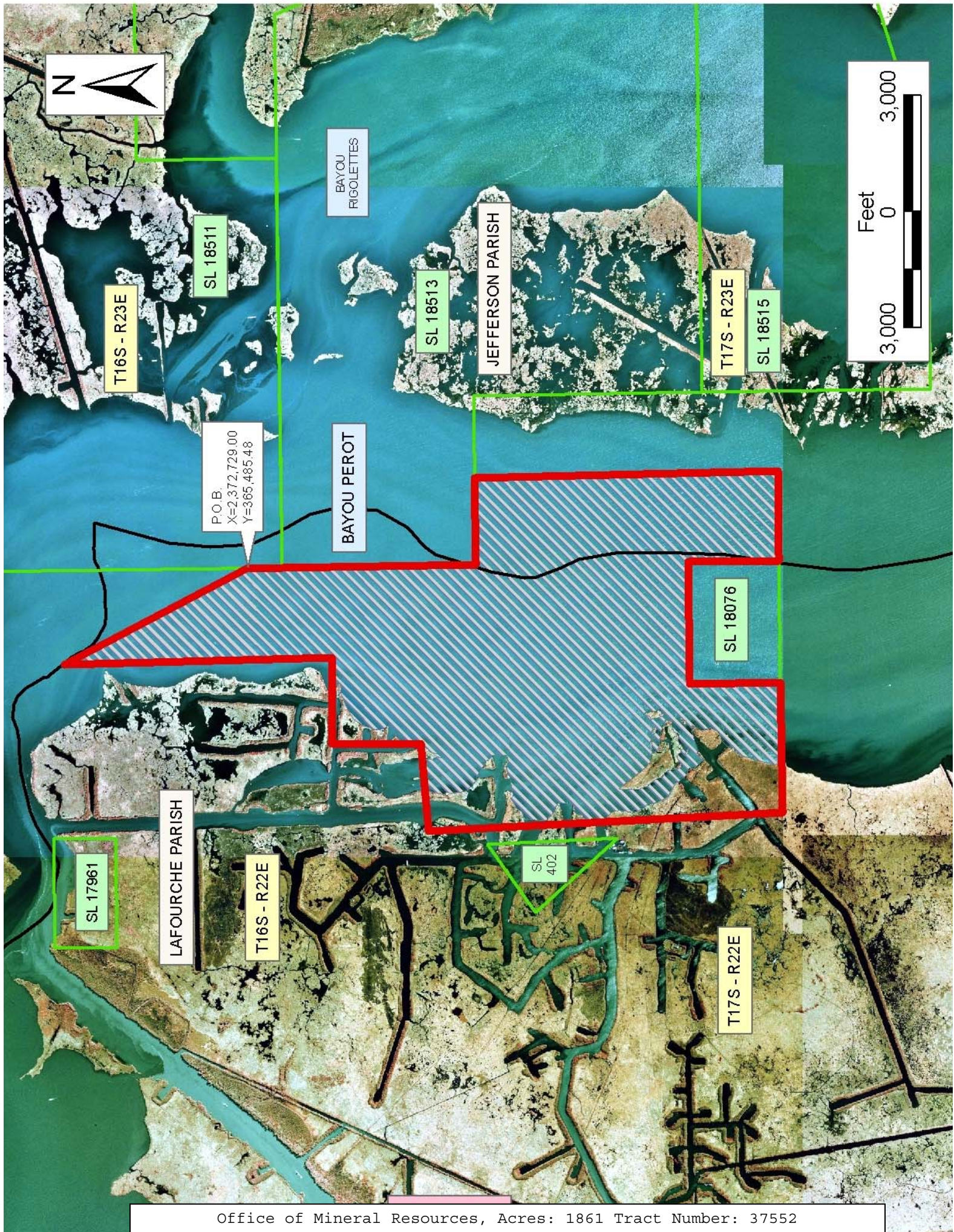
either express, implied, or statutory, including, but not limited to, the implied warranties of merchantability and fitness for a particular purpose. Should the mineral lease awarded by the Louisiana State Mineral Board be subsequently modified, cancelled or abrogated due to the existence of conflicting leases, operating agreements, private claims or other future obligations or conditions which may affect all or any portion of the leased Tract, it shall not relieve the Lessee of the obligation to pay any bonus due thereon to the Louisiana State Mineral Board, nor shall the Louisiana State Mineral Board be obligated to refund any consideration paid by the Lessor prior to such modification, cancellation, or abrogation, including, but not limited to, bonuses, rentals and royalties.

NOTE: The State of Louisiana does hereby reserve, and this lease shall be subject to, the imprescriptible right of surface use in the nature of a servitude in favor of the Department of Natural Resources, including its Offices and Commissions, for the sole purpose of implementing, constructing, servicing and maintaining approved coastal zone management and/or restoration projects. Utilization of any and all rights derived under this lease by the mineral lessee, its agents, successors or assigns, shall not interfere with nor hinder the reasonable surface use by the Department of Natural Resources, its Offices or Commissions, as herein above reserved.

Applicant: STARKS OIL CORPORATION

Bidder	Cash Payment	Price/ Acre	Rental	Oil	Gas	Other







**TRACT 37553 - Plaquemines Parish, Louisiana**

All of the lands now or formerly constituting the beds and bottoms of all water bodies of every nature and description the title of which vests in the State of Louisiana, together with all islands arising therein and other lands formed by accretion or by reliction, where allowed by law, excepting tax adjudicated lands, and not presently under mineral lease on July 13, 2005, situated in Plaquemines Parish, Louisiana, and more particularly described as follows: Beginning at a point having Coordinates of X = 2,537,863.00 and Y = 358,328.00; thence North 5,280.00 feet to a point having Coordinates of X = 2,537,863.00 and Y = 363,608.00; thence East approximately 7,356 feet to a point on the West Boundary of State Lease No. 195, as amended, having a Coordinate of Y = 363,608.00; thence along the Boundary of said State Lease No. 195 in a Southeasterly, Easterly, Southerly, Westerly and Southwesterly direction to a point having a Coordinate of Y = 358,328.00; thence West approximately 6,933 feet to the point of beginning, **LESS AND EXCEPT** any portion of the above described tract which may lie within State Lease No. 195, containing approximately **742 acres**, all as more particularly outlined on a plat on file in the Office of Mineral Resources, Department of Natural Resources. All bearings, distances and coordinates are based on Louisiana Coordinate System of 1927, (North or South Zone), where applicable.

NOTE: The above description of the Tract nominated for lease has been provided and corrected, where required, exclusively by the nomination party. Any mineral lease selected from this Tract and awarded by the Louisiana State Mineral Board shall be without warranty of any kind, either express, implied, or statutory, including, but not limited to, the implied warranties of merchantability and fitness for a particular purpose. Should the mineral lease awarded by the Louisiana State Mineral Board be subsequently modified, cancelled or abrogated due to the existence of conflicting leases, operating agreements, private claims or other future obligations or conditions which may affect all or any portion of the leased Tract, it shall not relieve the Lessee of the obligation to pay any bonus due thereon to the Louisiana State Mineral Board, nor shall the Louisiana State Mineral Board be obligated to refund any consideration paid by the Lessor prior to such modification, cancellation, or abrogation, including, but not limited to, bonuses, rentals and royalties.

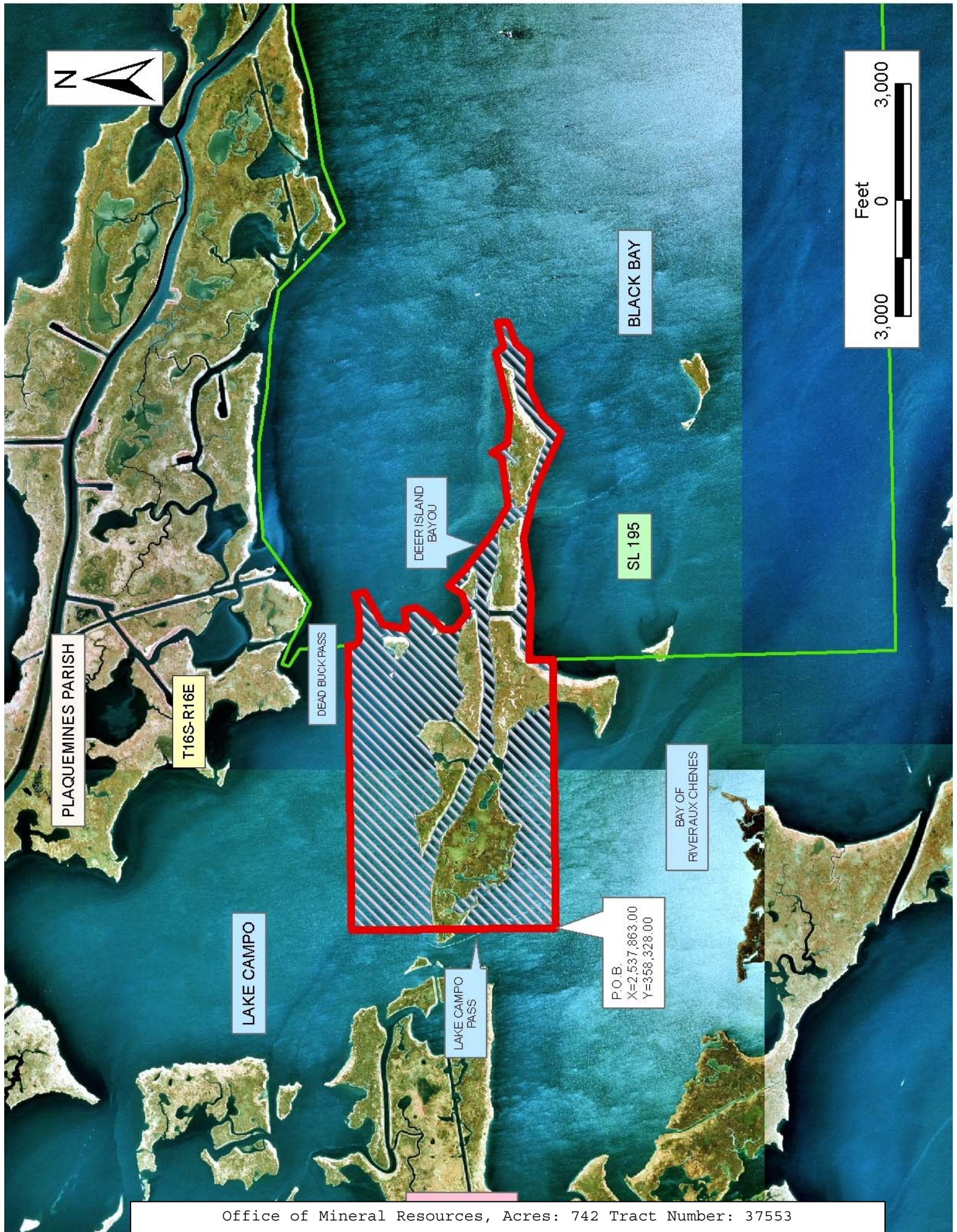
NOTE: The State of Louisiana does hereby reserve, and this lease shall be subject to, the imprescriptible right of surface use in the nature of a servitude in favor of the Department of Natural Resources, including its Offices and Commissions, for the sole purpose of implementing, constructing, servicing and maintaining approved coastal zone management and/or restoration projects. Utilization of any and all rights derived under this lease by the mineral lessee, its agents, successors or assigns, shall not interfere with nor hinder the reasonable surface use by the Department of Natural Resources, its Offices or Commissions, as herein above reserved.

NOTE: The Department of Wildlife and Fisheries has designated certain areas in the coastal waters of the State of Louisiana as Oyster Seed Bed Areas. The exact location of those Seed Bed Areas must be obtained from the Department of Wildlife and Fisheries and any work done under a mineral lease from the State of Louisiana may necessarily be conducted in conformity with the rules and regulations promulgated by the said Department of Wildlife and Fisheries for Oyster Seed Bed Areas.

Applicant: MINERAL SERVICES, INC.

Bidder	Cash Payment	Price/ Acre	Rental	Oil	Gas	Other







**TRACT 37554 - Plaquemines Parish, Louisiana**

All of the lands now or formerly constituting the beds and bottoms of all water bodies of every nature and description the title of which vests in the State of Louisiana, together with all islands arising therein and other lands formed by accretion or by reliction, where allowed by law, excepting tax adjudicated lands, and not presently under mineral lease on July 13, 2005, situated in Plaquemines Parish, Louisiana, and more particularly described as follows: Beginning at a point on the West Boundary of State Lease No. 195, as amended, having Coordinates of X = 2,544,795.93 and Y = 358,328.00; thence South 00 degrees 39 minutes 03 seconds East 8,857.50 feet along the West Boundary of said State Lease No. 195 to its Southwest Corner, as amended, to a point having Coordinates of X = 2,544,896.56 and Y = 349,471.07; thence West 603.11 feet to a point having Coordinates of X = 2,544,293.45 and Y = 349,471.07; thence North 54 degrees 27 minutes 00 seconds West 2,870.48 feet to a point having Coordinates of X = 2,541,958.00 and Y = 351,140.00; thence South 40 degrees 40 minutes 06 seconds West 3,332.92 feet to a point having Coordinates of X = 2,539,786.00 and Y = 348,612.00; thence North 46 degrees 56 minutes 24 seconds West 2,631.95 feet to a point having Coordinates of X = 2,537,863.00 and Y = 350,409.00; thence North 7,919 feet to a point having Coordinates of X = 2,537,863.00 and Y = 358,328.00; thence East 6,932.93 feet to the point of beginning containing approximately **1,099 acres**, all as more particularly outlined on a plat on file in the Office of Mineral Resources, Department of Natural Resources. All bearings, distances and coordinates are based on Louisiana Coordinate System of 1927, (North or South Zone), where applicable.

NOTE: The above description of the Tract nominated for lease has been provided and corrected, where required, exclusively by the nomination party. Any mineral lease selected from this Tract and awarded by the Louisiana State Mineral Board shall be without warranty of any kind, either express, implied, or statutory, including, but not limited to, the implied warranties of merchantability and fitness for a particular purpose. Should the mineral lease awarded by the Louisiana State Mineral Board be subsequently modified, cancelled or abrogated due to the existence of conflicting leases, operating agreements, private claims or other future obligations or conditions which may affect all or any portion of the leased Tract, it shall not relieve the Lessee of the obligation to pay any bonus due thereon to the Louisiana State Mineral Board, nor shall the Louisiana State Mineral Board be obligated to refund any consideration paid by the Lessor prior to such modification, cancellation, or abrogation, including, but not limited to, bonuses, rentals and royalties.

NOTE: The State of Louisiana does hereby reserve, and this lease shall be subject to, the imprescriptible right of surface use in the nature of a servitude in favor of the Department of Natural Resources, including its Offices and Commissions, for the sole purpose of implementing, constructing, servicing and maintaining approved coastal zone management and/or restoration projects. Utilization of any and all rights derived



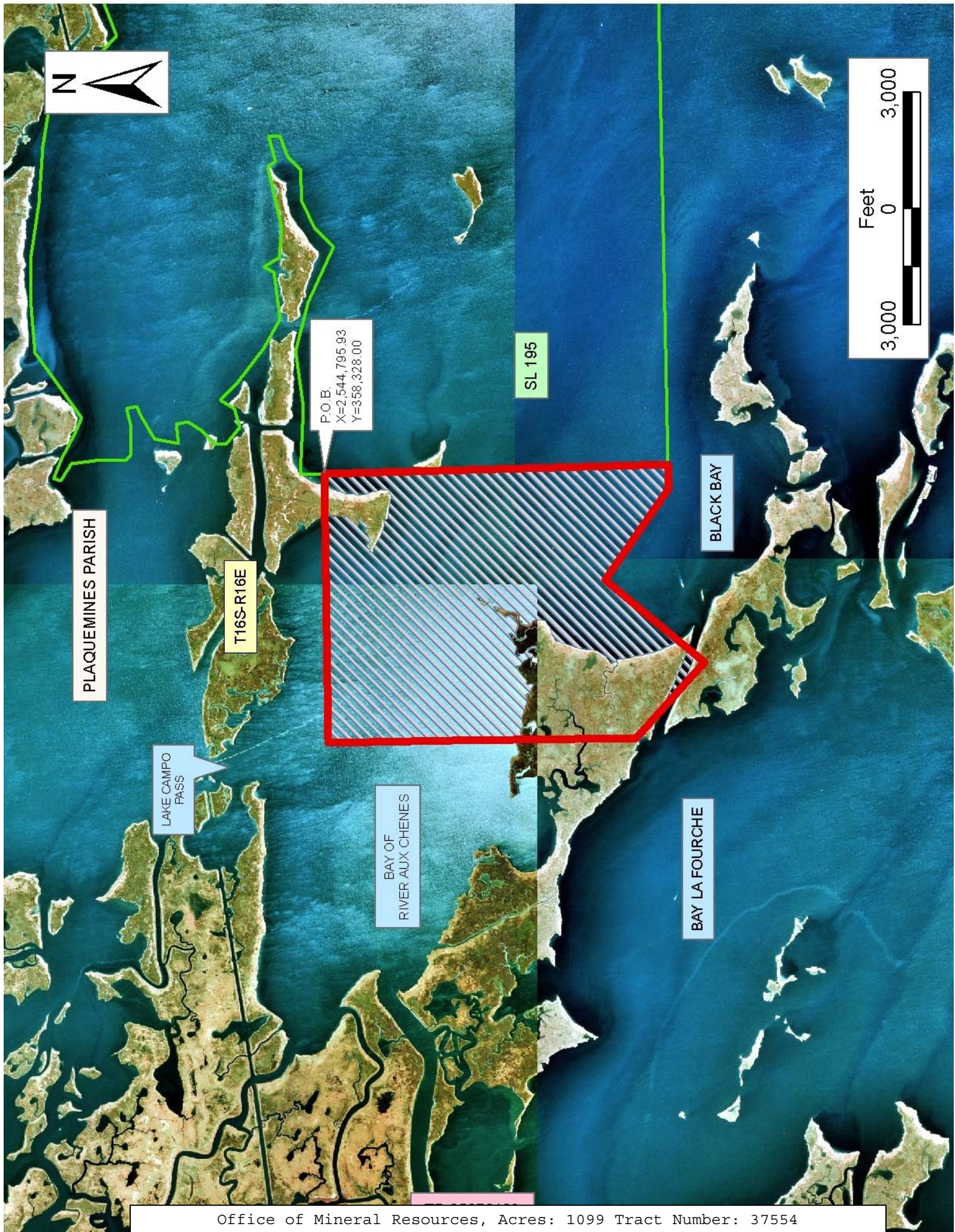
under this lease by the mineral lessee, its agents, successors or assigns, shall not interfere with nor hinder the reasonable surface use by the Department of Natural Resources, its Offices or Commissions, as herein above reserved.

NOTE: The Department of Wildlife and Fisheries has designated certain areas in the coastal waters of the State of Louisiana as Oyster Seed Bed Areas. The exact location of those Seed Bed Areas must be obtained from the Department of Wildlife and Fisheries and any work done under a mineral lease from the State of Louisiana may necessarily be conducted in conformity with the rules and regulations promulgated by the said Department of Wildlife and Fisheries for Oyster Seed Bed Areas.

Applicant: MINERAL SERVICES, INC.

Bidder	Cash Payment	Price/ Acre	Rental	Oil	Gas	Other







**TRACT 37555 - Plaquemines Parish, Louisiana**

All of the lands now or formerly constituting the beds and bottoms of all water bodies of every nature and description the title of which vests in the State of Louisiana, together with all islands arising therein and other lands formed by accretion or by reliction, where allowed by law, excepting tax adjudicated lands, and not presently under mineral lease on July 13, 2005, situated in Plaquemines Parish, Louisiana, and more particularly described as follows: Beginning at a point having Coordinates of X = 2,537,863.00 and Y = 358,328.00; thence South 3,171.00 feet to a point having Coordinates of X = 2,537,863.00 and Y = 355,157.00; thence South 55 degrees 01 minutes 07 seconds West 17,022.25 feet to a point having Coordinates of X = 2,523,916.00 and Y = 345,398.00; thence North 4,586.00 feet to a point having Coordinates of X = 2,523,916.00 and Y = 349,984.00; thence North 59 degrees 06 minutes 34 seconds East 16,252.42 feet to the point of beginning containing approximately **925 acres**, all as more particularly outlined on a plat on file in the Office of Mineral Resources, Department of Natural Resources. All bearings, distances and coordinates are based on Louisiana Coordinate System of 1927, (North or South Zone), where applicable.

NOTE: The above description of the Tract nominated for lease has been provided and corrected, where required, exclusively by the nomination party. Any mineral lease selected from this Tract and awarded by the Louisiana State Mineral Board shall be without warranty of any kind, either express, implied, or statutory, including, but not limited to, the implied warranties of merchantability and fitness for a particular purpose. Should the mineral lease awarded by the Louisiana State Mineral Board be subsequently modified, cancelled or abrogated due to the existence of conflicting leases, operating agreements, private claims or other future obligations or conditions which may affect all or any portion of the leased Tract, it shall not relieve the Lessee of the obligation to pay any bonus due thereon to the Louisiana State Mineral Board, nor shall the Louisiana State Mineral Board be obligated to refund any consideration paid by the Lessor prior to such modification, cancellation, or abrogation, including, but not limited to, bonuses, rentals and royalties.

NOTE: The State of Louisiana does hereby reserve, and this lease shall be subject to, the imprescriptible right of surface use in the nature of a servitude in favor of the Department of Natural Resources, including its Offices and Commissions, for the sole purpose of implementing, constructing, servicing and maintaining approved coastal zone management and/or restoration projects. Utilization of any and all rights derived under this lease by the mineral lessee, its agents, successors or assigns, shall not interfere with nor hinder the reasonable surface use by the Department of Natural Resources, its Offices or Commissions, as herein above reserved.

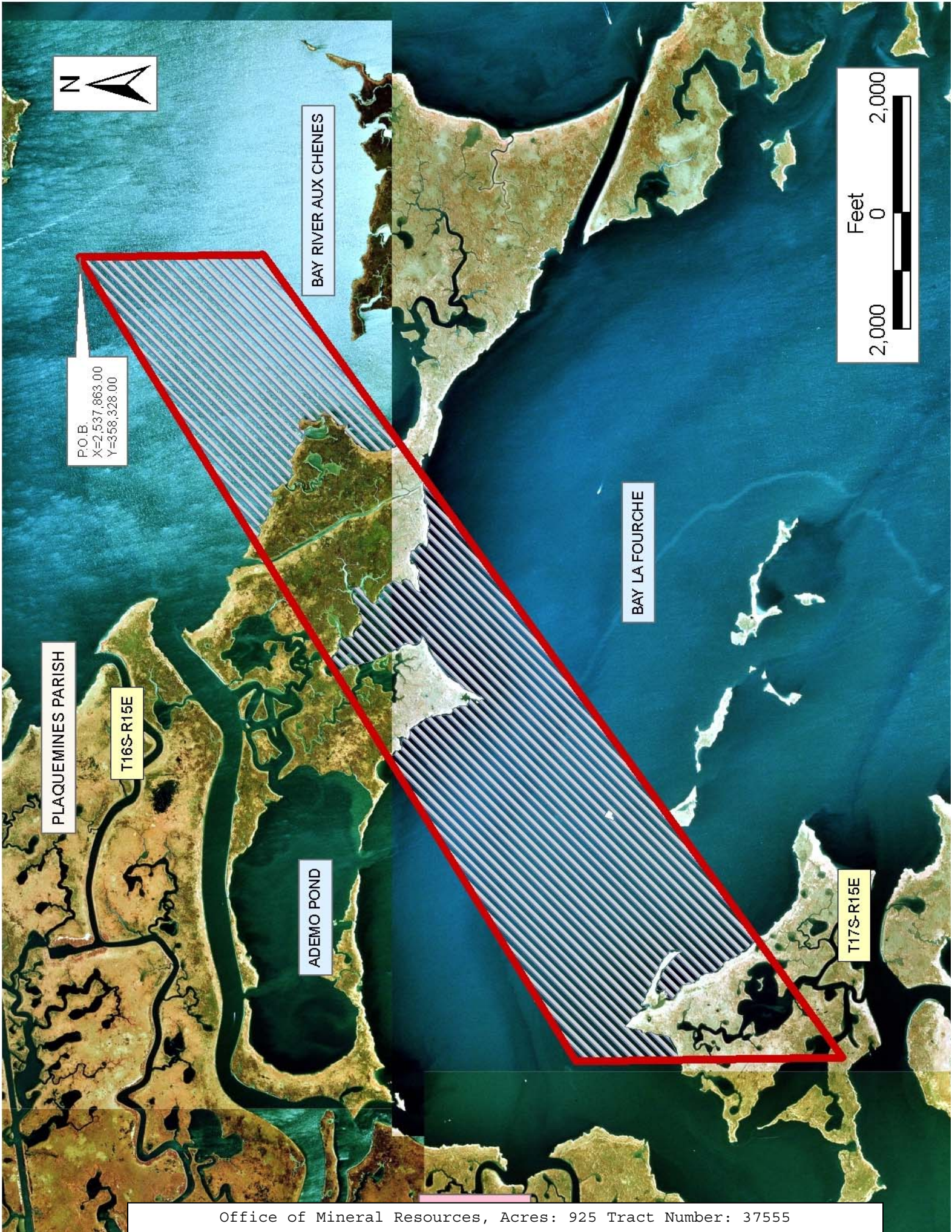
NOTE: The Department of Wildlife and Fisheries has designated certain areas in the coastal waters of the State of Louisiana as Oyster Seed Bed

Areas. The exact location of those Seed Bed Areas must be obtained from the Department of Wildlife and Fisheries and any work done under a mineral lease from the State of Louisiana may necessarily be conducted in conformity with the rules and regulations promulgated by the said Department of Wildlife and Fisheries for Oyster Seed Bed Areas.

Applicant: MINERAL SERVICES, INC.

Bidder	Cash Payment	Price/ Acre	Rental	Oil	Gas	Other







**TRACT 37556 - Plaquemines Parish, Louisiana**

All of the lands now or formerly constituting the beds and bottoms of all water bodies of every nature and description the title of which vests in the State of Louisiana, together with all islands arising therein and other lands formed by accretion or by reliction, where allowed by law, excepting tax adjudicated lands, and not presently under mineral lease on July 13, 2005, situated in Plaquemines Parish, Louisiana, and more particularly described as follows: Beginning at a point having Coordinates of X = 2,537,863.00 and Y = 355,157.00; thence South 4,748.00 feet to a point having Coordinates of X = 2,537,863.00 and Y = 350,409.00; thence South 48 degrees 27 minutes 59 seconds West 11,285.57 feet to a point having Coordinates of X = 2,529,415.00 and Y = 342,926.00; thence South 88 degrees 00 minutes 01 seconds West 5,502.35 feet to a point having Coordinates of X = 2,523,916.00 and Y = 342,734.00; thence North 2,664.00 feet to a point having Coordinates of X = 2,523,916.00 and Y = 345,398.00; thence North 55 degrees 01 minutes 07 seconds East 17,022.25 feet to the point of beginning containing approximately **1,339 acres**, all as more particularly outlined on a plat on file in the Office of Mineral Resources, Department of Natural Resources. All bearings, distances and coordinates are based on Louisiana Coordinate System of 1927, (North or South Zone), where applicable.

NOTE: The above description of the Tract nominated for lease has been provided and corrected, where required, exclusively by the nomination party. Any mineral lease selected from this Tract and awarded by the Louisiana State Mineral Board shall be without warranty of any kind, either express, implied, or statutory, including, but not limited to, the implied warranties of merchantability and fitness for a particular purpose. Should the mineral lease awarded by the Louisiana State Mineral Board be subsequently modified, cancelled or abrogated due to the existence of conflicting leases, operating agreements, private claims or other future obligations or conditions which may affect all or any portion of the leased Tract, it shall not relieve the Lessee of the obligation to pay any bonus due thereon to the Louisiana State Mineral Board, nor shall the Louisiana State Mineral Board be obligated to refund any consideration paid by the Lessor prior to such modification, cancellation, or abrogation, including, but not limited to, bonuses, rentals and royalties.

NOTE: The State of Louisiana does hereby reserve, and this lease shall be subject to, the imprescriptible right of surface use in the nature of a servitude in favor of the Department of Natural Resources, including its Offices and Commissions, for the sole purpose of implementing, constructing, servicing and maintaining approved coastal zone management and/or restoration projects. Utilization of any and all rights derived under this lease by the mineral lessee, its agents, successors or assigns, shall not interfere with nor hinder the reasonable surface use by the Department of Natural Resources, its Offices or Commissions, as herein above reserved.

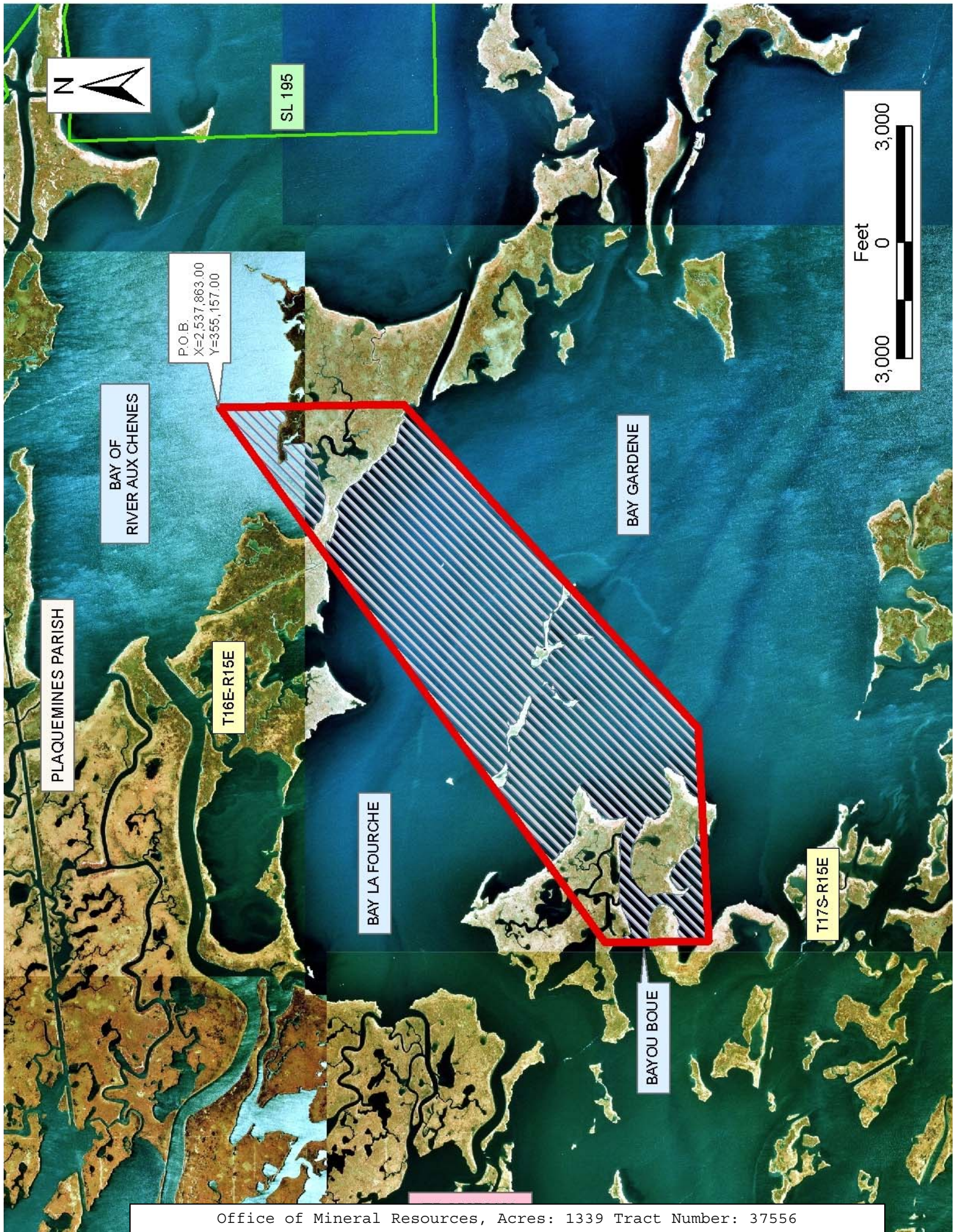


NOTE: The Department of Wildlife and Fisheries has designated certain areas in the coastal waters of the State of Louisiana as Oyster Seed Bed Areas. The exact location of those Seed Bed Areas must be obtained from the Department of Wildlife and Fisheries and any work done under a mineral lease from the State of Louisiana may necessarily be conducted in conformity with the rules and regulations promulgated by the said Department of Wildlife and Fisheries for Oyster Seed Bed Areas.

Applicant: MINERAL SERVICES, INC.

Bidder	Cash Payment	Price/ Acre	Rental	Oil	Gas	Other





SL 195

Feet  
3,000 0 3,000

P.O.B.  
X=2,537,863.00  
Y=355,157.00

BAY OF  
RIVER AUX CHENES

BAY GARDENE

PLAQUEMINES PARISH

T16E-R15E

BAY LA FOURCHE

T17S-R15E

BAYOU BOUE



**TRACT 37557 - Plaquemines Parish, Louisiana**

All of the lands now or formerly constituting the beds and bottoms of all water bodies of every nature and description the title of which vests in the State of Louisiana, together with all islands arising therein and other lands formed by accretion or by reliction, where allowed by law, excepting tax adjudicated lands, and not presently under mineral lease on July 13, 2005, situated in Plaquemines Parish, Louisiana, and more particularly described as follows: Beginning at a point having Coordinates of X = 2,541,958.00 and Y = 351,140.00; thence South 54 degrees 27 minutes 00 seconds East 3,247.26 feet to a point having Coordinates of X = 2,544,600.00 and Y = 349,252.00; thence South 38 degrees 36 minutes 10 seconds West 10,959.81 feet to a point having Coordinates of X = 2,537,762.00 and Y = 340,687.00; thence North 50 degrees 23 minutes 02 seconds West 3,873.65 feet to a point having Coordinates of X = 2,534,778.00 and Y = 343,157.00; thence North 42 degrees 33 minutes 13 seconds East 7,405.21 feet to a point having Coordinates of X = 2,539,786.00 and Y = 348,612.00; thence North 40 degrees 40 minutes 06 seconds East 3,332.92 feet to the point of beginning containing approximately **769 acres**, all as more particularly outlined on a plat on file in the Office of Mineral Resources, Department of Natural Resources. All bearings, distances and coordinates are based on Louisiana Coordinate System of 1927, (North or South Zone), where applicable.

NOTE: The above description of the Tract nominated for lease has been provided and corrected, where required, exclusively by the nomination party. Any mineral lease selected from this Tract and awarded by the Louisiana State Mineral Board shall be without warranty of any kind, either express, implied, or statutory, including, but not limited to, the implied warranties of merchantability and fitness for a particular purpose. Should the mineral lease awarded by the Louisiana State Mineral Board be subsequently modified, cancelled or abrogated due to the existence of conflicting leases, operating agreements, private claims or other future obligations or conditions which may affect all or any portion of the leased Tract, it shall not relieve the Lessee of the obligation to pay any bonus due thereon to the Louisiana State Mineral Board, nor shall the Louisiana State Mineral Board be obligated to refund any consideration paid by the Lessor prior to such modification, cancellation, or abrogation, including, but not limited to, bonuses, rentals and royalties.

NOTE: The State of Louisiana does hereby reserve, and this lease shall be subject to, the imprescriptible right of surface use in the nature of a servitude in favor of the Department of Natural Resources, including its Offices and Commissions, for the sole purpose of implementing, constructing, servicing and maintaining approved coastal zone management and/or restoration projects. Utilization of any and all rights derived under this lease by the mineral lessee, its agents, successors or assigns, shall not interfere with nor hinder the reasonable surface use by the Department of Natural Resources, its Offices or Commissions, as herein above reserved.

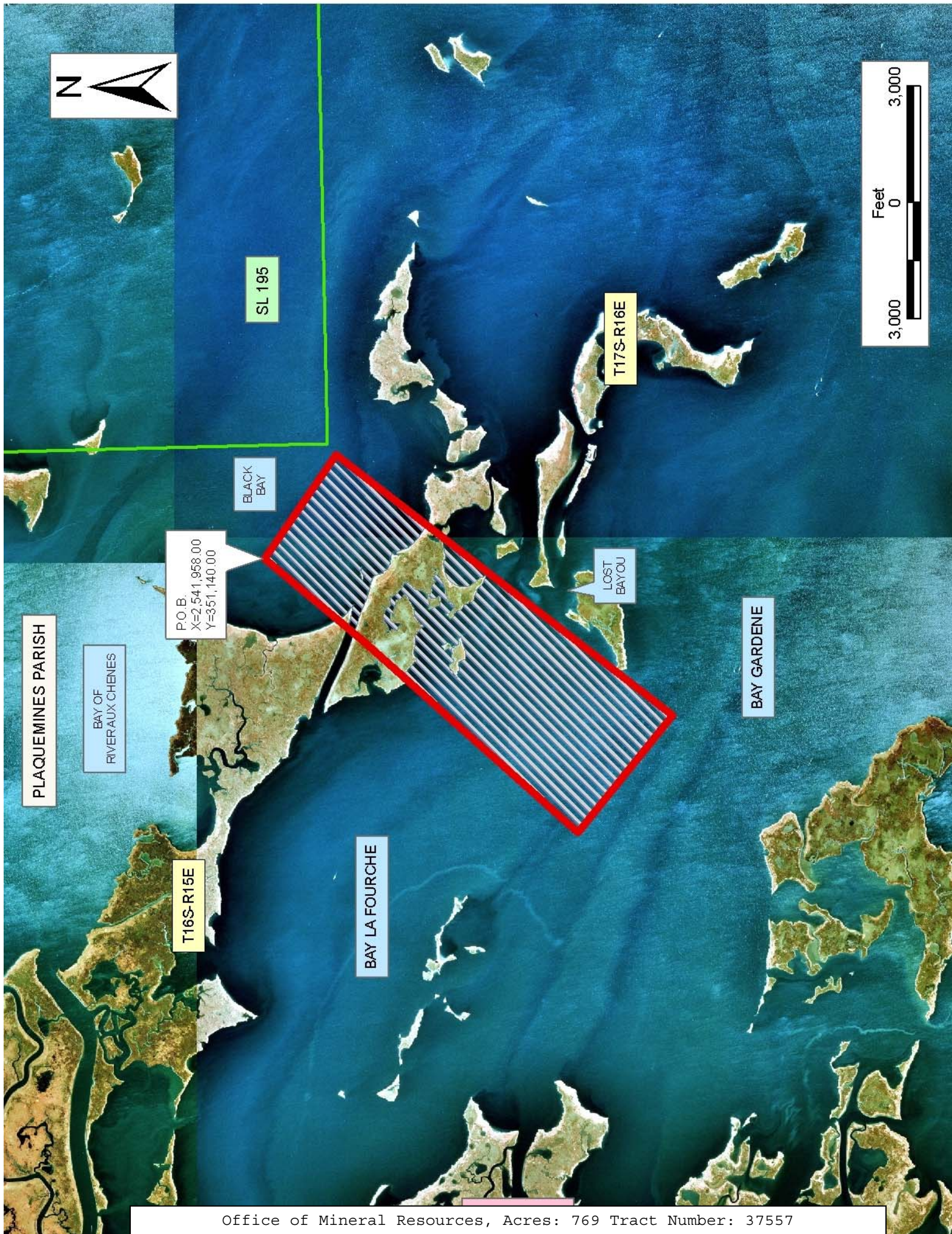


NOTE: The Department of Wildlife and Fisheries has designated certain areas in the coastal waters of the State of Louisiana as Oyster Seed Bed Areas. The exact location of those Seed Bed Areas must be obtained from the Department of Wildlife and Fisheries and any work done under a mineral lease from the State of Louisiana may necessarily be conducted in conformity with the rules and regulations promulgated by the said Department of Wildlife and Fisheries for Oyster Seed Bed Areas.

Applicant: MINERAL SERVICES, INC.

Bidder	Cash Payment	Price/ Acre	Rental	Oil	Gas	Other







**TRACT 37558 - Plaquemines Parish, Louisiana**

All of the lands now or formerly constituting the beds and bottoms of all water bodies of every nature and description the title of which vests in the State of Louisiana, together with all islands arising therein and other lands formed by accretion or by reliction, where allowed by law, excepting tax adjudicated lands, and not presently under mineral lease on July 13, 2005, situated in Plaquemines Parish, Louisiana, and more particularly described as follows: Beginning at a point having Coordinates of X = 2,523,916.00 and Y = 351,205.00; thence South 3,299.00 feet to a point having Coordinates of X = 2,523,916.00 and Y = 347,906.00; thence South 65 degrees 54 minutes 26 seconds West 8,532.28 feet to a point having Coordinates of X = 2,516,127.00 and Y = 344,423.00; thence North 3,427.00 feet to a point having Coordinates of X = 2,516,127.00 and Y = 347,850.00; thence North 66 degrees 41 minutes 48 seconds East 8,480.83 feet to the point of beginning containing approximately **443 acres**, all as more particularly outlined on a plat on file in the Office of Mineral Resources, Department of Natural Resources. All bearings, distances and coordinates are based on Louisiana Coordinate System of 1927, (North or South Zone), where applicable.

NOTE: The above description of the Tract nominated for lease has been provided and corrected, where required, exclusively by the nomination party. Any mineral lease selected from this Tract and awarded by the Louisiana State Mineral Board shall be without warranty of any kind, either express, implied, or statutory, including, but not limited to, the implied warranties of merchantability and fitness for a particular purpose. Should the mineral lease awarded by the Louisiana State Mineral Board be subsequently modified, cancelled or abrogated due to the existence of conflicting leases, operating agreements, private claims or other future obligations or conditions which may affect all or any portion of the leased Tract, it shall not relieve the Lessee of the obligation to pay any bonus due thereon to the Louisiana State Mineral Board, nor shall the Louisiana State Mineral Board be obligated to refund any consideration paid by the Lessor prior to such modification, cancellation, or abrogation, including, but not limited to, bonuses, rentals and royalties.

NOTE: The State of Louisiana does hereby reserve, and this lease shall be subject to, the imprescriptible right of surface use in the nature of a servitude in favor of the Department of Natural Resources, including its Offices and Commissions, for the sole purpose of implementing, constructing, servicing and maintaining approved coastal zone management and/or restoration projects. Utilization of any and all rights derived under this lease by the mineral lessee, its agents, successors or assigns, shall not interfere with nor hinder the reasonable surface use by the Department of Natural Resources, its Offices or Commissions, as herein above reserved.

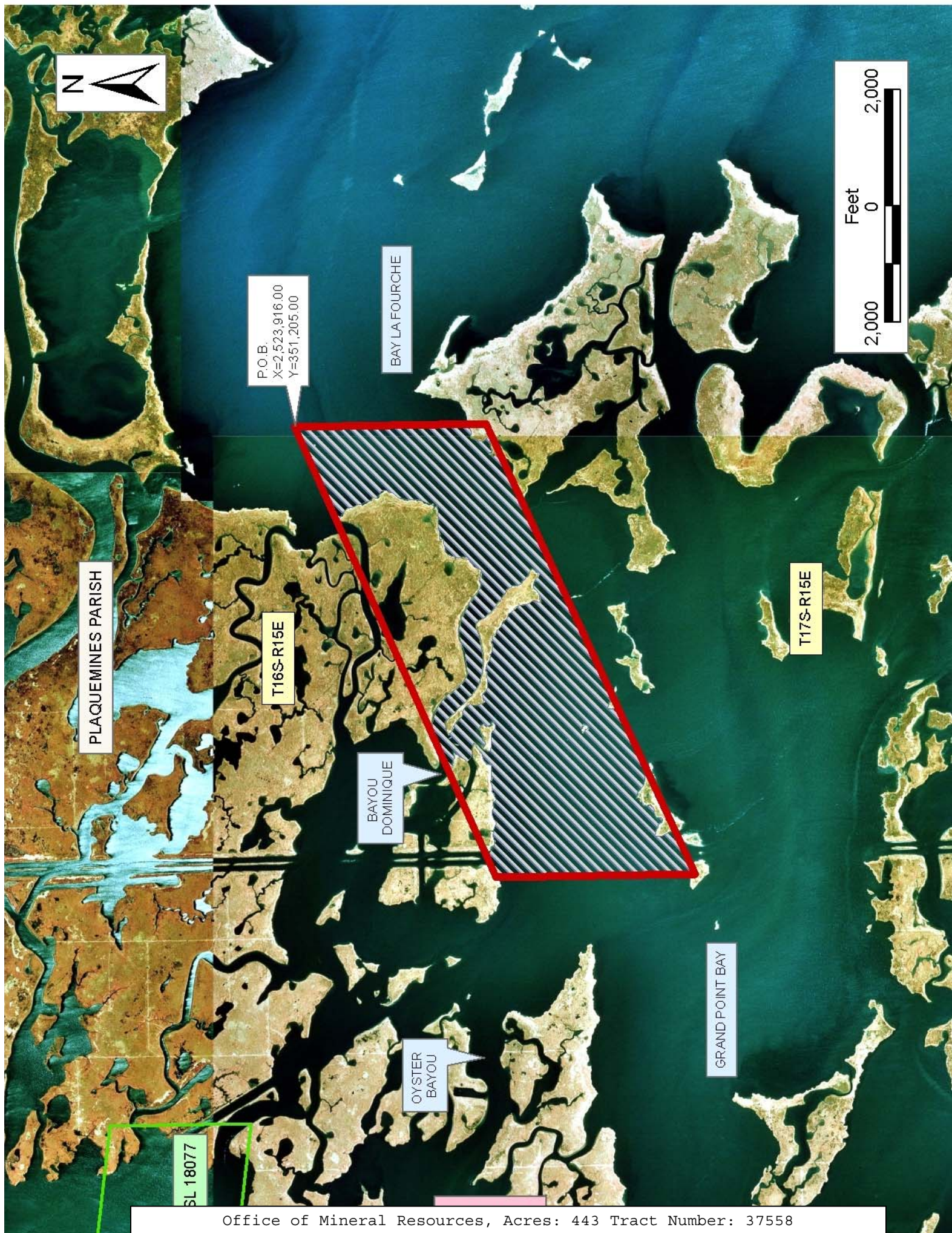
NOTE: The Department of Wildlife and Fisheries has designated certain areas in the coastal waters of the State of Louisiana as Oyster Seed Bed

Areas. The exact location of those Seed Bed Areas must be obtained from the Department of Wildlife and Fisheries and any work done under a mineral lease from the State of Louisiana may necessarily be conducted in conformity with the rules and regulations promulgated by the said Department of Wildlife and Fisheries for Oyster Seed Bed Areas.

Applicant: MINERAL SERVICES, INC.

Bidder	Cash Payment	Price/ Acre	Rental	Oil	Gas	Other







**TRACT 37559 - Plaquemines Parish, Louisiana**

All of the lands now or formerly constituting the beds and bottoms of all water bodies of every nature and description the title of which vests in the State of Louisiana, together with all islands arising therein and other lands formed by accretion or by reliction, where allowed by law, excepting tax adjudicated lands, and not presently under mineral lease on July 13, 2005, situated in Plaquemines Parish, Louisiana, and more particularly described as follows: Beginning at a point having Coordinates of X = 2,537,863.00 and Y = 350,409.00; thence South 46 degrees 56 minutes 24 seconds East 2,631.95 feet to a point having Coordinates of X = 2,539,786.00 and Y = 348,612.00; thence South 42 degrees 33 minutes 13 seconds West 7,405.21 feet to a point having Coordinates of X = 2,534,778.00 and Y = 343,157.00; thence South 43 degrees 10 minutes 06 seconds West 7,477.94 feet to a point having Coordinates of X = 2,529,662.00 and Y = 337,703.00; thence North 02 degrees 42 minutes 27 seconds West 5,228.84 feet to a point having Coordinates of X = 2,529,415.00 and Y = 342,926.00; thence North 48 degrees 27 minutes 59 seconds East 11,285.57 feet to the point of beginning containing approximately **948 acres**, all as more particularly outlined on a plat on file in the Office of Mineral Resources, Department of Natural Resources. All bearings, distances and coordinates are based on Louisiana Coordinate System of 1927, (North or South Zone), where applicable.

NOTE: The above description of the Tract nominated for lease has been provided and corrected, where required, exclusively by the nomination party. Any mineral lease selected from this Tract and awarded by the Louisiana State Mineral Board shall be without warranty of any kind, either express, implied, or statutory, including, but not limited to, the implied warranties of merchantability and fitness for a particular purpose. Should the mineral lease awarded by the Louisiana State Mineral Board be subsequently modified, cancelled or abrogated due to the existence of conflicting leases, operating agreements, private claims or other future obligations or conditions which may affect all or any portion of the leased Tract, it shall not relieve the Lessee of the obligation to pay any bonus due thereon to the Louisiana State Mineral Board, nor shall the Louisiana State Mineral Board be obligated to refund any consideration paid by the Lessor prior to such modification, cancellation, or abrogation, including, but not limited to, bonuses, rentals and royalties.

NOTE: The State of Louisiana does hereby reserve, and this lease shall be subject to, the imprescriptible right of surface use in the nature of a servitude in favor of the Department of Natural Resources, including its Offices and Commissions, for the sole purpose of implementing, constructing, servicing and maintaining approved coastal zone management and/or restoration projects. Utilization of any and all rights derived under this lease by the mineral lessee, its agents, successors or assigns, shall not interfere with nor hinder the reasonable surface use by the Department of Natural Resources, its Offices or Commissions, as herein above reserved.

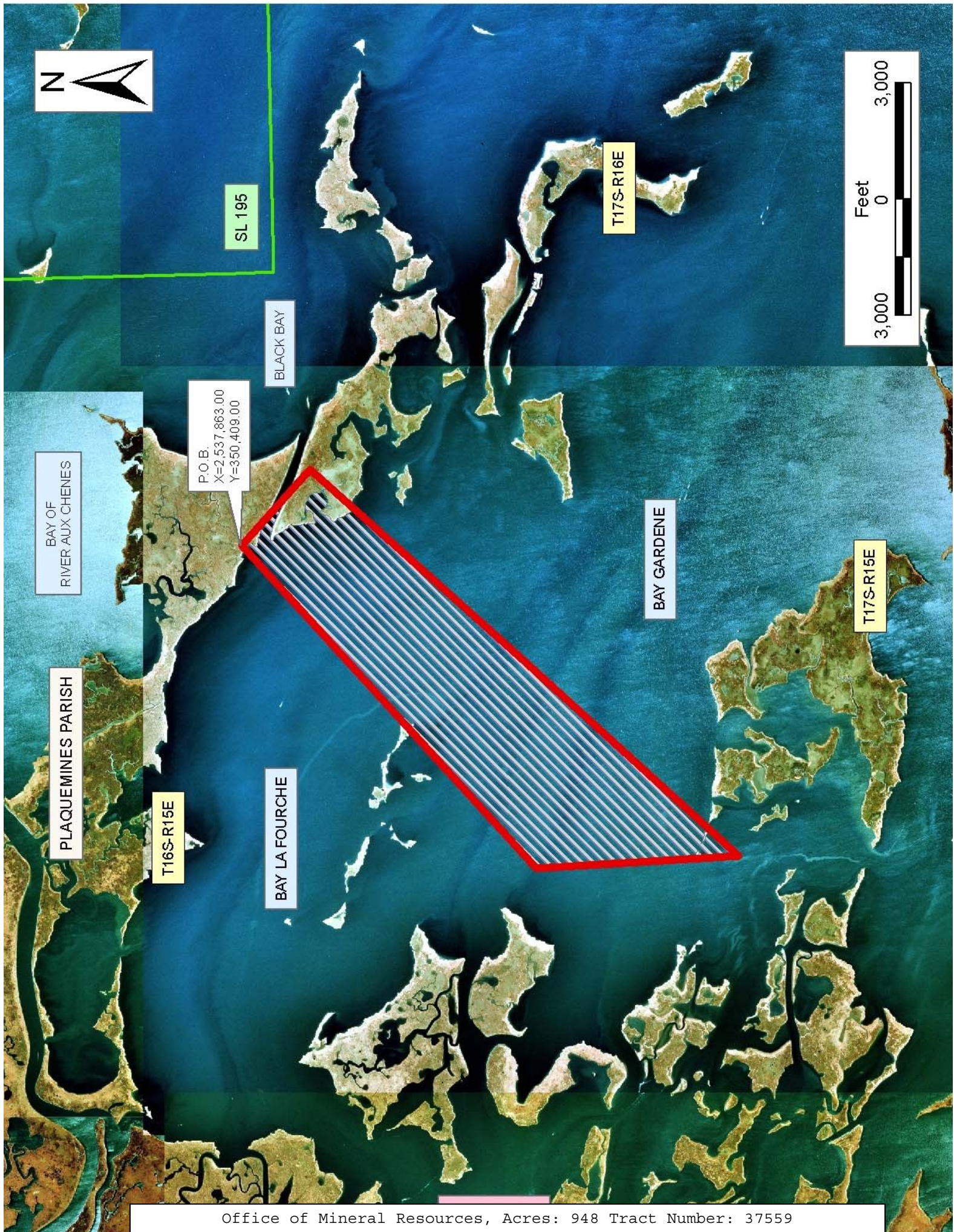


NOTE: The Department of Wildlife and Fisheries has designated certain areas in the coastal waters of the State of Louisiana as Oyster Seed Bed Areas. The exact location of those Seed Bed Areas must be obtained from the Department of Wildlife and Fisheries and any work done under a mineral lease from the State of Louisiana may necessarily be conducted in conformity with the rules and regulations promulgated by the said Department of Wildlife and Fisheries for Oyster Seed Bed Areas.

Applicant: MINERAL SERVICES, INC.

Bidder	Cash Payment	Price/ Acre	Rental	Oil	Gas	Other







**TRACT 37560 - Plaquemines Parish, Louisiana**

All of the lands now or formerly constituting the beds and bottoms of all water bodies of every nature and description the title of which vests in the State of Louisiana, together with all islands arising therein and other lands formed by accretion or by reliction, where allowed by law, excepting tax adjudicated lands, and not presently under mineral lease on July 13, 2005, situated in Plaquemines Parish, Louisiana, and more particularly described as follows: Beginning at a point having Coordinates of X = 2,529,415.00 and Y = 342,926.00; thence South 02 degrees 42 minutes 27 seconds East 5,228.84 feet to a point having Coordinates of X = 2,529,662.00 and Y = 337,703.00; thence South 60 degrees 05 minutes 19 seconds West 5,631.08 feet to a point having Coordinates of X = 2,524,781.00 and Y = 334,895.00; thence South 87 degrees 23 minutes 34 seconds West 1,782.85 feet to a point having Coordinates of X = 2,523,000.00 and Y = 334,813.90; thence North 8,186.10 feet to a point having Coordinates of X = 2,523,000.00 and Y = 343,000.00; thence West 4,803.85 feet to a point having Coordinates of X = 2,518,196.15 and Y = 343,000.00; thence North 03 degrees 07 minutes 33 seconds West 2,295.70 feet to a point having Coordinates of X = 2,518,070.97 and Y = 345,292.29; thence North 65 degrees 54 minutes 26 seconds East 6,402.80 feet to a point having Coordinates of X = 2,523,916.00 and Y = 347,906.00; thence South 5,172.00 feet to a point having Coordinates of X = 2,523,916.00 and Y = 342,734.00; thence North 88 degrees 00 minutes 01 seconds East 5,502.35 feet to the point of beginning containing approximately **1,193 acres**, all as more particularly outlined on a plat on file in the Office of Mineral Resources, Department of Natural Resources. All bearings, distances and coordinates are based on Louisiana Coordinate System of 1927, (North or South Zone), where applicable.

NOTE: The above description of the Tract nominated for lease has been provided and corrected, where required, exclusively by the nomination party. Any mineral lease selected from this Tract and awarded by the Louisiana State Mineral Board shall be without warranty of any kind, either express, implied, or statutory, including, but not limited to, the implied warranties of merchantability and fitness for a particular purpose. Should the mineral lease awarded by the Louisiana State Mineral Board be subsequently modified, cancelled or abrogated due to the existence of conflicting leases, operating agreements, private claims or other future obligations or conditions which may affect all or any portion of the leased Tract, it shall not relieve the Lessee of the obligation to pay any bonus due thereon to the Louisiana State Mineral Board, nor shall the Louisiana State Mineral Board be obligated to refund any consideration paid by the Lessor prior to such modification, cancellation, or abrogation, including, but not limited to, bonuses, rentals and royalties.

NOTE: The State of Louisiana does hereby reserve, and this lease shall be subject to, the imprescriptible right of surface use in the nature of a servitude in favor of the Department of Natural Resources, including its Offices and Commissions, for the sole purpose of implementing,

constructing, servicing and maintaining approved coastal zone management and/or restoration projects. Utilization of any and all rights derived under this lease by the mineral lessee, its agents, successors or assigns, shall not interfere with nor hinder the reasonable surface use by the Department of Natural Resources, its Offices or Commissions, as herein above reserved.

NOTE: The Department of Wildlife and Fisheries has designated certain areas in the coastal waters of the State of Louisiana as Oyster Seed Bed Areas. The exact location of those Seed Bed Areas must be obtained from the Department of Wildlife and Fisheries and any work done under a mineral lease from the State of Louisiana may necessarily be conducted in conformity with the rules and regulations promulgated by the said Department of Wildlife and Fisheries for Oyster Seed Bed Areas.

Applicant: MINERAL SERVICES, INC.

Bidder	Cash Payment	Price/ Acre	Rental	Oil	Gas	Other



