

TRACT 37541 - Lafourche and St. James Parishes, Louisiana

All of the lands now or formerly constituting the beds and bottoms of all water bodies of every nature and description the title of which vests in the State of Louisiana, together with all islands arising therein and other lands formed by accretion or by reliction, where allowed by law, excepting tax adjudicated lands, and not presently under mineral lease on July 13, 2005, situated in Lafourche and St. James Parishes, Louisiana, and more particularly described as follows: Beginning at a point having Coordinates of X = 2,160,250.00 and Y = 451,500.00; thence East 8,350.00 feet to a point having Coordinates of X = 2,168,300.00 and Y = 451,500.00; thence South 5,300.00 feet to a point having Coordinates of X = 2,168,600.00 and Y = 446,200.00; thence East 1,500.00 feet to a point having Coordinates of X = 2,170,100.00 and Y = 446,200.00; thence South 1,400.00 feet to a point having Coordinates of X = 2,170,100.00 and Y = 444,800.00; thence West 1,500.00 feet to a point having Coordinates of X = 2,168,600.00 and Y = 444,800.00; thence South 1,300.00 feet to a point having Coordinates of X = 2,168,600.00 and Y = 443,500.00; thence West 8,350.00 feet to a point having Coordinates of X = 2,160,250.00 and Y = 443,500.00; thence North 8,000.00 feet to the point of beginning, containing approximately **1 acre**, all as more particularly outlined on a plat on file in the Office of Mineral Resources, Department of Natural Resources. All bearings, distances and coordinates are based on Louisiana Coordinate System of 1927, (North or South Zone), where applicable.

NOTE: The above description of the Tract nominated for lease has been provided and corrected, where required, exclusively by the nomination party. Any mineral lease selected from this Tract and awarded by the Louisiana State Mineral Board shall be without warranty of any kind, either express, implied, or statutory, including, but not limited to, the implied warranties of merchantability and fitness for a particular purpose. Should the mineral lease awarded by the Louisiana State Mineral Board be subsequently modified, cancelled or abrogated due to the existence of conflicting leases, operating agreements, private claims or other future obligations or conditions which may affect all or any portion of the leased Tract, it shall not relieve the Lessee of the obligation to pay any bonus due thereon to the Louisiana State Mineral Board, nor shall the Louisiana State Mineral Board be obligated to refund any consideration paid by the Lessor prior to such modification, cancellation, or abrogation, including, but not limited to, bonuses, rentals and royalties.

NOTE: The State of Louisiana does hereby reserve, and this lease shall be subject to, the imprescriptible right of surface use in the nature of a servitude in favor of the Department of Natural Resources, including its Offices and Commissions, for the sole purpose of implementing, constructing, servicing and maintaining approved coastal zone management and/or restoration projects. Utilization of any and all rights derived under this lease by the mineral lessee, its agents, successors or assigns, shall not interfere with nor hinder the reasonable surface use by the

Department of Natural Resources, its Offices or Commissions, as herein above reserved.

Applicant: FRANZ P. SCHOEFFLER

Bidder	Cash Payment	Price/Acre	Rental	Oil	Gas	Other



ST JAMES PARISH

LAFOURCHE PARISH

BAYOU
PETIT CHACKBAY

GRAND
BAYOU

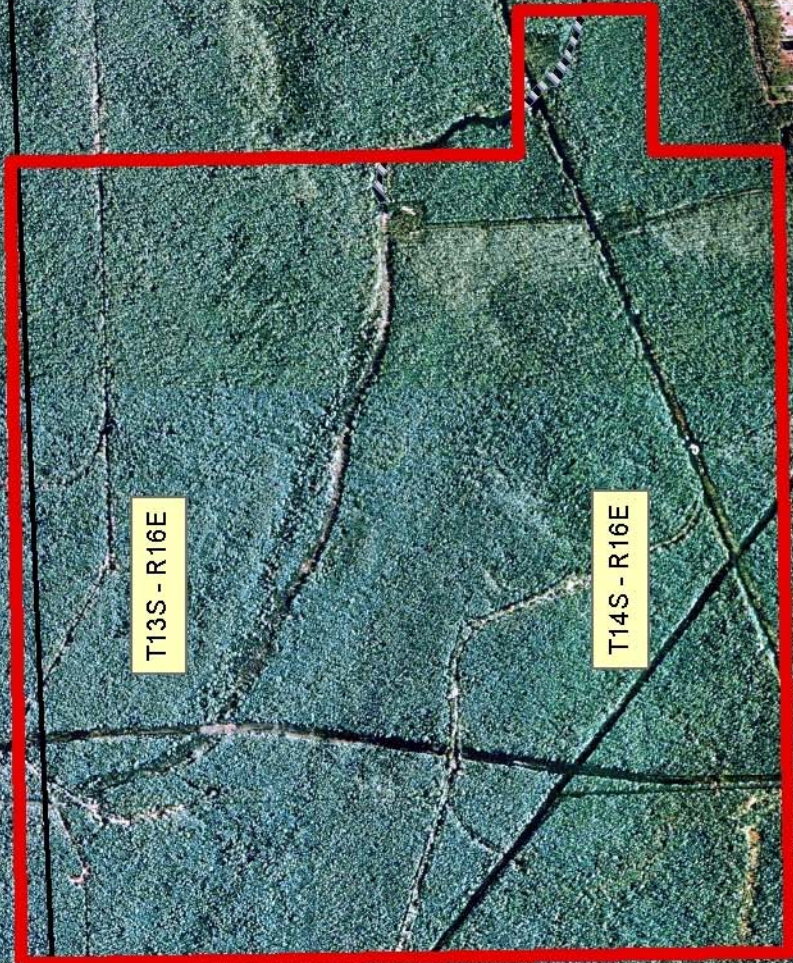
BAYOU
ONION

BAYOU
CITAMON

P.O.B.
X=2,160,250.00
Y=451,500.00

T13S - R16E

T14S - R16E



TRACT 37542 - Portion of Block 24, Chandeleur Sound Area, St. Bernard Parish, Louisiana

All of the lands now or formerly constituting the beds and bottoms of all water bodies of every nature and description the title of which vests in the State of Louisiana, together with all islands arising therein and other lands formed by accretion or by reliction, where allowed by law, excepting tax adjudicated lands, and not presently under mineral lease on July 13, 2005, situated in St. Bernard Parish, Louisiana, and more particularly described as follows: Beginning at a point on the North line of Block 24, Chandeleur Sound Area, having Coordinates of X = 2,648,174.00 and Y = 440,330.00; thence South 01 degrees 51 minutes 44 seconds East 11,139.88 feet to a point having Coordinates of X = 2,648,536.00 and Y = 429,196.00; thence South 86 degrees 19 minutes 44 seconds West 3,696.13 feet to the Northeast corner of State Lease No. 18329 having Coordinates of X = 2,644,847.45 and Y = 428,959.33; thence South 85 degrees 18 minutes 50 seconds West 3,648.76 feet on the North line of said State Lease No. 18329 to its Northwest corner having Coordinates of X = 2,641,210.89 and Y = 428,661.25; thence South 81 degrees 47 minutes 37 seconds West 1,361.26 feet to the Northeast corner of State Lease No.18330 having Coordinates of X = 2,639,863.57 and Y = 428,466.94; thence South 87 degrees 11 minutes 48 seconds West 1,741.65 feet on the North line of said State Lease No. 18330 to a point having Coordinates of X = 2,638,124.00 and Y = 428,381.76; thence North 01 degrees 24 minutes 34 seconds West 11,951.86 feet to a point on the North line of said Block 24, having Coordinates of X = 2,637,830.00 and Y = 440,330.00; thence East 10,344.00 feet on the North line of said Block 24 to the point of beginning, containing approximately **2,404 acres**, all as more particularly outlined on a plat on file in the Office of Mineral Resources, Department of Natural Resources. All bearings, distances and coordinates are based on Louisiana Coordinate System of 1927, (North or South Zone), where applicable.

NOTE: The above description of the Tract nominated for lease has been provided and corrected, where required, exclusively by the nomination party. Any mineral lease selected from this Tract and awarded by the Louisiana State Mineral Board shall be without warranty of any kind, either express, implied, or statutory, including, but not limited to, the implied warranties of merchantability and fitness for a particular purpose. Should the mineral lease awarded by the Louisiana State Mineral Board be subsequently modified, cancelled or abrogated due to the existence of conflicting leases, operating agreements, private claims or other future obligations or conditions which may affect all or any portion of the leased Tract, it shall not relieve the Lessee of the obligation to pay any bonus due thereon to the Louisiana State Mineral Board, nor shall the Louisiana State Mineral Board be obligated to refund any consideration paid by the Lessor prior to such modification, cancellation, or abrogation, including, but not limited to, bonuses, rentals and royalties.

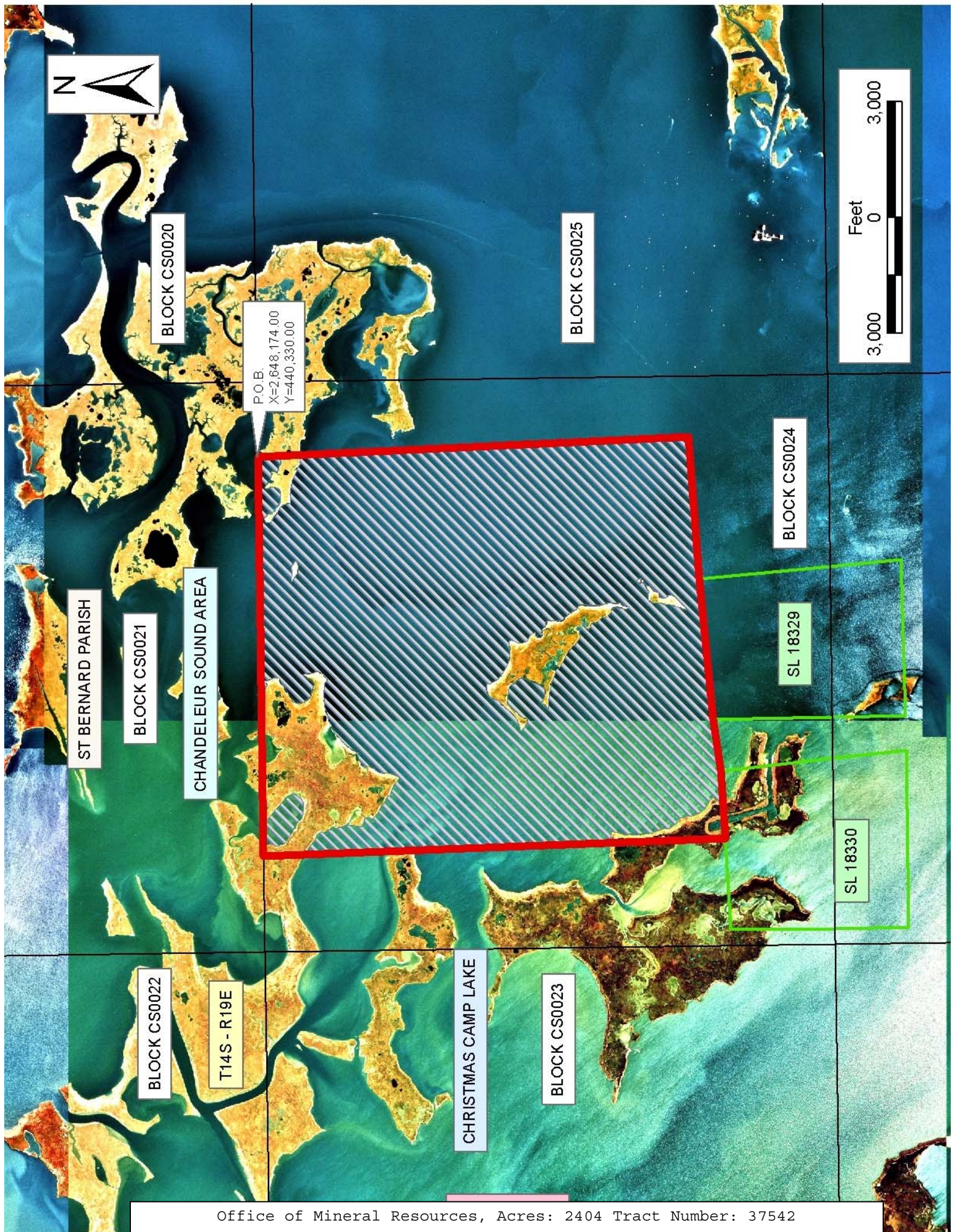
NOTE: The Office of Mineral Resources will require a minimum bonus of \$230 per acre and a minimum royalty of 23%.

NOTE: The State of Louisiana does hereby reserve, and this lease shall be subject to, the imprescriptible right of surface use in the nature of a servitude in favor of the Department of Natural Resources, including its Offices and Commissions, for the sole purpose of implementing, constructing, servicing and maintaining approved coastal zone management and/or restoration projects. Utilization of any and all rights derived under this lease by the mineral lessee, its agents, successors or assigns, shall not interfere with nor hinder the reasonable surface use by the Department of Natural Resources, its Offices or Commissions, as herein above reserved.

NOTE: The Department of Wildlife and Fisheries has designated certain areas in the coastal waters of the State of Louisiana as Oyster Seed Bed Areas. The exact location of those Seed Bed Areas must be obtained from the Department of Wildlife and Fisheries and any work done under a mineral lease from the State of Louisiana may necessarily be conducted in conformity with the rules and regulations promulgated by the said Department of Wildlife and Fisheries for Oyster Seed Bed Areas.

Applicant: KARE-SUE ENERGY, INC.

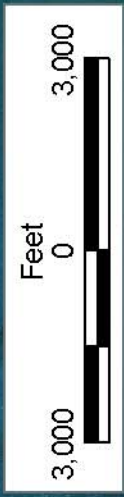
Bidder	Cash Payment	Price/Acre	Rental	Oil	Gas	Other



BLOCK CS0020

BLOCK CS0025

P.O.I.
X=2,648,174.00
Y=440,330.00



ST BERNARD PARISH

BLOCK CS0021

CHANDELEUR SOUND AREA

BLOCK CS0024

SL 18329

SL 18330

BLOCK CS0022

T14S - R19E

CHRISTMAS CAMP LAKE

BLOCK CS0023

TRACT 37543 - Cameron Parish, Louisiana

All of the lands now or formerly constituting the beds and bottoms of all water bodies of every nature and description the title of which vests in the State of Louisiana, together with all islands arising therein and other lands formed by accretion or by reliction, where allowed by law, excepting tax adjudicated lands, and not presently under mineral lease on July 13, 2005, situated in Cameron Parish, Louisiana, and more particularly described as follows: Beginning at a point having Coordinates of X = 1,191,492.76 and Y = 426,036.19; thence South 18,480.00 feet to a point having Coordinates of X = 1,191,492.76 and Y = 407,556.19; thence West 2,987.29 feet to a point on the Texas Louisiana Boundary having Coordinates of X = 1,188,505.46 and Y = 407,556.19; thence along the said Texas Louisiana Boundary the following courses: North 06 degrees 54 minutes 40 seconds West 502.47 feet to a point having Coordinates of X = 1,188,445.00 and Y = 408,055.00; North 20 degrees 54 minutes 29 seconds West 476.37 feet to a point having Coordinates of X = 1,188,275.00 and Y = 408,500.00; North 43 degrees 10 minutes 54 seconds West 1,782.81 feet to a point having Coordinates of X = 1,187,055.00 and Y = 409,800.00; North 41 degrees 19 minutes 15 seconds West 1,597.82 feet to a point having Coordinates of X = 1,186,000.00 and Y = 411,000.00, North 54 degrees 44 minutes 03 seconds West 1,714.67 feet to a point having Coordinates of X = 1,184,600.00 and Y = 411,990.00; and North 52 degrees 19 minutes 43 seconds West 58.20 feet to a point having Coordinates of X = 1,184,553.93 and Y = 412,025.57; thence North 14,010.62 feet to a point having Coordinates of X = 1,184,553.93 and Y = 426,036.19; thence East 6,938.82 feet to the point of beginning, containing approximately **1,396 acres, LESS AND EXCEPT** that portion thereof, if any, located West of the boundary line between the States of Texas and Louisiana as determined by the report of the Special Master and adjudicated by the Supreme Court of the United States in litigation styled **Texas v. Louisiana, et al No. 36 Original**, or as otherwise approved by said court, all as more particularly outlined on a plat on file in the Office of Mineral Resources, Department of Natural Resources. All bearings, distances and coordinates are based on Louisiana Coordinate System of 1927, (North or South Zone), where applicable.

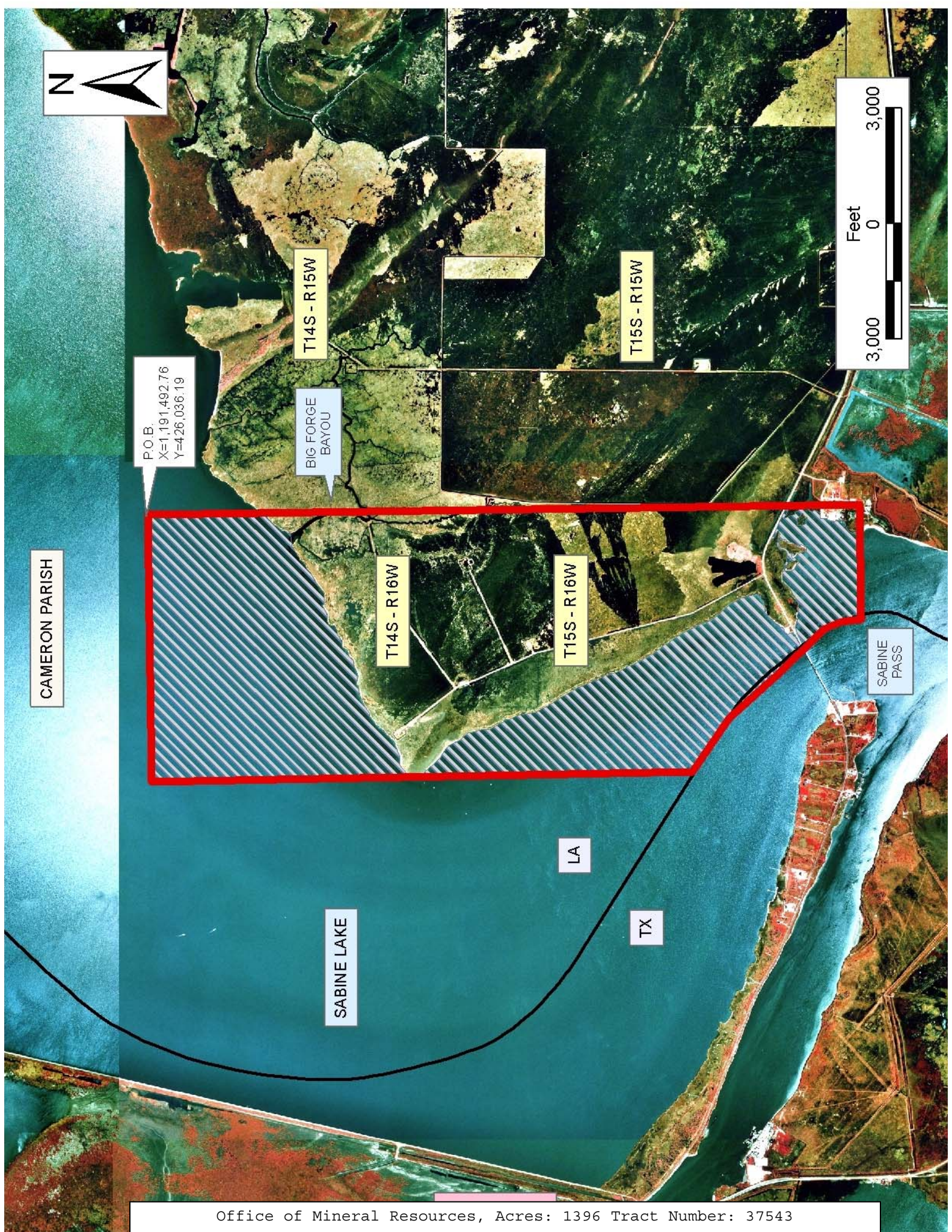
NOTE: The above description of the Tract nominated for lease has been provided and corrected, where required, exclusively by the nomination party. Any mineral lease selected from this Tract and awarded by the Louisiana State Mineral Board shall be without warranty of any kind, either express, implied, or statutory, including, but not limited to, the implied warranties of merchantability and fitness for a particular purpose. Should the mineral lease awarded by the Louisiana State Mineral Board be subsequently modified, cancelled or abrogated due to the existence of conflicting leases, operating agreements, private claims or other future obligations or conditions which may affect all or any portion of the leased Tract, it shall not relieve the Lessee of the obligation to pay any bonus due thereon to the Louisiana State Mineral Board, nor shall the Louisiana State Mineral Board be obligated to refund any consideration

paid by the Lessor prior to such modification, cancellation, or abrogation, including, but not limited to, bonuses, rentals and royalties.

NOTE: The State of Louisiana does hereby reserve, and this lease shall be subject to, the imprescriptible right of surface use in the nature of a servitude in favor of the Department of Natural Resources, including its Offices and Commissions, for the sole purpose of implementing, constructing, servicing and maintaining approved coastal zone management and/or restoration projects. Utilization of any and all rights derived under this lease by the mineral lessee, its agents, successors or assigns, shall not interfere with nor hinder the reasonable surface use by the Department of Natural Resources, its Offices or Commissions, as herein above reserved.

Applicant: FLEETWOOD RESOURCES, INC.

Bidder	Cash Payment	Price/Acre	Rental	Oil	Gas	Other



CAMERON PARISH

P.O.B.
X=1,191,492.76
Y=426,036.19

T14S - R15W

BIG FORGE
BAYOU

T15S - R15W

T14S - R16W

T15S - R16W

Feet
0 3,000

SABINE LAKE

LA

TX

SABINE
PASS

TRACT 37544 - Vermilion Parish, Louisiana

A portion of the bed and bottom of White Lake created by shoreline erosion since November of 1942, and therefore not in existence at the time Special Act No. 92 of the 1942 Regular Session of the Louisiana Legislature was enacted, claimed as one hundred percent (100%) owned by the State of Louisiana, not presently under mineral lease by the State of Louisiana on July 13, 2005 and being more particularly described as follows: Beginning at a point having Coordinates of X = 1,659,840.25 and Y = 411,738.02; thence South approximately 4,500 feet to a point on the 1942 Shoreline of White Lake, said point also located on the Northern boundary of State Lease No. 18088, thence Northwesterly, Westerly and Southwesterly along said Shoreline and the Northern boundary of said State Lease No. 18088 and State Lease No. 18089 to a point having a Coordinate of X = 1,641,360.25; thence North approximately 8,706 feet to a point having Coordinates of X = 1,641,360.25 and Y = 411,738.02; thence East 18,480.00 feet to the point of beginning, containing approximately **376 acres**, all as more particularly outlined on a plat on file in the Office of Mineral Resources, Department of Natural Resources. All bearings, distances and coordinates are based on Louisiana Coordinate System of 1927, (South Zone).

NOTE: Any bid on this Tract shall contain, as additional consideration by the bidder, the obligation of the bidder, should a title dispute arise regarding this Tract and litigation ensue, to pay to the State, as same may be billed, any and all legal costs incurred by the State of Louisiana in defending its title to said Tract up to a maximum aggregate amount of one hundred fifty thousand and no/100 dollars (\$150,000.00) for all leases taken by same successful bidder in the same area. Failure to so include the additional consideration herein set forth may, at the sole discretion of the State Mineral Board, render the bid unacceptable.

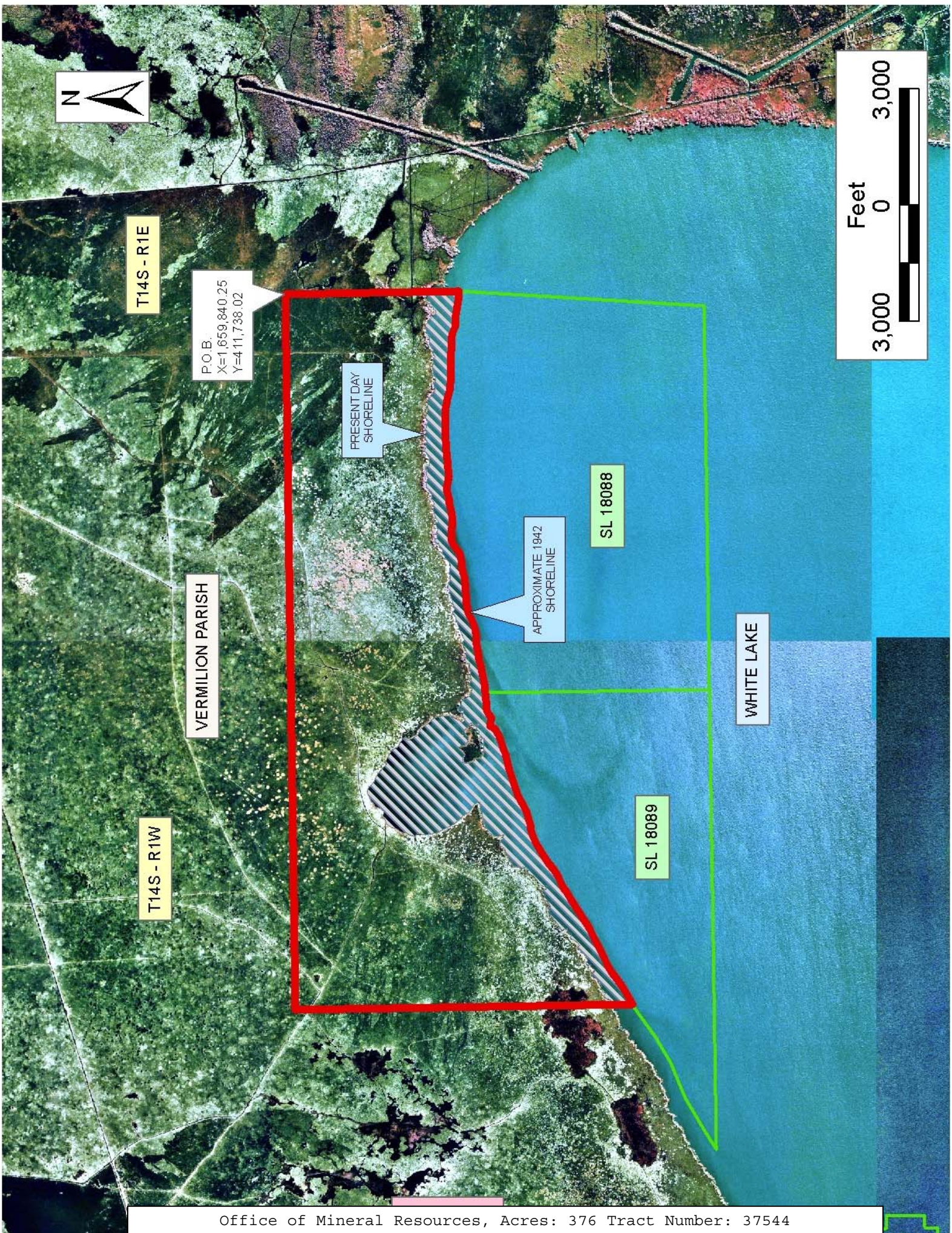
NOTE: The above description of the Tract nominated for lease has been provided and corrected, where required, exclusively by the nomination party. Any mineral lease selected from this Tract and awarded by the Louisiana State Mineral Board shall be without warranty of any kind, either express, implied, or statutory, including, but not limited to, the implied warranties of merchantability and fitness for a particular purpose. Should the mineral lease awarded by the Louisiana State Mineral Board be subsequently modified, cancelled or abrogated due to the existence of conflicting leases, operating agreements, private claims or other future obligations or conditions which may affect all or any portion of the leased Tract, it shall not relieve the Lessee of the obligation to pay any bonus due thereon to the Louisiana State Mineral Board, nor shall the Louisiana State Mineral Board be obligated to refund any consideration paid by the Lessor prior to such modification, cancellation, or abrogation, including, but not limited to, bonuses, rentals and royalties.

NOTE: The State of Louisiana does hereby reserve, and this lease shall be subject to, the imprescriptible right of surface use in the nature of a servitude in favor of the Department of Natural Resources, including its

Offices and Commissions, for the sole purpose of implementing, constructing, servicing and maintaining approved coastal zone management and/or restoration projects. Utilization of any and all rights derived under this lease by the mineral lessee, its agents, successors or assigns, shall not interfere with nor hinder the reasonable surface use by the Department of Natural Resources, its Offices or Commissions, as herein above reserved.

Applicant: CYPRESS ENERGY CORPORATION

Bidder	Cash Payment	Price/Acre	Rental	Oil	Gas	Other



T14S - R1E

P.O.B.
X=1,659,840.25
Y=411,738.02

PRESENT DAY
SHORELINE

APPROXIMATE 1842
SHORELINE

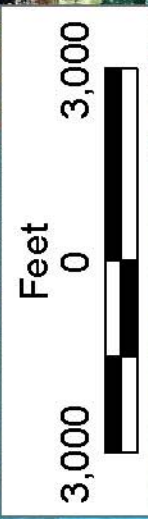
SL 18088

SL 18089

VERMILION PARISH

T14S - R1W

WHITE LAKE



TRACT 37545 - Vermilion Parish, Louisiana

A portion of the bed and bottom of White Lake created by shoreline erosion since November of 1942, and therefore not in existence at the time Special Act No. 92 of the 1942 Regular Session of the Louisiana Legislature was enacted, claimed as one hundred percent (100%) owned by the State of Louisiana, not presently under mineral lease by the State of Louisiana on July 13, 2005 and being more particularly described as follows: Beginning at a point having Coordinates of X = 1,641,360.25 and Y = 411,738.02; thence South approximately 8,706.00 feet to the 1942 Shoreline of White Lake; thence Southwesterly along said Shoreline to the Southeast corner of State Lease No. 16853, and also being the Northeast corner of State Lease No. 16854; thence along the boundaries of said State Lease No. 16853 the following: North 23 degrees 01 minutes 13 seconds West approximately 1,531 feet to a point having Coordinates of X = 1,634,563.60 and Y = 400,924.30, West 3,125.20 feet to a point having Coordinates of X = 1,631,438.40 and Y = 400,924.30 and South approximately 1,829 feet to its Southwest corner located on said 1942 Shoreline of White Lake; thence Westerly, Northwesterly, Northerly and Northwesterly along said Shoreline to a point having a Coordinate of Y = 411,738.02; thence East approximately 13,836 feet to the point of beginning, **LESS AND EXCEPT** those portions, if any, of the above described tract which may lie within State Lease No.'s 16853 and 16854, containing approximately **96 acres**, all as more particularly outlined on a plat on file in the Office of Mineral Resources, Department of Natural Resources. All bearings, distances and coordinates are based on Louisiana Coordinate System of 1927, (South Zone).

NOTE: Any bid on this Tract shall contain, as additional consideration by the bidder, the obligation of the bidder, should a title dispute arise regarding this Tract and litigation ensue, to pay to the State, as same may be billed, any and all legal costs incurred by the State of Louisiana in defending its title to said Tract up to a maximum aggregate amount of one hundred fifty thousand and no/100 dollars (\$150,000.00) for all leases taken by same successful bidder in the same area. Failure to so include the additional consideration herein set forth may, at the sole discretion of the State Mineral Board, render the bid unacceptable.

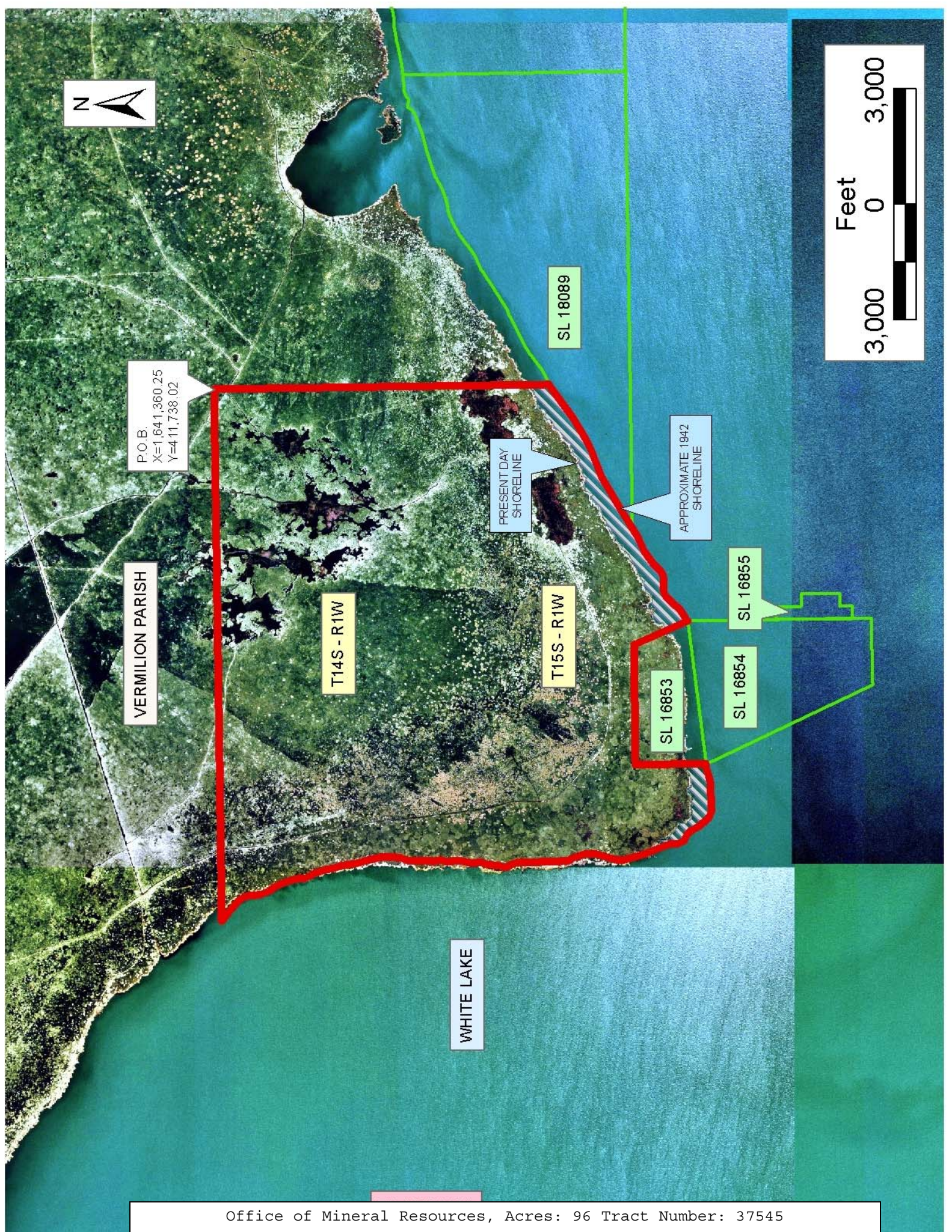
NOTE: The above description of the Tract nominated for lease has been provided and corrected, where required, exclusively by the nomination party. Any mineral lease selected from this Tract and awarded by the Louisiana State Mineral Board shall be without warranty of any kind, either express, implied, or statutory, including, but not limited to, the implied warranties of merchantability and fitness for a particular purpose. Should the mineral lease awarded by the Louisiana State Mineral Board be subsequently modified, cancelled or abrogated due to the existence of conflicting leases, operating agreements, private claims or other future obligations or conditions which may affect all or any portion of the leased Tract, it shall not relieve the Lessee of the obligation to pay any bonus due thereon to the Louisiana State Mineral Board, nor shall the Louisiana State Mineral Board be obligated to refund any consideration

paid by the Lessor prior to such modification, cancellation, or abrogation, including, but not limited to, bonuses, rentals and royalties.

NOTE: The State of Louisiana does hereby reserve, and this lease shall be subject to, the imprescriptible right of surface use in the nature of a servitude in favor of the Department of Natural Resources, including its Offices and Commissions, for the sole purpose of implementing, constructing, servicing and maintaining approved coastal zone management and/or restoration projects. Utilization of any and all rights derived under this lease by the mineral lessee, its agents, successors or assigns, shall not interfere with nor hinder the reasonable surface use by the Department of Natural Resources, its Offices or Commissions, as herein above reserved.

Applicant: CYPRESS ENERGY CORPORATION

Bidder	Cash Payment	Price/Acre	Rental	Oil	Gas	Other



TRACT 37546 - Cameron Parish, Louisiana

All lands, including lands added by accretion and reliction and lands now or formerly constituting the beds and bottoms of all water bodies of every nature and description, owned by and not presently under mineral lease as of July 13, 2005 from the State of Louisiana, situated in Cameron Parish, Louisiana, and being more fully described as follows: Beginning at a point having Coordinates of X = 1,432,300.00 and Y = 414,300.00; thence South 13,690.82 feet to a point on the Coastline as per the Supreme Court Decree dated June 16, 1975, having Coordinates of X = 1,432,300.00 and Y = 400,609.18; thence along said Coastline the following courses: Northwesterly in a straight line to a point having Coordinates of X = 1,431,526 and Y = 400,742, Southwesterly in a straight line to a point having Coordinates of X = 1,431,465 and Y = 400,740, Northwesterly in a straight line to a point having Coordinates of X = 1,429,020 and Y = 401,485, Northeasterly in a straight line to a point having Coordinates of X = 1,429,035 and Y = 401,760, Northwesterly in a straight line to a point having Coordinates of X = 1,425,600 and Y = 402,610, Northwesterly in a straight line to a point having Coordinates of X = 1,424,630 and Y = 403,175, Northwesterly in a straight line to a point having Coordinates of X = 1,416,365 and Y = 405,700 and Northwesterly in a straight line to a point having Coordinates of X = 1,413,904.58 and Y = 406,252.50; thence North 8,047.50 feet to a point having Coordinates of X = 1,413,904.58 and Y = 414,300.00; thence East 18,395.42 feet to the point of beginning, containing approximately **359 acres**, all as more particularly outlined on a plat on file in the Office of Mineral Resources, Department of Natural Resources. All bearings, distances and coordinates are based on Louisiana Coordinate System of 1927, (North or South Zone), where applicable.

NOTE: The above description of the Tract nominated for lease has been provided and corrected, where required, exclusively by the nomination party. Any mineral lease selected from this Tract and awarded by the Louisiana State Mineral Board shall be without warranty of any kind, either express, implied, or statutory, including, but not limited to, the implied warranties of merchantability and fitness for a particular purpose. Should the mineral lease awarded by the Louisiana State Mineral Board be subsequently modified, cancelled or abrogated due to the existence of conflicting leases, operating agreements, private claims or other future obligations or conditions which may affect all or any portion of the leased Tract, it shall not relieve the Lessee of the obligation to pay any bonus due thereon to the Louisiana State Mineral Board, nor shall the Louisiana State Mineral Board be obligated to refund any consideration paid by the Lessor prior to such modification, cancellation, or abrogation, including, but not limited to, bonuses, rentals and royalties.

NOTE: The State of Louisiana does hereby reserve, and this lease shall be subject to, the imprescriptible right of surface use in the nature of a servitude in favor of the Department of Natural Resources, including its Offices and Commissions, for the sole purpose of implementing, constructing, servicing and maintaining approved coastal zone management

and/or restoration projects. Utilization of any and all rights derived under this lease by the mineral lessee, its agents, successors or assigns, shall not interfere with nor hinder the reasonable surface use by the Department of Natural Resources, its Offices or Commissions, as herein above reserved.

Applicant: C.J. HALEY

Bidder	Cash Payment	Price/Acre	Rental	Oil	Gas	Other



TRACT 37547 - Cameron Parish, Louisiana

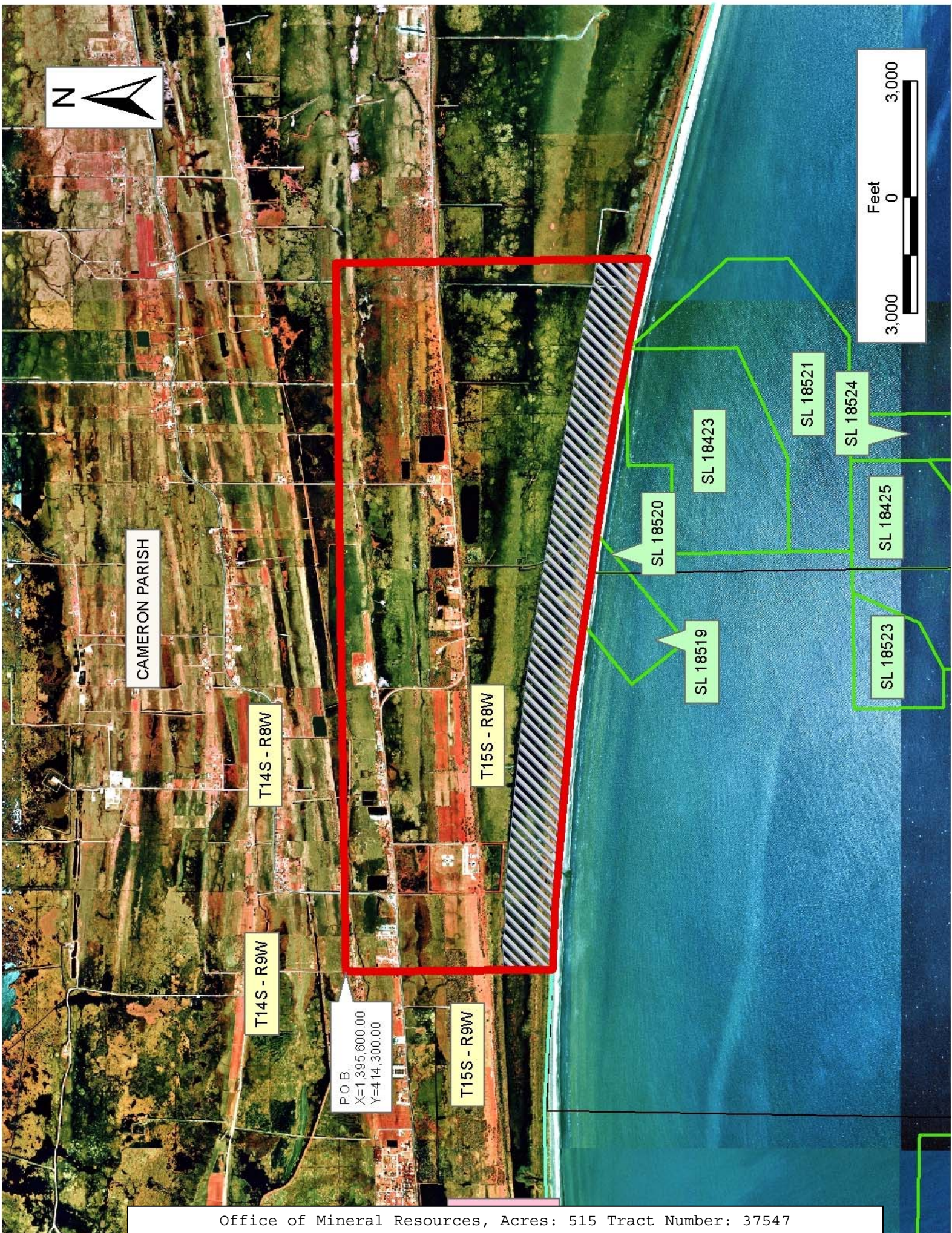
All lands, including lands added by accretion and reliction and lands now or formerly constituting the beds and bottoms of all water bodies of every nature and description, owned by and not presently under mineral lease as of July 13, 2005 from the State of Louisiana, situated in Cameron Parish, Louisiana, and being more fully described as follows: Beginning at a point having Coordinates of X = 1,395,600.00 and Y = 414,300.00; thence East 18,304.58 feet to a point having Coordinates of X = 1,413,904.58 and Y = 414,300.00; thence South 8,047.50 feet to a point on the Coastline as per the Supreme Court Decree dated June 16, 1975, having Coordinates of X = 1,413,904.58 and Y = 406,252.50; thence along said Coastline the following courses: Northwesterly on a straight line to a point having Coordinates of X = 1,410,175 and Y = 407,090, Northwesterly on a straight line to a point having Coordinates of X = 1,402,525 and Y = 408,365, Northwesterly on a straight line to a point having Coordinates of X = 1,397,220 and Y = 408,870 and Northwesterly on a straight line to a point having Coordinates of X = 1,395,600.00 and Y = 408,966.21; thence North 5,333.79 feet to the point of beginning, containing approximately **515 acres**, all as more particularly outlined on a plat on file in the Office of Mineral Resources, Department of Natural Resources. All bearings, distances and coordinates are based on Louisiana Coordinate System of 1927, (North or South Zone), where applicable.

NOTE: The above description of the Tract nominated for lease has been provided and corrected, where required, exclusively by the nomination party. Any mineral lease selected from this Tract and awarded by the Louisiana State Mineral Board shall be without warranty of any kind, either express, implied, or statutory, including, but not limited to, the implied warranties of merchantability and fitness for a particular purpose. Should the mineral lease awarded by the Louisiana State Mineral Board be subsequently modified, cancelled or abrogated due to the existence of conflicting leases, operating agreements, private claims or other future obligations or conditions which may affect all or any portion of the leased Tract, it shall not relieve the Lessee of the obligation to pay any bonus due thereon to the Louisiana State Mineral Board, nor shall the Louisiana State Mineral Board be obligated to refund any consideration paid by the Lessor prior to such modification, cancellation, or abrogation, including, but not limited to, bonuses, rentals and royalties.

NOTE: The State of Louisiana does hereby reserve, and this lease shall be subject to, the imprescriptible right of surface use in the nature of a servitude in favor of the Department of Natural Resources, including its Offices and Commissions, for the sole purpose of implementing, constructing, servicing and maintaining approved coastal zone management and/or restoration projects. Utilization of any and all rights derived under this lease by the mineral lessee, its agents, successors or assigns, shall not interfere with nor hinder the reasonable surface use by the Department of Natural Resources, its Offices or Commissions, as herein above reserved.

Applicant: C.J. HALEY

Bidder	Cash Payment	Price/Acre	Rental	Oil	Gas	Other



CAMERON PARISH

T14S - R8W

T15S - R8W

T14S - R9W

T15S - R9W

P.O.B.
X=1,395,600.00
Y=414,300.00

SL 18520

SL 18423

SL 18519

SL 18521

SL 18524

SL 18425

SL 18523

TRACT 37548 - Cameron Parish, Louisiana

All lands, including lands added by accretion and reliction and lands now or formerly constituting the beds and bottoms of all water bodies of every nature and description, owned by and not presently under mineral lease as of July 13, 2005 from the State of Louisiana, situated in Cameron Parish, Louisiana, and being more fully described as follows: Beginning at a point having Coordinates of X = 1,395,600.00 and Y = 414,300.00; thence South 5,333.79 feet to a point on the Coastline as per the Supreme Court Decree dated June 16, 1975, having Coordinates of X = 1,395,600 and Y = 408,966.21; thence along said Coastline the following courses: Northwesterly on a straight line to a point having Coordinates of X = 1,392,000 and Y = 409,180, Northwesterly on a straight line to a point having Coordinates of X = 1,391,954 and Y = 409,243, Southwesterly on a straight line to a point having Coordinates of X = 1,386,636 and Y = 409,216, Southwesterly on a straight line to a point having Coordinates of X = 1,383,990 and Y = 409,136, Southwesterly on a straight line to a point having Coordinates of X = 1,380,235 and Y = 408,500 and Southwesterly on a straight line to a point having Coordinates of X = 1,377,295.42 and Y = 408,078.03; thence North 6,221.97 feet to a point having Coordinates of X = 1,377,295.42 and Y = 414,300.00; thence East 18,304.58 feet to the point of beginning, containing approximately **232 acres**, all as more particularly outlined on a plat on file in the Office of Mineral Resources, Department of Natural Resources. All bearings, distances and coordinates are based on Louisiana Coordinate System of 1927, (North or South Zone), where applicable.

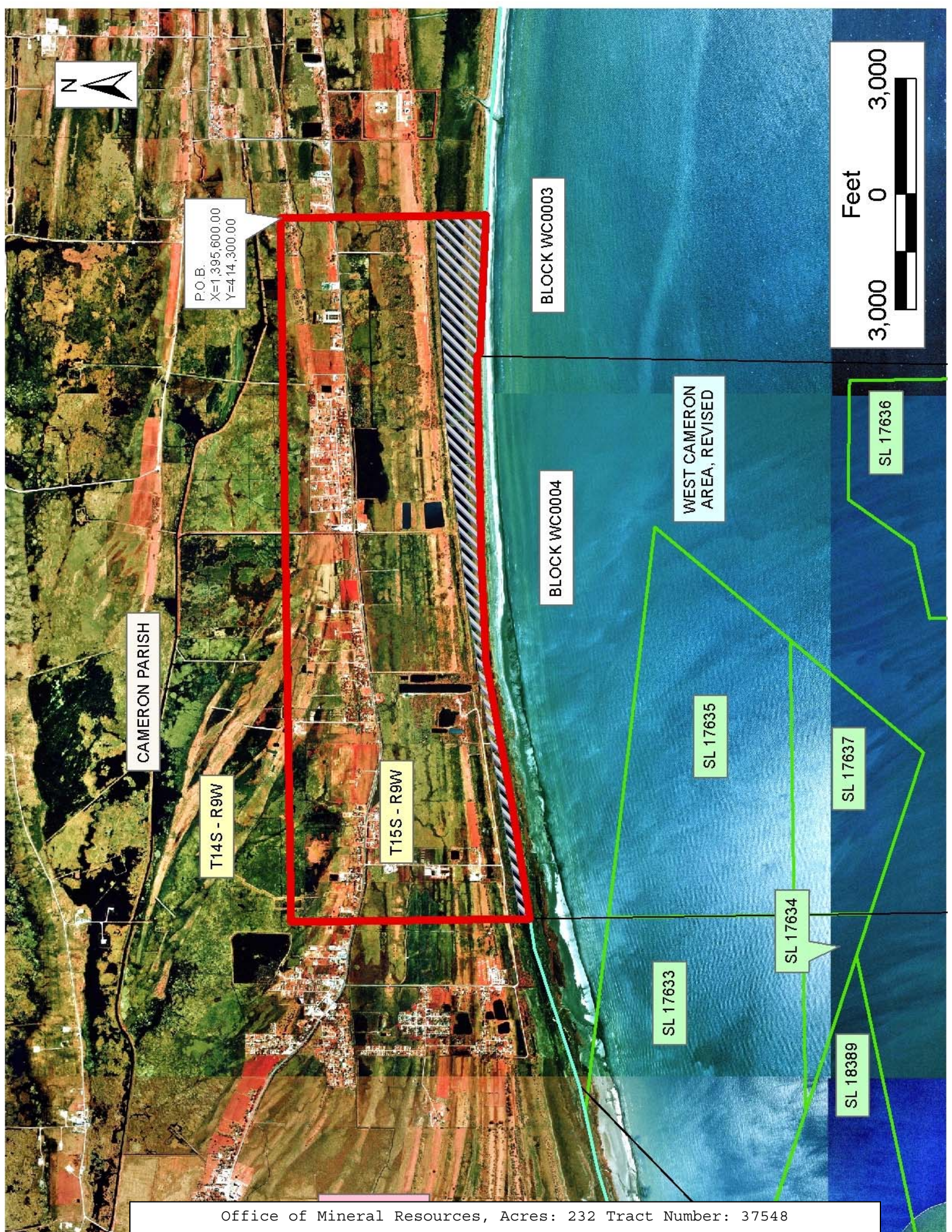
NOTE: The above description of the Tract nominated for lease has been provided and corrected, where required, exclusively by the nomination party. Any mineral lease selected from this Tract and awarded by the Louisiana State Mineral Board shall be without warranty of any kind, either express, implied, or statutory, including, but not limited to, the implied warranties of merchantability and fitness for a particular purpose. Should the mineral lease awarded by the Louisiana State Mineral Board be subsequently modified, cancelled or abrogated due to the existence of conflicting leases, operating agreements, private claims or other future obligations or conditions which may affect all or any portion of the leased Tract, it shall not relieve the Lessee of the obligation to pay any bonus due thereon to the Louisiana State Mineral Board, nor shall the Louisiana State Mineral Board be obligated to refund any consideration paid by the Lessor prior to such modification, cancellation, or abrogation, including, but not limited to, bonuses, rentals and royalties.

NOTE: The State of Louisiana does hereby reserve, and this lease shall be subject to, the imprescriptible right of surface use in the nature of a servitude in favor of the Department of Natural Resources, including its Offices and Commissions, for the sole purpose of implementing, constructing, servicing and maintaining approved coastal zone management and/or restoration projects. Utilization of any and all rights derived under this lease by the mineral lessee, its agents, successors or assigns,

shall not interfere with nor hinder the reasonable surface use by the Department of Natural Resources, its Offices or Commissions, as herein above reserved.

Applicant: C.J. HALEY

Bidder	Cash Payment	Price/Acre	Rental	Oil	Gas	Other



TRACT 37549 - Portion of Block 73, Chandeleur Sound Area, and Block 1, Main Pass Area, Revised, St. Bernard Parish, Louisiana

All of the lands now or formerly constituting the beds and bottoms of all water bodies of every nature and description the title of which vests in the State of Louisiana, together with all islands arising therein and other lands formed by accretion or by reliction, where allowed by law, excepting tax adjudicated lands, and not presently under mineral lease on July 13, 2005, situated in St. Bernard Parish, Louisiana, and more particularly described as follows: Beginning at the Southwest corner of State Lease No. 18465 having Coordinates of X = 2,574,718.00 and Y = 389,233.00; thence East 5,623.23 feet on the South line of said State Lease No. 18465 to its Southeast corner and a point on the Western boundary of State Lease No. 18056 having Coordinates of X = 2,580,341.23 and Y = 389,233.00; thence South 26 degrees 37 minutes 52 seconds East 1,770.84 feet on the West line of said State Lease No. 18056 to its Southern corner and a point on the boundary of State Lease No. 18041 having Coordinates of X = 2,581,135.00 and Y = 387,650.03; thence along the boundary of said State Lease No. 18041 the following courses: South 01 degrees 48 minutes 04 seconds East 1,620.83 feet and East 2,875.56 feet to the Northwest corner of State Lease No. 18042 having Coordinates of X = 2,584,061.50 and Y = 386,030.00; thence South 1,708.58 feet on the West line of said State Lease No. 18042 to its Southwest corner and a point on the boundary of State Lease No. 15959, as amended, having Coordinates of X = 2,584,061.50 and Y = 384,321.41; thence along the boundary of said State Lease No. 15959 the following courses: South 68 degrees 49 minutes 42 seconds West 745.13 feet, South 74 degrees 53 minutes 16 seconds West 604.96 feet, South 81 degrees 43 minutes 56 seconds West 605.36 feet, and South 81 degrees 46 minutes 12 seconds West 249.76 feet to the Northeast corner of State Lease No. 17109, as amended, having Coordinates of X = 2,581,936.36 and Y = 383,771.78; thence along the boundary of said State Lease No. 17109 the following courses: South 81 degrees 46 minutes 12 seconds West 748.94 feet and South 76 degrees 24 minutes 57 seconds East 489.45 feet to its Southeast corner and a point on the boundary of said State Lease No. 15959 having Coordinates of X = 2,581,670.89 and Y = 383,549.61; thence along the boundary of said State Lease No. 15959 the following courses: South 76 degrees 24 minutes 57 seconds East 501.55 feet, South 73 degrees 26 minutes 52 seconds East 299.06 feet, South 61 degrees 47 minutes 44 seconds East 108.65 feet, South 37 degrees 16 minutes 32 seconds East 105.11 feet, South 19 degrees 12 minutes 46 seconds East 116.02 feet, South 08 degrees 17 minutes 28 seconds East 100.14 feet, South 08 degrees 34 minutes 50 seconds West 212.80 feet, South 15 degrees 31 minutes 20 seconds West 1,012.40 feet, and South 11 degrees 08 minutes 02 seconds West 496.42 feet to a point on the North line of State Lease No. 17619 having Coordinates of X = 2,582,258.57 and Y = 381,330.00; thence along the boundary of said State Lease No. 17619 the following courses: West 1,608.57 feet and South 894.00 feet to a point having Coordinates of X = 2,580,650.00 and Y = 380,436.00; thence West 5,932.00 feet to a point having Coordinates of X = 2,574,718.00 and Y = 380,436.00; thence North 8,797.00 feet to the point of beginning,

containing approximately **1,416 acres**, all as more particularly outlined on a plat on file in the Office of Mineral Resources, Department of Natural Resources. All bearings, distances and coordinates are based on Louisiana Coordinate System of 1927, (North or South Zone), where applicable.

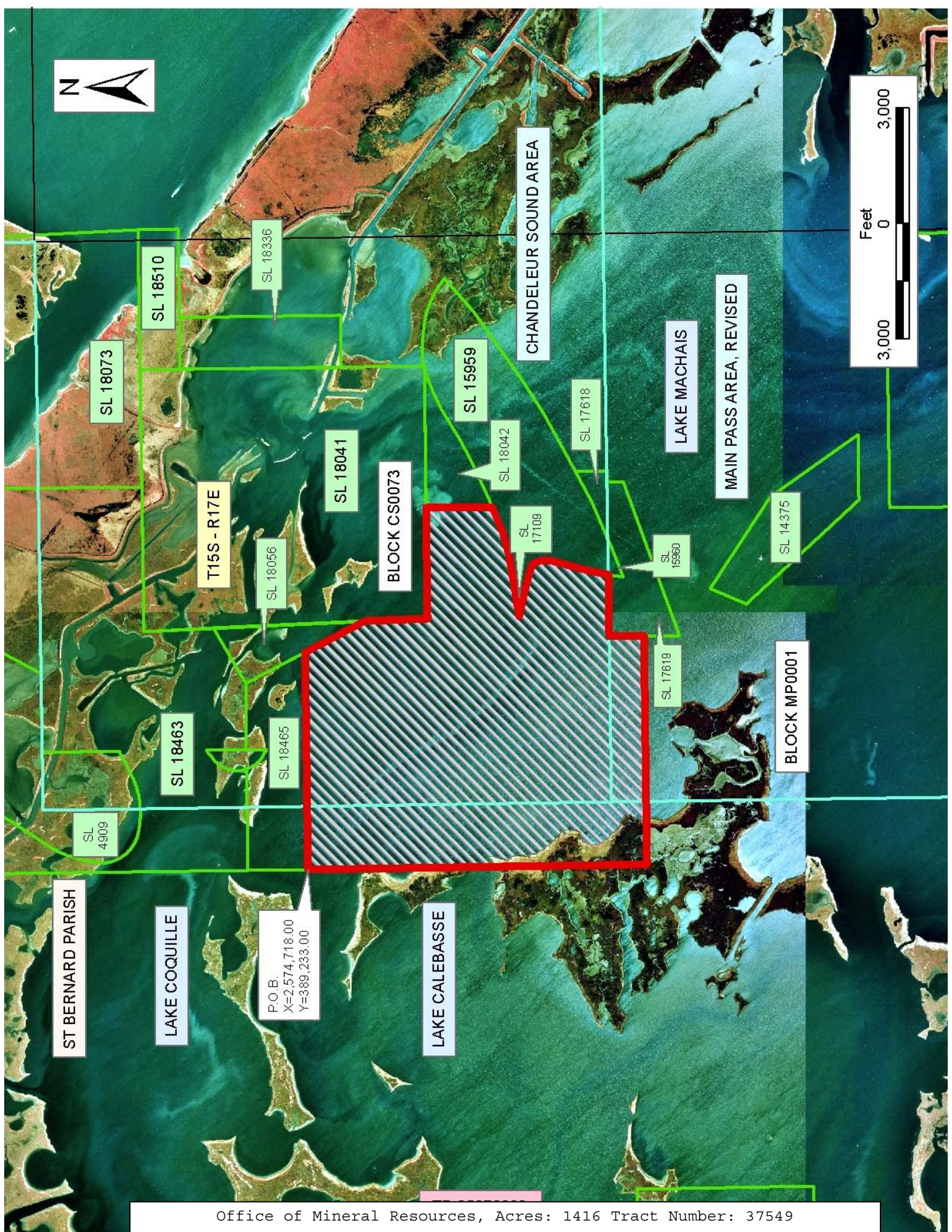
NOTE: The above description of the Tract nominated for lease has been provided and corrected, where required, exclusively by the nomination party. Any mineral lease selected from this Tract and awarded by the Louisiana State Mineral Board shall be without warranty of any kind, either express, implied, or statutory, including, but not limited to, the implied warranties of merchantability and fitness for a particular purpose. Should the mineral lease awarded by the Louisiana State Mineral Board be subsequently modified, cancelled or abrogated due to the existence of conflicting leases, operating agreements, private claims or other future obligations or conditions which may affect all or any portion of the leased Tract, it shall not relieve the Lessee of the obligation to pay any bonus due thereon to the Louisiana State Mineral Board, nor shall the Louisiana State Mineral Board be obligated to refund any consideration paid by the Lessor prior to such modification, cancellation, or abrogation, including, but not limited to, bonuses, rentals and royalties.

NOTE: The State of Louisiana does hereby reserve, and this lease shall be subject to, the imprescriptible right of surface use in the nature of a servitude in favor of the Department of Natural Resources, including its Offices and Commissions, for the sole purpose of implementing, constructing, servicing and maintaining approved coastal zone management and/or restoration projects. Utilization of any and all rights derived under this lease by the mineral lessee, its agents, successors or assigns, shall not interfere with nor hinder the reasonable surface use by the Department of Natural Resources, its Offices or Commissions, as herein above reserved.

NOTE: The Department of Wildlife and Fisheries has designated certain areas in the coastal waters of the State of Louisiana as Oyster Seed Bed Areas. The exact location of those Seed Bed Areas must be obtained from the Department of Wildlife and Fisheries and any work done under a mineral lease from the State of Louisiana may necessarily be conducted in conformity with the rules and regulations promulgated by the said Department of Wildlife and Fisheries for Oyster Seed Bed Areas.

Applicant: KARE-SUE ENERGY, INC.

Bidder	Cash Payment	Price/Acre	Rental	Oil	Gas	Other



ST BERNARD PARISH

LAKE COQUILLE

P.O.B.
X=2,574,718.00
Y=389,233.00

LAKE CALEBASSE

SL 18073

SL 18510

SL 18336

T15S - R17E

SL 18056

SL 18041

BLOCK CS0073

SL 15959

SL 18042

CHANDELEUR SOUND AREA

SL 17618

LAKE MACHAIS

MAIN PASS AREA, REVISED

SL 17109

SL 15960

SL 14375

SL 4909

SL 18463

SL 18465



SL 17619

BLOCK MP0001

TRACT 37550 - Cameron Parish, Louisiana

All of the lands now or formerly constituting the beds and bottoms of all water bodies of every nature and description the title of which vests in the State of Louisiana, together with all islands arising therein and other lands formed by accretion or by reliction, where allowed by law, excepting tax adjudicated lands, and not presently under mineral lease on July 13, 2005, situated in Cameron Parish, Louisiana, and more particularly described as follows: Beginning at a point on the Texas Louisiana Boundary having Coordinates of X = 1,199,801.04 and Y = 389,076.19; thence along the said Texas Louisiana Boundary the following courses: North 36 degrees 57 minutes 22 seconds West 1,024.67 feet to a point having Coordinates of X = 1,199,185.00 and Y = 389,895.00; North 20 degrees 24 minutes 01 seconds West 645.48 feet to a point having Coordinates of X = 1,198,960.00 and Y = 390,500.00; North 02 degrees 32 minutes 41 seconds East 900.89 feet to a point having Coordinates of X = 1,199,000.00 and Y = 391,400.00; North 10 degrees 56 minutes 02 seconds East 896.27 feet to a point having Coordinates of X = 1,199,170.00 and Y = 392,280.00; North 33 degrees 19 minutes 16 seconds West 1,938.72 feet to a point having Coordinates of X = 1,198,105.00 and Y = 393,900.00; North 36 degrees 50 minutes 12 seconds West 687.20 feet to a point having Coordinates of X = 1,197,693.00 and Y = 394,450.00; North 20 degrees 10 minutes 29 seconds West 1,864.39 feet to a point having Coordinates of X = 1,197,050.00 and Y = 396,200.00; North 26 degrees 22 minutes 52 seconds West 1,114.01 feet to a point having Coordinates of X = 1,196,555.00 and Y = 397,198.00; North 50 degrees 24 minutes 57 seconds West 1,093.83 feet to a point having Coordinates of X = 1,195,712.00 and Y = 397,895.00; and North 69 degrees 02 minutes 20 seconds West 602.59 feet to a point, said point also being the Southeast corner of State Lease No. 17462, having Coordinates of X = 1,195,149.29 and Y = 398,110.57; thence along the boundary of said State Lease No. 17462 the following courses: North 01 degrees 17 minutes 51 seconds East 4,433.47 feet to a point having Coordinates of X = 1,195,249.68 and Y = 402,542.90, North 88 degrees 41 minutes 09 seconds West 3,956.93 feet to a point having Coordinates of X = 1,191,293.79 and Y = 402,633.64, and South 01 degrees 17 minutes 51 seconds West 3,105.81 feet to Southwest corner, said corner also being a point on the said Texas Louisiana Boundary having Coordinates of X = 1,191,223.46 and Y = 399,528.63; thence along the said Texas Louisiana Boundary the following courses: North 72 degrees 32 minutes 27 seconds West 637.85 feet to a point having Coordinates of X = 1,190,615.00 and Y = 399,720.00; North 65 degrees 00 minutes 09 seconds West 899.24 feet to a point having Coordinates of X = 1,189,800.00 and Y = 400,100.00; North 59 degrees 33 minutes 13 seconds West 759.77 feet to a point having Coordinates of X = 1,189,145.00 and Y = 400,485.00; North 42 degrees 37 minutes 22 seconds West 1,159.24 feet to a point having Coordinates of X = 1,188,360.00 and Y = 401,338.00; North 12 degrees 45 minutes 31 seconds West 1,109.39 feet to a point having Coordinates of X = 1,188,115.00 and Y = 402,420.00; North 03 degrees 26 minutes 19 seconds West 1,167.10 feet to a point having Coordinates of X = 1,188,045.00 and Y = 403,585.00; North 04 degrees 59 minutes 53 seconds West 1,320.02 feet to a point having

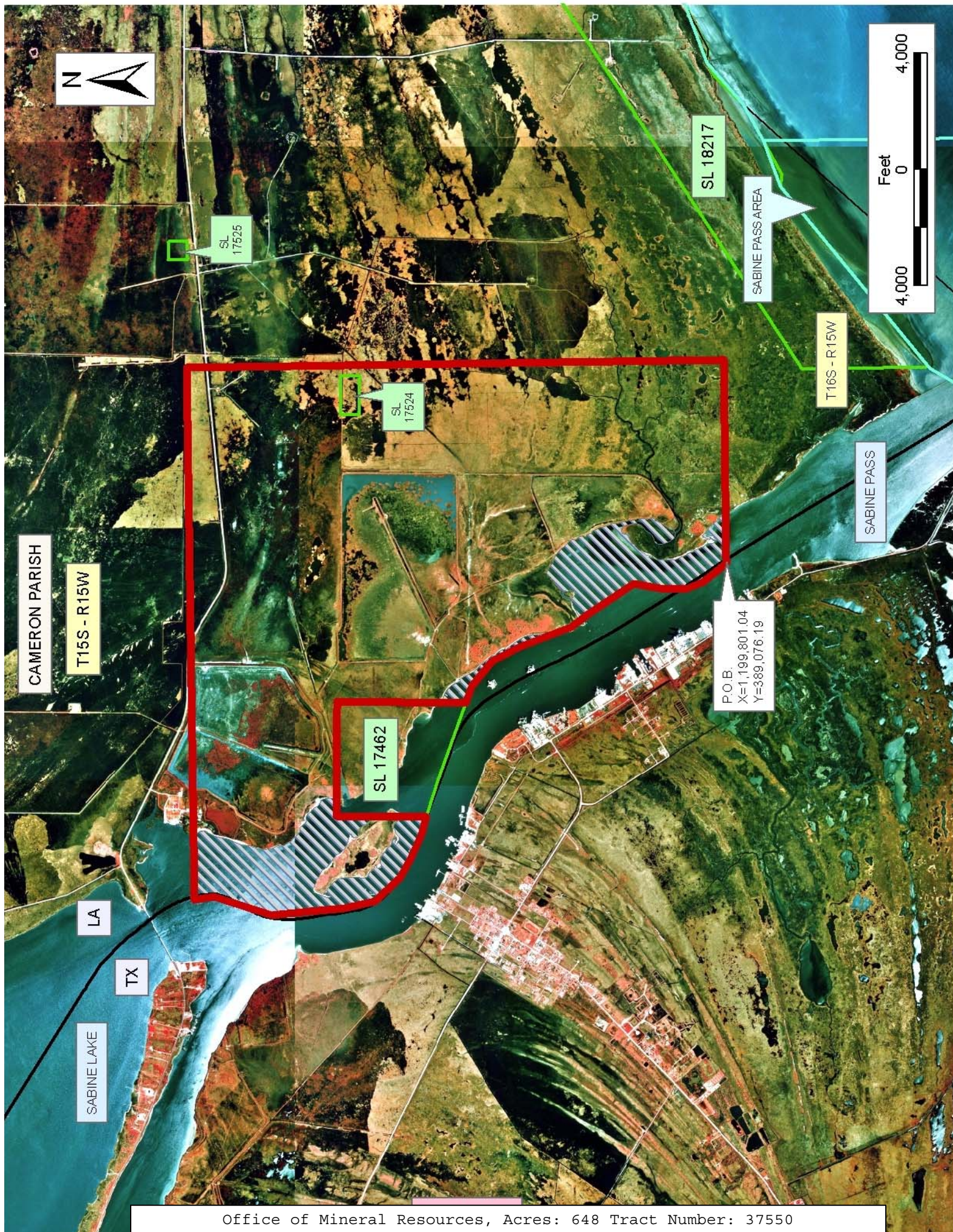
Coordinates of X = 1,187,930.00 and Y = 404,900.00; North 18 degrees 08 minutes 01 seconds East 2,104.52 feet to a point having Coordinates of X = 1,188,585.00 and Y = 406,900.00; and North 06 degrees 54 minutes 40 seconds West 660.99 feet to a point having Coordinates of X = 1,188,505.46 and Y = 407,556.19; thence East 18,332.91 feet to a point having Coordinates of X = 1,206,838.38 and Y = 407,556.19; thence South 18,480.00 feet to a point having Coordinates of X = 1,206,838.38 and Y = 389,076.19; thence West 7,037.34 feet to the point of beginning, containing approximately **648 acres, LESS AND EXCEPT** that portion thereof, if any, located West of the boundary line between the States of Texas and Louisiana as determined by the report of the Special Master and adjudicated by the Supreme Court of the United States in litigation styled **Texas v. Louisiana, et al No. 36 Original**, or as otherwise approved by said court, all as more particularly outlined on a plat on file in the Office of Mineral Resources, Department of Natural Resources. All bearings, distances and coordinates are based on Louisiana Coordinate System of 1927, (North or South Zone), where applicable.

NOTE: The above description of the Tract nominated for lease has been provided and corrected, where required, exclusively by the nomination party. Any mineral lease selected from this Tract and awarded by the Louisiana State Mineral Board shall be without warranty of any kind, either express, implied, or statutory, including, but not limited to, the implied warranties of merchantability and fitness for a particular purpose. Should the mineral lease awarded by the Louisiana State Mineral Board be subsequently modified, cancelled or abrogated due to the existence of conflicting leases, operating agreements, private claims or other future obligations or conditions which may affect all or any portion of the leased Tract, it shall not relieve the Lessee of the obligation to pay any bonus due thereon to the Louisiana State Mineral Board, nor shall the Louisiana State Mineral Board be obligated to refund any consideration paid by the Lessor prior to such modification, cancellation, or abrogation, including, but not limited to, bonuses, rentals and royalties.

NOTE: The State of Louisiana does hereby reserve, and this lease shall be subject to, the imprescriptible right of surface use in the nature of a servitude in favor of the Department of Natural Resources, including its Offices and Commissions, for the sole purpose of implementing, constructing, servicing and maintaining approved coastal zone management and/or restoration projects. Utilization of any and all rights derived under this lease by the mineral lessee, its agents, successors or assigns, shall not interfere with nor hinder the reasonable surface use by the Department of Natural Resources, its Offices or Commissions, as herein above reserved.

Applicant: FLEETWOOD RESOURCES, INC.

Bidder	Cash Payment	Price/Acre	Rental	Oil	Gas	Other



Office of Mineral Resources, Acres: 648 Tract Number: 37550