

**TRACT 37531 - Iberia Parish, Louisiana**

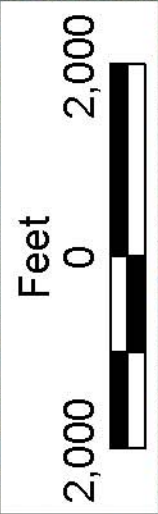
All of the lands now or formerly constituting the beds and bottoms of all water bodies of every nature and description the title of which vests in the State of Louisiana, together with all islands arising therein and other lands formed by accretion or by reliction, where allowed by law, excepting tax adjudicated lands, and not presently under mineral lease on July 13, 2005, situated in Iberia Parish, Louisiana, and more particularly described as follows: Beginning at a point having Coordinates of X = 1,970,534.42 and Y = 501,033.03; thence East 10,510.93 feet to a point having Coordinates of X = 1,981,045.35 and Y = 501,033.03; thence South 01 degrees 25 minutes 08 seconds East approximately 2,530 feet to a point on the North line of State Lease No. 3273; thence along the boundaries of said State Lease No. 3273 the following: Westerly, Southerly, Westerly, Southerly and Westerly to its most Southern Northwest corner; thence continue Westerly approximately 6,653 feet to a point having Coordinates of X = 1,970,534.42 and Y = 490,499.68; thence North 10,533.35 feet to the point of beginning, containing approximately **51 acres**, all as more particularly outlined on a plat on file in the Office of Mineral Resources, Department of Natural Resources. All bearings, distances and coordinates are based on Louisiana Coordinate System of 1927, (North or South Zone), where applicable.

NOTE: The above description of the Tract nominated for lease has been provided and corrected, where required, exclusively by the nomination party. Any mineral lease selected from this Tract and awarded by the Louisiana State Mineral Board shall be without warranty of any kind, either express, implied, or statutory, including, but not limited to, the implied warranties of merchantability and fitness for a particular purpose. Should the mineral lease awarded by the Louisiana State Mineral Board be subsequently modified, cancelled or abrogated due to the existence of conflicting leases, operating agreements, private claims or other future obligations or conditions which may affect all or any portion of the leased Tract, it shall not relieve the Lessee of the obligation to pay any bonus due thereon to the Louisiana State Mineral Board, nor shall the Louisiana State Mineral Board be obligated to refund any consideration paid by the Lessor prior to such modification, cancellation, or abrogation, including, but not limited to, bonuses, rentals and royalties.

NOTE: The State of Louisiana does hereby reserve, and this lease shall be subject to, the imprescriptible right of surface use in the nature of a servitude in favor of the Department of Natural Resources, including its Offices and Commissions, for the sole purpose of implementing, constructing, servicing and maintaining approved coastal zone management and/or restoration projects. Utilization of any and all rights derived under this lease by the mineral lessee, its agents, successors or assigns, shall not interfere with nor hinder the reasonable surface use by the Department of Natural Resources, its Offices or Commissions, as herein above reserved.

Applicant: CYPRESS ENERGY CORPORATION

Bidder	Cash Payment	Price/Acre	Rental	Oil	Gas	Other



T12S - R11E

SL 3273

IBERIA PARISH

P.O.B.  
X=1,970,534.42  
Y=501,033.03

T12S - R10E

BAYOU COWAN

SMITH BAYOU

**TRACT 37532 - St. Bernard Parish, Louisiana**

All of the lands now or formerly constituting the beds and bottoms of all water bodies of every nature and description the title of which vests in the State of Louisiana, together with all islands arising therein and other lands formed by accretion or by reliction, where allowed by law, excepting tax adjudicated lands, and not presently under mineral lease on July 13, 2005, situated in St. Bernard Parish, Louisiana, and more particularly described as follows: Beginning at a point on the South boundary of State Lease No. 18157, also being a point on the Biloxi Wildlife Management Area having Coordinates of X = 2,593,675.85 and Y = 491,169.27; thence along the boundary of said State Lease No. 18157 and the said Biloxi Wildlife Management Area the following courses and distances: South 00 degrees 49 minutes 40 seconds East 1,643.66 feet and South 00 degrees 20 minutes 35 seconds East 1,060.72 feet to a point on the boundary of the said Biloxi Wildlife Management Area, also being the Northeast corner of State Lease No. 17951 having Coordinates of X = 2,593,705.94 and Y = 488,465.08; thence along the boundary of said State Lease No. 17951 the following courses and distances: West 5,254.68 feet and South 2,999.96 feet to the Southwest corner of said State Lease No. 17951, and the Northwest corner of State Lease No. 17976, also being a point on the boundary of the said Biloxi Wildlife Management Area having Coordinates of X = 2,588,451.26 and Y = 485,465.12; thence along the boundary of said State Lease No. 17976, also along the boundary of the said Biloxi Wildlife Management Area the following courses and distances: South 90.89 feet and South 01 degrees 43 minutes 35 seconds East 908.58 feet to the Southwest corner of said State Lease No. 17976, and the Northwest corner of State Lease No. 18273, also being a point on the said Biloxi Wildlife Management Area having Coordinates of X = 2,588,478.63 and Y = 484,466.06; thence along the boundary of said State Lease No. 18273, also along the boundary of the said Biloxi Wildlife Management Area the following courses and distances: South 01 degrees 53 minutes 34 seconds East 0.61 feet, South 01 degrees 53 minutes 34 seconds East 1,316.57 feet and South 01 degrees 55 minutes 23 seconds East 318.24 feet to the Southwest corner of said State Lease No. 18273, also being a point on the said Biloxi Wildlife Management Area having Coordinates of X = 2,588,532.82 and Y = 482,831.54; thence along the boundary of the said Biloxi Wildlife Management Area the following courses and distances: South 88 degrees 27 minutes 29 seconds West 5,234.79 feet, North 01 degrees 01 minutes 18 seconds West 2,596.41 feet and North 02 degrees 21 minutes 38 seconds West 5,416.34 feet to a point on the boundary of the said Biloxi Wildlife Management Area having Coordinates of X = 2,583,030.56 and Y = 490,698.43; thence North 02 degrees 18 minutes 30 seconds West 471.23 feet to a point having Coordinates of X = 2,583,011.58 and Y = 491,169.27; thence East 9,553.02 feet to the Southwest corner of said State Lease No. 18157 having Coordinates of X = 2,592,564.60 and Y = 491,169.27; thence East 1,111.25 feet along the South line of said State Lease No. 18157 to the point of beginning, **LESS AND EXCEPT** any portion of the Biloxi Wildlife Management Area that may lie within the above described tract, containing approximately **674 acres**, all as more particularly outlined on a plat on

file in the Office of Mineral Resources, Department of Natural Resources. All bearings, distances and coordinates are based on Louisiana Coordinate System of 1927, (North or South Zone), where applicable.

NOTE: The above description of the Tract nominated for lease has been provided and corrected, where required, exclusively by the nomination party. Any mineral lease selected from this Tract and awarded by the Louisiana State Mineral Board shall be without warranty of any kind, either express, implied, or statutory, including, but not limited to, the implied warranties of merchantability and fitness for a particular purpose. Should the mineral lease awarded by the Louisiana State Mineral Board be subsequently modified, cancelled or abrogated due to the existence of conflicting leases, operating agreements, private claims or other future obligations or conditions which may affect all or any portion of the leased Tract, it shall not relieve the Lessee of the obligation to pay any bonus due thereon to the Louisiana State Mineral Board, nor shall the Louisiana State Mineral Board be obligated to refund any consideration paid by the Lessor prior to such modification, cancellation, or abrogation, including, but not limited to, bonuses, rentals and royalties.

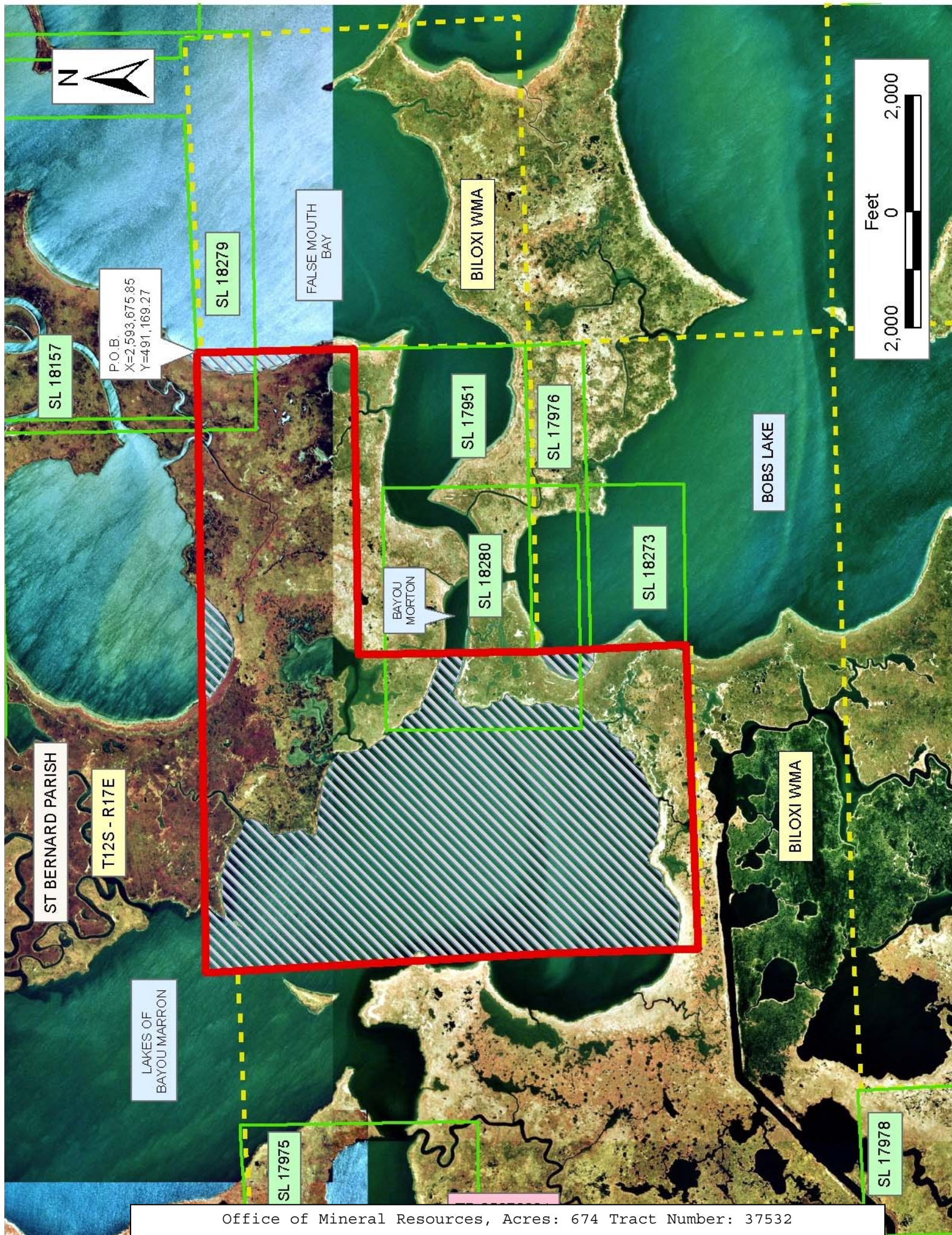
NOTE: The Office of Mineral Resources will require a minimum bonus of \$230 per acre and a minimum royalty of 23%.

NOTE: The State of Louisiana does hereby reserve, and this lease shall be subject to, the imprescriptible right of surface use in the nature of a servitude in favor of the Department of Natural Resources, including its Offices and Commissions, for the sole purpose of implementing, constructing, servicing and maintaining approved coastal zone management and/or restoration projects. Utilization of any and all rights derived under this lease by the mineral lessee, its agents, successors or assigns, shall not interfere with nor hinder the reasonable surface use by the Department of Natural Resources, its Offices or Commissions, as herein above reserved.

NOTE: The Department of Wildlife and Fisheries has designated certain areas in the coastal waters of the State of Louisiana as Oyster Seed Bed Areas. The exact location of those Seed Bed Areas must be obtained from the Department of Wildlife and Fisheries and any work done under a mineral lease from the State of Louisiana may necessarily be conducted in conformity with the rules and regulations promulgated by the said Department of Wildlife and Fisheries for Oyster Seed Bed Areas.

Applicant: KARE-SUE ENERGY, INC.

Bidder	Cash Payment	Price/Acre	Rental	Oil	Gas	Other



P.O.B.  
X=2,593,675.85  
Y=491,169.27

SL 18157

SL 18279

FALSE MOUTH BAY

BILOXI WMA

SL 17951

SL 17976

BOBS LAKE

BAYOU MORTON

SL 18280

SL 18273

ST BERNARD PARISH

T12S - R17E

LAKES OF BAYOU MARRON

SL 17975

BILOXI WMA

SL 17978

**TRACT 37533 - St. Bernard Parish, Louisiana**

All of the lands now or formerly constituting the beds and bottoms of all water bodies of every nature and description the title of which vests in the State of Louisiana, together with all islands arising therein and other lands formed by accretion or by reliction, where allowed by law, excepting tax adjudicated lands, and not presently under mineral lease on July 13, 2005, situated in St. Bernard Parish, Louisiana, and more particularly described as follows: Beginning at a point having Coordinates of X = 2,607,250.00 and Y = 480,332.67; thence North 8,157.00 feet to a point having Coordinates of X = 2,607,250.00 and Y = 488,489.67; thence East 13,350.00 feet to a point having Coordinates of X = 2,620,600.00 and Y = 488,489.67; thence South 8,157.00 feet to a point having Coordinates of X = 2,620,600.00 and Y = 480,332.67; thence West 13,350.00 feet to the point of beginning, containing approximately **2,499.91 acres**, all as more particularly outlined on a plat on file in the Office of Mineral Resources, Department of Natural Resources. All bearings, distances and coordinates are based on Louisiana Coordinate System of 1927, (North or South Zone), where applicable.

NOTE: The above description of the Tract nominated for lease has been provided and corrected, where required, exclusively by the nomination party. Any mineral lease selected from this Tract and awarded by the Louisiana State Mineral Board shall be without warranty of any kind, either express, implied, or statutory, including, but not limited to, the implied warranties of merchantability and fitness for a particular purpose. Should the mineral lease awarded by the Louisiana State Mineral Board be subsequently modified, cancelled or abrogated due to the existence of conflicting leases, operating agreements, private claims or other future obligations or conditions which may affect all or any portion of the leased Tract, it shall not relieve the Lessee of the obligation to pay any bonus due thereon to the Louisiana State Mineral Board, nor shall the Louisiana State Mineral Board be obligated to refund any consideration paid by the Lessor prior to such modification, cancellation, or abrogation, including, but not limited to, bonuses, rentals and royalties.

NOTE: The Office of Mineral Resources will require a minimum bonus of \$230 per acre and a minimum royalty of 23%.

NOTE: The State of Louisiana does hereby reserve, and this lease shall be subject to, the imprescriptible right of surface use in the nature of a servitude in favor of the Department of Natural Resources, including its Offices and Commissions, for the sole purpose of implementing, constructing, servicing and maintaining approved coastal zone management and/or restoration projects. Utilization of any and all rights derived under this lease by the mineral lessee, its agents, successors or assigns, shall not interfere with nor hinder the reasonable surface use by the Department of Natural Resources, its Offices or Commissions, as herein above reserved.



NOTE: The Department of Wildlife and Fisheries has designated certain areas in the coastal waters of the State of Louisiana as Oyster Seed Bed Areas. The exact location of those Seed Bed Areas must be obtained from the Department of Wildlife and Fisheries and any work done under a mineral lease from the State of Louisiana may necessarily be conducted in conformity with the rules and regulations promulgated by the said Department of Wildlife and Fisheries for Oyster Seed Bed Areas.

Applicant: KARE-SUE ENERGY, INC.

Bidder	Cash Payment	Price/Acre	Rental	Oil	Gas	Other



ST BERNARD PARISH

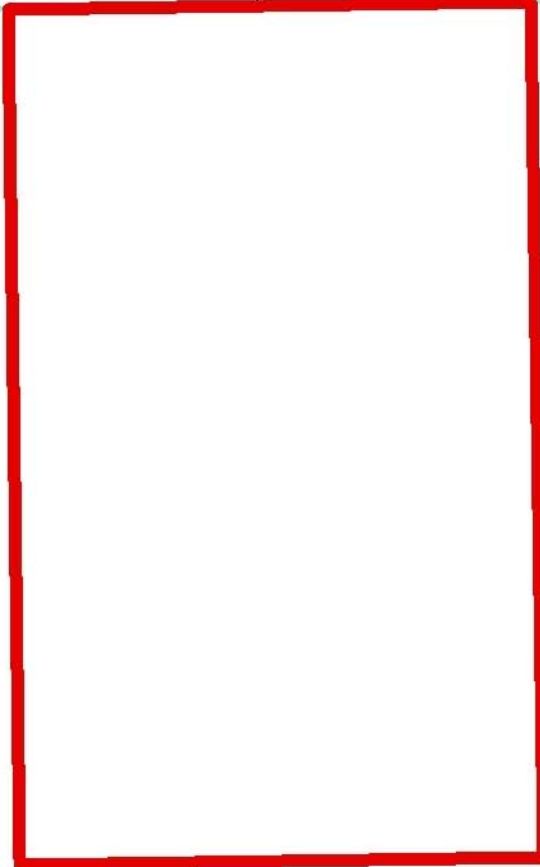
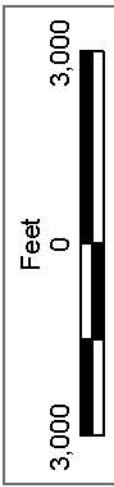
T12S - R18E

BLOCK CX0046

CHANDELEUR SOUND AREA ADDITION, REVISED

BLOCK CX0047

T13S - R18E



BAY BOUDREAU

SL 18459

P.O.B.  
X=2,607,250.00  
Y=480,332.67

SL 18457

SL 18458

FALSE MOUTH BAY

SL 17954

**TRACT 37534 - Cameron Parish, Louisiana**

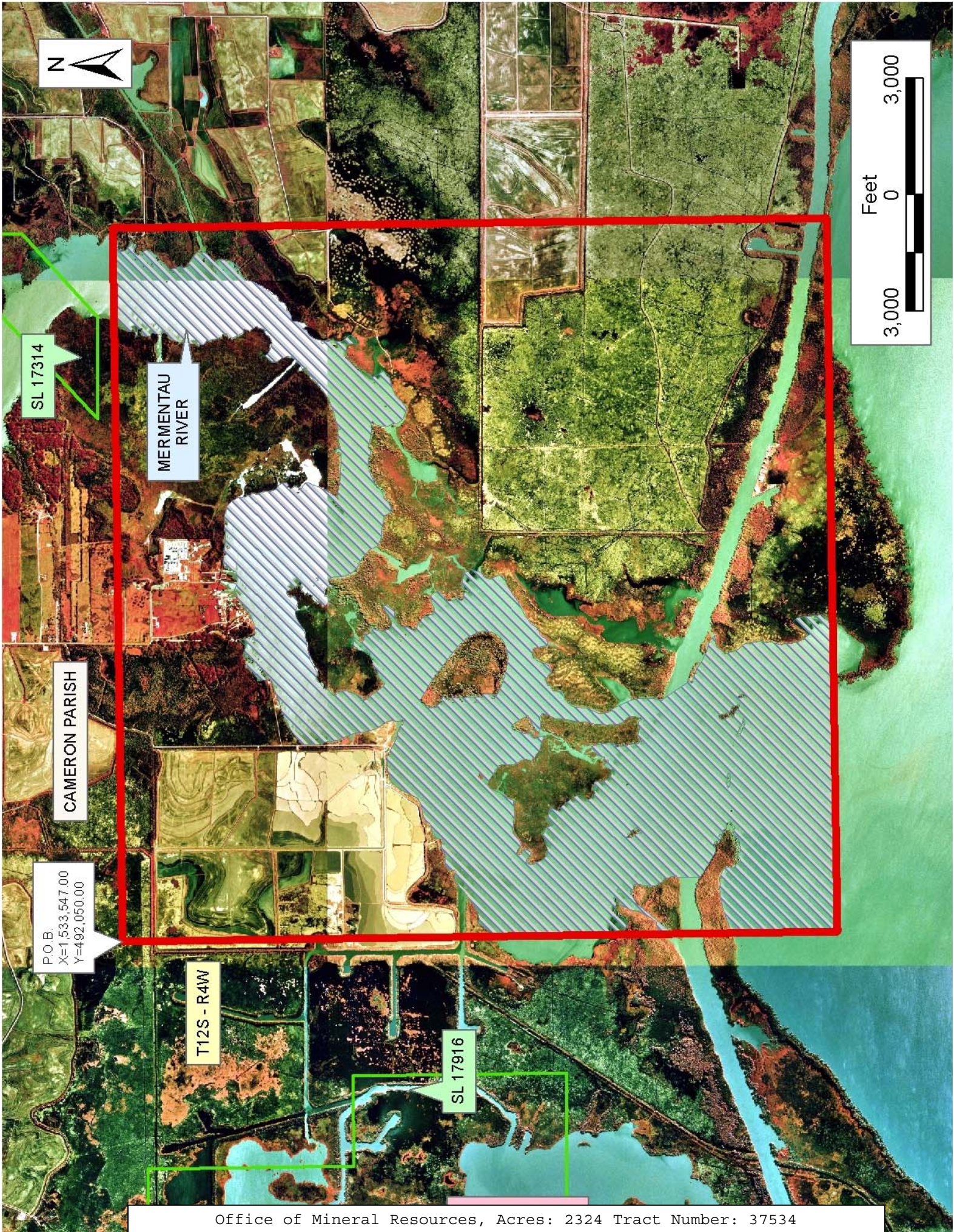
All of the lands now or formerly constituting the beds and bottoms of all water bodies of every nature and description the title of which vests in the State of Louisiana, together with all islands arising therein and other lands formed by accretion or by reliction, where allowed by law, excepting tax adjudicated lands, and not presently under mineral lease on July 13, 2005, situated in Cameron Parish, Louisiana, and more particularly described as follows: Beginning at a point having Coordinates of X = 1,533,547.00 and Y = 492,050.00; thence East 18,400.00 feet to a point having Coordinates of X = 1,551,947.00 and Y = 492,050.00; thence South 18,400.00 feet to a point having Coordinates of X = 1,551,947.00 and Y = 473,650.00; thence West 18,400.00 feet to a point having Coordinates of X = 1,533,547.00 and Y = 473,650.00; thence North 18,400.00 feet to the point of beginning containing approximately **2324 acres**, all as more particularly outlined on a plat on file in the Office of Mineral Resources, Department of Natural Resources. All bearings, distances and coordinates are based on Louisiana Coordinate System of 1927, (North or South Zone), where applicable.

NOTE: The above description of the Tract nominated for lease has been provided and corrected, where required, exclusively by the nomination party. Any mineral lease selected from this Tract and awarded by the Louisiana State Mineral Board shall be without warranty of any kind, either express, implied, or statutory, including, but not limited to, the implied warranties of merchantability and fitness for a particular purpose. Should the mineral lease awarded by the Louisiana State Mineral Board be subsequently modified, cancelled or abrogated due to the existence of conflicting leases, operating agreements, private claims or other future obligations or conditions which may affect all or any portion of the leased Tract, it shall not relieve the Lessee of the obligation to pay any bonus due thereon to the Louisiana State Mineral Board, nor shall the Louisiana State Mineral Board be obligated to refund any consideration paid by the Lessor prior to such modification, cancellation, or abrogation, including, but not limited to, bonuses, rentals and royalties.

NOTE: The State of Louisiana does hereby reserve, and this lease shall be subject to, the imprescriptible right of surface use in the nature of a servitude in favor of the Department of Natural Resources, including its Offices and Commissions, for the sole purpose of implementing, constructing, servicing and maintaining approved coastal zone management and/or restoration projects. Utilization of any and all rights derived under this lease by the mineral lessee, its agents, successors or assigns, shall not interfere with nor hinder the reasonable surface use by the Department of Natural Resources, its Offices or Commissions, as herein above reserved.

Applicant: CHRIS ROY

Bidder	Cash Payment	Price/Acre	Rental	Oil	Gas	Other



**TRACT 37535 - St. Charles and St. John The Baptist Parishes, Louisiana**

All of the lands now or formerly constituting the beds and bottoms of all water bodies of every nature and description the title of which vests in the State of Louisiana, together with all islands arising therein and other lands formed by accretion or by reliction, where allowed by law, excepting tax adjudicated lands, and not presently under mineral lease on July 13, 2005, situated in St. Charles and St. John The Baptist Parishes, Louisiana, and more particularly described as follows: Beginning at a point having Coordinates of X = 2,248,295.00 and Y = 463,478.00; thence North 2,202.00 feet to the Southeast corner of State Lease No. 17886 having Coordinates of X = 2,248,295.00 and Y = 465,680.00; thence North 7,490.00 feet on the East line of said State Lease No. 17886 to a point having Coordinates of X = 2,248,295.00 and Y = 473,170.00; thence East 11,095.00 feet to a point having Coordinates of X = 2,259,390.00 and Y = 473,170.00; thence South 9,692.00 feet to a point having Coordinates of X = 2,259,390.00 and Y = 463,478.00; thence West 11,095.00 feet to the point of beginning, containing approximately **225 acres**, all as more particularly outlined on a plat on file in the Office of Mineral Resources, Department of Natural Resources. All bearings, distances and coordinates are based on Louisiana Coordinate System of 1927, (North or South Zone), where applicable.

NOTE: The above description of the Tract nominated for lease has been provided and corrected, where required, exclusively by the nomination party. Any mineral lease selected from this Tract and awarded by the Louisiana State Mineral Board shall be without warranty of any kind, either express, implied, or statutory, including, but not limited to, the implied warranties of merchantability and fitness for a particular purpose. Should the mineral lease awarded by the Louisiana State Mineral Board be subsequently modified, cancelled or abrogated due to the existence of conflicting leases, operating agreements, private claims or other future obligations or conditions which may affect all or any portion of the leased Tract, it shall not relieve the Lessee of the obligation to pay any bonus due thereon to the Louisiana State Mineral Board, nor shall the Louisiana State Mineral Board be obligated to refund any consideration paid by the Lessor prior to such modification, cancellation, or abrogation, including, but not limited to, bonuses, rentals and royalties.

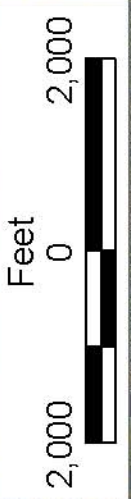
NOTE: The State of Louisiana does hereby reserve, and this lease shall be subject to, the imprescriptible right of surface use in the nature of a servitude in favor of the Department of Natural Resources, including its Offices and Commissions, for the sole purpose of implementing, constructing, servicing and maintaining approved coastal zone management and/or restoration projects. Utilization of any and all rights derived under this lease by the mineral lessee, its agents, successors or assigns, shall not interfere with nor hinder the reasonable surface use by the Department of Natural Resources, its Offices or Commissions, as herein above reserved.

Applicant: DOYLE LAND SERVICES, INC.

Bidder	Cash Payment	Price/Acre	Rental	Oil	Gas	Other



T13S - R19E



ST CHARLES PARISH



ST JOHN THE BAPTIST PARISH

T13S - R19E

P.O.B.  
X=2,248,295.00  
Y=463,478.00

SL 17886

LAC DES ALLEMANDS



**TRACT 37536 - Cameron Parish, Louisiana**

All of the lands now or formerly constituting the beds and bottoms of all water bodies of every nature and description the title of which vests in the State of Louisiana, together with all islands arising therein and other lands formed by accretion or by reliction, where allowed by law, excepting tax adjudicated lands, and not presently under mineral lease on July 13, 2005, situated in Cameron Parish, Louisiana, and more particularly described as follows: Beginning a point on the East line of State Lease No. 7555 as amended, and the Southwest corner of State Lease No. 17807, having Coordinates of X = 1,223,381.79 and Y = 485,511.52; thence East 5,479.06 feet along the south line of said State Lease No. 17807 to a point having Coordinates of X = 1,228,860.85 and Y = 485,511.52, also being the most western Northwest corner of State Lease No. 17915; thence South 6,379.85 feet along the west line of said State Lease No. 17915 to its Southwest corner; thence continue South 1,131.67 feet to a point having Coordinates of X = 1,228,860.85 and Y = 478,000.00; thence West 4,860.85 feet to the Southeast corner of State Lease No. 17701 having Coordinates of X = 1,224,000.00 and Y = 478,000.00; thence North 2,263.34 feet along the East line of said State Lease No. 17701 to its Northeast corner and a point on the south line of said State Lease No. 7555, having Coordinates of X = 1,224,000.00 and Y = 480,263.34; thence along the boundary of said State Lease the following: North 56 degrees 18 minutes 36 seconds East 480.74 feet, North 46 degree 00 minutes 18 seconds East 403.11 feet, North 32 degrees 04 minutes 56 seconds East 395.38 feet, North 15 degrees 43 minutes 55 seconds West 368.82 feet, North 29 degrees 03 minutes 17 seconds West 514.78 feet, North 36 degrees 52 minutes 12 seconds West 500.00 feet, North 49 degrees 45 minutes 49 seconds West 510.88 feet, North 47 degrees 45 minutes 50 seconds West 513.26 feet, North 43 degrees 01 minutes 30 seconds West 512.96 feet, North 22 degrees 50 minutes 01 West 206.15 feet, North 14 degrees 44 minutes 37 seconds West 196.47 feet, North 220.00 feet, North 07 degrees 58 minutes 11 seconds East 504.88 feet and North 17 degrees 07 minutes 54 seconds East 1,058.48 feet to the point of beginning, containing approximately **818 acres**, all as more particularly outlined on a plat on file in the Office of Mineral Resources, Department of Natural Resources. All bearings, distances and coordinates are based on Louisiana Coordinate System of 1927, (North or South Zone), where applicable.

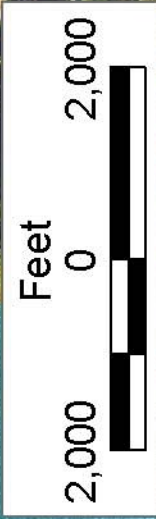
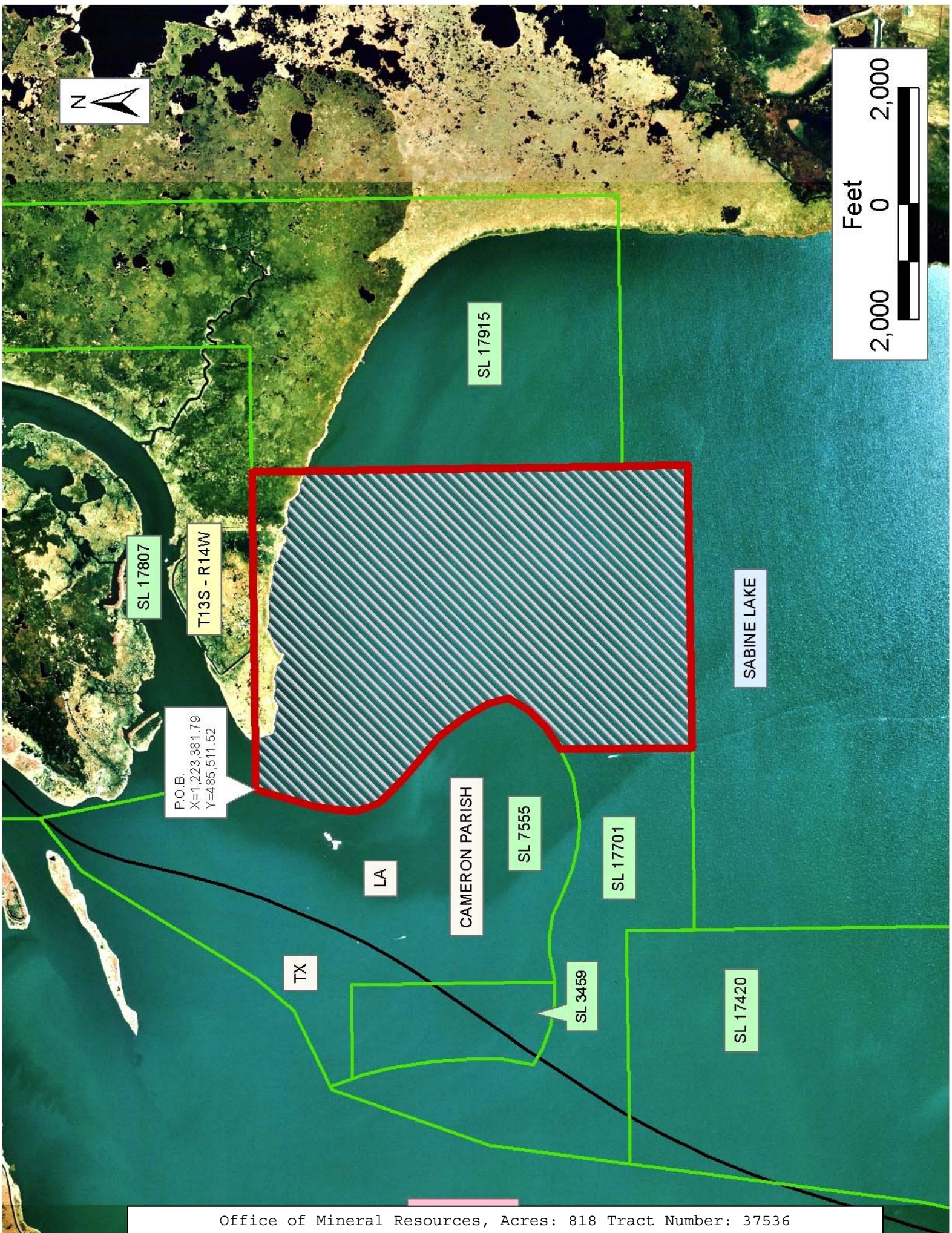
NOTE: The above description of the Tract nominated for lease has been provided and corrected, where required, exclusively by the nomination party. Any mineral lease selected from this Tract and awarded by the Louisiana State Mineral Board shall be without warranty of any kind, either express, implied, or statutory, including, but not limited to, the implied warranties of merchantability and fitness for a particular purpose. Should the mineral lease awarded by the Louisiana State Mineral Board be subsequently modified, cancelled or abrogated due to the existence of conflicting leases, operating agreements, private claims or other future obligations or conditions which may affect all or any portion of the leased Tract, it shall not relieve the Lessee of the obligation to

pay any bonus due thereon to the Louisiana State Mineral Board, nor shall the Louisiana State Mineral Board be obligated to refund any consideration paid by the Lessor prior to such modification, cancellation, or abrogation, including, but not limited to, bonuses, rentals and royalties.

NOTE: The State of Louisiana does hereby reserve, and this lease shall be subject to, the imprescriptible right of surface use in the nature of a servitude in favor of the Department of Natural Resources, including its Offices and Commissions, for the sole purpose of implementing, constructing, servicing and maintaining approved coastal zone management and/or restoration projects. Utilization of any and all rights derived under this lease by the mineral lessee, its agents, successors or assigns, shall not interfere with nor hinder the reasonable surface use by the Department of Natural Resources, its Offices or Commissions, as herein above reserved.

Applicant: CUMMINS LAND SERVICES

Bidder	Cash Payment	Price/Acre	Rental	Oil	Gas	Other



SL 17807

T13S - R14W

SL 17915

SABINE LAKE

P.O.B.  
X=1,223,381.79  
Y=486,511.52

LA

CAMERON PARISH

SL 7555

SL 17701

TX

SL 3459

SL 17420

**TRACT 37537 - Portion of Blocks 2, and 21, Chandeleur Sound Area, St. Bernard Parish, Louisiana**

All of the lands now or formerly constituting the beds and bottoms of all water bodies of every nature and description the title of which vests in the State of Louisiana, together with all islands arising therein and other lands formed by accretion or by reliction, where allowed by law, excepting tax adjudicated lands, and not presently under mineral lease on July 13, 2005, situated in St. Bernard Parish, Louisiana, and more particularly described as follows: Beginning at a point within Block 21, Chandeleur Sound Area, having Coordinates of X = 2,647,842.00 and Y = 450,552.00; thence West 10,262.00 feet to a point having Coordinates of 2,637,580.00 and Y = 450,552.00; thence North 01 degrees 24 minutes 09 seconds West 10,705.21 feet to a point within Block 2, Chandeleur Sound Area, having Coordinates of X = 2,637,318.00 and Y = 461,254.00; thence East 10,174.00 feet to a point having Coordinates of X = 2,647,492.00 and Y = 461,254.00; thence South 01 degrees 52 minutes 23 seconds East 10,707.72 feet to the point of beginning, containing approximately **2,279 acres**, all as more particularly outlined on a plat on file in the Office of Mineral Resources, Department of Natural Resources. All bearings, distances and coordinates are based on Louisiana Coordinate System of 1927, (North or South Zone), where applicable.

NOTE: The above description of the Tract nominated for lease has been provided and corrected, where required, exclusively by the nomination party. Any mineral lease selected from this Tract and awarded by the Louisiana State Mineral Board shall be without warranty of any kind, either express, implied, or statutory, including, but not limited to, the implied warranties of merchantability and fitness for a particular purpose. Should the mineral lease awarded by the Louisiana State Mineral Board be subsequently modified, cancelled or abrogated due to the existence of conflicting leases, operating agreements, private claims or other future obligations or conditions which may affect all or any portion of the leased Tract, it shall not relieve the Lessee of the obligation to pay any bonus due thereon to the Louisiana State Mineral Board, nor shall the Louisiana State Mineral Board be obligated to refund any consideration paid by the Lessor prior to such modification, cancellation, or abrogation, including, but not limited to, bonuses, rentals and royalties.

NOTE: The Office of Mineral Resources will require a minimum bonus of \$230 per acre and a minimum royalty of 23%.

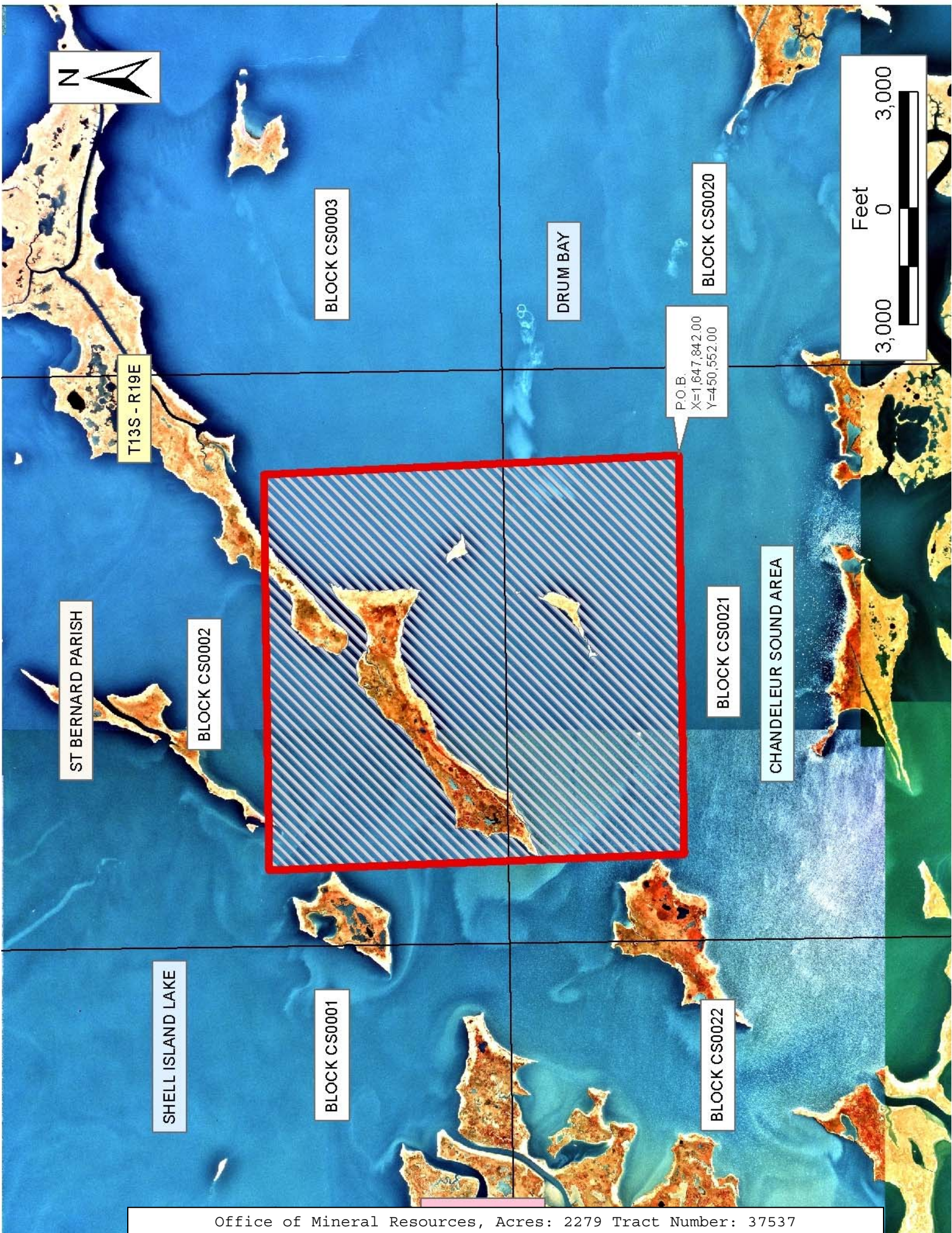
NOTE: The State of Louisiana does hereby reserve, and this lease shall be subject to, the imprescriptible right of surface use in the nature of a servitude in favor of the Department of Natural Resources, including its Offices and Commissions, for the sole purpose of implementing, constructing, servicing and maintaining approved coastal zone management and/or restoration projects. Utilization of any and all rights derived under this lease by the mineral lessee, its agents, successors or assigns, shall not interfere with nor hinder the reasonable surface use by the

Department of Natural Resources, its Offices or Commissions, as herein above reserved.

NOTE: The Department of Wildlife and Fisheries has designated certain areas in the coastal waters of the State of Louisiana as Oyster Seed Bed Areas. The exact location of those Seed Bed Areas must be obtained from the Department of Wildlife and Fisheries and any work done under a mineral lease from the State of Louisiana may necessarily be conducted in conformity with the rules and regulations promulgated by the said Department of Wildlife and Fisheries for Oyster Seed Bed Areas.

Applicant: KARE-SUE ENERGY, INC.

Bidder	Cash Payment	Price/Acre	Rental	Oil	Gas	Other



**TRACT 37538 - St. John The Baptist Parish, Louisiana**

All of the lands now or formerly constituting the beds and bottoms of all water bodies of every nature and description the title of which vests in the State of Louisiana, together with all islands arising therein and other lands formed by accretion or by reliction, where allowed by law, excepting tax adjudicated lands, and not presently under mineral lease on July 13, 2005, situated in St. John The Baptist Parish, Louisiana, and more particularly described as follows: Beginning at the Southeast corner of State Lease No. 17886 having Coordinates of X = 2,248,295.00 and Y = 465,680.00; thence South 12,112.00 feet to a point having Coordinates of X = 2,248,295.00 and Y = 453,568.00; thence West 8,040.00 feet to a point having Coordinates of X = 2,240,255.00 and Y = 453,568.00; thence North 12,112.00 feet to the Southwest corner of said State Lease No. 17886 having Coordinates of X = 2,240,255.00 and Y = 465,680.00; thence East 8,040.00 feet on the South line of said State Lease No. 17886 to the point of beginning, containing approximately **2,235.55 acres**, all as more particularly outlined on a plat on file in the Office of Mineral Resources, Department of Natural Resources. All bearings, distances and coordinates are based on Louisiana Coordinate System of 1927, (North or South Zone), where applicable.

NOTE: The above description of the Tract nominated for lease has been provided and corrected, where required, exclusively by the nomination party. Any mineral lease selected from this Tract and awarded by the Louisiana State Mineral Board shall be without warranty of any kind, either express, implied, or statutory, including, but not limited to, the implied warranties of merchantability and fitness for a particular purpose. Should the mineral lease awarded by the Louisiana State Mineral Board be subsequently modified, cancelled or abrogated due to the existence of conflicting leases, operating agreements, private claims or other future obligations or conditions which may affect all or any portion of the leased Tract, it shall not relieve the Lessee of the obligation to pay any bonus due thereon to the Louisiana State Mineral Board, nor shall the Louisiana State Mineral Board be obligated to refund any consideration paid by the Lessor prior to such modification, cancellation, or abrogation, including, but not limited to, bonuses, rentals and royalties.

NOTE: The State of Louisiana does hereby reserve, and this lease shall be subject to, the imprescriptible right of surface use in the nature of a servitude in favor of the Department of Natural Resources, including its Offices and Commissions, for the sole purpose of implementing, constructing, servicing and maintaining approved coastal zone management and/or restoration projects. Utilization of any and all rights derived under this lease by the mineral lessee, its agents, successors or assigns, shall not interfere with nor hinder the reasonable surface use by the Department of Natural Resources, its Offices or Commissions, as herein above reserved.

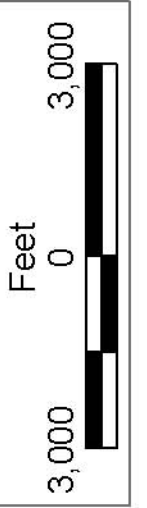
Applicant: DOYLE LAND SERVICES, INC.

Bidder	Cash Payment	Price/Acre	Rental	Oil	Gas	Other



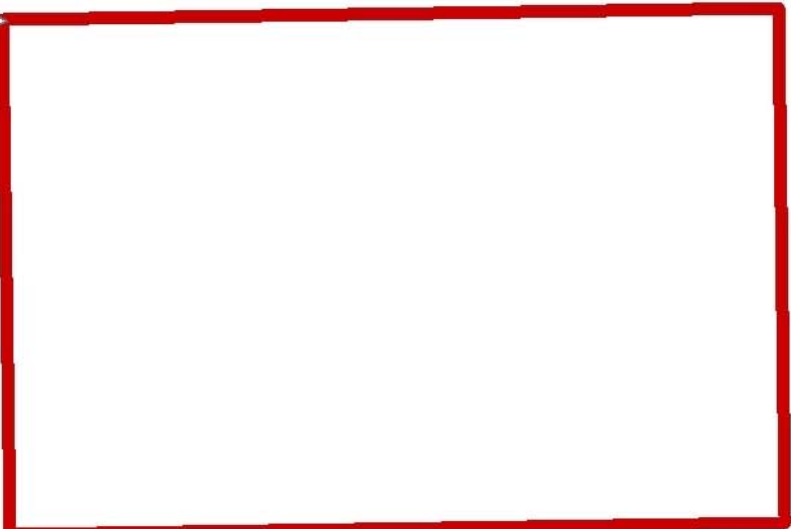


ST CHARLES PARISH



P.O.B.  
X=2,248,295.00  
Y=465,680.00

SL 17886



LAC DES ALLEMANDS

ST JOHN THE BAPTIST PARISH

**TRACT 37539 - St. Charles and St. John The Baptist Parishes, Louisiana**

All of the lands now or formerly constituting the beds and bottoms of all water bodies of every nature and description the title of which vests in the State of Louisiana, together with all islands arising therein and other lands formed by accretion or by reliction, where allowed by law, excepting tax adjudicated lands, and not presently under mineral lease on July 13, 2005, situated in St. Charles and St. John The Baptist Parishes, Louisiana, and more particularly described as follows: Beginning at a point having Coordinates of X = 2,248,295.00 and Y = 463,478.00; thence East 11,095.00 feet to a point having Coordinates of X = 2,259,390.00 and Y = 463,478.00; thence South 9,910.00 feet to a point having Coordinates of X = 2,259,390.00 and Y = 453,568.00; thence West 11,095.00 feet to a point having Coordinates of X = 2,248,295.00 and Y = 453,568.00; thence North 9,910.00 feet to the point of beginning, containing approximately **957 acres**, all as more particularly outlined on a plat on file in the Office of Mineral Resources, Department of Natural Resources. All bearings, distances and coordinates are based on Louisiana Coordinate System of 1927, (North or South Zone), where applicable.

NOTE: The above description of the Tract nominated for lease has been provided and corrected, where required, exclusively by the nomination party. Any mineral lease selected from this Tract and awarded by the Louisiana State Mineral Board shall be without warranty of any kind, either express, implied, or statutory, including, but not limited to, the implied warranties of merchantability and fitness for a particular purpose. Should the mineral lease awarded by the Louisiana State Mineral Board be subsequently modified, cancelled or abrogated due to the existence of conflicting leases, operating agreements, private claims or other future obligations or conditions which may affect all or any portion of the leased Tract, it shall not relieve the Lessee of the obligation to pay any bonus due thereon to the Louisiana State Mineral Board, nor shall the Louisiana State Mineral Board be obligated to refund any consideration paid by the Lessor prior to such modification, cancellation, or abrogation, including, but not limited to, bonuses, rentals and royalties.

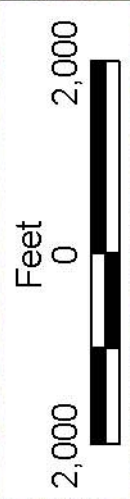
NOTE: The State of Louisiana does hereby reserve, and this lease shall be subject to, the imprescriptible right of surface use in the nature of a servitude in favor of the Department of Natural Resources, including its Offices and Commissions, for the sole purpose of implementing, constructing, servicing and maintaining approved coastal zone management and/or restoration projects. Utilization of any and all rights derived under this lease by the mineral lessee, its agents, successors or assigns, shall not interfere with nor hinder the reasonable surface use by the Department of Natural Resources, its Offices or Commissions, as herein above reserved.

Applicant: DOYLE LAND SERVICES, INC.

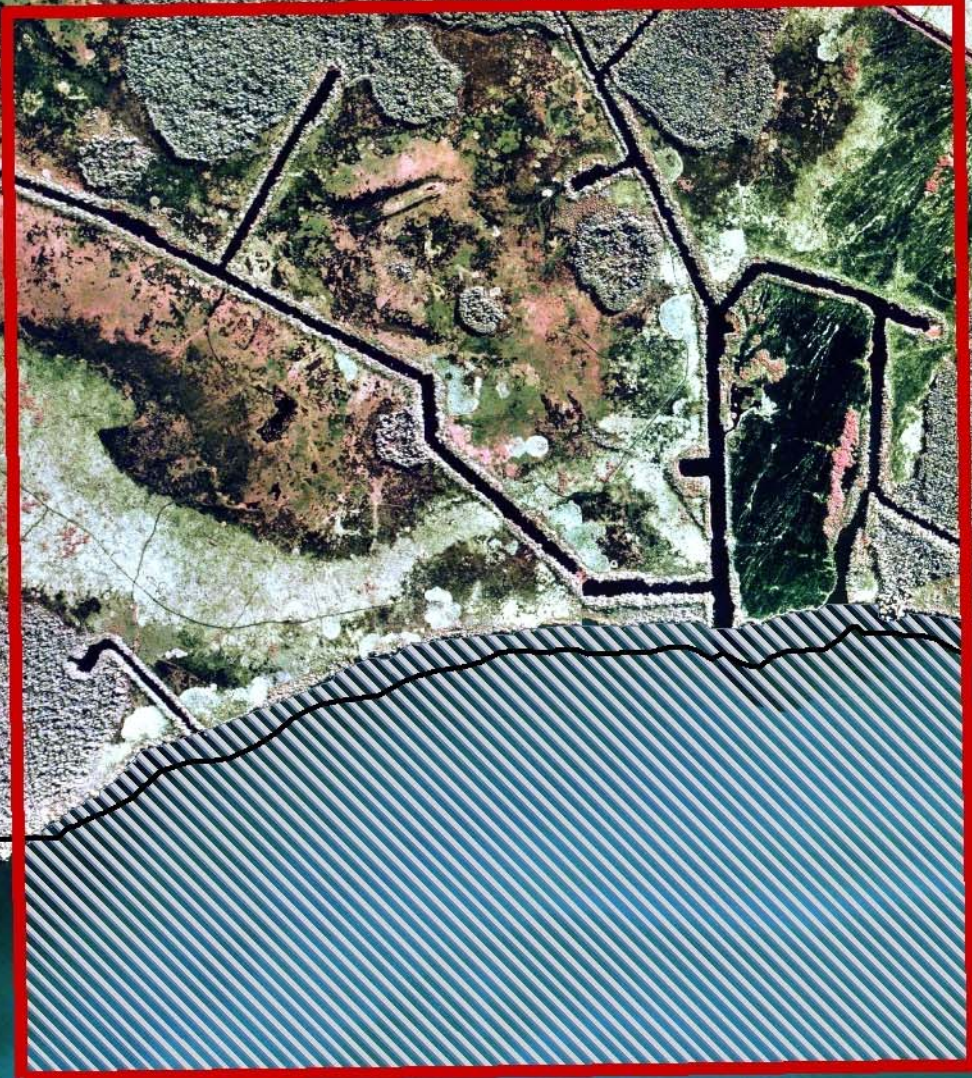
Bidder	Cash Payment	Price/Acre	Rental	Oil	Gas	Other



T13S - R19E



ST CHARLES PARISH



ST JOHN THE BAPTIST PARISH

SL 17886

P.O.B.  
X=2,248,295.00  
Y=463,478.00

LAC DES ALLEMANDS

**TRACT 37540 - Portion of Block 21, Chandeleur Sound Area, St. Bernard Parish, Louisiana**

All of the lands now or formerly constituting the beds and bottoms of all water bodies of every nature and description the title of which vests in the State of Louisiana, together with all islands arising therein and other lands formed by accretion or by reliction, where allowed by law, excepting tax adjudicated lands, and not presently under mineral lease on July 13, 2005, situated in St. Bernard Parish, Louisiana, and more particularly described as follows: Beginning at a point within Block 21, Chandeleur Sound Area, having Coordinates of X = 2,647,842.00 and Y = 450,552.00; thence South 01 degrees 51 minutes 37 seconds East 10,227.39 feet to a point on the South line of said Block 21, having Coordinates of X = 2,648,174.00 and Y = 440,330.00; thence West 10,344.00 feet on the South line of said Block 21 to a point having Coordinates of X = 2,637,830.00 and Y = 440,330.00; thence North 01 degrees 24 minutes 04 seconds West 10,225.06 feet to a point having Coordinates of X = 2,637,580.00 and Y = 450,552.00; thence East 10,262.00 feet to the point of beginning, containing approximately **1,954 acres**, all as more particularly outlined on a plat on file in the Office of Mineral Resources, Department of Natural Resources. All bearings, distances and coordinates are based on Louisiana Coordinate System of 1927, (North or South Zone), where applicable.

NOTE: The above description of the Tract nominated for lease has been provided and corrected, where required, exclusively by the nomination party. Any mineral lease selected from this Tract and awarded by the Louisiana State Mineral Board shall be without warranty of any kind, either express, implied, or statutory, including, but not limited to, the implied warranties of merchantability and fitness for a particular purpose. Should the mineral lease awarded by the Louisiana State Mineral Board be subsequently modified, cancelled or abrogated due to the existence of conflicting leases, operating agreements, private claims or other future obligations or conditions which may affect all or any portion of the leased Tract, it shall not relieve the Lessee of the obligation to pay any bonus due thereon to the Louisiana State Mineral Board, nor shall the Louisiana State Mineral Board be obligated to refund any consideration paid by the Lessor prior to such modification, cancellation, or abrogation, including, but not limited to, bonuses, rentals and royalties.

NOTE: The Office of Mineral Resources will require a minimum bonus of \$230 per acre and a minimum royalty of 23%.

NOTE: The State of Louisiana does hereby reserve, and this lease shall be subject to, the imprescriptible right of surface use in the nature of a servitude in favor of the Department of Natural Resources, including its Offices and Commissions, for the sole purpose of implementing, constructing, servicing and maintaining approved coastal zone management and/or restoration projects. Utilization of any and all rights derived under this lease by the mineral lessee, its agents, successors or assigns,

shall not interfere with nor hinder the reasonable surface use by the Department of Natural Resources, its Offices or Commissions, as herein above reserved.

NOTE: The Department of Wildlife and Fisheries has designated certain areas in the coastal waters of the State of Louisiana as Oyster Seed Bed Areas. The exact location of those Seed Bed Areas must be obtained from the Department of Wildlife and Fisheries and any work done under a mineral lease from the State of Louisiana may necessarily be conducted in conformity with the rules and regulations promulgated by the said Department of Wildlife and Fisheries for Oyster Seed Bed Areas.

Applicant: KARE-SUE ENERGY, INC.

Bidder	Cash Payment	Price/Acre	Rental	Oil	Gas	Other



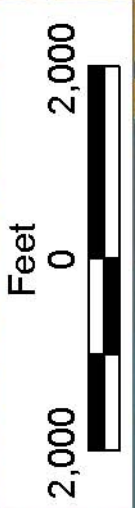
P.O.B.  
X=2,647,842.00  
Y=450,522.00

DRUM BAY

ST BERNARD PARISH

BLOCK CS0021

T14S - R19E



CHANDELEUR SOUND AREA

