

**TRACT 37511 - Bossier Parish, Louisiana**

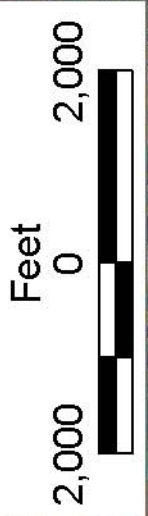
All of the lands now or formerly constituting the beds and bottoms of all water bodies of every nature and description the title of which vests in the State of Louisiana, together with all islands arising therein and other lands formed by accretion or by reliction, where allowed by law, excepting tax adjudicated lands, and not presently under mineral lease on July 13, 2005, situated in Bossier Parish, Louisiana, and more particularly described as follows: Beginning at Northeast corner of State Lease No. 17732, said point located on the West line of State Lease No. 17733, having Coordinates of X = 1,693,325.95 and Y = 614,388.14; thence Westerly approximately 5,280.00 feet along the North line of State Lease No. 17732 to its intersection with a North/South line having a Coordinate of X = 1,688,045.95; thence North approximately 5,264 feet to a point having Coordinates of X = 1,688,045.95 and Y = 619,652.40; thence East 5,280.00 feet to the Northwest corner of said State Lease No. 17733 having Coordinates of X = 1,693,325.95 and Y = 619,652.40; thence South 5,264.26 feet along the West line of said State Lease No. 17733 to the point of beginning, **LESS AND EXCEPT** all those portions of State Lease No. 13190 that may lie within the above described tract, containing approximately **21 acres**, all as more particularly outlined on a plat on file in the Office of Mineral Resources, Department of Natural Resources. All bearings, distances and coordinates are based on Louisiana Coordinate System of 1927, (North or South Zone), where applicable.

NOTE: The above description of the Tract nominated for lease has been provided and corrected, where required, exclusively by the nomination party. Any mineral lease selected from this Tract and awarded by the Louisiana State Mineral Board shall be without warranty of any kind, either express, implied, or statutory, including, but not limited to, the implied warranties of merchantability and fitness for a particular purpose. Should the mineral lease awarded by the Louisiana State Mineral Board be subsequently modified, cancelled or abrogated due to the existence of conflicting leases, operating agreements, private claims or other future obligations or conditions which may affect all or any portion of the leased Tract, it shall not relieve the Lessee of the obligation to pay any bonus due thereon to the Louisiana State Mineral Board, nor shall the Louisiana State Mineral Board be obligated to refund any consideration paid by the Lessor prior to such modification, cancellation, or abrogation, including, but not limited to, bonuses, rentals and royalties.

Bidder	Cash Payment	Price/Acre	Rental	Oil	Gas	Other

Applicant: JPD ENERGY, INC.





BOSSIER PARISH

T16N - R11W

SL 17733

RED CHUTE BAYOU

P.O.B.  
X=1,693,325.95  
Y=614,388.14

SL 13190

SL 17732



**TRACT 37512 - Lasalle Parish, Louisiana**

All of the lands now or formerly constituting the beds and bottoms of all water bodies of every nature and description the title of which vests in the State of Louisiana, together with all islands arising therein and other lands formed by accretion or by reliction, where allowed by law, excepting tax adjudicated lands, and not presently under mineral lease on July 13, 2005, situated in Lasalle Parish, Louisiana, and more particularly described as follows: Beginning at a point having Coordinates of X = 2,113,589.88 and Y = 315,719.91. thence North 89 degrees 34 minutes 05 seconds East 1320.11 feet to a point having Coordinates of X = 2,114,909.95 and Y = 315,729.86; thence South 00 degree 22 minutes 17 seconds East 2591.75 feet to a point having Coordinates of X = 2,114,926.75 and Y = 313,138.16; thence South 89 degrees 52 minutes 44 seconds West 1320.09 feet to a point having Coordinates of X = 2,113,606.66 and Y = 313,135.37; thence North 00 degrees 22 minutes 19 seconds West 2584.59 feet to the point of beginning, **LESS AND EXCEPT** all those portions of State Lease 1461, as amended, that may lie within the above described tract, containing approximately **38 acres**, all as more particularly outlined on a plat on file in the Office of Mineral Resources, Department of Natural Resources. All bearings, distances and coordinates are based on Louisiana Coordinate System of 1927, (North or South Zone), where applicable.

NOTE: The above description of the Tract nominated for lease has been provided and corrected, where required, exclusively by the nomination party. Any mineral lease selected from this Tract and awarded by the Louisiana State Mineral Board shall be without warranty of any kind, either express, implied, or statutory, including, but not limited to, the implied warranties of merchantability and fitness for a particular purpose. Should the mineral lease awarded by the Louisiana State Mineral Board be subsequently modified, cancelled or abrogated due to the existence of conflicting leases, operating agreements, private claims or other future obligations or conditions which may affect all or any portion of the leased Tract, it shall not relieve the Lessee of the obligation to pay any bonus due thereon to the Louisiana State Mineral Board, nor shall the Louisiana State Mineral Board be obligated to refund any consideration paid by the Lessor prior to such modification, cancellation, or abrogation, including, but not limited to, bonuses, rentals and royalties.

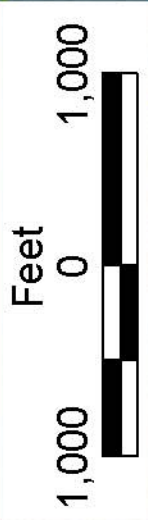
Applicant: BUENA VISTA CORPORATION

Bidder	Cash Payment	Price/Acre	Rental	Oil	Gas	Other





SL 1461



CATAHOULA LAKE

SL 1461



APPROX. 36'  
CONTOUR

LA SALLE PARISH

T7N - R3E

POB  
X=2,113,589.88  
Y=3,115,719.91

T6N - R3E



**TRACT 37513 - Washington Parish, Louisiana**

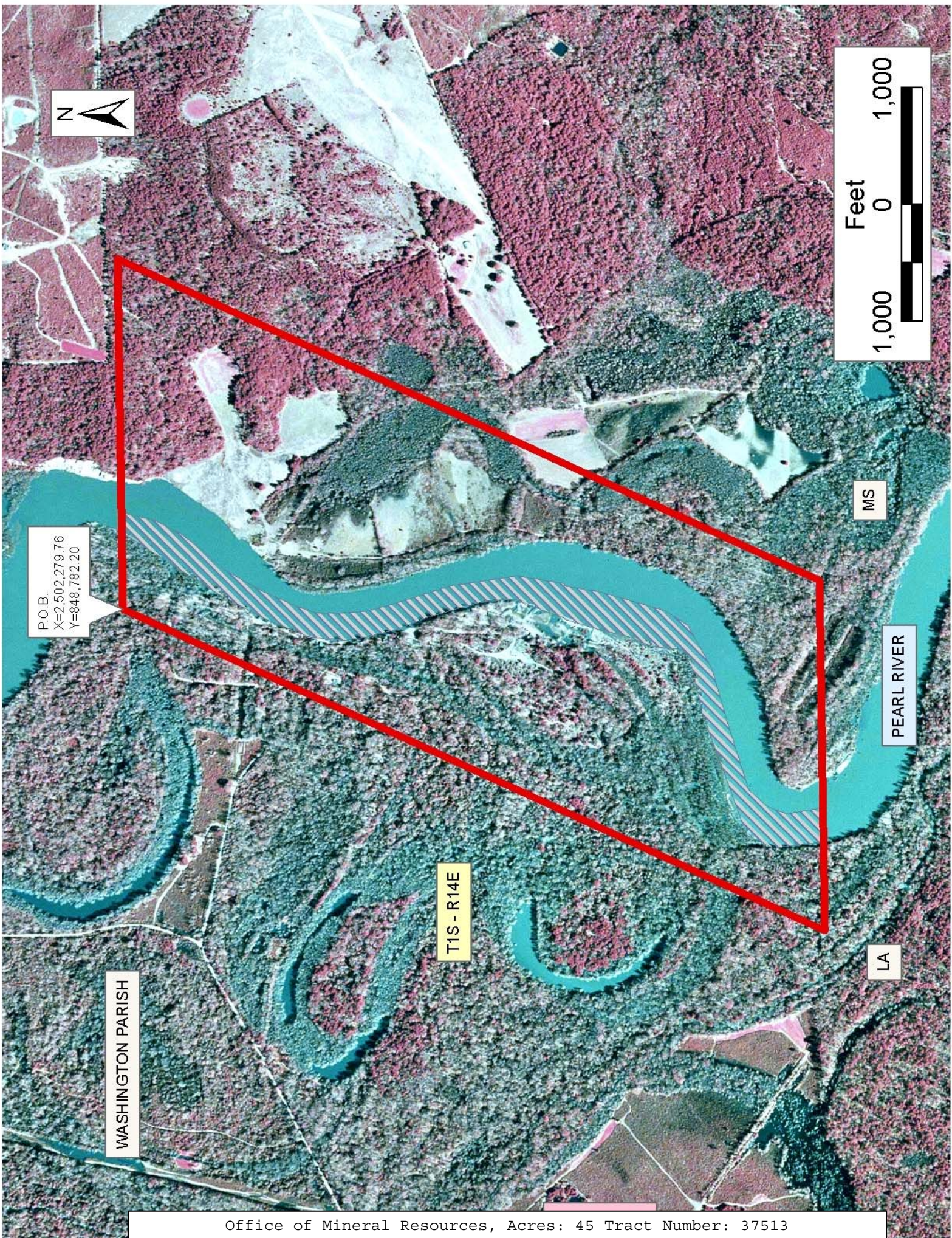
All of the lands now or formerly constituting the beds and bottoms of all water bodies of every nature and description the title of which vests in the State of Louisiana, together with all islands arising therein and other lands formed by accretion or by reliction, where allowed by law, excepting tax adjudicated lands, and not presently under mineral lease on July 13, 2005, situated in Washington Parish, Louisiana, and more particularly described as follows: Beginning at a point having Coordinates of X = 2,502,279.76 and Y = 848,782.20; thence East 3,000.00 feet to a point having Coordinates of X = 2,505,279.76 and Y = 848,782.20; thence South 25 degrees 28 minutes 29 seconds West 6,609.14 feet to a point having Coordinates of X = 2,502,437.08 and Y = 842,815.63; thence West 3,000.36 feet to a point having Coordinates of X = 2,499,436.73 and Y = 842,815.63; thence North 25 degrees 28 minutes 39 seconds East 6,609.29 feet to the point of beginning, containing approximately **45 acres**, all as more particularly outlined on a plat on file in the Office of Mineral Resources, Department of Natural Resources. All bearings, distances and coordinates are based on Louisiana Coordinate System of 1927, (North or South Zone), where applicable.

NOTE: The above description of the Tract nominated for lease has been provided and corrected, where required, exclusively by the nomination party. Any mineral lease selected from this Tract and awarded by the Louisiana State Mineral Board shall be without warranty of any kind, either express, implied, or statutory, including, but not limited to, the implied warranties of merchantability and fitness for a particular purpose. Should the mineral lease awarded by the Louisiana State Mineral Board be subsequently modified, cancelled or abrogated due to the existence of conflicting leases, operating agreements, private claims or other future obligations or conditions which may affect all or any portion of the leased Tract, it shall not relieve the Lessee of the obligation to pay any bonus due thereon to the Louisiana State Mineral Board, nor shall the Louisiana State Mineral Board be obligated to refund any consideration paid by the Lessor prior to such modification, cancellation, or abrogation, including, but not limited to, bonuses, rentals and royalties.

Applicant: THEOPHILUS OIL GAS & LAND SERVICES LLC

Bidder	Cash Payment	Price/Acre	Rental	Oil	Gas	Other







**TRACT 37514 - Portion of Block 13, North Lake Borgne Area, St. Bernard Parish, Louisiana**

All of the lands now or formerly constituting the beds and bottoms of all water bodies of every nature and description the title of which vests in the State of Louisiana, together with all islands arising therein and other lands formed by accretion or by reliction, where allowed by law, excepting tax adjudicated lands, and not presently under mineral lease on July 13, 2005, situated in St. Bernard Parish, Louisiana, and more particularly described as follows: Beginning at a point on the West line of Block 13, North Lake Borgne Area, having Coordinates of X = 2,607,250.00 and Y = 522,996.00; thence North 6,962.70 feet on the West line of said Block 13 to its Northwest corner having Coordinates of X = 2,607,250.00 and Y = 529,958.70; thence East 13,350.00 feet on the North line of said Block 13 to a point having Coordinates of X = 2,620,600.00 and Y = 529,958.70; thence South 6,962.70 feet to a point having Coordinates of X = 2,620,600.00 and Y = 522,996.00; thence West 13,350.00 feet to the point of beginning, containing approximately **2,133.89 acres**, all as more particularly outlined on a plat on file in the Office of Mineral Resources, Department of Natural Resources. All bearings, distances and coordinates are based on Louisiana Coordinate System of 1927, (North or South Zone), where applicable.

NOTE: The above description of the Tract nominated for lease has been provided and corrected, where required, exclusively by the nomination party. Any mineral lease selected from this Tract and awarded by the Louisiana State Mineral Board shall be without warranty of any kind, either express, implied, or statutory, including, but not limited to, the implied warranties of merchantability and fitness for a particular purpose. Should the mineral lease awarded by the Louisiana State Mineral Board be subsequently modified, cancelled or abrogated due to the existence of conflicting leases, operating agreements, private claims or other future obligations or conditions which may affect all or any portion of the leased Tract, it shall not relieve the Lessee of the obligation to pay any bonus due thereon to the Louisiana State Mineral Board, nor shall the Louisiana State Mineral Board be obligated to refund any consideration paid by the Lessor prior to such modification, cancellation, or abrogation, including, but not limited to, bonuses, rentals and royalties.

NOTE: The Office of Mineral Resources will require a minimum bonus of \$230 per acre and a minimum royalty of 23%.

NOTE: The State of Louisiana does hereby reserve, and this lease shall be subject to, the imprescriptible right of surface use in the nature of a servitude in favor of the Department of Natural Resources, including its Offices and Commissions, for the sole purpose of implementing, constructing, servicing and maintaining approved coastal zone management and/or restoration projects. Utilization of any and all rights derived under this lease by the mineral lessee, its agents, successors or assigns, shall not interfere with nor hinder the reasonable surface use by the



Department of Natural Resources, its Offices or Commissions, as herein above reserved.

Applicant: KARE-SUE ENERGY, INC.

Bidder	Cash Payment	Price/Acre	Rental	Oil	Gas	Other





BLOCK LB0019

BLOCK LB0020

ST BERNARD PARISH

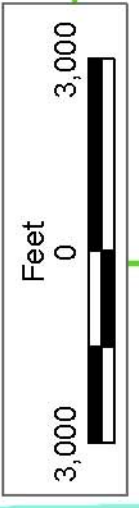
NORTH LAKE BORGNE AREA

BLOCK LB0014

BLOCK LB0013

CHANDELEUR SOUND AREA ADDITION, REVISED

BLOCK CX0022



T11S - R18E

BLOCK LB0011

BLOCK LB0012

P.O.B.  
X=2,607,250.00  
Y=622,996.00

MISSISSIPPI SOUND



**TRACT 37515 - Portion of Block 12, North Lake Borgne Area, St. Bernard Parish, Louisiana**

All of the lands now or formerly constituting the beds and bottoms of all water bodies of every nature and description the title of which vests in the State of Louisiana, together with all islands arising therein and other lands formed by accretion or by reliction, where allowed by law, excepting tax adjudicated lands, and not presently under mineral lease on July 13, 2005, situated in St. Bernard Parish, Louisiana, and more particularly described as follows: Beginning at a point on the East line of Block 12, North Lake Borgne Area, having Coordinates of X = 2,607,250.00 and Y = 522,996.00; thence West 9,000.00 feet to a point having Coordinates of X = 2,598,250.00 and Y = 522,996.00; thence North 6,962.70 feet to a point on the North line of said Block 12 having Coordinates of X = 2,598,250.00 and Y = 529,958.70; thence East 9,000.00 feet on the North line of said Block 12 to its Northeast corner having Coordinates of X = 2,607,250.00 and Y = 529,958.70; thence South 6,962.70 feet on the East line of said Block 12 to the point of beginning, containing approximately **1,438.57 acres**, all as more particularly outlined on a plat on file in the Office of Mineral Resources, Department of Natural Resources. All bearings, distances and coordinates are based on Louisiana Coordinate System of 1927, (North or South Zone), where applicable.

NOTE: The above description of the Tract nominated for lease has been provided and corrected, where required, exclusively by the nomination party. Any mineral lease selected from this Tract and awarded by the Louisiana State Mineral Board shall be without warranty of any kind, either express, implied, or statutory, including, but not limited to, the implied warranties of merchantability and fitness for a particular purpose. Should the mineral lease awarded by the Louisiana State Mineral Board be subsequently modified, cancelled or abrogated due to the existence of conflicting leases, operating agreements, private claims or other future obligations or conditions which may affect all or any portion of the leased Tract, it shall not relieve the Lessee of the obligation to pay any bonus due thereon to the Louisiana State Mineral Board, nor shall the Louisiana State Mineral Board be obligated to refund any consideration paid by the Lessor prior to such modification, cancellation, or abrogation, including, but not limited to, bonuses, rentals and royalties.

NOTE: The Office of Mineral Resources will require a minimum bonus of \$230 per acre and a minimum royalty of 23%.

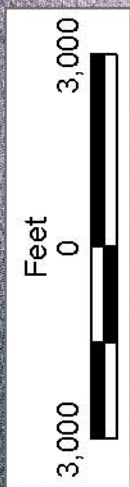
NOTE: The State of Louisiana does hereby reserve, and this lease shall be subject to, the imprescriptible right of surface use in the nature of a servitude in favor of the Department of Natural Resources, including its Offices and Commissions, for the sole purpose of implementing, constructing, servicing and maintaining approved coastal zone management and/or restoration projects. Utilization of any and all rights derived under this lease by the mineral lessee, its agents, successors or assigns,

shall not interfere with nor hinder the reasonable surface use by the Department of Natural Resources, its Offices or Commissions, as herein above reserved.

Applicant: KARE-SUE ENERGY, INC.

Bidder	Cash Payment	Price/Acre	Rental	Oil	Gas	Other





T11S - R18E

ST BERNARD PARISH

NORTH LAKE BORGNE AREA

BLOCK LB0014

BLOCK LB0013

P.O.B.  
X=2,607,250.00  
Y=522,996.00



BLOCK LB0011

BLOCK LB0012

MISSISSIPPI SOUND

SL 18247



**TRACT 37516 - Portion of Block 12, North Lake Borgne Area, St. Bernard Parish, Louisiana**

All of the lands now or formerly constituting the beds and bottoms of all water bodies of every nature and description the title of which vests in the State of Louisiana, together with all islands arising therein and other lands formed by accretion or by reliction, where allowed by law, excepting tax adjudicated lands, and not presently under mineral lease on July 13, 2005, situated in St. Bernard Parish, Louisiana, and more particularly described as follows: Beginning at a point on the West line of Block 12, North Lake Borgne Area, having Coordinates of X = 2,589,250.00 and Y = 522,996.00; thence North 6,962.70 feet on the West line of said Block 12 to its Northwest corner having Coordinates of X = 2,589,250.00 and Y = 529,958.70; thence East 9,000.00 feet on the North line of said Block 12 to a point having Coordinates of X = 2,598,250.00 and Y = 529,958.70; thence South 6,962.70 feet to a point having Coordinates of X = 2,598,250.00 and Y = 522,996.00; thence West 9,000.00 feet to the point of beginning, containing approximately **1,438.57 acres**, all as more particularly outlined on a plat on file in the Office of Mineral Resources, Department of Natural Resources. All bearings, distances and coordinates are based on Louisiana Coordinate System of 1927, (North or South Zone), where applicable.

NOTE: The above description of the Tract nominated for lease has been provided and corrected, where required, exclusively by the nomination party. Any mineral lease selected from this Tract and awarded by the Louisiana State Mineral Board shall be without warranty of any kind, either express, implied, or statutory, including, but not limited to, the implied warranties of merchantability and fitness for a particular purpose. Should the mineral lease awarded by the Louisiana State Mineral Board be subsequently modified, cancelled or abrogated due to the existence of conflicting leases, operating agreements, private claims or other future obligations or conditions which may affect all or any portion of the leased Tract, it shall not relieve the Lessee of the obligation to pay any bonus due thereon to the Louisiana State Mineral Board, nor shall the Louisiana State Mineral Board be obligated to refund any consideration paid by the Lessor prior to such modification, cancellation, or abrogation, including, but not limited to, bonuses, rentals and royalties.

NOTE: The Office of Mineral Resources will require a minimum bonus of \$230 per acre and a minimum royalty of 23%.

NOTE: The State of Louisiana does hereby reserve, and this lease shall be subject to, the imprescriptible right of surface use in the nature of a servitude in favor of the Department of Natural Resources, including its Offices and Commissions, for the sole purpose of implementing, constructing, servicing and maintaining approved coastal zone management and/or restoration projects. Utilization of any and all rights derived under this lease by the mineral lessee, its agents, successors or assigns, shall not interfere with nor hinder the reasonable surface use by the



Department of Natural Resources, its Offices or Commissions, as herein above reserved.

Applicant: KARE-SUE ENERGY, INC.

Bidder	Cash Payment	Price/Acre	Rental	Oil	Gas	Other



ST BERNARD PARISH

NORTH LAKE BORGNE AREA

BLOCK LB0011

BLOCK LB0008

LAKE BORGNE

BLOCK LB0007

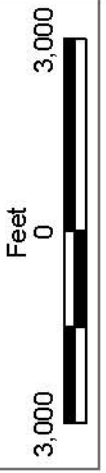
BLOCK LB0012

MISSISSIPPI SOUND

P.O.B.  
X=2,588,250.00  
Y=522,996.00

T11S - R17E

SL 18247





**TRACT 37517 - Portion of Block 7, North Lake Borgne Area, St. Bernard Parish, Louisiana**

All of the lands now or formerly constituting the beds and bottoms of all water bodies of every nature and description the title of which vests in the State of Louisiana, together with all islands arising therein and other lands formed by accretion or by reliction, where allowed by law, excepting tax adjudicated lands, and not presently under mineral lease on July 13, 2005, situated in St. Bernard Parish, Louisiana, and more particularly described as follows: Beginning at a point on the East line of Block 7, North Lake Borgne Area, having Coordinates of X = 2,589,250.00 and Y = 522,996.00; thence West 11,740.00 feet to a point having Coordinates of X = 2,577,510.00 and Y = 522,996.00; thence North 6,962.70 feet to a point on the North line of said Block 7 having Coordinates of X = 2,577,510.00 and Y = 529,958.70; thence East 11,740.00 feet on the North line of said Block 7 to its Northeast corner having Coordinates of X = 2,589,250.00 and Y = 529,958.70; thence South 6,962.70 feet on the East line of said Block 7 to the point of beginning, containing approximately **1,876.54 acres**, all as more particularly outlined on a plat on file in the Office of Mineral Resources, Department of Natural Resources. All bearings, distances and coordinates are based on Louisiana Coordinate System of 1927, (North or South Zone), where applicable.

NOTE: The above description of the Tract nominated for lease has been provided and corrected, where required, exclusively by the nomination party. Any mineral lease selected from this Tract and awarded by the Louisiana State Mineral Board shall be without warranty of any kind, either express, implied, or statutory, including, but not limited to, the implied warranties of merchantability and fitness for a particular purpose. Should the mineral lease awarded by the Louisiana State Mineral Board be subsequently modified, cancelled or abrogated due to the existence of conflicting leases, operating agreements, private claims or other future obligations or conditions which may affect all or any portion of the leased Tract, it shall not relieve the Lessee of the obligation to pay any bonus due thereon to the Louisiana State Mineral Board, nor shall the Louisiana State Mineral Board be obligated to refund any consideration paid by the Lessor prior to such modification, cancellation, or abrogation, including, but not limited to, bonuses, rentals and royalties.

NOTE: The Office of Mineral Resources will require a minimum bonus of \$230 per acre and a minimum royalty of 23%.

NOTE: The State of Louisiana does hereby reserve, and this lease shall be subject to, the imprescriptible right of surface use in the nature of a servitude in favor of the Department of Natural Resources, including its Offices and Commissions, for the sole purpose of implementing, constructing, servicing and maintaining approved coastal zone management and/or restoration projects. Utilization of any and all rights derived under this lease by the mineral lessee, its agents, successors or assigns, shall not interfere with nor hinder the reasonable surface use by the

Department of Natural Resources, its Offices or Commissions, as herein above reserved.

NOTE: The Department of Wildlife and Fisheries has designated certain areas in the coastal waters of the State of Louisiana as Oyster Seed Bed Areas. The exact location of those Seed Bed Areas must be obtained from the Department of Wildlife and Fisheries and any work done under a mineral lease from the State of Louisiana may necessarily be conducted in conformity with the rules and regulations promulgated by the said Department of Wildlife and Fisheries for Oyster Seed Bed Areas.

Applicant: KARE-SUE ENERGY, INC.

Bidder	Cash Payment	Price/Acre	Rental	Oil	Gas	Other





ST BERNARD PARISH

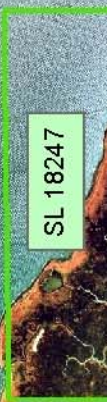
NORTH LAKE BORGNE AREA

BLOCK LB0011

BLOCK LB0012

P.O.B.  
X=2,588,250.00  
Y=522,996.00

LE PETIT PASS



SL 18247

T11S - R17E

BLOCK LB0008

BLOCK LB0007

LAKE BORGNE



**TRACT 37518 - Portion of Block 13, North Lake Borgne Area, St. Bernard Parish, Louisiana**

All of the lands now or formerly constituting the beds and bottoms of all water bodies of every nature and description the title of which vests in the State of Louisiana, together with all islands arising therein and other lands formed by accretion or by reliction, where allowed by law, excepting tax adjudicated lands, and not presently under mineral lease on July 13, 2005, situated in St. Bernard Parish, Louisiana, and more particularly described as follows: Beginning at a point on the West line of Block 13, North Lake Borgne Area, having Coordinates of X = 2,607,250.00 and Y = 522,996.00; thence East 13,350.00 feet to a point on the East line of said Block 13, having Coordinates of X = 2,620,600.00 and Y = 522,996.00; thence South 8,157.00 feet on the East line of said Block 13 and a projection thereof to a point having Coordinates of X = 2,620,600.00 and Y = 514,839.00; thence West 13,350.00 feet to a point having Coordinates of X = 2,607,250.00 and Y = 514,839.00; thence North 8,157.00 feet to the point of beginning, containing approximately **2,499.91 acres**, all as more particularly outlined on a plat on file in the Office of Mineral Resources, Department of Natural Resources. All bearings, distances and coordinates are based on Louisiana Coordinate System of 1927, (North or South Zone), where applicable.

NOTE: The above description of the Tract nominated for lease has been provided and corrected, where required, exclusively by the nomination party. Any mineral lease selected from this Tract and awarded by the Louisiana State Mineral Board shall be without warranty of any kind, either express, implied, or statutory, including, but not limited to, the implied warranties of merchantability and fitness for a particular purpose. Should the mineral lease awarded by the Louisiana State Mineral Board be subsequently modified, cancelled or abrogated due to the existence of conflicting leases, operating agreements, private claims or other future obligations or conditions which may affect all or any portion of the leased Tract, it shall not relieve the Lessee of the obligation to pay any bonus due thereon to the Louisiana State Mineral Board, nor shall the Louisiana State Mineral Board be obligated to refund any consideration paid by the Lessor prior to such modification, cancellation, or abrogation, including, but not limited to, bonuses, rentals and royalties.

NOTE: The Office of Mineral Resources will require a minimum bonus of \$230 per acre and a minimum royalty of 23%.

NOTE: The State of Louisiana does hereby reserve, and this lease shall be subject to, the imprescriptible right of surface use in the nature of a servitude in favor of the Department of Natural Resources, including its Offices and Commissions, for the sole purpose of implementing, constructing, servicing and maintaining approved coastal zone management and/or restoration projects. Utilization of any and all rights derived under this lease by the mineral lessee, its agents, successors or assigns, shall not interfere with nor hinder the reasonable surface use by the

Department of Natural Resources, its Offices or Commissions, as herein above reserved.

Applicant: KARE-SUE ENERGY, INC.

Bidder	Cash Payment	Price/Acre	Rental	Oil	Gas	Other





BLOCK LB0020

ST BERNARD PARISH

NORTH LAKE BORGNE AREA

BLOCK LB0013

BLOCK LB0012

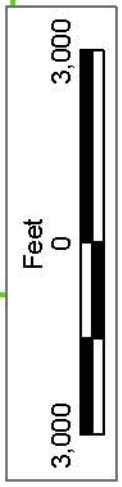
P.O.B.  
X=2,607,250.00  
Y=522,996.00

CHANDELEUR SOUND AREA ADDITION, REVISED

BLOCK CX0022

MISSISSIPPI SOUND

THREE MILE PASS



SL 18246

SL 18248

BLOCK CX0023

SL 18249

SL 18493

SL 18253

T12S - R18E

T11S - R18E

SL 18251

**TRACT 37519 - Portion of Block 12, North Lake Borgne Area, St. Bernard Parish, Louisiana**

All of the lands now or formerly constituting the beds and bottoms of all water bodies of every nature and description the title of which vests in the State of Louisiana, together with all islands arising therein and other lands formed by accretion or by reliction, where allowed by law, excepting tax adjudicated lands, and not presently under mineral lease on July 13, 2005, situated in St. Bernard Parish, Louisiana, and more particularly described as follows: Beginning at a point on the East line of Block 12, North Lake Borgne Area, having Coordinates of X = 2,607,250.00 and Y = 522,996.00; thence South 12,100.00 feet on the East line of said Block 12 and a projection thereof to a point having Coordinates of X = 2,607,250.00 and Y = 510,896.00; thence West 9,000.00 feet to a point having Coordinates of X = 2,598,250.00 and Y = 510,896.00; thence North 12,100.00 feet to a point within said Block 12 having Coordinates of X = 2,598,250.00 and Y = 522,996.00; thence East 9,000.00 feet to the point of beginning, containing approximately **2,499 acres**, all as more particularly outlined on a plat on file in the Office of Mineral Resources, Department of Natural Resources. All bearings, distances and coordinates are based on Louisiana Coordinate System of 1927, (North or South Zone), where applicable.

NOTE: The above description of the Tract nominated for lease has been provided and corrected, where required, exclusively by the nomination party. Any mineral lease selected from this Tract and awarded by the Louisiana State Mineral Board shall be without warranty of any kind, either express, implied, or statutory, including, but not limited to, the implied warranties of merchantability and fitness for a particular purpose. Should the mineral lease awarded by the Louisiana State Mineral Board be subsequently modified, cancelled or abrogated due to the existence of conflicting leases, operating agreements, private claims or other future obligations or conditions which may affect all or any portion of the leased Tract, it shall not relieve the Lessee of the obligation to pay any bonus due thereon to the Louisiana State Mineral Board, nor shall the Louisiana State Mineral Board be obligated to refund any consideration paid by the Lessor prior to such modification, cancellation, or abrogation, including, but not limited to, bonuses, rentals and royalties.

NOTE: The Office of Mineral Resources will require a minimum bonus of \$230 per acre and a minimum royalty of 23%.

NOTE: The State of Louisiana does hereby reserve, and this lease shall be subject to, the imprescriptible right of surface use in the nature of a servitude in favor of the Department of Natural Resources, including its Offices and Commissions, for the sole purpose of implementing, constructing, servicing and maintaining approved coastal zone management and/or restoration projects. Utilization of any and all rights derived under this lease by the mineral lessee, its agents, successors or assigns, shall not interfere with nor hinder the reasonable surface use by the



Department of Natural Resources, its Offices or Commissions, as herein above reserved.

NOTE: The Department of Wildlife and Fisheries has designated certain areas in the coastal waters of the State of Louisiana as Oyster Seed Bed Areas. The exact location of those Seed Bed Areas must be obtained from the Department of Wildlife and Fisheries and any work done under a mineral lease from the State of Louisiana may necessarily be conducted in conformity with the rules and regulations promulgated by the said Department of Wildlife and Fisheries for Oyster Seed Bed Areas.

Applicant: KARE-SUE ENERGY, INC.

Bidder	Cash Payment	Price/Acre	Rental	Oil	Gas	Other





ST BERNARD PARISH

NORTH LAKE BORGNE AREA

P.O.B.  
X=2,607,250.00  
Y=522,996.00

BLOCK LB0012

BLOCK LB0013

MISSISSIPPI SOUND

BLIND PASS

T11S - R17E

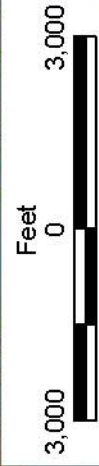
SL 18247

SL 18251

SL 18249

SL 18253

SL 18493





**TRACT 37520 - Portion of Block 12, North Lake Borgne Area, St. Bernard Parish, Louisiana**

All of the lands now or formerly constituting the beds and bottoms of all water bodies of every nature and description the title of which vests in the State of Louisiana, together with all islands arising therein and other lands formed by accretion or by reliction, where allowed by law, excepting tax adjudicated lands, and not presently under mineral lease on July 13, 2005, situated in St. Bernard Parish, Louisiana, and more particularly described as follows: Beginning at a point on the West line of Block 12, North Lake Borgne Area, having Coordinates of X = 2,589,250.00 and Y = 522,996.00; thence East 9,000.00 feet to a point having Coordinates of X = 2,598,250.00 and Y = 522,996.00; thence South 12,100.00 feet to a point having Coordinates of X = 2,598,250.00 and Y = 510,896.00; thence West 5,093.00 feet to a point on the East line of State Lease No. 18247 having Coordinates of X = 2,593,157.00 and Y = 510,896.00; thence along the boundary of said State Lease No. 18247 the following courses and distances: North 4,501.00 feet and West 3,907.00 feet to a point on the North line of said State Lease No. 18247 having Coordinates of X = 2,589,250.00 and Y = 515,397.00; thence North 7,599.00 feet to the point of beginning, containing approximately **2,019 acres**, all as more particularly outlined on a plat on file in the Office of Mineral Resources, Department of Natural Resources. All bearings, distances and coordinates are based on Louisiana Coordinate System of 1927, (North or South Zone), where applicable.

NOTE: The above description of the Tract nominated for lease has been provided and corrected, where required, exclusively by the nomination party. Any mineral lease selected from this Tract and awarded by the Louisiana State Mineral Board shall be without warranty of any kind, either express, implied, or statutory, including, but not limited to, the implied warranties of merchantability and fitness for a particular purpose. Should the mineral lease awarded by the Louisiana State Mineral Board be subsequently modified, cancelled or abrogated due to the existence of conflicting leases, operating agreements, private claims or other future obligations or conditions which may affect all or any portion of the leased Tract, it shall not relieve the Lessee of the obligation to pay any bonus due thereon to the Louisiana State Mineral Board, nor shall the Louisiana State Mineral Board be obligated to refund any consideration paid by the Lessor prior to such modification, cancellation, or abrogation, including, but not limited to, bonuses, rentals and royalties.

NOTE: The Office of Mineral Resources will require a minimum bonus of \$230 per acre and a minimum royalty of 23%.

NOTE: The State of Louisiana does hereby reserve, and this lease shall be subject to, the imprescriptible right of surface use in the nature of a servitude in favor of the Department of Natural Resources, including its Offices and Commissions, for the sole purpose of implementing, constructing, servicing and maintaining approved coastal zone management



and/or restoration projects. Utilization of any and all rights derived under this lease by the mineral lessee, its agents, successors or assigns, shall not interfere with nor hinder the reasonable surface use by the Department of Natural Resources, its Offices or Commissions, as herein above reserved.

NOTE: The Department of Wildlife and Fisheries has designated certain areas in the coastal waters of the State of Louisiana as Oyster Seed Bed Areas. The exact location of those Seed Bed Areas must be obtained from the Department of Wildlife and Fisheries and any work done under a mineral lease from the State of Louisiana may necessarily be conducted in conformity with the rules and regulations promulgated by the said Department of Wildlife and Fisheries for Oyster Seed Bed Areas.

Applicant: KARE-SUE ENERGY, INC.

Bidder	Cash Payment	Price/Acre	Rental	Oil	Gas	Other





BLOCK LB0012

MISSISSIPPI SOUND

BLIND PASS

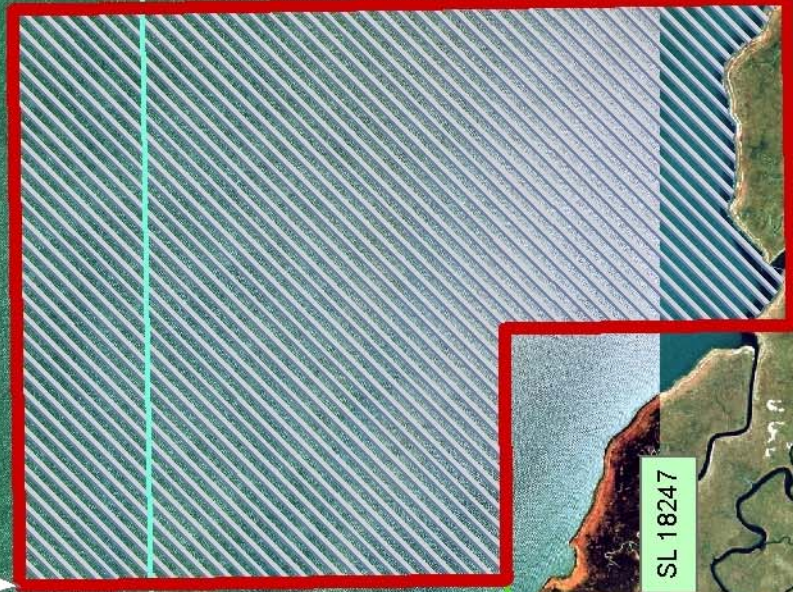


T11S - R18E

SL 18251

ST BERNARD PARISH

NORTH LAKE BORGNE AREA



MOSQUITO INLET

P.O.B.  
X=2,589,250.00  
Y=522,996.00

SL 18247

LE PETIT PASS

T11S - R17E

SL 18250

SL 18277

LAKE BORGNE

BLOCK LB0007

SL 18254