

TRACT 37508 - Portion of Block 22, Eugene Island Area, Revised, Iberia Parish, Louisiana

The beds and bottoms of all water bodies belonging to the State of Louisiana located in Block 22, Eugene Island Area, Revised, together with any present lands formed by accretion to the shoreline or islands formed therein, located in Iberia Parish, Louisiana, owned by and not presently under mineral lease as of July 13, 2005, from the State of Louisiana, the geographical area of which is more fully described as follows: Beginning at the Northwest corner of Block 22, Eugene Island Area, Revised, having Coordinates of X = 1,879,822.72 and Y = 255,394.00; thence East 12,572.93 feet along the North line of said Block 22 to a point on the Three Mile Line derived from the June 16, 1975 United States vs. Louisiana No. 9 Original, having Coordinates of X = 1,892,395.65 and Y = 255,394.00; thence along said Three Mile Line Southeasterly along an arc whose center is X = 1,882,306 and Y = 270,590 and a radius of 18,240.60 feet to a point on the West line of said Block 22 having Coordinates of X = 1,879,822.72 and Y = 252,519.23; thence North 2,874.77 feet along the West line of said Block 22 to the point of beginning, containing **648.94 acres, LESS AND EXCEPT** that portion thereof, if any, lying seaward of the line three nautical miles from the coast line of Louisiana, as said three mile line has been decreed by the Supreme Court of the United States, as determined by a Special Master appointed therein, in litigation styled **United States v. State of Louisiana et al No. 9 Original**, in 1975, all as more particularly outlined on a plat in the Office of Mineral Resources, Department of Natural Resources. All bearings, distances and coordinates are based on the Louisiana Coordinate System of 1927, (South Zone).

NOTE: The above description of the Tract nominated for lease has been provided and corrected, where required, exclusively by the nomination party. Any mineral lease selected from this Tract and awarded by the Louisiana State Mineral Board shall be without warranty of any kind, either express, implied, or statutory, including, but not limited to, the implied warranties of merchantability and fitness for a particular purpose. Should the mineral lease awarded by the Louisiana State Mineral Board be subsequently modified, cancelled or abrogated due to the existence of conflicting leases, operating agreements, private claims or other future obligations or conditions which may affect all or any portion of the leased Tract, it shall not relieve the Lessee of the obligation to pay any bonus due thereon to the Louisiana State Mineral Board, nor shall the Louisiana State Mineral Board be obligated to refund any consideration paid by the Lessor prior to such modification, cancellation, or abrogation, including, but not limited to, bonuses, rentals and royalties.

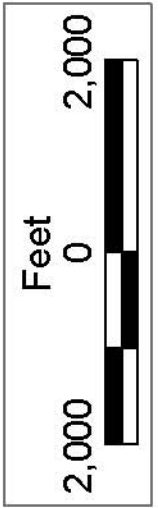
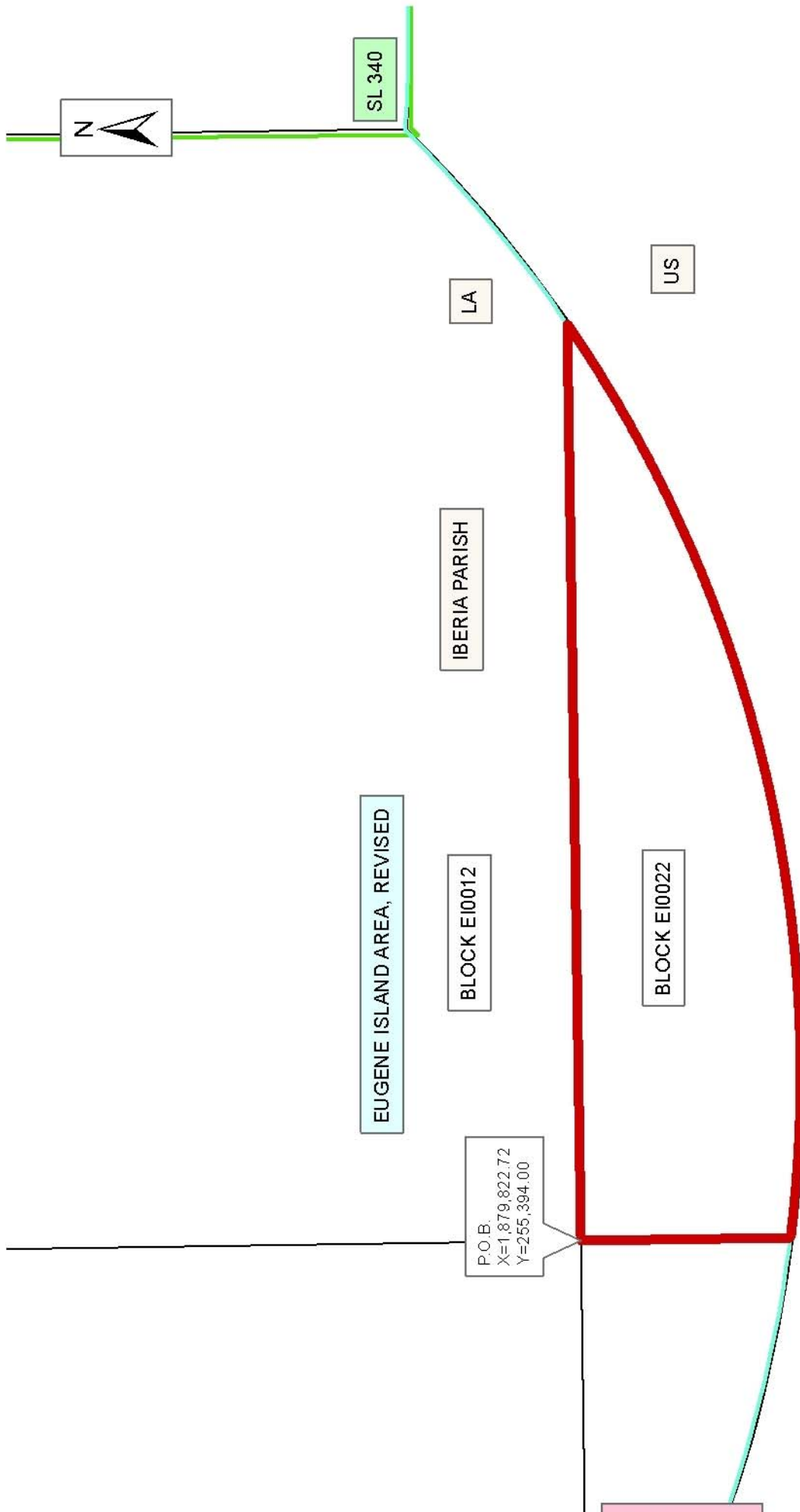
NOTE: The State of Louisiana does hereby reserve, and this lease shall be subject to, the imprescriptible right of surface use in the nature of a servitude in favor of the Department of Natural Resources, including its Offices and Commissions, for the sole purpose of implementing, constructing, servicing and maintaining approved coastal zone management and/or restoration projects. Utilization of any and all rights derived

under this lease by the mineral lessee, its agents, successors or assigns, shall not interfere with nor hinder the reasonable surface use by the Department of Natural Resources, its Offices or Commissions, as herein above reserved.

NOTE: The Department of Wildlife and Fisheries has designated certain areas in the coastal waters of the State of Louisiana as Oyster Seed Bed Areas. The exact location of those Seed Bed Areas must be obtained from the Department of Wildlife and Fisheries and any work done under a mineral lease from the State of Louisiana may necessarily be conducted in conformity with the rules and regulations promulgated by the said Department of Wildlife and Fisheries for Oyster Seed Bed Areas.

Applicant: FLIGHT PETROLEUM

Bidder	Cash Payment	Price/Acre	Rental	Oil	Gas	Other



TRACT 37509 - Portion of Block 23, Eugene Island Area, Revised, Iberia Parish, Louisiana

The beds and bottoms of all water bodies belonging to the State of Louisiana located in Block 23, Eugene Island Area, Revised, together with any present lands formed by accretion to the shoreline or islands formed therein, located in Iberia Parish, Louisiana, owned by and not presently under mineral lease as of July 13, 2005, from the State of Louisiana, the geographical area of which is more fully described as follows: Beginning at the Northeast corner of Block 23, Eugene Island Area, Revised, having Coordinates of X = 1,879,822.72 and Y = 255,394.00; thence South 2,874.77 feet along the East line of said Block 23 to a point on the Three Mile Line derived from the June 16, 1975 United States vs. Louisiana No. 9 Original, having Coordinates of X = 1,879,822.72 and Y = 252,519.23; thence along said Three Mile Line Northwesterly along an arc whose center is X = 1,882,306. and Y = 270,590 and a radius of 18,240.60 feet to a point on the North line of said Block 23, having Coordinates of X = 1,872,216.35 and Y = 255,394.00; thence East 7,606.37 feet along the North line of Block 23 to the point of beginning, containing **308.25 acres, LESS AND EXCEPT** that portion thereof, if any, lying seaward of the line three nautical miles from the coast line of Louisiana, as said three mile line has been decreed by the Supreme Court of the United States, as determined by a Special Master appointed therein, in litigation styled **United States v. State of Louisiana et al No. 9 Original**, in 1975, all as more particularly outlined on a plat in the Office of Mineral Resources, Department of Natural Resources. All bearings, distances and coordinates are based on the Louisiana Coordinate System of 1927, (South Zone).

NOTE: The above description of the Tract nominated for lease has been provided and corrected, where required, exclusively by the nomination party. Any mineral lease selected from this Tract and awarded by the Louisiana State Mineral Board shall be without warranty of any kind, either express, implied, or statutory, including, but not limited to, the implied warranties of merchantability and fitness for a particular purpose. Should the mineral lease awarded by the Louisiana State Mineral Board be subsequently modified, cancelled or abrogated due to the existence of conflicting leases, operating agreements, private claims or other future obligations or conditions which may affect all or any portion of the leased Tract, it shall not relieve the Lessee of the obligation to pay any bonus due thereon to the Louisiana State Mineral Board, nor shall the Louisiana State Mineral Board be obligated to refund any consideration paid by the Lessor prior to such modification, cancellation, or abrogation, including, but not limited to, bonuses, rentals and royalties.

NOTE: The State of Louisiana does hereby reserve, and this lease shall be subject to, the imprescriptible right of surface use in the nature of a servitude in favor of the Department of Natural Resources, including its Offices and Commissions, for the sole purpose of implementing, constructing, servicing and maintaining approved coastal zone management and/or restoration projects. Utilization of any and all rights derived

under this lease by the mineral lessee, its agents, successors or assigns, shall not interfere with nor hinder the reasonable surface use by the Department of Natural Resources, its Offices or Commissions, as herein above reserved.

NOTE: The Department of Wildlife and Fisheries has designated certain areas in the coastal waters of the State of Louisiana as Oyster Seed Bed Areas. The exact location of those Seed Bed Areas must be obtained from the Department of Wildlife and Fisheries and any work done under a mineral lease from the State of Louisiana may necessarily be conducted in conformity with the rules and regulations promulgated by the said Department of Wildlife and Fisheries for Oyster Seed Bed Areas.

Applicant: FLIGHT PETROLEUM

Bidder	Cash Payment	Price/Acre	Rental	Oil	Gas	Other



IBERIA PARISH

EUGENE ISLAND
AREA, REVISED

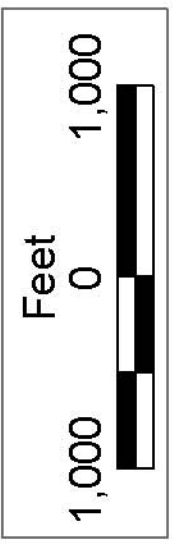
BLOCK E10011

BLOCK E10023

LA

P.O.B.
X=1,879,822.72
Y=255,394.00

US



TRACT 37510 - Portion of Block 4, Bay Marchand Area, Lafourche Parish, Louisiana

The beds and bottoms of all water bodies belonging to the State of Louisiana located in Block 4, Bay Marchand Area, together with any present lands formed by accretion to the shoreline or islands formed therein, located in Lafourche Parish, Louisiana, owned by and not presently under mineral lease as of July 13, 2005, from the State of Louisiana, the geographical area of which is more fully described as follows: Beginning on the Northeast corner of State Lease No. 16256, said point also being located in Block 4, Bay Marchand Area, having Coordinates of X = 2,355,500.00 and Y = 144,368.53; thence East 2,750.00 feet to a point having Coordinates of X = 2,358,250.00 and Y = 144,368.53; thence South 30 degrees 32 minutes 31 seconds West 2459.81 feet to a point having Coordinates of X = 2,357,000.00 and Y = 142,250.00; thence West 1,500.00 feet to a point on the East line of said State Lease No. 16256 having Coordinates of X = 2,355,500.00 and Y = 142,250.00; thence North 2,118.53 feet along the East line of said State Lease No. 16256 to the point of beginning, containing approximately **103.35 acres**, all as more particularly outlined on a plat on file in the Office of Mineral Resources, Department of Natural Resources. All bearings, distances and coordinates are based on Louisiana Coordinate System of 1927, (North or South Zone).

NOTE: The above description of the Tract nominated for lease has been provided and corrected, where required, exclusively by the nomination party. Any mineral lease selected from this Tract and awarded by the Louisiana State Mineral Board shall be without warranty of any kind, either express, implied, or statutory, including, but not limited to, the implied warranties of merchantability and fitness for a particular purpose. Should the mineral lease awarded by the Louisiana State Mineral Board be subsequently modified, cancelled or abrogated due to the existence of conflicting leases, operating agreements, private claims or other future obligations or conditions which may affect all or any portion of the leased Tract, it shall not relieve the Lessee of the obligation to pay any bonus due thereon to the Louisiana State Mineral Board, nor shall the Louisiana State Mineral Board be obligated to refund any consideration paid by the Lessor prior to such modification, cancellation, or abrogation, including, but not limited to, bonuses, rentals and royalties.

NOTE: The State of Louisiana does hereby reserve, and this lease shall be subject to, the imprescriptible right of surface use in the nature of a servitude in favor of the Department of Natural Resources, including its Offices and Commissions, for the sole purpose of implementing, constructing, servicing and maintaining approved coastal zone management and/or restoration projects. Utilization of any and all rights derived under this lease by the mineral lessee, its agents, successors or assigns, shall not interfere with nor hinder the reasonable surface use by the Department of Natural Resources, its Offices or Commissions, as herein above reserved.

NOTE: It appears, according to our records, that a portion of this Tract is located within the restrictive safety fairway area as set out by the Corps of Engineers, U.S. Army and/or the restrictive anchorage area as set out by the U.S. Coast Guard.

Applicant: ANCHOR LAND & EXPLORATION COMPANY, L.L.C.

Bidder	Cash Payment	Price/Acre	Rental	Oil	Gas	Other

