

TRACT 37498 - Portion of Block 49, West Cameron Area, Revised, Cameron Parish, Louisiana

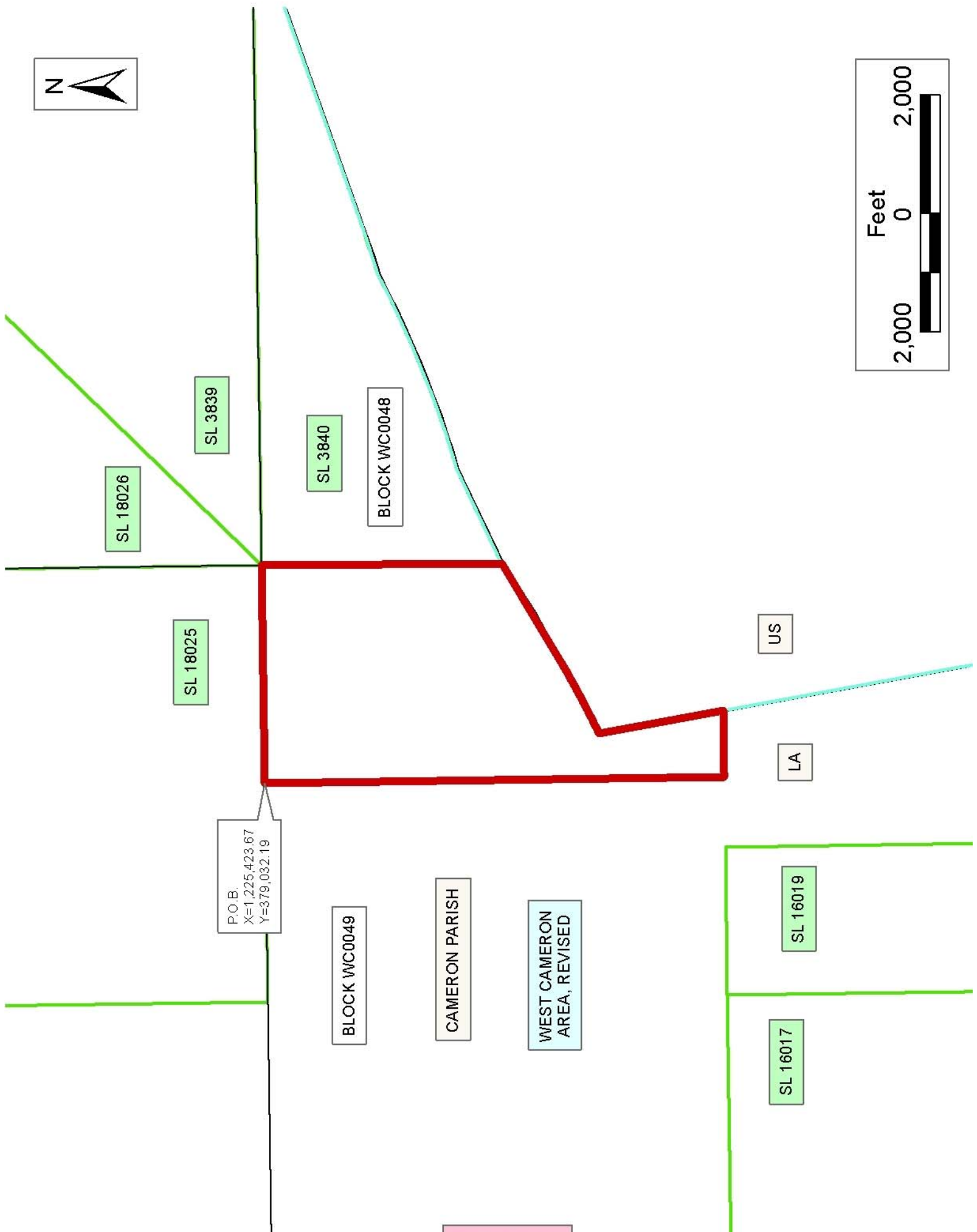
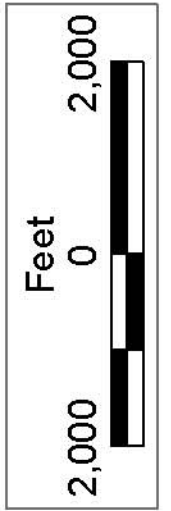
The beds and bottoms of all water bodies belonging to the State of Louisiana located in Block 49, West Cameron Area, Revised, together with any present lands formed by accretion to the shoreline or islands formed therein, located in Cameron Parish, Louisiana, owned by and not presently under mineral lease as of July 13, 2005, from the State of Louisiana, the geographical area of which is more fully described as follows: Beginning at a point on the North line of Block 49, West Cameron Area, Revised, having Coordinates of X = 1,225,423.67 and Y = 379,032.19; thence East 3,689.51 feet along the North line of said Block 49 to its Northeast corner having Coordinates of X = 1,229,113.18 and Y = 379,032.19; thence South 4,035.61 feet along the East line of said Block 49 to a point on the three mile line as set out in the June, 1975 decree of the Supreme Court having Coordinates of X = 1,229,113.18 and Y = 374,996.58; thence along the said three mile line the following courses: Southwesterly on a straight line to a point having Coordinates of X = 1,229,077 and Y = 374,980, Southwesterly on an arc having a radius of 18,240.60 feet and a center at X = 1,219,065 and Y = 390,227 to a point having Coordinates of X = 1,227,371 and Y = 373,987, Southwesterly on a straight line to a point having Coordinates of X = 1,226,185 and Y = 373,381 and Southeasterly on a straight line to a point having Coordinates of X = 1,226,540.17 and Y = 371,274.14; thence West 1,116.50 feet to a point having Coordinates of X = 1,225,423.67 and Y = 371,274.14; thence North 7,758.05 feet to the point of beginning, containing approximately **472.11 acres, LESS AND EXCEPT** that portion thereof, if any, lying seaward of the line three nautical miles from the coast line of Louisiana, as said three mile line has been decreed by the Supreme Court of the United States, as determined by a Special Master appointed therein, in litigation styled **United States v. State of Louisiana et al No. 9 Original**, in 1975, all as more particularly outlined on a plat in the Office of Mineral Resources, Department of Natural Resources. All bearings, distances and coordinates are based on the Louisiana Coordinate System of 1927, (South Zone).

NOTE: The above description of the Tract nominated for lease has been provided and corrected, where required, exclusively by the nomination party. Any mineral lease selected from this Tract and awarded by the Louisiana State Mineral Board shall be without warranty of any kind, either express, implied, or statutory, including, but not limited to, the implied warranties of merchantability and fitness for a particular purpose. Should the mineral lease awarded by the Louisiana State Mineral Board be subsequently modified, cancelled or abrogated due to the existence of conflicting leases, operating agreements, private claims or other future obligations or conditions which may affect all or any portion of the leased Tract, it shall not relieve the Lessee of the obligation to pay any bonus due thereon to the Louisiana State Mineral Board, nor shall the Louisiana State Mineral Board be obligated to refund any consideration paid by the Lessor prior to such modification, cancellation, or abrogation, including, but not limited to, bonuses, rentals and royalties.

NOTE: The State of Louisiana does hereby reserve, and this lease shall be subject to, the imprescriptible right of surface use in the nature of a servitude in favor of the Department of Natural Resources, including its Offices and Commissions, for the sole purpose of implementing, constructing, servicing and maintaining approved coastal zone management and/or restoration projects. Utilization of any and all rights derived under this lease by the mineral lessee, its agents, successors or assigns, shall not interfere with nor hinder the reasonable surface use by the Department of Natural Resources, its Offices or Commissions, as herein above reserved.

Applicant: GULF COAST ENERGY CORPORATION

Bidder	Cash Payment	Price/Acre	Rental	Oil	Gas	Other



TRACT 37499 - Portion of Block 49, West Cameron Area, Revised, Cameron Parish, Louisiana

The beds and bottoms of all water bodies belonging to the State of Louisiana located in Block 49, West Cameron Area, Revised, together with any present lands formed by accretion to the shoreline or islands formed therein, located in Cameron Parish, Louisiana, owned by and not presently under mineral lease as of July 13, 2005, from the State of Louisiana, the geographical area of which is more fully described as follows: Beginning at the Northwest corner of Block 49, West Cameron Area, Revised, having Coordinates of X = 1,214,355.14 and Y = 379,032.19; thence East 3,689.51 feet along the North boundary of said Block 49 to a point having Coordinates of X = 1,218,044.65 and Y = 379,032.19; thence South 7,758.05 feet to a point on the North boundary of State Lease No. 16017 having Coordinates of X = 1,218,044.65 and Y = 371,274.14; thence West 689.51 feet along the North boundary of said State Lease No. 16017 to its Northwest corner, also being the Northeast corner of State Lease No. 16185 having Coordinates of X = 1,217,355.14 and Y = 371,274.14; thence West 1,100.00 feet along the North boundary of said State Lease No. 16185 to its Northwest corner, also being the Northeast corner of State Lease No. 16496 having Coordinates of X = 1,216,255.14 and Y = 371,274.14; thence West 1,900.00 feet along the North boundary of said State Lease No. 16496 to its Northwest corner located on the West boundary of said Block 49 having Coordinates of X = 1,214,355.14 and Y = 371,274.14; thence North 7,758.05 feet along the West boundary of said Block 49 to the point of beginning, containing approximately **657.10 acres**, all as more particularly outlined on a plat on file in the Office of Mineral Resources, Department of Natural Resources. All bearings, distances and coordinates are based on Louisiana Coordinate System of 1927, (North or South Zone).

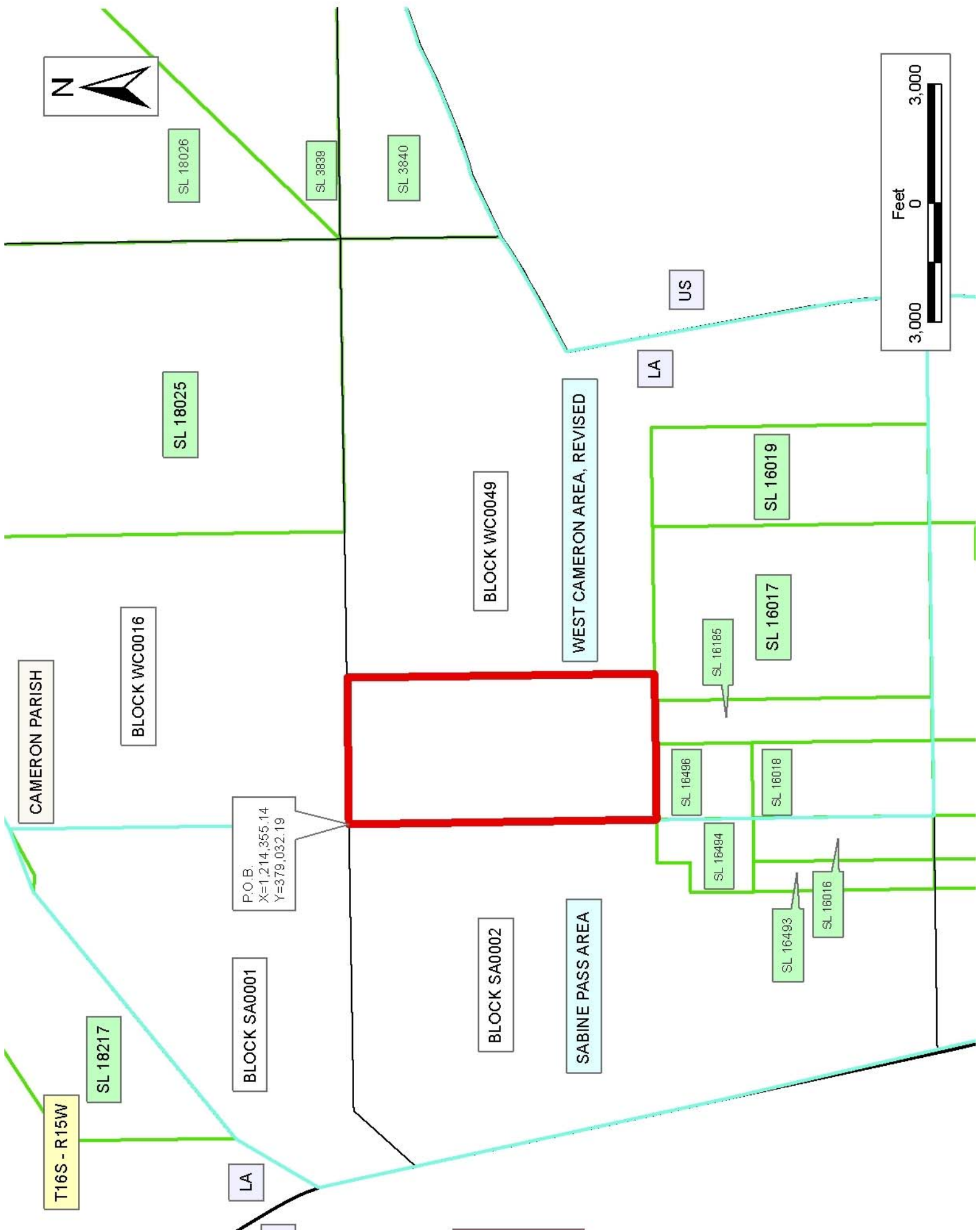
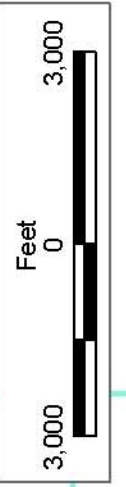
NOTE: The above description of the Tract nominated for lease has been provided and corrected, where required, exclusively by the nomination party. Any mineral lease selected from this Tract and awarded by the Louisiana State Mineral Board shall be without warranty of any kind, either express, implied, or statutory, including, but not limited to, the implied warranties of merchantability and fitness for a particular purpose. Should the mineral lease awarded by the Louisiana State Mineral Board be subsequently modified, cancelled or abrogated due to the existence of conflicting leases, operating agreements, private claims or other future obligations or conditions which may affect all or any portion of the leased Tract, it shall not relieve the Lessee of the obligation to pay any bonus due thereon to the Louisiana State Mineral Board, nor shall the Louisiana State Mineral Board be obligated to refund any consideration paid by the Lessor prior to such modification, cancellation, or abrogation, including, but not limited to, bonuses, rentals and royalties.

NOTE: The State of Louisiana does hereby reserve, and this lease shall be subject to, the imprescriptible right of surface use in the nature of a servitude in favor of the Department of Natural Resources, including its Offices and Commissions, for the sole purpose of implementing,

constructing, servicing and maintaining approved coastal zone management and/or restoration projects. Utilization of any and all rights derived under this lease by the mineral lessee, its agents, successors or assigns, shall not interfere with nor hinder the reasonable surface use by the Department of Natural Resources, its Offices or Commissions, as herein above reserved.

Applicant: GULF COAST ENERGY CORPORATION

Bidder	Cash Payment	Price/Acre	Rental	Oil	Gas	Other



TRACT 37500 - Portion of Block 49, West Cameron Area, Revised, Cameron Parish, Louisiana

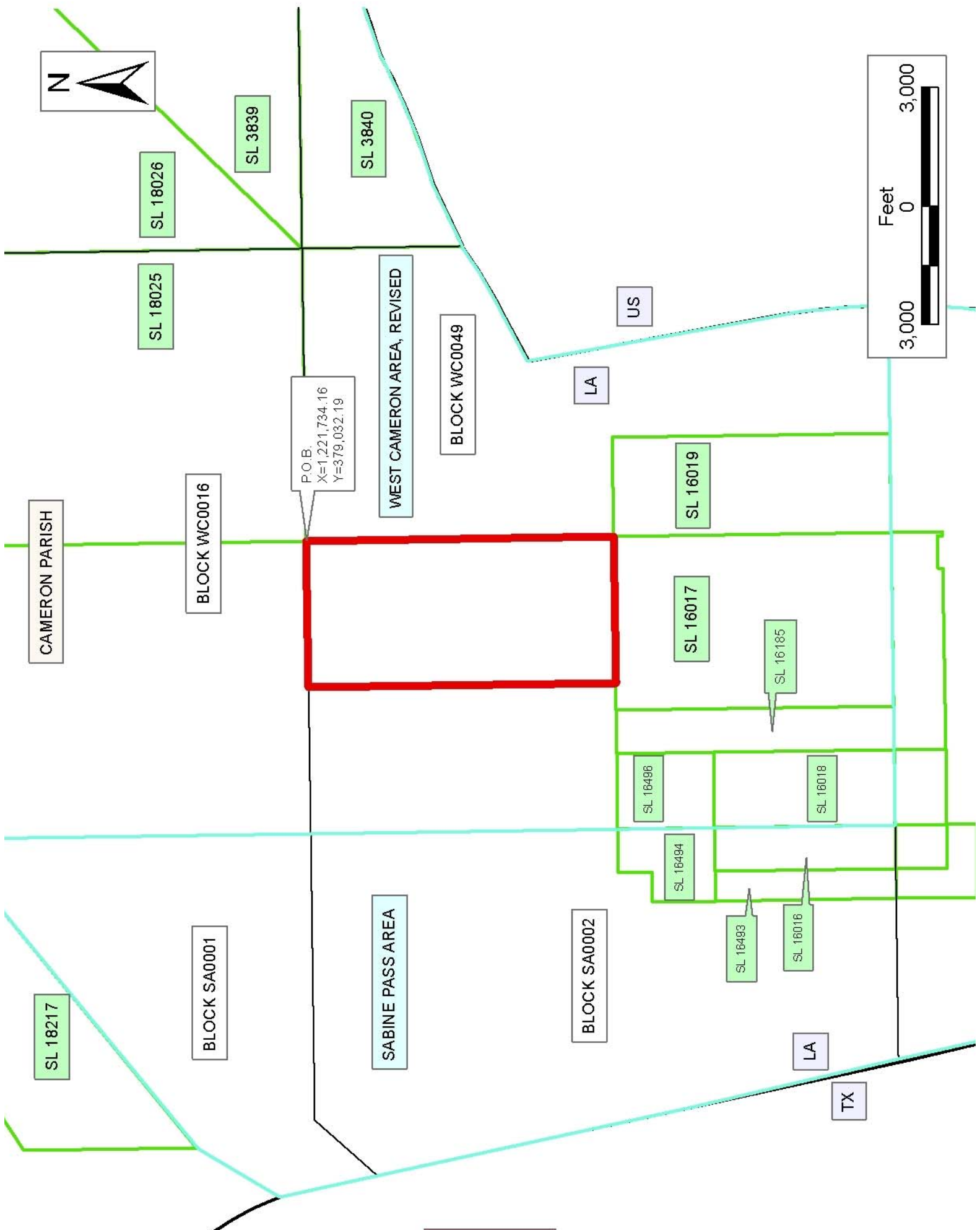
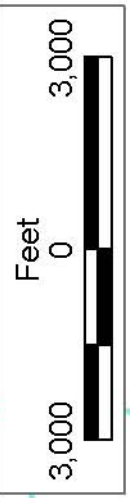
The beds and bottoms of all water bodies belonging to the State of Louisiana located in Block 49, West Cameron Area, Revised, together with any present lands formed by accretion to the shoreline or islands formed therein, located in Cameron Parish, Louisiana, owned by and not presently under mineral lease as of July 13, 2005, from the State of Louisiana, the geographical area of which is more fully described as follows: Beginning at a point on the North boundary of Block 49, West Cameron Area, Revised, having Coordinates of X = 1,221,734.16 and Y = 379,032.19; thence South 7,758.05 feet to the Northeast corner of State Lease No. 16017, also being the Northwest corner of State Lease No. 16019, having Coordinates of X = 1,221,734.16 and Y = 371,274.14; thence West 3,689.51 feet along the North boundary of said State Lease No. 16017 to a point having Coordinates of X = 1,218,044.65 and Y = 371,274.14; thence North 7,758.05 feet to a point on the North boundary of said Block 49 having Coordinates of X = 1,218,044.65 and Y = 379,032.19; thence East 3,689.51 feet along the North boundary of said Block 49 to the point of beginning, containing approximately **657.10 acres**, all as more particularly outlined on a plat on file in the Office of Mineral Resources, Department of Natural Resources. All bearings, distances and coordinates are based on Louisiana Coordinate System of 1927, (North or South Zone).

NOTE: The above description of the Tract nominated for lease has been provided and corrected, where required, exclusively by the nomination party. Any mineral lease selected from this Tract and awarded by the Louisiana State Mineral Board shall be without warranty of any kind, either express, implied, or statutory, including, but not limited to, the implied warranties of merchantability and fitness for a particular purpose. Should the mineral lease awarded by the Louisiana State Mineral Board be subsequently modified, cancelled or abrogated due to the existence of conflicting leases, operating agreements, private claims or other future obligations or conditions which may affect all or any portion of the leased Tract, it shall not relieve the Lessee of the obligation to pay any bonus due thereon to the Louisiana State Mineral Board, nor shall the Louisiana State Mineral Board be obligated to refund any consideration paid by the Lessor prior to such modification, cancellation, or abrogation, including, but not limited to, bonuses, rentals and royalties.

NOTE: The State of Louisiana does hereby reserve, and this lease shall be subject to, the imprescriptible right of surface use in the nature of a servitude in favor of the Department of Natural Resources, including its Offices and Commissions, for the sole purpose of implementing, constructing, servicing and maintaining approved coastal zone management and/or restoration projects. Utilization of any and all rights derived under this lease by the mineral lessee, its agents, successors or assigns, shall not interfere with nor hinder the reasonable surface use by the Department of Natural Resources, its Offices or Commissions, as herein above reserved.

Applicant: GULF COAST ENERGY CORPORATION

Bidder	Cash Payment	Price/Acre	Rental	Oil	Gas	Other



TRACT 37501 - Portion of Block 2, Sabine Pass Area, Cameron Parish, Louisiana

The beds and bottoms of all water bodies belonging to the State of Louisiana located in Block 2, Sabine Pass Area, together with any present lands formed by accretion to the shoreline or islands formed therein, located in Cameron Parish, Louisiana, owned by and not presently under mineral lease as of July 13, 2005, from the State of Louisiana, the geographical area of which is more fully described as follows: Beginning at the Northeast corner of Block 2, Sabine Pass Area, having Coordinates of X = 1,214,355.14 and Y = 379,032.19; thence South 7,758.05 feet along the East boundary of said Block 2 to the Northeast corner of State Lease No. 16494 having Coordinates of X = 1,214,355.14 and Y = 371,274.14; thence West 1,100.00 feet along the North boundary of said State Lease No. 16494 to its most Northern Northwest corner having Coordinates of X = 1,213,255.14 and Y = 371,274.14; thence West 3,384.65 feet to a point having Coordinates of X = 1,209,870.49 and Y = 371,274.14; thence North 7,758.05 feet to a point on the North boundary of said Block 2 having Coordinates of X = 1,209,870.49 and Y = 379,032.19; thence East 4,484.65 feet along the North boundary of said Block 2 to the point of beginning, containing approximately **798.72 acres**, all as more particularly outlined on a plat on file in the Office of Mineral Resources, Department of Natural Resources. All bearings, distances and coordinates are based on Louisiana Coordinate System of 1927, (North or South Zone).

NOTE: The above description of the Tract nominated for lease has been provided and corrected, where required, exclusively by the nomination party. Any mineral lease selected from this Tract and awarded by the Louisiana State Mineral Board shall be without warranty of any kind, either express, implied, or statutory, including, but not limited to, the implied warranties of merchantability and fitness for a particular purpose. Should the mineral lease awarded by the Louisiana State Mineral Board be subsequently modified, cancelled or abrogated due to the existence of conflicting leases, operating agreements, private claims or other future obligations or conditions which may affect all or any portion of the leased Tract, it shall not relieve the Lessee of the obligation to pay any bonus due thereon to the Louisiana State Mineral Board, nor shall the Louisiana State Mineral Board be obligated to refund any consideration paid by the Lessor prior to such modification, cancellation, or abrogation, including, but not limited to, bonuses, rentals and royalties.

NOTE: The State of Louisiana does hereby reserve, and this lease shall be subject to, the imprescriptible right of surface use in the nature of a servitude in favor of the Department of Natural Resources, including its Offices and Commissions, for the sole purpose of implementing, constructing, servicing and maintaining approved coastal zone management and/or restoration projects. Utilization of any and all rights derived under this lease by the mineral lessee, its agents, successors or assigns, shall not interfere with nor hinder the reasonable surface use by the

Department of Natural Resources, its Offices or Commissions, as herein above reserved.

Applicant: GULF COAST ENERGY CORPORATION

Bidder	Cash Payment	Price/Acre	Rental	Oil	Gas	Other



SL 18025

P.O.B.
X=1,214,355.14
Y=379,032.19

WEST CAMERON
AREA, REVISED

BLOCK WC0049

SL 16019

SL 16185

SL 16017

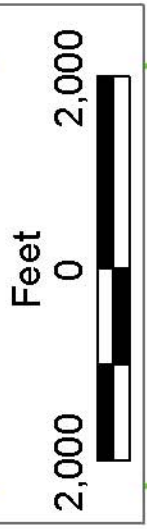
SL 16496

SL 16016

SL 16493

SL 16494

SL 16018



SABINE PASS AREA

CAMERON PARISH

BLOCK SA0002

LA

TX

SL 18217

TRACT 37502 - Portion of Block 49, West Cameron Area, Revised, Cameron Parish, Louisiana

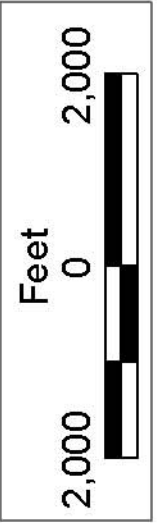
The beds and bottoms of all water bodies belonging to the State of Louisiana located in Block 49, West Cameron Area, Revised, together with any present lands formed by accretion to the shoreline or islands formed therein, located in Cameron Parish, Louisiana, owned by and not presently under mineral lease as of July 13, 2005, from the State of Louisiana, the geographical area of which is more fully described as follows: Beginning at a point within Block 49, West Cameron Area, Revised, also being the Northeast corner of State Lease No. 16019 having Coordinates of X = 1,224,234.16 and Y = 371,274.14; thence East 2,306.01 feet to a point on the three mile line as set out in the June, 1975 decree of the Supreme Court having Coordinates of X = 1,226,540.17 and Y = 371,274.14; thence along the said three mile line the following courses: Southeasterly on a straight line to a point having Coordinates of X = 1,227,214 and Y = 367,277 and Southeasterly on an arc having a radius of 18,240.60 feet and a center at X = 1,209,227 and Y = 364,245 to a point on the South boundary of said Block 49 having Coordinates of X = 1,227,467.71 and Y = 364,274.14; thence West 3,233.55 feet along the South boundary of said Block 49 to the Southeast corner of said State Lease No. 16019 having Coordinates of X = 1,224,234.16 and Y = 364,274.14; thence North 7,000.00 feet along the East boundary of said State Lease No. 16019 to the point of beginning, containing approximately **459.56 acres, LESS AND EXCEPT** that portion thereof, if any, lying seaward of the line three nautical miles from the coast line of Louisiana, as said three mile line has been decreed by the Supreme Court of the United States, as determined by a Special Master appointed therein, in litigation styled **United States v. State of Louisiana et al No. 9 Original**, in 1975, all as more particularly outlined on a plat in the Office of Mineral Resources, Department of Natural Resources. All bearings, distances and coordinates are based on the Louisiana Coordinate System of 1927, (South Zone).

NOTE: The above description of the Tract nominated for lease has been provided and corrected, where required, exclusively by the nomination party. Any mineral lease selected from this Tract and awarded by the Louisiana State Mineral Board shall be without warranty of any kind, either express, implied, or statutory, including, but not limited to, the implied warranties of merchantability and fitness for a particular purpose. Should the mineral lease awarded by the Louisiana State Mineral Board be subsequently modified, cancelled or abrogated due to the existence of conflicting leases, operating agreements, private claims or other future obligations or conditions which may affect all or any portion of the leased Tract, it shall not relieve the Lessee of the obligation to pay any bonus due thereon to the Louisiana State Mineral Board, nor shall the Louisiana State Mineral Board be obligated to refund any consideration paid by the Lessor prior to such modification, cancellation, or abrogation, including, but not limited to, bonuses, rentals and royalties.

NOTE: The State of Louisiana does hereby reserve, and this lease shall be subject to, the imprescriptible right of surface use in the nature of a servitude in favor of the Department of Natural Resources, including its Offices and Commissions, for the sole purpose of implementing, constructing, servicing and maintaining approved coastal zone management and/or restoration projects. Utilization of any and all rights derived under this lease by the mineral lessee, its agents, successors or assigns, shall not interfere with nor hinder the reasonable surface use by the Department of Natural Resources, its Offices or Commissions, as herein above reserved.

Applicant: GULF COAST ENERGY CORPORATION

Bidder	Cash Payment	Price/Acre	Rental	Oil	Gas	Other



US

LA

CAMERON PARISH

P.O.B.
X=1,224,234.16
Y=371,274.14

SL 16019

BLOCK WC0049

SL 16017

WEST CAMERON
AREA, REVISED

SL 16186

BLOCK SA0003

SABINE PASS AREA

SL 16185

TRACT 37503 - Portion of Block 11, Eugene Island Area, Revised, Iberia Parish, Louisiana

The beds and bottoms of all water bodies belonging to the State of Louisiana located in Block 11, Eugene Island Area, Revised, together with any present lands formed by accretion to the shoreline or islands formed therein, located in Iberia Parish, Louisiana, owned by and not presently under mineral lease as of July 13, 2005, from the State of Louisiana, the geographical area of which is more fully described as follows: Beginning at the Northeast corner of Block 11, Eugene Island Area, Revised, having Coordinates of X = 1,879,822.72 and Y = 269,892.58; thence South 14,498.58 feet along the East line of said Block 11 to its Southeast corner having Coordinates of X = 1,879,822.72 and Y = 255,394.00; thence West 5,986.72 feet along the South line of said Block 11 to a point having Coordinates of X = 1,873,836.00 and Y = 255,394.00; thence North 10,071.00 feet to the Southeast corner of Geophysical Agreement No. 20031001 having Coordinates of X = 1,873,836.00 and Y = 265,465.00; thence North 4,427.58 feet along the East line of said Geophysical Agreement No. 20031001 to a point on the North line of said Block 11 having Coordinates of X = 1,873,836.00 and Y = 269,892.58; thence East 5,986.72 feet along the North line of said Block 11 to the point of beginning, containing approximately **1,992.63 acres**, all as more particularly outlined on a plat on file in the Office of Mineral Resources, Department of Natural Resources. All bearings, distances and coordinates are based on Louisiana Coordinate System of 1927, (North or South Zone).

NOTE: The above description of the Tract nominated for lease has been provided and corrected, where required, exclusively by the nomination party. Any mineral lease selected from this Tract and awarded by the Louisiana State Mineral Board shall be without warranty of any kind, either express, implied, or statutory, including, but not limited to, the implied warranties of merchantability and fitness for a particular purpose. Should the mineral lease awarded by the Louisiana State Mineral Board be subsequently modified, cancelled or abrogated due to the existence of conflicting leases, operating agreements, private claims or other future obligations or conditions which may affect all or any portion of the leased Tract, it shall not relieve the Lessee of the obligation to pay any bonus due thereon to the Louisiana State Mineral Board, nor shall the Louisiana State Mineral Board be obligated to refund any consideration paid by the Lessor prior to such modification, cancellation, or abrogation, including, but not limited to, bonuses, rentals and royalties.

NOTE: The State of Louisiana does hereby reserve, and this lease shall be subject to, the imprescriptible right of surface use in the nature of a servitude in favor of the Department of Natural Resources, including its Offices and Commissions, for the sole purpose of implementing, constructing, servicing and maintaining approved coastal zone management and/or restoration projects. Utilization of any and all rights derived under this lease by the mineral lessee, its agents, successors or assigns, shall not interfere with nor hinder the reasonable surface use by the

Department of Natural Resources, its Offices or Commissions, as herein above reserved.

NOTE: The Department of Wildlife and Fisheries has designated certain areas in the coastal waters of the State of Louisiana as Oyster Seed Bed Areas. The exact location of those Seed Bed Areas must be obtained from the Department of Wildlife and Fisheries and any work done under a mineral lease from the State of Louisiana may necessarily be conducted in conformity with the rules and regulations promulgated by the said Department of Wildlife and Fisheries for Oyster Seed Bed Areas.

Applicant: FLIGHT PETROLEUM

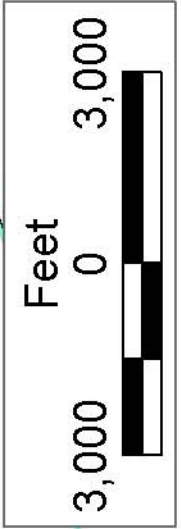
Bidder	Cash Payment	Price/Acre	Rental	Oil	Gas	Other



P.O.B.
X=1,879,822.72
Y=269,892.58

IBERIA PARISH

BLOCK EI0012



GEO 20031001

EUGENE ISLAND
AREA, REVISED

BLOCK EI0011

LA

US

TRACT 37504 - Portion of Block 12, Eugene Island Area, Revised, Iberia Parish, Louisiana

The beds and bottoms of all water bodies belonging to the State of Louisiana located in Block 12, Eugene Island Area, Revised, together with any present lands formed by accretion to the shoreline or islands formed therein, located in Iberia Parish, Louisiana, owned by and not presently under mineral lease as of July 13, 2005, from the State of Louisiana, the geographical area of which is more fully described as follows: Beginning at a point on the East line of Block 12, Eugene Island Area, Revised, having Coordinates of X = 1,895,101.00 and Y = 262,550.00; thence West 15,278.28 feet to a point on the West line of said Block 12 having Coordinates of X = 1,879,822.72 and Y = 262,550.00; thence North 7,099.53 feet along the West line of said Block 12 to its Northwest corner having Coordinates of X = 1,879,822.72 and Y = 269,649.53; thence East 15,278.28 feet along the North line of said Block 12 to its Northeast corner having Coordinates of X = 1,895,101.00 and Y = 269,649.53; thence South 7,099.53 feet along the East line of said Block 12 to the point of beginning, **LESS AND EXCEPT** all those portions of State Lease No. 340 that may lie within the above described tract, containing approximately **2,490.10 acres**, all as more particularly outlined on a plat on file in the Office of Mineral Resources, Department of Natural Resources. All bearings, distances and coordinates are based on Louisiana Coordinate System of 1927, (North or South Zone).

NOTE: The above description of the Tract nominated for lease has been provided and corrected, where required, exclusively by the nomination party. Any mineral lease selected from this Tract and awarded by the Louisiana State Mineral Board shall be without warranty of any kind, either express, implied, or statutory, including, but not limited to, the implied warranties of merchantability and fitness for a particular purpose. Should the mineral lease awarded by the Louisiana State Mineral Board be subsequently modified, cancelled or abrogated due to the existence of conflicting leases, operating agreements, private claims or other future obligations or conditions which may affect all or any portion of the leased Tract, it shall not relieve the Lessee of the obligation to pay any bonus due thereon to the Louisiana State Mineral Board, nor shall the Louisiana State Mineral Board be obligated to refund any consideration paid by the Lessor prior to such modification, cancellation, or abrogation, including, but not limited to, bonuses, rentals and royalties.

NOTE: The above described tract may be in the vicinity of existing shell reefs where drilling and dredging operations must be conducted in strict conformity with the regulations adopted by the Louisiana Department of Wildlife and Fisheries and/or the U.S. Corps of Engineers, U.S. Army.

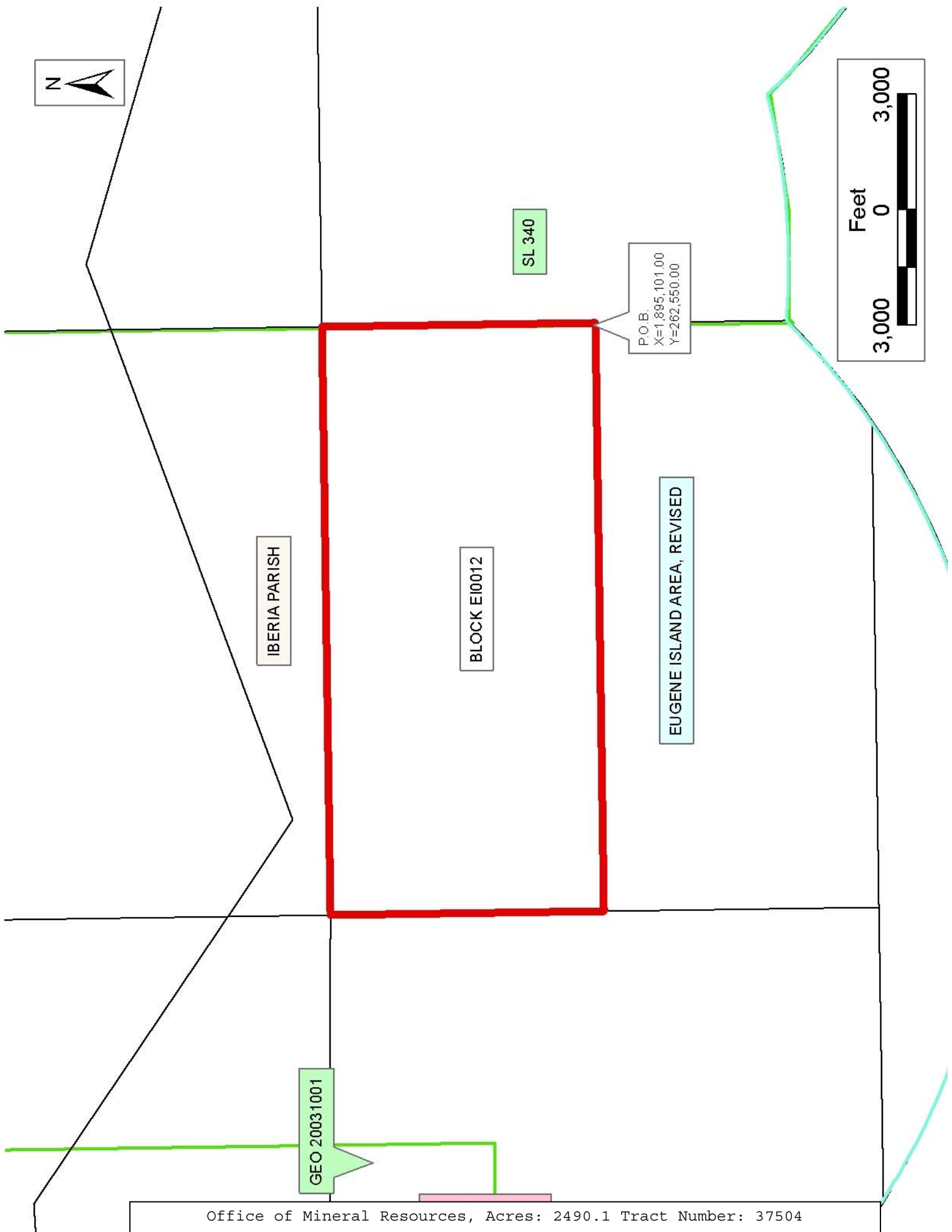
NOTE: The State of Louisiana does hereby reserve, and this lease shall be subject to, the imprescriptible right of surface use in the nature of a servitude in favor of the Department of Natural Resources, including its Offices and Commissions, for the sole purpose of implementing,

constructing, servicing and maintaining approved coastal zone management and/or restoration projects. Utilization of any and all rights derived under this lease by the mineral lessee, its agents, successors or assigns, shall not interfere with nor hinder the reasonable surface use by the Department of Natural Resources, its Offices or Commissions, as herein above reserved.

NOTE: The Department of Wildlife and Fisheries has designated certain areas in the coastal waters of the State of Louisiana as Oyster Seed Bed Areas. The exact location of those Seed Bed Areas must be obtained from the Department of Wildlife and Fisheries and any work done under a mineral lease from the State of Louisiana may necessarily be conducted in conformity with the rules and regulations promulgated by the said Department of Wildlife and Fisheries for Oyster Seed Bed Areas.

Applicant: FLIGHT PETROLEUM

Bidder	Cash Payment	Price/Acre	Rental	Oil	Gas	Other



TRACT 37505 - Portion of Blocks 10, and 11, Eugene Island Area, Revised, Iberia Parish, Louisiana

The beds and bottoms of all water bodies belonging to the State of Louisiana located in Blocks 10, and 11, Eugene Island Area, Revised, together with any present lands formed by accretion to the shoreline or islands formed therein, located in Iberia Parish, Louisiana, owned by and not presently under mineral lease as of July 13, 2005, from the State of Louisiana, the geographical area of which is more fully described as follows: Beginning at the Southeast corner of Geophysical Agreement No. 20031001, said point being within Block 11, Eugene Island Area, Revised, having Coordinates of X = 1,873,836.00 and Y = 265,465.00; thence South 10,071.00 feet to a point on the South line of said Block 11 having Coordinates of X = 1,873,836.00 and Y = 255,394.00; thence West 1,619.65 feet along the South line of said Block 11 to a point on the Three Mile Line derived from the June 16, 1975 United States vs. Louisiana No. 9 Original, having Coordinates of X = 1,872,216.35 and Y = 255,394.00; thence Northwesterly on an arc having a Radius of 18,240.60 feet and a center at X = 1,882,306 and Y = 270,590 to a point having Coordinates of X = 1,867,537 and Y = 259,884; thence Northwesterly on a arc having a Radius of 18,240.60 feet and a center at X = 1,872,418 and Y = 277,460 to a point on the common line between said Block 11 and Block 10, having Coordinates of X = 1,864,800.56 and Y = 260,886.10; thence Northwesterly on a arc having a Radius of 18,240.60 feet and a center at X = 1,872,418 and Y = 277,460 to a point on the South line of said Geophysical Agreement No. 20031001 having Coordinates of X = 1,858,676.29 and Y = 265,465.00; thence East 6,124.27 feet along the South line of said Geophysical Agreement No. 20031001, to a point on the common boundary line between said Block 10 and said Block 11 having Coordinates of X = 1,864,800.56 and Y = 265,465.00; thence East 9,035.44 feet to the point of beginning, containing **1,935.17 acres, LESS AND EXCEPT** that portion thereof, if any, lying seaward of the line three nautical miles from the coast line of Louisiana, as said three mile line has been decreed by the Supreme Court of the United States, as determined by a Special Master appointed therein, in litigation styled **United States v. State of Louisiana et al No. 9 Original**, in 1975, all as more particularly outlined on a plat in the Office of Mineral Resources, Department of Natural Resources. All bearings, distances and coordinates are based on the Louisiana Coordinate System of 1927, (South Zone).

NOTE: The above description of the Tract nominated for lease has been provided and corrected, where required, exclusively by the nomination party. Any mineral lease selected from this Tract and awarded by the Louisiana State Mineral Board shall be without warranty of any kind, either express, implied, or statutory, including, but not limited to, the implied warranties of merchantability and fitness for a particular purpose. Should the mineral lease awarded by the Louisiana State Mineral Board be subsequently modified, cancelled or abrogated due to the existence of conflicting leases, operating agreements, private claims or other future obligations or conditions which may affect all or any portion of the leased Tract, it shall not relieve the Lessee of the obligation to

pay any bonus due thereon to the Louisiana State Mineral Board, nor shall the Louisiana State Mineral Board be obligated to refund any consideration paid by the Lessor prior to such modification, cancellation, or abrogation, including, but not limited to, bonuses, rentals and royalties.

NOTE: The State of Louisiana does hereby reserve, and this lease shall be subject to, the imprescriptible right of surface use in the nature of a servitude in favor of the Department of Natural Resources, including its Offices and Commissions, for the sole purpose of implementing, constructing, servicing and maintaining approved coastal zone management and/or restoration projects. Utilization of any and all rights derived under this lease by the mineral lessee, its agents, successors or assigns, shall not interfere with nor hinder the reasonable surface use by the Department of Natural Resources, its Offices or Commissions, as herein above reserved.

NOTE: The Department of Wildlife and Fisheries has designated certain areas in the coastal waters of the State of Louisiana as Oyster Seed Bed Areas. The exact location of those Seed Bed Areas must be obtained from the Department of Wildlife and Fisheries and any work done under a mineral lease from the State of Louisiana may necessarily be conducted in conformity with the rules and regulations promulgated by the said Department of Wildlife and Fisheries for Oyster Seed Bed Areas.

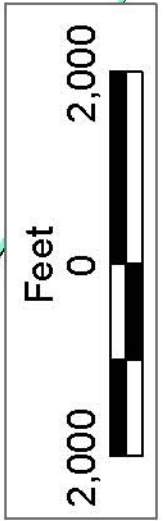
Applicant: FLIGHT PETROLEUM

Bidder	Cash Payment	Price/Acre	Rental	Oil	Gas	Other



P.O.B.
X=1,873,836.00
Y=265,465.00

GEO 20031001



IBERIA PARISH

EUGENE ISLAND AREA, REVISED

BLOCK E10011

BLOCK E10010

US

LA

TRACT 37506 - Portion of Block 10, Eugene Island Area, Revised, Iberia Parish, Louisiana

The beds and bottoms of all water bodies belonging to the State of Louisiana located in Block 10, Eugene Island Area, Revised, together with any present lands formed by accretion to the shoreline or islands formed therein, located in Iberia Parish, Louisiana, owned by and not presently under mineral lease as of July 13, 2005, from the State of Louisiana, the geographical area of which is more fully described as follows: Beginning at the intersection of the South line of Geophysical Agreement No. 20031001 and the West line of Block 10, Eugene Island Area, Revised, having Coordinates of X = 1,849,778.40 and Y = 265,465.00; thence East 8,641.66 feet along the South line of said Geophysical Agreement No. 20031001 to a point on the Three Mile Line derived from the June 16, 1975 United States vs. Louisiana No. 9 Original, having Coordinates of X = 1,858,420.06 and Y = 265,465.00; thence along said Three Mile Line along an arc having a radius of 18,240.60 feet and a center located at X = 1,843,467 and Y = 275,912 to a point on the West line of said Block 10, having Coordinates of X = 1,849,778.40 and Y = 258,798.10; thence North 6,666.90 feet along the West line of said Block 10 to the point of beginning, containing approximately **801.52 acres, LESS AND EXCEPT** that portion thereof, if any, lying seaward of the line three nautical miles from the coast line of Louisiana, as said three mile line has been decreed by the Supreme Court of the United States, as determined by a Special Master appointed therein, in litigation styled **United States v. State of Louisiana et al No. 9 Original**, in 1975, all as more particularly outlined on a plat in the Office of Mineral Resources, Department of Natural Resources. All bearings, distances and coordinates are based on the Louisiana Coordinate System of 1927, (South Zone).

NOTE: The above description of the Tract nominated for lease has been provided and corrected, where required, exclusively by the nomination party. Any mineral lease selected from this Tract and awarded by the Louisiana State Mineral Board shall be without warranty of any kind, either express, implied, or statutory, including, but not limited to, the implied warranties of merchantability and fitness for a particular purpose. Should the mineral lease awarded by the Louisiana State Mineral Board be subsequently modified, cancelled or abrogated due to the existence of conflicting leases, operating agreements, private claims or other future obligations or conditions which may affect all or any portion of the leased Tract, it shall not relieve the Lessee of the obligation to pay any bonus due thereon to the Louisiana State Mineral Board, nor shall the Louisiana State Mineral Board be obligated to refund any consideration paid by the Lessor prior to such modification, cancellation, or abrogation, including, but not limited to, bonuses, rentals and royalties.

NOTE: The State of Louisiana does hereby reserve, and this lease shall be subject to, the imprescriptible right of surface use in the nature of a servitude in favor of the Department of Natural Resources, including its Offices and Commissions, for the sole purpose of implementing,

constructing, servicing and maintaining approved coastal zone management and/or restoration projects. Utilization of any and all rights derived under this lease by the mineral lessee, its agents, successors or assigns, shall not interfere with nor hinder the reasonable surface use by the Department of Natural Resources, its Offices or Commissions, as herein above reserved.

NOTE: The Department of Wildlife and Fisheries has designated certain areas in the coastal waters of the State of Louisiana as Oyster Seed Bed Areas. The exact location of those Seed Bed Areas must be obtained from the Department of Wildlife and Fisheries and any work done under a mineral lease from the State of Louisiana may necessarily be conducted in conformity with the rules and regulations promulgated by the said Department of Wildlife and Fisheries for Oyster Seed Bed Areas.

Applicant: FLIGHT PETROLEUM

Bidder	Cash Payment	Price/Acre	Rental	Oil	Gas	Other



IBERIA PARISH

EUGENE ISLAND AREA, REVISED

P.O.B.
X=1,849,778.40
Y=265,465.00

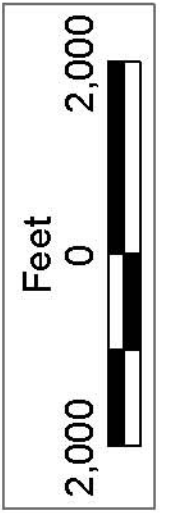
GEO 20031001

BLOCK E10010

BLOCK E10009

US

LA



TRACT 37507 - Portion of Block 12, Eugene Island Area, Revised, Iberia Parish, Louisiana

The beds and bottoms of all water bodies belonging to the State of Louisiana located in Block 12, Eugene Island Area, Revised, together with any present lands formed by accretion to the shoreline or islands formed therein, located in Iberia Parish, Louisiana, owned by and not presently under mineral lease as of July 13, 2005, from the State of Louisiana, the geographical area of which is more fully described as follows: Beginning at a point on the East line of Block 12, Eugene Island Area, Revised, having Coordinates of X = 1,895,101.00 and Y = 262,550.00: thence South 4,962.09 feet along the East line of said Block 12 to a point on the Three Mile Line derived from the June 16, 1975 United States vs. Louisiana No. 9 Original, having Coordinates of X = 1,895,101.00 and Y = 257,587.91; thence along said Three Mile Line the following courses: Northwesterly on an arc having a Radius of 18,240.60 feet and a center at X = 1,896,827 and Y = 275,747 to a point having Coordinates of X = 1,895,100 and Y = 257,588 and Southeasterly on an arc having a Radius of 18,240.60 feet and a center at X = 1,882,306 and Y = 270,590 to a point on the South line of said Block 12, having Coordinates of X = 1,892,395.65 and Y = 255,394.00; thence West 12,572.93 feet along the South Line of said Block 12 to its Southwest corner having Coordinates of X = 1,879,822.72 and Y = 255,394.00; thence North 7,156.00 feet along the West line of said Block 12 to a point having Coordinates of X = 1,879,822.72 and Y = 262,550.00; thence East 15,278.28 feet to the point of beginning, **LESS AND EXCEPT** all those portions of State Lease No. 340, as amended, that may lie within the above described tract, containing approximately **2,446.19 acres**, **LESS AND EXCEPT** that portion thereof, if any, lying seaward of the line three nautical miles from the coast line of Louisiana, as said three mile line has been decreed by the Supreme Court of the United States, as determined by a Special Master appointed therein, in litigation styled **United States v. State of Louisiana et al No. 9 Original**, in 1975, all as more particularly outlined on a plat in the Office of Mineral Resources, Department of Natural Resources. All bearings, distances and coordinates are based on the Louisiana Coordinate System of 1927, (South Zone).

NOTE: The above description of the Tract nominated for lease has been provided and corrected, where required, exclusively by the nomination party. Any mineral lease selected from this Tract and awarded by the Louisiana State Mineral Board shall be without warranty of any kind, either express, implied, or statutory, including, but not limited to, the implied warranties of merchantability and fitness for a particular purpose. Should the mineral lease awarded by the Louisiana State Mineral Board be subsequently modified, cancelled or abrogated due to the existence of conflicting leases, operating agreements, private claims or other future obligations or conditions which may affect all or any portion of the leased Tract, it shall not relieve the Lessee of the obligation to pay any bonus due thereon to the Louisiana State Mineral Board, nor shall the Louisiana State Mineral Board be obligated to refund any consideration

paid by the Lessor prior to such modification, cancellation, or abrogation, including, but not limited to, bonuses, rentals and royalties.

NOTE: The State of Louisiana does hereby reserve, and this lease shall be subject to, the imprescriptible right of surface use in the nature of a servitude in favor of the Department of Natural Resources, including its Offices and Commissions, for the sole purpose of implementing, constructing, servicing and maintaining approved coastal zone management and/or restoration projects. Utilization of any and all rights derived under this lease by the mineral lessee, its agents, successors or assigns, shall not interfere with nor hinder the reasonable surface use by the Department of Natural Resources, its Offices or Commissions, as herein above reserved.

NOTE: The Department of Wildlife and Fisheries has designated certain areas in the coastal waters of the State of Louisiana as Oyster Seed Bed Areas. The exact location of those Seed Bed Areas must be obtained from the Department of Wildlife and Fisheries and any work done under a mineral lease from the State of Louisiana may necessarily be conducted in conformity with the rules and regulations promulgated by the said Department of Wildlife and Fisheries for Oyster Seed Bed Areas.

Applicant: FLIGHT PETROLEUM

Bidder	Cash Payment	Price/Acre	Rental	Oil	Gas	Other

