

**TRACT 37488 - Portion of Blocks 3, and 4, West Cameron Area, Revised, Cameron Parish, Louisiana**

The beds and bottoms of all water bodies belonging to the State of Louisiana located in Blocks 3, and 4, West Cameron Area, Revised, together with any present lands formed by accretion to the shoreline or islands formed therein, located in Cameron Parish, Louisiana, owned by and not presently under mineral lease as of July 13, 2005, from the State of Louisiana, the geographical area of which is more fully described as follows: Beginning at a point within Block 3, West Cameron Area, Revised, having Coordinates of X = 1,393,830.00 and Y = 401,082.74; thence West 2,378.29 feet to a point on the common boundary line between said Block 3 and Block 4, West Cameron Area, Revised, having Coordinates of X = 1,391,451.71 and Y = 401,082.74; thence West 7,140.35 feet to a point on the East line of State Lease No. 17637 having Coordinates of X = 1,384,311.36 and Y = 401,082.74; thence North 40 degrees 53 minutes 03 seconds East 184.11 feet along the East line of said State Lease No. 17637 to its Northeast corner, said corner also being the Southeast corner of State Lease No. 17635, having Coordinates of X = 1,384,431.86 and Y = 401,221.93; thence along the boundary of said State Lease No. 17635 the following courses: North 40 degrees 53 minutes 03 seconds East 4,580.58 feet to its Northeast corner having Coordinates of X = 1,387,430.00 and Y = 404,685.00 and North 82 degrees 20 minutes 36 seconds West 10,225.75 feet to its Northwest corner, said corner also being a point on the West line of said Block 4, having Coordinates of X = 1,377,295.42 and Y = 406,047.46; thence North 2,030.57 feet along the West line of said Block 4 to its Northwest corner, said corner also being a point on the Coastline as per the Supreme Court Decree dated June 16, 1975, having Coordinates of X = 1,377,295.42 and Y = 408,078.03; thence along said Coastline the following courses: Northeasterly on a straight line to a point having Coordinates of X = 1,380,235 and Y = 408,500, Northeasterly on a straight line to a point having Coordinates of X = 1,383,990 and Y = 409,136, Northeasterly on a straight line to a point having Coordinates of X = 1,386,636 and Y = 409,216, Northeasterly on a straight line to the Northeast corner of said Block 4, said corner also being the Northwest corner of said Block 3, having Coordinates of X = 1,391,451.71 and Y = 409,240.45, Northeasterly on a straight line to a point having Coordinates of X = 1,391,954 and Y = 409,243, Southeasterly on a straight line to a point having Coordinates of X = 1,392,000 and Y = 409,180, and Southeasterly on a straight line to a point having Coordinates of X = 1,393,830.00 and Y = 409,071.32; thence South 7,988.58 feet to the point of beginning, containing **2,118.15 acres**, all as more particularly outlined on a plat on file in the Office of Mineral Resources, Department of Natural Resources. All bearings, distances and coordinates are based on Louisiana Coordinate System of 1927, (North or South Zone).

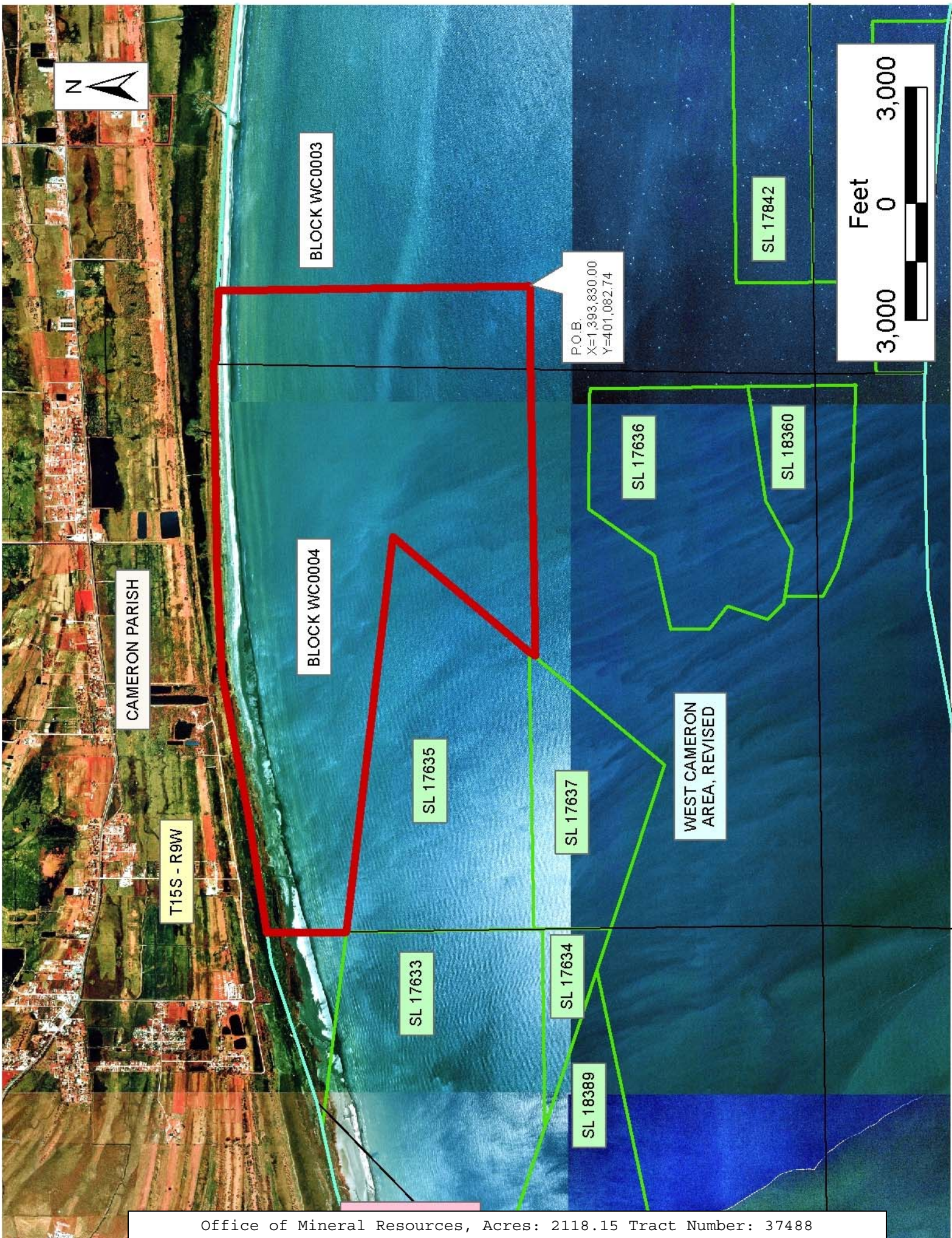
NOTE: The above description of the Tract nominated for lease has been provided and corrected, where required, exclusively by the nomination party. Any mineral lease selected from this Tract and awarded by the Louisiana State Mineral Board shall be without warranty of any kind,

either express, implied, or statutory, including, but not limited to, the implied warranties of merchantability and fitness for a particular purpose. Should the mineral lease awarded by the Louisiana State Mineral Board be subsequently modified, cancelled or abrogated due to the existence of conflicting leases, operating agreements, private claims or other future obligations or conditions which may affect all or any portion of the leased Tract, it shall not relieve the Lessee of the obligation to pay any bonus due thereon to the Louisiana State Mineral Board, nor shall the Louisiana State Mineral Board be obligated to refund any consideration paid by the Lessor prior to such modification, cancellation, or abrogation, including, but not limited to, bonuses, rentals and royalties.

NOTE: The State of Louisiana does hereby reserve, and this lease shall be subject to, the imprescriptible right of surface use in the nature of a servitude in favor of the Department of Natural Resources, including its Offices and Commissions, for the sole purpose of implementing, constructing, servicing and maintaining approved coastal zone management and/or restoration projects. Utilization of any and all rights derived under this lease by the mineral lessee, its agents, successors or assigns, shall not interfere with nor hinder the reasonable surface use by the Department of Natural Resources, its Offices or Commissions, as herein above reserved.

Applicant: C.J. HALEY

Bidder	Cash Payment	Price/Acre	Rental	Oil	Gas	Other



**TRACT 37489 - Portion of Blocks 2, and 3, West Cameron Area, Revised, Cameron Parish, Louisiana**

The beds and bottoms of all water bodies belonging to the State of Louisiana located in Blocks 2, and 3, West Cameron Area, Revised, together with any present lands formed by accretion to the shoreline or islands formed therein, located in Cameron Parish, Louisiana, owned by and not presently under mineral lease as of July 13, 2005, from the State of Louisiana, the geographical area of which is more fully described as follows: Beginning at a point within Block 3, West Cameron Area, Revised, having Coordinates of X = 1,393,830.00 and Y = 401,082.74; thence North 7,988.58 feet to a point on the North line of said Block 3, said point also being on the Coastline as per the Supreme Court Decree dated June 16, 1975, having Coordinates of X = 1,393,830.00 and Y = 409,071.32; thence along said Coastline the following courses: Southeasterly on a straight line to a point having Coordinates of X = 1,397,220 and Y = 408,870, Southeasterly on a straight line to a point having Coordinates of X = 1,402,525 and Y = 408,365, and Southeasterly on a straight line to the most Northerly Northwest corner of State Lease No. 18519 having Coordinates of X = 1,404,483.31 and Y = 408,038.61; thence along the boundary of said State Lease No. 18519 the following courses: South 52 degrees 05 minutes 56 seconds West 1,983.74 feet to a point having Coordinates of X = 1,402,918.00 and Y = 406,820.00, South 37 degrees 48 minutes 27 seconds East 1,784.64 feet to a point having Coordinates of X = 1,404,012.00 and Y = 405,410.00, and North 51 degrees 24 minutes 55 seconds East 2,295.30 feet to its most Easterly Southeast corner, said corner also being the South corner of State Lease No. 18520, having Coordinates of X = 1,405,806.20 and Y = 406,841.51; thence North 51 degrees 24 minutes 55 seconds East 1,295.33 feet along the boundary of said State Lease No. 18520 to its Northeast corner, said corner also being a point on said Coastline and located within Block 2 having Coordinates of X = 1,406,818.74 and Y = 407,649.37; thence along said Coastline the following courses: Southeasterly on a straight line to a point having Coordinates of X = 1,410,175 and Y = 407,090 and Southeasterly on a straight line to a point on the boundary of State Lease No. 18423 having Coordinates of X = 1,411,288.31 and Y = 406,840.00; thence along the boundary of said State Lease No. 18423 the following courses: West 2,720.31 feet to a point having Coordinates of X = 1,408,568.00 and Y = 406,840.00, South 1,130.00 feet to a point having Coordinates of X = 1,408,568.00 and Y = 405,710.00, West 2,288.00 feet to a point having Coordinates of X = 1,406,280.00 and Y = 405,710.00, and South 3,010.00 feet to its Southwest corner, said corner also being the most Westerly Northwest corner of State Lease No. 18521, having Coordinates of X = 1,406,280.00 and Y = 402,700.00; thence South 1,617.26 feet along the West line of said State Lease No. 18521 to its Southwest corner, said corner also being a point on the North line of State Lease No. 18425, having Coordinates of X = 1,406,280.00 and Y = 401,082.74; thence West 473.80 feet along the North line of said State Lease No. 18425 to its Northwest corner, said corner also being the Northeast corner of State Lease No. 18424, having Coordinates of X = 1,405,806.20 and Y = 401,082.74; thence

West 598.40 feet along the North line of said State Lease No. 18424 to its most Northerly Northwest corner having Coordinates of X = 1,405,207.80 and Y = 401,082.74; thence West 11,377.80 feet to the point of beginning, **LESS AND EXCEPT** all that portion of State Lease No. 18523 that may lie within the above described tract, containing **2,132.99 acres**, all as more particularly outlined on a plat on file in the Office of Mineral Resources, Department of Natural Resources. All bearings, distances and coordinates are based on Louisiana Coordinate System of 1927, (North or South Zone).

NOTE: The above description of the Tract nominated for lease has been provided and corrected, where required, exclusively by the nomination party. Any mineral lease selected from this Tract and awarded by the Louisiana State Mineral Board shall be without warranty of any kind, either express, implied, or statutory, including, but not limited to, the implied warranties of merchantability and fitness for a particular purpose. Should the mineral lease awarded by the Louisiana State Mineral Board be subsequently modified, cancelled or abrogated due to the existence of conflicting leases, operating agreements, private claims or other future obligations or conditions which may affect all or any portion of the leased Tract, it shall not relieve the Lessee of the obligation to pay any bonus due thereon to the Louisiana State Mineral Board, nor shall the Louisiana State Mineral Board be obligated to refund any consideration paid by the Lessor prior to such modification, cancellation, or abrogation, including, but not limited to, bonuses, rentals and royalties.

NOTE: The State of Louisiana does hereby reserve, and this lease shall be subject to, the imprescriptible right of surface use in the nature of a servitude in favor of the Department of Natural Resources, including its Offices and Commissions, for the sole purpose of implementing, constructing, servicing and maintaining approved coastal zone management and/or restoration projects. Utilization of any and all rights derived under this lease by the mineral lessee, its agents, successors or assigns, shall not interfere with nor hinder the reasonable surface use by the Department of Natural Resources, its Offices or Commissions, as herein above reserved.

Bidder	Cash Payment	Price/Acre	Rental	Oil	Gas	Other

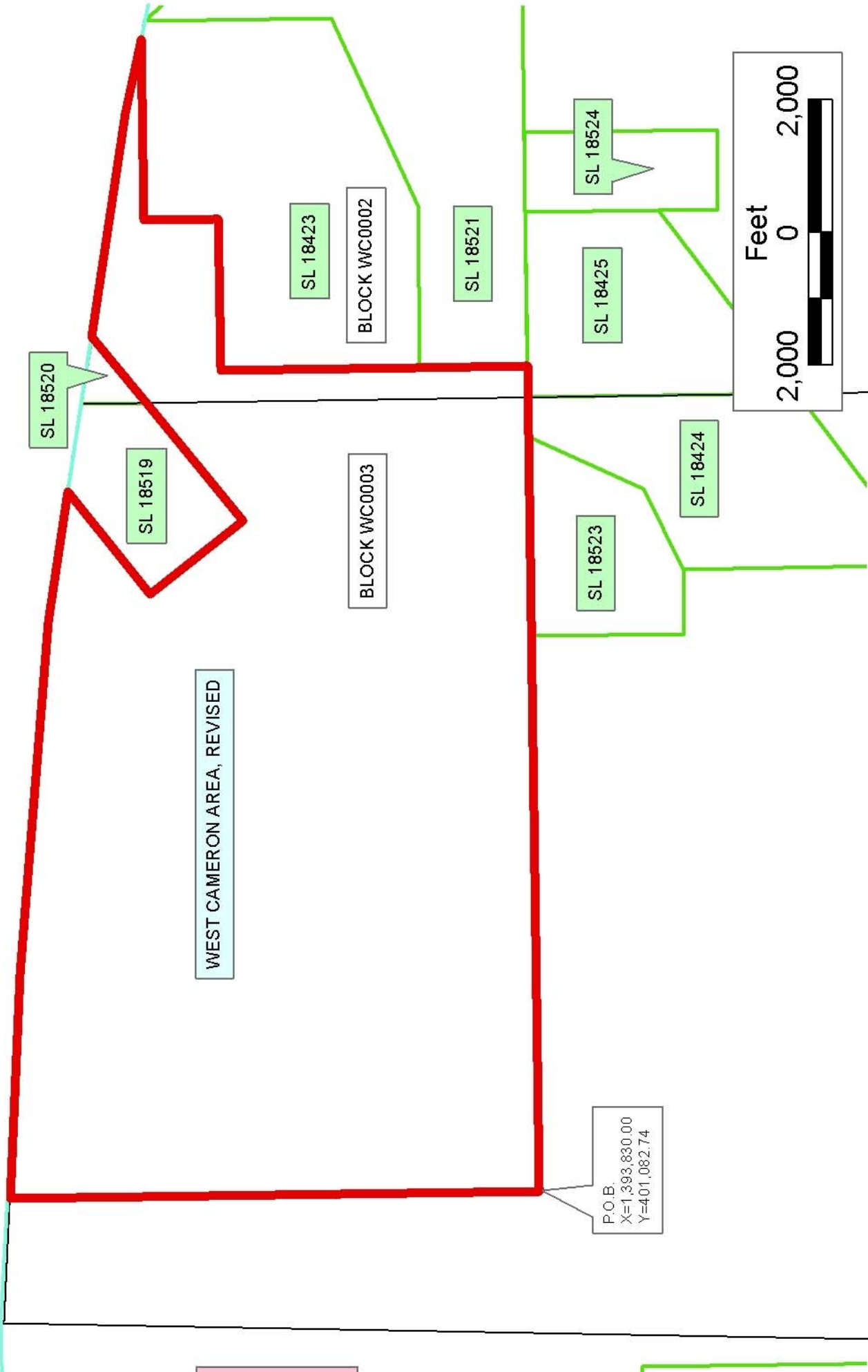
Applicant: C.J. HALEY



T15S - R9W

CAMERON PARISH

T15S - R8W



**TRACT 37490 - Portion of Block 2, West Cameron Area, Revised, Cameron Parish, Louisiana**

The beds and bottoms of all water bodies belonging to the State of Louisiana located in Block 2, West Cameron Area, Revised, together with any present lands formed by accretion to the shoreline or islands formed therein, located in Cameron Parish, Louisiana, owned by and not presently under mineral lease as of July 13, 2005, from the State of Louisiana, the geographical area of which is more fully described as follows: Beginning at a point within Block 2, West Cameron Area, Revised, having Coordinates of X = 1,415,806.20 and Y = 398,175.00; thence West 6,006.20 feet to the Southeast corner of State Lease No. 18524 having Coordinates of X = 1,409,800.00 and Y = 398,175.00; thence North 2,907.74 feet along the East line of said State Lease No. 18524 to its Northeast corner, said corner also being a point on the South line of State Lease No. 18521, having Coordinates of X = 1,409,800.00 and Y = 401,082.74; thence along the boundary of said State Lease No. 18521 the following courses: East 2,028.00 feet to a point having Coordinates of X = 1,411,828.00 and Y = 401,082.74, North 53 degrees 05 minutes 21 seconds East 2,536.36 feet to a point having Coordinates of X = 1,413,856.00 and Y = 402,606.00, North 1,576.00 feet to a point having Coordinates of X = 1,413,856.00 and Y = 404,182.00, and North 41 degrees 25 minutes 49 seconds West 3,462.25 feet to a point on the Coastline as per the Supreme Court Decree dated June 16, 1975, having Coordinates of X = 1,411,565.00 and Y = 406,777.87; thence Southeasterly on a straight line along said Coastline to a point having Coordinates of X = 1,415,806.20 and Y = 405,825.48; thence South 7,650.48 feet to the point of beginning, containing **713.26 acres**, all as more particularly outlined on a plat on file in the Office of Mineral Resources, Department of Natural Resources. All bearings, distances and coordinates are based on Louisiana Coordinate System of 1927, (North or South Zone).

NOTE: The above description of the Tract nominated for lease has been provided and corrected, where required, exclusively by the nomination party. Any mineral lease selected from this Tract and awarded by the Louisiana State Mineral Board shall be without warranty of any kind, either express, implied, or statutory, including, but not limited to, the implied warranties of merchantability and fitness for a particular purpose. Should the mineral lease awarded by the Louisiana State Mineral Board be subsequently modified, cancelled or abrogated due to the existence of conflicting leases, operating agreements, private claims or other future obligations or conditions which may affect all or any portion of the leased Tract, it shall not relieve the Lessee of the obligation to pay any bonus due thereon to the Louisiana State Mineral Board, nor shall the Louisiana State Mineral Board be obligated to refund any consideration paid by the Lessor prior to such modification, cancellation, or abrogation, including, but not limited to, bonuses, rentals and royalties.

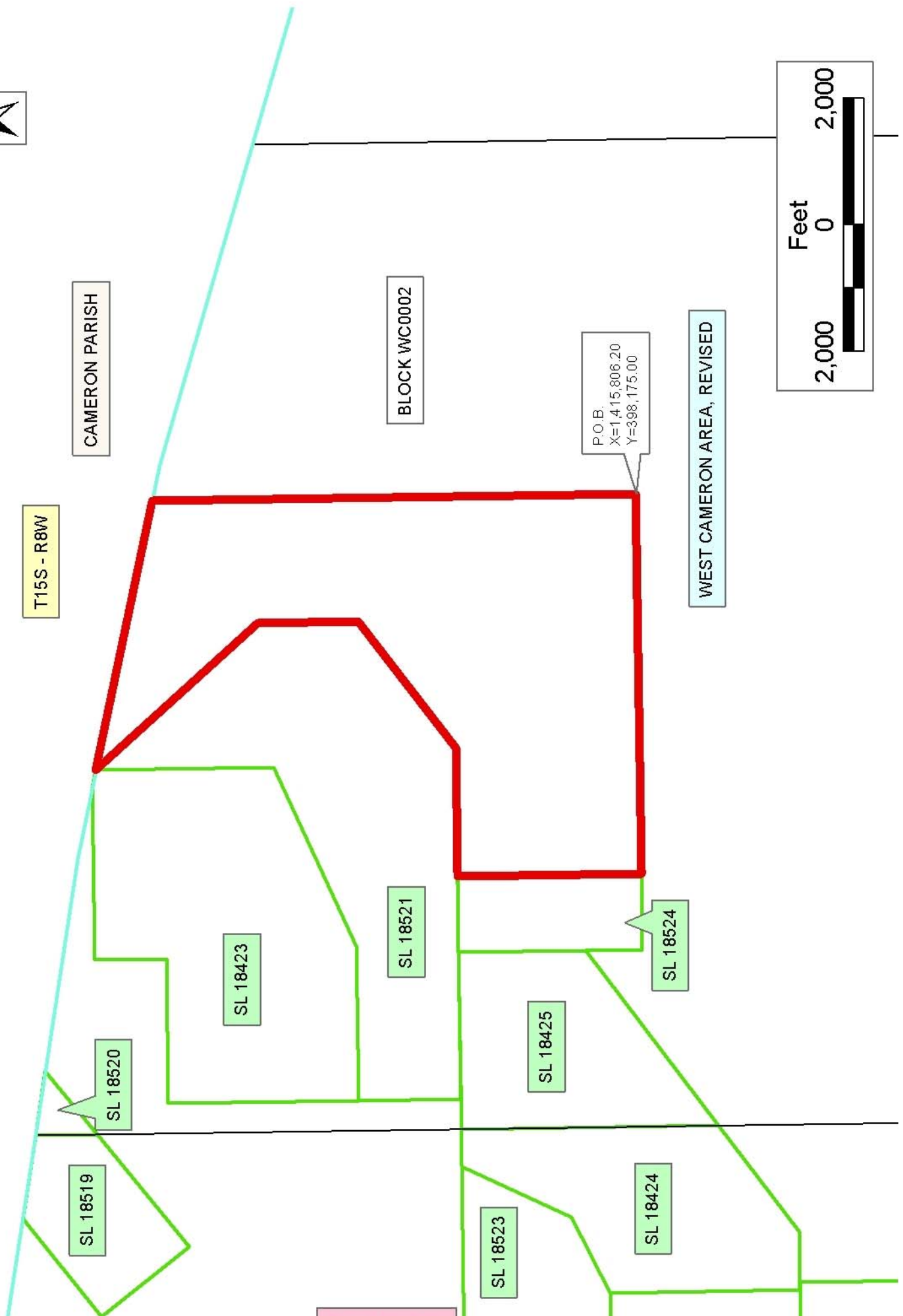
NOTE: The State of Louisiana does hereby reserve, and this lease shall be subject to, the imprescriptible right of surface use in the nature of a



servitude in favor of the Department of Natural Resources, including its Offices and Commissions, for the sole purpose of implementing, constructing, servicing and maintaining approved coastal zone management and/or restoration projects. Utilization of any and all rights derived under this lease by the mineral lessee, its agents, successors or assigns, shall not interfere with nor hinder the reasonable surface use by the Department of Natural Resources, its Offices or Commissions, as herein above reserved.

Applicant: C.J. HALEY

Bidder	Cash Payment	Price/Acre	Rental	Oil	Gas	Other



**TRACT 37491 - Portion of Block 16, West Cameron Area, Revised, Cameron Parish, Louisiana**

The beds and bottoms of all water bodies belonging to the State of Louisiana located in Block 16, West Cameron Area, Revised, together with any present lands formed by accretion to the shoreline or islands formed therein, located in Cameron Parish, Louisiana, owned by and not presently under mineral lease as of July 13, 2005, from the State of Louisiana, the geographical area of which is more fully described as follows: Beginning at a point within Block 16, West Cameron Area, Revised, having Coordinates of X = 1,218,044.65 and Y = 386,411.22; thence North 3,293.93 feet to a point on the 1975 Decree Shoreline, also being a point on the Southern boundary of State Lease No. 18217 having Coordinates of X = 1,218,044.65 and Y = 389,705.15; thence along the said 1975 Decree Shoreline the following courses: Northeasterly on a straight line to a point having Coordinates of X = 1,219,065 and Y = 390,227, Northeasterly on a straight line to a point having Coordinates of X = 1,219,698 and Y = 390,746 and Northeasterly on a straight line to the Northwest corner of State Lease No. 18025 having Coordinates of X = 1,221,734.16 and Y = 391,679.58; thence South 5,268.36 feet along the West boundary of said State Lease No. 18025 to a point having Coordinates of X = 1,221,734.16 and Y = 386,411.22; thence West 3,689.51 feet to the point of beginning, containing approximately **366.93 acres**, all as more particularly outlined on a plat on file in the Office of Mineral Resources, Department of Natural Resources. All bearings, distances and coordinates are based on Louisiana Coordinate System of 1927, (North or South Zone).

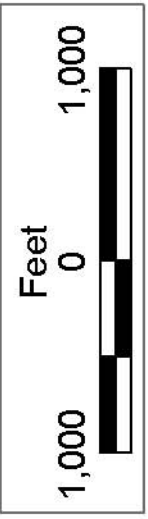
NOTE: The above description of the Tract nominated for lease has been provided and corrected, where required, exclusively by the nomination party. Any mineral lease selected from this Tract and awarded by the Louisiana State Mineral Board shall be without warranty of any kind, either express, implied, or statutory, including, but not limited to, the implied warranties of merchantability and fitness for a particular purpose. Should the mineral lease awarded by the Louisiana State Mineral Board be subsequently modified, cancelled or abrogated due to the existence of conflicting leases, operating agreements, private claims or other future obligations or conditions which may affect all or any portion of the leased Tract, it shall not relieve the Lessee of the obligation to pay any bonus due thereon to the Louisiana State Mineral Board, nor shall the Louisiana State Mineral Board be obligated to refund any consideration paid by the Lessor prior to such modification, cancellation, or abrogation, including, but not limited to, bonuses, rentals and royalties.

NOTE: The State of Louisiana does hereby reserve, and this lease shall be subject to, the imprescriptible right of surface use in the nature of a servitude in favor of the Department of Natural Resources, including its Offices and Commissions, for the sole purpose of implementing, constructing, servicing and maintaining approved coastal zone management and/or restoration projects. Utilization of any and all rights derived under this lease by the mineral lessee, its agents, successors or assigns,

shall not interfere with nor hinder the reasonable surface use by the Department of Natural Resources, its Offices or Commissions, as herein above reserved.

Applicant: GULF COAST ENERGY CORPORATION

Bidder	Cash Payment	Price/Acre	Rental	Oil	Gas	Other



**TRACT 37492 - Portion of Block 16, West Cameron Area, Revised, Cameron Parish, Louisiana**

The beds and bottoms of all water bodies belonging to the State of Louisiana located in Block 16, West Cameron Area, Revised, together with any present lands formed by accretion to the shoreline or islands formed therein, located in Cameron Parish, Louisiana, owned by and not presently under mineral lease as of July 13, 2005, from the State of Louisiana, the geographical area of which is more fully described as follows: Beginning at a point on the West line of Block 16, West Cameron Area, Revised, having Coordinates of X = 1,214,355.14 and Y = 386,411.22; thence North 1,186.07 feet along the West line of said Block 16 to a point on the 1975 Decree Shoreline, also being a point on the Southern boundary of State Lease No. 18217 having Coordinates of X = 1,214,355.14 and Y = 387,597.29; thence along the said 1975 Decree Shoreline the following courses: Northeasterly on a straight line to a point having Coordinates of X = 1,215,615.00 and Y = 388,263.00, Northeasterly on a straight line to a point having Coordinates of X = 1,216,582.00 and Y = 389,216.00, Northeasterly on a straight line to a point having Coordinates of X = 1,217,089.00 and Y = 389,513.00, Southeasterly on a straight line to a point having Coordinates of X = 1,217,536.00 and Y = 389,445.00 and Northeasterly on a straight line to a point having Coordinates of X = 1,218,044.65 and Y = 389,705.15; thence South 3,293.93 feet to a point having Coordinates of X = 1,218,044.65 and Y = 386,411.22; thence West 3,689.51 feet to the point of beginning, containing approximately **198.42 acres**, all as more particularly outlined on a plat on file in the Office of Mineral Resources, Department of Natural Resources. All bearings, distances and coordinates are based on Louisiana Coordinate System of 1927, (North or South Zone).

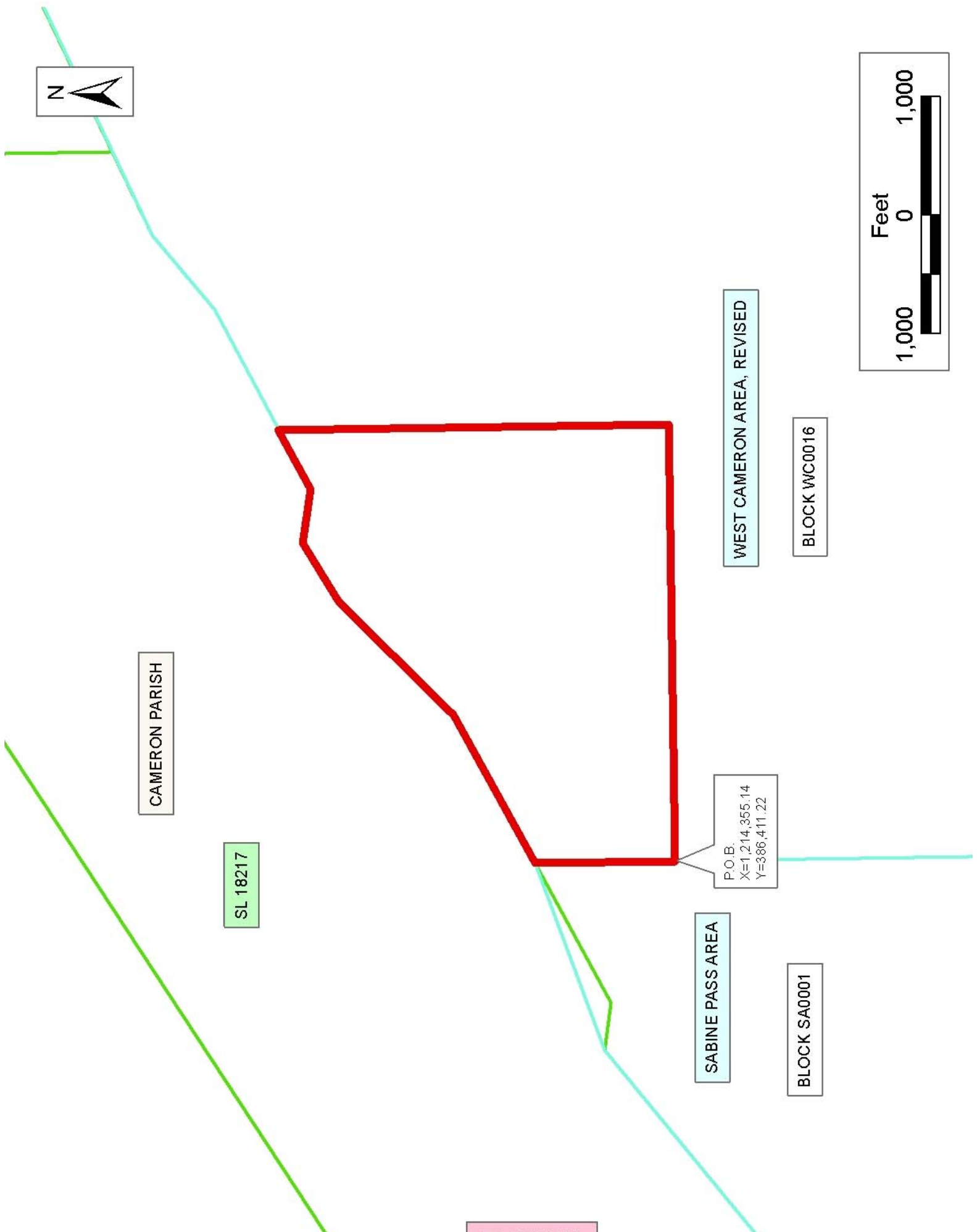
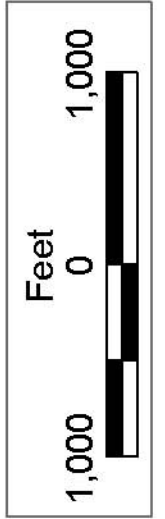
NOTE: The above description of the Tract nominated for lease has been provided and corrected, where required, exclusively by the nomination party. Any mineral lease selected from this Tract and awarded by the Louisiana State Mineral Board shall be without warranty of any kind, either express, implied, or statutory, including, but not limited to, the implied warranties of merchantability and fitness for a particular purpose. Should the mineral lease awarded by the Louisiana State Mineral Board be subsequently modified, cancelled or abrogated due to the existence of conflicting leases, operating agreements, private claims or other future obligations or conditions which may affect all or any portion of the leased Tract, it shall not relieve the Lessee of the obligation to pay any bonus due thereon to the Louisiana State Mineral Board, nor shall the Louisiana State Mineral Board be obligated to refund any consideration paid by the Lessor prior to such modification, cancellation, or abrogation, including, but not limited to, bonuses, rentals and royalties.

NOTE: The State of Louisiana does hereby reserve, and this lease shall be subject to, the imprescriptible right of surface use in the nature of a servitude in favor of the Department of Natural Resources, including its Offices and Commissions, for the sole purpose of implementing,

constructing, servicing and maintaining approved coastal zone management and/or restoration projects. Utilization of any and all rights derived under this lease by the mineral lessee, its agents, successors or assigns, shall not interfere with nor hinder the reasonable surface use by the Department of Natural Resources, its Offices or Commissions, as herein above reserved.

Applicant: GULF COAST ENERGY CORPORATION

Bidder	Cash Payment	Price/Acre	Rental	Oil	Gas	Other



CAMERON PARISH

SL 18217

WEST CAMERON AREA, REVISED

BLOCK WC0016

SABINE PASS AREA

BLOCK SA0001

P.O.B.  
X=1,214,355.14  
Y=386,411.22



**TRACT 37493 - Portion of Block 1, Sabine Pass Area, Cameron Parish, Louisiana**

The beds and bottoms of all water bodies belonging to the State of Louisiana located in Block 1, Sabine Pass Area, together with any present lands formed by accretion to the shoreline or islands formed therein, located in Cameron Parish, Louisiana, owned by and not presently under mineral lease as of July 13, 2005, from the State of Louisiana, the geographical area of which is more fully described as follows: Beginning at a point on the East boundary of said Block 1, Sabine Pass Area, having Coordinates of X = 1,214,355.14 and Y = 386,411.22; thence West 2,358.23 feet to a point on the 1975 Decree Shoreline, also being a point on the Southern boundary of State Lease No. 18217 having Coordinates of X = 1,211,996.91 and Y = 386,411.22; thence along the said 1975 Decree Shoreline the following courses: Northeasterly on a straight line to a point having Coordinates of X = 1,212,770 and Y = 387,027; Southeasterly on a straight line to a point having Coordinates of X = 1,213,168 and Y = 386,970; Northeasterly on a straight line to the Northeast corner of said Block 1, having Coordinates of X = 1,214,355.14 and Y = 387,597.29; thence South 1,186.07 feet along the East boundary of said Block 1 to the point of beginning, containing approximately **34.61 acres**, all as more particularly outlined on a plat on file in the Office of Mineral Resources, Department of Natural Resources. All bearings, distances and coordinates are based on Louisiana Coordinate System of 1927, (North or South Zone).

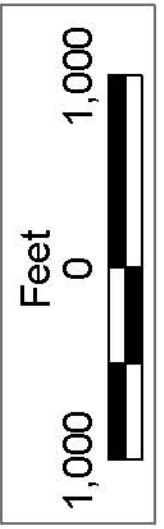
NOTE: The above description of the Tract nominated for lease has been provided and corrected, where required, exclusively by the nomination party. Any mineral lease selected from this Tract and awarded by the Louisiana State Mineral Board shall be without warranty of any kind, either express, implied, or statutory, including, but not limited to, the implied warranties of merchantability and fitness for a particular purpose. Should the mineral lease awarded by the Louisiana State Mineral Board be subsequently modified, cancelled or abrogated due to the existence of conflicting leases, operating agreements, private claims or other future obligations or conditions which may affect all or any portion of the leased Tract, it shall not relieve the Lessee of the obligation to pay any bonus due thereon to the Louisiana State Mineral Board, nor shall the Louisiana State Mineral Board be obligated to refund any consideration paid by the Lessor prior to such modification, cancellation, or abrogation, including, but not limited to, bonuses, rentals and royalties.

NOTE: The State of Louisiana does hereby reserve, and this lease shall be subject to, the imprescriptible right of surface use in the nature of a servitude in favor of the Department of Natural Resources, including its Offices and Commissions, for the sole purpose of implementing, constructing, servicing and maintaining approved coastal zone management and/or restoration projects. Utilization of any and all rights derived under this lease by the mineral lessee, its agents, successors or assigns, shall not interfere with nor hinder the reasonable surface use by the

Department of Natural Resources, its Offices or Commissions, as herein above reserved.

Applicant: GULF COAST ENERGY CORPORATION

Bidder	Cash Payment	Price/Acre	Rental	Oil	Gas	Other



SL 18217

WEST CAMERON  
AREA, REVISED

BLOCK WC0016

P.O.B.  
X=1,214,355.14  
Y=386,411.22

CAMERON PARISH

BLOCK SA0001

SABINE PASS AREA

**TRACT 37494 - Portion of Block 16, West Cameron Area, Revised, Cameron Parish, Louisiana**

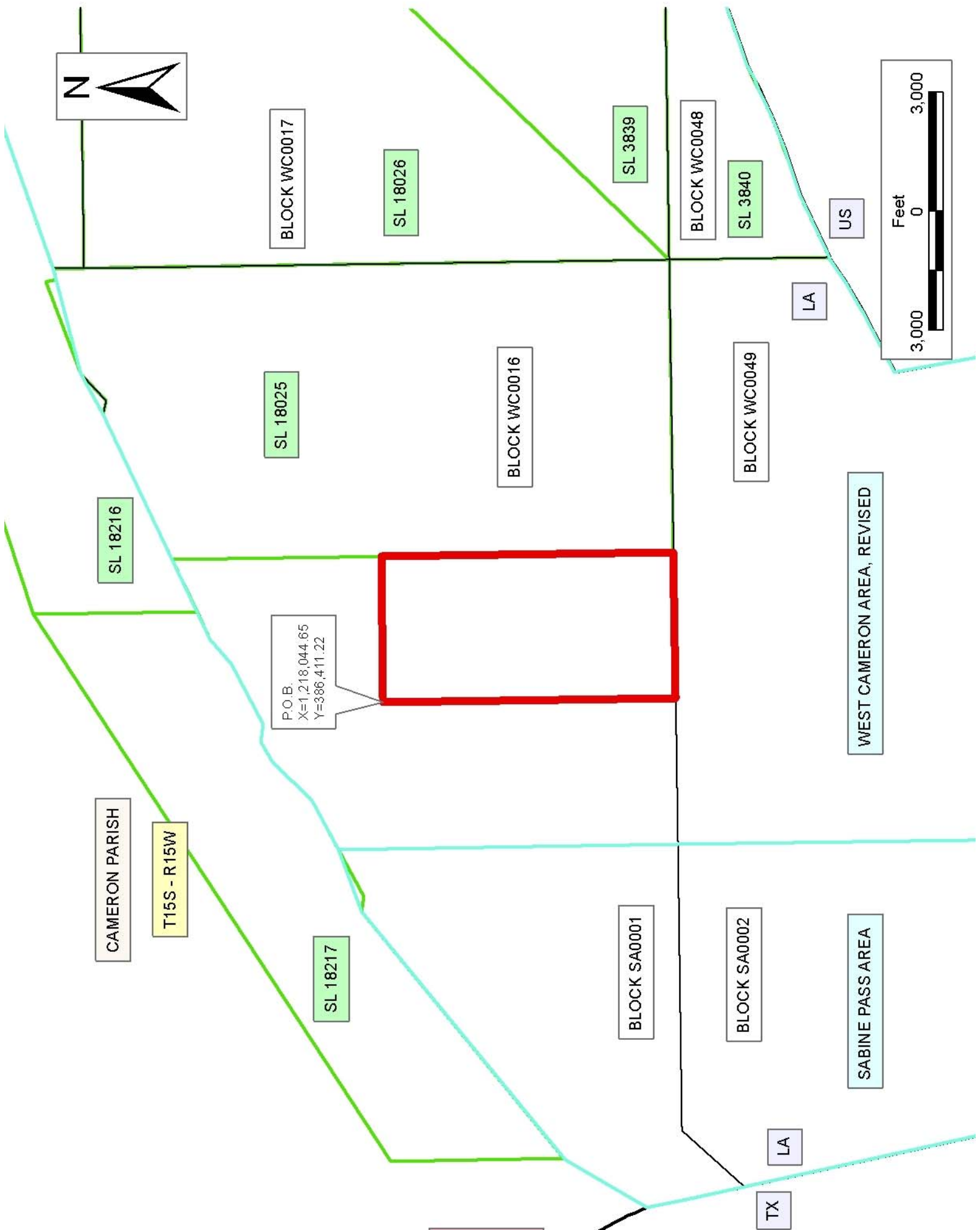
The beds and bottoms of all water bodies belonging to the State of Louisiana located in Block 16, West Cameron Area, Revised, together with any present lands formed by accretion to the shoreline or islands formed therein, located in Cameron Parish, Louisiana, owned by and not presently under mineral lease as of July 13, 2005, from the State of Louisiana, the geographical area of which is more fully described as follows: Beginning at a point within Block 16, West Cameron Area, Revised, having Coordinates of X = 1,218,044.65 and Y = 386,411.22; thence East 3,689.51 feet to a point on the West boundary of State Lease No. 18025 having Coordinates of X = 1,221,734.16 and Y = 386,411.22; thence South 7,379.03 feet along the West boundary of said State Lease No. 18025 to its Southwest corner located on the South boundary of said Block 16 having Coordinates of X = 1,221,734.16 and Y = 379,032.19; thence West 3,689.51 feet along the South boundary of said Block 16 to a point having Coordinates of X = 1,218,044.65 and Y = 379,032.19; thence North 7,379.03 feet to the point of beginning, containing approximately **625.00 acres**, all as more particularly outlined on a plat on file in the Office of Mineral Resources, Department of Natural Resources. All bearings, distances and coordinates are based on Louisiana Coordinate System of 1927, (North or South Zone).

NOTE: The above description of the Tract nominated for lease has been provided and corrected, where required, exclusively by the nomination party. Any mineral lease selected from this Tract and awarded by the Louisiana State Mineral Board shall be without warranty of any kind, either express, implied, or statutory, including, but not limited to, the implied warranties of merchantability and fitness for a particular purpose. Should the mineral lease awarded by the Louisiana State Mineral Board be subsequently modified, cancelled or abrogated due to the existence of conflicting leases, operating agreements, private claims or other future obligations or conditions which may affect all or any portion of the leased Tract, it shall not relieve the Lessee of the obligation to pay any bonus due thereon to the Louisiana State Mineral Board, nor shall the Louisiana State Mineral Board be obligated to refund any consideration paid by the Lessor prior to such modification, cancellation, or abrogation, including, but not limited to, bonuses, rentals and royalties.

NOTE: The State of Louisiana does hereby reserve, and this lease shall be subject to, the imprescriptible right of surface use in the nature of a servitude in favor of the Department of Natural Resources, including its Offices and Commissions, for the sole purpose of implementing, constructing, servicing and maintaining approved coastal zone management and/or restoration projects. Utilization of any and all rights derived under this lease by the mineral lessee, its agents, successors or assigns, shall not interfere with nor hinder the reasonable surface use by the Department of Natural Resources, its Offices or Commissions, as herein above reserved.

Applicant: GULF COAST ENERGY CORPORATION

Bidder	Cash Payment	Price/Acre	Rental	Oil	Gas	Other



BLOCK WC0017

SL 18026

SL 3839

BLOCK WC0048

SL 3840

US



LA

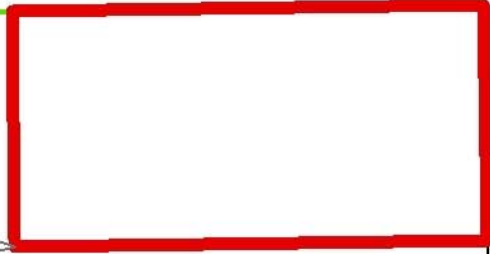
SL 18025

BLOCK WC0016

BLOCK WC0049

SL 18216

P.O.B.  
X=1,218,044.65  
Y=386,411.22



WEST CAMERON AREA, REVISED

CAMERON PARISH

T15S - R15W

SL 18217

BLOCK SA0001

BLOCK SA0002

SABINE PASS AREA

LA

TX

**TRACT 37495 - Portion of Block 1, Sabine Pass Area, Cameron Parish, Louisiana**

The beds and bottoms of all water bodies belonging to the State of Louisiana located in Block 1, Sabine Pass Area, together with any present lands formed by accretion to the shoreline or islands formed therein, located in Cameron Parish, Louisiana, owned by and not presently under mineral lease as of July 13, 2005, from the State of Louisiana, the geographical area of which is more fully described as follows: Beginning at a point on the East boundary of Block 1, Sabine Pass Area, having Coordinates of X = 1,214,355.14 and Y = 386,411.22; thence South 7,379.03 feet along the East boundary of said Block 1 to its Southeast corner having Coordinates of X = 1,214,355.14 and Y = 379,032.19; thence West 4,484.65 feet along the South boundary of said Block 1 to a point having Coordinates of X = 1,209,870.49 and Y = 379,032.19; thence North 5,685.28 feet to a point on the 1975 Decree Shoreline, also being a point on the Southern boundary of State Lease No. 18217 having Coordinates of X = 1,209,870.49 and Y = 384,717.47; thence Northeasterly on a straight line along the said 1975 Decree Shoreline to a point having Coordinates of X = 1,211,996.91 and Y = 386,411.22; thence East 2,358.23 feet to the point of beginning, containing approximately **718.36 acres**, all as more particularly outlined on a plat on file in the Office of Mineral Resources, Department of Natural Resources. All bearings, distances and coordinates are based on Louisiana Coordinate System of 1927, (North or South Zone).

NOTE: The above description of the Tract nominated for lease has been provided and corrected, where required, exclusively by the nomination party. Any mineral lease selected from this Tract and awarded by the Louisiana State Mineral Board shall be without warranty of any kind, either express, implied, or statutory, including, but not limited to, the implied warranties of merchantability and fitness for a particular purpose. Should the mineral lease awarded by the Louisiana State Mineral Board be subsequently modified, cancelled or abrogated due to the existence of conflicting leases, operating agreements, private claims or other future obligations or conditions which may affect all or any portion of the leased Tract, it shall not relieve the Lessee of the obligation to pay any bonus due thereon to the Louisiana State Mineral Board, nor shall the Louisiana State Mineral Board be obligated to refund any consideration paid by the Lessor prior to such modification, cancellation, or abrogation, including, but not limited to, bonuses, rentals and royalties.

NOTE: The State of Louisiana does hereby reserve, and this lease shall be subject to, the imprescriptible right of surface use in the nature of a servitude in favor of the Department of Natural Resources, including its Offices and Commissions, for the sole purpose of implementing, constructing, servicing and maintaining approved coastal zone management and/or restoration projects. Utilization of any and all rights derived under this lease by the mineral lessee, its agents, successors or assigns, shall not interfere with nor hinder the reasonable surface use by the

Department of Natural Resources, its Offices or Commissions, as herein above reserved.

Applicant: GULF COAST ENERGY CORPORATION

Bidder	Cash Payment	Price/Acre	Rental	Oil	Gas	Other





SL 18025

CAMERON PARISH

WEST CAMERON  
AREA, REVISED

BLOCK WC0016

P.O.B.  
X=1,214,355.14  
Y=386,411.22

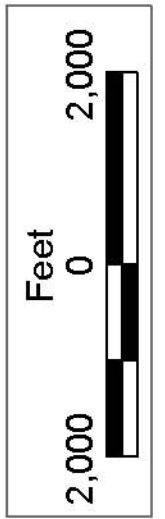
BLOCK SA0001

SABINE PASS AREA

SL 18217

LA

TX



**TRACT 37496 - Portion of Block 16, West Cameron Area, Revised, Cameron Parish, Louisiana**

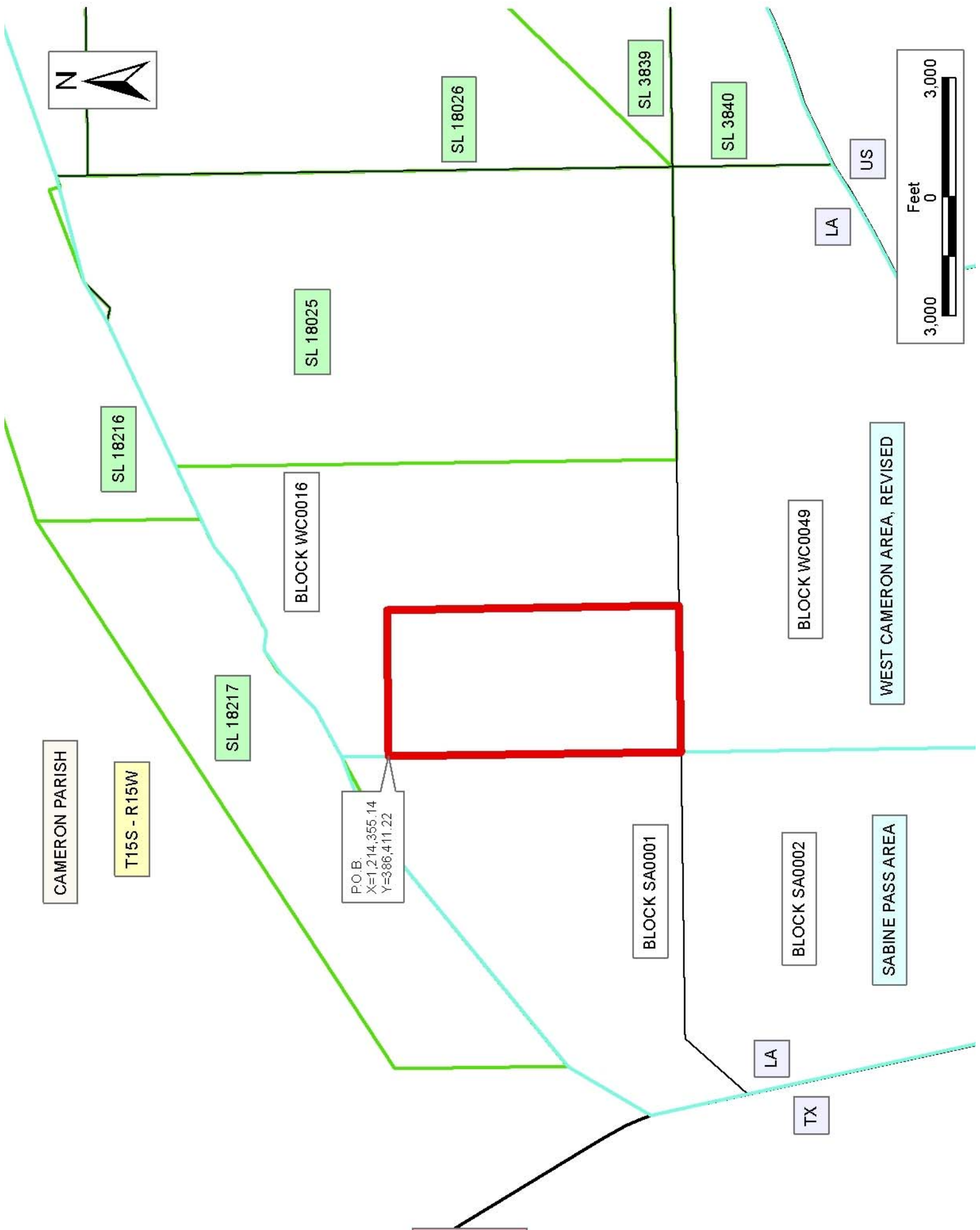
The beds and bottoms of all water bodies belonging to the State of Louisiana located in Block 16, West Cameron Area, Revised, together with any present lands formed by accretion to the shoreline or islands formed therein, located in Cameron Parish, Louisiana, owned by and not presently under mineral lease as of July 13, 2005, from the State of Louisiana, the geographical area of which is more fully described as follows: Beginning at a point on the West boundary of Block 16, West Cameron Area, Revised, having Coordinates of X = 1,214,355.14 and Y = 386,411.22; thence East 3,689.51 feet to a point having Coordinates of X = 1,218,044.65 and Y = 386,411.22; thence South 7,379.03 feet to a point on the South boundary of said Block 16 having Coordinates of X = 1,218,044.65 and Y = 379,032.19; thence West 3,689.51 feet along the South boundary of said Block 16 to its Southwest corner having Coordinates of X = 1,214,355.14 and Y = 379,032.19; thence North 7,379.03 feet along the West boundary of said Block 16 to the point of beginning, containing approximately **625.00 acres**, all as more particularly outlined on a plat on file in the Office of Mineral Resources, Department of Natural Resources. All bearings, distances and coordinates are based on Louisiana Coordinate System of 1927, (North or South Zone).

NOTE: The above description of the Tract nominated for lease has been provided and corrected, where required, exclusively by the nomination party. Any mineral lease selected from this Tract and awarded by the Louisiana State Mineral Board shall be without warranty of any kind, either express, implied, or statutory, including, but not limited to, the implied warranties of merchantability and fitness for a particular purpose. Should the mineral lease awarded by the Louisiana State Mineral Board be subsequently modified, cancelled or abrogated due to the existence of conflicting leases, operating agreements, private claims or other future obligations or conditions which may affect all or any portion of the leased Tract, it shall not relieve the Lessee of the obligation to pay any bonus due thereon to the Louisiana State Mineral Board, nor shall the Louisiana State Mineral Board be obligated to refund any consideration paid by the Lessor prior to such modification, cancellation, or abrogation, including, but not limited to, bonuses, rentals and royalties.

NOTE: The State of Louisiana does hereby reserve, and this lease shall be subject to, the imprescriptible right of surface use in the nature of a servitude in favor of the Department of Natural Resources, including its Offices and Commissions, for the sole purpose of implementing, constructing, servicing and maintaining approved coastal zone management and/or restoration projects. Utilization of any and all rights derived under this lease by the mineral lessee, its agents, successors or assigns, shall not interfere with nor hinder the reasonable surface use by the Department of Natural Resources, its Offices or Commissions, as herein above reserved.

Applicant: GULF COAST ENERGY CORPORATION

Bidder	Cash Payment	Price/Acre	Rental	Oil	Gas	Other



**TRACT 37497 - Portion of Block 49, West Cameron Area, Revised, Cameron Parish, Louisiana**

The beds and bottoms of all water bodies belonging to the State of Louisiana located in Block 49, West Cameron Area, Revised, together with any present lands formed by accretion to the shoreline or islands formed therein, located in Cameron Parish, Louisiana, owned by and not presently under mineral lease as of July 13, 2005, from the State of Louisiana, the geographical area of which is more fully described as follows: Beginning at a point on the North boundary of Block 49, West Cameron Area, Revised, having Coordinates of X = 1,221,734.16 and Y = 379,032.19; thence East 3,689.51 feet along the North boundary of said Block 49 to a point having Coordinates of X = 1,225,423.67 and Y = 379,032.19; thence South 7,758.05 feet to a point having Coordinates of X = 1,225,423.67 and Y = 371,274.14; thence West 1,189.51 feet to the Northeast corner of State Lease No. 16019 having Coordinates of X = 1,224,234.16 and Y = 371,274.14; thence West 2,500.00 feet along the North boundary of said State Lease No. 16019 to its Northwest corner, also being the Northeast corner of State Lease No. 16017 having Coordinates of X = 1,221,734.16 and Y = 371,274.14; thence North 7,758.05 feet to the point of beginning, containing approximately **657.10 acres**, all as more particularly outlined on a plat on file in the Office of Mineral Resources, Department of Natural Resources. All bearings, distances and coordinates are based on Louisiana Coordinate System of 1927, (North or South Zone).

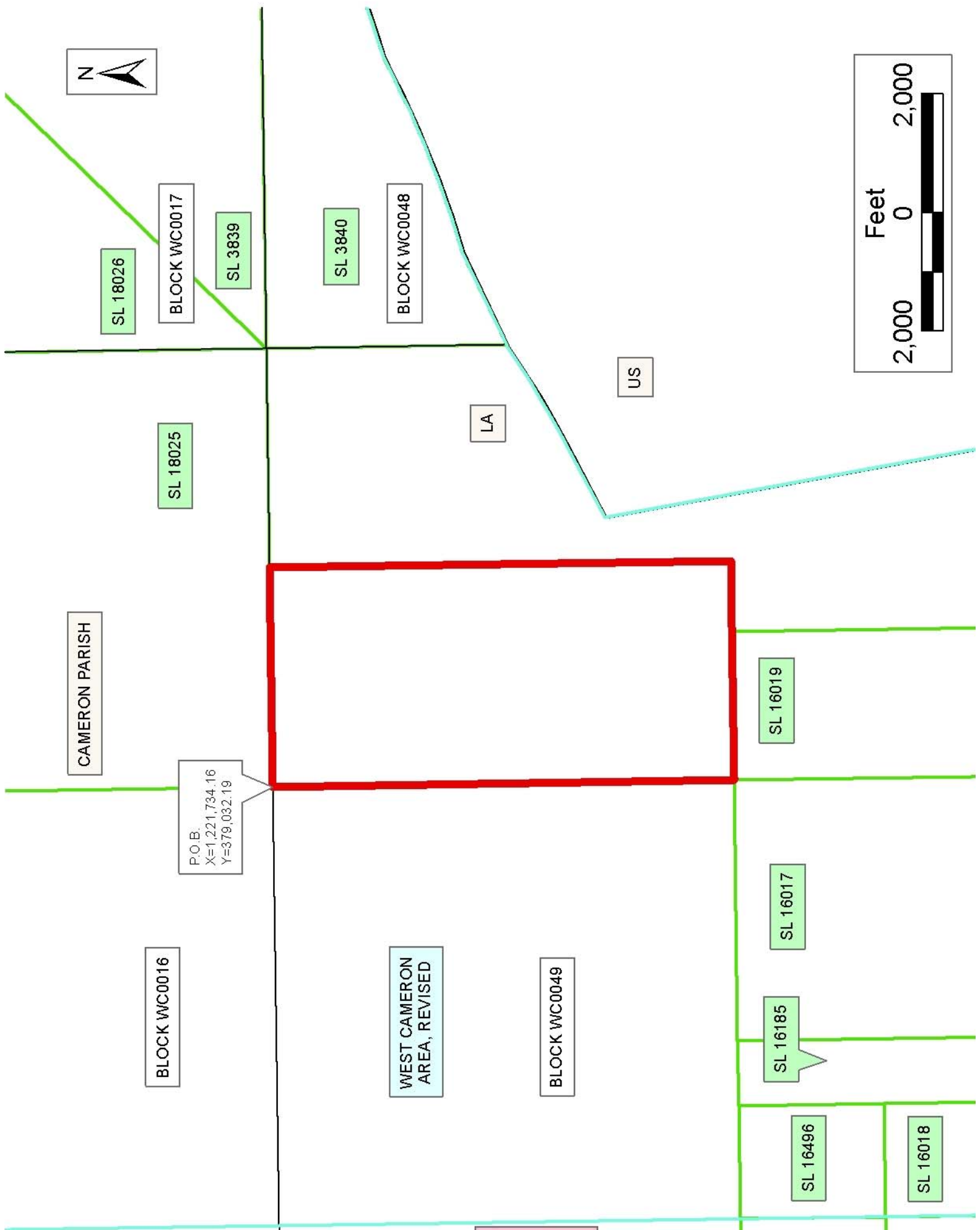
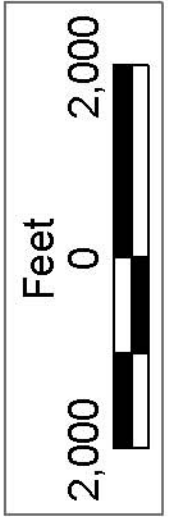
NOTE: The above description of the Tract nominated for lease has been provided and corrected, where required, exclusively by the nomination party. Any mineral lease selected from this Tract and awarded by the Louisiana State Mineral Board shall be without warranty of any kind, either express, implied, or statutory, including, but not limited to, the implied warranties of merchantability and fitness for a particular purpose. Should the mineral lease awarded by the Louisiana State Mineral Board be subsequently modified, cancelled or abrogated due to the existence of conflicting leases, operating agreements, private claims or other future obligations or conditions which may affect all or any portion of the leased Tract, it shall not relieve the Lessee of the obligation to pay any bonus due thereon to the Louisiana State Mineral Board, nor shall the Louisiana State Mineral Board be obligated to refund any consideration paid by the Lessor prior to such modification, cancellation, or abrogation, including, but not limited to, bonuses, rentals and royalties.

NOTE: The State of Louisiana does hereby reserve, and this lease shall be subject to, the imprescriptible right of surface use in the nature of a servitude in favor of the Department of Natural Resources, including its Offices and Commissions, for the sole purpose of implementing, constructing, servicing and maintaining approved coastal zone management and/or restoration projects. Utilization of any and all rights derived under this lease by the mineral lessee, its agents, successors or assigns, shall not interfere with nor hinder the reasonable surface use by the

Department of Natural Resources, its Offices or Commissions, as herein above reserved.

Applicant: GULF COAST ENERGY CORPORATION

Bidder	Cash Payment	Price/Acre	Rental	Oil	Gas	Other



P.O.B.  
X=1,221,734.16  
Y=379,032.19

CAMERON PARISH

SL 18026

BLOCK WC0017

SL 3839

SL 3840

BLOCK WC0048

LA

US

SL 18025

BLOCK WC0016

WEST CAMERON  
AREA, REVISED

BLOCK WC0049

SL 16019

SL 16017

SL 16185

SL 16496

SL 16018